



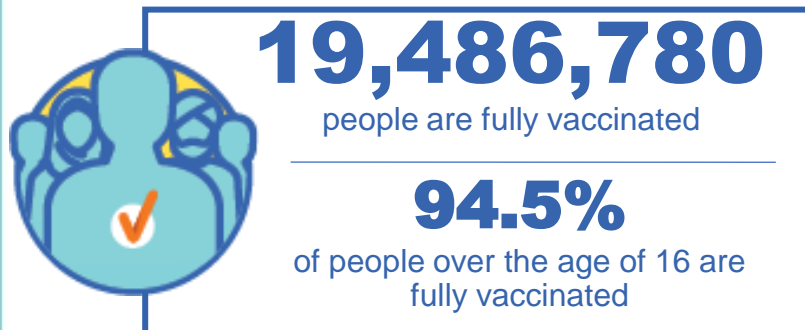
Australian Government
Operation COVID Shield

COVID-19 Vaccine Rollout

02 March 2022

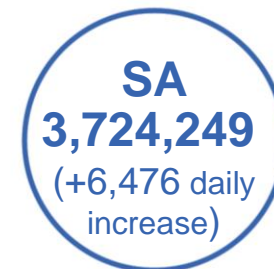
Data as at:
01 Mar 2022

Total vaccine doses



54,238,420 total vaccine doses administered nationally as at 01 March

+91,405 recorded in the last 24 hours



*Administration state breakdown indicates state in which a vaccine was administered

**Overall dose count includes instances of more than two doses per person in a small number of cases.

Source: Australian Immunisation Register

Booster Vaccinations

Australia's COVID-19
Vaccine Roadmap

Data as at:
01 Mar 2022



158,216

Indigenous people who have
received more than two doses

48.1%

of eligible population (328,763)



155,841

Aged Care Residents who have
received more than two doses##

90.3%

of eligible population (172,593)



152,543

NDIS participants

who have received more than two doses#

67.2%

of eligible population
(226,998)

18,942

NDIS residents

who have received more than two doses#

82.0%

of eligible population
(23,100)



11,601,534 total people who
have received more than two doses nationally

+75,165 recorded in the last 24 hours

63.8% of people who are eligible (18,196,208)
have received more than two doses

NSW	People	% of Eligible
Cumulative	3,598,019	58.9%
Daily increase	19,706	

VIC	People	% of Eligible
Cumulative	3,163,250	63.9%
Daily increase	19,185	

QLD	People	% of Eligible
Cumulative	2,012,516	62.2%
Daily increase	10,659	

WA	People	% of Eligible
Cumulative	1,336,046	81.0%
Daily increase	15,616	

SA	People	% of Eligible
Cumulative	820,300	69.1%
Daily increase	5,204	

TAS	People	% of Eligible
Cumulative	255,508	65.4%
Daily increase	1,543	

ACT	People	% of Eligible
Cumulative	240,370	70.5%
Daily increase	1,658	

NT	People	% of Eligible
Cumulative	93,010	62.4%
Daily increase	814	

*People may belong to multiple groups and could be represented in the above breakdowns multiple times.

Aged Care Residents data as at 1 March 2022. # NDIS participants data as at 1 March 2022.

Source: Australian Immunisation Register

82,515

doses administered to persons
residing in other territories or with
missing residential information

Vaccinations by residential location

Australia's COVID-19
Vaccine Roadmap

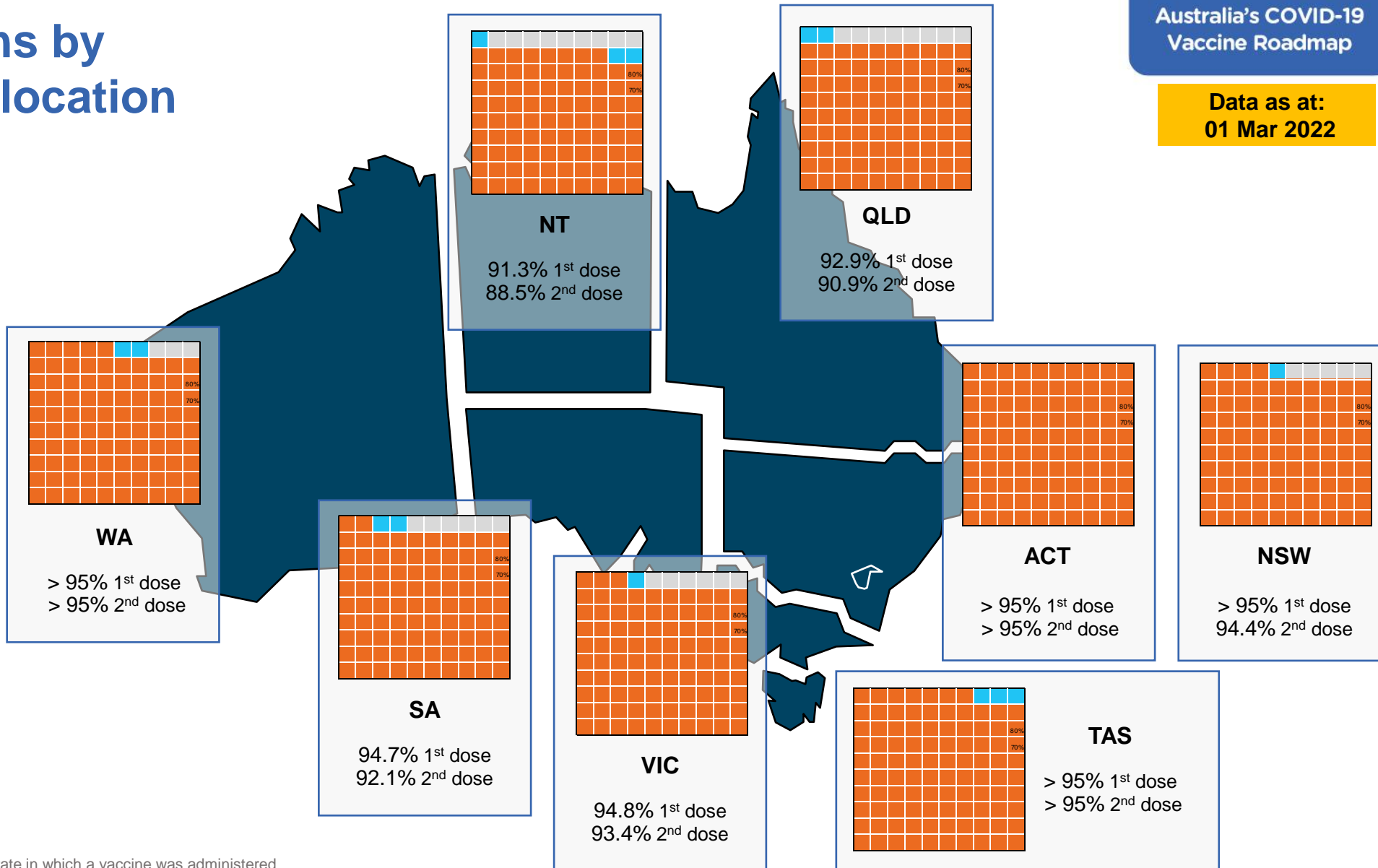
Data as at:
01 Mar 2022

First doses

Age	Today	4 weeks ago	8 weeks ago
16+	>95%	>95%	94.9%
50+	>95%	>95%	>95%
70+	>95%	>95%	>95%

Fully vaccinated

Age	Today	4 weeks ago	8 weeks ago
16+	94.5%	93.7%	92.1%
50+	>95%	>95%	>95%
70+	>95%	>95%	>95%



*Residential state may differ from the state in which a vaccine was administered

Commonwealth and Jurisdiction vaccine doses administered

Data as at:
01 Mar 2022



54,238,420 total vaccine
doses administered nationally as at 01 March
+ 91,405 recorded in the last 24 hours



20,156,716
doses administered by state
and territory facilities
+ 16,081
recorded in the last 24 hours

NSW	Jurisdictions	Commonwealth
Cumulative	4,953,121	11,986,708
Daily increase	1,518	20,919

TAS	Jurisdictions	Commonwealth
Cumulative	584,378	619,438
Daily increase	404	1,353

VIC	Jurisdictions	Commonwealth
Cumulative	5,840,304	8,500,439
Daily increase	3,945	17,849

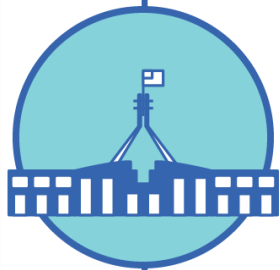
SA	Jurisdictions	Commonwealth
Cumulative	1,703,116	2,021,133
Daily increase	1,725	4,751

QLD	Jurisdictions	Commonwealth
Cumulative	3,710,026	6,597,345
Daily increase	1,529	11,742

ACT	Jurisdictions	Commonwealth
Cumulative	703,993	677,254
Daily increase	2,031	2,214

WA	Jurisdictions	Commonwealth
Cumulative	2,354,848	3,462,270
Daily increase	4,369	16,023

NT	Jurisdictions	Commonwealth
Cumulative	306,930	217,117
Daily increase	560	473

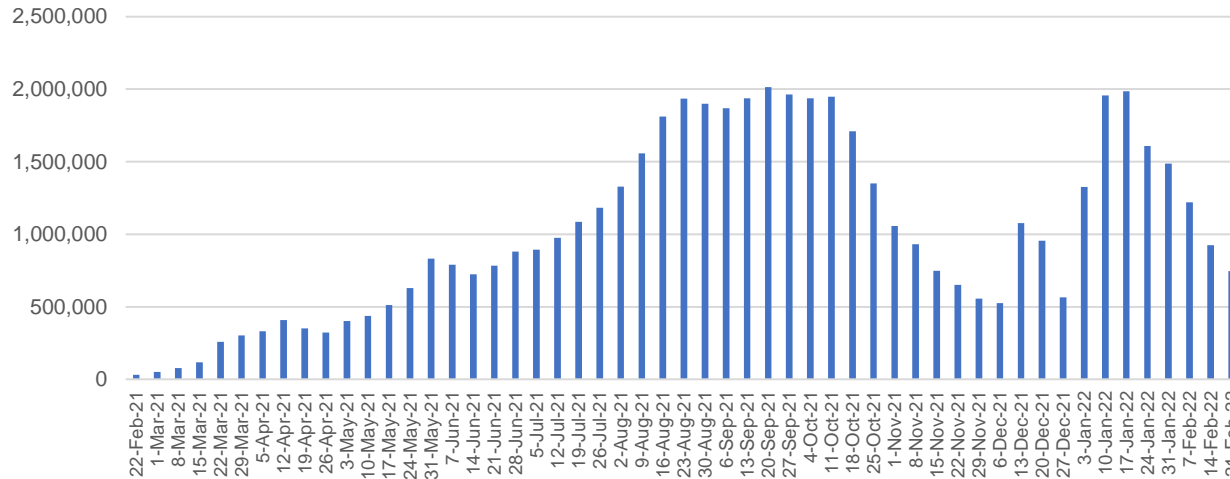


34,081,704
doses administered by
commonwealth facilities
+ 75,324
recorded in the last 24 hours

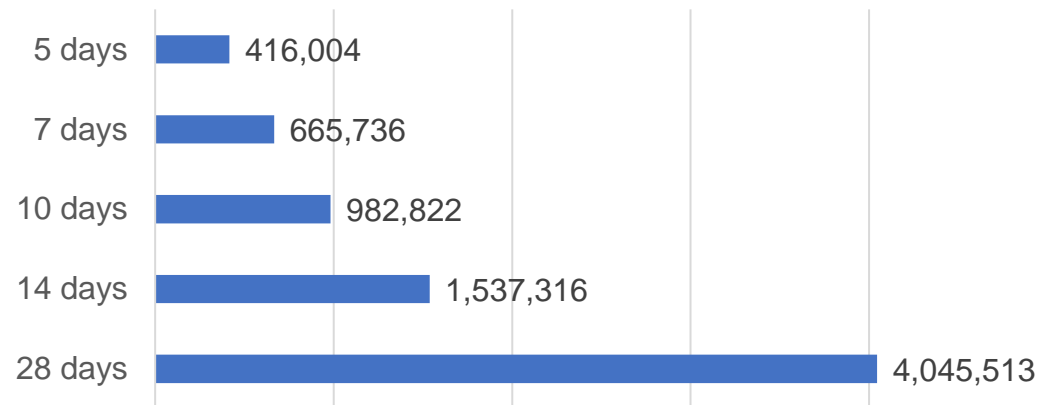
32,829,274 total vaccine doses
administered in primary care settings
1,252,430 total vaccine doses
administered in aged care and disability
settings

Vaccine milestone charts

Doses Administered by Week



Doses Reported

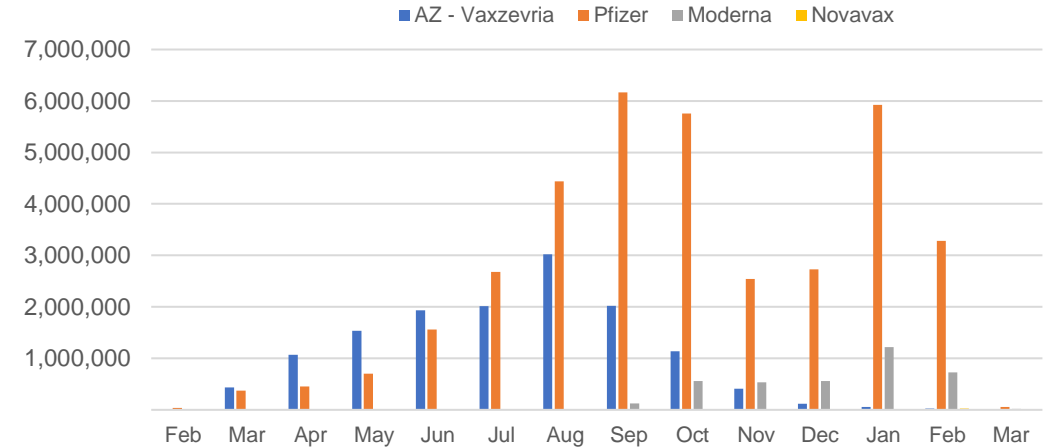


*Sourced from the Australian Immunisation Register.

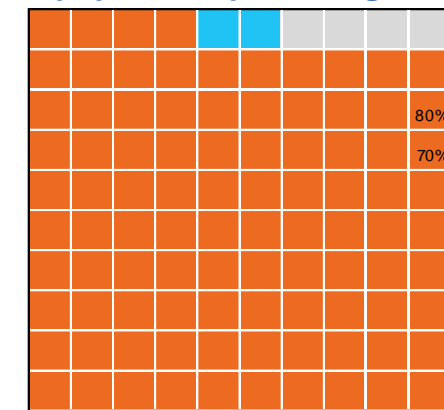
Data as at:
01 Mar 2022

Australia's COVID-19
Vaccine Roadmap

Doses by administration month and vaccine type



Eligible population percentage coverage



1st dose: >95.0% 2nd dose: 94.5%

*Each square represents 1% of the national population. Squares are filled as milestones are achieved.

Doses by age and sex

First and second doses by age and sex

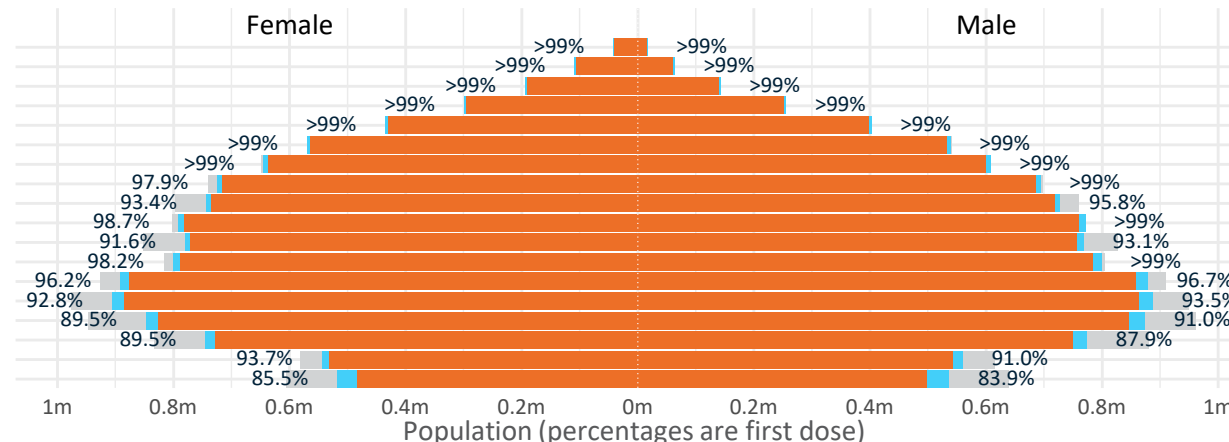
Australia's COVID-19
Vaccine Roadmap

Data as at:
01 Mar 2022

Age	Dose 1	Dose 2
95+	58,575 (>99%)	55,084 (>99%)
90-94	172,323 (>99%)	166,198 (>99%)
85-89	336,737 (>99%)	328,859 (>99%)
80-84	555,050 (>99%)	546,655 (>99%)
75-79	837,564 (>99%)	827,916 (>99%)
70-74	1,108,835 (>99%)	1,096,399 (>99%)
65-69	1,253,445 (>99%)	1,237,709 (98.4%)
60-64	1,419,527 (98.8%)	1,401,332 (97.5%)
55-59	1,472,591 (94.7%)	1,453,720 (93.4%)
50-54	1,563,212 (>99%)	1,542,844 (98.6%)
45-49	1,550,081 (92.4%)	1,527,549 (91.1%)
40-44	1,601,601 (98.9%)	1,572,958 (97.1%)
35-39	1,774,409 (96.7%)	1,737,362 (94.7%)
30-34	1,800,527 (93.6%)	1,753,816 (91.2%)
25-29	1,731,508 (90.8%)	1,680,522 (88.1%)
20-24	1,525,069 (89.1%)	1,482,296 (86.6%)
16-19	1,104,582 (92.4%)	1,075,561 (89.9%)
12-15	1,054,119 (84.7%)	981,858 (78.9%)

	16+	50+	12-15	5-11
Dose 1	96.34% (19,865,636 doses / 20,619,959 people)	>99% (8,777,859 doses / 8,749,703 people)	84.74% (1,054,119 doses / 1,243,990 people)	50.24% (1,143,811 doses / 2,276,638 people)
Dose 2	94.50% (19,486,780 doses / 20,619,959 people)	98.94% (8,656,716 doses / 8,749,703 people)	78.93% (981,858 doses / 1,243,990 people)	0.96% (21,770 doses / 2,276,638 people)

Dose 1 Dose 2 Population

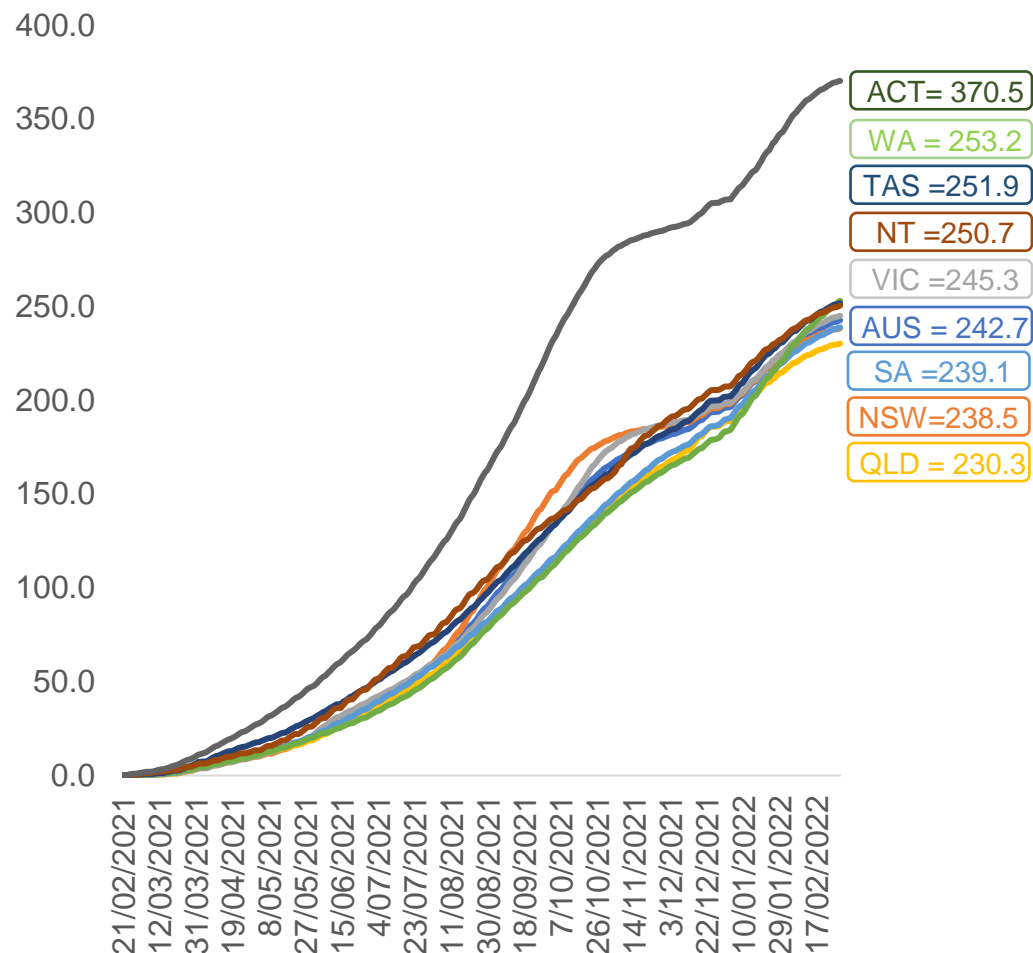


	AUS	ACT	NSW	NT	QLD	SA	TAS	VIC	WA
16 and over - dose 1	19,865,636	350,802	6,289,964	173,912	3,819,297	1,363,627	441,358	5,128,870	2,068,280
16 and over - dose 2	19,486,780	345,439	6,194,695	168,588	3,739,731	1,326,919	430,725	5,052,750	2,015,819
16 and over - population	20,619,959*	344,037	6,565,651	190,571	4,112,707	1,440,400	440,172	5,407,574	2,114,978
16 and over % with dose 1	96.34%	>99%	95.80%	91.26%	92.87%	94.67%	>99%	94.85%	97.79%
16 and over % with dose 2	94.50%	>99%	94.35%	88.46%	90.93%	92.12%	97.85%	93.44%	95.31%
5 to 11 - dose 1	1,143,811	31,073	341,319	12,641	204,091	81,875	27,782	315,258	122,755
5 to 11 - dose 2	21,770	313	8,912	143	3,396	507	94	6,976	1,282
5 to 11 - population	2,276,638	39,789	716,460	24,750	478,731	148,816	45,033	578,499	244,154
5 to 11 % with dose 1	50.24%	78.09%	47.64%	51.07%	42.63%	55.02%	61.69%	54.50%	50.28%
5 to 11 % with dose 2	0.96%	0.79%	1.24%	0.58%	0.71%	0.34%	0.21%	1.21%	0.53%
12 to 15 - dose 1	1,054,119	20,084	326,226	10,899	207,777	68,252	22,834	276,121	112,751
12 to 15 - dose 2	981,858	19,128	308,465	9,614	191,216	63,330	21,278	261,287	99,667
12 to 15 - population	1,243,990	19,693	390,330	13,060	270,146	82,747	26,308	308,611	132,869
12 to 15 % with dose 1	84.74%	>99%	83.58%	83.45%	76.91%	82.48%	86.79%	89.47%	84.86%
12 to 15 % with dose 2	78.93%	97.13%	79.03%	73.61%	70.78%	76.53%	80.88%	84.67%	75.01%

*National population will not equal sum of listed jurisdictions due to a small number of people counted in national population residing in some 'other' territories. Sum of state doses will not add to national total as some records are unable to be geocoded to a State or Territory.
Doses sourced from Australian Immunisation Register, population from ABS ERP June 2020

Vaccinations by location

Cumulative total doses administered vs eligible state populations*

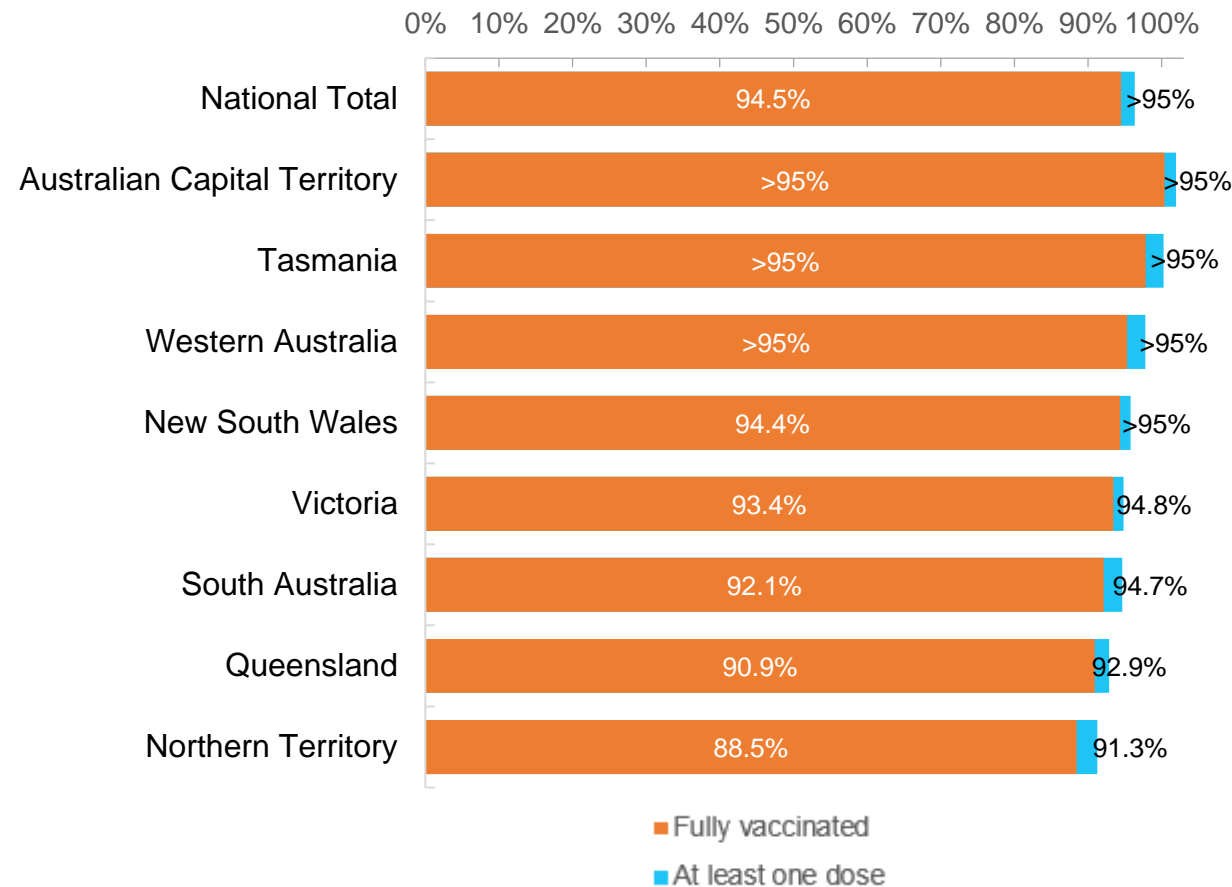


*Not an indication of percentage vaccinated, numbers will exceed 100 due to multiple doses required per person of the population. All doses are included for those aged 12 and above, and are based on vaccination provider location.

Data as at:
01 Mar 2022

Australia's COVID-19
Vaccine Roadmap

First and Second Doses by residential location



Aboriginal and Torres Strait Islander peoples

Number of people vaccinated

Data as at:
01 Mar 2022
Updated weekly

Australia's COVID-19
Vaccine Roadmap



432,654

people over the age of 16
have had at least one dose

83.4%

of people over the age of 16
have had at least one dose



407,664

people over the age of 16
are fully vaccinated

78.6%

of people over the age of 16 are
fully vaccinated



People aged 12 – 15 years

47,918

41,279

67.5%

At least one dose

58.2%

Fully vaccinated

177 Aboriginal community controlled health services (ACCHS)

0#
ACT

50
NSW

27
NT

44
QLD

12
SA

3
TAS

21
VIC

20
WA

Medicare Address State ^{##}	Individuals Dose 1	Individuals Dose 1 %	Individuals Dose 2	Individuals Dose 2 %
Australian Capital Territory	4,860	91.4%	4,729	88.9%
New South Wales	134,669	86.5%	131,268	84.3%
Northern Territory	41,974	88.7%	39,167	82.8%
Queensland	114,163	80.6%	107,138	75.6%
South Australia	19,634	78.9%	17,897	71.9%
Tasmania	14,042	88.1%	13,509	84.7%
Victoria	35,181	89.4%	34,262	87.1%
Western Australia	51,671	82.2%	45,346	72.2%
Unknown/Other Territories	16,460	63.9%	14,348	55.7%
Totals	432,654	83.4%	407,664	78.6%

Source: Australian Immunisation Register

*Identifying as Aboriginal and Torres Strait Islander is optional and the estimated population may be under reported.

**Includes all Aboriginal and Torres Strait Islander peoples who have received a vaccination, not limited to those administered in an ACCHS setting

#ACCHS in the ACT are currently operating as a Commonwealth Vaccine Clinics so not included to avoid double counting

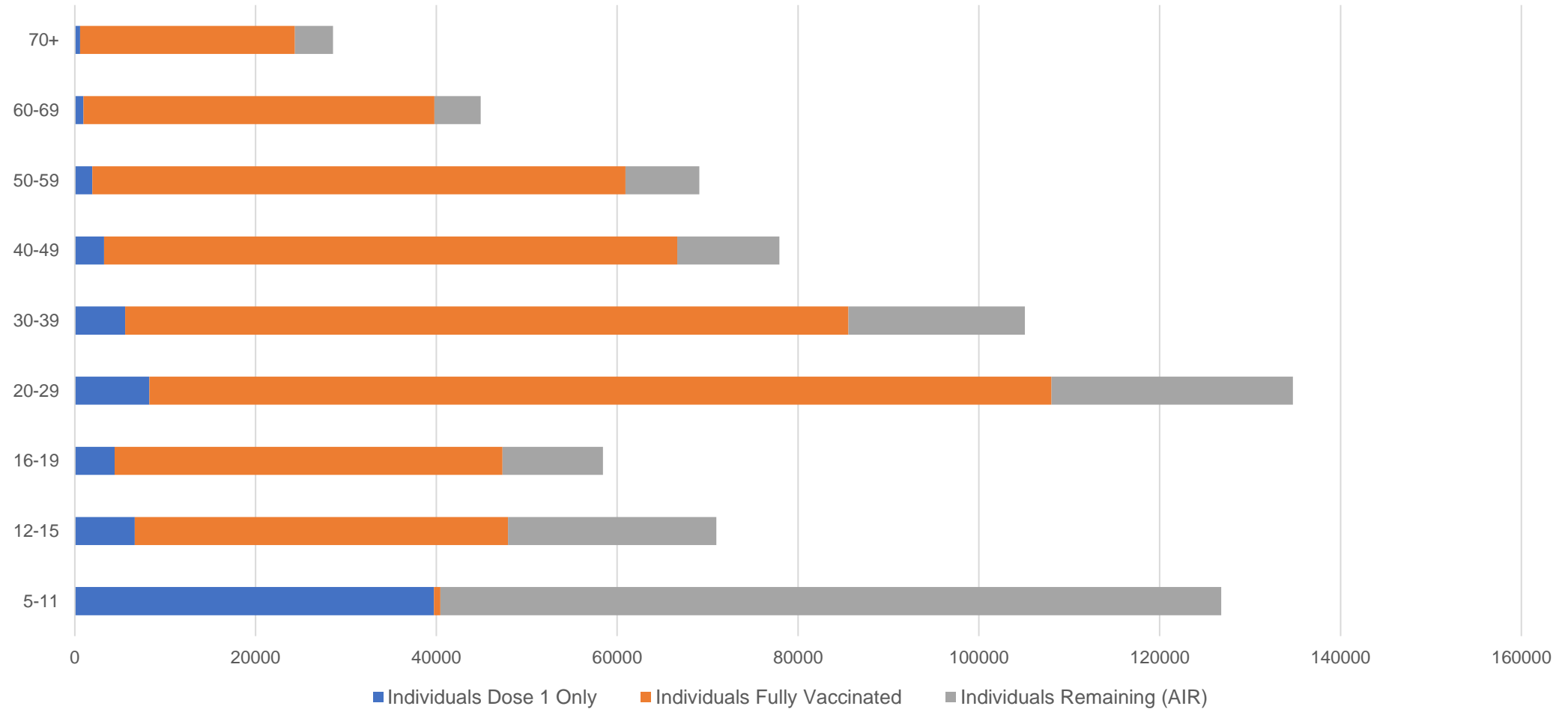
##The above table includes all identified Aboriginal and Torres Strait Islander people who are aged 16 and above by their state of residence.

Aboriginal and Torres Strait Islander peoples

Number of people vaccinated by age

Data as at:
01 Mar 2022
Updated weekly

Australia's COVID-19
Vaccine Roadmap



Source: Australian Immunisation Register

Commonwealth primary care

Data as at:
01 Mar 2022

Australia's COVID-19
Vaccine Roadmap



Primary care vaccine administration sites

5,777	127	177	3,558
GPs	CVCs	ACCHS	Pharmacies



32,829,274 total vaccine doses administered
primary care settings as at 01 March
+ 74,760 recorded in the last 24 hours

Primary care vaccinations by provider type

	Doses administered	Daily increase	7 day increase
General Practice* includes other Commonwealth	26,809,504	46,731	328,280
Pharmacy	6,019,770	28,029	188,572

NSW
11,448,445
(+20,739 daily increase)

VIC
8,200,315
(+17,546 daily increase)

QLD
6,325,795
(+11,882 daily increase)

WA
3,340,265
(+15,861 daily increase)

TAS
600,749
(+1,340 daily increase)

SA
1,945,396
(+4,798 daily increase)

ACT
519,527
(+1,415 daily increase)

NT
196,681
(+474 daily increase)

252,101

doses administered to persons
residing in other territories or with
missing residential information

*General practice includes Commonwealth Vaccination Clinics, Aboriginal Community Health Centres, Royal Flying Doctor Service and other Commonwealth vaccination facilities

Source: Australian Immunisation Register

Data as at:
01 Mar 2022

Commonwealth aged care and disability doses administered



1,252,430 (+ 564 last 24 hours)

Total vaccine doses administered in aged care and disability facilities as at 01 March

Number of doses administered as part of the Commonwealth aged and disability care rollout

NSW
556,235
(+6 daily increase)

VIC
234,042
(+63 daily increase)

QLD
198,023
(+78 daily increase)

WA
101,609
(+196 daily increase)

TAS
22,342
(-7# daily increase)

SA
83,830
(+18 daily increase)

ACT
16,469
(+23 daily increase)

NT
7,374
(+1 daily increase)

32,506

doses administered to persons residing in other territories or with missing residential information

*Sourced from the Australian Immunisation Register. Includes all persons vaccinated at participating residential aged care, disability and related industry settings.

**State level breakdown indicates the residential location and may not align to the state in which the vaccination occurred.

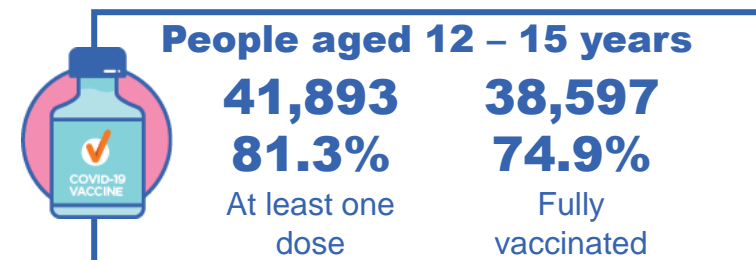
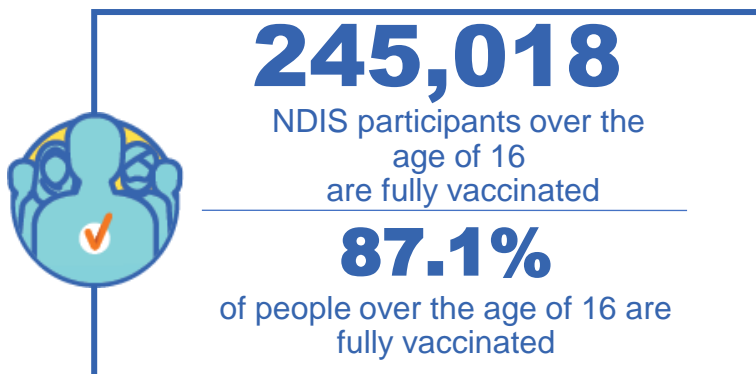
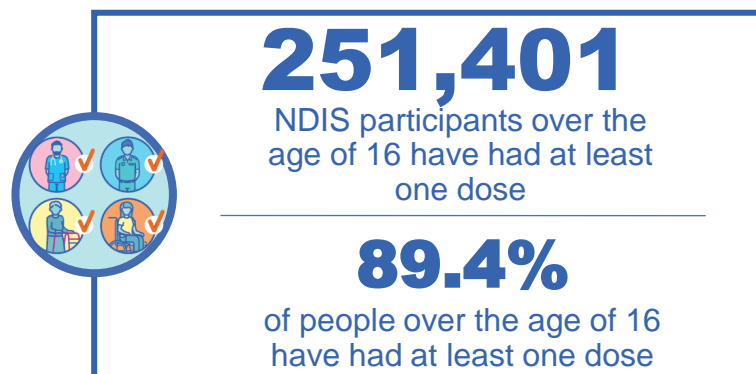
Numbers are calculated as difference in daily cumulative reported numbers to allow for historical corrections in all data sources. This can occasionally result in negative numbers, such as TAS where historical details about doses have been updated.

Source: Australian Immunisation Register

National Disability Insurance Scheme (NDIS) reported vaccinations

Data as at:
24 February 2022
Updated weekly

Australia's COVID-19
Vaccine Roadmap



NDIS participant vaccinations

	People aged 16+ with at least one dose	People aged 16+ fully vaccinated	% People aged 16+ with at least one dose	% People aged 16+ fully vaccinated
ACT	4,794	4,722	91.2%	89.8%
NSW	77,732	76,391	89.6%	88.0%
NT	2,187	2,079	80.9%	76.9%
QLD	49,286	47,943	88.7%	86.2%
SA	20,438	19,706	87.1%	84.0%
TAS	6,293	6,077	89.4%	86.3%
VIC	67,084	65,746	90.4%	88.6%
WA	23,587	22,354	89.8%	85.1%
National	251,401	245,018	89.4%	87.1%

Source: Linkage between National Disability Insurance Agency data and the Australian Immunisation Register. Total NDIS participant numbers as at 17th October. Australian Immunisation Register data as at 23 February. Includes all participants regardless of residence type.

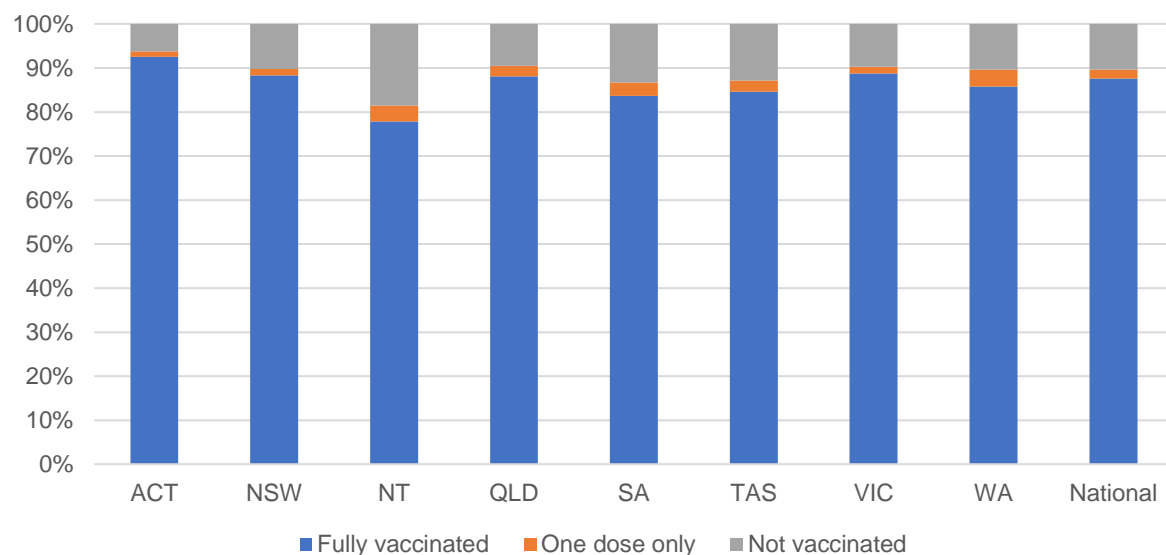
National Disability Insurance Scheme (NDIS) reported vaccinations

Data as at:
24 February 2022
Updated weekly

Australia's COVID-19
Vaccine Roadmap

NATIONAL	Total people with at least one dose	People fully vaccinated	Total number of individuals in cohort	% People with at least one dose	% People fully vaccinated
NDIS participants living in disability accommodation	20,562	20,115	22,800	90.2%	88.2%

NDIS participants in disability and aged care accommodation



Source: Linkage between National Disability Insurance Agency data and the Australian Immunisation Register. Includes participants residing in disability accommodation only.

Source: Total NDIS participant numbers as at 17th October. Participant data as at 23 February. Australian Immunisation Register data as at 23 February. Worker data as at 24 February.

NDIS workforce vaccinations

	NDIS workers with at least one dose	NDIS workers fully vaccinated	% NDIS workers with at least one dose	% NDIS workers fully vaccinated
NSW	120,272	119,703	97.6%	97.1%
VIC	106,884	105,292	98.0%	96.6%
QLD	67,644	66,591	97.2%	95.7%
WA	32,347	30,855	98.1%	93.6%
SA	34,573	33,378	97.6%	94.3%
TAS	10,711	10,574	99.5%	98.2%
ACT	3,528	3,501	99.5%	98.8%
NT	3,248	3,205	99.4%	98.1%
TOTAL	379,207	373,099	97.8%	96.2%

Source: the NDIS Commission has established a requirement for registered NDIS providers who provide intensive disability support services to report on the vaccination status of workers they employ, or otherwise engage, to deliver NDIS-funded supports and services, and who are required to be vaccinated in accordance with in-force state and territory public health orders. The statistics reflect data reported to the NDIS Commission by registered NDIS providers and should be considered indicative and subject to change

Note: Some registered NDIS providers are yet to report on the vaccination status of their workforce. The NDIS Commission is working with those providers around reporting requirements.

Remaining workers not included include those exempt from vaccination requirements, workers whose vaccination status is not yet verified by the provider (such as workers on leave) and provider reporting anomalies.

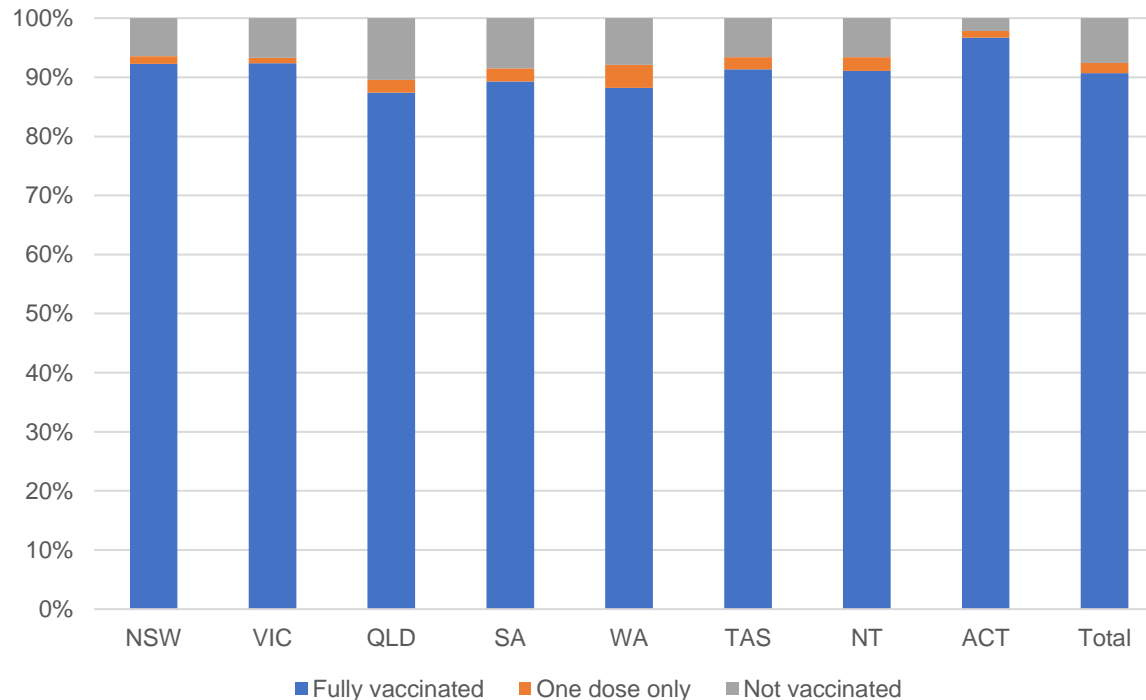
Residential aged care vaccination rollout

Australia's COVID-19
Vaccine Roadmap

Data as at:
24 Feb 2022
Updated weekly



Aged care resident vaccinations



Aged care worker vaccinations

Jurisdictions	Total workers with at least one dose	Workers fully vaccinated	% Workers with at least one dose	% Workers fully vaccinated
NSW	78,672	78,654	99.2%	99.2%
VIC	69,348	69,283	98.9%	98.8%
QLD	48,822	48,819	99.0%	99.0%
SA	26,976	26,947	98.4%	98.3%
WA	23,800	23,797	99.1%	99.1%
TAS	7,615	7,615	99.3%	99.3%
NT	878	878	100.0%	100.0%
ACT	3,031	3,031	100.0%	100.0%
Total	259,142	259,024	99.0%	99.0%

Source: My Aged Care Portal vaccination progress

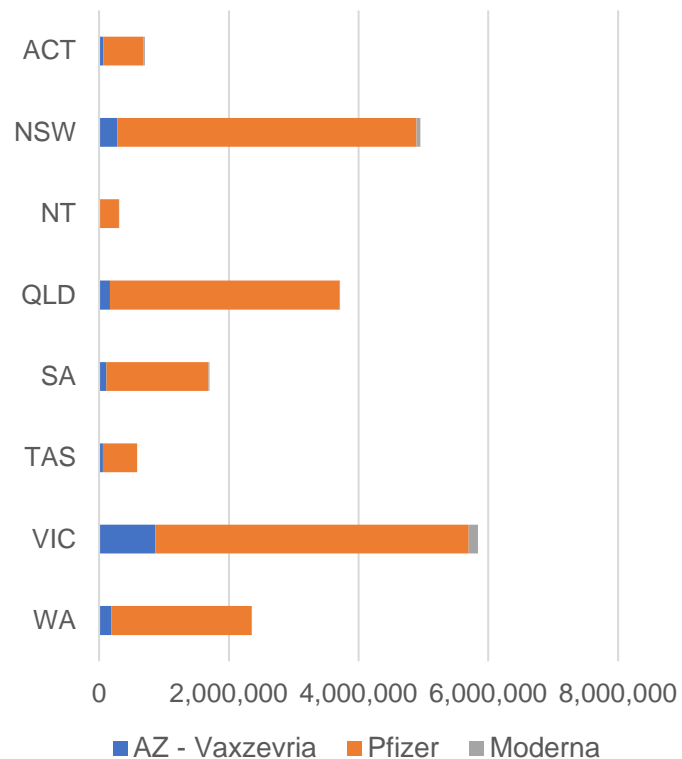
*Status updates are provided by facilities at least once per week. Reporting is updated Monday to Friday to encompass different facility updates being made on different days.

Data is sourced directly from Aged Care Service Providers and is not drawn or closely aligned with data from AIR due to inconsistencies and potential lags in uploading of records.

Data as at:
01 Mar 2022

Jurisdiction administered

Total vaccine doses administered in State and Territory clinics as at 01 March



20,156,716 total vaccine doses administered
in State and Territory clinics as at 01 March
+ **16,081** recorded in the last 24 hours
+ **149,194** recorded in the last 7 days

NSW
4,953,121
(+1,518 daily
increase)

VIC
5,840,304
(+3,945 daily
increase)

QLD
3,710,026
(+1,529 daily
increase)

WA
2,354,848
(+4,369 daily
increase)

TAS
584,378
(+404 daily
increase)

SA
1,703,116
(+1,725 daily
increase)

ACT
703,993
(+2,031 daily
increase)

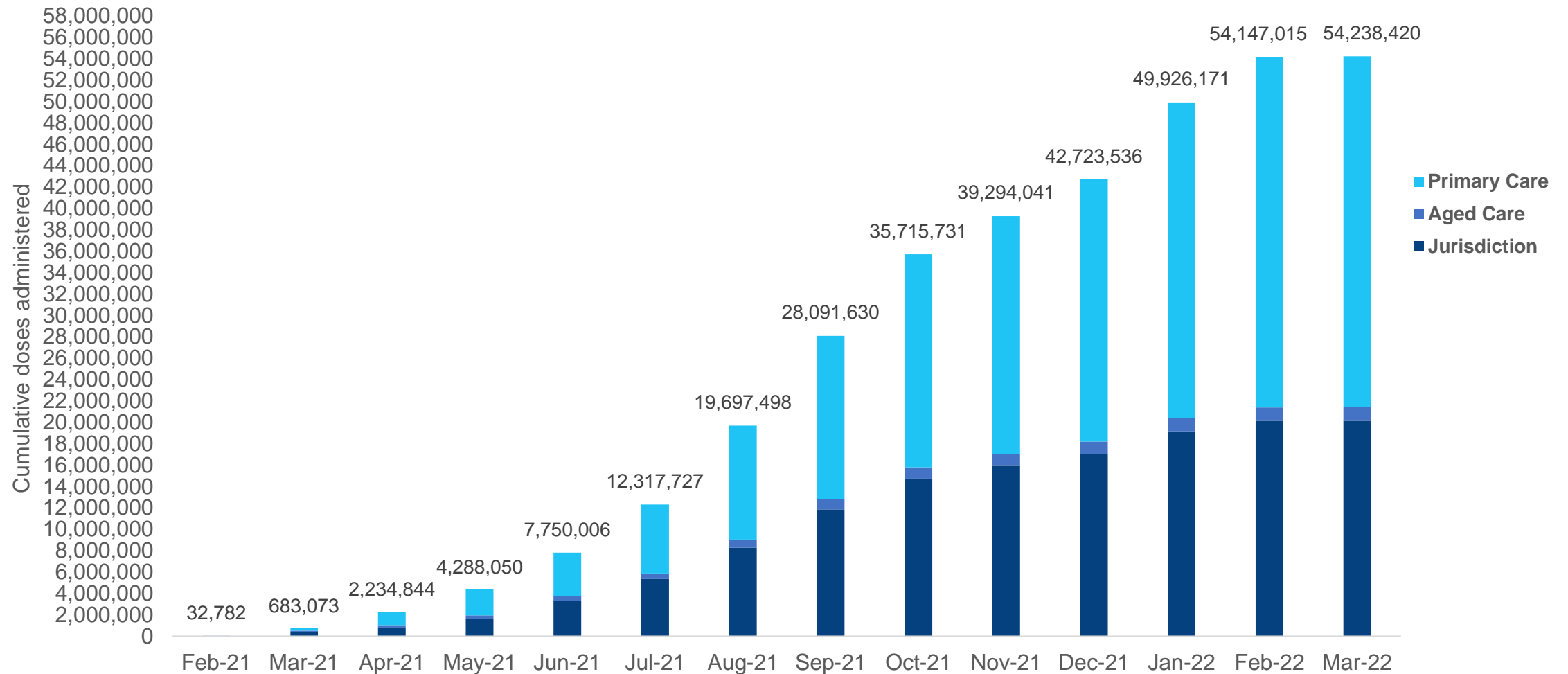
NT
306,930
(+560 daily
increase)

*Sourced from the Australian Immunisation Register. Numbers are calculated as difference in daily cumulative reported numbers to allow for historical corrections.

Cumulative doses administered by channel

Data as at:
01 Mar 2022

Australia's COVID-19
Vaccine Roadmap



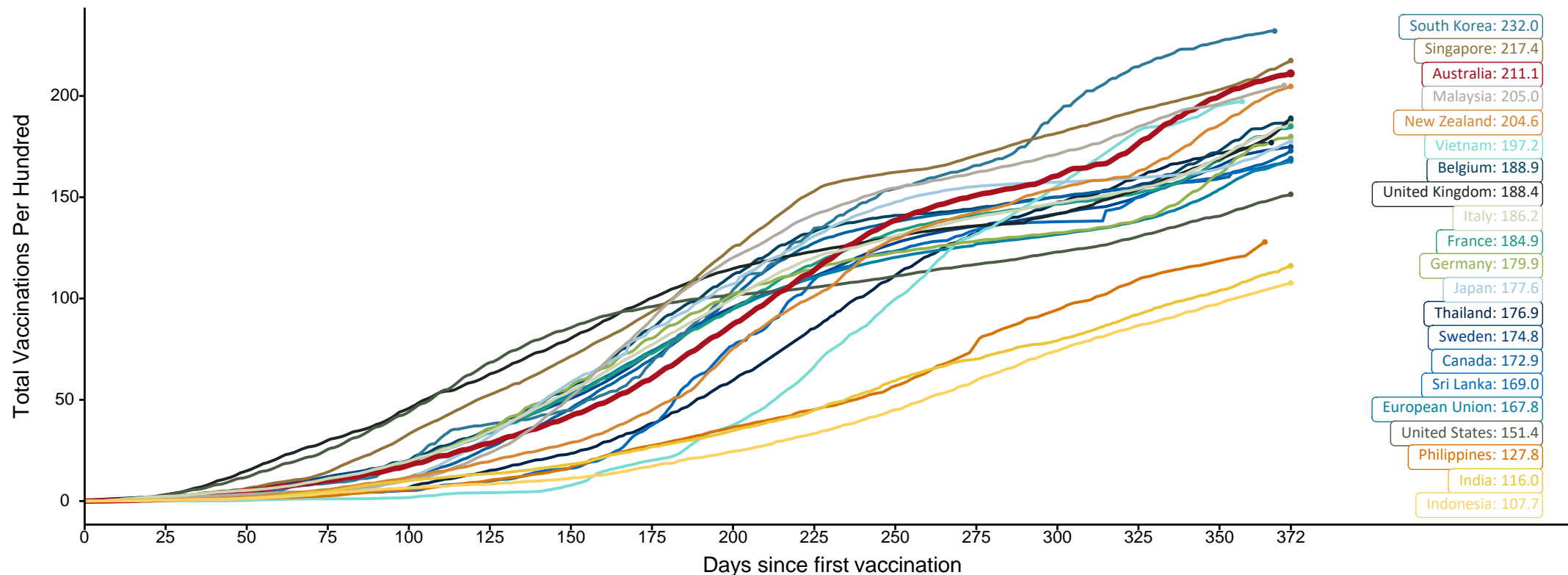
Source: Australian Immunisation Register

Doses at equivalent stages of rollout (Day 372)

Data as at:
01 Mar 2022

The x-axis is truncated at the length of Australia's vaccination program. Countries with intermittent reporting have had their doses per 100 imputed to Australia's current stage of rollout. Israel excluded as it is beyond scale of the graph

Cumulative doses administered (01 Mar): **54,238,420**



Note: From 11 January 2022, data for Australia includes all doses administered to people 5 and over. Prior to 11 January, data was for 12 and over.

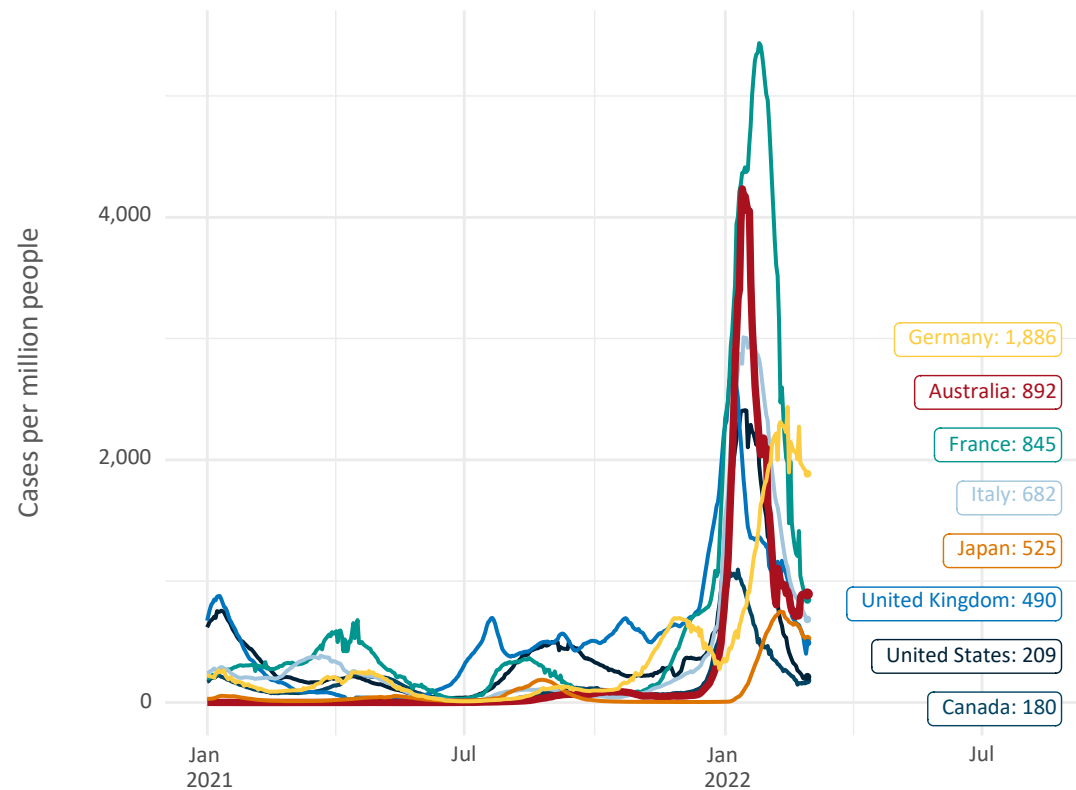
Source: Department of Health (Australia), Our World in Data (international)

Latest data: 01 March

International data – COVID-19

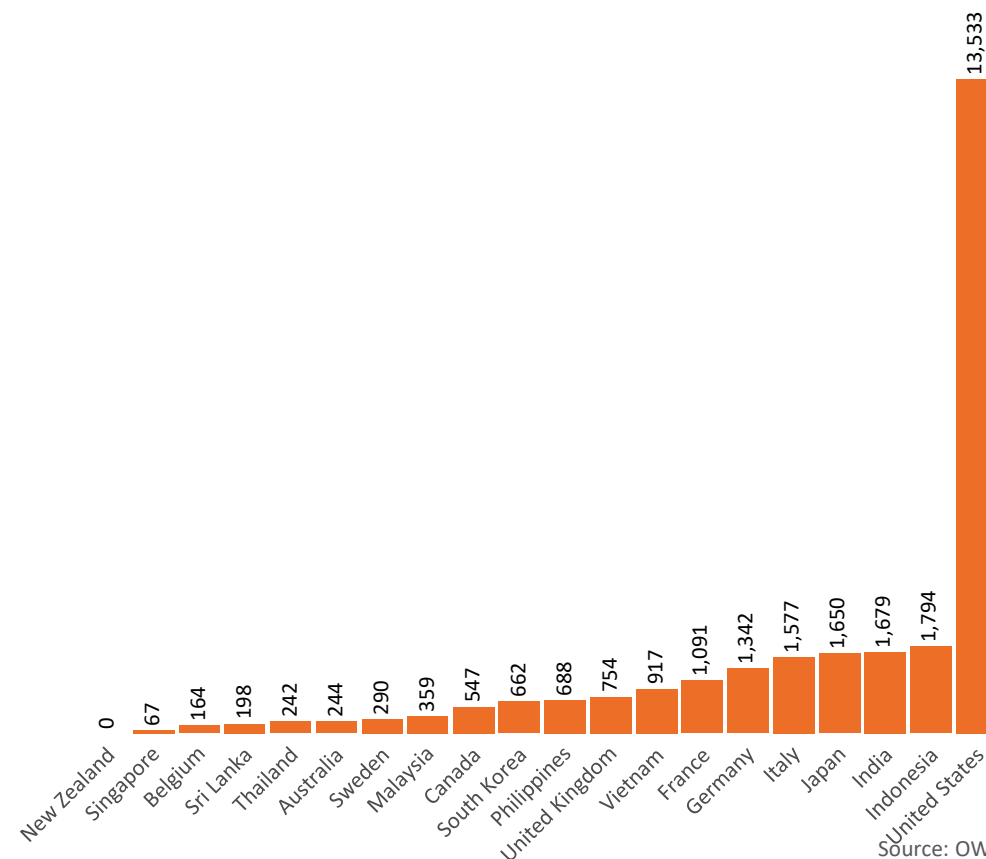
Data as at:
01 Mar 2022

New daily cases per million in 2021, Australia and G7 countries
Smoothed - 7 day average



Source: OWID
Data downloaded: 02 Mar 2022 08:25
Latest data: 28 Feb 2022

COVID-19 deaths in past 7 days - Australia and select countries



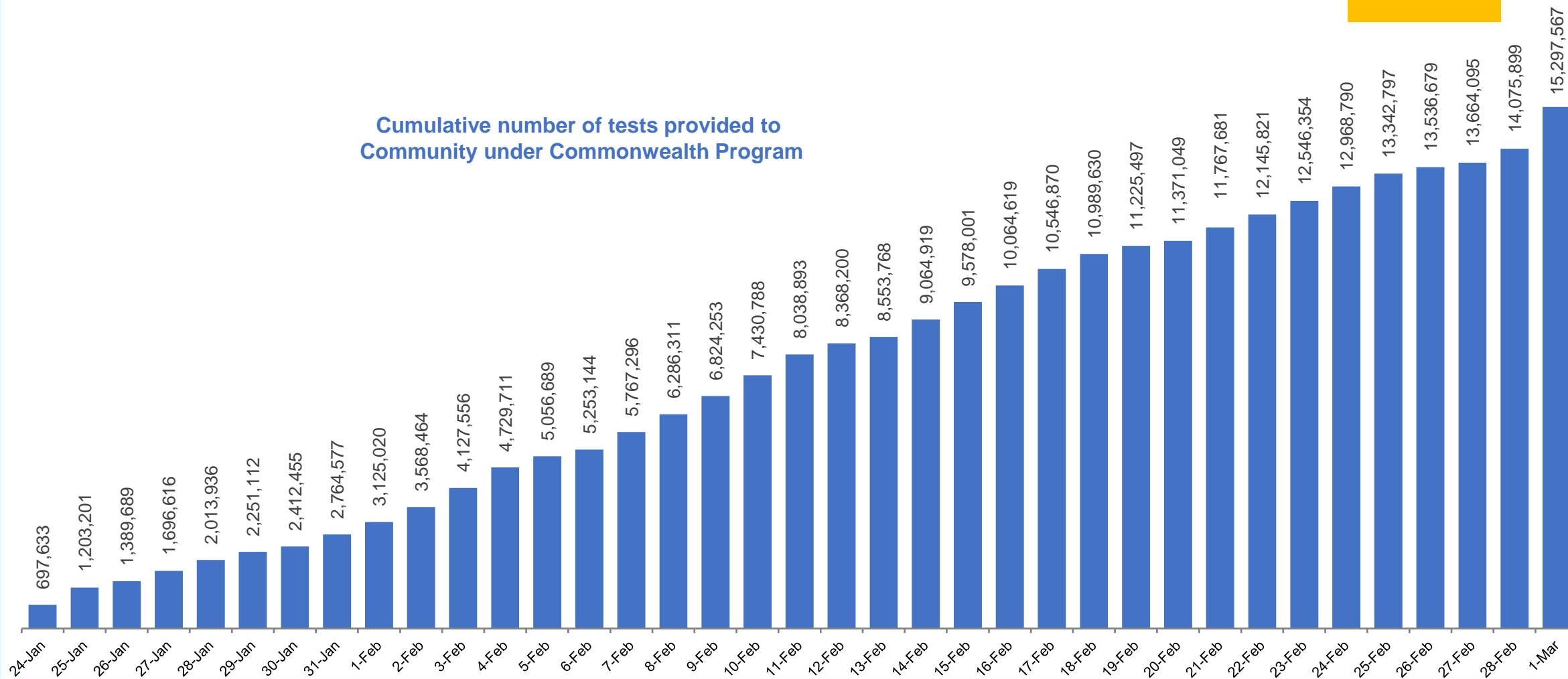
Source: OWID
Data downloaded: 02 Mar 2022 08:25
Latest data: 28 Feb 2022

Data as at:
1 Mar 2022

Concessional rapid antigen test program

5,568 pharmacies have delivered over **15.2 million rapid antigen tests** to more than **3m eligible concession card holders** under the Government's concessional rapid antigen test program.

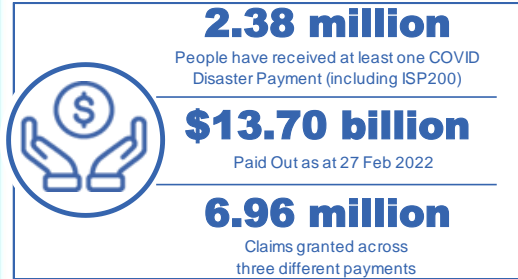
Cumulative number of tests provided to
Community under Commonwealth Program



Pandemic Response Payments

Australia's COVID-19
Vaccine Roadmap

Data as at midnight: 27 Feb 2022
Updated weekly



COVID Disaster Payment:	5.89 million claims received - 2.19 million individuals paid a total of \$12.59 billion.
\$200 Income Support Payment:	353,000 claims received - 183,000 individuals paid a total of \$268.9 million.
Pandemic Leave Disaster Payment:	1,163,000 claims received - 752,000 individuals paid a total of \$837.1 million.



COVID Disaster Payment

assisting during a lockdown event in a Commonwealth hotspot.

Income Support Payment \$200

for income support recipients who lost at least 8 hours of work.

Pandemic Leave Disaster Payment

for those who have to self-isolate, quarantine or care.

For more information visit:
servicesaustralia.gov.au

COVID-19 DISASTER PAYMENTS

Northern Territory

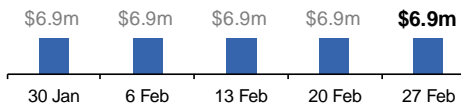
Lockdown (#3) from 16 Nov to 22 Nov
Claiming period ended 27 Dec

7,500 people have received at least one COVID Disaster Payment.

\$6.9m paid out as at 27 Feb 2022.

\$0 paid in initial payments in the week ending 27 Feb 2022.

Cumulative payments made by Territory since activation on 25 Aug 2021.



Victoria

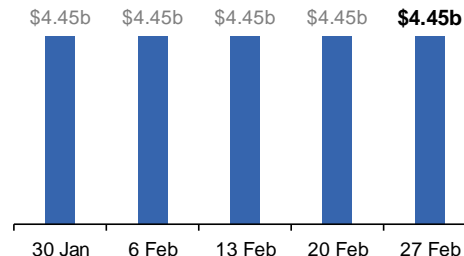
Lockdown (#6) from 6 Aug to 28 Oct
Claiming period ended 9 Dec

745,000 people have received at least one COVID Disaster Payment.

\$4.45b paid out as at 27 Feb 2022.

\$0 paid in initial and reoccurring payments in the week ending 27 Feb 2022.

Cumulative payments made by State since activation on 8 Jun 2021.



New South Wales

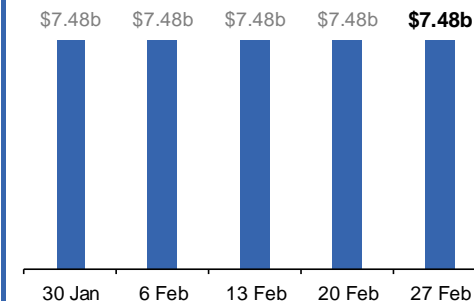
Lockdown from 24 Jun to 10 Oct
Claiming period ended 27 Nov

1.08m people have received at least one COVID Disaster Payment.

\$7.48b paid out as at 27 Feb 2022.

\$0 paid in initial and reoccurring payments in the week ending 27 Feb 2022.

Cumulative payments made by State since activation on 1 Jul 2021.



Australian Capital Territory

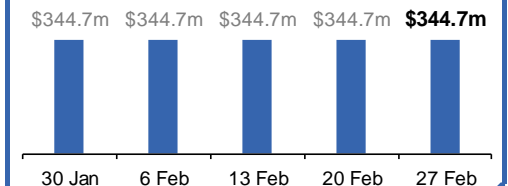
Lockdown from 12 Aug to 14 Oct
Claiming period ended 25 Nov

65,000 people have received at least one COVID Disaster Payment.

\$344.7m paid out as at 27 Feb 2022.

\$0 paid in initial and reoccurring payments in the week ending 27 Feb 2022.

Cumulative payments made by Territory since activation on 20 Aug 2021.



Pandemic Response Payments (continued)

Data as at midnight: 27 Feb 2022
Updated weekly

COVID-19 DISASTER PAYMENTS

Tasmania

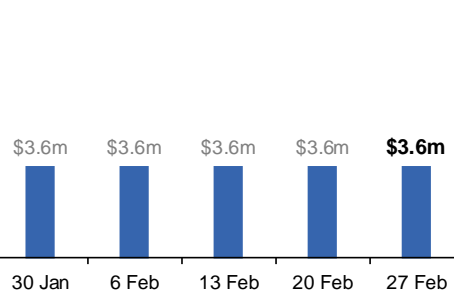
Lockdown from 15 Oct to 18 Oct
Claiming period ended 12 Nov

6,900 people have received at least one COVID Disaster Payment.

\$3.6m paid out as at 27 Feb 2022.

\$0 paid in initial and reoccurring payments in the week ending 27 Feb 2022.

Cumulative payments made by State since activation on 22 Oct 2021.



Queensland

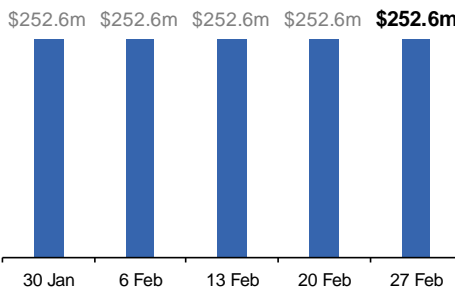
Lockdown from 31 Jul to 11 Aug
Claiming period ended 28 Aug

196,000 people have received at least one COVID Disaster Payment.

\$252.6m paid out as at 27 Feb 2022.

\$0 paid in initial and reoccurring payments in the week ending 27 Feb 2022.

Cumulative payments made by State since activation on 7 Aug 2021.



South Australia

Lockdown from 21 to 27 Jul
Claiming period ended 17 Aug

86,000 people have received at least one COVID Disaster Payment.

\$48.2m paid out as at 27 Feb 2022.

\$0 paid in initial and reoccurring payments in the week ending 27 Feb 2022.

Cumulative payments made by State since activation on 28 Jul 2021.

