



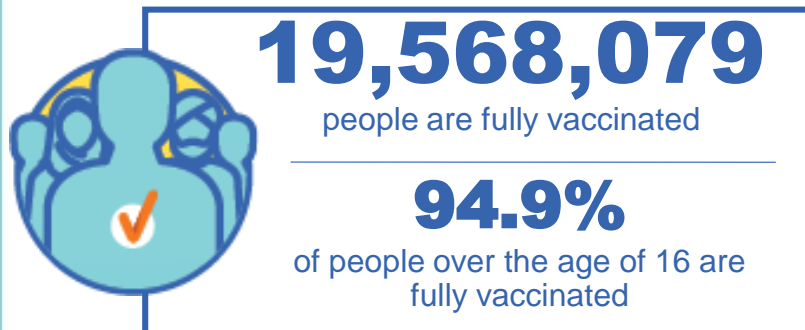
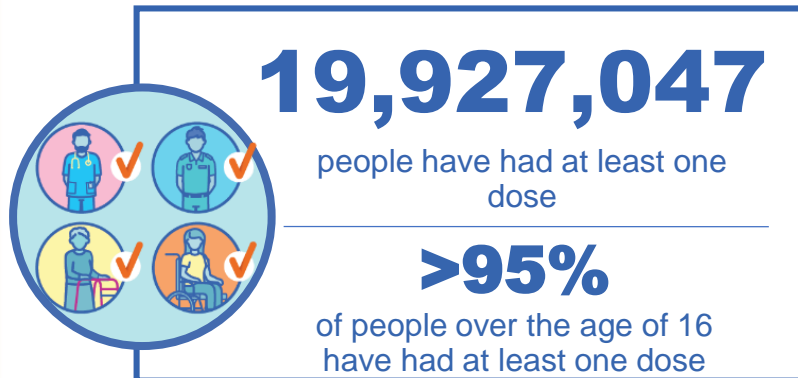
Australian Government
Operation COVID Shield

COVID-19 Vaccine Roll-out

19 March 2022

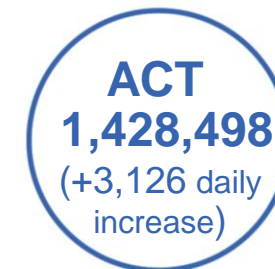
Data as at:
18 Mar 2022

Total vaccine doses



55,608,918 total vaccine
doses administered nationally as at 18 March

+100,896 recorded in the last 24 hours



*Administration state breakdown indicates state in which a vaccine was administered

**Overall dose count includes instances of more than two doses per person in a small number of cases.

Source: Australian Immunisation Register

Booster Vaccinations

Australia's COVID-19
Vaccine Roadmap

Data as at:
18 Mar 2022



179,137

Indigenous people who have
received more than two doses

49.9%

of eligible population (359,113)



160,978

Aged Care Residents who have
received more than two doses##

92.8%

of eligible population (173,424)



167,202

NDIS participants

20,126

NDIS residents

who have received more than two doses#

70.6%

of eligible population
(236,000)

85.7%

of eligible population
(23,000)



12,455,925 total people who
have received more than two doses nationally

+53,234 recorded in the last 24 hours

66.3% of people who are eligible (18,793,478)
have received more than two doses

NSW	People	% of Eligible
Cumulative	3,825,920	62.2%
Daily increase	15,616	

VIC	People	% of Eligible
Cumulative	3,380,667	67.5%
Daily increase	12,747	

QLD	People	% of Eligible
Cumulative	2,149,039	61.1%
Daily increase	9,186	

WA	People	% of Eligible
Cumulative	1,492,077	85.0%
Daily increase	8,038	

SA	People	% of Eligible
Cumulative	880,418	70.2%
Daily increase	3,621	

TAS	People	% of Eligible
Cumulative	278,811	68.6%
Daily increase	1,816	

ACT	People	% of Eligible
Cumulative	251,859	73.4%
Daily increase	663	

NT	People	% of Eligible
Cumulative	104,441	66.0%
Daily increase	673	

*People may belong to multiple groups and could be represented in the above breakdowns multiple times.

NDIS participants data as at 17 March 2022.

Aged Care Residents data as at 18 March 2022.

Source: Australian Immunisation Register

92,693

doses administered to persons
residing in other territories or with
missing residential information

Vaccinations by residential location

Australia's COVID-19
Vaccine Roadmap

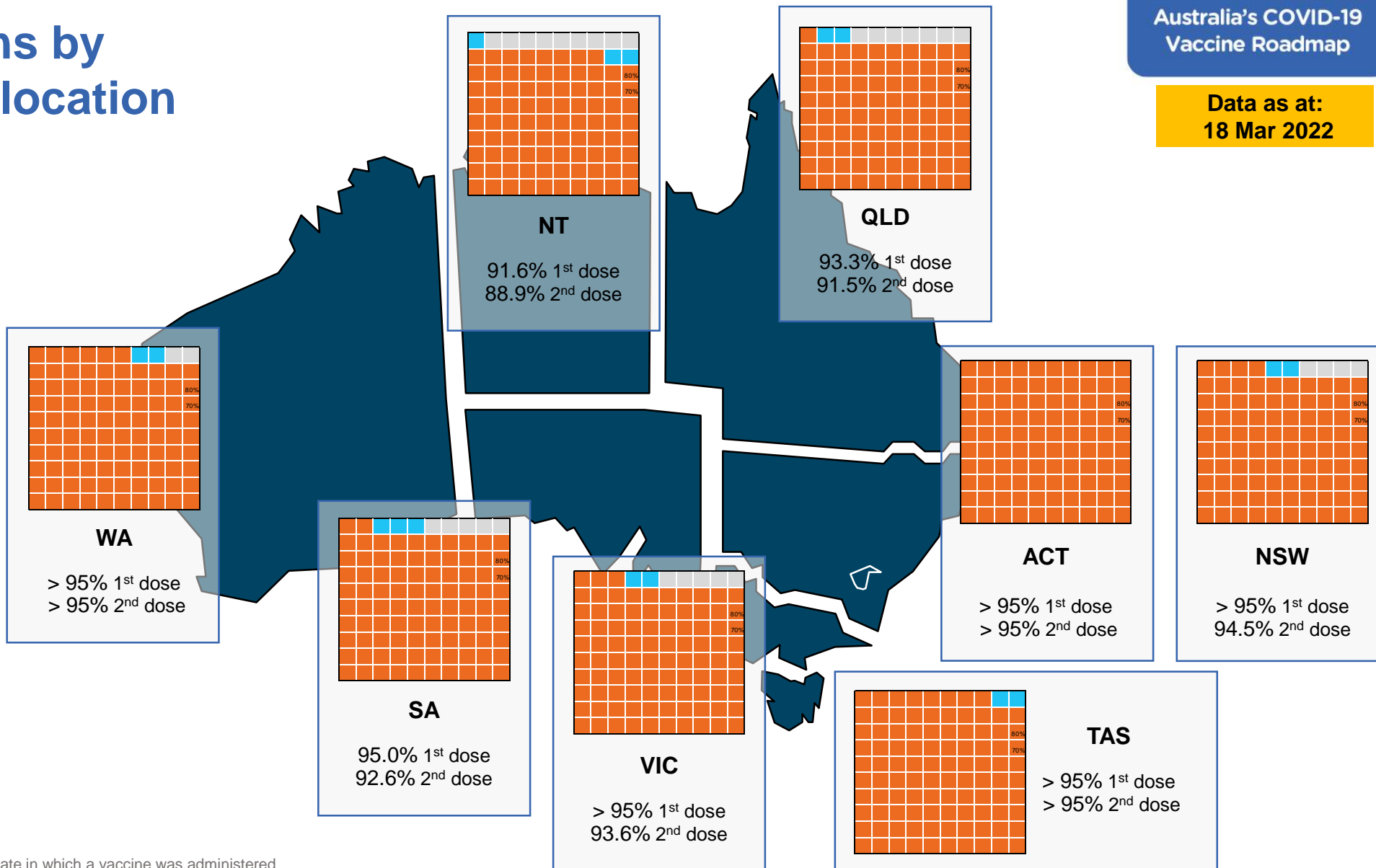
Data as at:
18 Mar 2022

First doses

Age	Today	4 weeks ago	8 weeks ago
16+	>95%	>95%	>95%
50+	>95%	>95%	>95%
70+	>95%	>95%	>95%

Fully vaccinated

Age	Today	4 weeks ago	8 weeks ago
16+	94.9%	94.4%	93.3%
50+	>95%	>95%	>95%
70+	>95%	>95%	>95%



*Residential state may differ from the state in which a vaccine was administered

Commonwealth and Jurisdiction vaccine doses administered

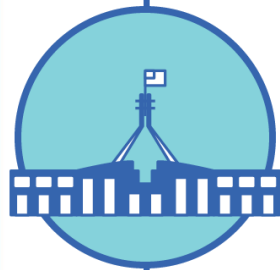
Data as at:
18 Mar 2022



55,608,918 total vaccine
doses administered nationally as at 18 March
+ 100,896 recorded in the last 24 hours



20,492,005
doses administered by state
and territory facilities
+ 23,475
recorded in the last 24 hours



35,116,913
doses administered by
commonwealth facilities
+ 77,421
recorded in the last 24 hours

33,855,511 total vaccine doses
administered in primary care settings
1,261,402 total vaccine doses
administered in aged care and disability
settings

NSW	Jurisdictions	Commonwealth
Cumulative	5,007,553	12,297,828
Daily increase	5,004	24,666

VIC	Jurisdictions	Commonwealth
Cumulative	5,922,243	8,749,160
Daily increase	5,408	19,171

QLD	Jurisdictions	Commonwealth
Cumulative	3,762,825	6,780,418
Daily increase	3,727	14,318

WA	Jurisdictions	Commonwealth
Cumulative	2,410,917	3,641,814
Daily increase	2,874	11,352

TAS	Jurisdictions	Commonwealth
Cumulative	598,961	643,919
Daily increase	845	1,881

SA	Jurisdictions	Commonwealth
Cumulative	1,739,135	2,083,678
Daily increase	2,869	4,449

ACT	Jurisdictions	Commonwealth
Cumulative	732,733	695,765
Daily increase	2,061	1,065

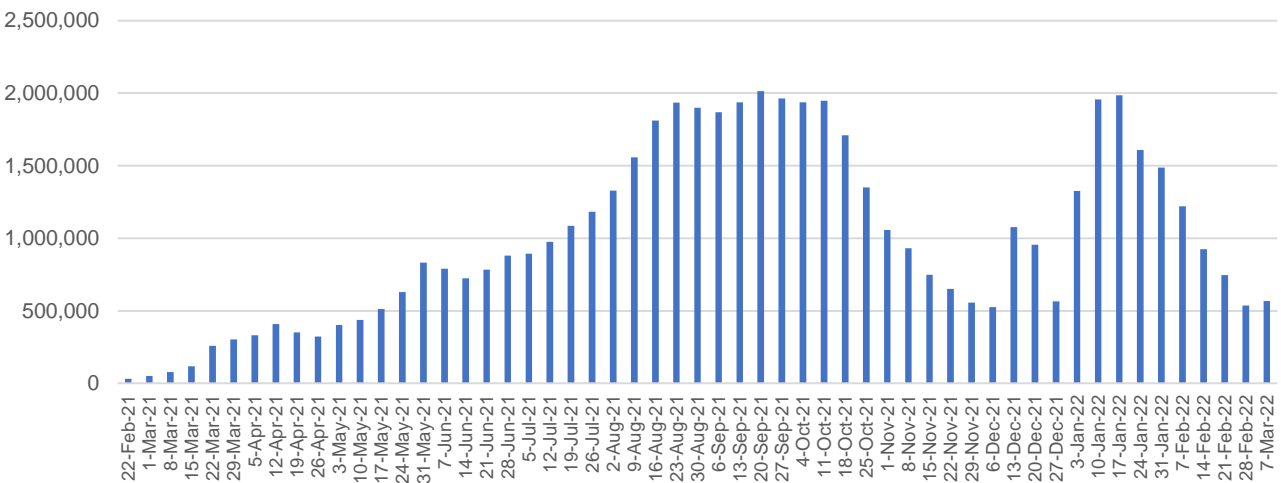
NT	Jurisdictions	Commonwealth
Cumulative	317,638	224,331
Daily increase	687	519

Vaccine milestone charts

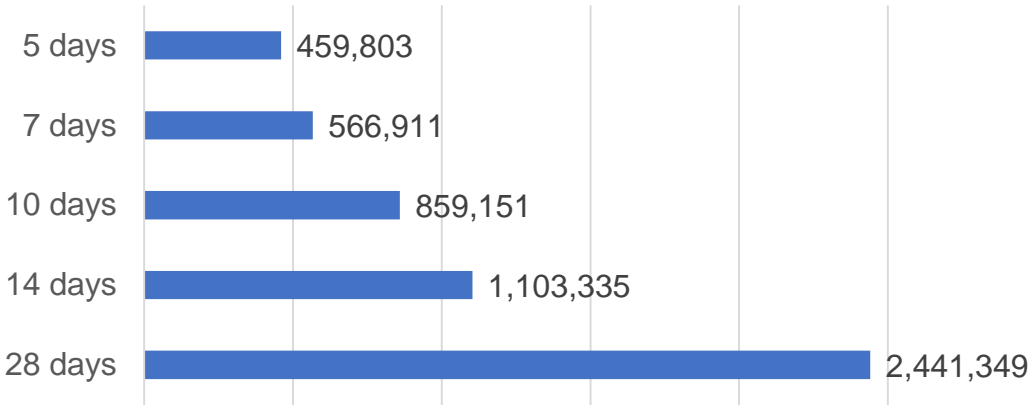
Data as at:
18 Mar 2022

Australia's COVID-19
Vaccine Roadmap

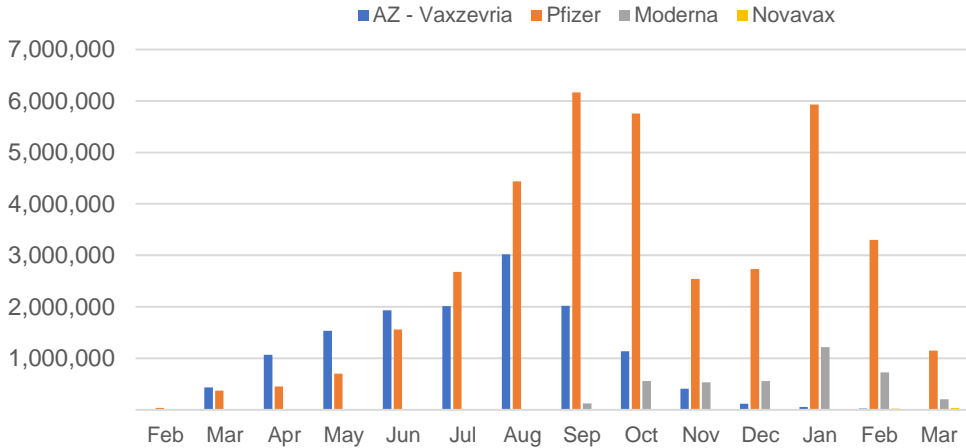
Doses Administered by Week



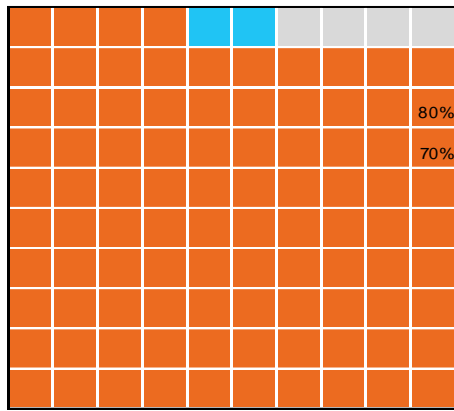
Doses Reported



Doses by administration month and vaccine type



Eligible population percentage coverage



Each square represents 1% of the national population.
Squares are filled as milestones are achieved.

*Sourced from the Australian Immunisation Register.

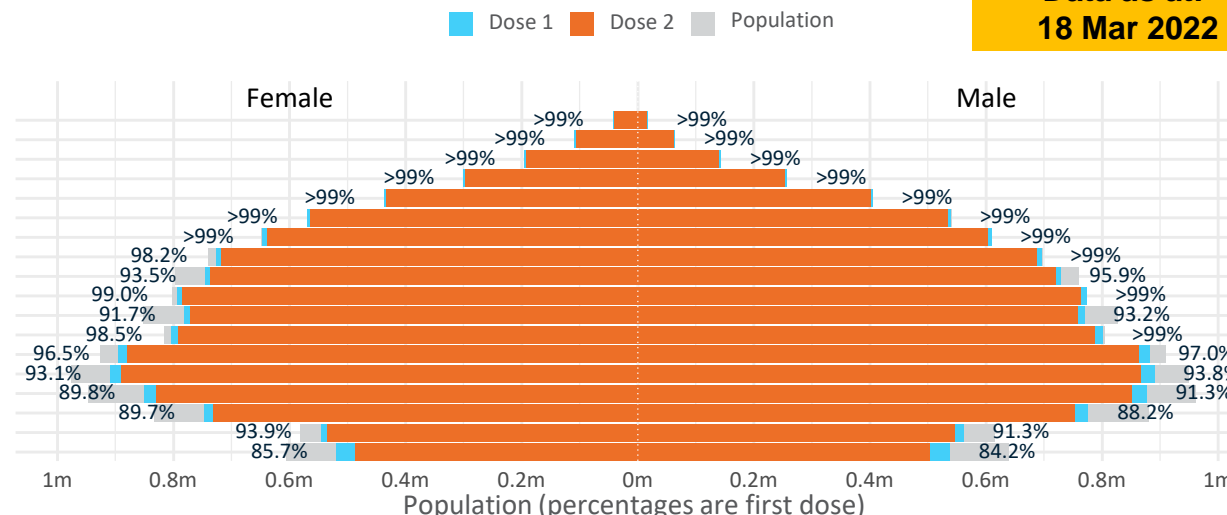
Data as at:
18 Mar 2022

Doses by age and sex

First and second doses by age and sex

	16+	50+	12-15	5-11
Dose 1	96.64% (19,927,047 doses / 20,619,959 people)	>99% (8,806,139 doses / 8,749,703 people)	84.95% (1,056,790 doses / 1,243,990 people)	51.59% (1,174,422 doses / 2,276,638 people)
Dose 2	94.90% (19,568,079 doses / 20,619,959 people)	>99% (8,691,480 doses / 8,749,703 people)	79.57% (989,857 doses / 1,243,990 people)	14.72% (335,219 doses / 2,276,638 people)

Age	Dose 1	Dose 2
95+	59,637 (>99%)	56,227 (>99%)
90-94	173,841 (>99%)	167,967 (>99%)
85-89	339,061 (>99%)	331,615 (>99%)
80-84	557,709 (>99%)	549,825 (>99%)
75-79	842,353 (>99%)	833,292 (>99%)
70-74	1,110,912 (>99%)	1,099,252 (>99%)
65-69	1,256,981 (>99%)	1,241,946 (98.7%)
60-64	1,423,214 (>99%)	1,405,831 (97.9%)
55-59	1,474,471 (94.8%)	1,456,598 (93.6%)
50-54	1,567,960 (>99%)	1,548,927 (>99%)
45-49	1,551,818 (92.6%)	1,530,807 (91.3%)
40-44	1,607,492 (>99%)	1,580,634 (97.6%)
35-39	1,780,189 (97.0%)	1,745,295 (95.1%)
30-34	1,806,325 (93.9%)	1,761,774 (91.6%)
25-29	1,737,243 (91.1%)	1,687,854 (88.5%)
20-24	1,529,602 (89.3%)	1,488,519 (86.9%)
16-19	1,108,239 (92.7%)	1,081,716 (90.5%)
12-15	1,056,790 (85.0%)	989,857 (79.6%)

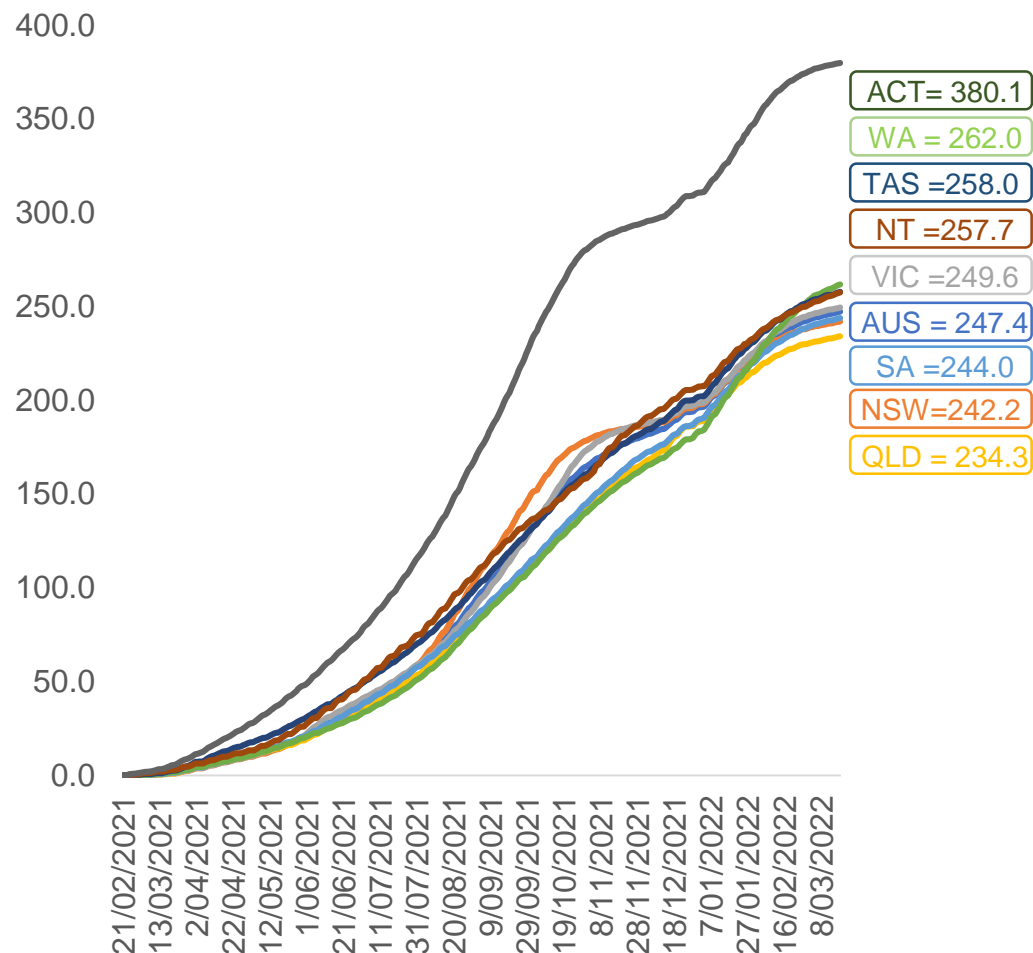


	AUS	ACT	NSW	NT	QLD	SA	TAS	VIC	WA
16 and over - dose 1	19,927,047	351,338	6,300,109	174,482	3,835,697	1,368,134	442,885	5,140,552	2,080,255
16 and over - dose 2	19,568,079	345,905	6,204,668	169,508	3,761,894	1,334,504	432,958	5,064,008	2,037,895
16 and over - population	20,619,959*	344,037	6,565,651	190,571	4,112,707	1,440,400	440,172	5,407,574	2,114,978
16 and over % with dose 1	96.64%	>99%	95.96%	91.56%	93.26%	94.98%	>99%	95.06%	98.36%
16 and over % with dose 2	94.90%	>99%	94.50%	88.95%	91.47%	92.65%	98.36%	93.65%	96.36%
5 to 11 - dose 1	1,174,422	31,520	349,516	12,977	206,339	83,144	28,214	321,036	134,465
5 to 11 - dose 2	335,219	11,729	109,555	3,254	63,562	22,687	10,025	83,931	29,018
5 to 11 - population	2,276,638	39,789	716,460	24,750	478,731	148,816	45,033	578,499	244,154
5 to 11 % with dose 1	51.59%	79.22%	48.78%	52.43%	43.10%	55.87%	62.65%	55.49%	55.07%
5 to 11 % with dose 2	14.72%	29.48%	15.29%	13.15%	13.28%	15.25%	22.26%	14.51%	11.89%
12 to 15 - dose 1	1,056,790	20,086	326,196	10,914	207,818	68,487	22,923	276,316	114,942
12 to 15 - dose 2	989,857	19,224	309,345	9,708	192,747	64,012	21,599	261,873	103,475
12 to 15 - population	1,243,990	19,693	390,330	13,060	270,146	82,747	26,308	308,611	132,869
12 to 15 % with dose 1	84.95%	>99%	83.57%	83.57%	76.93%	82.77%	87.13%	89.54%	86.51%
12 to 15 % with dose 2	79.57%	97.62%	79.25%	74.33%	71.35%	77.36%	82.10%	84.86%	77.88%

*National population will not equal sum of listed jurisdictions due to a small number of people counted in national population residing in some 'other' territories. Sum of state doses will not add to national total as some records are unable to be geocoded to a State or Territory.
Doses sourced from Australian Immunisation Register, population from ABS ERP June 2020

Vaccinations by location

Cumulative total doses administered vs eligible state populations*

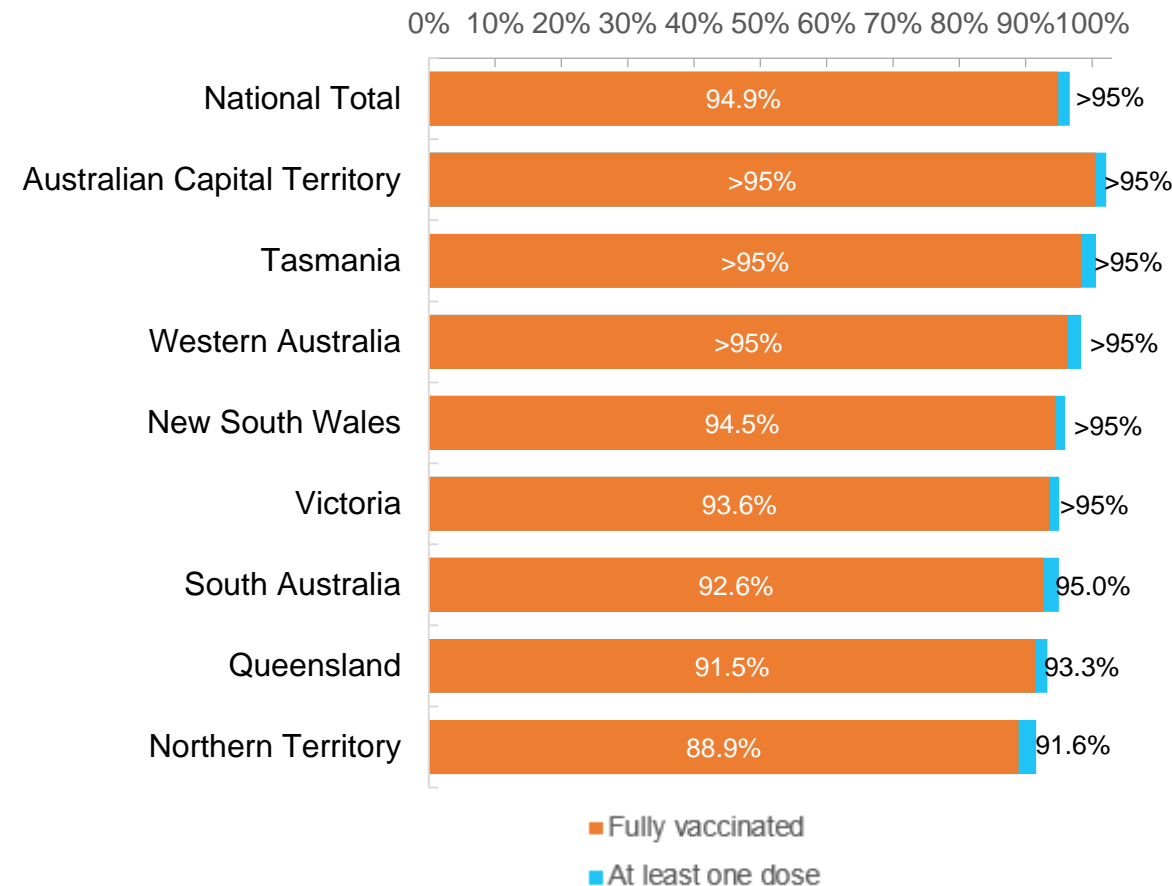


*Not an indication of percentage vaccinated, numbers will exceed 100 due to multiple doses required per person of the population. All doses are included for those aged 12 and above, and are based on vaccination provider location.

Data as at:
18 Mar 2022

Australia's COVID-19
Vaccine Roadmap

First and Second Doses by residential location



Aboriginal and Torres Strait Islander peoples

Number of people vaccinated

Data as at:
15 Mar 2022
Updated weekly

Australia's COVID-19
Vaccine Roadmap



434,708

people over the age of 16
have had at least one dose

83.8%

of people over the age of 16
have had at least one dose



411,587

people over the age of 16
are fully vaccinated

79.4%

of people over the age of 16 are
fully vaccinated



People aged 12 – 15 years

48,327

41,857

68.1%

At least one dose

59.0%

Fully vaccinated

177 Aboriginal community controlled health services (ACCHS)

0#

50

27

44

12

3

21

20

ACT

NSW

NT

QLD

SA

TAS

VIC

WA

Medicare Address State ^{##}	Individuals Dose 1	Individuals Dose 1 %	Individuals Dose 2	Individuals Dose 2 %
Australian Capital Territory	4,837	91.3%	4,713	88.9%
New South Wales	134,608	86.6%	131,283	84.5%
Northern Territory	42,154	89.1%	39,604	83.7%
Queensland	114,770	80.9%	108,282	76.3%
South Australia	19,708	79.3%	18,053	72.7%
Tasmania	13,965	88.4%	13,474	85.3%
Victoria	35,197	89.5%	34,308	87.3%
Western Australia	52,750	84.0%	47,087	75.0%
Unknown/Other Territories	16,719	64.7%	14,783	57.3%
Totals	434,708	83.8%	411,587	79.4%

Source: Australian Immunisation Register

*Identifying as Aboriginal and Torres Strait Islander is optional and the estimated population may be under reported.

**Includes all Aboriginal and Torres Strait Islander peoples who have received a vaccination, not limited to those administered in an ACCHS setting

#ACCHS in the ACT are currently operating as a Commonwealth Vaccine Clinics so not included to avoid double counting

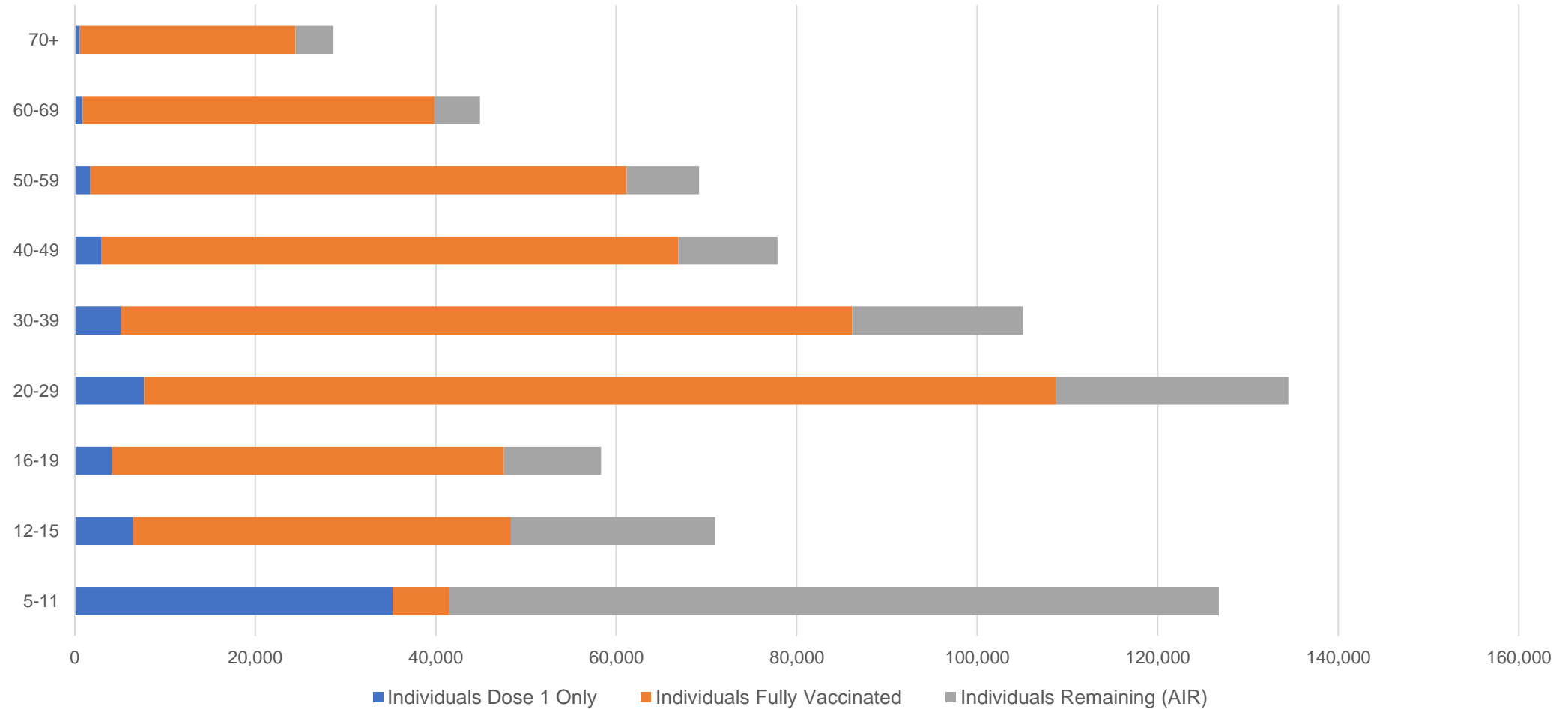
##The above table includes all identified Aboriginal and Torres Strait Islander people who are aged 16 and above by their state of residence.

Aboriginal and Torres Strait Islander peoples

Number of people vaccinated by age

Data as at:
15 Mar 2022
Updated weekly

Australia's COVID-19
Vaccine Roadmap



Source: Australian Immunisation Register

Commonwealth primary care

Data as at:
18 Mar 2022

Australia's COVID-19
Vaccine Roadmap



Primary care vaccine administration sites

5,776	127	177	3,558
GPs	CVCs	ACCHS	Pharmacies



33,855,511 total vaccine doses administered
primary care settings as at 18 March
+ 76,944 recorded in the last 24 hours

Primary care vaccinations by provider type

	Doses administered	Daily increase	7 day increase
General Practice* includes other Commonwealth	27,475,540	50,884	269,077
Pharmacy	6,379,971	26,060	138,407

NSW
11,754,121
(+24,294 daily increase)

VIC
8,444,900
(+18,561 daily increase)

QLD
6,509,761
(+14,074 daily increase)

WA
3,515,836
(+10,921 daily increase)

TAS
624,679
(+1,870 daily increase)

SA
2,007,458
(+4,396 daily increase)

ACT
533,171
(+923 daily increase)

NT
203,488
(+428 daily increase)

262,097

doses administered to persons
residing in other territories or with
missing residential information

*General practice includes Commonwealth Vaccination Clinics, Aboriginal Community Health Centres, Royal Flying Doctor Service and other Commonwealth vaccination facilities

Source: Australian Immunisation Register

Data as at:
18 Mar 2022

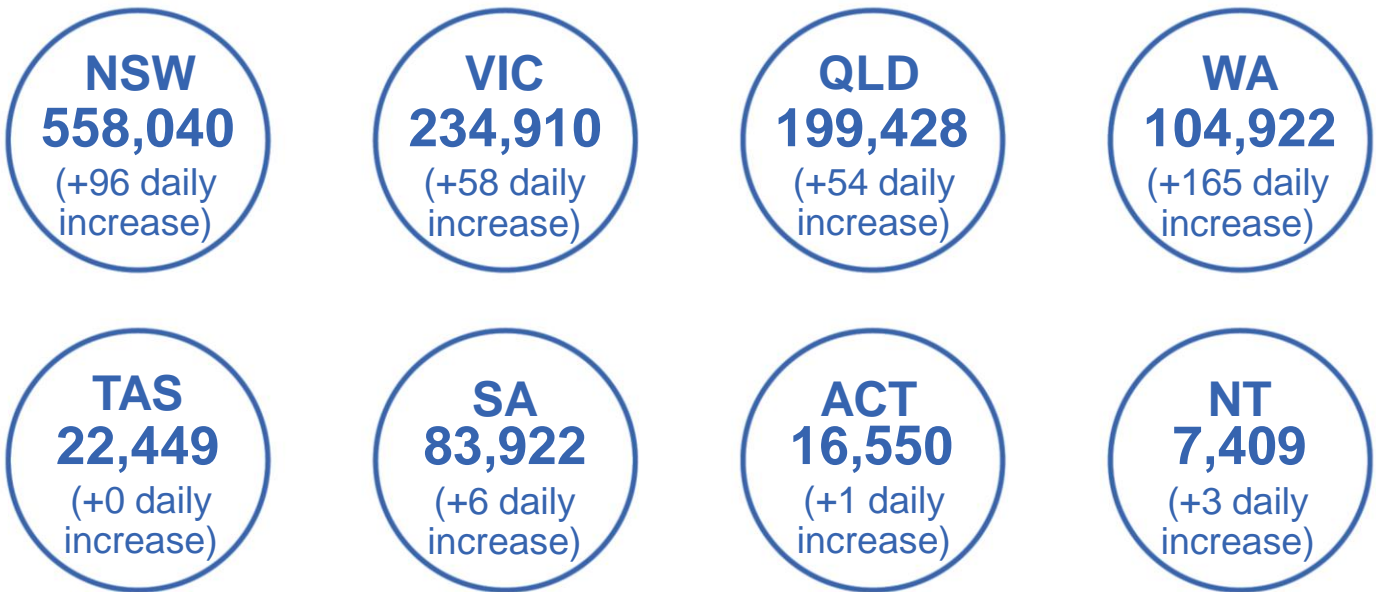
Commonwealth aged care and disability doses administered



1,261,402 (+ 477 last 24 hours)

Total vaccine doses administered in aged care and disability facilities as at 18 March

Number of doses administered as part of the Commonwealth aged and disability care rollout



33,772

doses administered to persons
residing in other territories or with
missing residential information

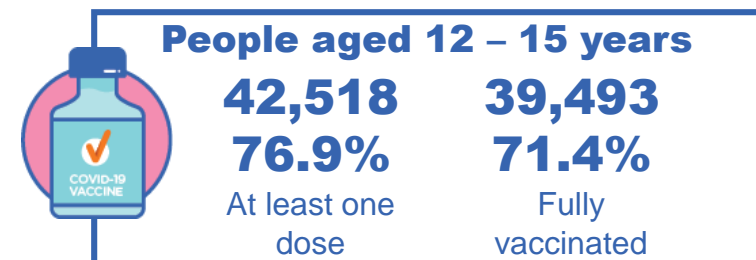
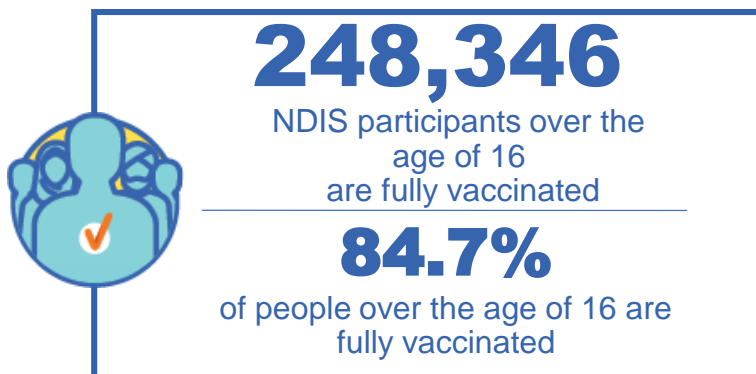
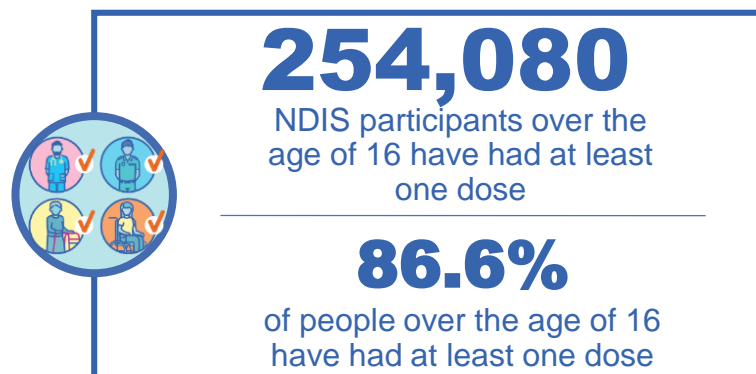
*Sourced from the Australian Immunisation Register. Includes all persons vaccinated at participating residential aged care, disability and related industry settings.
**State level breakdown indicates the residential location and may not align to the state in which the vaccination occurred.

Source: Australian Immunisation Register

National Disability Insurance Scheme (NDIS) reported vaccinations

Data as at:
17 March 2022
Updated weekly

Australia's COVID-19
Vaccine Roadmap



NDIS participant vaccinations

	People aged 16+ with at least one dose	People aged 16+ fully vaccinated	% People aged 16+ with at least one dose	% People aged 16+ fully vaccinated
ACT	4,816	4,745	88.8%	87.5%
NSW	78,269	76,929	87.2%	85.7%
NT	2,203	2,114	77.2%	74.1%
QLD	49,949	48,746	84.9%	82.9%
SA	20,683	20,050	84.3%	81.7%
TAS	6,366	6,176	86.6%	84.0%
VIC	67,692	66,368	87.9%	86.2%
WA	24,102	23,218	87.6%	84.3%
National	254,080	248,346	86.6%	84.7%

Source: Linkage between National Disability Insurance Agency data and the Australian Immunisation Register. Total NDIS participant numbers as at 28th February. Australian Immunisation Register data as at 16 March. Includes all participants regardless of residence type.

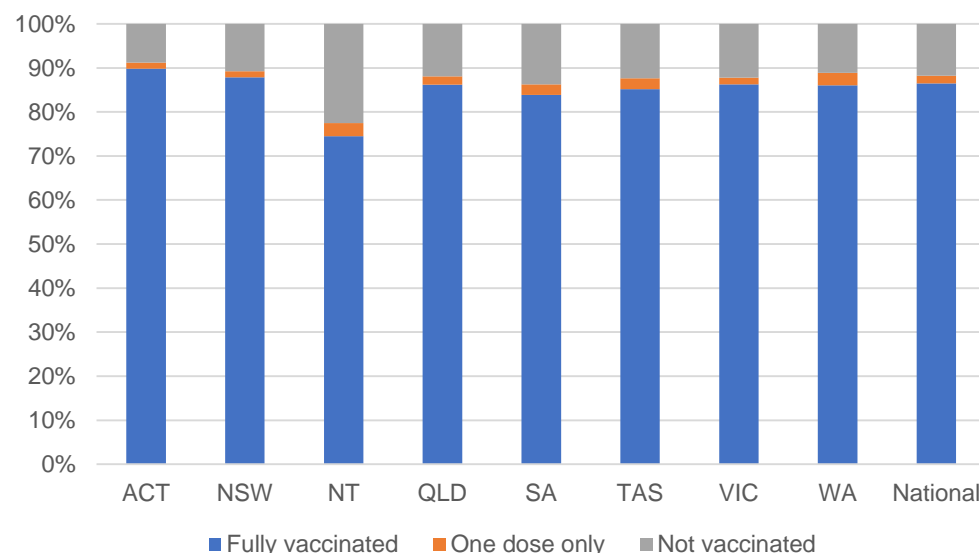
National Disability Insurance Scheme (NDIS) reported vaccinations

Data as at:
17 March 2022
Updated Weekly

Australia's COVID-19
Vaccine Roadmap

NATIONAL	Total people with at least one dose	People fully vaccinated	Total number of individuals in cohort	% People with at least one dose	% People fully vaccinated
NDIS participants living in disability accommodation	20,594	20,201	23,352	88.2%	86.5%

NDIS participants in disability and aged care accommodation



Source: Linkage between National Disability Insurance Agency data and the Australian Immunisation Register. Includes participants residing in disability accommodation only.

Source: Total NDIS participant numbers as at 28th February. Participant data as at 16 March. Australian Immunisation Register data as at 16 March. Worker data as at 17 March.

NDIS workforce vaccinations

	NDIS workers with at least one dose	NDIS workers fully vaccinated	% NDIS workers with at least one dose	% NDIS workers fully vaccinated
NSW	120,409	117,272	98.1%	95.5%
VIC	116,047	109,512	98.3%	92.7%
QLD	69,192	68,334	97.4%	96.2%
WA	32,695	30,144	98.5%	90.8%
SA	35,081	31,596	98.2%	88.4%
TAS	10,794	10,495	99.7%	96.9%
ACT	3,550	3,519	99.6%	98.8%
NT	3,477	3,353	99.7%	96.1%
TOTAL	391,245	374,225	98.1%	93.9%

Source: the NDIS Commission has established a requirement for registered NDIS providers who provide intensive disability support services to report on the vaccination status of workers they employ, or otherwise engage, to deliver NDIS-funded supports and services, and who are required to be vaccinated in accordance with in-force state and territory public health orders. The statistics reflect data reported to the NDIS Commission by registered NDIS providers and should be considered indicative and subject to change

Note: Some registered NDIS providers are yet to report on the vaccination status of their workforce. The NDIS Commission is working with those providers around reporting requirements.

Remaining workers not included include those exempt from vaccination requirements, workers whose vaccination status is not yet verified by the provider (such as workers on leave) and provider reporting anomalies.

Residential aged care vaccination rollout

Australia's COVID-19
Vaccine Roadmap

Data as at:
17 Mar 2022
Updated weekly

Residential aged care facilities status

100%

Commonwealth facilities
visited (2,537 planned sites)

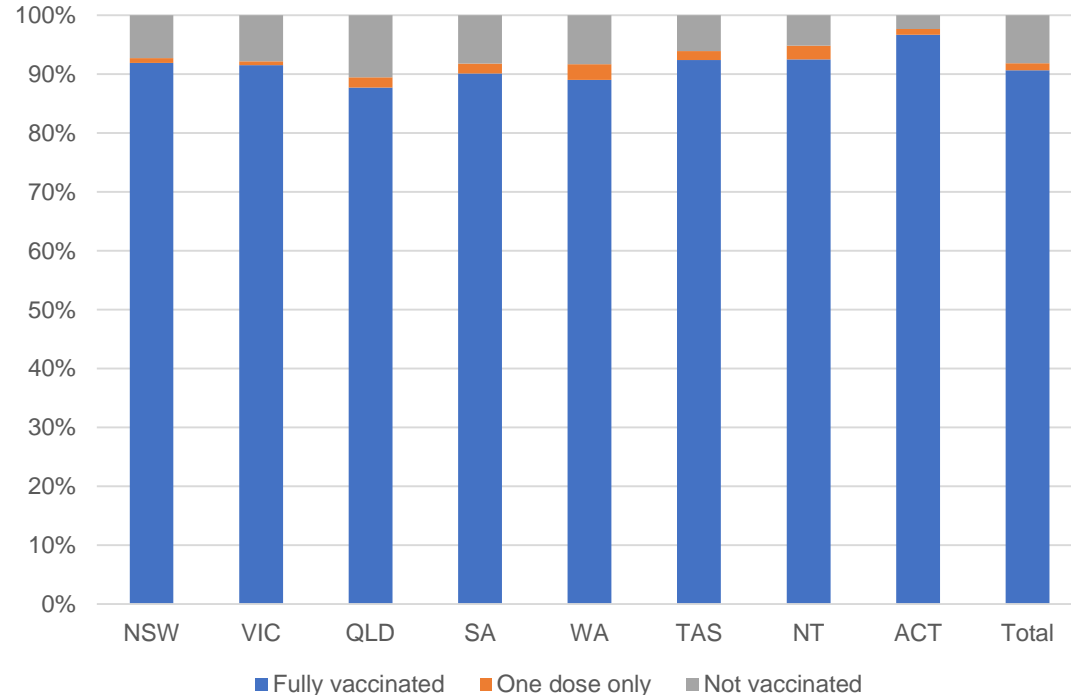
173,424

People fully vaccinated

175,751

People with at least
one dose

Aged care resident vaccinations



Aged care worker vaccinations

Jurisdictions	Total workers with at least one dose	Workers fully vaccinated	% Workers with at least one dose	% Workers fully vaccinated
NSW	78,141	78,131	96.7%	96.7%
VIC	66,947	66,946	97.3%	97.3%
QLD	48,022	48,015	97.8%	97.8%
SA	26,506	26,479	97.7%	97.6%
WA	23,931	23,926	99.7%	99.6%
TAS	7,773	7,773	100.0%	100.0%
NT	833	833	100.0%	100.0%
ACT	3,061	3,061	100.0%	100.0%
Total	255,214	255,164	97.6%	97.6%

Source: My Aged Care Portal vaccination progress

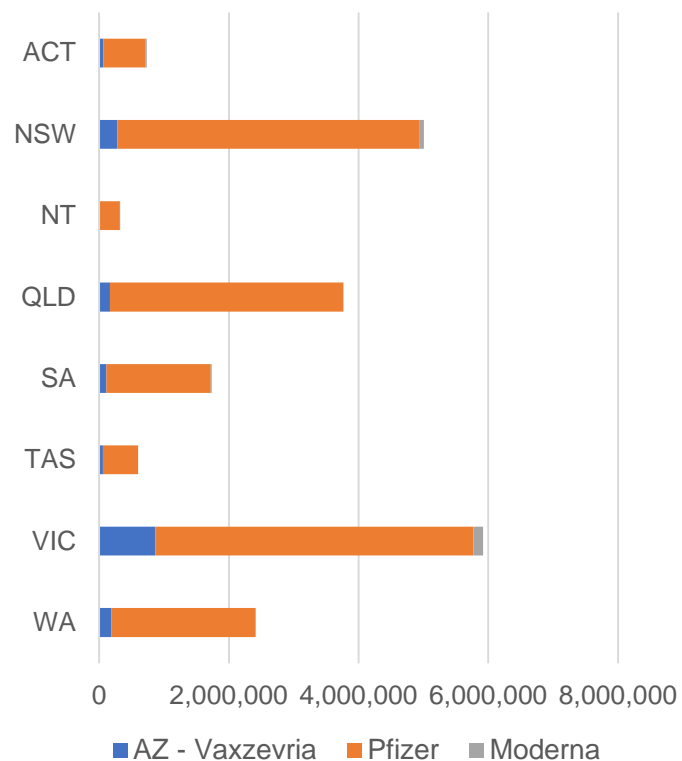
*Status updates are provided by facilities at least once per week. Reporting is updated Monday to Friday to encompass different facility updates being made on different days.

Data is sourced directly from Aged Care Service Providers and is not drawn or closely aligned with data from AIR due to inconsistencies and potential lags in uploading of records.

Data as at:
18 Mar 2022

Jurisdiction administered

Total vaccine doses administered in State and Territory clinics as at 18 March



20,492,005 total vaccine doses administered
in State and Territory clinics as at 18 March
+ **23,475** recorded in the last 24 hours
+ **156,889** recorded in the last 7 days

NSW
5,007,553
(+5,004 daily
increase)

VIC
5,922,243
(+5,408 daily
increase)

QLD
3,762,825
(+3,727 daily
increase)

WA
2,410,917
(+2,874 daily
increase)

TAS
598,961
(+845 daily
increase)

SA
1,739,135
(+2,869 daily
increase)

ACT
732,733
(+2,061 daily
increase)

NT
317,638
(+687 daily
increase)

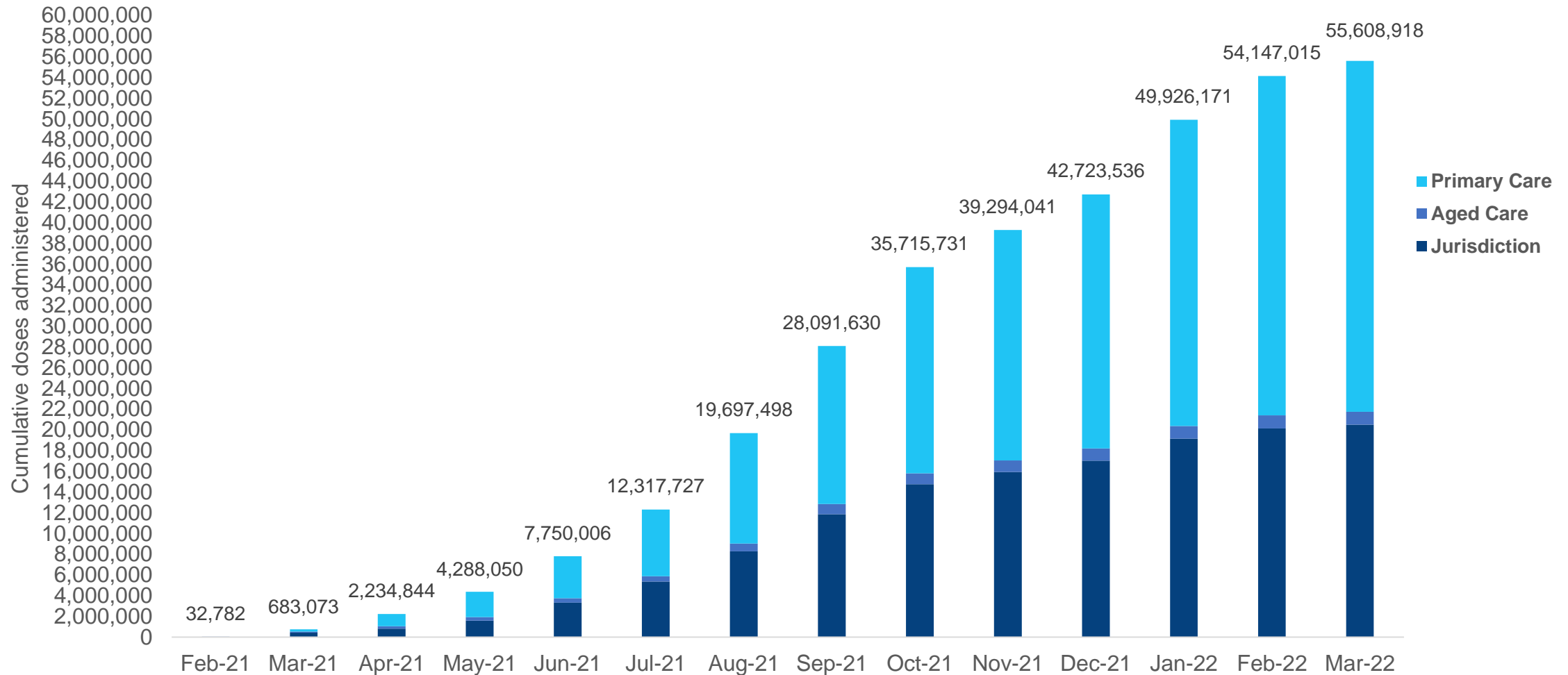
*Sourced from the Australian Immunisation Register. Numbers are calculated as difference in daily cumulative reported numbers to allow for historical corrections.

Source: Australian Immunisation Register

Cumulative doses administered by channel

Data as at:
18 Mar 2022

Australia's COVID-19
Vaccine Roadmap



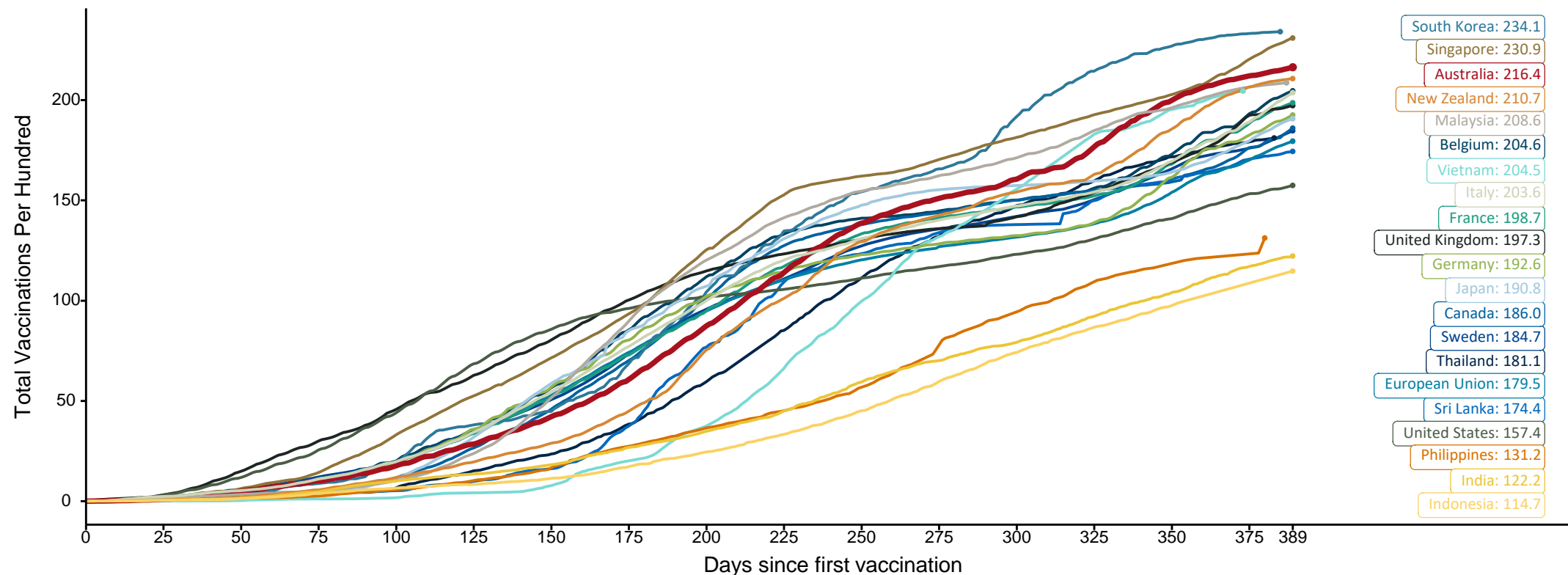
Source: Australian Immunisation Register

Doses at equivalent stages of rollout (Day 389)

Data as at:
18 Mar 2022

The x-axis is truncated at the length of Australia's vaccination program. Countries with intermittent reporting have had their doses per 100 imputed to Australia's current stage of rollout. Israel excluded as it is beyond scale of the graph

Cumulative doses administered (18 Mar): **55,608,918**



Note: From 11 January 2022, data for Australia includes all doses administered to people 5 and over. Prior to 11 January, data was for 12 and over.

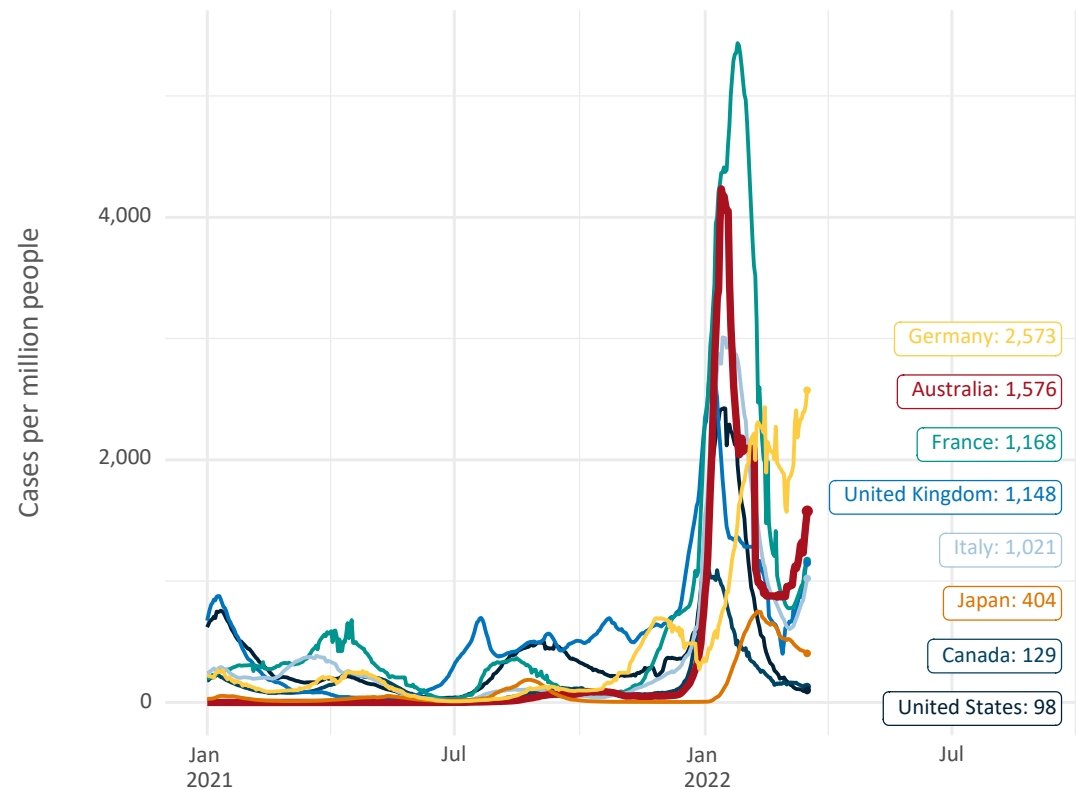
Source: Department of Health (Australia), Our World in Data (international)

Latest data: 18 March

Data as at:
18 Mar 2022

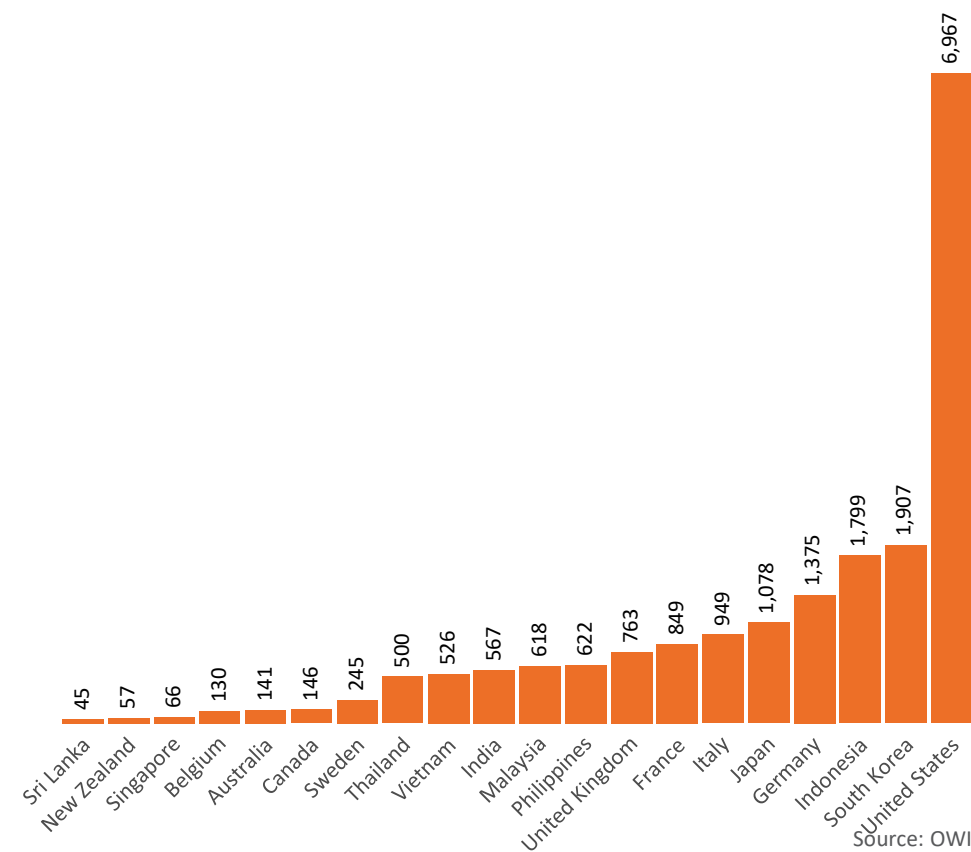
International data – COVID-19

New daily cases per million in 2021, Australia and G7 countries
Smoothed - 7 day average



Source: OWID
Data downloaded: 19 Mar 2022 08:02
Latest data: 17 Mar 2022

COVID-19 deaths in past 7 days - Australia and select countries



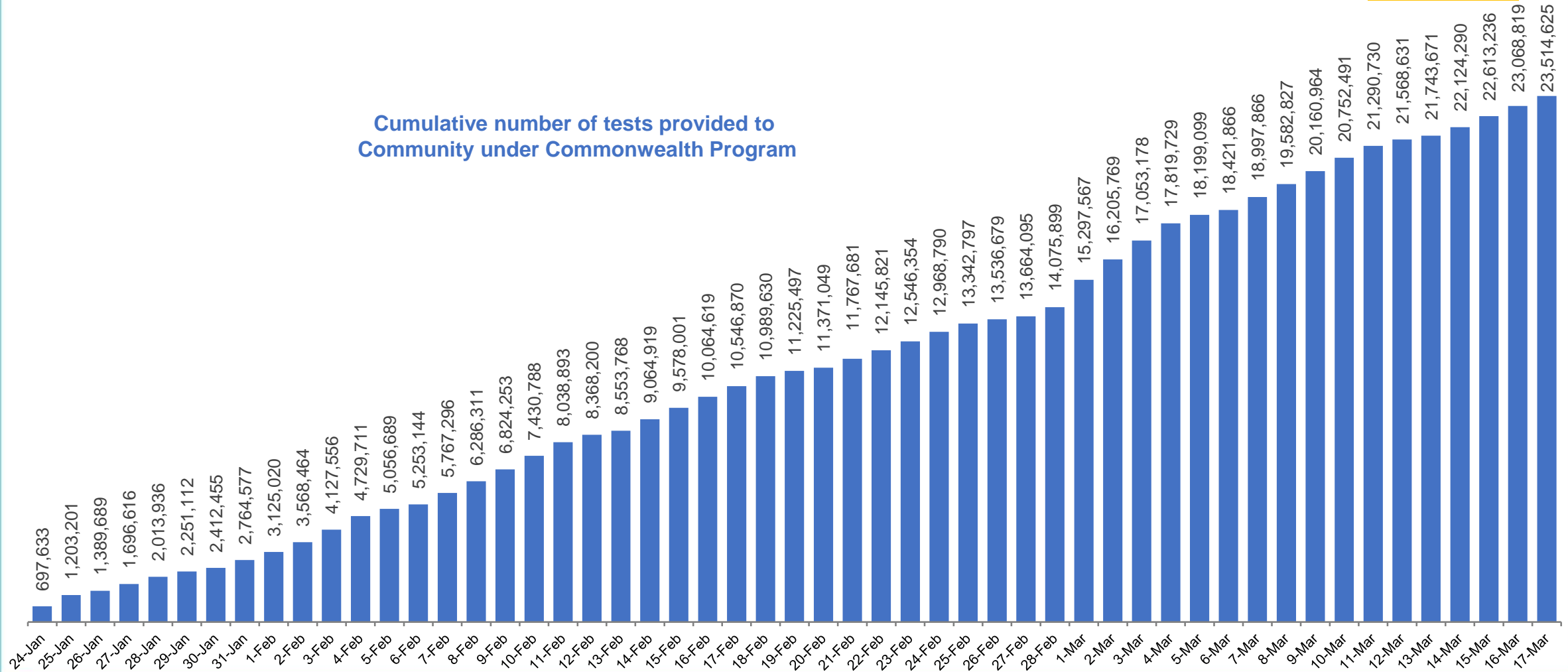
Source: OWID
Data downloaded: 19 Mar 2022 08:02
Latest data: 17 Mar 2022

Concessional rapid antigen test program

5,612 pharmacies have delivered over **23.5 million rapid antigen tests** to more than **3.8m eligible concession card holders** under the Government's concessional rapid antigen test program.

Data as at
18 Mar 2022

Cumulative number of tests provided to
Community under Commonwealth Program



Pandemic Response Payments

Australia's COVID-19
Vaccine Roadmap

Data as at midnight: 13 Mar 2022
Updated weekly



COVID Disaster Payment:	5.89 million claims received - 2.19 million individuals paid a total of \$12.59 billion.
\$200 Income Support Payment:	353,000 claims received - 183,000 individuals paid a total of \$268.9 million.
Pandemic Leave Disaster Payment:	1,350,000 claims received - 848,000 individuals paid a total of \$953.4 million.



COVID Disaster Payment

assisting during a lockdown
event in a Commonwealth
hotspot.

Income Support Payment \$200

for income support
recipients who lost at
least 8 hours of work.

Pandemic Leave Disaster Payment

for those who have to
self-isolate, quarantine
or care.

For more information visit:
servicesaustralia.gov.au

COVID-19 DISASTER PAYMENTS

Northern Territory

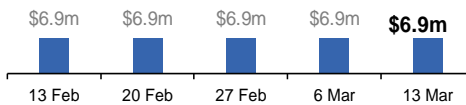
Lockdown (#3) from 16 Nov to 22 Nov
Claiming period ended 27 Dec

**7,500 people have received at least one
COVID Disaster Payment.**

\$6.9m paid out as at 13 Mar 2022.

**Nil paid in initial payments in the week
ending 13 Mar 2022.**

Cumulative payments made by Territory since
activation on 25 Aug 2021.



Victoria

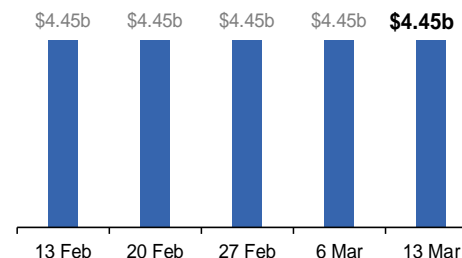
Lockdown (#6) from 6 Aug to 28 Oct
Claiming period ended 9 Dec

**745,000 people have received at least
one COVID Disaster Payment.**

\$4.45b paid out as at 13 Mar 2022.

**\$2,000 paid in initial and reoccurring
payments in the week ending
13 Mar 2022.**

Cumulative payments made by State since
activation on 8 Jun 2021.



New South Wales

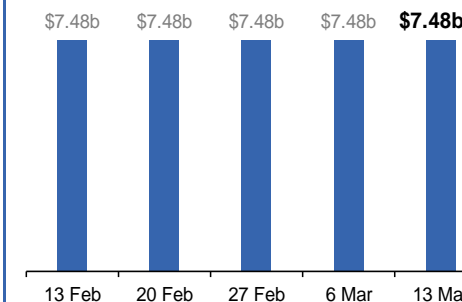
Lockdown from 24 Jun to 10 Oct
Claiming period ended 27 Nov

**1.08m people have received at least
one COVID Disaster Payment.**

\$7.48b paid out as at 13 Mar 2022.

**\$2,000 paid in initial and reoccurring
payments in the week ending
13 Mar 2022.**

Cumulative payments made by State since
activation on 1 Jul 2021.



Australian Capital Territory

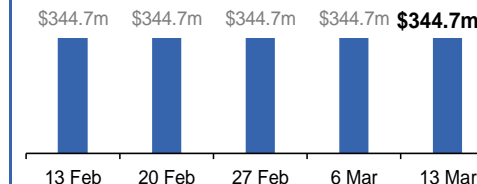
Lockdown from 12 Aug to 14 Oct
Claiming period ended 25 Nov

**65,000 people have received at least
one COVID Disaster Payment.**

\$344.7m paid out as at 13 Mar 2022.

**\$1,000 paid in initial and reoccurring
payments in the week ending
13 Mar 2022.**

Cumulative payments made by Territory since
activation on 20 Aug 2021.



Pandemic Response Payments (continued)

Data as at midnight: 13 Mar 2022
Updated weekly

COVID-19 DISASTER PAYMENTS

