



Australian Government
Operation COVID Shield

COVID-19 Vaccine Roll-out

18 March 2022

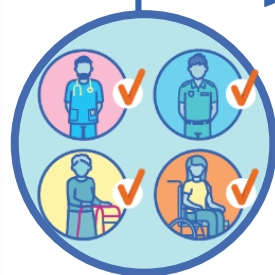
Data as at:
17 Mar 2022

Total vaccine doses



55,508,022 total vaccine
doses administered nationally as at 17 March

+92,821 recorded in the last 24 hours



19,923,628

people have had at least one
dose

>95%

of people over the age of 16
have had at least one dose



19,562,389

people are fully vaccinated

94.9%

of people over the age of 16 are
fully vaccinated



12,402,691

people over the age of 16
who have received more
than two doses

NSW
17,275,711
(+26,401 daily
increase)

VIC
14,646,824
(+21,619 daily
increase)

QLD
10,525,198
(+16,650 daily
increase)

WA
6,038,505
(+14,354 daily
increase)

TAS
1,240,154
(+2,288 daily
increase)

SA
3,815,495
(+7,109 daily
increase)

ACT
1,425,372
(+2,993 daily
increase)

NT
540,763
(+1,407 daily
increase)

*Administration state breakdown indicates state in which a vaccine was administered

**Overall dose count includes instances of more than two doses per person in a small number of cases.

Source: Australian Immunisation Register

Booster Vaccinations

Australia's COVID-19
Vaccine Roadmap

Data as at:
17 Mar 2022



12,402,691 total people who
have received more than two doses nationally
+50,019 recorded in the last 24 hours
66.1% of people who are eligible (18,773,507)
have received more than two doses



177,862
Indigenous people who have
received more than two doses
49.6%
of eligible population (358,485)



160,876
Aged Care Residents who have
received more than two doses##
92.7%
of eligible population (173,466)



166,277 | **20,070**
NDIS participants | NDIS residents
who have received more than two doses#
70.4% | **85.6%**
of eligible population (236,000) | of eligible population (23,000)

*People may belong to multiple groups and could be represented in the above breakdowns multiple times.

NDIS participants data as at 16 March 2022.

Aged Care Residents data as at 17 March 2022.

NSW	People	% of Eligible
Cumulative	3,810,304	62.0%
Daily increase	14,487	

VIC	People	% of Eligible
Cumulative	3,367,920	67.3%
Daily increase	11,791	

QLD	People	% of Eligible
Cumulative	2,139,853	61.0%
Daily increase	8,648	

WA	People	% of Eligible
Cumulative	1,484,039	84.8%
Daily increase	7,973	

SA	People	% of Eligible
Cumulative	876,797	70.0%
Daily increase	3,452	

TAS	People	% of Eligible
Cumulative	276,995	68.2%
Daily increase	1,666	

ACT	People	% of Eligible
Cumulative	251,196	73.2%
Daily increase	602	

NT	People	% of Eligible
Cumulative	103,768	65.6%
Daily increase	743	

91,819

doses administered to persons
residing in other territories or with
missing residential information

Source: Australian Immunisation Register

Vaccinations by residential location

Australia's COVID-19 Vaccine Roadmap

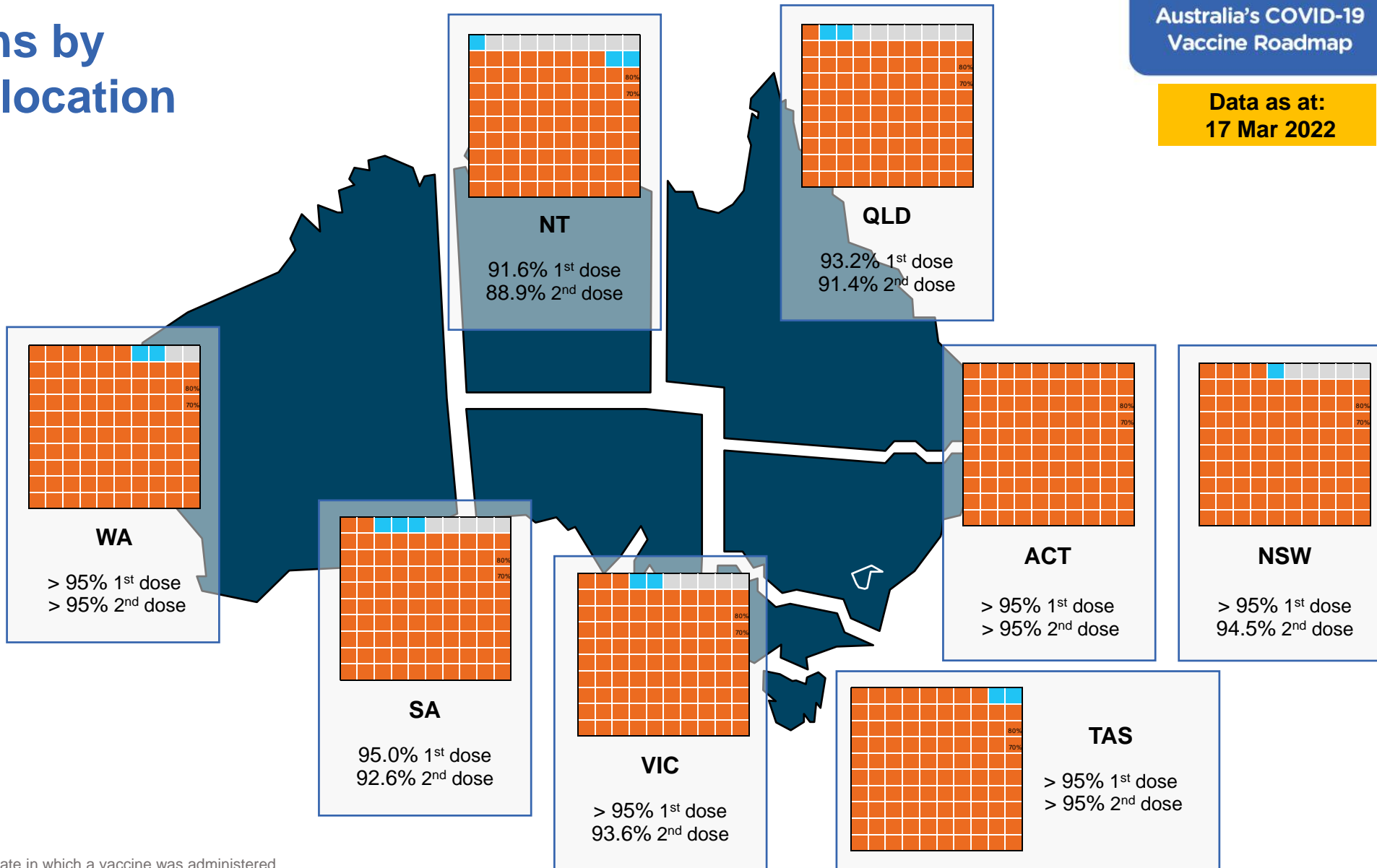
Data as at:
17 Mar 2022

First doses

Age	Today	4 weeks ago	8 weeks ago
16+	>95%	>95%	>95%
50+	>95%	>95%	>95%
70+	>95%	>95%	>95%

Fully vaccinated

Age	Today	4 weeks ago	8 weeks ago
16+	94.9%	94.4%	93.3%
50+	>95%	>95%	>95%
70+	>95%	>95%	>95%



*Residential state may differ from the state in which a vaccine was administered

Commonwealth and Jurisdiction vaccine doses administered

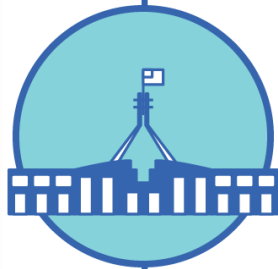
Data as at:
17 Mar 2022



55,508,022 total vaccine
doses administered nationally as at 17 March
+ 92,821 recorded in the last 24 hours



20,468,530
doses administered by state
and territory facilities
+ 21,157
recorded in the last 24 hours



35,039,492
doses administered by
commonwealth facilities
+ 71,664
recorded in the last 24 hours

33,778,567 total vaccine doses
administered in primary care settings
1,260,925 total vaccine doses
administered in aged care and disability
settings

NSW	Jurisdictions	Commonwealth
Cumulative	5,002,549	12,273,162
Daily increase	3,664	22,737

VIC	Jurisdictions	Commonwealth
Cumulative	5,916,835	8,729,989
Daily increase	4,525	17,094

QLD	Jurisdictions	Commonwealth
Cumulative	3,759,098	6,766,100
Daily increase	3,504	13,146

WA	Jurisdictions	Commonwealth
Cumulative	2,408,043	3,630,462
Daily increase	3,412	10,942

TAS	Jurisdictions	Commonwealth
Cumulative	598,116	642,038
Daily increase	493	1,795

SA	Jurisdictions	Commonwealth
Cumulative	1,736,266	2,079,229
Daily increase	2,808	4,301

ACT	Jurisdictions	Commonwealth
Cumulative	730,672	694,700
Daily increase	2,027	966

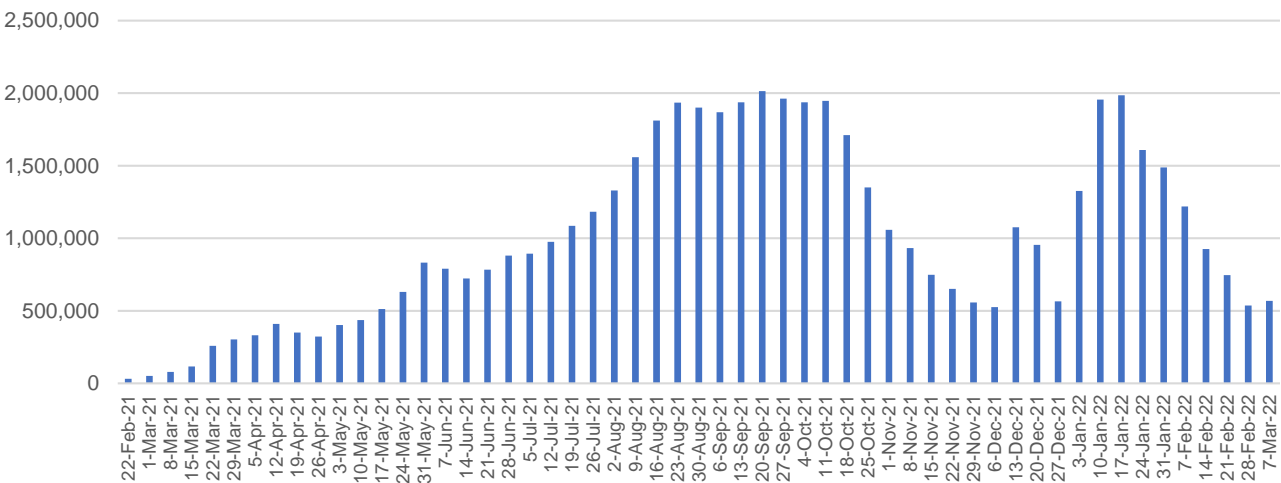
NT	Jurisdictions	Commonwealth
Cumulative	316,951	223,812
Daily increase	724	683

Vaccine milestone charts

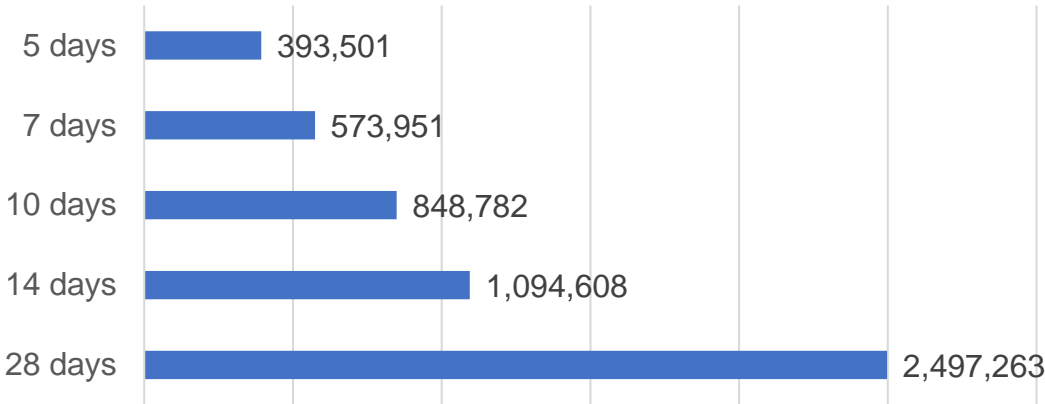
Data as at:
17 Mar 2022

Australia's COVID-19
Vaccine Roadmap

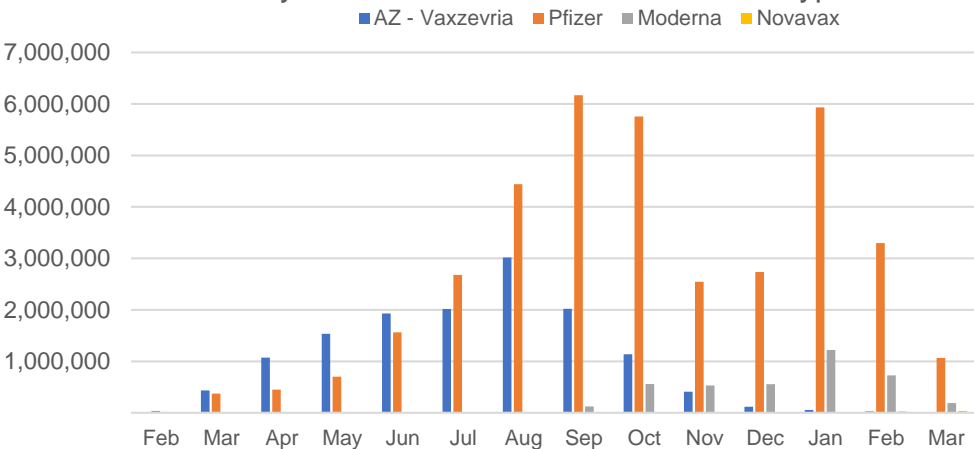
Doses Administered by Week



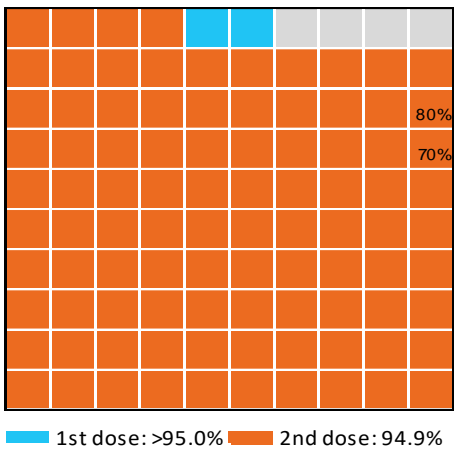
Doses Reported



Doses by administration month and vaccine type



Eligible population percentage coverage



*Each square represents 1% of the national population.
Squares are filled as milestones are achieved.

*Sourced from the Australian Immunisation Register.

Doses by age and sex

First and second doses by age and sex

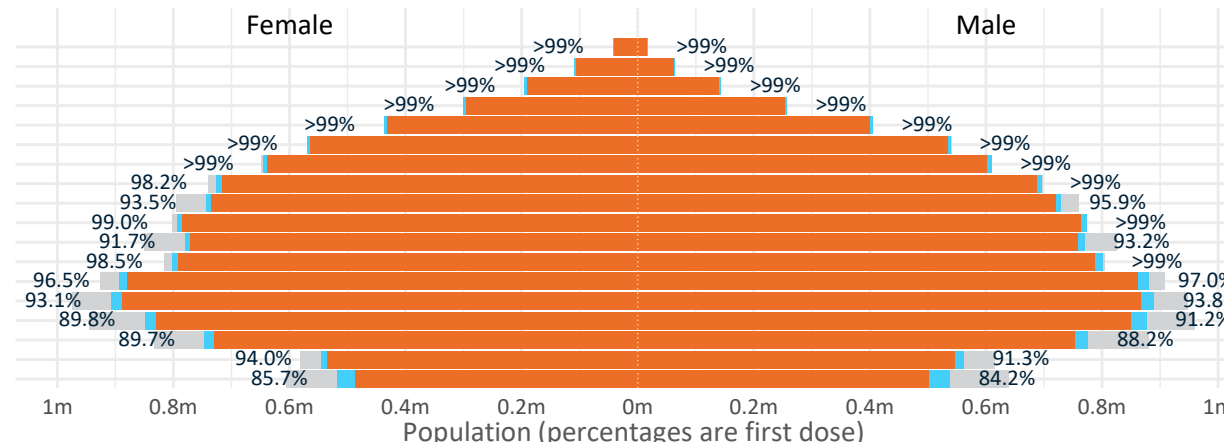
Australia's COVID-19
Vaccine Roadmap

Data as at:
17 Mar 2022

Age	Dose 1	Dose 2
95+	59,555 (>99%)	56,134 (>99%)
90-94	173,763 (>99%)	167,879 (>99%)
85-89	338,954 (>99%)	331,476 (>99%)
80-84	557,546 (>99%)	549,628 (>99%)
75-79	842,052 (>99%)	832,908 (>99%)
70-74	1,110,781 (>99%)	1,099,013 (>99%)
65-69	1,256,790 (>99%)	1,241,608 (98.7%)
60-64	1,423,024 (>99%)	1,405,563 (97.8%)
55-59	1,474,430 (94.8%)	1,456,386 (93.6%)
50-54	1,567,713 (>99%)	1,548,506 (99.0%)
45-49	1,551,694 (92.5%)	1,530,492 (91.3%)
40-44	1,607,035 (>99%)	1,579,969 (97.5%)
35-39	1,779,823 (97.0%)	1,744,639 (95.1%)
30-34	1,805,997 (93.9%)	1,761,231 (91.6%)
25-29	1,736,851 (91.1%)	1,687,258 (88.5%)
20-24	1,529,339 (89.3%)	1,488,127 (86.9%)
16-19	1,108,281 (92.7%)	1,081,572 (90.4%)
12-15	1,056,410 (84.9%)	988,740 (79.5%)

	16+	50+	12-15	5-11
Dose 1	96.62% (19,923,628 doses / 20,619,959 people)	>99% (8,804,608 doses / 8,749,703 people)	84.92% (1,056,410 doses / 1,243,990 people)	51.50% (1,172,444 doses / 2,276,638 people)
Dose 2	94.87% (19,562,389 doses / 20,619,959 people)	>99% (8,689,101 doses / 8,749,703 people)	79.48% (988,740 doses / 1,243,990 people)	13.26% (301,833 doses / 2,276,638 people)

Dose 1 Dose 2 Population

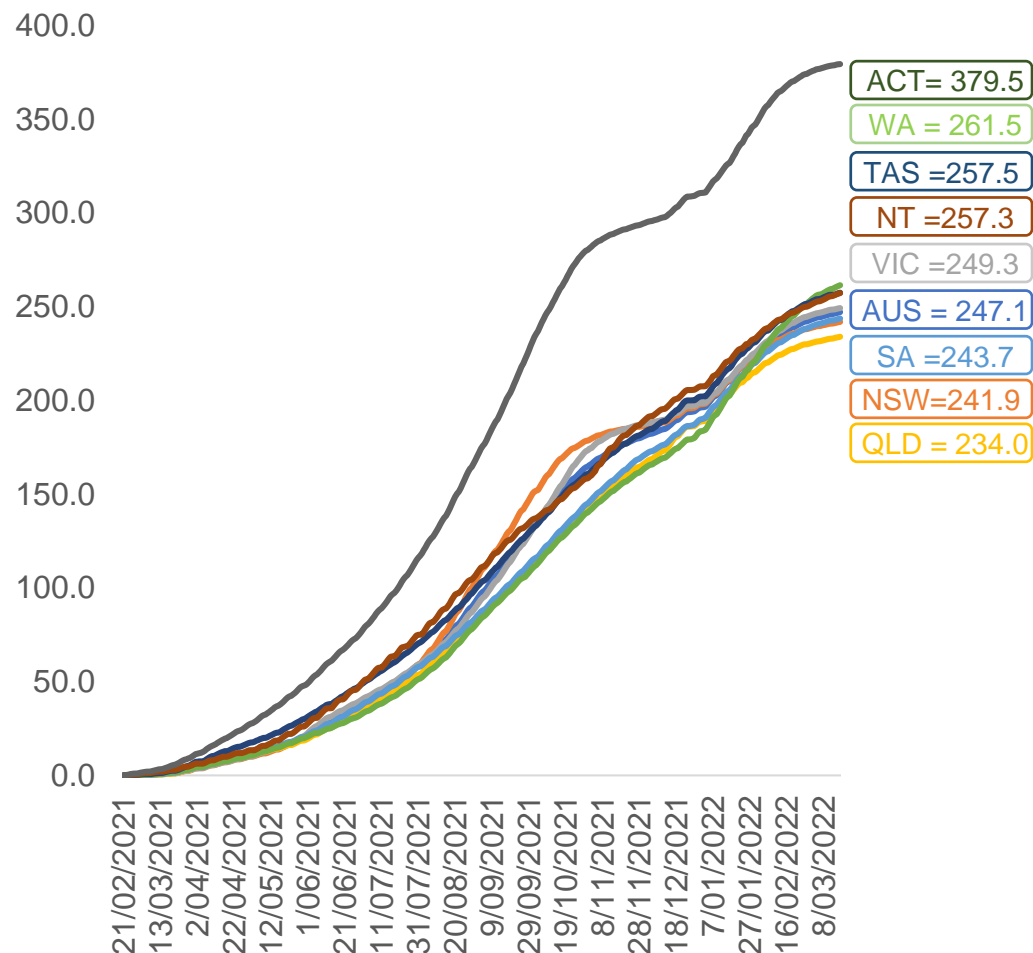


	AUS	ACT	NSW	NT	QLD	SA	TAS	VIC	WA
16 and over - dose 1	19,923,628	351,321	6,299,542	174,483	3,834,843	1,367,936	442,730	5,140,020	2,079,856
16 and over - dose 2	19,562,389	345,912	6,203,966	169,486	3,760,267	1,333,933	432,787	5,063,340	2,036,698
16 and over - population	20,619,959*	344,037	6,565,651	190,571	4,112,707	1,440,400	440,172	5,407,574	2,114,978
16 and over % with dose 1	96.62%	>99%	95.95%	91.56%	93.24%	94.97%	>99%	95.05%	98.34%
16 and over % with dose 2	94.87%	>99%	94.49%	88.94%	91.43%	92.61%	98.32%	93.63%	96.30%
5 to 11 - dose 1	1,172,444	31,498	348,853	12,957	206,193	83,078	28,198	320,660	133,852
5 to 11 - dose 2	301,833	10,707	98,509	2,946	57,892	20,066	9,570	74,972	25,869
5 to 11 - population	2,276,638	39,789	716,460	24,750	478,731	148,816	45,033	578,499	244,154
5 to 11 % with dose 1	51.50%	79.16%	48.69%	52.35%	43.07%	55.83%	62.62%	55.43%	54.82%
5 to 11 % with dose 2	13.26%	26.91%	13.75%	11.90%	12.09%	13.48%	21.25%	12.96%	10.60%
12 to 15 - dose 1	1,056,410	20,074	326,125	10,918	207,789	68,473	22,916	276,239	114,800
12 to 15 - dose 2	988,740	19,193	309,054	9,703	192,543	63,955	21,576	261,672	103,202
12 to 15 - population	1,243,990	19,693	390,330	13,060	270,146	82,747	26,308	308,611	132,869
12 to 15 % with dose 1	84.92%	>99%	83.55%	83.60%	76.92%	82.75%	87.11%	89.51%	86.40%
12 to 15 % with dose 2	79.48%	97.46%	79.18%	74.30%	71.27%	77.29%	82.01%	84.79%	77.67%

*National population will not equal sum of listed jurisdictions due to a small number of people counted in national population residing in some 'other' territories. Sum of state doses will not add to national total as some records are unable to be geocoded to a State or Territory.
Doses sourced from Australian Immunisation Register, population from ABS ERP June 2020

Vaccinations by location

Cumulative total doses administered vs eligible state populations*

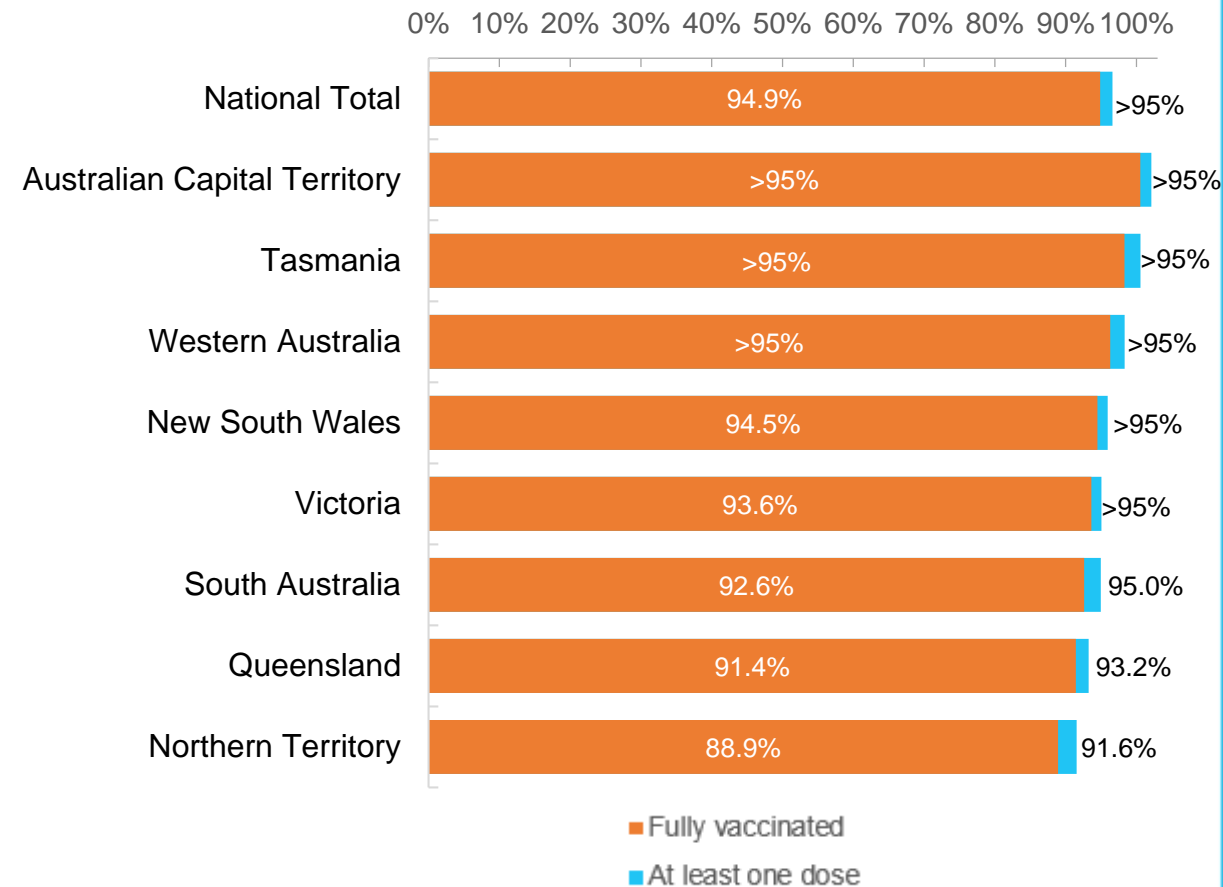


*Not an indication of percentage vaccinated, numbers will exceed 100 due to multiple doses required per person of the population. All doses are included for those aged 12 and above, and are based on vaccination provider location.

Data as at:
17 Mar 2022

Australia's COVID-19
Vaccine Roadmap

First and Second Doses by residential location



Aboriginal and Torres Strait Islander peoples

Number of people vaccinated

Data as at:
15 Mar 2022
Updated weekly

Australia's COVID-19
Vaccine Roadmap



434,708

people over the age of 16
have had at least one dose

83.8%

of people over the age of 16
have had at least one dose



411,587

people over the age of 16
are fully vaccinated

79.4%

of people over the age of 16 are
fully vaccinated



People aged 12 – 15 years

48,327

41,857

68.1%

At least one dose

59.0%

Fully vaccinated

177 Aboriginal community controlled health services (ACCHS)

0#

50

27

44

12

3

21

20

ACT

NSW

NT

QLD

SA

TAS

VIC

WA

Medicare Address State ^{##}	Individuals Dose 1	Individuals Dose 1 %	Individuals Dose 2	Individuals Dose 2 %
Australian Capital Territory	4,837	91.3%	4,713	88.9%
New South Wales	134,608	86.6%	131,283	84.5%
Northern Territory	42,154	89.1%	39,604	83.7%
Queensland	114,770	80.9%	108,282	76.3%
South Australia	19,708	79.3%	18,053	72.7%
Tasmania	13,965	88.4%	13,474	85.3%
Victoria	35,197	89.5%	34,308	87.3%
Western Australia	52,750	84.0%	47,087	75.0%
Unknown/Other Territories	16,719	64.7%	14,783	57.3%
Totals	434,708	83.8%	411,587	79.4%

Source: Australian Immunisation Register

*Identifying as Aboriginal and Torres Strait Islander is optional and the estimated population may be under reported.

**Includes all Aboriginal and Torres Strait Islander peoples who have received a vaccination, not limited to those administered in an ACCHS setting

##ACCHS in the ACT are currently operating as a Commonwealth Vaccine Clinics so not included to avoid double counting

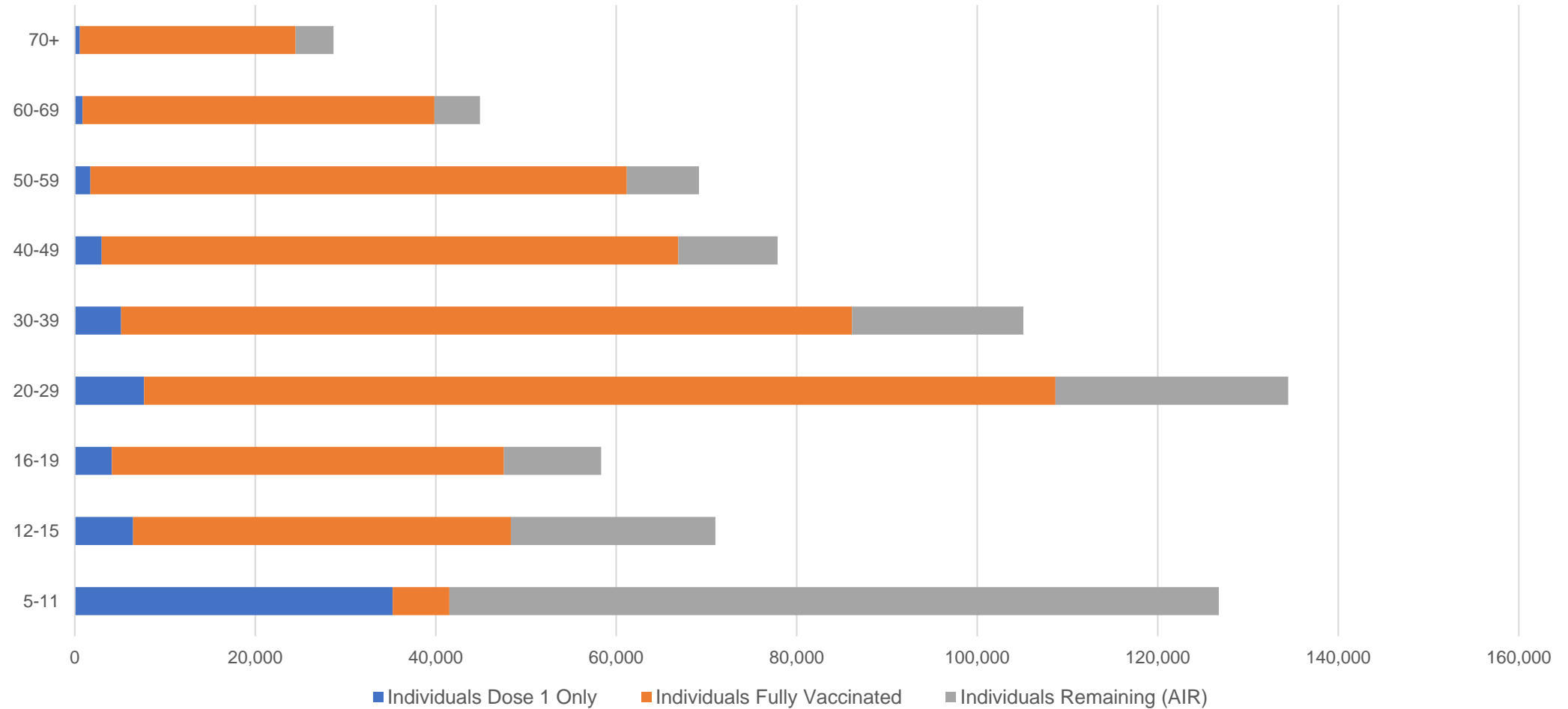
##The above table includes all identified Aboriginal and Torres Strait Islander people who are aged 16 and above by their state of residence.

Aboriginal and Torres Strait Islander peoples

Number of people vaccinated by age

Data as at:
15 Mar 2022
Updated weekly

Australia's COVID-19
Vaccine Roadmap



Source: Australian Immunisation Register

Commonwealth primary care

Data as at:
17 Mar 2022

Australia's COVID-19
Vaccine Roadmap



Primary care vaccine administration sites

5,788	128	177	3,585
GPs	CVCs	ACCHS	Pharmacies



33,778,567 total vaccine doses administered
primary care settings as at 17 March
+ 71,058 recorded in the last 24 hours

Primary care vaccinations by provider type

	Doses administered	Daily increase	7 day increase
General Practice* includes other Commonwealth	27,424,656	46,983	272,391
Pharmacy	6,353,911	24,075	141,367

NSW
11,729,827
(+22,293 daily increase)

VIC
8,426,339
(+16,999 daily increase)

QLD
6,495,687
(+12,971 daily increase)

WA
3,504,915
(+10,522 daily increase)

TAS
622,809
(+1,778 daily increase)

SA
2,003,062
(+4,273 daily increase)

ACT
532,248
(+851 daily increase)

NT
203,060
(+642 daily increase)

260,620

doses administered to persons
residing in other territories or with
missing residential information

*General practice includes Commonwealth Vaccination Clinics, Aboriginal Community Health Centres, Royal Flying Doctor Service and other Commonwealth vaccination facilities

Source: Australian Immunisation Register

Data as at:
17 Mar 2022

Commonwealth aged care and disability doses administered



1,260,925 (+ 606 last 24 hours)

Total vaccine doses administered in aged care and disability facilities as at 17 March

Number of doses administered as part of the Commonwealth aged and disability care rollout

NSW
557,944
(+241 daily increase)

VIC
234,852
(+15 daily increase)

QLD
199,374
(+89 daily increase)

WA
104,757
(+189 daily increase)

TAS
22,449
(+4 daily increase)

SA
83,916
(+3 daily increase)

ACT
16,549
(+20 daily increase)

NT
7,406
(+4 daily increase)

33,678

doses administered to persons
residing in other territories or with
missing residential information

*Sourced from the Australian Immunisation Register. Includes all persons vaccinated at participating residential aged care, disability and related industry settings.

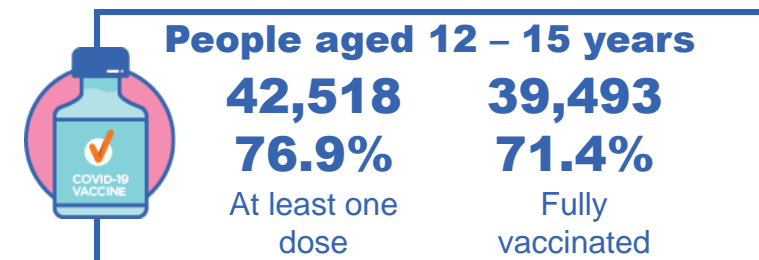
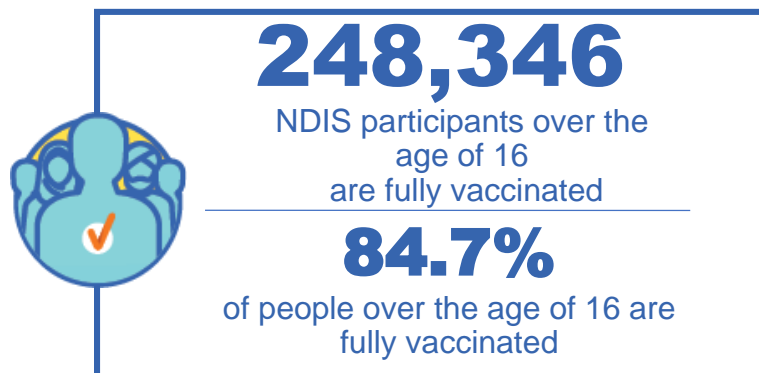
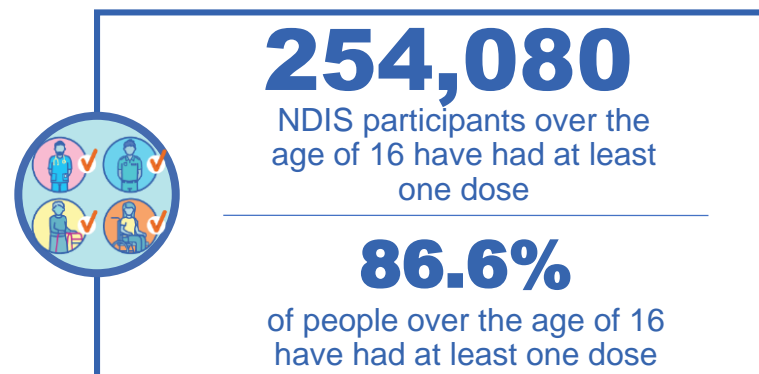
**State level breakdown indicates the residential location and may not align to the state in which the vaccination occurred.

Source: Australian Immunisation Register

National Disability Insurance Scheme (NDIS) reported vaccinations

Data as at:
17 March 2022
Updated weekly

Australia's COVID-19
Vaccine Roadmap



NDIS participant vaccinations

	People aged 16+ with at least one dose	People aged 16+ fully vaccinated	% People aged 16+ with at least one dose	% People aged 16+ fully vaccinated
ACT	4,816	4,745	88.8%	87.5%
NSW	78,269	76,929	87.2%	85.7%
NT	2,203	2,114	77.2%	74.1%
QLD	49,949	48,746	84.9%	82.9%
SA	20,683	20,050	84.3%	81.7%
TAS	6,366	6,176	86.6%	84.0%
VIC	67,692	66,368	87.9%	86.2%
WA	24,102	23,218	87.6%	84.3%
National	254,080	248,346	86.6%	84.7%

Source: Linkage between National Disability Insurance Agency data and the Australian Immunisation Register. Total NDIS participant numbers as at 28th February. Australian Immunisation Register data as at 16 March. Includes all participants regardless of residence type.

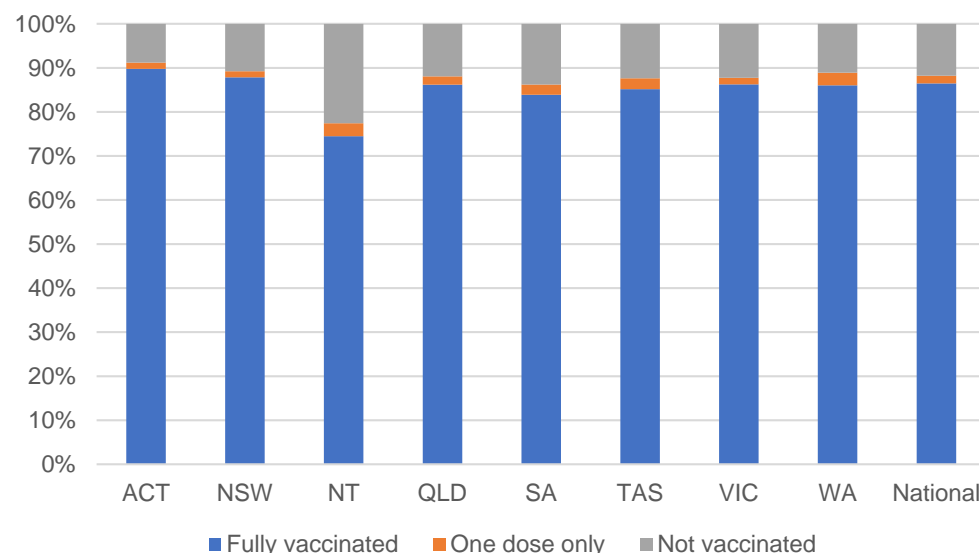
National Disability Insurance Scheme (NDIS) reported vaccinations

Data as at:
17 March 2022
Updated Weekly

Australia's COVID-19
Vaccine Roadmap

NATIONAL	Total people with at least one dose	People fully vaccinated	Total number of individuals in cohort	% People with at least one dose	% People fully vaccinated
NDIS participants living in disability accommodation	20,594	20,201	23,352	88.2%	86.5%

NDIS participants in disability and aged care accommodation



Source: Linkage between National Disability Insurance Agency data and the Australian Immunisation Register. Includes participants residing in disability accommodation only.
Source: Total NDIS participant numbers as at 28th February. Participant data as at 16 March. Australian Immunisation Register data as at 16 March. Worker data as at 17 March.

NDIS workforce vaccinations

	NDIS workers with at least one dose	NDIS workers fully vaccinated	% NDIS workers with at least one dose	% NDIS workers fully vaccinated
NSW	120,409	117,272	98.1%	95.5%
VIC	116,047	109,512	98.3%	92.7%
QLD	69,192	68,334	97.4%	96.2%
WA	32,695	30,144	98.5%	90.8%
SA	35,081	31,596	98.2%	88.4%
TAS	10,794	10,495	99.7%	96.9%
ACT	3,550	3,519	99.6%	98.8%
NT	3,477	3,353	99.7%	96.1%
TOTAL	391,245	374,225	98.1%	93.9%

Source: the NDIS Commission has established a requirement for registered NDIS providers who provide intensive disability support services to report on the vaccination status of workers they employ, or otherwise engage, to deliver NDIS-funded supports and services, and who are required to be vaccinated in accordance with in-force state and territory public health orders. The statistics reflect data reported to the NDIS Commission by registered NDIS providers and should be considered indicative and subject to change

Note: Some registered NDIS providers are yet to report on the vaccination status of their workforce. The NDIS Commission is working with those providers around reporting requirements.

Remaining workers not included include those exempt from vaccination requirements, workers whose vaccination status is not yet verified by the provider (such as workers on leave) and provider reporting anomalies.

Residential aged care vaccination rollout

Data as at:
17 Mar 2022
Updated weekly

Residential aged care facilities status

100%

Commonwealth facilities visited (2,537 planned sites)

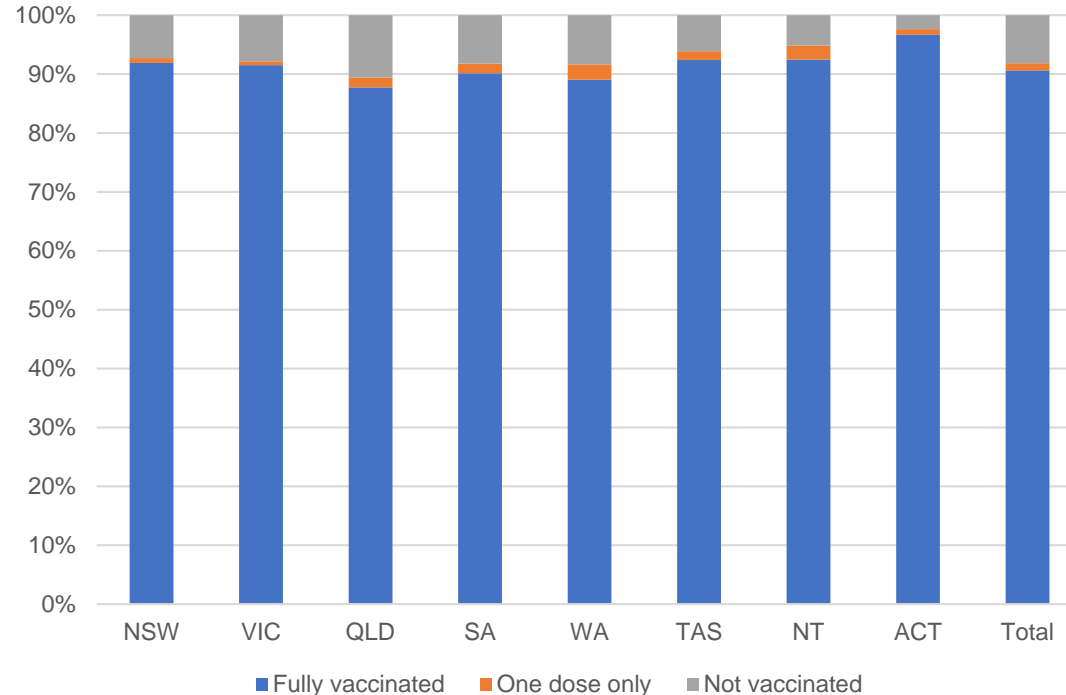
173,424

People fully vaccinated

175,751

People with at least one dose

Aged care resident vaccinations



Aged care worker vaccinations

Jurisdictions	Total workers with at least one dose	Workers fully vaccinated	% Workers with at least one dose	% Workers fully vaccinated
NSW	78,141	78,131	96.7%	96.7%
VIC	66,947	66,946	97.3%	97.3%
QLD	48,022	48,015	97.8%	97.8%
SA	26,506	26,479	97.7%	97.6%
WA	23,931	23,926	99.7%	99.6%
TAS	7,773	7,773	100.0%	100.0%
NT	833	833	100.0%	100.0%
ACT	3,061	3,061	100.0%	100.0%
Total	255,214	255,164	97.6%	97.6%

Source: My Aged Care Portal vaccination progress

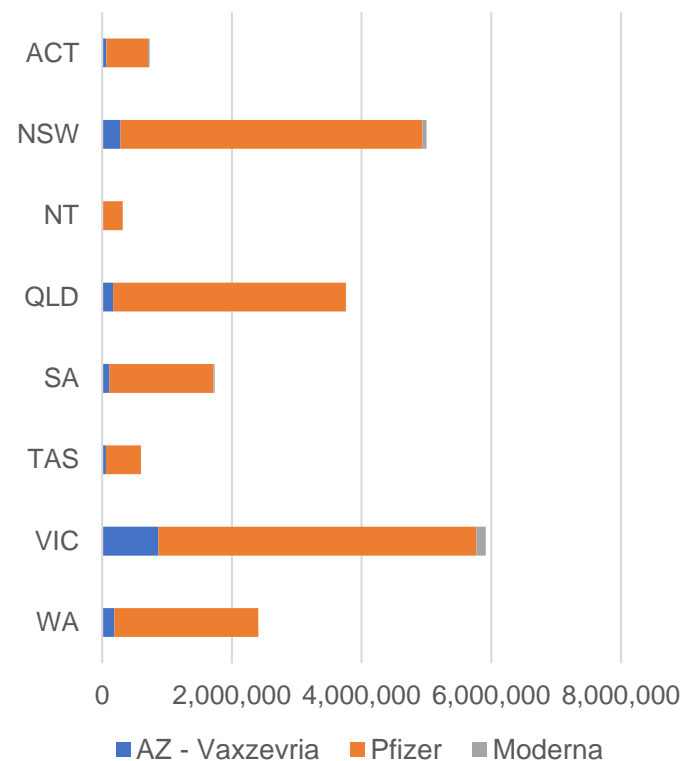
*Status updates are provided by facilities at least once per week. Reporting is updated Monday to Friday to encompass different facility updates being made on different days.

Data is sourced directly from Aged Care Service Providers and is not drawn or closely aligned with data from AIR due to inconsistencies and potential lags in uploading of records.

Data as at:
17 Mar 2022

Jurisdiction administered

Total vaccine doses administered in State and Territory clinics as at 17 March



20,468,530 total vaccine doses administered
in State and Territory clinics as at 17 March
+ **21,157** recorded in the last 24 hours
+ **157,351** recorded in the last 7 days

NSW
5,002,549
(+3,664 daily
increase)

VIC
5,916,835
(+4,525 daily
increase)

QLD
3,759,098
(+3,504 daily
increase)

WA
2,408,043
(+3,412 daily
increase)

TAS
598,116
(+493 daily
increase)

SA
1,736,266
(+2,808 daily
increase)

ACT
730,672
(+2,027 daily
increase)

NT
316,951
(+724 daily
increase)

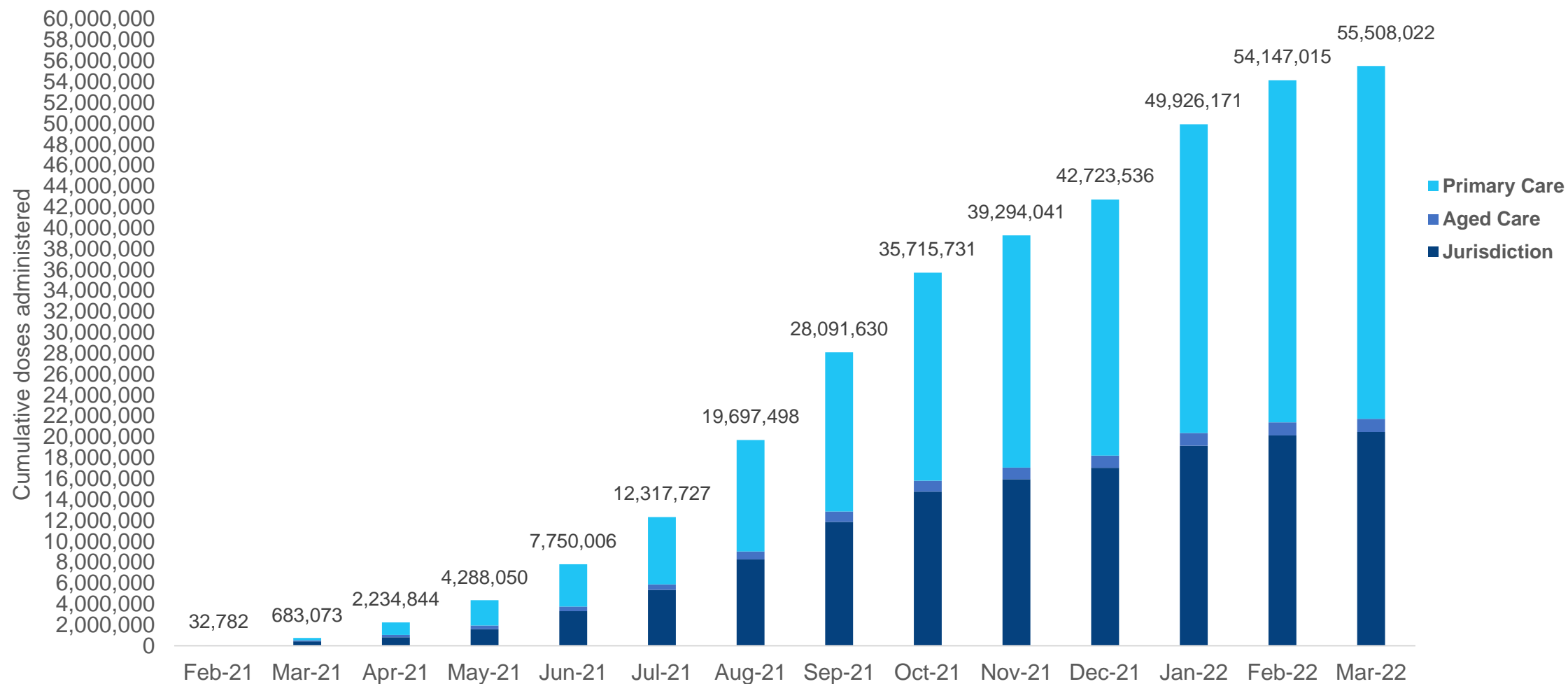
*Sourced from the Australian Immunisation Register. Numbers are calculated as difference in daily cumulative reported numbers to allow for historical corrections.

Source: Australian Immunisation Register

Cumulative doses administered by channel

Data as at:
17 Mar 2022

Australia's COVID-19
Vaccine Roadmap



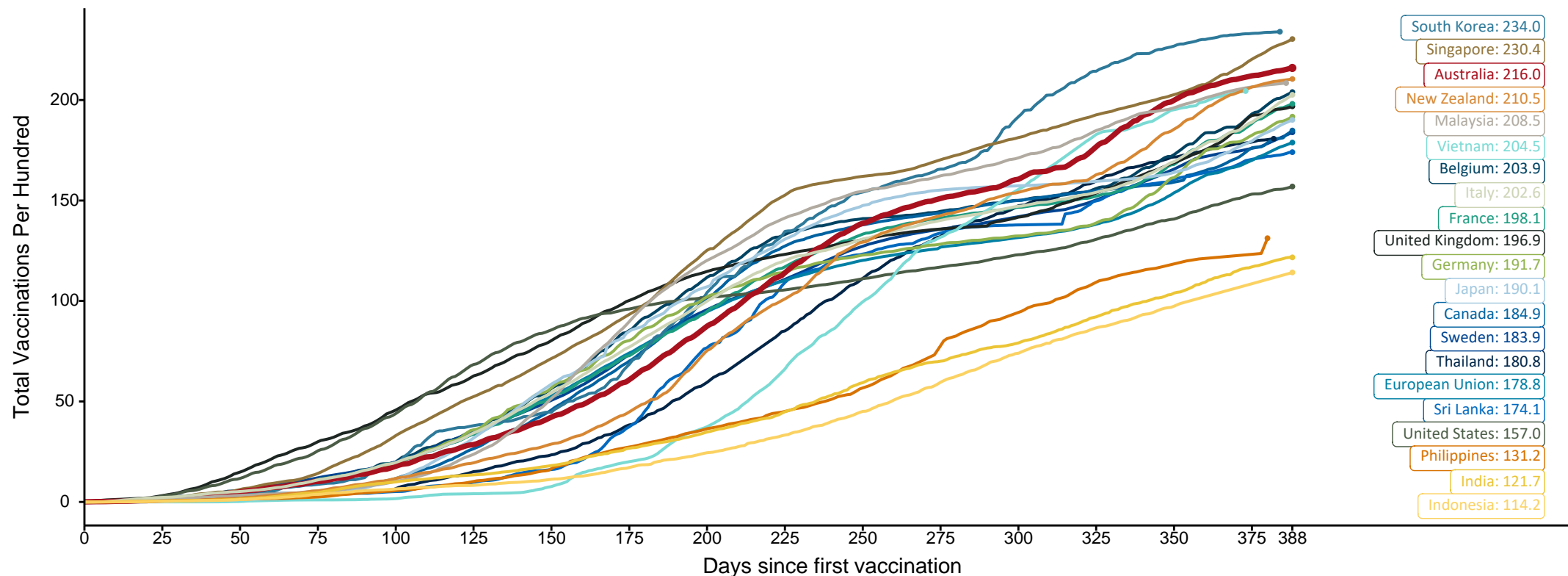
Source: Australian Immunisation Register

Doses at equivalent stages of rollout (Day 388)

Data as at:
17 Mar 2022

The x-axis is truncated at the length of Australia's vaccination program. Countries with intermittent reporting have had their doses per 100 imputed to Australia's current stage of rollout. Israel excluded as it is beyond scale of the graph

Cumulative doses administered (17 Mar): **55,508,022**



Note: From 11 January 2022, data for Australia includes all doses administered to people 5 and over. Prior to 11 January, data was for 12 and over.

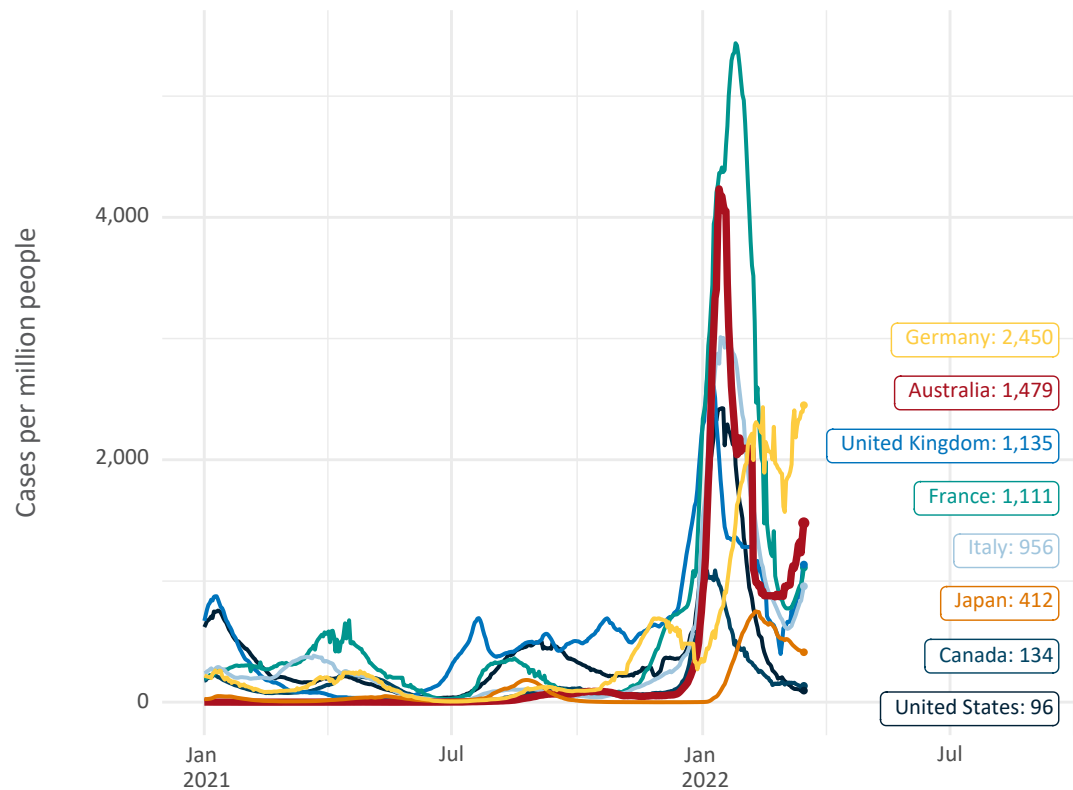
Source: Department of Health (Australia), Our World in Data (international)

Latest data: 17 March

International data – COVID-19

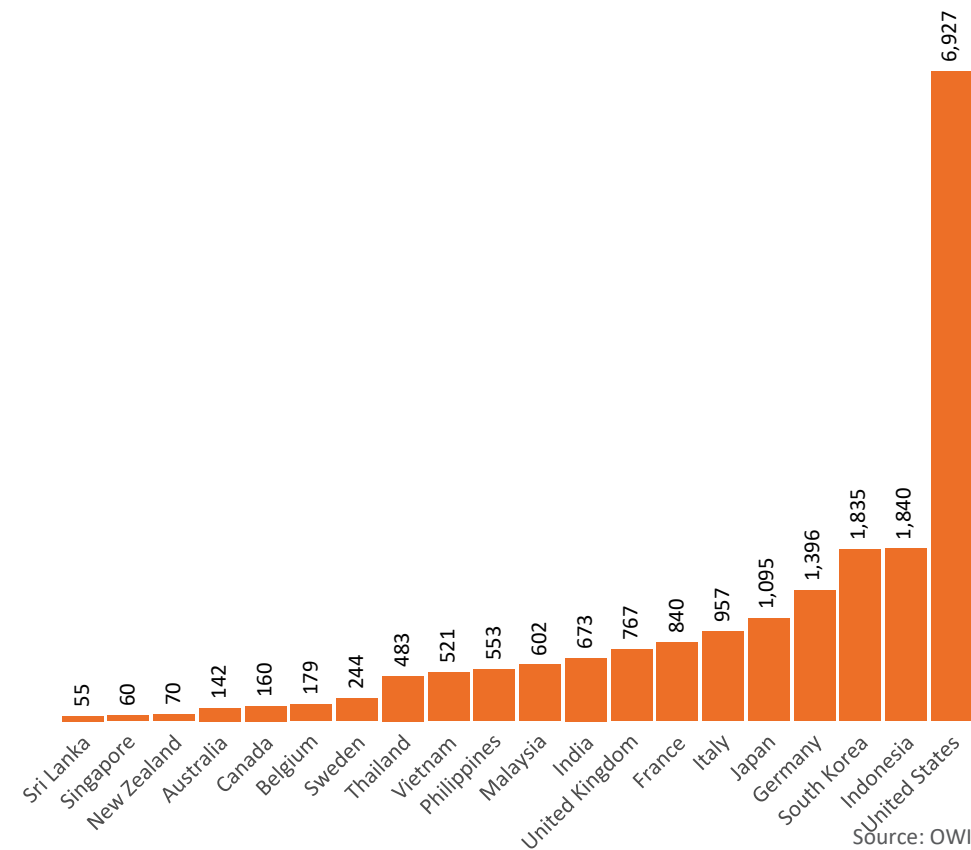
Data as at:
17 Mar 2022

New daily cases per million in 2021, Australia and G7 countries
Smoothed - 7 day average



Source: OWID
Data downloaded: 18 Mar 2022 08:10
Latest data: 16 Mar 2022

COVID-19 deaths in past 7 days - Australia and select countries



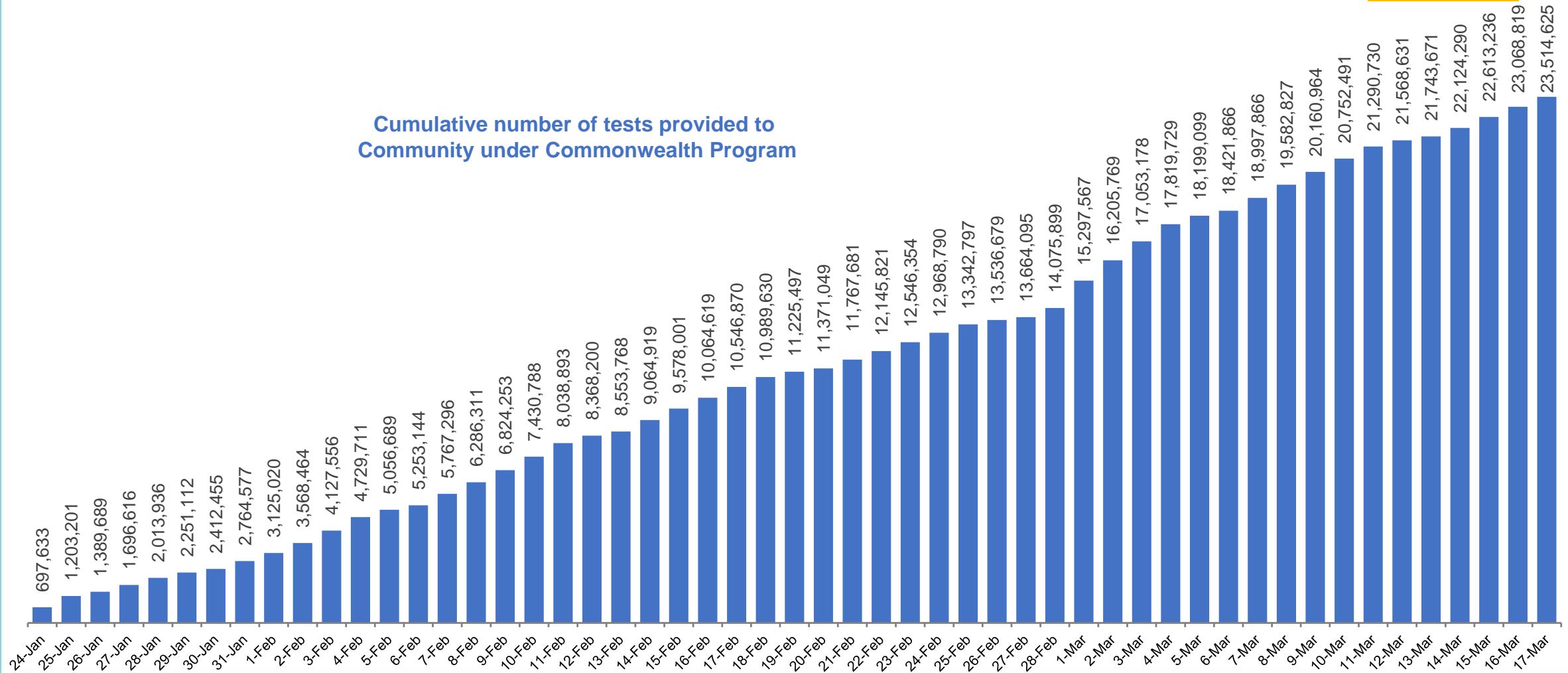
Source: OWID
Data downloaded: 18 Mar 2022 08:10
Latest data: 16 Mar 2022

Concessional rapid antigen test program

5,612 pharmacies have delivered over **23.5 million rapid antigen tests** to more than **3.8m eligible concession card holders** under the Government's concessional rapid antigen test program.

Data as at
18 Mar 2022

Cumulative number of tests provided to
Community under Commonwealth Program



Pandemic Response Payments

Australia's COVID-19
Vaccine Roadmap

Data as at midnight: 13 Mar 2022
Updated weekly



COVID Disaster Payment:	5.89 million claims received - 2.19 million individuals paid a total of \$12.59 billion.
\$200 Income Support Payment:	353,000 claims received - 183,000 individuals paid a total of \$268.9 million.
Pandemic Leave Disaster Payment:	1,350,000 claims received - 848,000 individuals paid a total of \$953.4 million.



COVID Disaster Payment

assisting during a lockdown
event in a Commonwealth
hotspot.

Income Support Payment \$200

for income support
recipients who lost at
least 8 hours of work.

Pandemic Leave Disaster Payment

for those who have to
self-isolate, quarantine
or care.

For more information visit:
servicesaustralia.gov.au

COVID-19 DISASTER PAYMENTS

Northern Territory

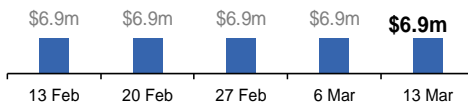
Lockdown (#3) from 16 Nov to 22 Nov
Claiming period ended 27 Dec

**7,500 people have received at least one
COVID Disaster Payment.**

\$6.9m paid out as at 13 Mar 2022.

**Nil paid in initial payments in the week
ending 13 Mar 2022.**

Cumulative payments made by Territory since
activation on 25 Aug 2021.



Victoria

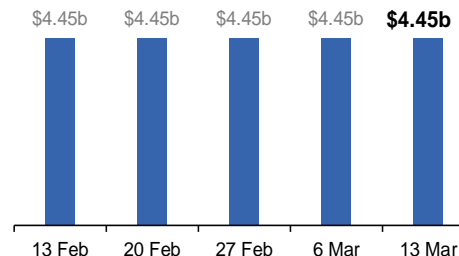
Lockdown (#6) from 6 Aug to 28 Oct
Claiming period ended 9 Dec

**745,000 people have received at least
one COVID Disaster Payment.**

\$4.45b paid out as at 13 Mar 2022.

**\$2,000 paid in initial and reoccurring
payments in the week ending
13 Mar 2022.**

Cumulative payments made by State since
activation on 8 Jun 2021.



New South Wales

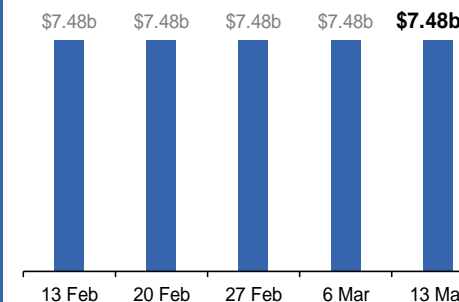
Lockdown from 24 Jun to 10 Oct
Claiming period ended 27 Nov

**1.08m people have received at least
one COVID Disaster Payment.**

\$7.48b paid out as at 13 Mar 2022.

**\$2,000 paid in initial and reoccurring
payments in the week ending
13 Mar 2022.**

Cumulative payments made by State since
activation on 1 Jul 2021.



Australian Capital Territory

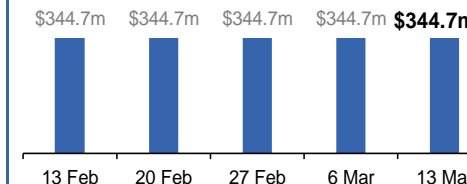
Lockdown from 12 Aug to 14 Oct
Claiming period ended 25 Nov

**65,000 people have received at least
one COVID Disaster Payment.**

\$344.7m paid out as at 13 Mar 2022.

**\$1,000 paid in initial and reoccurring
payments in the week ending
13 Mar 2022.**

Cumulative payments made by Territory since
activation on 20 Aug 2021.



Pandemic Response Payments (continued)

Data as at midnight: 13 Mar 2022
Updated weekly

COVID-19 DISASTER PAYMENTS

