



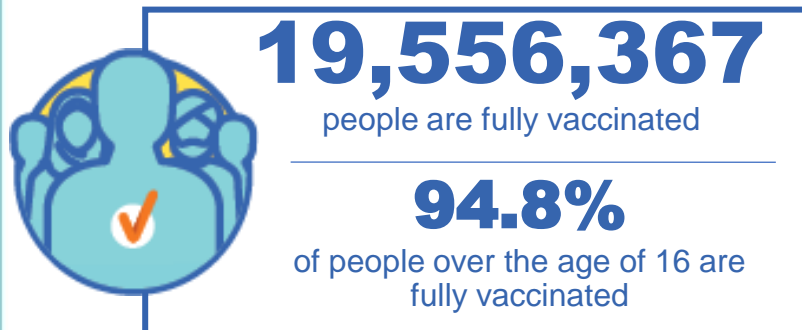
Australian Government
Operation COVID Shield

COVID-19 Vaccine Roll-out

17 March 2022

Data as at:
16 Mar 2022

Total vaccine doses



55,415,201 total vaccine doses administered nationally as at 16 March

+94,165 recorded in the last 24 hours

NSW
17,249,310
(+26,582 daily increase)

VIC
14,625,205
(+22,733 daily increase)

QLD
10,508,548
(+16,180 daily increase)

WA
6,024,151
(+13,914 daily increase)

TAS
1,237,866
(+2,370 daily increase)

SA
3,808,386
(+7,203 daily increase)

ACT
1,422,379
(+3,925 daily increase)

NT
539,356
(+1,258 daily increase)

*Administration state breakdown indicates state in which a vaccine was administered

**Overall dose count includes instances of more than two doses per person in a small number of cases.

Source: Australian Immunisation Register

Booster Vaccinations

Australia's COVID-19
Vaccine Roadmap

Data as at:
16 Mar 2022



176,335

Indigenous people who have
received more than two doses

49.5%

of eligible population (356,526)



160,489

Aged Care Residents who have
received more than two doses##

92.5%

of eligible population (173,525)



165,415

NDIS participants

19,986

NDIS residents

who have received more than two doses#

70.3%

of eligible population
(235,000)

85.4%

of eligible population
(23,000)



12,352,672 total people who
have received more than two doses nationally

+50,080 recorded in the last 24 hours

65.9% of people who are eligible (18,734,629)
have received more than two doses

NSW	People	% of Eligible
Cumulative	3,795,817	61.7%
Daily increase	14,146	

VIC	People	% of Eligible
Cumulative	3,356,129	67.1%
Daily increase	12,177	

QLD	People	% of Eligible
Cumulative	2,131,205	61.1%
Daily increase	8,443	

WA	People	% of Eligible
Cumulative	1,476,066	84.6%
Daily increase	8,142	

SA	People	% of Eligible
Cumulative	873,345	70.0%
Daily increase	3,478	

TAS	People	% of Eligible
Cumulative	275,329	68.0%
Daily increase	1,694	

ACT	People	% of Eligible
Cumulative	250,594	73.1%
Daily increase	806	

NT	People	% of Eligible
Cumulative	103,025	65.3%
Daily increase	613	

91,162

doses administered to persons
residing in other territories or with
missing residential information

*People may belong to multiple groups and could be represented in the above breakdowns multiple times.

Aged Care Residents data as at 16 March 2022.

NDIS participants data as at 15 March 2022.

Source: Australian Immunisation Register

Vaccinations by residential location

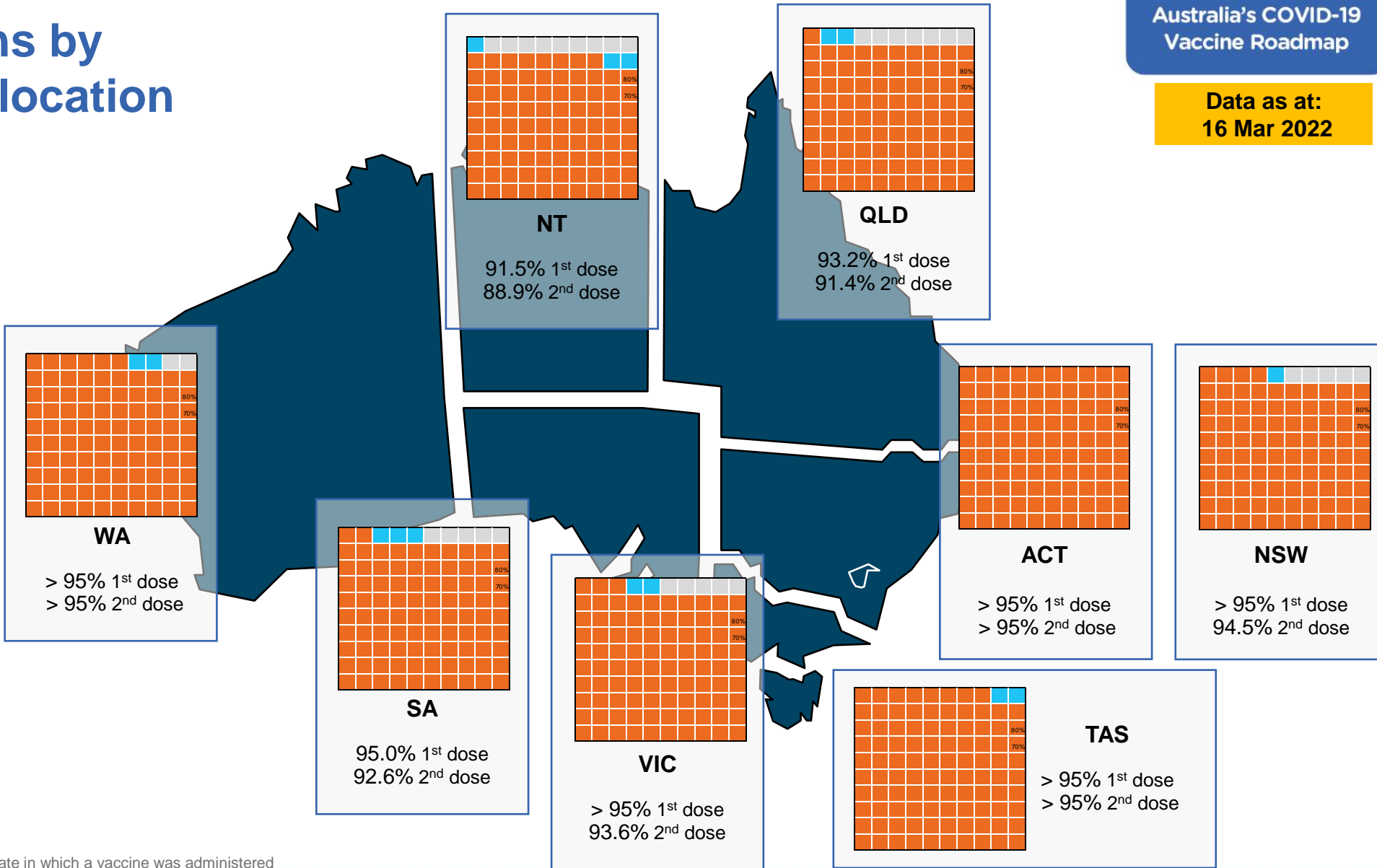
Data as at: 16 Mar 2022

First doses

Age	Today	4 weeks ago	8 weeks ago
16+	>95%	>95%	>95%
50+	>95%	>95%	>95%
70+	>95%	>95%	>95%

Fully vaccinated

Age	Today	4 weeks ago	8 weeks ago
16+	94.8%	94.3%	93.2%
50+	>95%	>95%	>95%
70+	>95%	>95%	>95%



*Residential state may differ from the state in which a vaccine was administered

Commonwealth and Jurisdiction vaccine doses administered

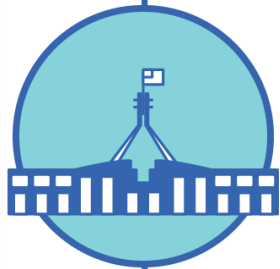
Data as at:
16 Mar 2022



55,415,201 total vaccine
doses administered nationally as at 16 March
+ 94,165 recorded in the last 24 hours



20,447,373
doses administered by state
and territory facilities
+ 22,057
recorded in the last 24 hours



34,967,828
doses administered by
commonwealth facilities
+ 72,108
recorded in the last 24 hours

33,707,509 total vaccine doses
administered in primary care settings
1,260,319 total vaccine doses
administered in aged care and disability
settings

NSW	Jurisdictions	Commonwealth
Cumulative	4,998,885	12,250,425
Daily increase	4,929	21,653

VIC	Jurisdictions	Commonwealth
Cumulative	5,912,310	8,712,895
Daily increase	4,768	17,965

QLD	Jurisdictions	Commonwealth
Cumulative	3,755,594	6,752,954
Daily increase	3,231	12,949

WA	Jurisdictions	Commonwealth
Cumulative	2,404,631	3,619,520
Daily increase	2,992	10,922

TAS	Jurisdictions	Commonwealth
Cumulative	597,623	640,243
Daily increase	590	1,780

SA	Jurisdictions	Commonwealth
Cumulative	1,733,458	2,074,928
Daily increase	2,418	4,785

ACT	Jurisdictions	Commonwealth
Cumulative	728,645	693,734
Daily increase	2,413	1,512

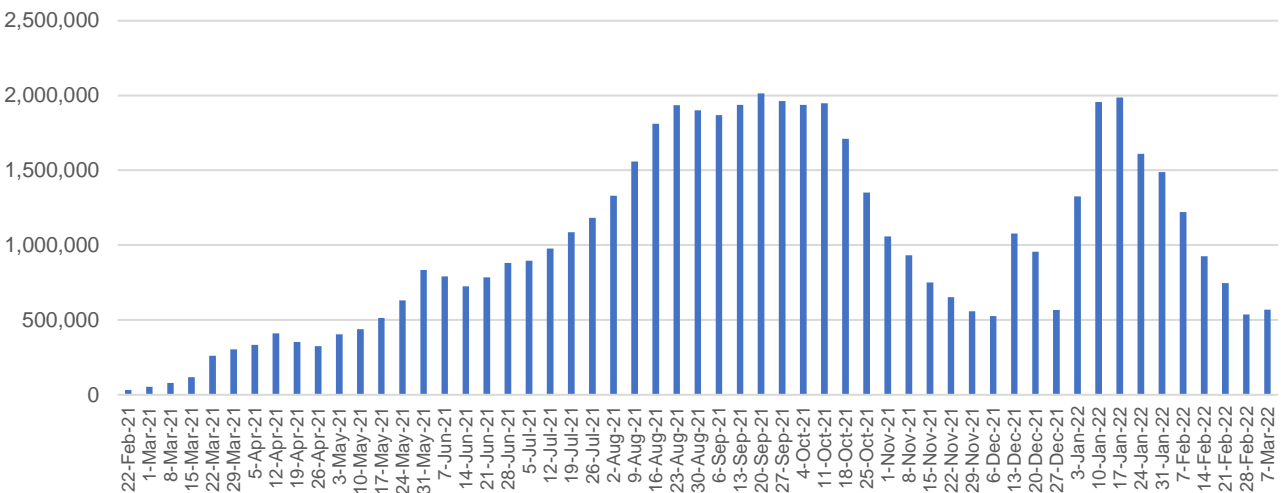
NT	Jurisdictions	Commonwealth
Cumulative	316,227	223,129
Daily increase	716	542

Vaccine milestone charts

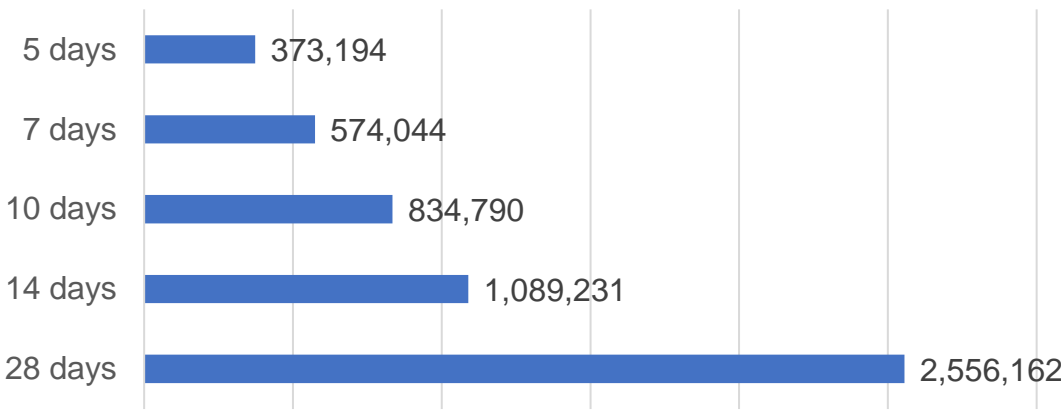
Data as at:
16 Mar 2022

Australia's COVID-19
Vaccine Roadmap

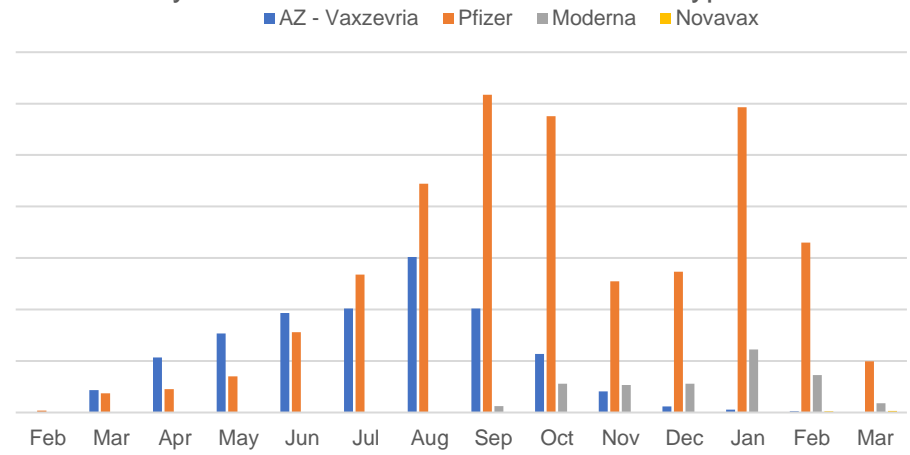
Doses Administered by Week



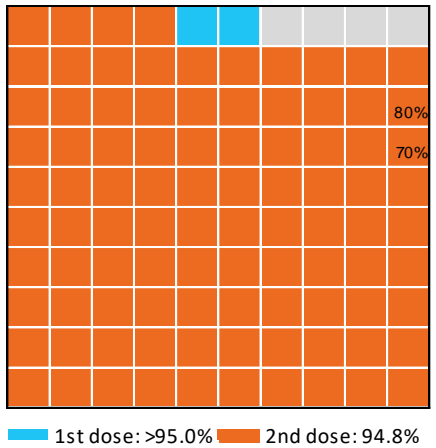
Doses Reported



Doses by administration month and vaccine type



Eligible population percentage coverage



*Each square represents 1% of the national population. Squares are filled as milestones are achieved.

*Sourced from the Australian Immunisation Register.

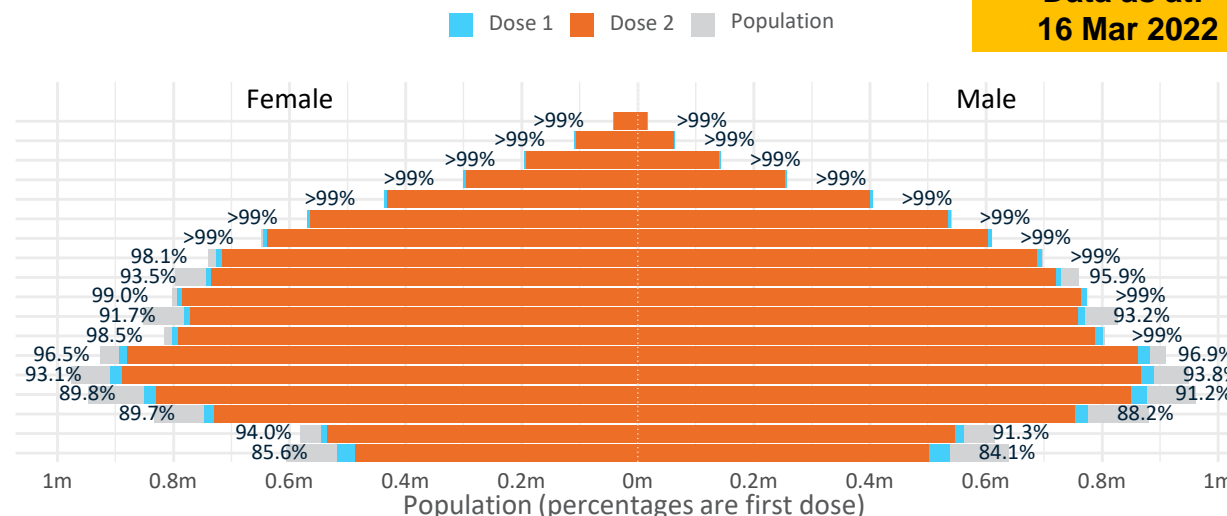
Doses by age and sex

First and second doses by age and sex

Australia's COVID-19
Vaccine Roadmap

Data as at:
16 Mar 2022

Age	Dose 1	Dose 2
95+	59,492 (>99%)	56,071 (>99%)
90-94	173,685 (>99%)	167,766 (>99%)
85-89	338,801 (>99%)	331,282 (>99%)
80-84	557,394 (>99%)	549,418 (>99%)
75-79	841,773 (>99%)	832,551 (>99%)
70-74	1,110,640 (>99%)	1,098,754 (>99%)
65-69	1,256,638 (>99%)	1,241,365 (98.7%)
60-64	1,422,808 (>99%)	1,405,223 (97.8%)
55-59	1,474,277 (94.8%)	1,456,126 (93.6%)
50-54	1,567,435 (>99%)	1,548,067 (98.9%)
45-49	1,551,472 (92.5%)	1,530,042 (91.3%)
40-44	1,606,669 (>99%)	1,579,375 (97.5%)
35-39	1,779,555 (97.0%)	1,744,064 (95.0%)
30-34	1,805,526 (93.9%)	1,760,522 (91.5%)
25-29	1,736,511 (91.1%)	1,686,716 (88.5%)
20-24	1,529,057 (89.3%)	1,487,621 (86.9%)
16-19	1,108,308 (92.7%)	1,081,404 (90.4%)
12-15	1,055,978 (84.9%)	987,829 (79.4%)

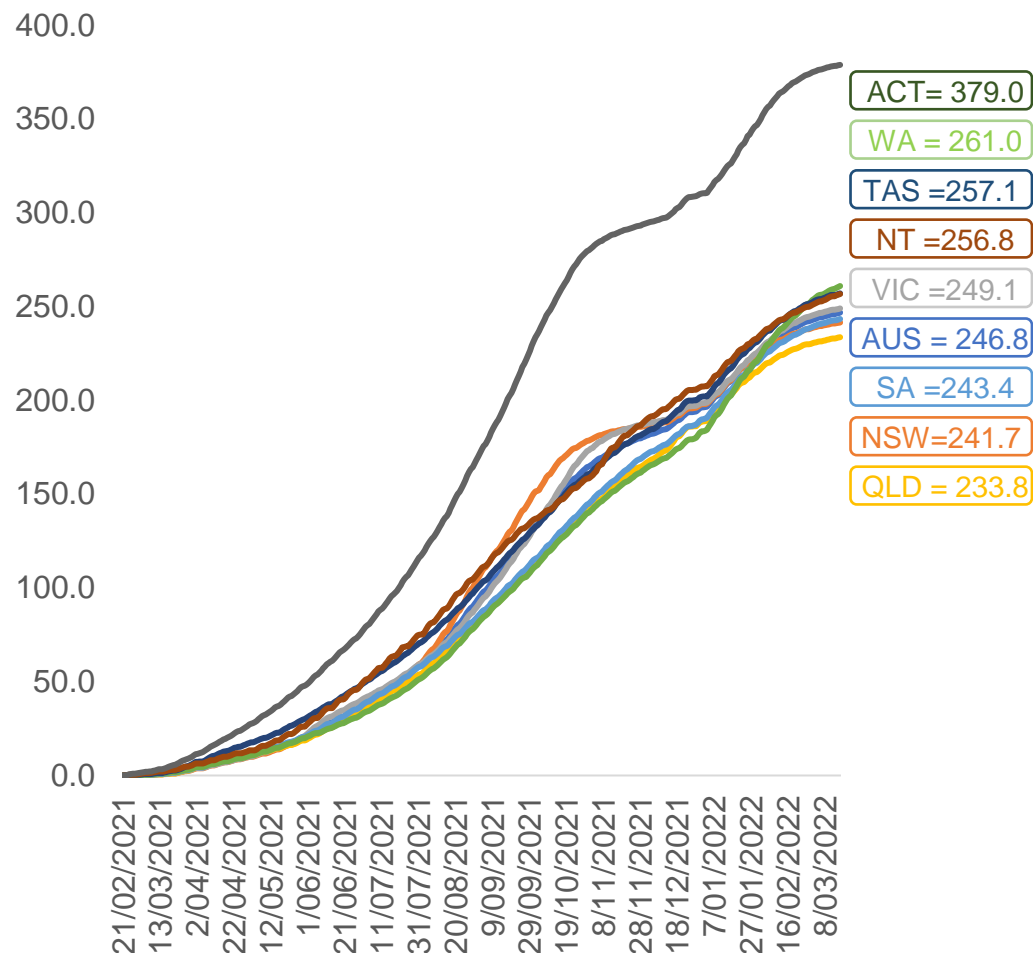


	AUS	ACT	NSW	NT	QLD	SA	TAS	VIC	WA
16 and over - dose 1	19,920,041	351,297	6,298,743	174,423	3,834,011	1,367,661	442,655	5,139,208	2,079,306
16 and over - dose 2	19,556,367	345,872	6,203,123	169,400	3,758,659	1,333,287	432,605	5,062,384	2,035,156
16 and over - population	20,619,959*	344,037	6,565,651	190,571	4,112,707	1,440,400	440,172	5,407,574	2,114,978
16 and over % with dose 1	96.61%	>99%	95.93%	91.53%	93.22%	94.95%	>99%	95.04%	98.31%
16 and over % with dose 2	94.84%	>99%	94.48%	88.89%	91.39%	92.56%	98.28%	93.62%	96.23%
5 to 11 - dose 1	1,170,658	31,480	348,331	12,925	206,078	82,997	28,192	320,269	133,275
5 to 11 - dose 2	273,401	9,674	89,664	2,556	52,710	17,675	9,294	67,808	22,849
5 to 11 - population	2,276,638	39,789	716,460	24,750	478,731	148,816	45,033	578,499	244,154
5 to 11 % with dose 1	51.42%	79.12%	48.62%	52.22%	43.05%	55.77%	62.60%	55.36%	54.59%
5 to 11 % with dose 2	12.01%	24.31%	12.51%	10.33%	11.01%	11.88%	20.64%	11.72%	9.36%
12 to 15 - dose 1	1,055,978	20,072	325,994	10,914	207,745	68,446	22,910	276,161	114,670
12 to 15 - dose 2	987,829	19,189	308,855	9,680	192,402	63,886	21,537	261,480	102,980
12 to 15 - population	1,243,990	19,693	390,330	13,060	270,146	82,747	26,308	308,611	132,869
12 to 15 % with dose 1	84.89%	>99%	83.52%	83.57%	76.90%	82.72%	87.08%	89.49%	86.30%
12 to 15 % with dose 2	79.41%	97.44%	79.13%	74.12%	71.22%	77.21%	81.86%	84.73%	77.50%

*National population will not equal sum of listed jurisdictions due to a small number of people counted in national population residing in some 'other' territories. Sum of state doses will not add to national total as some records are unable to be geocoded to a State or Territory.
Doses sourced from Australian Immunisation Register, population from ABS ERP June 2020

Vaccinations by location

Cumulative total doses administered vs eligible state populations*

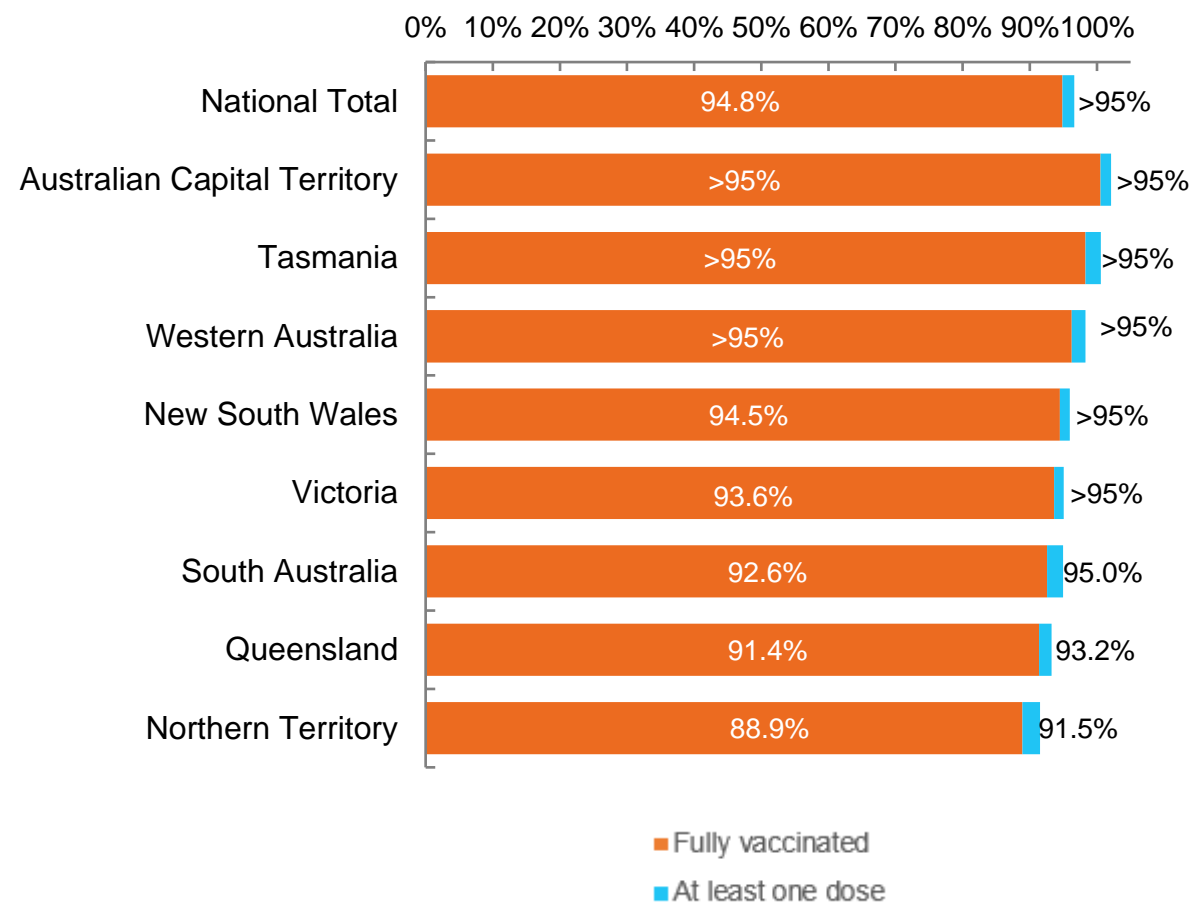


*Not an indication of percentage vaccinated, numbers will exceed 100 due to multiple doses required per person of the population. All doses are included for those aged 12 and above, and are based on vaccination provider location.

Data as at:
16 Mar 2022

Australia's COVID-19
Vaccine Roadmap

First and Second Doses by residential location



Aboriginal and Torres Strait Islander peoples

Number of people vaccinated

Data as at:
15 Mar 2022
Updated weekly

Australia's COVID-19
Vaccine Roadmap



434,708

people over the age of 16
have had at least one dose

83.8%

of people over the age of 16
have had at least one dose



411,587

people over the age of 16
are fully vaccinated

79.4%

of people over the age of 16 are
fully vaccinated



People aged 12 – 15 years

48,327

41,857

68.1%

At least one dose

59.0%

Fully vaccinated

177 Aboriginal community controlled health services (ACCHS)

0#

50

27

44

12

3

21

20

ACT

NSW

NT

QLD

SA

TAS

VIC

WA

Medicare Address State ^{##}	Individuals Dose 1	Individuals Dose 1 %	Individuals Dose 2	Individuals Dose 2 %
Australian Capital Territory	4,837	91.3%	4,713	88.9%
New South Wales	134,608	86.6%	131,283	84.5%
Northern Territory	42,154	89.1%	39,604	83.7%
Queensland	114,770	80.9%	108,282	76.3%
South Australia	19,708	79.3%	18,053	72.7%
Tasmania	13,965	88.4%	13,474	85.3%
Victoria	35,197	89.5%	34,308	87.3%
Western Australia	52,750	84.0%	47,087	75.0%
Unknown/Other Territories	16,719	64.7%	14,783	57.3%
Totals	434,708	83.8%	411,587	79.4%

Source: Australian Immunisation Register

*Identifying as Aboriginal and Torres Strait Islander is optional and the estimated population may be under reported.

**Includes all Aboriginal and Torres Strait Islander peoples who have received a vaccination, not limited to those administered in an ACCHS setting

#ACCHS in the ACT are currently operating as a Commonwealth Vaccine Clinics so not included to avoid double counting

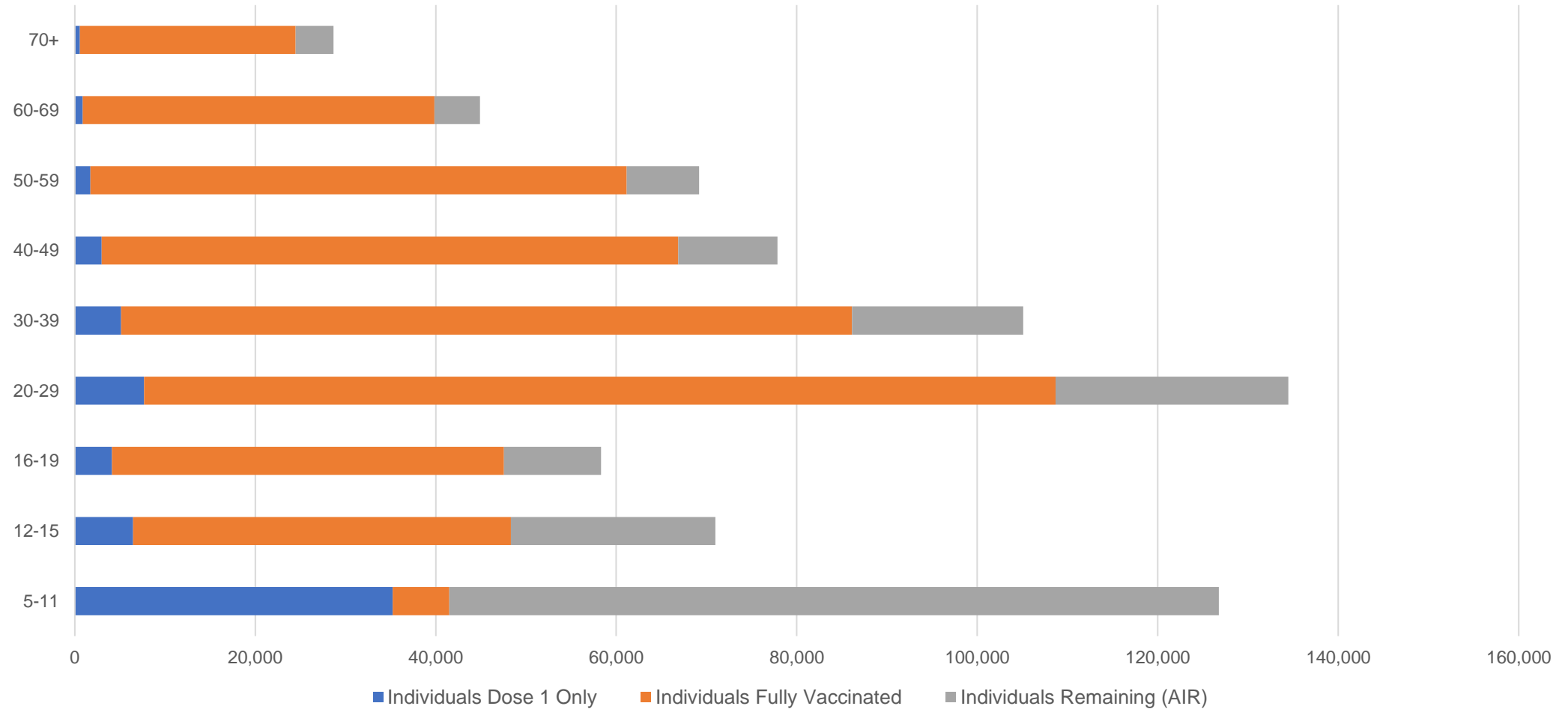
##The above table includes all identified Aboriginal and Torres Strait Islander people who are aged 16 and above by their state of residence.

Aboriginal and Torres Strait Islander peoples

Number of people vaccinated by age

Data as at:
15 Mar 2022
Updated weekly

Australia's COVID-19
Vaccine Roadmap



Source: Australian Immunisation Register

Commonwealth primary care

Data as at:
16 Mar 2022

Australia's COVID-19
Vaccine Roadmap



Primary care vaccine administration sites

5,788	128	177	3,585
GPs	CVCs	ACCHS	Pharmacies



33,707,509 total vaccine doses administered
primary care settings as at 16 March
+ 71,600 recorded in the last 24 hours

Primary care vaccinations by provider type

	Doses administered	Daily increase	7 day increase
General Practice* includes other Commonwealth	27,377,673	47,917	273,993
Pharmacy	6,329,836	23,683	141,474

NSW
11,707,534
(+21,354 daily increase)

VIC
8,409,340
(+17,768 daily increase)

QLD
6,482,716
(+12,996 daily increase)

WA
3,494,393
(+10,671 daily increase)

TAS
621,031
(+1,761 daily increase)

SA
1,998,789
(+4,719 daily increase)

ACT
531,397
(+1,282 daily increase)

NT
202,418
(+497 daily increase)

259,891

doses administered to persons
residing in other territories or with
missing residential information

*General practice includes Commonwealth Vaccination Clinics, Aboriginal Community Health Centres, Royal Flying Doctor Service and other Commonwealth vaccination facilities

Source: Australian Immunisation Register

Data as at:
16 Mar 2022

Commonwealth aged care and disability doses administered



1,260,319 (+ 508 last 24 hours)

Total vaccine doses administered in aged care and disability facilities as at 16 March

Number of doses administered as part of the Commonwealth aged and disability care rollout

NSW
557,703
(+89 daily increase)

VIC
234,837
(+26 daily increase)

QLD
199,285
(+172 daily increase)

WA
104,568
(+156 daily increase)

TAS
22,445
(+3 daily increase)

SA
83,913
(+1 daily increase)

ACT
16,529
(+20 daily increase)

NT
7,402
(-2[#] daily increase)

33,637

doses administered to persons residing in other territories or with missing residential information

Source: Australian Immunisation Register

*Sourced from the Australian Immunisation Register. Includes all persons vaccinated at participating residential aged care, disability and related industry settings.

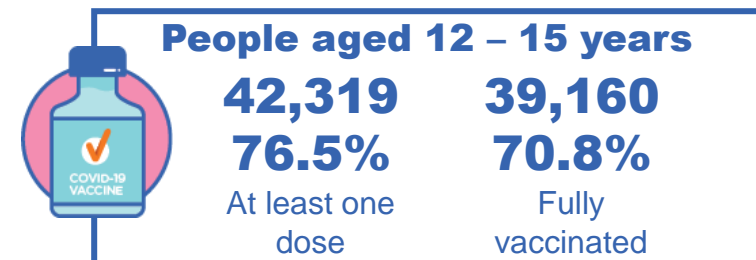
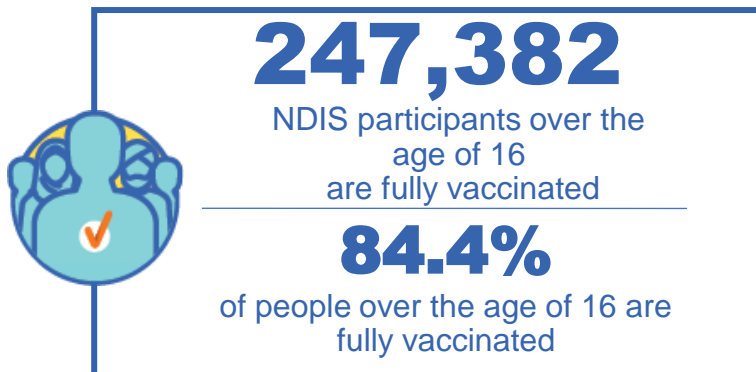
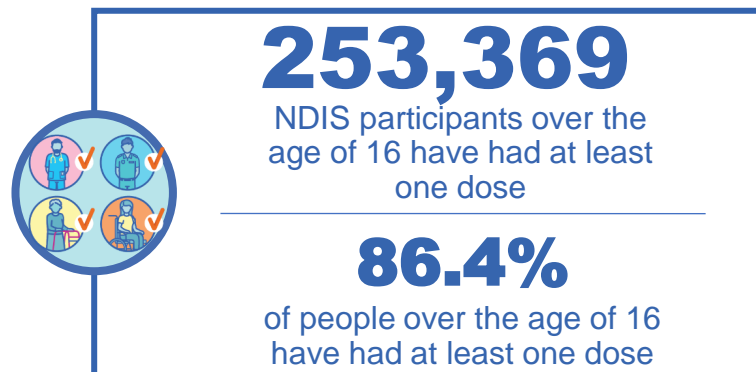
**State level breakdown indicates the residential location and may not align to the state in which the vaccination occurred.

Numbers are calculated as difference in daily cumulative reported numbers to allow for historical corrections in all data sources. This can occasionally result in negative numbers, such as for NT, where historical details about doses have been updated

National Disability Insurance Scheme (NDIS) reported vaccinations

Data as at:
10 March 2022
Updated weekly

Australia's COVID-19
Vaccine Roadmap



NDIS participant vaccinations

	People aged 16+ with at least one dose	People aged 16+ fully vaccinated	% People aged 16+ with at least one dose	% People aged 16+ fully vaccinated
ACT	4,815	4,744	88.8%	87.5%
NSW	78,108	76,761	87.1%	85.6%
NT	2,200	2,106	77.1%	73.8%
QLD	49,751	48,519	84.6%	82.5%
SA	20,615	19,943	84.0%	81.3%
TAS	6,345	6,147	86.3%	83.6%
VIC	67,537	66,176	87.7%	85.9%
WA	23,998	22,986	87.2%	83.5%
National	253,369	247,382	86.4%	84.4%

Source: Linkage between National Disability Insurance Agency data and the Australian Immunisation Register. Total NDIS participant numbers as at 28th February. Australian Immunisation Register data as at 9 March. Includes all participants regardless of residence type.

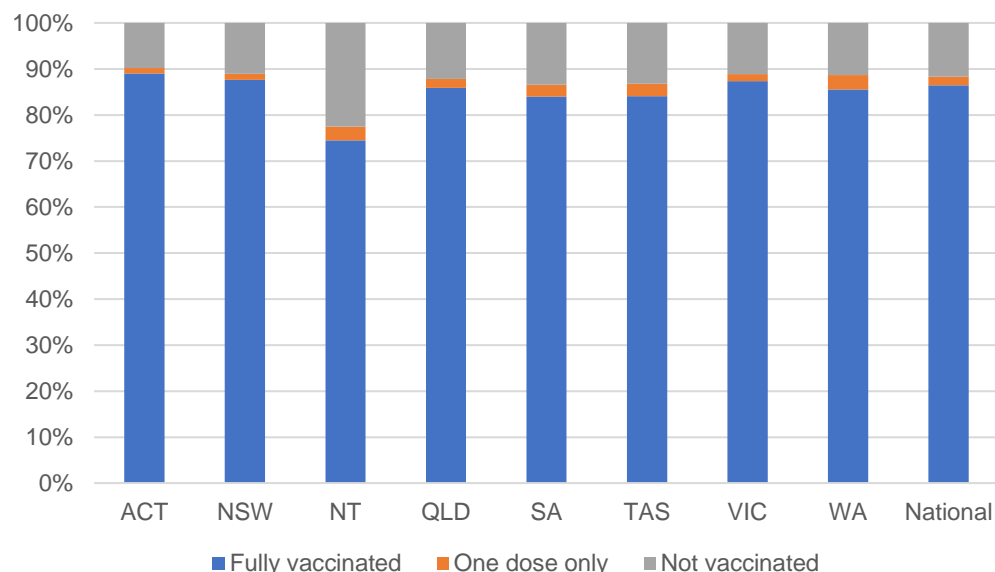
National Disability Insurance Scheme (NDIS) reported vaccinations

Data as at:
10 March 2022
Updated Weekly

Australia's COVID-19
Vaccine Roadmap

NATIONAL	Total people with at least one dose	People fully vaccinated	Total number of individuals in cohort	% People with at least one dose	% People fully vaccinated
NDIS participants living in disability accommodation	20,598	20,191	23,352	88.2%	86.5%

NDIS participants in disability and aged care accommodation



Source: Linkage between National Disability Insurance Agency data and the Australian Immunisation Register. Includes participants residing in disability accommodation only.

Source: Total NDIS participant numbers as at 28th February. Participant data as at 9 March. Australian Immunisation Register data as at 9 March. Worker data as at 10 March.

NDIS workforce vaccinations

	NDIS workers with at least one dose	NDIS workers fully vaccinated	% NDIS workers with at least one dose	% NDIS workers fully vaccinated
NSW	120,178	117,760	97.9%	96.0%
VIC	116,128	108,193	98.2%	91.5%
QLD	68,810	67,813	97.3%	95.9%
WA	32,680	30,259	98.4%	91.1%
SA	35,209	32,003	98.1%	89.1%
TAS	10,778	10,476	99.6%	96.8%
ACT	3,550	3,519	99.6%	98.8%
NT	3,481	3,288	99.7%	94.1%
TOTAL	390,814	373,311	98.0%	93.6%

Source: the NDIS Commission has established a requirement for registered NDIS providers who provide intensive disability support services to report on the vaccination status of workers they employ, or otherwise engage, to deliver NDIS-funded supports and services, and who are required to be vaccinated in accordance with in-force state and territory public health orders. The statistics reflect data reported to the NDIS Commission by registered NDIS providers and should be considered indicative and subject to change

Note: Some registered NDIS providers are yet to report on the vaccination status of their workforce. The NDIS Commission is working with those providers around reporting requirements.

Remaining workers not included include those exempt from vaccination requirements, workers whose vaccination status is not yet verified by the provider (such as workers on leave) and provider reporting anomalies.

Residential aged care vaccination rollout

Australia's COVID-19
Vaccine Roadmap

Data as at:
10 Mar 2022
Updated weekly

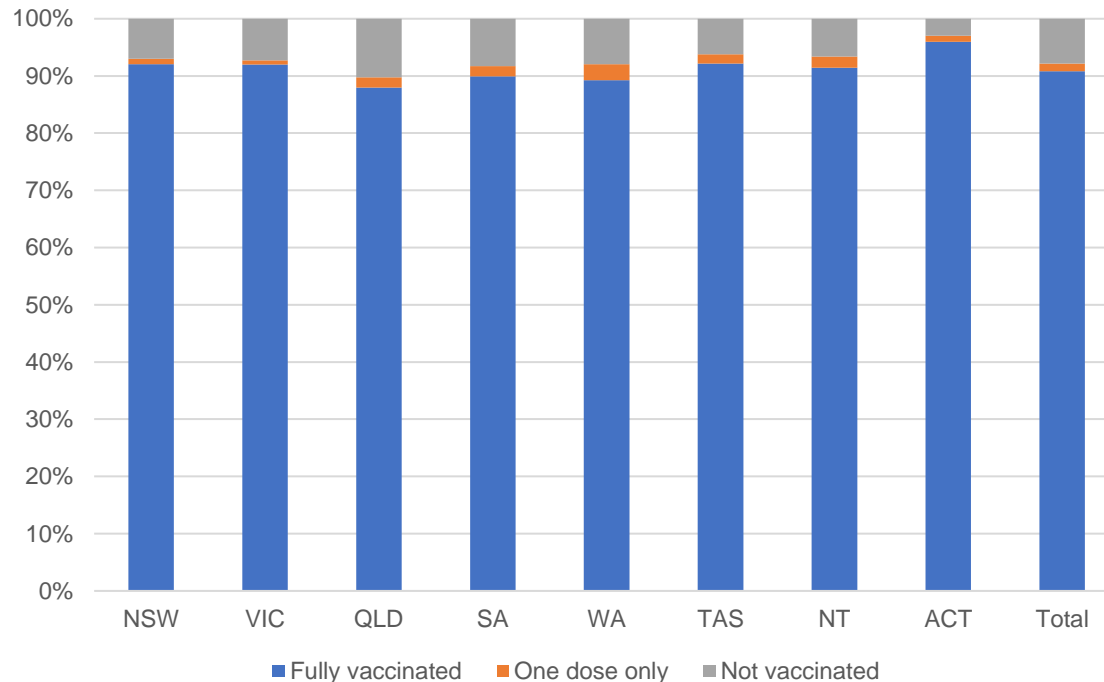
Residential aged care facilities status

100%
Commonwealth facilities
visited (2,537 planned sites)

173,652
People fully vaccinated

176,173
People with at least
one dose

Aged care resident vaccinations



Aged care worker vaccinations

Jurisdictions	Total workers with at least one dose	Workers fully vaccinated	% Workers with at least one dose	% Workers fully vaccinated
NSW	78,694	78,682	98.4%	98.4%
VIC	68,396	68,395	98.1%	98.1%
QLD	48,200	48,198	98.0%	98.0%
SA	26,738	26,714	98.8%	98.7%
WA	23,879	23,877	99.7%	99.7%
TAS	7,799	7,799	99.9%	99.9%
NT	870	870	99.9%	99.9%
ACT	3,063	3,063	100.0%	100.0%
Total	257,639	257,598	98.5%	98.5%

Source: My Aged Care Portal vaccination progress

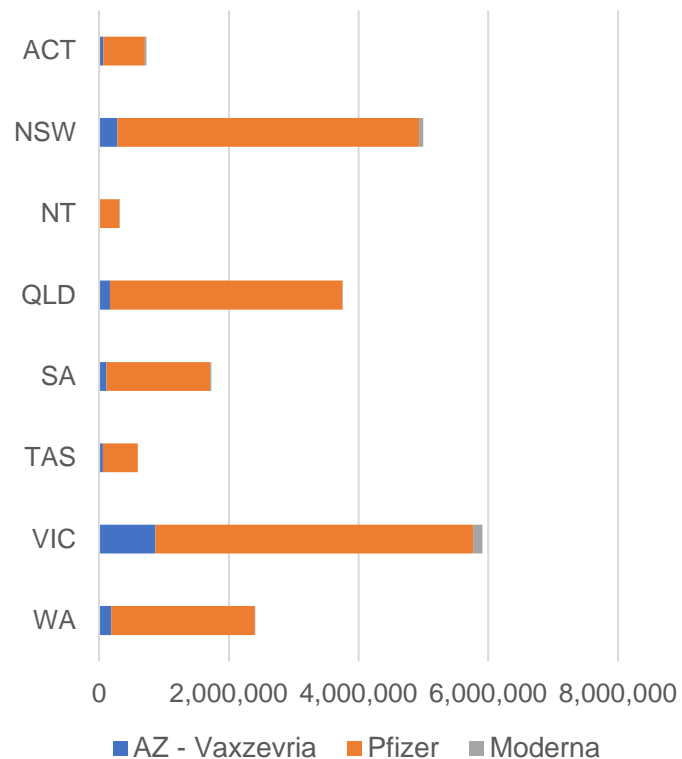
*Status updates are provided by facilities at least once per week. Reporting is updated Monday to Friday to encompass different facility updates being made on different days.

Data is sourced directly from Aged Care Service Providers and is not drawn or closely aligned with data from AIR due to inconsistencies and potential lags in uploading of records.

Data as at:
16 Mar 2022

Jurisdiction administered

Total vaccine doses administered in State and Territory clinics as at 16 March



20,447,373 total vaccine doses administered
in State and Territory clinics as at 16 March
+ **22,057** recorded in the last 24 hours
+ **155,039** recorded in the last 7 days

NSW
4,998,885
(+4,929 daily
increase)

VIC
5,912,310
(+4,768 daily
increase)

QLD
3,755,594
(+3,231 daily
increase)

WA
2,404,631
(+2,992 daily
increase)

TAS
597,623
(+590 daily
increase)

SA
1,733,458
(+2,418 daily
increase)

ACT
728,645
(+2,413 daily
increase)

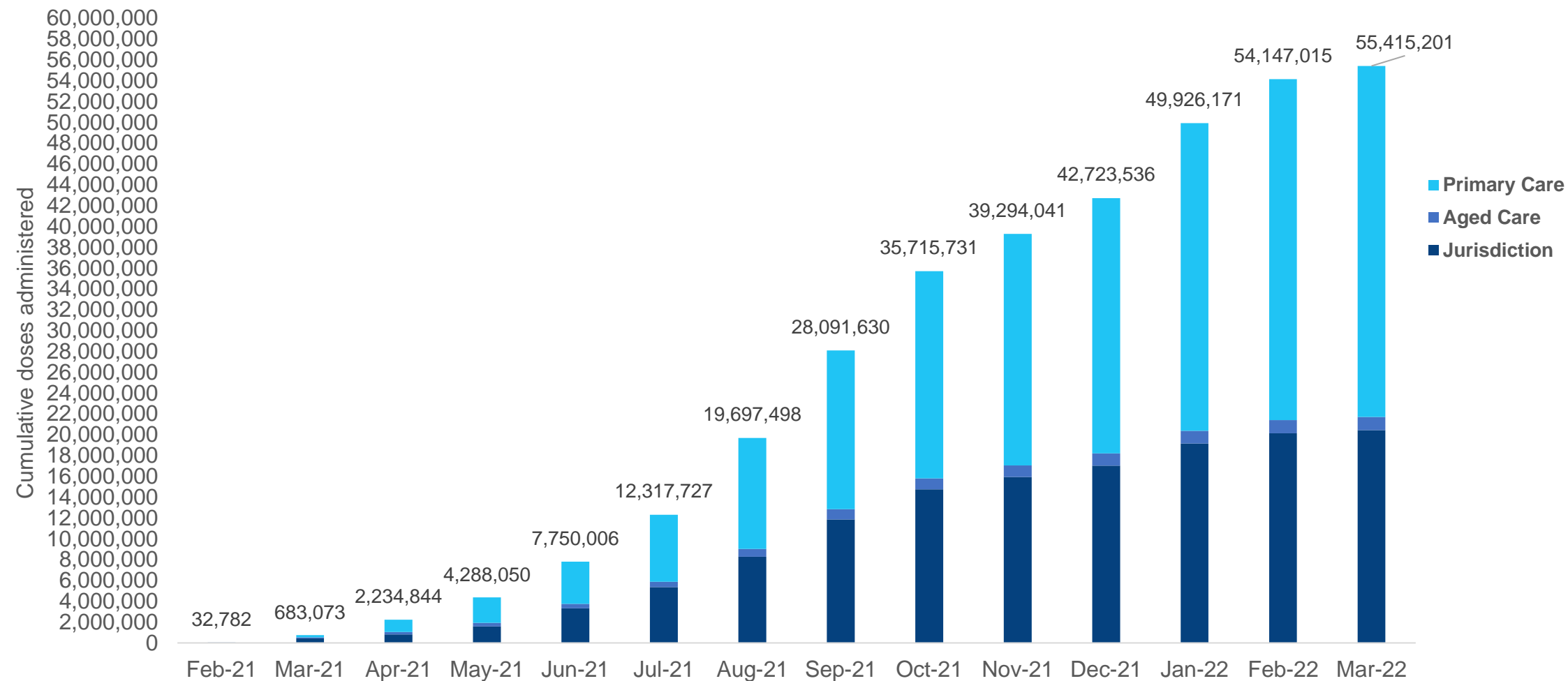
NT
316,227
(+716 daily
increase)

*Sourced from the Australian Immunisation Register. Numbers are calculated as difference in daily cumulative reported numbers to allow for historical corrections.

Source: Australian Immunisation Register

Cumulative doses administered by channel

Data as at:
16 Mar 2022



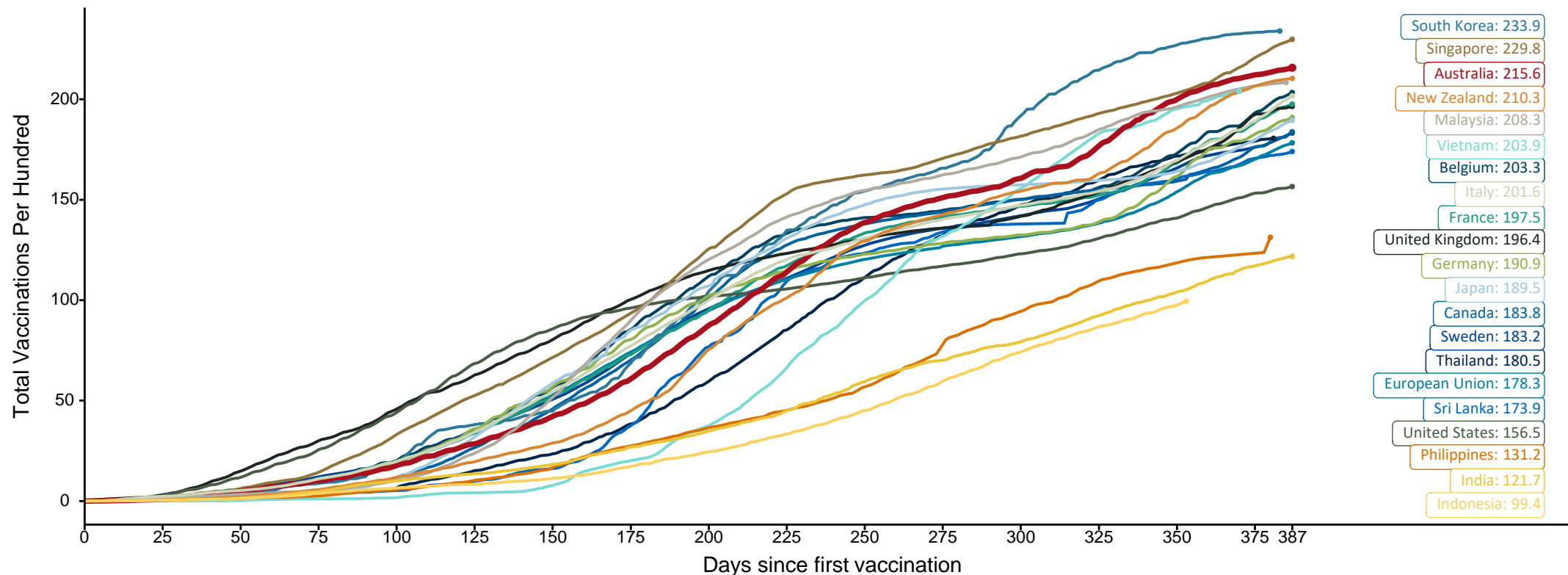
Source: Australian Immunisation Register

Doses at equivalent stages of rollout (Day 387)

Data as at:
16 Mar 2022

The x-axis is truncated at the length of Australia's vaccination program. Countries with intermittent reporting have had their doses per 100 imputed to Australia's current stage of rollout. Israel excluded as it is beyond scale of the graph

Cumulative doses administered (16 Mar): **55,415,201**



Note: From 11 January 2022, data for Australia includes all doses administered to people 5 and over. Prior to 11 January, data was for 12 and over.

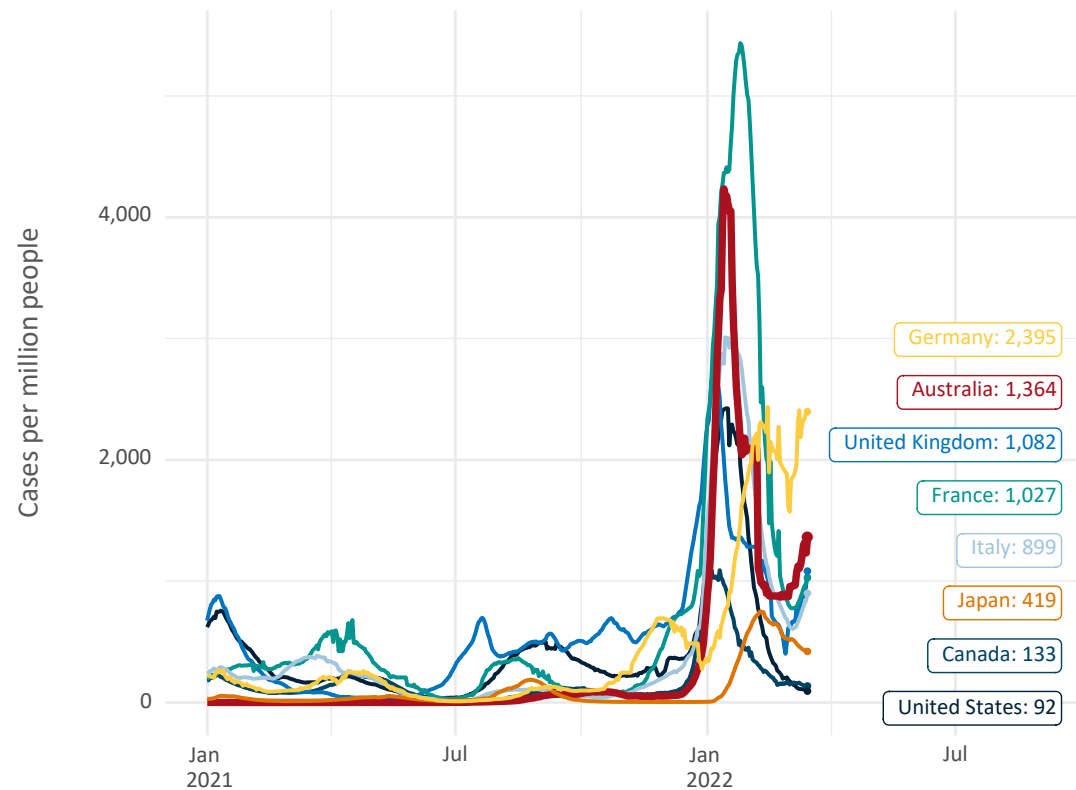
Source: Department of Health (Australia), Our World in Data (international)

Latest data: 16 March

International data – COVID-19

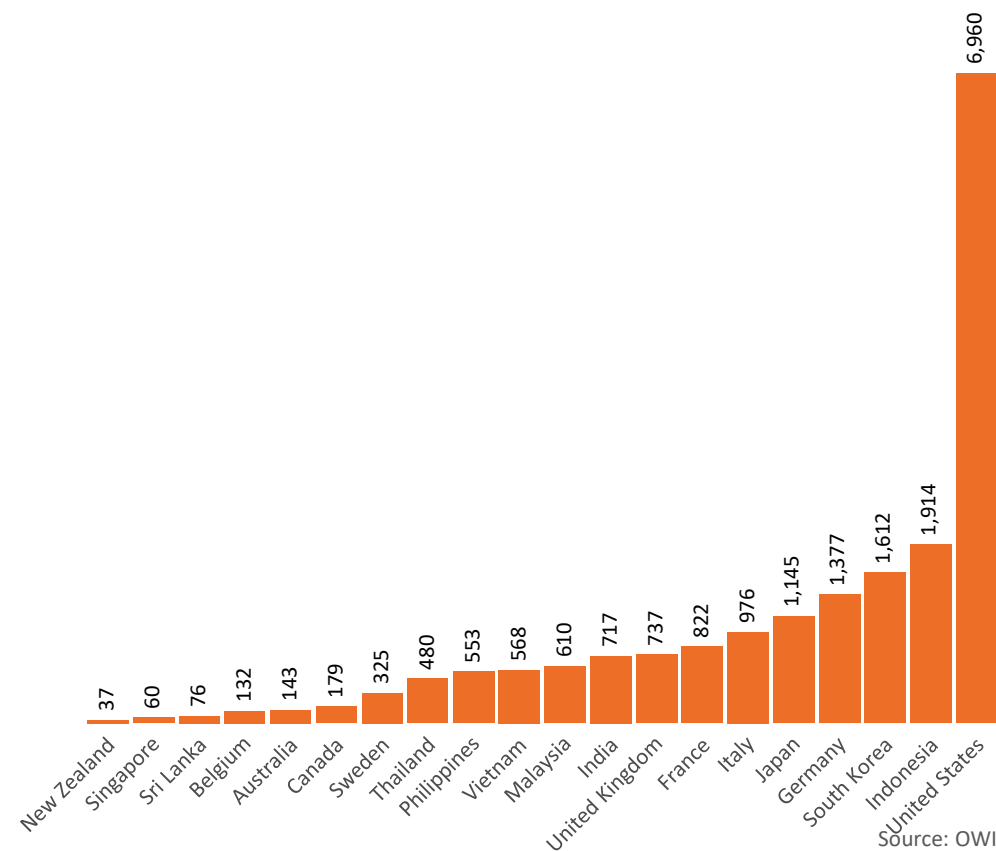
Data as at:
16 Mar 2022

New daily cases per million in 2021, Australia and G7 countries
Smoothed - 7 day average



Source: OWID
Data downloaded: 17 Mar 2022 07:46
Latest data: 15 Mar 2022

COVID-19 deaths in past 7 days - Australia and select countries



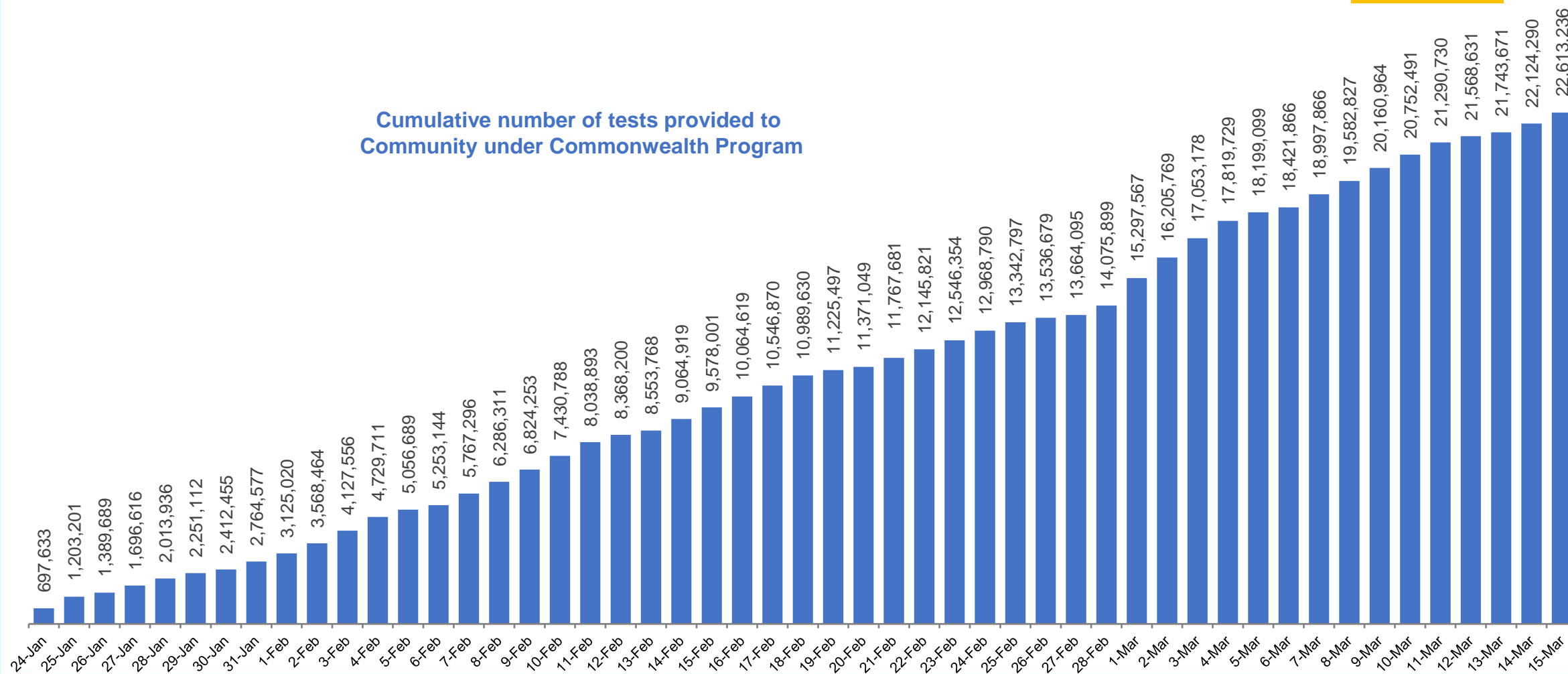
Source: OWID
Data downloaded: 17 Mar 2022 07:47
Latest data: 15 Mar 2022

Concessional rapid antigen test program

5,607 pharmacies have delivered over **22.6 million rapid antigen tests** to more than **3.7m eligible concession card holders** under the Government's concessional rapid antigen test program.

**Data as at:
16 Mar 2022**

Cumulative number of tests provided to
Community under Commonwealth Program



Pandemic Response Payments

Australia's COVID-19
Vaccine Roadmap

Data as at midnight: 13 Mar 2022
Updated weekly



COVID Disaster Payment:	5.89 million claims received - 2.19 million individuals paid a total of \$12.59 billion.
\$200 Income Support Payment:	353,000 claims received - 183,000 individuals paid a total of \$268.9 million.
Pandemic Leave Disaster Payment:	1,350,000 claims received - 848,000 individuals paid a total of \$953.4 million.



COVID Disaster Payment

assisting during a lockdown
event in a Commonwealth
hotspot.

Income Support Payment \$200

for income support
recipients who lost at
least 8 hours of work.

Pandemic Leave Disaster Payment

for those who have to
self-isolate, quarantine
or care.

For more information visit:
servicesaustralia.gov.au

COVID-19 DISASTER PAYMENTS

Northern Territory

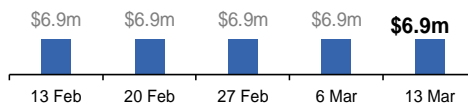
Lockdown (#3) from 16 Nov to 22 Nov
Claiming period ended 27 Dec

**7,500 people have received at least one
COVID Disaster Payment.**

\$6.9m paid out as at 13 Mar 2022.

**Nil paid in initial payments in the week
ending 13 Mar 2022.**

Cumulative payments made by Territory since
activation on 25 Aug 2021.



Victoria

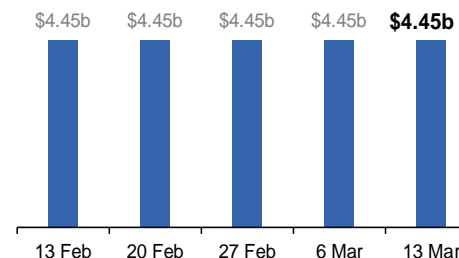
Lockdown (#6) from 6 Aug to 28 Oct
Claiming period ended 9 Dec

**745,000 people have received at least
one COVID Disaster Payment.**

\$4.45b paid out as at 13 Mar 2022.

**\$2,000 paid in initial and reoccurring
payments in the week ending
13 Mar 2022.**

Cumulative payments made by State since
activation on 8 Jun 2021.



New South Wales

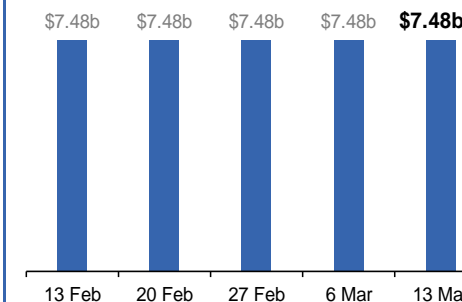
Lockdown from 24 Jun to 10 Oct
Claiming period ended 27 Nov

**1.08m people have received at least
one COVID Disaster Payment.**

\$7.48b paid out as at 13 Mar 2022.

**\$2,000 paid in initial and reoccurring
payments in the week ending
13 Mar 2022.**

Cumulative payments made by State since
activation on 1 Jul 2021.



Australian Capital Territory

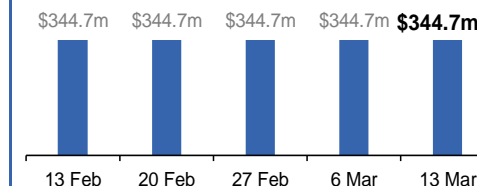
Lockdown from 12 Aug to 14 Oct
Claiming period ended 25 Nov

**65,000 people have received at least
one COVID Disaster Payment.**

\$344.7m paid out as at 13 Mar 2022.

**\$1,000 paid in initial and reoccurring
payments in the week ending
13 Mar 2022.**

Cumulative payments made by Territory since
activation on 20 Aug 2021.



Pandemic Response Payments (continued)

Data as at midnight: 13 Mar 2022
Updated weekly

COVID-19 DISASTER PAYMENTS

