



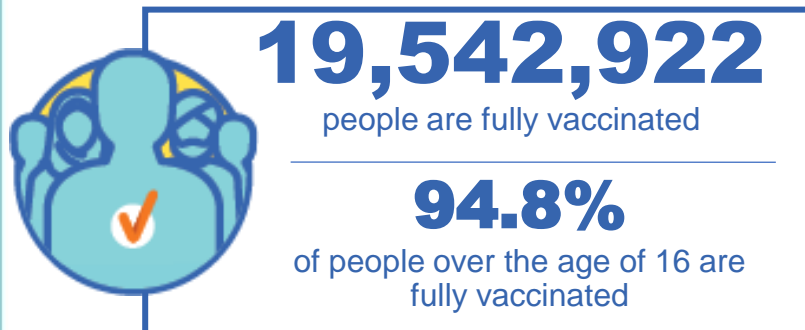
Australian Government
Operation COVID Shield

COVID-19 Vaccine Roll-out

15 March 2022

Data as at:
14 Mar 2022

Total vaccine doses



55,223,539 total vaccine doses administered nationally as at 14 March

+74,424 recorded in the last 24 hours



*Administration state breakdown indicates state in which a vaccine was administered

**Overall dose count includes instances of more than two doses per person in a small number of cases.

Source: Australian Immunisation Register

Booster Vaccinations

Australia's COVID-19
Vaccine Roadmap

Data as at:
14 Mar 2022



12,249,384 total people who
have received more than two doses nationally
+39,418 recorded in the last 24 hours
65.7% of people who are eligible (18,652,400)
have received more than two doses

NSW	People	% of Eligible
Cumulative	3,767,434	61.3%
Daily increase	14,881	

VIC	People	% of Eligible
Cumulative	3,330,008	66.6%
Daily increase	4,412	

QLD	People	% of Eligible
Cumulative	2,113,915	61.3%
Daily increase	7,683	

WA	People	% of Eligible
Cumulative	1,459,046	84.4%
Daily increase	10,065	

SA	People	% of Eligible
Cumulative	865,914	70.0%
Daily increase	870	

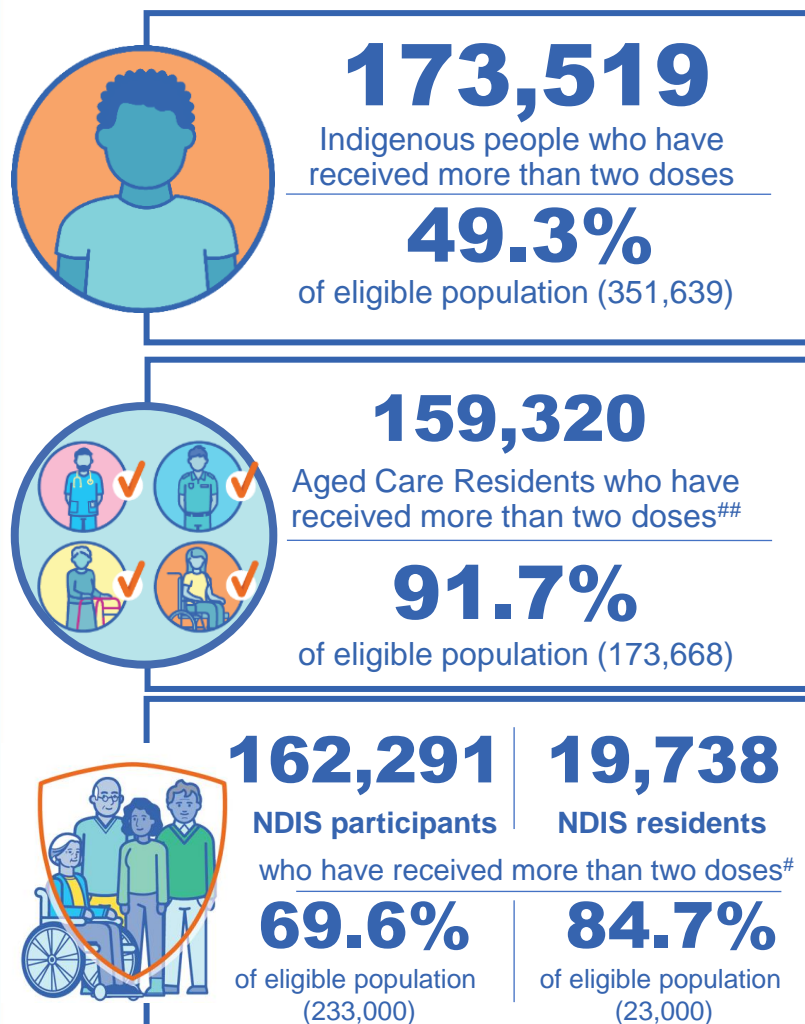
TAS	People	% of Eligible
Cumulative	272,328	67.6%
Daily increase	241	

ACT	People	% of Eligible
Cumulative	249,069	72.7%
Daily increase	285	

NT	People	% of Eligible
Cumulative	101,701	65.0%
Daily increase	631	

89,969

doses administered to persons
residing in other territories or with
missing residential information



*People may belong to multiple groups and could be represented in the above breakdowns multiple times.

NDIS participants data as at 10 March 2022.

Aged Care Residents data as at 14 March 2022.

Source: Australian Immunisation Register

Vaccinations by residential location

Australia's COVID-19 Vaccine Roadmap

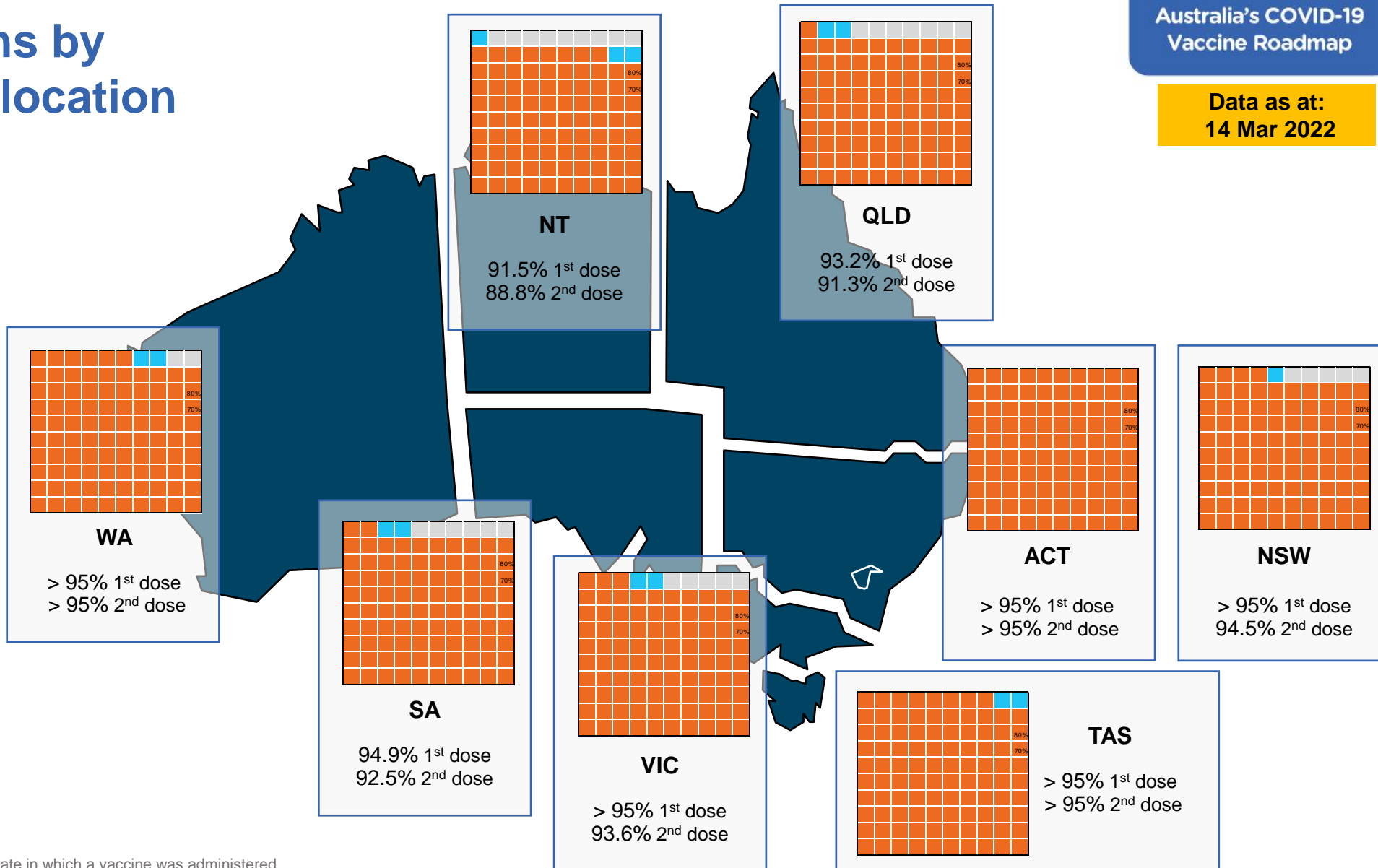
Data as at:
14 Mar 2022

First doses

Age	Today	4 weeks ago	8 weeks ago
16+	>95%	>95%	>95%
50+	>95%	>95%	>95%
70+	>95%	>95%	>95%

Fully vaccinated

Age	Today	4 weeks ago	8 weeks ago
16+	94.8%	94.3%	93.1%
50+	>95%	>95%	>95%
70+	>95%	>95%	>95%



*Residential state may differ from the state in which a vaccine was administered

Commonwealth and Jurisdiction vaccine doses administered

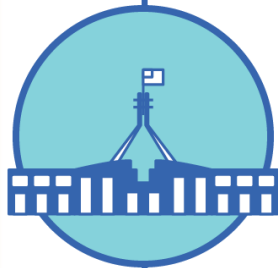
Data as at:
14 Mar 2022



55,223,539 total vaccine
doses administered nationally as at 14 March
+ 74,424 recorded in the last 24 hours



20,404,832
doses administered by state
and territory facilities
+ 20,636
recorded in the last 24 hours



34,818,707
doses administered by
commonwealth facilities
+ 53,788
recorded in the last 24 hours

33,559,308 total vaccine doses
administered in primary care settings
1,259,399 total vaccine doses
administered in aged care and disability
settings

NSW	Jurisdictions	Commonwealth
Cumulative	4,992,055	12,205,797
Daily increase	4,924	23,344

VIC	Jurisdictions	Commonwealth
Cumulative	5,902,570	8,674,779
Daily increase	4,060	3,633

QLD	Jurisdictions	Commonwealth
Cumulative	3,748,866	6,726,596
Daily increase	2,517	12,760

WA	Jurisdictions	Commonwealth
Cumulative	2,398,485	3,596,865
Daily increase	3,293	12,624

TAS	Jurisdictions	Commonwealth
Cumulative	595,565	636,669
Daily increase	1,735	237

SA	Jurisdictions	Commonwealth
Cumulative	1,728,556	2,064,801
Daily increase	1,660	552

ACT	Jurisdictions	Commonwealth
Cumulative	723,927	691,148
Daily increase	1,757	260

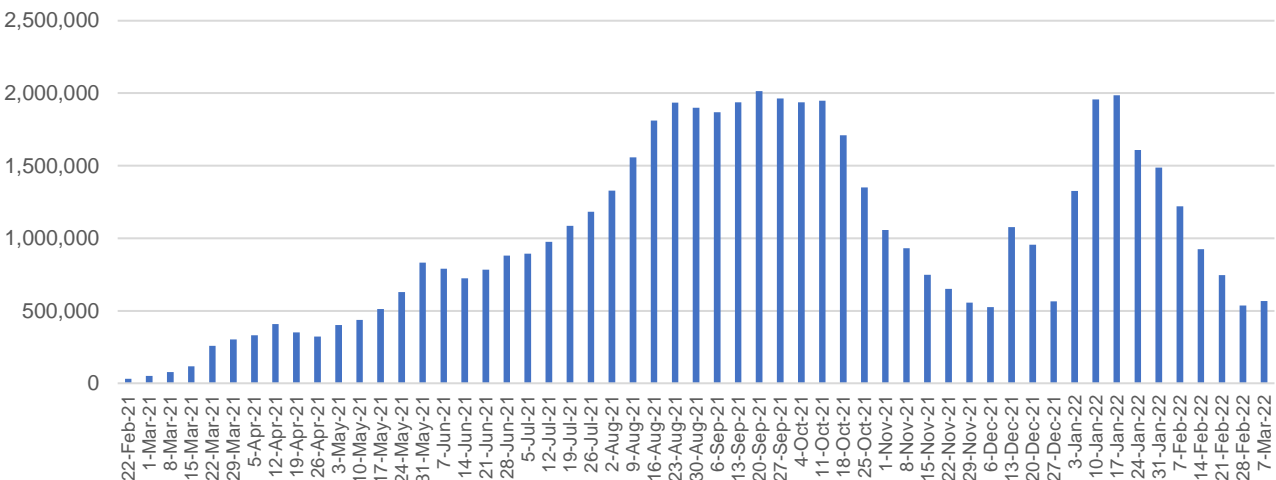
NT	Jurisdictions	Commonwealth
Cumulative	314,808	222,052
Daily increase	690	378

Vaccine milestone charts

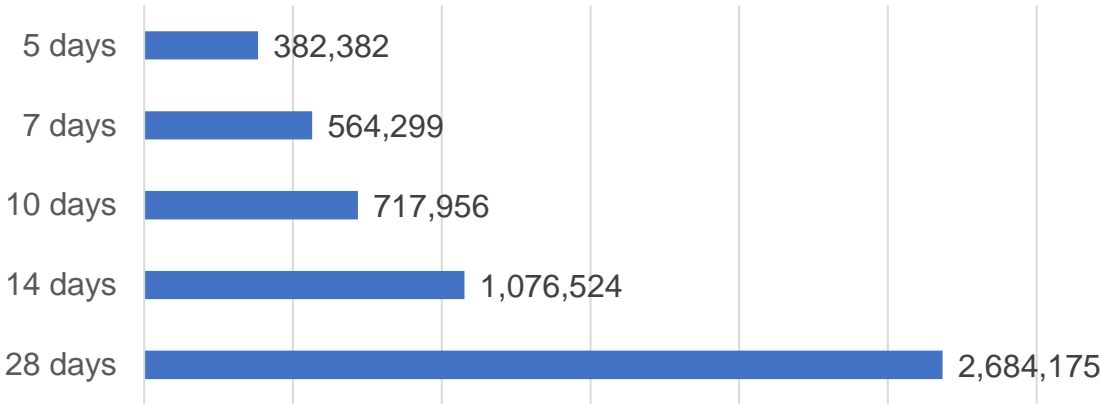
Data as at:
14 Mar 2022

Australia's COVID-19
Vaccine Roadmap

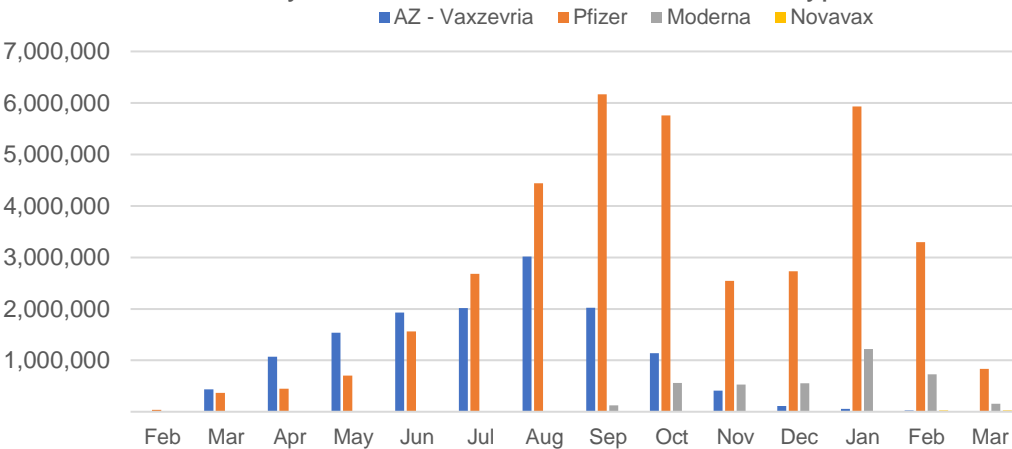
Doses Administered by Week



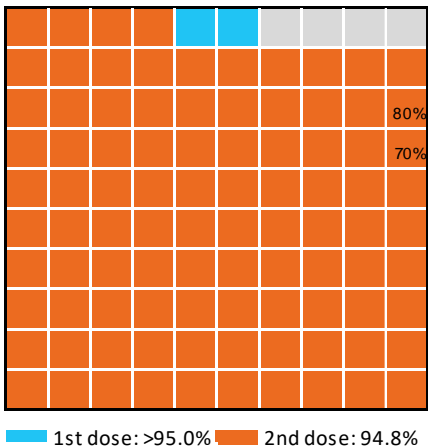
Doses Reported



Doses by administration month and vaccine type



Eligible population percentage coverage



*Each square represents 1% of the national population.
Squares are filled as milestones are achieved.

*Sourced from the Australian Immunisation Register.

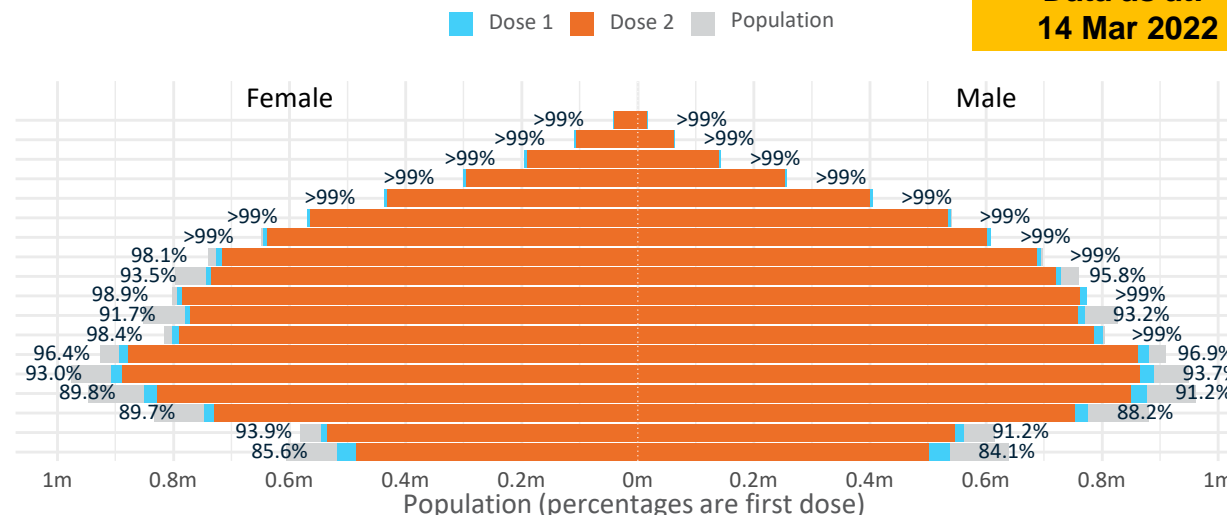
Data as at:
14 Mar 2022

Doses by age and sex

First and second doses by age and sex

	16+	50+	12-15	5-11
Dose 1	96.57% (19,912,376 doses / 20,619,959 people)	>99% (8,799,490 doses / 8,749,703 people)	84.87% (1,055,799 doses / 1,243,990 people)	51.27% (1,167,245 doses / 2,276,638 people)
Dose 2	94.78% (19,542,922 doses / 20,619,959 people)	>99% (8,681,096 doses / 8,749,703 people)	79.32% (986,726 doses / 1,243,990 people)	9.40% (213,924 doses / 2,276,638 people)

Age	Dose 1	Dose 2
95+	59,378 (>99%)	55,944 (>99%)
90-94	173,496 (>99%)	167,539 (>99%)
85-89	338,516 (>99%)	330,931 (>99%)
80-84	557,057 (>99%)	548,989 (>99%)
75-79	841,240 (>99%)	831,864 (>99%)
70-74	1,110,412 (>99%)	1,098,305 (>99%)
65-69	1,256,296 (>99%)	1,240,724 (98.6%)
60-64	1,422,200 (99.0%)	1,404,282 (97.7%)
55-59	1,473,926 (94.7%)	1,455,391 (93.6%)
50-54	1,566,969 (>99%)	1,547,127 (98.9%)
45-49	1,551,179 (92.5%)	1,529,238 (91.2%)
40-44	1,606,022 (>99%)	1,578,175 (97.4%)
35-39	1,778,853 (96.9%)	1,742,745 (95.0%)
30-34	1,804,878 (93.8%)	1,759,176 (91.4%)
25-29	1,736,107 (91.1%)	1,685,793 (88.4%)
20-24	1,528,628 (89.3%)	1,486,806 (86.8%)
16-19	1,107,219 (92.6%)	1,079,893 (90.3%)
12-15	1,055,799 (84.9%)	986,726 (79.3%)

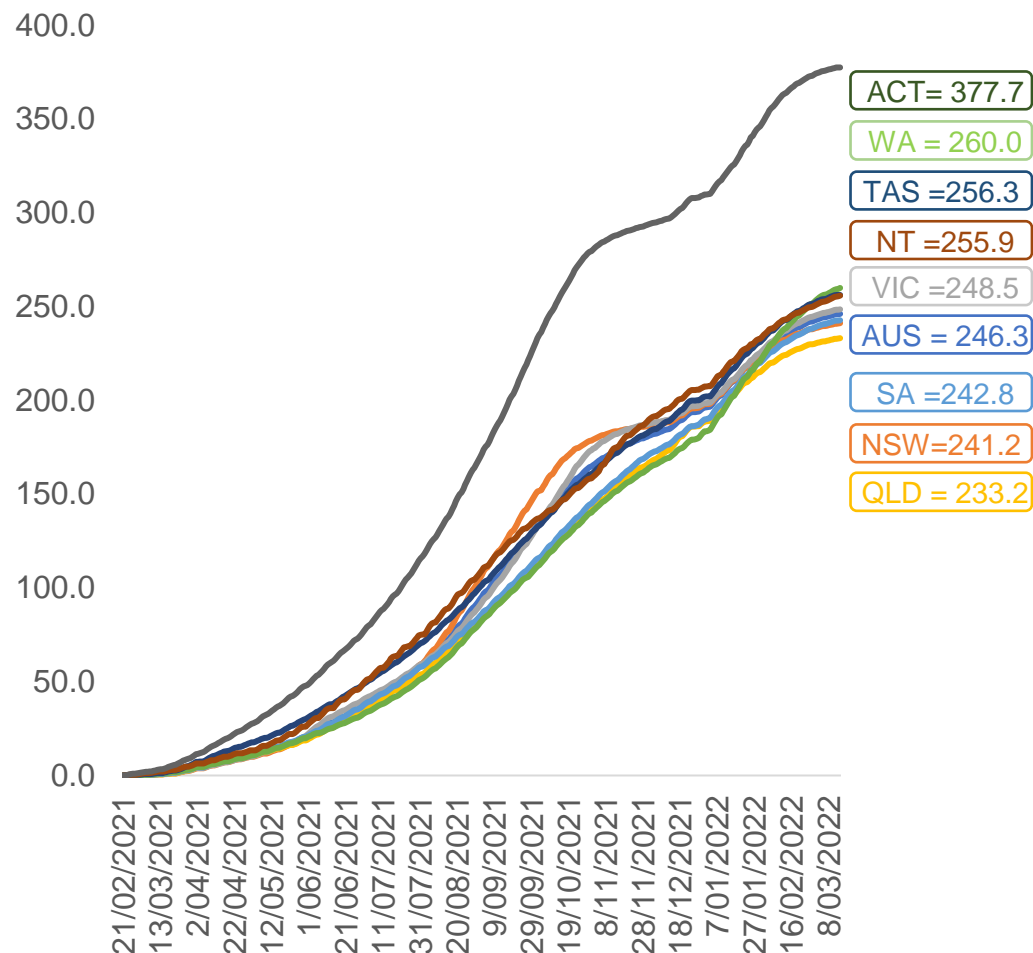


	AUS	ACT	NSW	NT	QLD	SA	TAS	VIC	WA
16 and over - dose 1	19,912,376	351,186	6,297,435	174,352	3,832,027	1,367,050	442,470	5,137,459	2,077,986
16 and over - dose 2	19,542,922	345,760	6,201,433	169,217	3,755,025	1,331,774	432,263	5,060,001	2,032,039
16 and over - population	20,619,959*	344,037	6,565,651	190,571	4,112,707	1,440,400	440,172	5,407,574	2,114,978
16 and over % with dose 1	96.57%	>99%	95.91%	91.49%	93.18%	94.91%	>99%	95.00%	98.25%
16 and over % with dose 2	94.78%	>99%	94.45%	88.79%	91.30%	92.46%	98.20%	93.57%	96.08%
5 to 11 - dose 1	1,167,245	31,424	347,428	12,888	205,814	82,829	28,150	319,535	132,087
5 to 11 - dose 2	213,924	7,231	71,401	1,962	42,686	12,893	7,474	51,720	17,657
5 to 11 - population	2,276,638	39,789	716,460	24,750	478,731	148,816	45,033	578,499	244,154
5 to 11 % with dose 1	51.27%	78.98%	48.49%	52.07%	42.99%	55.66%	62.51%	55.24%	54.10%
5 to 11 % with dose 2	9.40%	18.17%	9.97%	7.93%	8.92%	8.66%	16.60%	8.94%	7.23%
12 to 15 - dose 1	1,055,799	20,074	326,049	10,904	207,764	68,442	22,890	276,130	114,455
12 to 15 - dose 2	986,726	19,158	308,734	9,662	192,223	63,776	21,484	261,283	102,576
12 to 15 - population	1,243,990	19,693	390,330	13,060	270,146	82,747	26,308	308,611	132,869
12 to 15 % with dose 1	84.87%	>99%	83.53%	83.49%	76.91%	82.71%	87.01%	89.48%	86.14%
12 to 15 % with dose 2	79.32%	97.28%	79.10%	73.98%	71.16%	77.07%	81.66%	84.66%	77.20%

*National population will not equal sum of listed jurisdictions due to a small number of people counted in national population residing in some 'other' territories. Sum of state doses will not add to national total as some records are unable to be geocoded to a State or Territory.
Doses sourced from Australian Immunisation Register, population from ABS ERP June 2020

Vaccinations by location

Cumulative total doses administered vs eligible state populations*

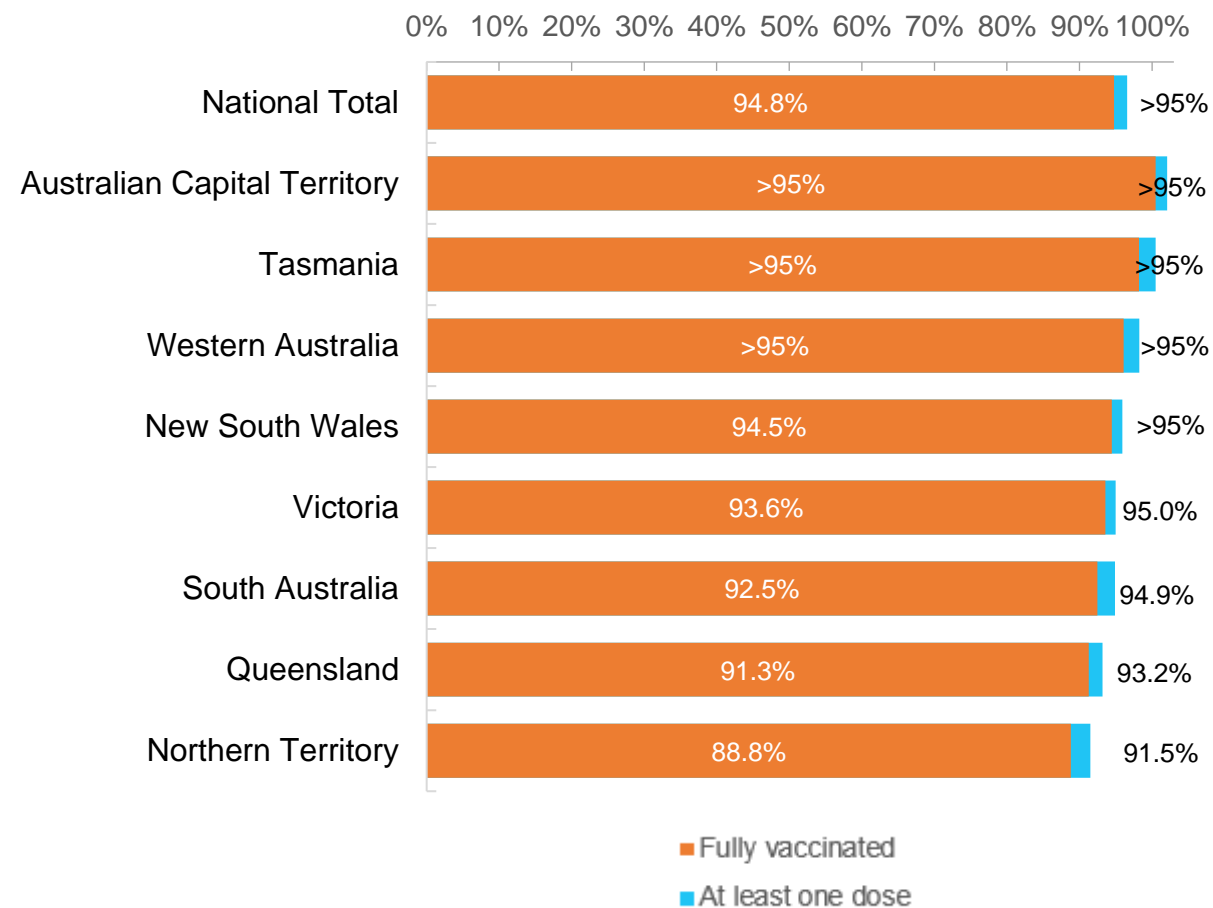


*Not an indication of percentage vaccinated, numbers will exceed 100 due to multiple doses required per person of the population. All doses are included for those aged 12 and above, and are based on vaccination provider location.

Data as at:
14 Mar 2022

Australia's COVID-19
Vaccine Roadmap

First and Second Doses by residential location



Aboriginal and Torres Strait Islander peoples

Number of people vaccinated

Data as at:
08 Mar 2022
Updated weekly

Australia's COVID-19
Vaccine Roadmap



433,759

people over the age of 16
have had at least one dose

83.6%

of people over the age of 16
have had at least one dose



409,697

people over the age of 16
are fully vaccinated

79.0%

of people over the age of 16 are
fully vaccinated



People aged 12 – 15 years

48,162

41,564

67.9%

At least one dose

58.6%

Fully vaccinated

177 Aboriginal community controlled health services (ACCHS)

0#

50

27

44

12

3

21

20

ACT

NSW

NT

QLD

SA

TAS

VIC

WA

Medicare Address State ^{##}	Individuals Dose 1	Individuals Dose 1 %	Individuals Dose 2	Individuals Dose 2 %
Australian Capital Territory	4,848	91.4%	4,721	89.0%
New South Wales	134,659	86.6%	131,311	84.4%
Northern Territory	42,080	88.9%	39,420	83.3%
Queensland	114,424	80.7%	107,675	76.0%
South Australia	19,667	79.2%	17,966	72.3%
Tasmania	14,001	88.3%	13,491	85.0%
Victoria	35,211	89.5%	34,292	87.1%
Western Australia	52,266	83.2%	46,258	73.6%
Unknown/Other Territories	16,603	64.4%	14,563	56.5%
Totals	433,759	83.6%	409,697	79.0%

Source: Australian Immunisation Register

*Identifying as Aboriginal and Torres Strait Islander is optional and the estimated population may be under reported.

**Includes all Aboriginal and Torres Strait Islander peoples who have received a vaccination, not limited to those administered in an ACCHS setting

#ACCHS in the ACT are currently operating as a Commonwealth Vaccine Clinics so not included to avoid double counting

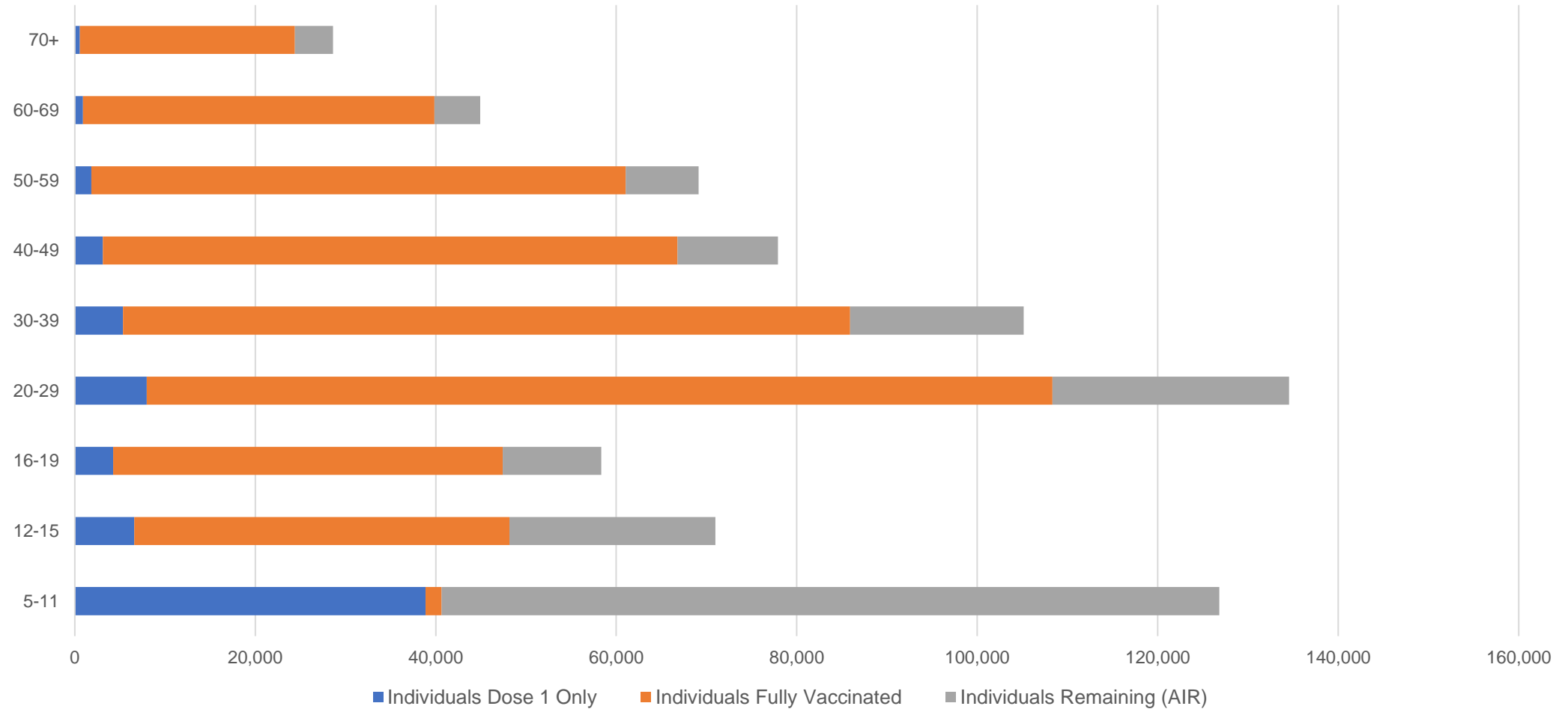
##The above table includes all identified Aboriginal and Torres Strait Islander people who are aged 16 and above by their state of residence.

Aboriginal and Torres Strait Islander peoples

Number of people vaccinated by age

Data as at:
08 Mar 2022
Updated weekly

Australia's COVID-19
Vaccine Roadmap



Source: Australian Immunisation Register

Commonwealth primary care

Data as at:
14 Mar 2022

Australia's COVID-19
Vaccine Roadmap



Primary care vaccine administration sites

5,788	127	177	3,585
GPs	CVCs	ACCHS	Pharmacies



33,559,308 total vaccine doses administered
primary care settings as at 14 March
+ 53,589 recorded in the last 24 hours

Primary care vaccinations by provider type

	Doses administered	Daily increase	7 day increase
General Practice* includes other Commonwealth	27,279,069	34,512	268,403
Pharmacy	6,280,239	19,077	139,948

NSW
11,663,411
(+23,216 daily increase)

VIC
8,371,544
(+3,655 daily increase)

QLD
6,456,334
(+12,945 daily increase)

WA
3,472,368
(+12,366 daily increase)

TAS
617,549
(+272 daily increase)

SA
1,988,779
(+602 daily increase)

ACT
529,128
(+262 daily increase)

NT
201,431
(+307 daily increase)

258,764

doses administered to persons
residing in other territories or with
missing residential information

*General practice includes Commonwealth Vaccination Clinics, Aboriginal Community Health Centres, Royal Flying Doctor Service and other Commonwealth vaccination facilities

Source: Australian Immunisation Register

Data as at:
14 Mar 2022

Commonwealth aged care and disability doses administered



1,259,399 (+ 199 last 24 hours)

Total vaccine doses administered in aged care and disability facilities as at 14 March

Number of doses administered as part of the Commonwealth aged and disability care rollout

NSW
557,588
(+47 daily increase)

VIC
234,789
(+11 daily increase)

QLD
199,004
(+41 daily increase)

WA
104,246
(+119 daily increase)

TAS
22,442
(-2# daily increase)

SA
83,897
(-6# daily increase)

ACT
16,512
(-1# daily increase)

NT
7,388
(+2 daily increase)

33,533

doses administered to persons residing in other territories or with missing residential information

*Sourced from the Australian Immunisation Register. Includes all persons vaccinated at participating residential aged care, disability and related industry settings.

**State level breakdown indicates the residential location and may not align to the state in which the vaccination occurred.

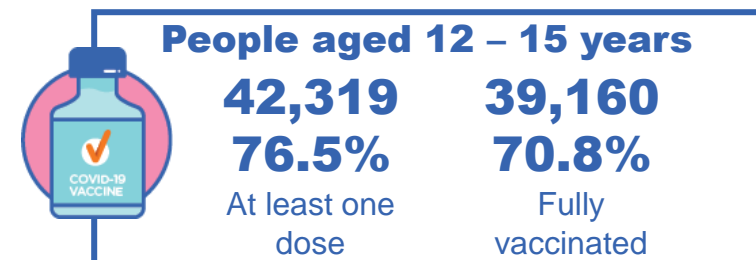
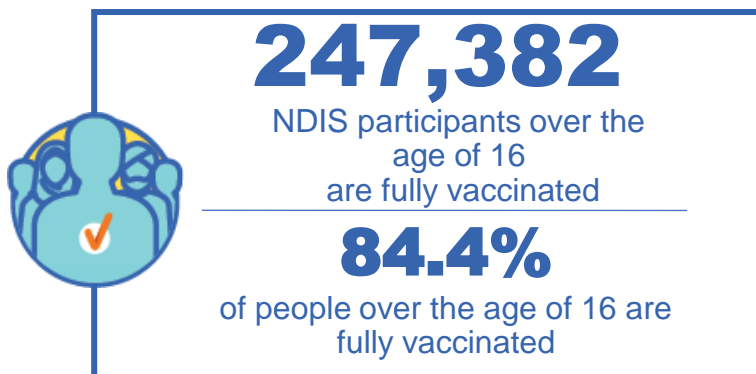
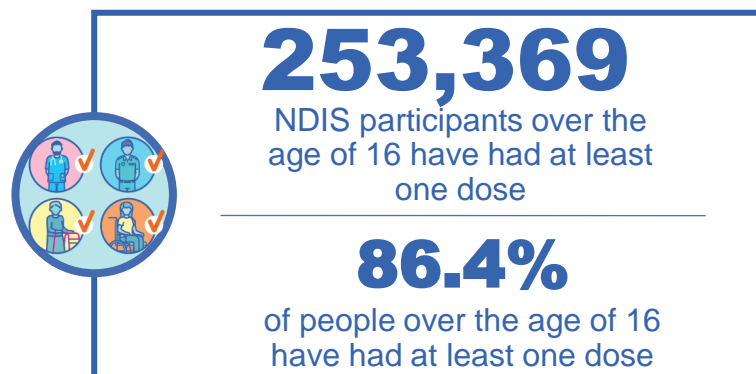
Numbers are calculated as difference in daily cumulative reported numbers to allow for historical corrections in all data sources. This can occasionally result in negative numbers, such as for TAS, SA and ACT where historical details about doses have been updated.

Source: Australian Immunisation Register

National Disability Insurance Scheme (NDIS) reported vaccinations

Data as at:
10 March 2022
Updated weekly

Australia's COVID-19
Vaccine Roadmap



NDIS participant vaccinations

	People aged 16+ with at least one dose	People aged 16+ fully vaccinated	% People aged 16+ with at least one dose	% People aged 16+ fully vaccinated
ACT	4,815	4,744	88.8%	87.5%
NSW	78,108	76,761	87.1%	85.6%
NT	2,200	2,106	77.1%	73.8%
QLD	49,751	48,519	84.6%	82.5%
SA	20,615	19,943	84.0%	81.3%
TAS	6,345	6,147	86.3%	83.6%
VIC	67,537	66,176	87.7%	85.9%
WA	23,998	22,986	87.2%	83.5%
National	253,369	247,382	86.4%	84.4%

Source: Linkage between National Disability Insurance Agency data and the Australian Immunisation Register. Total NDIS participant numbers as at 28th February. Australian Immunisation Register data as at 9 March. Includes all participants regardless of residence type.

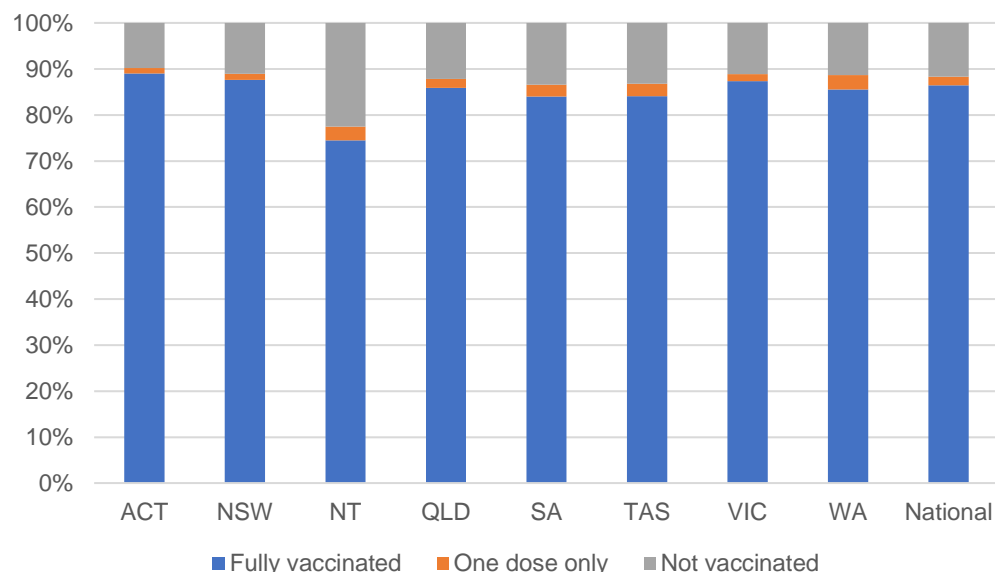
National Disability Insurance Scheme (NDIS) reported vaccinations

Data as at:
10 March 2022
Updated Weekly

Australia's COVID-19
Vaccine Roadmap

NATIONAL	Total people with at least one dose	People fully vaccinated	Total number of individuals in cohort	% People with at least one dose	% People fully vaccinated
NDIS participants living in disability accommodation	20,598	20,191	23,352	88.2%	86.5%

NDIS participants in disability and aged care accommodation



Source: Linkage between National Disability Insurance Agency data and the Australian Immunisation Register. Includes participants residing in disability accommodation only.

Source: Total NDIS participant numbers as at 28th February. Participant data as at 9 March. Australian Immunisation Register data as at 9 March. Worker data as at 10 March.

NDIS workforce vaccinations

	NDIS workers with at least one dose	NDIS workers fully vaccinated	% NDIS workers with at least one dose	% NDIS workers fully vaccinated
NSW	120,178	117,760	97.9%	96.0%
VIC	116,128	108,193	98.2%	91.5%
QLD	68,810	67,813	97.3%	95.9%
WA	32,680	30,259	98.4%	91.1%
SA	35,209	32,003	98.1%	89.1%
TAS	10,778	10,476	99.6%	96.8%
ACT	3,550	3,519	99.6%	98.8%
NT	3,481	3,288	99.7%	94.1%
TOTAL	390,814	373,311	98.0%	93.6%

Source: the NDIS Commission has established a requirement for registered NDIS providers who provide intensive disability support services to report on the vaccination status of workers they employ, or otherwise engage, to deliver NDIS-funded supports and services, and who are required to be vaccinated in accordance with in-force state and territory public health orders. The statistics reflect data reported to the NDIS Commission by registered NDIS providers and should be considered indicative and subject to change

Note: Some registered NDIS providers are yet to report on the vaccination status of their workforce. The NDIS Commission is working with those providers around reporting requirements.

Remaining workers not included include those exempt from vaccination requirements, workers whose vaccination status is not yet verified by the provider (such as workers on leave) and provider reporting anomalies.

Residential aged care vaccination rollout

Australia's COVID-19
Vaccine Roadmap

Data as at:
10 Mar 2022
Updated weekly

Residential aged care facilities status

100%

Commonwealth facilities
visited (2,537 planned sites)

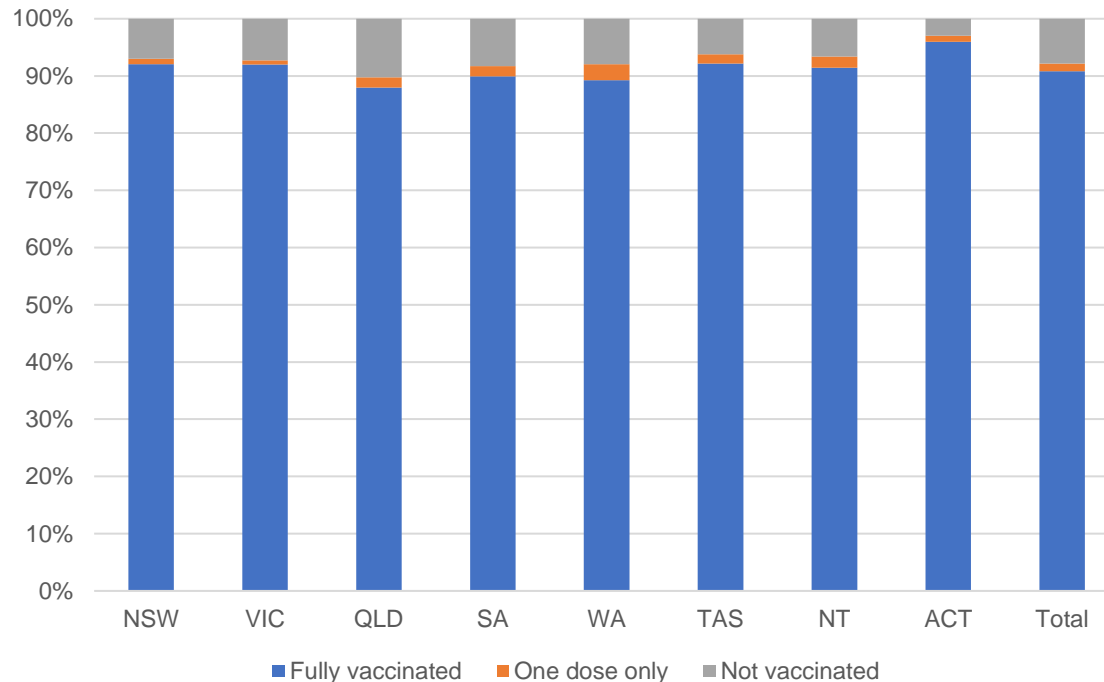
173,652

People fully vaccinated

176,173

People with at least
one dose

Aged care resident vaccinations



Aged care worker vaccinations

Jurisdictions	Total workers with at least one dose	Workers fully vaccinated	% Workers with at least one dose	% Workers fully vaccinated
NSW	78,694	78,682	98.4%	98.4%
VIC	68,396	68,395	98.1%	98.1%
QLD	48,200	48,198	98.0%	98.0%
SA	26,738	26,714	98.8%	98.7%
WA	23,879	23,877	99.7%	99.7%
TAS	7,799	7,799	99.9%	99.9%
NT	870	870	99.9%	99.9%
ACT	3,063	3,063	100.0%	100.0%
Total	257,639	257,598	98.5%	98.5%

Source: My Aged Care Portal vaccination progress

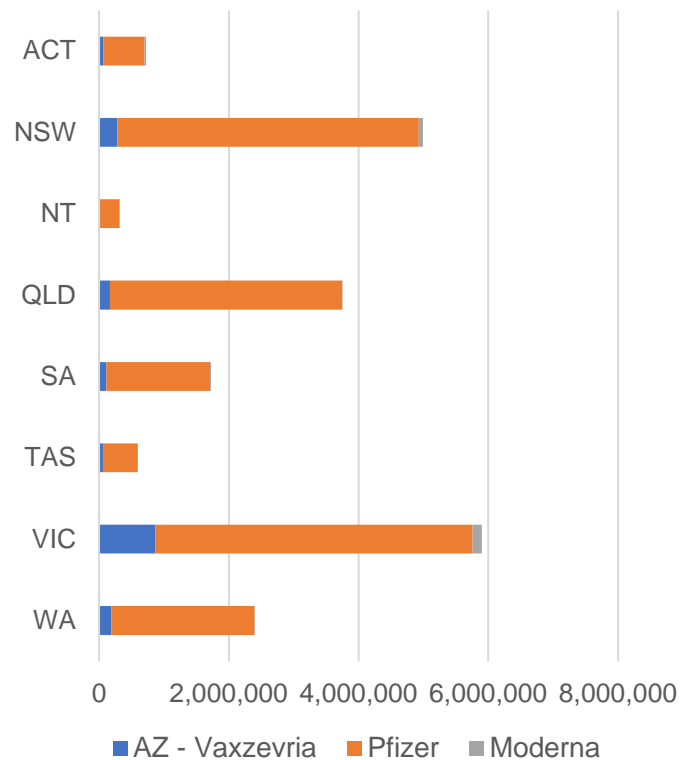
*Status updates are provided by facilities at least once per week. Reporting is updated Monday to Friday to encompass different facility updates being made on different days.

Data is sourced directly from Aged Care Service Providers and is not drawn or closely aligned with data from AIR due to inconsistencies and potential lags in uploading of records.

Data as at:
14 Mar 2022

Jurisdiction administered

Total vaccine doses administered in State and Territory clinics as at 14 March



20,404,832 total vaccine doses administered
in State and Territory clinics as at 14 March
+ **20,636** recorded in the last 24 hours
+ **152,242** recorded in the last 7 days

NSW
4,992,055
(+4,924 daily
increase)

VIC
5,902,570
(+4,060 daily
increase)

QLD
3,748,866
(+2,517 daily
increase)

WA
2,398,485
(+3,293 daily
increase)

TAS
595,565
(+1,735 daily
increase)

SA
1,728,556
(+1,660 daily
increase)

ACT
723,927
(+1,757 daily
increase)

NT
314,808
(+690 daily
increase)

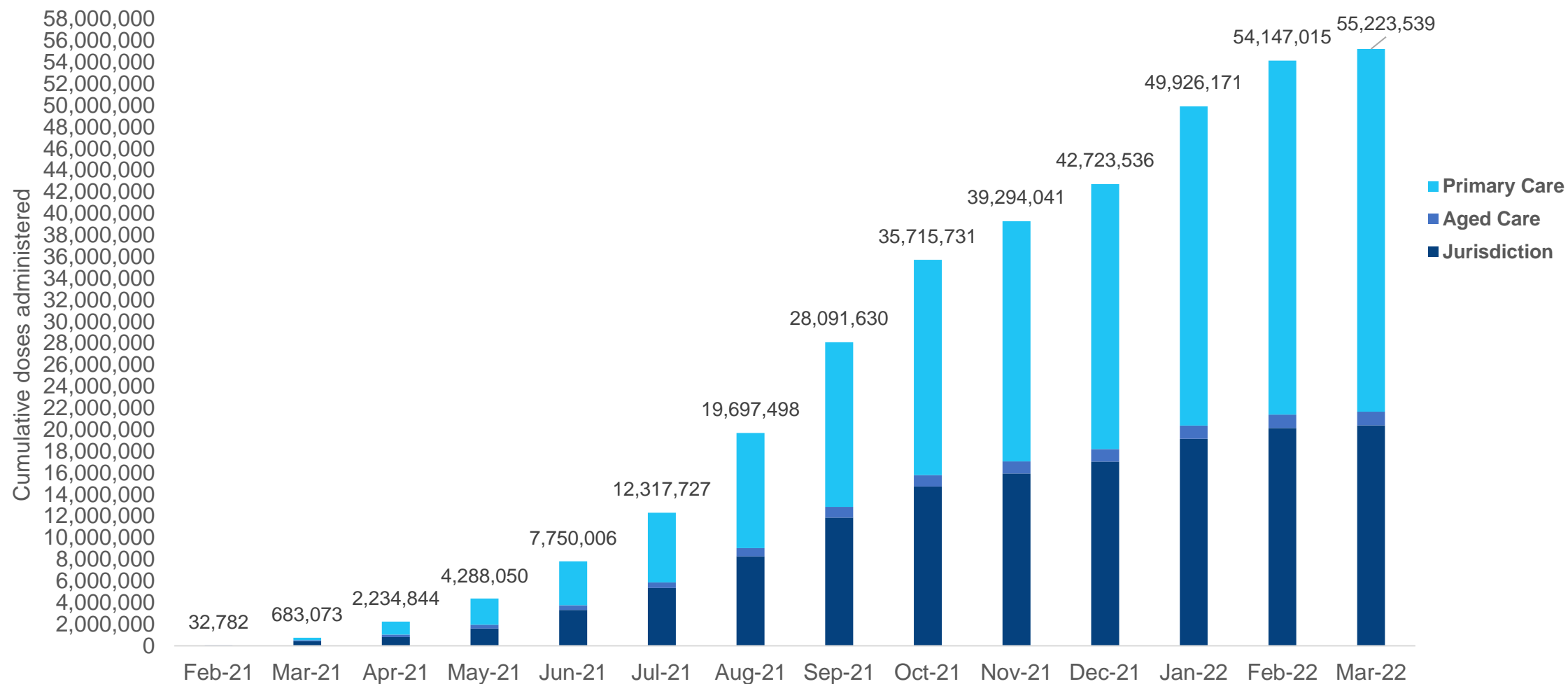
*Sourced from the Australian Immunisation Register. Numbers are calculated as difference in daily cumulative reported numbers to allow for historical corrections.

Source: Australian Immunisation Register

Cumulative doses administered by channel

Data as at:
14 Mar 2022

Australia's COVID-19
Vaccine Roadmap



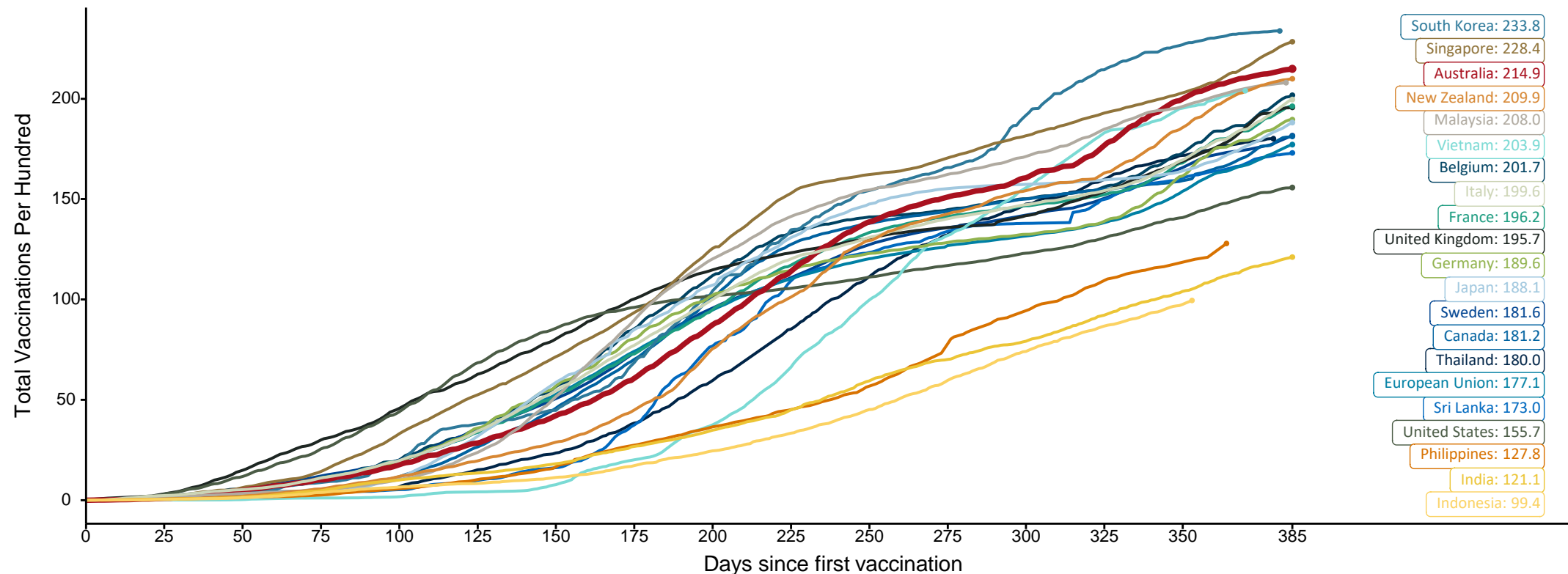
Source: Australian Immunisation Register

Doses at equivalent stages of rollout (Day 385)

Data as at:
14 Mar 2022

The x-axis is truncated at the length of Australia's vaccination program. Countries with intermittent reporting have had their doses per 100 imputed to Australia's current stage of rollout. Israel excluded as it is beyond scale of the graph

Cumulative doses administered (14 Mar): **55,223,539**

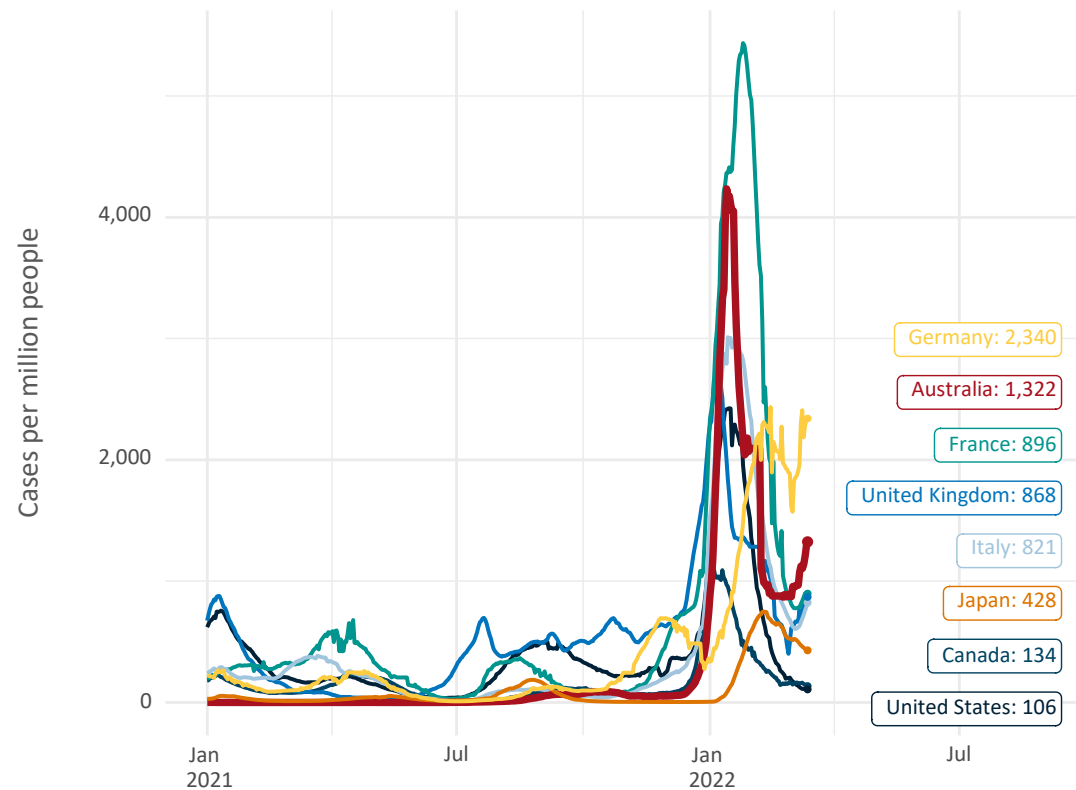


Note: From 11 January 2022, data for Australia includes all doses administered to people 5 and over. Prior to 11 January, data was for 12 and over.
Source: Department of Health (Australia), Our World in Data (international)
Latest data: 14 March

Data as at:
14 Mar 2022

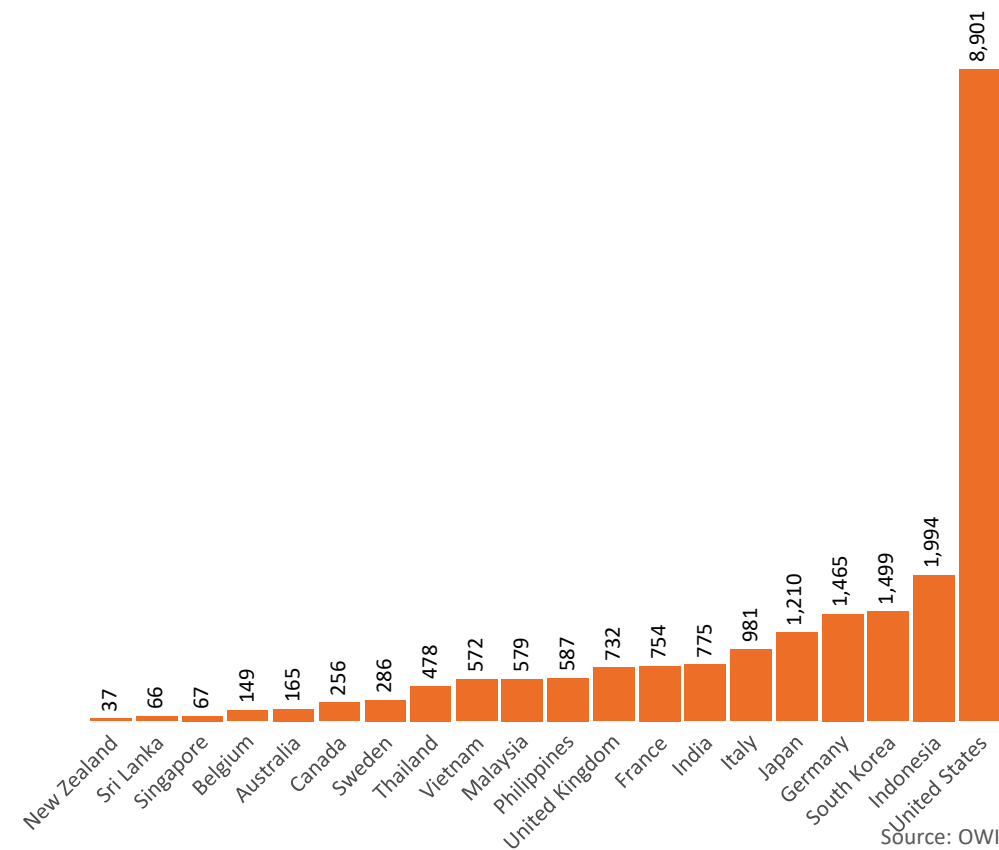
International data – COVID-19

New daily cases per million in 2021, Australia and G7 countries
Smoothed - 7 day average



Source: OWID
Data downloaded: 15 Mar 2022 07:09
Latest data: 13 Mar 2022

COVID-19 deaths in past 7 days - Australia and select countries



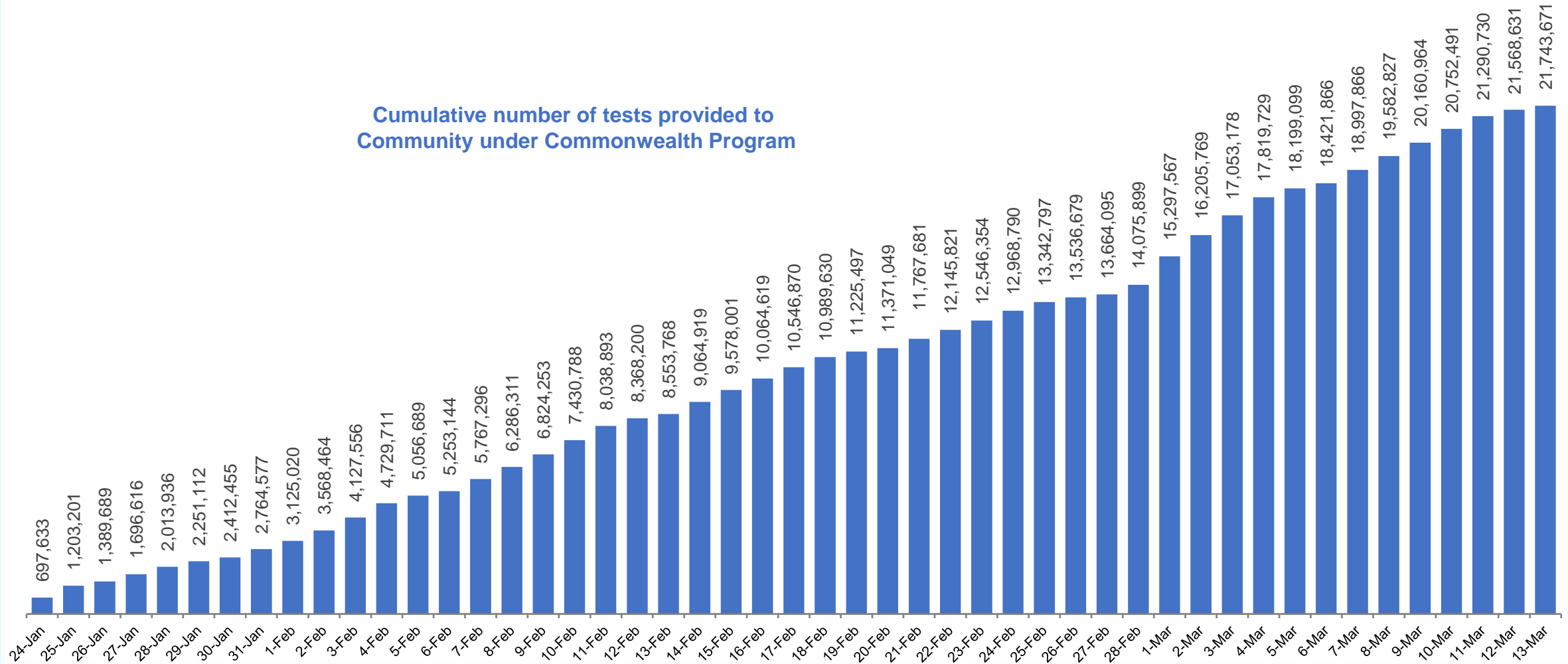
Source: OWID
Data downloaded: 15 Mar 2022 07:09
Latest data: 13 Mar 2022

Concessional rapid antigen test program

5,603 pharmacies have delivered over **21.7 million rapid antigen tests** to more than **3.6m eligible concession card holders** under the Government's concessional rapid antigen test program.

**Data as at:
14 Mar 2022**

Cumulative number of tests provided to
Community under Commonwealth Program



Pandemic Response Payments

Australia's COVID-19
Vaccine Roadmap

Data as at midnight: 13 Mar 2022
Updated weekly



COVID Disaster Payment:	5.89 million claims received - 2.19 million individuals paid a total of \$12.59 billion.
\$200 Income Support Payment:	353,000 claims received - 183,000 individuals paid a total of \$268.9 million.
Pandemic Leave Disaster Payment:	1,350,000 claims received - 848,000 individuals paid a total of \$953.4 million.



COVID Disaster Payment

assisting during a lockdown
event in a Commonwealth
hotspot.

Income Support Payment \$200

for income support
recipients who lost at
least 8 hours of work.

Pandemic Leave Disaster Payment

for those who have to
self-isolate, quarantine
or care.

For more information visit:
servicesaustralia.gov.au

COVID-19 DISASTER PAYMENTS

Northern Territory

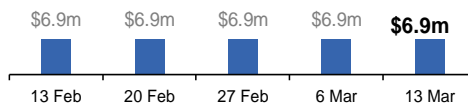
Lockdown (#3) from 16 Nov to 22 Nov
Claiming period ended 27 Dec

**7,500 people have received at least one
COVID Disaster Payment.**

\$6.9m paid out as at 13 Mar 2022.

**Nil paid in initial payments in the week
ending 13 Mar 2022.**

Cumulative payments made by Territory since
activation on 25 Aug 2021.



Victoria

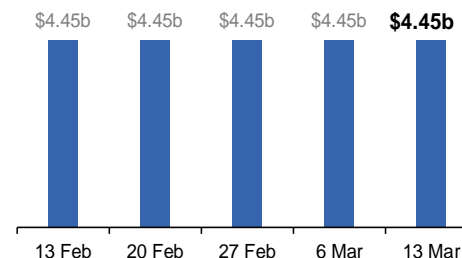
Lockdown (#6) from 6 Aug to 28 Oct
Claiming period ended 9 Dec

**745,000 people have received at least
one COVID Disaster Payment.**

\$4.45b paid out as at 13 Mar 2022.

**\$2,000 paid in initial and reoccurring
payments in the week ending
13 Mar 2022.**

Cumulative payments made by State since
activation on 8 Jun 2021.



New South Wales

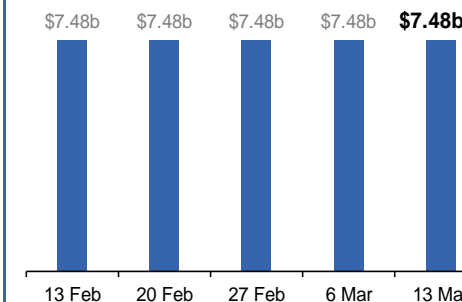
Lockdown from 24 Jun to 10 Oct
Claiming period ended 27 Nov

**1.08m people have received at least
one COVID Disaster Payment.**

\$7.48b paid out as at 13 Mar 2022.

**\$2,000 paid in initial and reoccurring
payments in the week ending
13 Mar 2022.**

Cumulative payments made by State since
activation on 1 Jul 2021.



Australian Capital Territory

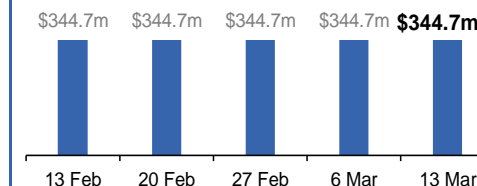
Lockdown from 12 Aug to 14 Oct
Claiming period ended 25 Nov

**65,000 people have received at least
one COVID Disaster Payment.**

\$344.7m paid out as at 13 Mar 2022.

**\$1,000 paid in initial and reoccurring
payments in the week ending
13 Mar 2022.**

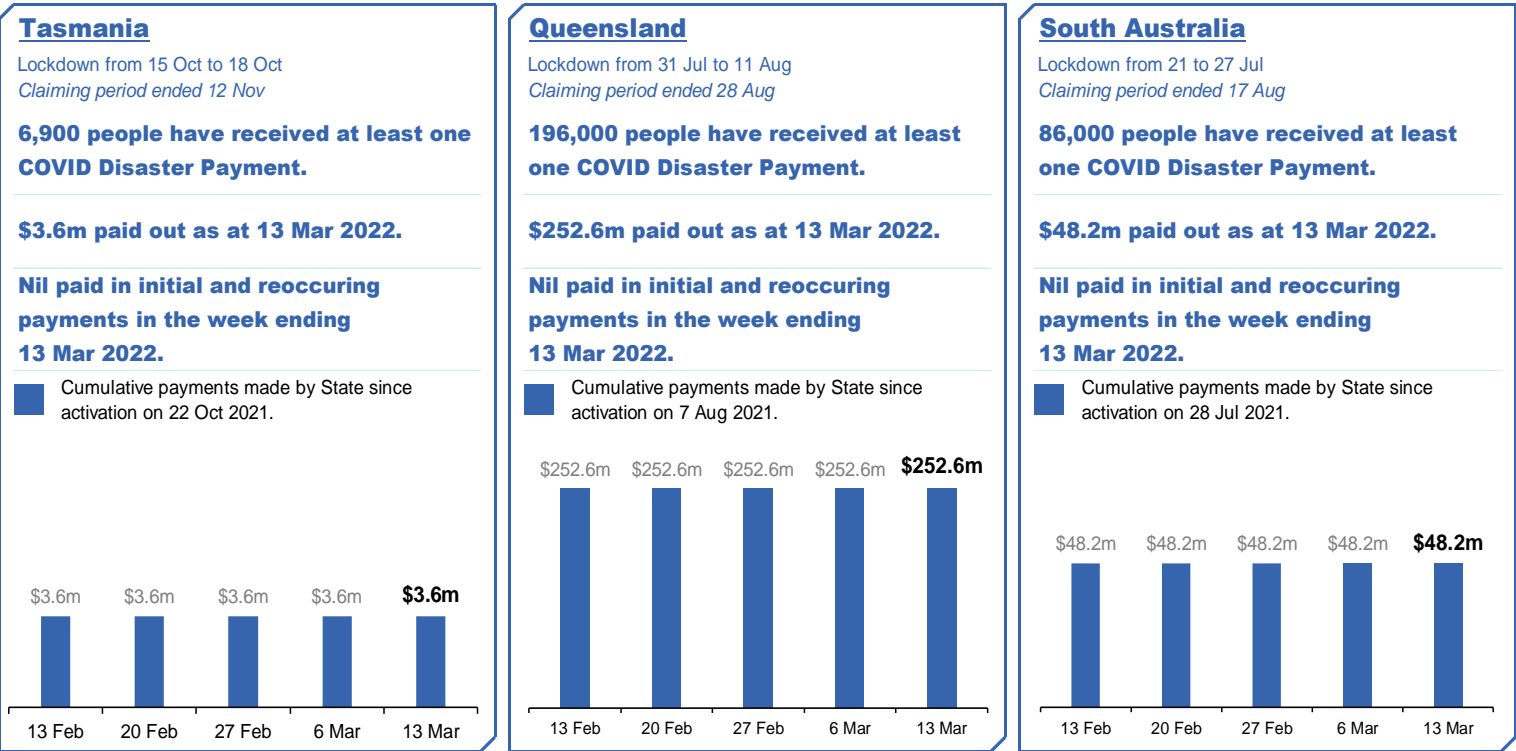
Cumulative payments made by Territory since
activation on 20 Aug 2021.



Pandemic Response Payments (continued)

Data as at midnight: 13 Mar 2022
Updated weekly

COVID-19 DISASTER PAYMENTS



Administration and Utilisation

Doses as at 14 March 2022

	Ordered	Available	Administered	Stock on Hand at Sites	Estimated Dose Utilisation %
	Up to 13/03/22	Delivered up to 06/03/22 including redistributions	Up to 14/03/22		(see note)
NSW	6,111,572	6,111,272	4,992,055	508,090	92%
VIC	6,985,554	6,984,654	5,902,570	448,435	95%
QLD	4,846,802	4,805,142	3,748,866	575,865	88%
WA	2,633,108	2,624,208	2,398,485	107,311	Fully utilised
SA	2,151,120	2,122,120	1,728,556	181,352	91%
TAS	646,290	646,290	595,565	5,054	Fully utilised
NT	399,014	389,026	314,808	39,966	91%
ACT	651,186	651,186	723,927	21,154	Fully utilised
Jurisdiction delivered total	24,424,646	24,333,898	20,404,832	1,887,226	94%
Commonwealth Vaccination Providers	1,362,222	1,357,436	1,259,399	6,992	N/A
Commonwealth Primary Care & Other	49,444,036	48,732,546	33,559,308	10,300,621	79%
Total	75,230,904	74,423,880	55,223,539	12,194,839	84%

About this data

- Ordered – Total doses delivered to sites. Based on logistics provider data. This figure includes doses allocated for administration in the coming week.
- Available – total doses that could have been administered to date, less doses re-distributed from States & Territories to Primary Care or Commonwealth Vaccination Providers (i.e., does not include those deliveries recently received, and intended for use in the coming week).
- Administered – Doses administered as at 14 March 2022.
- Stock on Hand at Sites – Available doses minus Administered doses and a small % wastage.
- The dose utilisation is calculated based on the total doses administered and a small % wastage in line with international standards in relation to total available doses.
- For Commonwealth Vaccination Providers, the doses available for administration is for the full period (up to 14 March 2022).
- Commonwealth Vaccination Providers utilisation is not provided as the in-reach rollout is demand-based.