



Australian Government
Operation COVID Shield

COVID-19 Vaccine Roll-out

14 March 2022

Data as at:
13 Mar 2022

Total vaccine doses



55,149,115 total vaccine doses administered nationally as at 13 March

+34,594 recorded in the last 24 hours



19,908,873

people have had at least one dose

>95%

of people over the age of 16 have had at least one dose



19,537,741

people are fully vaccinated

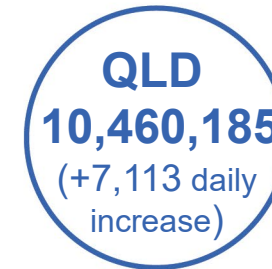
94.8%

of people over the age of 16 are fully vaccinated



12,209,966

people over the age of 16 who have received more than two doses



*Administration state breakdown indicates state in which a vaccine was administered

**Overall dose count includes instances of more than two doses per person in a small number of cases.

Booster Vaccinations

Data as at:
13 Mar 2022



172,453
Indigenous people who have received more than two doses
49.4%
of eligible population (349,196)



159,320
Aged Care Residents who have received more than two doses##
91.7%
of eligible population (173,668)



162,291 NDIS participants | **19,738** NDIS residents
who have received more than two doses#
69.6% of eligible population (233,000) | **84.7%** of eligible population (23,000)



12,209,966 total people who have received more than two doses nationally
+14,145 recorded in the last 24 hours
65.6% of people who are eligible (18,611,369) have received more than two doses

NSW	People	% of Eligible
Cumulative	3,752,553	61.1%
Daily increase	2,681	

VIC	People	% of Eligible
Cumulative	3,325,596	66.6%
Daily increase	4,293	

QLD	People	% of Eligible
Cumulative	2,106,232	61.5%
Daily increase	2,439	

WA	People	% of Eligible
Cumulative	1,448,981	84.1%
Daily increase	2,722	

SA	People	% of Eligible
Cumulative	865,044	70.2%
Daily increase	1,138	

TAS	People	% of Eligible
Cumulative	272,087	67.8%
Daily increase	53	

ACT	People	% of Eligible
Cumulative	248,784	72.6%
Daily increase	427	

NT	People	% of Eligible
Cumulative	101,070	64.9%
Daily increase	158	

89,619

doses administered to persons residing in other territories or with missing residential information

*People may belong to multiple groups and could be represented in the above breakdowns multiple times.

NDIS participants data as at 10 March 2022.

Aged Care Residents data as at 14 March 2022.

Source: Australian Immunisation Register

Data as at: 13 Mar 2022

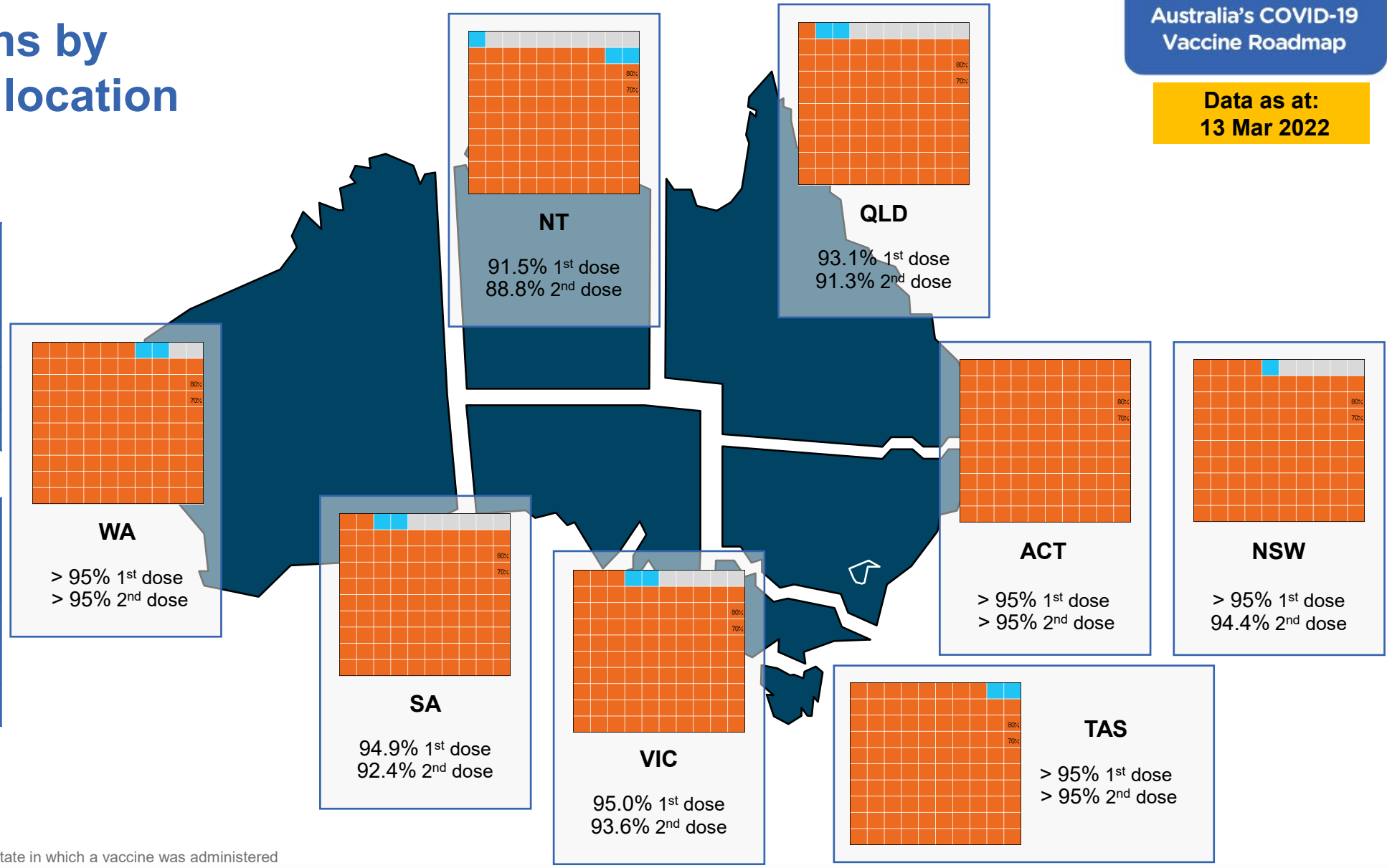
Vaccinations by residential location

First doses

Age	Today	4 weeks ago	8 weeks ago
16+	>95%	>95%	>95%
50+	>95%	>95%	>95%
70+	>95%	>95%	>95%

Fully vaccinated

Age	Today	4 weeks ago	8 weeks ago
16+	94.8%	94.2%	93.0%
50+	>95%	>95%	>95%
70+	>95%	>95%	>95%



*Residential state may differ from the state in which a vaccine was administered

Commonwealth and Jurisdiction vaccine doses administered

Data as at:
13 Mar 2022



55,149,115 total vaccine doses administered nationally as at 13 March

+ **34,594** recorded in the last 24 hours

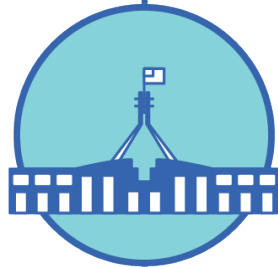


20,384,196

doses administered by state and territory facilities

+ **18,991**

recorded in the last 24 hours



34,764,919

doses administered by commonwealth facilities

+ **15,603**

recorded in the last 24 hours

33,505,719 total vaccine doses administered in primary care settings

1,259,200 total vaccine doses administered in aged care and disability settings

NSW	Jurisdictions	Commonwealth
Cumulative	4,987,131	12,182,453
Daily increase	2,345	4,185

VIC	Jurisdictions	Commonwealth
Cumulative	5,898,510	8,671,146
Daily increase	4,848	3,976

QLD	Jurisdictions	Commonwealth
Cumulative	3,746,349	6,713,836
Daily increase	3,414	3,699

WA	Jurisdictions	Commonwealth
Cumulative	2,395,192	3,584,241
Daily increase	2,175	2,672

TAS	Jurisdictions	Commonwealth
Cumulative	593,830	636,432
Daily increase	2,159	58

SA	Jurisdictions	Commonwealth
Cumulative	1,726,896	2,064,249
Daily increase	2,302	619

ACT	Jurisdictions	Commonwealth
Cumulative	722,170	690,888
Daily increase	1,422	360

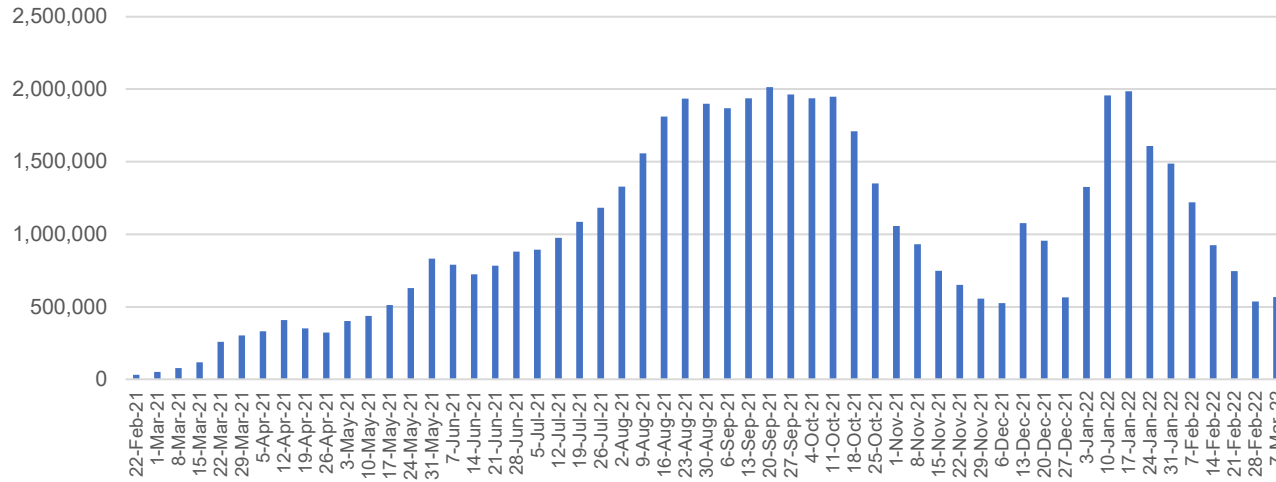
NT	Jurisdictions	Commonwealth
Cumulative	314,118	221,674
Daily increase	326	34

Vaccine milestone charts

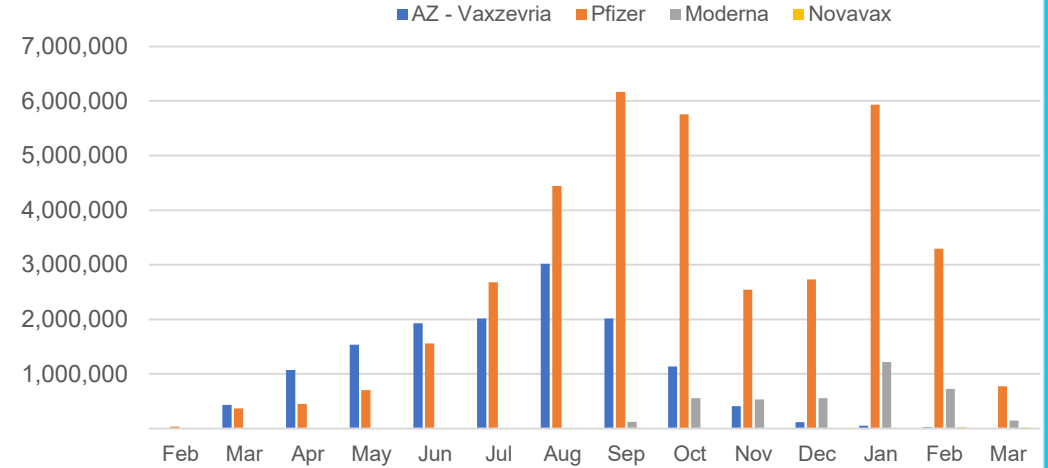
Data as at:
13 Mar 2022

Australia's COVID-19
Vaccine Roadmap

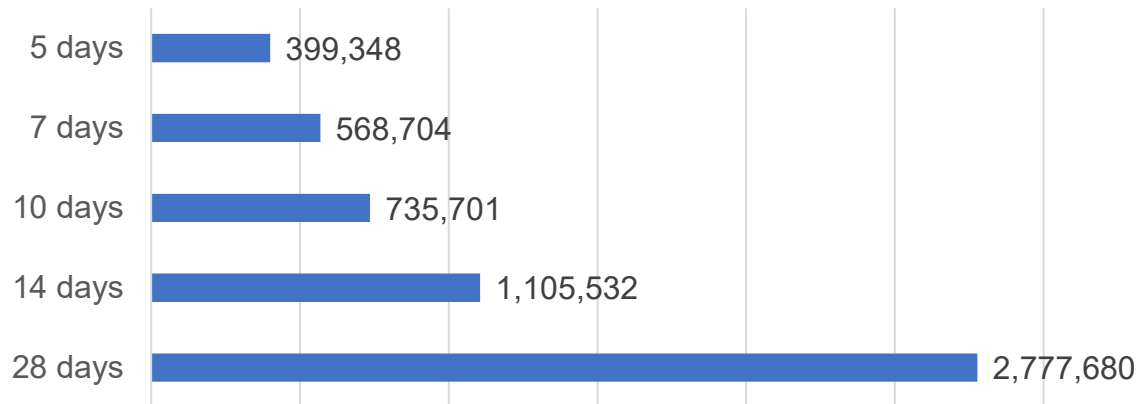
Doses Administered by Week



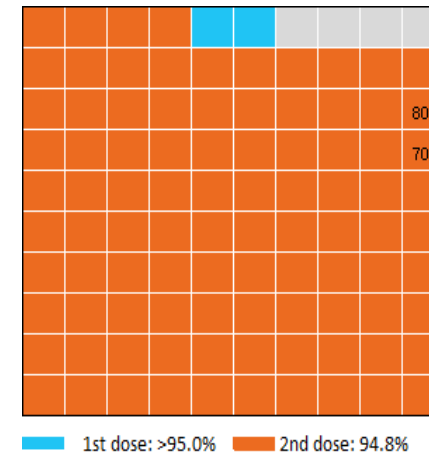
Doses by administration month and vaccine type



Doses Reported



Eligible population percentage coverage



*Each square represents 1% of the national population. Squares are filled as milestones are achieved.

*Sourced from the Australian Immunisation Register.

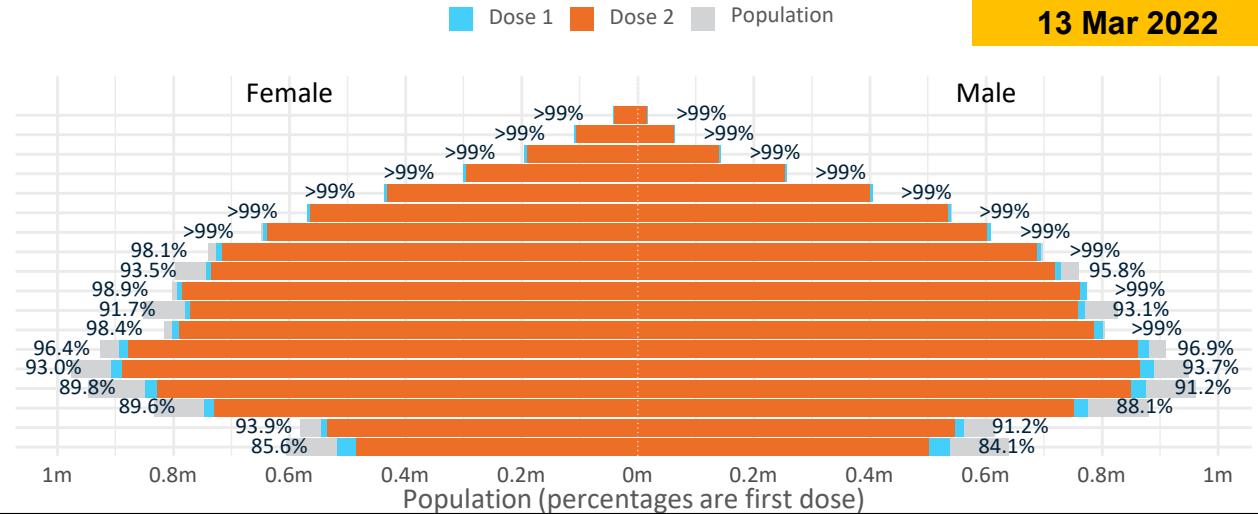
Doses by age and sex

First and second doses by age and sex

	16+	50+	12-15	5-11
Dose 1	96.55% (19,908,873 doses / 20,619,959 people)	>99% (8,797,854 doses / 8,749,703 people)	84.88% (1,055,889 doses / 1,243,990 people)	51.21% (1,165,868 doses / 2,276,638 people)
Dose 2	94.75% (19,537,741 doses / 20,619,959 people)	>99% (8,678,772 doses / 8,749,703 people)	79.30% (986,473 doses / 1,243,990 people)	8.35% (190,032 doses / 2,276,638 people)

Data as at:
13 Mar 2022

Age	Dose 1	Dose 2
95+	59,331 (>99%)	55,892 (>99%)
90-94	173,379 (>99%)	167,416 (>99%)
85-89	338,376 (>99%)	330,751 (>99%)
80-84	556,916 (>99%)	548,812 (>99%)
75-79	840,972 (>99%)	831,553 (>99%)
70-74	1,110,302 (>99%)	1,098,143 (>99%)
65-69	1,256,068 (>99%)	1,240,409 (98.6%)
60-64	1,422,059 (99.0%)	1,404,003 (97.7%)
55-59	1,473,787 (94.7%)	1,455,131 (93.5%)
50-54	1,566,664 (>99%)	1,546,662 (98.9%)
45-49	1,551,011 (92.5%)	1,528,937 (91.2%)
40-44	1,605,849 (>99%)	1,577,813 (97.4%)
35-39	1,778,661 (96.9%)	1,742,362 (95.0%)
30-34	1,804,649 (93.8%)	1,758,779 (91.4%)
25-29	1,735,693 (91.0%)	1,685,312 (88.4%)
20-24	1,528,151 (89.2%)	1,486,205 (86.8%)
16-19	1,107,005 (92.6%)	1,079,561 (90.3%)
12-15	1,055,889 (84.9%)	986,473 (79.3%)



	AUS	ACT	NSW	NT	QLD	SA	TAS	VIC	WA
16 and over - dose 1	19,908,873	351,179	6,296,279	174,328	3,830,848	1,366,964	442,444	5,137,063	2,077,141
16 and over - dose 2	19,537,741	345,759	6,200,292	169,173	3,753,190	1,331,636	432,236	5,059,639	2,030,230
16 and over - population	20,619,959*	344,037	6,565,651	190,571	4,112,707	1,440,400	440,172	5,407,574	2,114,978
16 and over % with dose 1	96.55%	>99%	95.90%	91.48%	93.15%	94.90%	>99%	95.00%	98.21%
16 and over % with dose 2	94.75%	>99%	94.44%	88.77%	91.26%	92.45%	98.20%	93.57%	95.99%
5 to 11 - dose 1	1,165,868	31,404	346,753	12,878	205,648	82,843	28,118	319,556	131,570
5 to 11 - dose 2	190,032	6,491	61,151	1,759	37,839	11,731	5,792	49,164	15,302
5 to 11 - population	2,276,638	39,789	716,460	24,750	478,731	148,816	45,033	578,499	244,154
5 to 11 % with dose 1	51.21%	78.93%	48.40%	52.03%	42.96%	55.67%	62.44%	55.24%	53.89%
5 to 11 % with dose 2	8.35%	16.31%	8.54%	7.11%	7.90%	7.88%	12.86%	8.50%	6.27%
12 to 15 - dose 1	1,055,889	20,085	326,085	10,904	207,818	68,452	22,894	276,185	114,361
12 to 15 - dose 2	986,473	19,161	308,633	9,653	192,160	63,794	21,488	261,405	102,340
12 to 15 - population	1,243,990	19,693	390,330	13,060	270,146	82,747	26,308	308,611	132,869
12 to 15 % with dose 1	84.88%	>99%	83.54%	83.49%	76.93%	82.72%	87.02%	89.49%	86.07%
12 to 15 % with dose 2	79.30%	97.30%	79.07%	73.91%	71.13%	77.10%	81.68%	84.70%	77.02%

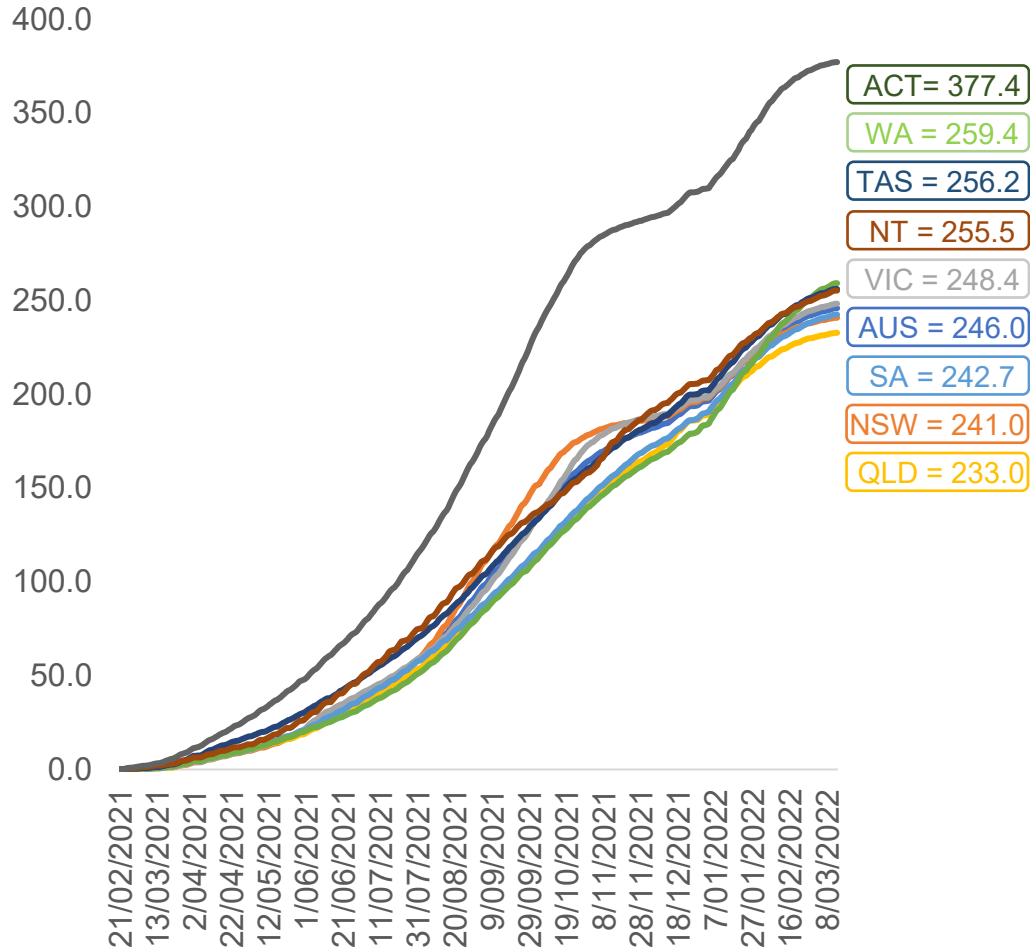
*National population will not equal sum of listed jurisdictions due to a small number of people counted in national population residing in some 'other' territories. Sum of state doses will not add to national total as some records are unable to be geocoded to a State or Territory.
Doses sourced from Australian Immunisation Register, population from ABS ERP June 2020

Vaccinations by location

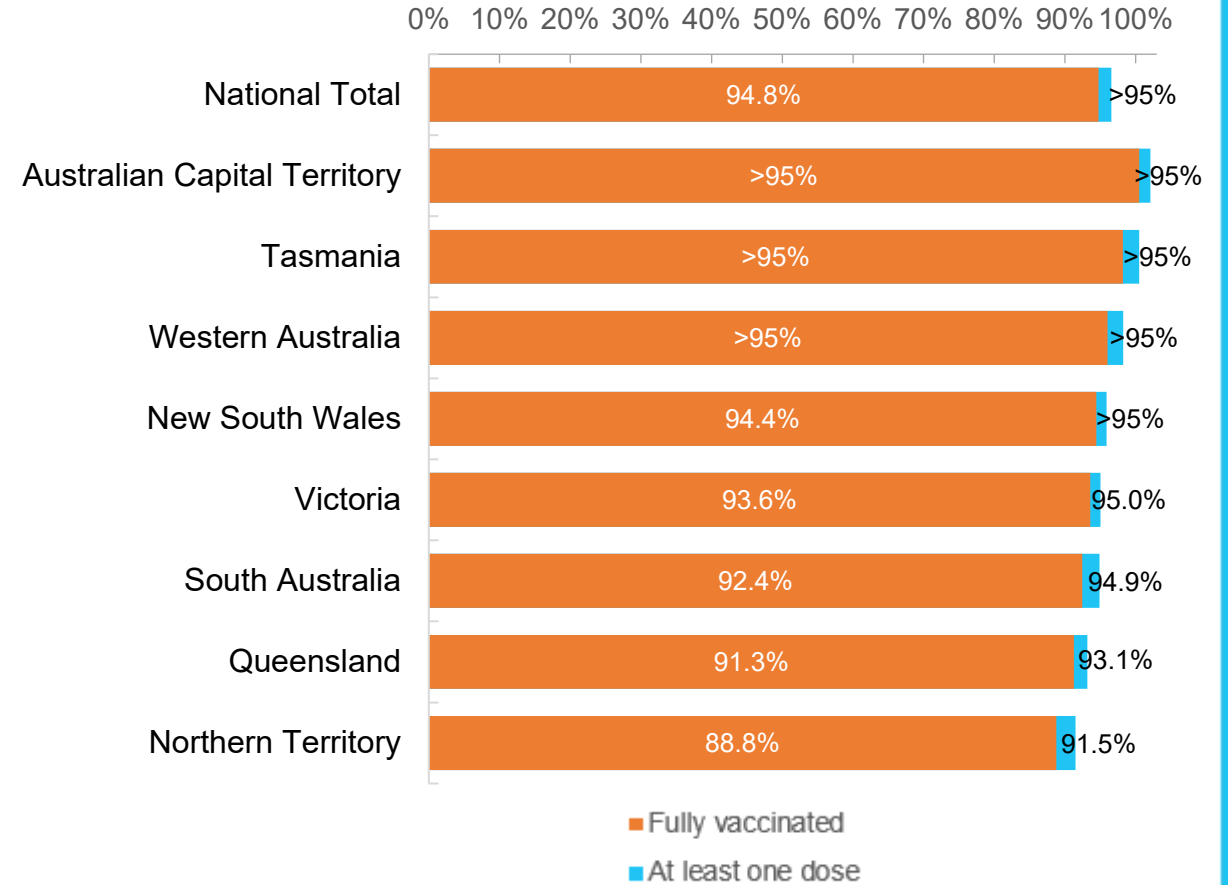
Data as at:
13 Mar 2022

Australia's COVID-19
Vaccine Roadmap

Cumulative total doses administered vs eligible state populations*



First and Second Doses by residential location



*Not an indication of percentage vaccinated, numbers will exceed 100 due to multiple doses required per person of the population. All doses are included for those aged 12 and above, and are based on vaccination provider location.

Aboriginal and Torres Strait Islander peoples

Number of people vaccinated

Data as at:
08 Mar 2022
Updated weekly

Australia's COVID-19
Vaccine Roadmap



433,759

people over the age of 16
have had at least one dose

83.6%

of people over the age of 16
have had at least one dose



409,697

people over the age of 16
are fully vaccinated

79.0%

of people over the age of 16 are
fully vaccinated



People aged 12 – 15 years

48,162

41,564

67.9%

58.6%

At least one dose

Fully vaccinated

177 Aboriginal community controlled health services (ACCHS)

0#	50	27	44	12	3	21	20
ACT	NSW	NT	QLD	SA	TAS	VIC	WA

Medicare Address State ^{##}	Individuals Dose 1	Individuals Dose 1 %	Individuals Dose 2	Individuals Dose 2 %
Australian Capital Territory	4,848	91.4%	4,721	89.0%
New South Wales	134,659	86.6%	131,311	84.4%
Northern Territory	42,080	88.9%	39,420	83.3%
Queensland	114,424	80.7%	107,675	76.0%
South Australia	19,667	79.2%	17,966	72.3%
Tasmania	14,001	88.3%	13,491	85.0%
Victoria	35,211	89.5%	34,292	87.1%
Western Australia	52,266	83.2%	46,258	73.6%
Unknown/Other Territories	16,603	64.4%	14,563	56.5%
Totals	433,759	83.6%	409,697	79.0%

Source: Australian Immunisation Register

*Identifying as Aboriginal and Torres Strait Islander is optional and the estimated population may be under reported.

**Includes all Aboriginal and Torres Strait Islander peoples who have received a vaccination, not limited to those administered in an ACCHS setting

#ACCHS in the ACT are currently operating as a Commonwealth Vaccine Clinics so not included to avoid double counting

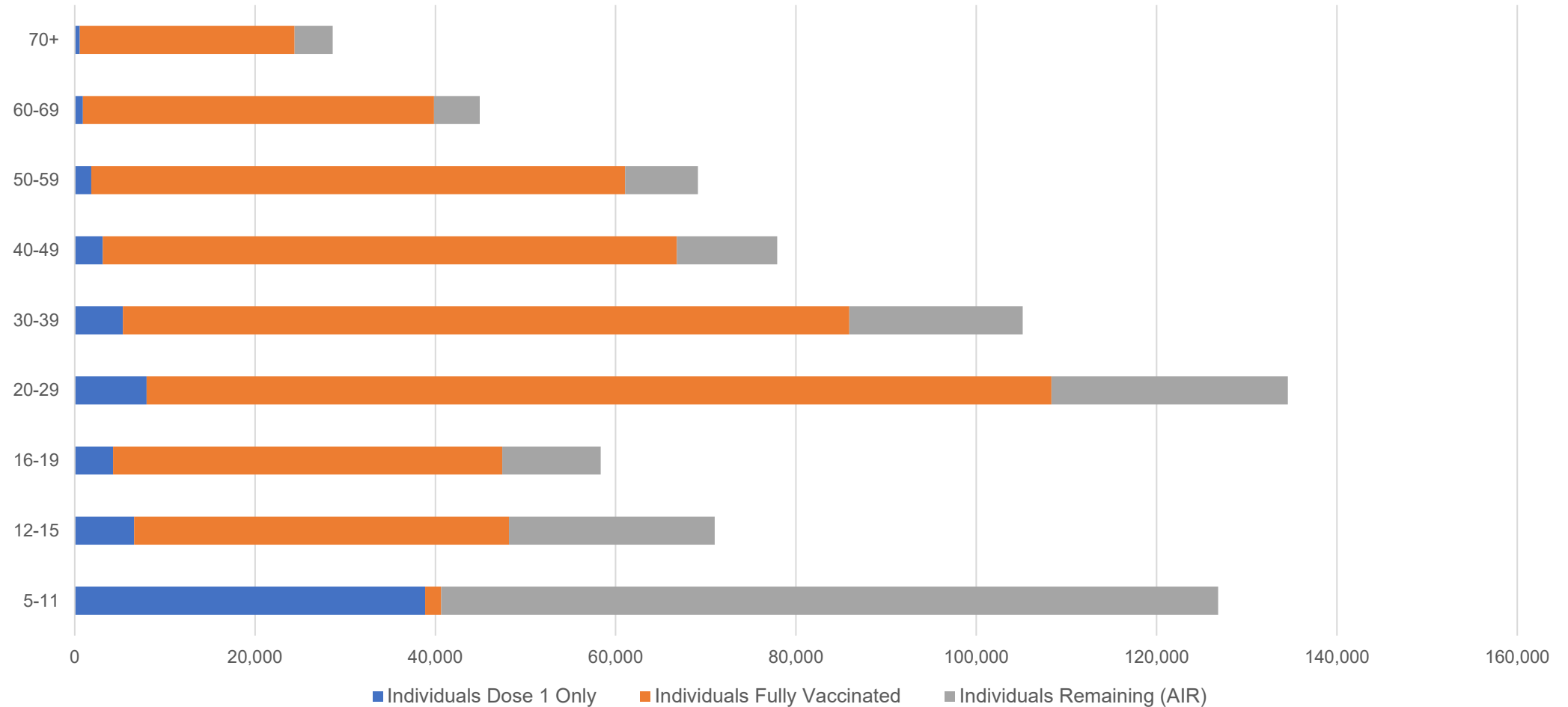
##The above table includes all identified Aboriginal and Torres Strait Islander people who are aged 16 and above by their state of residence.

Aboriginal and Torres Strait Islander peoples

Number of people vaccinated by age

Data as at:
08 Mar 2022
Updated weekly

Australia's COVID-19
Vaccine Roadmap



Source: Australian Immunisation Register

Commonwealth primary care

Data as at:
13 Mar 2022

Australia's COVID-19
Vaccine Roadmap



Primary care vaccine administration sites

5,783	127	177	3,572
GPs	CVCs	ACCHS	Pharmacies



33,505,719 total vaccine doses administered
primary care settings as at 13 March
+ 15,461 recorded in the last 24 hours

Primary care vaccinations by provider type

	Doses administered	Daily increase	7 day increase
General Practice* includes other Commonwealth	27,244,557	10,428	274,841
Pharmacy	6,261,162	5,033	141,500



258,800

doses administered to persons residing in other territories or with missing residential information

*General practice includes Commonwealth Vaccination Clinics, Aboriginal Community Health Centres, Royal Flying Doctor Service and other Commonwealth vaccination facilities

Source: Australian Immunisation Register

Commonwealth aged care and disability doses administered

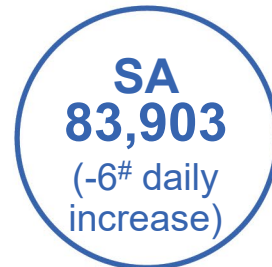
Data as at:
13 Mar 2022



1,259,200 (+ 142 last 24 hours)

Total vaccine doses administered in aged care and disability facilities as at 13 March

Number of doses administered as part of the Commonwealth aged and disability care rollout



33,545

doses administered to persons residing in other territories or with missing residential information

*Sourced from the Australian Immunisation Register. Includes all persons vaccinated at participating residential aged care, disability and related industry settings.

**State level breakdown indicates the residential location and may not align to the state in which the vaccination occurred.

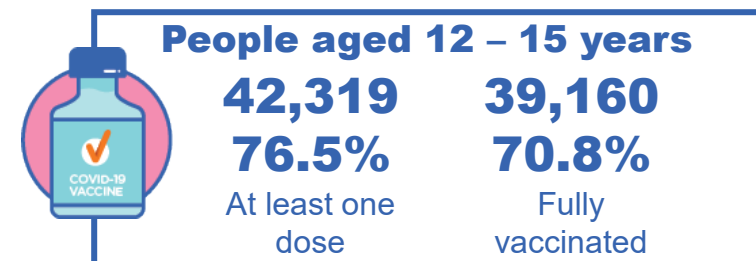
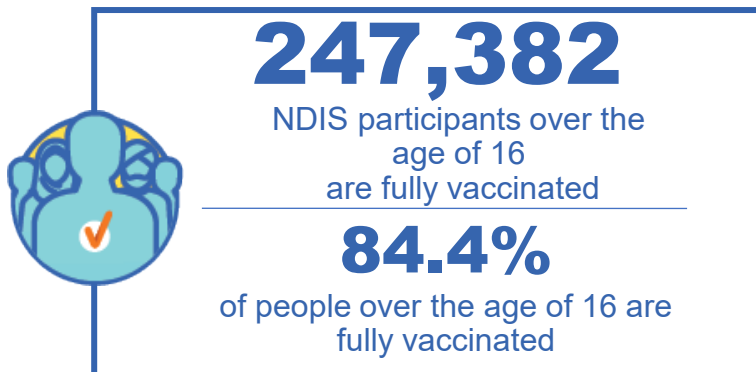
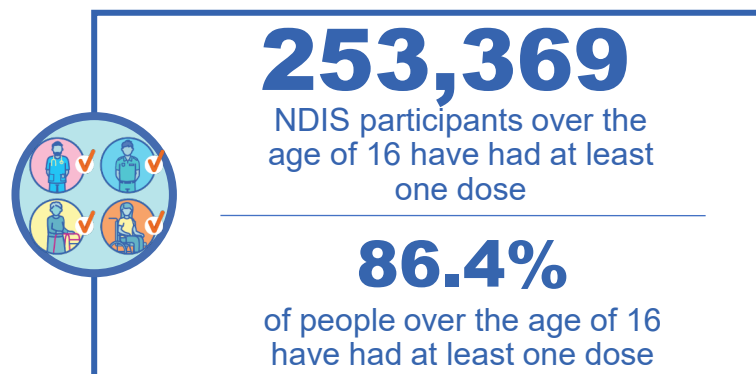
Numbers are calculated as difference in daily cumulative reported numbers to allow for historical corrections in all data sources. This can occasionally result in negative numbers, such as for VIC and SA, where historical details about doses have been updated.

Source: Australian Immunisation Register

National Disability Insurance Scheme (NDIS) reported vaccinations

Data as at:
10 March 2022
Updated weekly

Australia's COVID-19
Vaccine Roadmap



NDIS participant vaccinations

	People aged 16+ with at least one dose	People aged 16+ fully vaccinated	% People aged 16+ with at least one dose	% People aged 16+ fully vaccinated
ACT	4,815	4,744	88.8%	87.5%
NSW	78,108	76,761	87.1%	85.6%
NT	2,200	2,106	77.1%	73.8%
QLD	49,751	48,519	84.6%	82.5%
SA	20,615	19,943	84.0%	81.3%
TAS	6,345	6,147	86.3%	83.6%
VIC	67,537	66,176	87.7%	85.9%
WA	23,998	22,986	87.2%	83.5%
National	253,369	247,382	86.4%	84.4%

Source: Linkage between National Disability Insurance Agency data and the Australian Immunisation Register. Total NDIS participant numbers as at 28th February. Australian Immunisation Register data as at 9 March. Includes all participants regardless of residence type.

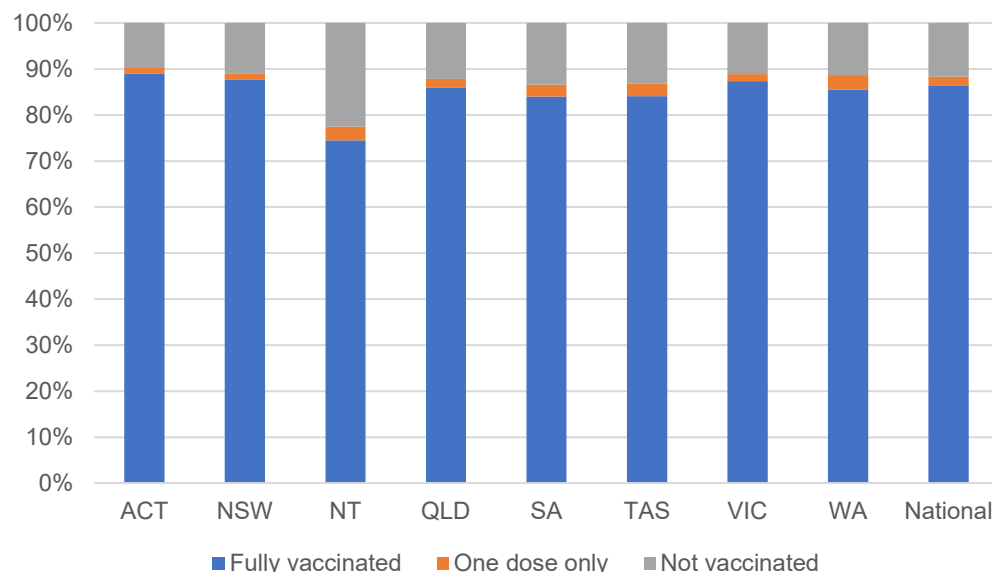
National Disability Insurance Scheme (NDIS) reported vaccinations

Data as at:
10 March 2022
Updated Weekly

Australia's COVID-19
Vaccine Roadmap

NATIONAL	Total people with at least one dose	People fully vaccinated	Total number of individuals in cohort	% People with at least one dose	% People fully vaccinated
NDIS participants living in disability accommodation	20,598	20,191	23,352	88.2%	86.5%

NDIS participants in disability and aged care accommodation



Source: Linkage between National Disability Insurance Agency data and the Australian Immunisation Register. Includes participants residing in disability accommodation only.

Source: Total NDIS participant numbers as at 28th February. Participant data as at 9 March. Australian Immunisation Register data as at 9 March. Worker data as at 10 March.

NDIS workforce vaccinations

	NDIS workers with at least one dose	NDIS workers fully vaccinated	% NDIS workers with at least one dose	% NDIS workers fully vaccinated
NSW	120,178	117,760	97.9%	96.0%
VIC	116,128	108,193	98.2%	91.5%
QLD	68,810	67,813	97.3%	95.9%
WA	32,680	30,259	98.4%	91.1%
SA	35,209	32,003	98.1%	89.1%
TAS	10,778	10,476	99.6%	96.8%
ACT	3,550	3,519	99.6%	98.8%
NT	3,481	3,288	99.7%	94.1%
TOTAL	390,814	373,311	98.0%	93.6%

Source: the NDIS Commission has established a requirement for registered NDIS providers who provide intensive disability support services to report on the vaccination status of workers they employ, or otherwise engage, to deliver NDIS-funded supports and services, and who are required to be vaccinated in accordance with in-force state and territory public health orders. The statistics reflect data reported to the NDIS Commission by registered NDIS providers and should be considered indicative and subject to change

Note: Some registered NDIS providers are yet to report on the vaccination status of their workforce. The NDIS Commission is working with those providers around reporting requirements.

Remaining workers not included include those exempt from vaccination requirements, workers whose vaccination status is not yet verified by the provider (such as workers on leave) and provider reporting anomalies.

Residential aged care vaccination rollout

Residential aged care facilities status

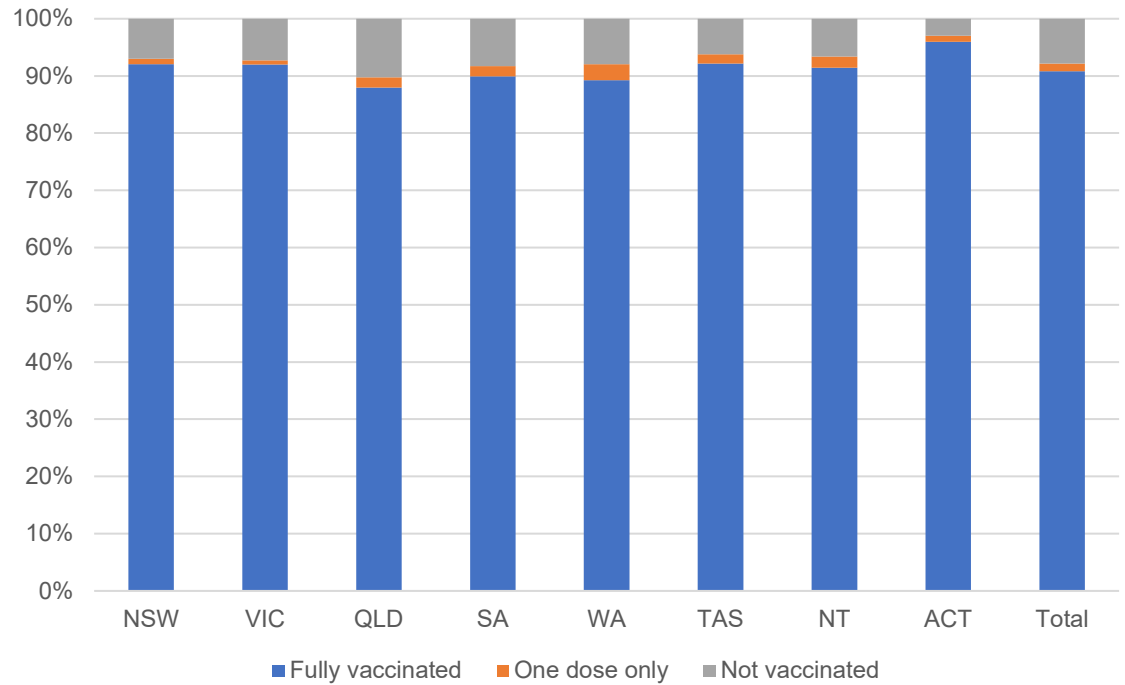
100%
Commonwealth facilities visited (2,537 planned sites)

173,652
People fully vaccinated

176,173
People with at least one dose

Data as at:
10 Mar 2022
Updated weekly

Aged care resident vaccinations



Aged care worker vaccinations

Jurisdictions	Total workers with at least one dose	Workers fully vaccinated	% Workers with at least one dose	% Workers fully vaccinated
NSW	78,694	78,682	98.4%	98.4%
VIC	68,396	68,395	98.1%	98.1%
QLD	48,200	48,198	98.0%	98.0%
SA	26,738	26,714	98.8%	98.7%
WA	23,879	23,877	99.7%	99.7%
TAS	7,799	7,799	99.9%	99.9%
NT	870	870	99.9%	99.9%
ACT	3,063	3,063	100.0%	100.0%
Total	257,639	257,598	98.5%	98.5%

Source: My Aged Care Portal vaccination progress

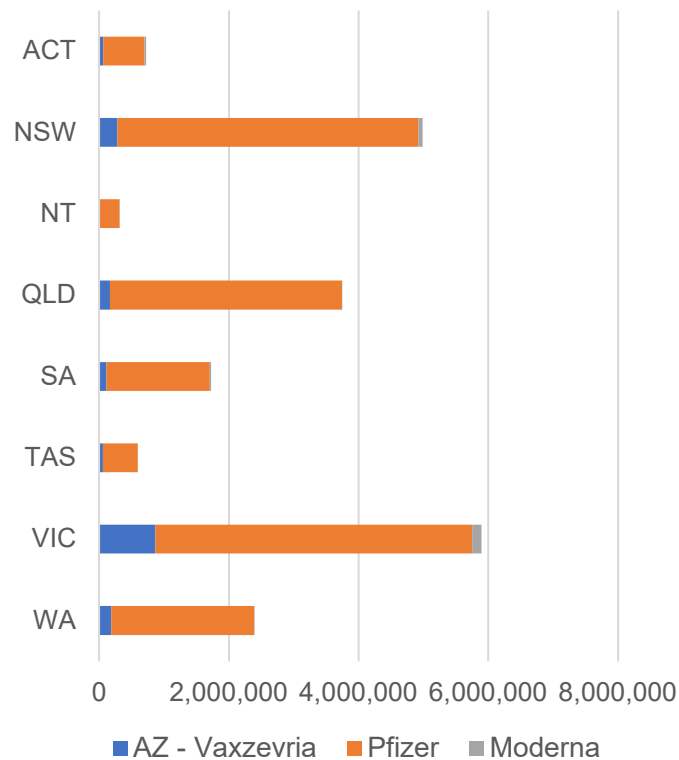
*Status updates are provided by facilities at least once per week. Reporting is updated Monday to Friday to encompass different facility updates being made on different days.

Data is sourced directly from Aged Care Service Providers and is not drawn or closely aligned with data from AIR due to inconsistencies and potential lags in uploading of records.

Data as at:
13 Mar 2022

Jurisdiction administered

Total vaccine doses administered in State and Territory clinics as at 13 March



20,384,196 total vaccine doses administered in State and Territory clinics as at 13 March
 + **18,991** recorded in the last 24 hours
 + **148,569** recorded in the last 7 days

NSW
4,987,131
 (+2,345 daily increase)

VIC
5,898,510
 (+4,848 daily increase)

QLD
3,746,349
 (+3,414 daily increase)

WA
2,395,192
 (+2,175 daily increase)

TAS
593,830
 (+2,159 daily increase)

SA
1,726,896
 (+2,302 daily increase)

ACT
722,170
 (+1,422 daily increase)

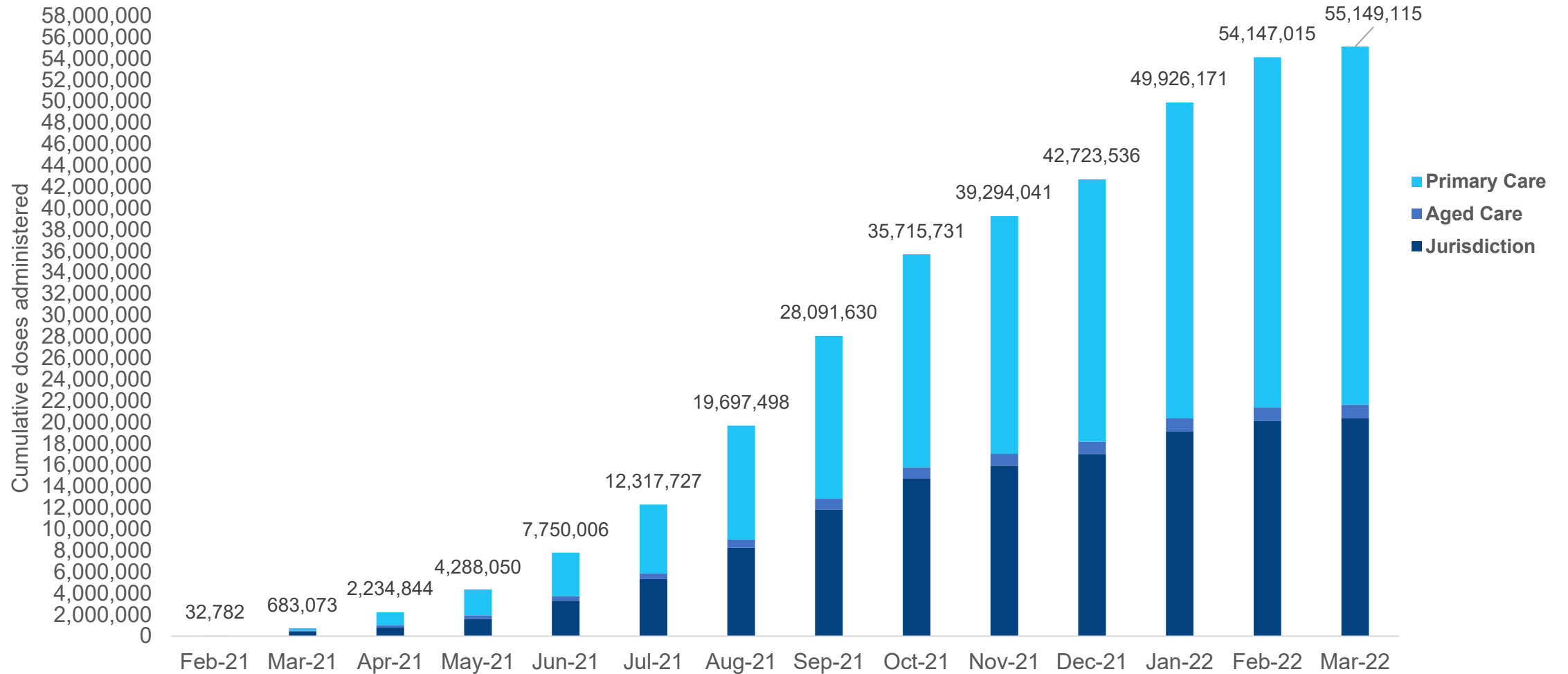
NT
314,118
 (+326 daily increase)

*Sourced from the Australian Immunisation Register. Numbers are calculated as difference in daily cumulative reported numbers to allow for historical corrections.

Source: Australian Immunisation Register

Data as at:
13 Mar 2022

Cumulative doses administered by channel



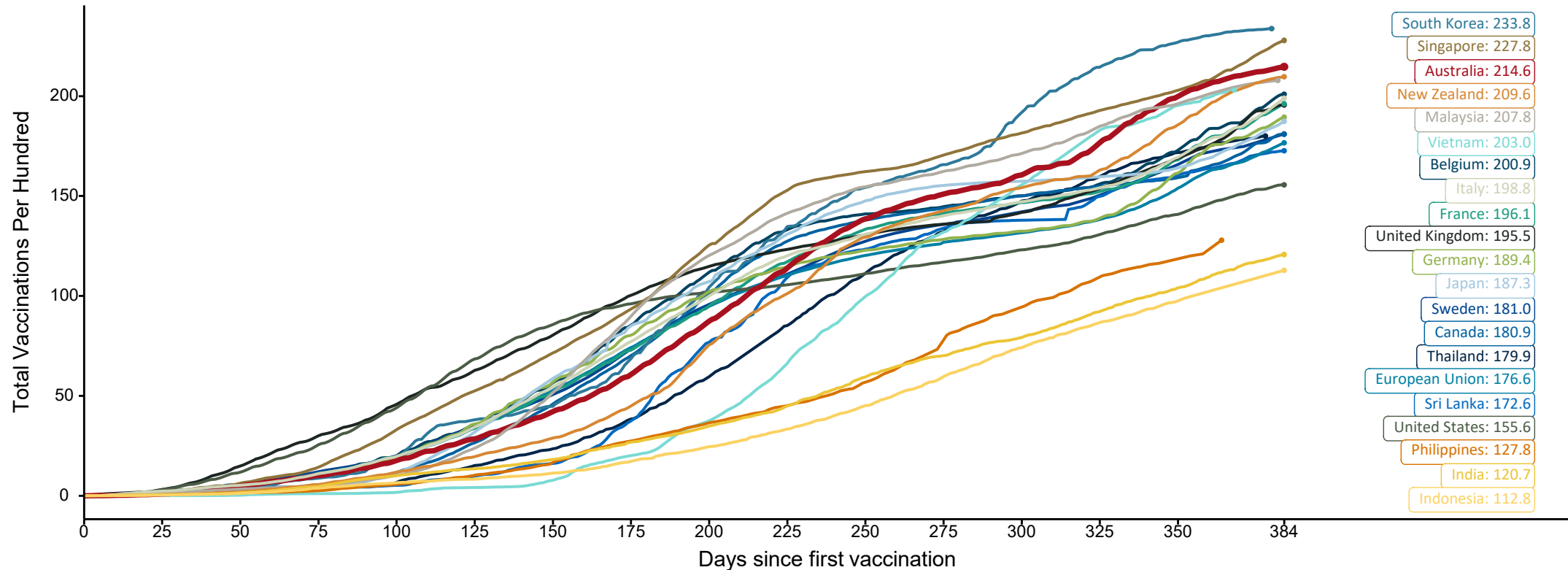
Source: Australian Immunisation Register

Doses at equivalent stages of rollout (Day 384)

Data as at:
13 Mar 2022

The x-axis is truncated at the length of Australia's vaccination program. Countries with intermittent reporting have had their doses per 100 imputed to Australia's current stage of rollout. Israel excluded as it is beyond scale of the graph

Cumulative doses administered (13 Mar): **55,149,115**

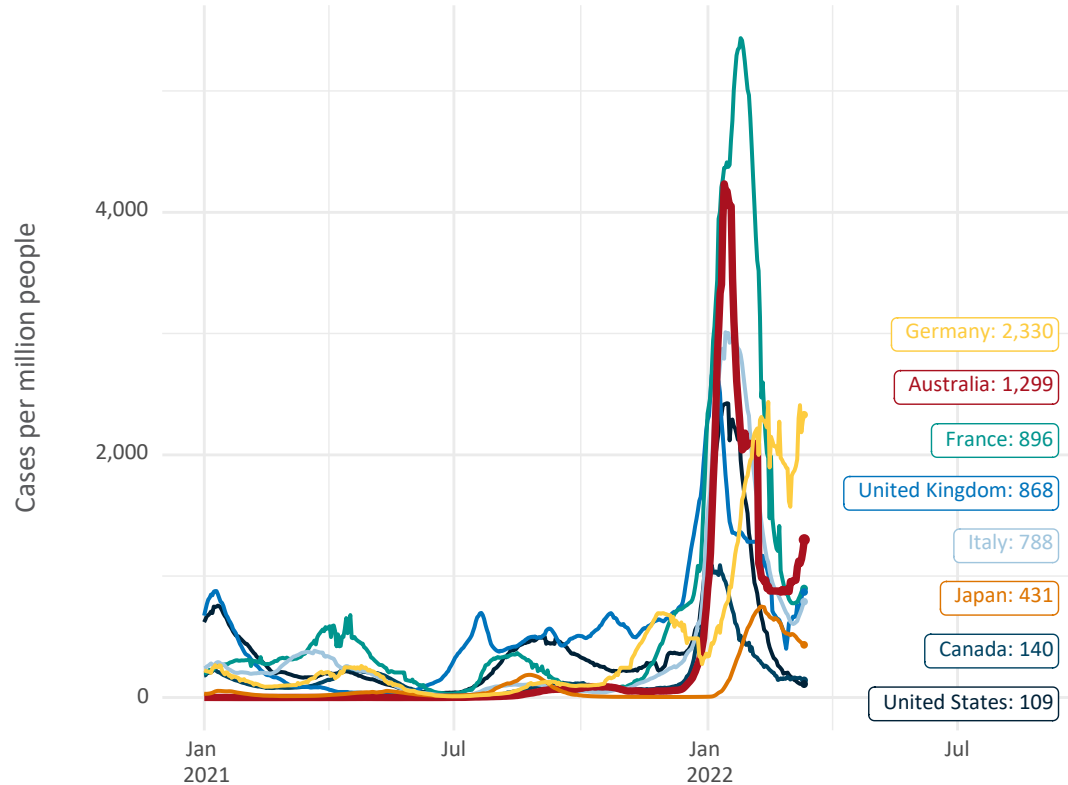


Note: From 11 January 2022, data for Australia includes all doses administered to people 5 and over. Prior to 11 January, data was for 12 and over.
Source: Department of Health (Australia), Our World in Data (international)
Latest data: 13 March

Data as at:
13 Mar 2022

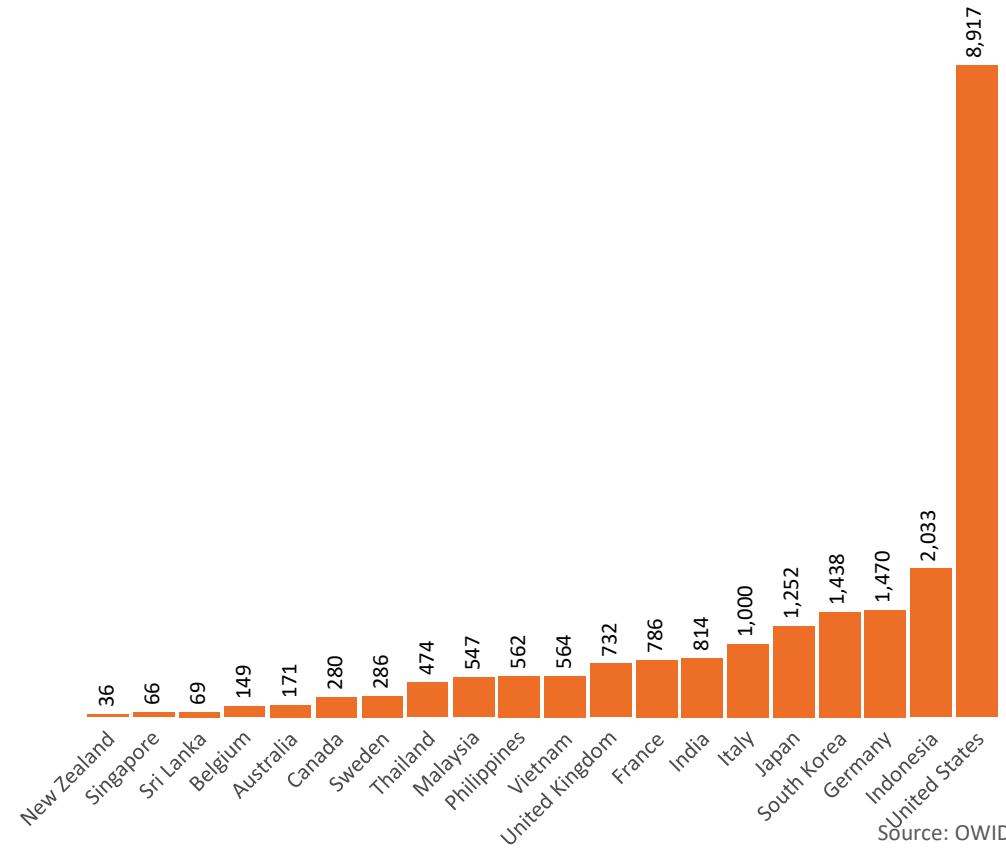
International data – COVID-19

New daily cases per million in 2021, Australia and G7 countries
Smoothed - 7 day average



Source: OWID
Data downloaded: 14 Mar 2022 07:14
Latest data: 12 Mar 2022

COVID-19 deaths in past 7 days - Australia and select countries



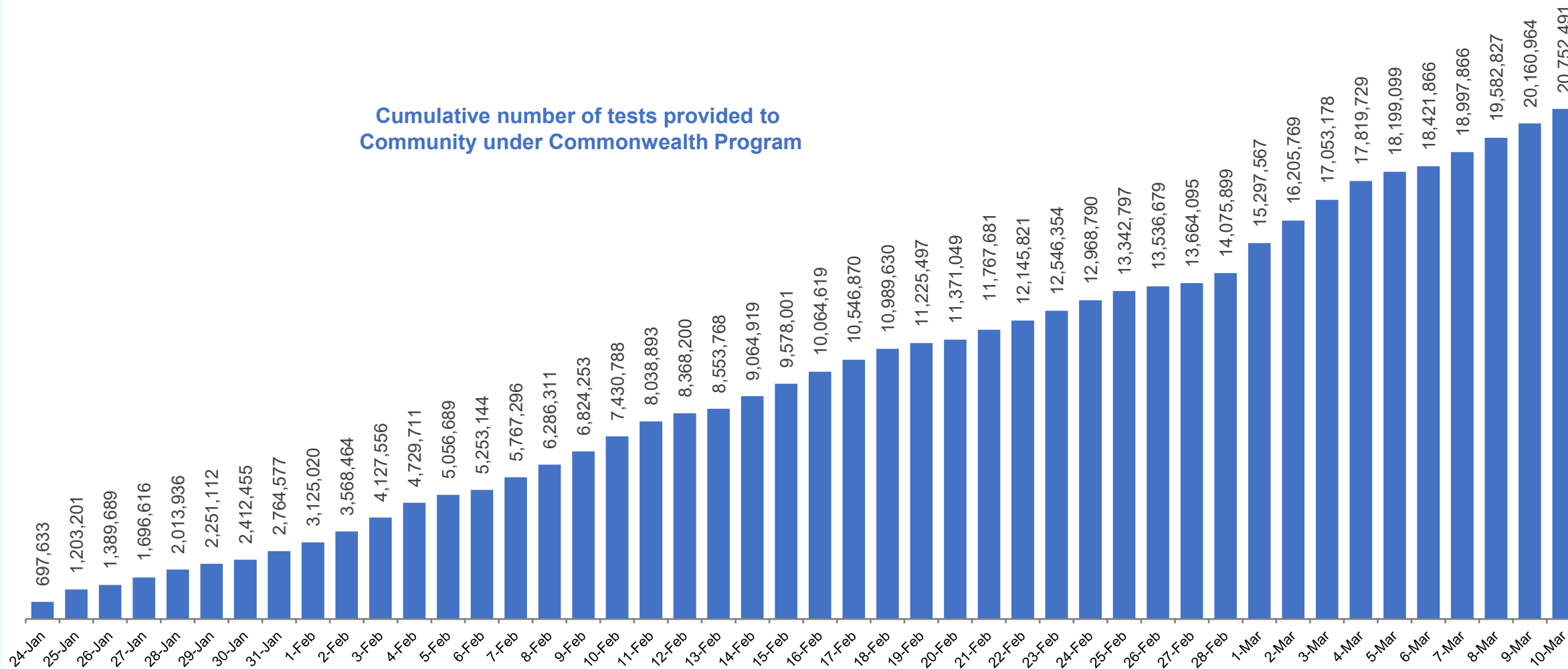
Source: OWID
Data downloaded: 14 Mar 2022 07:14
Latest data: 12 Mar 2022

Concessional rapid antigen test program

5,602 pharmacies have delivered over **20.7 million rapid antigen tests** to more than **3.5m eligible concession card holders** under the Government's concessional rapid antigen test program.


**Data as at
11 Mar 2022**

Cumulative number of tests provided to
Community under Commonwealth Program



Pandemic Response Payments

Data as at midnight: 6 Mar 2022
Updated weekly



2.38 million
People have received at least one COVID Disaster Payment (including ISP200)

\$13.75 billion
Paid Out as at 6 Mar 2022

7.04 million
Claims granted across three different payments



92%
of Claims Received Digitally



COVID Disaster Payment:	5.89 million claims received - 2.19 million individuals paid a total of \$12.59 billion.
\$200 Income Support Payment:	353,000 claims received - 183,000 individuals paid a total of \$268.9 million.
Pandemic Leave Disaster Payment:	1,214,000 claims received - 800,000 individuals paid a total of \$895.0 million.



THREE PAYMENTS AVAILABLE

COVID Disaster Payment

assisting during a lockdown event in a Commonwealth hotspot.

Income Support Payment \$200

for income support recipients who lost at least 8 hours of work.

Pandemic Leave Disaster Payment

for those who have to self-isolate, quarantine or care.

For more information visit: servicesaustralia.gov.au

COVID-19 DISASTER PAYMENTS

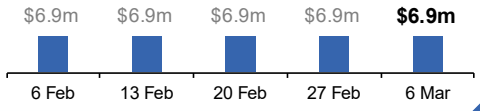
Northern Territory
Lockdown (#3) from 16 Nov to 22 Nov
Claiming period ended 27 Dec

7,500 people have received at least one COVID Disaster Payment.

\$6.9m paid out as at 6 Mar 2022.

Nil paid in initial payments in the week ending 6 Mar 2022.

Cumulative payments made by Territory since activation on 25 Aug 2021.



Date	Cumulative Payments (\$m)
6 Feb	\$6.9m
13 Feb	\$6.9m
20 Feb	\$6.9m
27 Feb	\$6.9m
6 Mar	\$6.9m

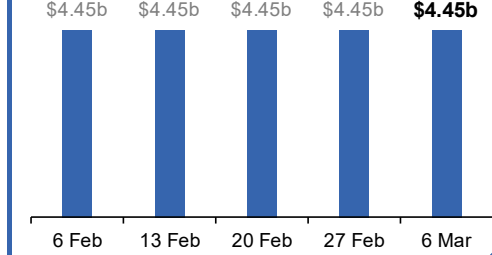
Victoria
Lockdown (#6) from 6 Aug to 28 Oct
Claiming period ended 9 Dec

745,000 people have received at least one COVID Disaster Payment.

\$4.45b paid out as at 6 Mar 2022.

Nil paid in initial and reoccurring payments in the week ending 6 Mar 2022.

Cumulative payments made by State since activation on 8 Jun 2021.



Date	Cumulative Payments (\$b)
6 Feb	\$4.45b
13 Feb	\$4.45b
20 Feb	\$4.45b
27 Feb	\$4.45b
6 Mar	\$4.45b

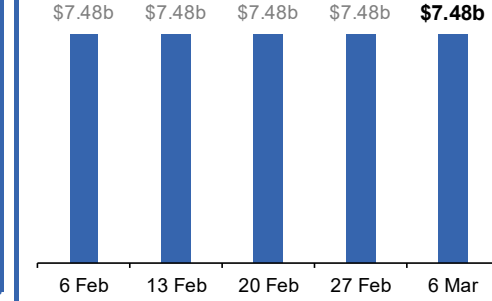
New South Wales
Lockdown from 24 Jun to 10 Oct
Claiming period ended 27 Nov

1.08m people have received at least one COVID Disaster Payment.

\$7.48b paid out as at 6 Mar 2022.

Nil paid in initial and reoccurring payments in the week ending 6 Mar 2022.

Cumulative payments made by State since activation on 1 Jul 2021.



Date	Cumulative Payments (\$b)
6 Feb	\$7.48b
13 Feb	\$7.48b
20 Feb	\$7.48b
27 Feb	\$7.48b
6 Mar	\$7.48b

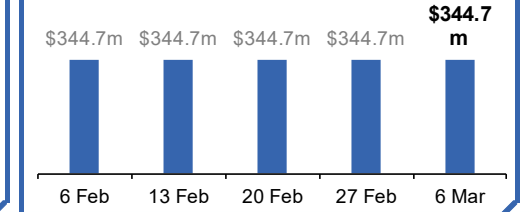
Australian Capital Territory
Lockdown from 12 Aug to 14 Oct
Claiming period ended 25 Nov

65,000 people have received at least one COVID Disaster Payment.

\$344.7m paid out as at 6 Mar 2022.

Nil paid in initial and reoccurring payments in the week ending 6 Mar 2022.

Cumulative payments made by Territory since activation on 20 Aug 2021.



Date	Cumulative Payments (\$m)
6 Feb	\$344.7m
13 Feb	\$344.7m
20 Feb	\$344.7m
27 Feb	\$344.7m
6 Mar	\$344.7m

Pandemic Response Payments (continued)

Data as at midnight: 6 Mar 2022
Updated weekly

COVID-19 DISASTER PAYMENTS

Tasmania

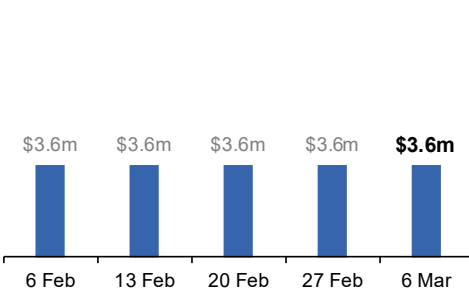
Lockdown from 15 Oct to 18 Oct
Claiming period ended 12 Nov

6,900 people have received at least one COVID Disaster Payment.

\$3.6m paid out as at 6 Mar 2022.

Nil paid in initial and reoccurring payments in the week ending 6 Mar 2022.

Cumulative payments made by State since activation on 22 Oct 2021.



Queensland

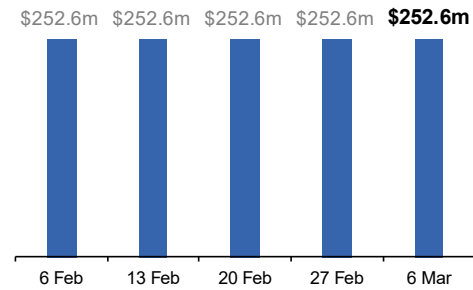
Lockdown from 31 Jul to 11 Aug
Claiming period ended 28 Aug

196,000 people have received at least one COVID Disaster Payment.

\$252.6m paid out as at 6 Mar 2022.

Nil paid in initial and reoccurring payments in the week ending 6 Mar 2022.

Cumulative payments made by State since activation on 7 Aug 2021.



South Australia

Lockdown from 21 to 27 Jul
Claiming period ended 17 Aug

86,000 people have received at least one COVID Disaster Payment.

\$48.2m paid out as at 6 Mar 2022.

Nil paid in initial and reoccurring payments in the week ending 6 Mar 2022.

Cumulative payments made by State since activation on 28 Jul 2021.

