



**Australian Government**  
**Operation COVID Shield**

# COVID-19 Vaccine Roll-out

12 March 2022

Data as at:  
11 Mar 2022

## Total vaccine doses



**55,042,007** total vaccine doses administered nationally as at 11 March  
**+107,936** recorded in the last 24 hours



**19,905,014**

people have had at least one dose

**>95%**

of people over the age of 16 have had at least one dose



**19,532,949**

people are fully vaccinated

**94.7%**

of people over the age of 16 are fully vaccinated



**12,162,575**

people over the age of 16 who have received more than two doses

**NSW**  
**17,143,966**  
(+29,057 daily increase)

**VIC**  
**14,541,141**  
(+27,038 daily increase)

**QLD**  
**10,439,876**  
(+18,190 daily increase)

**WA**  
**5,962,859**  
(+17,136 daily increase)

**TAS**  
**1,226,524**  
(+2,362 daily increase)

**SA**  
**3,782,941**  
(+7,517 daily increase)

**ACT**  
**1,409,850**  
(+5,081 daily increase)

**NT**  
**534,850**  
(+1,555 daily increase)

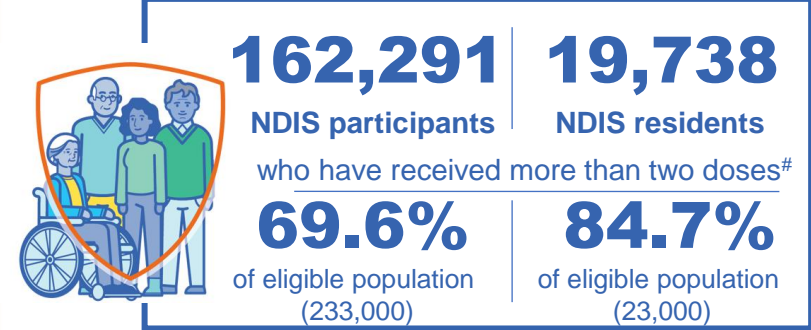
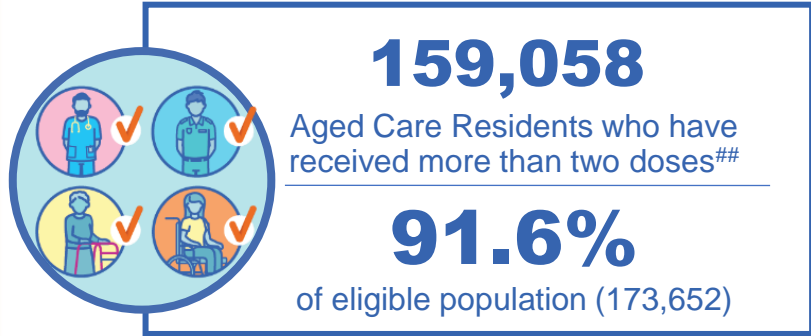
\*Administration state breakdown indicates state in which a vaccine was administered

\*\*Overall dose count includes instances of more than two doses per person in a small number of cases.

Source: Australian Immunisation Register

# Booster Vaccinations

Data as at:  
11 Mar 2022



**12,162,575** total people who have received more than two doses nationally

**+64,075** recorded in the last 24 hours

**65.5%** of people who are eligible (18,559,106) have received more than two doses

NSW	People	% of Eligible
Cumulative	3,742,111	61.0%
Daily increase	17,332	

VIC	People	% of Eligible
Cumulative	3,311,276	66.4%
Daily increase	16,644	

QLD	People	% of Eligible
Cumulative	2,098,808	61.7%
Daily increase	10,093	

WA	People	% of Eligible
Cumulative	1,440,062	84.1%
Daily increase	11,001	

SA	People	% of Eligible
Cumulative	861,420	70.2%
Daily increase	4,588	

TAS	People	% of Eligible
Cumulative	271,365	67.8%
Daily increase	1,649	

ACT	People	% of Eligible
Cumulative	247,897	72.4%
Daily increase	890	

NT	People	% of Eligible
Cumulative	100,634	64.9%
Daily increase	1,141	

\*People may belong to multiple groups and could be represented in the above breakdowns multiple times.

# NDIS participants data as at 10 March 2022.

## Aged Care Residents data as at 11 March 2022.

Source: Australian Immunisation Register

**89,002**

doses administered to persons residing in other territories or with missing residential information

Data as at:  
11 Mar 2022

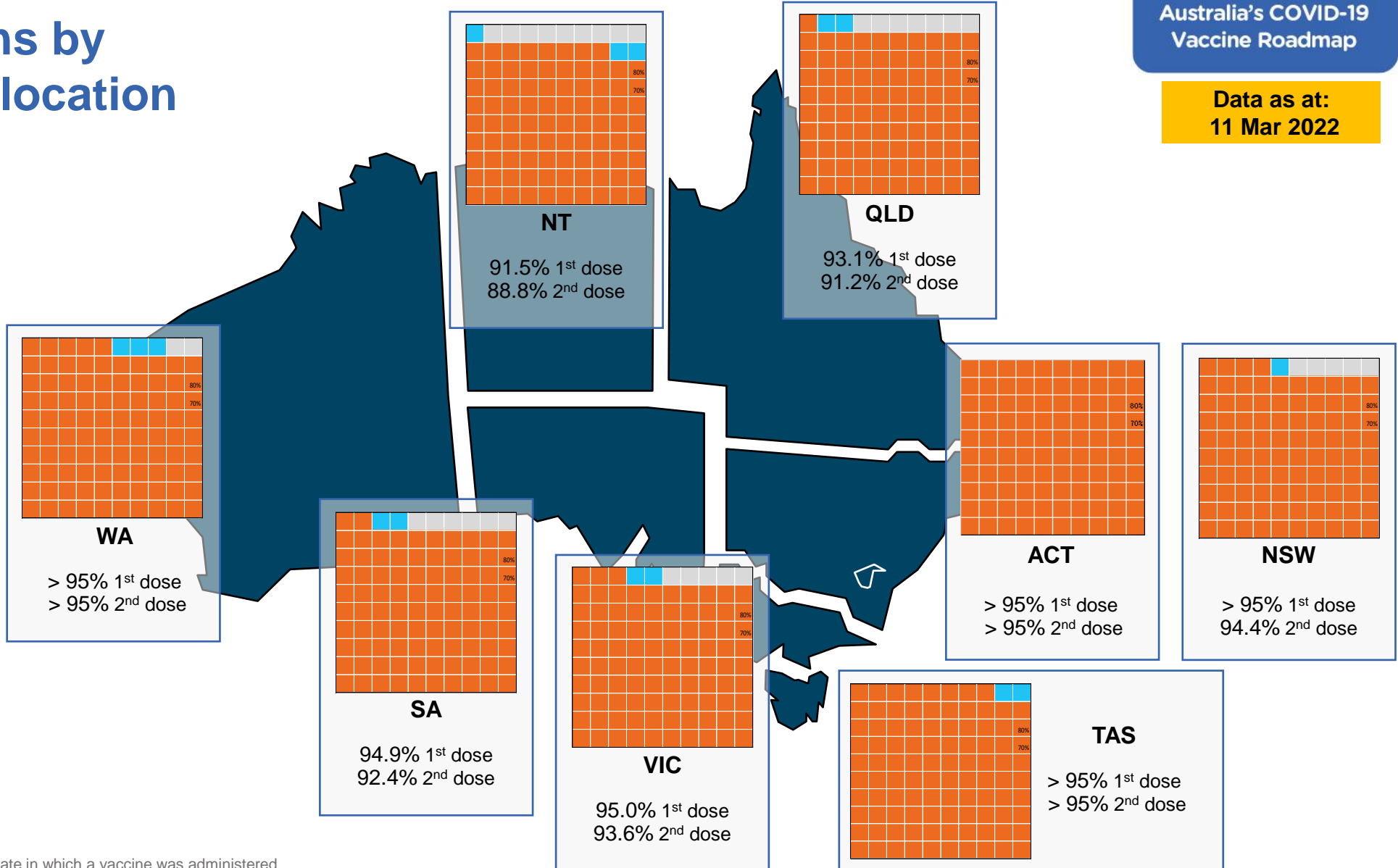
# Vaccinations by residential location

## First doses

Age	Today	4 weeks ago	8 weeks ago
16+	>95%	>95%	>95%
50+	>95%	>95%	>95%
70+	>95%	>95%	>95%

## Fully vaccinated

Age	Today	4 weeks ago	8 weeks ago
16+	94.7%	94.2%	92.9%
50+	>95%	>95%	>95%
70+	>95%	>95%	>95%



\*Residential state may differ from the state in which a vaccine was administered

# Commonwealth and Jurisdiction vaccine doses administered

Data as at:  
11 Mar 2022



**55,042,007** total vaccine doses administered nationally as at 11 March

**+ 107,936** recorded in the last 24 hours



**20,335,116**

doses administered by state and territory facilities

**+ 23,937**

recorded in the last 24 hours

NSW	Jurisdictions	Commonwealth
Cumulative	4,978,998	12,164,968
Daily increase	4,244	24,813

TAS	Jurisdictions	Commonwealth
Cumulative	590,671	635,853
Daily increase	577	1,785

VIC	Jurisdictions	Commonwealth
Cumulative	5,885,277	8,655,864
Daily increase	6,142	20,896

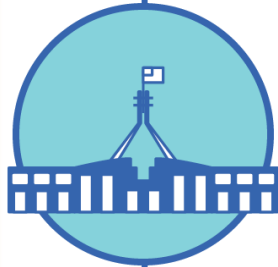
SA	Jurisdictions	Commonwealth
Cumulative	1,721,434	2,061,507
Daily increase	2,531	4,986

QLD	Jurisdictions	Commonwealth
Cumulative	3,736,243	6,703,633
Daily increase	4,052	14,138

ACT	Jurisdictions	Commonwealth
Cumulative	720,110	689,740
Daily increase	1,856	3,225

WA	Jurisdictions	Commonwealth
Cumulative	2,389,120	3,573,739
Daily increase	3,639	13,497

NT	Jurisdictions	Commonwealth
Cumulative	313,263	221,587
Daily increase	896	659



**34,706,891**

doses administered by commonwealth facilities

**+ 83,999**

recorded in the last 24 hours

**33,448,027** total vaccine doses administered in primary care settings

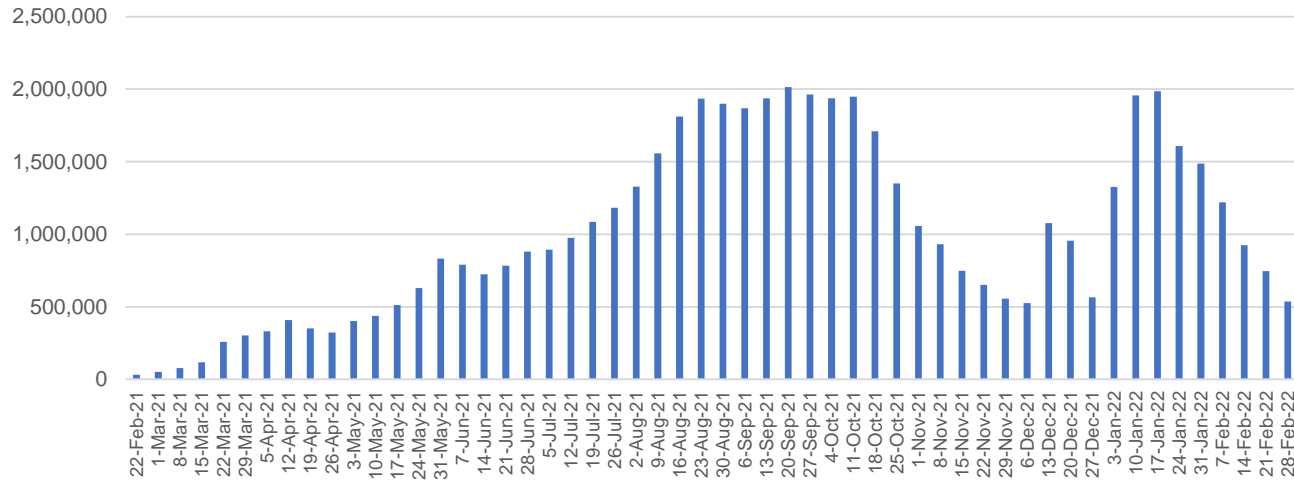
**1,258,864** total vaccine doses administered in aged care and disability settings

# Vaccine milestone charts

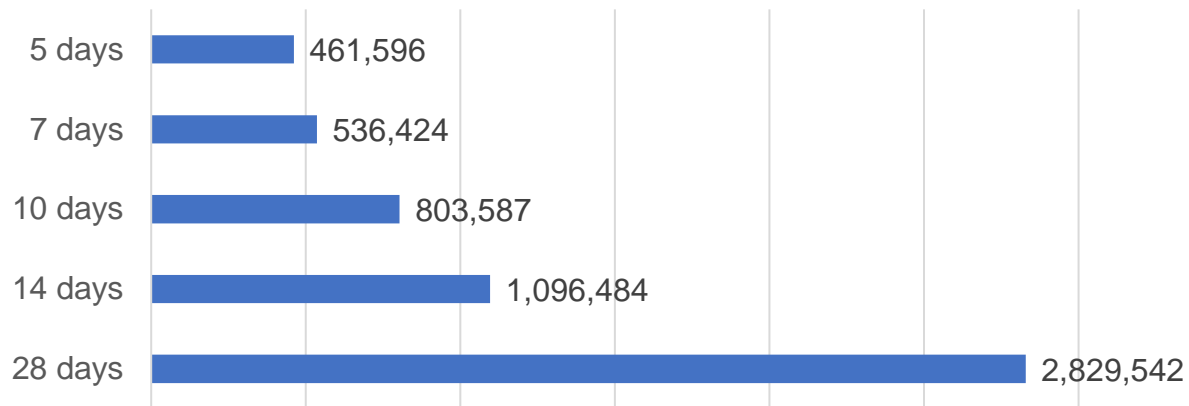
Data as at:  
11 Mar 2022

Australia's COVID-19  
Vaccine Roadmap

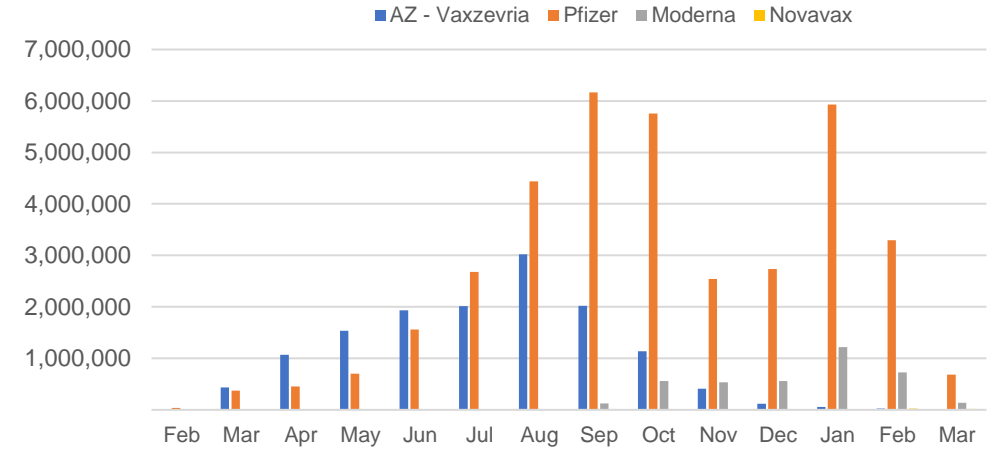
Doses Administered by Week



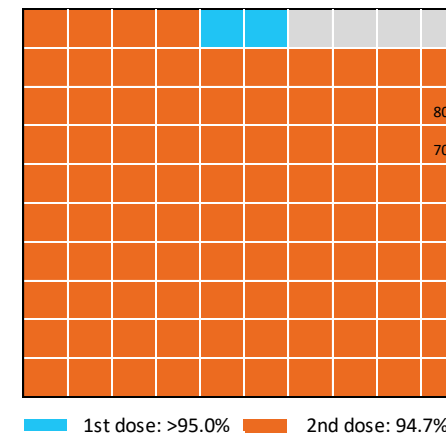
Doses Reported



Doses by administration month and vaccine type



Eligible population percentage coverage



\*Each square represents 1% of the national population. Squares are filled as milestones are achieved.

\*Sourced from the Australian Immunisation Register.

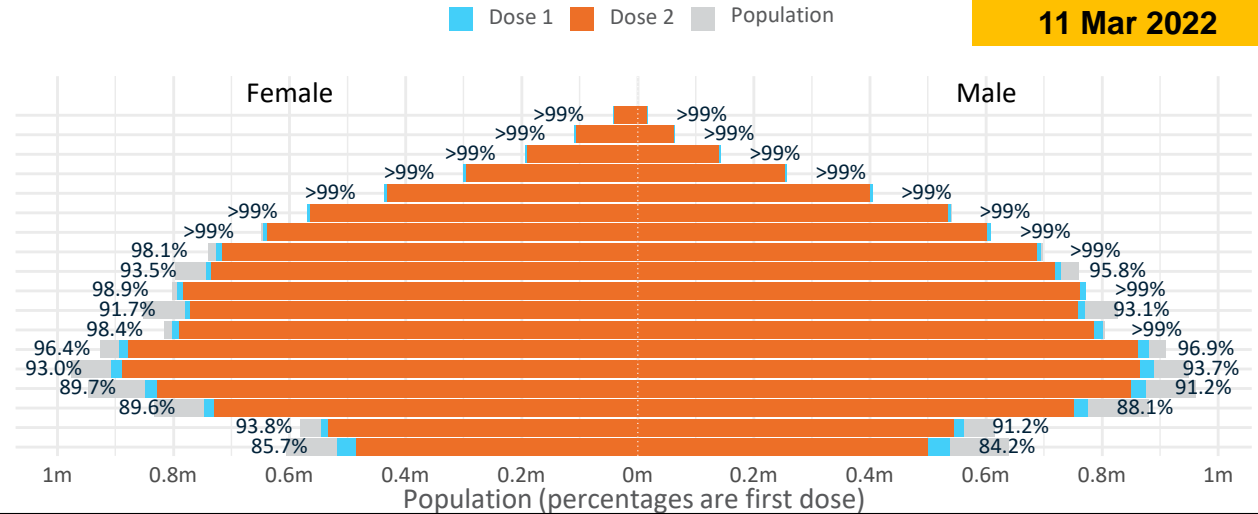
# Doses by age and sex

First and second doses by age and sex

	16+	50+	12-15	5-11
Dose 1	96.53% (19,905,014 doses / 20,619,959 people)	>99% (8,795,639 doses / 8,749,703 people)	84.92% (1,056,388 doses / 1,243,990 people)	51.07% (1,162,780 doses / 2,276,638 people)
Dose 2	94.73% (19,532,949 doses / 20,619,959 people)	>99% (8,676,292 doses / 8,749,703 people)	79.25% (985,897 doses / 1,243,990 people)	6.28% (143,017 doses / 2,276,638 people)

Data as at:  
11 Mar 2022

Age	Dose 1	Dose 2
95+	59,218 (>99%)	55,785 (>99%)
90-94	173,231 (>99%)	167,261 (>99%)
85-89	338,148 (>99%)	330,507 (>99%)
80-84	556,662 (>99%)	548,547 (>99%)
75-79	840,420 (>99%)	830,997 (>99%)
70-74	1,110,186 (>99%)	1,097,986 (>99%)
65-69	1,255,754 (>99%)	1,240,085 (98.6%)
60-64	1,421,878 (99.0%)	1,403,796 (97.7%)
55-59	1,473,786 (94.7%)	1,455,063 (93.5%)
50-54	1,566,356 (>99%)	1,546,265 (98.8%)
45-49	1,551,246 (92.5%)	1,529,083 (91.2%)
40-44	1,605,619 (>99%)	1,577,477 (97.4%)
35-39	1,778,060 (96.9%)	1,741,635 (94.9%)
30-34	1,804,347 (93.8%)	1,758,381 (91.4%)
25-29	1,735,288 (91.0%)	1,684,869 (88.4%)
20-24	1,527,968 (89.2%)	1,485,936 (86.8%)
16-19	1,106,847 (92.6%)	1,079,276 (90.3%)
12-15	1,056,388 (84.9%)	985,897 (79.3%)



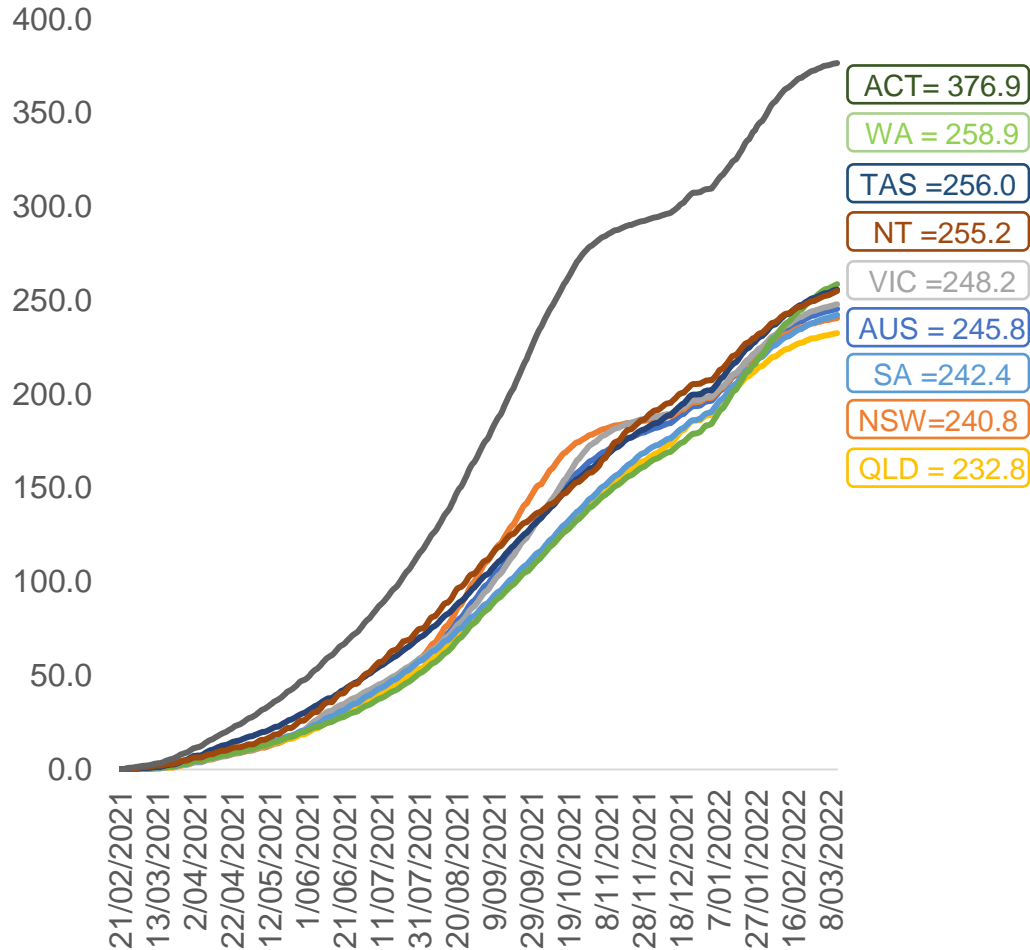
	AUS	ACT	NSW	NT	QLD	SA	TAS	VIC	WA
16 and over - dose 1	19,905,014	351,103	6,295,495	174,287	3,829,832	1,366,752	442,395	5,136,397	2,076,483
16 and over - dose 2	19,532,949	345,695	6,199,513	169,136	3,751,884	1,331,270	432,138	5,059,082	2,029,000
16 and over - population	20,619,959*	344,037	6,565,651	190,571	4,112,707	1,440,400	440,172	5,407,574	2,114,978
16 and over % with dose 1	96.53%	>99%	95.89%	91.46%	93.12%	94.89%	>99%	94.99%	98.18%
16 and over % with dose 2	94.73%	>99%	94.42%	88.75%	91.23%	92.42%	98.17%	93.56%	95.93%
5 to 11 - dose 1	1,162,780	31,355	345,951	12,851	205,432	82,708	27,991	318,946	130,466
5 to 11 - dose 2	143,017	5,227	48,150	1,332	27,346	8,238	3,134	37,871	11,102
5 to 11 - population	2,276,638	39,789	716,460	24,750	478,731	148,816	45,033	578,499	244,154
5 to 11 % with dose 1	51.07%	78.80%	48.29%	51.92%	42.91%	55.58%	62.16%	55.13%	53.44%
5 to 11 % with dose 2	6.28%	13.14%	6.72%	5.38%	5.71%	5.54%	6.96%	6.55%	4.55%
12 to 15 - dose 1	1,056,388	20,098	326,337	10,921	207,952	68,453	22,914	276,294	114,303
12 to 15 - dose 2	985,897	19,155	308,648	9,653	192,039	63,691	21,495	261,354	102,015
12 to 15 - population	1,243,990	19,693	390,330	13,060	270,146	82,747	26,308	308,611	132,869
12 to 15 % with dose 1	84.92%	>99%	83.61%	83.62%	76.98%	82.73%	87.10%	89.53%	86.03%
12 to 15 % with dose 2	79.25%	97.27%	79.07%	73.91%	71.09%	76.97%	81.71%	84.69%	76.78%

\*National population will not equal sum of listed jurisdictions due to a small number of people counted in national population residing in some 'other' territories. Sum of state doses will not add to national total as some records are unable to be geocoded to a State or Territory.  
Doses sourced from Australian Immunisation Register, population from ABS ERP June 2020



# Vaccinations by location

Cumulative total doses administered vs eligible state populations\*

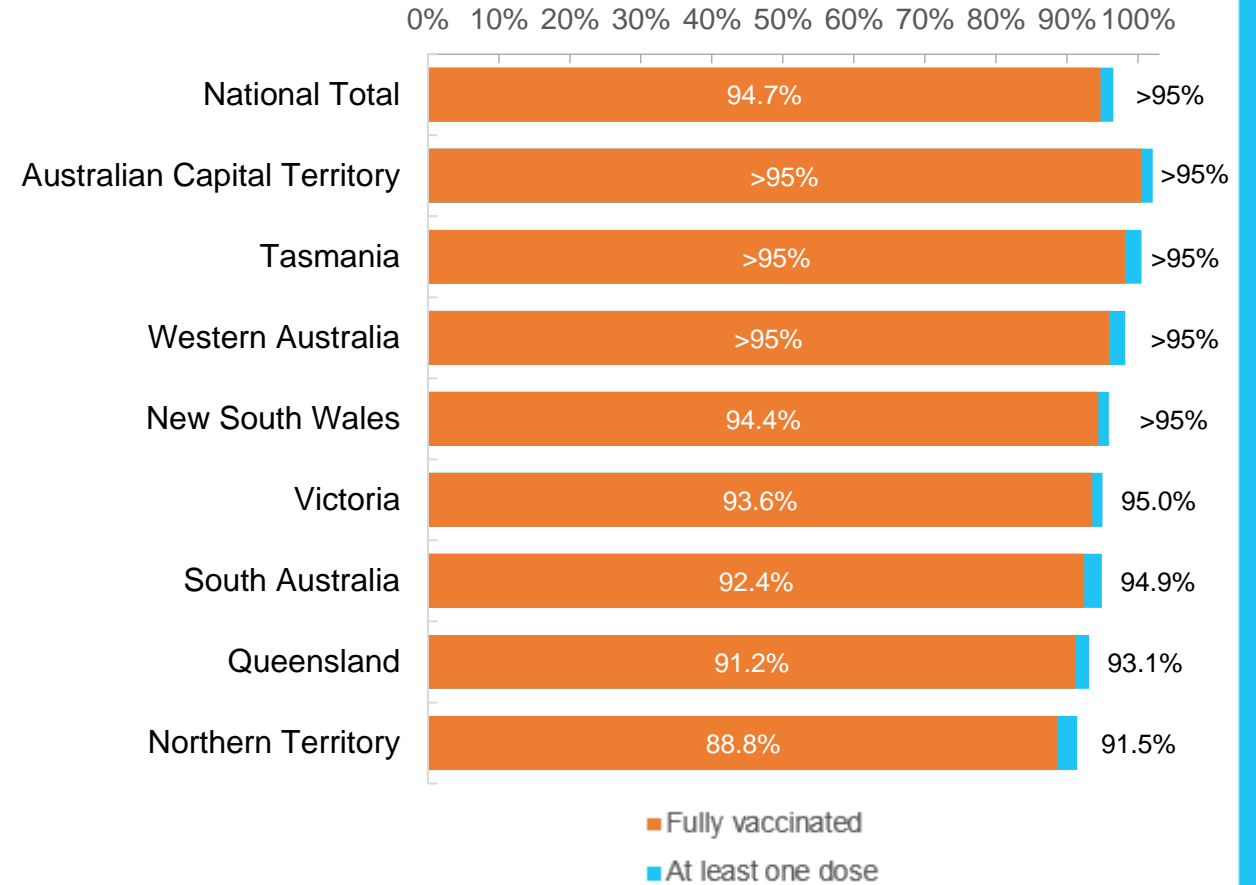


\*Not an indication of percentage vaccinated, numbers will exceed 100 due to multiple doses required per person of the population. All doses are included for those aged 12 and above, and are based on vaccination provider location.

Data as at:  
11 Mar 2022

Australia's COVID-19  
Vaccine Roadmap

First and Second Doses by residential location





# Aboriginal and Torres Strait Islander peoples

## Number of people vaccinated

Data as at:  
08 Mar 2022  
Updated weekly

Australia's COVID-19  
Vaccine Roadmap



**433,759**

people over the age of 16  
have had at least one dose

**83.6%**

of people over the age of 16  
have had at least one dose



**409,697**

people over the age of 16  
are fully vaccinated

**79.0%**

of people over the age of 16 are  
fully vaccinated



People aged 12 – 15 years

**48,162**

**41,564**

**67.9%**

At least one dose

**58.6%**

Fully vaccinated

### 177 Aboriginal community controlled health services (ACCHS)

0#	50	27	44	12	3	21	20
<b>ACT</b>	<b>NSW</b>	<b>NT</b>	<b>QLD</b>	<b>SA</b>	<b>TAS</b>	<b>VIC</b>	<b>WA</b>

Medicare Address State <sup>##</sup>	Individuals Dose 1	Individuals Dose 1 %	Individuals Dose 2	Individuals Dose 2 %
Australian Capital Territory	4,848	91.4%	4,721	89.0%
New South Wales	134,659	86.6%	131,311	84.4%
Northern Territory	42,080	88.9%	39,420	83.3%
Queensland	114,424	80.7%	107,675	76.0%
South Australia	19,667	79.2%	17,966	72.3%
Tasmania	14,001	88.3%	13,491	85.0%
Victoria	35,211	89.5%	34,292	87.1%
Western Australia	52,266	83.2%	46,258	73.6%
Unknown/Other Territories	16,603	64.4%	14,563	56.5%
<b>Totals</b>	<b>433,759</b>	<b>83.6%</b>	<b>409,697</b>	<b>79.0%</b>

Source: Australian Immunisation Register

\*Identifying as Aboriginal and Torres Strait Islander is optional and the estimated population may be under reported.

\*\*Includes all Aboriginal and Torres Strait Islander peoples who have received a vaccination, not limited to those administered in an ACCHS setting

#ACCHS in the ACT are currently operating as a Commonwealth Vaccine Clinics so not included to avoid double counting

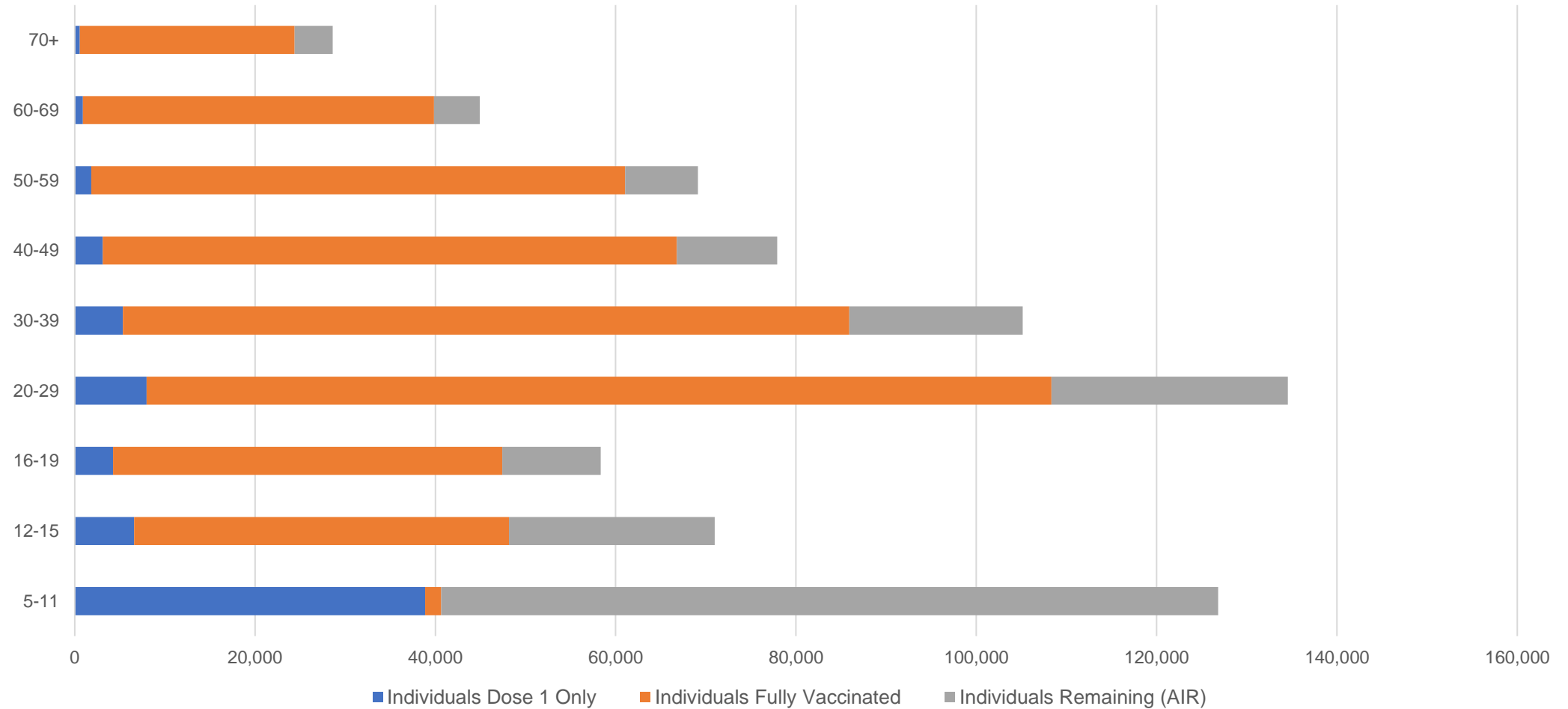
##The above table includes all identified Aboriginal and Torres Strait Islander people who are aged 16 and above by their state of residence.

# Aboriginal and Torres Strait Islander peoples

## Number of people vaccinated by age

Data as at:  
08 Mar 2022  
Updated weekly

Australia's COVID-19  
Vaccine Roadmap



Source: Australian Immunisation Register

# Commonwealth primary care

Data as at:  
11 Mar 2022

Australia's COVID-19  
Vaccine Roadmap



## Primary care vaccine administration sites

<b>5,783</b>	<b>127</b>	<b>177</b>	<b>3,572</b>
GPs	CVCs	ACCHS	Pharmacies



**33,448,027** total vaccine doses administered  
primary care settings as at 11 March  
**+ 83,218** recorded in the last 24 hours

## Primary care vaccinations by provider type

	Doses administered	Daily increase	7 day increase
<b>General Practice*</b> includes other Commonwealth	27,206,463	54,198	264,945
<b>Pharmacy</b>	6,241,564	29,020	139,209

**NSW**  
**11,622,909**  
(+25,132 daily increase)

**VIC**  
**8,352,944**  
(+20,787 daily increase)

**QLD**  
**6,433,081**  
(+14,465 daily increase)

**WA**  
**3,449,716**  
(+13,378 daily increase)

**TAS**  
**616,728**  
(+1,766 daily increase)

**SA**  
**1,985,529**  
(+5,064 daily increase)

**ACT**  
**527,854**  
(+1,206 daily increase)

**NT**  
**200,998**  
(+791 daily increase)

**258,268**

doses administered to persons residing in other territories or with missing residential information

\*General practice includes Commonwealth Vaccination Clinics, Aboriginal Community Health Centres, Royal Flying Doctor Service and other Commonwealth vaccination facilities

Source: Australian Immunisation Register

Data as at:  
11 Mar 2022

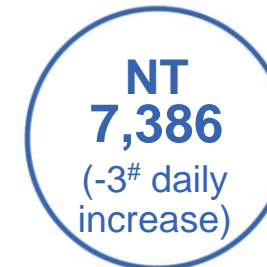
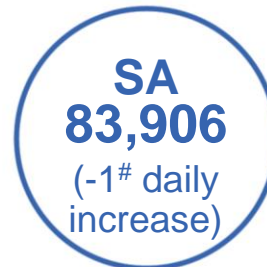
# Commonwealth aged care and disability doses administered



**1,258,864** (+ 781 last 24 hours)

Total vaccine doses administered in aged care and disability facilities as at 11 March

Number of doses administered as part of the Commonwealth aged and disability care rollout



**33,531**

doses administered to persons residing in other territories or with missing residential information

Source: Australian Immunisation Register

\*Sourced from the Australian Immunisation Register. Includes all persons vaccinated at participating residential aged care, disability and related industry settings.

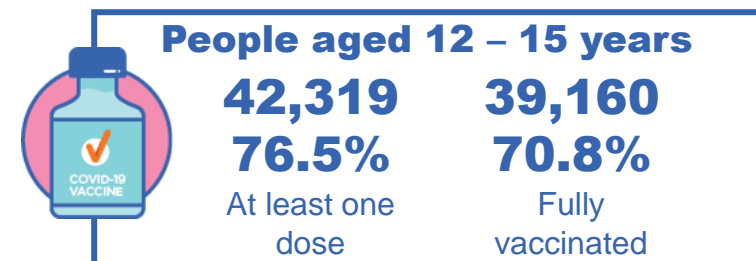
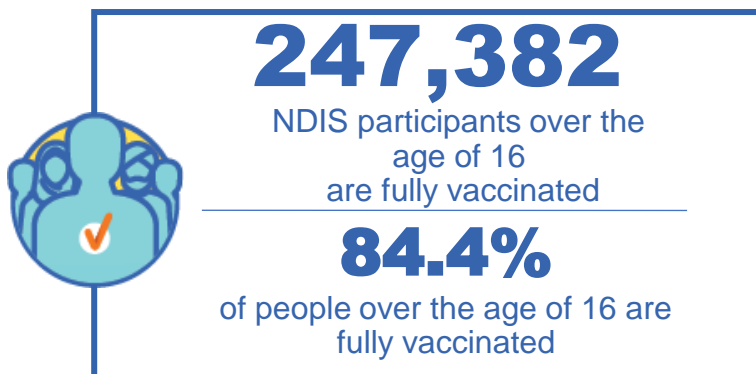
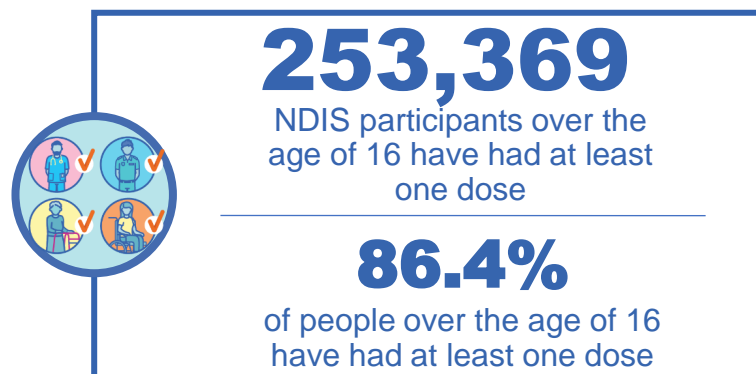
\*\*State level breakdown indicates the residential location and may not align to the state in which the vaccination occurred.

# Numbers are calculated as difference in daily cumulative reported numbers to allow for historical corrections in all data sources. This can occasionally result in negative numbers, such as for SA and NT, where historical details about doses have been updated.

# National Disability Insurance Scheme (NDIS) reported vaccinations

Data as at:  
10 March 2022  
Updated weekly

Australia's COVID-19  
Vaccine Roadmap



## NDIS participant vaccinations

	People aged 16+ with at least one dose	People aged 16+ fully vaccinated	% People aged 16+ with at least one dose	% People aged 16+ fully vaccinated
ACT	4,815	4,744	<b>88.8%</b>	<b>87.5%</b>
NSW	78,108	76,761	<b>87.1%</b>	<b>85.6%</b>
NT	2,200	2,106	<b>77.1%</b>	<b>73.8%</b>
QLD	49,751	48,519	<b>84.6%</b>	<b>82.5%</b>
SA	20,615	19,943	<b>84.0%</b>	<b>81.3%</b>
TAS	6,345	6,147	<b>86.3%</b>	<b>83.6%</b>
VIC	67,537	66,176	<b>87.7%</b>	<b>85.9%</b>
WA	23,998	22,986	<b>87.2%</b>	<b>83.5%</b>
<b>National</b>	<b>253,369</b>	<b>247,382</b>	<b>86.4%</b>	<b>84.4%</b>

Source: Linkage between National Disability Insurance Agency data and the Australian Immunisation Register. Total NDIS participant numbers as at 28th February. Australian Immunisation Register data as at 9 March. Includes all participants regardless of residence type.

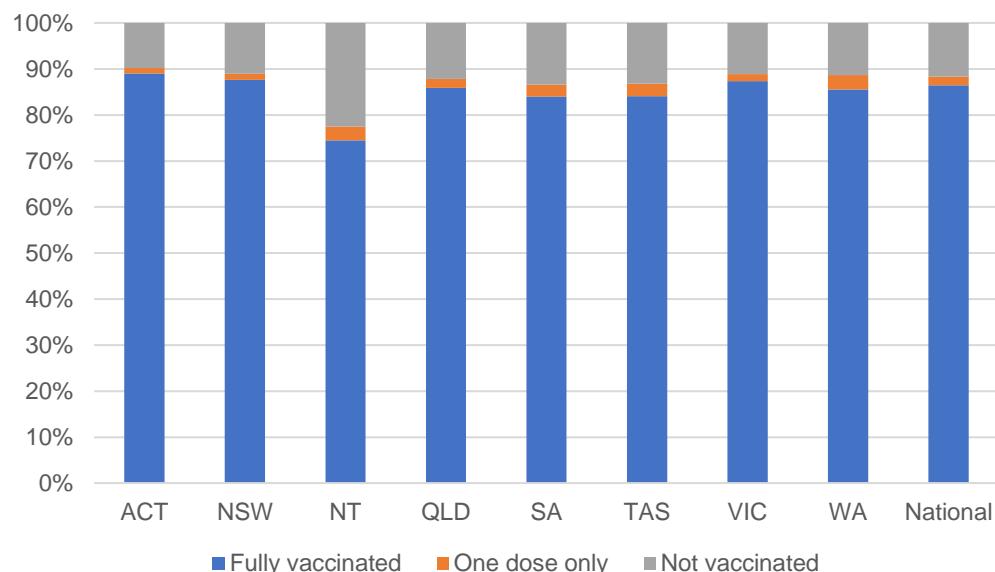
# National Disability Insurance Scheme (NDIS) reported vaccinations

Data as at:  
10 March 2022  
Updated Weekly

Australia's COVID-19  
Vaccine Roadmap

NATIONAL	Total people with at least one dose	People fully vaccinated	Total number of individuals in cohort	% People with at least one dose	% People fully vaccinated
NDIS participants living in disability accommodation	20,598	20,191	23,352	88.2%	86.5%

## NDIS participants in disability and aged care accommodation



Source: Linkage between National Disability Insurance Agency data and the Australian Immunisation Register. Includes participants residing in disability accommodation only.

Source: Total NDIS participant numbers as at 28th February. Participant data as at 9 March. Australian Immunisation Register data as at 9 March. Worker data as at 10 March.

## NDIS workforce vaccinations

	NDIS workers with at least one dose	NDIS workers fully vaccinated	% NDIS workers with at least one dose	% NDIS workers fully vaccinated
NSW	120,178	117,760	97.9%	96.0%
VIC	116,128	108,193	98.2%	91.5%
QLD	68,810	67,813	97.3%	95.9%
WA	32,680	30,259	98.4%	91.1%
SA	35,209	32,003	98.1%	89.1%
TAS	10,778	10,476	99.6%	96.8%
ACT	3,550	3,519	99.6%	98.8%
NT	3,481	3,288	99.7%	94.1%
<b>TOTAL</b>	<b>390,814</b>	<b>373,311</b>	<b>98.0%</b>	<b>93.6%</b>

Source: the NDIS Commission has established a requirement for registered NDIS providers who provide intensive disability support services to report on the vaccination status of workers they employ, or otherwise engage, to deliver NDIS-funded supports and services, and who are required to be vaccinated in accordance with in-force state and territory public health orders. The statistics reflect data reported to the NDIS Commission by registered NDIS providers and should be considered indicative and subject to change

Note: Some registered NDIS providers are yet to report on the vaccination status of their workforce. The NDIS Commission is working with those providers around reporting requirements.

Remaining workers not included include those exempt from vaccination requirements, workers whose vaccination status is not yet verified by the provider (such as workers on leave) and provider reporting anomalies.

# Residential aged care vaccination rollout

Residential aged care facilities status

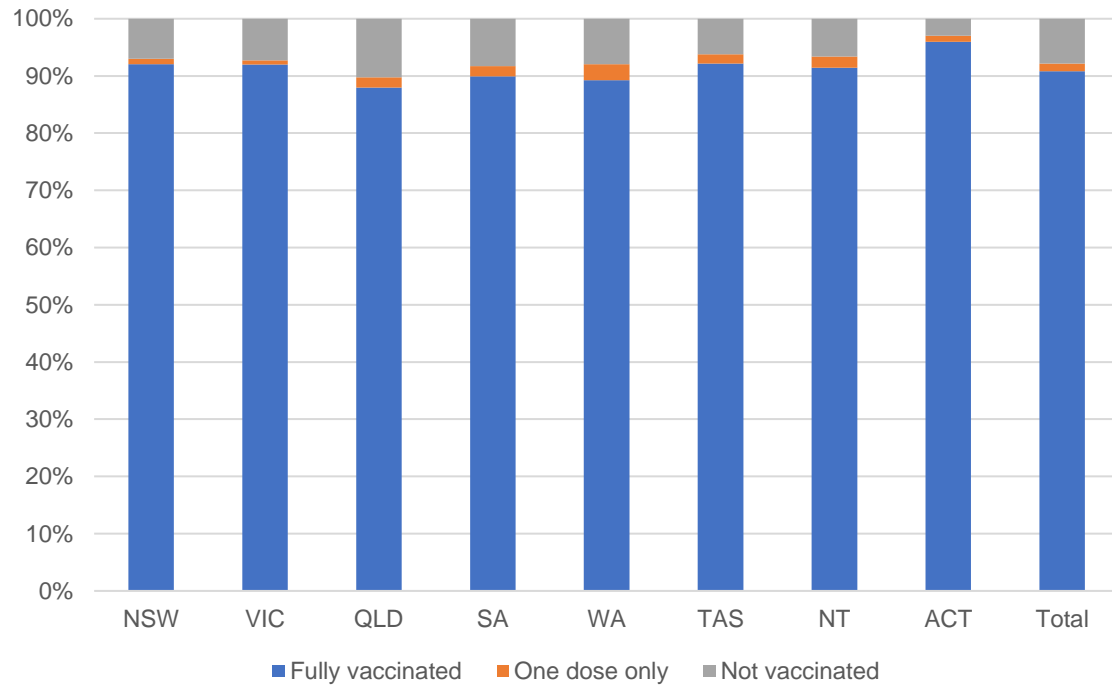
**100%**  
Commonwealth facilities visited (2,537 planned sites)

**173,652**  
People fully vaccinated

**176,173**  
People with at least one dose

Data as at:  
10 Mar 2022  
Updated weekly

## Aged care resident vaccinations



## Aged care worker vaccinations

Jurisdictions	Total workers with at least one dose	Workers fully vaccinated	% Workers with at least one dose	% Workers fully vaccinated
NSW	78,694	78,682	98.4%	98.4%
VIC	68,396	68,395	98.1%	98.1%
QLD	48,200	48,198	98.0%	98.0%
SA	26,738	26,714	98.8%	98.7%
WA	23,879	23,877	99.7%	99.7%
TAS	7,799	7,799	99.9%	99.9%
NT	870	870	99.9%	99.9%
ACT	3,063	3,063	100.0%	100.0%
<b>Total</b>	<b>257,639</b>	<b>257,598</b>	<b>98.5%</b>	<b>98.5%</b>

Source: My Aged Care Portal vaccination progress

\*Status updates are provided by facilities at least once per week. Reporting is updated Monday to Friday to encompass different facility updates being made on different days.

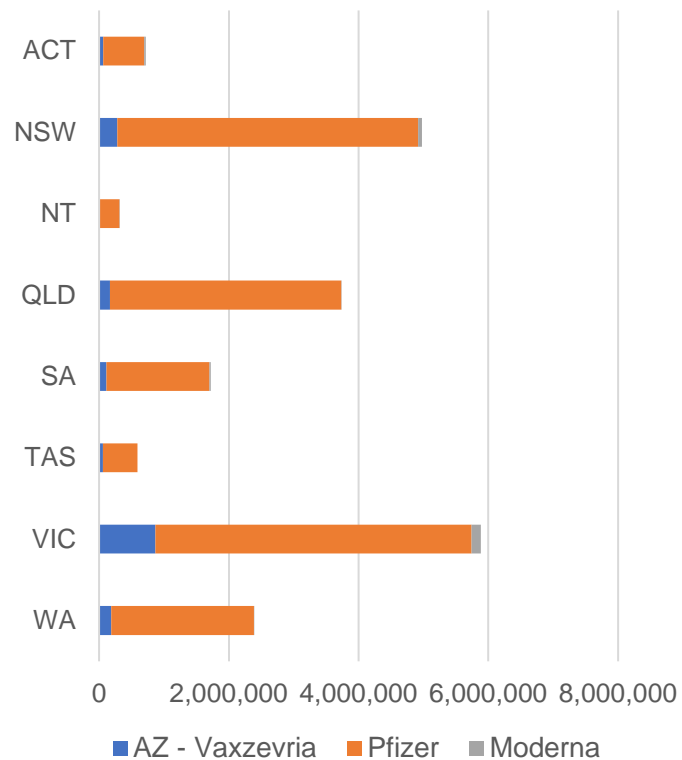
Data is sourced directly from Aged Care Service Providers and is not drawn or closely aligned with data from AIR due to inconsistencies and potential lags in uploading of records.



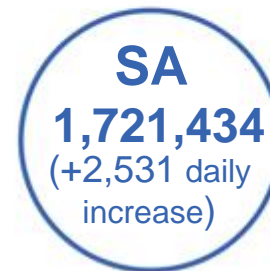
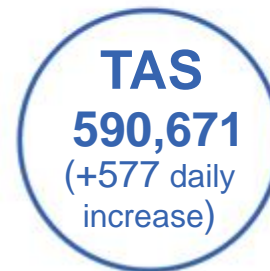
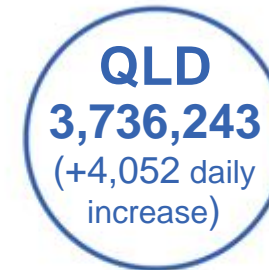
Data as at:  
11 Mar 2022

## Jurisdiction administered

Total vaccine doses administered in State and Territory clinics as at 11 March



**20,335,116** total vaccine doses administered in State and Territory clinics as at 11 March  
 + **23,937** recorded in the last 24 hours  
 + **128,037** recorded in the last 7 days

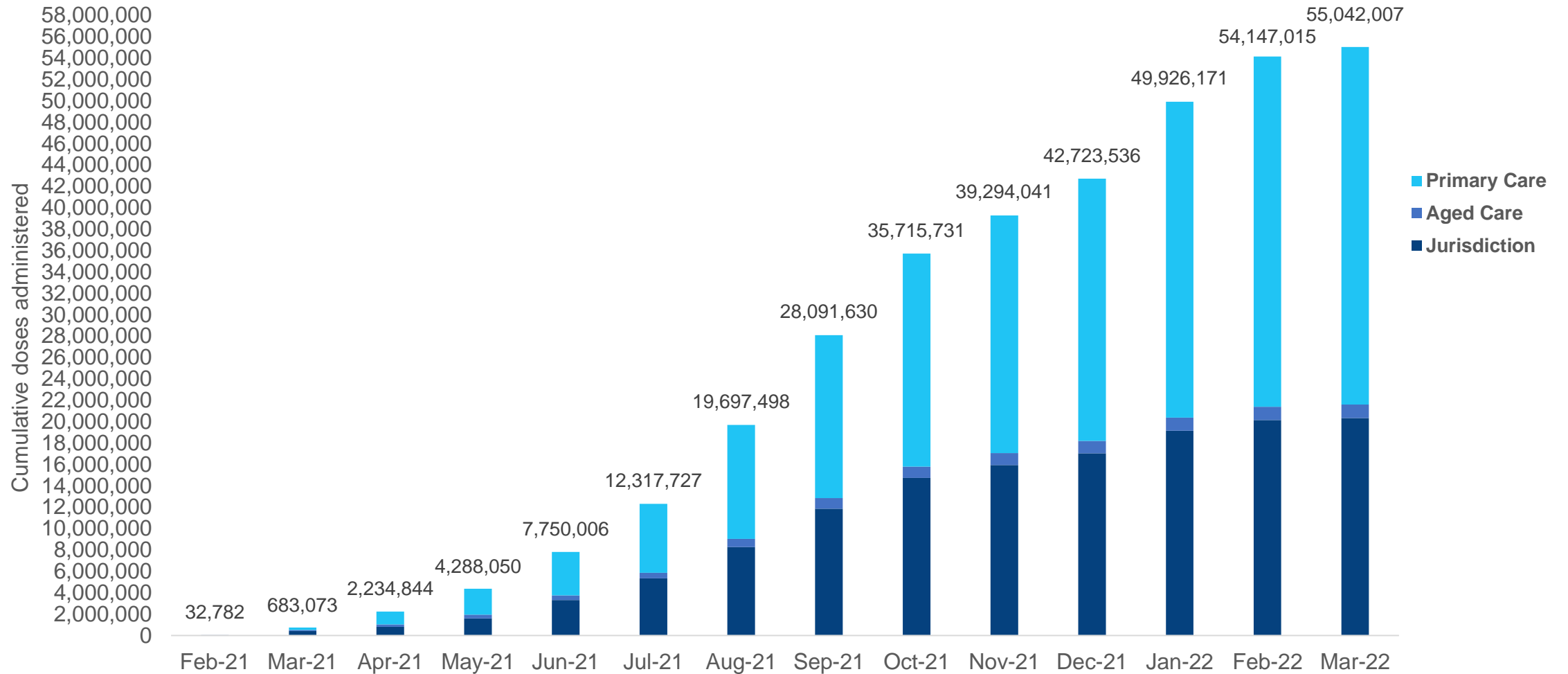


\*Sourced from the Australian Immunisation Register. Numbers are calculated as difference in daily cumulative reported numbers to allow for historical corrections.

Source: Australian Immunisation Register

Data as at:  
11 Mar 2022

# Cumulative doses administered by channel



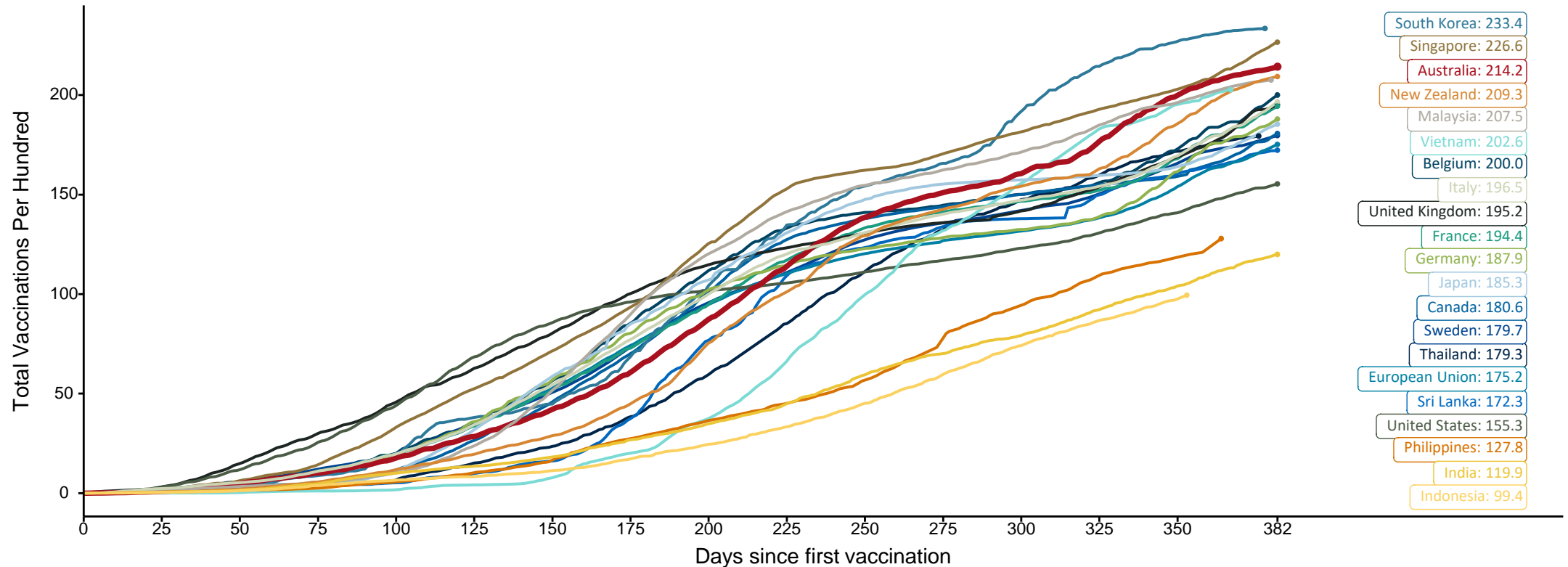
Source: Australian Immunisation Register

# Doses at equivalent stages of rollout (Day 382)

Data as at:  
11 Mar 2022

The x-axis is truncated at the length of Australia's vaccination program. Countries with intermittent reporting have had their doses per 100 imputed to Australia's current stage of rollout. Israel excluded as it is beyond scale of the graph

Cumulative doses administered (11 Mar): **55,042,007**

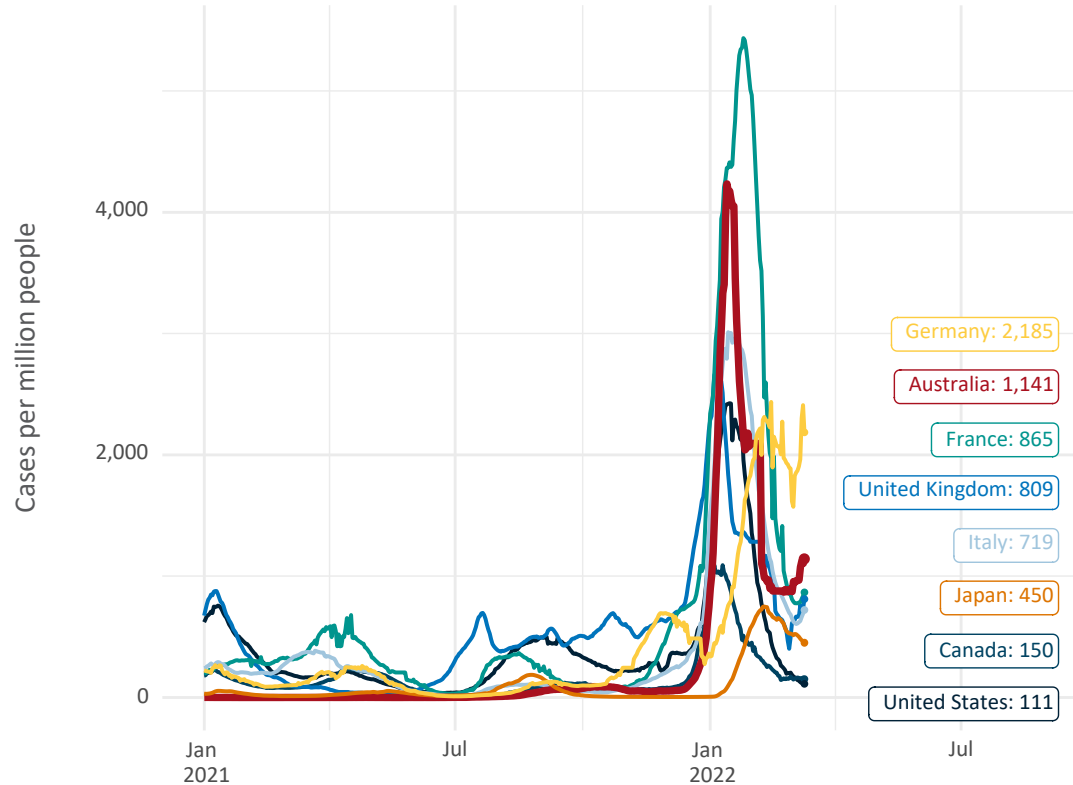


Note: From 11 January 2022, data for Australia includes all doses administered to people 5 and over. Prior to 11 January, data was for 12 and over.  
Source: Department of Health (Australia), Our World in Data (international)  
Latest data: 11 March

Data as at:  
11 Mar 2022

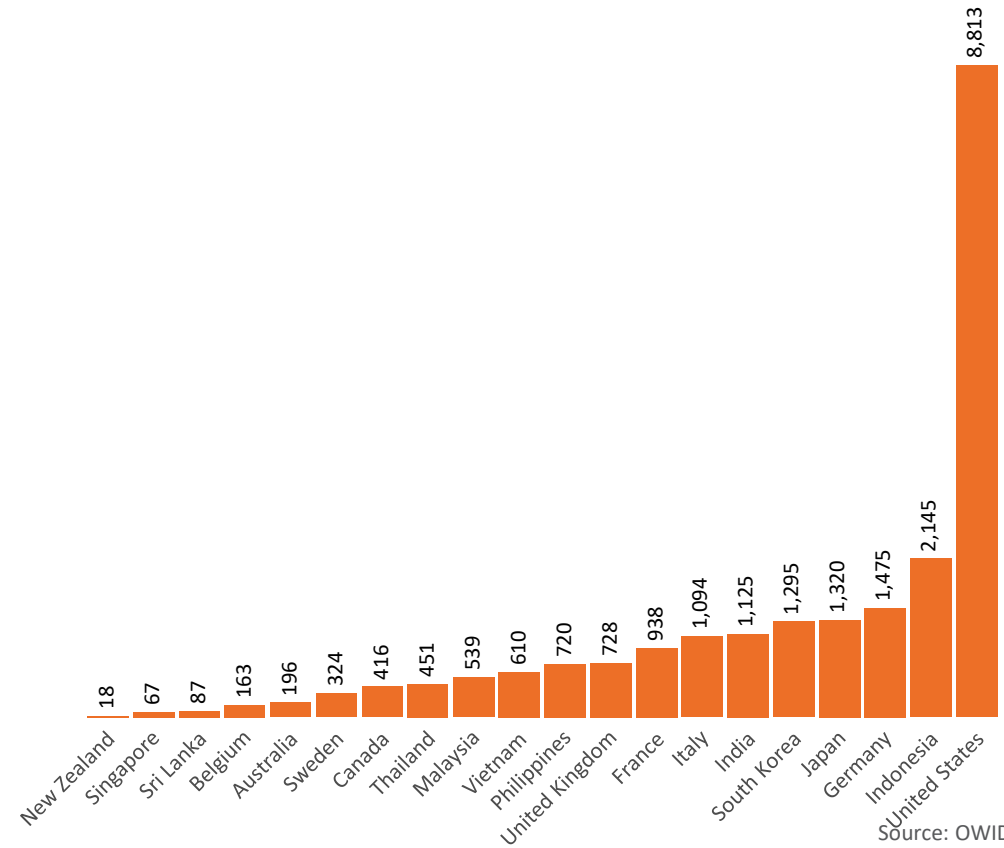
# International data – COVID-19

New daily cases per million in 2021, Australia and G7 countries  
Smoothed - 7 day average



Source: OWID  
Data downloaded: 12 Mar 2022 07:50  
Latest data: 10 Mar 2022

COVID-19 deaths in past 7 days - Australia and select countries



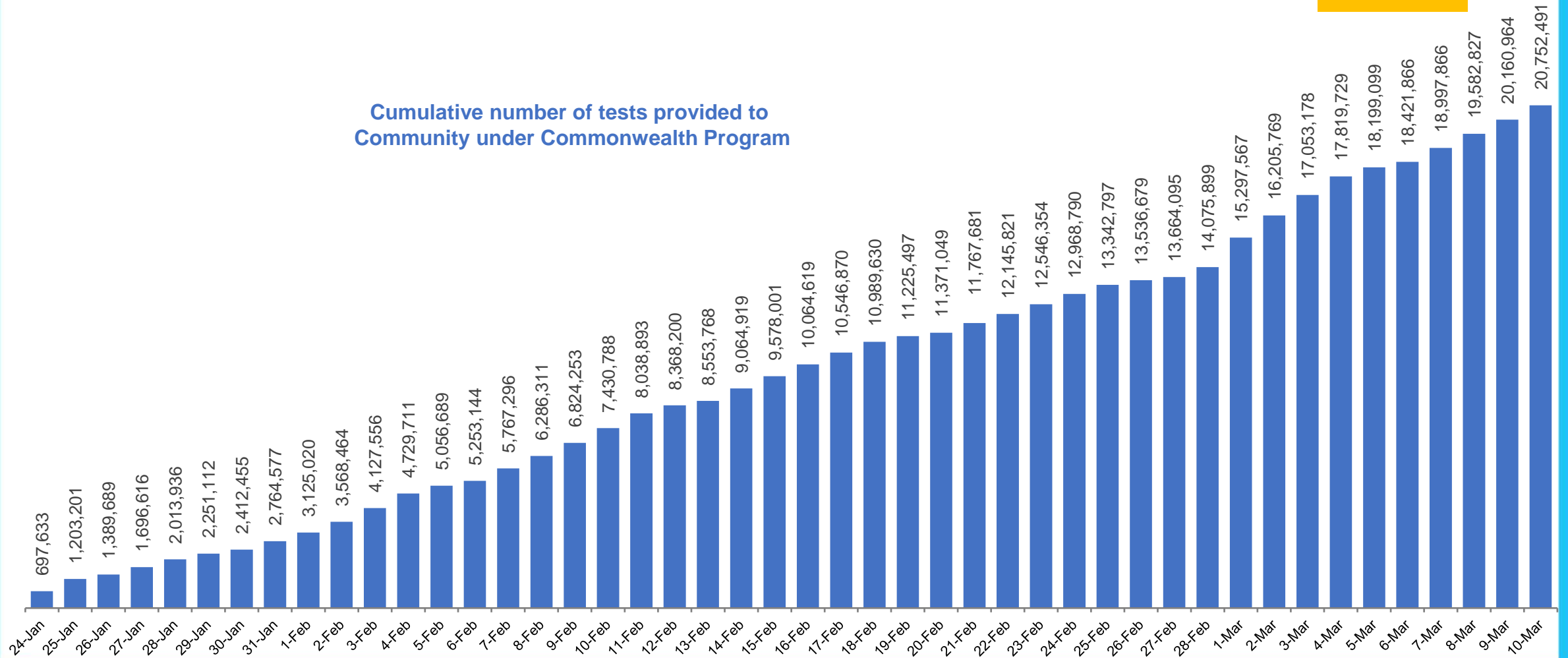
Source: OWID  
Data downloaded: 12 Mar 2022 07:50  
Latest data: 10 Mar 2022

Data as at:  
11 Mar 2022

# Concessional rapid antigen test program


5,602 pharmacies have delivered over 20.7 million rapid antigen tests to more than 3.5m eligible concession card holders under the Government's concessional rapid antigen test program.

Cumulative number of tests provided to  
Community under Commonwealth Program



# Pandemic Response Payments

Data as at midnight: 6 Mar 2022  
Updated weekly



**2.38 million**  
People have received at least one COVID Disaster Payment (including ISP200)

**\$13.75 billion**  
Paid Out as at 6 Mar 2022


**7.04 million**  
Claims granted across three different payments



**92%**  
of Claims Received Digitally



<b>COVID Disaster Payment:</b>	5.89 million claims received - 2.19 million individuals paid a total of \$12.59 billion.
<b>\$200 Income Support Payment:</b>	353,000 claims received - 183,000 individuals paid a total of \$268.9 million.
<b>Pandemic Leave Disaster Payment:</b>	1,214,000 claims received - 800,000 individuals paid a total of \$895.0 million.



**THREE PAYMENTS AVAILABLE**

**COVID Disaster Payment**  
assisting during a lockdown event in a Commonwealth hotspot.

**Income Support Payment \$200**  
for income support recipients who lost at least 8 hours of work.

**Pandemic Leave Disaster Payment**  
for those who have to self-isolate, quarantine or care.

For more information visit:  
[servicesaustralia.gov.au](https://servicesaustralia.gov.au)

## COVID-19 DISASTER PAYMENTS

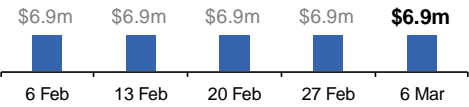
**Northern Territory**  
Lockdown (#3) from 16 Nov to 22 Nov  
Claiming period ended 27 Dec

**7,500 people have received at least one COVID Disaster Payment.**

**\$6.9m paid out as at 6 Mar 2022.**

**Nil paid in initial payments in the week ending 6 Mar 2022.**

Cumulative payments made by Territory since activation on 25 Aug 2021.



Date	Cumulative Payments
6 Feb	\$6.9m
13 Feb	\$6.9m
20 Feb	\$6.9m
27 Feb	\$6.9m
6 Mar	\$6.9m

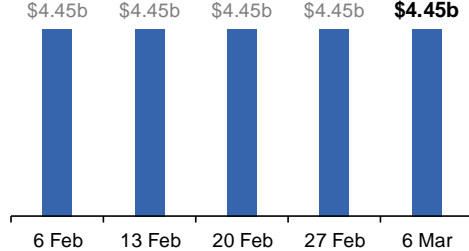
**Victoria**  
Lockdown (#6) from 6 Aug to 28 Oct  
Claiming period ended 9 Dec

**745,000 people have received at least one COVID Disaster Payment.**

**\$4.45b paid out as at 6 Mar 2022.**

**Nil paid in initial and reoccurring payments in the week ending 6 Mar 2022.**

Cumulative payments made by State since activation on 8 Jun 2021.



Date	Cumulative Payments
6 Feb	\$4.45b
13 Feb	\$4.45b
20 Feb	\$4.45b
27 Feb	\$4.45b
6 Mar	\$4.45b

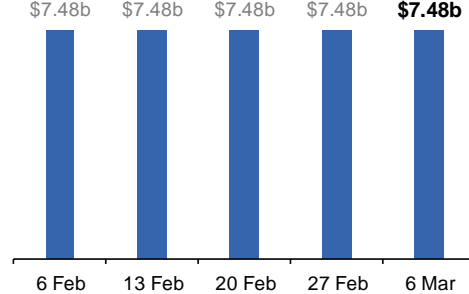
**New South Wales**  
Lockdown from 24 Jun to 10 Oct  
Claiming period ended 27 Nov

**1.08m people have received at least one COVID Disaster Payment.**

**\$7.48b paid out as at 6 Mar 2022.**

**Nil paid in initial and reoccurring payments in the week ending 6 Mar 2022.**

Cumulative payments made by State since activation on 1 Jul 2021.



Date	Cumulative Payments
6 Feb	\$7.48b
13 Feb	\$7.48b
20 Feb	\$7.48b
27 Feb	\$7.48b
6 Mar	\$7.48b

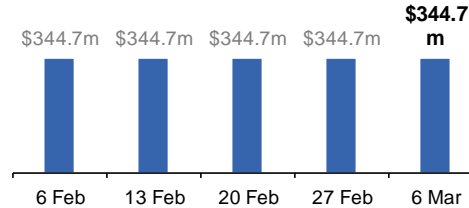
**Australian Capital Territory**  
Lockdown from 12 Aug to 14 Oct  
Claiming period ended 25 Nov

**65,000 people have received at least one COVID Disaster Payment.**

**\$344.7m paid out as at 6 Mar 2022.**

**Nil paid in initial and reoccurring payments in the week ending 6 Mar 2022.**

Cumulative payments made by Territory since activation on 20 Aug 2021.



Date	Cumulative Payments
6 Feb	\$344.7m
13 Feb	\$344.7m
20 Feb	\$344.7m
27 Feb	\$344.7m
6 Mar	\$344.7m

# Pandemic Response Payments (continued)

Data as at midnight: 6 Mar 2022  
Updated weekly

## COVID-19 DISASTER PAYMENTS

