



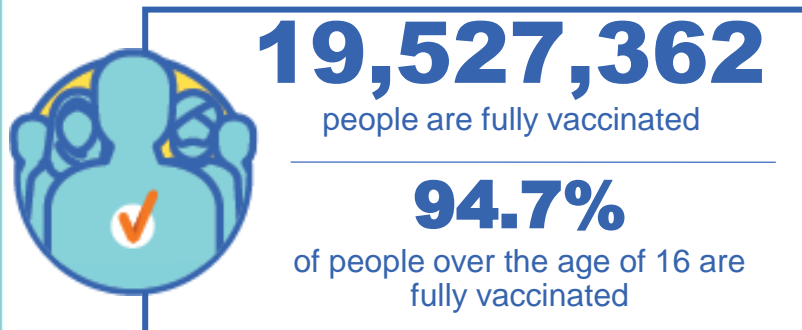
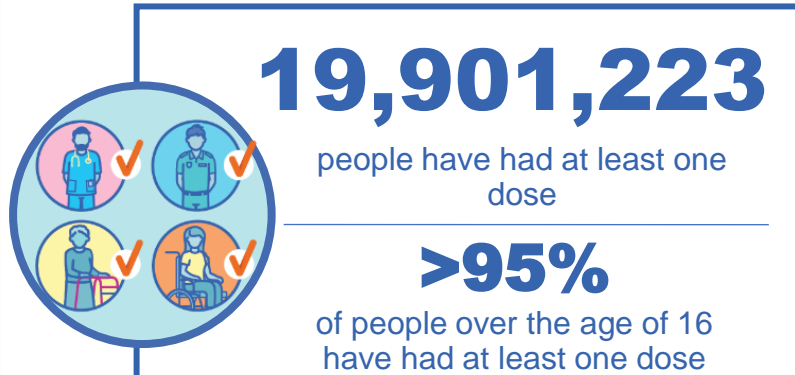
**Australian Government**  
**Operation COVID Shield**

# COVID-19 Vaccine Roll-out

11 March 2022

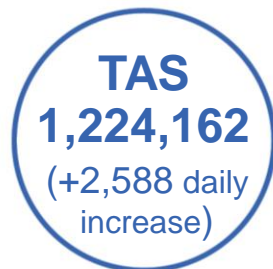
Data as at:  
10 Mar 2022

## Total vaccine doses



**54,934,071** total vaccine doses administered nationally as at 10 March

**+92,914** recorded in the last 24 hours



\*Administration state breakdown indicates state in which a vaccine was administered

\*\*Overall dose count includes instances of more than two doses per person in a small number of cases.

Source: Australian Immunisation Register

# Booster Vaccinations

Australia's COVID-19  
Vaccine Roadmap

Data as at:  
10 Mar 2022



**169,913**

Indigenous people who have  
received more than two doses

**49.1%**

of eligible population (345,908)



**158,904**

Aged Care Residents who have  
received more than two doses##

**91.5%**

of eligible population (173,674)



**161,221**

NDIS participants

**19,666**

NDIS residents

who have received more than two doses#

**69.3%**

of eligible population  
(232,000)

**84.3%**

of eligible population  
(23,000)



**12,098,500** total people who  
have received more than two doses nationally

**+56,899** recorded in the last 24 hours

**65.3%** of people who are eligible (18,536,270)  
have received more than two doses

NSW	People	% of Eligible
Cumulative	3,724,779	60.7%
Daily increase	14,157	

VIC	People	% of Eligible
Cumulative	3,294,632	66.1%
Daily increase	14,958	

QLD	People	% of Eligible
Cumulative	2,088,715	61.6%
Daily increase	9,734	

WA	People	% of Eligible
Cumulative	1,429,061	83.6%
Daily increase	10,082	

SA	People	% of Eligible
Cumulative	856,832	70.0%
Daily increase	3,915	

TAS	People	% of Eligible
Cumulative	269,716	67.5%
Daily increase	1,810	

ACT	People	% of Eligible
Cumulative	247,007	72.2%
Daily increase	616	

NT	People	% of Eligible
Cumulative	99,493	64.2%
Daily increase	923	

**88,265**

doses administered to persons  
residing in other territories or with  
missing residential information

\*People may belong to multiple groups and could be represented in the above breakdowns multiple times.

# NDIS participants data as at 9 March 2022.

## Aged Care Residents data as at 10 March 2022.

Source: Australian Immunisation Register

# Vaccinations by residential location

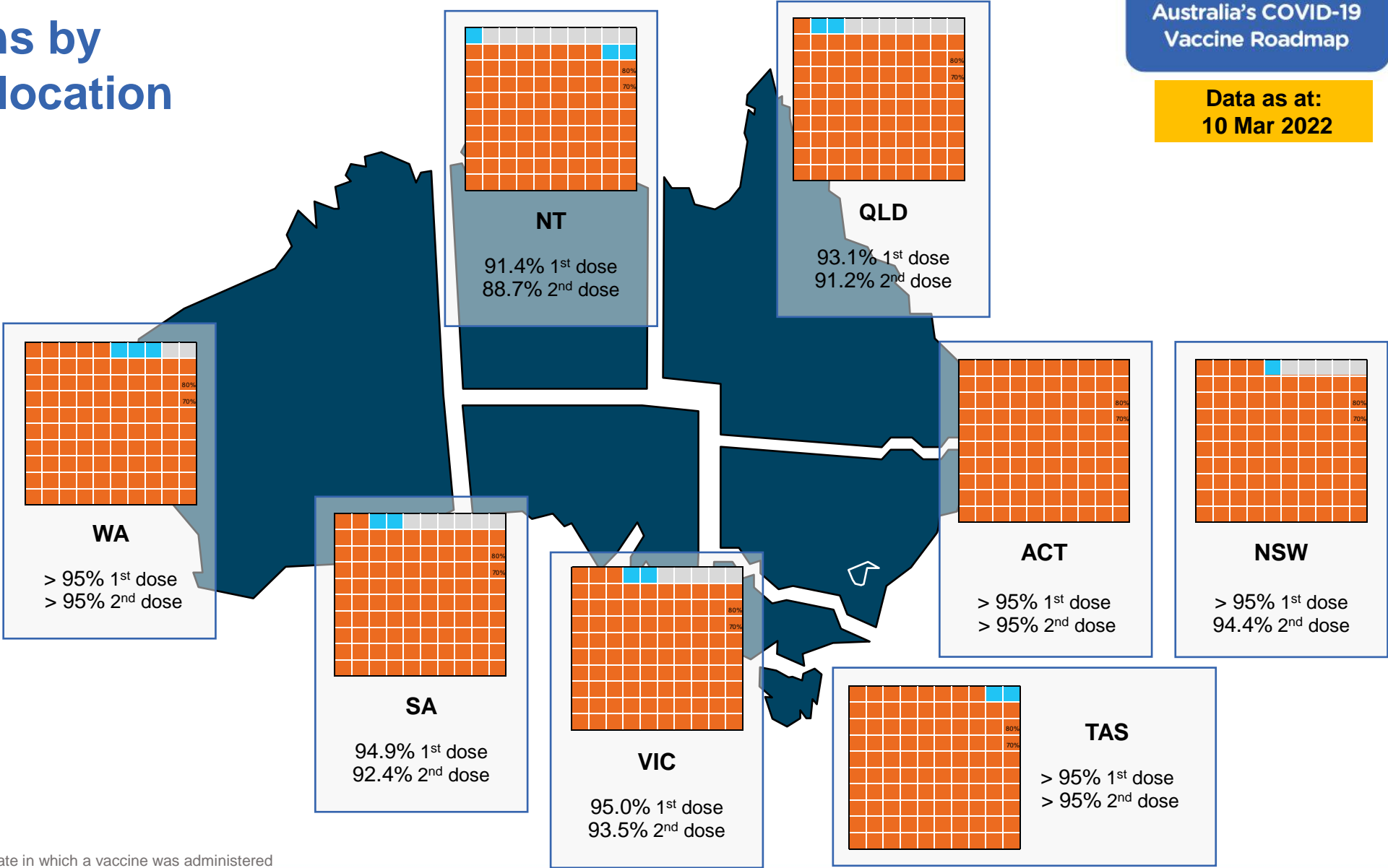
Data as at: 10 Mar 2022

## First doses

Age	Today	4 weeks ago	8 weeks ago
16+	>95%	>95%	>95%
50+	>95%	>95%	>95%
70+	>95%	>95%	>95%

## Fully vaccinated

Age	Today	4 weeks ago	8 weeks ago
16+	94.7%	94.1%	92.9%
50+	>95%	>95%	>95%
70+	>95%	>95%	>95%



\*Residential state may differ from the state in which a vaccine was administered

# Commonwealth and Jurisdiction vaccine doses administered

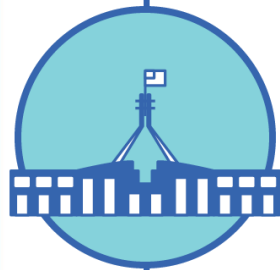
Data as at:  
10 Mar 2022



**54,934,071** total vaccine  
doses administered nationally as at 10 March  
**+ 92,914** recorded in the last 24 hours



**20,311,179**  
doses administered by state  
and territory facilities  
**+ 18,845**  
recorded in the last 24 hours



**34,622,892**  
doses administered by  
commonwealth facilities  
**+ 74,069**  
recorded in the last 24 hours

**33,364,809** total vaccine doses  
administered in primary care settings  
**1,258,083** total vaccine doses  
administered in aged care and disability  
settings

NSW	Jurisdictions	Commonwealth
Cumulative	4,974,754	12,140,155
Daily increase	3,422	20,783

VIC	Jurisdictions	Commonwealth
Cumulative	5,879,135	8,634,968
Daily increase	4,787	18,006

QLD	Jurisdictions	Commonwealth
Cumulative	3,732,191	6,689,495
Daily increase	2,548	14,812

WA	Jurisdictions	Commonwealth
Cumulative	2,385,481	3,560,242
Daily increase	2,435	12,313

TAS	Jurisdictions	Commonwealth
Cumulative	590,094	634,068
Daily increase	611	1,977

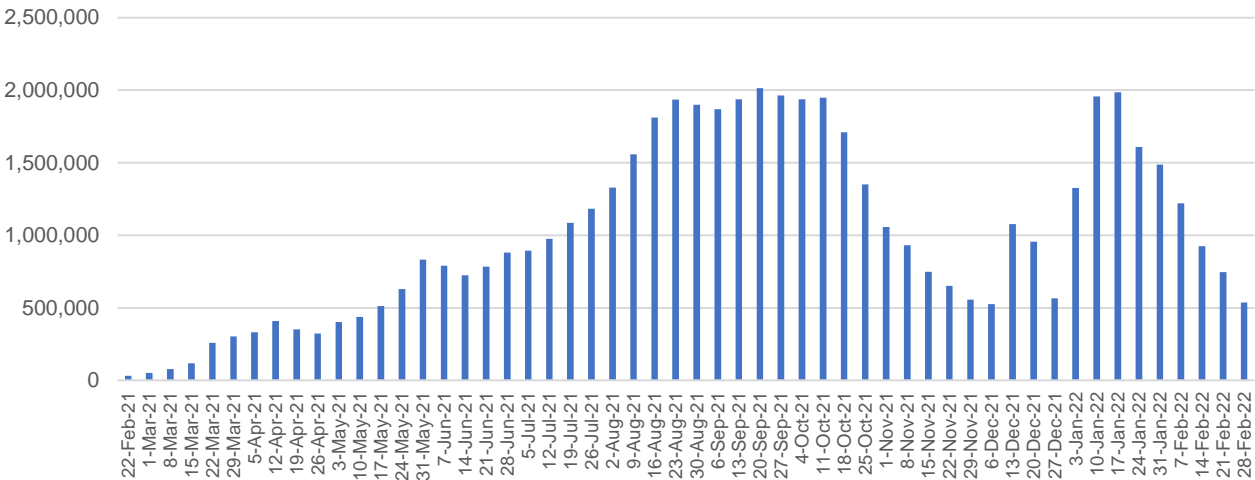
SA	Jurisdictions	Commonwealth
Cumulative	1,718,903	2,056,521
Daily increase	2,138	4,477

ACT	Jurisdictions	Commonwealth
Cumulative	718,254	686,515
Daily increase	1,994	1,183

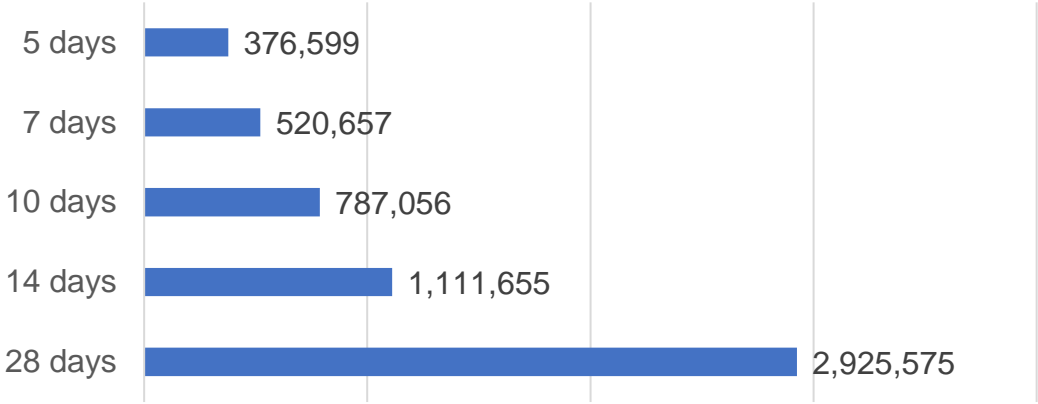
NT	Jurisdictions	Commonwealth
Cumulative	312,367	220,928
Daily increase	910	518

# Vaccine milestone charts

Doses Administered by Week



Doses Reported

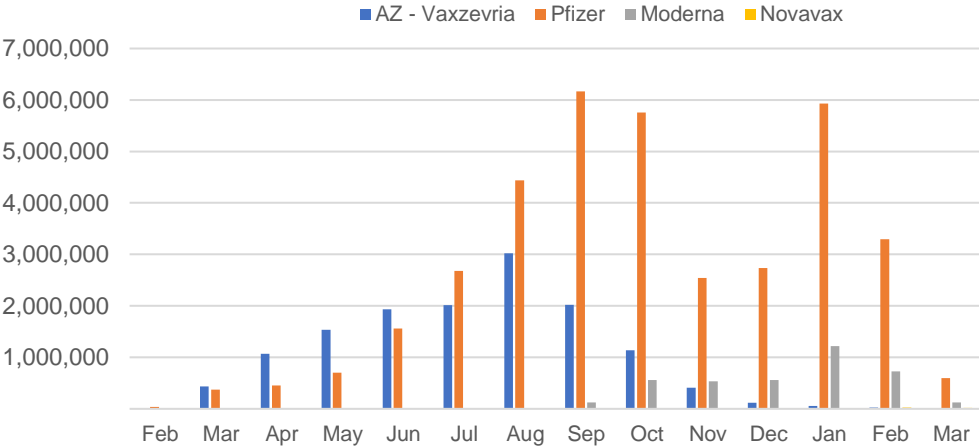


\*Sourced from the Australian Immunisation Register.

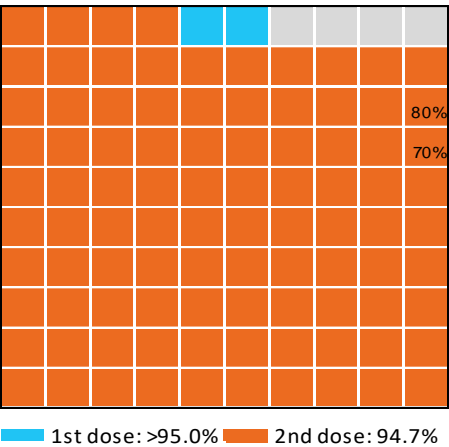
Data as at:  
10 Mar 2022

Australia's COVID-19  
Vaccine Roadmap

Doses by administration month and vaccine type



Eligible population percentage coverage



\*Each square represents 1% of the national population. Squares are filled as milestones are achieved.

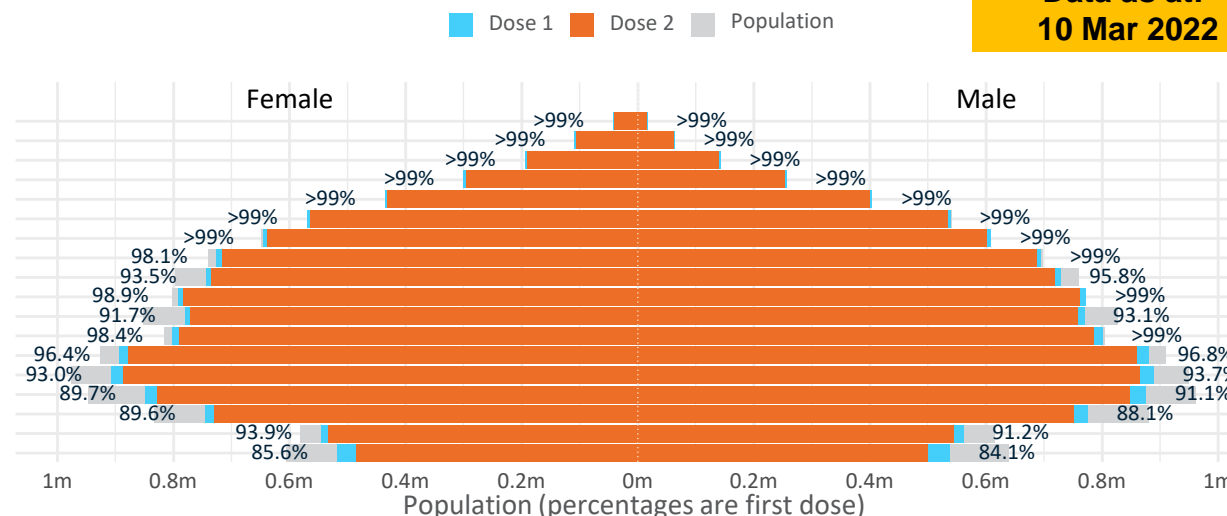
# Doses by age and sex

First and second doses by age and sex

Australia's COVID-19  
Vaccine Roadmap

Data as at:  
10 Mar 2022

Age	Dose 1	Dose 2
95+	59,152 (>99%)	55,717 (>99%)
90-94	173,127 (>99%)	167,144 (>99%)
85-89	338,026 (>99%)	330,355 (>99%)
80-84	556,498 (>99%)	548,329 (>99%)
75-79	840,132 (>99%)	830,660 (>99%)
70-74	1,109,992 (>99%)	1,097,732 (>99%)
65-69	1,255,578 (>99%)	1,239,842 (98.5%)
60-64	1,421,678 (99.0%)	1,403,485 (97.7%)
55-59	1,473,718 (94.7%)	1,454,896 (93.5%)
50-54	1,566,138 (>99%)	1,545,897 (98.8%)
45-49	1,551,119 (92.5%)	1,528,800 (91.2%)
40-44	1,605,075 (>99%)	1,576,718 (97.3%)
35-39	1,777,627 (96.9%)	1,741,054 (94.9%)
30-34	1,803,888 (93.8%)	1,757,713 (91.4%)
25-29	1,734,905 (91.0%)	1,684,387 (88.3%)
20-24	1,527,590 (89.2%)	1,485,431 (86.8%)
16-19	1,106,980 (92.6%)	1,079,202 (90.3%)
12-15	1,055,870 (84.9%)	984,878 (79.2%)



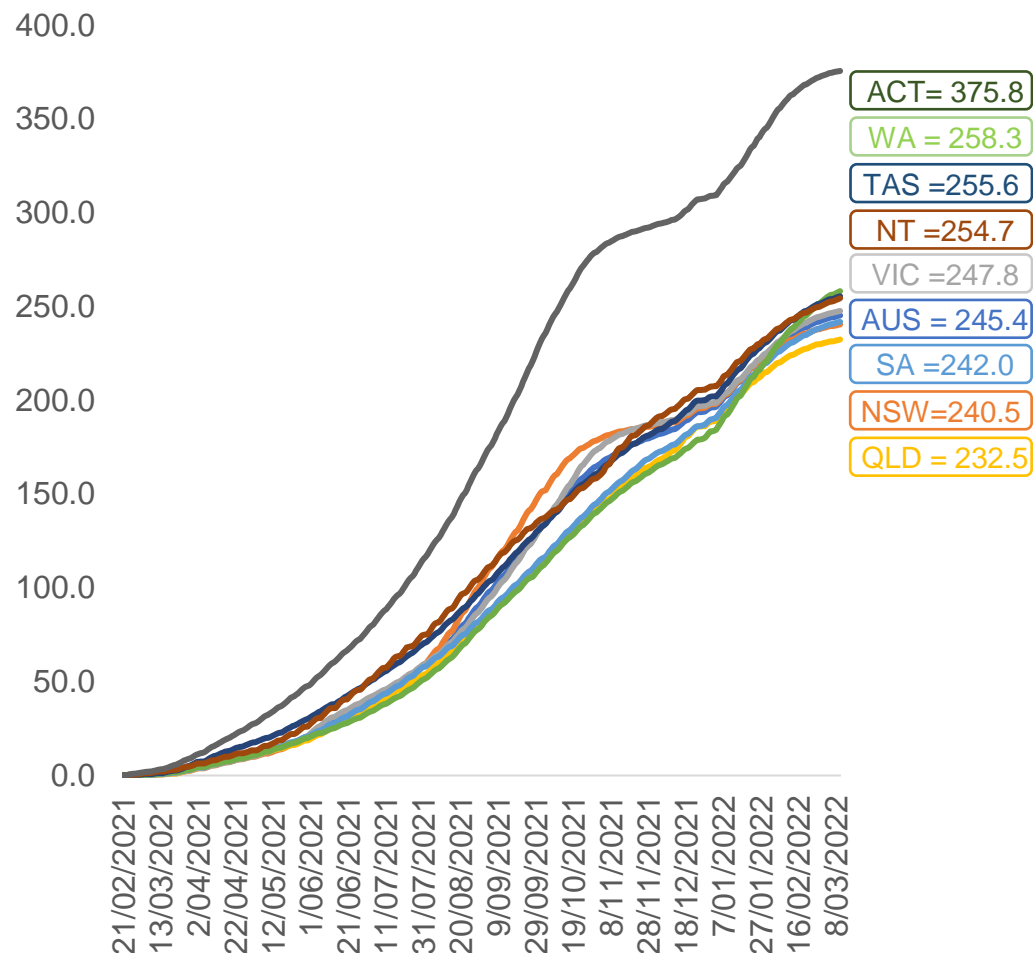
	AUS	ACT	NSW	NT	QLD	SA	TAS	VIC	WA
16 and over - dose 1	19,901,223	351,062	6,294,892	174,241	3,828,838	1,366,489	442,255	5,135,562	2,075,667
16 and over - dose 2	19,527,362	345,635	6,198,822	169,073	3,750,390	1,330,772	431,933	5,058,227	2,027,394
16 and over - population	20,619,959*	344,037	6,565,651	190,571	4,112,707	1,440,400	440,172	5,407,574	2,114,978
16 and over % with dose 1	96.51%	>99%	95.88%	91.43%	93.10%	94.87%	>99%	94.97%	98.14%
16 and over % with dose 2	94.70%	>99%	94.41%	88.72%	91.19%	92.39%	98.13%	93.54%	95.86%
5 to 11 - dose 1	1,160,503	31,314	345,379	12,832	205,232	82,619	27,966	318,417	129,669
5 to 11 - dose 2	113,891	4,270	38,472	1,025	21,794	6,266	2,872	30,229	8,475
5 to 11 - population	2,276,638	39,789	716,460	24,750	478,731	148,816	45,033	578,499	244,154
5 to 11 % with dose 1	50.97%	78.70%	48.21%	51.85%	42.87%	55.52%	62.10%	55.04%	53.11%
5 to 11 % with dose 2	5.00%	10.73%	5.37%	4.14%	4.55%	4.21%	6.38%	5.23%	3.47%
12 to 15 - dose 1	1,055,870	20,097	326,211	10,917	207,909	68,426	22,904	276,198	114,096
12 to 15 - dose 2	984,878	19,138	308,437	9,640	191,858	63,633	21,466	261,168	101,701
12 to 15 - population	1,243,990	19,693	390,330	13,060	270,146	82,747	26,308	308,611	132,869
12 to 15 % with dose 1	84.88%	>99%	83.57%	83.59%	76.96%	82.69%	87.06%	89.50%	85.87%
12 to 15 % with dose 2	79.17%	97.18%	79.02%	73.81%	71.02%	76.90%	81.59%	84.63%	76.54%

\*National population will not equal sum of listed jurisdictions due to a small number of people counted in national population residing in some 'other' territories. Sum of state doses will not add to national total as some records are unable to be geocoded to a State or Territory.  
Doses sourced from Australian Immunisation Register, population from ABS ERP June 2020



# Vaccinations by location

Cumulative total doses administered vs eligible state populations\*

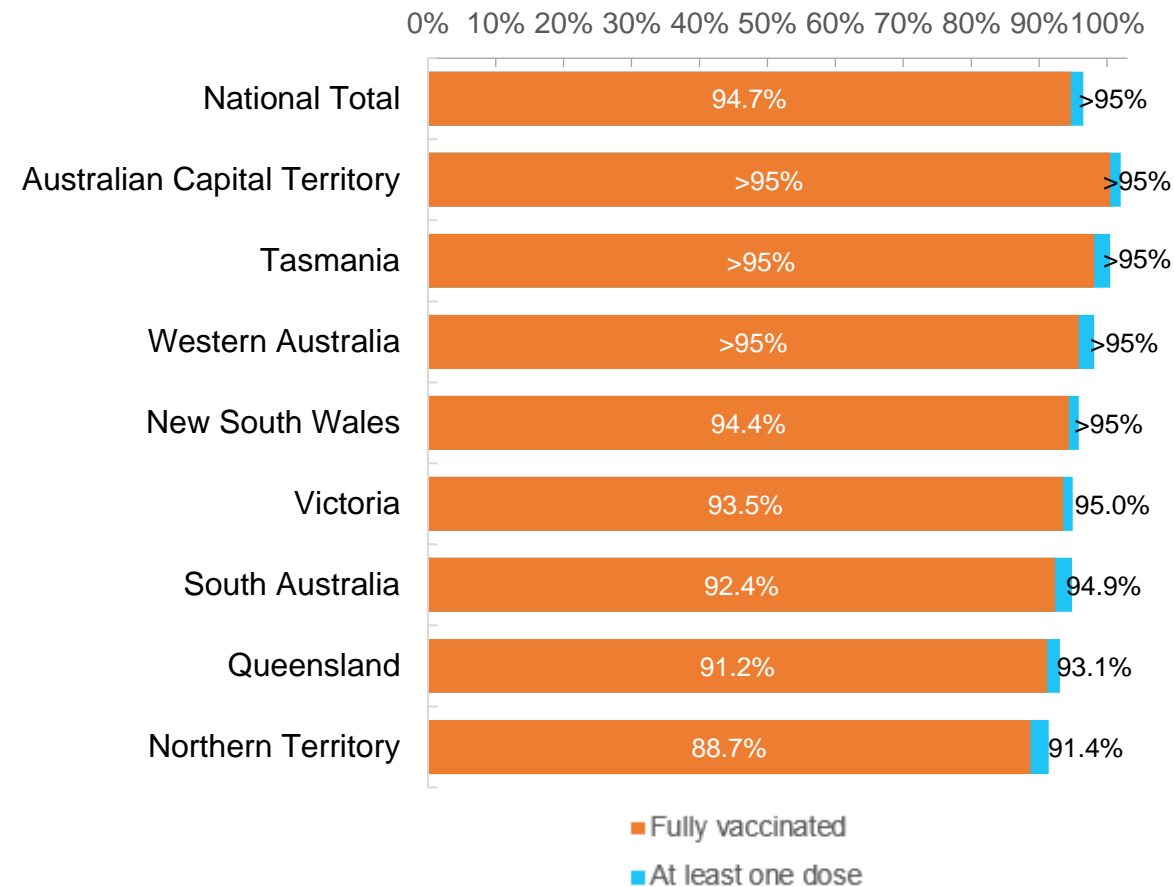


\*Not an indication of percentage vaccinated, numbers will exceed 100 due to multiple doses required per person of the population. All doses are included for those aged 12 and above, and are based on vaccination provider location.

Data as at:  
10 Mar 2022

Australia's COVID-19  
Vaccine Roadmap

First and Second Doses by residential location





# Aboriginal and Torres Strait Islander peoples

## Number of people vaccinated

Data as at:  
08 Mar 2022  
Updated weekly

Australia's COVID-19  
Vaccine Roadmap



**433,759**

people over the age of 16  
have had at least one dose

**83.6%**

of people over the age of 16  
have had at least one dose



**409,697**

people over the age of 16  
are fully vaccinated

**79.0%**

of people over the age of 16 are  
fully vaccinated



People aged 12 – 15 years

**48,162**

**41,564**

**67.9%**

At least one dose

**58.6%**

Fully vaccinated

### 177 Aboriginal community controlled health services (ACCHS)

0#

50

27

44

12

3

21

20

**ACT**

**NSW**

**NT**

**QLD**

**SA**

**TAS**

**VIC**

**WA**

Medicare Address State <sup>##</sup>	Individuals Dose 1	Individuals Dose 1 %	Individuals Dose 2	Individuals Dose 2 %
Australian Capital Territory	4,848	91.4%	4,721	89.0%
New South Wales	134,659	86.6%	131,311	84.4%
Northern Territory	42,080	88.9%	39,420	83.3%
Queensland	114,424	80.7%	107,675	76.0%
South Australia	19,667	79.2%	17,966	72.3%
Tasmania	14,001	88.3%	13,491	85.0%
Victoria	35,211	89.5%	34,292	87.1%
Western Australia	52,266	83.2%	46,258	73.6%
Unknown/Other Territories	16,603	64.4%	14,563	56.5%
<b>Totals</b>	<b>433,759</b>	<b>83.6%</b>	<b>409,697</b>	<b>79.0%</b>

Source: Australian Immunisation Register

\*Identifying as Aboriginal and Torres Strait Islander is optional and the estimated population may be under reported.

\*\*Includes all Aboriginal and Torres Strait Islander peoples who have received a vaccination, not limited to those administered in an ACCHS setting

#ACCHS in the ACT are currently operating as a Commonwealth Vaccine Clinics so not included to avoid double counting

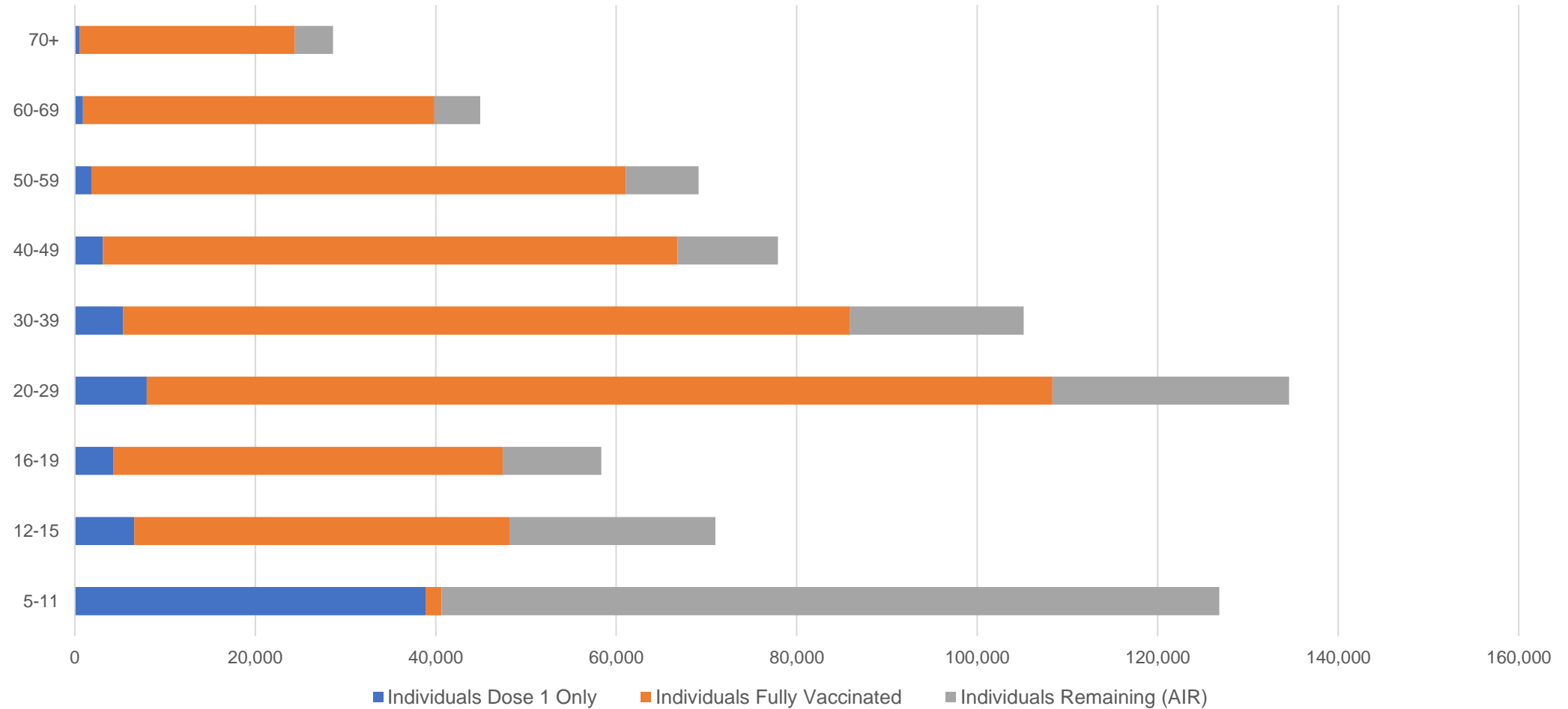
##The above table includes all identified Aboriginal and Torres Strait Islander people who are aged 16 and above by their state of residence.

# Aboriginal and Torres Strait Islander peoples

## Number of people vaccinated by age

Data as at:  
08 Mar 2022  
Updated weekly

Australia's COVID-19  
Vaccine Roadmap



Source: Australian Immunisation Register

# Commonwealth primary care

Data as at:  
10 Mar 2022

Australia's COVID-19  
Vaccine Roadmap



## Primary care vaccine administration sites

<b>5,783</b>	<b>127</b>	<b>177</b>	<b>3,572</b>
GPs	CVCs	ACCHS	Pharmacies



**33,364,809** total vaccine doses administered  
primary care settings as at 10 March  
**+ 72,767** recorded in the last 24 hours

## Primary care vaccinations by provider type

	Doses administered	Daily increase	7 day increase
General Practice* includes other Commonwealth	27,152,265	48,585	255,092
Pharmacy	6,212,544	24,182	139,125

**NSW**  
**11,597,777**  
(+19,913 daily increase)

**VIC**  
**8,332,157**  
(+17,808 daily increase)

**QLD**  
**6,418,616**  
(+14,677 daily increase)

**WA**  
**3,436,338**  
(+11,872 daily increase)

**TAS**  
**614,962**  
(+1,899 daily increase)

**SA**  
**1,980,465**  
(+4,411 daily increase)

**ACT**  
**526,648**  
(+1,041 daily increase)

**NT**  
**200,207**  
(+432 daily increase)

**257,639**

doses administered to persons  
residing in other territories or with  
missing residential information

\*General practice includes Commonwealth Vaccination Clinics, Aboriginal Community Health Centres, Royal Flying Doctor Service and other Commonwealth vaccination facilities

Source: Australian Immunisation Register

Data as at:  
10 Mar 2022

# Commonwealth aged care and disability doses administered



**1,258,083** (+ 1,302 last 24 hours)

Total vaccine doses administered in aged care and disability facilities as at 10 March

Number of doses administered as part of the Commonwealth aged and disability care rollout

**NSW**  
**557,272**  
(+458 daily increase)

**VIC**  
**234,668**  
(+154 daily increase)

**QLD**  
**198,772**  
(+271 daily increase)

**WA**  
**103,691**  
(+278 daily increase)

**TAS**  
**22,414**  
(+2 daily increase)

**SA**  
**83,907**  
(+9 daily increase)

**ACT**  
**16,489**  
(-8# daily increase)

**NT**  
**7,389**  
(+7 daily increase)

**33,481**

doses administered to persons  
residing in other territories or with  
missing residential information

\*Sourced from the Australian Immunisation Register. Includes all persons vaccinated at participating residential aged care, disability and related industry settings.

\*\*State level breakdown indicates the residential location and may not align to the state in which the vaccination occurred.

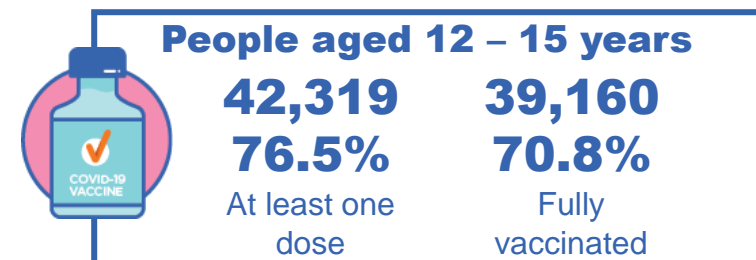
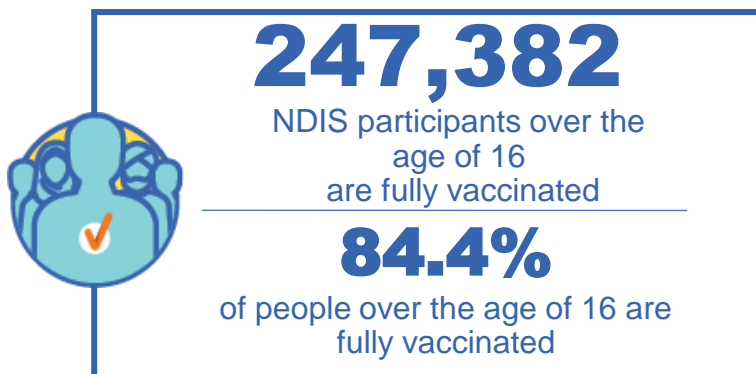
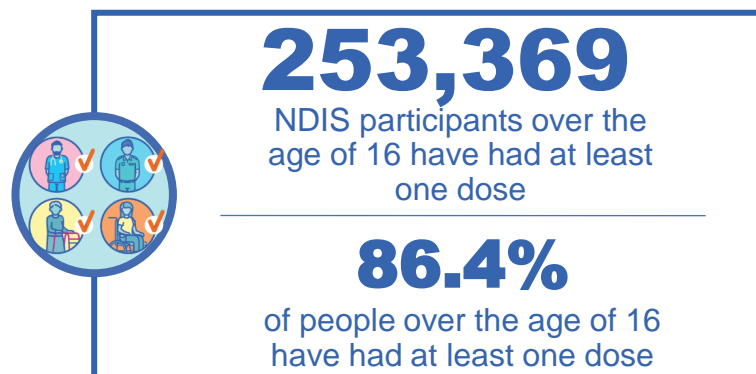
# Numbers are calculated as difference in daily cumulative reported numbers to allow for historical corrections in all data sources. This can occasionally result in negative numbers, such as for ACT, where historical details about doses have been updated.

Source: Australian Immunisation Register

# National Disability Insurance Scheme (NDIS) reported vaccinations

Data as at:  
10 March 2022  
Updated weekly

Australia's COVID-19  
Vaccine Roadmap



## NDIS participant vaccinations

	People aged 16+ with at least one dose	People aged 16+ fully vaccinated	% People aged 16+ with at least one dose	% People aged 16+ fully vaccinated
ACT	4,815	4,744	88.8%	87.5%
NSW	78,108	76,761	87.1%	85.6%
NT	2,200	2,106	77.1%	73.8%
QLD	49,751	48,519	84.6%	82.5%
SA	20,615	19,943	84.0%	81.3%
TAS	6,345	6,147	86.3%	83.6%
VIC	67,537	66,176	87.7%	85.9%
WA	23,998	22,986	87.2%	83.5%
National	253,369	247,382	86.4%	84.4%

Source: Linkage between National Disability Insurance Agency data and the Australian Immunisation Register. Total NDIS participant numbers as at 28th February. Australian Immunisation Register data as at 9 March. Includes all participants regardless of residence type.

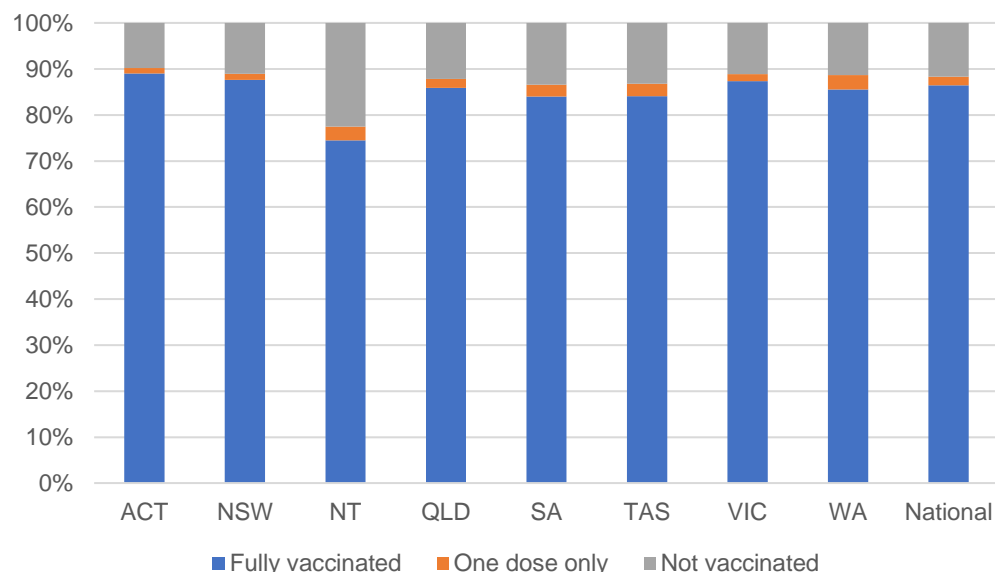
# National Disability Insurance Scheme (NDIS) reported vaccinations

Data as at:  
10 March 2022  
Updated Weekly

Australia's COVID-19  
Vaccine Roadmap

NATIONAL	Total people with at least one dose	People fully vaccinated	Total number of individuals in cohort	% People with at least one dose	% People fully vaccinated
NDIS participants living in disability accommodation	20,598	20,191	23,352	88.2%	86.5%

## NDIS participants in disability and aged care accommodation



Source: Linkage between National Disability Insurance Agency data and the Australian Immunisation Register. Includes participants residing in disability accommodation only.

Source: Total NDIS participant numbers as at 28th February. Participant data as at 9 March. Australian Immunisation Register data as at 9 March. Worker data as at 10 March.

## NDIS workforce vaccinations

	NDIS workers with at least one dose	NDIS workers fully vaccinated	% NDIS workers with at least one dose	% NDIS workers fully vaccinated
NSW	120,178	117,760	97.9%	96.0%
VIC	116,128	108,193	98.2%	91.5%
QLD	68,810	67,813	97.3%	95.9%
WA	32,680	30,259	98.4%	91.1%
SA	35,209	32,003	98.1%	89.1%
TAS	10,778	10,476	99.6%	96.8%
ACT	3,550	3,519	99.6%	98.8%
NT	3,481	3,288	99.7%	94.1%
<b>TOTAL</b>	<b>390,814</b>	<b>373,311</b>	<b>98.0%</b>	<b>93.6%</b>

Source: the NDIS Commission has established a requirement for registered NDIS providers who provide intensive disability support services to report on the vaccination status of workers they employ, or otherwise engage, to deliver NDIS-funded supports and services, and who are required to be vaccinated in accordance with in-force state and territory public health orders. The statistics reflect data reported to the NDIS Commission by registered NDIS providers and should be considered indicative and subject to change

Note: Some registered NDIS providers are yet to report on the vaccination status of their workforce. The NDIS Commission is working with those providers around reporting requirements.

Remaining workers not included include those exempt from vaccination requirements, workers whose vaccination status is not yet verified by the provider (such as workers on leave) and provider reporting anomalies.

# Residential aged care vaccination rollout

Australia's COVID-19  
Vaccine Roadmap

Data as at:  
10 Mar 2022  
Updated weekly

Residential aged care facilities status

100%

Commonwealth facilities  
visited (2,537 planned sites)

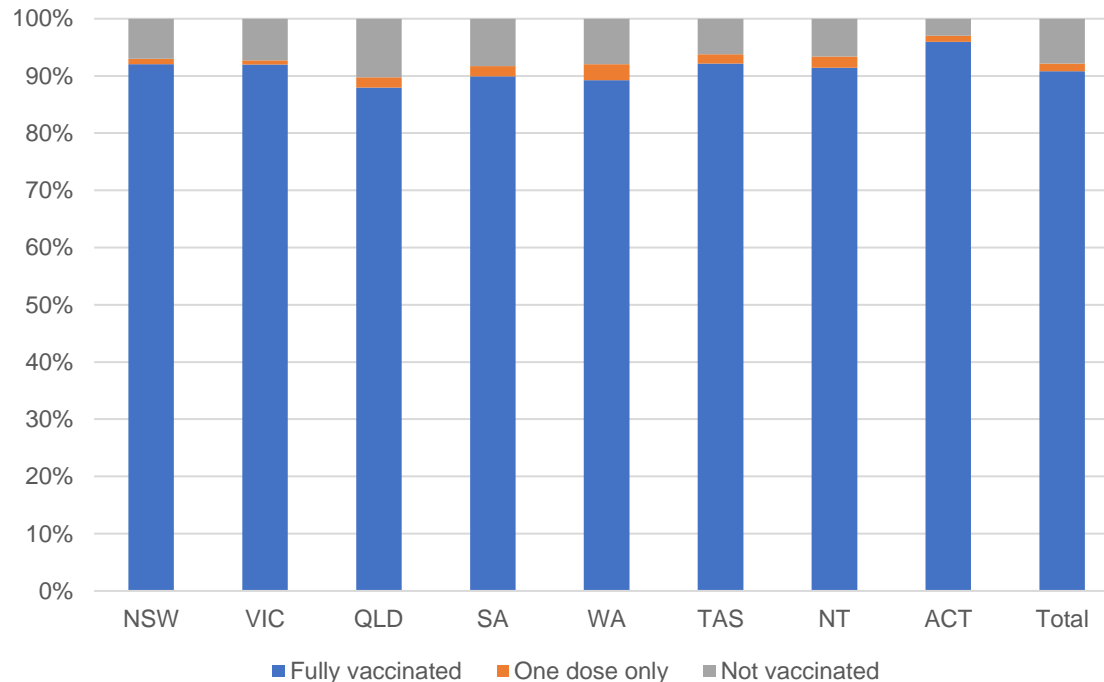
173,652

People fully vaccinated

176,173

People with at least  
one dose

## Aged care resident vaccinations



## Aged care worker vaccinations

Jurisdictions	Total workers with at least one dose	Workers fully vaccinated	% Workers with at least one dose	% Workers fully vaccinated
NSW	78,694	78,682	98.4%	98.4%
VIC	68,396	68,395	98.1%	98.1%
QLD	48,200	48,198	98.0%	98.0%
SA	26,738	26,714	98.8%	98.7%
WA	23,879	23,877	99.7%	99.7%
TAS	7,799	7,799	99.9%	99.9%
NT	870	870	99.9%	99.9%
ACT	3,063	3,063	100.0%	100.0%
Total	257,639	257,598	98.5%	98.5%

Source: My Aged Care Portal vaccination progress

\*Status updates are provided by facilities at least once per week. Reporting is updated Monday to Friday to encompass different facility updates being made on different days.

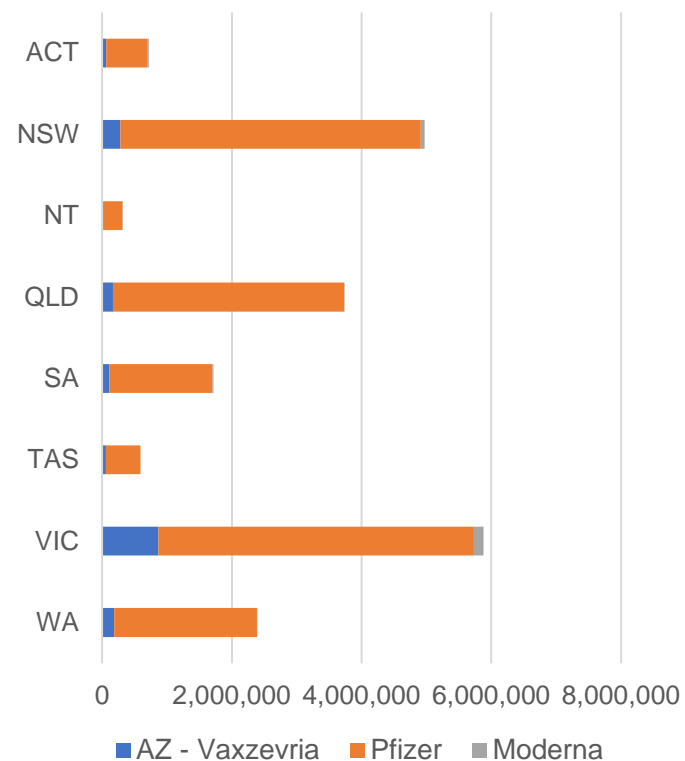
Data is sourced directly from Aged Care Service Providers and is not drawn or closely aligned with data from AIR due to inconsistencies and potential lags in uploading of records.



Data as at:  
10 Mar 2022

## Jurisdiction administered

Total vaccine doses administered in State and Territory clinics as at 10 March



**20,311,179** total vaccine doses administered  
in State and Territory clinics as at 10 March  
+ **18,845** recorded in the last 24 hours  
+ **122,291** recorded in the last 7 days

**NSW**  
**4,974,754**  
(+3,422 daily  
increase)

**VIC**  
**5,879,135**  
(+4,787 daily  
increase)

**QLD**  
**3,732,191**  
(+2,548 daily  
increase)

**WA**  
**2,385,481**  
(+2,435 daily  
increase)

**TAS**  
**590,094**  
(+611 daily  
increase)

**SA**  
**1,718,903**  
(+2,138 daily  
increase)

**ACT**  
**718,254**  
(+1,994 daily  
increase)

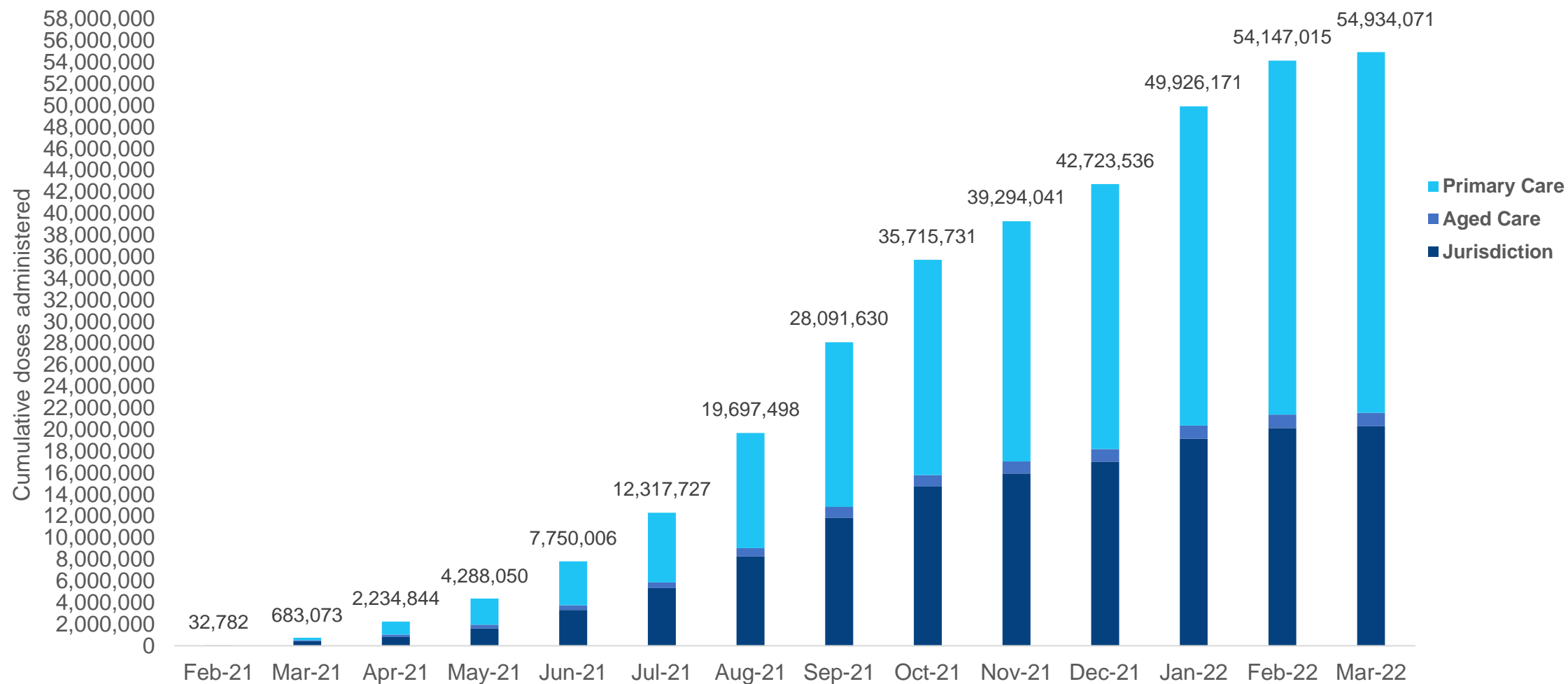
**NT**  
**312,367**  
(+910 daily  
increase)

\*Sourced from the Australian Immunisation Register. Numbers are calculated as difference in daily cumulative reported numbers to allow for historical corrections.

# Cumulative doses administered by channel

Data as at:  
10 Mar 2022

Australia's COVID-19  
Vaccine Roadmap



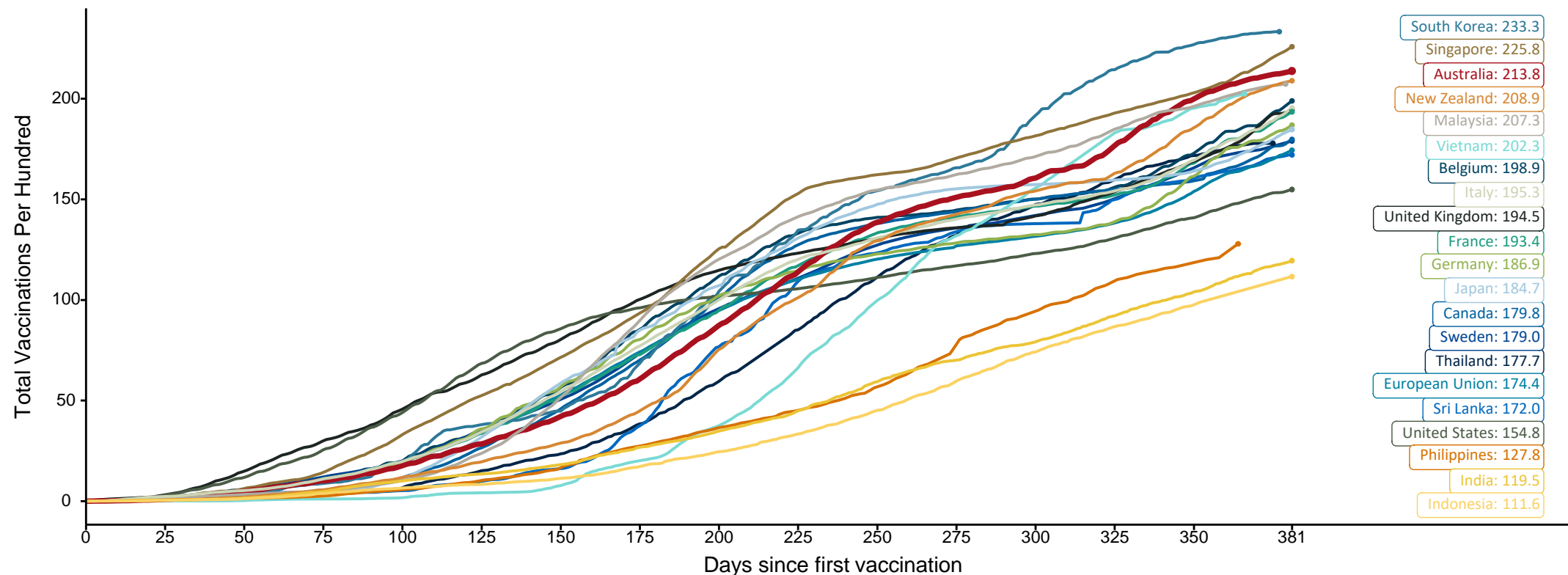
Source: Australian Immunisation Register

## Doses at equivalent stages of rollout (Day 381)

Data as at:  
10 Mar 2022

The x-axis is truncated at the length of Australia's vaccination program. Countries with intermittent reporting have had their doses per 100 imputed to Australia's current stage of rollout. Israel excluded as it is beyond scale of the graph

Cumulative doses administered (10 Mar): **54,934,071**



Note: From 11 January 2022, data for Australia includes all doses administered to people 5 and over. Prior to 11 January, data was for 12 and over.

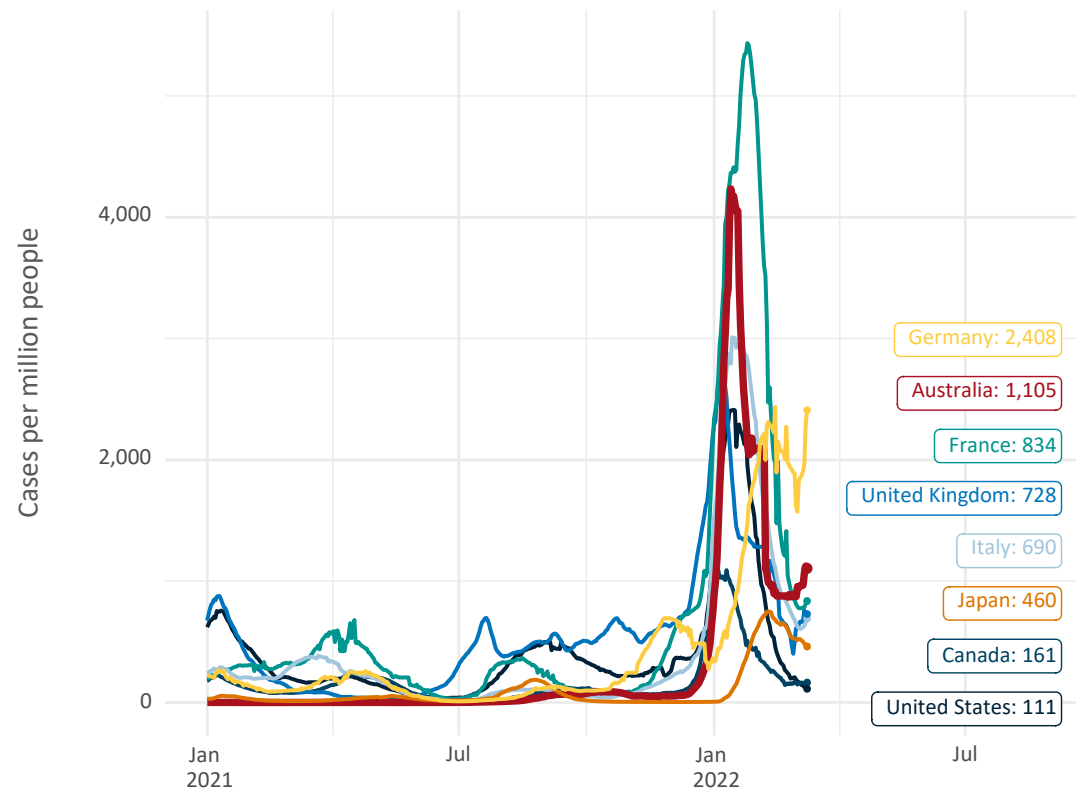
Source: Department of Health (Australia), Our World in Data (international)

Latest data: 10 March

Data as at:  
10 Mar 2022

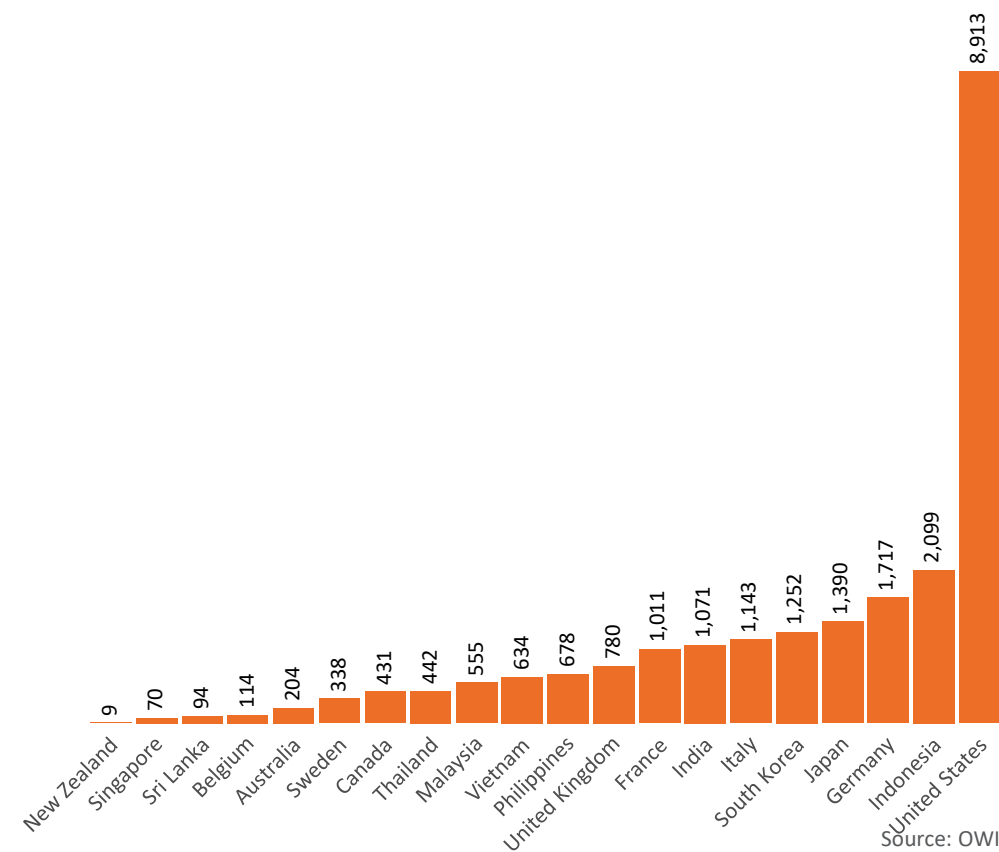
# International data – COVID-19

New daily cases per million in 2021, Australia and G7 countries  
Smoothed - 7 day average



Source: OWID  
Data downloaded: 11 Mar 2022 07:12  
Latest data: 09 Mar 2022

COVID-19 deaths in past 7 days - Australia and select countries



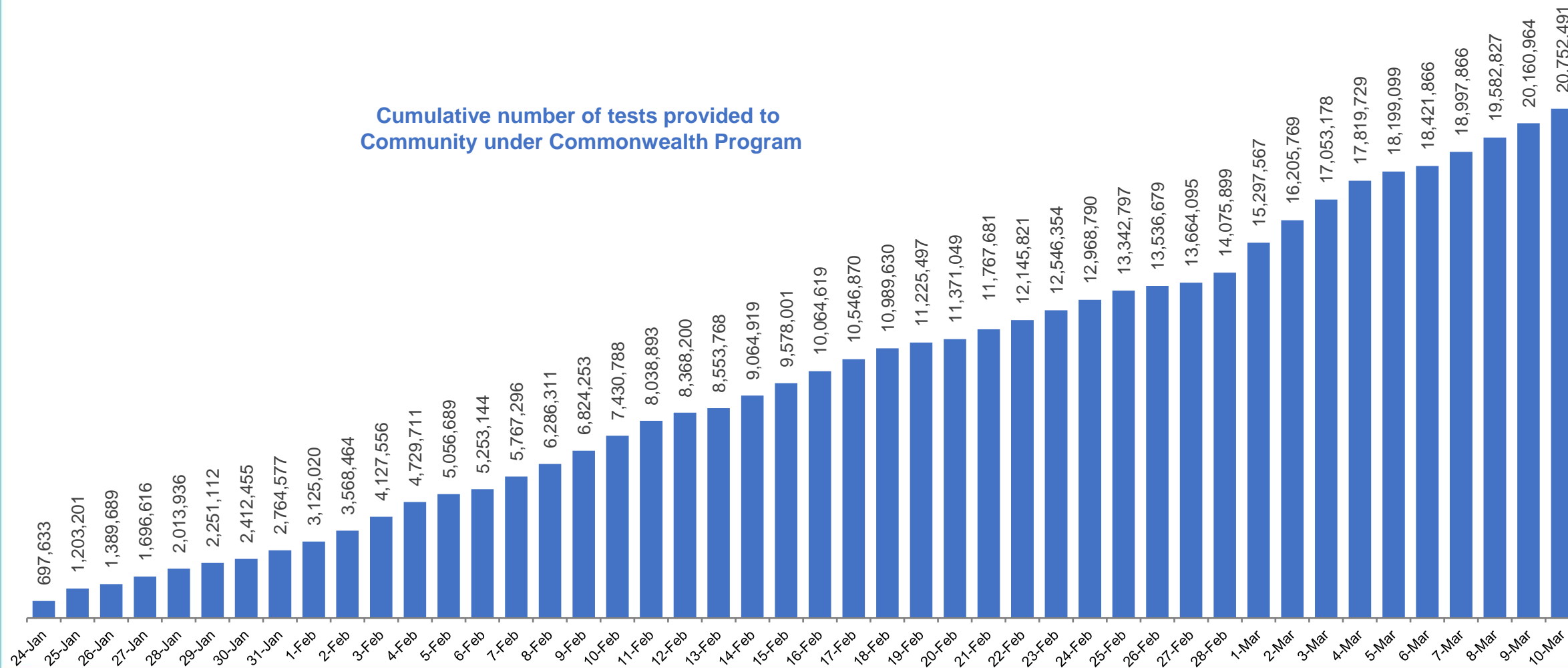
Source: OWID  
Data downloaded: 11 Mar 2022 07:12  
Latest data: 09 Mar 2022

# Concessional rapid antigen test program

**5,602 pharmacies** have delivered over **20.7 million rapid antigen tests** to more than **3.5m eligible concession card holders** under the Government's concessional rapid antigen test program.

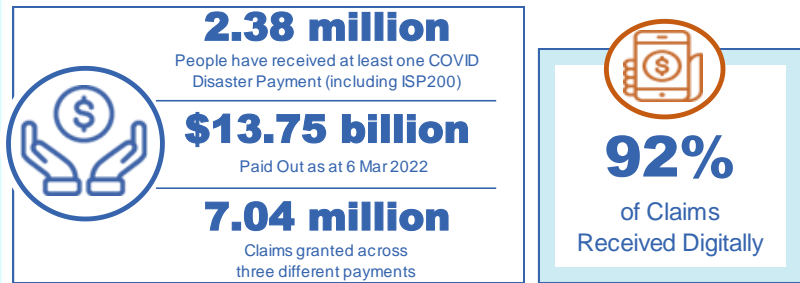
**Data as at  
10 Mar 2022**

Cumulative number of tests provided to  
Community under Commonwealth Program



# Pandemic Response Payments

Data as at midnight: 6 Mar 2022  
Updated weekly



COVID Disaster Payment:	5.89 million claims received - 2.19 million individuals paid a total of \$12.59 billion.
\$200 Income Support Payment:	353,000 claims received - 183,000 individuals paid a total of \$268.9 million.
Pandemic Leave Disaster Payment:	1,214,000 claims received - 800,000 individuals paid a total of \$895.0 million.

THREE PAYMENTS AVAILABLE

COVID Disaster Payment

assisting during a lockdown event in a Commonwealth hotspot.

Income Support Payment \$200

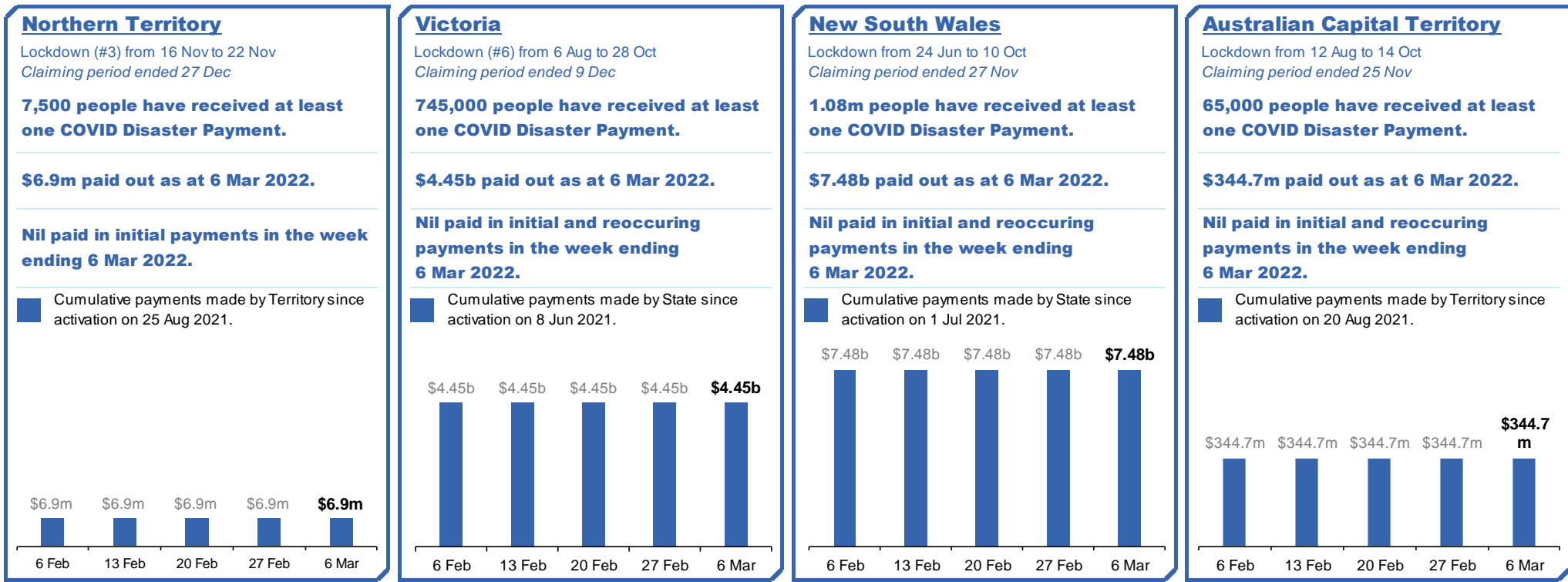
for income support recipients who lost at least 8 hours of work.

Pandemic Leave Disaster Payment

for those who have to self-isolate, quarantine or care.

For more information visit: [servicesaustralia.gov.au](https://servicesaustralia.gov.au)

## COVID-19 DISASTER PAYMENTS



# Pandemic Response Payments (continued)

Data as at midnight: 6 Mar 2022  
Updated weekly

## COVID-19 DISASTER PAYMENTS

### Tasmania

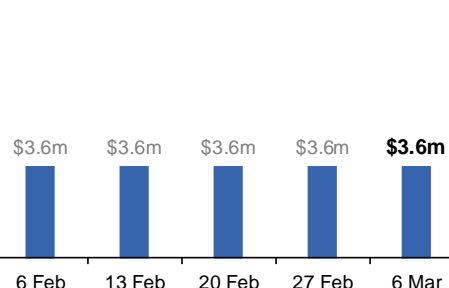
Lockdown from 15 Oct to 18 Oct  
Claiming period ended 12 Nov

**6,900 people have received at least one COVID Disaster Payment.**

**\$3.6m paid out as at 6 Mar 2022.**

**Nil paid in initial and reoccurring payments in the week ending 6 Mar 2022.**

Cumulative payments made by State since activation on 22 Oct 2021.



### Queensland

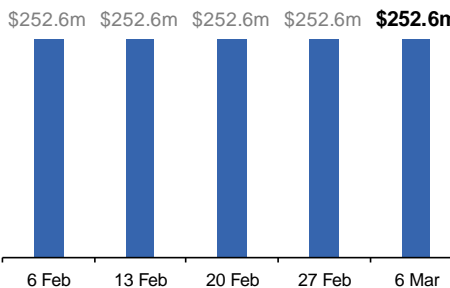
Lockdown from 31 Jul to 11 Aug  
Claiming period ended 28 Aug

**196,000 people have received at least one COVID Disaster Payment.**

**\$252.6m paid out as at 6 Mar 2022.**

**Nil paid in initial and reoccurring payments in the week ending 6 Mar 2022.**

Cumulative payments made by State since activation on 7 Aug 2021.



### South Australia

Lockdown from 21 to 27 Jul  
Claiming period ended 17 Aug

**86,000 people have received at least one COVID Disaster Payment.**

**\$48.2m paid out as at 6 Mar 2022.**

**Nil paid in initial and reoccurring payments in the week ending 6 Mar 2022.**

Cumulative payments made by State since activation on 28 Jul 2021.

