



Australian Government
Operation COVID Shield

COVID-19 Vaccine Roll-out

01 March 2022

Data as at:
28 Feb 2022

Total vaccine doses



54,147,015 total vaccine
doses administered nationally as at 28 February
+103,432 recorded in the last 24 hours



19,860,323

people have had at least one
dose

>95%

of people over the age of 16
have had at least one dose



19,481,068

people are fully vaccinated

94.5%

of people over the age of 16 are
fully vaccinated



11,526,369

people over the age of 16
who have received more
than two doses

NSW
16,917,392
(+27,249 daily
increase)

VIC
14,318,949
(+25,359 daily
increase)

QLD
10,294,100
(+10,763 daily
increase)

WA
5,796,726
(+23,160 daily
increase)

TAS
1,202,059
(+2,419 daily
increase)

SA
3,717,773
(+7,757 daily
increase)

ACT
1,377,002
(+5,736 daily
increase)

NT
523,014
(+989 daily
increase)

*Administration state breakdown indicates state in which a vaccine was administered

**Overall dose count includes instances of more than two doses per person in a small number of cases.

Source: Australian Immunisation Register

Booster Vaccinations

Australia's COVID-19
Vaccine Roadmap

Data as at:
28 Feb 2022



156,756

Indigenous people who have
received more than two doses

48.0%

of eligible population (326,341)



154,098

Aged Care Residents who have
received more than two doses##

89.1%

of eligible population (172,940)



151,219

NDIS participants

who have received more than two doses#

66.9%

of eligible population
(226,037)

18,827

NDIS residents

81.6%

of eligible population
(23,072)



11,526,369 total people who
have received more than two doses nationally

+85,691 recorded in the last 24 hours

63.5% of people who are eligible (18,148,822)
have received more than two doses

NSW	People	% of Eligible
Cumulative	3,578,313	58.6%
Daily increase	24,022	

VIC	People	% of Eligible
Cumulative	3,144,065	63.6%
Daily increase	22,562	

QLD	People	% of Eligible
Cumulative	2,001,857	62.2%
Daily increase	9,157	

WA	People	% of Eligible
Cumulative	1,320,430	80.5%
Daily increase	18,312	

SA	People	% of Eligible
Cumulative	815,096	69.0%
Daily increase	6,536	

TAS	People	% of Eligible
Cumulative	253,965	65.2%
Daily increase	1,975	

ACT	People	% of Eligible
Cumulative	238,712	70.1%
Daily increase	1,427	

NT	People	% of Eligible
Cumulative	92,196	62.3%
Daily increase	944	

81,735

doses administered to persons
residing in other territories or with
missing residential information

*People may belong to multiple groups and could be represented in the above breakdowns multiple times.

Aged Care Residents data as at 28 February 2022. # NDIS participants data as at 24 February 2022.

Source: Australian Immunisation Register

Vaccinations by residential location

Australia's COVID-19 Vaccine Roadmap

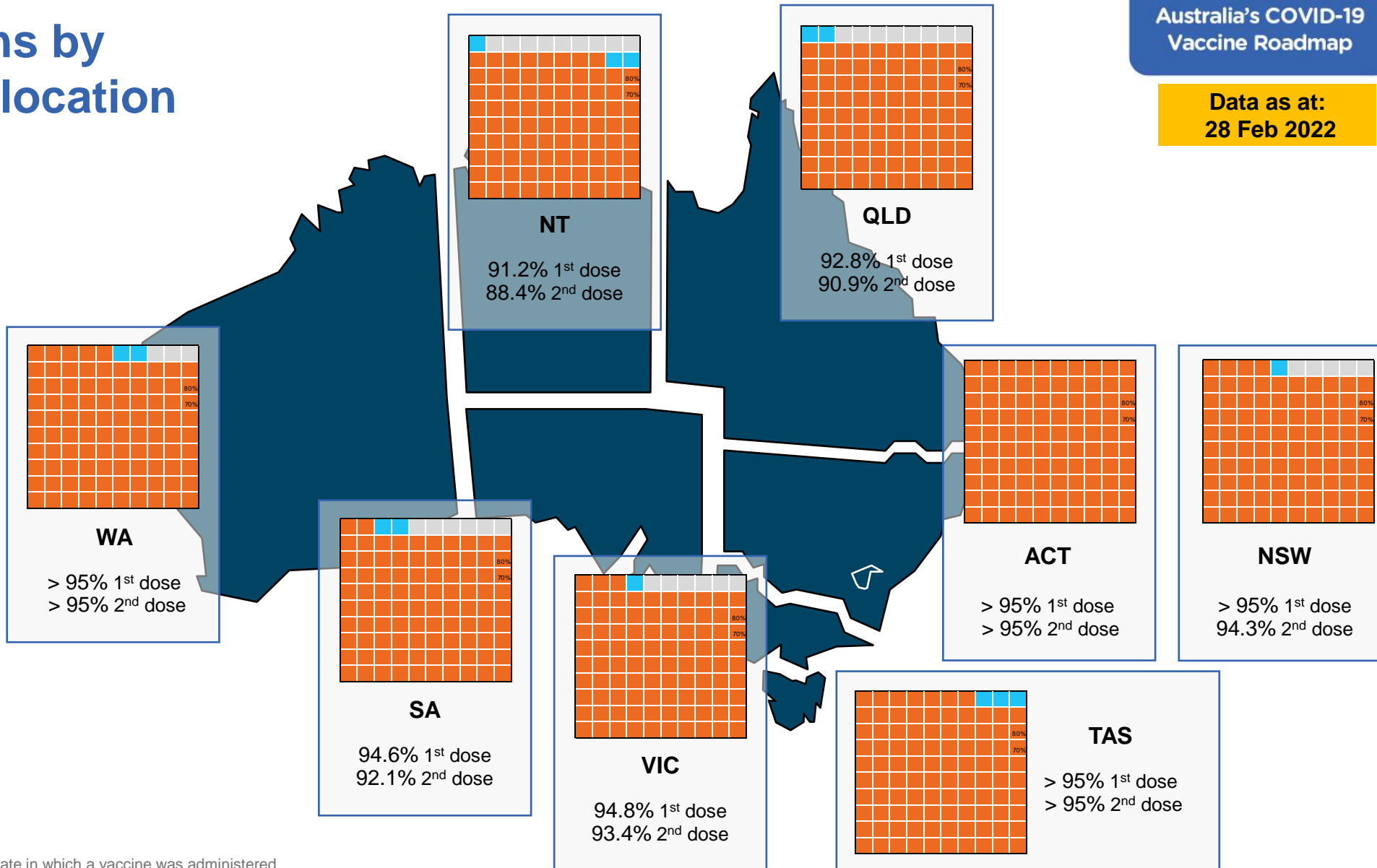
Data as at:
28 Feb 2022

First doses

Age	Today	4 weeks ago	8 weeks ago
16+	>95%	>95%	94.8%
50+	>95%	>95%	>95%
70+	>95%	>95%	>95%

Fully vaccinated

Age	Today	4 weeks ago	8 weeks ago
16+	94.5%	93.6%	92.0%
50+	>95%	>95%	>95%
70+	>95%	>95%	>95%



*Residential state may differ from the state in which a vaccine was administered

Commonwealth and Jurisdiction vaccine doses administered

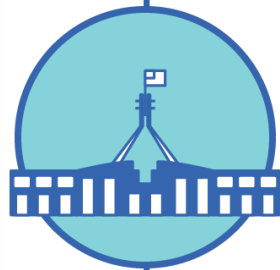
Data as at:
28 Feb 2022



54,147,015 total vaccine
doses administered nationally as at 28 February
+ 103,432 recorded in the last 24 hours



20,140,635
doses administered by state
and territory facilities
+ 19,257
recorded in the last 24 hours



34,006,380
doses administered by
commonwealth facilities
+ 84,175
recorded in the last 24 hours

32,754,514 total vaccine doses
administered in primary care settings
1,251,866 total vaccine doses
administered in aged care and disability
settings

NSW	Jurisdictions	Commonwealth
Cumulative	4,951,603	11,965,789
Daily increase	2,327	24,922

VIC	Jurisdictions	Commonwealth
Cumulative	5,836,359	8,482,590
Daily increase	4,851	20,508

QLD	Jurisdictions	Commonwealth
Cumulative	3,708,497	6,585,603
Daily increase	1,119	9,644

WA	Jurisdictions	Commonwealth
Cumulative	2,350,479	3,446,247
Daily increase	5,494	17,666

TAS	Jurisdictions	Commonwealth
Cumulative	583,974	618,085
Daily increase	416	2,003

SA	Jurisdictions	Commonwealth
Cumulative	1,701,391	2,016,382
Daily increase	2,031	5,726

ACT	Jurisdictions	Commonwealth
Cumulative	701,962	675,040
Daily increase	2,400	3,336

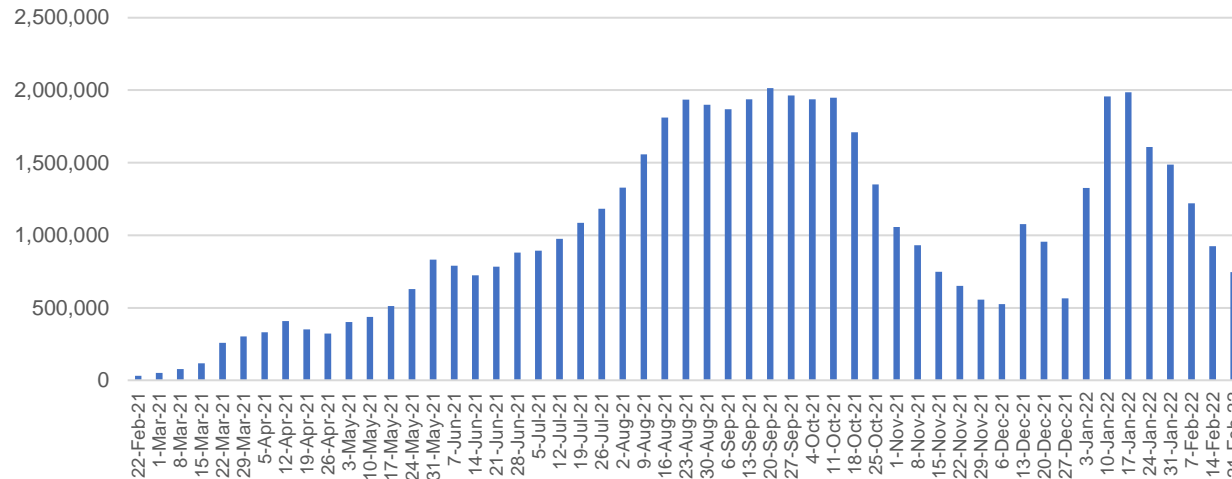
NT	Jurisdictions	Commonwealth
Cumulative	306,370	216,644
Daily increase	619	370

Vaccine milestone charts

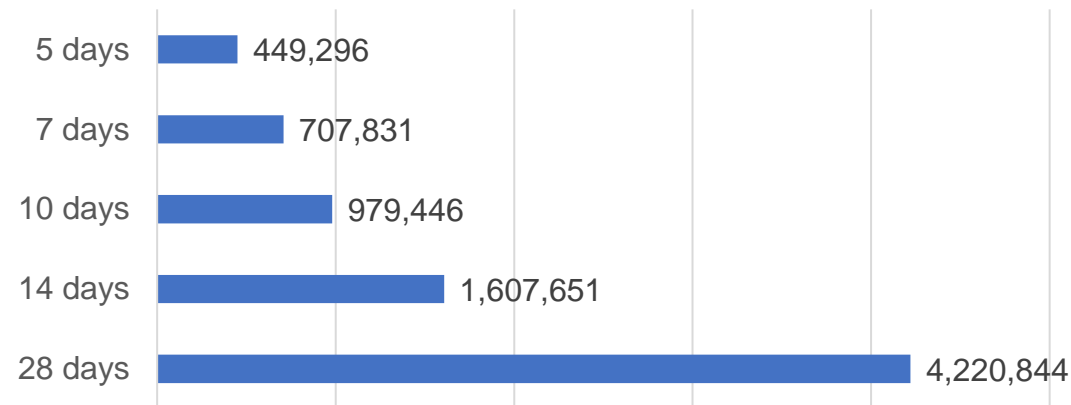
Data as at:
28 Feb 2022

Australia's COVID-19
Vaccine Roadmap

Doses Administered by Week

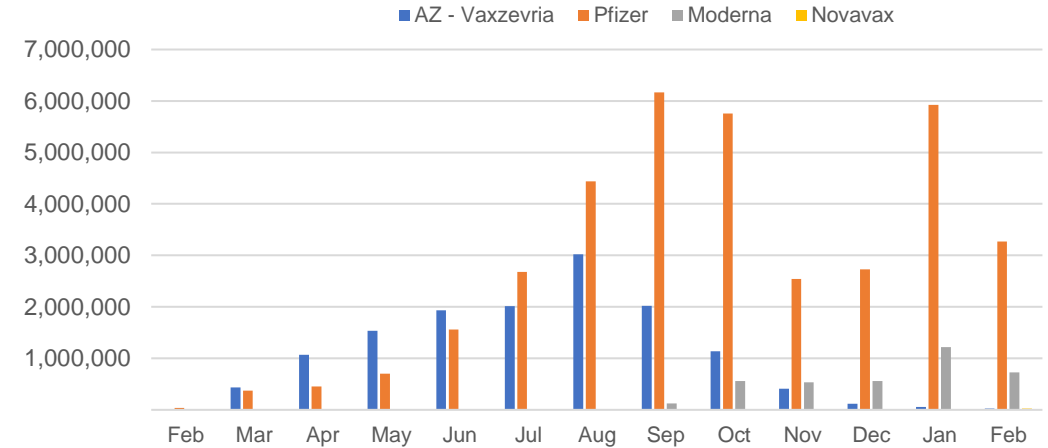


Doses Reported

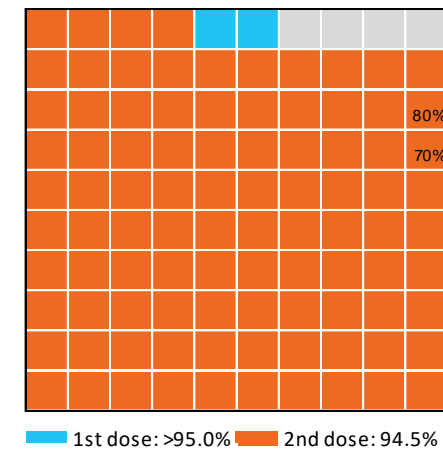


*Sourced from the Australian Immunisation Register.

Doses by administration month and vaccine type



Eligible population percentage coverage



*Each square represents 1% of the national population.
Squares are filled as milestones are achieved.

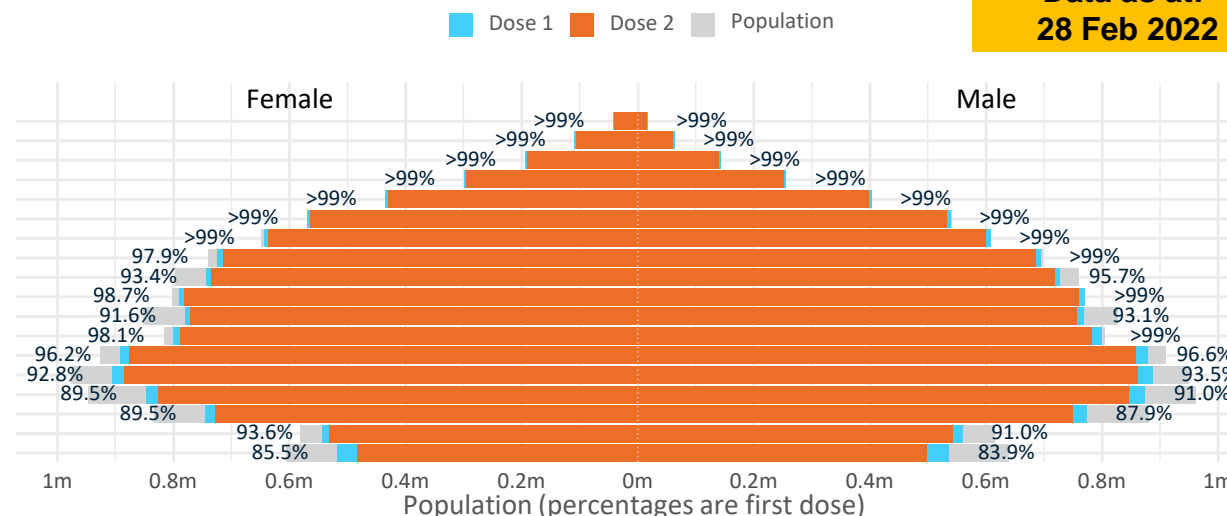
Doses by age and sex

First and second doses by age and sex

Australia's COVID-19
Vaccine Roadmap

Data as at:
28 Feb 2022

Age	Dose 1	Dose 2
95+	58,519 (>99%)	55,017 (>99%)
90-94	172,236 (>99%)	166,098 (>99%)
85-89	336,573 (>99%)	328,681 (>99%)
80-84	554,859 (>99%)	546,429 (>99%)
75-79	837,293 (>99%)	827,620 (>99%)
70-74	1,108,567 (>99%)	1,096,139 (>99%)
65-69	1,253,203 (>99%)	1,237,480 (98.4%)
60-64	1,419,178 (98.8%)	1,400,988 (97.5%)
55-59	1,472,370 (94.6%)	1,453,501 (93.4%)
50-54	1,562,826 (>99%)	1,542,453 (98.6%)
45-49	1,549,833 (92.4%)	1,527,298 (91.1%)
40-44	1,600,991 (98.8%)	1,572,411 (97.1%)
35-39	1,774,111 (96.7%)	1,737,048 (94.7%)
30-34	1,799,907 (93.6%)	1,753,199 (91.1%)
25-29	1,731,261 (90.8%)	1,680,157 (88.1%)
20-24	1,524,616 (89.0%)	1,481,744 (86.5%)
16-19	1,103,980 (92.3%)	1,074,805 (89.9%)
12-15	1,053,898 (84.7%)	981,653 (78.9%)

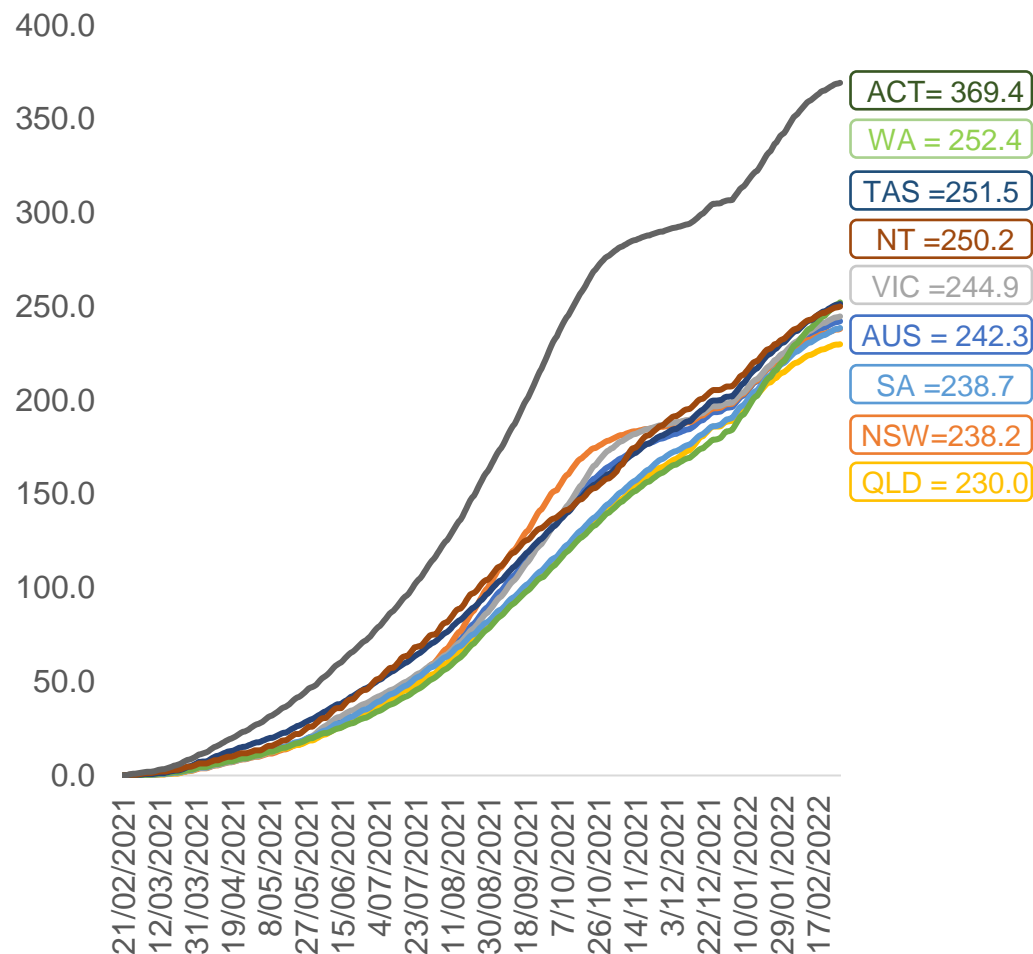


	AUS	ACT	NSW	NT	QLD	SA	TAS	VIC	WA
16 and over - dose 1	19,860,323	350,728	6,289,398	173,850	3,818,012	1,363,121	441,310	5,127,913	2,066,897
16 and over - dose 2	19,481,068	345,392	6,194,254	168,507	3,738,312	1,326,398	430,623	5,052,043	2,013,908
16 and over - population	20,619,959*	344,037	6,565,651	190,571	4,112,707	1,440,400	440,172	5,407,574	2,114,978
16 and over % with dose 1	96.32%	>99%	95.79%	91.23%	92.83%	94.63%	>99%	94.83%	97.73%
16 and over % with dose 2	94.48%	>99%	94.34%	88.42%	90.90%	92.09%	97.83%	93.43%	95.22%
5 to 11 - dose 1	1,141,677	31,035	340,701	12,620	203,972	81,806	27,781	314,930	121,801
5 to 11 - dose 2	20,519	288	8,416	135	3,198	483	93	6,611	1,160
5 to 11 - population	2,276,638	39,789	716,460	24,750	478,731	148,816	45,033	578,499	244,154
5 to 11 % with dose 1	50.15%	78.00%	47.55%	50.99%	42.61%	54.97%	61.69%	54.44%	49.89%
5 to 11 % with dose 2	0.90%	0.72%	1.17%	0.55%	0.67%	0.32%	0.21%	1.14%	0.48%
12 to 15 - dose 1	1,053,898	20,075	326,233	10,898	207,774	68,218	22,845	276,119	112,521
12 to 15 - dose 2	981,653	19,131	308,522	9,610	191,146	63,294	21,275	261,363	99,409
12 to 15 - population	1,243,990	19,693	390,330	13,060	270,146	82,747	26,308	308,611	132,869
12 to 15 % with dose 1	84.72%	>99%	83.58%	83.45%	76.91%	82.44%	86.84%	89.47%	84.69%
12 to 15 % with dose 2	78.91%	97.15%	79.04%	73.58%	70.76%	76.49%	80.87%	84.69%	74.82%

*National population will not equal sum of listed jurisdictions due to a small number of people counted in national population residing in some 'other' territories. Sum of state doses will not add to national total as some records are unable to be geocoded to a State or Territory.
Doses sourced from Australian Immunisation Register, population from ABS ERP June 2020

Vaccinations by location

Cumulative total doses administered vs eligible state populations*

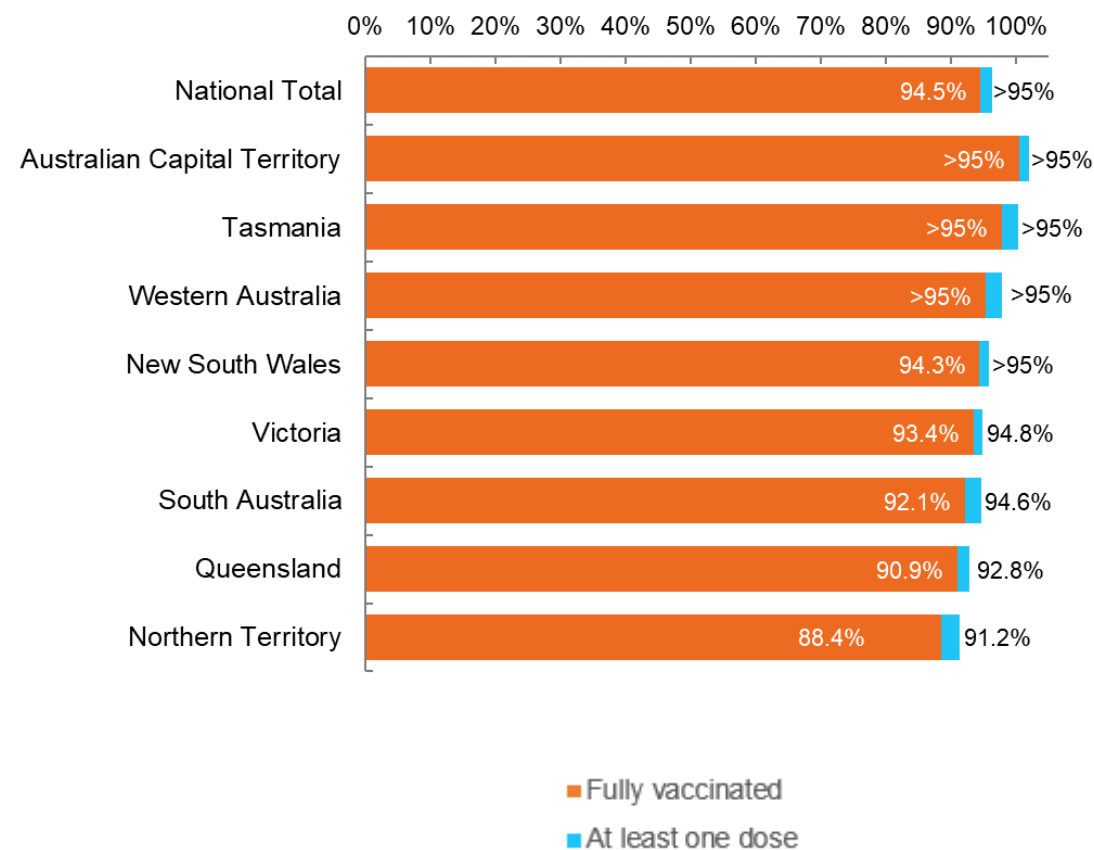


*Not an indication of percentage vaccinated, numbers will exceed 100 due to multiple doses required per person of the population. All doses are included for those aged 12 and above, and are based on vaccination provider location.

Data as at:
28 Feb 2022

Australia's COVID-19
Vaccine Roadmap

First and Second Doses by residential location



Aboriginal and Torres Strait Islander peoples

Number of people vaccinated

Data as at:
22 Feb 2022
Updated weekly

Australia's COVID-19
Vaccine Roadmap



431,220

people over the age of 16
have had at least one dose

83.1%

of people over the age of 16
have had at least one dose



405,102

people over the age of 16
are fully vaccinated

78.0%

of people over the age of 16 are
fully vaccinated



**47,614
(67.1%)**

people aged 12-15 years
have had at least one dose

176 Aboriginal community controlled health services (ACCHS)

0#	50	27	44	12	3	21	19
ACT	NSW	NT	QLD	SA	TAS	VIC	WA

Medicare Address State ^{##}	Individuals Dose 1	Individuals Dose 1 %	Individuals Dose 2	Individuals Dose 2 %
Australian Capital Territory	4,864	91.3%	4,727	88.7%
New South Wales	134,769	86.5%	131,329	84.3%
Northern Territory	41,851	88.5%	38,873	82.2%
Queensland	113,793	80.3%	106,457	75.1%
South Australia	19,552	78.4%	17,774	71.3%
Tasmania	14,101	88.0%	13,534	84.4%
Victoria	35,162	89.3%	34,237	86.9%
Western Australia	50,742	80.7%	43,986	70.0%
Unknown/Other Territories	16,386	63.4%	14,185	54.9%
Totals	431,220	83.1%	405,102	78.0%

Source: Australian Immunisation Register

*Identifying as Aboriginal and Torres Strait Islander is optional and the estimated population may be under reported.

**Includes all Aboriginal and Torres Strait Islander peoples who have received a vaccination, not limited to those administered in an ACCHS setting

#ACCHS in the ACT are currently operating as a Commonwealth Vaccine Clinics so not included to avoid double counting

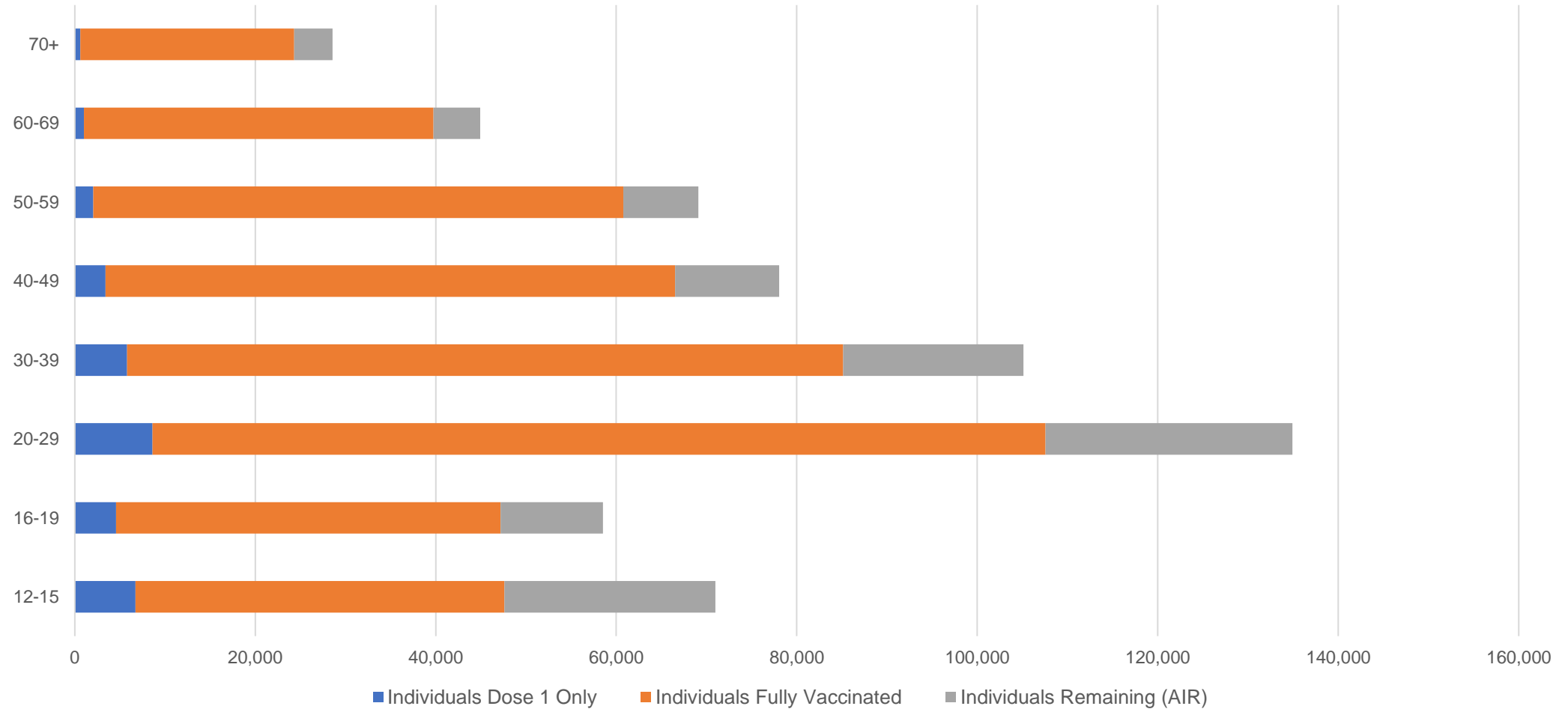
##The above table includes all identified Aboriginal and Torres Strait Islander people who are aged 16 and above by their state of residence.

Aboriginal and Torres Strait Islander peoples

Number of people vaccinated by age

Data as at:
22 Feb 2022
Updated weekly

Australia's COVID-19
Vaccine Roadmap



Source: Australian Immunisation Register

Commonwealth primary care

Data as at:
28 Feb 2022

Australia's COVID-19
Vaccine Roadmap



Primary care vaccine administration sites

5,777	127	177	3,558
GPs	CVCs	ACCHS	Pharmacies



32,754,514 total vaccine doses administered
primary care settings as at 28 February
+ 83,787 recorded in the last 24 hours

Primary care vaccinations by provider type

	Doses administered	Daily increase	7 day increase
General Practice* includes other Commonwealth	26,762,773	53,163	348,967
Pharmacy	5,991,741	30,624	199,154

NSW
11,427,706
(+25,180 daily increase)

VIC
8,182,769
(+20,449 daily increase)

QLD
6,313,913
(+10,858 daily increase)

WA
3,324,404
(+17,622 daily increase)

TAS
599,409
(+1,961 daily increase)

SA
1,940,598
(+5,916 daily increase)

ACT
518,112
(+1,054 daily increase)

NT
196,207
(+532 daily increase)

251,396

doses administered to persons
residing in other territories or with
missing residential information

*General practice includes Commonwealth Vaccination Clinics, Aboriginal Community Health Centres, Royal Flying Doctor Service and other Commonwealth vaccination facilities

Source: Australian Immunisation Register

Data as at:
28 Feb 2022

Commonwealth aged care and disability doses administered



1,251,866 (+ 388 last 24 hours)

Total vaccine doses administered in aged care and disability facilities as at 28 February

Number of doses administered as part of the Commonwealth aged and disability care rollout

NSW
556,229
(+11 daily increase)

VIC
233,979
(+86 daily increase)

QLD
197,945
(-38# daily increase)

WA
101,413
(+195 daily increase)

TAS
22,349
(+3 daily increase)

SA
83,812
(+24 daily increase)

ACT
16,446
(+17 daily increase)

NT
7,373
(-3# daily increase)

32,320

doses administered to persons residing in other territories or with missing residential information

Source: Australian Immunisation Register

*Sourced from the Australian Immunisation Register. Includes all persons vaccinated at participating residential aged care, disability and related industry settings.

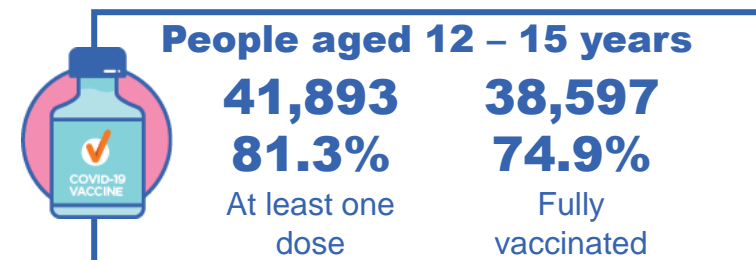
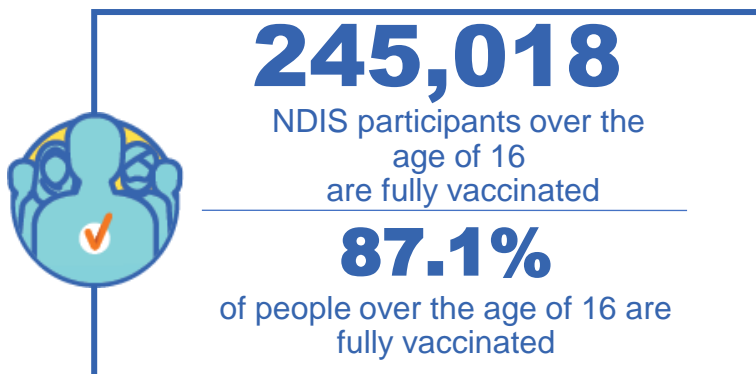
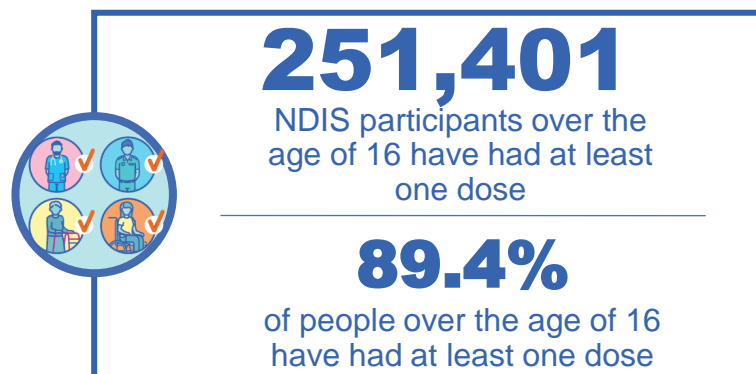
**State level breakdown indicates the residential location and may not align to the state in which the vaccination occurred.

Numbers are calculated as difference in daily cumulative reported numbers to allow for historical corrections in all data sources. This can occasionally result in negative numbers, such as for QLD and NT, where historical details about doses have been updated.

National Disability Insurance Scheme (NDIS) reported vaccinations

Data as at:
24 February 2022
Updated weekly

Australia's COVID-19
Vaccine Roadmap



NDIS participant vaccinations

	People aged 16+ with at least one dose	People aged 16+ fully vaccinated	% People aged 16+ with at least one dose	% People aged 16+ fully vaccinated
ACT	4,794	4,722	91.2%	89.8%
NSW	77,732	76,391	89.6%	88.0%
NT	2,187	2,079	80.9%	76.9%
QLD	49,286	47,943	88.7%	86.2%
SA	20,438	19,706	87.1%	84.0%
TAS	6,293	6,077	89.4%	86.3%
VIC	67,084	65,746	90.4%	88.6%
WA	23,587	22,354	89.8%	85.1%
National	251,401	245,018	89.4%	87.1%

Source: Linkage between National Disability Insurance Agency data and the Australian Immunisation Register. Total NDIS participant numbers as at 17th October. Australian Immunisation Register data as at 23 February. Includes all participants regardless of residence type.

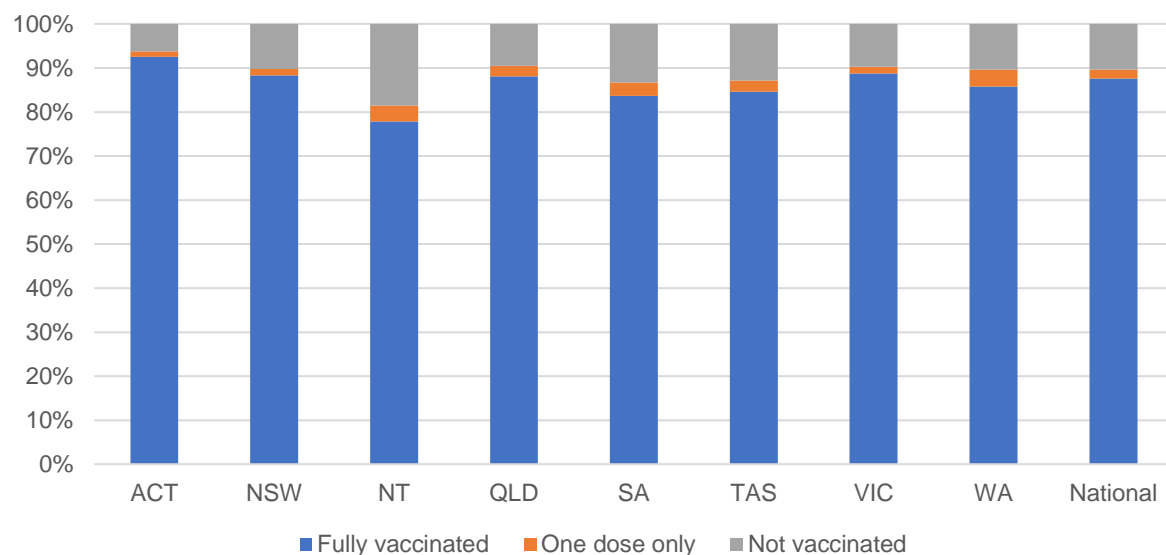
National Disability Insurance Scheme (NDIS) reported vaccinations

Data as at:
24 February 2022
Updated weekly

Australia's COVID-19
Vaccine Roadmap

NATIONAL	Total people with at least one dose	People fully vaccinated	Total number of individuals in cohort	% People with at least one dose	% People fully vaccinated
NDIS participants living in disability accommodation	20,562	20,115	22,800	90.2%	88.2%

NDIS participants in disability and aged care accommodation



Source: Linkage between National Disability Insurance Agency data and the Australian Immunisation Register. Includes participants residing in disability accommodation only.

Source: Total NDIS participant numbers as at 17th October. Participant data as at 23 February. Australian Immunisation Register data as at 23 February. Worker data as at 24 February.

NDIS workforce vaccinations

	NDIS workers with at least one dose	NDIS workers fully vaccinated	% NDIS workers with at least one dose	% NDIS workers fully vaccinated
NSW	120,272	119,703	97.6%	97.1%
VIC	106,884	105,292	98.0%	96.6%
QLD	67,644	66,591	97.2%	95.7%
WA	32,347	30,855	98.1%	93.6%
SA	34,573	33,378	97.6%	94.3%
TAS	10,711	10,574	99.5%	98.2%
ACT	3,528	3,501	99.5%	98.8%
NT	3,248	3,205	99.4%	98.1%
TOTAL	379,207	373,099	97.8%	96.2%

Source: the NDIS Commission has established a requirement for registered NDIS providers who provide intensive disability support services to report on the vaccination status of workers they employ, or otherwise engage, to deliver NDIS-funded supports and services, and who are required to be vaccinated in accordance with in-force state and territory public health orders. The statistics reflect data reported to the NDIS Commission by registered NDIS providers and should be considered indicative and subject to change

Note: Some registered NDIS providers are yet to report on the vaccination status of their workforce. The NDIS Commission is working with those providers around reporting requirements.

Remaining workers not included include those exempt from vaccination requirements, workers whose vaccination status is not yet verified by the provider (such as workers on leave) and provider reporting anomalies.

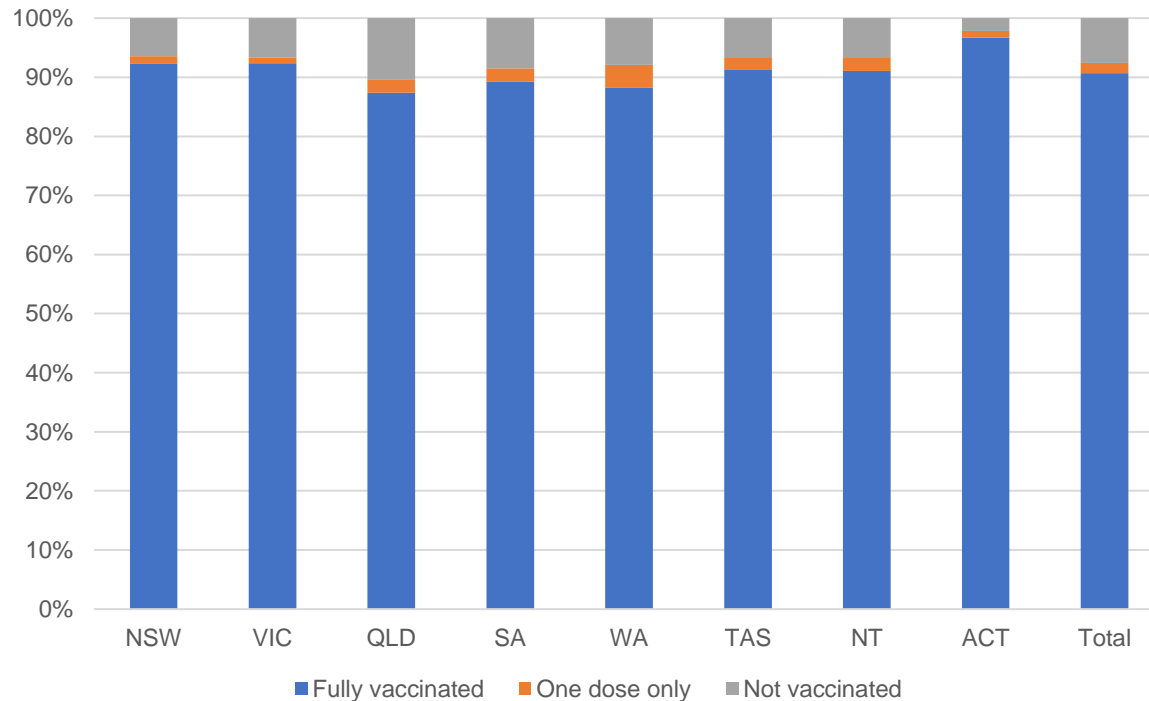
Residential aged care vaccination rollout

Australia's COVID-19
Vaccine Roadmap

Data as at:
24 Feb 2022
Updated weekly



Aged care resident vaccinations



Aged care worker vaccinations

Jurisdictions	Total workers with at least one dose	Workers fully vaccinated	% Workers with at least one dose	% Workers fully vaccinated
NSW	78,672	78,654	99.2%	99.2%
VIC	69,348	69,283	98.9%	98.8%
QLD	48,822	48,819	99.0%	99.0%
SA	26,976	26,947	98.4%	98.3%
WA	23,800	23,797	99.1%	99.1%
TAS	7,615	7,615	99.3%	99.3%
NT	878	878	100.0%	100.0%
ACT	3,031	3,031	100.0%	100.0%
Total	259,142	259,024	99.0%	99.0%

Source: My Aged Care Portal vaccination progress

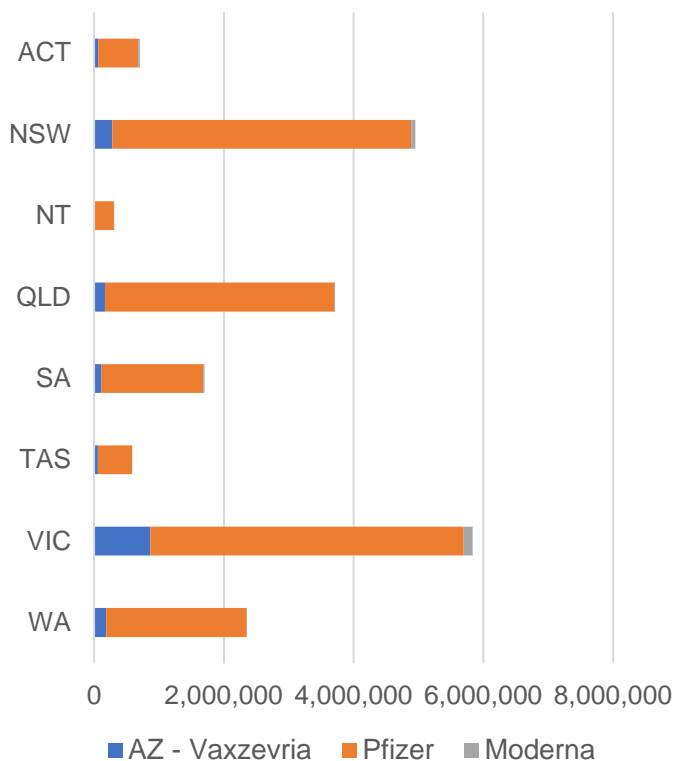
*Status updates are provided by facilities at least once per week. Reporting is updated Monday to Friday to encompass different facility updates being made on different days.

Data is sourced directly from Aged Care Service Providers and is not drawn or closely aligned with data from AIR due to inconsistencies and potential lags in uploading of records.

Data as at:
28 Feb 2022

Jurisdiction administered

Total vaccine doses administered in State and Territory clinics as at 28 February



20,140,635 total vaccine doses administered
in State and Territory clinics as at 28 February
+ **19,257** recorded in the last 24 hours
+ **159,426** recorded in the last 7 days

NSW
4,951,603
(+2,327 daily increase)

VIC
5,836,359
(+4,851 daily increase)

QLD
3,708,497
(+1,119 daily increase)

WA
2,350,479
(+5,494 daily increase)

TAS
583,974
(+416 daily increase)

SA
1,701,391
(+2,031 daily increase)

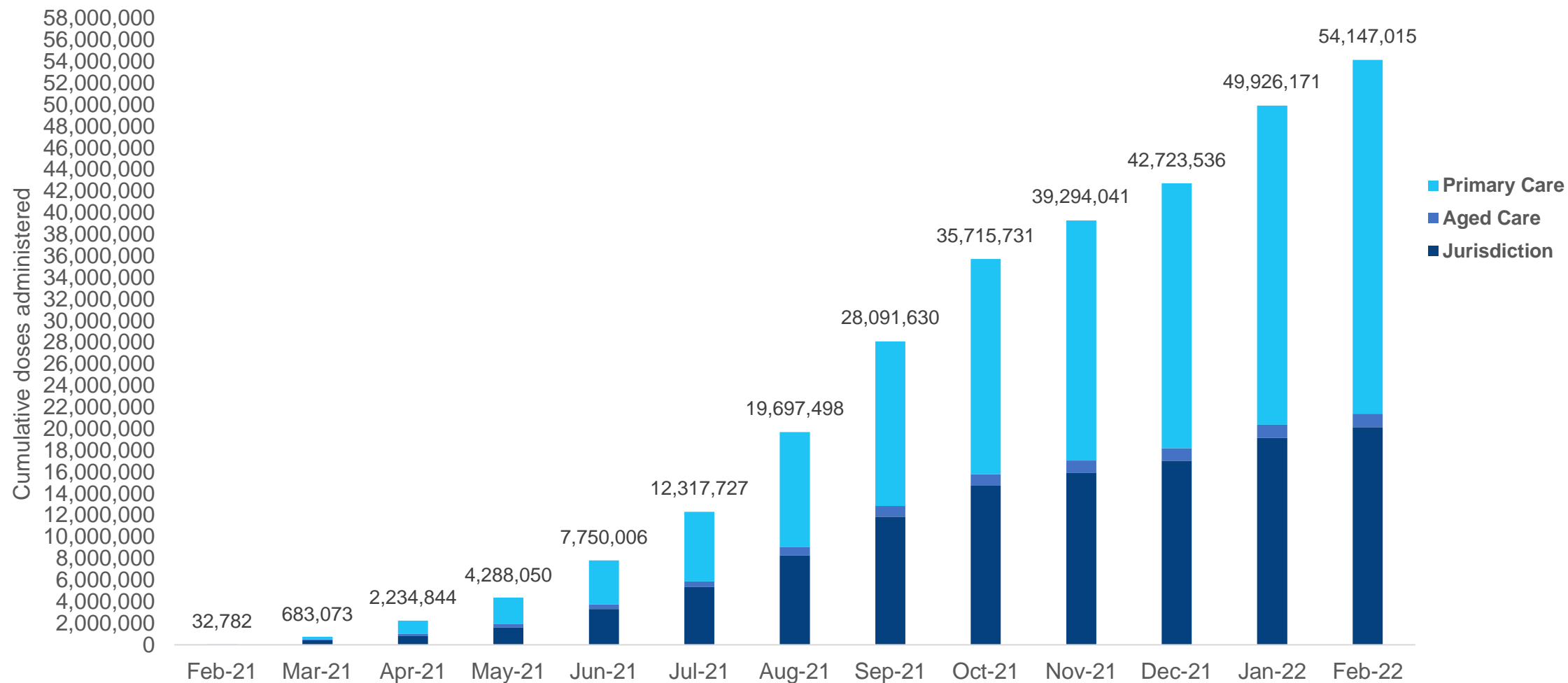
ACT
701,962
(+2,400 daily increase)

NT
306,370
(+619 daily increase)

*Sourced from the Australian Immunisation Register. Numbers are calculated as difference in daily cumulative reported numbers to allow for historical corrections.

Cumulative doses administered by channel

Data as at:
28 Feb 2022



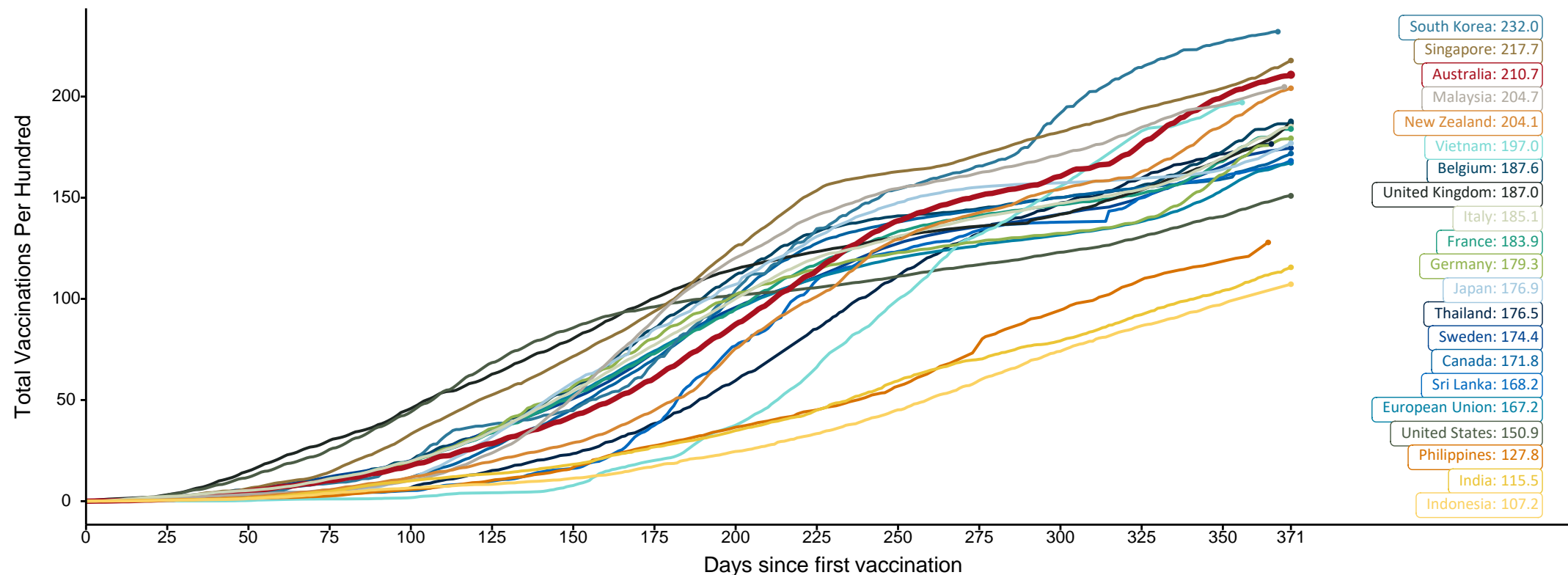
Source: Australian Immunisation Register

Doses at equivalent stages of rollout (Day 371)

Data as at:
28 Feb 2022

The x-axis is truncated at the length of Australia's vaccination program. Countries with intermittent reporting have had their doses per 100 imputed to Australia's current stage of rollout. Israel excluded as it is beyond scale of the graph

Cumulative doses administered (28 Feb): **54,147,015**



Note: From 11 January 2022, data for Australia includes all doses administered to people 5 and over. Prior to 11 January, data was for 12 and over.

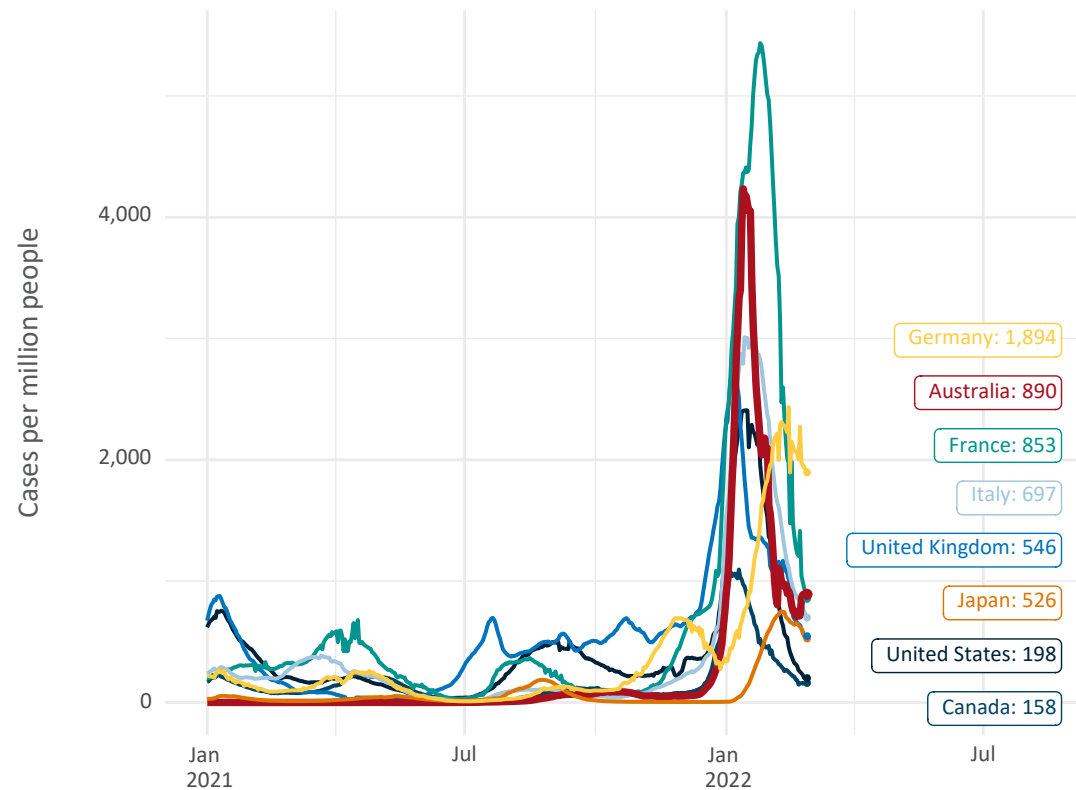
Source: Department of Health (Australia), Our World in Data (international)

Latest data: 28 February

Data as at:
28 Feb 2022

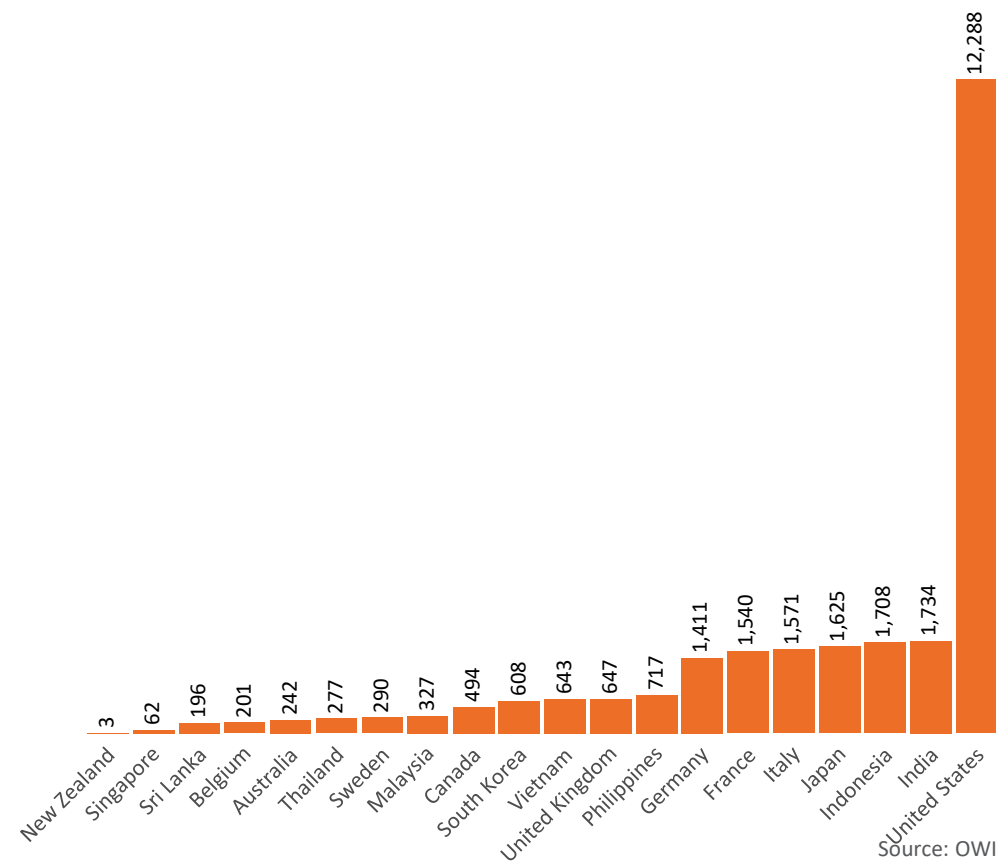
International data – COVID-19

New daily cases per million in 2021, Australia and G7 countries
Smoothed - 7 day average



Source: OWID
Data downloaded: 01 Mar 2022 07:56
Latest data: 27 Feb 2022

COVID-19 deaths in past 7 days - Australia and select countries



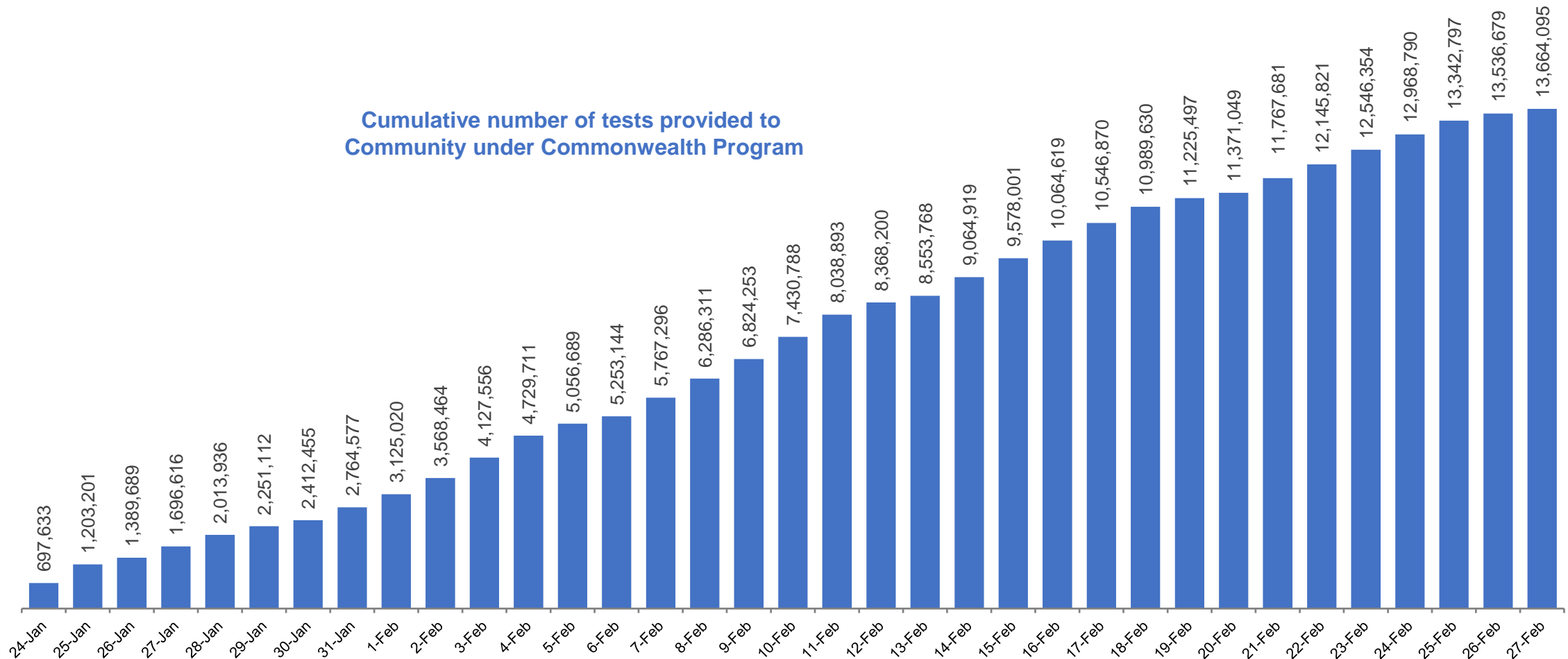
Source: OWID
Data downloaded: 01 Mar 2022 07:56
Latest data: 27 Feb 2022

Concessional rapid antigen test program

5,539 pharmacies have delivered over **13.6 million rapid antigen tests** to over **2.9m eligible concession card holders** under the Government's concessional rapid antigen test program.

**Data as at
27 Feb 2022**

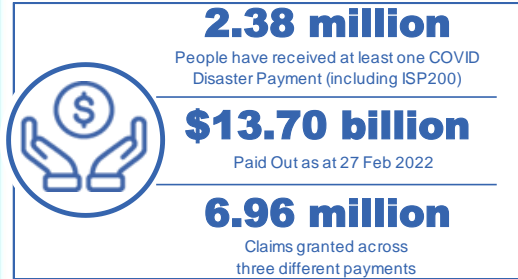
Cumulative number of tests provided to
Community under Commonwealth Program



Pandemic Response Payments

Australia's COVID-19
Vaccine Roadmap

Data as at midnight: 27 Feb 2022
Updated weekly



COVID Disaster Payment:	5.89 million claims received - 2.19 million individuals paid a total of \$12.59 billion.
\$200 Income Support Payment:	353,000 claims received - 183,000 individuals paid a total of \$268.9 million.
Pandemic Leave Disaster Payment:	1,163,000 claims received - 752,000 individuals paid a total of \$837.1 million.



**THREE
PAYMENTS
AVAILABLE**

COVID Disaster Payment

assisting during a lockdown event in a Commonwealth hotspot.

Income Support Payment \$200

for income support recipients who lost at least 8 hours of work.

Pandemic Leave Disaster Payment

for those who have to self-isolate, quarantine or care.

For more information visit:
servicesaustralia.gov.au

COVID-19 DISASTER PAYMENTS

Northern Territory

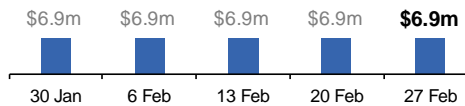
Lockdown (#3) from 16 Nov to 22 Nov
Claiming period ended 27 Dec

7,500 people have received at least one COVID Disaster Payment.

\$6.9m paid out as at 27 Feb 2022.

\$0 paid in initial payments in the week ending 27 Feb 2022.

Cumulative payments made by Territory since activation on 25 Aug 2021.



Victoria

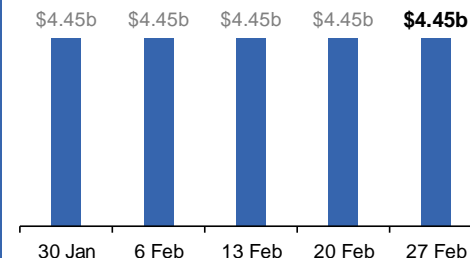
Lockdown (#6) from 6 Aug to 28 Oct
Claiming period ended 9 Dec

745,000 people have received at least one COVID Disaster Payment.

\$4.45b paid out as at 27 Feb 2022.

\$0 paid in initial and reoccurring payments in the week ending 27 Feb 2022.

Cumulative payments made by State since activation on 8 Jun 2021.



New South Wales

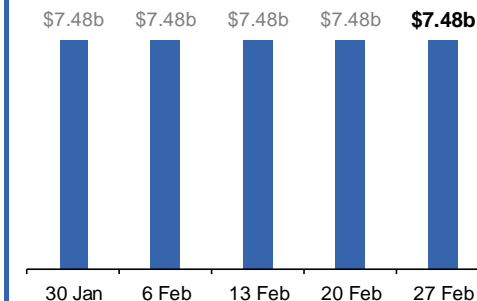
Lockdown from 24 Jun to 10 Oct
Claiming period ended 27 Nov

1.08m people have received at least one COVID Disaster Payment.

\$7.48b paid out as at 27 Feb 2022.

\$0 paid in initial and reoccurring payments in the week ending 27 Feb 2022.

Cumulative payments made by State since activation on 1 Jul 2021.



Australian Capital Territory

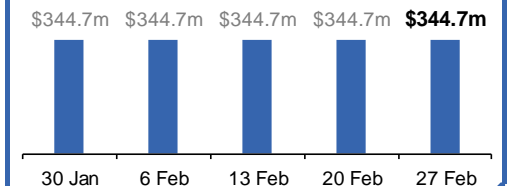
Lockdown from 12 Aug to 14 Oct
Claiming period ended 25 Nov

65,000 people have received at least one COVID Disaster Payment.

\$344.7m paid out as at 27 Feb 2022.

\$0 paid in initial and reoccurring payments in the week ending 27 Feb 2022.

Cumulative payments made by Territory since activation on 20 Aug 2021.



Pandemic Response Payments (continued)

Data as at midnight: 27 Feb 2022
Updated weekly

COVID-19 DISASTER PAYMENTS

Tasmania

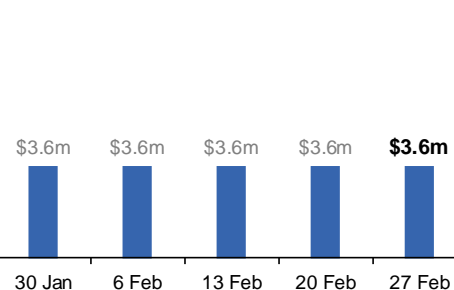
Lockdown from 15 Oct to 18 Oct
Claiming period ended 12 Nov

6,900 people have received at least one COVID Disaster Payment.

\$3.6m paid out as at 27 Feb 2022.

\$0 paid in initial and reoccurring payments in the week ending 27 Feb 2022.

Cumulative payments made by State since activation on 22 Oct 2021.



Queensland

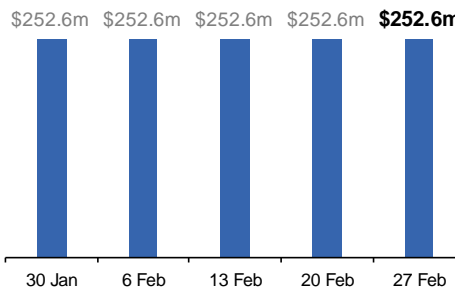
Lockdown from 31 Jul to 11 Aug
Claiming period ended 28 Aug

196,000 people have received at least one COVID Disaster Payment.

\$252.6m paid out as at 27 Feb 2022.

\$0 paid in initial and reoccurring payments in the week ending 27 Feb 2022.

Cumulative payments made by State since activation on 7 Aug 2021.



South Australia

Lockdown from 21 to 27 Jul
Claiming period ended 17 Aug

86,000 people have received at least one COVID Disaster Payment.

\$48.2m paid out as at 27 Feb 2022.

\$0 paid in initial and reoccurring payments in the week ending 27 Feb 2022.

Cumulative payments made by State since activation on 28 Jul 2021.

