



CURRENT STATUS OF CONFIRMED CASES



112



ACT	NSW	NT	QLD	SA	TAS	VIC	WA
2	43	1	20	13	4	29	0

1,788



ACT	NSW	NT	QLD	SA	TAS	VIC	WA
43	1,070	45	268	97	14	203	48

64,155,125

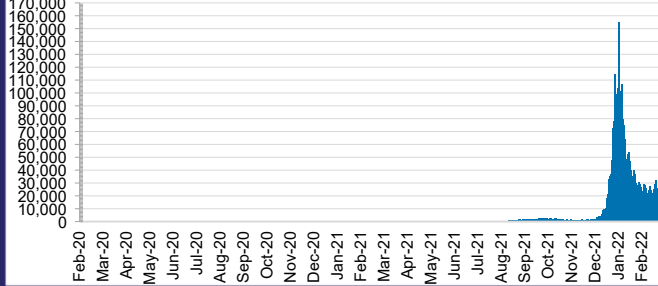


**TOTAL TESTS
REPORTED**

ACT	NSW	NT	QLD
920,303	28,885,562	720,602	6,882,484

SA	TAS	VIC	WA
3,925,159	569,147	19,613,443	2,638,425

DAILY NUMBER OF REPORTED CASES

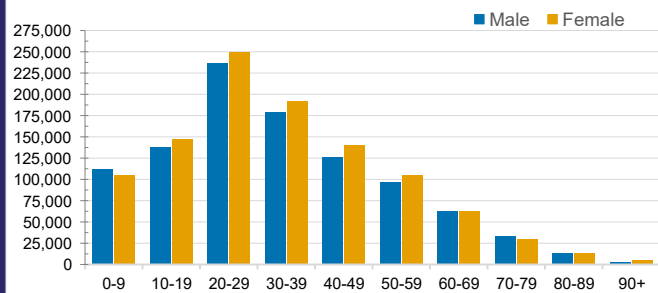


CASES IN AGED CARE SERVICES

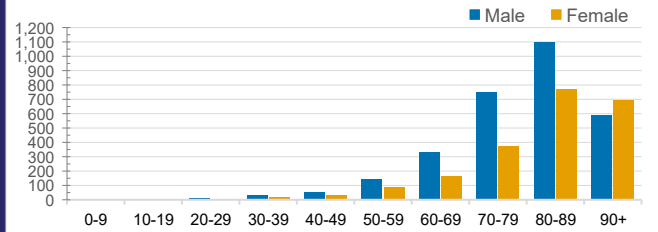
Confirmed Cases	Australia	ACT	NSW	NT	QLD	SA	TAS	VIC	WA
Residential Care Recipients	20384 (1833)	202 (16)	7820 (558)	127 (4)	4014 (207)	1466 (108)	196 (9)	6462 (931)	97
In Home Care Recipients	205 (13)	0	45 (3)	0	15	1	5 (2)	138 (7)	1 (1)

Cases in care recipients (deaths)

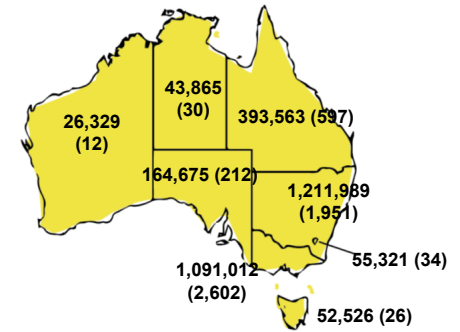
CASES BY AGE GROUP AND SEX



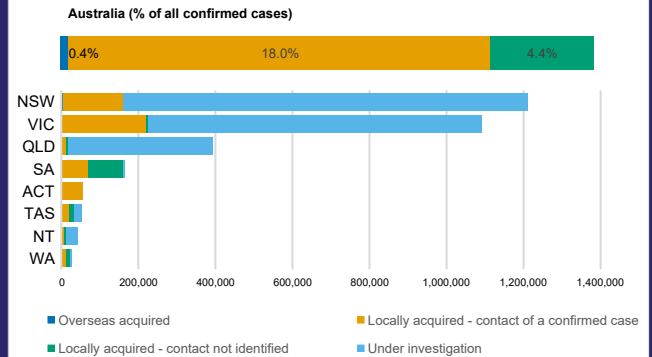
DEATHS BY AGE GROUP AND SEX



CASES (DEATHS) BY STATE AND TERRITORIES



CASES BY SOURCE OF INFECTION



PUBLIC HEALTH RESPONSE MEASURE

