



CURRENT STATUS OF CONFIRMED CASES



117



ACT	NSW	NT	QLD	SA	TAS	VIC	WA
2	43	3	20	15	5	29	0

1,809



ACT	NSW	NT	QLD	SA	TAS	VIC	WA
39	1,066	47	267	106	21	227	36

64,063,883

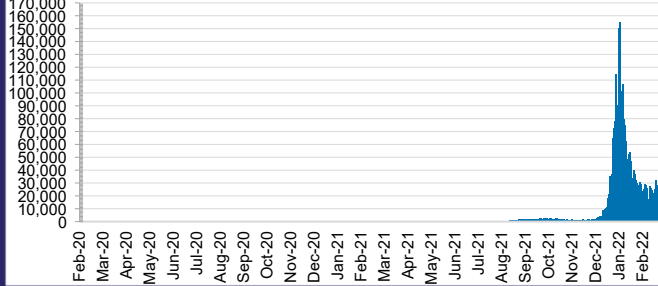


**TOTAL TESTS
REPORTED**

ACT	NSW	NT	QLD
918,568	28,864,144	719,479	6,878,049

SA	TAS	VIC	WA
3,925,159	567,956	19,598,972	2,591,556

DAILY NUMBER OF REPORTED CASES

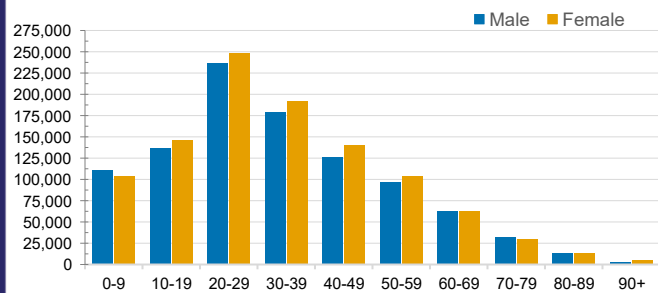


CASES IN AGED CARE SERVICES

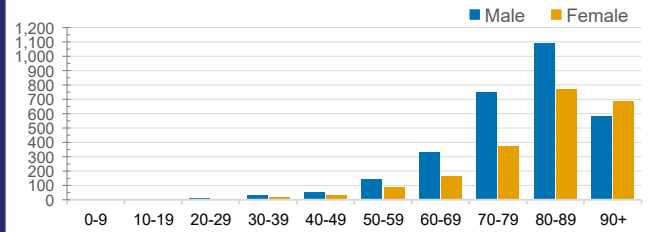
Confirmed Cases	Australia	ACT	NSW	NT	QLD	SA	TAS	VIC	WA
Residential Care Recipients	20274 (1826)	201 (15)	7789 (558)	124 (4)	4000 (204)	1466 (108)	196 (8)	6424 (929)	74
In Home Care Recipients	205 (13)	0	45 (3)	0	15	1	5 (2)	138 (7)	1 (1)

Cases in care recipients (deaths)

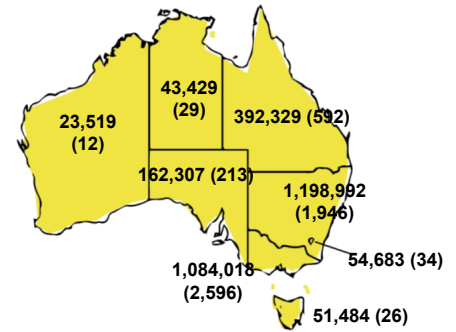
CASES BY AGE GROUP AND SEX



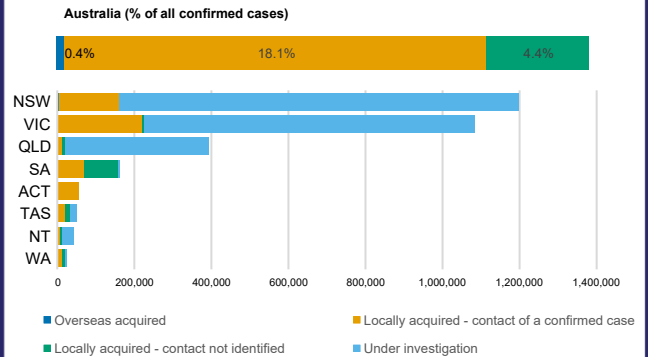
DEATHS BY AGE GROUP AND SEX



CASES (DEATHS) BY STATE AND TERRITORIES



CASES BY SOURCE OF INFECTION



PUBLIC HEALTH RESPONSE MEASURE

