



**CURRENT STATUS OF CONFIRMED CASES**



**112**



ACT	NSW	NT	QLD	SA	TAS	VIC	WA
2	45	2	21	10	4	28	0

**1,752**



ACT	NSW	NT	QLD	SA	TAS	VIC	WA
39	995	48	276	100	16	250	28

**63,945,602**

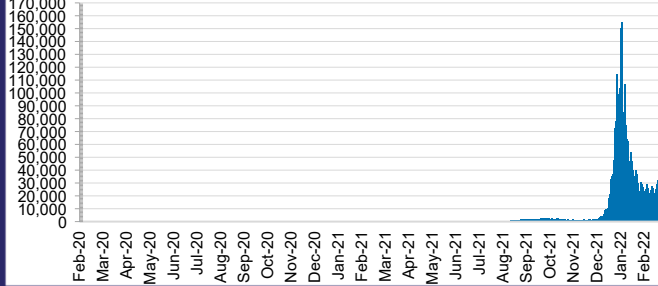


**TOTAL TESTS  
REPORTED**

ACT	NSW	NT	QLD
914,674	28,808,745	717,745	6,868,714

SA	TAS	VIC	WA
3,907,123	566,177	19,570,868	2,591,556

**DAILY NUMBER OF REPORTED CASES**

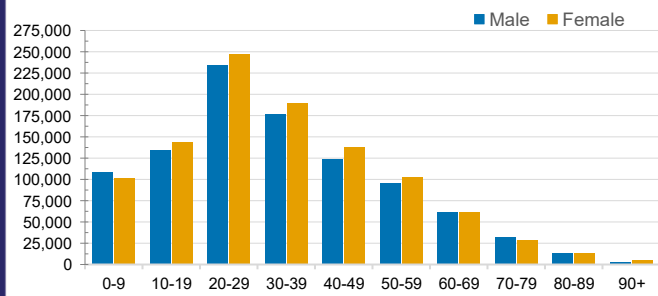


**CASES IN AGED CARE SERVICES**

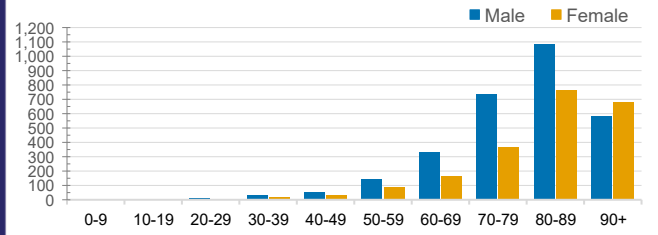
Confirmed Cases	Australia	ACT	NSW	NT	QLD	SA	TAS	VIC	WA
Residential Care Recipients	20104 (1821)	201 (15)	7735 (556)	113 (4)	3952 (202)	1459 (108)	196 (8)	6386 (928)	62
In Home Care Recipients	205 (13)	0	45 (3)	0	15	1	5 (2)	138 (7)	1 (1)

Cases in care recipients (deaths)

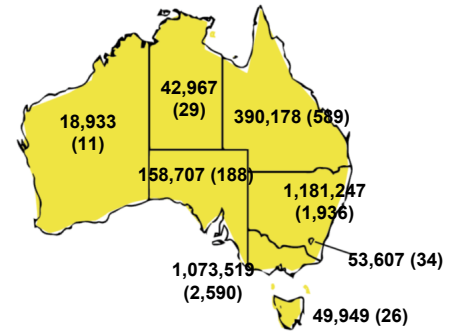
**CASES BY AGE GROUP AND SEX**



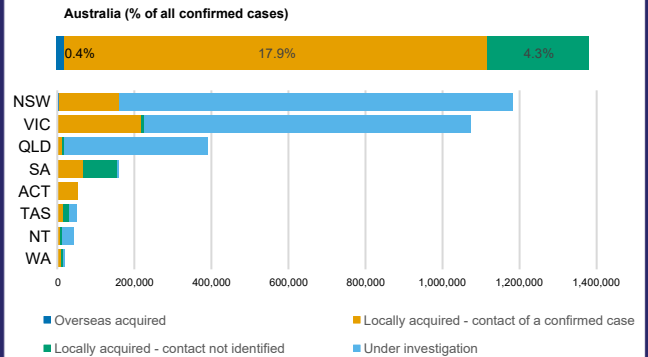
**DEATHS BY AGE GROUP AND SEX**



**CASES (DEATHS) BY STATE AND TERRITORIES**



**CASES BY SOURCE OF INFECTION**



**PUBLIC HEALTH RESPONSE MEASURE**

