



CURRENT STATUS OF CONFIRMED CASES



105



ACT	NSW	NT	QLD	SA	TAS	VIC	WA
2	42	2	18	9	4	28	0

1,753



ACT	NSW	NT	QLD	SA	TAS	VIC	WA
35	1,000	48	284	106	14	245	21

63,878,542

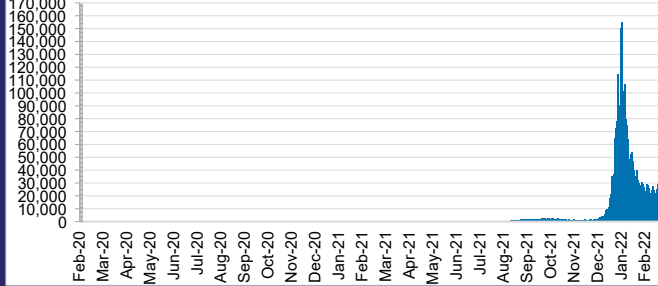


**TOTAL TESTS
REPORTED**

ACT	NSW	NT	QLD
912,180	28,778,326	716,327	6,861,490

SA	TAS	VIC	WA
3,896,083	565,004	19,557,576	2,591,556

DAILY NUMBER OF REPORTED CASES

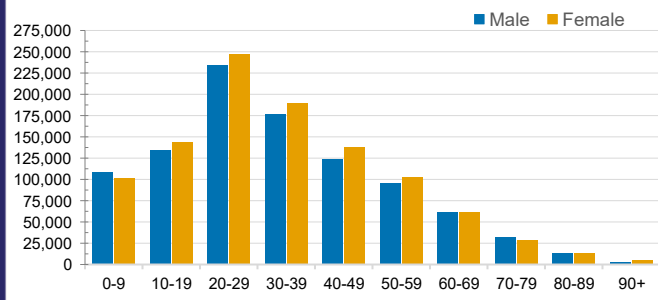


CASES IN AGED CARE SERVICES

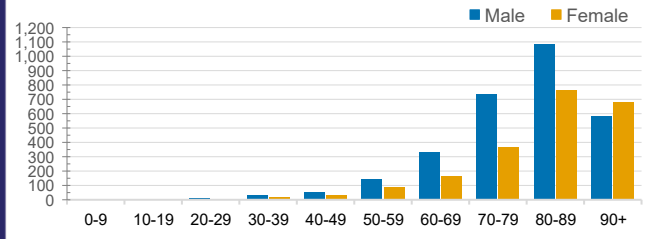
Confirmed Cases	Australia	ACT	NSW	NT	QLD	SA	TAS	VIC	WA
Residential Care Recipients	20104 (1821)	201 (15)	7735 (556)	113 (4)	3952 (202)	1459 (108)	196 (8)	6386 (928)	62
In Home Care Recipients	205 (13)	0	45 (3)	0	15	1	5 (2)	138 (7)	1 (1)

Cases in care recipients (deaths)

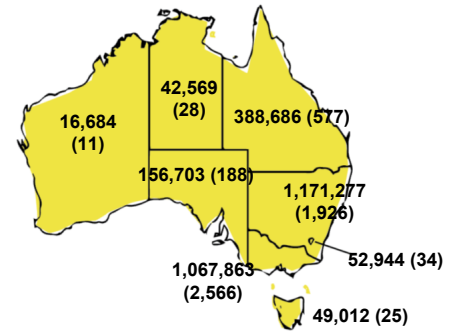
CASES BY AGE GROUP AND SEX



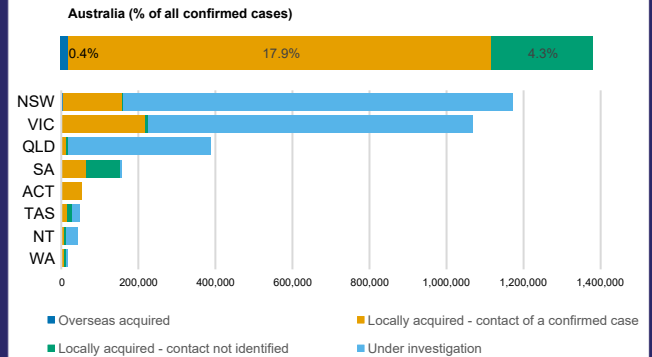
DEATHS BY AGE GROUP AND SEX



CASES (DEATHS) BY STATE AND TERRITORIES



CASES BY SOURCE OF INFECTION



PUBLIC HEALTH RESPONSE MEASURE

