



**CURRENT STATUS OF CONFIRMED CASES**



**102**



ACT	NSW	NT	QLD	SA	TAS	VIC	WA
5	46	2	15	8	2	18	6

**2,446**



ACT	NSW	NT	QLD	SA	TAS	VIC	WA
48	1,301	14	393	180	22	280	208

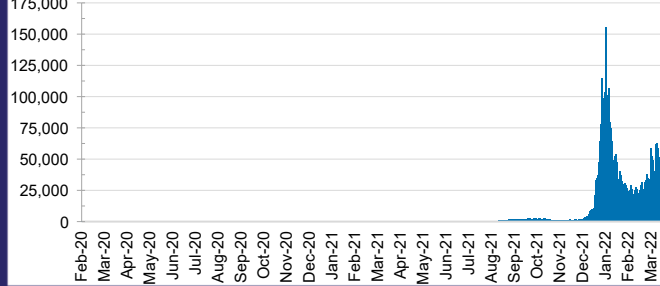
**66,416,441**



ACT	NSW	NT	QLD
981,468	29,846,083	741,734	7,073,517

SA	TAS	VIC	WA
4,214,850	599,166	19,958,896	3,000,727

**DAILY NUMBER OF REPORTED CASES**

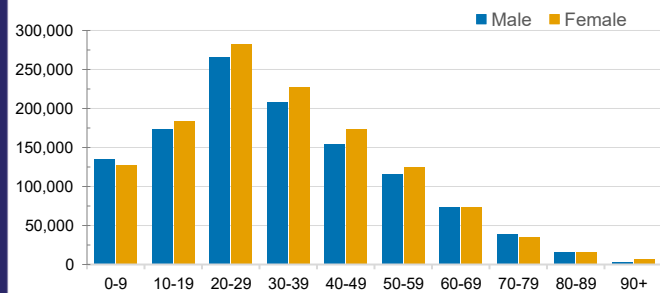


**CASES IN AGED CARE SERVICES**

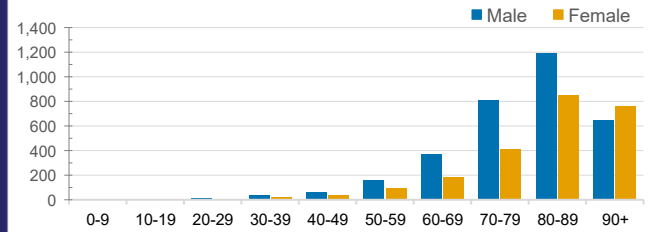
Confirmed Cases	Australia	ACT	NSW	NT	QLD	SA	TAS	VIC	WA
Residential Care Recipients	23261 (1849)	217 (15)	8853 (546)	96 (4)	4254 (237)	1485 (88)	224 (8)	7428 (933)	704 (18)
In Home Care Recipients	205 (13)	0	45 (3)	0	15	1	5 (2)	138 (7)	1 (1)

Cases in care recipients (deaths)

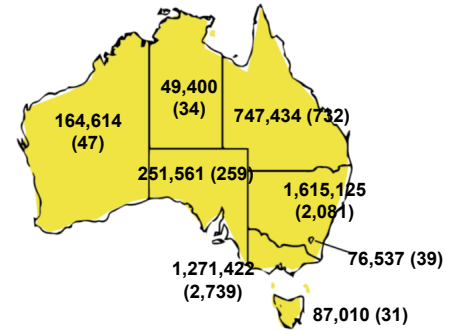
**CASES BY AGE GROUP AND SEX**



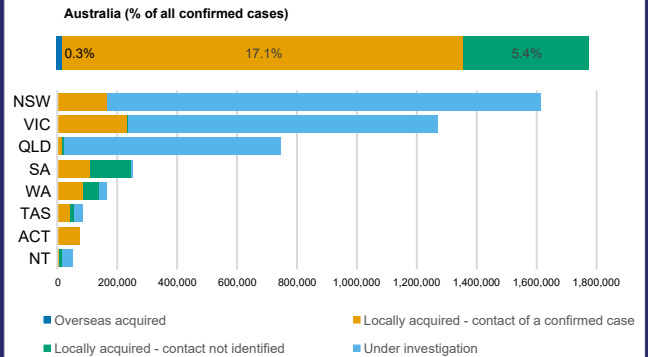
**DEATHS BY AGE GROUP AND SEX**



**CASES (DEATHS) BY STATE AND TERRITORIES**



**CASES BY SOURCE OF INFECTION**



**PUBLIC HEALTH RESPONSE MEASURE**

