



**CURRENT STATUS OF CONFIRMED CASES**



**118**



ACT	NSW	NT	QLD	SA	TAS	VIC	WA
2	43	2	26	9	3	33	0

**1,837**



ACT	NSW	NT	QLD	SA	TAS	VIC	WA
39	1,035	48	315	104	12	262	22

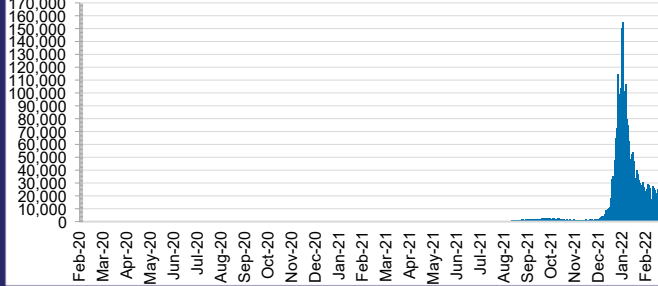
**63,786,457**



ACT	NSW	NT	QLD
908,915	28,747,133	714,749	6,853,231

SA	TAS	VIC	WA
3,885,185	563,672	19,538,190	2,575,382

**DAILY NUMBER OF REPORTED CASES**

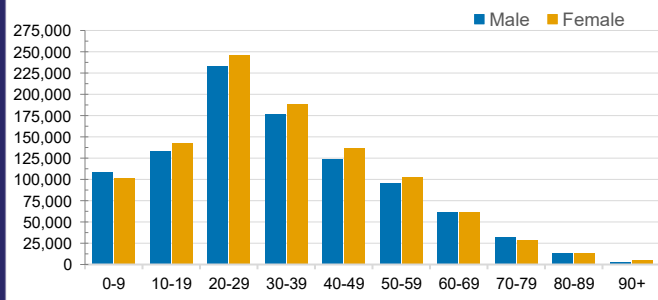


**CASES IN AGED CARE SERVICES**

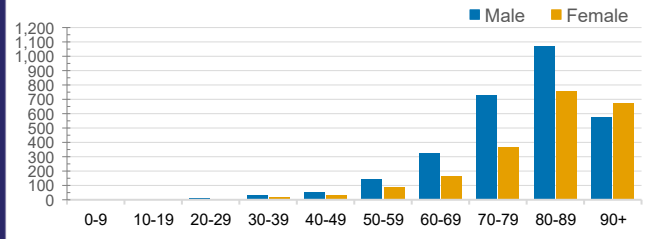
Confirmed Cases	Australia	ACT	NSW	NT	QLD	SA	TAS	VIC	WA
Residential Care Recipients	19813 (1808)	201 (15)	7489 (544)	107 (4)	3929 (201)	1458 (108)	198 (8)	6376 (928)	55
In Home Care Recipients	205 (13)	0	45 (3)	0	15	1	5 (2)	138 (7)	1 (1)

Cases in care recipients (deaths)

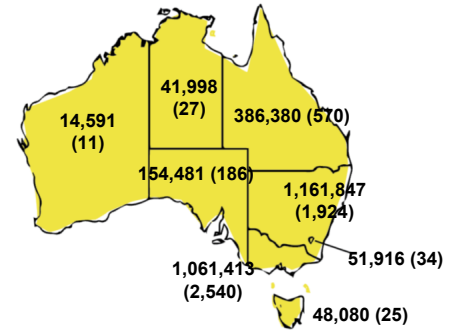
**CASES BY AGE GROUP AND SEX**



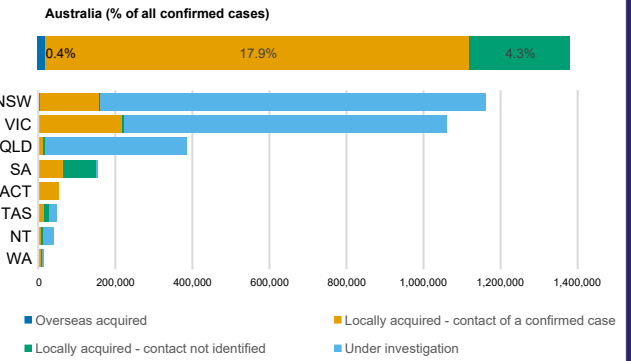
**DEATHS BY AGE GROUP AND SEX**



**CASES (DEATHS) BY STATE AND TERRITORIES**



**CASES BY SOURCE OF INFECTION**



**PUBLIC HEALTH RESPONSE MEASURE**

