



CURRENT STATUS OF CONFIRMED CASES



113



ACT	NSW	NT	QLD	SA	TAS	VIC	WA
4	55	3	14	7	0	21	9

2,301



ACT	NSW	NT	QLD	SA	TAS	VIC	WA
46	1,270	16	299	181	27	252	210

66,168,140

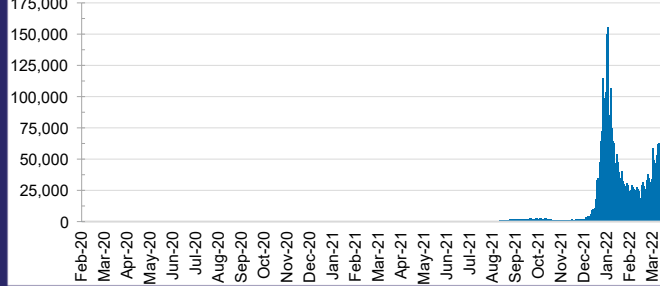


**TOTAL TESTS
REPORTED**

ACT	NSW	NT	QLD
974,628	29,750,882	739,827	7,052,795

SA	TAS	VIC	WA
4,186,303	595,728	19,909,041	2,958,936

DAILY NUMBER OF REPORTED CASES

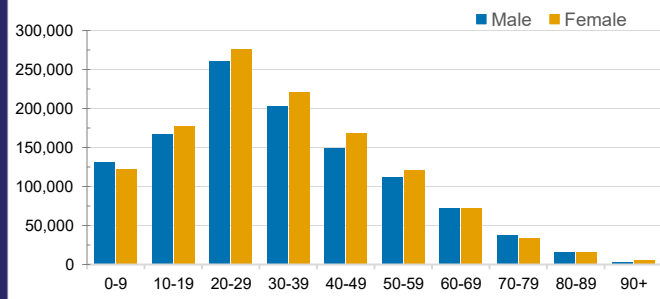


CASES IN AGED CARE SERVICES

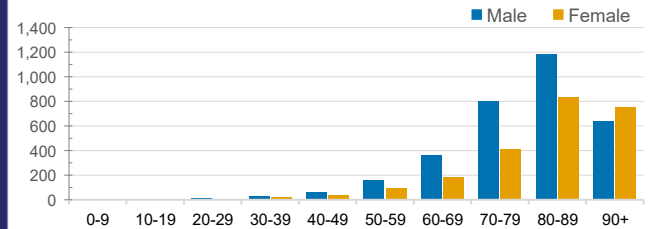
Confirmed Cases	Australia	ACT	NSW	NT	QLD	SA	TAS	VIC	WA
Residential Care Recipients	22949 (1845)	215 (15)	8797 (547)	99 (5)	4179 (238)	1446 (87)	221 (6)	7347 (934)	646 (13)
In Home Care Recipients	205 (13)	0	45 (3)	0	15	1	5 (2)	138 (7)	1 (1)

Cases in care recipients (deaths)

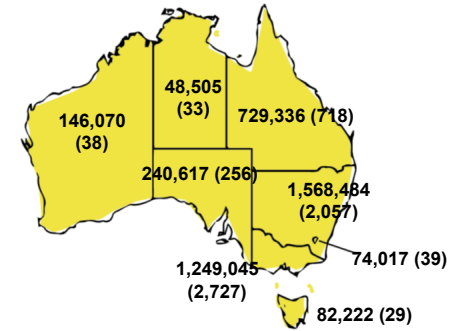
CASES BY AGE GROUP AND SEX



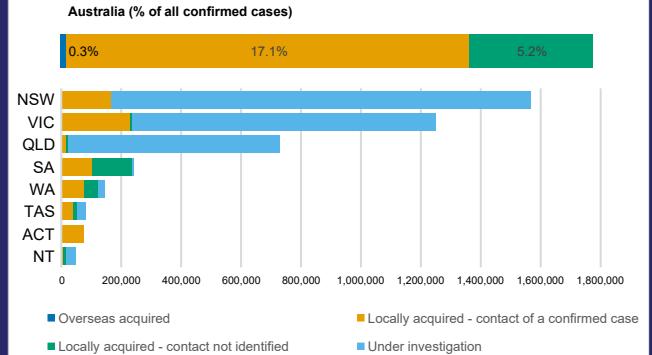
DEATHS BY AGE GROUP AND SEX



CASES (DEATHS) BY STATE AND TERRITORIES



CASES BY SOURCE OF INFECTION



PUBLIC HEALTH MEASURE

