



CURRENT STATUS OF CONFIRMED CASES



100



ACT	NSW	NT	QLD	SA	TAS	VIC	WA
3	44	2	19	5	1	18	8

2,159



ACT	NSW	NT	QLD	SA	TAS	VIC	WA
42	1,177	22	295	151	28	250	194

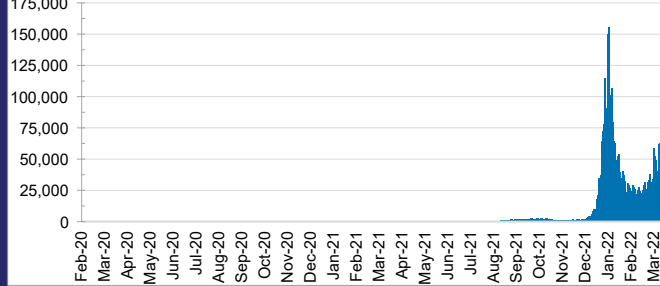
65,937,800



ACT	NSW	NT	QLD
970,109	29,649,365	738,880	7,031,844

SA	TAS	VIC	WA
4,160,608	593,473	19,877,518	2,916,003

DAILY NUMBER OF REPORTED CASES

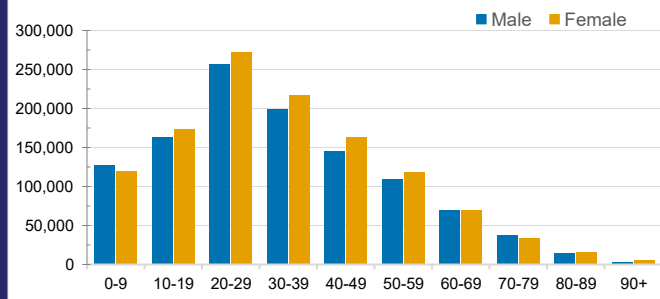


CASES IN AGED CARE SERVICES

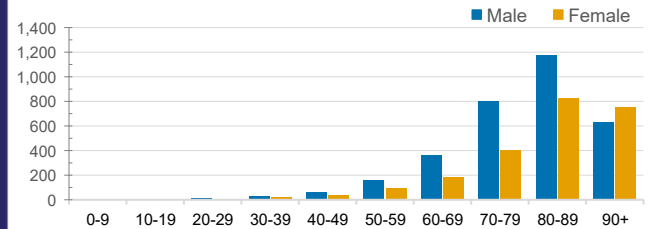
Confirmed Cases	Australia	ACT	NSW	NT	QLD	SA	TAS	VIC	WA
Residential Care Recipients	22539 (1831)	209 (15)	8593 (545)	100 (5)	4176 (238)	1414 (83)	201 (6)	7285 (930)	561 (9)
In Home Care Recipients	205 (13)	0	45 (3)	0	15	1	5 (2)	138 (7)	1 (1)

Cases in care recipients (deaths)

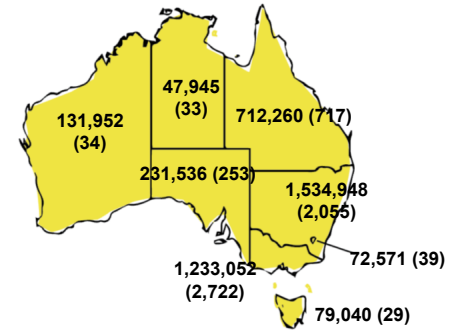
CASES BY AGE GROUP AND SEX



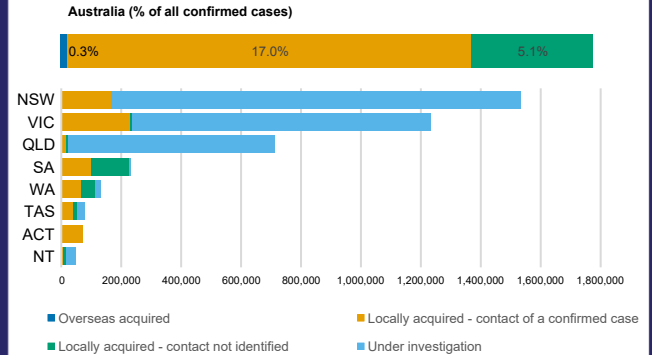
DEATHS BY AGE GROUP AND SEX



CASES (DEATHS) BY STATE AND TERRITORIES



CASES BY SOURCE OF INFECTION



PUBLIC HEALTH RESPONSE MEASURE

