



CURRENT STATUS OF CONFIRMED CASES



102



ACT	NSW	NT	QLD	SA	TAS	VIC	WA
3	43	1	11	10	0	25	9

2,149



ACT	NSW	NT	QLD	SA	TAS	VIC	WA
42	1,180	18	271	157	28	244	209

65,706,632

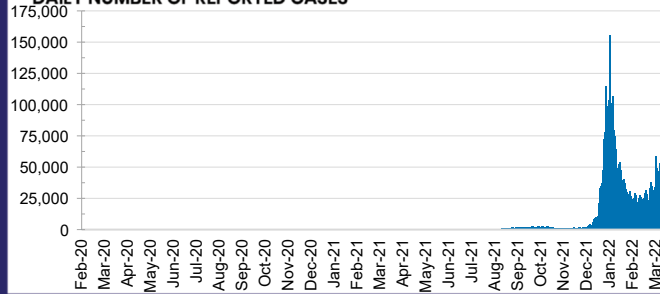


**TOTAL TESTS
REPORTED**

ACT	NSW	NT	QLD
963,829	29,541,462	737,037	7,005,025

SA	TAS	VIC	WA
4,129,610	590,037	19,842,436	2,897,196

DAILY NUMBER OF REPORTED CASES

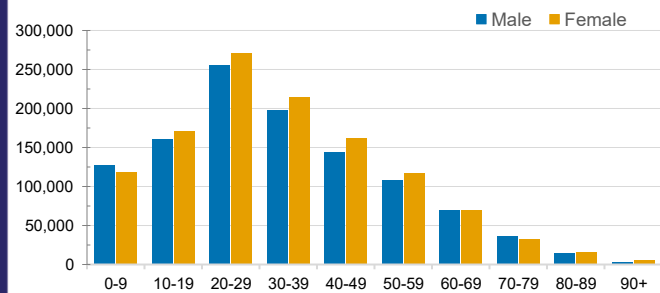


CASES IN AGED CARE SERVICES

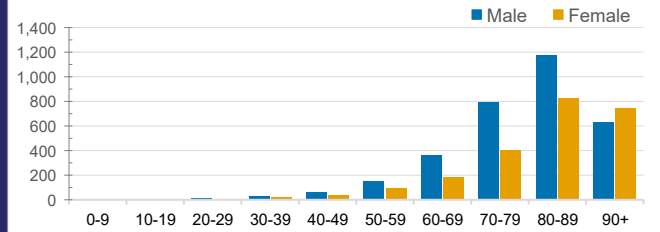
Confirmed Cases	Australia	ACT	NSW	NT	QLD	SA	TAS	VIC	WA
Residential Care Recipients	22723 (1900)	208 (16)	8669 (587)	130 (6)	4352 (222)	1611 (112)	225 (10)	6928 (937)	600 (10)
In Home Care Recipients	205 (13)	0	45 (3)	0	15	1	5 (2)	138 (7)	1 (1)

Cases in care recipients (deaths)

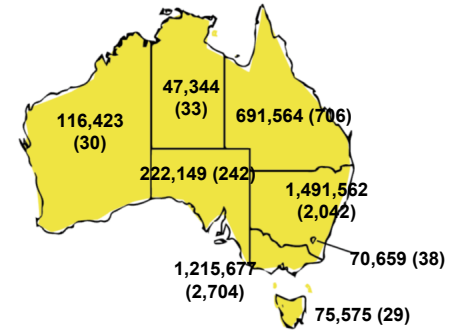
CASES BY AGE GROUP AND SEX



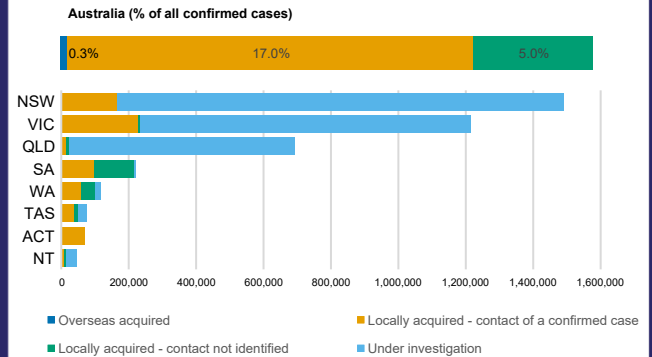
DEATHS BY AGE GROUP AND SEX



CASES (DEATHS) BY STATE AND TERRITORIES



CASES BY SOURCE OF INFECTION



PUBLIC HEALTH RESPONSE MEASURE

