



**CURRENT STATUS OF CONFIRMED CASES**



**95**



ACT	NSW	NT	QLD	SA	TAS	VIC	WA
3	44	1	7	8	0	23	9



**2,104**

ACT	NSW	NT	QLD	SA	TAS	VIC	WA
42	1,162	18	252	161	32	243	194

**65,592,780**

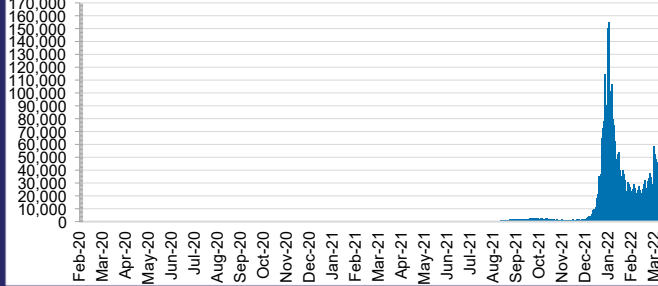


**TOTAL TESTS  
REPORTED**

ACT	NSW	NT	QLD
960,164	29,497,056	736,391	6,990,545

SA	TAS	VIC	WA
4,112,982	587,958	19,831,384	2,876,300

**DAILY NUMBER OF REPORTED CASES**

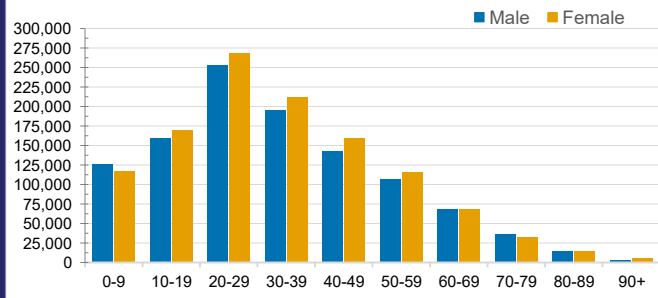


**CASES IN AGED CARE SERVICES**

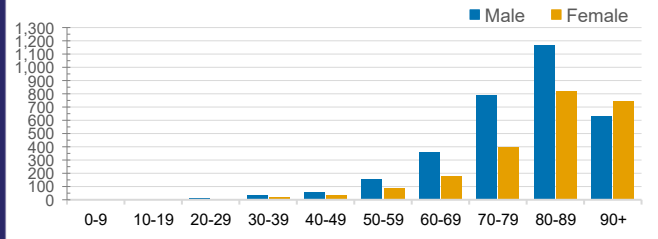
Confirmed Cases	Australia	ACT	NSW	NT	QLD	SA	TAS	VIC	WA
Residential Care Recipients	22762 (1893)	206 (16)	8577 (586)	130 (6)	4320 (221)	1604 (111)	219 (9)	6905 (936)	801 (8)
In Home Care Recipients	205 (13)	0	45 (3)	0	15	1	5 (2)	138 (7)	1 (1)

Cases in care recipients (deaths)

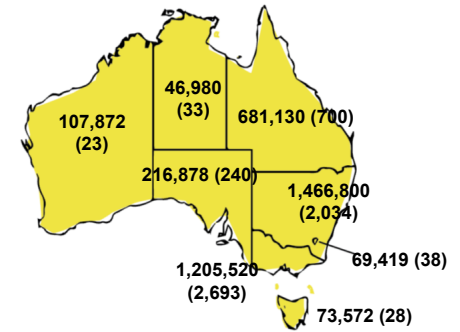
**CASES BY AGE GROUP AND SEX**



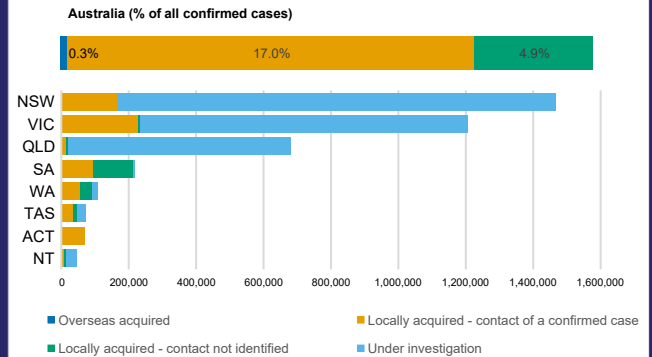
**DEATHS BY AGE GROUP AND SEX**



**CASES (DEATHS) BY STATE AND TERRITORIES**



**CASES BY SOURCE OF INFECTION**



**PUBLIC HEALTH RESPONSE MEASURE**

