



CURRENT STATUS OF CONFIRMED CASES



87



ACT	NSW	NT	QLD	SA	TAS	VIC	WA
4	34	0	14	9	2	20	4



2,046

ACT	NSW	NT	QLD	SA	TAS	VIC	WA
39	1,163	16	243	150	24	248	163

65,406,558

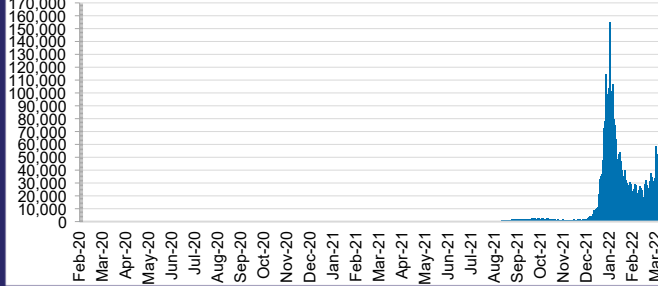


**TOTAL TESTS
REPORTED**

ACT	NSW	NT	QLD
954,441	29,408,046	734,498	6,970,877

SA	TAS	VIC	WA
4,085,713	584,769	19,831,384	2,836,830

DAILY NUMBER OF REPORTED CASES

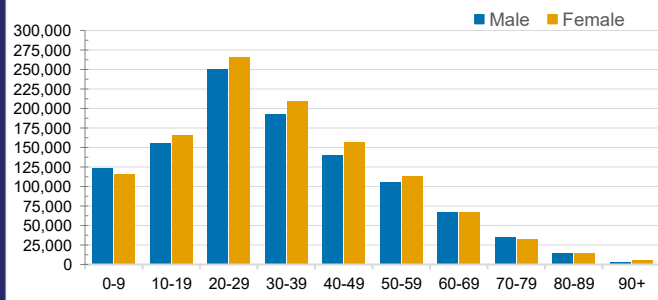


CASES IN AGED CARE SERVICES

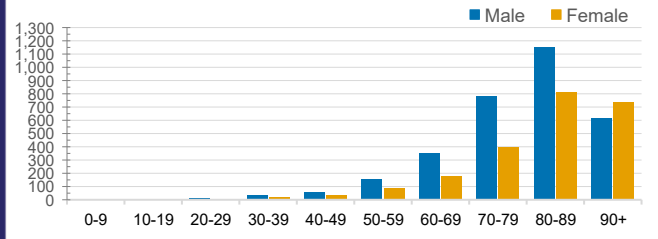
Confirmed Cases	Australia	ACT	NSW	NT	QLD	SA	TAS	VIC	WA
Residential Care Recipients	22033 (1879)	204 (16)	8419 (580)	130 (6)	4208 (217)	1579 (111)	206 (9)	6803 (935)	484 (5)
In Home Care Recipients	205 (13)	0	45 (3)	0	15	1	5 (2)	138 (7)	1 (1)

Cases in care recipients (deaths)

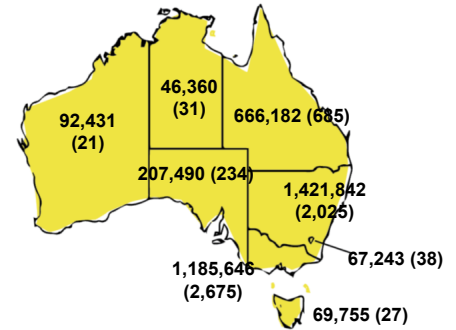
CASES BY AGE GROUP AND SEX



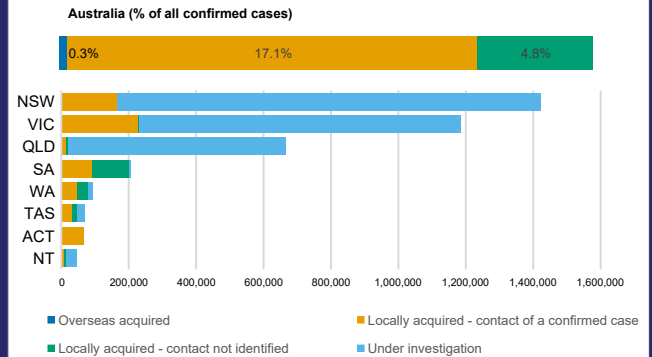
DEATHS BY AGE GROUP AND SEX



CASES (DEATHS) BY STATE AND TERRITORIES



CASES BY SOURCE OF INFECTION



PUBLIC HEALTH RESPONSE MEASURE

