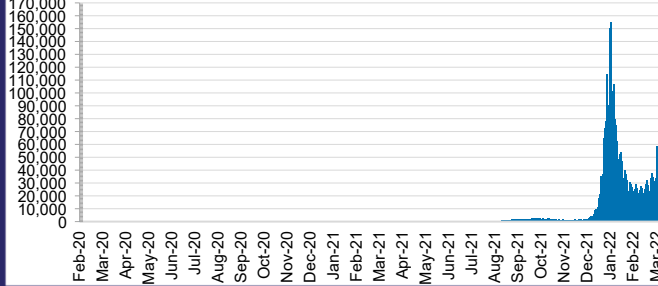




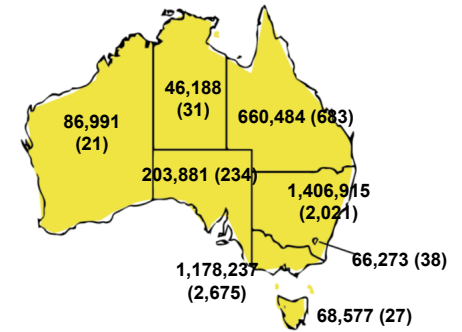
**CURRENT STATUS OF CONFIRMED CASES**



**DAILY NUMBER OF REPORTED CASES**



**CASES (DEATHS) BY STATE AND TERRITORIES**



**87**



ACT	NSW	NT	QLD	SA	TAS	VIC	WA
4	33	0	17	7	2	21	3



**1,943**

**CURRENT CASES  
ADMITTED TO HOSPITALS**

ACT	NSW	NT	QLD	SA	TAS	VIC	WA
38	1,124	15	228	148	20	215	155

**65,300,155**



**TOTAL TESTS  
REPORTED**

ACT	NSW	NT	QLD
952,194	29,374,198	734,057	6,965,217

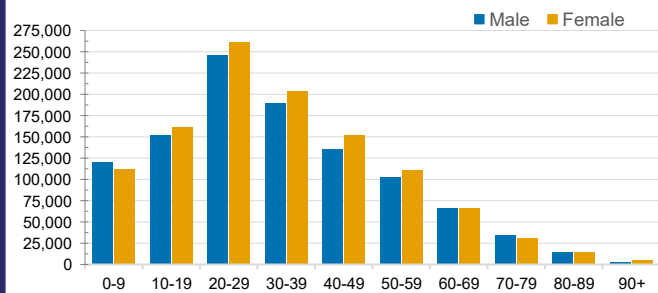
SA	TAS	VIC	WA
4,075,540	583,824	19,818,623	2,796,502

**CASES IN AGED CARE SERVICES**

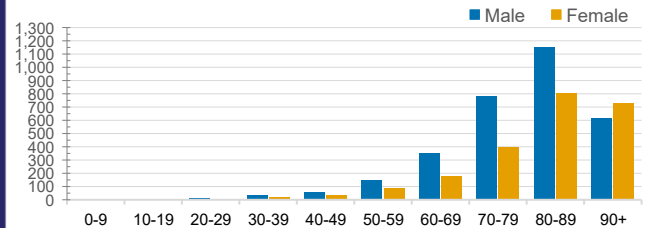
Confirmed Cases	Australia	ACT	NSW	NT	QLD	SA	TAS	VIC	WA
Residential Care Recipients	21691 (1873)	204 (16)	8308 (578)	130 (5)	4172 (217)	1564 (111)	199 (9)	6734 (934)	380 (3)
In Home Care Recipients	205 (13)	0	45 (3)	0	15	1	5 (2)	138 (7)	1 (1)

Cases in care recipients (deaths)

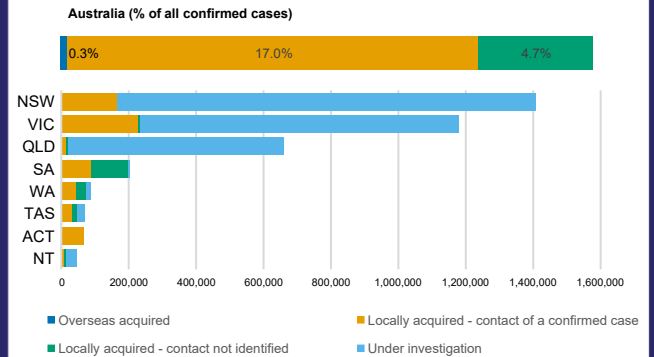
**CASES BY AGE GROUP AND SEX**



**DEATHS BY AGE GROUP AND SEX**



**CASES BY SOURCE OF INFECTION**



**PUBLIC HEALTH RESPONSE MEASURE**

