



CURRENT STATUS OF CONFIRMED CASES



121



ACT	NSW	NT	QLD	SA	TAS	VIC	WA
0	45	2	26	9	2	37	0



1,904

**CURRENT CASES
ADMITTED TO HOSPITALS**

ACT	NSW	NT	QLD	SA	TAS	VIC	WA
40	1,072	76	312	112	12	264	16

63,691,521

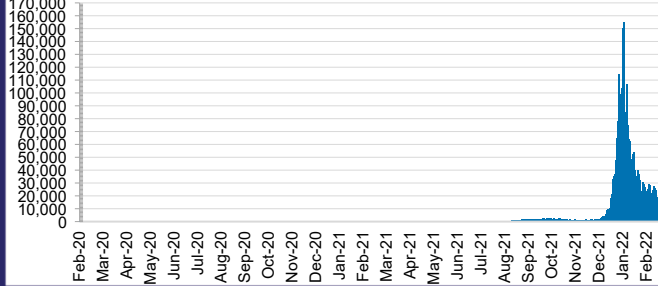


**TOTAL TESTS
REPORTED**

ACT	NSW	NT	QLD
906,541	28,716,945	713,771	6,842,695

SA	TAS	VIC	WA
3,873,259	562,494	19,518,627	2,557,189

DAILY NUMBER OF REPORTED CASES

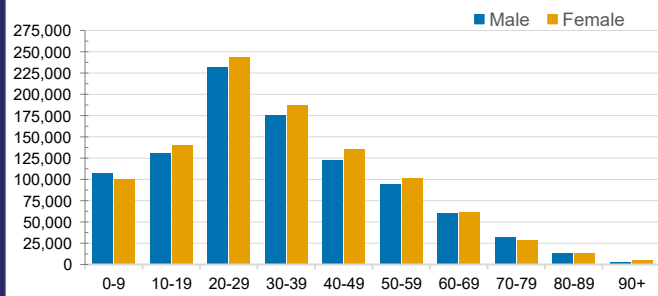


CASES IN AGED CARE SERVICES

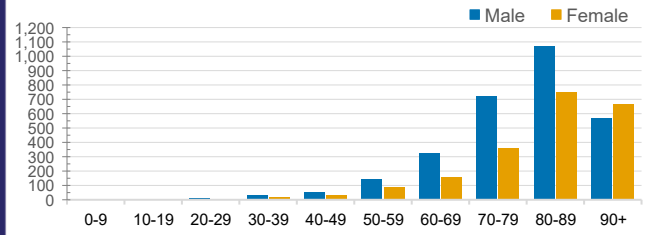
Confirmed Cases	Australia	ACT	NSW	NT	QLD	SA	TAS	VIC	WA
Residential Care Recipients	19479 (1797)	200 (15)	7416 (541)	107 (4)	3783 (201)	1365 (100)	198 (8)	6367 (928)	43
In Home Care Recipients	205 (13)	0	45 (3)	0	15	1	5 (2)	138 (7)	1 (1)

Cases in care recipients (deaths)

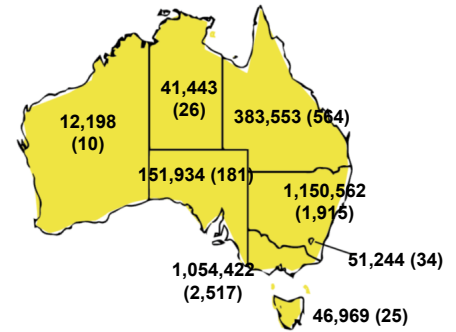
CASES BY AGE GROUP AND SEX



DEATHS BY AGE GROUP AND SEX

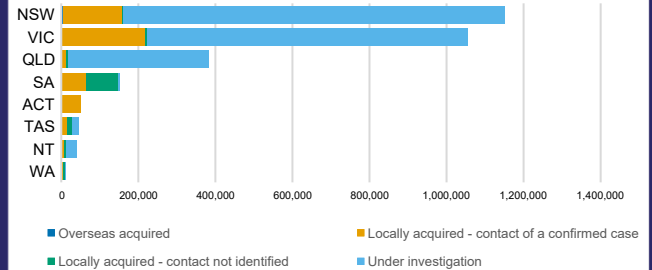


CASES (DEATHS) BY STATE AND TERRITORIES



CASES BY SOURCE OF INFECTION

Australia (% of all confirmed cases)



PUBLIC HEALTH RESPONSE MEASURE

Proportion of total cases under investigation

