



CURRENT STATUS OF CONFIRMED CASES



85



ACT	NSW	NT	QLD	SA	TAS	VIC	WA
2	29	1	18	7	2	23	3



ACT	NSW	NT	QLD	SA	TAS	VIC	WA
34	1,090	16	235	147	24	210	147

65,207,800

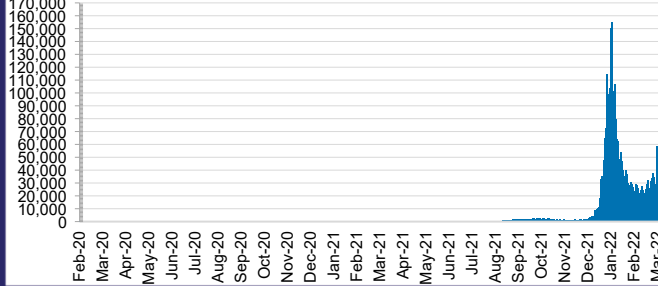


TOTAL TESTS
REPORTED

ACT	NSW	NT	QLD
949,766	29,321,601	733,655	6,958,273

SA	TAS	VIC	WA
4,063,714	582,631	19,801,658	2,796,502

DAILY NUMBER OF REPORTED CASES

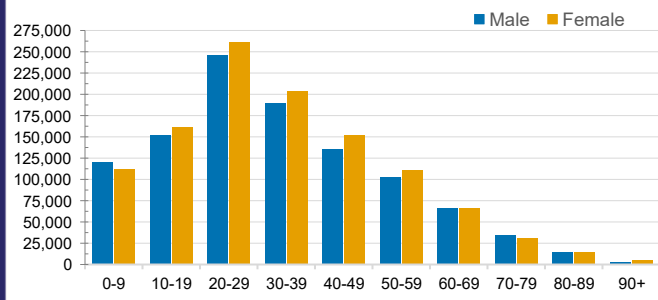


CASES IN AGED CARE SERVICES

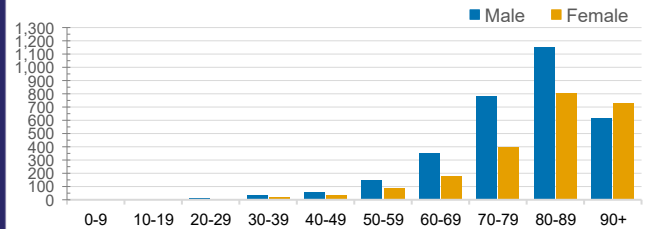
Confirmed Cases	Australia	ACT	NSW	NT	QLD	SA	TAS	VIC	WA
Residential Care Recipients	21691 (1873)	204 (16)	8308 (578)	130 (5)	4172 (217)	1564 (111)	199 (9)	6734 (934)	380 (3)
In Home Care Recipients	205 (13)	0	45 (3)	0	15	1	5 (2)	138 (7)	1 (1)

Cases in care recipients (deaths)

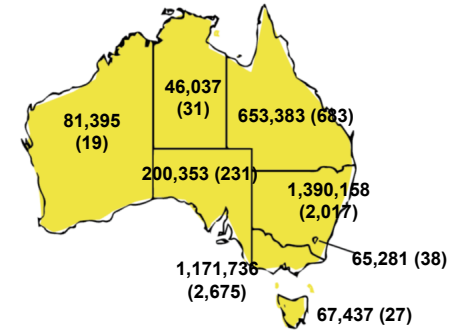
CASES BY AGE GROUP AND SEX



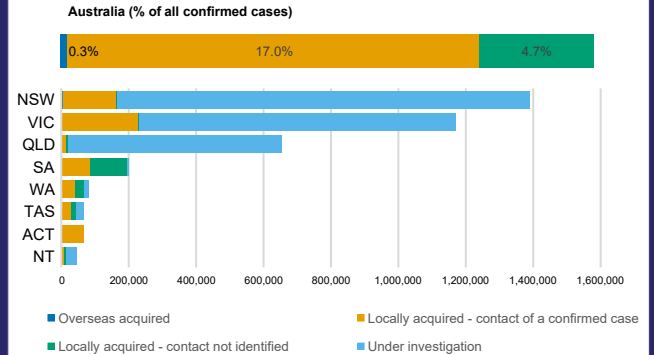
DEATHS BY AGE GROUP AND SEX



CASES (DEATHS) BY STATE AND TERRITORIES



CASES BY SOURCE OF INFECTION



PUBLIC HEALTH RESPONSE MEASURE

