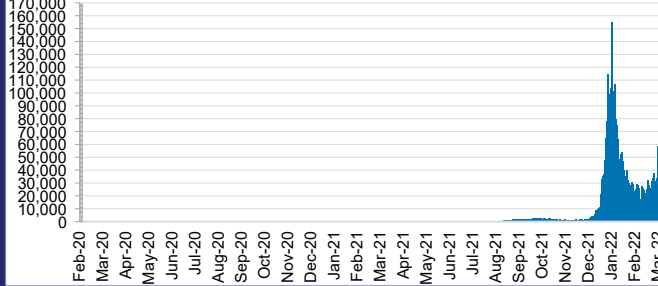




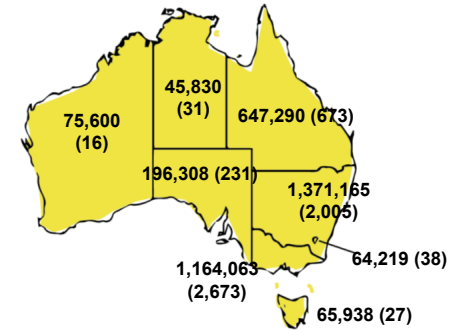
CURRENT STATUS OF CONFIRMED CASES



DAILY NUMBER OF REPORTED CASES



CASES (DEATHS) BY STATE AND TERRITORIES



92



ACT	NSW	NT	QLD	SA	TAS	VIC	WA
4	32	1	20	5	3	23	4



1,812

**CURRENT CASES
ADMITTED TO HOSPITALS**

ACT	NSW	NT	QLD	SA	TAS	VIC	WA
37	1,060	21	245	136	23	199	91

65,112,260



**TOTAL TESTS
REPORTED**

ACT	NSW	NT	QLD
946,433	29,273,985	732,825	6,948,462

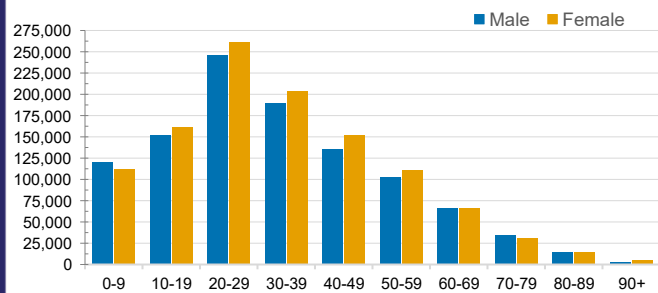
SA	TAS	VIC	WA
4,050,035	580,758	19,783,260	2,796,502

CASES IN AGED CARE SERVICES

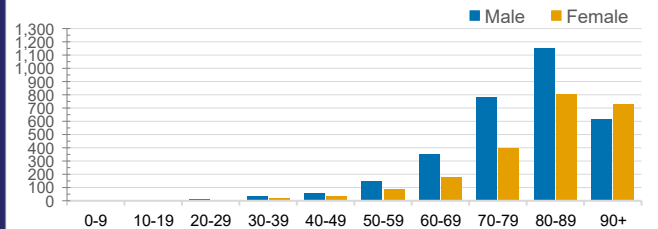
Confirmed Cases	Australia	ACT	NSW	NT	QLD	SA	TAS	VIC	WA
Residential Care Recipients	21691 (1873)	204 (16)	8308 (578)	130 (5)	4172 (217)	1564 (111)	199 (9)	6734 (934)	380 (3)
In Home Care Recipients	205 (13)	0	45 (3)	0	15	1	5 (2)	138 (7)	1 (1)

Cases in care recipients (deaths)

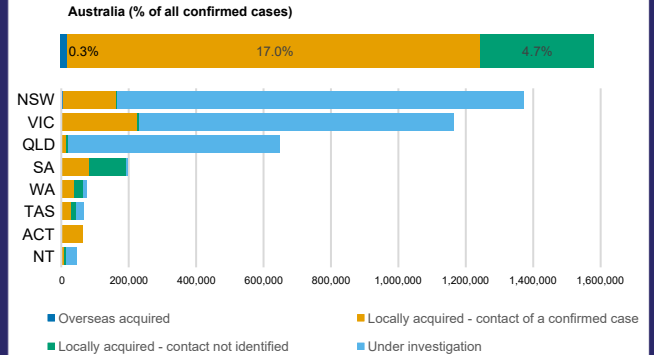
CASES BY AGE GROUP AND SEX



DEATHS BY AGE GROUP AND SEX



CASES BY SOURCE OF INFECTION



PUBLIC HEALTH RESPONSE MEASURE

