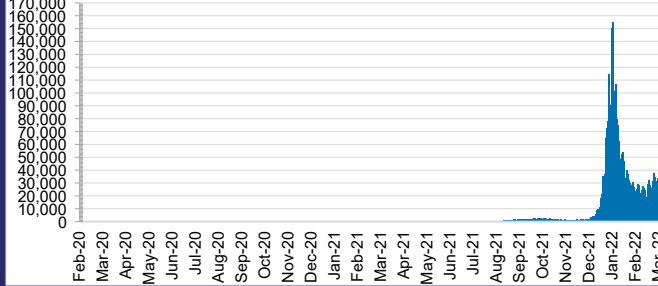




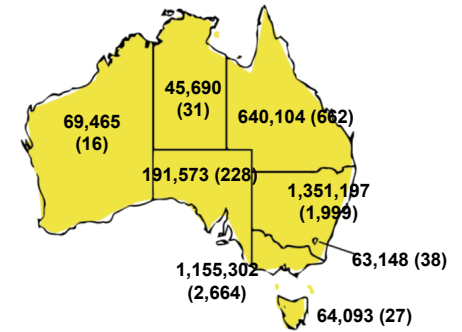
CURRENT STATUS OF CONFIRMED CASES



DAILY NUMBER OF REPORTED CASES



CASES (DEATHS) BY STATE AND TERRITORIES



96



ACT	NSW	NT	QLD	SA	TAS	VIC	WA
3	34	2	19	8	3	23	4

1,855



ACT	NSW	NT	QLD	SA	TAS	VIC	WA
39	1,036	23	263	132	25	197	140

65,010,968



ACT	NSW	NT	QLD
943,506	29,235,979	731,800	6,941,102

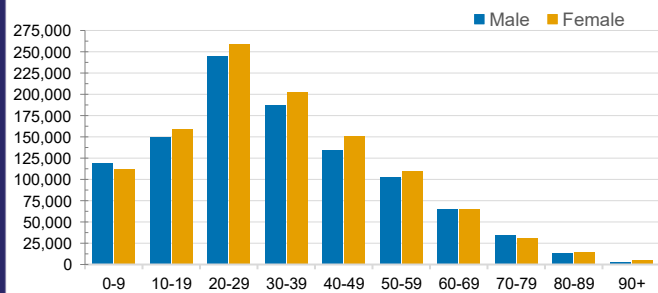
SA	TAS	VIC	WA
4,036,511	579,234	19,762,609	2,780,227

CASES IN AGED CARE SERVICES

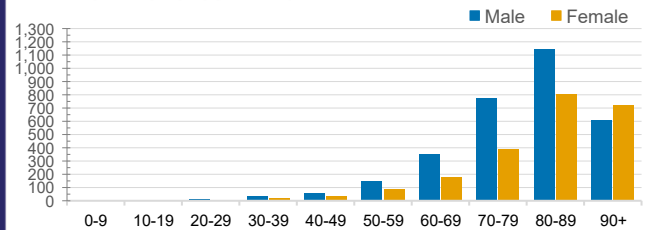
Confirmed Cases	Australia	ACT	NSW	NT	QLD	SA	TAS	VIC	WA
Residential Care Recipients	21568 (1870)	204 (16)	8281 (577)	130 (5)	4145 (217)	1545 (109)	198 (9)	6715 (934)	350 (3)
In Home Care Recipients	205 (13)	0	45 (3)	0	15	1	5 (2)	138 (7)	1 (1)

Cases in care recipients (deaths)

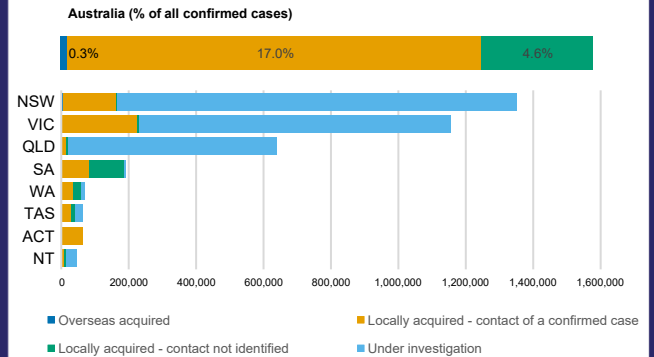
CASES BY AGE GROUP AND SEX



DEATHS BY AGE GROUP AND SEX



CASES BY SOURCE OF INFECTION



PUBLIC HEALTH RESPONSE MEASURE

