



CURRENT STATUS OF CONFIRMED CASES



105



ACT	NSW	NT	QLD	SA	TAS	VIC	WA
4	36	2	21	10	2	24	6

1,782



ACT	NSW	NT	QLD	SA	TAS	VIC	WA
39	1,016	24	255	136	18	201	93

64,889,929

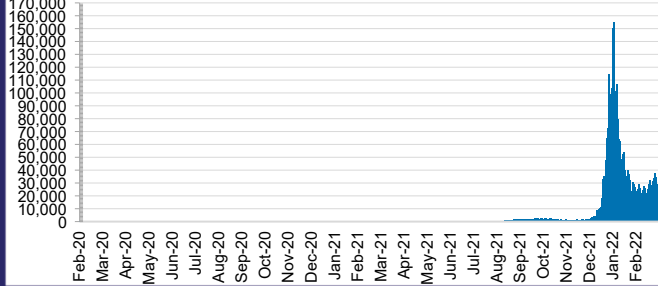


**TOTAL TESTS
REPORTED**

ACT	NSW	NT	QLD
940,102	29,188,484	730,983	6,931,324

SA	TAS	VIC	WA
4,021,340	577,805	19,739,595	2,760,296

DAILY NUMBER OF REPORTED CASES

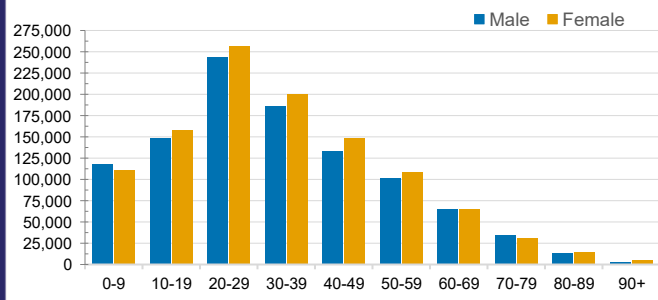


CASES IN AGED CARE SERVICES

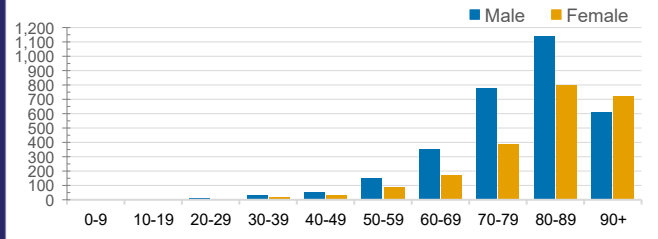
Confirmed Cases	Australia	ACT	NSW	NT	QLD	SA	TAS	VIC	WA
Residential Care Recipients	21405 (1863)	204 (16)	8236 (573)	130 (5)	4123 (216)	1524 (109)	197 (9)	6675 (934)	316 (1)
In Home Care Recipients	205 (13)	0	45 (3)	0	15	1	5 (2)	138 (7)	1 (1)

Cases in care recipients (deaths)

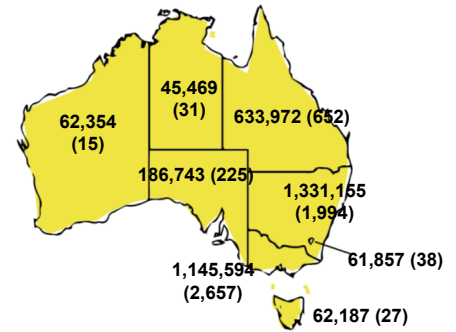
CASES BY AGE GROUP AND SEX



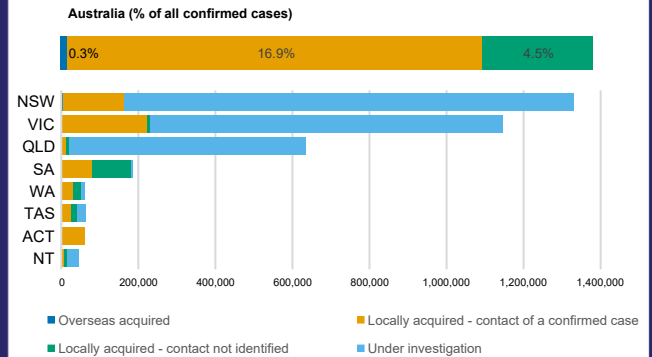
DEATHS BY AGE GROUP AND SEX



CASES (DEATHS) BY STATE AND TERRITORIES



CASES BY SOURCE OF INFECTION



PUBLIC HEALTH RESPONSE MEASURE

