



CURRENT STATUS OF CONFIRMED CASES



105



ACT	NSW	NT	QLD	SA	TAS	VIC	WA
4	38	2	19	10	3	24	5



1,801

ACT	NSW	NT	QLD	SA	TAS	VIC	WA
40	1,032	31	246	129	14	197	112

64,787,909

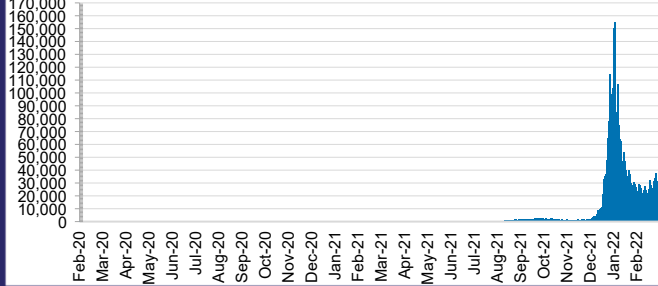


TOTAL TESTS REPORTED

ACT	NSW	NT	QLD
937,262	29,139,497	729,448	6,924,344

SA	TAS	VIC	WA
4,011,171	576,345	19,725,282	2,744,560

DAILY NUMBER OF REPORTED CASES

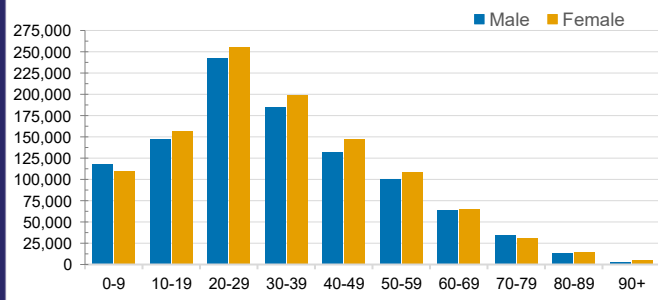


CASES IN AGED CARE SERVICES

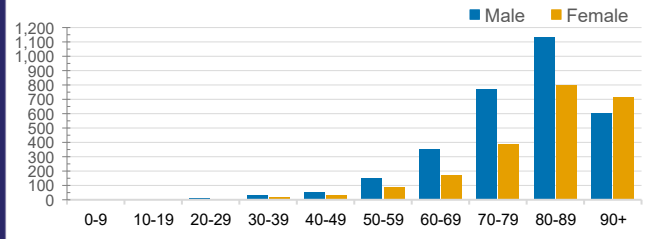
Confirmed Cases	Australia	ACT	NSW	NT	QLD	SA	TAS	VIC	WA
Residential Care Recipients	21171 (1856)	203 (16)	8146 (570)	130 (5)	4094 (212)	1503 (109)	197 (9)	6634 (934)	264 (1)
In Home Care Recipients	205 (13)	0	45 (3)	0	15	1	5 (2)	138 (7)	1 (1)

Cases in care recipients (deaths)

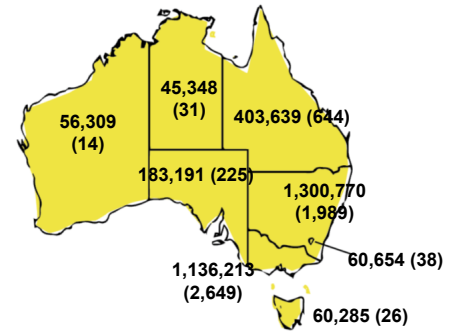
CASES BY AGE GROUP AND SEX



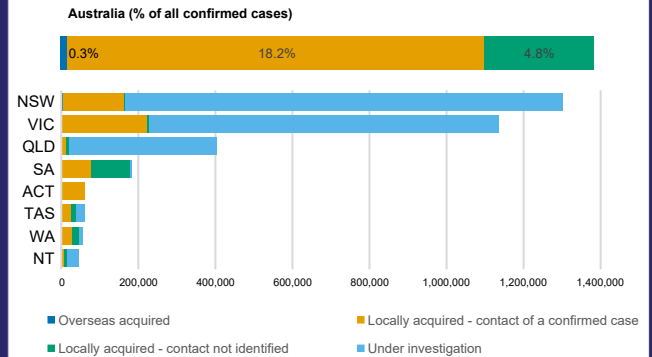
DEATHS BY AGE GROUP AND SEX



CASES (DEATHS) BY STATE AND TERRITORIES



CASES BY SOURCE OF INFECTION



PUBLIC HEALTH RESPONSE MEASURE

