



CURRENT STATUS OF CONFIRMED CASES



108



ACT	NSW	NT	QLD	SA	TAS	VIC	WA
1	44	2	17	10	4	25	5

1,702



ACT	NSW	NT	QLD	SA	TAS	VIC	WA
29	965	26	243	108	14	195	122

64,619,966

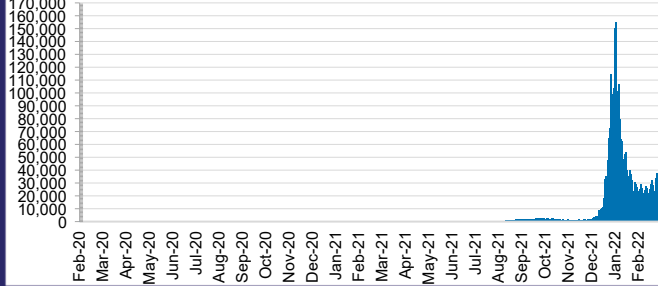


**TOTAL TESTS
REPORTED**

ACT	NSW	NT	QLD
933,472	29,077,696	727,924	6,916,785

SA	TAS	VIC	WA
3,994,096	574,814	19,702,832	2,692,347

DAILY NUMBER OF REPORTED CASES

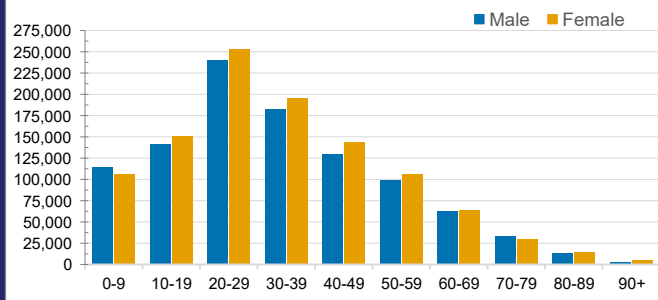


CASES IN AGED CARE SERVICES

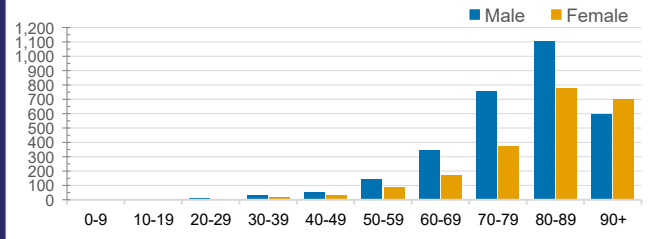
Confirmed Cases	Australia	ACT	NSW	NT	QLD	SA	TAS	VIC	WA
Residential Care Recipients	20728 (1844)	203 (16)	7911 (562)	129 (5)	4032 (209)	1494 (109)	197 (9)	6587 (934)	164
In Home Care Recipients	205 (13)	0	45 (3)	0	15	1	5 (2)	138 (7)	1 (1)

Cases in care recipients (deaths)

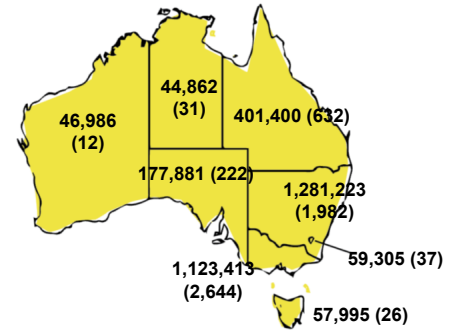
CASES BY AGE GROUP AND SEX



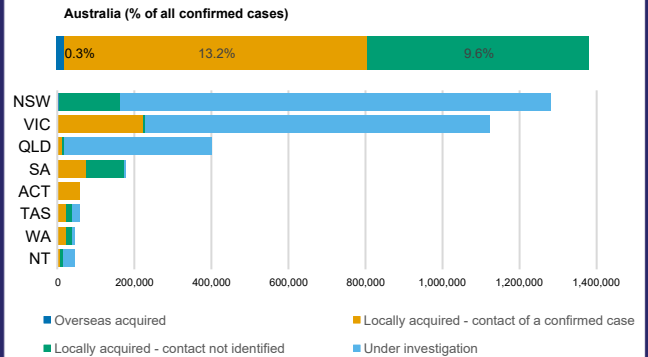
DEATHS BY AGE GROUP AND SEX



CASES (DEATHS) BY STATE AND TERRITORIES



CASES BY SOURCE OF INFECTION



PUBLIC HEALTH RESPONSE MEASURE

