



CURRENT STATUS OF CONFIRMED CASES



108



ACT	NSW	NT	QLD	SA	TAS	VIC	WA
2	39	2	17	11	5	32	0

1,688



ACT	NSW	NT	QLD	SA	TAS	VIC	WA
37	991	33	252	91	16	188	80

64,359,555

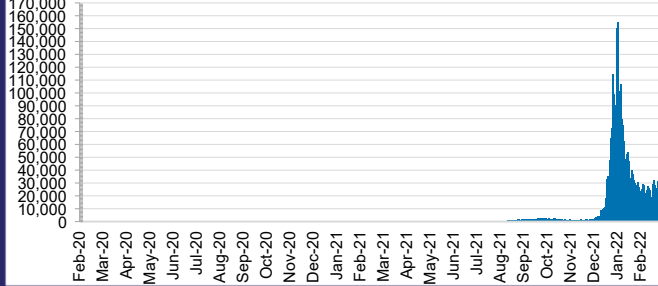


**TOTAL TESTS
REPORTED**

ACT	NSW	NT	QLD
926,214	28,962,875	724,211	6,898,236

SA	TAS	VIC	WA
3,960,758	571,626	19,653,136	2,662,499

DAILY NUMBER OF REPORTED CASES

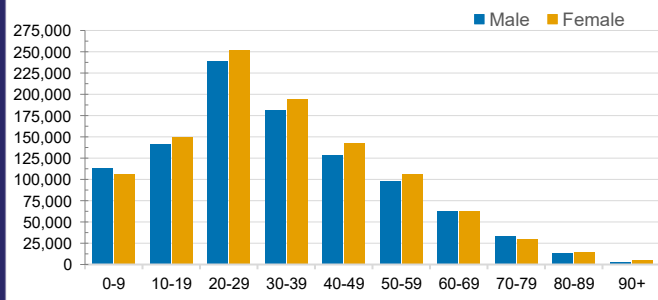


CASES IN AGED CARE SERVICES

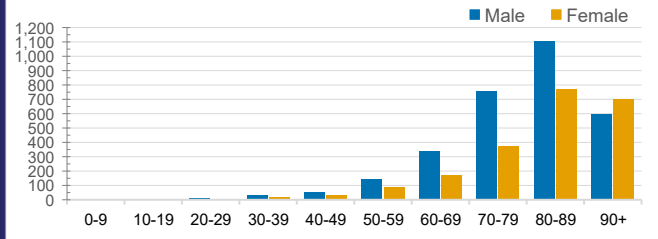
Confirmed Cases	Australia	ACT	NSW	NT	QLD	SA	TAS	VIC	WA
Residential Care Recipients	20643 (1838)	203 (16)	7885 (560)	129 (5)	4027 (209)	1482 (108)	196 (9)	6557 (931)	164
In Home Care Recipients	205 (13)	0	45 (3)	0	15	1	5 (2)	138 (7)	1 (1)

Cases in care recipients (deaths)

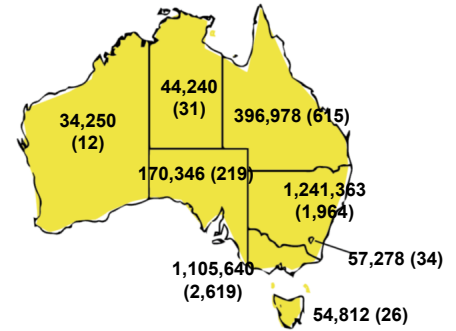
CASES BY AGE GROUP AND SEX



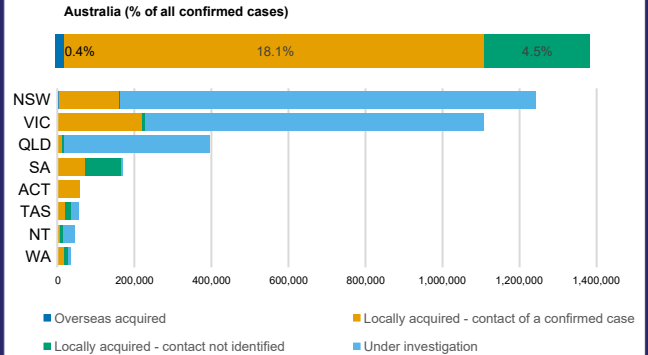
DEATHS BY AGE GROUP AND SEX



CASES (DEATHS) BY STATE AND TERRITORIES



CASES BY SOURCE OF INFECTION



PUBLIC HEALTH RESPONSE MEASURE

