



Australian Government
Operation COVID Shield

COVID-19 Vaccine Roll-out

07 February 2022

Data as at:
06 Feb 2022

Total vaccine doses



51,152,055 total vaccine doses administered nationally as at 06 February

+70,718 recorded in the last 24 hours



19,743,217

people have had at least one dose

>95%

of people over the age of 16 have had at least one dose



19,321,803

people are fully vaccinated

93.7%

of people over the age of 16 are fully vaccinated



8,997,661

people over the age of 16 who have received more than two doses

NSW
16,149,327
(+9,863 daily increase)

VIC
13,498,349
(+25,048 daily increase)

QLD
9,824,980
(+12,452 daily increase)

WA
5,268,326
(+12,821 daily increase)

TAS
1,130,848
(+1,506 daily increase)

SA
3,512,667
(+5,963 daily increase)

ACT
1,271,445
(+2,500 daily increase)

NT
496,113
(+565 daily increase)

*Administration state breakdown indicates state in which a vaccine was administered

**Overall dose count includes instances of more than two doses per person in a small number of cases.

Source: Australian Immunisation Register

Booster Vaccinations

Data as at:
06 Feb 2022



8,997,661 total people over the age of 16 years old who have received more than two doses nationally

+56,141 people who have received more than two doses nationally in the last 24 hours

NSW
2,886,740
(8,846 daily increase)

VIC
2,411,193
(21,657 daily increase)

QLD
1,615,611
(9,107 daily increase)

WA
920,967
(9,028 daily increase)

TAS
194,448
(624 daily increase)

SA
647,306
(4,434 daily increase)

ACT
192,317
(1,627 daily increase)

NT
71,460
(429 daily increase)

57,619 doses administered to persons residing in other territories or with missing residential information

Source: Australian Immunisation Register

Data as at:
06 Feb 2022

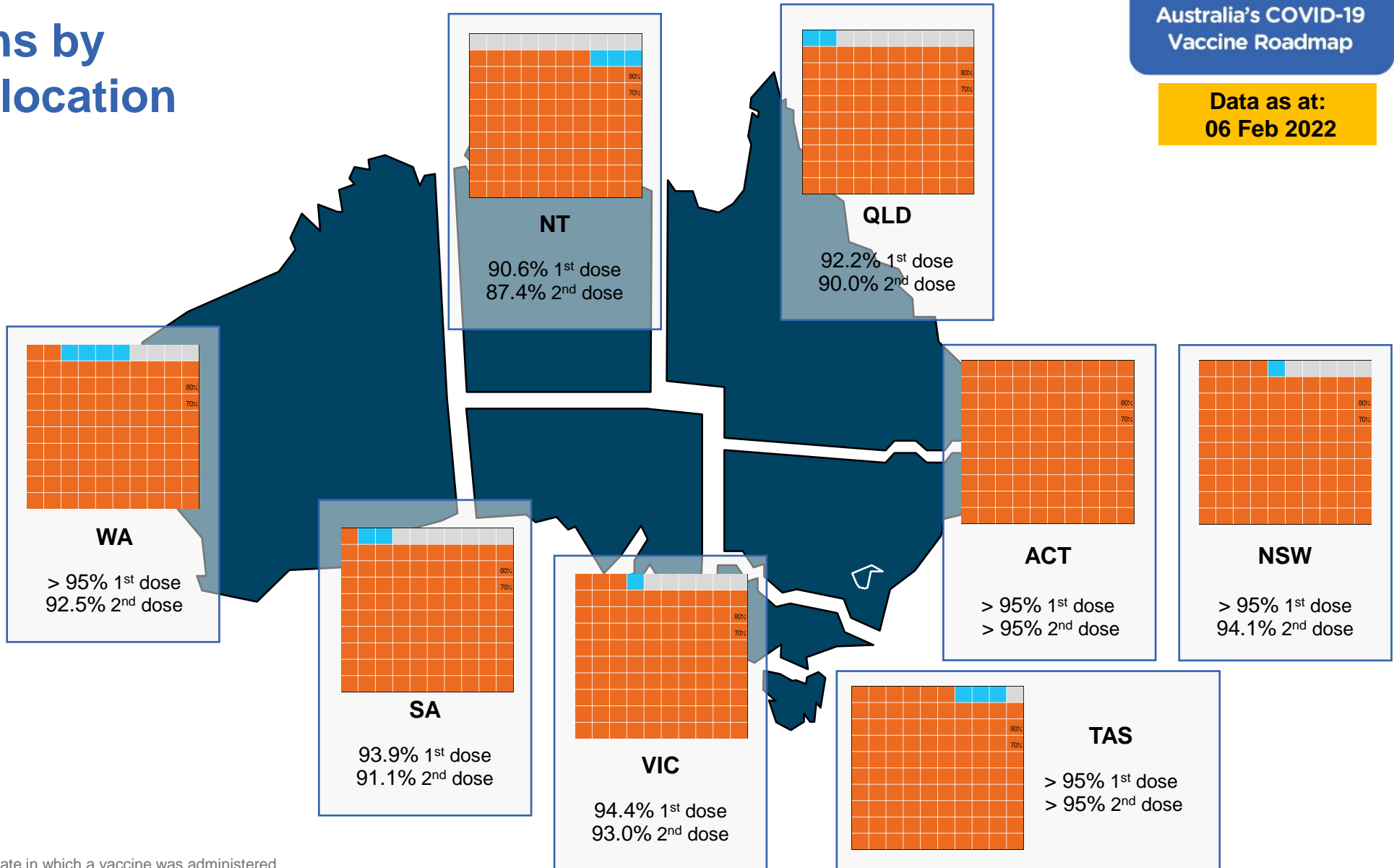
Vaccinations by residential location

First doses

Age	Today	4 weeks ago	8 weeks ago
16+	>95%	94.9%	93.7%
50+	>95%	>95%	>95%
70+	>95%	>95%	>95%

Fully vaccinated

Age	Today	4 weeks ago	8 weeks ago
16+	93.7%	92.3%	89.8%
50+	>95%	>95%	>95%
70+	>95%	>95%	>95%



*Residential state may differ from the state in which a vaccine was administered

Commonwealth and Jurisdiction vaccine doses administered

Data as at:
06 Feb 2022



51,152,055 total vaccine doses administered nationally as at 06 February

+ 70,718 recorded in the last 24 hours



19,442,423

doses administered by state and territory facilities

+ 33,603

recorded in the last 24 hours

NSW	Jurisdictions	Commonwealth
Cumulative	4,860,041	11,289,286
Daily increase	416	9,447

TAS	Jurisdictions	Commonwealth
Cumulative	565,156	565,692
Daily increase	1,105	401

VIC	Jurisdictions	Commonwealth
Cumulative	5,619,746	7,878,603
Daily increase	12,599	12,449

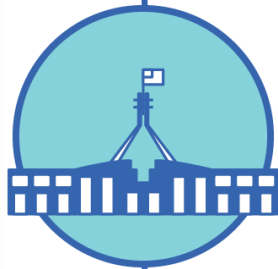
SA	Jurisdictions	Commonwealth
Cumulative	1,631,972	1,880,695
Daily increase	4,185	1,778

QLD	Jurisdictions	Commonwealth
Cumulative	3,628,016	6,196,964
Daily increase	6,316	6,136

ACT	Jurisdictions	Commonwealth
Cumulative	646,525	624,920
Daily increase	1,960	540

WA	Jurisdictions	Commonwealth
Cumulative	2,200,016	3,068,310
Daily increase	6,482	6,339

NT	Jurisdictions	Commonwealth
Cumulative	290,951	205,162
Daily increase	540	25



31,709,632

doses administered by commonwealth facilities

+ 37,115

recorded in the last 24 hours

30,473,594 total vaccine doses administered in primary care settings

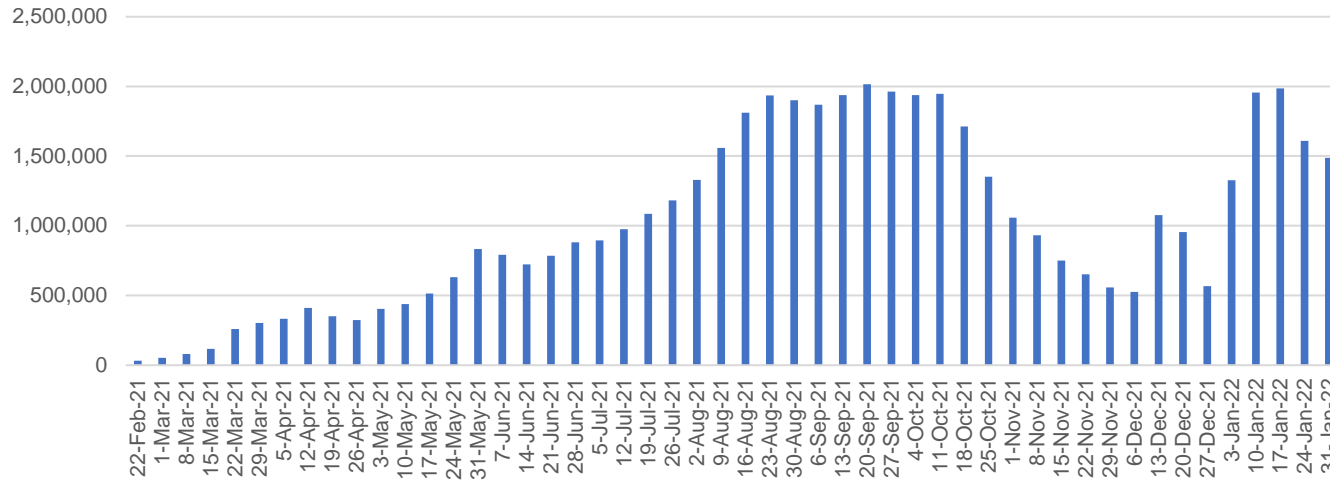
1,236,038 total vaccine doses administered in aged care and disability settings

Vaccine milestone charts

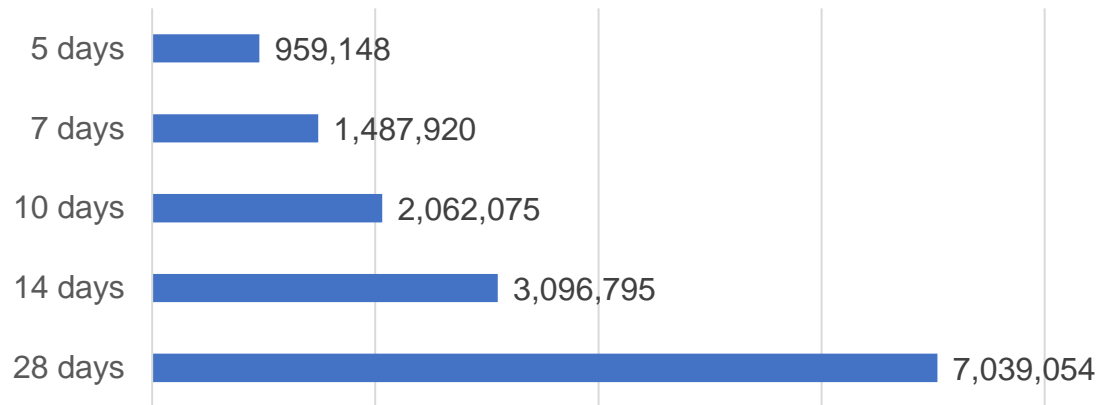
Data as at:
06 Feb 2022

Australia's COVID-19
Vaccine Roadmap

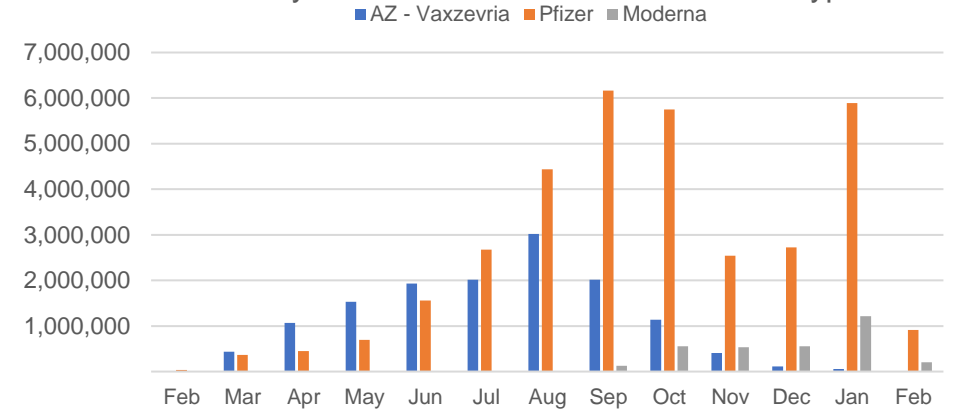
Doses Administered by Week



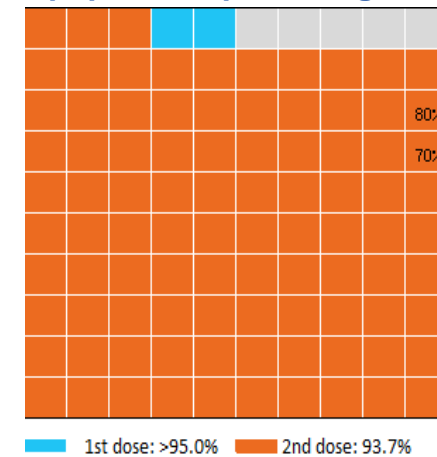
Doses Reported



Doses by administration month and vaccine type



Eligible population percentage coverage



*Each square represents 1% of the national population. Squares are filled as milestones are achieved.

*Sourced from the Australian Immunisation Register.

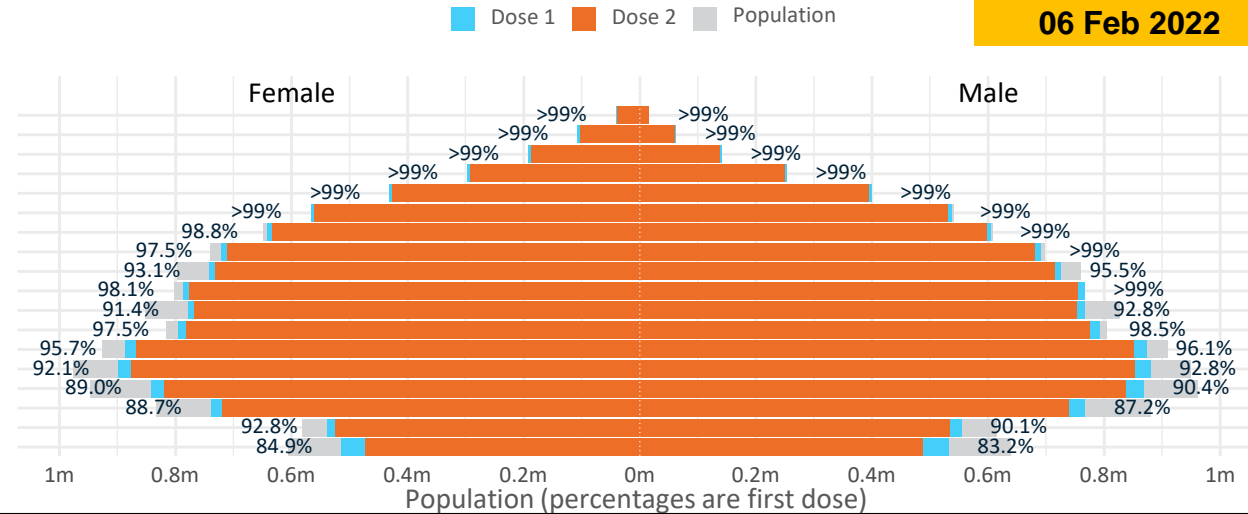
Doses by age and sex

First and second doses by age and sex

	16+	50+	12-15	5-11
Dose 1	95.75% (19,743,217 doses / 20,619,959 people)	>99% (8,728,758 doses / 8,749,703 people)	84.06% (1,045,686 doses / 1,243,990 people)	44.99% (1,024,176 doses / 2,276,638 people)
Dose 2	93.70% (19,321,803 doses / 20,619,959 people)	98.25% (8,596,531 doses / 8,749,703 people)	77.27% (961,205 doses / 1,243,990 people)	0.20% (4,488 doses / 2,276,638 people)

Data as at:
06 Feb 2022

Age	Dose 1	Dose 2
95+	57,163 (>99%)	53,493 (>99%)
90-94	169,731 (>99%)	163,069 (>99%)
85-89	333,551 (>99%)	324,654 (>99%)
80-84	550,715 (>99%)	541,082 (>99%)
75-79	830,720 (>99%)	819,816 (>99%)
70-74	1,104,354 (>99%)	1,090,751 (98.7%)
65-69	1,248,233 (>99%)	1,231,528 (97.9%)
60-64	1,412,732 (98.3%)	1,393,296 (97.0%)
55-59	1,467,995 (94.4%)	1,447,716 (93.1%)
50-54	1,553,564 (>99%)	1,531,126 (97.9%)
45-49	1,546,168 (92.2%)	1,520,857 (90.7%)
40-44	1,590,866 (98.2%)	1,559,405 (96.2%)
35-39	1,764,311 (96.1%)	1,722,968 (93.9%)
30-34	1,785,987 (92.8%)	1,734,183 (90.1%)
25-29	1,720,742 (90.3%)	1,664,279 (87.3%)
20-24	1,512,099 (88.3%)	1,464,374 (85.5%)
16-19	1,094,286 (91.5%)	1,059,206 (88.6%)
12-15	1,045,686 (84.1%)	961,205 (77.3%)



	AUS	ACT	NSW	NT	QLD	SA	TAS	VIC	WA
16 and over - dose 1	19,743,217	349,391	6,270,574	172,685	3,791,525	1,352,498	438,477	5,102,891	2,038,545
16 and over - dose 2	19,321,803	344,382	6,177,562	166,496	3,700,192	1,311,733	425,783	5,031,214	1,956,673
16 and over - population	20,619,959*	344,037	6,565,651	190,571	4,112,707	1,440,400	440,172	5,407,574	2,114,978
16 and over % with dose 1	95.75%	>99%	95.51%	90.61%	92.19%	93.90%	>99%	94.37%	96.39%
16 and over % with dose 2	93.70%	>99%	94.09%	87.37%	89.97%	91.07%	96.73%	93.04%	92.52%
5 to 11 - dose 1	1,024,176	29,045	309,273	10,988	188,907	72,842	25,992	286,209	94,978
5 to 11 - dose 2	4,488	105	1,905	44	798	116	29	1,311	155
5 to 11 - population	2,276,638	39,789	716,460	24,750	478,731	148,816	45,033	578,499	244,154
5 to 11 % with dose 1	44.99%	73.00%	43.17%	44.40%	39.46%	48.95%	57.72%	49.47%	38.90%
5 to 11 % with dose 2	0.20%	0.26%	0.27%	0.18%	0.17%	0.08%	0.06%	0.23%	0.06%
12 to 15 - dose 1	1,045,686	20,006	325,546	10,795	206,374	67,523	22,605	275,440	108,168
12 to 15 - dose 2	961,205	19,134	306,877	9,410	185,828	61,149	20,413	260,924	89,744
12 to 15 - population	1,243,990	19,693	390,330	13,060	270,146	82,747	26,308	308,611	132,869
12 to 15 % with dose 1	84.06%	>99%	83.40%	82.66%	76.39%	81.60%	85.92%	89.25%	81.41%
12 to 15 % with dose 2	77.27%	97.16%	78.62%	72.05%	68.79%	73.90%	77.59%	84.55%	67.54%

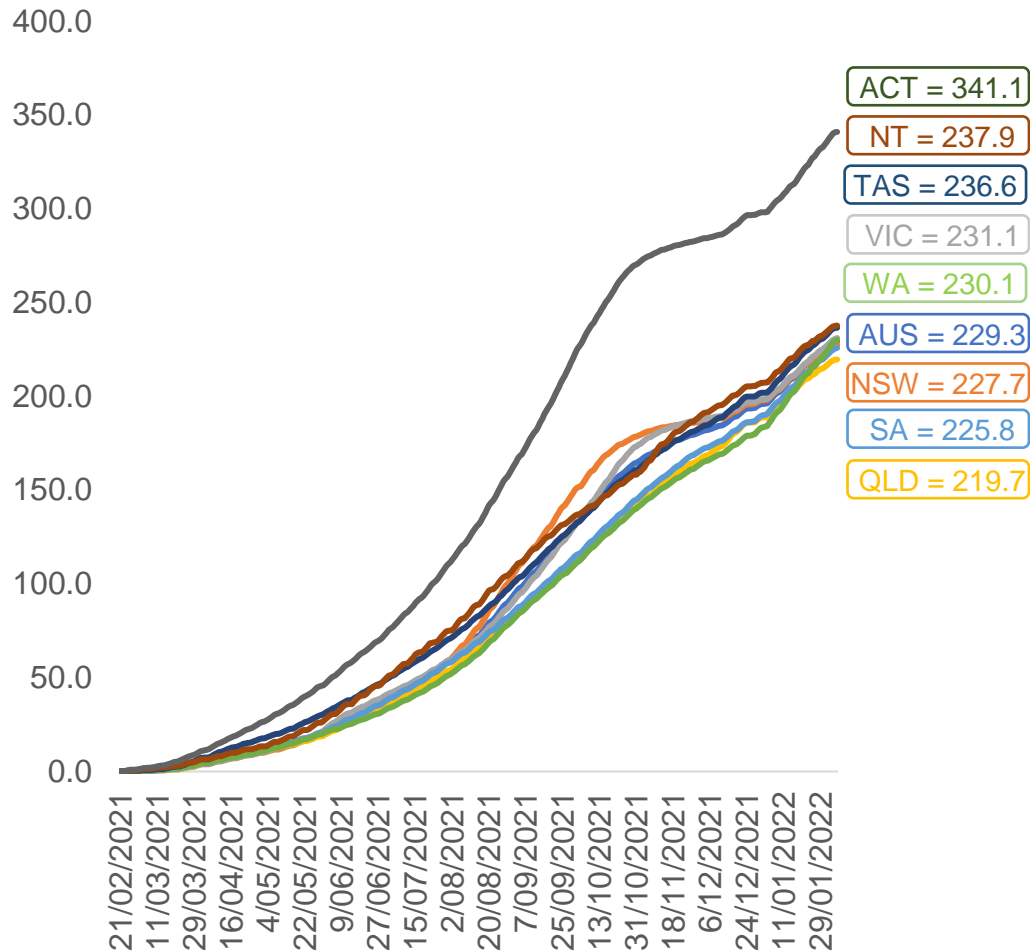
*National population will not equal sum of listed jurisdictions due to a small number of people counted in national population residing in some 'other' territories. Sum of state doses will not add to national total as some records are unable to be geocoded to a State or Territory. Doses sourced from Australian Immunisation Register, population from ABS ERP June 2020

Vaccinations by location

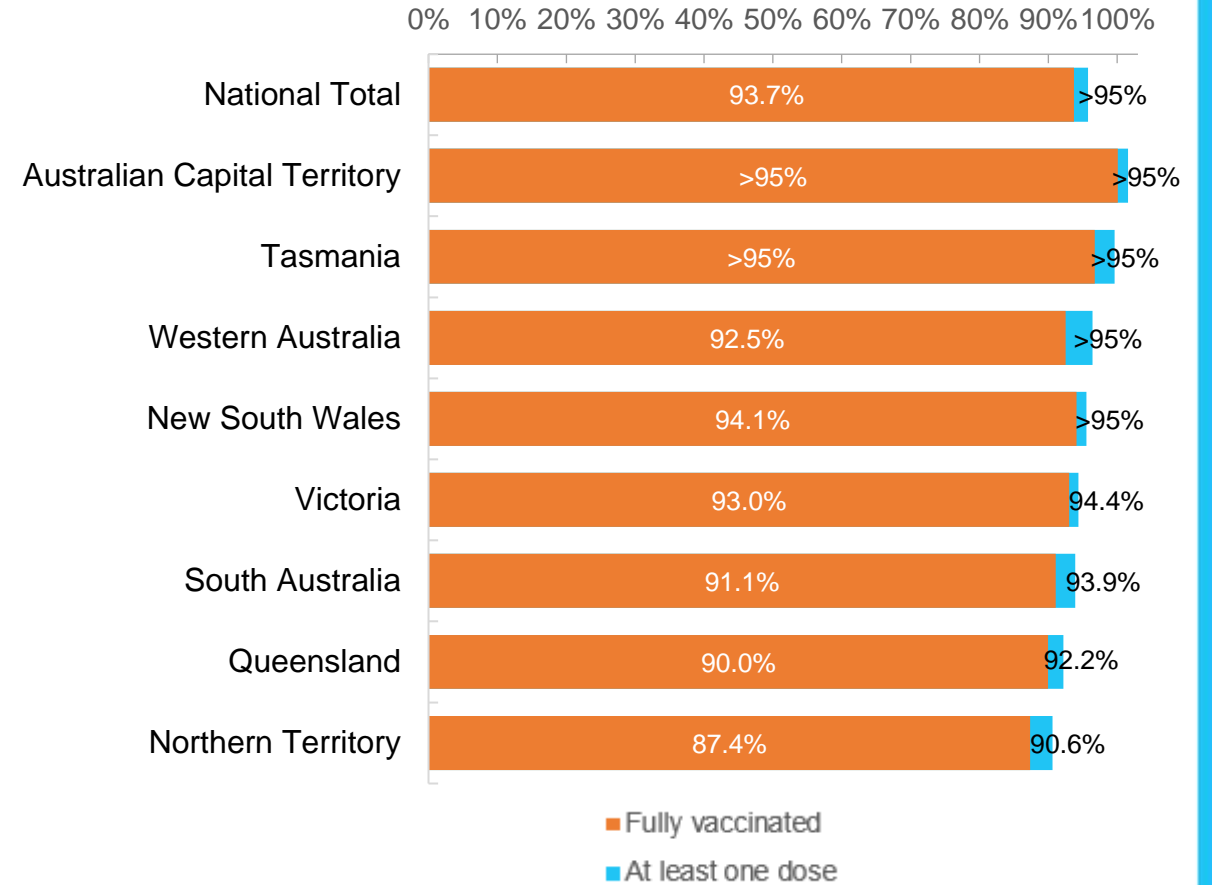
Data as at:
06 Feb 2022

Australia's COVID-19
Vaccine Roadmap

Cumulative total doses administered vs eligible state populations*



First and Second Doses by residential location



*Not an indication of percentage vaccinated, numbers will exceed 100 due to multiple doses required per person of the population. All doses are included for those aged 12 and above, and are based on vaccination provider location.

Aboriginal and Torres Strait Islander peoples

Number of people vaccinated

Data as at:
01 Feb 2022
Updated weekly

Australia's COVID-19
Vaccine Roadmap



426,625

people over the age of 16
have had at least one dose

81.8%

of people over the age of 16
have had at least one dose



395,442

people over the age of 16
are fully vaccinated

75.8%

of people over the age of 16 are
fully vaccinated



**46,238
(65.0%)**

people aged 12-15 years
have had at least one dose

174 Aboriginal community controlled health services (ACCHS)

0#	50	27	42	12	3	21	19
ACT	NSW	NT	QLD	SA	TAS	VIC	WA

Medicare Address State ^{##}	Individuals Dose 1	Individuals Dose 1 %	Individuals Dose 2	Individuals Dose 2 %
Australian Capital Territory	4,885	90.9%	4,745	88.3%
New South Wales	135,563	86.4%	131,880	84.1%
Northern Territory	41,250	87.4%	37,575	79.6%
Queensland	112,403	79.2%	103,321	72.8%
South Australia	19,356	77.3%	17,307	69.1%
Tasmania	14,361	87.3%	13,624	82.8%
Victoria	35,241	89.0%	34,245	86.4%
Western Australia	47,736	75.6%	39,514	62.6%
Unknown/Other Territories	15,830	61.2%	13,231	51.2%
Totals	426,625	81.8%	395,442	75.8%

Source: Australian Immunisation Register

*Identifying as Aboriginal and Torres Strait Islander is optional and the estimated population may be under reported.

**Includes all Aboriginal and Torres Strait Islander peoples who have received a vaccination, not limited to those administered in an ACCHS setting

#ACCHS in the ACT are currently operating as a Commonwealth Vaccine Clinics so not included to avoid double counting

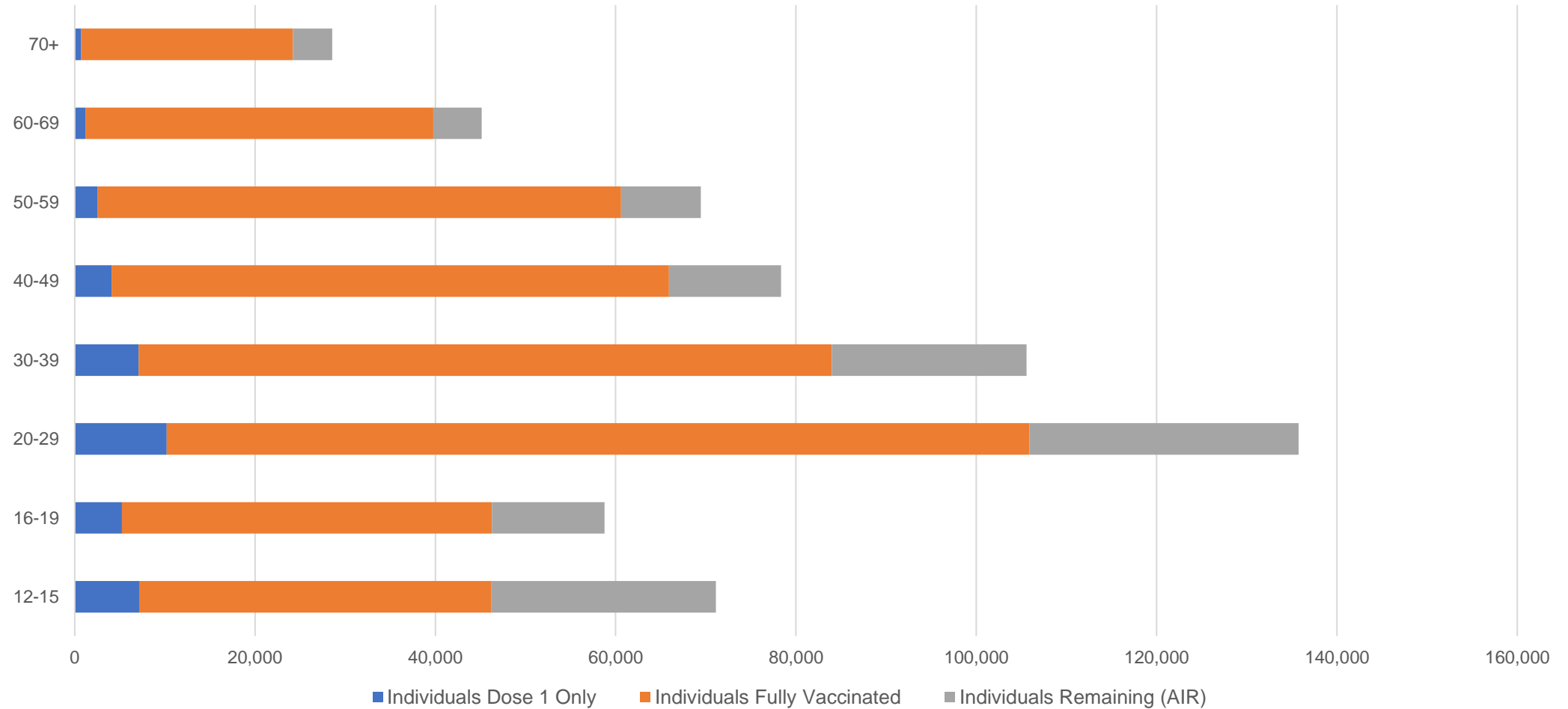
##The above table includes all identified Aboriginal and Torres Strait Islander people who are aged 16 and above by their state of residence.

Aboriginal and Torres Strait Islander peoples

Number of people vaccinated by age

Data as at:
01 Feb 2022
Updated weekly

Australia's COVID-19
Vaccine Roadmap



Source: Australian Immunisation Register

Commonwealth primary care

Data as at:
06 Feb 2022

Australia's COVID-19
Vaccine Roadmap



Primary care vaccine administration sites

5,745	128	174	3,537
GPs	CVCs	ACCHS	Pharmacies



30,473,594 total vaccine doses administered
primary care settings as at 06 February
+ 36,591 recorded in the last 24 hours

Primary care vaccinations by provider type

	Doses administered	Daily increase	7 day increase
General Practice* includes other Commonwealth	25,266,340	27,281	756,221
Pharmacy	5,207,254	9,310	365,595



232,301

doses administered to persons
residing in other territories or with
missing residential information

*General practice includes Commonwealth Vaccination Clinics, Aboriginal Community Health Centres, Royal Flying Doctor Service and other Commonwealth vaccination facilities

Source: Australian Immunisation Register

Data as at:
06 Feb 2022

Commonwealth aged care and disability doses administered



1,236,038 (+ 524 last 24 hours)

Total vaccine doses administered in aged care and disability facilities as at 06 February

Number of doses administered as part of the Commonwealth aged and disability care rollout

NSW
551,598
(+55 daily increase)

VIC
234,678
(+216 daily increase)

QLD
194,670
(+26 daily increase)

WA
96,476
(+151 daily increase)

TAS
21,940
(+11 daily increase)

SA
82,711
(+78 daily increase)

ACT
16,101
(+0 daily increase)

NT
7,010
(+3 daily increase)

30,854

doses administered to persons residing in other territories or with missing residential information

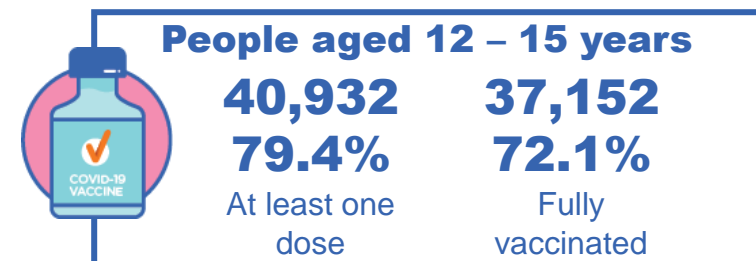
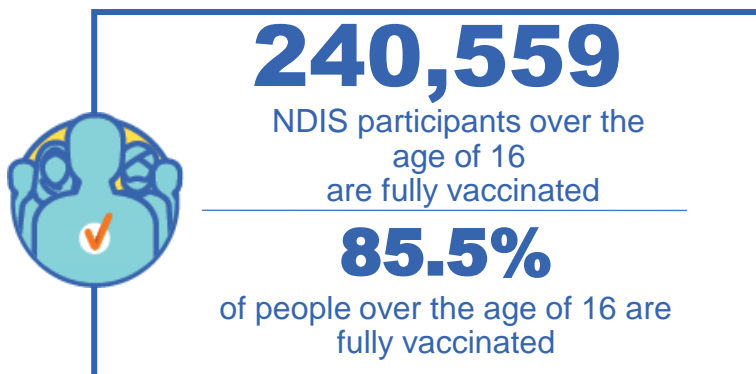
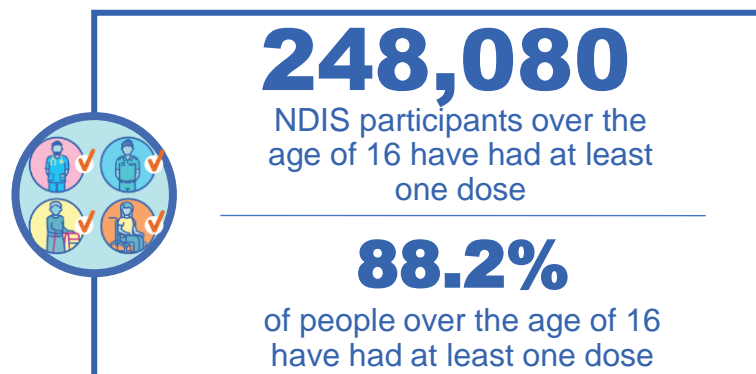
*Sourced from the Australian Immunisation Register. Includes all persons vaccinated at participating residential aged care, disability and related industry settings.
**State level breakdown indicates the residential location and may not align to the state in which the vaccination occurred.

Source: Australian Immunisation Register

National Disability Insurance Scheme (NDIS) reported vaccinations

Data as at:
03 February 2022
Updated weekly

Australia's COVID-19
Vaccine Roadmap



NDIS participant vaccinations

	People aged 16+ with at least one dose	People aged 16+ fully vaccinated	% People aged 16+ with at least one dose	% People aged 16+ fully vaccinated
ACT	4,762	4,685	90.6%	89.1%
NSW	77,192	75,790	88.9%	87.3%
NT	2,144	2,027	79.3%	74.9%
QLD	48,483	46,777	87.2%	84.1%
SA	19,860	19,227	85.7%	82.0%
TAS	6,181	5,916	87.8%	84.0%
VIC	66,432	65,066	89.6%	87.7%
WA	22,788	20,269	86.7%	80.2%
National	248,080	240,559	88.2%	85.5%

Source: Linkage between National Disability Insurance Agency data and the Australian Immunisation Register. Total NDIS participant numbers as at 17th October. Australian Immunisation Register data as at 02 February. Includes all participants regardless of residence type.

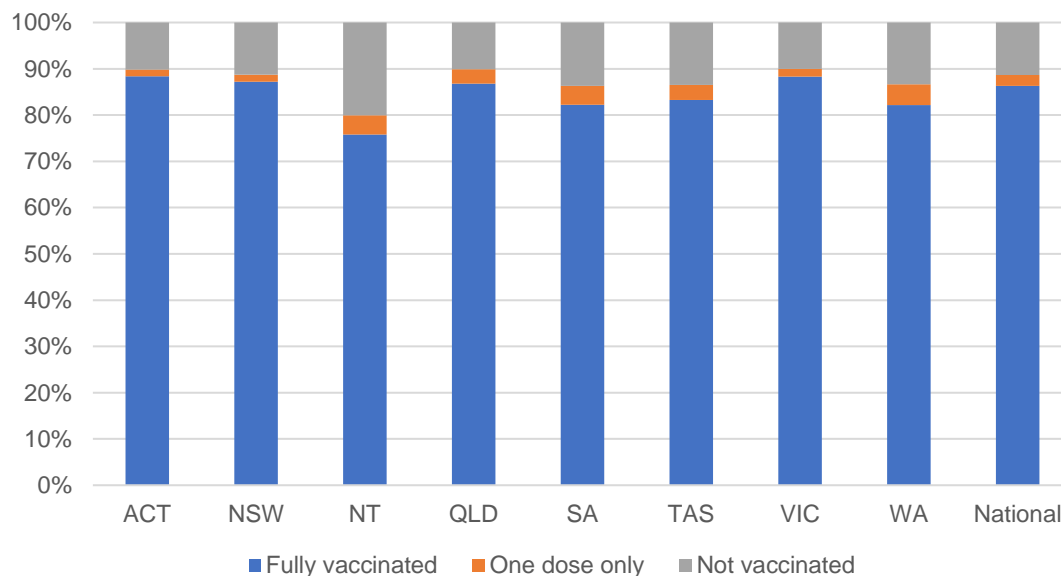
National Disability Insurance Scheme (NDIS) reported vaccinations

Data as at:
03 February 2022
Updated Weekly

Australia's COVID-19
Vaccine Roadmap

NATIONAL	Total people with at least one dose	People fully vaccinated	Total number of individuals in cohort	% People with at least one dose	% People fully vaccinated
NDIS participants living in disability accommodation	20,267	19,748	22,800	88.9%	86.6%

NDIS participants in disability and aged care accommodation



Source: Linkage between National Disability Insurance Agency data and the Australian Immunisation Register. Includes participants residing in disability accommodation only.
Source: Total NDIS participant numbers as at 17th October. Participant data as at 02 February. Australian Immunisation Register data as at 02 February. Worker data as at 3 February.

NDIS workforce vaccinations

	NDIS workers with at least one dose	NDIS workers fully vaccinated	% NDIS workers with at least one dose	% NDIS workers fully vaccinated
NSW	110,391	109,861	96.9%	96.4%
VIC	104,674	104,202	98.1%	97.7%
QLD	65,088	64,189	96.4%	95.1%
WA	31,259	28,812	97.8%	90.1%
SA	33,838	32,784	97.4%	94.3%
TAS	10,180	10,015	99.5%	97.9%
ACT	3,413	3,405	99.4%	99.2%
NT	3,052	3,008	99.3%	97.9%
TOTAL	361,895	356,276	97.4%	95.9%

Source: the NDIS Commission has established a requirement for registered NDIS providers who provide intensive disability support services to report on the vaccination status of workers they employ, or otherwise engage, to deliver NDIS-funded supports and services, and who are required to be vaccinated in accordance with in-force state and territory public health orders. The statistics reflect data reported to the NDIS Commission by registered NDIS providers and should be considered indicative and subject to change

Note: Some registered NDIS providers are yet to report on the vaccination status of their workforce. The NDIS Commission is working with those providers around reporting requirements.

Remaining workers not included include those exempt from vaccination requirements, workers whose vaccination status is not yet verified by the provider (such as workers on leave) and provider reporting anomalies.

Residential aged care vaccination rollout

Data as at: 06 Feb 2022

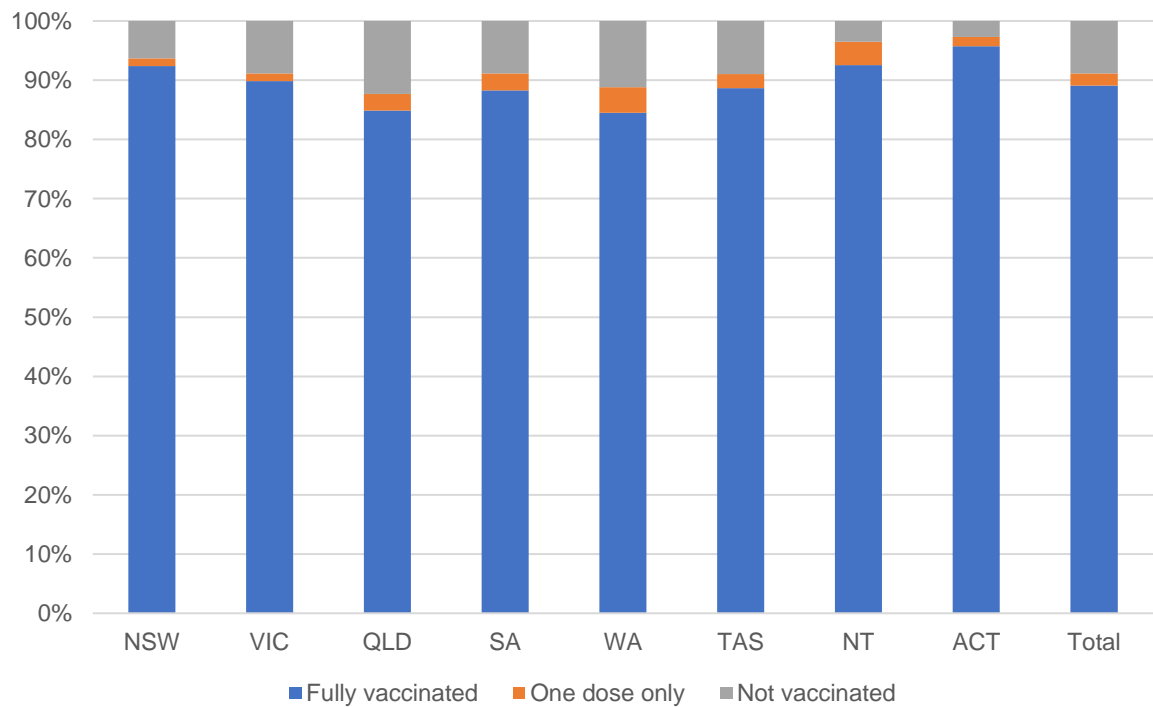
Residential aged care facilities status

100% Commonwealth facilities visited (2,590 planned sites)

169,875 People fully vaccinated

173,776 People with at least one dose

Aged care resident vaccinations



Aged care worker vaccinations

Jurisdictions	Total workers with at least one dose	Workers fully vaccinated	% Workers with at least one dose	% Workers fully vaccinated
NSW	78,555	78,520	98.7%	98.7%
VIC	70,636	70,634	99.1%	99.1%
QLD	49,034	49,021	99.3%	99.3%
SA	26,940	26,898	98.3%	98.2%
WA	23,851	23,689	98.7%	98.0%
TAS	7,652	7,641	100.0%	99.9%
NT	862	862	100.0%	100.0%
ACT	2,944	2,944	100.0%	100.0%
Total	260,474	260,209	98.9%	98.8%

Source: My Aged Care Portal vaccination progress

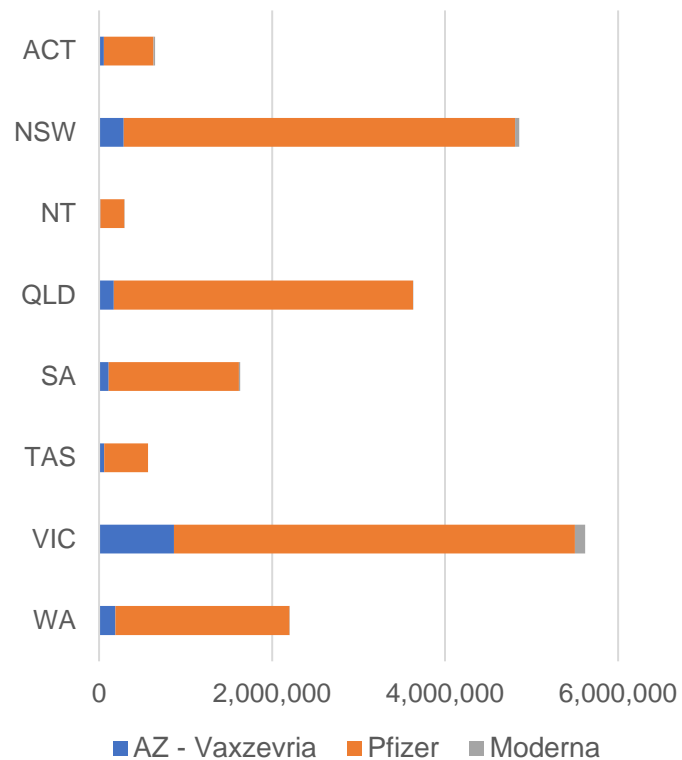
*Status updates are provided by facilities at least once per week. Reporting is updated Monday to Friday to encompass different facility updates being made on different days.

Data is sourced directly from Aged Care Service Providers and is not drawn or closely aligned with data from AIR due to inconsistencies and potential lags in uploading of records.

Data as at:
06 Feb 2022

Jurisdiction administered

Total vaccine doses administered in State and Territory clinics as at 06 February



19,442,423 total vaccine doses administered in State and Territory clinics as at 06 February
 + **33,603** recorded in the last 24 hours
 + **351,220** recorded in the last 7 days

NSW
4,860,041
 (+416 daily increase)

VIC
5,619,746
 (+12,599 daily increase)

QLD
3,628,016
 (+6,316 daily increase)

WA
2,200,016
 (+6,482 daily increase)

TAS
565,156
 (+1,105 daily increase)

SA
1,631,972
 (+4,185 daily increase)

ACT
646,525
 (+1,960 daily increase)

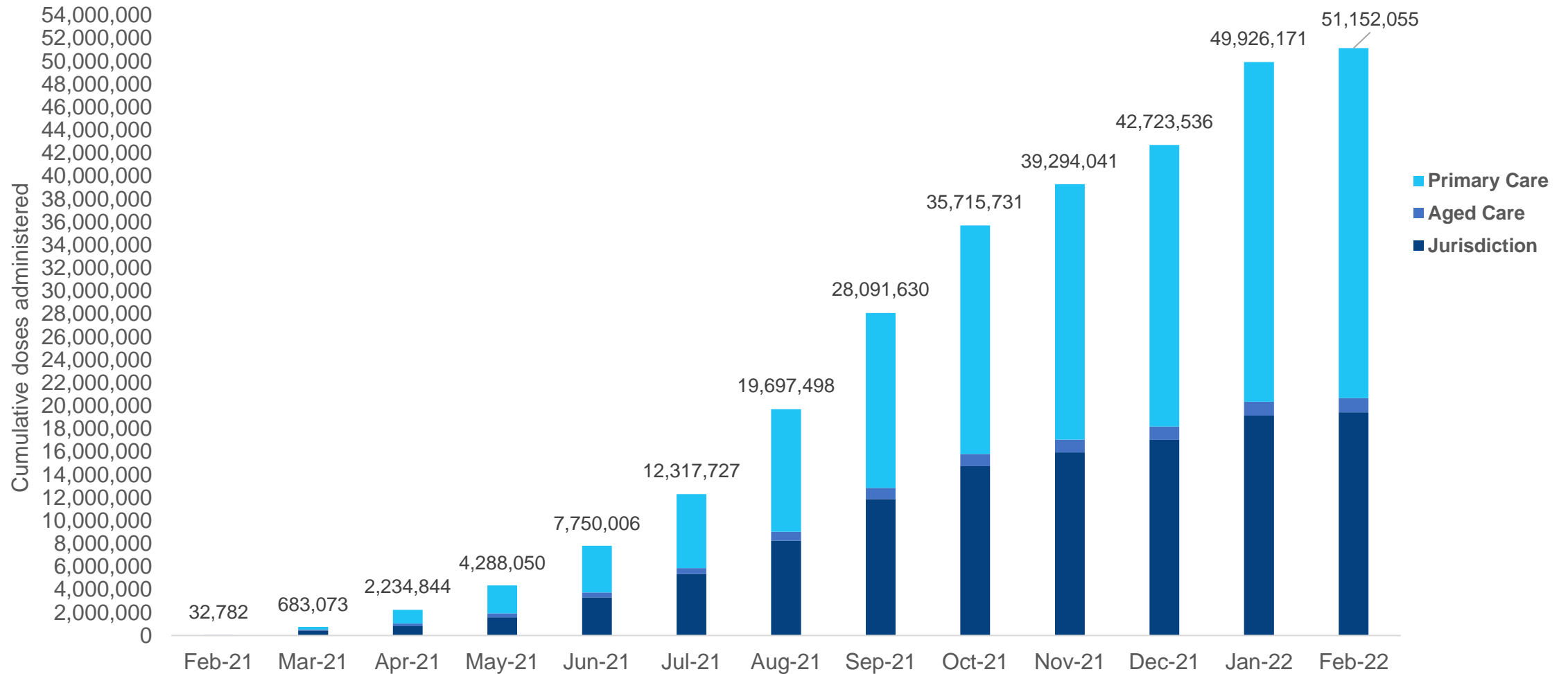
NT
290,951
 (+540 daily increase)

*Sourced from the Australian Immunisation Register. Numbers are calculated as difference in daily cumulative reported numbers to allow for historical corrections.

Source: Australian Immunisation Register

Data as at:
06 Feb 2022

Cumulative doses administered by channel



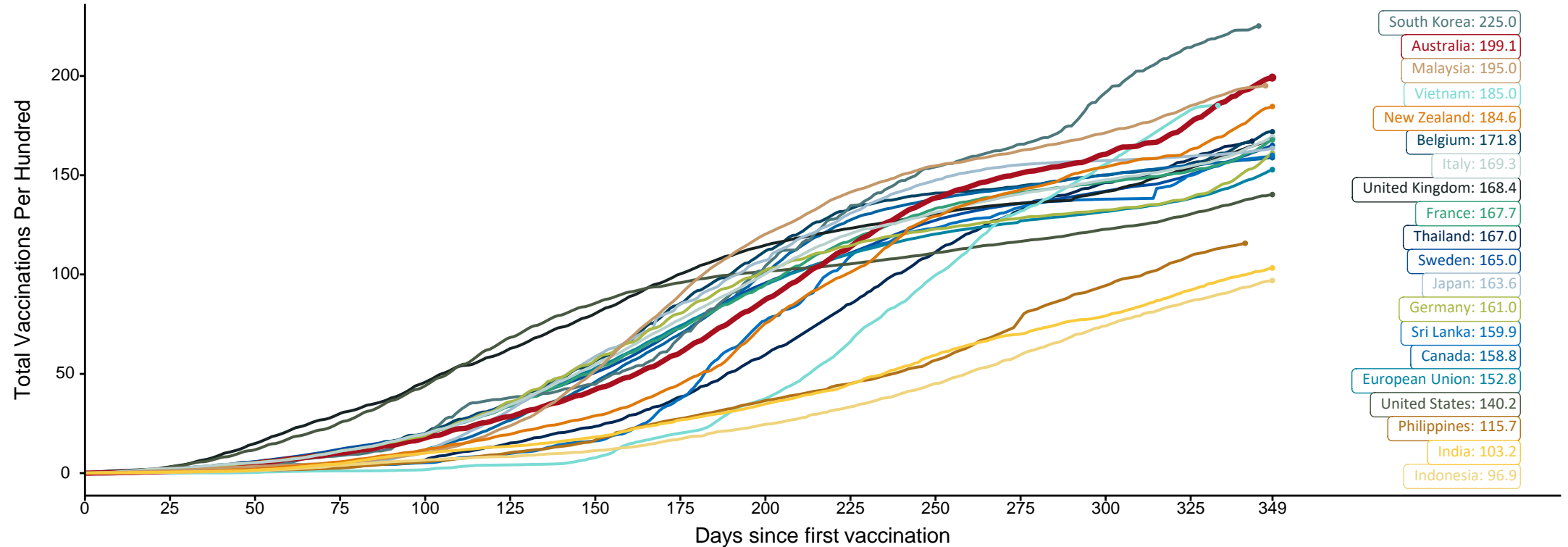
Source: Australian Immunisation Register

Doses at equivalent stages of rollout (Day 349)

Data as at:
06 Feb 2022

The x-axis is truncated at the length of Australia's vaccination program. Countries with intermittent reporting have had their doses per 100 imputed to Australia's current stage of rollout. Israel excluded as it is beyond scale of the graph

Cumulative doses administered (06 Feb): **51,152,055**

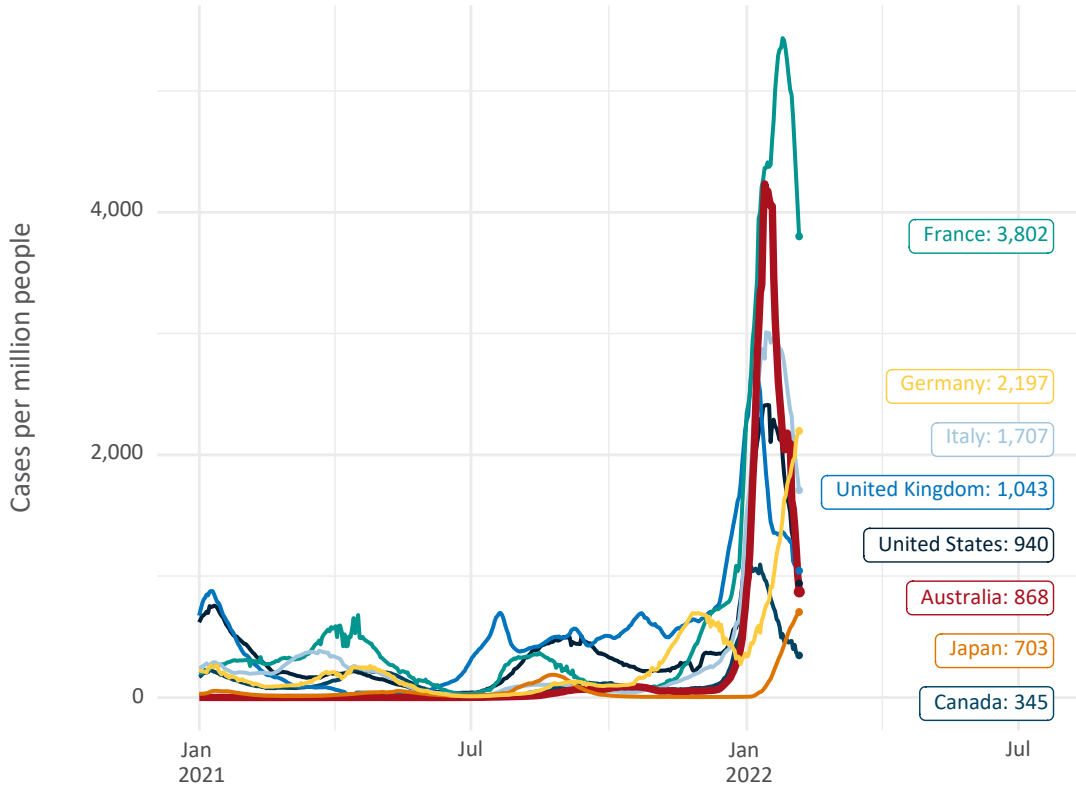


Note: From 15 September 2021, data for Australia includes all doses administered to people 12 and over. Prior to 15 September, data was for 16 and over
 Due to data revisions, Singapore has been removed from the chart
 Source: Department of Health (Australia), Our World in Data (international)
 Latest data: 06 February

Data as at:
06 Feb 2022

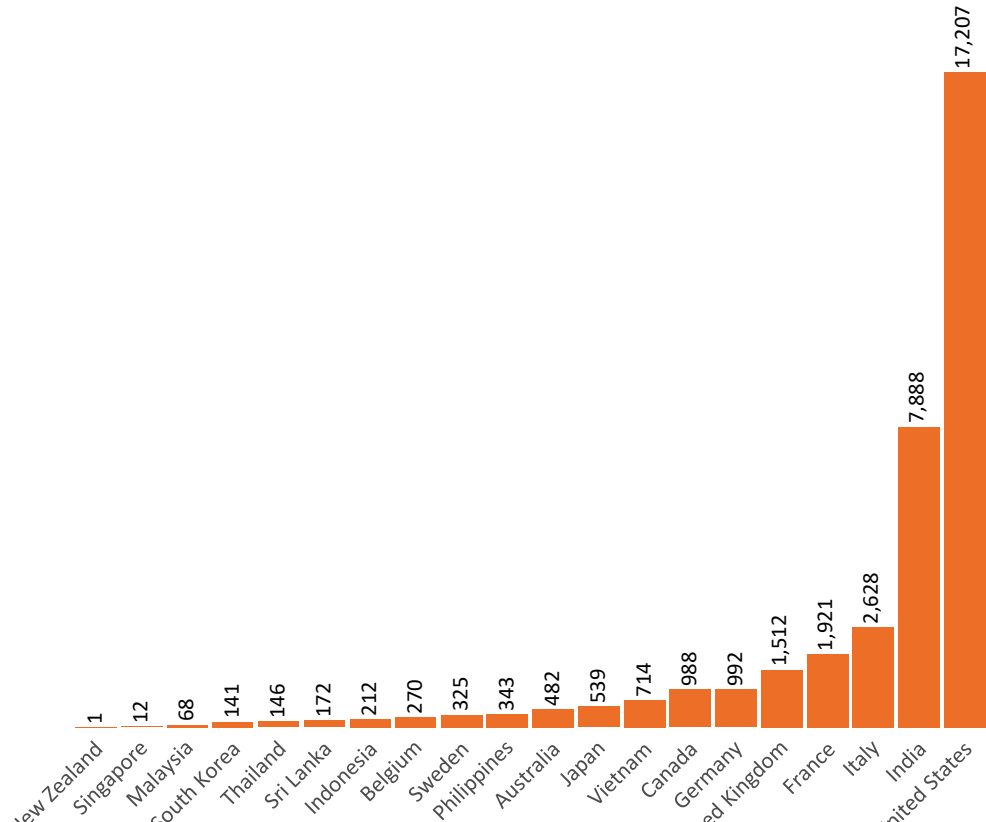
International data – COVID-19

New daily cases per million in 2021, Australia and G7 countries
Smoothed - 7 day average



Source: OWID
Data downloaded: 07 Feb 2022 08:15
Latest data: 05 Feb 2022

COVID-19 deaths in past 7 days - Australia and select countries

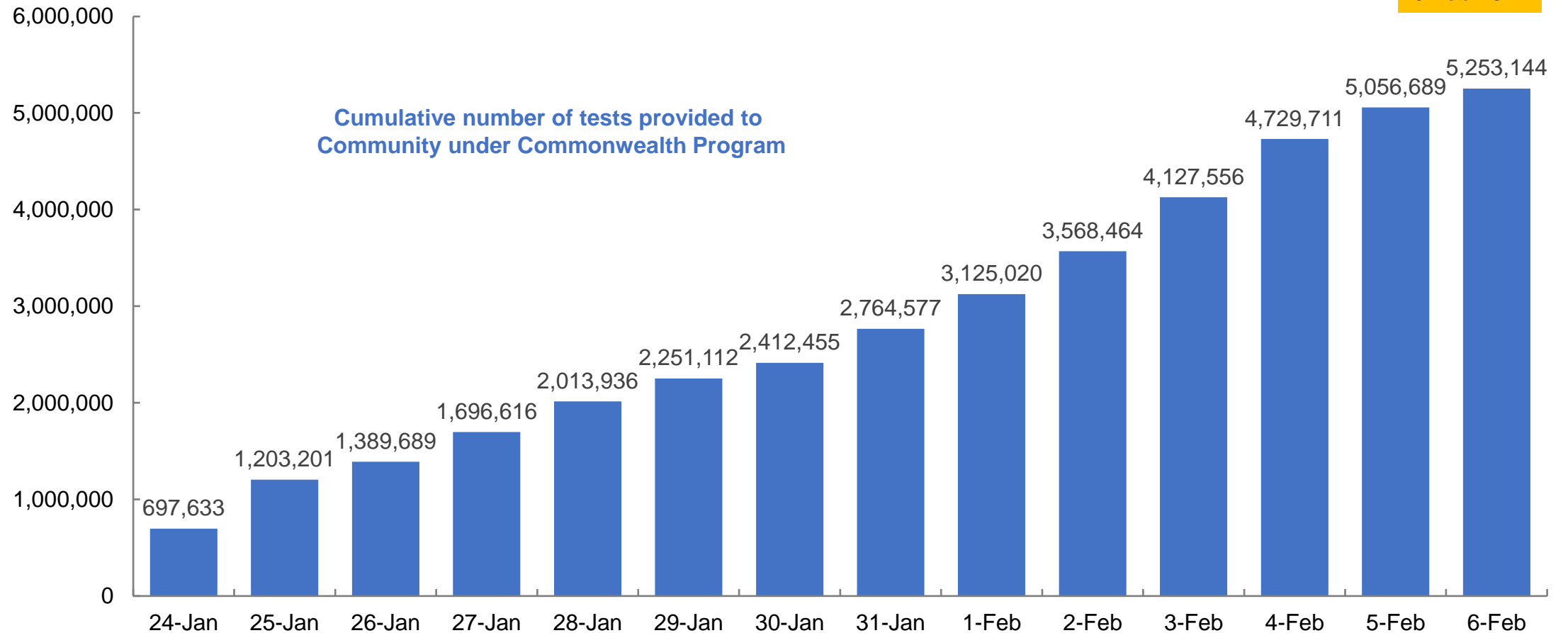


Source: OWID
Data downloaded: 07 Feb 2022 08:15
Latest data: 05 Feb 2022

Concessional rapid antigen test program


5,053 pharmacies have delivered over **5.2 million rapid antigen tests** to more than **1.2 Million eligible concession card holders** under the Government's concessional rapid antigen test program.

Data as at:
6 Feb 2022



Data as at midnight:
6 Feb 2022
Updated weekly

Pandemic Response Payments



2.38 million
People have received at least one COVID Disaster Payment (including ISP200)

\$13.52 billion
Paid Out as at 6 Feb 2022

6.72 million
Claims granted across three different payments




92%
of Claims Received Digitally



COVID Disaster Payment:	5.89 million claims received - 2.19 million individuals paid a total of \$12.59 billion.
\$200 Income Support Payment:	353,000 claims received - 183,000 individuals paid a total of \$268.9 million.
Pandemic Leave Disaster Payment:	850,000 claims received - 619,000 individuals paid a total of \$661.1 million.

COVID-19 DISASTER PAYMENTS



THREE PAYMENTS AVAILABLE

COVID Disaster Payment
assisting during a lockdown event in a Commonwealth hotspot.

Income Support Payment \$200
for income support recipients who lost at least 8 hours of work.

Pandemic Leave Disaster Payment
for those who have to self-isolate, quarantine or care.

For more information visit:
servicesaustralia.gov.au

Northern Territory
Lockdown (#3) from 16 Nov to 22 Nov
Claiming period ended 27 Dec

7,500 people have received at least one COVID Disaster Payment.

\$6.9m paid out as at 6 Feb 2022.

\$0 paid in initial payments in the week ending 6 Feb 2022.

Cumulative payments made by Territory since activation on 25 Aug 2021.



Date	Cumulative Payments
9 Jan	\$6.9m
16 Jan	\$6.9m
23 Jan	\$6.9m
30 Jan	\$6.9m
6 Feb	\$6.9m

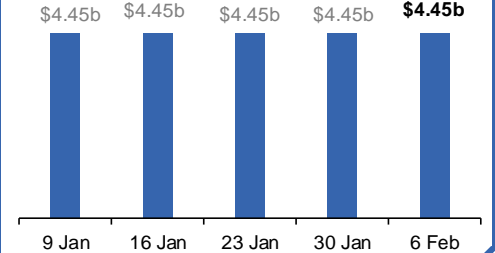
Victoria
Lockdown (#6) from 6 Aug to 28 Oct
Claiming period ended 9 Dec

745,000 people have received at least one COVID Disaster Payment.

\$4.45b paid out as at 6 Feb 2022.

\$7,000 paid in initial and reoccurring payments in the week ending 6 Feb 2022.

Cumulative payments made by State since activation on 8 Jun 2021.



Date	Cumulative Payments
9 Jan	\$4.45b
16 Jan	\$4.45b
23 Jan	\$4.45b
30 Jan	\$4.45b
6 Feb	\$4.45b

New South Wales
Lockdown from 24 Jun to 10 Oct
Claiming period ended 27 Nov

1.08m people have received at least one COVID Disaster Payment.

\$7.48b paid out as at 6 Feb 2022.

\$4,000 paid in initial and reoccurring payments in the week ending 6 Feb 2022.

Cumulative payments made by State since activation on 1 Jul 2021.



Date	Cumulative Payments
9 Jan	\$7.48b
16 Jan	\$7.48b
23 Jan	\$7.48b
30 Jan	\$7.48b
6 Feb	\$7.48b

Australian Capital Territory
Lockdown from 12 Aug to 14 Oct
Claiming period ended 25 Nov

65,000 people have received at least one COVID Disaster Payment.

\$344.7m paid out as at 6 Feb 2022.

\$1,000 paid in initial and reoccurring payments in the week ending 6 Feb 2022.

Cumulative payments made by Territory since activation on 20 Aug 2021.



Date	Cumulative Payments
9 Jan	\$344.7m
16 Jan	\$344.7m
23 Jan	\$344.7m
30 Jan	\$344.7m
6 Feb	\$344.7m

Data as at midnight:
6 Feb 2022
Updated weekly

Pandemic Response Payments (continued)

COVID-19 DISASTER PAYMENTS

Tasmania

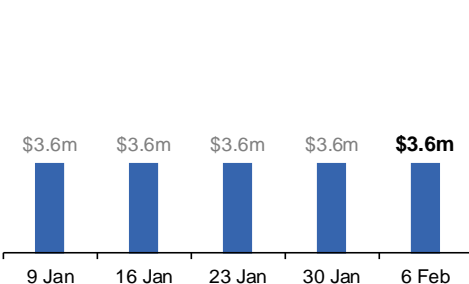
Lockdown from 15 Oct to 18 Oct
Claiming period ended 12 Nov

6,900 people have received at least one COVID Disaster Payment.

\$3.6m paid out as at 6 Feb 2022.

\$0 paid in initial and reoccurring payments in the week ending 6 Feb 2022.

Cumulative payments made by State since activation on 22 Oct 2021.



Queensland

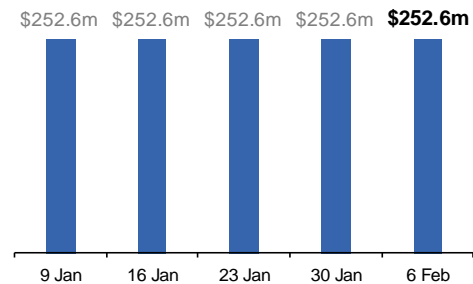
Lockdown from 31 Jul to 11 Aug
Claiming period ended 28 Aug

196,000 people have received at least one COVID Disaster Payment.

\$252.6m paid out as at 6 Feb 2022.

\$0 paid in initial and reoccurring payments in the week ending 6 Feb 2022.

Cumulative payments made by State since activation on 7 Aug 2021.



South Australia

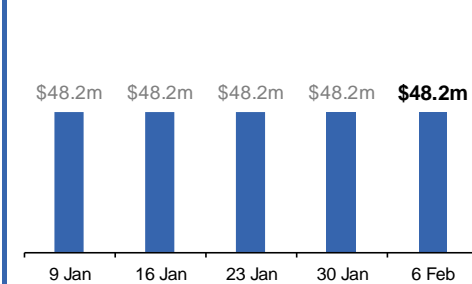
Lockdown from 21 to 27 Jul
Claiming period ended 17 Aug

86,000 people have received at least one COVID Disaster Payment.

\$48.2m paid out as at 6 Feb 2022.

\$0 paid in initial and reoccurring payments in the week ending 6 Feb 2022.

Cumulative payments made by State since activation on 28 Jul 2021.



Administration and Utilisation

Doses as at 06 January 2022

	Ordered	Available	Administered	Available minus Administered	Estimated Dose Utilisation %
	Up to 06/02/22	Delivered up to 30/01/22 including redistributions	Up to 06/02/22		(see note)
NSW	6,063,772	6,039,388	4,860,041	1,179,347	90%
VIC	6,949,654	6,791,954	5,619,746	1,172,208	93%
QLD	4,795,032	4,672,350	3,628,016	1,044,334	88%
WA	2,581,728	2,479,818	2,200,016	279,802	99%
SA	2,133,590	2,041,260	1,631,972	409,288	90%
TAS	622,440	610,740	565,156	45,584	Fully utilised
NT	376,454	349,296	290,951	58,345	93%
ACT	612,376	580,566	646,525	-	Fully utilised
Jurisdiction delivered total	24,135,046	23,565,372	19,442,423	4,122,949	93%
Commonwealth Aged Care & Disability	1,313,170	1,289,028	1,236,038	52,990	N/A
Commonwealth Primary Care & Other	44,192,056	42,542,954	30,473,594	12,069,360	82%
Total	69,640,272	67,397,354	51,152,055	16,245,299	86%

About this data

- Ordered – Total doses delivered to sites. Based on logistics provider data. This figure includes doses allocated for administration in the coming week.
- Available – total doses that could have been administered to date, less doses re-distributed from States & Territories to Primary Care or Aged Care & Disability (i.e. does not include those deliveries recently received, and intended for use in the coming week).
- Administered – Doses administered as at 06 February 2022.
- The dose utilisation is calculated based on the total doses administered and a small % wastage in line with international standards in relation to total available doses.
- For Aged Care & Disability, the doses available for administration is for the full period (up to 06 February 2022).
- Aged Care & Disability utilisation is not provided as the in-reach rollout is demand-based, with vaccines ordered based on resident numbers.