



Australian Government
Operation COVID Shield

COVID-19 Vaccine Roll-out

06 February 2022

Data as at:
05 Feb 2022

Total vaccine doses



51,081,337 total vaccine
doses administered nationally as at 05 February
+128,581 recorded in the last 24 hours



19,740,660

people have had at least one
dose

>95%

of people over the age of 16
have had at least one dose



19,317,584

people are fully vaccinated

93.7%

of people over the age of 16 are
fully vaccinated



8,941,520

people over the age of 16
who have received more
than two doses

NSW
16,139,464
(+25,760 daily
increase)

VIC
13,473,301
(+41,491 daily
increase)

QLD
9,812,528
(+19,303 daily
increase)

WA
5,255,505
(+23,366 daily
increase)

TAS
1,129,342
(+2,821 daily
increase)

SA
3,506,704
(+10,231 daily
increase)

ACT
1,268,945
(+4,723 daily
increase)

NT
495,548
(+886 daily
increase)

*Administration state breakdown indicates state in which a vaccine was administered

**Overall dose count includes instances of more than two doses per person in a small number of cases.

Source: Australian Immunisation Register

Booster Vaccinations

Australia's COVID-19
Vaccine Roadmap

Data as at:
05 Feb 2022



8,941,520 total people over the age of 16 years old
who have received more than two doses nationally

+103,003 people who have received more than two doses
nationally in the last 24 hours

NSW
2,877,894
(22,728 daily
increase)

VIC
2,389,536
(35,029 daily
increase)

QLD
1,606,504
(14,237 daily
increase)

WA
911,939
(15,900 daily
increase)

TAS
193,824
(2,226 daily
increase)

SA
642,872
(7,784 daily
increase)

ACT
190,690
(3,321 daily
increase)

NT
71,031
(665 daily
increase)

57,230

doses administered to persons
residing in other territories or with
missing residential information

Source: Australian Immunisation Register

Vaccinations by residential location

Australia's COVID-19 Vaccine Roadmap

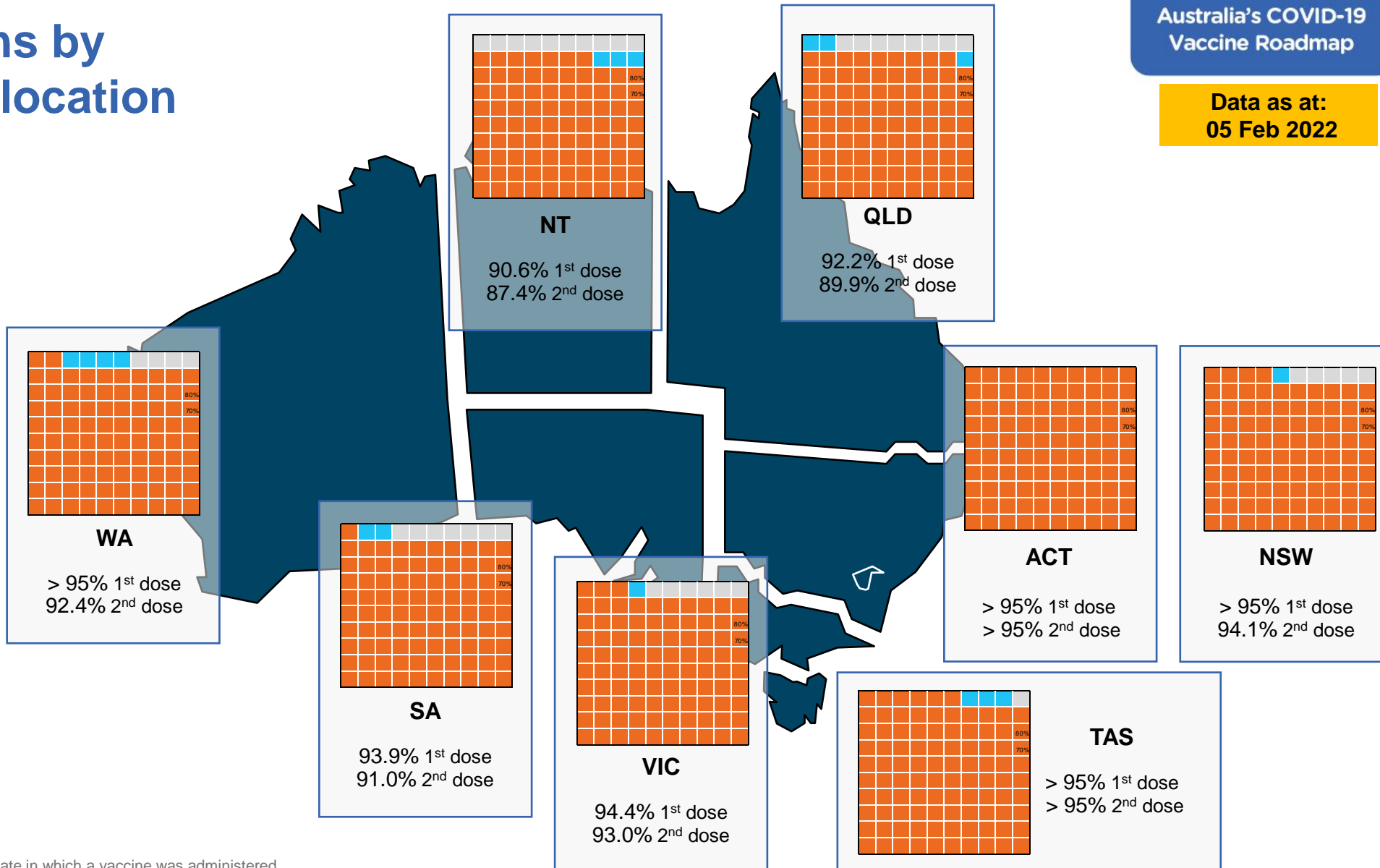
Data as at:
05 Feb 2022

First doses

Age	Today	4 weeks ago	8 weeks ago
16+	>95%	94.9%	93.7%
50+	>95%	>95%	>95%
70+	>95%	>95%	>95%

Fully vaccinated

Age	Today	4 weeks ago	8 weeks ago
16+	93.7%	92.3%	89.8%
50+	>95%	>95%	>95%
70+	>95%	>95%	>95%



*Residential state may differ from the state in which a vaccine was administered

Commonwealth and Jurisdiction vaccine doses administered

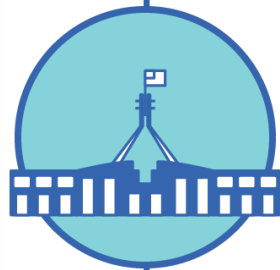
Data as at:
05 Feb 2022



51,081,337 total vaccine
doses administered nationally as at 05 February
+ 128,581 recorded in the last 24 hours



19,408,820
doses administered by state
and territory facilities
+ 45,129
recorded in the last 24 hours



31,672,517
doses administered by
commonwealth facilities
+ 83,452
recorded in the last 24 hours
30,437,003 total vaccine doses
administered in primary care settings
1,235,514 total vaccine doses
administered in aged care and disability
settings

NSW	Jurisdictions	Commonwealth
Cumulative	4,859,625	11,279,839
Daily increase	905	24,855

VIC	Jurisdictions	Commonwealth
Cumulative	5,607,147	7,866,154
Daily increase	17,933	23,558

QLD	Jurisdictions	Commonwealth
Cumulative	3,621,700	6,190,828
Daily increase	7,024	12,279

WA	Jurisdictions	Commonwealth
Cumulative	2,193,534	3,061,971
Daily increase	8,732	14,634

TAS	Jurisdictions	Commonwealth
Cumulative	564,051	565,291
Daily increase	935	1,886

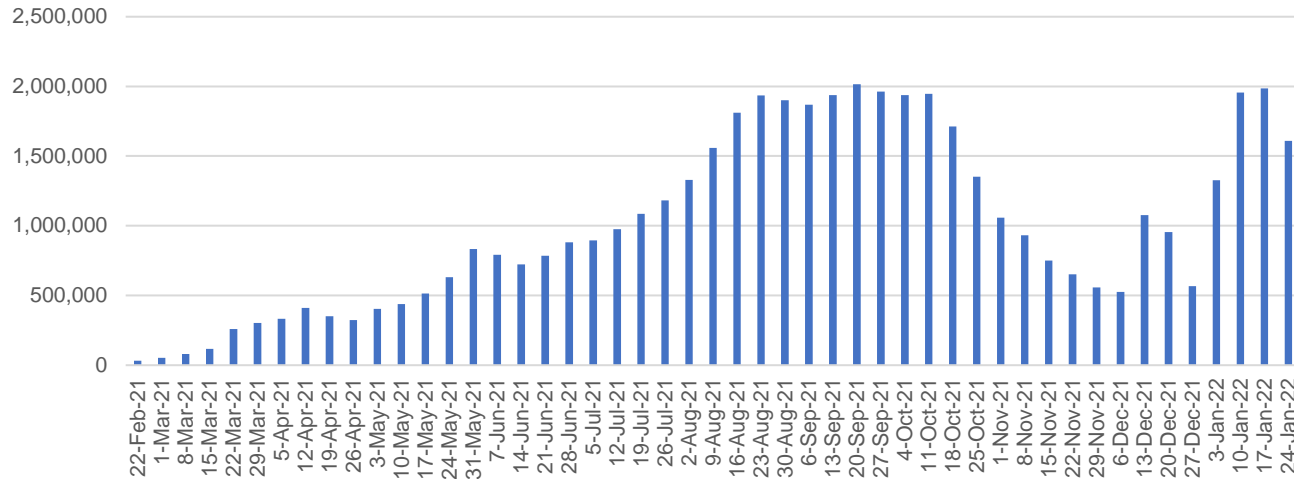
SA	Jurisdictions	Commonwealth
Cumulative	1,627,787	1,878,917
Daily increase	5,907	4,324

ACT	Jurisdictions	Commonwealth
Cumulative	644,565	624,380
Daily increase	2,884	1,839

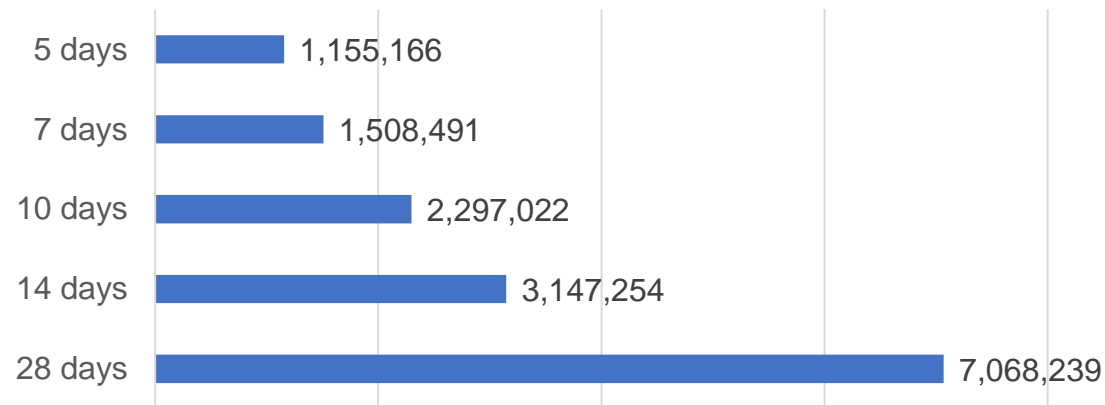
NT	Jurisdictions	Commonwealth
Cumulative	290,411	205,137
Daily increase	809	77

Vaccine milestone charts

Doses Administered by Week



Doses Reported

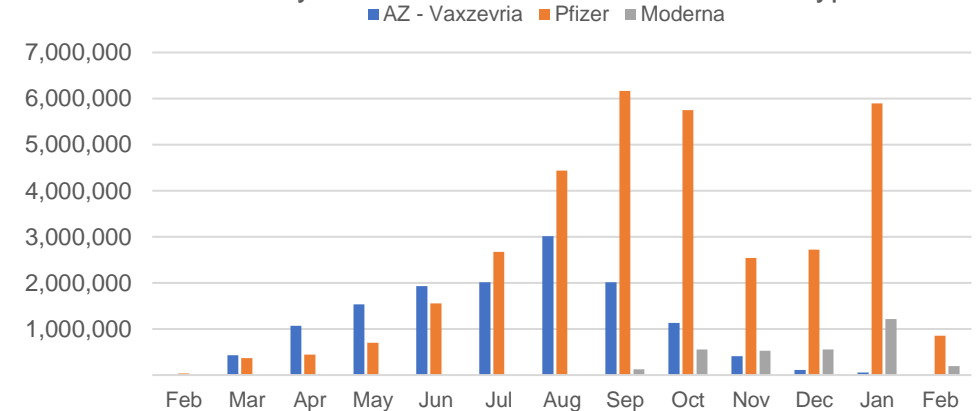


*Sourced from the Australian Immunisation Register.

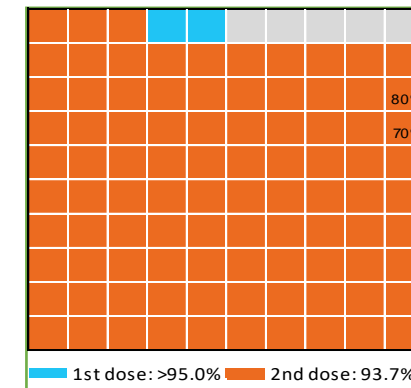
Data as at:
05 Feb 2022

Australia's COVID-19
Vaccine Roadmap

Doses by administration month and vaccine type



Eligible population percentage coverage



*Each square represents 1% of the national population.
Squares are filled as milestones are achieved.

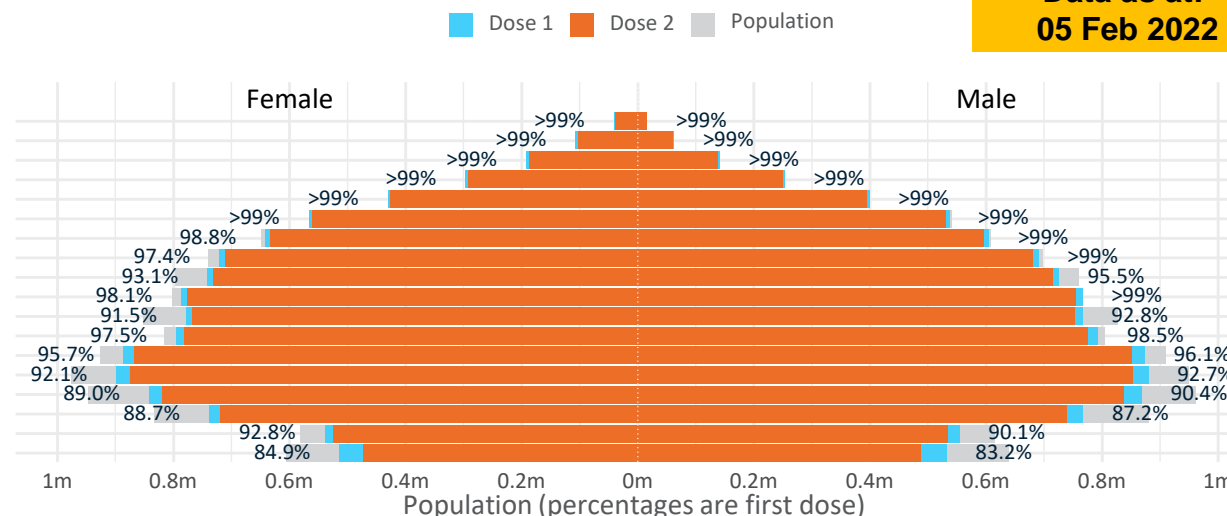
Doses by age and sex

First and second doses by age and sex

Australia's COVID-19
Vaccine Roadmap

Data as at:
05 Feb 2022

Age	Dose 1	Dose 2
95+	57,104 (>99%)	53,440 (>99%)
90-94	169,642 (>99%)	162,968 (>99%)
85-89	333,457 (>99%)	324,552 (>99%)
80-84	550,563 (>99%)	540,923 (>99%)
75-79	830,431 (>99%)	819,507 (>99%)
70-74	1,104,293 (>99%)	1,090,682 (98.7%)
65-69	1,248,075 (>99%)	1,231,362 (97.9%)
60-64	1,412,592 (98.3%)	1,393,121 (97.0%)
55-59	1,467,914 (94.4%)	1,447,580 (93.1%)
50-54	1,553,400 (>99%)	1,530,856 (97.8%)
45-49	1,546,196 (92.2%)	1,520,771 (90.7%)
40-44	1,590,820 (98.2%)	1,559,213 (96.2%)
35-39	1,764,032 (96.1%)	1,722,475 (93.9%)
30-34	1,785,540 (92.8%)	1,733,567 (90.1%)
25-29	1,720,566 (90.2%)	1,663,804 (87.3%)
20-24	1,511,873 (88.3%)	1,463,942 (85.5%)
16-19	1,094,162 (91.5%)	1,058,821 (88.5%)
12-15	1,045,713 (84.1%)	960,740 (77.2%)

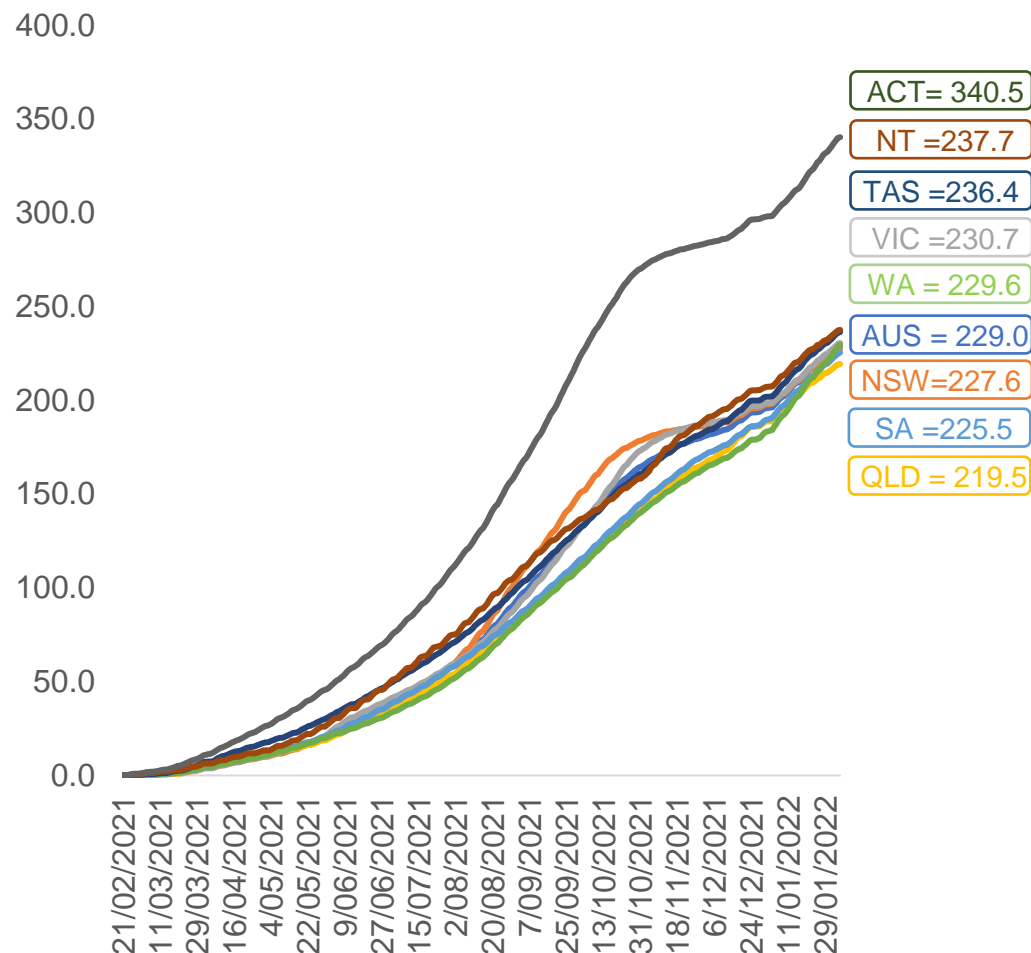


	AUS	ACT	NSW	NT	QLD	SA	TAS	VIC	WA
16 and over - dose 1	19,740,660	349,348	6,270,082	172,678	3,790,910	1,352,271	438,415	5,102,238	2,037,916
16 and over - dose 2	19,317,584	344,357	6,177,100	166,480	3,699,146	1,311,346	425,555	5,030,707	1,954,984
16 and over - population	20,619,959*	344,037	6,565,651	190,571	4,112,707	1,440,400	440,172	5,407,574	2,114,978
16 and over % with dose 1	95.74%	>99%	95.50%	90.61%	92.18%	93.88%	>99%	94.35%	96.36%
16 and over % with dose 2	93.68%	>99%	94.08%	87.36%	89.94%	91.04%	96.68%	93.03%	92.44%
5 to 11 - dose 1	1,017,450	28,949	308,625	10,908	187,632	72,056	25,452	284,054	93,886
5 to 11 - dose 2	4,194	104	1,745	44	762	109	26	1,233	147
5 to 11 - population	2,276,638	39,789	716,460	24,750	478,731	148,816	45,033	578,499	244,154
5 to 11 % with dose 1	44.69%	72.76%	43.08%	44.07%	39.19%	48.42%	56.52%	49.10%	38.45%
5 to 11 % with dose 2	0.18%	0.26%	0.24%	0.18%	0.16%	0.07%	0.06%	0.21%	0.06%
12 to 15 - dose 1	1,045,713	20,010	325,649	10,800	206,312	67,511	22,611	275,516	108,075
12 to 15 - dose 2	960,740	19,146	306,999	9,412	185,587	61,074	20,326	261,041	89,435
12 to 15 - population	1,243,990	19,693	390,330	13,060	270,146	82,747	26,308	308,611	132,869
12 to 15 % with dose 1	84.06%	>99%	83.43%	82.70%	76.37%	81.59%	85.95%	89.28%	81.34%
12 to 15 % with dose 2	77.23%	97.22%	78.65%	72.07%	68.70%	73.81%	77.26%	84.59%	67.31%

*National population will not equal sum of listed jurisdictions due to a small number of people counted in national population residing in some 'other' territories. Sum of state doses will not add to national total as some records are unable to be geocoded to a State or Territory.
Doses sourced from Australian Immunisation Register, population from ABS ERP June 2020

Vaccinations by location

Cumulative total doses administered vs eligible state populations*

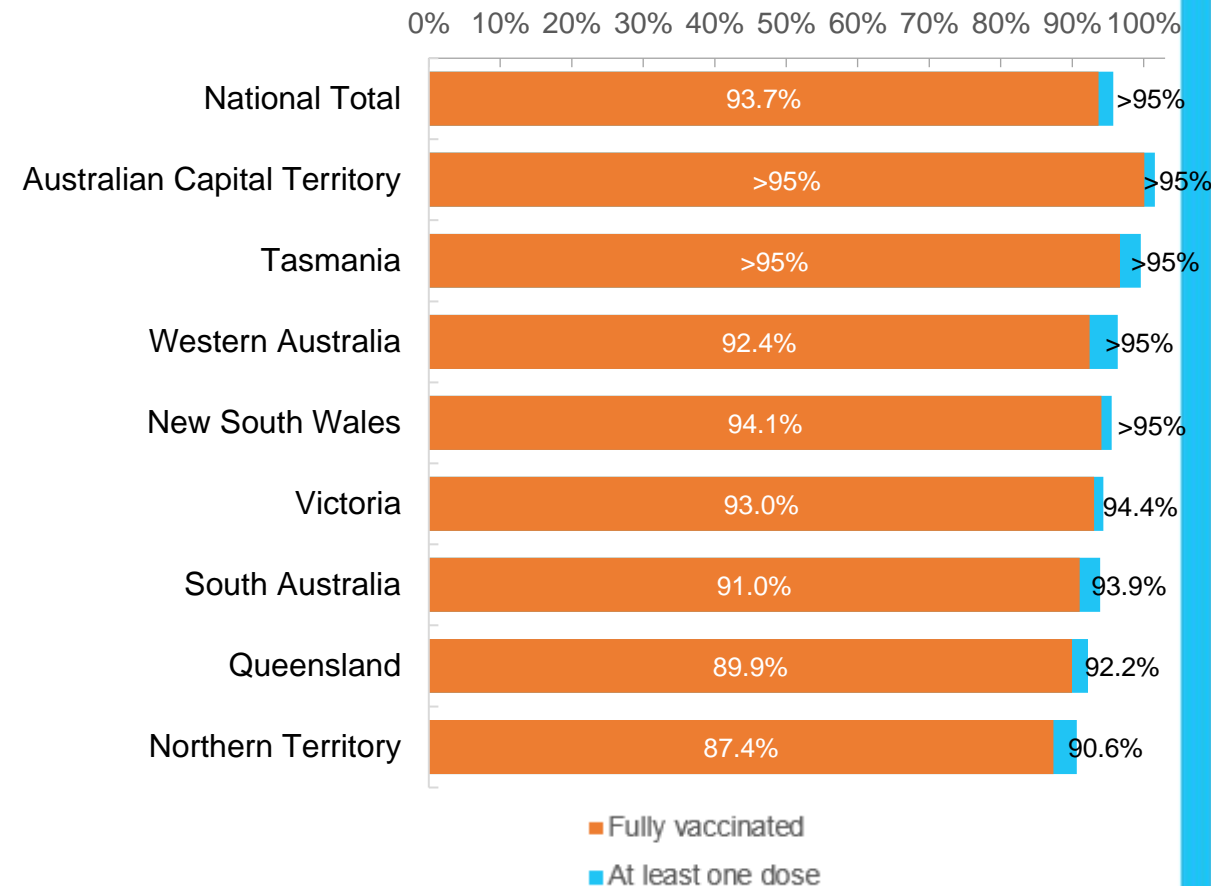


*Not an indication of percentage vaccinated, numbers will exceed 100 due to multiple doses required per person of the population. All doses are included for those aged 12 and above, and are based on vaccination provider location.

Data as at:
05 Feb 2022

Australia's COVID-19
Vaccine Roadmap

First and Second Doses by residential location



Aboriginal and Torres Strait Islander peoples

Number of people vaccinated

Data as at:
01 Feb 2022
Updated weekly

Australia's COVID-19
Vaccine Roadmap



426,625

people over the age of 16
have had at least one dose

81.8%

of people over the age of 16
have had at least one dose



395,442

people over the age of 16
are fully vaccinated

75.8%

of people over the age of 16 are
fully vaccinated



**46,238
(65.0%)**

people aged 12-15 years
have had at least one dose

174 Aboriginal community controlled health services (ACCHS)

0#	50	27	42	12	3	21	19
ACT	NSW	NT	QLD	SA	TAS	VIC	WA

Medicare Address State ^{##}	Individuals Dose 1	Individuals Dose 1 %	Individuals Dose 2	Individuals Dose 2 %
Australian Capital Territory	4,885	90.9%	4,745	88.3%
New South Wales	135,563	86.4%	131,880	84.1%
Northern Territory	41,250	87.4%	37,575	79.6%
Queensland	112,403	79.2%	103,321	72.8%
South Australia	19,356	77.3%	17,307	69.1%
Tasmania	14,361	87.3%	13,624	82.8%
Victoria	35,241	89.0%	34,245	86.4%
Western Australia	47,736	75.6%	39,514	62.6%
Unknown/Other Territories	15,830	61.2%	13,231	51.2%
Totals	426,625	81.8%	395,442	75.8%

Source: Australian Immunisation Register

*Identifying as Aboriginal and Torres Strait Islander is optional and the estimated population may be under reported.

**Includes all Aboriginal and Torres Strait Islander peoples who have received a vaccination, not limited to those administered in an ACCHS setting

#ACCHS in the ACT are currently operating as a Commonwealth Vaccine Clinics so not included to avoid double counting

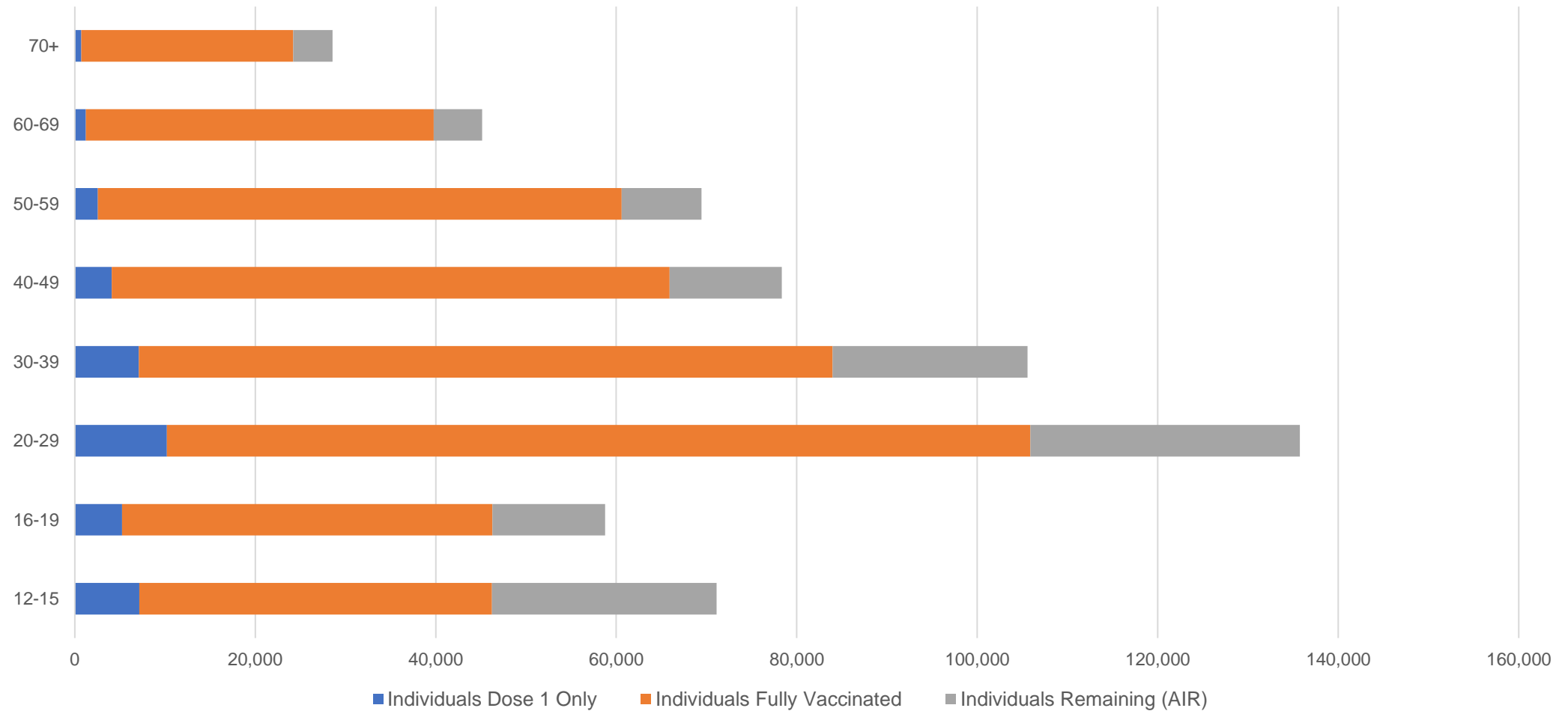
##The above table includes all identified Aboriginal and Torres Strait Islander people who are aged 16 and above by their state of residence.

Aboriginal and Torres Strait Islander peoples

Number of people vaccinated by age

Data as at:
01 Feb 2022
Updated weekly

Australia's COVID-19
Vaccine Roadmap



Source: Australian Immunisation Register

Commonwealth primary care

Data as at:
05 Feb 2022

Australia's COVID-19
Vaccine Roadmap



Primary care vaccine administration sites

5,738	128	174	3,513
GPs	CVCs	ACCHS	Pharmacies



30,437,003 total vaccine doses administered
primary care settings as at 05 February
+ 82,430 recorded in the last 24 hours

Primary care vaccinations by provider type

	Doses administered	Daily increase	7 day increase
General Practice* includes other Commonwealth	25,239,059	55,757	760,643
Pharmacy	5,197,944	26,673	367,519

NSW
10,746,027
(+24,729 daily increase)

VIC
7,574,290
(+22,596 daily increase)

QLD
5,919,856
(+11,316 daily increase)

WA
2,945,239
(+14,167 daily increase)

TAS
547,272
(+1,875 daily increase)

SA
1,803,063
(+4,094 daily increase)

ACT
484,595
(+1,661 daily increase)

NT
184,367
(+71 daily increase)

232,294

doses administered to persons
residing in other territories or with
missing residential information

*General practice includes Commonwealth Vaccination Clinics, Aboriginal Community Health Centres, Royal Flying Doctor Service and other Commonwealth vaccination facilities

Source: Australian Immunisation Register

Data as at:
05 Feb 2022

Commonwealth aged care and disability doses administered



1,235,514 (+ 1,022 last 24 hours)

Total vaccine doses administered in aged care and disability facilities as at 05 February

Number of doses administered as part of the Commonwealth aged and disability care rollout

NSW
551,543
(+110 daily increase)

VIC
234,462
(+354 daily increase)

QLD
194,644
(+38 daily increase)

WA
96,325
(+299 daily increase)

TAS
21,929
(+15 daily increase)

SA
82,633
(+128 daily increase)

ACT
16,101
(+15 daily increase)

NT
7,007
(+0 daily increase)

30,870

doses administered to persons
residing in other territories or with
missing residential information

*Sourced from the Australian Immunisation Register. Includes all persons vaccinated at participating residential aged care, disability and related industry settings.

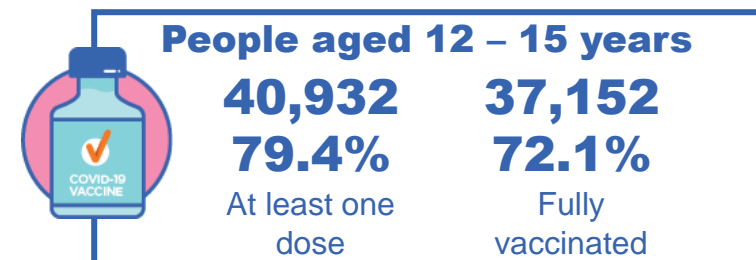
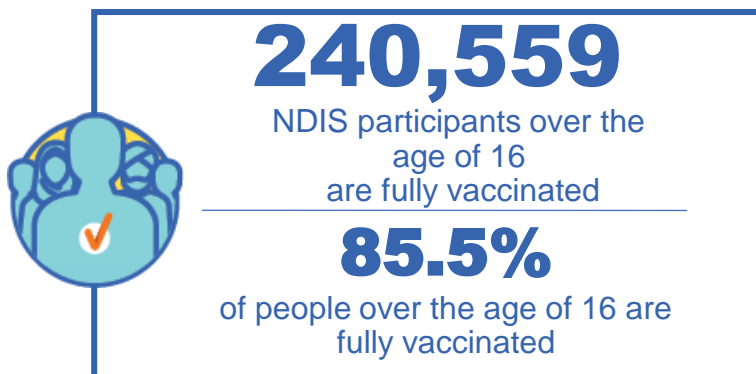
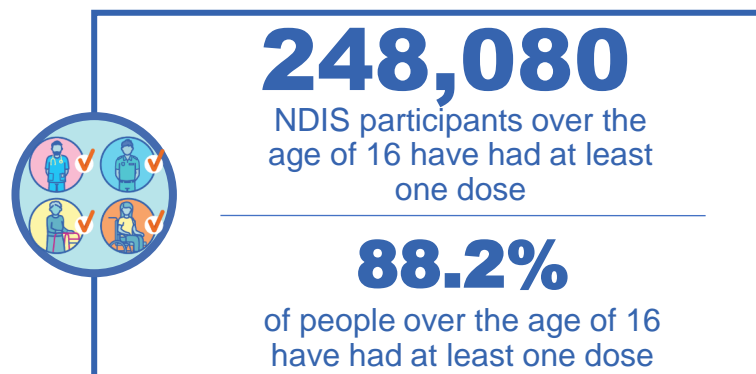
**State level breakdown indicates the residential location and may not align to the state in which the vaccination occurred.

Source: Australian Immunisation Register

National Disability Insurance Scheme (NDIS) reported vaccinations

Data as at:
03 February 2022
Updated weekly

Australia's COVID-19
Vaccine Roadmap



NDIS participant vaccinations

	People aged 16+ with at least one dose	People aged 16+ fully vaccinated	% People aged 16+ with at least one dose	% People aged 16+ fully vaccinated
ACT	4,762	4,685	90.6%	89.1%
NSW	77,192	75,790	88.9%	87.3%
NT	2,144	2,027	79.3%	74.9%
QLD	48,483	46,777	87.2%	84.1%
SA	19,860	19,227	85.7%	82.0%
TAS	6,181	5,916	87.8%	84.0%
VIC	66,432	65,066	89.6%	87.7%
WA	22,788	20,269	86.7%	80.2%
National	248,080	240,559	88.2%	85.5%

Source: Linkage between National Disability Insurance Agency data and the Australian Immunisation Register. Total NDIS participant numbers as at 17th October. Australian Immunisation Register data as at 02 February. Includes all participants regardless of residence type.

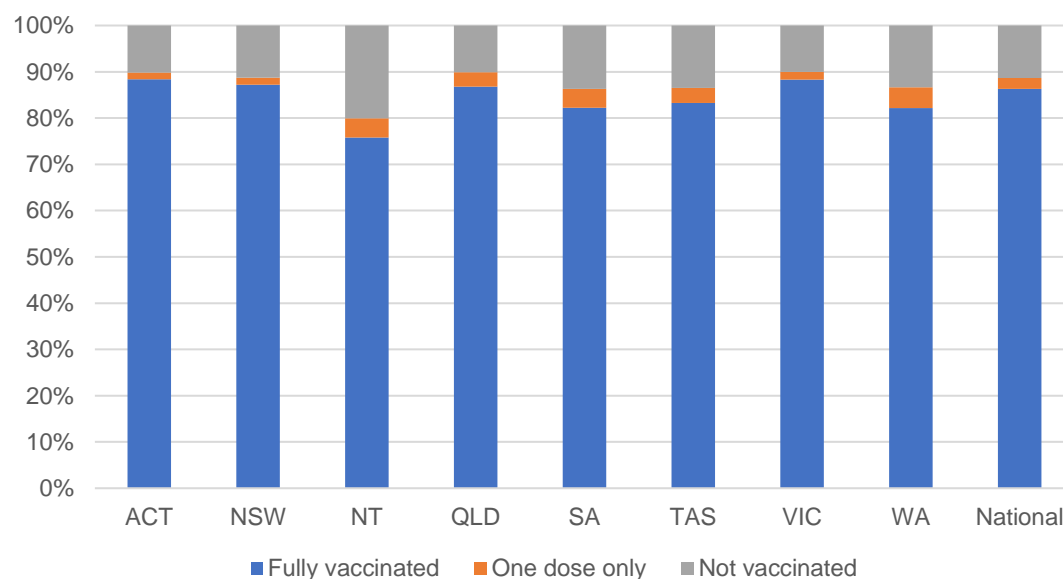
National Disability Insurance Scheme (NDIS) reported vaccinations

Data as at:
03 February 2022
Updated Weekly

Australia's COVID-19
Vaccine Roadmap

NATIONAL	Total people with at least one dose	People fully vaccinated	Total number of individuals in cohort	% People with at least one dose	% People fully vaccinated
NDIS participants living in disability accommodation	20,267	19,748	22,800	88.90%	86.60%

NDIS participants in disability and aged care accommodation



Source: Linkage between National Disability Insurance Agency data and the Australian Immunisation Register. Includes participants residing in disability accommodation only.
Source: Total NDIS participant numbers as at 17th October. Participant data as at 02 February. Australian Immunisation Register data as at 02 February. Worker data as at 27th January.

NDIS workforce vaccinations

	NDIS workers with at least one dose	NDIS workers fully vaccinated	% NDIS workers with at least one dose	% NDIS workers fully vaccinated
NSW	110,391	109,861	96.9%	96.4%
VIC	104,674	104,202	98.1%	97.7%
QLD	65,088	64,189	96.4%	95.1%
WA	31,259	28,812	97.8%	90.1%
SA	33,838	32,784	97.4%	94.3%
TAS	10,180	10,015	99.5%	97.9%
ACT	3,413	3,405	99.4%	99.2%
NT	3,052	3,008	99.3%	97.9%
TOTAL	361,895	356,276	97.4%	95.9%

Source: the NDIS Commission has established a requirement for registered NDIS providers who provide intensive disability support services to report on the vaccination status of workers they employ, or otherwise engage, to deliver NDIS-funded supports and services, and who are required to be vaccinated in accordance with in-force state and territory public health orders. The statistics reflect data reported to the NDIS Commission by registered NDIS providers and should be considered indicative and subject to change

Note: Some registered NDIS providers are yet to report on the vaccination status of their workforce. The NDIS Commission is working with those providers around reporting requirements.

Remaining workers not included include those exempt from vaccination requirements, workers whose vaccination status is not yet verified by the provider (such as workers on leave) and provider reporting anomalies.

Residential aged care vaccination rollout

Data as at:
03 Feb 2022

Residential aged care facilities status

100%

Commonwealth facilities visited (2,590 planned sites)

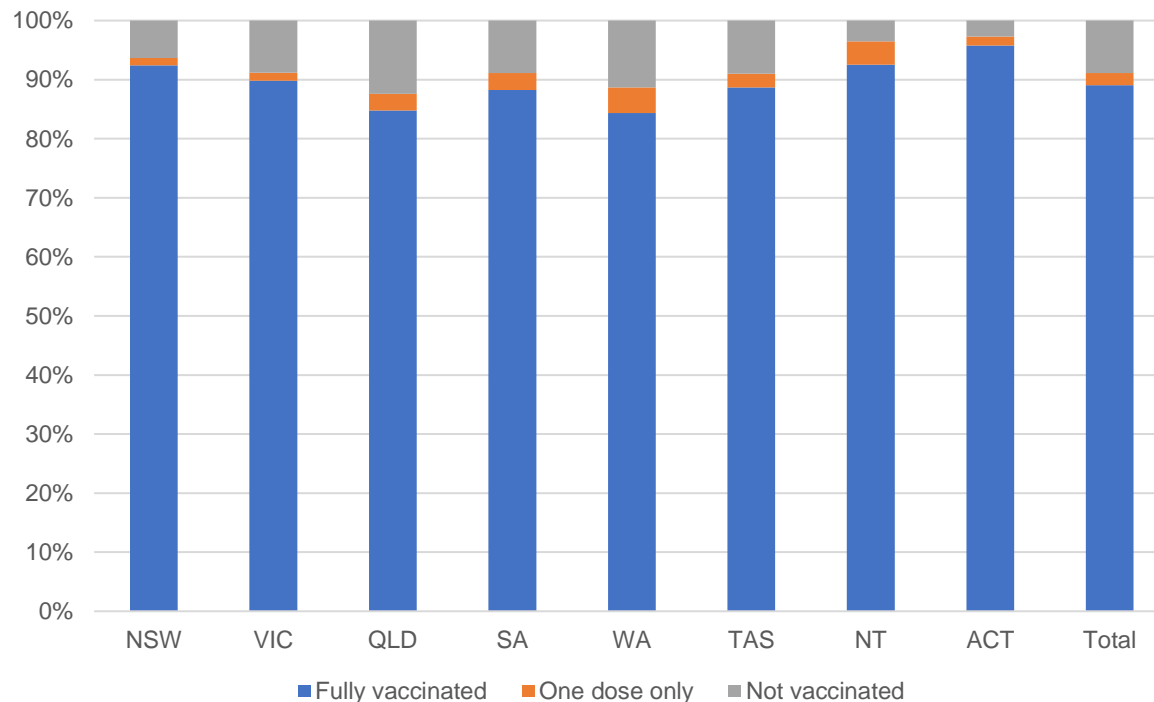
169,579

People fully vaccinated

173,484

People with at least one dose

Aged care resident vaccinations



Aged care worker vaccinations

Jurisdictions	Total workers with at least one dose	Workers fully vaccinated	% Workers with at least one dose	% Workers fully vaccinated
NSW	78,603	78,568	98.8%	98.8%
VIC	70,455	70,453	98.9%	98.9%
QLD	48,752	48,739	99.3%	99.3%
SA	27,005	26,962	98.6%	98.4%
WA	23,930	23,768	99.0%	98.3%
TAS	7,651	7,640	100.0%	99.9%
NT	862	862	100.0%	100.0%
ACT	2,944	2,944	100.0%	100.0%
Total	260,202	259,936	99.0%	98.9%

Source: My Aged Care Portal vaccination progress

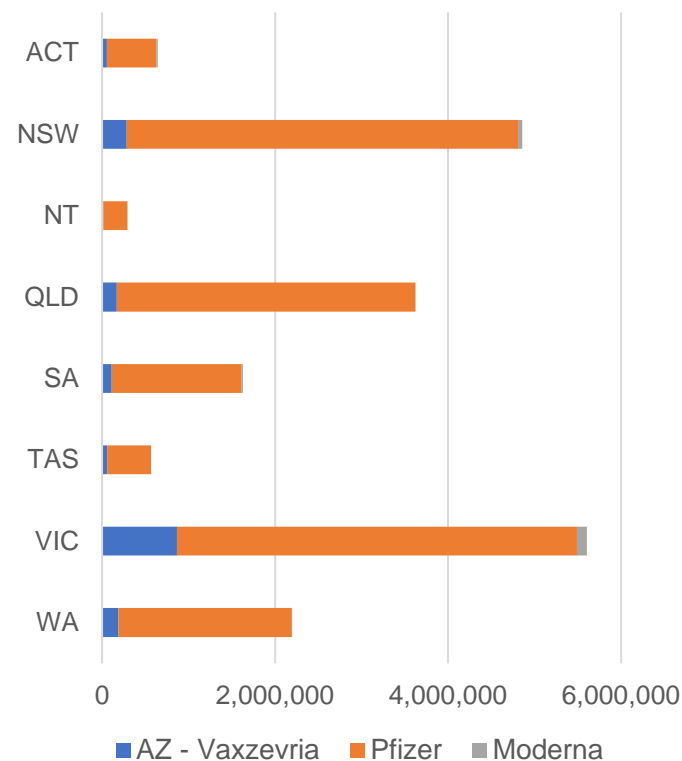
*Status updates are provided by facilities at least once per week. Reporting is updated Monday to Friday to encompass different facility updates being made on different days.

Data is sourced directly from Aged Care Service Providers and is not drawn or closely aligned with data from AIR due to inconsistencies and potential lags in uploading of records.

Data as at:
05 Feb 2022

Jurisdiction administered

Total vaccine doses administered in State and Territory clinics as at 05 February



19,408,820 total vaccine doses administered
in State and Territory clinics as at 05 February
+ **45,129** recorded in the last 24 hours
+ **365,188** recorded in the last 7 days

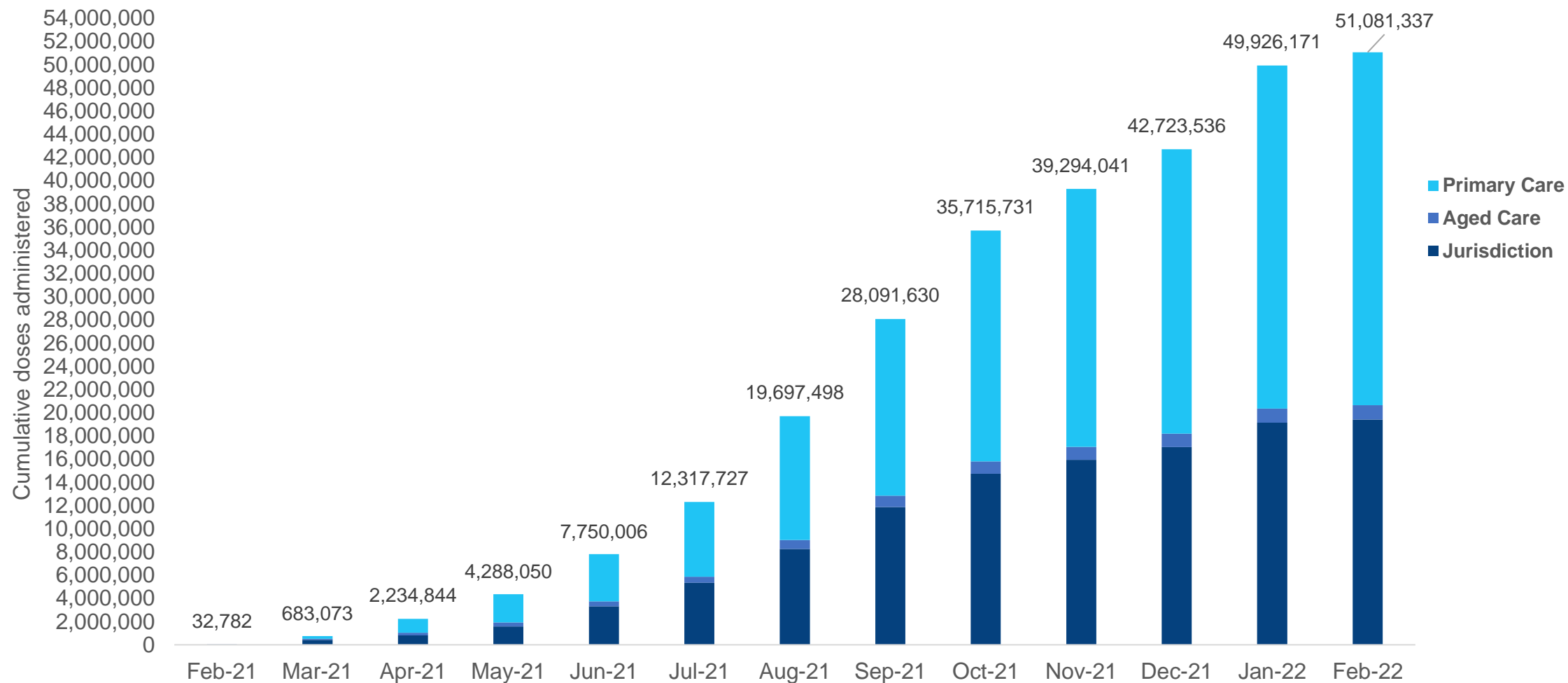


*Sourced from the Australian Immunisation Register. Numbers are calculated as difference in daily cumulative reported numbers to allow for historical corrections.

Source: Australian Immunisation Register

Cumulative doses administered by channel

Data as at:
05 Feb 2022



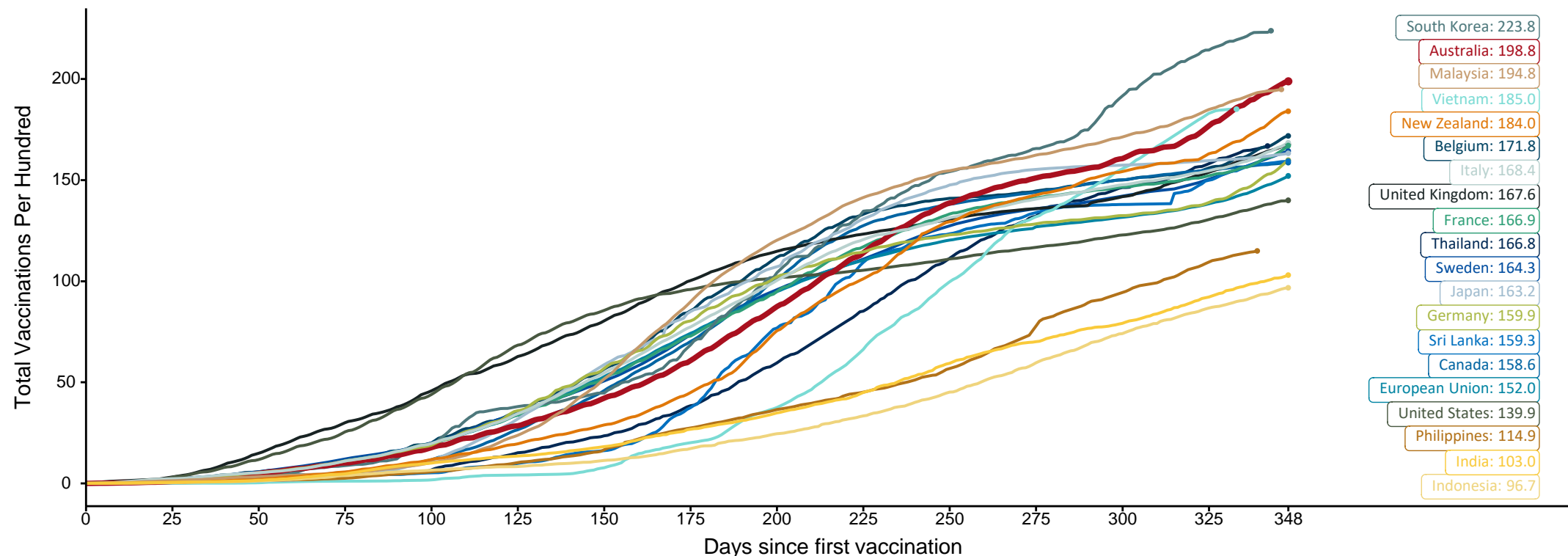
Source: Australian Immunisation Register

Doses at equivalent stages of rollout (Day 348)

Data as at:
05 Feb 2022

The x-axis is truncated at the length of Australia's vaccination program. Countries with intermittent reporting have had their doses per 100 imputed to Australia's current stage of rollout. Israel excluded as it is beyond scale of the graph

Cumulative doses administered (05 Feb): **51,081,337**

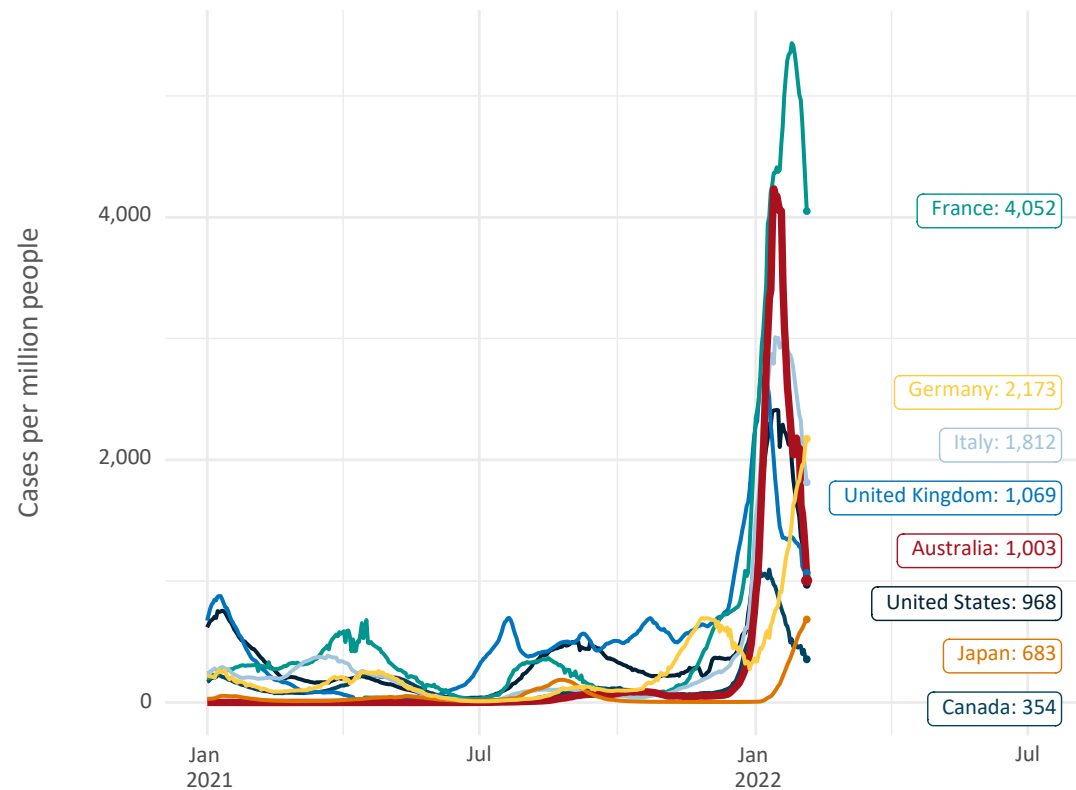


Note: From 15 September 2021, data for Australia includes all doses administered to people 12 and over. Prior to 15 September, data was for 16 and over
 Due to data revisions, Singapore has been removed from the chart
 Source: Department of Health (Australia), Our World in Data (international)
 Latest data: 05 February

Data as at:
05 Feb 2022

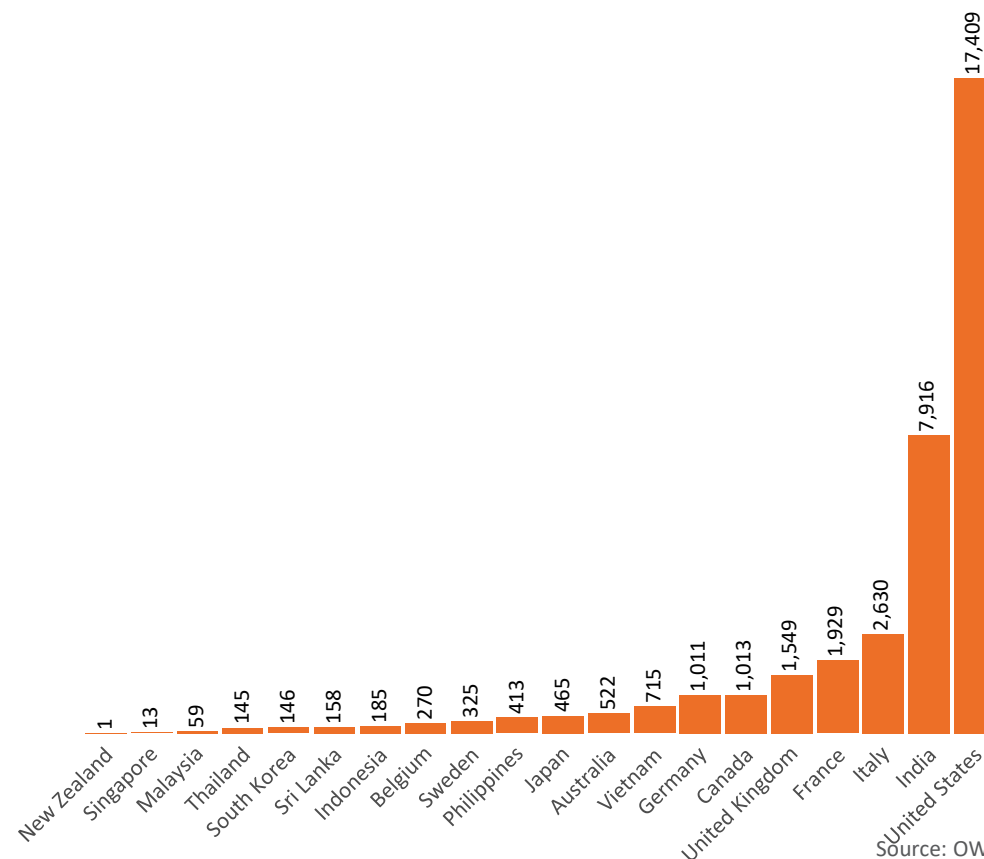
International data – COVID-19

New daily cases per million in 2021, Australia and G7 countries
Smoothed - 7 day average



Source: OWID
Data downloaded: 06 Feb 2022 08:50
Latest data: 04 Feb 2022

COVID-19 deaths in past 7 days - Australia and select countries

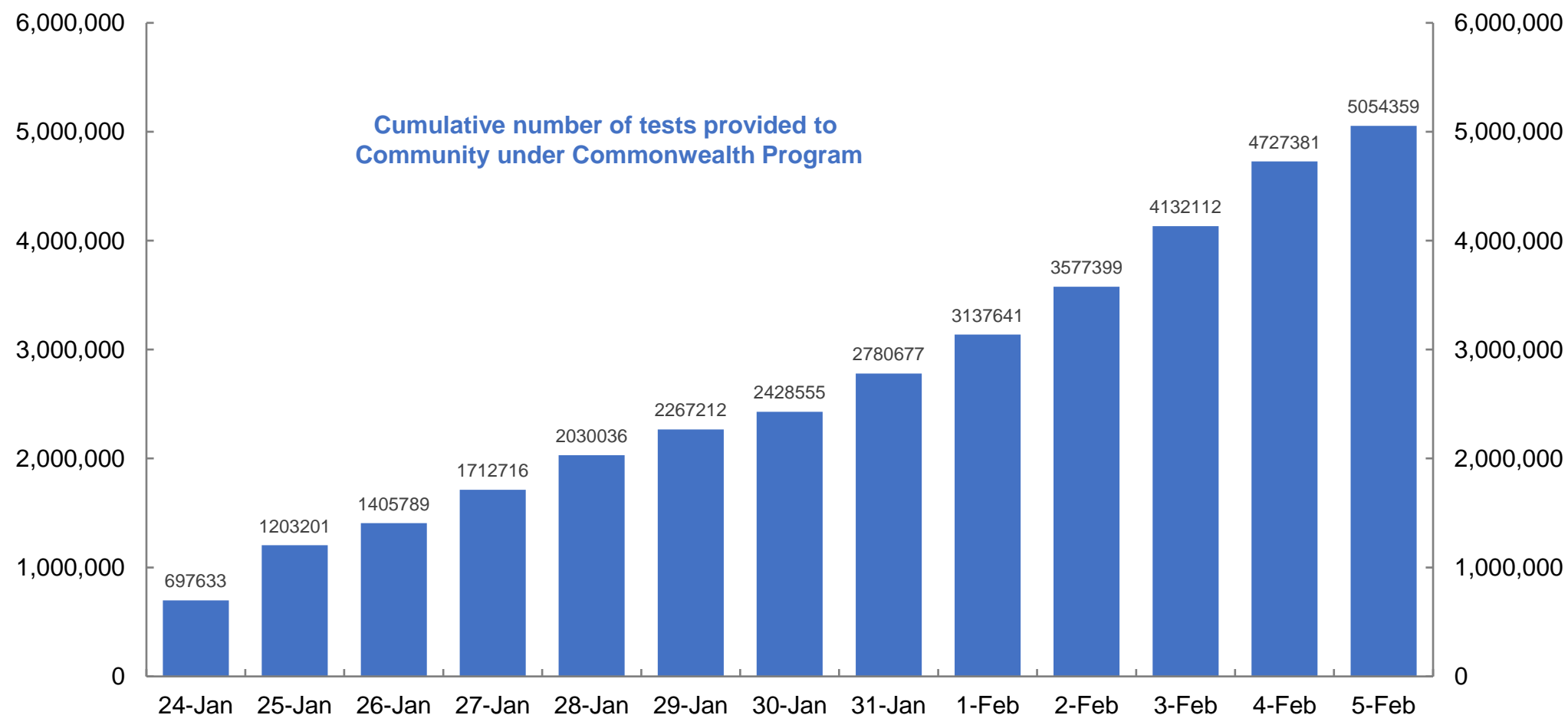


Source: OWID
Data downloaded: 06 Feb 2022 08:50
Latest data: 04 Feb 2022

Data as at
06 Feb 2022

Concessional rapid antigen test program

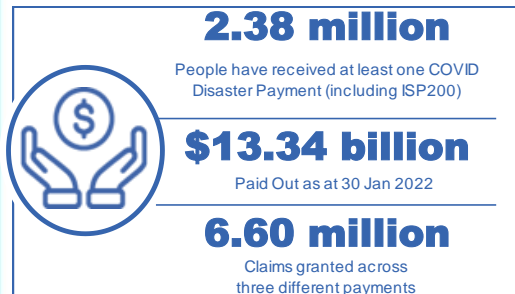
Over **4,272 pharmacies** have delivered over **5 million rapid antigen tests** to **approximately 1.2 million concession card holders** under the Government's concessional rapid antigen test program.



Pandemic Response Payments

Australia's COVID-19
Vaccine Roadmap

Data as at midnight:
30 Jan 2022
Updated weekly



COVID Disaster Payment:	5.89 million claims received - 2.19 million individuals paid a total of \$12.59 billion.
\$200 Income Support Payment:	353,000 claims received - 183,000 individuals paid a total of \$268.91 million.
Pandemic Leave Disaster Payment:	729,000 claims received - 539,000 individuals paid a total of \$576.5 million.



COVID Disaster Payment

assisting during a
lockdown event in a
Commonwealth hotspot.

Income Support Payment \$200

for income support
recipients who lost at
least 8 hours of work.

Pandemic Leave Disaster Payment

for those who have to
self-isolate, quarantine
or care.

For more information visit:
servicesaustralia.gov.au

COVID-19 DISASTER PAYMENTS

Northern Territory

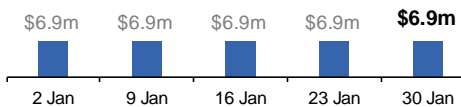
Lockdown (#3) from 16 Nov to 22 Nov
Claiming period ended 27 Dec

**7,500 people have received at least
one COVID Disaster Payment.**

\$6.9m paid out as at 30 Jan 2022.

**\$0 paid in initial payments in the week
ending 30 Jan 2022.**

Cumulative payments made by Territory since
activation on 25 Aug 2021.



Victoria

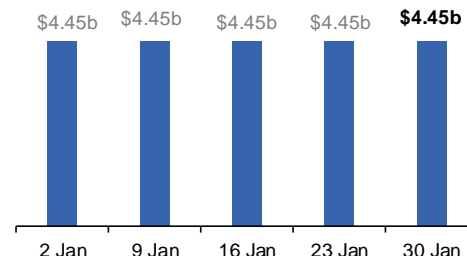
Lockdown (#6) from 6 Aug to 28 Oct
Claiming period ended 9 Dec

**745,000 people have received at least
one COVID Disaster Payment.**

\$4.45b paid out as at 30 Jan 2022.

**\$11,000 paid in initial and reoccurring
payments in the week ending
30 Jan 2022.**

Cumulative payments made by State since
activation on 8 Jun 2021.



New South Wales

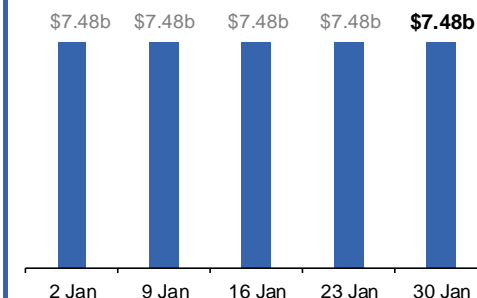
Lockdown from 24 Jun to 10 Oct
Claiming period ended 27 Nov

**1.08m people have received at least
one COVID Disaster Payment.**

\$7.48b paid out as at 30 Jan 2022.

**\$7,000 paid in initial and reoccurring
payments in the week ending
30 Jan 2022.**

Cumulative payments made by State since
activation on 1 Jul 2021.



Australian Capital Territory

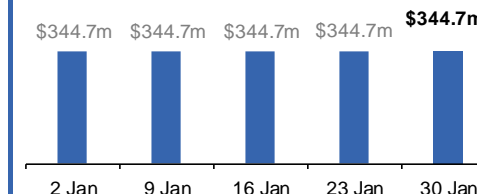
Lockdown from 12 Aug to 14 Oct
Claiming period ended 25 Nov

**65,000 people have received at least
one COVID Disaster Payment.**

\$344.7m paid out as at 30 Jan 2022.

**\$1,000 paid in initial and reoccurring
payments in the week ending
30 Jan 2022.**

Cumulative payments made by Territory since
activation on 20 Aug 2021.



Pandemic Response Payments (continued)

Data as at midnight:
30 Jan 2022
Updated weekly

COVID-19 DISASTER PAYMENTS

Tasmania

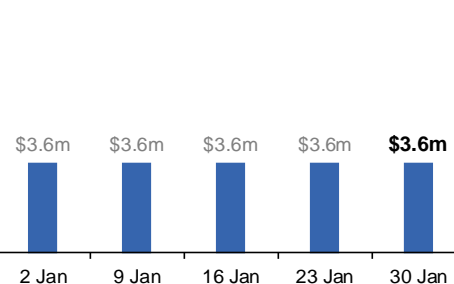
Lockdown from 15 Oct to 18 Oct
Claiming period ended 12 Nov

6,900 people have received at least one COVID Disaster Payment.

\$3.6m paid out as at 30 Jan 2022.

\$0 paid in initial and reoccurring payments in the week ending 30 Jan 2022.

Cumulative payments made by State since activation on 22 Oct 2021.



Queensland

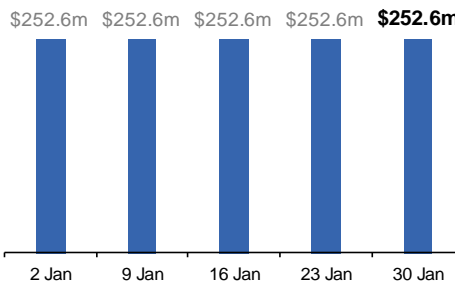
Lockdown from 31 Jul to 11 Aug
Claiming period ended 28 Aug

196,000 people have received at least one COVID Disaster Payment.

\$252.6m paid out as at 30 Jan 2022.

\$600 paid in initial and reoccurring payments in the week ending 30 Jan 2022.

Cumulative payments made by State since activation on 7 Aug 2021.



South Australia

Lockdown from 21 to 27 Jul
Claiming period ended 17 Aug

86,000 people have received at least one COVID Disaster Payment.

\$48.2m paid out as at 30 Jan 2022.

\$600 paid in initial and reoccurring payments in the week ending 30 Jan 2022.

Cumulative payments made by State since activation on 28 Jul 2021.

