



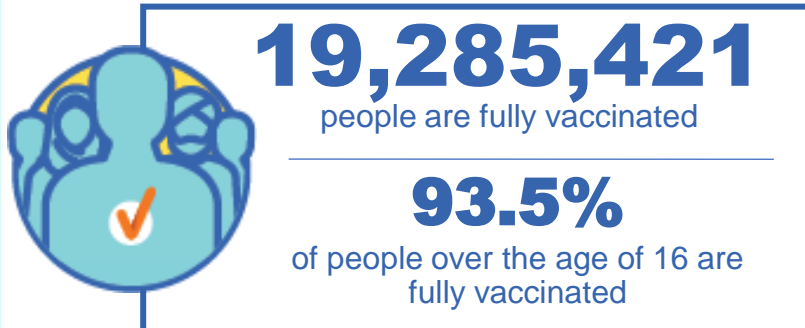
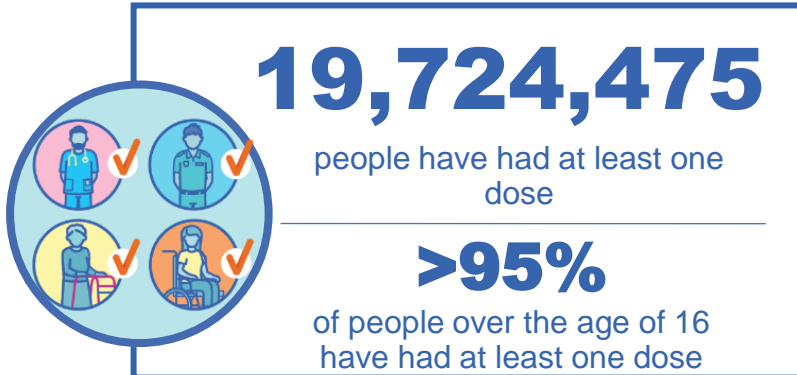
Australian Government
Operation COVID Shield

COVID-19 Vaccine Roll-out

03 February 2022

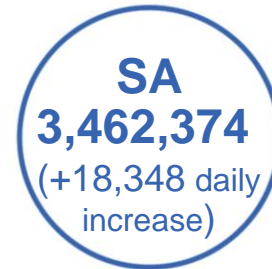
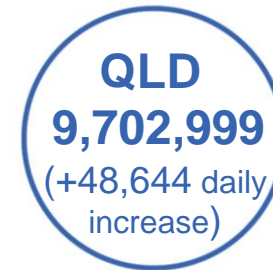
Data as at:
02 Feb 2022

Total vaccine doses



50,449,872 total vaccine doses administered nationally as at 02 February

+256,965 recorded in the last 24 hours



*Administration state breakdown indicates state in which a vaccine was administered

**Overall dose count includes instances of more than two doses per person in a small number of cases.

Source: Australian Immunisation Register

Booster Vaccinations

Data as at:
02 Feb 2022



8,418,676 total people over the age of 16 years old who have received more than two doses nationally

+226,997 people who have received more than two doses nationally in the last 24 hours

NSW
2,731,129
(66,869 daily increase)

VIC
2,238,504
(62,217 daily increase)

QLD
1,523,250
(39,749 daily increase)

WA
838,933
(28,971 daily increase)

TAS
182,175
(4,797 daily increase)

SA
607,349
(15,777 daily increase)

ACT
177,853
(5,017 daily increase)

NT
67,097
(1,773 daily increase)

52,386 doses administered to persons residing in other territories or with missing residential information

Source: Australian Immunisation Register

Data as at:
02 Feb 2022

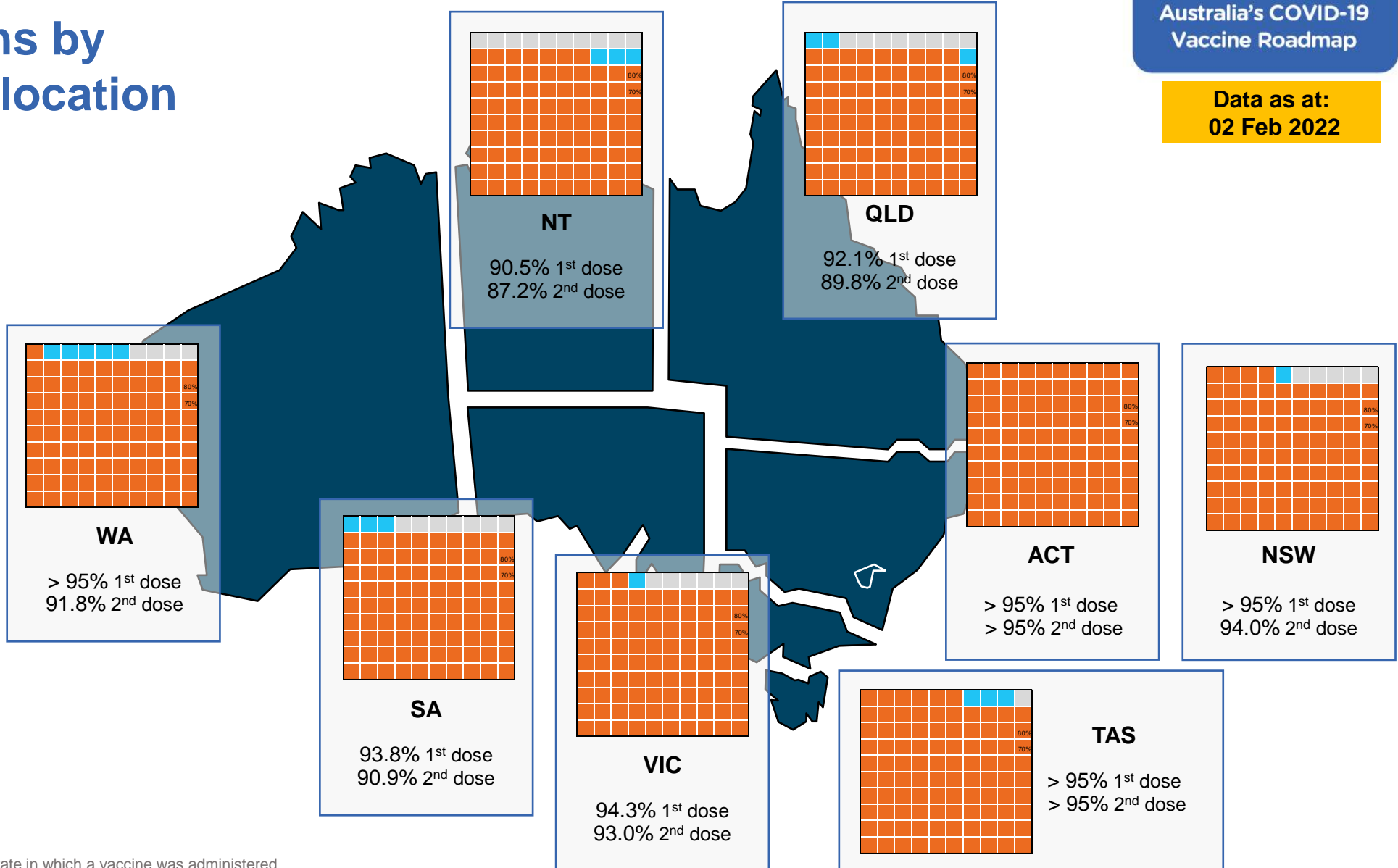
Vaccinations by residential location

First doses

Age	Today	4 weeks ago	8 weeks ago
16+	>95%	94.8%	93.5%
50+	>95%	>95%	>95%
70+	>95%	>95%	>95%

Fully vaccinated

Age	Today	4 weeks ago	8 weeks ago
16+	93.5%	92.0%	89.3%
50+	>95%	>95%	>95%
70+	>95%	>95%	>95%



*Residential state may differ from the state in which a vaccine was administered

Commonwealth and Jurisdiction vaccine doses administered

Data as at:
02 Feb 2022



50,449,872 total vaccine doses administered nationally as at 02 February

+ 256,965 recorded in the last 24 hours



19,259,106

doses administered by state and territory facilities

+ 52,565

recorded in the last 24 hours

NSW	Jurisdictions	Commonwealth
Cumulative	4,846,600	11,129,641
Daily increase	7,219	61,741

TAS	Jurisdictions	Commonwealth
Cumulative	560,074	554,644
Daily increase	1,510	4,106

VIC	Jurisdictions	Commonwealth
Cumulative	5,557,562	7,743,924
Daily increase	15,485	50,821

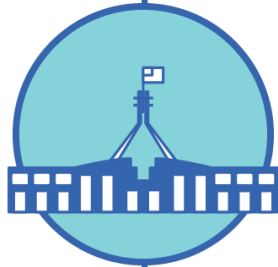
SA	Jurisdictions	Commonwealth
Cumulative	1,610,170	1,852,204
Daily increase	5,929	12,419

QLD	Jurisdictions	Commonwealth
Cumulative	3,600,614	6,102,385
Daily increase	7,083	41,561

ACT	Jurisdictions	Commonwealth
Cumulative	633,349	615,995
Daily increase	4,045	3,586

WA	Jurisdictions	Commonwealth
Cumulative	2,163,525	2,989,201
Daily increase	10,059	29,043

NT	Jurisdictions	Commonwealth
Cumulative	287,212	202,772
Daily increase	1,235	1,123



31,190,766

doses administered by commonwealth facilities

+ 204,400

recorded in the last 24 hours

29,960,910 total vaccine doses administered in primary care settings

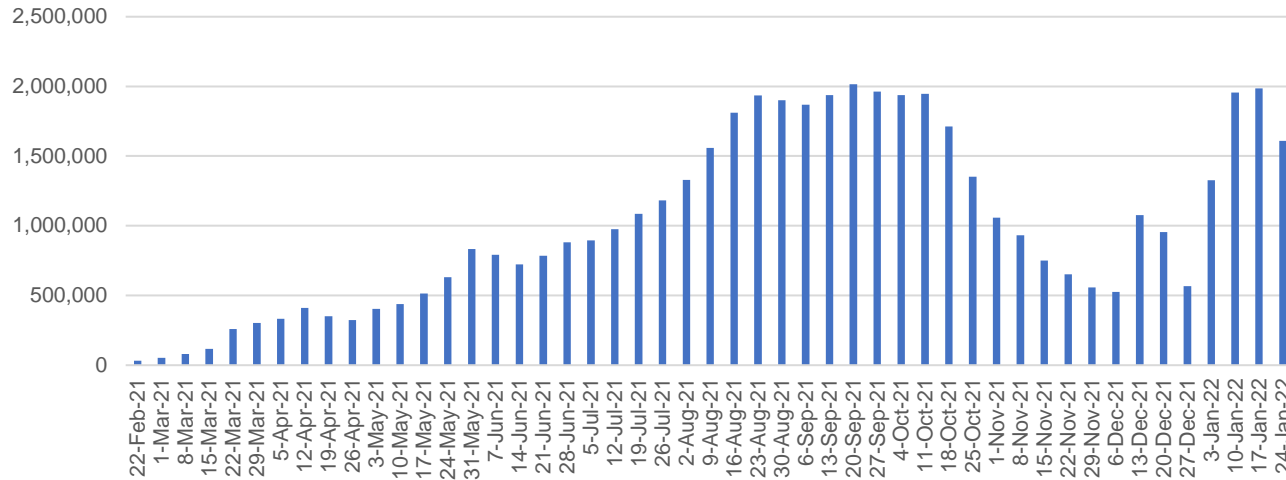
1,229,856 total vaccine doses administered in aged care and disability settings

Vaccine milestone charts

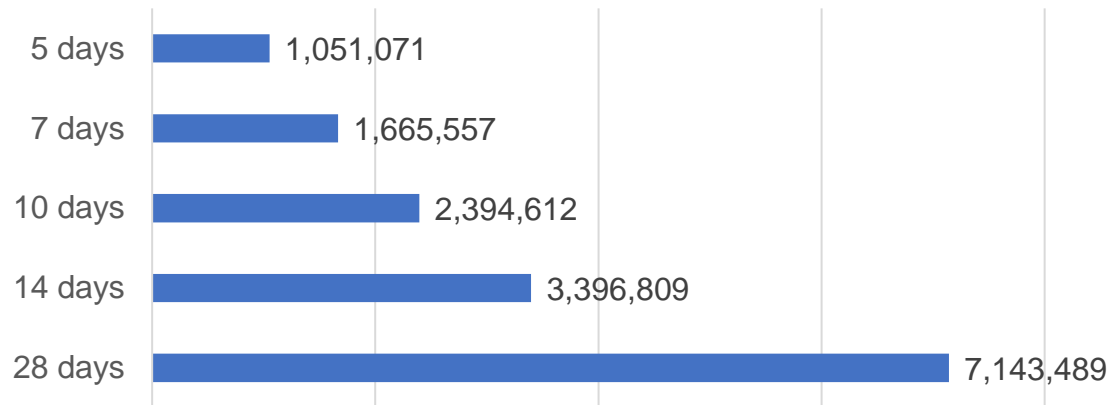
Data as at:
02 Feb 2022

Australia's COVID-19
Vaccine Roadmap

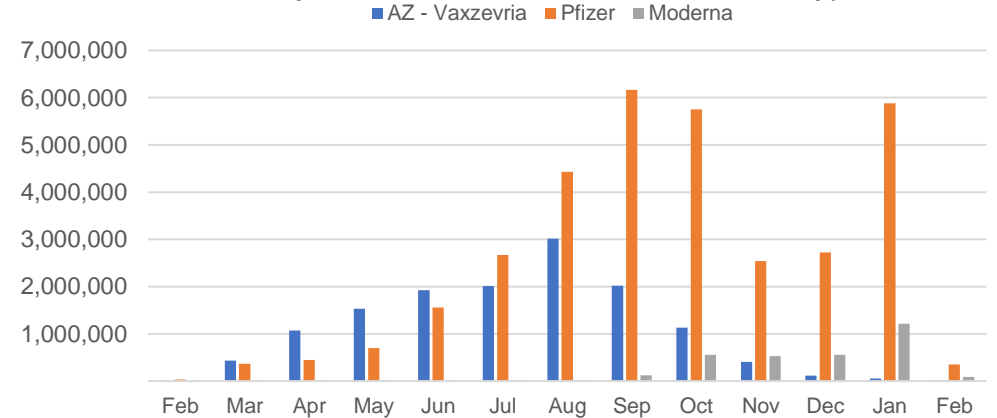
Doses Administered by Week



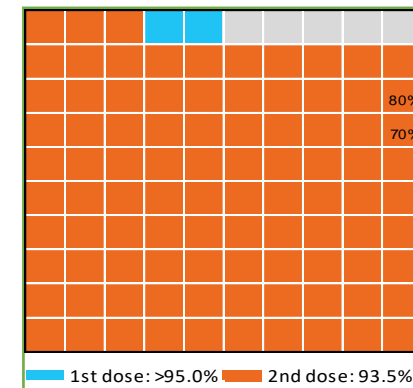
Doses Reported



Doses by administration month and vaccine type



Eligible population percentage coverage



*Each square represents 1% of the national population.
Squares are filled as milestones are achieved.

*Sourced from the Australian Immunisation Register.

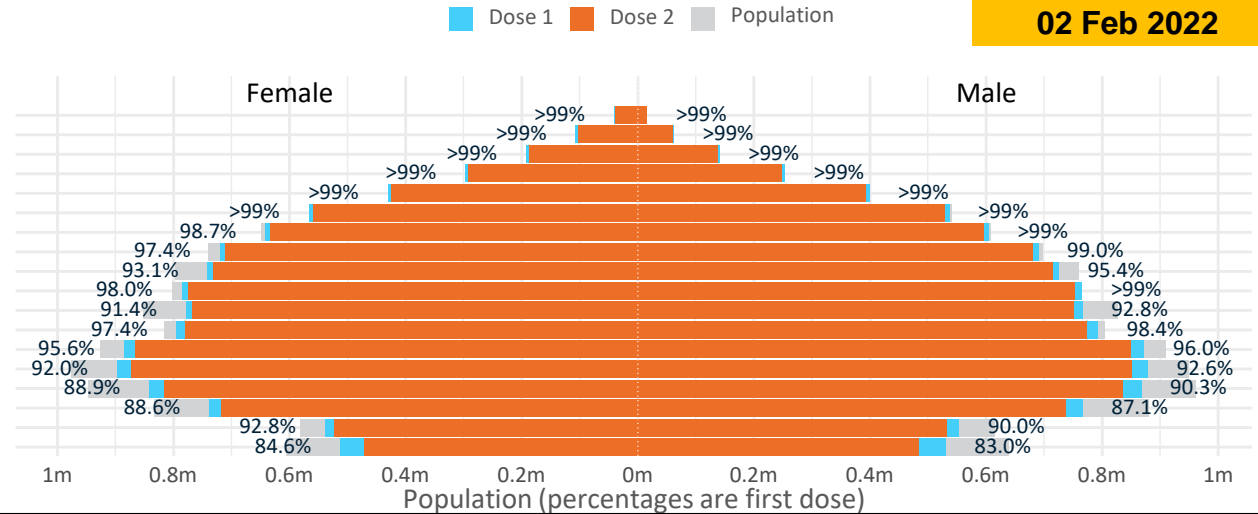
Doses by age and sex

First and second doses by age and sex

	16+	50+	12-15	5-11
Dose 1	95.66% (19,724,475 doses / 20,619,959 people)	>99% (8,721,166 doses / 8,749,703 people)	83.81% (1,042,626 doses / 1,243,990 people)	42.67% (971,343 doses / 2,276,638 people)
Dose 2	93.53% (19,285,421 doses / 20,619,959 people)	98.12% (8,585,071 doses / 8,749,703 people)	76.80% (955,357 doses / 1,243,990 people)	0.12% (2,643 doses / 2,276,638 people)

Data as at:
02 Feb 2022

Age	Dose 1	Dose 2
95+	56,885 (>99%)	53,183 (>99%)
90-94	169,337 (>99%)	162,559 (>99%)
85-89	333,019 (>99%)	323,981 (>99%)
80-84	549,989 (>99%)	540,130 (>99%)
75-79	829,340 (>99%)	818,167 (>99%)
70-74	1,103,875 (>99%)	1,089,910 (98.6%)
65-69	1,247,305 (>99%)	1,230,178 (97.8%)
60-64	1,411,819 (98.3%)	1,391,797 (96.9%)
55-59	1,467,307 (94.3%)	1,446,330 (93.0%)
50-54	1,552,290 (>99%)	1,528,836 (97.7%)
45-49	1,545,725 (92.2%)	1,519,123 (90.6%)
40-44	1,589,189 (98.1%)	1,556,321 (96.1%)
35-39	1,762,383 (96.0%)	1,718,984 (93.7%)
30-34	1,783,643 (92.7%)	1,729,523 (89.9%)
25-29	1,718,841 (90.2%)	1,659,915 (87.1%)
20-24	1,510,400 (88.2%)	1,460,510 (85.3%)
16-19	1,093,128 (91.4%)	1,055,974 (88.3%)
12-15	1,042,626 (83.8%)	955,357 (76.8%)



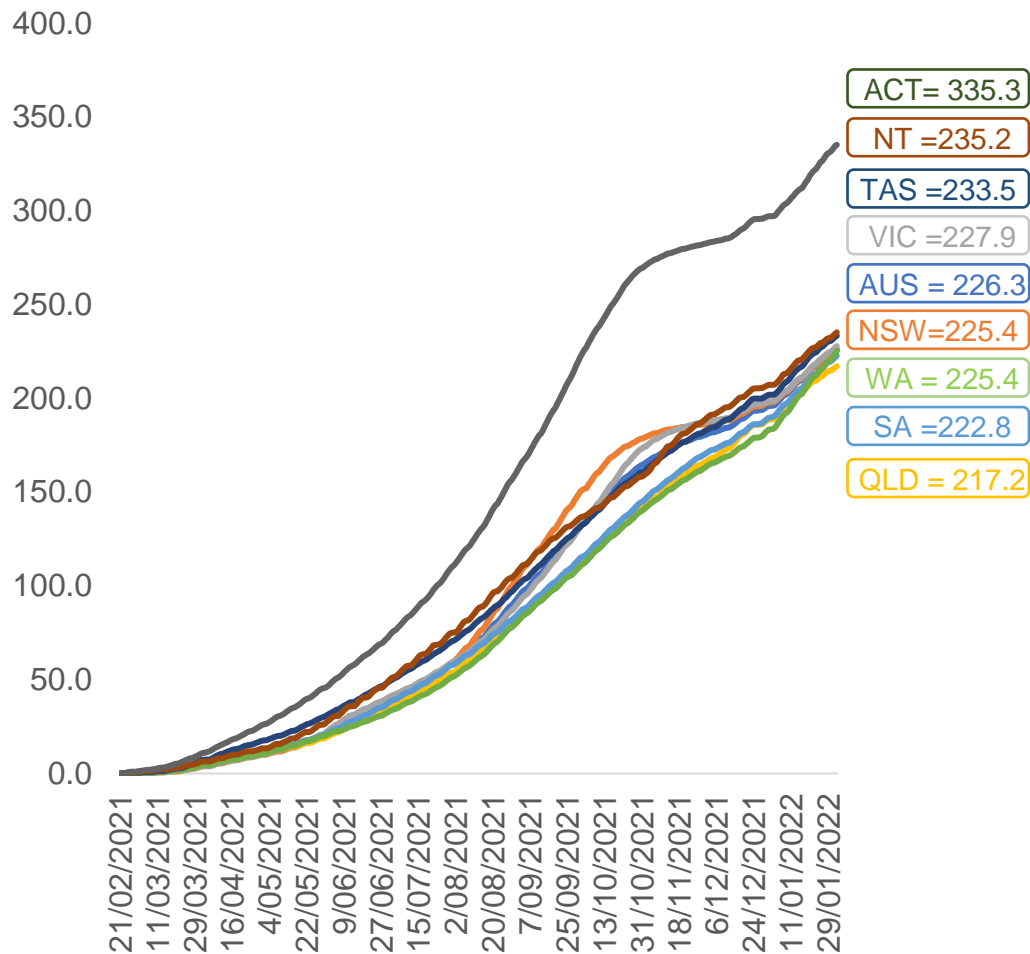
	AUS	ACT	NSW	NT	QLD	SA	TAS	VIC	WA
16 and over - dose 1	19,724,475	349,111	6,268,136	172,554	3,788,142	1,350,992	437,927	5,099,876	2,033,145
16 and over - dose 2	19,285,421	344,150	6,174,743	166,134	3,692,427	1,308,757	424,544	5,028,209	1,940,962
16 and over - population	20,619,959*	344,037	6,565,651	190,571	4,112,707	1,440,400	440,172	5,407,574	2,114,978
16 and over % with dose 1	95.66%	>99%	95.47%	90.55%	92.11%	93.79%	>99%	94.31%	96.13%
16 and over % with dose 2	93.53%	>99%	94.05%	87.18%	89.78%	90.86%	96.45%	92.98%	91.77%
5 to 11 - dose 1	971,343	28,209	298,375	10,340	176,893	68,506	24,529	272,201	86,836
5 to 11 - dose 2	2,643	69	1,095	34	447	73	16	800	89
5 to 11 - population	2,276,638	39,789	716,460	24,750	478,731	148,816	45,033	578,499	244,154
5 to 11 % with dose 1	42.67%	70.90%	41.65%	41.78%	36.95%	46.03%	54.47%	47.05%	35.57%
5 to 11 % with dose 2	0.12%	0.17%	0.15%	0.14%	0.09%	0.05%	0.04%	0.14%	0.04%
12 to 15 - dose 1	1,042,626	19,965	325,268	10,749	205,404	67,304	22,474	275,204	107,190
12 to 15 - dose 2	955,357	19,130	306,606	9,340	183,710	60,557	20,140	260,785	87,521
12 to 15 - population	1,243,990	19,693	390,330	13,060	270,146	82,747	26,308	308,611	132,869
12 to 15 % with dose 1	83.81%	>99%	83.33%	82.30%	76.03%	81.34%	85.43%	89.18%	80.67%
12 to 15 % with dose 2	76.80%	97.14%	78.55%	71.52%	68.00%	73.18%	76.55%	84.50%	65.87%

*National population will not equal sum of listed jurisdictions due to a small number of people counted in national population residing in some 'other' territories. Sum of state doses will not add to national total as some records are unable to be geocoded to a State or Territory. Doses sourced from Australian Immunisation Register, population from ABS ERP June 2020

Data as at:
02 Feb 2022

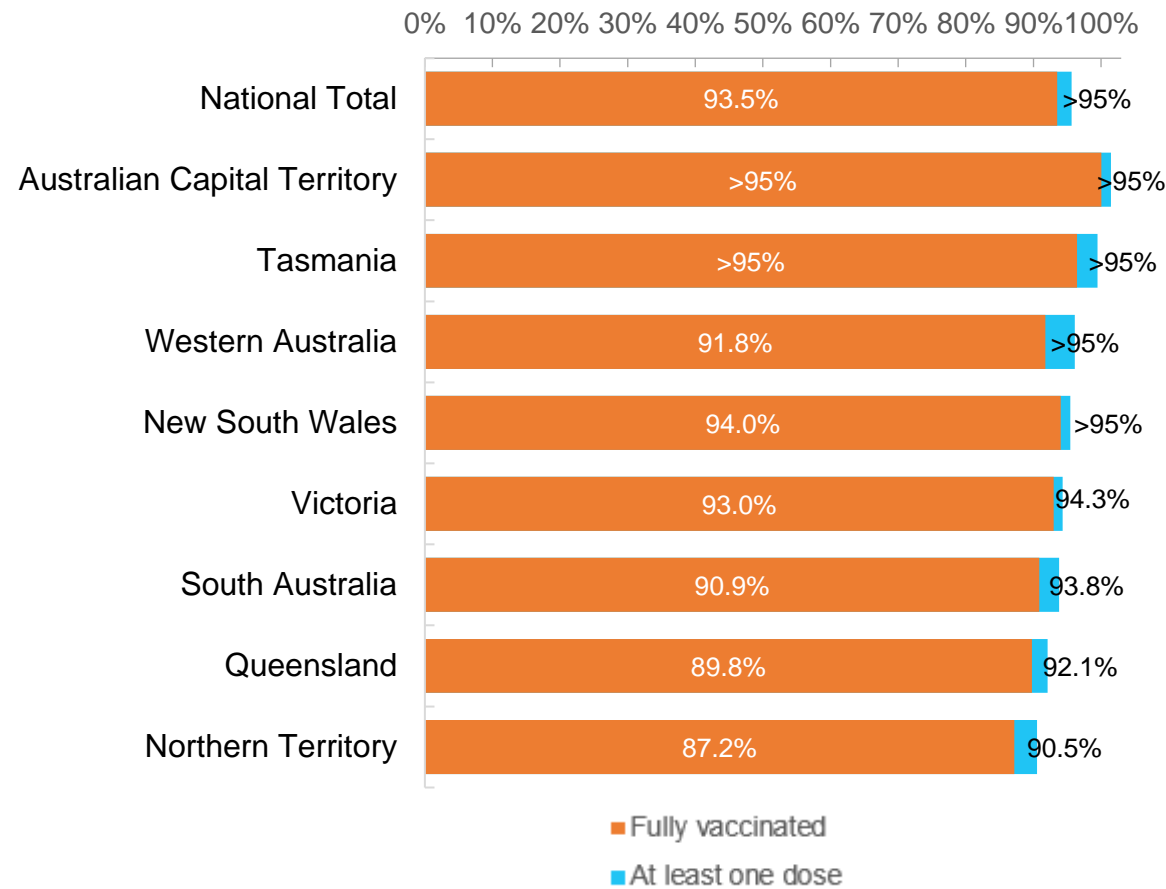
Vaccinations by location

Cumulative total doses administered vs eligible state populations*



*Not an indication of percentage vaccinated, numbers will exceed 100 due to multiple doses required per person of the population. All doses are included for those aged 12 and above, and are based on vaccination provider location.

First and Second Doses by residential location



Aboriginal and Torres Strait Islander peoples

Number of people vaccinated

Data as at:
01 Feb 2022
Updated weekly

Australia's COVID-19
Vaccine Roadmap



426,625

people over the age of 16
have had at least one dose

81.8%

of people over the age of 16
have had at least one dose



395,442

people over the age of 16
are fully vaccinated

75.8%

of people over the age of 16 are
fully vaccinated



**46,238
(65.0%)**

people aged 12-15 years
have had at least one dose

174 Aboriginal community controlled health services (ACCHS)

0#	50	27	42	12	3	21	19
ACT	NSW	NT	QLD	SA	TAS	VIC	WA

Medicare Address State ^{##}	Individuals Dose 1	Individuals Dose 1 %	Individuals Dose 2	Individuals Dose 2 %
Australian Capital Territory	4,885	90.9%	4,745	88.3%
New South Wales	135,563	86.4%	131,880	84.1%
Northern Territory	41,250	87.4%	37,575	79.6%
Queensland	112,403	79.2%	103,321	72.8%
South Australia	19,356	77.3%	17,307	69.1%
Tasmania	14,361	87.3%	13,624	82.8%
Victoria	35,241	89.0%	34,245	86.4%
Western Australia	47,736	75.6%	39,514	62.6%
Unknown/Other Territories	15,830	61.2%	13,231	51.2%
Totals	426,625	81.8%	395,442	75.8%

Source: Australian Immunisation Register

*Identifying as Aboriginal and Torres Strait Islander is optional and the estimated population may be under reported.

**Includes all Aboriginal and Torres Strait Islander peoples who have received a vaccination, not limited to those administered in an ACCHS setting

#ACCHS in the ACT are currently operating as a Commonwealth Vaccine Clinics so not included to avoid double counting

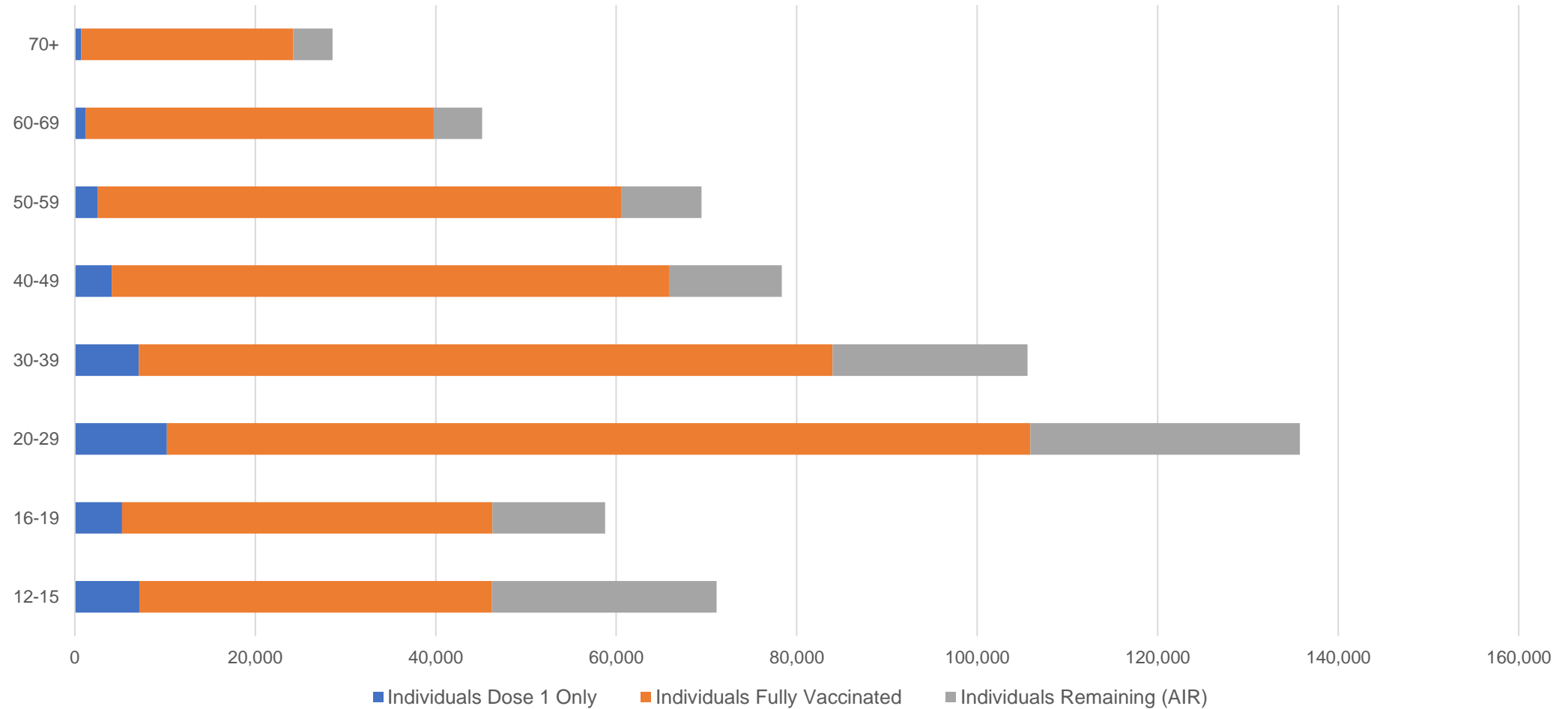
##The above table includes all identified Aboriginal and Torres Strait Islander people who are aged 16 and above by their state of residence.

Aboriginal and Torres Strait Islander peoples

Number of people vaccinated by age

Data as at:
01 Feb 2022
Updated weekly

Australia's COVID-19
Vaccine Roadmap



Source: Australian Immunisation Register

Commonwealth primary care

Data as at:
02 Feb 2022

Australia's COVID-19
Vaccine Roadmap



Primary care vaccine administration sites

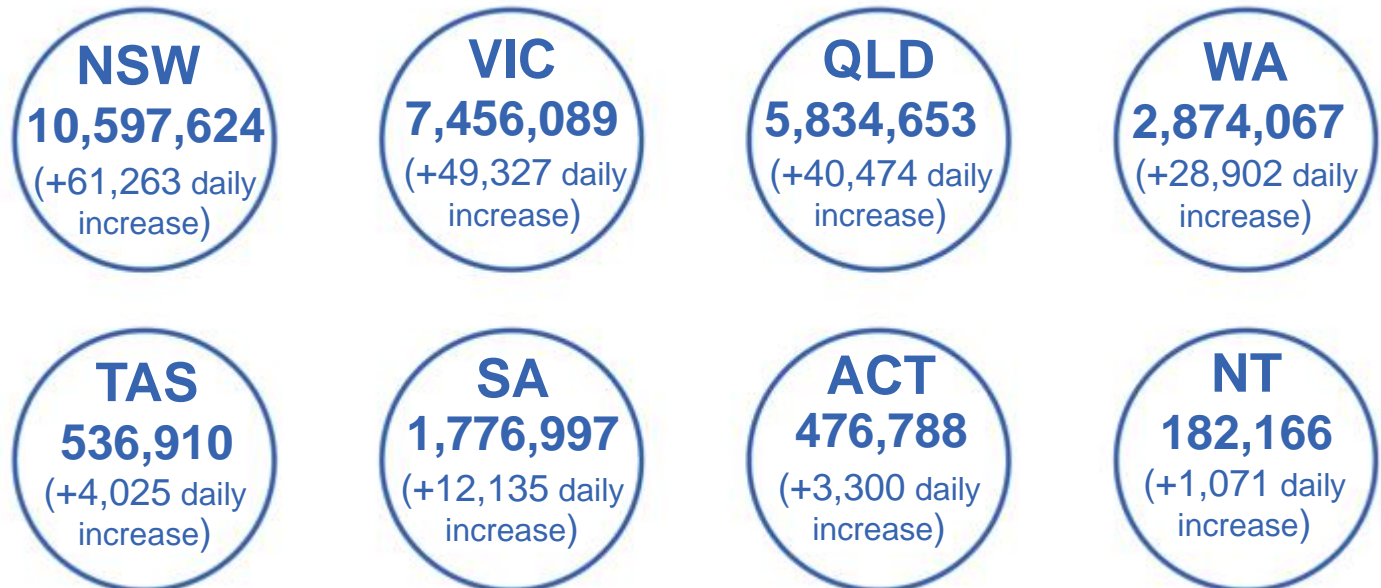
5,738	128	174	3,513
GPs	CVCs	ACCHS	Pharmacies



29,960,910 total vaccine doses administered
primary care settings as at 02 February
+ 202,314 recorded in the last 24 hours

Primary care vaccinations by provider type

	Doses administered	Daily increase	7 day increase
General Practice* includes other Commonwealth	24,921,882	136,078	831,334
Pharmacy	5,039,028	66,236	381,064



225,616 doses administered to persons residing in other territories or with missing residential information

*General practice includes Commonwealth Vaccination Clinics, Aboriginal Community Health Centres, Royal Flying Doctor Service and other Commonwealth vaccination facilities

Source: Australian Immunisation Register

Data as at:
02 Feb 2022

Commonwealth aged care and disability doses administered



1,229,856 (+ 2,086 last 24 hours)

Total vaccine doses administered in aged care and disability facilities as at 02 February

Number of doses administered as part of the Commonwealth aged and disability care rollout

NSW
550,440
(+249 daily increase)

VIC
232,609
(+750 daily increase)

QLD
193,722
(+343 daily increase)

WA
95,409
(+357 daily increase)

TAS
21,759
(+30 daily increase)

SA
82,186
(+340 daily increase)

ACT
16,045
(+27 daily increase)

NT
7,000
(+0 daily increase)

30,686

doses administered to persons residing in other territories or with missing residential information

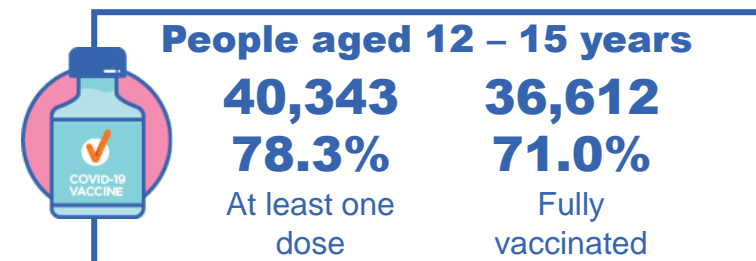
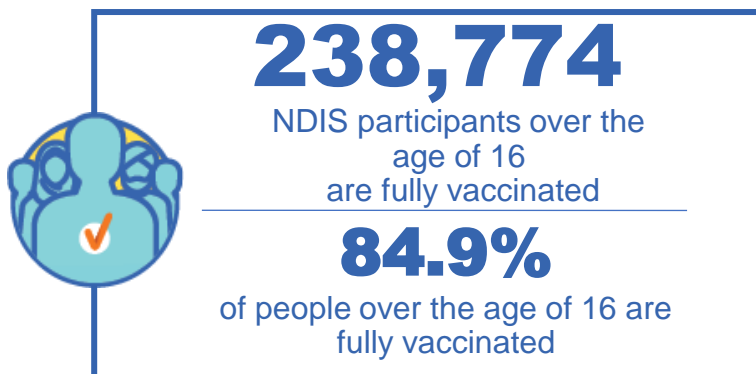
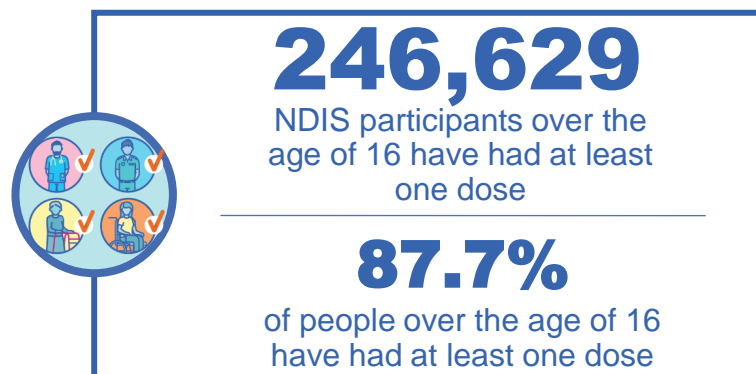
*Sourced from the Australian Immunisation Register. Includes all persons vaccinated at participating residential aged care, disability and related industry settings.
**State level breakdown indicates the residential location and may not align to the state in which the vaccination occurred.

Source: Australian Immunisation Register

National Disability Insurance Scheme (NDIS) reported vaccinations

Data as at:
27 January 2022
Updated weekly

Australia's COVID-19
Vaccine Roadmap



NDIS participant vaccinations

	People aged 16+ with at least one dose	People aged 16+ fully vaccinated	% People aged 16+ with at least one dose	% People aged 16+ fully vaccinated
ACT	4,742	4,664	90.20%	88.70%
NSW	76,905	75,510	88.60%	87.00%
NT	2,135	2,008	78.90%	74.20%
QLD	48,133	46,268	86.60%	83.20%
SA	19,860	19,046	85.10%	81.20%
TAS	6,148	5,856	87.30%	83.20%
VIC	66,196	64,807	89.30%	87.40%
WA	22,406	20,269	85.30%	78.40%
National	246,629	238,774	87.70%	84.90%

Source: Linkage between National Disability Insurance Agency data and the Australian Immunisation Register. Total NDIS participants data as at 17th October. Australian Immunisation Register data as at 26 January. Includes all participants regardless of residence type.

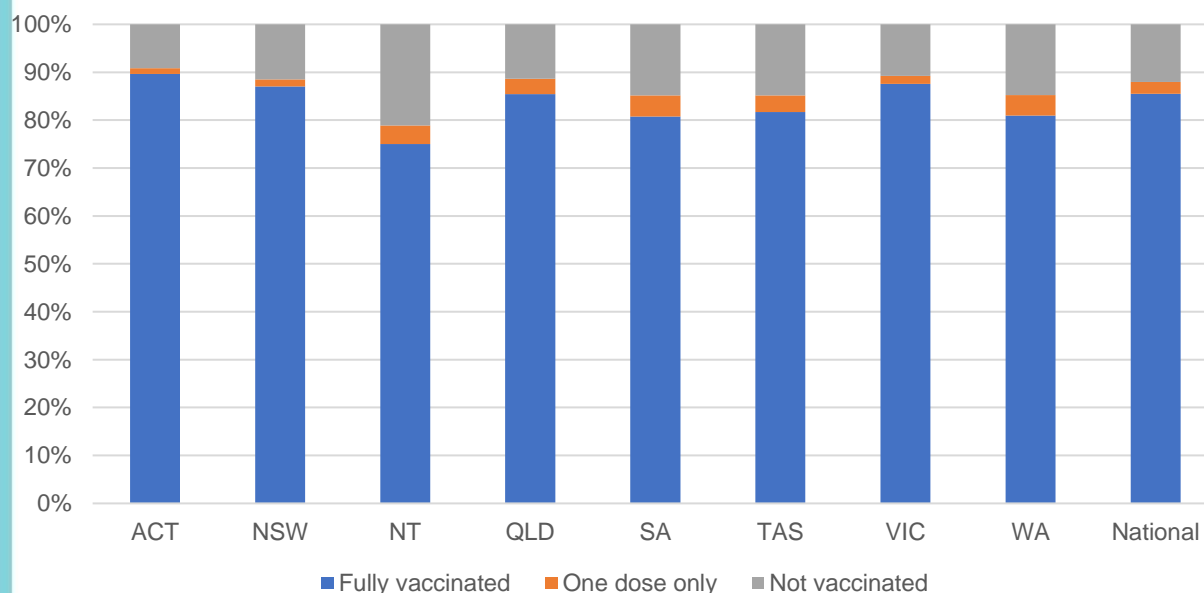
National Disability Insurance Scheme (NDIS) reported vaccinations

Data as at:
27 January 2022
Updated Weekly

Australia's COVID-19
Vaccine Roadmap

NATIONAL	Total people with at least one dose	People fully vaccinated	Total number of individuals in cohort	% People with at least one dose	% People fully vaccinated
NDIS participants living in disability accommodation	20,072	19,560	22,800	88.00%	85.80%

NDIS participants in disability and aged care accommodation



Source: Linkage between National Disability Insurance Agency data and the Australian Immunisation Register. Includes participants residing in disability accommodation only.

Source: Total NDIS participants numbers as at 17th October. Participant data as at 26 January. Australian Immunisation Register data as at 26 January. Worker data as at 27th January.

NDIS workforce vaccinations

	NDIS workers with at least one dose	NDIS workers fully vaccinated	% NDIS workers with at least one dose	% NDIS workers fully vaccinated
NSW	109,317	108,749	96.7%	96.2%
VIC	104,011	103,507	97.8%	97.3%
QLD	64,407	63,437	96.1%	94.6%
WA	30,910	29,051	97.4%	91.5%
SA	33,929	32,717	98.0%	94.5%
TAS	10,140	9,946	99.5%	97.6%
ACT	3,397	3,387	99.4%	99.1%
NT	3,062	3,017	99.4%	97.9%
TOTAL	359,173	353,811	97.2%	95.8%

Source: the NDIS Commission has established a requirement for registered NDIS providers who provide intensive disability support services to report on the vaccination status of workers they employ, or otherwise engage, to deliver NDIS-funded supports and services, and who are required to be vaccinated in accordance with in-force state and territory public health orders. The statistics reflect data reported to the NDIS Commission by registered NDIS providers and should be considered indicative and subject to change

Note: Some registered NDIS providers are yet to report on the vaccination status of their workforce. The NDIS Commission is working with those providers around reporting requirements.

Remaining workers not included include those exempt from vaccination requirements, workers whose vaccination status is not yet verified by the provider (such as workers on leave) and provider reporting anomalies.

Data as at: 02 Feb 2022

Residential aged care vaccination rollout

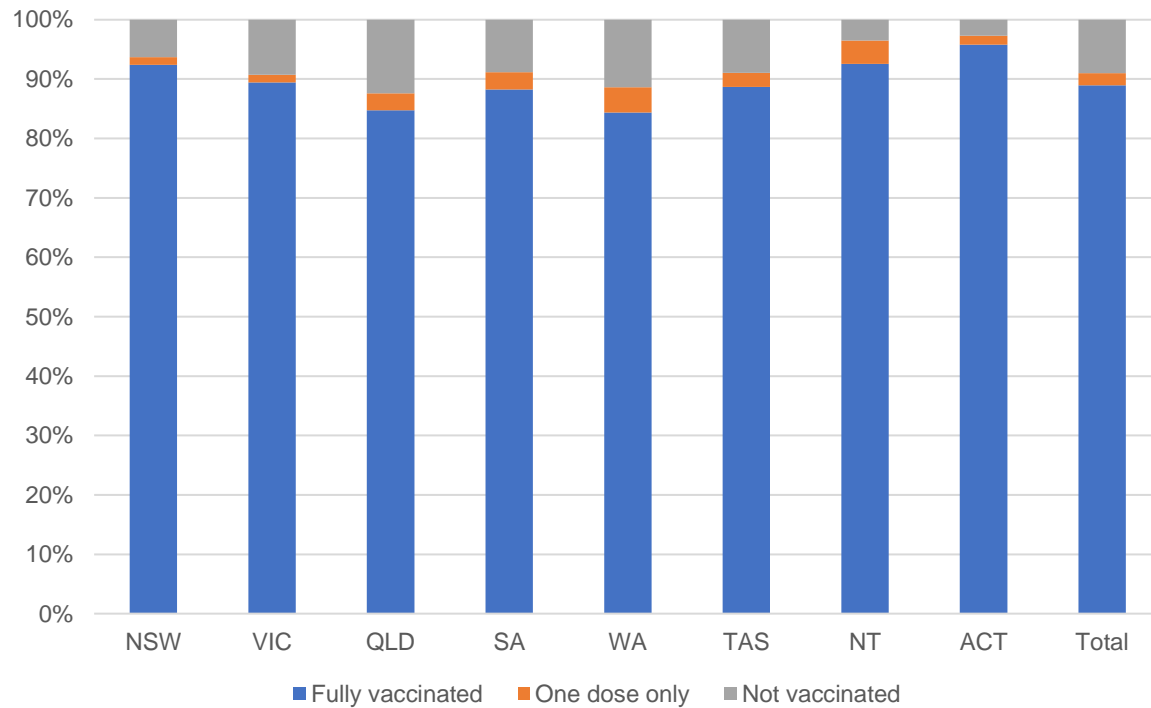
Residential aged care facilities status

100% Commonwealth facilities visited (2,590 planned sites)

169,434 People fully vaccinated

173,324 People with at least one dose

Aged care resident vaccinations



Aged care worker vaccinations

Jurisdictions	Total workers with at least one dose	Workers fully vaccinated	% Workers with at least one dose	% Workers fully vaccinated
NSW	78,535	78,501	98.7%	98.7%
VIC	70,089	70,087	98.4%	98.4%
QLD	48,609	48,596	99.0%	99.0%
SA	27,005	26,962	98.6%	98.4%
WA	23,974	23,812	99.2%	98.5%
TAS	7,609	7,598	99.5%	99.3%
NT	862	862	100.0%	100.0%
ACT	3,065	3,065	100.0%	100.0%
Total	259,748	259,483	98.8%	98.7%

Source: My Aged Care Portal vaccination progress

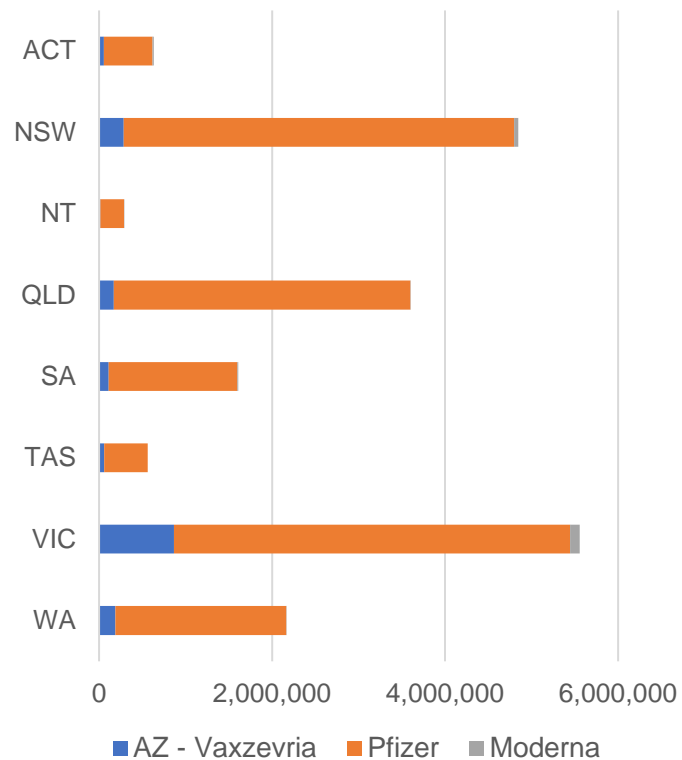
*Status updates are provided by facilities at least once per week. Reporting is updated Monday to Friday to encompass different facility updates being made on different days.

Data is sourced directly from Aged Care Service Providers and is not drawn or closely aligned with data from AIR due to inconsistencies and potential lags in uploading of records.

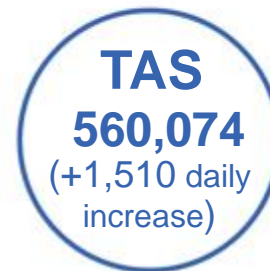
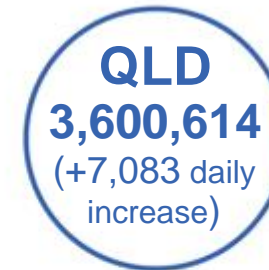
Data as at:
02 Feb 2022

Jurisdiction administered

Total vaccine doses administered in State and Territory clinics as at 02 February



19,259,106 total vaccine doses administered in State and Territory clinics as at 02 February
 + **52,565** recorded in the last 24 hours
 + **433,715** recorded in the last 7 days

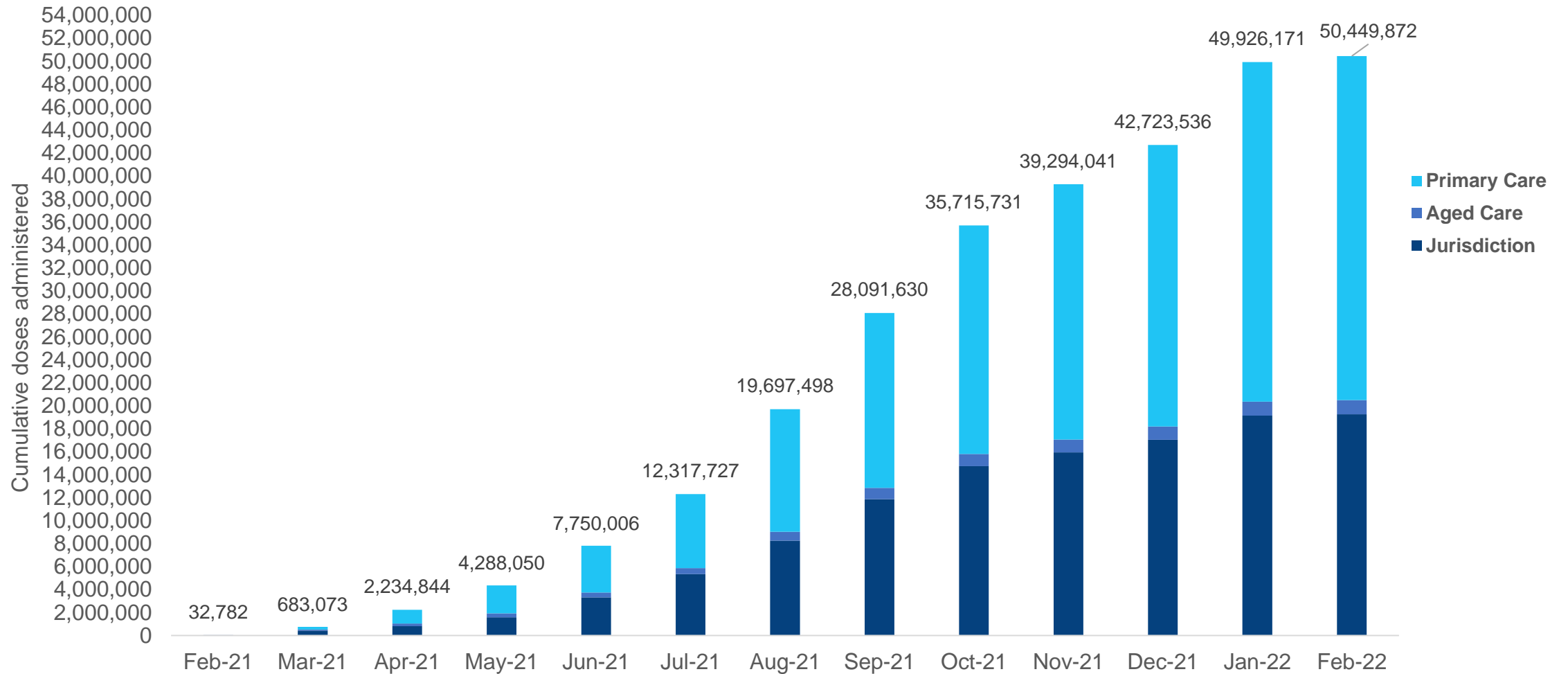


*Sourced from the Australian Immunisation Register. Numbers are calculated as difference in daily cumulative reported numbers to allow for historical corrections.

Source: Australian Immunisation Register

Data as at:
02 Feb 2022

Cumulative doses administered by channel



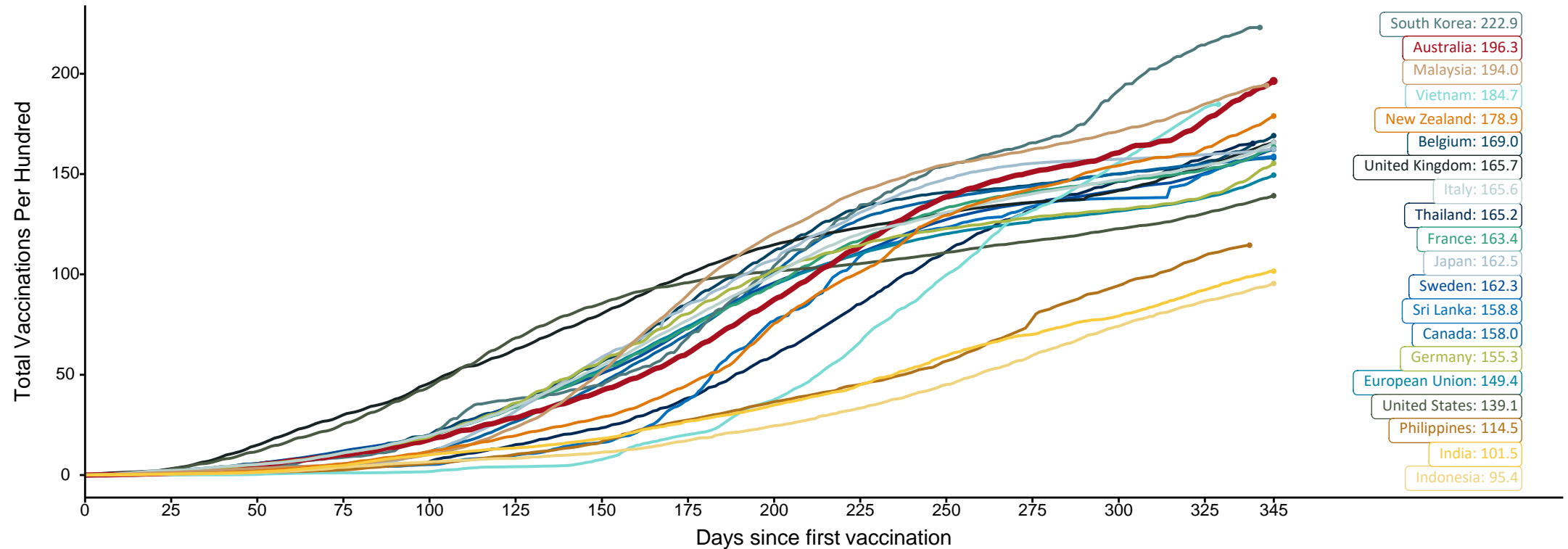
Source: Australian Immunisation Register

Doses at equivalent stages of rollout (Day 345)

Data as at:
02 Feb 2022

The x-axis is truncated at the length of Australia's vaccination program. Countries with intermittent reporting have had their doses per 100 imputed to Australia's current stage of rollout. Israel excluded as it is beyond scale of the graph

Cumulative doses administered (02 Feb): **50,449,872**

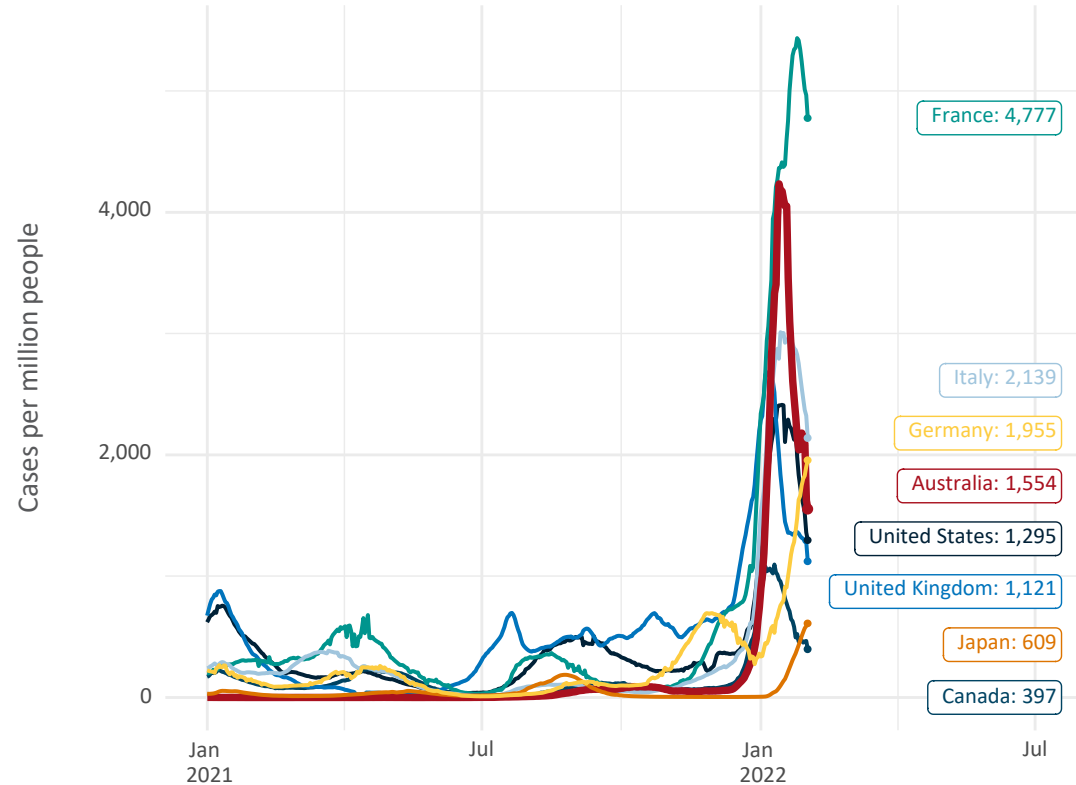


Note: From 15 September 2021, data for Australia includes all doses administered to people 12 and over. Prior to 15 September, data was for 16 and over
 Due to data revisions, Singapore has been removed from the chart
 Source: Department of Health (Australia), Our World in Data (international)
 Latest data: 02 February

Data as at:
02 Feb 2022

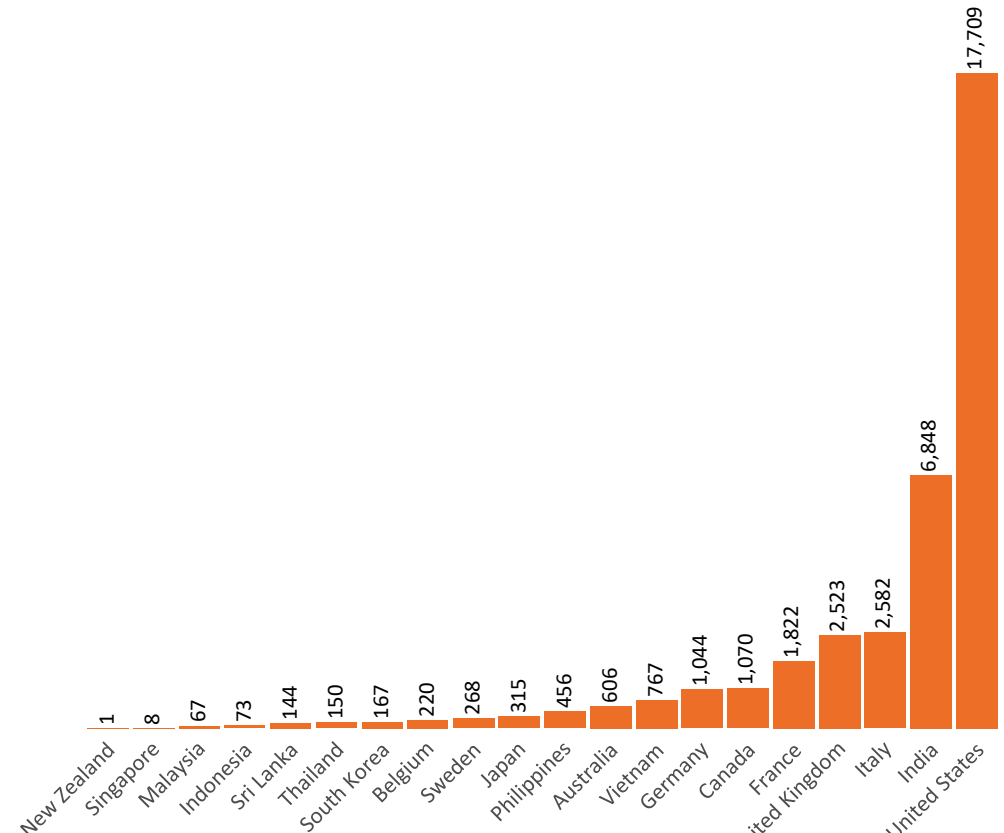
International data – COVID-19

New daily cases per million in 2021, Australia and G7 countries
Smoothed - 7 day average



Source: OWID
Data downloaded: 03 Feb 2022 08:19
Latest data: 01 Feb 2022

COVID-19 deaths in past 7 days - Australia and select countries

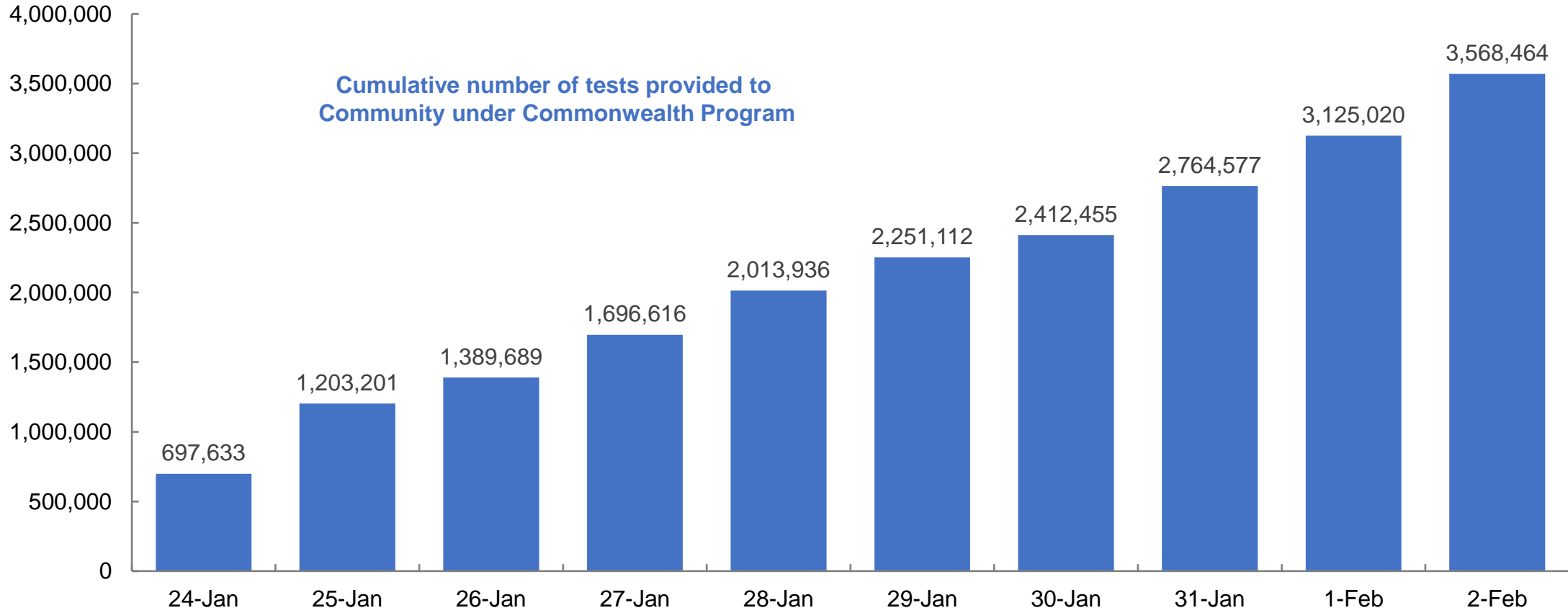


Source: OWID
Data downloaded: 03 Feb 2022 08:19
Latest data: 01 Feb 2022

Concessional rapid antigen test program

Over **3,750 pharmacies** have delivered over **3.5 million rapid antigen tests** to **approximately 858,000 concession card holders** under the Government's concessional rapid antigen test program.


Data as at
3 Feb 2022



Data sourced from GuildLink, 3 Feb 2022

Data as at midnight:
30 Jan 2022
Updated weekly

Pandemic Response Payments



2.38 million
People have received at least one COVID Disaster Payment (including ISP200)

\$13.34 billion
Paid Out as at 30 Jan 2022

6.60 million
Claims granted across three different payments




96%
of Claims Received Digitally



COVID Disaster Payment:	5.89 million claims received - 2.19 million individuals paid a total of \$12.59 billion.
\$200 Income Support Payment:	353,000 claims received - 183,000 individuals paid a total of \$268.91 million.
Pandemic Leave Disaster Payment:	729,000 claims received - 539,000 individuals paid a total of \$576.5 million.

COVID-19 DISASTER PAYMENTS



THREE PAYMENTS AVAILABLE

COVID Disaster Payment
assisting during a lockdown event in a Commonwealth hotspot.

Income Support Payment \$200
for income support recipients who lost at least 8 hours of work.

Pandemic Leave Disaster Payment
for those who have to self-isolate, quarantine or care.

For more information visit:
servicesaustralia.gov.au

Northern Territory
Lockdown (#3) from 16 Nov to 22 Nov
Claiming period ended 27 Dec

7,500 people have received at least one COVID Disaster Payment.

\$6.9m paid out as at 30 Jan 2022.

\$0 paid in initial payments in the week ending 30 Jan 2022.

Cumulative payments made by Territory since activation on 25 Aug 2021.



Date	Cumulative Payments
2 Jan	\$6.9m
9 Jan	\$6.9m
16 Jan	\$6.9m
23 Jan	\$6.9m
30 Jan	\$6.9m

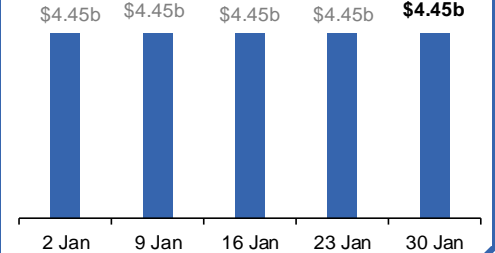
Victoria
Lockdown (#6) from 6 Aug to 28 Oct
Claiming period ended 9 Dec

745,000 people have received at least one COVID Disaster Payment.

\$4.45b paid out as at 30 Jan 2022.

\$11,000 paid in initial and reoccurring payments in the week ending 30 Jan 2022.

Cumulative payments made by State since activation on 8 Jun 2021.



Date	Cumulative Payments
2 Jan	\$4.45b
9 Jan	\$4.45b
16 Jan	\$4.45b
23 Jan	\$4.45b
30 Jan	\$4.45b

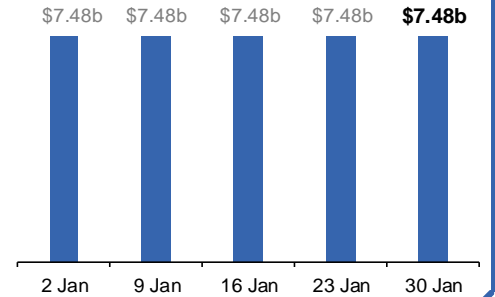
New South Wales
Lockdown from 24 Jun to 10 Oct
Claiming period ended 27 Nov

1.08m people have received at least one COVID Disaster Payment.

\$7.48b paid out as at 30 Jan 2022.

\$7,000 paid in initial and reoccurring payments in the week ending 30 Jan 2022.

Cumulative payments made by State since activation on 1 Jul 2021.



Date	Cumulative Payments
2 Jan	\$7.48b
9 Jan	\$7.48b
16 Jan	\$7.48b
23 Jan	\$7.48b
30 Jan	\$7.48b

Australian Capital Territory
Lockdown from 12 Aug to 14 Oct
Claiming period ended 25 Nov

65,000 people have received at least one COVID Disaster Payment.

\$344.7m paid out as at 30 Jan 2022.

\$1,000 paid in initial and reoccurring payments in the week ending 30 Jan 2022.

Cumulative payments made by Territory since activation on 20 Aug 2021.



Date	Cumulative Payments
2 Jan	\$344.7m
9 Jan	\$344.7m
16 Jan	\$344.7m
23 Jan	\$344.7m
30 Jan	\$344.7m

Data as at midnight:
30 Jan 2022
Updated weekly

Pandemic Response Payments (continued)

COVID-19 DISASTER PAYMENTS

Tasmania

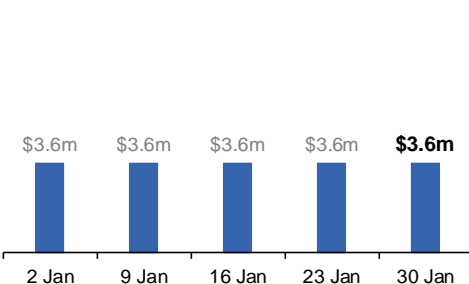
Lockdown from 15 Oct to 18 Oct
Claiming period ended 12 Nov

6,900 people have received at least one COVID Disaster Payment.

\$3.6m paid out as at 30 Jan 2022.

\$0 paid in initial and reoccurring payments in the week ending 30 Jan 2022.

Cumulative payments made by State since activation on 22 Oct 2021.



Queensland

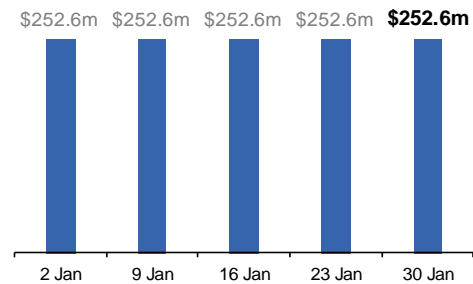
Lockdown from 31 Jul to 11 Aug
Claiming period ended 28 Aug

196,000 people have received at least one COVID Disaster Payment.

\$252.6m paid out as at 30 Jan 2022.

\$600 paid in initial and reoccurring payments in the week ending 30 Jan 2022.

Cumulative payments made by State since activation on 7 Aug 2021.



South Australia

Lockdown from 21 to 27 Jul
Claiming period ended 17 Aug

86,000 people have received at least one COVID Disaster Payment.

\$48.2m paid out as at 30 Jan 2022.

\$600 paid in initial and reoccurring payments in the week ending 30 Jan 2022.

Cumulative payments made by State since activation on 28 Jul 2021.

