



Australian Government
Operation COVID Shield

COVID-19 Vaccine Roll-out

28 February 2022

Data as at:
27 Feb 2022

Total vaccine doses



54,043,583 total vaccine doses administered nationally as at 27 February
+30,858 recorded in the last 24 hours



19,854,314

people have had at least one dose

>95%

of people over the age of 16 have had at least one dose



19,474,877

people are fully vaccinated

94.4%

of people over the age of 16 are fully vaccinated



11,440,678

people over the age of 16 who have received more than two doses

NSW
16,890,143
(+5,720 daily increase)

VIC
14,293,590
(+9,023 daily increase)

QLD
10,283,337
(+2,444 daily increase)

WA
5,773,566
(+9,066 daily increase)

TAS
1,199,640
(+1,036 daily increase)

SA
3,710,016
(+2,503 daily increase)

ACT
1,371,266
(+873 daily increase)

NT
522,025
(+193 daily increase)

*Administration state breakdown indicates state in which a vaccine was administered
**Overall dose count includes instances of more than two doses per person in a small number of cases.

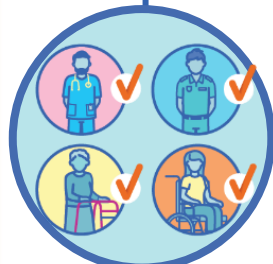
Source: Australian Immunisation Register

Booster Vaccinations

Data as at:
27 Feb 2022



155,107
Indigenous people who have received more than two doses
48.2%
of eligible population (321,771)



153,826
Aged Care Residents who have received more than two doses##
89.1%
of eligible population (172,710)



148,491 | **18,530**
NDIS participants | NDIS residents
who have received more than two doses#
66.0% | **80.5%**
of eligible population | of eligible population
(224,986) | (23,019)



11,440,678 total people who have received more than two doses nationally
+25,329 recorded in the last 24 hours
63.4% of people who are eligible (18,045,083) have received more than two doses

NSW	People	% of Eligible
Cumulative	3,554,291	58.3%
Daily increase	4,867	

VIC	People	% of Eligible
Cumulative	3,121,503	63.3%
Daily increase	7,711	

QLD	People	% of Eligible
Cumulative	1,992,700	62.6%
Daily increase	1,960	

WA	People	% of Eligible
Cumulative	1,302,118	80.5%
Daily increase	6,987	

SA	People	% of Eligible
Cumulative	808,560	69.3%
Daily increase	2,010	

TAS	People	% of Eligible
Cumulative	251,990	65.2%
Daily increase	819	

ACT	People	% of Eligible
Cumulative	237,285	69.8%
Daily increase	388	

NT	People	% of Eligible
Cumulative	91,252	62.7%
Daily increase	164	

80,979

doses administered to persons residing in other territories or with missing residential information

*People may belong to multiple groups and could be represented in the above breakdowns multiple times.

NDIS participants data as at 23 February 2022.

Aged Care Residents data as at 24 February 2022.

Source: Australian Immunisation Register

Data as at:
27 Feb 2022

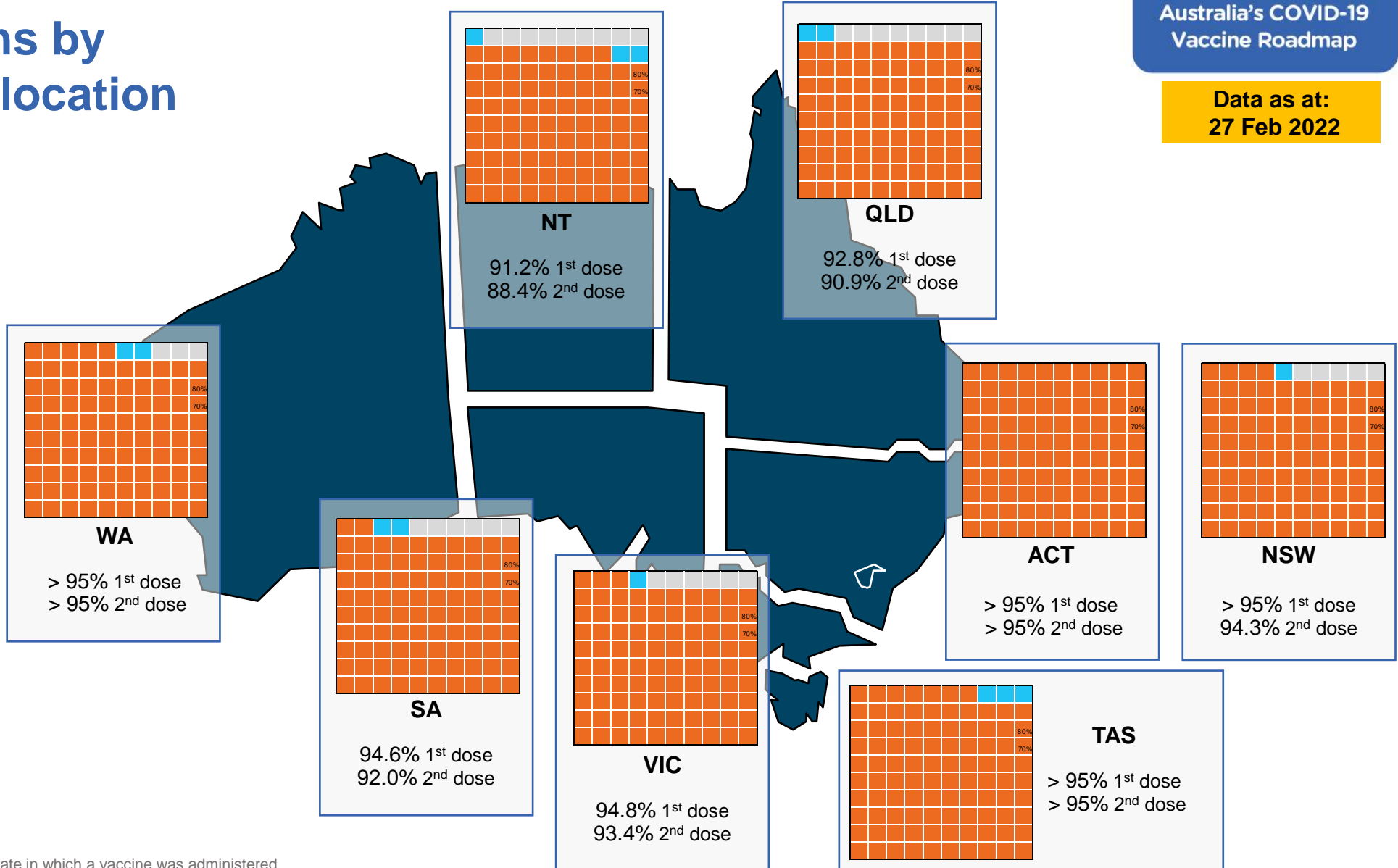
Vaccinations by residential location

First doses

Age	Today	4 weeks ago	8 weeks ago
16+	>95%	>95%	94.8%
50+	>95%	>95%	>95%
70+	>95%	>95%	>95%

Fully vaccinated

Age	Today	4 weeks ago	8 weeks ago
16+	94.4%	93.6%	92.0%
50+	>95%	>95%	>95%
70+	>95%	>95%	>95%



*Residential state may differ from the state in which a vaccine was administered

Commonwealth and Jurisdiction vaccine doses administered

Data as at:
27 Feb 2022



54,043,583 total vaccine doses administered nationally as at 27 February

+ **30,858** recorded in the last 24 hours



20,121,378

doses administered by state and territory facilities

+ **15,871**

recorded in the last 24 hours

NSW	Jurisdictions	Commonwealth
Cumulative	4,949,276	11,940,867
Daily increase	2,230	3,490

TAS	Jurisdictions	Commonwealth
Cumulative	583,558	616,082
Daily increase	795	241

VIC	Jurisdictions	Commonwealth
Cumulative	5,831,508	8,462,082
Daily increase	4,776	4,247

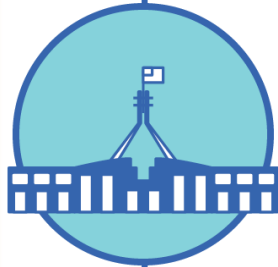
SA	Jurisdictions	Commonwealth
Cumulative	1,699,360	2,010,656
Daily increase	1,840	663

QLD	Jurisdictions	Commonwealth
Cumulative	3,707,378	6,575,959
Daily increase	835	1,609

ACT	Jurisdictions	Commonwealth
Cumulative	699,562	671,704
Daily increase	690	183

WA	Jurisdictions	Commonwealth
Cumulative	2,344,985	3,428,581
Daily increase	4,516	4,550

NT	Jurisdictions	Commonwealth
Cumulative	305,751	216,274
Daily increase	189	4



33,922,205

doses administered by commonwealth facilities

+ **14,987**

recorded in the last 24 hours

32,670,727 total vaccine doses administered in primary care settings

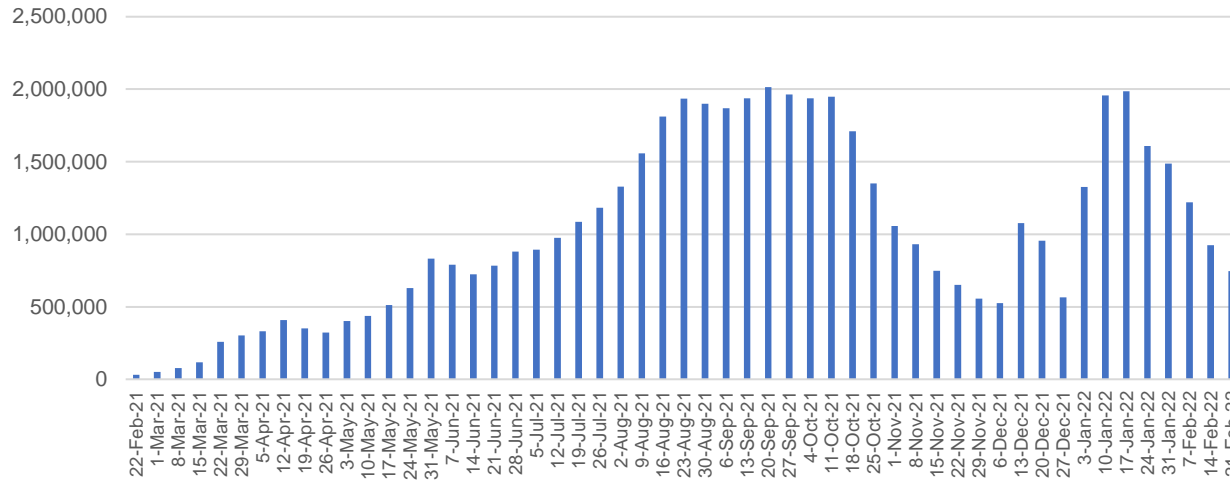
1,251,478 total vaccine doses administered in aged care and disability settings

Vaccine milestone charts

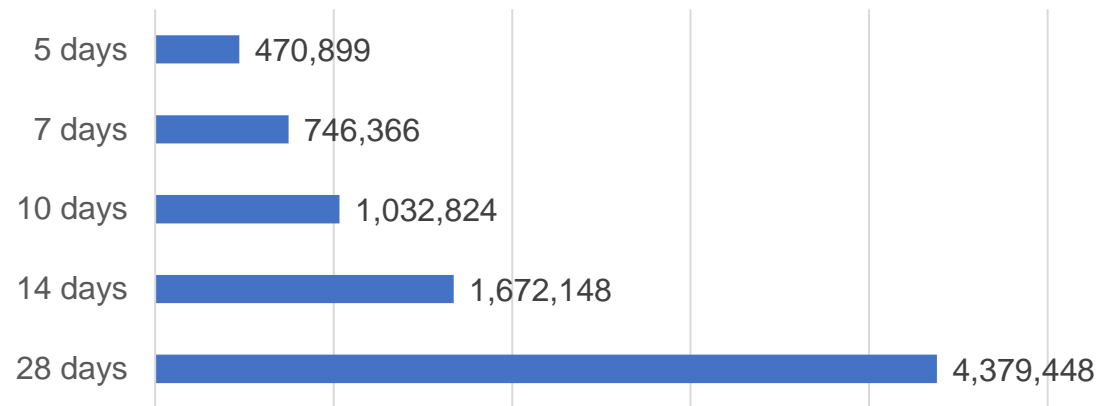
Data as at:
27 Feb 2022

Australia's COVID-19
Vaccine Roadmap

Doses Administered by Week

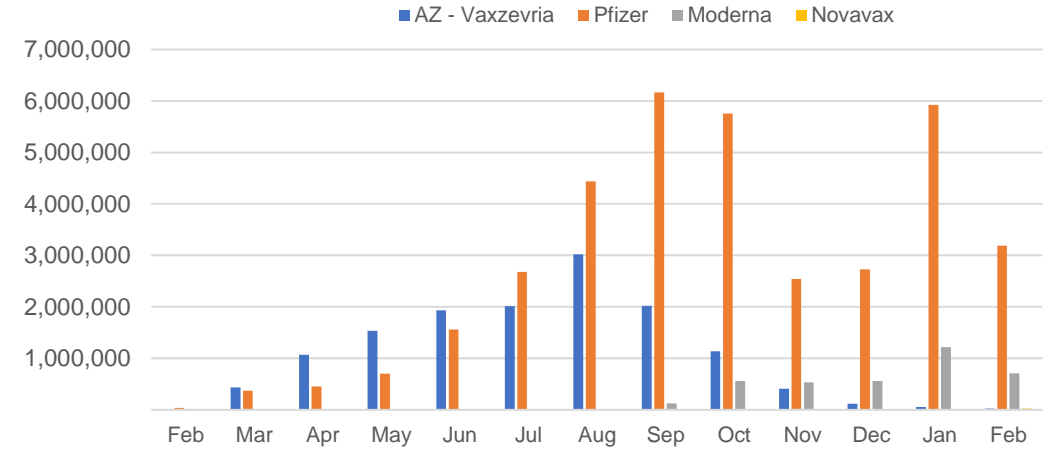


Doses Reported

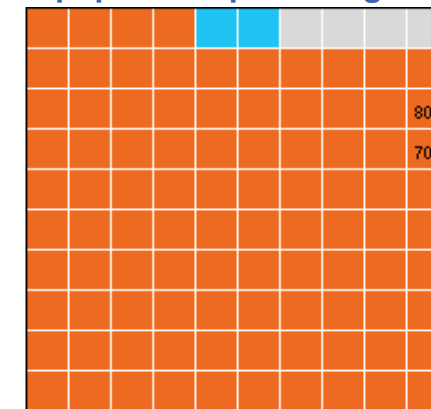


*Sourced from the Australian Immunisation Register.

Doses by administration month and vaccine type



Eligible population percentage coverage



1st dose: >95.0% 2nd dose: 94.4%

*Each square represents 1% of the national population. Squares are filled as milestones are achieved.

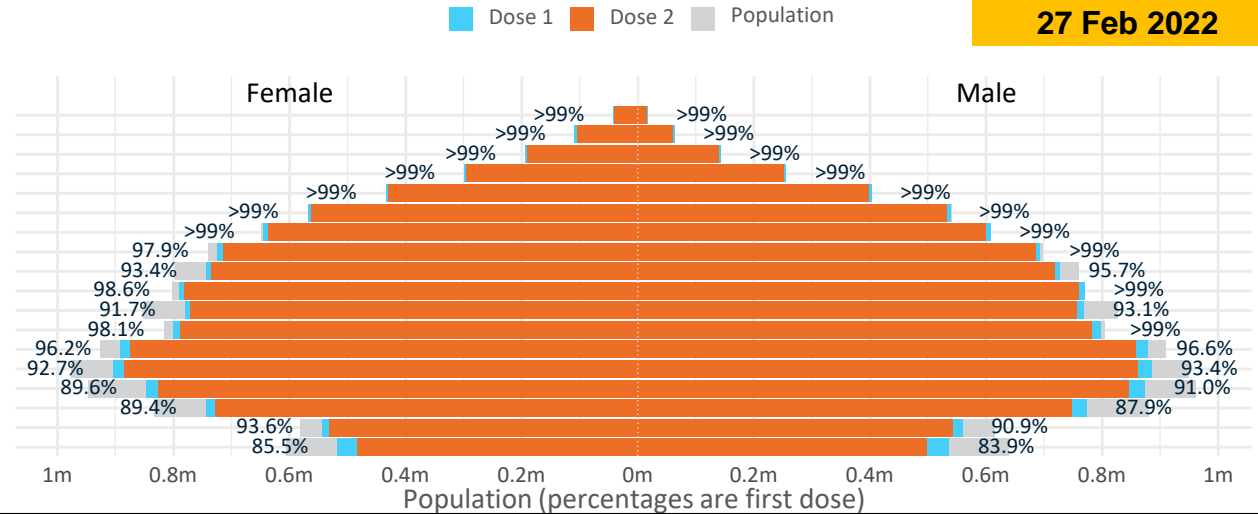
Doses by age and sex

First and second doses by age and sex

	16+	50+	12-15	5-11
Dose 1	96.29% (19,854,314 doses / 20,619,959 people)	>99% (8,772,129 doses / 8,749,703 people)	84.71% (1,053,748 doses / 1,243,990 people)	50.03% (1,139,089 doses / 2,276,638 people)
Dose 2	94.45% (19,474,877 doses / 20,619,959 people)	98.87% (8,651,029 doses / 8,749,703 people)	78.89% (981,325 doses / 1,243,990 people)	0.85% (19,436 doses / 2,276,638 people)

Data as at:
27 Feb 2022

Age	Dose 1	Dose 2
95+	58,452 (>99%)	54,946 (>99%)
90-94	172,001 (>99%)	165,842 (>99%)
85-89	336,590 (>99%)	328,672 (>99%)
80-84	554,592 (>99%)	546,139 (>99%)
75-79	836,978 (>99%)	827,310 (>99%)
70-74	1,107,721 (>99%)	1,095,317 (>99%)
65-69	1,253,475 (>99%)	1,237,785 (98.4%)
60-64	1,418,783 (98.8%)	1,400,632 (97.5%)
55-59	1,472,120 (94.6%)	1,453,321 (93.4%)
50-54	1,561,417 (>99%)	1,541,065 (98.5%)
45-49	1,550,524 (92.5%)	1,527,965 (91.1%)
40-44	1,600,461 (98.8%)	1,571,887 (97.0%)
35-39	1,773,795 (96.7%)	1,736,719 (94.6%)
30-34	1,798,531 (93.5%)	1,751,806 (91.1%)
25-29	1,731,489 (90.8%)	1,680,354 (88.1%)
20-24	1,523,770 (89.0%)	1,480,808 (86.5%)
16-19	1,103,615 (92.3%)	1,074,309 (89.8%)
12-15	1,053,748 (84.7%)	981,325 (78.9%)



	AUS	ACT	NSW	NT	QLD	SA	TAS	VIC	WA
16 and over - dose 1	19,854,314	350,672	6,288,227	173,800	3,816,623	1,362,490	441,185	5,126,623	2,065,411
16 and over - dose 2	19,474,877	345,364	6,193,465	168,428	3,736,895	1,325,744	430,467	5,050,992	2,011,733
16 and over - population	20,619,959*	344,037	6,565,651	190,571	4,112,707	1,440,400	440,172	5,407,574	2,114,978
16 and over % with dose 1	96.29%	>99%	95.77%	91.20%	92.80%	94.59%	>99%	94.80%	97.66%
16 and over % with dose 2	94.45%	>99%	94.33%	88.38%	90.86%	92.04%	97.80%	93.41%	95.12%
5 to 11 - dose 1	1,139,089	31,003	340,006	12,601	203,798	81,718	27,676	314,366	120,897
5 to 11 - dose 2	19,436	282	7,925	130	3,021	459	83	6,356	1,053
5 to 11 - population	2,276,638	39,789	716,460	24,750	478,731	148,816	45,033	578,499	244,154
5 to 11 % with dose 1	50.03%	77.92%	47.46%	50.91%	42.57%	54.91%	61.46%	54.34%	49.52%
5 to 11 % with dose 2	0.85%	0.71%	1.11%	0.53%	0.63%	0.31%	0.18%	1.10%	0.43%
12 to 15 - dose 1	1,053,748	20,072	326,234	10,902	207,796	68,213	22,845	276,090	112,357
12 to 15 - dose 2	981,325	19,135	308,510	9,615	191,134	63,257	21,275	261,360	99,110
12 to 15 - population	1,243,990	19,693	390,330	13,060	270,146	82,747	26,308	308,611	132,869
12 to 15 % with dose 1	84.71%	>99%	83.58%	83.48%	76.92%	82.44%	86.84%	89.46%	84.56%
12 to 15 % with dose 2	78.89%	97.17%	79.04%	73.62%	70.75%	76.45%	80.87%	84.69%	74.59%

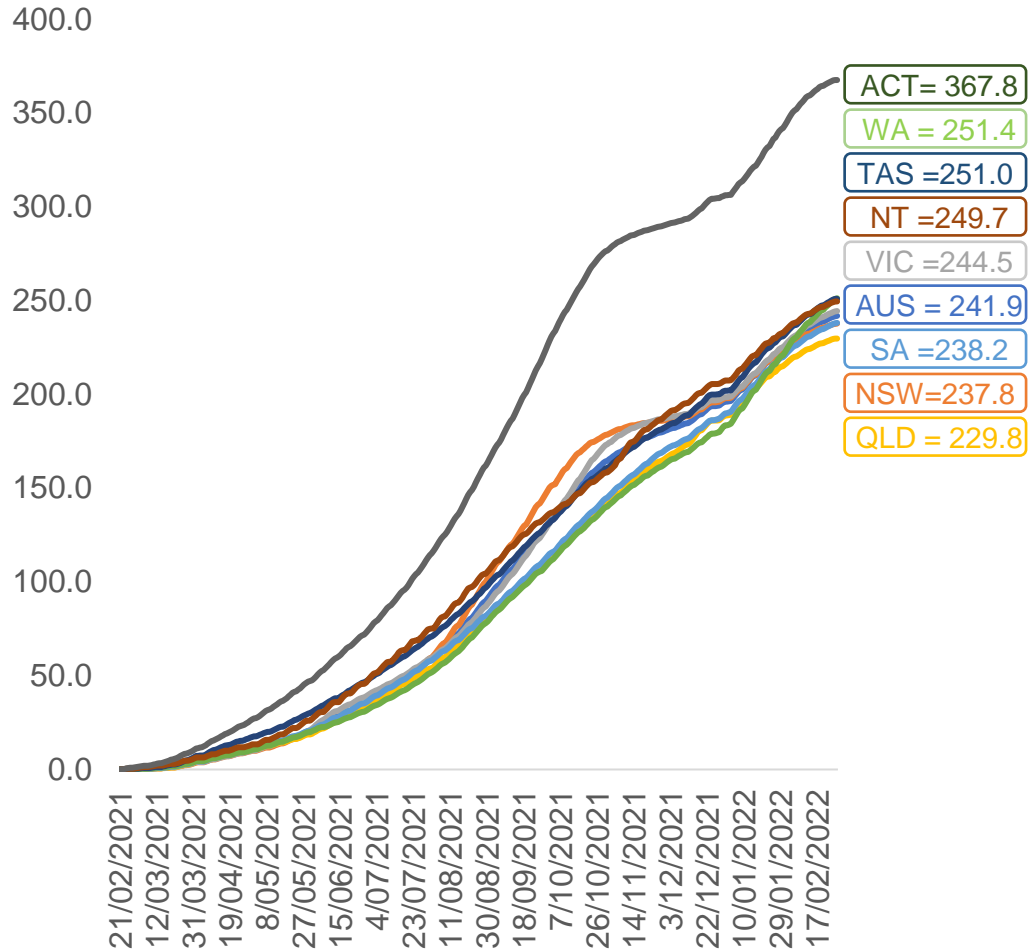
*National population will not equal sum of listed jurisdictions due to a small number of people counted in national population residing in some 'other' territories. Sum of state doses will not add to national total as some records are unable to be geocoded to a State or Territory. Doses sourced from Australian Immunisation Register, population from ABS ERP June 2020

Vaccinations by location

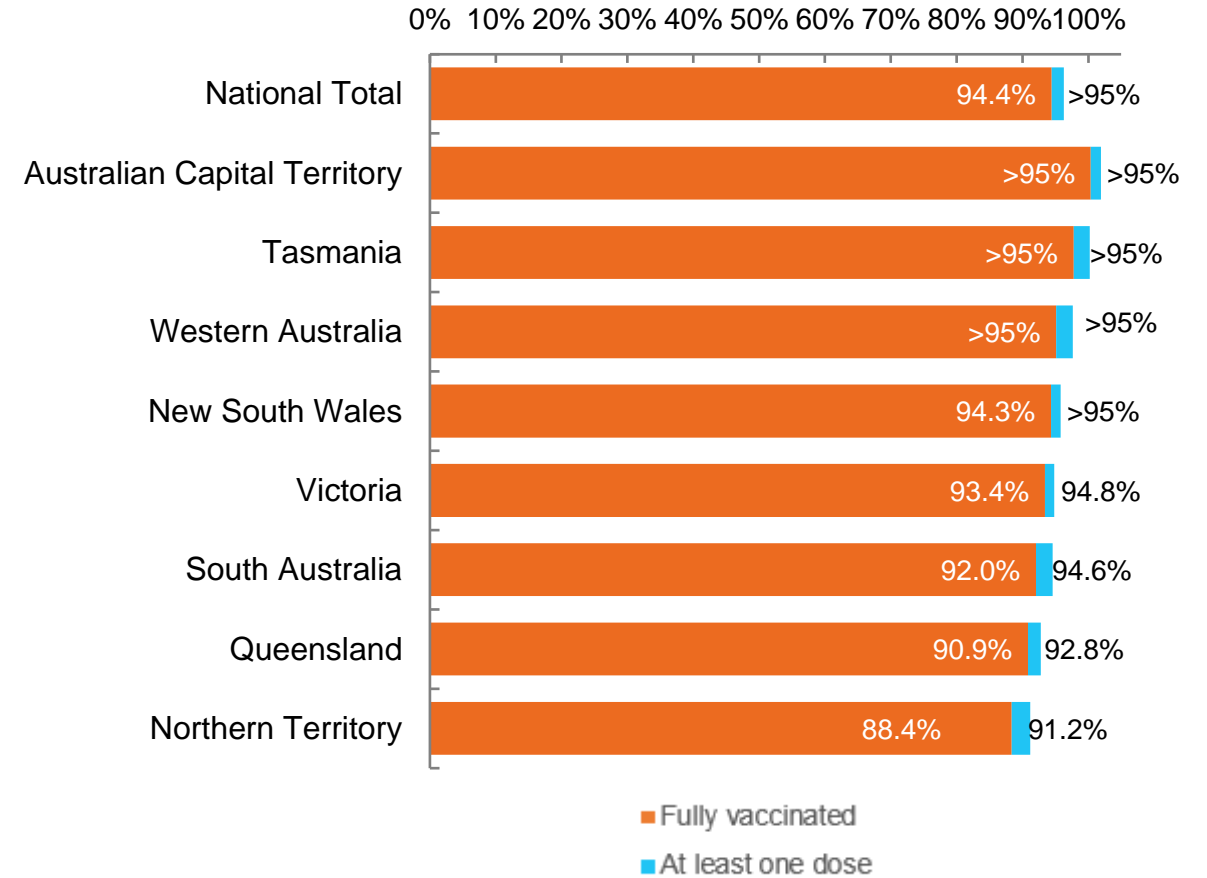
Data as at:
27 Feb 2022

Australia's COVID-19
Vaccine Roadmap

Cumulative total doses administered vs eligible state populations*



First and Second Doses by residential location



*Not an indication of percentage vaccinated, numbers will exceed 100 due to multiple doses required per person of the population. All doses are included for those aged 12 and above, and are based on vaccination provider location.

Aboriginal and Torres Strait Islander peoples

Number of people vaccinated

Data as at:
22 Feb 2022
Updated weekly

Australia's COVID-19
Vaccine Roadmap



431,220

people over the age of 16
have had at least one dose

83.1%

of people over the age of 16
have had at least one dose



405,102

people over the age of 16
are fully vaccinated

78.0%

of people over the age of 16 are
fully vaccinated



**47,614
(67.1%)**

people aged 12-15 years
have had at least one dose

176 Aboriginal community controlled health services (ACCHS)

0#	50	27	44	12	3	21	19
ACT	NSW	NT	QLD	SA	TAS	VIC	WA

Medicare Address State ^{##}	Individuals Dose 1	Individuals Dose 1 %	Individuals Dose 2	Individuals Dose 2 %
Australian Capital Territory	4,864	91.3%	4,727	88.7%
New South Wales	134,769	86.5%	131,329	84.3%
Northern Territory	41,851	88.5%	38,873	82.2%
Queensland	113,793	80.3%	106,457	75.1%
South Australia	19,552	78.4%	17,774	71.3%
Tasmania	14,101	88.0%	13,534	84.4%
Victoria	35,162	89.3%	34,237	86.9%
Western Australia	50,742	80.7%	43,986	70.0%
Unknown/Other Territories	16,386	63.4%	14,185	54.9%
Totals	431,220	83.1%	405,102	78.0%

Source: Australian Immunisation Register

*Identifying as Aboriginal and Torres Strait Islander is optional and the estimated population may be under reported.

**Includes all Aboriginal and Torres Strait Islander peoples who have received a vaccination, not limited to those administered in an ACCHS setting

#ACCHS in the ACT are currently operating as a Commonwealth Vaccine Clinics so not included to avoid double counting

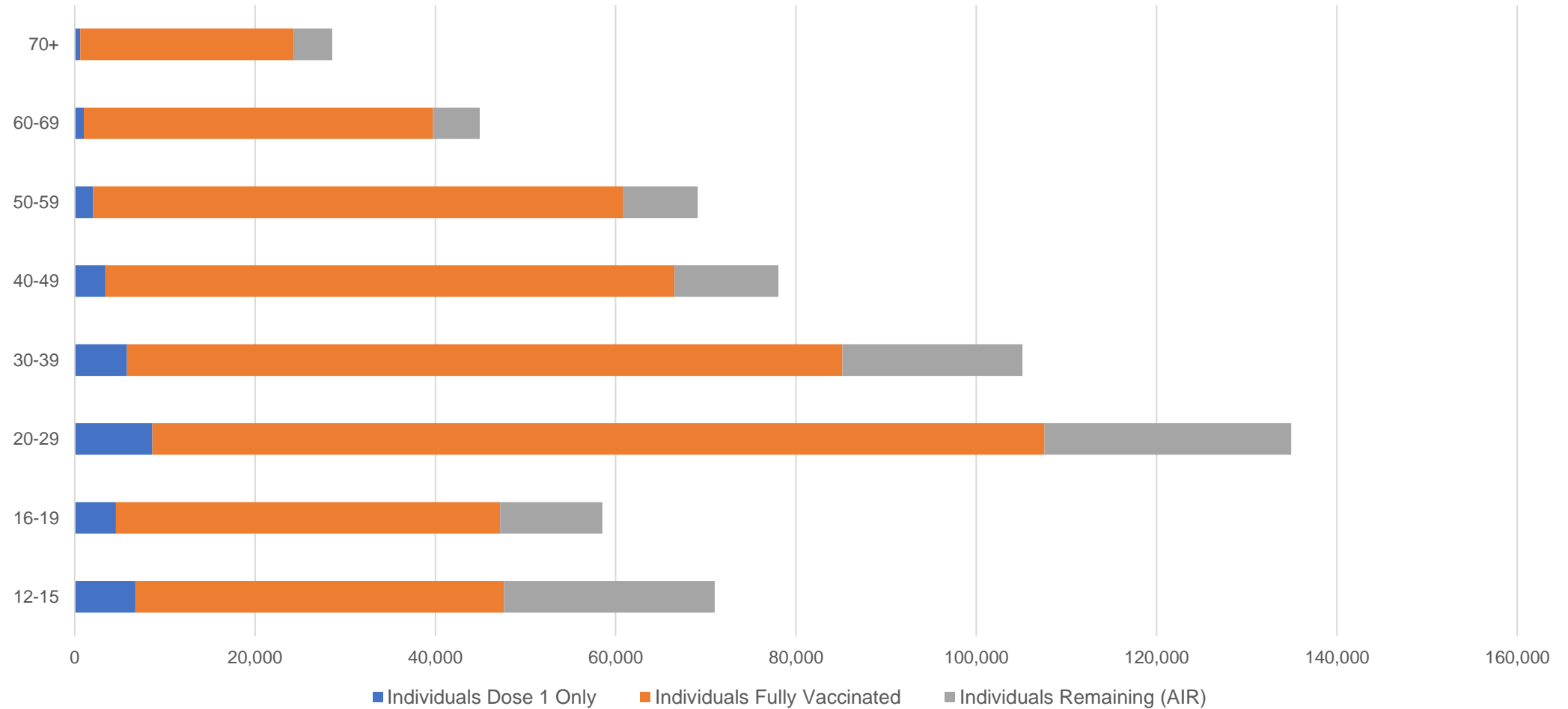
##The above table includes all identified Aboriginal and Torres Strait Islander people who are aged 16 and above by their state of residence.

Aboriginal and Torres Strait Islander peoples

Number of people vaccinated by age

Data as at:
22 Feb 2022
Updated weekly

Australia's COVID-19
Vaccine Roadmap



Source: Australian Immunisation Register

Commonwealth primary care

Data as at:
27 Feb 2022

Australia's COVID-19
Vaccine Roadmap



Primary care vaccine administration sites

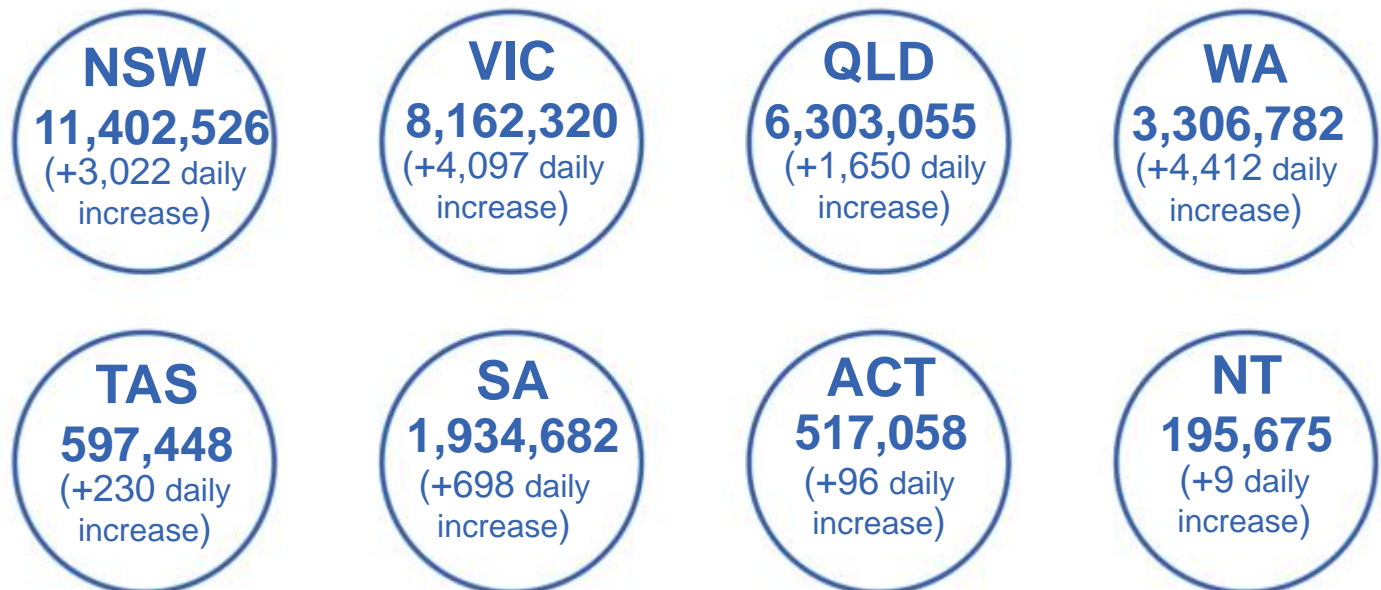
5,777	127	177	3,558
GPs	CVCs	ACCHS	Pharmacies



32,670,727 total vaccine doses administered
primary care settings as at 27 February
+ 14,768 recorded in the last 24 hours

Primary care vaccinations by provider type

	Doses administered	Daily increase	7 day increase
General Practice* includes other Commonwealth	26,709,610	9,082	368,274
Pharmacy	5,961,117	5,686	208,542



251,181

doses administered to persons residing in other territories or with missing residential information

*General practice includes Commonwealth Vaccination Clinics, Aboriginal Community Health Centres, Royal Flying Doctor Service and other Commonwealth vaccination facilities

Source: Australian Immunisation Register

Data as at:
27 Feb 2022

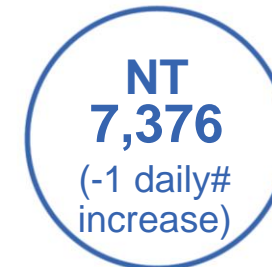
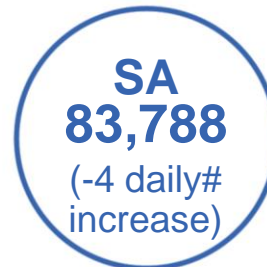
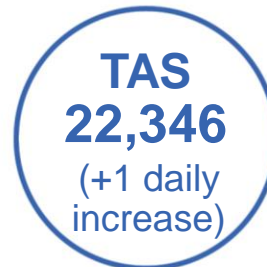
Commonwealth aged care and disability doses administered



1,251,478 (+ 219 last 24 hours)

Total vaccine doses administered in aged care and disability facilities as at 27 February

Number of doses administered as part of the Commonwealth aged and disability care rollout



32,227

doses administered to persons residing in other territories or with missing residential information

Source: Australian Immunisation Register

*Sourced from the Australian Immunisation Register. Includes all persons vaccinated at participating residential aged care, disability and related industry settings.

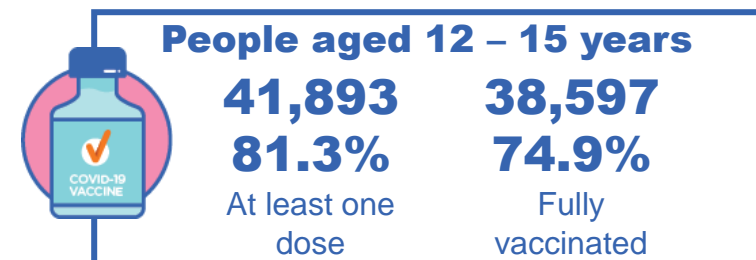
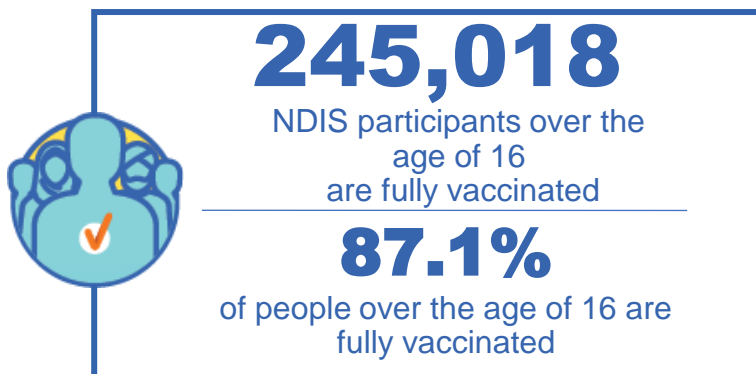
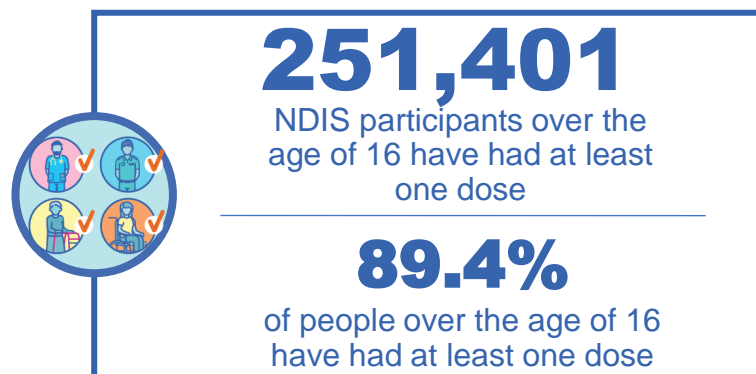
**State level breakdown indicates the residential location and may not align to the state in which the vaccination occurred.

Numbers are calculated as difference in daily cumulative reported numbers to allow for historical corrections in all data sources. This can occasionally result in negative numbers, such as for NSW, QLD, SA, ACT and NT, where historical details about doses have been updated.

National Disability Insurance Scheme (NDIS) reported vaccinations

Data as at:
24 February 2022
Updated weekly

Australia's COVID-19
Vaccine Roadmap



NDIS participant vaccinations

	People aged 16+ with at least one dose	People aged 16+ fully vaccinated	% People aged 16+ with at least one dose	% People aged 16+ fully vaccinated
ACT	4,794	4,722	91.2%	89.8%
NSW	77,732	76,391	89.6%	88.0%
NT	2,187	2,079	80.9%	76.9%
QLD	49,286	47,943	88.7%	86.2%
SA	20,438	19,706	87.1%	84.0%
TAS	6,293	6,077	89.4%	86.3%
VIC	67,084	65,746	90.4%	88.6%
WA	23,587	22,354	89.8%	85.1%
National	251,401	245,018	89.4%	87.1%

Source: Linkage between National Disability Insurance Agency data and the Australian Immunisation Register. Total NDIS participant numbers as at 17th October. Australian Immunisation Register data as at 23 February. Includes all participants regardless of residence type.

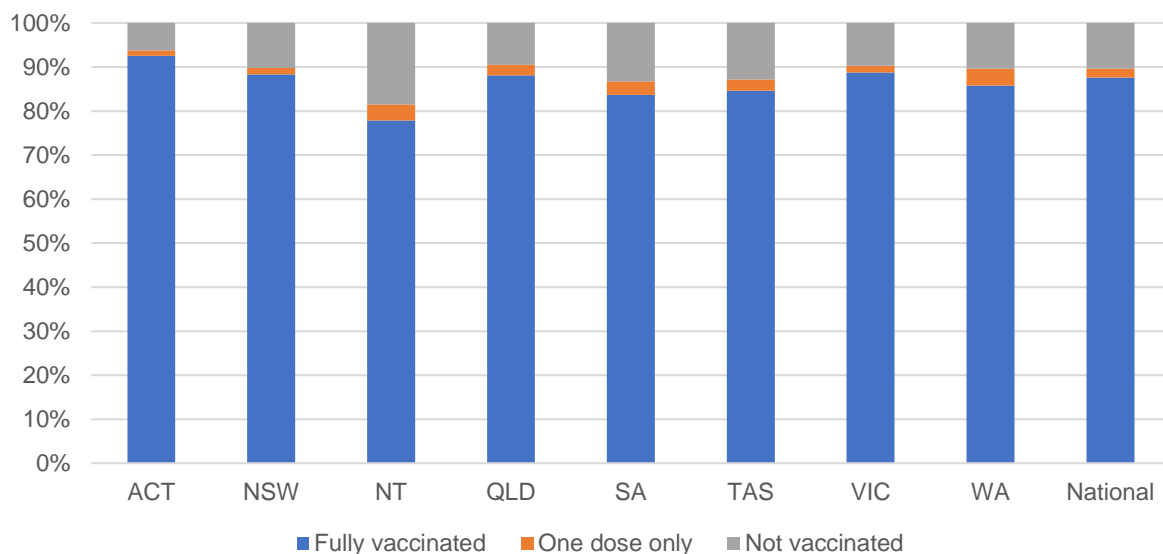
National Disability Insurance Scheme (NDIS) reported vaccinations

Data as at:
24 February 2022
Updated weekly

Australia's COVID-19
Vaccine Roadmap

NATIONAL	Total people with at least one dose	People fully vaccinated	Total number of individuals in cohort	% People with at least one dose	% People fully vaccinated
NDIS participants living in disability accommodation	20,562	20,115	22,800	90.2%	88.2%

NDIS participants in disability and aged care accommodation



Source: Linkage between National Disability Insurance Agency data and the Australian Immunisation Register. Includes participants residing in disability accommodation only.
Source: Total NDIS participant numbers as at 17th October. Participant data as at 23 February. Australian Immunisation Register data as at 23 February. Worker data as at 24 February.

NDIS workforce vaccinations

	NDIS workers with at least one dose	NDIS workers fully vaccinated	% NDIS workers with at least one dose	% NDIS workers fully vaccinated
NSW	120,272	119,703	97.6%	97.1%
VIC	106,884	105,292	98.0%	96.6%
QLD	67,644	66,591	97.2%	95.7%
WA	32,347	30,855	98.1%	93.6%
SA	34,573	33,378	97.6%	94.3%
TAS	10,711	10,574	99.5%	98.2%
ACT	3,528	3,501	99.5%	98.8%
NT	3,248	3,205	99.4%	98.1%
TOTAL	379,207	373,099	97.8%	96.2%

Source: the NDIS Commission has established a requirement for registered NDIS providers who provide intensive disability support services to report on the vaccination status of workers they employ, or otherwise engage, to deliver NDIS-funded supports and services, and who are required to be vaccinated in accordance with in-force state and territory public health orders. The statistics reflect data reported to the NDIS Commission by registered NDIS providers and should be considered indicative and subject to change

Note: Some registered NDIS providers are yet to report on the vaccination status of their workforce. The NDIS Commission is working with those providers around reporting requirements.

Remaining workers not included include those exempt from vaccination requirements, workers whose vaccination status is not yet verified by the provider (such as workers on leave) and provider reporting anomalies.

Residential aged care vaccination rollout

Residential aged care facilities status

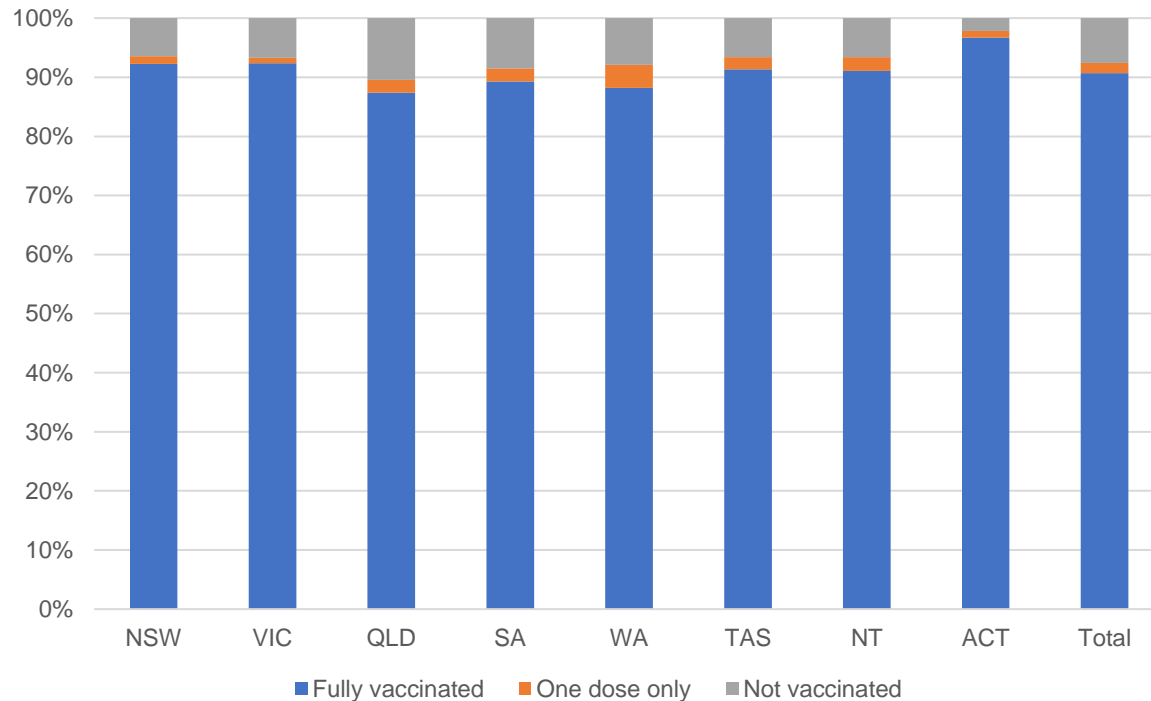
100%
Commonwealth facilities visited (2,541 planned sites)

172,710
People fully vaccinated

175,975
People with at least one dose

Data as at:
24 Feb 2022
Updated weekly

Aged care resident vaccinations



Aged care worker vaccinations

Jurisdictions	Total workers with at least one dose	Workers fully vaccinated	% Workers with at least one dose	% Workers fully vaccinated
NSW	78,672	78,654	99.2%	99.2%
VIC	69,348	69,283	98.9%	98.8%
QLD	48,822	48,819	99.0%	99.0%
SA	26,976	26,947	98.4%	98.3%
WA	23,800	23,797	99.1%	99.1%
TAS	7,615	7,615	99.3%	99.3%
NT	878	878	100.0%	100.0%
ACT	3,031	3,031	100.0%	100.0%
Total	259,142	259,024	99.0%	99.0%

Source: My Aged Care Portal vaccination progress

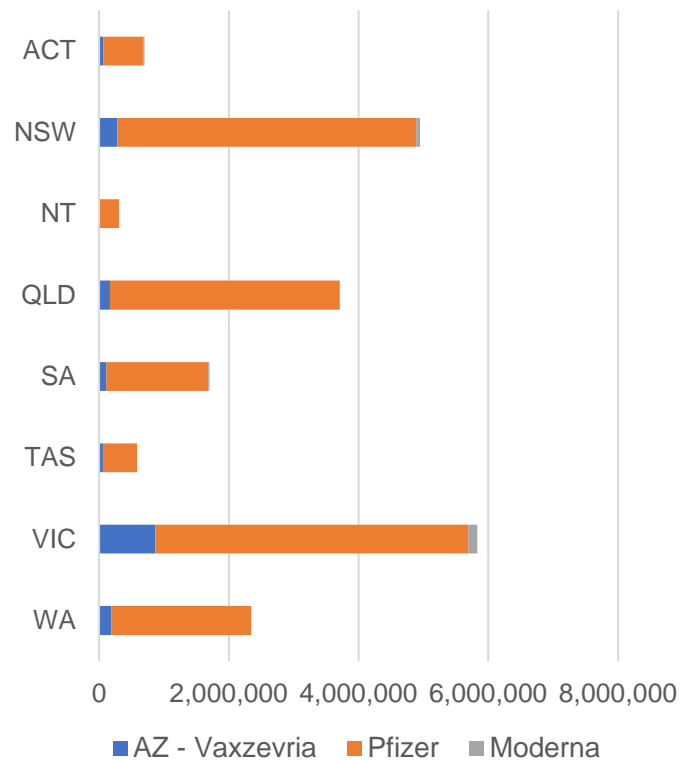
*Status updates are provided by facilities at least once per week. Reporting is updated Monday to Friday to encompass different facility updates being made on different days.

Data is sourced directly from Aged Care Service Providers and is not drawn or closely aligned with data from AIR due to inconsistencies and potential lags in uploading of records.

Data as at:
27 Feb 2022

Jurisdiction administered

Total vaccine doses administered in State and Territory clinics as at 27 February



20,121,378 total vaccine doses administered in State and Territory clinics as at 27 February
 + **15,871** recorded in the last 24 hours
 + **169,055** recorded in the last 7 days

NSW
4,949,276
 (+2,230 daily increase)

VIC
5,831,508
 (+4,776 daily increase)

QLD
3,707,378
 (+835 daily increase)

WA
2,344,985
 (+4,516 daily increase)

TAS
583,558
 (+795 daily increase)

SA
1,699,360
 (+1,840 daily increase)

ACT
699,562
 (+690 daily increase)

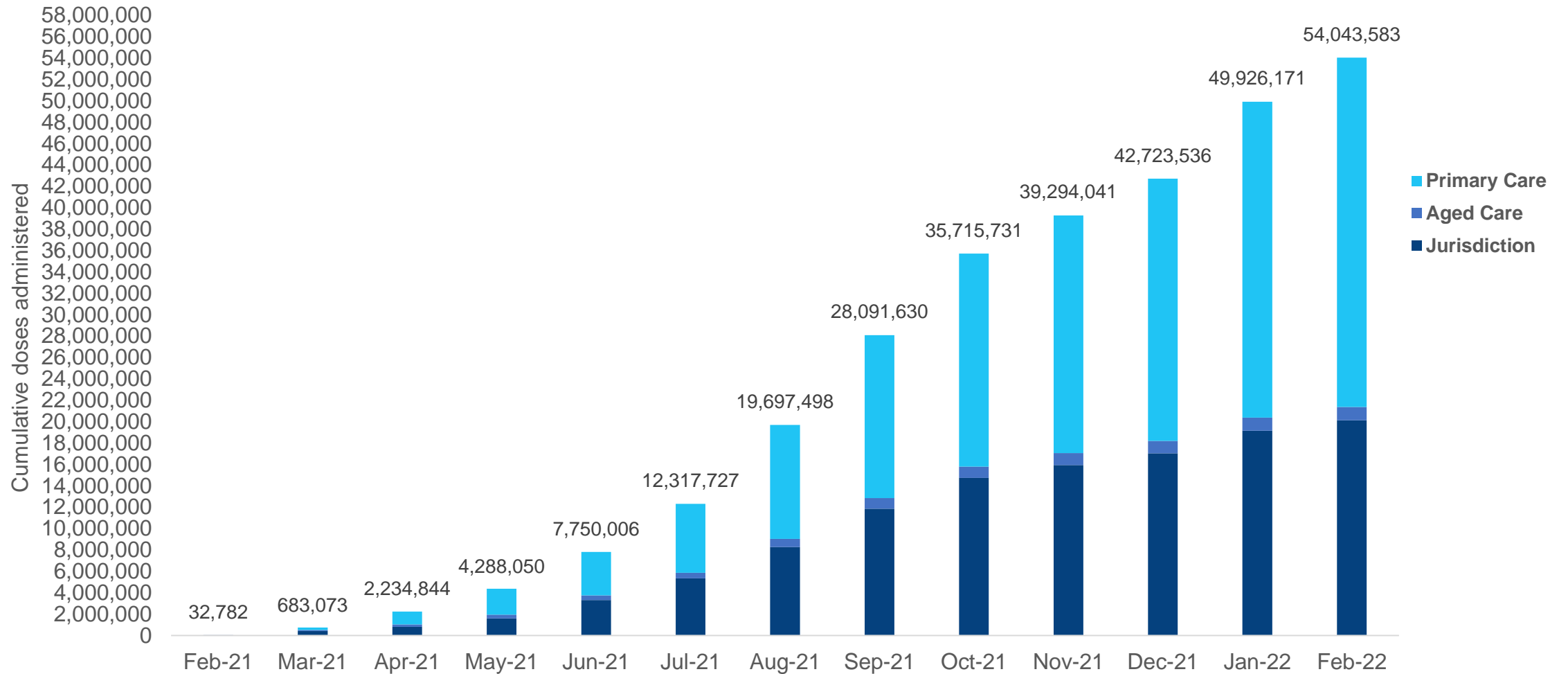
NT
305,751
 (+189 daily increase)

*Sourced from the Australian Immunisation Register. Numbers are calculated as difference in daily cumulative reported numbers to allow for historical corrections.

Source: Australian Immunisation Register

Data as at:
27 Feb 2022

Cumulative doses administered by channel



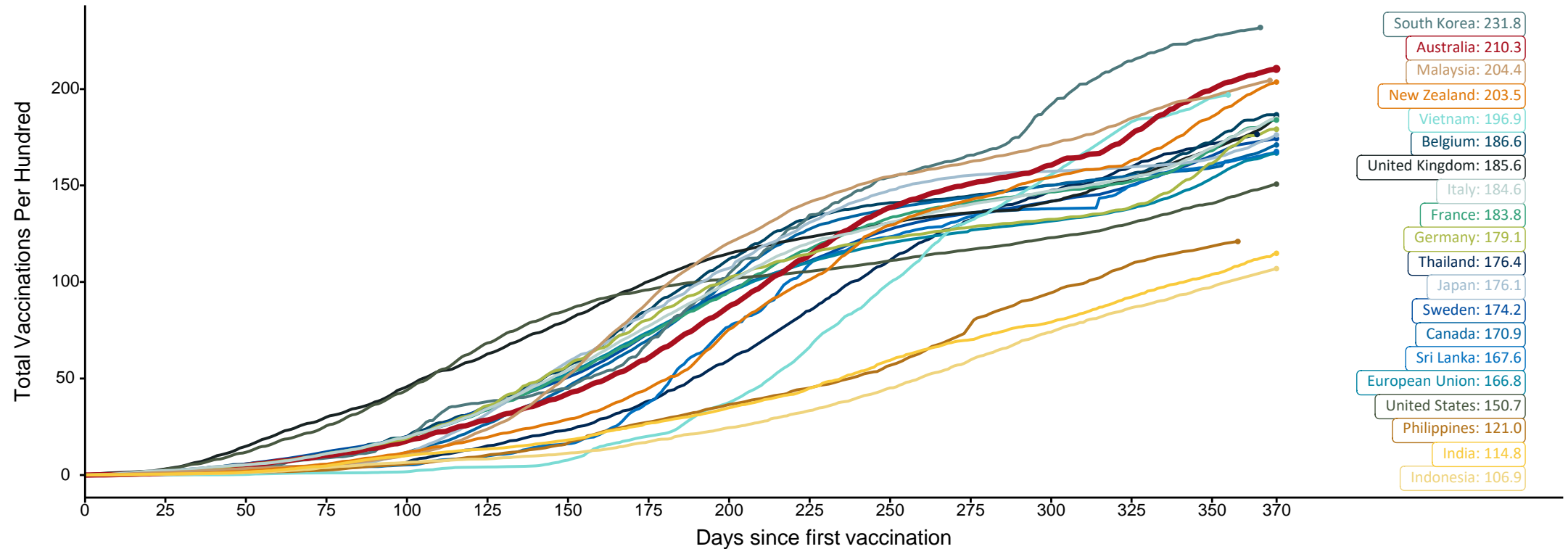
Source: Australian Immunisation Register

Doses at equivalent stages of rollout (Day 370)

Data as at:
27 Feb 2022

The x-axis is truncated at the length of Australia's vaccination program. Countries with intermittent reporting have had their doses per 100 imputed to Australia's current stage of rollout. Israel excluded as it is beyond scale of the graph

Cumulative doses administered (27 Feb): **54,043,583**

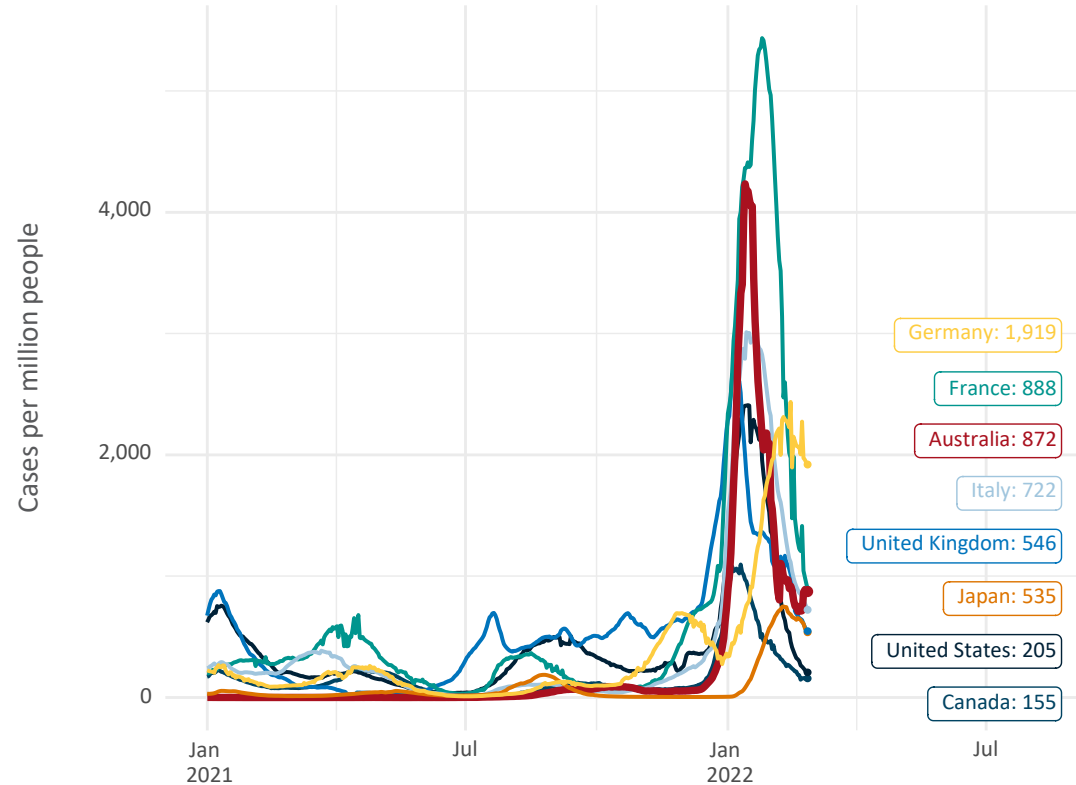


Note: From 15 September 2021, data for Australia includes all doses administered to people 12 and over. Prior to 15 September, data was for 16 and over
 Due to data revisions, Singapore has been removed from the chart
 Source: Department of Health (Australia), Our World in Data (international)
 Latest data: 27 February

Data as at:
27 Feb 2022

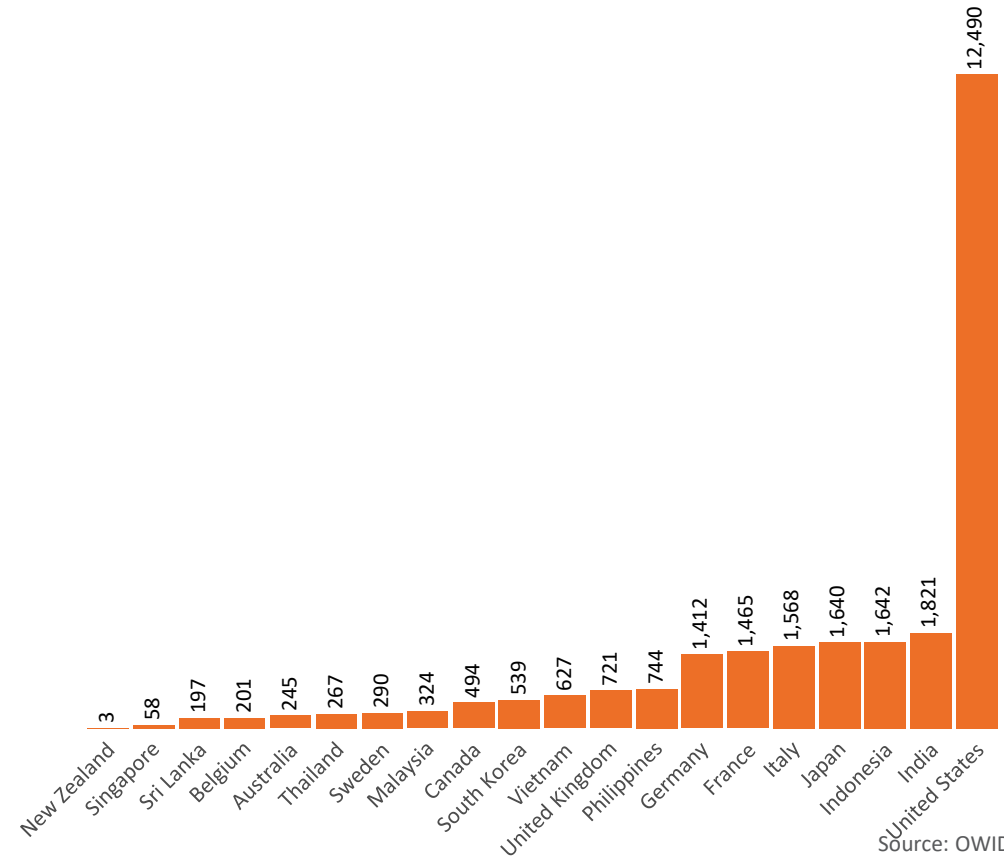
International data – COVID-19

New daily cases per million in 2021, Australia and G7 countries
Smoothed - 7 day average



Source: OWID
Data downloaded: 28 Feb 2022 07:50
Latest data: 26 Feb 2022

COVID-19 deaths in past 7 days - Australia and select countries



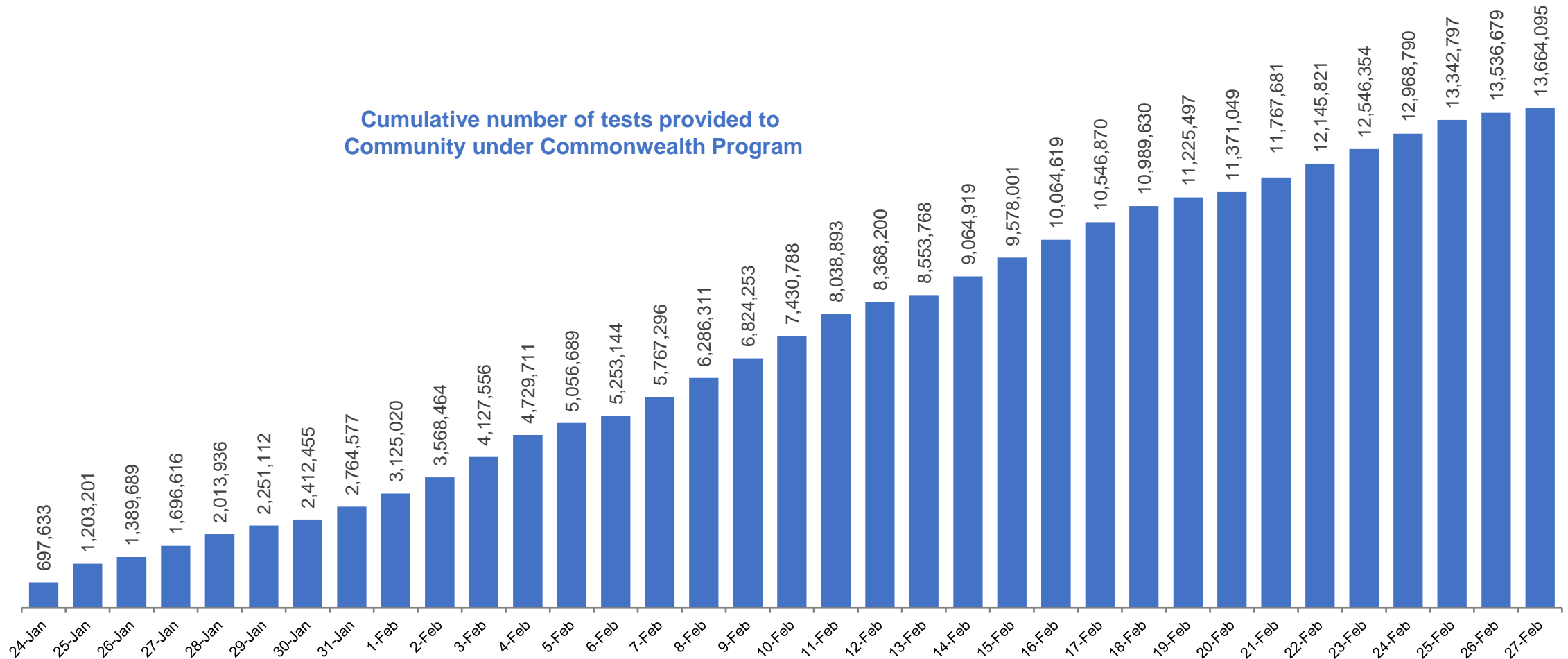
Source: OWID
Data downloaded: 28 Feb 2022 07:51
Latest data: 26 Feb 2022

Concessional rapid antigen test program

5,539 pharmacies have delivered over **13.6 million rapid antigen tests** to over **2.9m eligible concession card holders** under the Government's concessional rapid antigen test program.


Data as at
27 Feb 2022

Cumulative number of tests provided to
Community under Commonwealth Program



Pandemic Response Payments

Data as at midnight: 27 Feb 2022
Updated weekly



2.38 million
People have received at least one COVID Disaster Payment (including ISP200)

\$13.70 billion
Paid Out as at 27 Feb 2022

6.96 million
Claims granted across three different payments



92%
of Claims Received Digitally



COVID Disaster Payment:	5.89 million claims received - 2.19 million individuals paid a total of \$12.59 billion.
\$200 Income Support Payment:	353,000 claims received - 183,000 individuals paid a total of \$268.9 million.
Pandemic Leave Disaster Payment:	1,163,000 claims received - 752,000 individuals paid a total of \$837.1 million.



THREE PAYMENTS AVAILABLE

COVID Disaster Payment

assisting during a lockdown event in a Commonwealth hotspot.

Income Support Payment \$200

for income support recipients who lost at least 8 hours of work.

Pandemic Leave Disaster Payment

for those who have to self-isolate, quarantine or care.

For more information visit: servicesaustralia.gov.au

COVID-19 DISASTER PAYMENTS

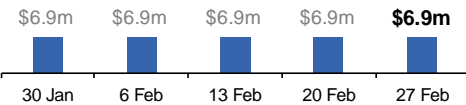
Northern Territory
Lockdown (#3) from 16 Nov to 22 Nov
Claiming period ended 27 Dec

7,500 people have received at least one COVID Disaster Payment.

\$6.9m paid out as at 27 Feb 2022.

\$0 paid in initial payments in the week ending 27 Feb 2022.

Cumulative payments made by Territory since activation on 25 Aug 2021.



Date	Cumulative Payments
30 Jan	\$6.9m
6 Feb	\$6.9m
13 Feb	\$6.9m
20 Feb	\$6.9m
27 Feb	\$6.9m

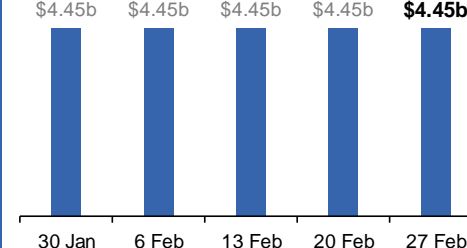
Victoria
Lockdown (#6) from 6 Aug to 28 Oct
Claiming period ended 9 Dec

745,000 people have received at least one COVID Disaster Payment.

\$4.45b paid out as at 27 Feb 2022.

\$0 paid in initial and reoccurring payments in the week ending 27 Feb 2022.

Cumulative payments made by State since activation on 8 Jun 2021.



Date	Cumulative Payments
30 Jan	\$4.45b
6 Feb	\$4.45b
13 Feb	\$4.45b
20 Feb	\$4.45b
27 Feb	\$4.45b

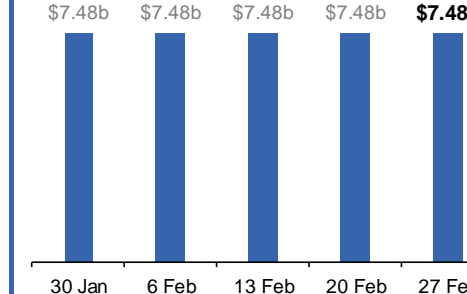
New South Wales
Lockdown from 24 Jun to 10 Oct
Claiming period ended 27 Nov

1.08m people have received at least one COVID Disaster Payment.

\$7.48b paid out as at 27 Feb 2022.

\$0 paid in initial and reoccurring payments in the week ending 27 Feb 2022.

Cumulative payments made by State since activation on 1 Jul 2021.



Date	Cumulative Payments
30 Jan	\$7.48b
6 Feb	\$7.48b
13 Feb	\$7.48b
20 Feb	\$7.48b
27 Feb	\$7.48b

Australian Capital Territory
Lockdown from 12 Aug to 14 Oct
Claiming period ended 25 Nov

65,000 people have received at least one COVID Disaster Payment.

\$344.7m paid out as at 27 Feb 2022.

\$0 paid in initial and reoccurring payments in the week ending 27 Feb 2022.

Cumulative payments made by Territory since activation on 20 Aug 2021.



Date	Cumulative Payments
30 Jan	\$344.7m
6 Feb	\$344.7m
13 Feb	\$344.7m
20 Feb	\$344.7m
27 Feb	\$344.7m

Pandemic Response Payments (continued)

Data as at midnight: 27 Feb 2022
Updated weekly

COVID-19 DISASTER PAYMENTS

