



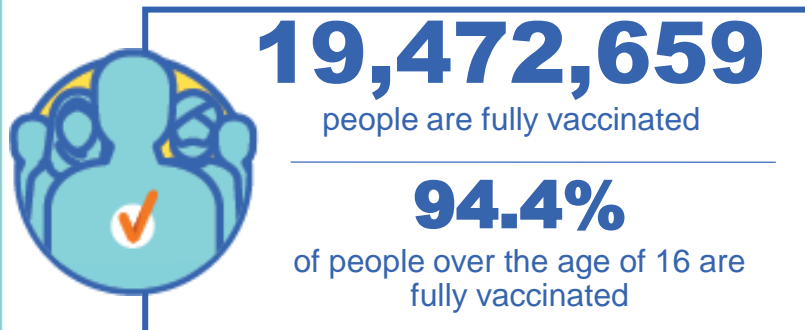
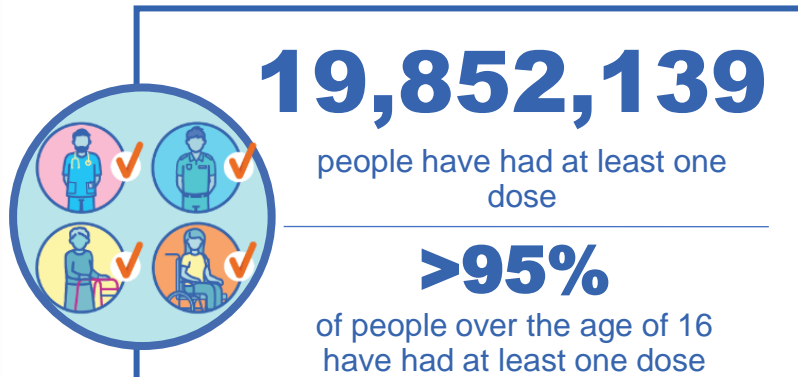
**Australian Government**  
**Operation COVID Shield**

# COVID-19 Vaccine Roll-out

27 February 2022

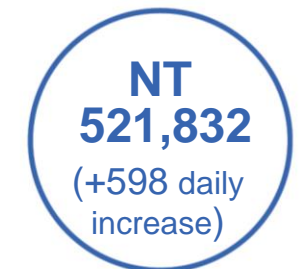
Data as at:  
26 Feb 2022

## Total vaccine doses



**54,012,725** total vaccine  
doses administered nationally as at 26 February

**+67,202** recorded in the last 24 hours



\*Administration state breakdown indicates state in which a vaccine was administered

\*\*Overall dose count includes instances of more than two doses per person in a small number of cases.

Source: Australian Immunisation Register

# Booster Vaccinations

Australia's COVID-19  
Vaccine Roadmap

Data as at:  
26 Feb 2022



**154,690**

Indigenous people who have  
received more than two doses

**48.2%**

of eligible population (321,082)



**153,826**

Aged Care Residents who have  
received more than two doses##

**89.1%**

of eligible population (172,710)



**148,491**

NDIS participants

who have received more than two doses#

**66.0%**

of eligible population  
(224,986)

**18,530**

NDIS residents

**80.5%**

of eligible population  
(23,019)



**11,415,349**

total people who  
have received more than two doses nationally

**+54,306** recorded in the last 24 hours

**63.4%** of people who are eligible (18,016,418)  
have received more than two doses

NSW	People	% of Eligible
Cumulative	3,549,424	58.3%
Daily increase	12,196	

VIC	People	% of Eligible
Cumulative	3,113,792	63.3%
Daily increase	15,630	

QLD	People	% of Eligible
Cumulative	1,990,740	62.7%
Daily increase	6,061	

WA	People	% of Eligible
Cumulative	1,295,131	80.3%
Daily increase	12,613	

SA	People	% of Eligible
Cumulative	806,550	69.3%
Daily increase	4,213	

TAS	People	% of Eligible
Cumulative	251,171	65.1%
Daily increase	1,259	

ACT	People	% of Eligible
Cumulative	236,897	69.7%
Daily increase	1,197	

NT	People	% of Eligible
Cumulative	91,088	62.8%
Daily increase	456	

**80,556**

doses administered to persons  
residing in other territories or with  
missing residential information

\*People may belong to multiple groups and could be represented in the above breakdowns multiple times.

# NDIS participants data as at 23 February 2022.

## Aged Care Residents data as at 24 February 2022.

Source: Australian Immunisation Register

# Vaccinations by residential location

Australia's COVID-19  
Vaccine Roadmap

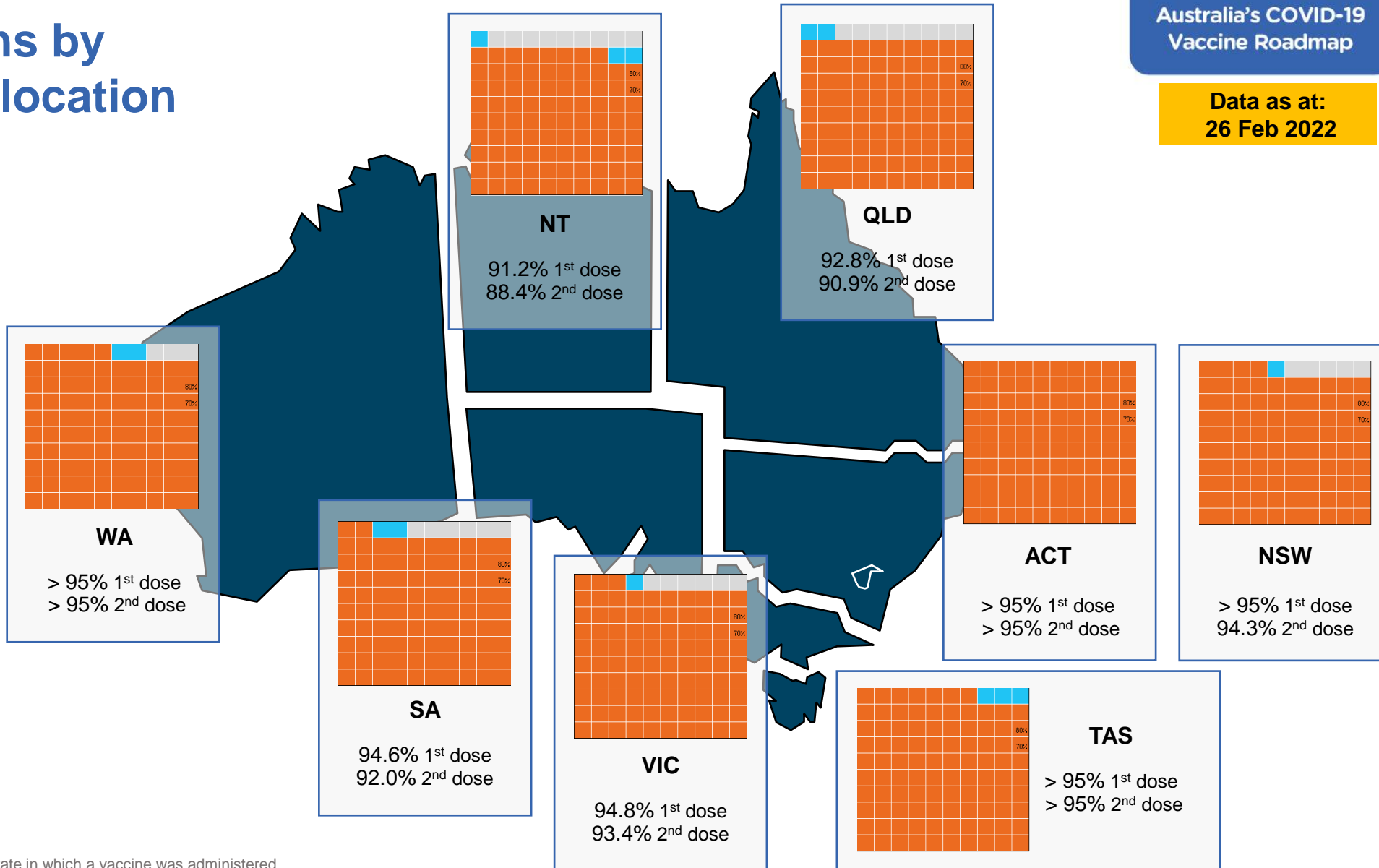
Data as at:  
26 Feb 2022

## First doses

Age	Today	4 weeks ago	8 weeks ago
16+	>95%	>95%	94.8%
50+	>95%	>95%	>95%
70+	>95%	>95%	>95%

## Fully vaccinated

Age	Today	4 weeks ago	8 weeks ago
16+	94.4%	93.5%	91.9%
50+	>95%	>95%	>95%
70+	>95%	>95%	>95%



\*Residential state may differ from the state in which a vaccine was administered

# Commonwealth and Jurisdiction vaccine doses administered

Data as at:  
26 Feb 2022



**54,012,725** total vaccine  
doses administered nationally as at 26 February  
**+ 67,202** recorded in the last 24 hours



**20,105,507**  
doses administered by state  
and territory facilities  
**+ 25,529**  
recorded in the last 24 hours

NSW	Jurisdictions	Commonwealth
Cumulative	4,947,046	11,937,377
Daily increase	3,812	10,526

TAS	Jurisdictions	Commonwealth
Cumulative	582,763	615,841
Daily increase	503	942

VIC	Jurisdictions	Commonwealth
Cumulative	5,826,732	8,457,835
Daily increase	6,916	11,518

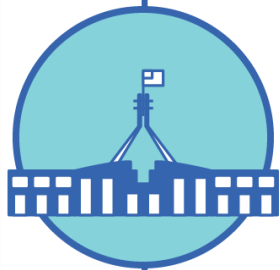
SA	Jurisdictions	Commonwealth
Cumulative	1,697,520	2,009,993
Daily increase	2,934	2,542

QLD	Jurisdictions	Commonwealth
Cumulative	3,706,543	6,574,350
Daily increase	2,732	4,963

ACT	Jurisdictions	Commonwealth
Cumulative	698,872	671,521
Daily increase	1,491	888

WA	Jurisdictions	Commonwealth
Cumulative	2,340,469	3,424,031
Daily increase	6,612	10,225

NT	Jurisdictions	Commonwealth
Cumulative	305,562	216,270
Daily increase	529	69



**33,907,218**  
doses administered by  
commonwealth facilities  
**+ 41,673**  
recorded in the last 24 hours

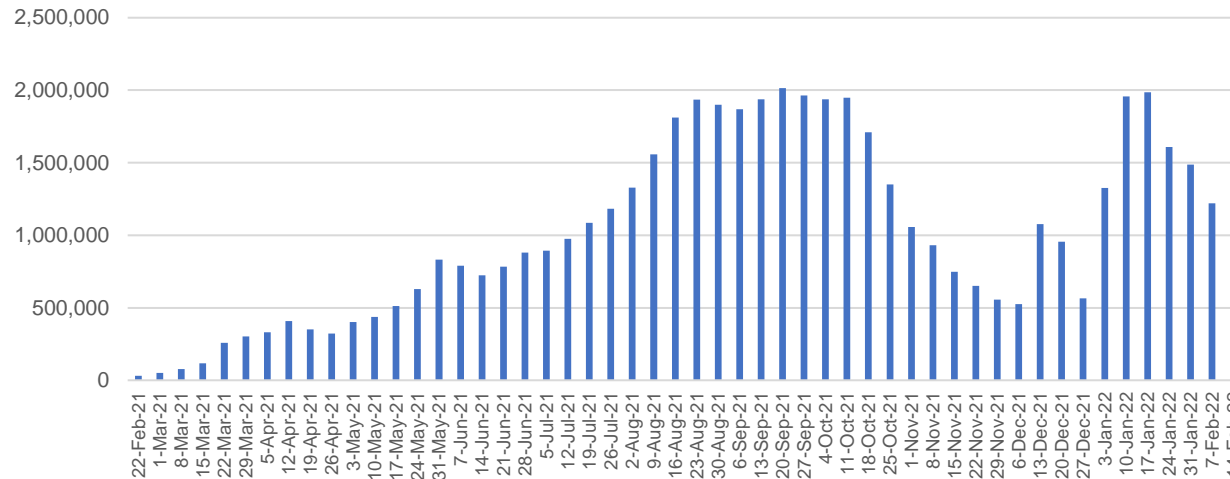
**32,655,959** total vaccine doses  
administered in primary care settings  
**1,251,259** total vaccine doses  
administered in aged care and disability  
settings

# Vaccine milestone charts

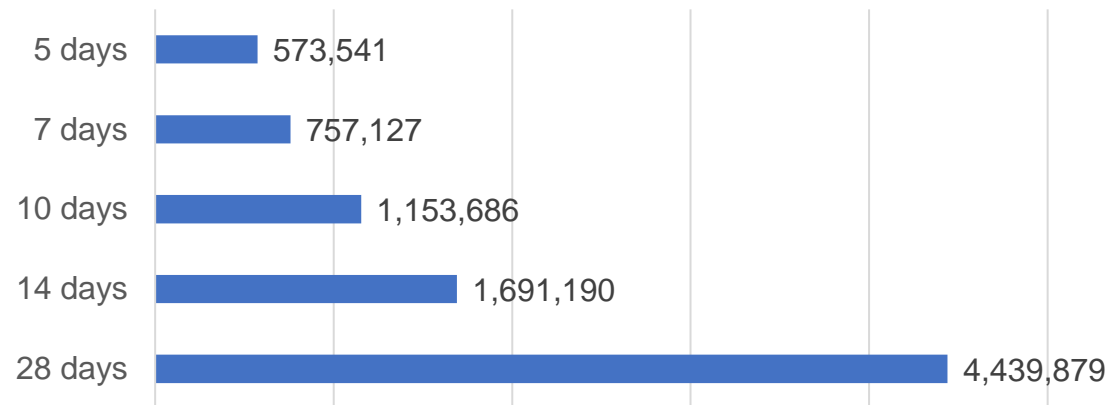
Data as at:  
26 Feb 2022

Australia's COVID-19  
Vaccine Roadmap

Doses Administered by Week

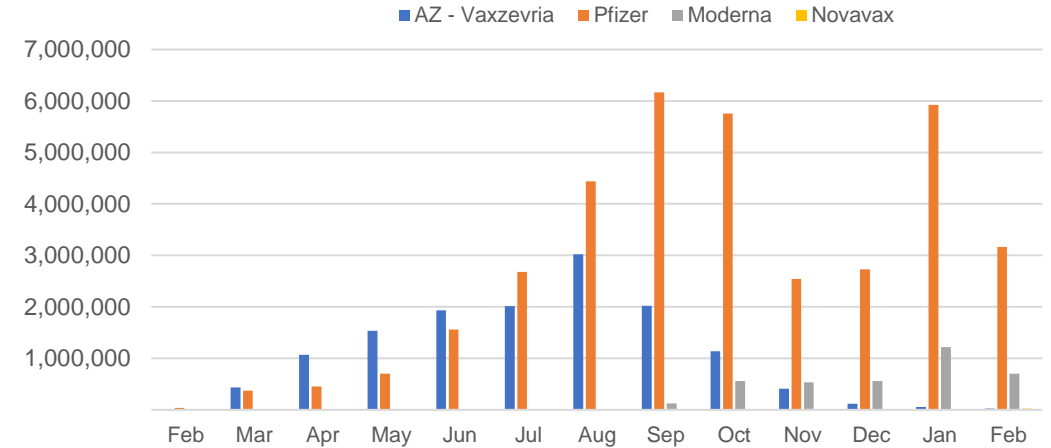


Doses Reported

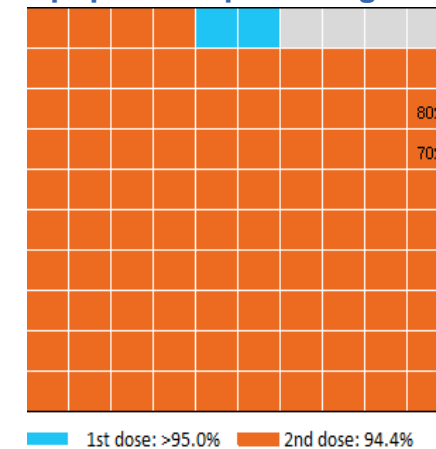


\*Sourced from the Australian Immunisation Register.

Doses by administration month and vaccine type



Eligible population percentage coverage



\*Each square represents 1% of the national population.  
Squares are filled as milestones are achieved.

# Doses by age and sex

First and second doses by age and sex

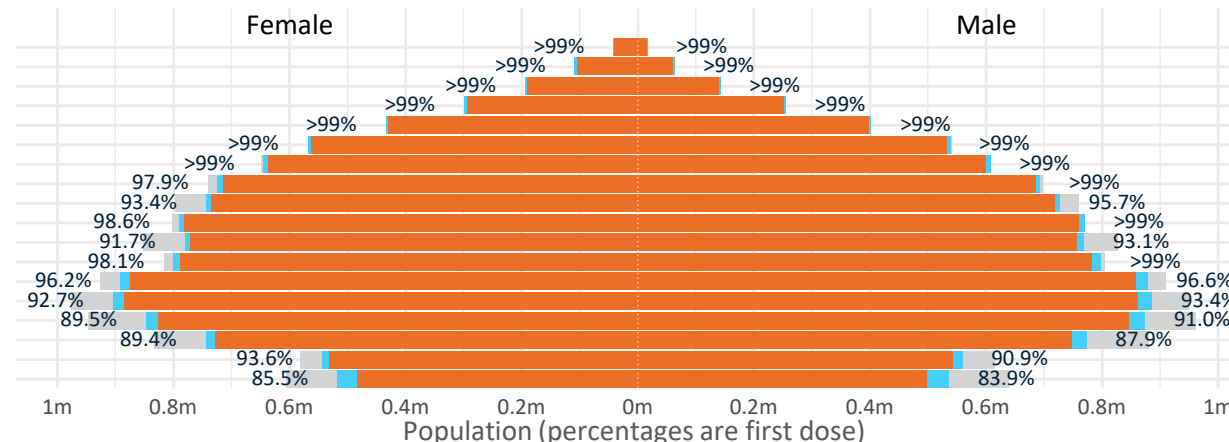
Australia's COVID-19  
Vaccine Roadmap

Data as at:  
26 Feb 2022

Age	Dose 1	Dose 2
95+	58,391 (>99%)	54,887 (>99%)
90-94	171,934 (>99%)	165,771 (>99%)
85-89	336,446 (>99%)	328,527 (>99%)
80-84	554,399 (>99%)	545,929 (>99%)
75-79	836,777 (>99%)	827,112 (>99%)
70-74	1,107,677 (>99%)	1,095,274 (>99%)
65-69	1,253,329 (>99%)	1,237,646 (98.4%)
60-64	1,418,592 (98.7%)	1,400,456 (97.5%)
55-59	1,472,084 (94.6%)	1,453,304 (93.4%)
50-54	1,561,281 (>99%)	1,540,938 (98.5%)
45-49	1,550,519 (92.5%)	1,527,967 (91.1%)
40-44	1,600,414 (98.8%)	1,571,807 (97.0%)
35-39	1,773,582 (96.7%)	1,736,484 (94.6%)
30-34	1,798,182 (93.5%)	1,751,479 (91.0%)
25-29	1,731,378 (90.8%)	1,680,277 (88.1%)
20-24	1,523,652 (89.0%)	1,480,677 (86.5%)
16-19	1,103,502 (92.3%)	1,074,124 (89.8%)
12-15	1,054,099 (84.7%)	981,573 (78.9%)

	16+	50+	12-15	5-11
Dose 1	<b>96.28%</b> (19,852,139 doses / 20,619,959 people)	<b>&gt;99%</b> (8,770,910 doses / 8,749,703 people)	<b>84.74%</b> (1,054,099 doses / 1,243,990 people)	<b>49.98%</b> (1,137,873 doses / 2,276,638 people)
Dose 2	<b>94.44%</b> (19,472,659 doses / 20,619,959 people)	<b>98.86%</b> (8,649,844 doses / 8,749,703 people)	<b>78.91%</b> (981,573 doses / 1,243,990 people)	<b>0.84%</b> (19,111 doses / 2,276,638 people)

■ Dose 1 ■ Dose 2 ■ Population



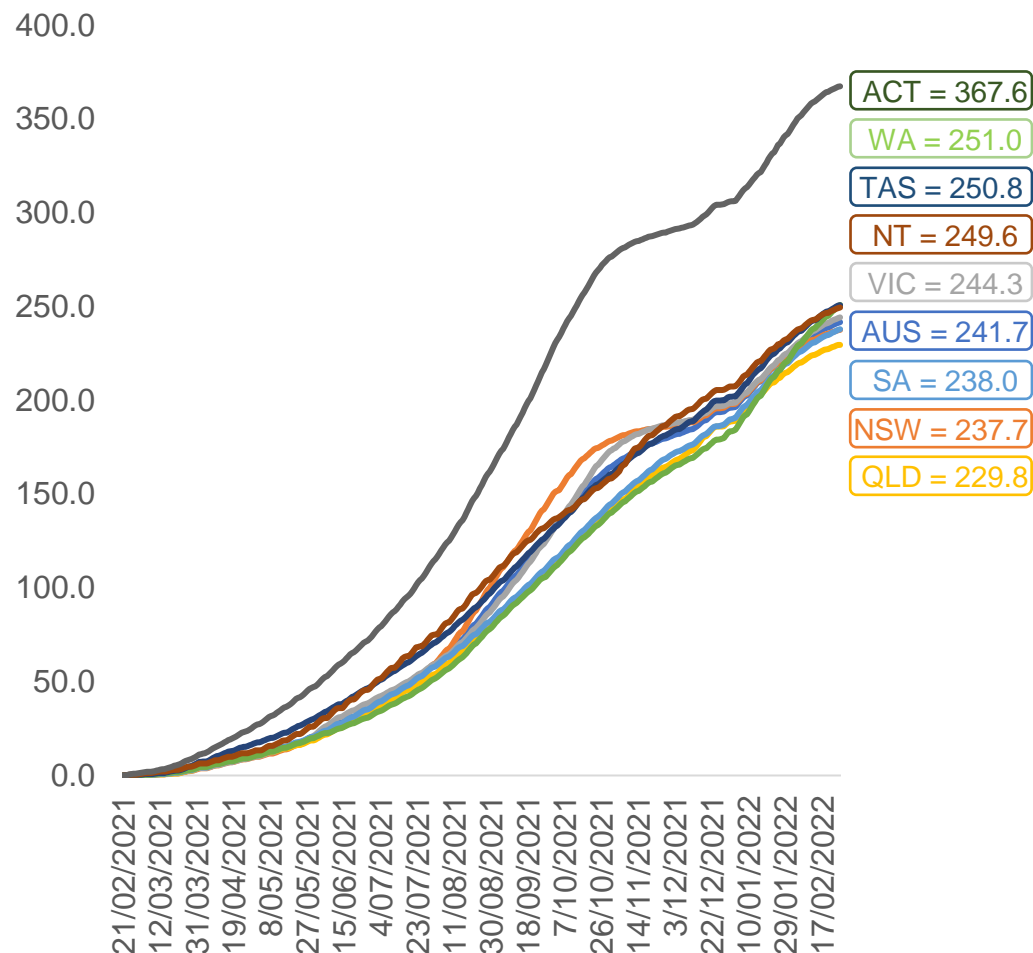
	AUS	ACT	NSW	NT	QLD	SA	TAS	VIC	WA
16 and over - dose 1	19,852,139	350,644	6,288,413	173,793	3,816,276	1,362,309	441,141	5,126,193	2,064,872
16 and over - dose 2	19,472,659	345,342	6,193,691	168,423	3,736,513	1,325,541	430,407	5,050,716	2,011,018
16 and over - population	20,619,959*	344,037	6,565,651	190,571	4,112,707	1,440,400	440,172	5,407,574	2,114,978
16 and over % with dose 1	96.28%	>99%	95.78%	91.20%	92.79%	94.58%	>99%	94.80%	97.63%
16 and over % with dose 2	94.44%	>99%	94.33%	88.38%	90.85%	92.03%	97.78%	93.40%	95.08%
5 to 11 - dose 1	1,137,873	30,992	339,753	12,603	203,767	81,602	27,659	314,087	120,398
5 to 11 - dose 2	19,111	281	7,814	130	3,012	455	83	6,191	1,020
5 to 11 - population	2,276,638	39,789	716,460	24,750	478,731	148,816	45,033	578,499	244,154
5 to 11 % with dose 1	49.98%	77.89%	47.42%	50.92%	42.56%	54.83%	61.42%	54.29%	49.31%
5 to 11 % with dose 2	0.84%	0.71%	1.09%	0.53%	0.63%	0.31%	0.18%	1.07%	0.42%
12 to 15 - dose 1	1,054,099	20,087	326,382	10,911	207,893	68,237	22,849	276,183	112,308
12 to 15 - dose 2	981,573	19,156	308,705	9,627	191,223	63,244	21,252	261,486	98,936
12 to 15 - population	1,243,990	19,693	390,330	13,060	270,146	82,747	26,308	308,611	132,869
12 to 15 % with dose 1	84.74%	>99%	83.62%	83.55%	76.96%	82.46%	86.85%	89.49%	84.53%
12 to 15 % with dose 2	78.91%	97.27%	79.09%	73.71%	70.79%	76.43%	80.78%	84.73%	74.46%

\*National population will not equal sum of listed jurisdictions due to a small number of people counted in national population residing in some 'other' territories. Sum of state doses will not add to national total as some records are unable to be geocoded to a State or Territory.  
Doses sourced from Australian Immunisation Register, population from ABS ERP June 2020



# Vaccinations by location

Cumulative total doses administered vs eligible state populations\*

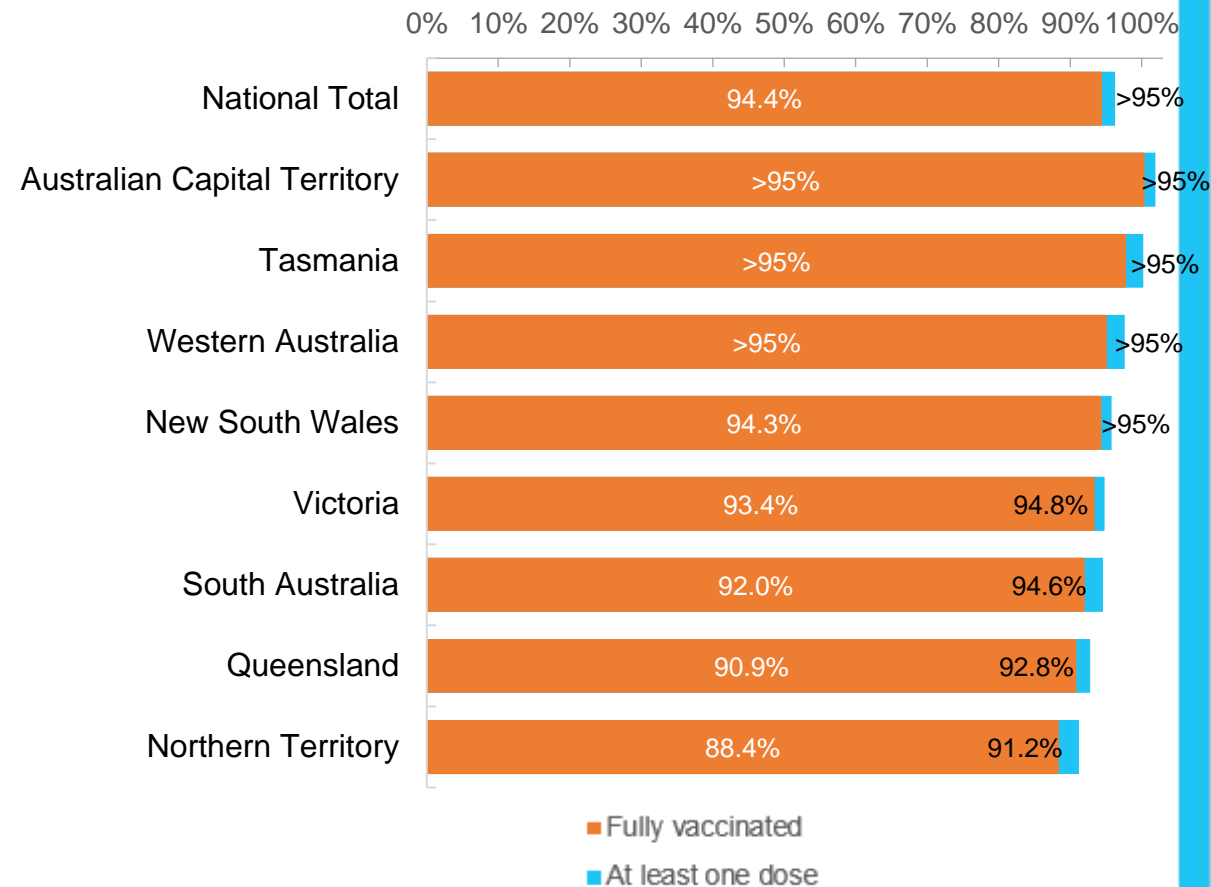


\*Not an indication of percentage vaccinated, numbers will exceed 100 due to multiple doses required per person of the population. All doses are included for those aged 12 and above, and are based on vaccination provider location.

Data as at:  
26 Feb 2022

Australia's COVID-19  
Vaccine Roadmap

First and Second Doses by residential location





# Aboriginal and Torres Strait Islander peoples

## Number of people vaccinated

Data as at:  
22 Feb 2022  
Updated weekly

Australia's COVID-19  
Vaccine Roadmap



**431,220**

people over the age of 16  
have had at least one dose

**83.1%**

of people over the age of 16  
have had at least one dose



**405,102**

people over the age of 16  
are fully vaccinated

**78.0%**

of people over the age of 16 are  
fully vaccinated



**47,614  
(67.1%)**

people aged 12-15 years  
have had at least one dose

### 176 Aboriginal community controlled health services (ACCHS)

0#	50	27	44	12	3	21	19
<b>ACT</b>	<b>NSW</b>	<b>NT</b>	<b>QLD</b>	<b>SA</b>	<b>TAS</b>	<b>VIC</b>	<b>WA</b>

Medicare Address State <sup>##</sup>	Individuals Dose 1	Individuals Dose 1 %	Individuals Dose 2	Individuals Dose 2 %
Australian Capital Territory	4,864	91.3%	4,727	88.7%
New South Wales	134,769	86.5%	131,329	84.3%
Northern Territory	41,851	88.5%	38,873	82.2%
Queensland	113,793	80.3%	106,457	75.1%
South Australia	19,552	78.4%	17,774	71.3%
Tasmania	14,101	88.0%	13,534	84.4%
Victoria	35,162	89.3%	34,237	86.9%
Western Australia	50,742	80.7%	43,986	70.0%
Unknown/Other Territories	16,386	63.4%	14,185	54.9%
<b>Totals</b>	<b>431,220</b>	<b>83.1%</b>	<b>405,102</b>	<b>78.0%</b>

Source: Australian Immunisation Register

\*Identifying as Aboriginal and Torres Strait Islander is optional and the estimated population may be under reported.

\*\*Includes all Aboriginal and Torres Strait Islander peoples who have received a vaccination, not limited to those administered in an ACCHS setting

#ACCHS in the ACT are currently operating as a Commonwealth Vaccine Clinics so not included to avoid double counting

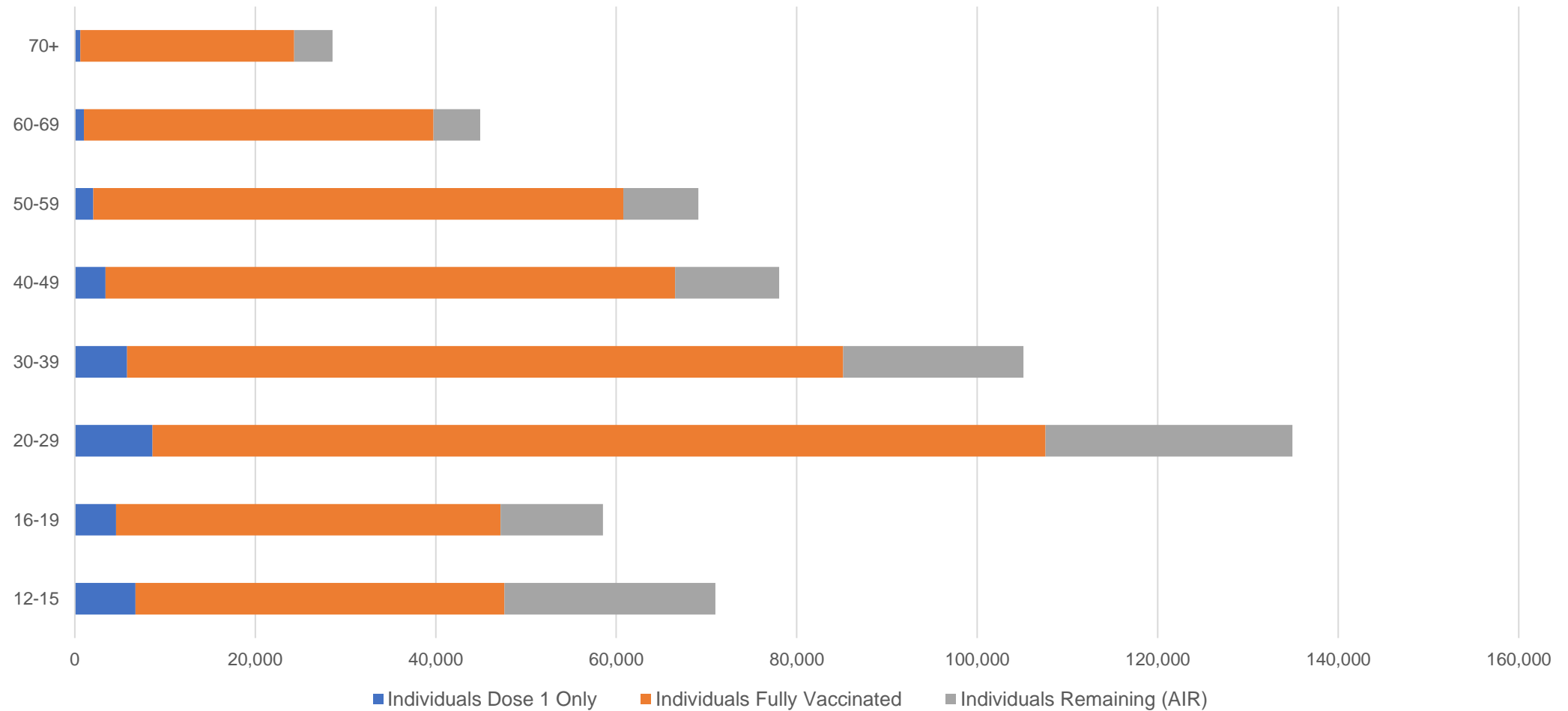
##The above table includes all identified Aboriginal and Torres Strait Islander people who are aged 16 and above by their state of residence.

# Aboriginal and Torres Strait Islander peoples

## Number of people vaccinated by age

Data as at:  
22 Feb 2022  
Updated weekly

Australia's COVID-19  
Vaccine Roadmap



Source: Australian Immunisation Register

# Commonwealth primary care

Data as at:  
26 Feb 2022

Australia's COVID-19  
Vaccine Roadmap



## Primary care vaccine administration sites

<b>5,769</b>	<b>128</b>	<b>176</b>	<b>3,545</b>
GPs	CVCs	ACCHS	Pharmacies



**32,655,959** total vaccine doses administered  
primary care settings as at 26 February  
**+ 41,039** recorded in the last 24 hours

## Primary care vaccinations by provider type

	Doses administered	Daily increase	7 day increase
General Practice* includes other Commonwealth	26,700,528	25,009	372,607
Pharmacy	5,955,431	16,030	210,189

**NSW**  
**11,399,504**  
(+10,305 daily increase)

**VIC**  
**8,158,223**  
(+11,187 daily increase)

**QLD**  
**6,301,405**  
(+4,935 daily increase)

**WA**  
**3,302,370**  
(+10,028 daily increase)

**TAS**  
**597,218**  
(+889 daily increase)

**SA**  
**1,933,984**  
(+2,478 daily increase)

**ACT**  
**516,962**  
(+528 daily increase)

**NT**  
**195,666**  
(+89 daily increase)

**250,627**

doses administered to persons  
residing in other territories or with  
missing residential information

\*General practice includes Commonwealth Vaccination Clinics, Aboriginal Community Health Centres, Royal Flying Doctor Service and other Commonwealth vaccination facilities

Source: Australian Immunisation Register

Data as at:  
26 Feb 2022

# Commonwealth aged care and disability doses administered



**1,251,259** (+ 634 last 24 hours)

Total vaccine doses administered in aged care and disability facilities as at 26 February

Number of doses administered as part of the Commonwealth aged and disability care rollout

**NSW**  
**556,383**  
(-13<sup>#</sup> daily increase)

**VIC**  
**233,859**  
(+77 daily increase)

**QLD**  
**198,002**  
(+32 daily increase)

**WA**  
**101,102**  
(+246 daily increase)

**TAS**  
**22,345**  
(+24 daily increase)

**SA**  
**83,792**  
(+56 daily increase)

**ACT**  
**16,430**  
(+77 daily increase)

**NT**  
**7,377**  
(+7 daily increase)

**31,969**

doses administered to persons residing in other territories or with missing residential information

\*Sourced from the Australian Immunisation Register. Includes all persons vaccinated at participating residential aged care, disability and related industry settings.

\*\*State level breakdown indicates the residential location and may not align to the state in which the vaccination occurred.

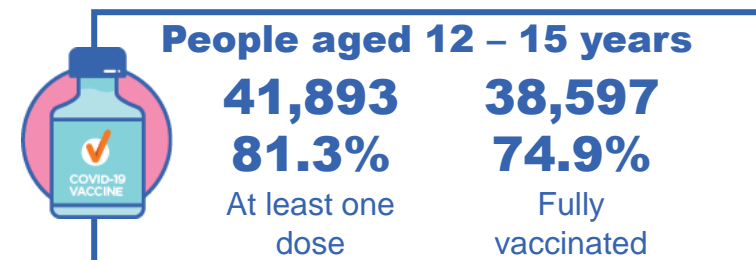
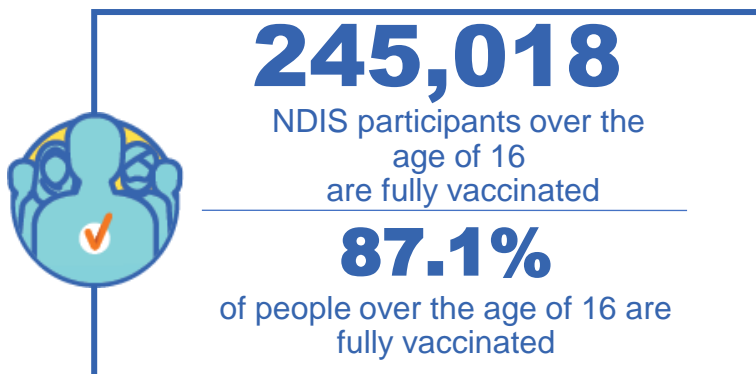
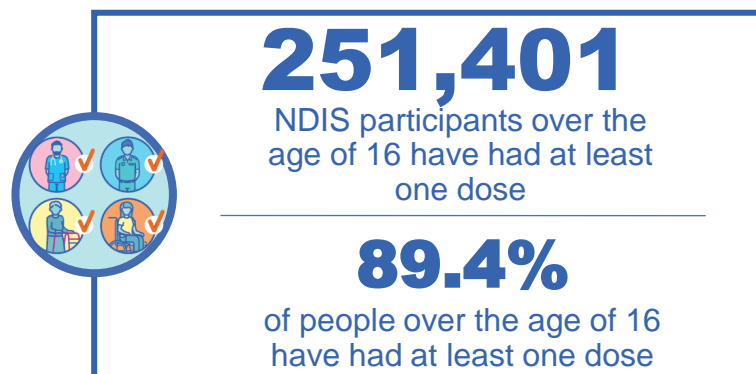
#Numbers are calculated as difference in daily cumulative reported numbers to allow for historical corrections in all data sources. This can occasionally result in negative numbers, such as for NSW, where historical details about doses have been updated.

Source: Australian Immunisation Register

# National Disability Insurance Scheme (NDIS) reported vaccinations

Data as at:  
24 February 2022  
Updated weekly

Australia's COVID-19  
Vaccine Roadmap



## NDIS participant vaccinations

	People aged 16+ with at least one dose	People aged 16+ fully vaccinated	% People aged 16+ with at least one dose	% People aged 16+ fully vaccinated
ACT	4,794	4,722	91.2%	89.8%
NSW	77,732	76,391	89.6%	88.0%
NT	2,187	2,079	80.9%	76.9%
QLD	49,286	47,943	88.7%	86.2%
SA	20,438	19,706	87.1%	84.0%
TAS	6,293	6,077	89.4%	86.3%
VIC	67,084	65,746	90.4%	88.6%
WA	23,587	22,354	89.8%	85.1%
National	251,401	245,018	89.4%	87.1%

Source: Linkage between National Disability Insurance Agency data and the Australian Immunisation Register. Total NDIS participant numbers as at 17th October. Australian Immunisation Register data as at 23 February. Includes all participants regardless of residence type.

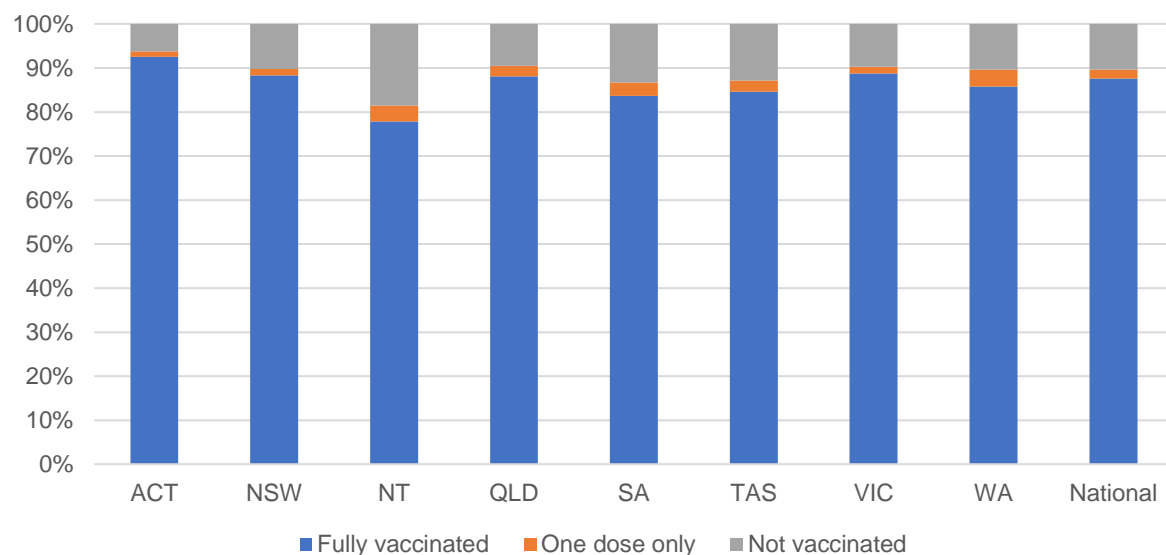
# National Disability Insurance Scheme (NDIS) reported vaccinations

Data as at:  
24 February 2022  
Updated weekly

Australia's COVID-19  
Vaccine Roadmap

NATIONAL	Total people with at least one dose	People fully vaccinated	Total number of individuals in cohort	% People with at least one dose	% People fully vaccinated
NDIS participants living in disability accommodation	20,562	20,115	22,800	90.2%	88.2%

## NDIS participants in disability and aged care accommodation



Source: Linkage between National Disability Insurance Agency data and the Australian Immunisation Register. Includes participants residing in disability accommodation only.

Source: Total NDIS participant numbers as at 17th October. Participant data as at 23 February. Australian Immunisation Register data as at 23 February. Worker data as at 24 February.

## NDIS workforce vaccinations

	NDIS workers with at least one dose	NDIS workers fully vaccinated	% NDIS workers with at least one dose	% NDIS workers fully vaccinated
NSW	120,272	119,703	97.6%	97.1%
VIC	106,884	105,292	98.0%	96.6%
QLD	67,644	66,591	97.2%	95.7%
WA	32,347	30,855	98.1%	93.6%
SA	34,573	33,378	97.6%	94.3%
TAS	10,711	10,574	99.5%	98.2%
ACT	3,528	3,501	99.5%	98.8%
NT	3,248	3,205	99.4%	98.1%
<b>TOTAL</b>	<b>379,207</b>	<b>373,099</b>	<b>97.8%</b>	<b>96.2%</b>

Source: the NDIS Commission has established a requirement for registered NDIS providers who provide intensive disability support services to report on the vaccination status of workers they employ, or otherwise engage, to deliver NDIS-funded supports and services, and who are required to be vaccinated in accordance with in-force state and territory public health orders. The statistics reflect data reported to the NDIS Commission by registered NDIS providers and should be considered indicative and subject to change

Note: Some registered NDIS providers are yet to report on the vaccination status of their workforce. The NDIS Commission is working with those providers around reporting requirements.

Remaining workers not included include those exempt from vaccination requirements, workers whose vaccination status is not yet verified by the provider (such as workers on leave) and provider reporting anomalies.

# Residential aged care vaccination rollout

Residential aged care facilities status

100%

Commonwealth facilities visited (2,541 planned sites)

172,710

People fully vaccinated

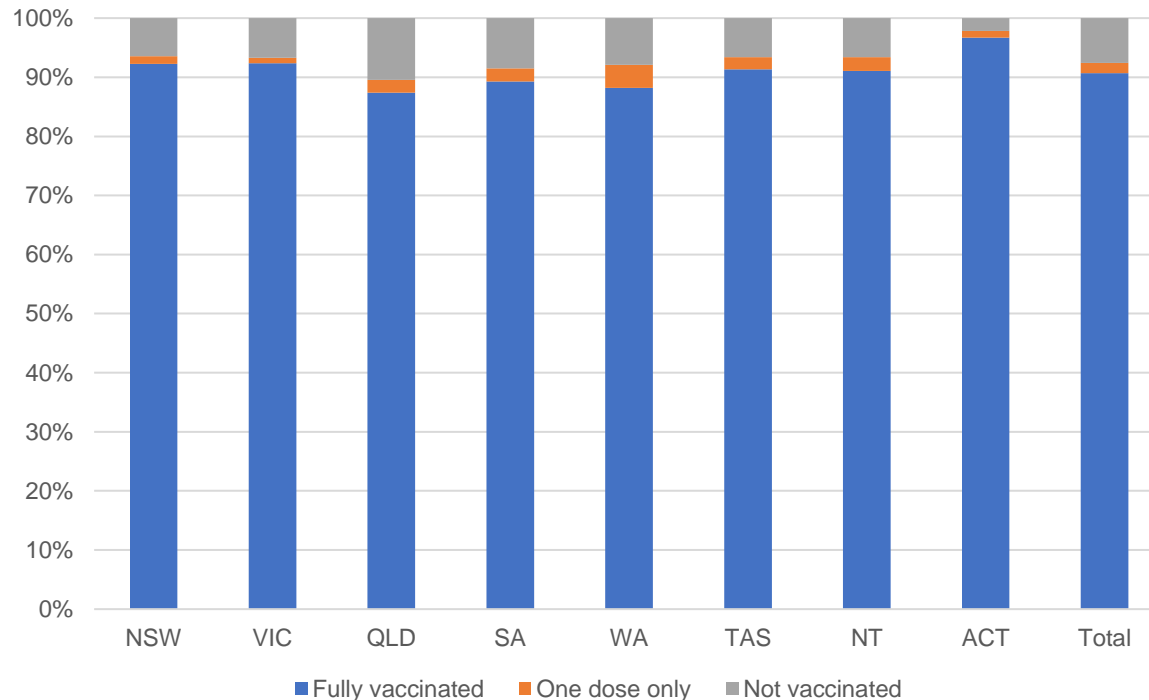
175,975

People with at least one dose

Australia's COVID-19 Vaccine Roadmap

Data as at:  
24 Feb 2022  
Updated weekly

## Aged care resident vaccinations



## Aged care worker vaccinations

Jurisdictions	Total workers with at least one dose	Workers fully vaccinated	% Workers with at least one dose	% Workers fully vaccinated
NSW	78,672	78,654	99.2%	99.2%
VIC	69,348	69,283	98.9%	98.8%
QLD	48,822	48,819	99.0%	99.0%
SA	26,976	26,947	98.4%	98.3%
WA	23,800	23,797	99.1%	99.1%
TAS	7,615	7,615	99.3%	99.3%
NT	878	878	100.0%	100.0%
ACT	3,031	3,031	100.0%	100.0%
Total	259,142	259,024	99.0%	99.0%

Source: My Aged Care Portal vaccination progress

\*Status updates are provided by facilities at least once per week. Reporting is updated Monday to Friday to encompass different facility updates being made on different days.

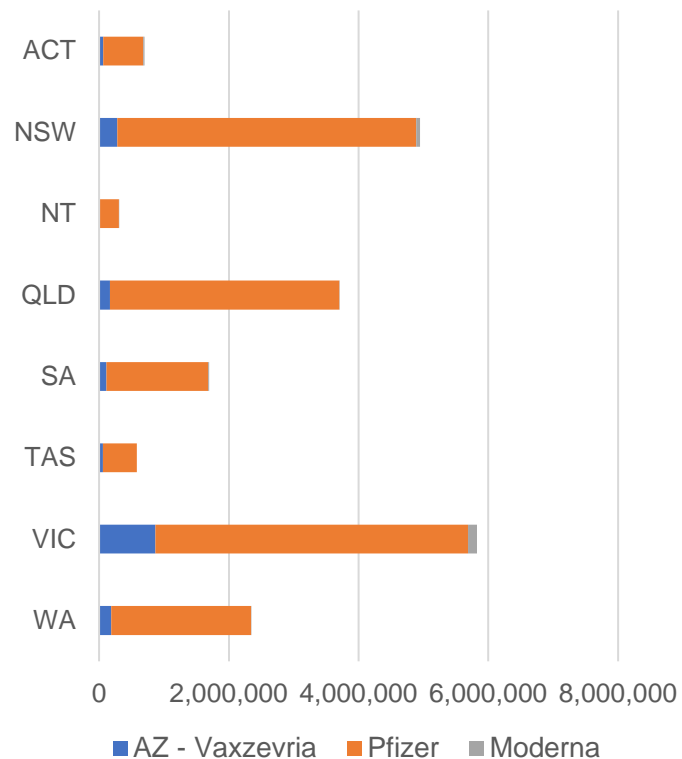
Data is sourced directly from Aged Care Service Providers and is not drawn or closely aligned with data from AIR due to inconsistencies and potential lags in uploading of records.



Data as at:  
26 Feb 2022

## Jurisdiction administered

Total vaccine doses administered in State and Territory clinics as at 26 February



**20,105,507** total vaccine doses administered  
in State and Territory clinics as at 26 February  
+ **25,529** recorded in the last 24 hours  
+ **173,617** recorded in the last 7 days

**NSW**  
**4,947,046**  
(+3,812 daily  
increase)

**VIC**  
**5,826,732**  
(+6,916 daily  
increase)

**QLD**  
**3,706,543**  
(+2,732 daily  
increase)

**WA**  
**2,340,469**  
(+6,612 daily  
increase)

**TAS**  
**582,763**  
(+503 daily  
increase)

**SA**  
**1,697,520**  
(+2,934 daily  
increase)

**ACT**  
**698,872**  
(+1,491 daily  
increase)

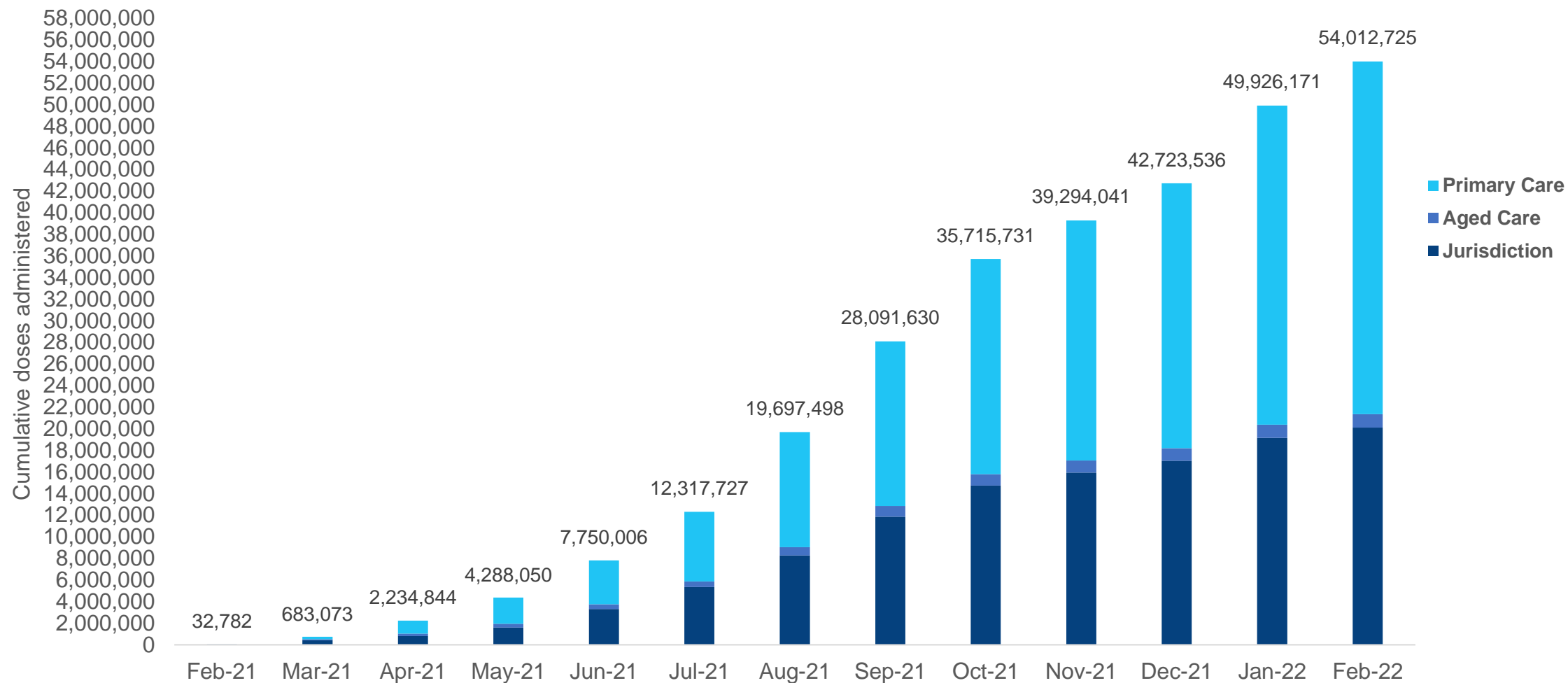
**NT**  
**305,562**  
(+529 daily  
increase)

\*Sourced from the Australian Immunisation Register. Numbers are calculated as difference in daily cumulative reported numbers to allow for historical corrections.

Source: Australian Immunisation Register

# Cumulative doses administered by channel

Data as at:  
26 Feb 2022



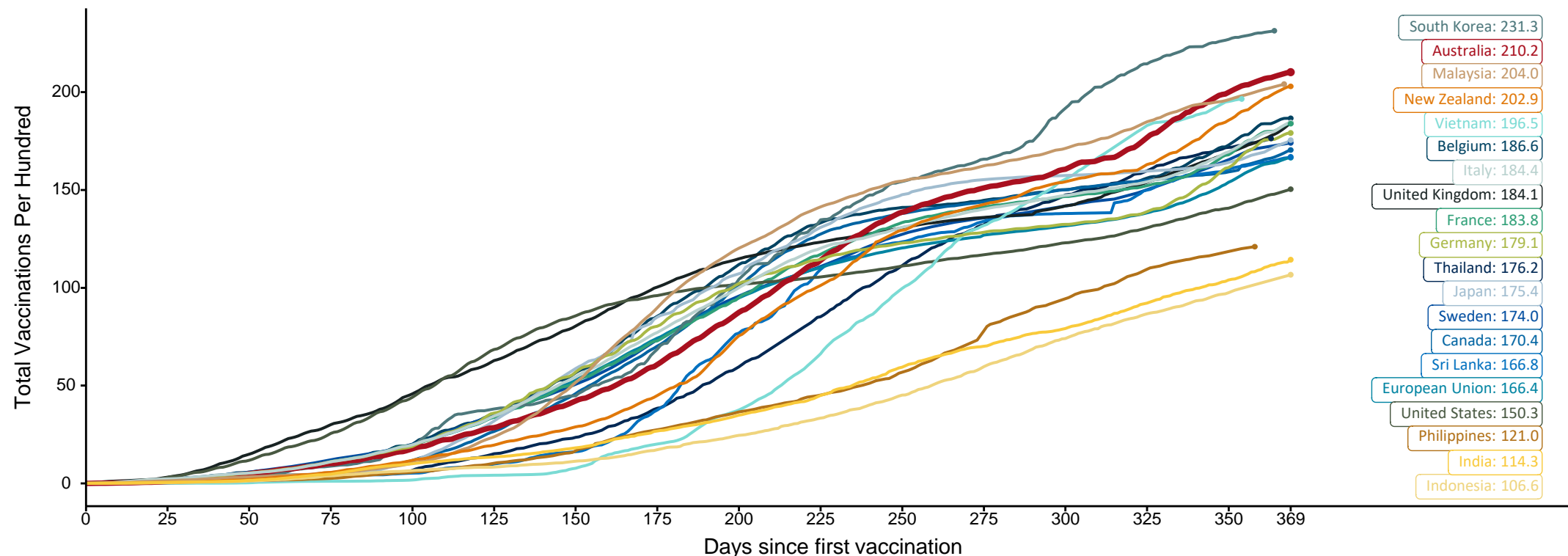
Source: Australian Immunisation Register

## Doses at equivalent stages of rollout (Day 369)

Data as at:  
26 Feb 2022

The x-axis is truncated at the length of Australia's vaccination program. Countries with intermittent reporting have had their doses per 100 imputed to Australia's current stage of rollout. Israel excluded as it is beyond scale of the graph

Cumulative doses administered (26 Feb): **54,012,725**

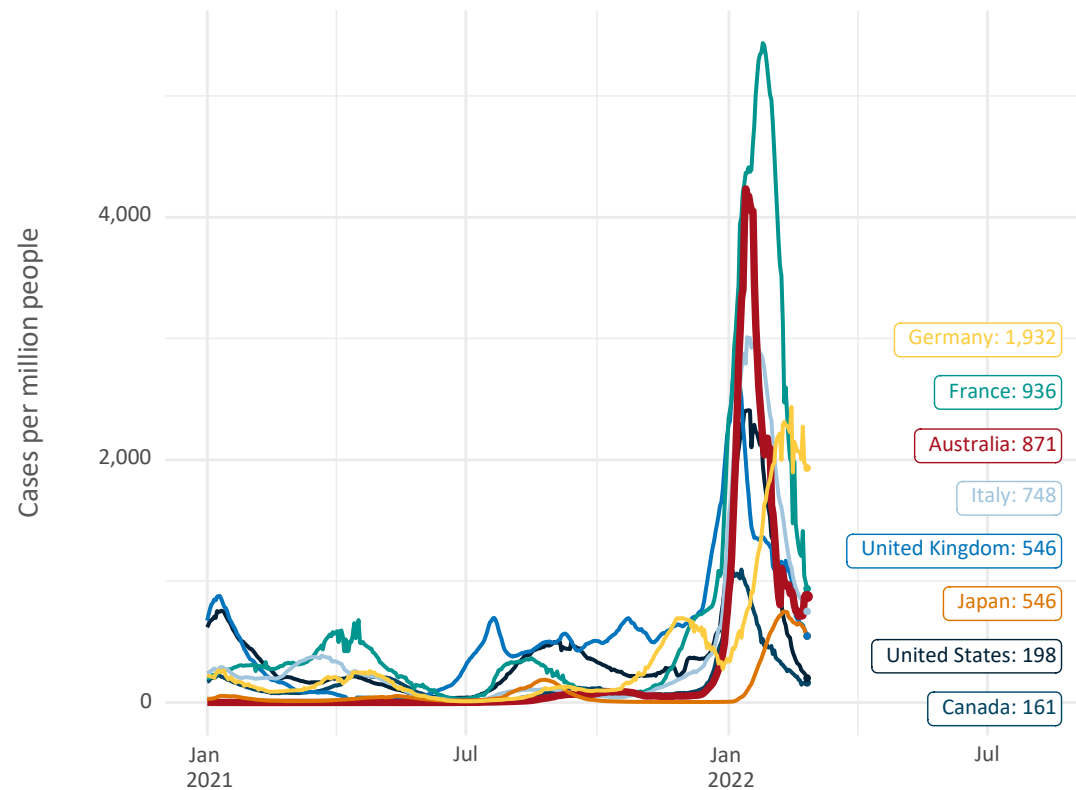


Note: From 15 September 2021, data for Australia includes all doses administered to people 12 and over. Prior to 15 September, data was for 16 and over  
 Due to data revisions, Singapore has been removed from the chart  
 Source: Department of Health (Australia), Our World in Data (international)  
 Latest data: 26 February

Data as at:  
26 Feb 2022

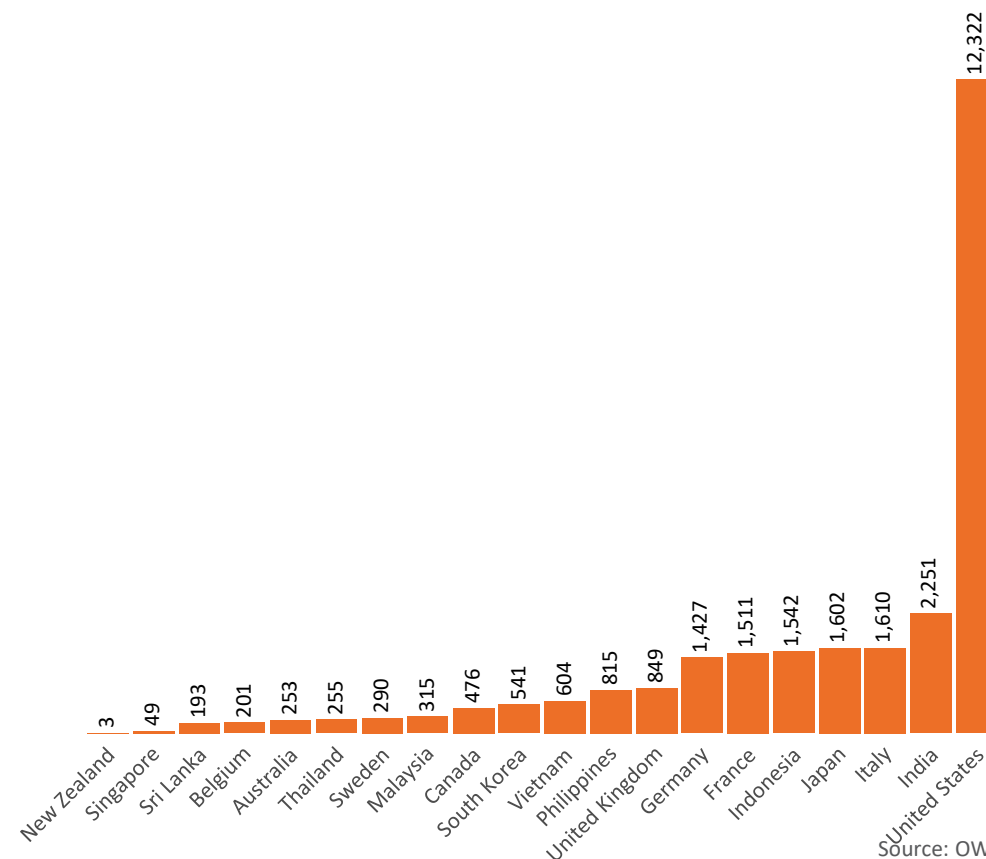
# International data – COVID-19

New daily cases per million in 2021, Australia and G7 countries  
Smoothed - 7 day average



Source: OWID  
Data downloaded: 27 Feb 2022 07:47  
Latest data: 25 Feb 2022

COVID-19 deaths in past 7 days - Australia and select countries



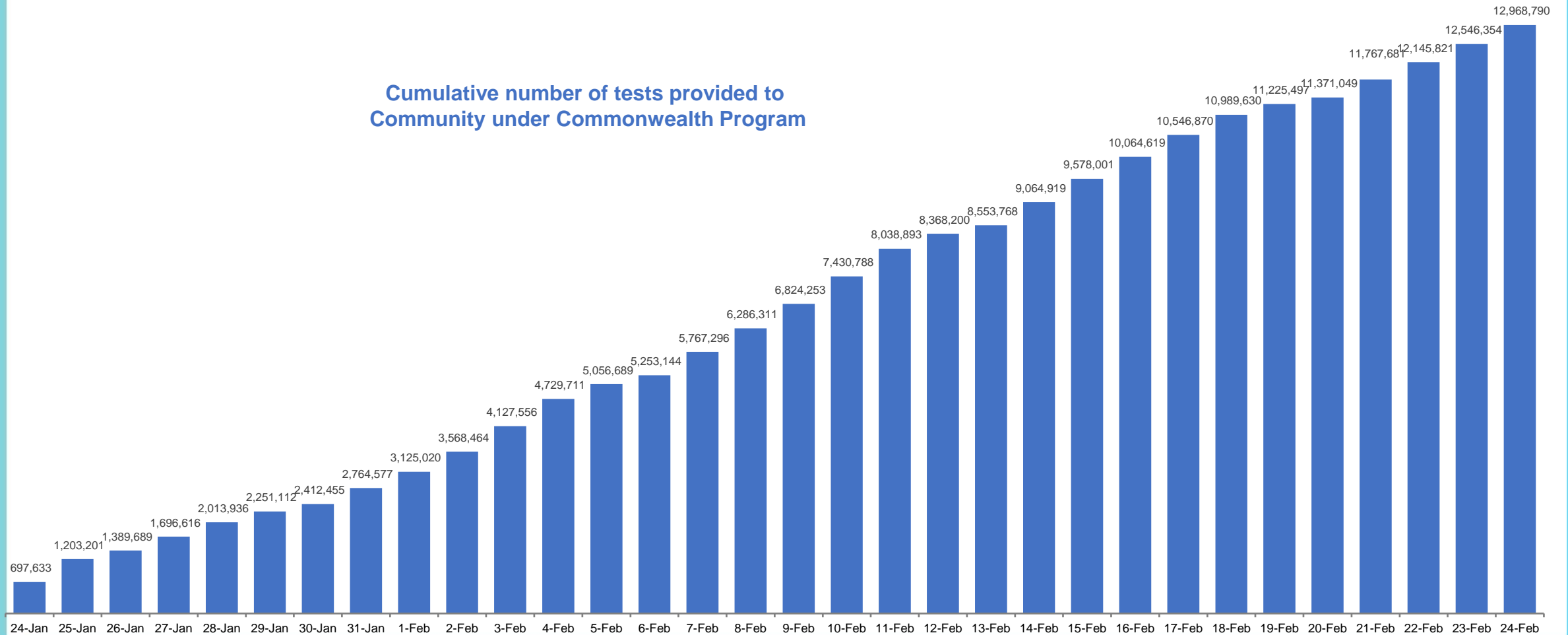
Source: OWID  
Data downloaded: 27 Feb 2022 07:47  
Latest data: 25 Feb 2022

## Concessional rapid antigen test program

**5,523 pharmacies** have delivered over **12.9 million rapid antigen tests** to over **2.7m eligible concession card holders** under the Government's concessional rapid antigen test program.

Data as at  
24 Feb 2022

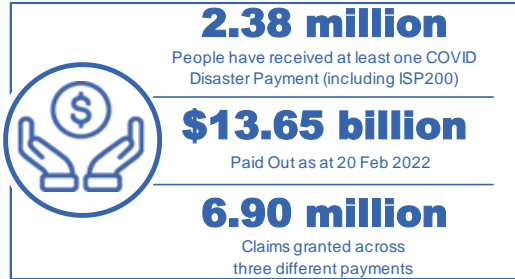
Cumulative number of tests provided to  
Community under Commonwealth Program



# Pandemic Response Payments

Australia's COVID-19  
Vaccine Roadmap

Data as at midnight: 20 Feb 2022  
Updated weekly



<b>COVID Disaster Payment:</b>	5.89 million claims received - 2.19 million individuals paid a total of \$12.59 billion.
<b>\$200 Income Support Payment:</b>	353,000 claims received - 183,000 individuals paid a total of \$268.9 million.
<b>Pandemic Leave Disaster Payment:</b>	1,069,000 claims received - 719,000 individuals paid a total of \$791.1 million.



## COVID Disaster Payment

assisting during a lockdown event in a Commonwealth hotspot.

## Income Support Payment \$200

for income support recipients who lost at least 8 hours of work.

## Pandemic Leave Disaster Payment

for those who have to self-isolate, quarantine or care.

For more information visit:  
[servicesaustralia.gov.au](https://servicesaustralia.gov.au)

## COVID-19 DISASTER PAYMENTS

### Northern Territory

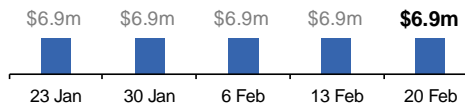
Lockdown (#3) from 16 Nov to 22 Nov  
Claiming period ended 27 Dec

**7,500 people have received at least one COVID Disaster Payment.**

**\$6.9m paid out as at 20 Feb 2022.**

**\$0 paid in initial payments in the week ending 20 Feb 2022.**

Cumulative payments made by Territory since activation on 25 Aug 2021.



### Victoria

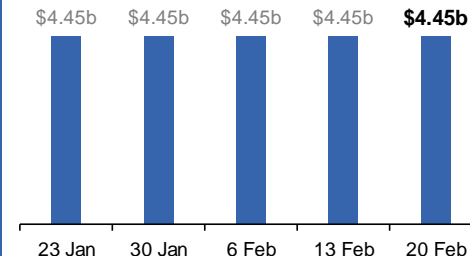
Lockdown (#6) from 6 Aug to 28 Oct  
Claiming period ended 9 Dec

**745,000 people have received at least one COVID Disaster Payment.**

**\$4.45b paid out as at 20 Feb 2022.**

**\$10,000 paid in initial and reoccurring payments in the week ending 20 Feb 2022.**

Cumulative payments made by State since activation on 8 Jun 2021.



### New South Wales

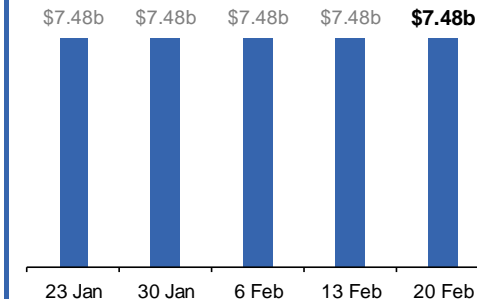
Lockdown from 24 Jun to 10 Oct  
Claiming period ended 27 Nov

**1.08m people have received at least one COVID Disaster Payment.**

**\$7.48b paid out as at 20 Feb 2022.**

**\$11,000 paid in initial and reoccurring payments in the week ending 20 Feb 2022.**

Cumulative payments made by State since activation on 1 Jul 2021.



### Australian Capital Territory

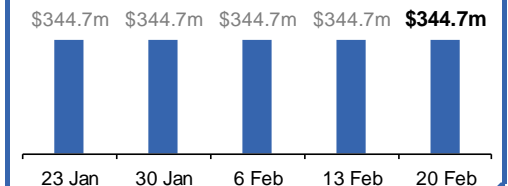
Lockdown from 12 Aug to 14 Oct  
Claiming period ended 25 Nov

**65,000 people have received at least one COVID Disaster Payment.**

**\$344.7m paid out as at 20 Feb 2022.**

**\$1,000 paid in initial and reoccurring payments in the week ending 20 Feb 2022.**

Cumulative payments made by Territory since activation on 20 Aug 2021.



# Pandemic Response Payments (continued)

Data as at midnight: 20 Feb 2022  
Updated weekly

## COVID-19 DISASTER PAYMENTS

