



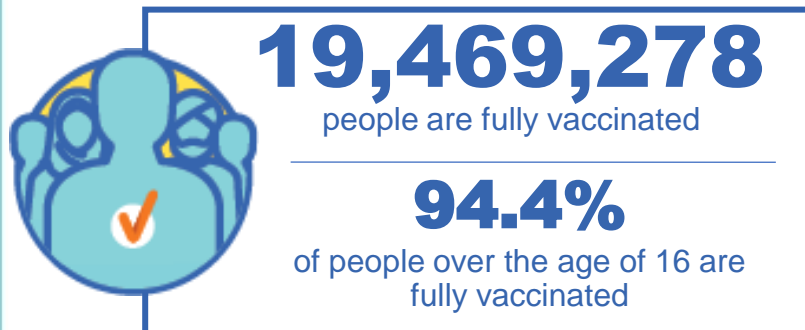
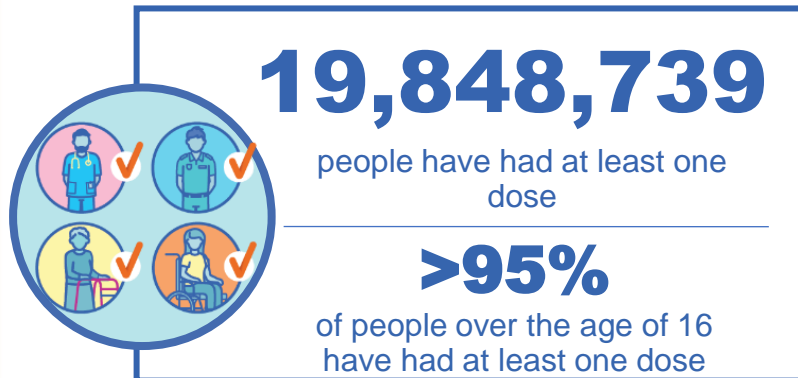
**Australian Government**  
**Operation COVID Shield**

# COVID-19 Vaccine Roll-out

26 February 2022

Data as at:  
25 Feb 2022

## Total vaccine doses



**53,945,523** total vaccine doses administered nationally as at 25 February

**+123,107** recorded in the last 24 hours

**NSW**  
**16,870,085**  
(+31,635 daily increase)

**VIC**  
**14,266,133**  
(+30,895 daily increase)

**QLD**  
**10,273,198**  
(+18,304 daily increase)

**WA**  
**5,747,663**  
(+25,744 daily increase)

**TAS**  
**1,197,159**  
(+2,890 daily increase)

**SA**  
**3,702,037**  
(+8,686 daily increase)

**ACT**  
**1,368,014**  
(+3,761 daily increase)

**NT**  
**521,234**  
(+1,192 daily increase)

\*Administration state breakdown indicates state in which a vaccine was administered

\*\*Overall dose count includes instances of more than two doses per person in a small number of cases.

Source: Australian Immunisation Register

# Booster Vaccinations

Australia's COVID-19  
Vaccine Roadmap

Data as at:  
25 Feb 2022



**153,875**

Indigenous people who have  
received more than two doses

**48.2%**

of eligible population (319,155)



**153,826**

Aged Care Residents who have  
received more than two doses##

**89.1%**

of eligible population (172,710)



**148,491**

NDIS participants

who have received more than two doses#

**66.0%**

of eligible population  
(224,986)

**18,530**

NDIS residents

**80.5%**

of eligible population  
(23,019)



**11,361,043**

total people who  
have received more than two doses nationally

**+102,031** recorded in the last 24 hours

**63.2%** of people who are eligible (17,963,805)  
have received more than two doses

NSW	People	% of Eligible
Cumulative	3,537,228	58.1%
Daily increase	27,729	

VIC	People	% of Eligible
Cumulative	3,098,162	63.1%
Daily increase	27,000	

QLD	People	% of Eligible
Cumulative	1,984,679	62.8%
Daily increase	14,545	

WA	People	% of Eligible
Cumulative	1,282,518	80.0%
Daily increase	20,130	

SA	People	% of Eligible
Cumulative	802,337	69.4%
Daily increase	6,941	

TAS	People	% of Eligible
Cumulative	249,912	65.0%
Daily increase	2,448	

ACT	People	% of Eligible
Cumulative	235,700	69.4%
Daily increase	1,318	

NT	People	% of Eligible
Cumulative	90,632	63.0%
Daily increase	937	

**79,875**

doses administered to persons  
residing in other territories or with  
missing residential information

\*People may belong to multiple groups and could be represented in the above breakdowns multiple times.

# NDIS participants data as at 24 February 2022.

## Aged Care Residents data as at 25 February 2022.

Source: Australian Immunisation Register

# Vaccinations by residential location

Australia's COVID-19 Vaccine Roadmap

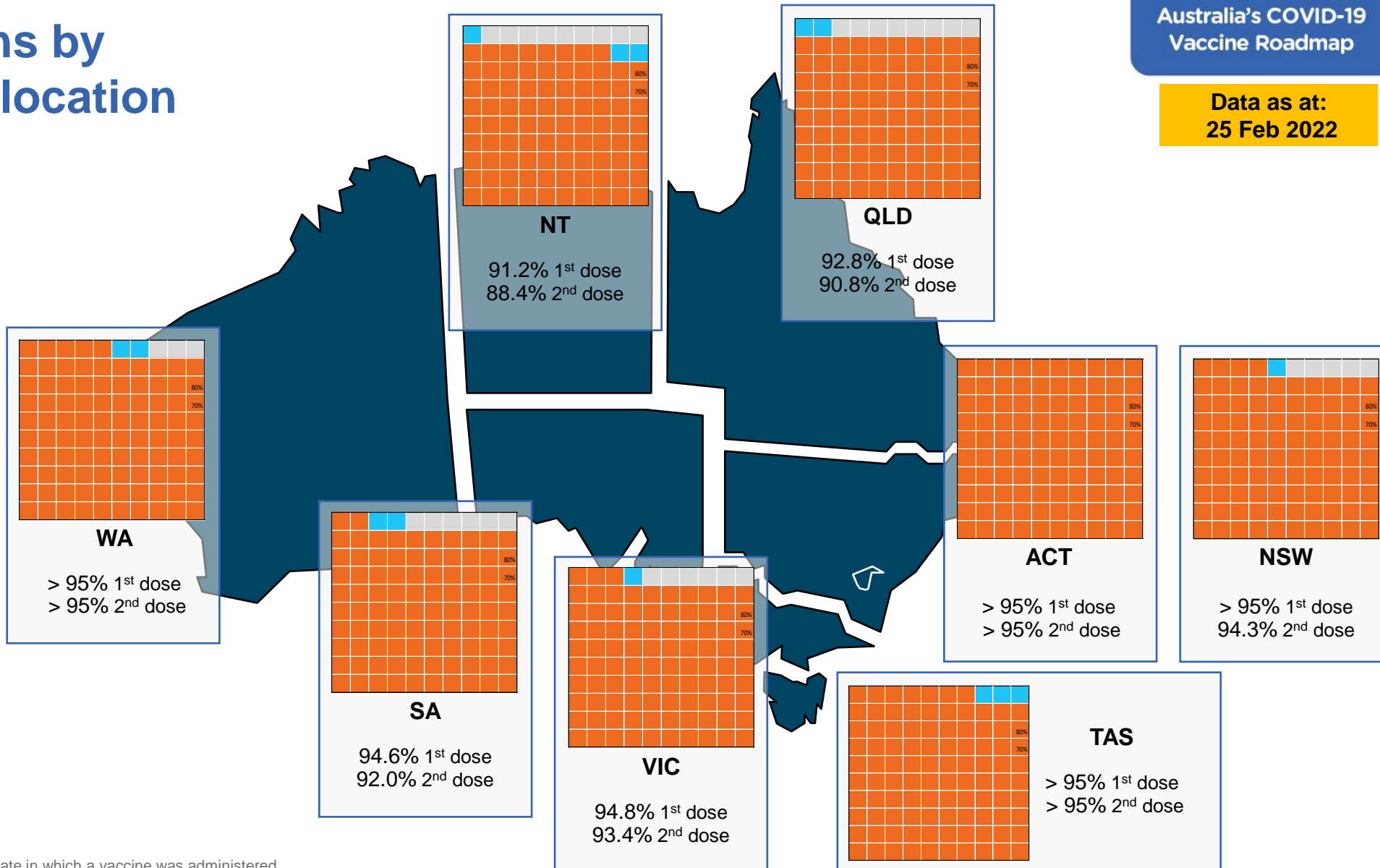
Data as at:  
25 Feb 2022

## First doses

Age	Today	4 weeks ago	8 weeks ago
16+	>95%	>95%	94.8%
50+	>95%	>95%	>95%
70+	>95%	>95%	>95%

## Fully vaccinated

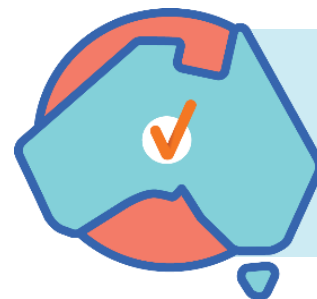
Age	Today	4 weeks ago	8 weeks ago
16+	94.4%	93.5%	91.9%
50+	>95%	>95%	>95%
70+	>95%	>95%	>95%



\*Residential state may differ from the state in which a vaccine was administered

# Commonwealth and Jurisdiction vaccine doses administered

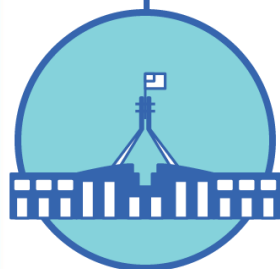
Data as at:  
25 Feb 2022



**53,945,523** total vaccine  
doses administered nationally as at 25 February  
**+ 123,107** recorded in the last 24 hours



**20,079,978**  
doses administered by state  
and territory facilities  
**+ 25,817**  
recorded in the last 24 hours



**33,865,545**  
doses administered by  
commonwealth facilities  
**+ 97,290**  
recorded in the last 24 hours  
**32,614,920** total vaccine doses  
administered in primary care settings  
**1,250,625** total vaccine doses  
administered in aged care and disability  
settings

NSW	Jurisdictions	Commonwealth
Cumulative	4,943,234	11,926,851
Daily increase	2,977	28,658

VIC	Jurisdictions	Commonwealth
Cumulative	5,819,816	8,446,317
Daily increase	6,943	23,952

QLD	Jurisdictions	Commonwealth
Cumulative	3,703,811	6,569,387
Daily increase	3,103	15,201

WA	Jurisdictions	Commonwealth
Cumulative	2,333,857	3,413,806
Daily increase	6,645	19,099

TAS	Jurisdictions	Commonwealth
Cumulative	582,260	614,899
Daily increase	606	2,284

SA	Jurisdictions	Commonwealth
Cumulative	1,694,586	2,007,451
Daily increase	2,645	6,041

ACT	Jurisdictions	Commonwealth
Cumulative	697,381	670,633
Daily increase	2,237	1,524

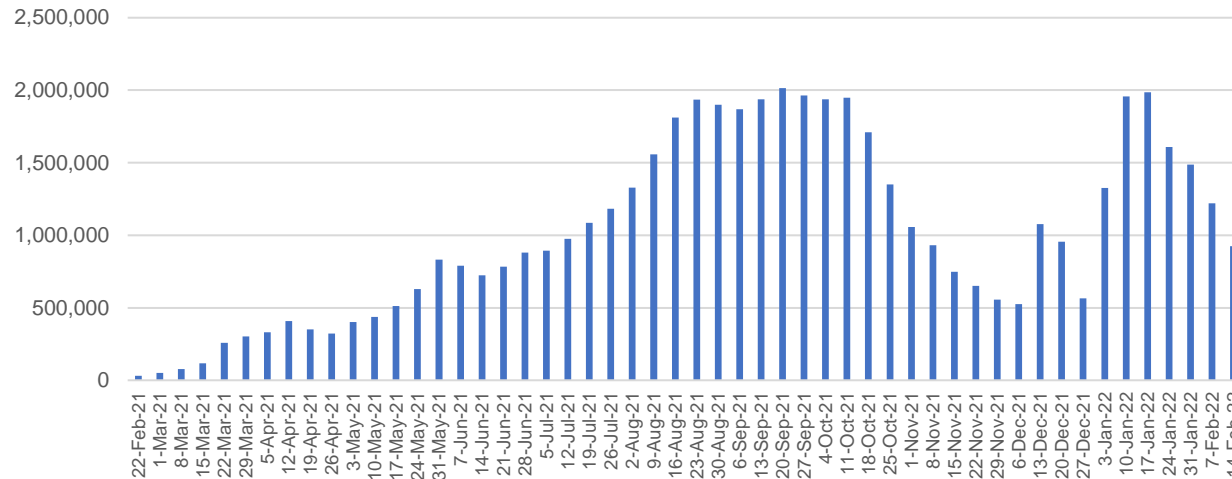
NT	Jurisdictions	Commonwealth
Cumulative	305,033	216,201
Daily increase	661	531

# Vaccine milestone charts

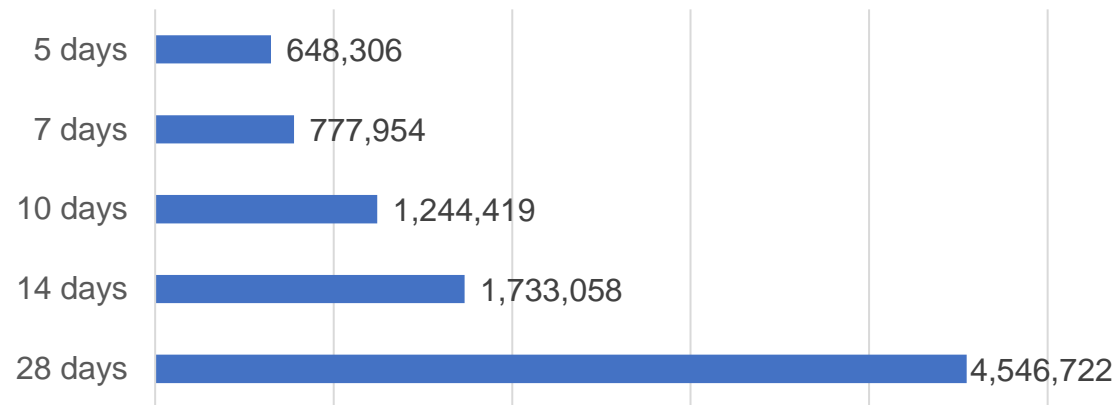
Data as at:  
25 Feb 2022

Australia's COVID-19  
Vaccine Roadmap

Doses Administered by Week

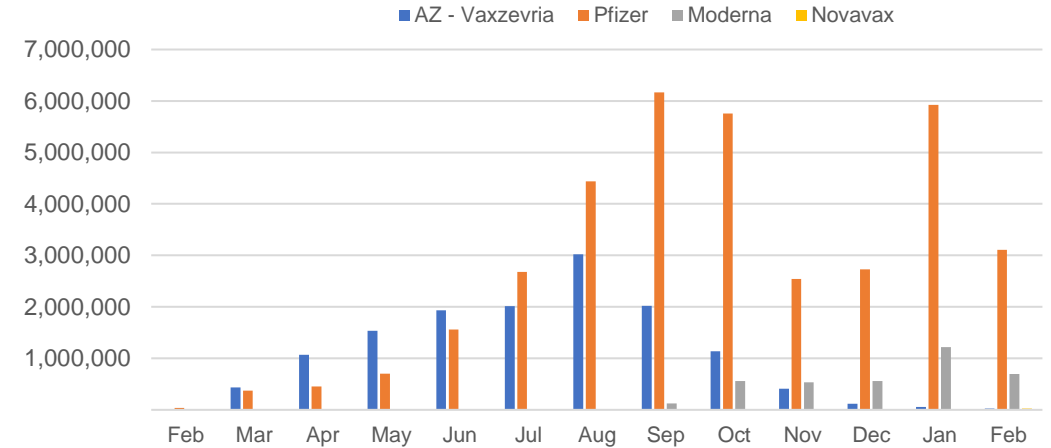


Doses Reported

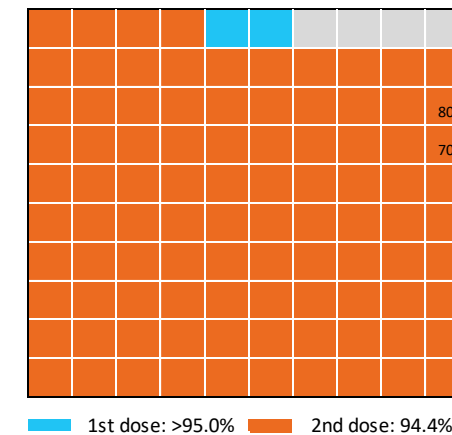


\*Sourced from the Australian Immunisation Register.

Doses by administration month and vaccine type



Eligible population percentage coverage



\*Each square represents 1% of the national population.  
Squares are filled as milestones are achieved.

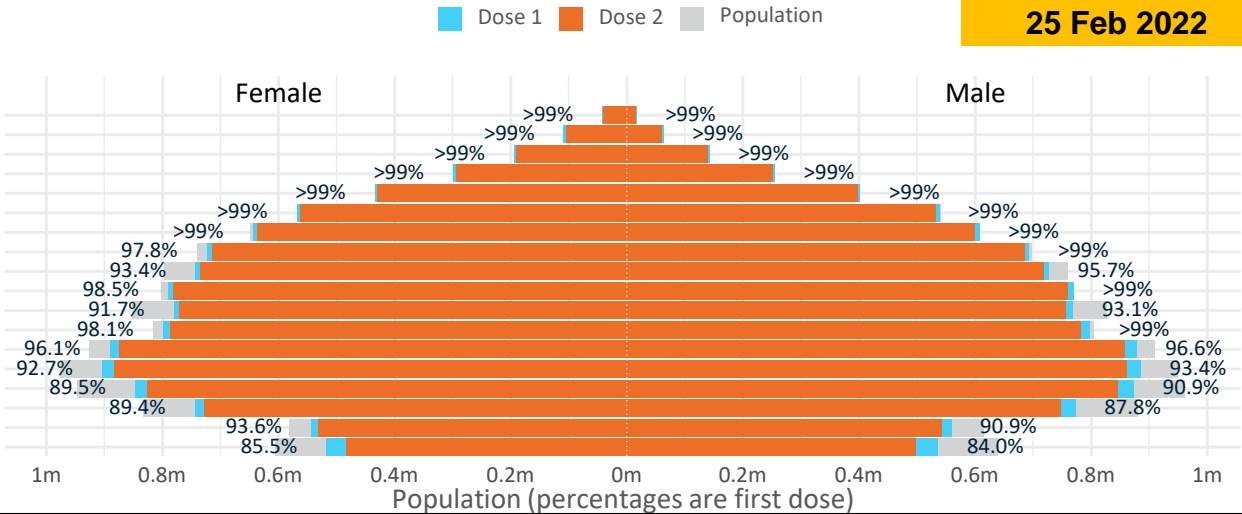
# Doses by age and sex

First and second doses by age and sex

	16+	50+	12-15	5-11
Dose 1	96.26% (19,848,739 doses / 20,619,959 people)	>99% (8,769,450 doses / 8,749,703 people)	84.74% (1,054,135 doses / 1,243,990 people)	49.81% (1,134,035 doses / 2,276,638 people)
Dose 2	94.42% (19,469,278 doses / 20,619,959 people)	98.84% (8,648,479 doses / 8,749,703 people)	78.86% (980,991 doses / 1,243,990 people)	0.79% (17,981 doses / 2,276,638 people)

Data as at:  
25 Feb 2022

Age	Dose 1	Dose 2
95+	58,319 (>99%)	54,817 (>99%)
90-94	171,868 (>99%)	165,695 (>99%)
85-89	336,292 (>99%)	328,359 (>99%)
80-84	554,313 (>99%)	545,835 (>99%)
75-79	836,475 (>99%)	826,816 (>99%)
70-74	1,107,599 (>99%)	1,095,189 (>99%)
65-69	1,253,134 (>99%)	1,237,462 (98.4%)
60-64	1,418,434 (98.7%)	1,400,335 (97.5%)
55-59	1,471,948 (94.6%)	1,453,219 (93.4%)
50-54	1,561,068 (>99%)	1,540,752 (98.5%)
45-49	1,550,537 (92.5%)	1,527,991 (91.1%)
40-44	1,600,072 (98.8%)	1,571,477 (97.0%)
35-39	1,773,150 (96.6%)	1,735,995 (94.6%)
30-34	1,797,780 (93.5%)	1,751,101 (91.0%)
25-29	1,731,090 (90.8%)	1,680,067 (88.1%)
20-24	1,523,411 (89.0%)	1,480,392 (86.5%)
16-19	1,103,249 (92.3%)	1,073,776 (89.8%)
12-15	1,054,135 (84.7%)	980,991 (78.9%)



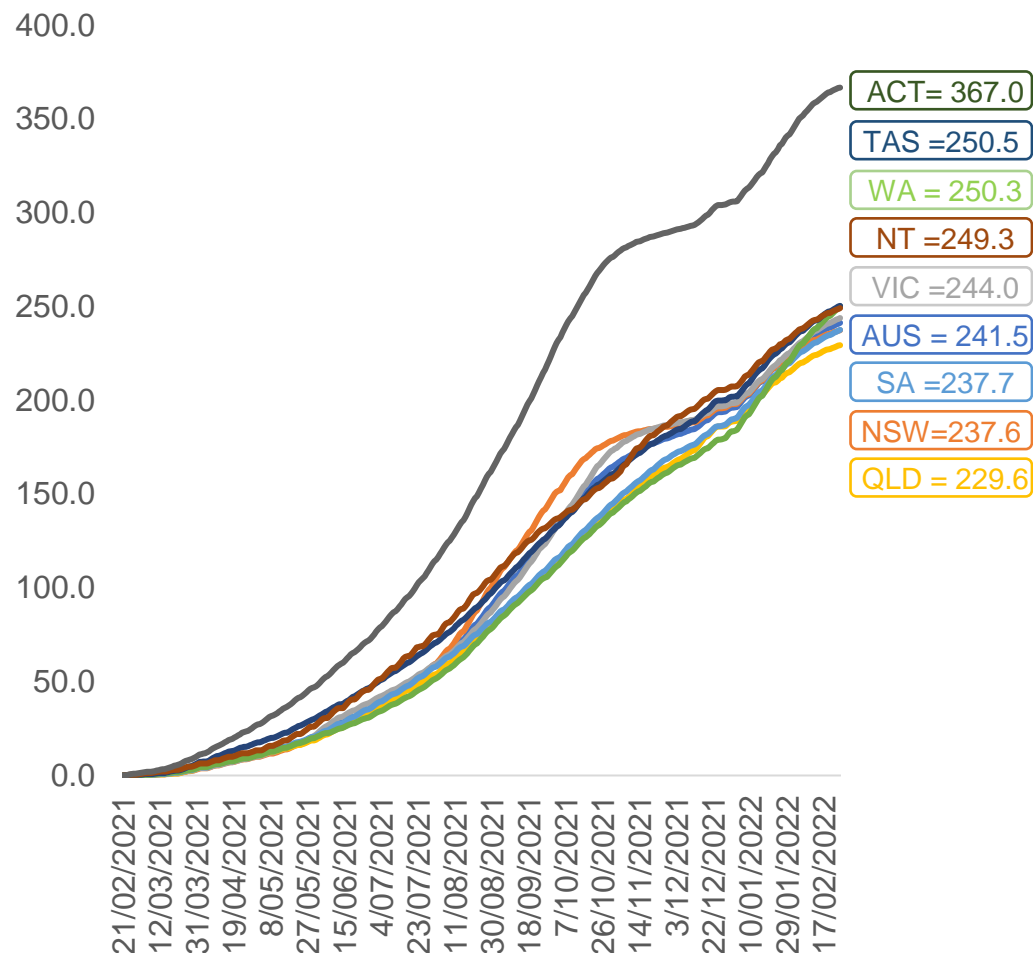
	AUS	ACT	NSW	NT	QLD	SA	TAS	VIC	WA
16 and over - dose 1	19,848,739	350,575	6,288,006	173,749	3,815,570	1,361,901	441,062	5,125,535	2,064,174
16 and over - dose 2	19,469,278	345,300	6,193,410	168,379	3,735,851	1,325,163	430,330	5,050,309	2,009,874
16 and over - population	20,619,959*	344,037	6,565,651	190,571	4,112,707	1,440,400	440,172	5,407,574	2,114,978
16 and over % with dose 1	96.26%	>99%	95.77%	91.17%	92.78%	94.55%	>99%	94.78%	97.60%
16 and over % with dose 2	94.42%	>99%	94.33%	88.35%	90.84%	92.00%	97.76%	93.39%	95.03%
5 to 11 - dose 1	1,134,035	30,921	338,887	12,583	203,515	81,291	27,662	313,329	118,854
5 to 11 - dose 2	17,981	276	7,454	128	2,936	438	83	5,682	863
5 to 11 - population	2,276,638	39,789	716,460	24,750	478,731	148,816	45,033	578,499	244,154
5 to 11 % with dose 1	49.81%	77.71%	47.30%	50.84%	42.51%	54.63%	61.43%	54.16%	48.68%
5 to 11 % with dose 2	0.79%	0.69%	1.04%	0.52%	0.61%	0.29%	0.18%	0.98%	0.35%
12 to 15 - dose 1	1,054,135	20,102	326,476	10,906	207,956	68,243	22,861	276,236	112,101
12 to 15 - dose 2	980,991	19,170	308,723	9,622	191,132	63,167	21,245	261,493	98,505
12 to 15 - population	1,243,990	19,693	390,330	13,060	270,146	82,747	26,308	308,611	132,869
12 to 15 % with dose 1	84.74%	>99%	83.64%	83.51%	76.98%	82.47%	86.90%	89.51%	84.37%
12 to 15 % with dose 2	78.86%	97.34%	79.09%	73.68%	70.75%	76.34%	80.75%	84.73%	74.14%

\*National population will not equal sum of listed jurisdictions due to a small number of people counted in national population residing in some 'other' territories. Sum of state doses will not add to national total as some records are unable to be geocoded to a State or Territory.  
Doses sourced from Australian Immunisation Register, population from ABS ERP June 2020



# Vaccinations by location

Cumulative total doses administered vs eligible state populations\*

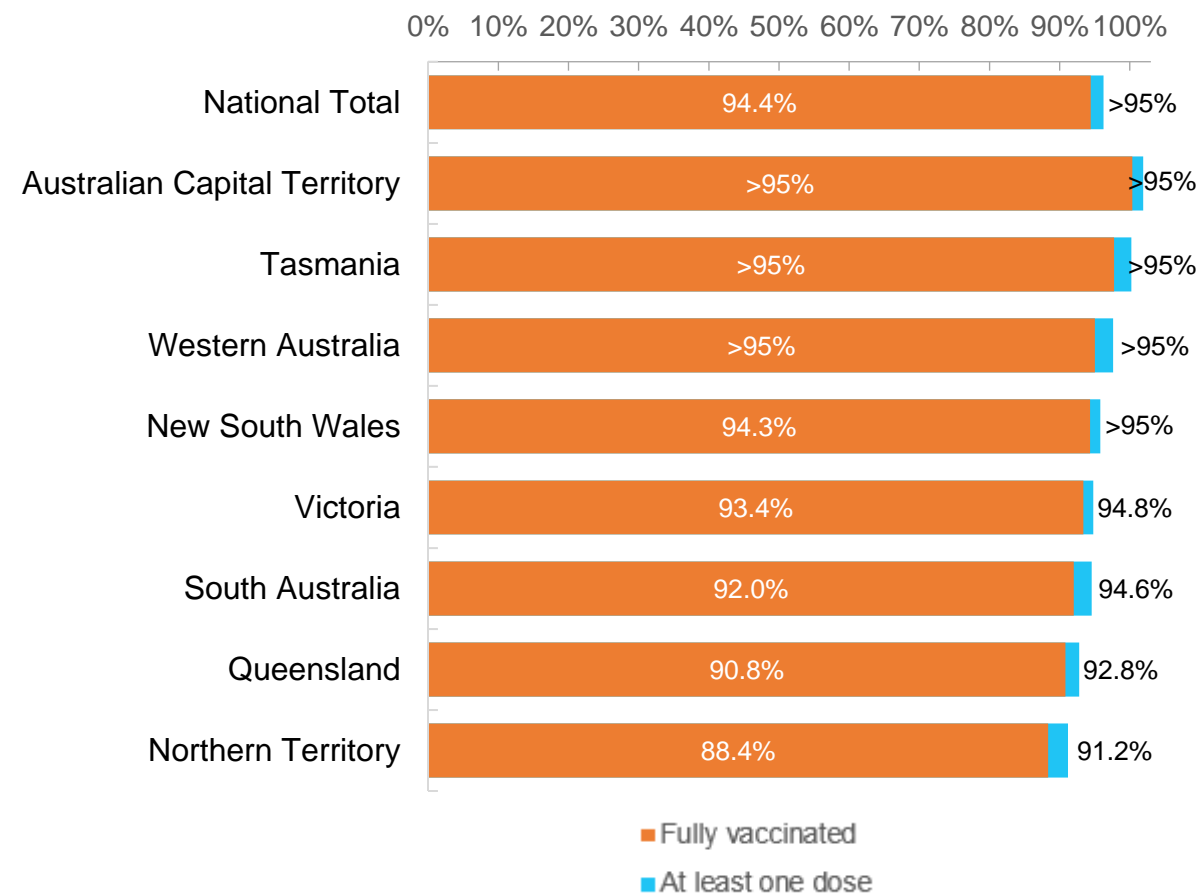


\*Not an indication of percentage vaccinated, numbers will exceed 100 due to multiple doses required per person of the population. All doses are included for those aged 12 and above, and are based on vaccination provider location.

Data as at:  
25 Feb 2022

Australia's COVID-19  
Vaccine Roadmap

First and Second Doses by residential location





# Aboriginal and Torres Strait Islander peoples

## Number of people vaccinated

Data as at:  
22 Feb 2022  
Updated weekly

Australia's COVID-19  
Vaccine Roadmap



**431,220**

people over the age of 16  
have had at least one dose

**83.1%**

of people over the age of 16  
have had at least one dose



**405,102**

people over the age of 16  
are fully vaccinated

**78.0%**

of people over the age of 16 are  
fully vaccinated



**47,614  
(67.1%)**

people aged 12-15 years  
have had at least one dose

### 176 Aboriginal community controlled health services (ACCHS)

0#	50	27	44	12	3	21	19
<b>ACT</b>	<b>NSW</b>	<b>NT</b>	<b>QLD</b>	<b>SA</b>	<b>TAS</b>	<b>VIC</b>	<b>WA</b>

Medicare Address State <sup>##</sup>	Individuals Dose 1	Individuals Dose 1 %	Individuals Dose 2	Individuals Dose 2 %
Australian Capital Territory	4,864	91.3%	4,727	88.7%
New South Wales	134,769	86.5%	131,329	84.3%
Northern Territory	41,851	88.5%	38,873	82.2%
Queensland	113,793	80.3%	106,457	75.1%
South Australia	19,552	78.4%	17,774	71.3%
Tasmania	14,101	88.0%	13,534	84.4%
Victoria	35,162	89.3%	34,237	86.9%
Western Australia	50,742	80.7%	43,986	70.0%
Unknown/Other Territories	16,386	63.4%	14,185	54.9%
<b>Totals</b>	<b>431,220</b>	<b>83.1%</b>	<b>405,102</b>	<b>78.0%</b>

Source: Australian Immunisation Register

\*Identifying as Aboriginal and Torres Strait Islander is optional and the estimated population may be under reported.

\*\*Includes all Aboriginal and Torres Strait Islander peoples who have received a vaccination, not limited to those administered in an ACCHS setting

#ACCHS in the ACT are currently operating as a Commonwealth Vaccine Clinics so not included to avoid double counting

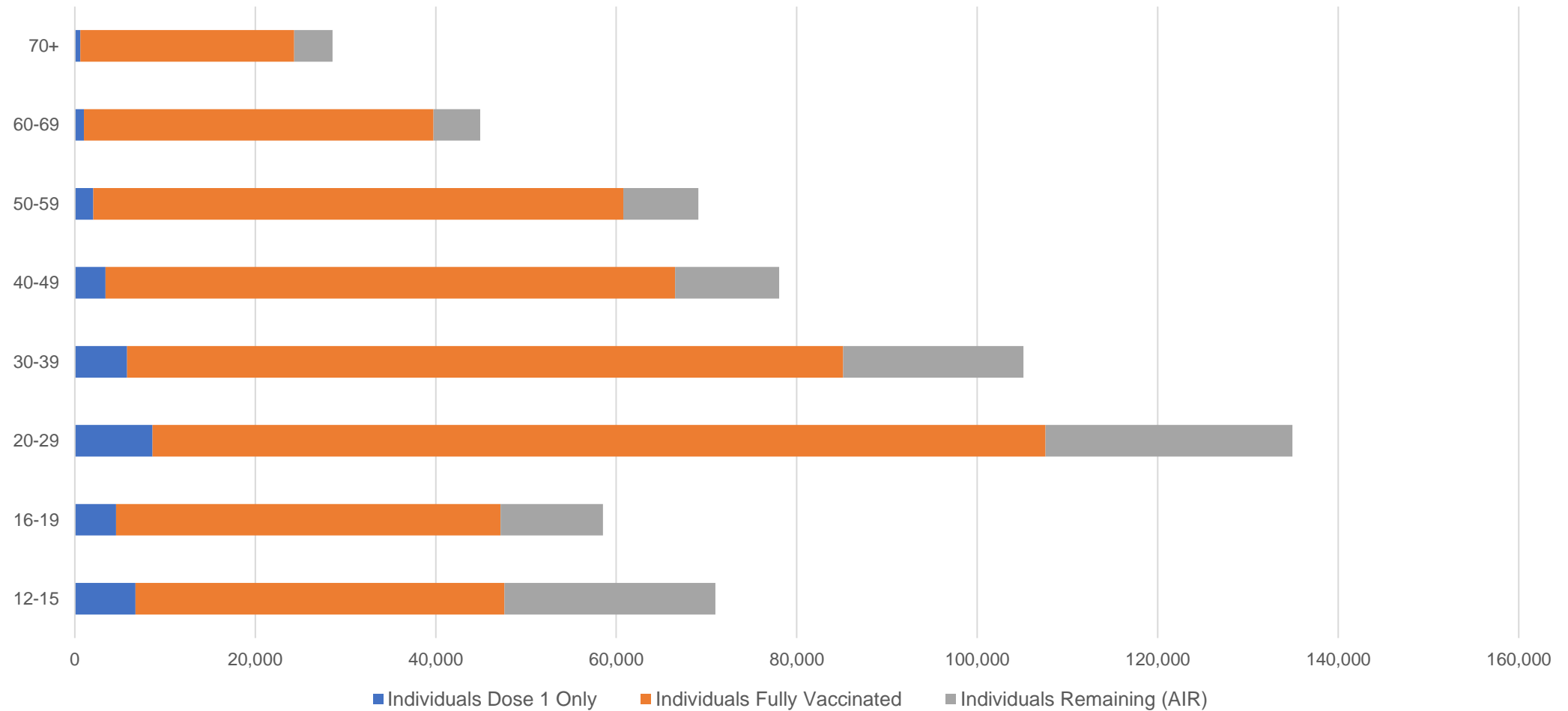
##The above table includes all identified Aboriginal and Torres Strait Islander people who are aged 16 and above by their state of residence.

# Aboriginal and Torres Strait Islander peoples

## Number of people vaccinated by age

Data as at:  
22 Feb 2022  
Updated weekly

Australia's COVID-19  
Vaccine Roadmap



Source: Australian Immunisation Register

# Commonwealth primary care

Data as at:  
25 Feb 2022

Australia's COVID-19  
Vaccine Roadmap



## Primary care vaccine administration sites

<b>5,769</b>	<b>128</b>	<b>176</b>	<b>3,545</b>
GPs	CVCs	ACCHS	Pharmacies



**32,614,920** total vaccine doses administered  
primary care settings as at 25 February  
**+ 95,849** recorded in the last 24 hours

## Primary care vaccinations by provider type

	Doses administered	Daily increase	7 day increase
General Practice* includes other Commonwealth	26,675,519	58,843	381,591
Pharmacy	5,939,401	37,006	213,676

**NSW**  
**11,389,199**  
(+27,733 daily increase)

**VIC**  
**8,147,036**  
(+23,364 daily increase)

**QLD**  
**6,296,470**  
(+15,319 daily increase)

**WA**  
**3,292,342**  
(+18,861 daily increase)

**TAS**  
**596,329**  
(+2,205 daily increase)

**SA**  
**1,931,506**  
(+6,022 daily increase)

**ACT**  
**516,434**  
(+1,164 daily increase)

**NT**  
**195,577**  
(+493 daily increase)

**250,027**

doses administered to persons  
residing in other territories or with  
missing residential information

\*General practice includes Commonwealth Vaccination Clinics, Aboriginal Community Health Centres, Royal Flying Doctor Service and other Commonwealth vaccination facilities

Source: Australian Immunisation Register

Data as at:  
25 Feb 2022

# Commonwealth aged care and disability doses administered



**1,250,625** (+ 1,441 last 24 hours)

Total vaccine doses administered in aged care and disability facilities as at 25 February

Number of doses administered as part of the Commonwealth aged and disability care rollout

**NSW**  
**556,396**  
(+316 daily increase)

**VIC**  
**233,782**  
(+199 daily increase)

**QLD**  
**197,970**  
(+96 daily increase)

**WA**  
**100,856**  
(+455 daily increase)

**TAS**  
**22,321**  
(+73 daily increase)

**SA**  
**83,736**  
(+67 daily increase)

**ACT**  
**16,353**  
(-2# daily increase)

**NT**  
**7,370**  
(+51 daily increase)

**31,841** doses administered to persons residing in other territories or with missing residential information

Source: Australian Immunisation Register

\*Sourced from the Australian Immunisation Register. Includes all persons vaccinated at participating residential aged care, disability and related industry settings.

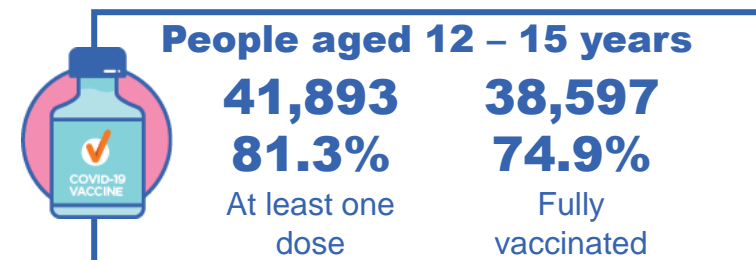
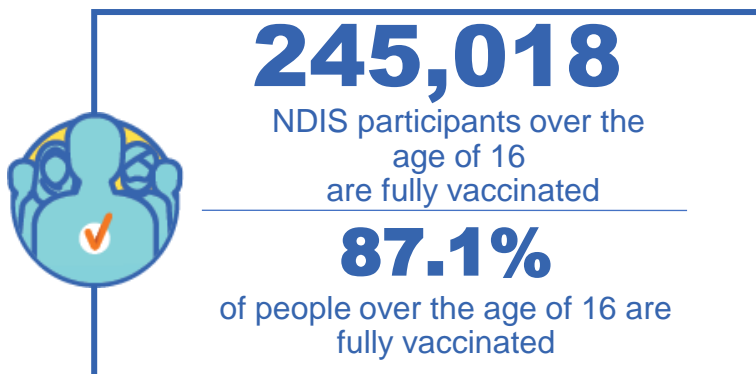
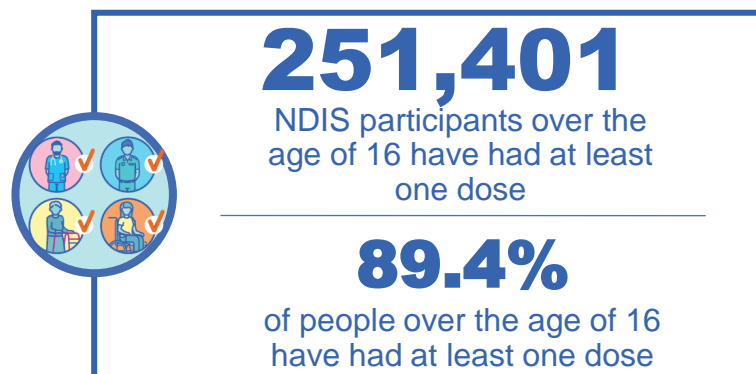
\*\*State level breakdown indicates the residential location and may not align to the state in which the vaccination occurred.

\*Numbers are calculated as difference in daily cumulative reported numbers to allow for historical corrections in all data sources. This can occasionally result in negative numbers, such as for the ACT, where historical details about doses have been updated.

# National Disability Insurance Scheme (NDIS) reported vaccinations

Data as at:  
24 February 2022  
Updated weekly

Australia's COVID-19  
Vaccine Roadmap



## NDIS participant vaccinations

	People aged 16+ with at least one dose	People aged 16+ fully vaccinated	% People aged 16+ with at least one dose	% People aged 16+ fully vaccinated
ACT	4,794	4,722	91.2%	89.8%
NSW	77,732	76,391	89.6%	88.0%
NT	2,187	2,079	80.9%	76.9%
QLD	49,286	47,943	88.7%	86.2%
SA	20,438	19,706	87.1%	84.0%
TAS	6,293	6,077	89.4%	86.3%
VIC	67,084	65,746	90.4%	88.6%
WA	23,587	22,354	89.8%	85.1%
National	251,401	245,018	89.4%	87.1%

Source: Linkage between National Disability Insurance Agency data and the Australian Immunisation Register. Total NDIS participant numbers as at 17th October. Australian Immunisation Register data as at 23 February. Includes all participants regardless of residence type.

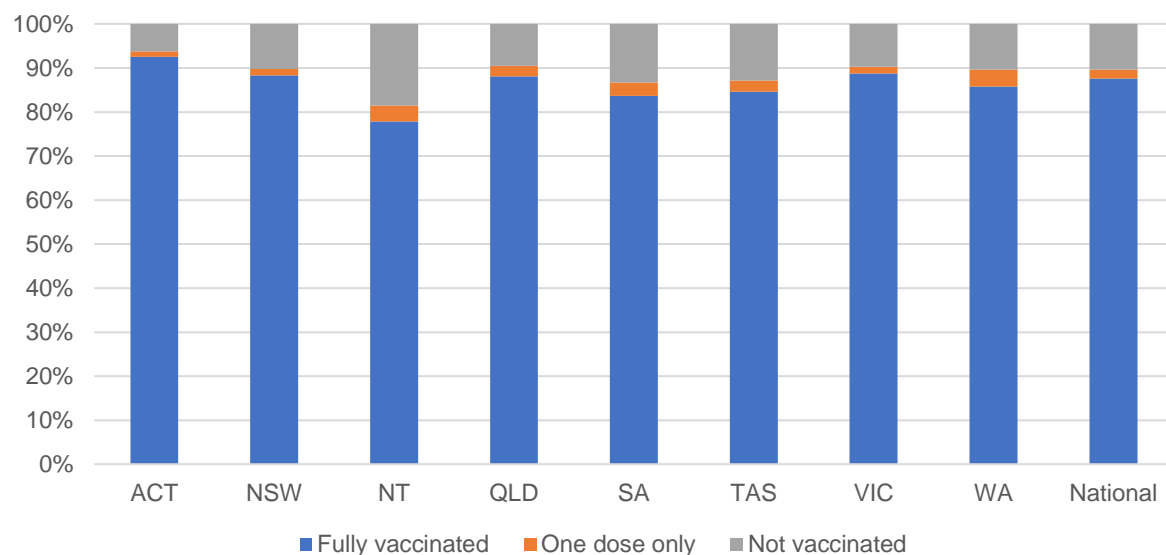
# National Disability Insurance Scheme (NDIS) reported vaccinations

Data as at:  
24 February 2022  
Updated weekly

Australia's COVID-19  
Vaccine Roadmap

NATIONAL	Total people with at least one dose	People fully vaccinated	Total number of individuals in cohort	% People with at least one dose	% People fully vaccinated
NDIS participants living in disability accommodation	20,562	20,115	22,800	90.2%	88.2%

## NDIS participants in disability and aged care accommodation



Source: Linkage between National Disability Insurance Agency data and the Australian Immunisation Register. Includes participants residing in disability accommodation only.

Source: Total NDIS participant numbers as at 17th October. Participant data as at 23 February. Australian Immunisation Register data as at 23 February. Worker data as at 24 February.

## NDIS workforce vaccinations

	NDIS workers with at least one dose	NDIS workers fully vaccinated	% NDIS workers with at least one dose	% NDIS workers fully vaccinated
NSW	120,272	119,703	97.6%	97.1%
VIC	106,884	105,292	98.0%	96.6%
QLD	67,644	66,591	97.2%	95.7%
WA	32,347	30,855	98.1%	93.6%
SA	34,573	33,378	97.6%	94.3%
TAS	10,711	10,574	99.5%	98.2%
ACT	3,528	3,501	99.5%	98.8%
NT	3,248	3,205	99.4%	98.1%
<b>TOTAL</b>	<b>379,207</b>	<b>373,099</b>	<b>97.8%</b>	<b>96.2%</b>

Source: the NDIS Commission has established a requirement for registered NDIS providers who provide intensive disability support services to report on the vaccination status of workers they employ, or otherwise engage, to deliver NDIS-funded supports and services, and who are required to be vaccinated in accordance with in-force state and territory public health orders. The statistics reflect data reported to the NDIS Commission by registered NDIS providers and should be considered indicative and subject to change

Note: Some registered NDIS providers are yet to report on the vaccination status of their workforce. The NDIS Commission is working with those providers around reporting requirements.

Remaining workers not included include those exempt from vaccination requirements, workers whose vaccination status is not yet verified by the provider (such as workers on leave) and provider reporting anomalies.

# Residential aged care vaccination rollout

Residential aged care facilities status

100%

Commonwealth facilities visited (2,541 planned sites)

172,710

People fully vaccinated

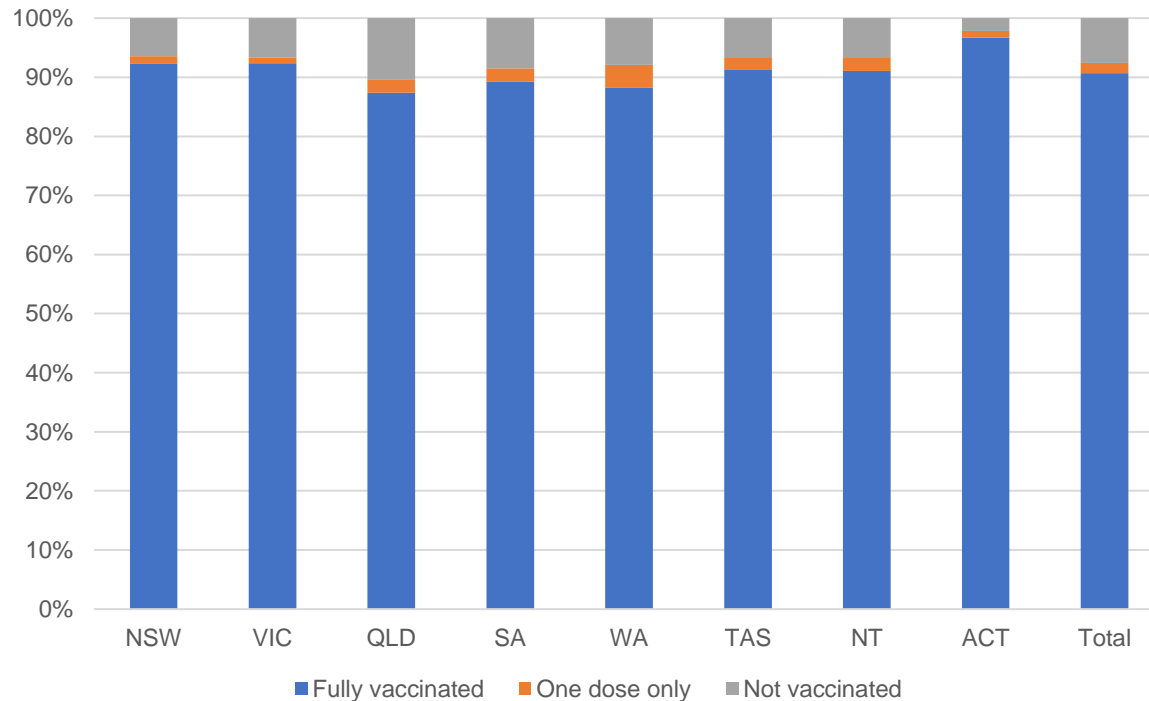
175,975

People with at least one dose

Australia's COVID-19 Vaccine Roadmap

Data as at:  
24 Feb 2022  
Updated weekly

## Aged care resident vaccinations



## Aged care worker vaccinations

Jurisdictions	Total workers with at least one dose	Workers fully vaccinated	% Workers with at least one dose	% Workers fully vaccinated
NSW	78,672	78,654	99.2%	99.2%
VIC	69,348	69,283	98.9%	98.8%
QLD	48,822	48,819	99.0%	99.0%
SA	26,976	26,947	98.4%	98.3%
WA	23,800	23,797	99.1%	99.1%
TAS	7,615	7,615	99.3%	99.3%
NT	878	878	100.0%	100.0%
ACT	3,031	3,031	100.0%	100.0%
Total	259,142	259,024	99.0%	99.0%

Source: My Aged Care Portal vaccination progress

\*Status updates are provided by facilities at least once per week. Reporting is updated Monday to Friday to encompass different facility updates being made on different days.

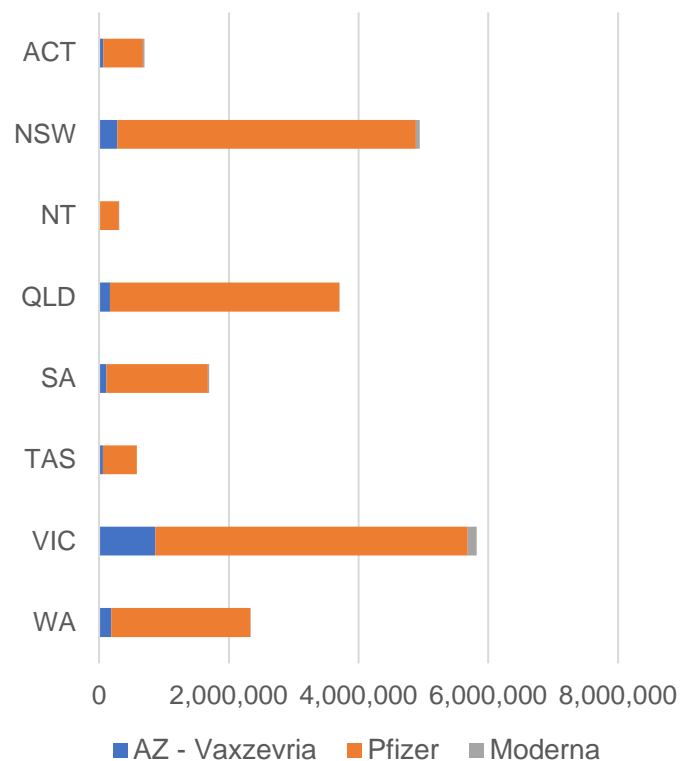
Data is sourced directly from Aged Care Service Providers and is not drawn or closely aligned with data from AIR due to inconsistencies and potential lags in uploading of records.



Data as at:  
25 Feb 2022

## Jurisdiction administered

Total vaccine doses administered in State and Territory clinics as at 25 February



**20,079,978** total vaccine doses administered  
in State and Territory clinics as at 25 February  
+ **25,817** recorded in the last 24 hours  
+ **181,975** recorded in the last 7 days

**NSW**  
**4,943,234**  
(+2,977 daily  
increase)

**VIC**  
**5,819,816**  
(+6,943 daily  
increase)

**QLD**  
**3,703,811**  
(+3,103 daily  
increase)

**WA**  
**2,333,857**  
(+6,645 daily  
increase)

**TAS**  
**582,260**  
(+606 daily  
increase)

**SA**  
**1,694,586**  
(+2,645 daily  
increase)

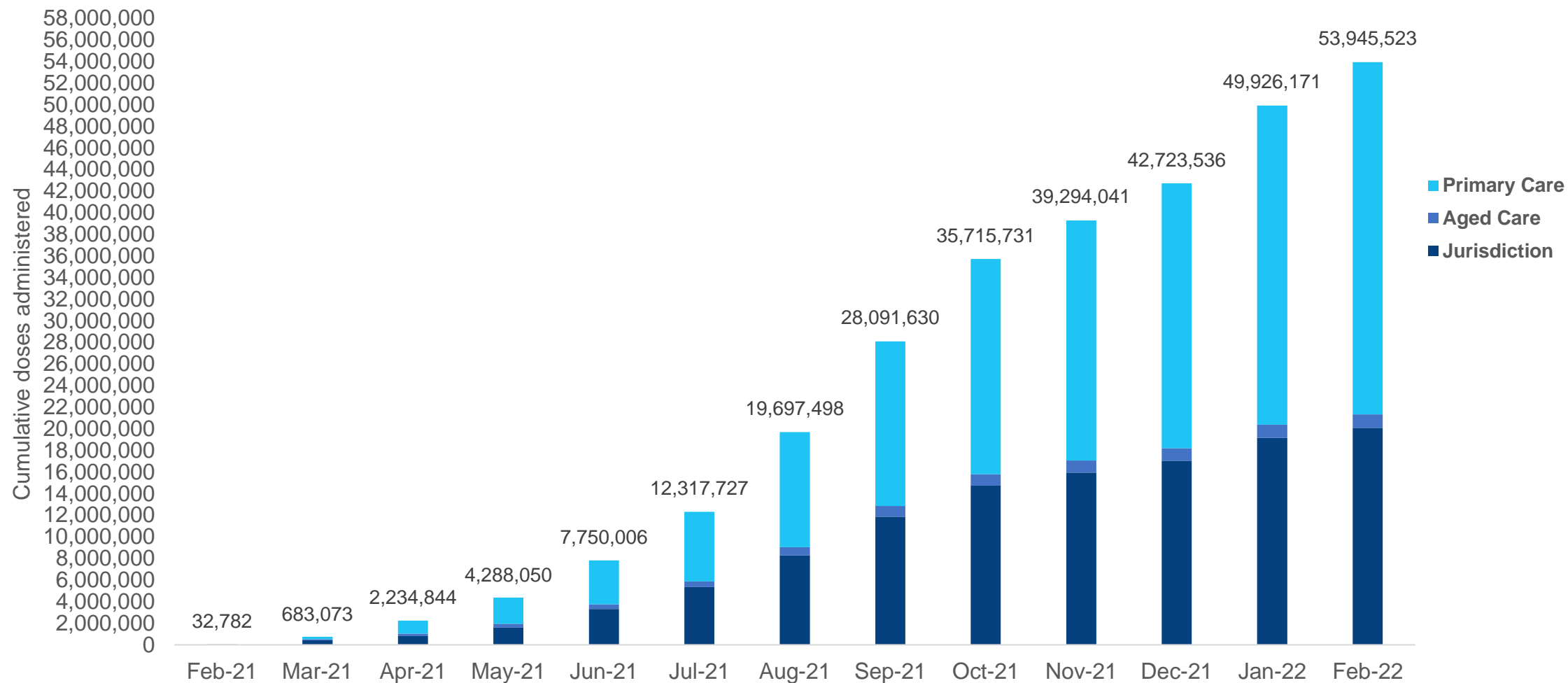
**ACT**  
**697,381**  
(+2,237 daily  
increase)

**NT**  
**305,033**  
(+661 daily  
increase)

\*Sourced from the Australian Immunisation Register. Numbers are calculated as difference in daily cumulative reported numbers to allow for historical corrections.

# Cumulative doses administered by channel

Data as at:  
25 Feb 2022



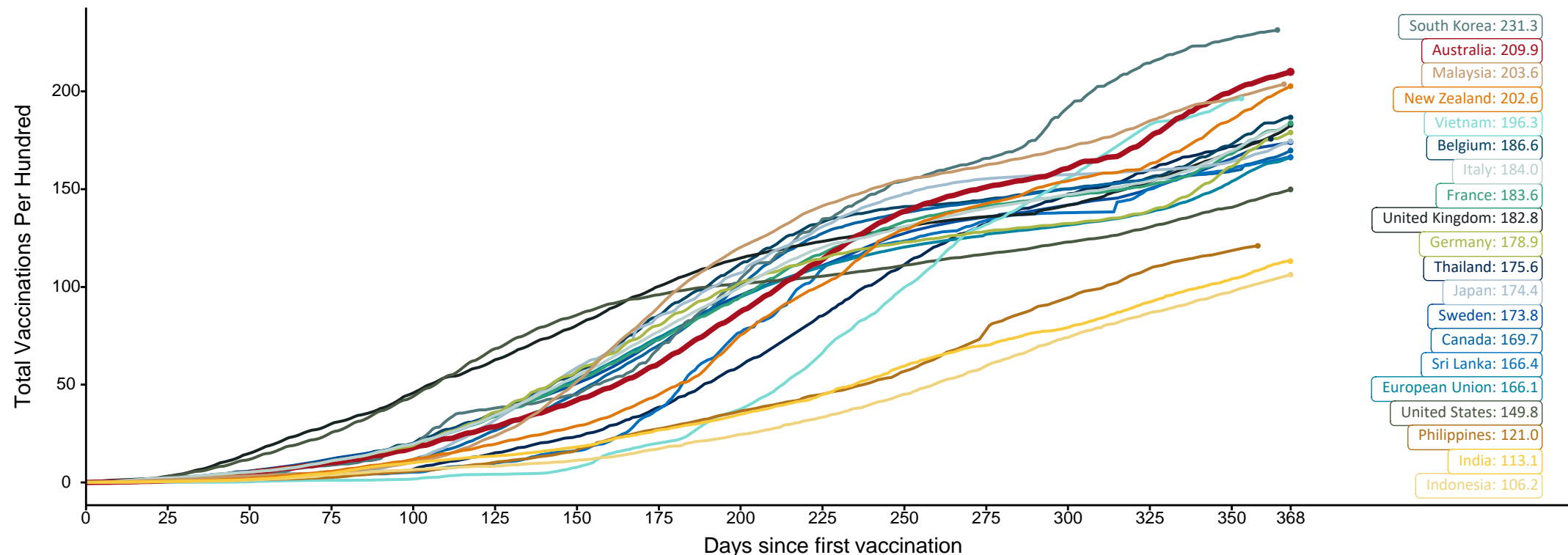
Source: Australian Immunisation Register

## Doses at equivalent stages of rollout (Day 368)

Data as at:  
25 Feb 2022

The x-axis is truncated at the length of Australia's vaccination program. Countries with intermittent reporting have had their doses per 100 imputed to Australia's current stage of rollout. Israel excluded as it is beyond scale of the graph

Cumulative doses administered (25 Feb): **53,945,523**

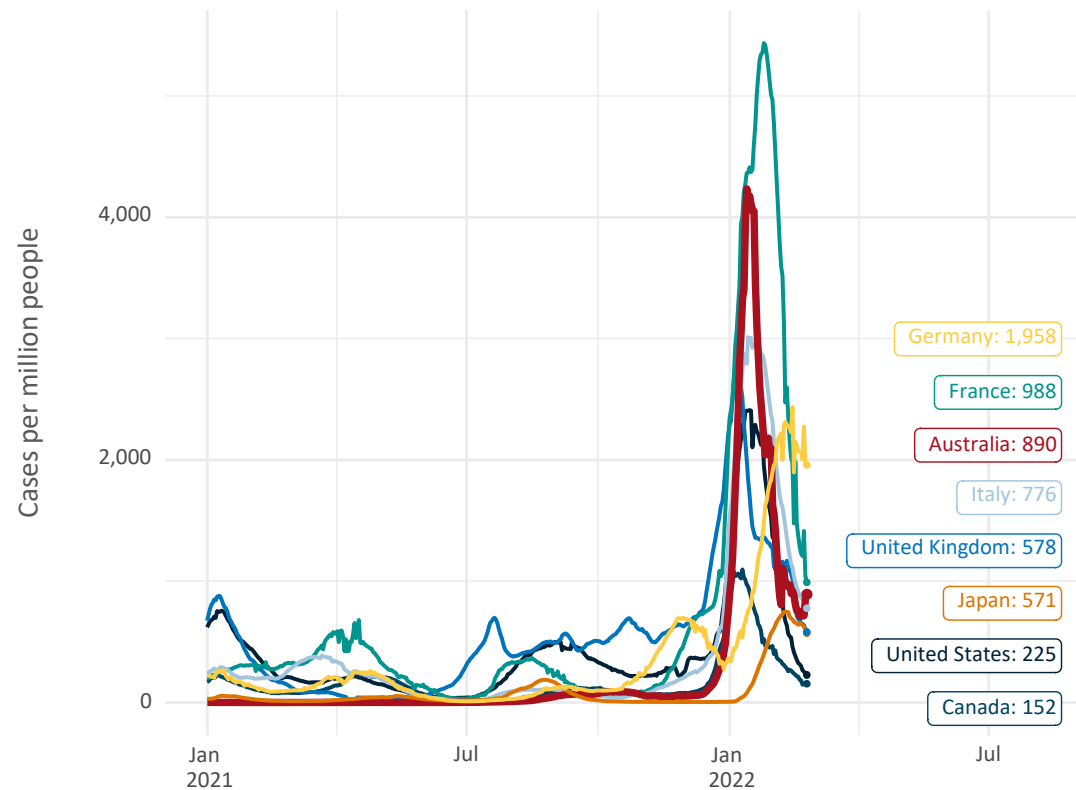


Note: From 15 September 2021, data for Australia includes all doses administered to people 12 and over. Prior to 15 September, data was for 16 and over  
 Due to data revisions, Singapore has been removed from the chart  
 Source: Department of Health (Australia), Our World in Data (international)  
 Latest data: 25 February

Data as at:  
25 Feb 2022

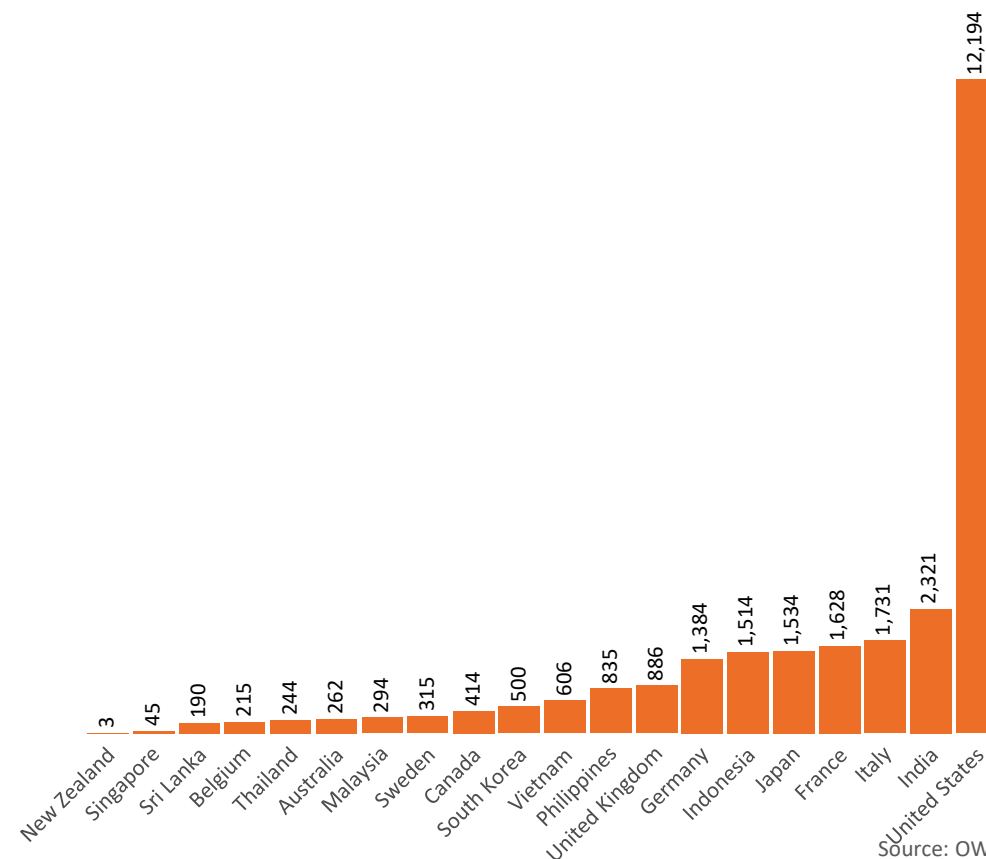
# International data – COVID-19

New daily cases per million in 2021, Australia and G7 countries  
Smoothed - 7 day average



Source: OWID  
Data downloaded: 26 Feb 2022 07:58  
Latest data: 24 Feb 2022

COVID-19 deaths in past 7 days - Australia and select countries



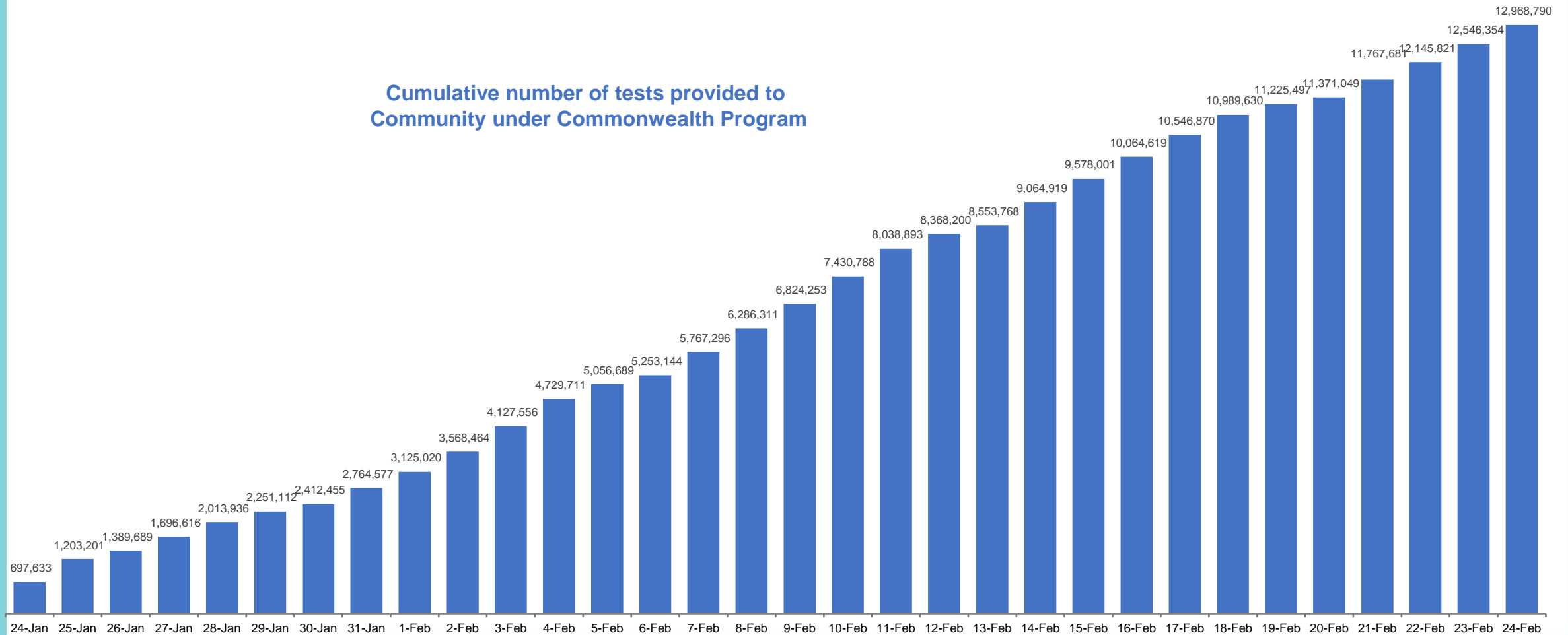
Source: OWID  
Data downloaded: 26 Feb 2022 07:59  
Latest data: 24 Feb 2022

Data as at:  
24 Feb 2022

## Concessional rapid antigen test program

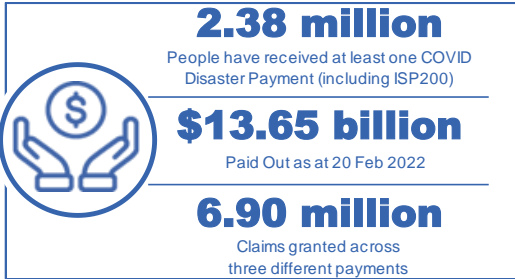
**5,523 pharmacies** have delivered over **12.9 million rapid antigen tests** to over **2.7m eligible concession card holders** under the Government's concessional rapid antigen test program.

Cumulative number of tests provided to  
Community under Commonwealth Program



# Pandemic Response Payments

Data as at midnight: 20 Feb 2022  
Updated weekly



COVID Disaster Payment:	5.89 million claims received - 2.19 million individuals paid a total of \$12.59 billion.
\$200 Income Support Payment:	353,000 claims received - 183,000 individuals paid a total of \$268.9 million.
Pandemic Leave Disaster Payment:	1,069,000 claims received - 719,000 individuals paid a total of \$791.1 million.

## COVID-19 DISASTER PAYMENTS

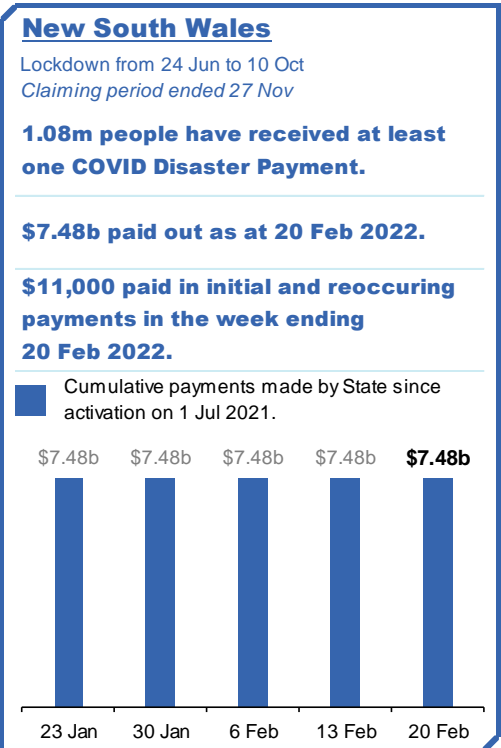
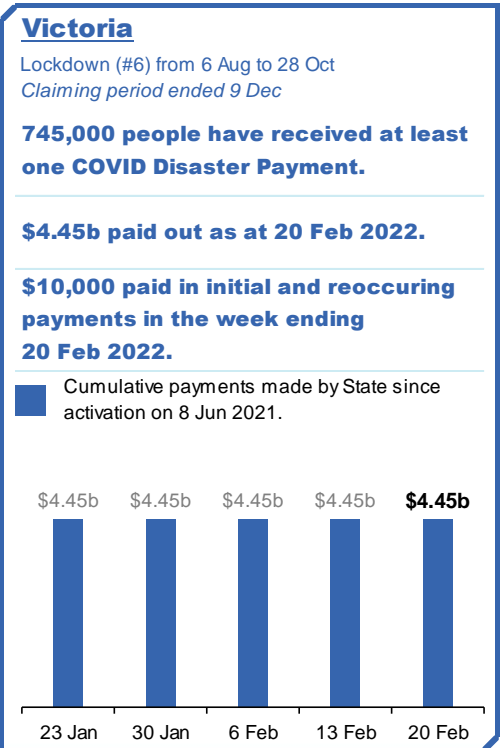
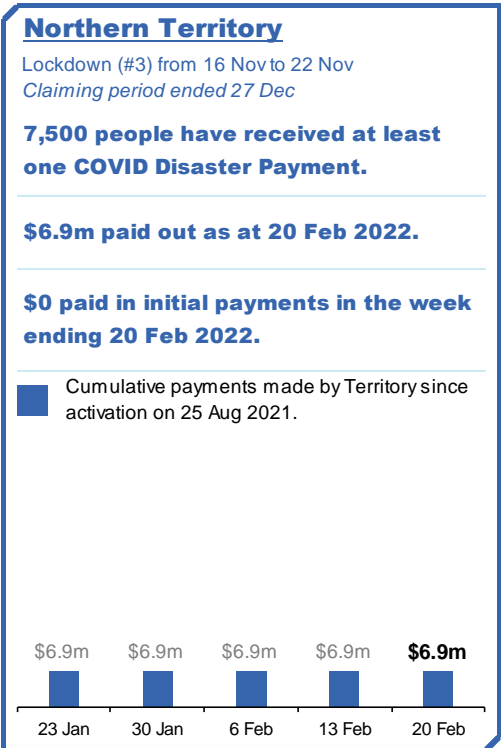
**THREE PAYMENTS AVAILABLE**

**COVID Disaster Payment**  
assisting during a lockdown event in a Commonwealth hotspot.

**Income Support Payment \$200**  
for income support recipients who lost at least 8 hours of work.

**Pandemic Leave Disaster Payment**  
for those who have to self-isolate, quarantine or care.

For more information visit:  
[servicesaustralia.gov.au](https://servicesaustralia.gov.au)



# Pandemic Response Payments (continued)

Data as at midnight: 20 Feb 2022  
Updated weekly

## COVID-19 DISASTER PAYMENTS

### Tasmania

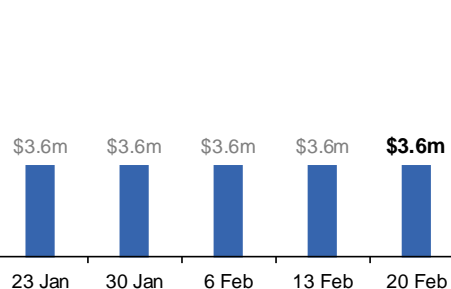
Lockdown from 15 Oct to 18 Oct  
Claiming period ended 12 Nov

**6,900 people have received at least one COVID Disaster Payment.**

**\$3.6m paid out as at 20 Feb 2022.**

**\$0 paid in initial and reoccurring payments in the week ending 20 Feb 2022.**

Cumulative payments made by State since activation on 22 Oct 2021.



### Queensland

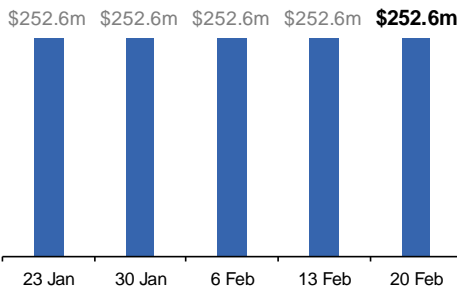
Lockdown from 31 Jul to 11 Aug  
Claiming period ended 28 Aug

**196,000 people have received at least one COVID Disaster Payment.**

**\$252.6m paid out as at 20 Feb 2022.**

**\$0 paid in initial and reoccurring payments in the week ending 20 Feb 2022.**

Cumulative payments made by State since activation on 7 Aug 2021.



### South Australia

Lockdown from 21 to 27 Jul  
Claiming period ended 17 Aug

**86,000 people have received at least one COVID Disaster Payment.**

**\$48.2m paid out as at 20 Feb 2022.**

**\$0 paid in initial and reoccurring payments in the week ending 20 Feb 2022.**

Cumulative payments made by State since activation on 28 Jul 2021.

