



Australian Government
Operation COVID Shield

COVID-19 Vaccine Roll-out

24 February 2022

Data as at:
23 Feb 2022

Total vaccine doses



53,697,719 total vaccine doses administered nationally as at 23 February
+125,035 recorded in the last 24 hours



19,835,241

people have had at least one dose

>95%

of people over the age of 16 have had at least one dose



19,455,450

people are fully vaccinated

94.4%

of people over the age of 16 are fully vaccinated



11,155,371

people over the age of 16 who have received more than two doses

NSW
16,808,928
(+29,918 daily increase)

VIC
14,203,296
(+31,469 daily increase)

QLD
10,234,482
(+20,649 daily increase)

WA
5,696,885
(+24,726 daily increase)

TAS
1,190,979
(+3,196 daily increase)

SA
3,684,224
(+9,500 daily increase)

ACT
1,360,119
(+4,366 daily increase)

NT
518,806
(+1,211 daily increase)

*Administration state breakdown indicates state in which a vaccine was administered

**Overall dose count includes instances of more than two doses per person in a small number of cases.

Source: Australian Immunisation Register

Booster Vaccinations

Data as at:
23 Feb 2022



11,155,371 total people over the age of 16 years old
who have received more than two doses nationally

+104,040 people who have received more than two doses
nationally in the last 24 hours

NSW
3,483,120
(26,975 daily
increase)

VIC
3,042,823
(28,030 daily
increase)

QLD
1,953,591
(16,596 daily
increase)

WA
1,243,467
(18,740 daily
increase)

TAS
244,686
(2,699 daily
increase)

SA
788,145
(7,488 daily
increase)

ACT
232,993
(1,541 daily
increase)

NT
88,754
(952 daily
increase)

77,792 doses administered to persons
residing in other territories or with
missing residential information

Source: Australian Immunisation Register

Data as at:
23 Feb 2022

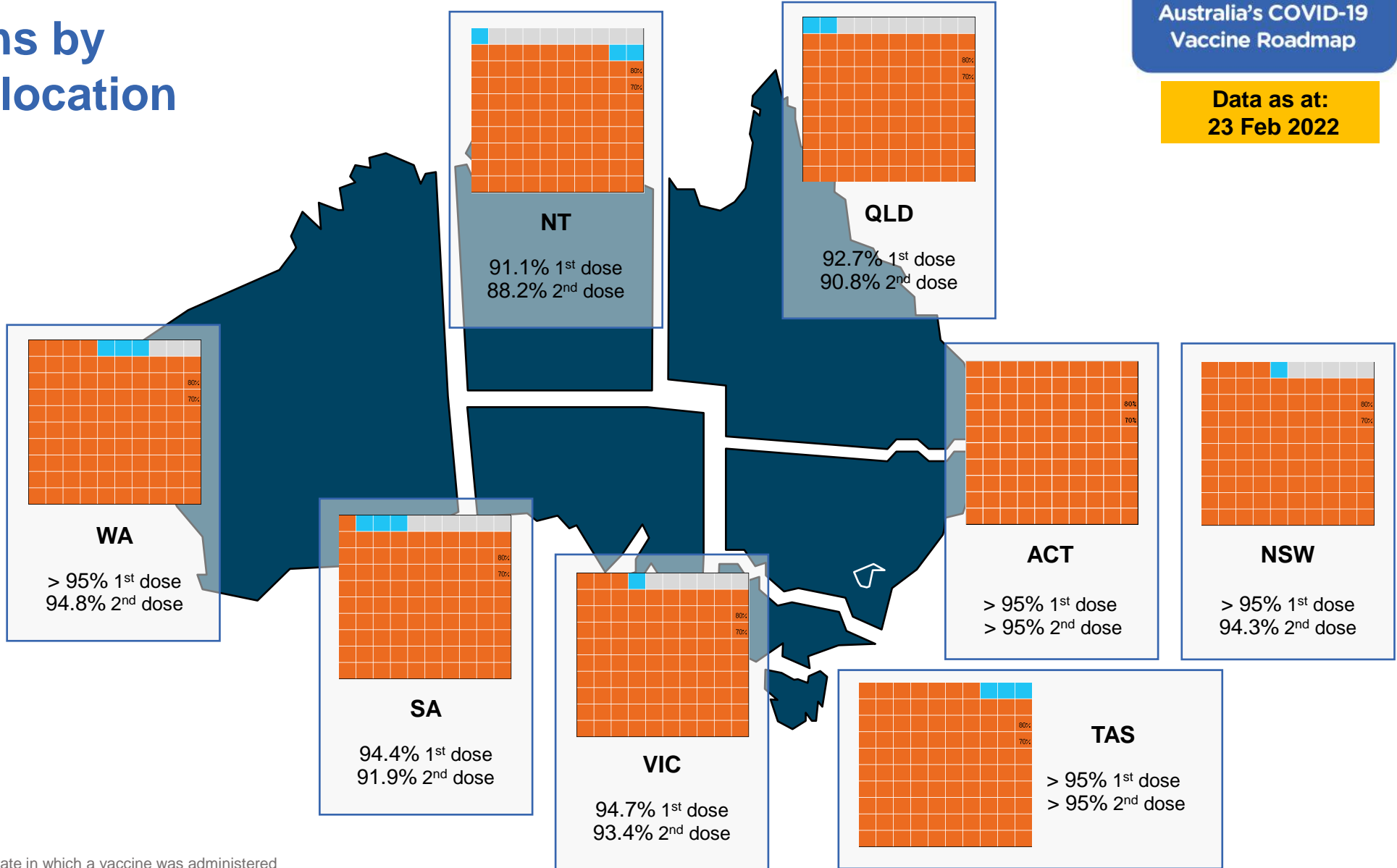
Vaccinations by residential location

First doses

Age	Today	4 weeks ago	8 weeks ago
16+	>95%	>95%	94.7%
50+	>95%	>95%	>95%
70+	>95%	>95%	>95%

Fully vaccinated

Age	Today	4 weeks ago	8 weeks ago
16+	94.4%	93.3%	91.8%
50+	>95%	>95%	>95%
70+	>95%	>95%	>95%



*Residential state may differ from the state in which a vaccine was administered

Commonwealth and Jurisdiction vaccine doses administered

Data as at:
23 Feb 2022



53,697,719 total vaccine doses administered nationally as at 23 February

+ 125,035 recorded in the last 24 hours

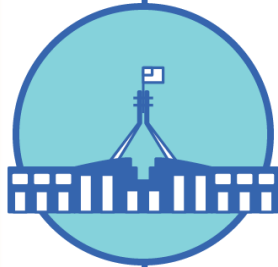


20,029,656

doses administered by state and territory facilities

+ 22,134

recorded in the last 24 hours



33,668,063

doses administered by commonwealth facilities

+ 102,901

recorded in the last 24 hours

32,420,160 total vaccine doses administered in primary care settings

1,247,903 total vaccine doses administered in aged care and disability settings

NSW	Jurisdictions	Commonwealth
Cumulative	4,937,965	11,870,963
Daily increase	-803*	30,721

VIC	Jurisdictions	Commonwealth
Cumulative	5,806,772	8,396,524
Daily increase	6,750	24,719

QLD	Jurisdictions	Commonwealth
Cumulative	3,697,328	6,537,154
Daily increase	3,388	17,261

WA	Jurisdictions	Commonwealth
Cumulative	2,320,669	3,376,216
Daily increase	6,053	18,673

TAS	Jurisdictions	Commonwealth
Cumulative	581,140	609,839
Daily increase	641	2,555

SA	Jurisdictions	Commonwealth
Cumulative	1,689,457	1,994,767
Daily increase	2,869	6,631

ACT	Jurisdictions	Commonwealth
Cumulative	692,587	667,532
Daily increase	2,673	1,693

NT	Jurisdictions	Commonwealth
Cumulative	303,738	215,068
Daily increase	563	648

*A historical data correction has resulted in the migration of some records from Aged Care to Primary Care reporting channel.

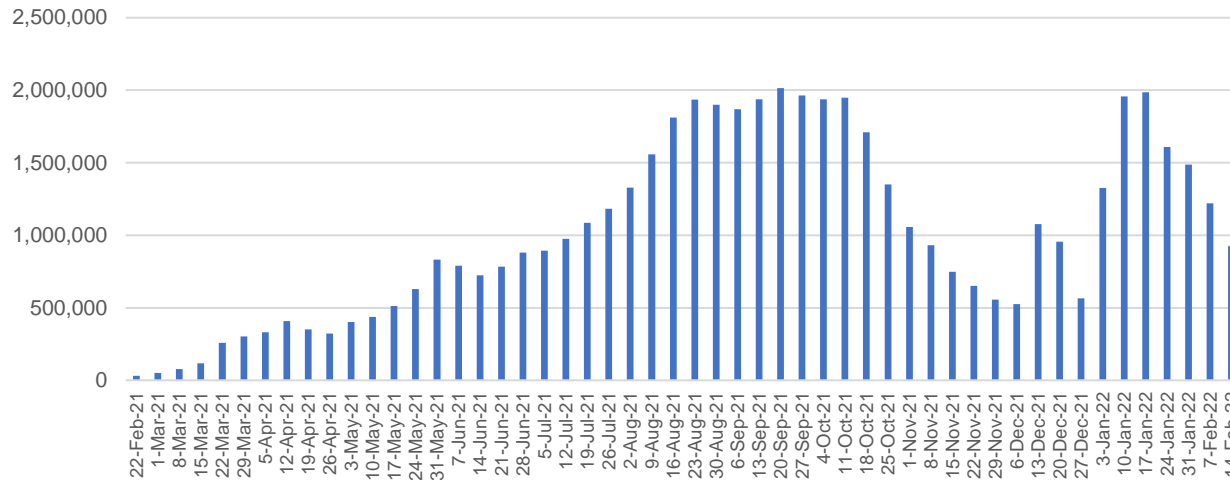
Source: Australian Immunisation Register

Vaccine milestone charts

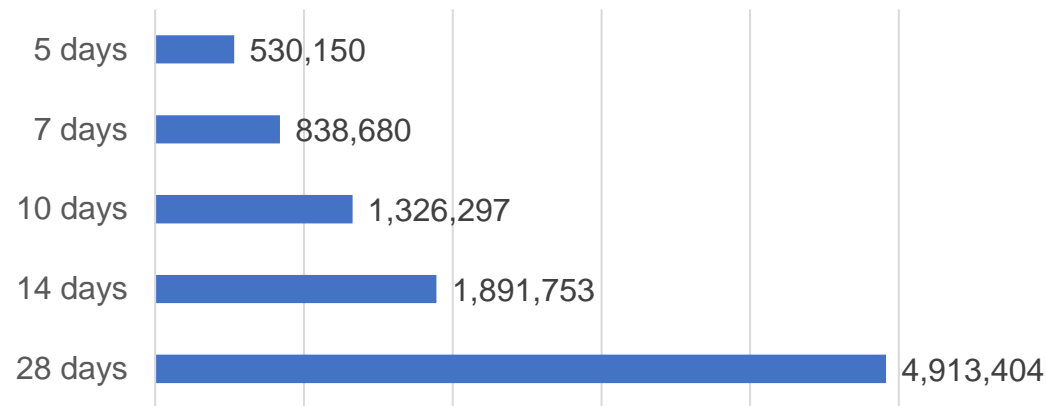
Data as at:
23 Feb 2022

Australia's COVID-19
Vaccine Roadmap

Doses Administered by Week

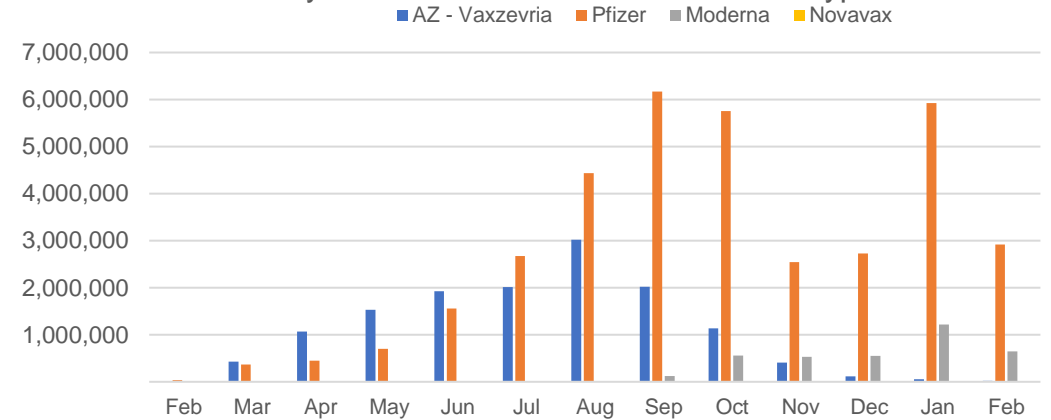


Doses Reported

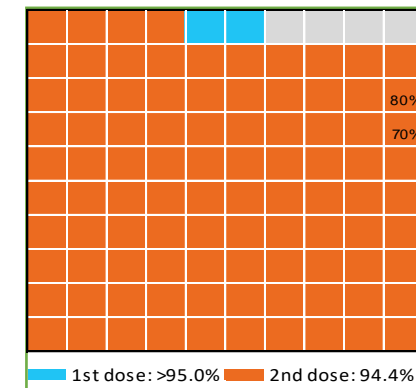


*Sourced from the Australian Immunisation Register.

Doses by administration month and vaccine type



Eligible population percentage coverage



*Each square represents 1% of the national population. Squares are filled as milestones are achieved.

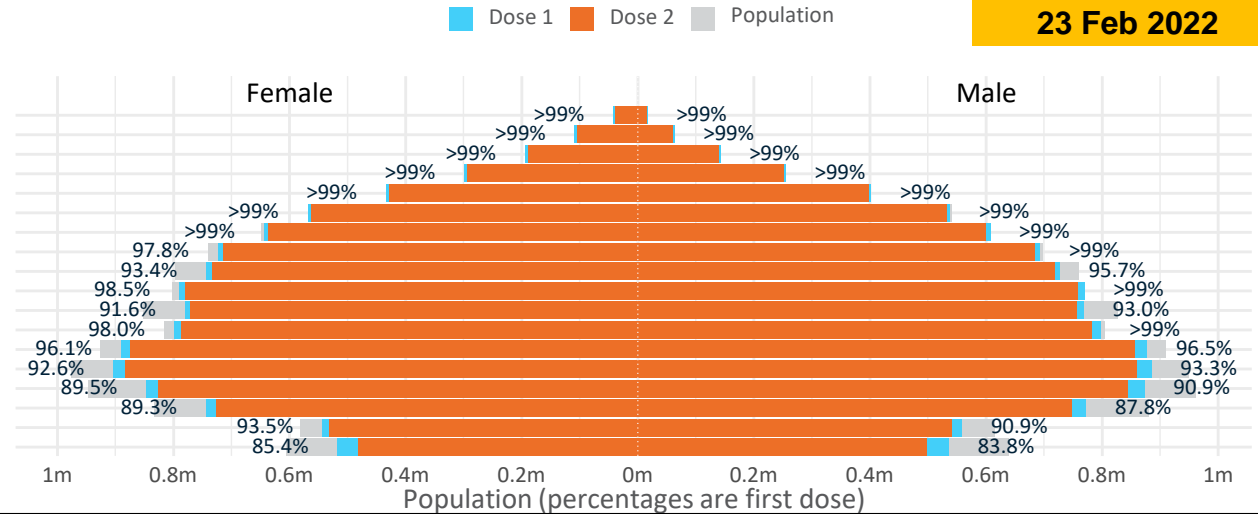
Doses by age and sex

First and second doses by age and sex

Data as at:
23 Feb 2022

	16+	50+	12-15	5-11
Dose 1	96.19% (19,835,241 doses / 20,619,959 people)	>99% (8,764,218 doses / 8,749,703 people)	84.64% (1,052,919 doses / 1,243,990 people)	49.52% (1,127,327 doses / 2,276,638 people)
Dose 2	94.35% (19,455,450 doses / 20,619,959 people)	98.78% (8,643,278 doses / 8,749,703 people)	78.70% (979,068 doses / 1,243,990 people)	0.71% (16,070 doses / 2,276,638 people)

Age	Dose 1	Dose 2
95+	58,206 (>99%)	54,691 (>99%)
90-94	171,618 (>99%)	165,429 (>99%)
85-89	336,021 (>99%)	328,013 (>99%)
80-84	553,917 (>99%)	545,342 (>99%)
75-79	835,759 (>99%)	826,081 (>99%)
70-74	1,107,070 (>99%)	1,094,662 (>99%)
65-69	1,252,589 (>99%)	1,237,000 (98.3%)
60-64	1,417,650 (98.7%)	1,399,634 (97.4%)
55-59	1,471,427 (94.6%)	1,452,742 (93.4%)
50-54	1,559,961 (>99%)	1,539,684 (98.4%)
45-49	1,549,868 (92.4%)	1,527,381 (91.1%)
40-44	1,598,775 (98.7%)	1,570,292 (96.9%)
35-39	1,771,832 (96.6%)	1,734,673 (94.5%)
30-34	1,796,242 (93.4%)	1,749,543 (90.9%)
25-29	1,729,645 (90.7%)	1,678,532 (88.0%)
20-24	1,521,899 (88.9%)	1,478,814 (86.4%)
16-19	1,102,762 (92.2%)	1,072,937 (89.7%)
12-15	1,052,919 (84.6%)	979,068 (78.7%)



	AUS	ACT	NSW	NT	QLD	SA	TAS	VIC	WA
16 and over - dose 1	19,835,241	350,446	6,286,406	173,644	3,812,053	1,360,421	440,740	5,122,749	2,060,854
16 and over - dose 2	19,455,450	345,212	6,192,284	168,176	3,732,344	1,323,697	429,905	5,048,266	2,005,267
16 and over - population	20,619,959*	344,037	6,565,651	190,571	4,112,707	1,440,400	440,172	5,407,574	2,114,978
16 and over % with dose 1	96.19%	>99%	95.75%	91.12%	92.69%	94.45%	>99%	94.73%	97.44%
16 and over % with dose 2	94.35%	>99%	94.31%	88.25%	90.75%	91.90%	97.67%	93.36%	94.81%
5 to 11 - dose 1	1,127,327	30,836	337,257	12,486	202,797	80,917	27,654	311,953	116,500
5 to 11 - dose 2	16,070	240	6,687	109	2,654	391	77	5,108	695
5 to 11 - population	2,276,638	39,789	716,460	24,750	478,731	148,816	45,033	578,499	244,154
5 to 11 % with dose 1	49.52%	77.50%	47.07%	50.45%	42.36%	54.37%	61.41%	53.92%	47.72%
5 to 11 % with dose 2	0.71%	0.60%	0.93%	0.44%	0.55%	0.26%	0.17%	0.88%	0.28%
12 to 15 - dose 1	1,052,919	20,085	326,247	10,904	207,741	68,159	22,851	276,063	111,590
12 to 15 - dose 2	979,068	19,178	308,476	9,613	190,687	62,993	21,160	261,371	97,654
12 to 15 - population	1,243,990	19,693	390,330	13,060	270,146	82,747	26,308	308,611	132,869
12 to 15 % with dose 1	84.64%	>99%	83.58%	83.49%	76.90%	82.37%	86.86%	89.45%	83.98%
12 to 15 % with dose 2	78.70%	97.38%	79.03%	73.61%	70.59%	76.13%	80.43%	84.69%	73.50%

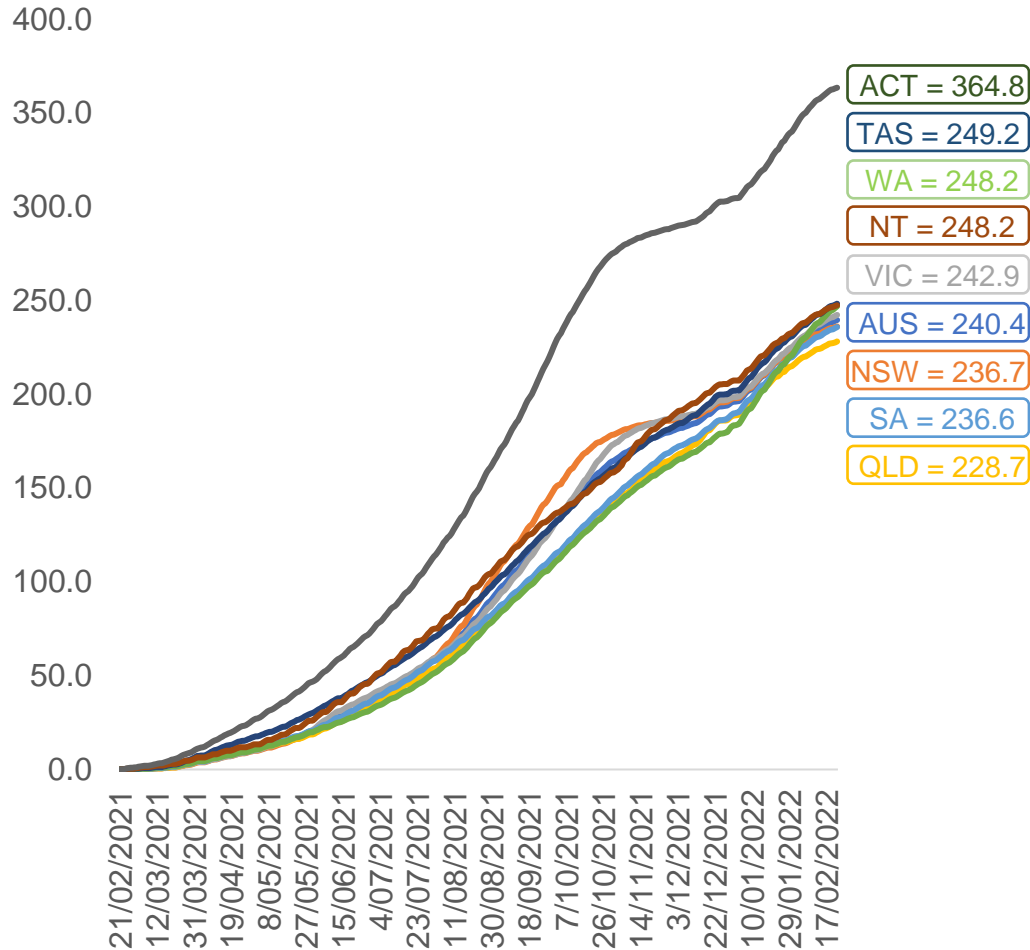
*National population will not equal sum of listed jurisdictions due to a small number of people counted in national population residing in some 'other' territories. Sum of state doses will not add to national total as some records are unable to be geocoded to a State or Territory. Doses sourced from Australian Immunisation Register, population from ABS ERP June 2020

Vaccinations by location

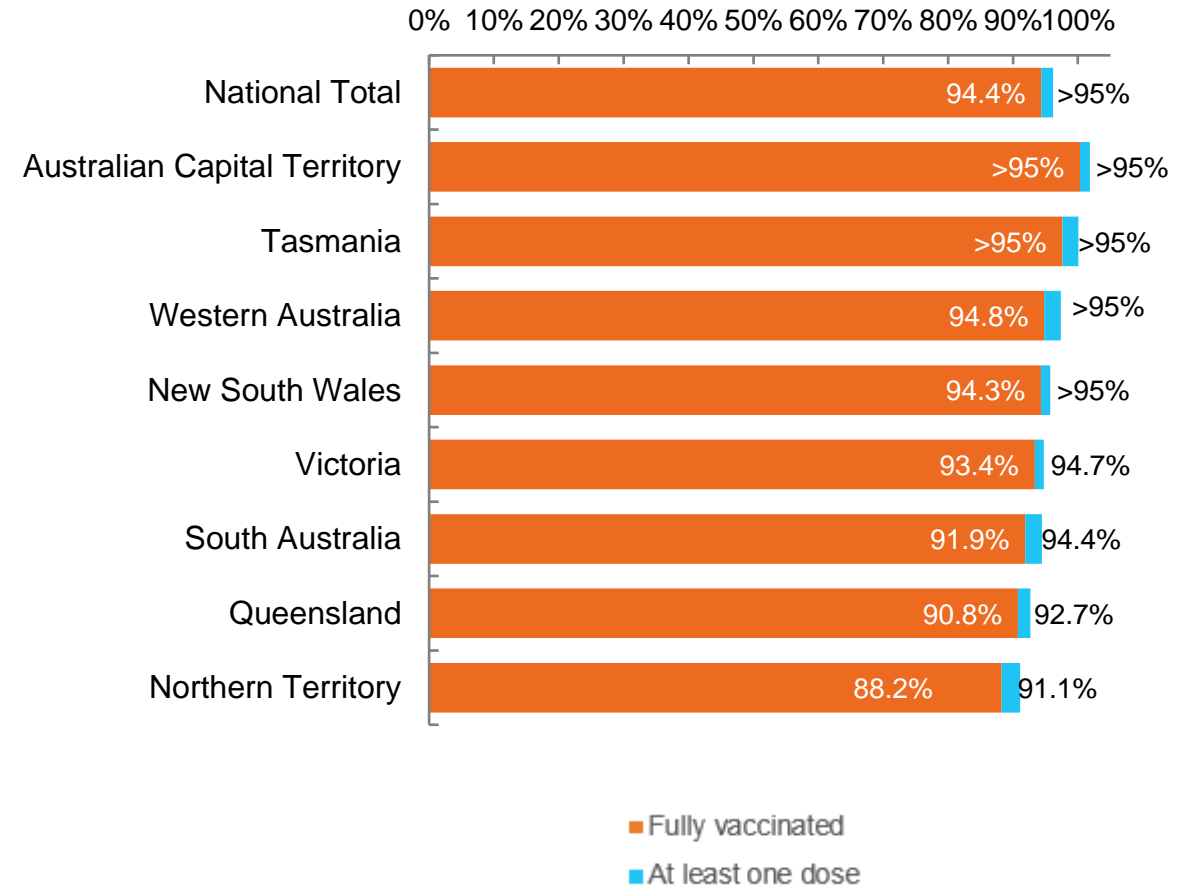
Data as at:
23 Feb 2022

Australia's COVID-19
Vaccine Roadmap

Cumulative total doses administered vs eligible state populations*



First and Second Doses by residential location



*Not an indication of percentage vaccinated, numbers will exceed 100 due to multiple doses required per person of the population. All doses are included for those aged 12 and above, and are based on vaccination provider location.

Aboriginal and Torres Strait Islander peoples

Number of people vaccinated

Data as at:
22 Feb 2022
Updated weekly

Australia's COVID-19
Vaccine Roadmap



431,220

people over the age of 16
have had at least one dose

83.1%

of people over the age of 16
have had at least one dose



405,102

people over the age of 16
are fully vaccinated

78.0%

of people over the age of 16 are
fully vaccinated



**47,614
(67.1%)**

people aged 12-15 years
have had at least one dose

176 Aboriginal community controlled health services (ACCHS)

0#	50	27	44	12	3	21	19
ACT	NSW	NT	QLD	SA	TAS	VIC	WA

Medicare Address State ^{##}	Individuals Dose 1	Individuals Dose 1 %	Individuals Dose 2	Individuals Dose 2 %
Australian Capital Territory	4,864	91.3%	4,727	88.7%
New South Wales	134,769	86.5%	131,329	84.3%
Northern Territory	41,851	88.5%	38,873	82.2%
Queensland	113,793	80.3%	106,457	75.1%
South Australia	19,552	78.4%	17,774	71.3%
Tasmania	14,101	88.0%	13,534	84.4%
Victoria	35,162	89.3%	34,237	86.9%
Western Australia	50,742	80.7%	43,986	70.0%
Unknown/Other Territories	16,386	63.4%	14,185	54.9%
Totals	431,220	83.1%	405,102	78.0%

Source: Australian Immunisation Register

*Identifying as Aboriginal and Torres Strait Islander is optional and the estimated population may be under reported.

**Includes all Aboriginal and Torres Strait Islander peoples who have received a vaccination, not limited to those administered in an ACCHS setting

#ACCHS in the ACT are currently operating as a Commonwealth Vaccine Clinics so not included to avoid double counting

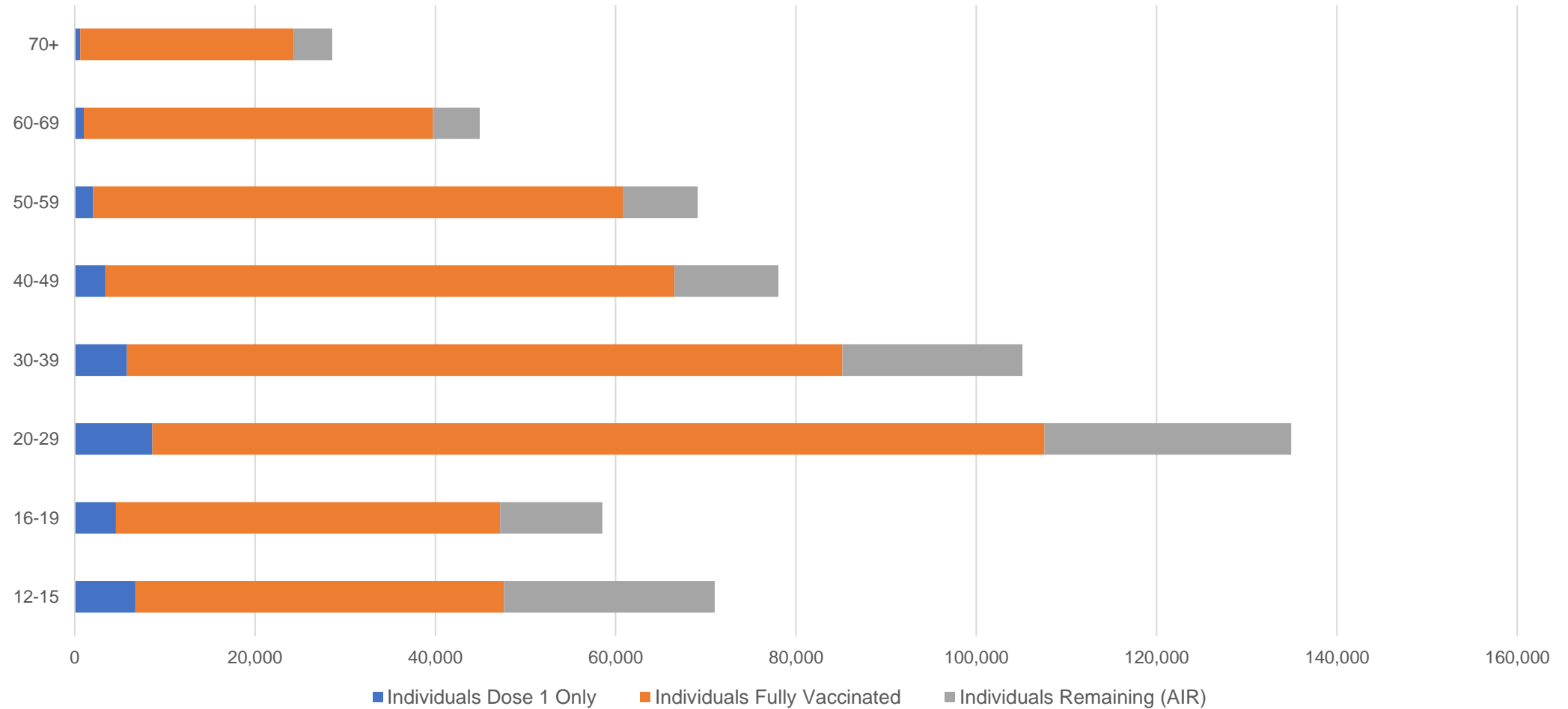
##The above table includes all identified Aboriginal and Torres Strait Islander people who are aged 16 and above by their state of residence.

Aboriginal and Torres Strait Islander peoples

Number of people vaccinated by age

Data as at:
22 Feb 2022
Updated weekly

Australia's COVID-19
Vaccine Roadmap



Source: Australian Immunisation Register

Commonwealth primary care

Data as at:
23 Feb 2022

Australia's COVID-19
Vaccine Roadmap



Primary care vaccine administration sites

5,769	128	176	3,545
GPs	CVCs	ACCHS	Pharmacies



32,420,160 total vaccine doses administered
primary care settings as at 23 February
+ 107,738 recorded in the last 24 hours

Primary care vaccinations by provider type

	Doses administered	Daily increase	7 day increase
General Practice* includes other Commonwealth	26,553,134	71,910	416,246
Pharmacy	5,867,026	35,828	227,734



248,580

doses administered to persons residing in other territories or with missing residential information

*General practice includes Commonwealth Vaccination Clinics, Aboriginal Community Health Centres, Royal Flying Doctor Service and other Commonwealth vaccination facilities

Source: Australian Immunisation Register

Data as at:
23 Feb 2022

Commonwealth aged care and disability doses administered



1,247,903 (- 4,837# last 24 hours)

Total vaccine doses administered in aged care and disability facilities as at 23 February

Number of doses administered as part of the Commonwealth aged and disability care rollout

NSW
555,951
(+206 daily increase)

VIC
233,331
(-5,546# daily increase)

QLD
197,633
(+51 daily increase)

WA
99,976
(+305 daily increase)

TAS
22,223
(+24 daily increase)

SA
83,604
(+51 daily increase)

ACT
16,336
(-5# daily increase)

NT
7,298
(+47 daily increase)

31,551

doses administered to persons residing in other territories or with missing residential information

*Sourced from the Australian Immunisation Register. Includes all persons vaccinated at participating residential aged care, disability and related industry settings.

**State level breakdown indicates the residential location and may not align to the state in which the vaccination occurred.

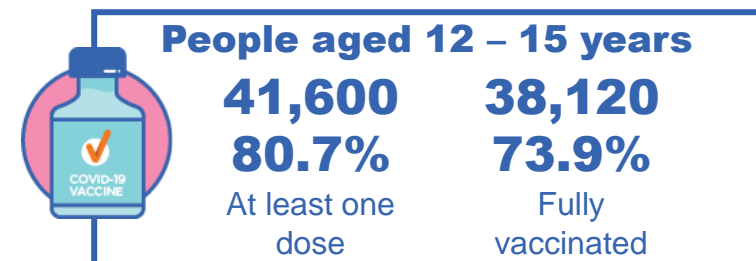
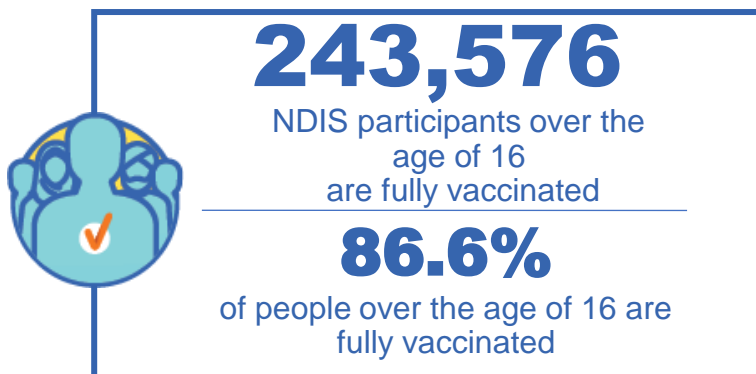
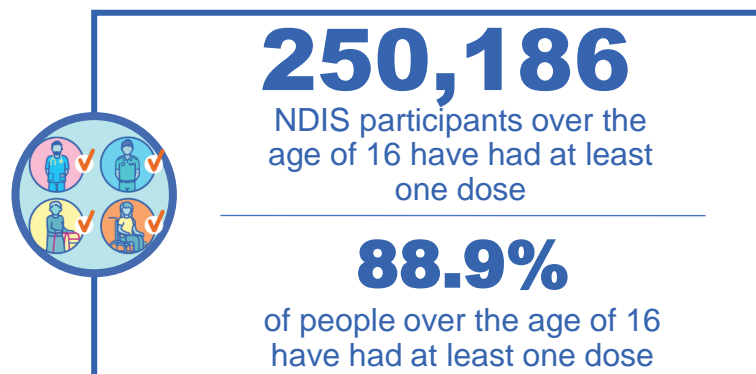
A historical data correction has resulted in the migration of some records from Aged Care to Primary Care reporting channel.

Source: Australian Immunisation Register

National Disability Insurance Scheme (NDIS) reported vaccinations

Data as at:
17 February 2022
Updated weekly

Australia's COVID-19
Vaccine Roadmap



NDIS participant vaccinations

	People aged 16+ with at least one dose	People aged 16+ fully vaccinated	% People aged 16+ with at least one dose	% People aged 16+ fully vaccinated
ACT	4,785	4,714	91.0%	89.7%
NSW	77,542	76,177	89.4%	87.8%
NT	2,171	2,062	80.3%	76.2%
QLD	48,996	47,592	88.1%	85.6%
SA	20,307	19,544	86.6%	83.3%
TAS	6,252	6,023	88.8%	85.6%
VIC	66,808	65,484	90.1%	88.3%
WA	23,325	21,980	88.8%	83.6%
National	250,186	243,576	88.9%	86.6%

Source: Linkage between National Disability Insurance Agency data and the Australian Immunisation Register. Total NDIS participant numbers as at 17th October. Australian Immunisation Register data as at 16 February. Includes all participants regardless of residence type.

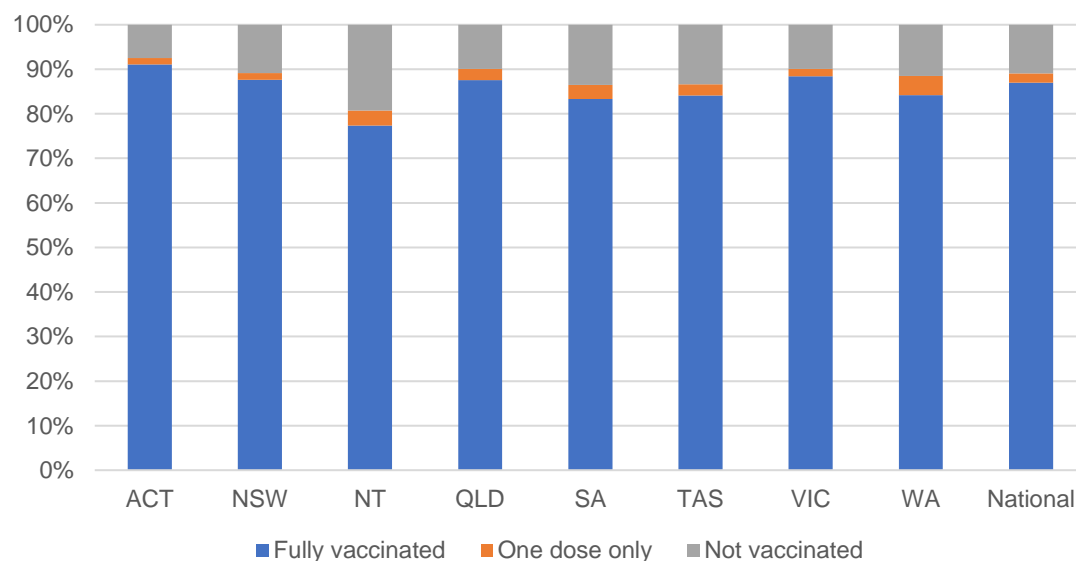
National Disability Insurance Scheme (NDIS) reported vaccinations

Data as at:
17 February 2022
Updated Weekly

Australia's COVID-19
Vaccine Roadmap

NATIONAL	Total people with at least one dose	People fully vaccinated	Total number of individuals in cohort	% People with at least one dose	% People fully vaccinated
NDIS participants living in disability accommodation	20,386	19,920	22,800	89.4%	87.4%

NDIS participants in disability and aged care accommodation



Source: Linkage between National Disability Insurance Agency data and the Australian Immunisation Register. Includes participants residing in disability accommodation only.
Source: Total NDIS participant numbers as at 17th October. Participant data as at 15 February. Australian Immunisation Register data as at 16 February. Worker data as at 17 February.

NDIS workforce vaccinations

	NDIS workers with at least one dose	NDIS workers fully vaccinated	% NDIS workers with at least one dose	% NDIS workers fully vaccinated
NSW	120,986	120,467	97.8%	97.3%
VIC	107,032	106,261	98.0%	97.3%
QLD	66,840	66,049	96.7%	95.5%
WA	31,941	30,735	97.6%	94.0%
SA	34,443	33,560	98.2%	95.7%
TAS	10,612	10,470	99.5%	98.2%
ACT	3,474	3,465	99.5%	99.3%
NT	3,244	3,201	99.4%	98.1%
TOTAL	378,572	374,208	97.7%	96.6%

Source: the NDIS Commission has established a requirement for registered NDIS providers who provide intensive disability support services to report on the vaccination status of workers they employ, or otherwise engage, to deliver NDIS-funded supports and services, and who are required to be vaccinated in accordance with in-force state and territory public health orders. The statistics reflect data reported to the NDIS Commission by registered NDIS providers and should be considered indicative and subject to change

Note: Some registered NDIS providers are yet to report on the vaccination status of their workforce. The NDIS Commission is working with those providers around reporting requirements.

Remaining workers not included include those exempt from vaccination requirements, workers whose vaccination status is not yet verified by the provider (such as workers on leave) and provider reporting anomalies.

Data as at:
23 Feb 2022

Residential aged care vaccination rollout

Residential aged care facilities status

100%
Commonwealth facilities visited (2,541 planned sites)

172,829
People fully vaccinated

176,099
People with at least one dose

Aged care resident vaccinations



Aged care worker vaccinations

Jurisdictions	Total workers with at least one dose	Workers fully vaccinated	% Workers with at least one dose	% Workers fully vaccinated
NSW	78,780	78,760	99.3%	99.3%
VIC	69,239	69,174	98.8%	98.7%
QLD	48,832	48,829	99.0%	99.0%
SA	26,946	26,917	98.4%	98.3%
WA	23,802	23,799	99.1%	99.1%
TAS	7,653	7,653	99.8%	99.8%
NT	878	878	100.0%	100.0%
ACT	3,031	3,031	100.0%	100.0%
Total	259,161	259,041	99.0%	99.0%

Source: My Aged Care Portal vaccination progress

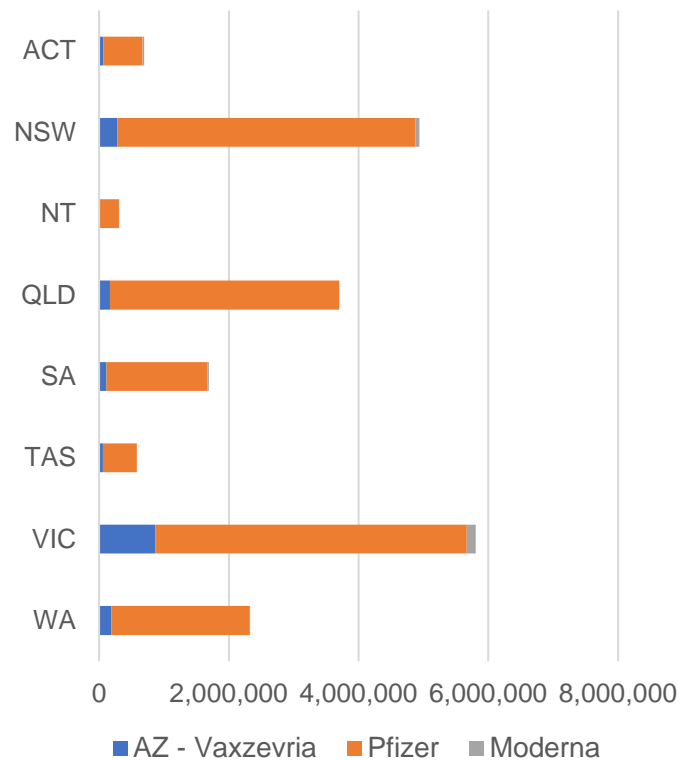
*Status updates are provided by facilities at least once per week. Reporting is updated Monday to Friday to encompass different facility updates being made on different days.

Data is sourced directly from Aged Care Service Providers and is not drawn or closely aligned with data from AIR due to inconsistencies and potential lags in uploading of records.

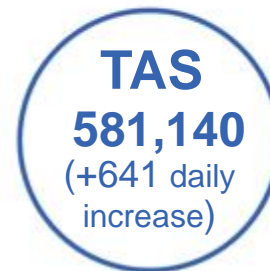
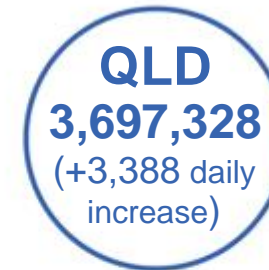
Data as at:
23 Feb 2022

Jurisdiction administered

Total vaccine doses administered in State and Territory clinics as at 23 February



20,029,656 total vaccine doses administered in State and Territory clinics as at 23 February
 + **22,134** recorded in the last 24 hours
 + **194,077** recorded in the last 7 days

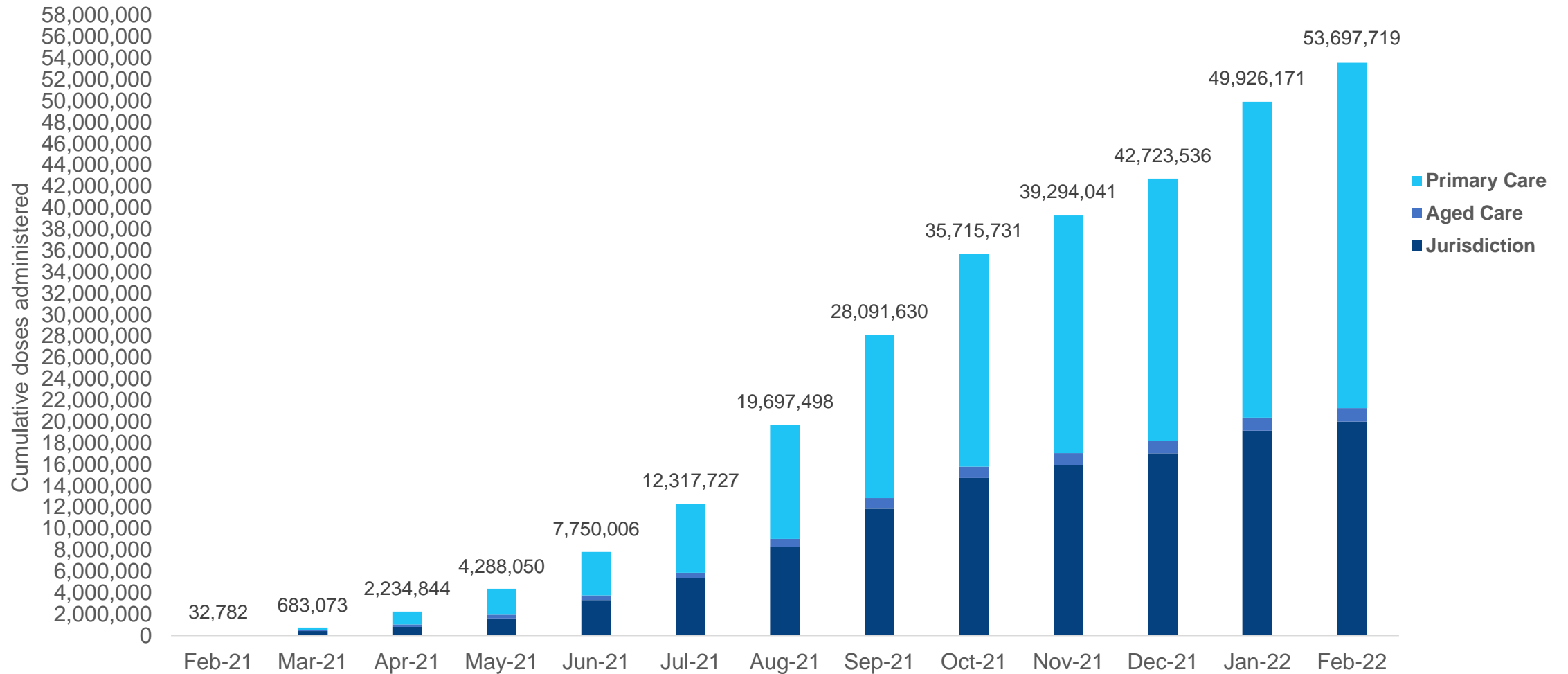


*Sourced from the Australian Immunisation Register. Numbers are calculated as difference in daily cumulative reported numbers to allow for historical corrections.
 #A historical data correction has resulted in the migration of some records from Aged Care to Primary Care reporting channel.

Source: Australian Immunisation Register

Data as at:
23 Feb 2022

Cumulative doses administered by channel



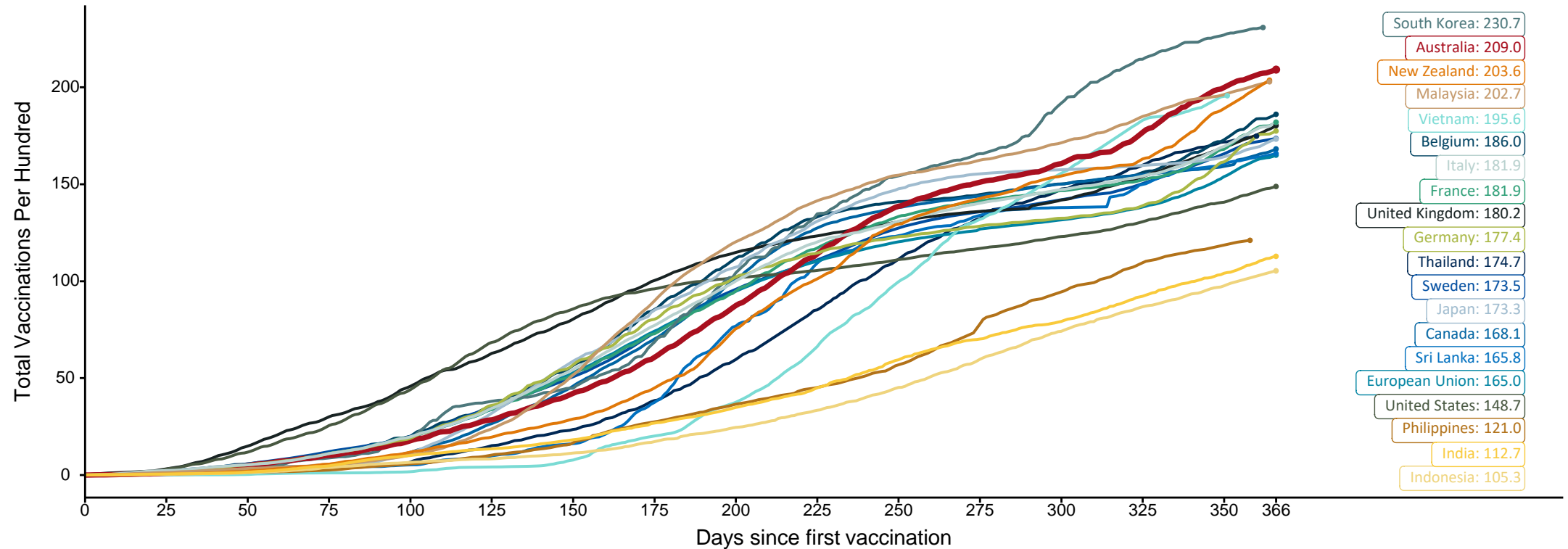
Source: Australian Immunisation Register

Doses at equivalent stages of rollout (Day 366)

Data as at:
23 Feb 2022

The x-axis is truncated at the length of Australia's vaccination program. Countries with intermittent reporting have had their doses per 100 imputed to Australia's current stage of rollout. Israel excluded as it is beyond scale of the graph

Cumulative doses administered (23 Feb): **53,697,719**

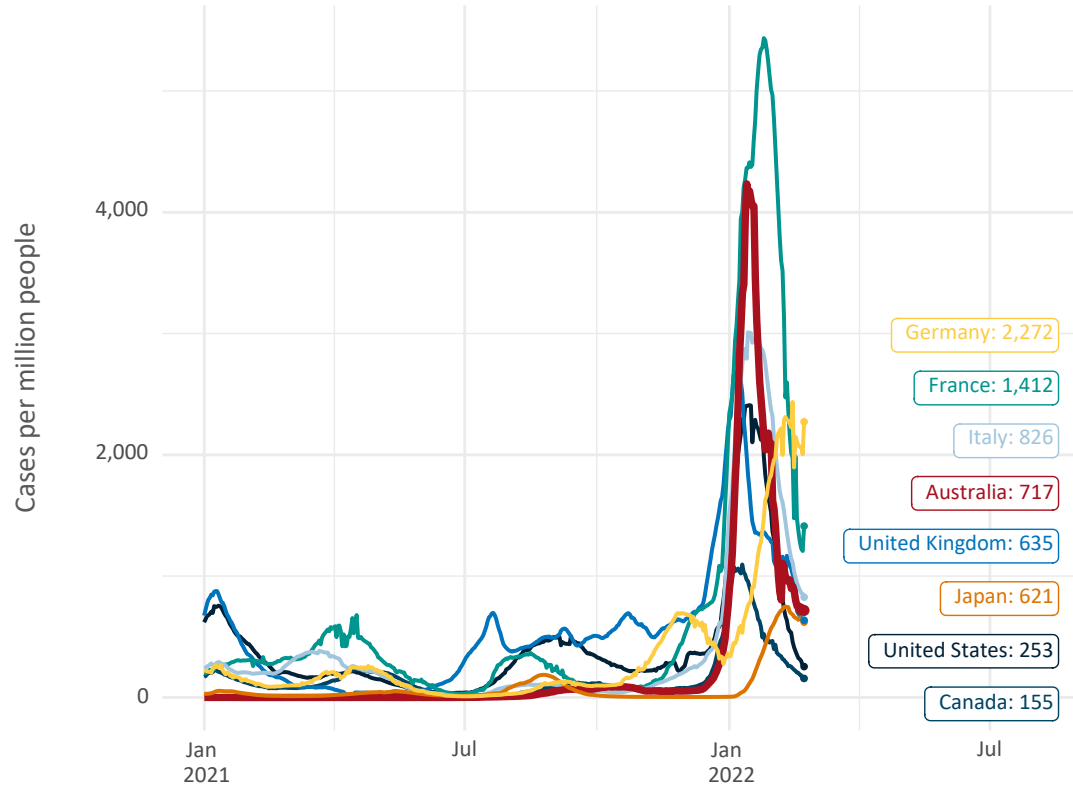


Note: From 15 September 2021, data for Australia includes all doses administered to people 12 and over. Prior to 15 September, data was for 16 and over
 Due to data revisions, Singapore has been removed from the chart
 Source: Department of Health (Australia), Our World in Data (international)
 Latest data: 23 February

Data as at:
23 Feb 2022

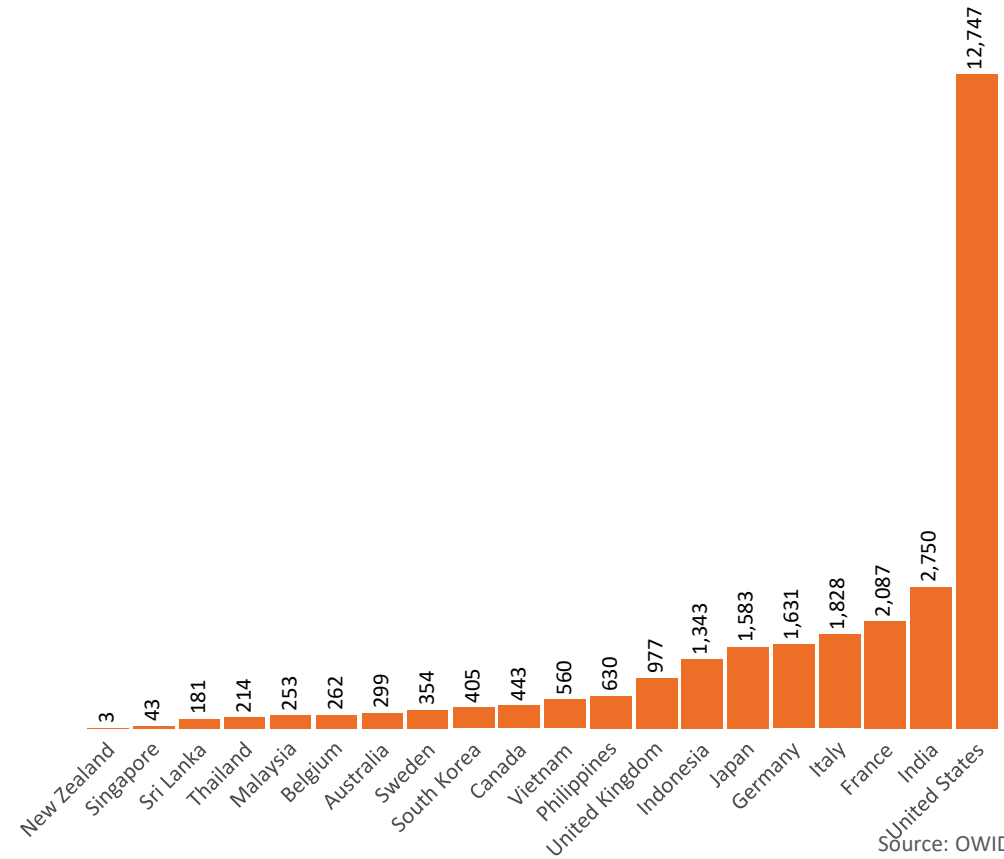
International data – COVID-19

New daily cases per million in 2021, Australia and G7 countries
Smoothed - 7 day average



Source: OWID
Data downloaded: 24 Feb 2022 07:45
Latest data: 22 Feb 2022

COVID-19 deaths in past 7 days - Australia and select countries



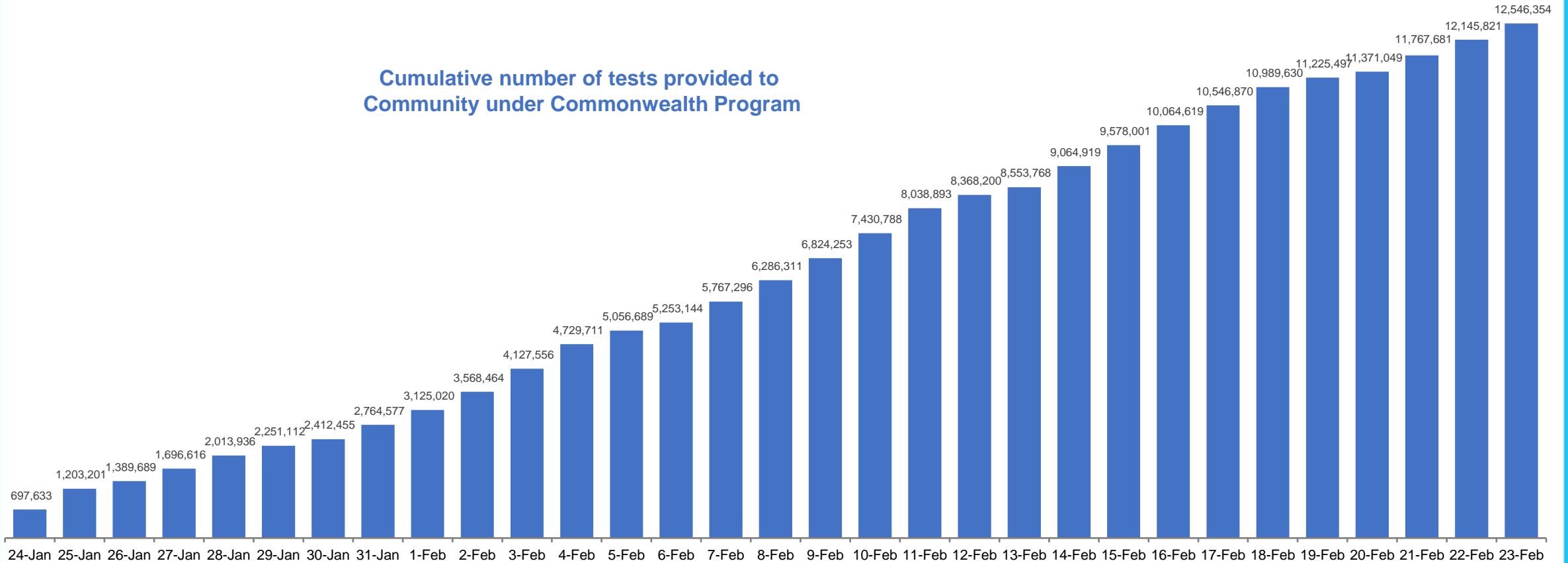
Source: OWID
Data downloaded: 24 Feb 2022 07:45
Latest data: 22 Feb 2022

Concessional rapid antigen test program

5,495 pharmacies have delivered over **12.5 million rapid antigen tests** to nearly **2.7m eligible concession card holders** under the Government's concessional rapid antigen test program.


Data as at
23 Feb 2022

Cumulative number of tests provided to
Community under Commonwealth Program



Pandemic Response Payments

Data as at midnight: 20 Feb 2022
Updated weekly



2.38 million
People have received at least one COVID Disaster Payment (including ISP200)

\$13.65 billion
Paid Out as at 20 Feb 2022


6.90 million
Claims granted across three different payments



92%
of Claims Received Digitally



COVID Disaster Payment:	5.89 million claims received - 2.19 million individuals paid a total of \$12.59 billion.
\$200 Income Support Payment:	353,000 claims received - 183,000 individuals paid a total of \$268.9 million.
Pandemic Leave Disaster Payment:	1,069,000 claims received - 719,000 individuals paid a total of \$791.1 million.



THREE PAYMENTS AVAILABLE

COVID Disaster Payment
assisting during a lockdown event in a Commonwealth hotspot.

Income Support Payment \$200
for income support recipients who lost at least 8 hours of work.

Pandemic Leave Disaster Payment
for those who have to self-isolate, quarantine or care.

For more information visit:
servicesaustralia.gov.au

COVID-19 DISASTER PAYMENTS

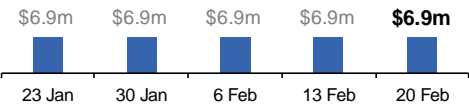
Northern Territory
Lockdown (#3) from 16 Nov to 22 Nov
Claiming period ended 27 Dec

7,500 people have received at least one COVID Disaster Payment.

\$6.9m paid out as at 20 Feb 2022.

\$0 paid in initial payments in the week ending 20 Feb 2022.

Cumulative payments made by Territory since activation on 25 Aug 2021.



Date	Cumulative Payments
23 Jan	\$6.9m
30 Jan	\$6.9m
6 Feb	\$6.9m
13 Feb	\$6.9m
20 Feb	\$6.9m

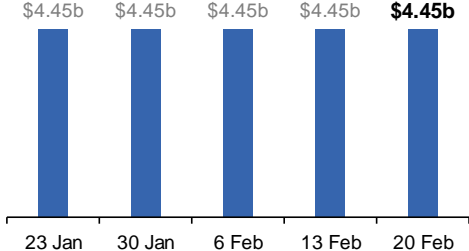
Victoria
Lockdown (#6) from 6 Aug to 28 Oct
Claiming period ended 9 Dec

745,000 people have received at least one COVID Disaster Payment.

\$4.45b paid out as at 20 Feb 2022.

\$10,000 paid in initial and reoccurring payments in the week ending 20 Feb 2022.

Cumulative payments made by State since activation on 8 Jun 2021.



Date	Cumulative Payments
23 Jan	\$4.45b
30 Jan	\$4.45b
6 Feb	\$4.45b
13 Feb	\$4.45b
20 Feb	\$4.45b

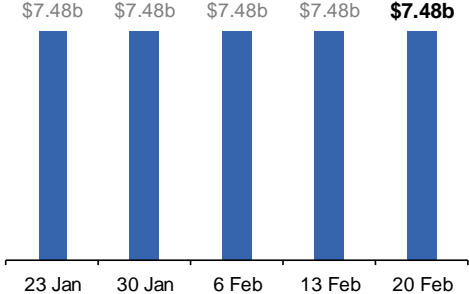
New South Wales
Lockdown from 24 Jun to 10 Oct
Claiming period ended 27 Nov

1.08m people have received at least one COVID Disaster Payment.

\$7.48b paid out as at 20 Feb 2022.

\$11,000 paid in initial and reoccurring payments in the week ending 20 Feb 2022.

Cumulative payments made by State since activation on 1 Jul 2021.



Date	Cumulative Payments
23 Jan	\$7.48b
30 Jan	\$7.48b
6 Feb	\$7.48b
13 Feb	\$7.48b
20 Feb	\$7.48b

Australian Capital Territory
Lockdown from 12 Aug to 14 Oct
Claiming period ended 25 Nov

65,000 people have received at least one COVID Disaster Payment.

\$344.7m paid out as at 20 Feb 2022.

\$1,000 paid in initial and reoccurring payments in the week ending 20 Feb 2022.

Cumulative payments made by Territory since activation on 20 Aug 2021.



Date	Cumulative Payments
23 Jan	\$344.7m
30 Jan	\$344.7m
6 Feb	\$344.7m
13 Feb	\$344.7m
20 Feb	\$344.7m

Pandemic Response Payments (continued)

Data as at midnight: 20 Feb 2022
Updated weekly

COVID-19 DISASTER PAYMENTS

Tasmania

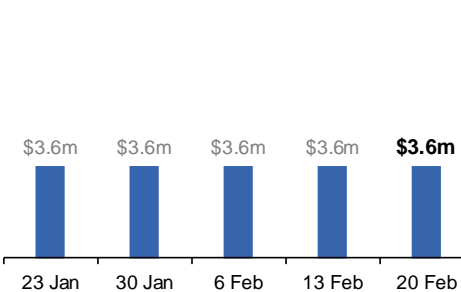
Lockdown from 15 Oct to 18 Oct
Claiming period ended 12 Nov

6,900 people have received at least one COVID Disaster Payment.

\$3.6m paid out as at 20 Feb 2022.

\$0 paid in initial and reoccurring payments in the week ending 20 Feb 2022.

Cumulative payments made by State since activation on 22 Oct 2021.



Queensland

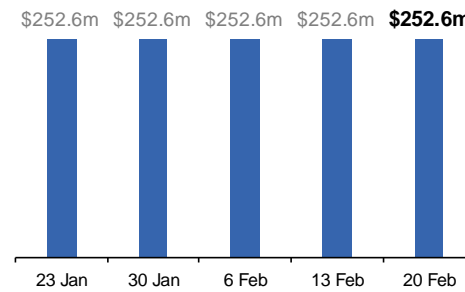
Lockdown from 31 Jul to 11 Aug
Claiming period ended 28 Aug

196,000 people have received at least one COVID Disaster Payment.

\$252.6m paid out as at 20 Feb 2022.

\$0 paid in initial and reoccurring payments in the week ending 20 Feb 2022.

Cumulative payments made by State since activation on 7 Aug 2021.



South Australia

Lockdown from 21 to 27 Jul
Claiming period ended 17 Aug

86,000 people have received at least one COVID Disaster Payment.

\$48.2m paid out as at 20 Feb 2022.

\$0 paid in initial and reoccurring payments in the week ending 20 Feb 2022.

Cumulative payments made by State since activation on 28 Jul 2021.

