



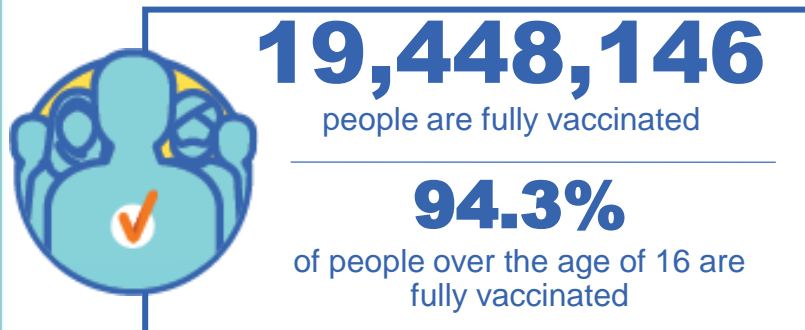
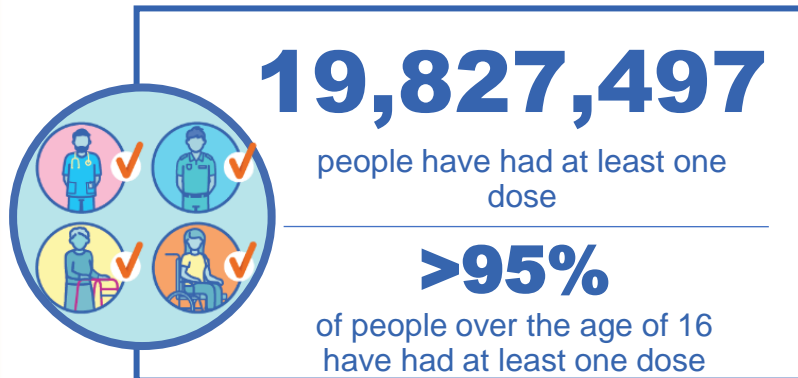
**Australian Government**  
**Operation COVID Shield**

# COVID-19 Vaccine Roll-out

23 February 2022

Data as at:  
22 Feb 2022

## Total vaccine doses



**53,572,684** total vaccine  
doses administered nationally as at 22 February

**+133,500** recorded in the last 24 hours

**NSW**  
**16,779,010**  
(+33,723 daily  
increase)

**VIC**  
**14,171,827**  
(+34,161 daily  
increase)

**QLD**  
**10,213,833**  
(+23,349 daily  
increase)

**WA**  
**5,672,159**  
(+24,299 daily  
increase)

**TAS**  
**1,187,783**  
(+2,929 daily  
increase)

**SA**  
**3,674,724**  
(+9,255 daily  
increase)

**ACT**  
**1,355,753**  
(+4,667 daily  
increase)

**NT**  
**517,595**  
(+1,117 daily  
increase)

\*Administration state breakdown indicates state in which a vaccine was administered

\*\*Overall dose count includes instances of more than two doses per person in a small number of cases.

Source: Australian Immunisation Register

# Booster Vaccinations

Australia's COVID-19  
Vaccine Roadmap

Data as at:  
22 Feb 2022



**11,051,331** total people over the age of 16 years old  
who have received more than two doses nationally

**+111,244** people who have received more than two doses  
nationally in the last 24 hours

**NSW**  
**3,456,145**  
(30,249 daily  
increase)

**VIC**  
**3,014,793**  
(30,473 daily  
increase)

**QLD**  
**1,936,995**  
(18,872 daily  
increase)

**WA**  
**1,224,727**  
(18,277 daily  
increase)

**TAS**  
**241,987**  
(2,468 daily  
increase)

**SA**  
**780,657**  
(7,252 daily  
increase)

**ACT**  
**231,452**  
(1,878 daily  
increase)

**NT**  
**87,802**  
(811 daily  
increase)

**76,773**

doses administered to persons  
residing in other territories or with  
missing residential information

Source: Australian Immunisation Register

# Vaccinations by residential location

Australia's COVID-19 Vaccine Roadmap

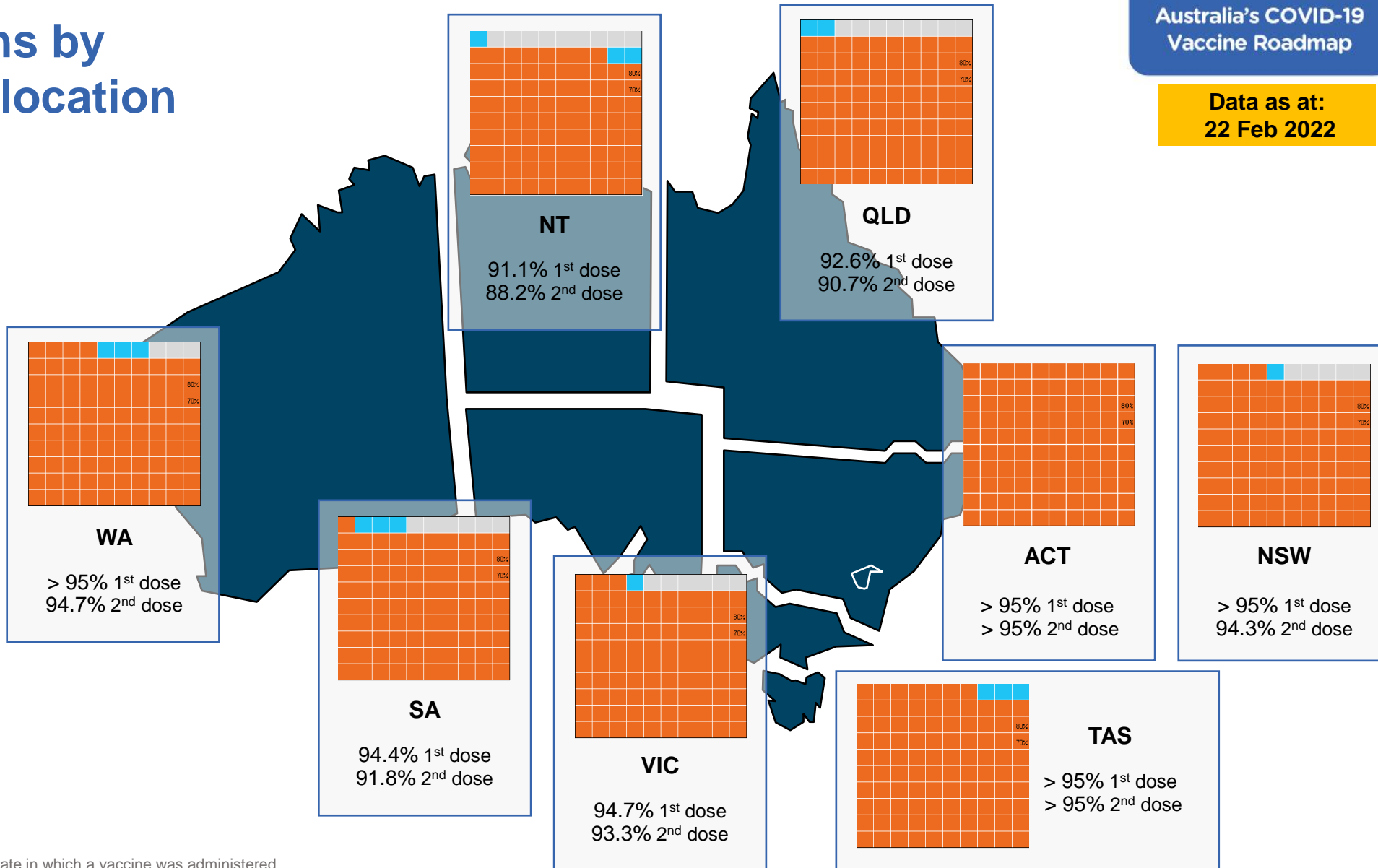
Data as at:  
22 Feb 2022

## First doses

Age	Today	4 weeks ago	8 weeks ago
16+	>95%	>95%	94.6%
50+	>95%	>95%	>95%
70+	>95%	>95%	>95%

## Fully vaccinated

Age	Today	4 weeks ago	8 weeks ago
16+	94.3%	93.3%	91.6%
50+	>95%	>95%	>95%
70+	>95%	>95%	>95%



\*Residential state may differ from the state in which a vaccine was administered

# Commonwealth and Jurisdiction vaccine doses administered

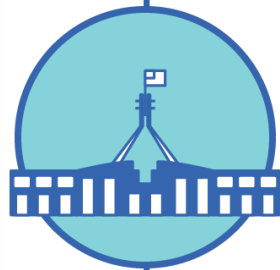
Data as at:  
22 Feb 2022



**53,572,684** total vaccine  
doses administered nationally as at 22 February  
**+ 133,500** recorded in the last 24 hours



**20,007,522**  
doses administered by state  
and territory facilities  
**+ 26,313**  
recorded in the last 24 hours



**33,565,162**  
doses administered by  
commonwealth facilities  
**+ 107,187**  
recorded in the last 24 hours

**32,312,422** total vaccine doses  
administered in primary care settings  
**1,252,740** total vaccine doses  
administered in aged care and disability  
settings

NSW	Jurisdictions	Commonwealth
Cumulative	4,938,768	11,840,242
Daily increase	3,106	30,617

VIC	Jurisdictions	Commonwealth
Cumulative	5,800,022	8,371,805
Daily increase	7,055	27,106

QLD	Jurisdictions	Commonwealth
Cumulative	3,693,940	6,519,893
Daily increase	3,938	19,411

WA	Jurisdictions	Commonwealth
Cumulative	2,314,616	3,357,543
Daily increase	5,954	18,345

TAS	Jurisdictions	Commonwealth
Cumulative	580,499	607,284
Daily increase	59	2,870

SA	Jurisdictions	Commonwealth
Cumulative	1,686,588	1,988,136
Daily increase	2,589	6,666

ACT	Jurisdictions	Commonwealth
Cumulative	689,914	665,839
Daily increase	2,996	1,671

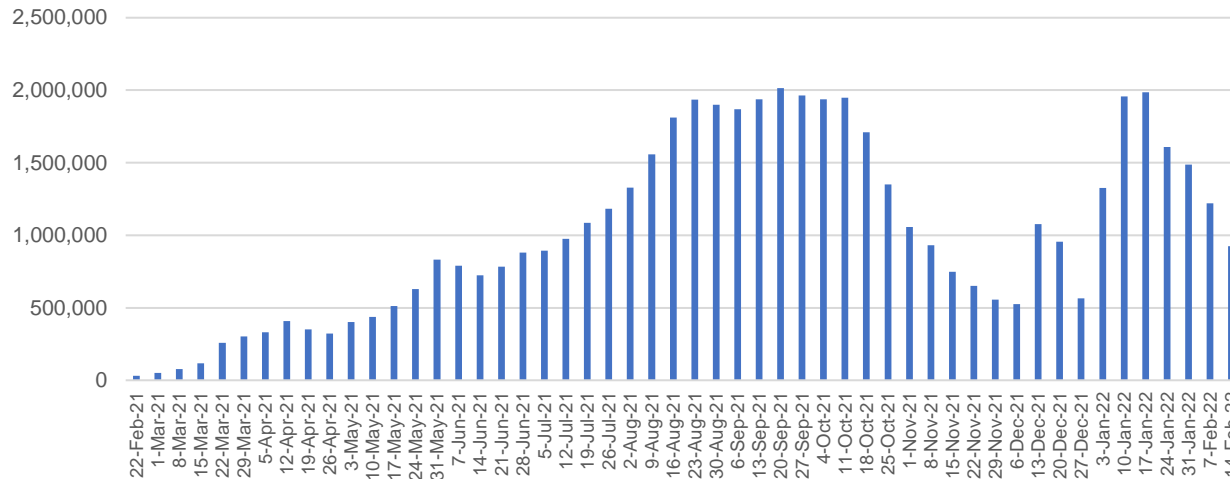
NT	Jurisdictions	Commonwealth
Cumulative	303,175	214,420
Daily increase	616	501

# Vaccine milestone charts

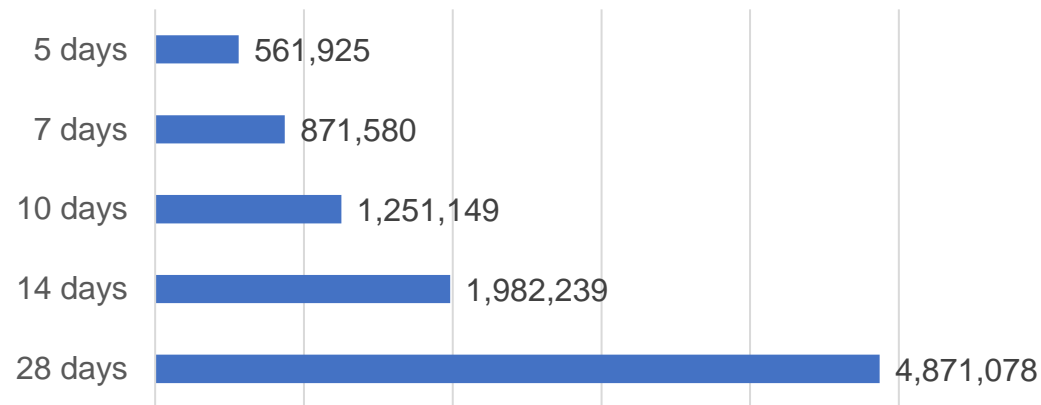
Data as at:  
22 Feb 2022

Australia's COVID-19  
Vaccine Roadmap

Doses Administered by Week

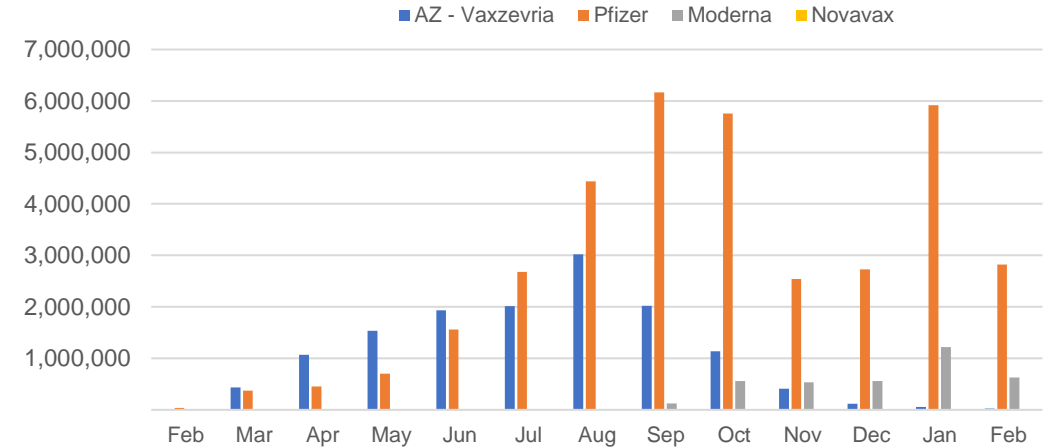


Doses Reported

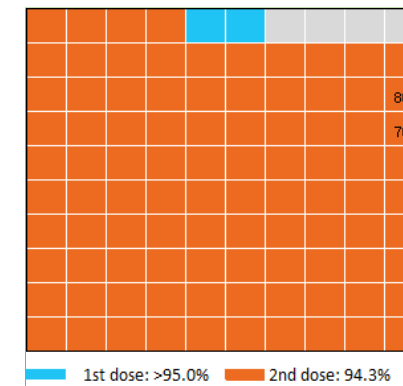


\*Sourced from the Australian Immunisation Register.

Doses by administration month and vaccine type



Eligible population percentage coverage



\*Each square represents 1% of the national population.  
Squares are filled as milestones are achieved.

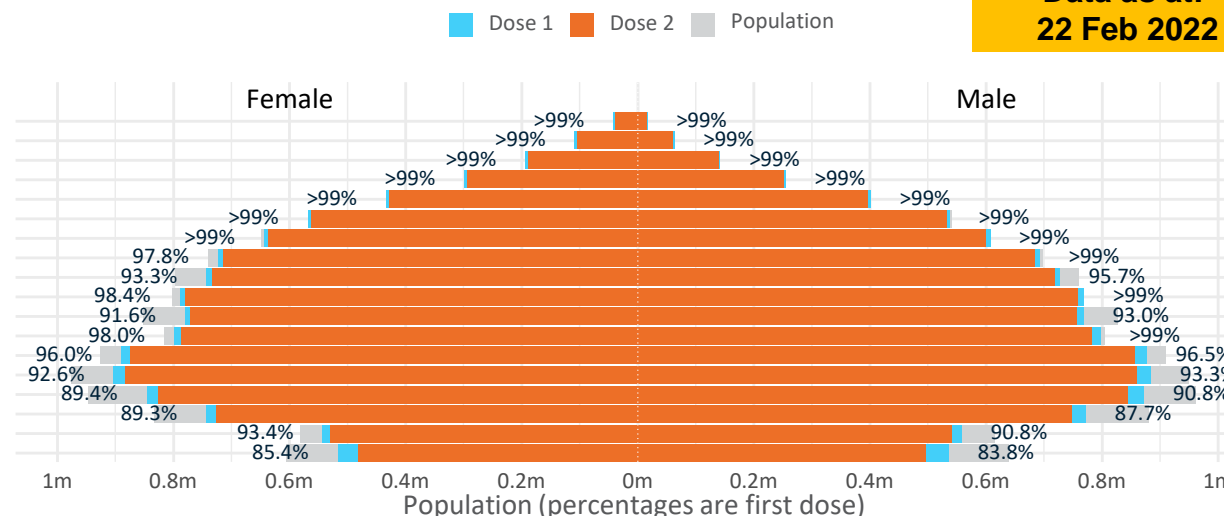
# Doses by age and sex

First and second doses by age and sex

Australia's COVID-19  
Vaccine Roadmap

Data as at:  
22 Feb 2022

Age	Dose 1	Dose 2
95+	58,150 (>99%)	54,633 (>99%)
90-94	171,494 (>99%)	165,265 (>99%)
85-89	335,886 (>99%)	327,849 (>99%)
80-84	553,708 (>99%)	545,065 (>99%)
75-79	835,389 (>99%)	825,705 (>99%)
70-74	1,106,873 (>99%)	1,094,468 (>99%)
65-69	1,252,199 (>99%)	1,236,670 (98.3%)
60-64	1,417,219 (98.6%)	1,399,254 (97.4%)
55-59	1,471,073 (94.6%)	1,452,470 (93.4%)
50-54	1,559,391 (>99%)	1,539,223 (98.4%)
45-49	1,549,344 (92.4%)	1,526,958 (91.1%)
40-44	1,598,153 (98.6%)	1,569,807 (96.9%)
35-39	1,771,148 (96.5%)	1,734,041 (94.5%)
30-34	1,795,428 (93.3%)	1,748,839 (90.9%)
25-29	1,728,867 (90.7%)	1,677,786 (88.0%)
20-24	1,521,335 (88.8%)	1,478,236 (86.3%)
16-19	1,101,840 (92.1%)	1,071,877 (89.6%)
12-15	1,052,639 (84.6%)	978,538 (78.7%)

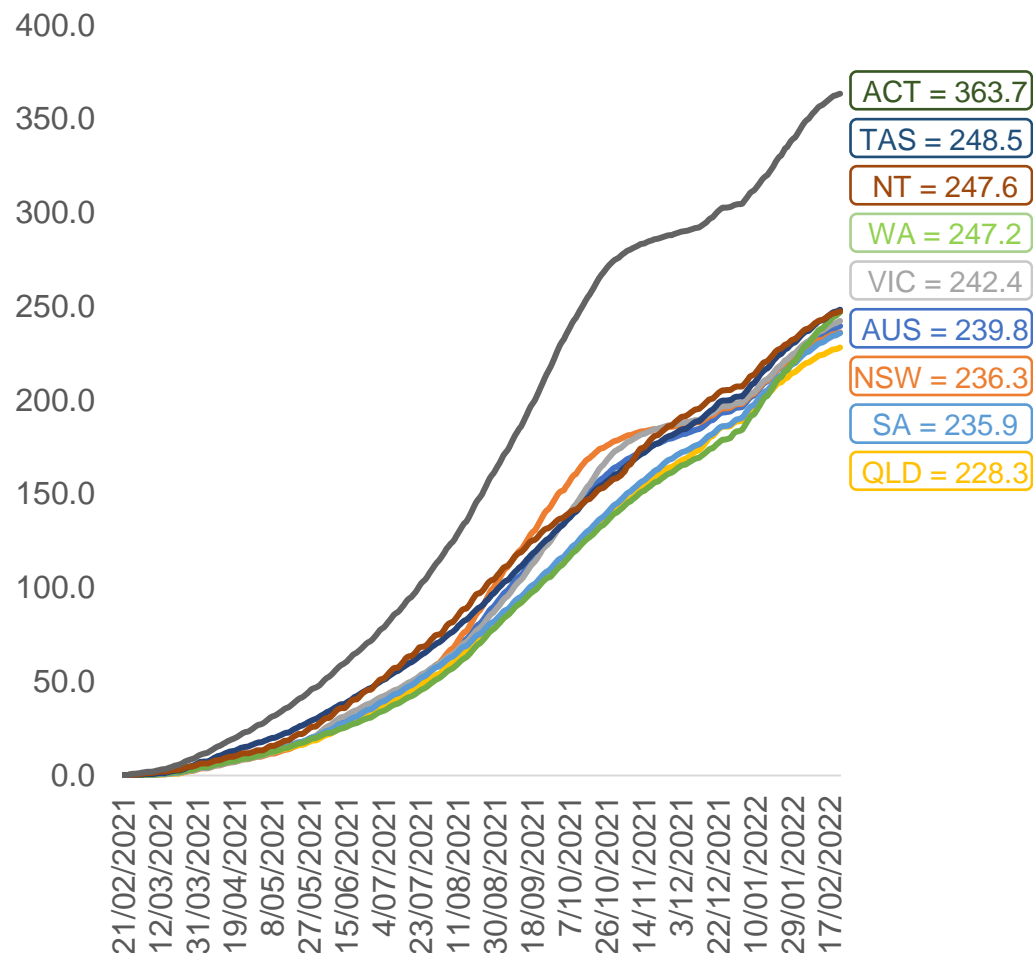


	AUS	ACT	NSW	NT	QLD	SA	TAS	VIC	WA
16 and over - dose 1	19,827,497	350,379	6,285,425	173,575	3,810,065	1,359,437	440,602	5,121,046	2,058,945
16 and over - dose 2	19,448,146	345,151	6,191,562	168,067	3,730,625	1,322,953	429,671	5,047,068	2,002,676
16 and over - population	20,619,959*	344,037	6,565,651	190,571	4,112,707	1,440,400	440,172	5,407,574	2,114,978
16 and over % with dose 1	96.16%	>99%	95.73%	91.08%	92.64%	94.38%	>99%	94.70%	97.35%
16 and over % with dose 2	94.32%	>99%	94.30%	88.19%	90.71%	91.85%	97.61%	93.33%	94.69%
5 to 11 - dose 1	1,124,018	30,772	336,548	12,418	202,406	80,704	27,659	311,122	115,487
5 to 11 - dose 2	15,292	223	6,411	99	2,521	376	4,873	617	617
5 to 11 - population	2,276,638	39,789	716,460	24,750	478,731	148,816	45,033	578,499	244,154
5 to 11 % with dose 1	49.37%	77.34%	46.97%	50.17%	42.28%	54.23%	61.42%	53.78%	47.30%
5 to 11 % with dose 2	0.67%	0.56%	0.89%	0.40%	0.53%	0.25%	0.16%	0.84%	0.25%
12 to 15 - dose 1	1,052,639	20,082	326,281	10,892	207,715	68,125	22,841	276,054	111,349
12 to 15 - dose 2	978,538	19,181	308,499	9,603	190,538	62,930	21,118	261,410	97,308
12 to 15 - population	1,243,990	19,693	390,330	13,060	270,146	82,747	26,308	308,611	132,869
12 to 15 % with dose 1	84.62%	>99%	83.59%	83.40%	76.89%	82.33%	86.82%	89.45%	83.80%
12 to 15 % with dose 2	78.66%	97.40%	79.04%	73.53%	70.53%	76.05%	80.27%	84.71%	73.24%

\*National population will not equal sum of listed jurisdictions due to a small number of people counted in national population residing in some 'other' territories. Sum of state doses will not add to national total as some records are unable to be geocoded to a State or Territory.  
Doses sourced from Australian Immunisation Register, population from ABS ERP June 2020

# Vaccinations by location

Cumulative total doses administered vs eligible state populations\*

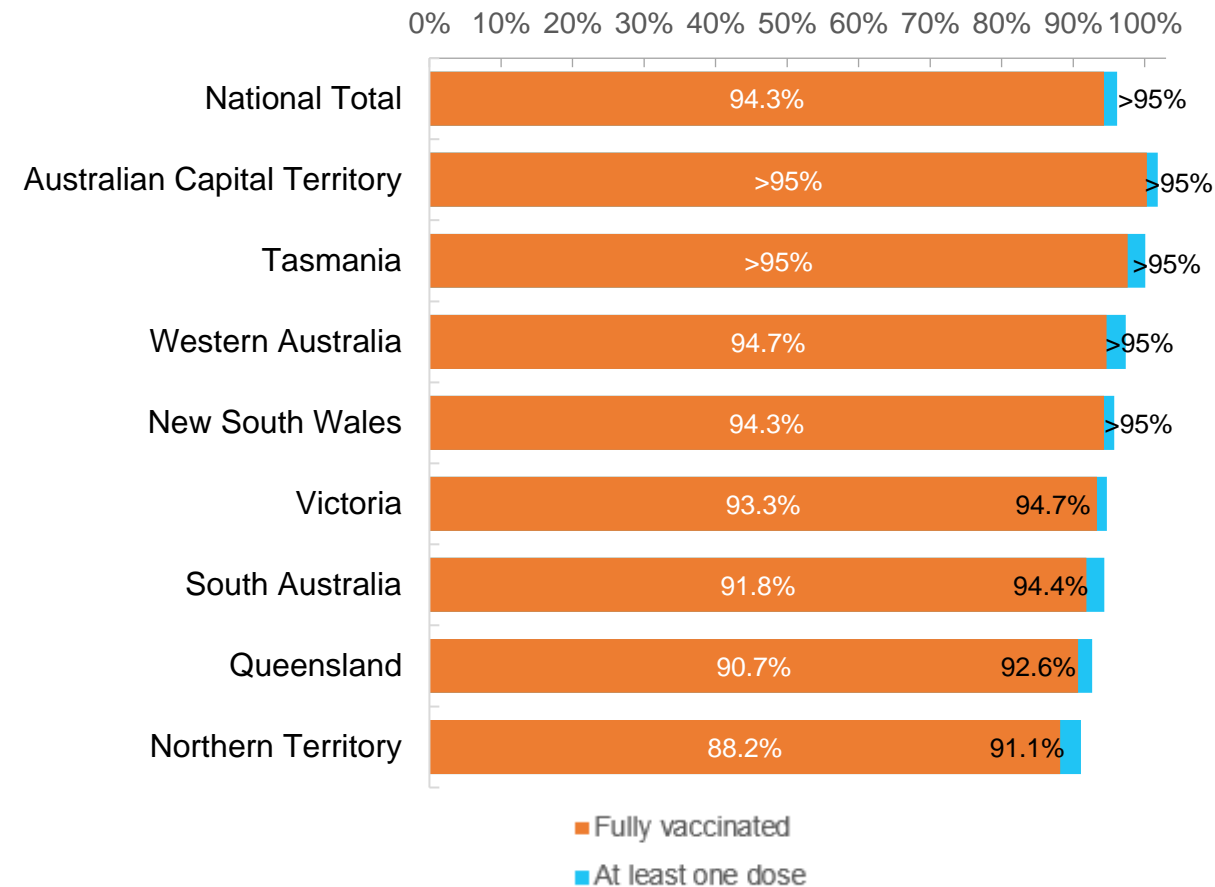


\*Not an indication of percentage vaccinated, numbers will exceed 100 due to multiple doses required per person of the population. All doses are included for those aged 12 and above, and are based on vaccination provider location.

Data as at:  
22 Feb 2022

Australia's COVID-19  
Vaccine Roadmap

First and Second Doses by residential location





# Aboriginal and Torres Strait Islander peoples

## Number of people vaccinated

Data as at:  
22 Feb 2022  
Updated weekly

Australia's COVID-19  
Vaccine Roadmap



**431,220**

people over the age of 16  
have had at least one dose

**83.1%**

of people over the age of 16  
have had at least one dose



**405,102**

people over the age of 16  
are fully vaccinated

**78.0%**

of people over the age of 16 are  
fully vaccinated



**47,614  
(67.1%)**

people aged 12-15 years  
have had at least one dose

### 176 Aboriginal community controlled health services (ACCHS)

0#	50	27	44	12	3	21	19
<b>ACT</b>	<b>NSW</b>	<b>NT</b>	<b>QLD</b>	<b>SA</b>	<b>TAS</b>	<b>VIC</b>	<b>WA</b>

Medicare Address State <sup>##</sup>	Individuals Dose 1	Individuals Dose 1 %	Individuals Dose 2	Individuals Dose 2 %
Australian Capital Territory	4,864	91.3%	4,727	88.7%
New South Wales	134,769	86.5%	131,329	84.3%
Northern Territory	41,851	88.5%	38,873	82.2%
Queensland	113,793	80.3%	106,457	75.1%
South Australia	19,552	78.4%	17,774	71.3%
Tasmania	14,101	88.0%	13,534	84.4%
Victoria	35,162	89.3%	34,237	86.9%
Western Australia	50,742	80.7%	43,986	70.0%
Unknown/Other Territories	16,386	63.4%	14,185	54.9%
<b>Totals</b>	<b>431,220</b>	<b>83.1%</b>	<b>405,102</b>	<b>78.0%</b>

Source: Australian Immunisation Register

\*Identifying as Aboriginal and Torres Strait Islander is optional and the estimated population may be under reported.

\*\*Includes all Aboriginal and Torres Strait Islander peoples who have received a vaccination, not limited to those administered in an ACCHS setting

#ACCHS in the ACT are currently operating as a Commonwealth Vaccine Clinics so not included to avoid double counting

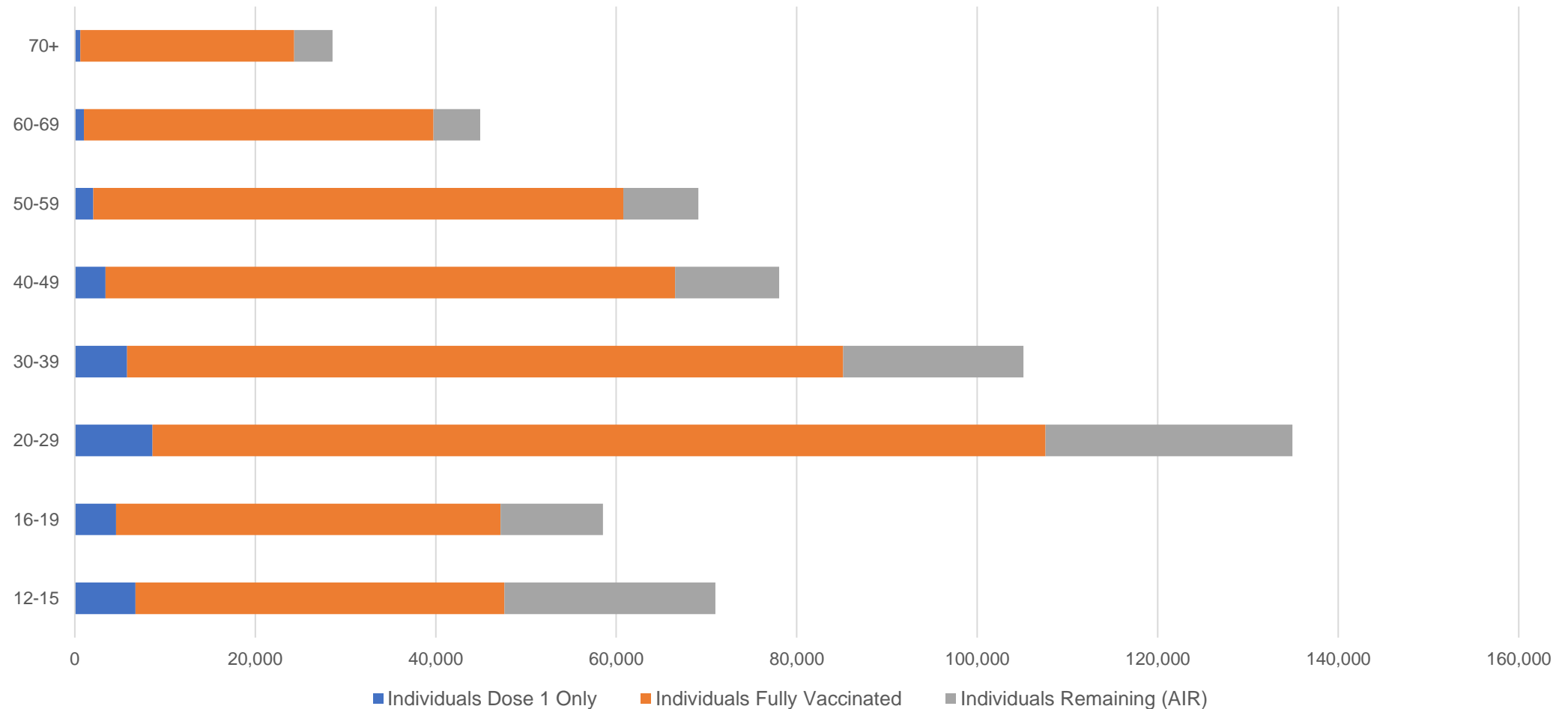
##The above table includes all identified Aboriginal and Torres Strait Islander people who are aged 16 and above by their state of residence.

# Aboriginal and Torres Strait Islander peoples

## Number of people vaccinated by age

Data as at:  
22 Feb 2022  
Updated weekly

Australia's COVID-19  
Vaccine Roadmap



Source: Australian Immunisation Register

# Commonwealth primary care

Data as at:  
22 Feb 2022

Australia's COVID-19  
Vaccine Roadmap



## Primary care vaccine administration sites

<b>5,769</b>	<b>128</b>	<b>176</b>	<b>3,545</b>
GPs	CVCs	ACCHS	Pharmacies



**32,312,422** total vaccine doses administered  
primary care settings as at 22 February  
**+ 106,029** recorded in the last 24 hours

## Primary care vaccinations by provider type

	Doses administered	Daily increase	7 day increase
General Practice* includes other Commonwealth	26,481,224	67,418	428,416
Pharmacy	5,831,198	38,611	234,027

**NSW**  
**11,304,557**  
(+30,314 daily increase)

**VIC**  
**8,068,682**  
(+26,578 daily increase)

**QLD**  
**6,246,618**  
(+19,492 daily increase)

**WA**  
**3,236,829**  
(+18,025 daily increase)

**TAS**  
**588,913**  
(+2,858 daily increase)

**SA**  
**1,912,262**  
(+6,567 daily increase)

**ACT**  
**512,779**  
(+1,393 daily increase)

**NT**  
**193,892**  
(+478 daily increase)

**247,890**

doses administered to persons  
residing in other territories or with  
missing residential information

\*General practice includes Commonwealth Vaccination Clinics, Aboriginal Community Health Centres, Royal Flying Doctor Service and other Commonwealth vaccination facilities

Source: Australian Immunisation Register

Data as at:  
22 Feb 2022

# Commonwealth aged care and disability doses administered



**1,252,740** (+ 1,158 last 24 hours)

Total vaccine doses administered in aged care and disability facilities as at 22 February

Number of doses administered as part of the Commonwealth aged and disability care rollout

**NSW**  
**555,745**  
(+385 daily increase)

**VIC**  
**238,877**  
(+178 daily increase)

**QLD**  
**197,582**  
(+188 daily increase)

**WA**  
**99,671**  
(+259 daily increase)

**TAS**  
**22,199**  
(+25 daily increase)

**SA**  
**83,553**  
(+61 daily increase)

**ACT**  
**16,341**  
(+47 daily increase)

**NT**  
**7,251**  
(+11 daily increase)

**31,521**

doses administered to persons  
residing in other territories or with  
missing residential information

\*Sourced from the Australian Immunisation Register. Includes all persons vaccinated at participating residential aged care, disability and related industry settings.

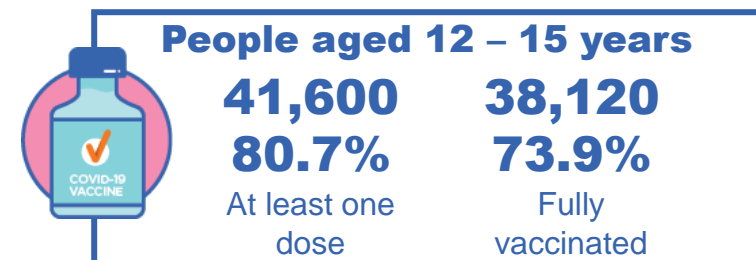
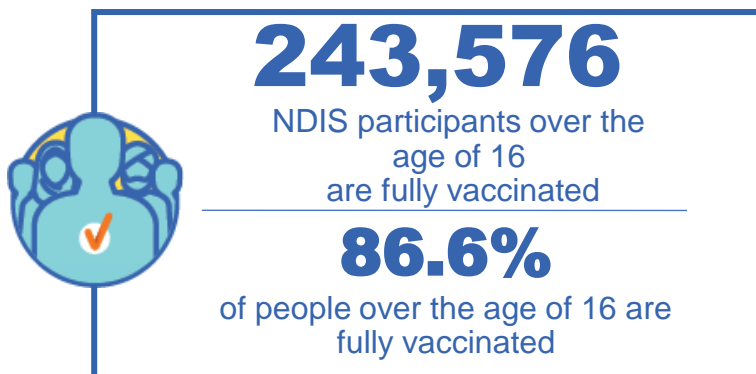
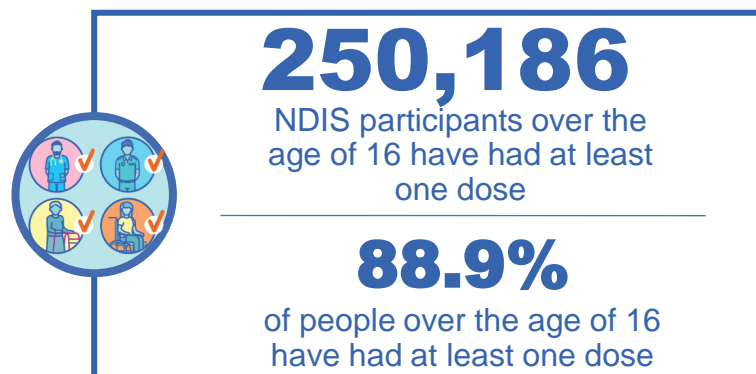
\*\*State level breakdown indicates the residential location and may not align to the state in which the vaccination occurred.

Source: Australian Immunisation Register

# National Disability Insurance Scheme (NDIS) reported vaccinations

Data as at:  
17 February 2022  
Updated weekly

Australia's COVID-19  
Vaccine Roadmap



## NDIS participant vaccinations

	People aged 16+ with at least one dose	People aged 16+ fully vaccinated	% People aged 16+ with at least one dose	% People aged 16+ fully vaccinated
ACT	4,785	4,714	91.0%	89.7%
NSW	77,542	76,177	89.4%	87.8%
NT	2,171	2,062	80.3%	76.2%
QLD	48,996	47,592	88.1%	85.6%
SA	20,307	19,544	86.6%	83.3%
TAS	6,252	6,023	88.8%	85.6%
VIC	66,808	65,484	90.1%	88.3%
WA	23,325	21,980	88.8%	83.6%
National	250,186	243,576	88.9%	86.6%

Source: Linkage between National Disability Insurance Agency data and the Australian Immunisation Register. Total NDIS participant numbers as at 17th October. Australian Immunisation Register data as at 16 February. Includes all participants regardless of residence type.

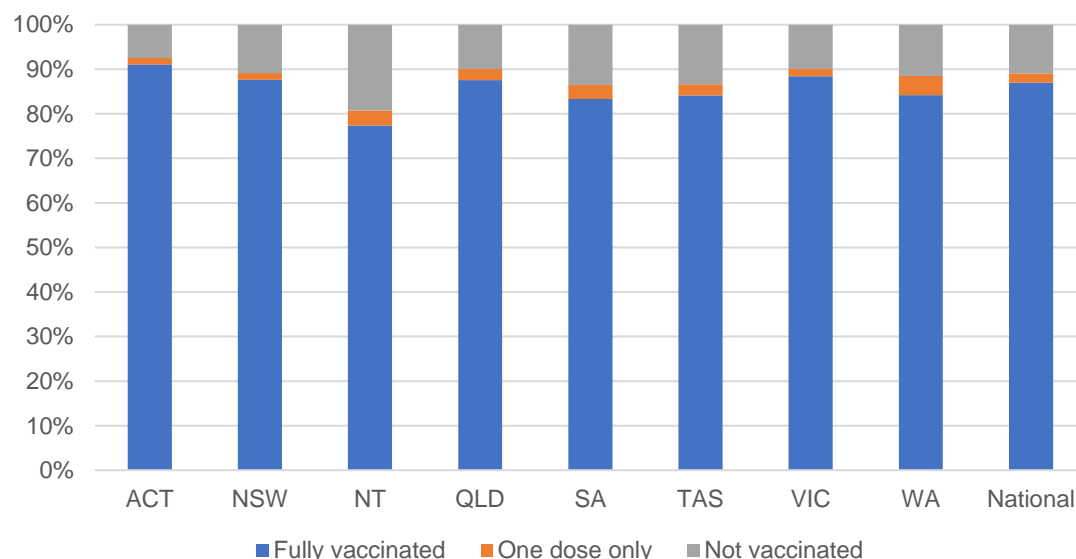
# National Disability Insurance Scheme (NDIS) reported vaccinations

Data as at:  
17 February 2022  
Updated Weekly

Australia's COVID-19  
Vaccine Roadmap

NATIONAL	Total people with at least one dose	People fully vaccinated	Total number of individuals in cohort	% People with at least one dose	% People fully vaccinated
NDIS participants living in disability accommodation	20,386	19,920	22,800	89.4%	87.4%

## NDIS participants in disability and aged care accommodation



Source: Linkage between National Disability Insurance Agency data and the Australian Immunisation Register. Includes participants residing in disability accommodation only.

Source: Total NDIS participant numbers as at 17th October. Participant data as at 15 February. Australian Immunisation Register data as at 16 February. Worker data as at 17 February.

## NDIS workforce vaccinations

	NDIS workers with at least one dose	NDIS workers fully vaccinated	% NDIS workers with at least one dose	% NDIS workers fully vaccinated
NSW	120,986	120,467	97.8%	97.3%
VIC	107,032	106,261	98.0%	97.3%
QLD	66,840	66,049	96.7%	95.5%
WA	31,941	30,735	97.6%	94.0%
SA	34,443	33,560	98.2%	95.7%
TAS	10,612	10,470	99.5%	98.2%
ACT	3,474	3,465	99.5%	99.3%
NT	3,244	3,201	99.4%	98.1%
<b>TOTAL</b>	<b>378,572</b>	<b>374,208</b>	<b>97.7%</b>	<b>96.6%</b>

Source: the NDIS Commission has established a requirement for registered NDIS providers who provide intensive disability support services to report on the vaccination status of workers they employ, or otherwise engage, to deliver NDIS-funded supports and services, and who are required to be vaccinated in accordance with in-force state and territory public health orders. The statistics reflect data reported to the NDIS Commission by registered NDIS providers and should be considered indicative and subject to change

Note: Some registered NDIS providers are yet to report on the vaccination status of their workforce. The NDIS Commission is working with those providers around reporting requirements.

Remaining workers not included include those exempt from vaccination requirements, workers whose vaccination status is not yet verified by the provider (such as workers on leave) and provider reporting anomalies.

# Residential aged care vaccination rollout

Data as at:  
22 Feb 2022

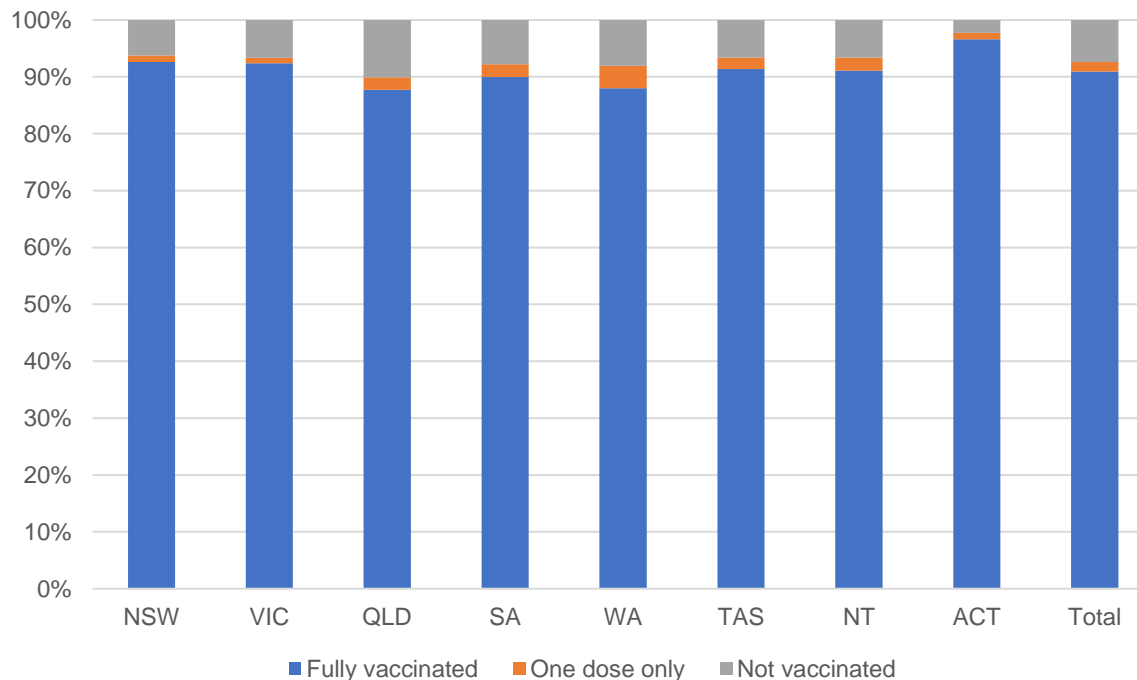
Residential aged care facilities status

**100%**  
Commonwealth facilities visited (2,541 planned sites)

**173,147**  
People fully vaccinated

**176,330**  
People with at least one dose

## Aged care resident vaccinations



## Aged care worker vaccinations

Jurisdictions	Total workers with at least one dose	Workers fully vaccinated	% Workers with at least one dose	% Workers fully vaccinated
NSW	78,854	78,833	99.4%	99.4%
VIC	69,599	69,534	99.2%	99.1%
QLD	48,815	48,812	98.9%	98.9%
SA	26,882	26,852	98.4%	98.2%
WA	23,716	23,713	98.8%	98.8%
TAS	7,655	7,655	99.8%	99.8%
NT	877	877	100.0%	100.0%
ACT	3,024	3,024	100.0%	100.0%
Total	259,422	259,300	99.1%	99.1%

Source: My Aged Care Portal vaccination progress

\*Status updates are provided by facilities at least once per week. Reporting is updated Monday to Friday to encompass different facility updates being made on different days.

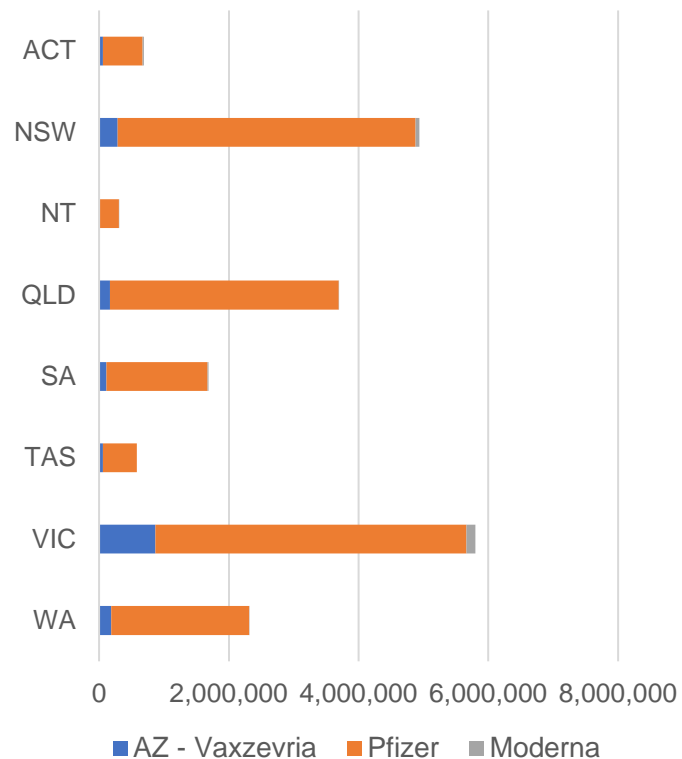
Data is sourced directly from Aged Care Service Providers and is not drawn or closely aligned with data from AIR due to inconsistencies and potential lags in uploading of records.



Data as at:  
22 Feb 2022

## Jurisdiction administered

Total vaccine doses administered in State and Territory clinics as at 22 February 2022



**20,007,522** total vaccine doses administered  
in State and Territory clinics as at 22 February  
+ **26,313** recorded in the last 24 hours  
+ **202,712** recorded in the last 7 days

**NSW**  
**4,938,768**  
(+3,106 daily  
increase)

**VIC**  
**5,800,022**  
(+7,055 daily  
increase)

**QLD**  
**3,693,940**  
(+3,938 daily  
increase)

**WA**  
**2,314,616**  
(+5,954 daily  
increase)

**TAS**  
**580,499**  
(+59 daily  
increase)

**SA**  
**1,686,588**  
(+2,589 daily  
increase)

**ACT**  
**689,914**  
(+2,996 daily  
increase)

**NT**  
**303,175**  
(+616 daily  
increase)

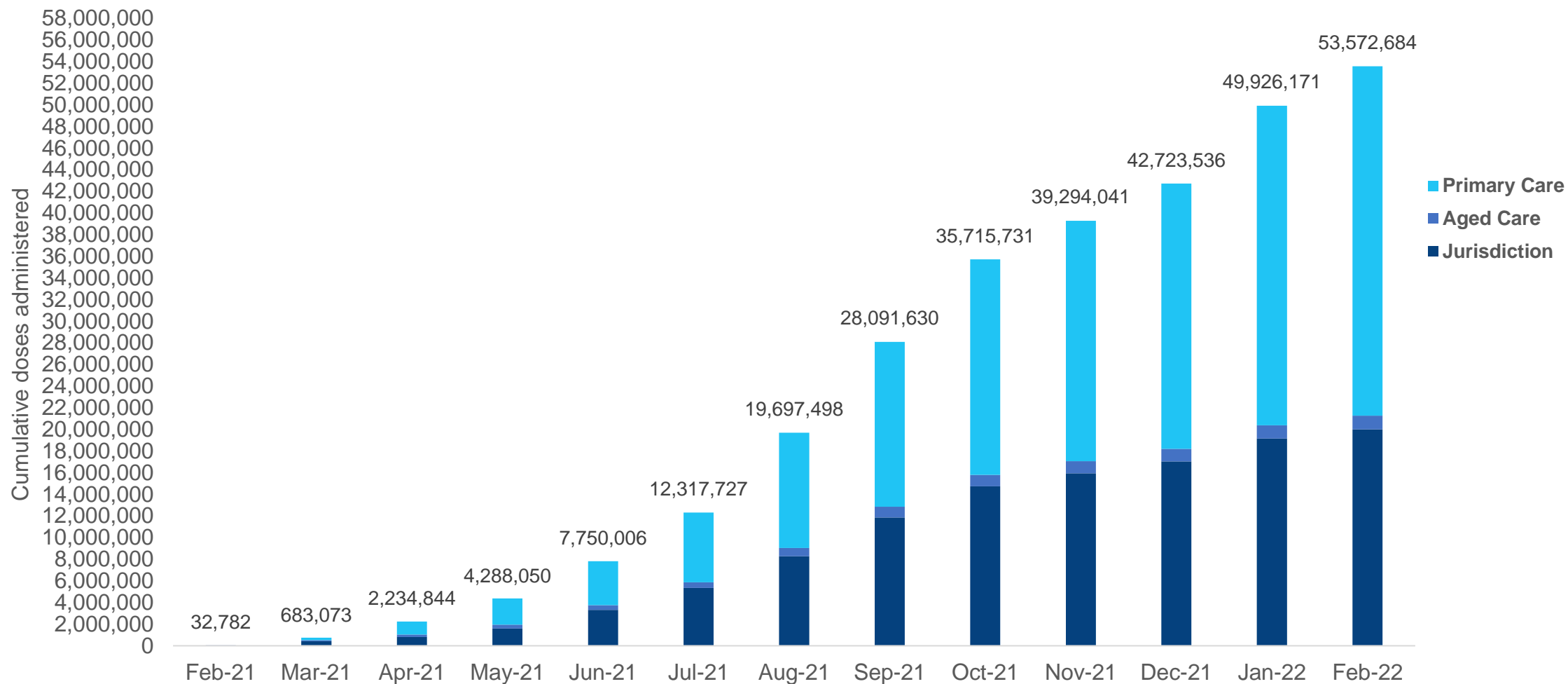
\*Sourced from the Australian Immunisation Register. Numbers are calculated as difference in daily cumulative reported numbers to allow for historical corrections.

Source: Australian Immunisation Register



# Cumulative doses administered by channel

Data as at:  
22 Feb 2022



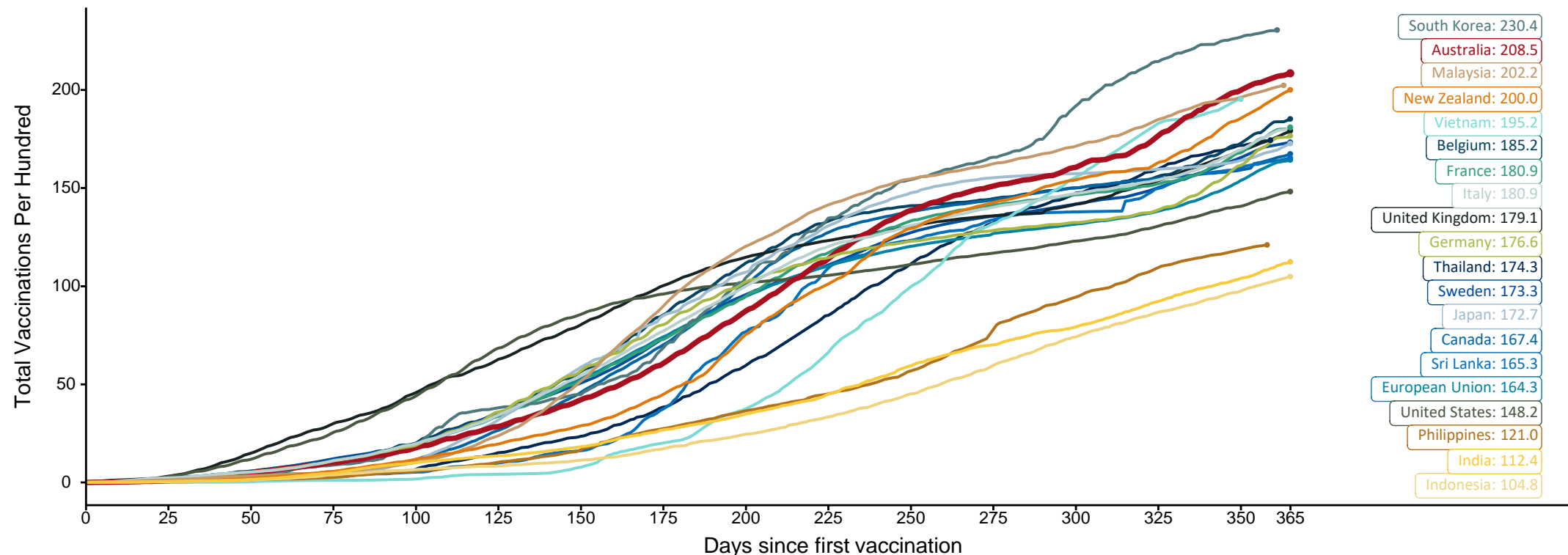
Source: Australian Immunisation Register

## Doses at equivalent stages of rollout (Day 365)

Data as at:  
22 Feb 2022

The x-axis is truncated at the length of Australia's vaccination program. Countries with intermittent reporting have had their doses per 100 imputed to Australia's current stage of rollout. Israel excluded as it is beyond scale of the graph

Cumulative doses administered (22 Feb): **53,572,684**

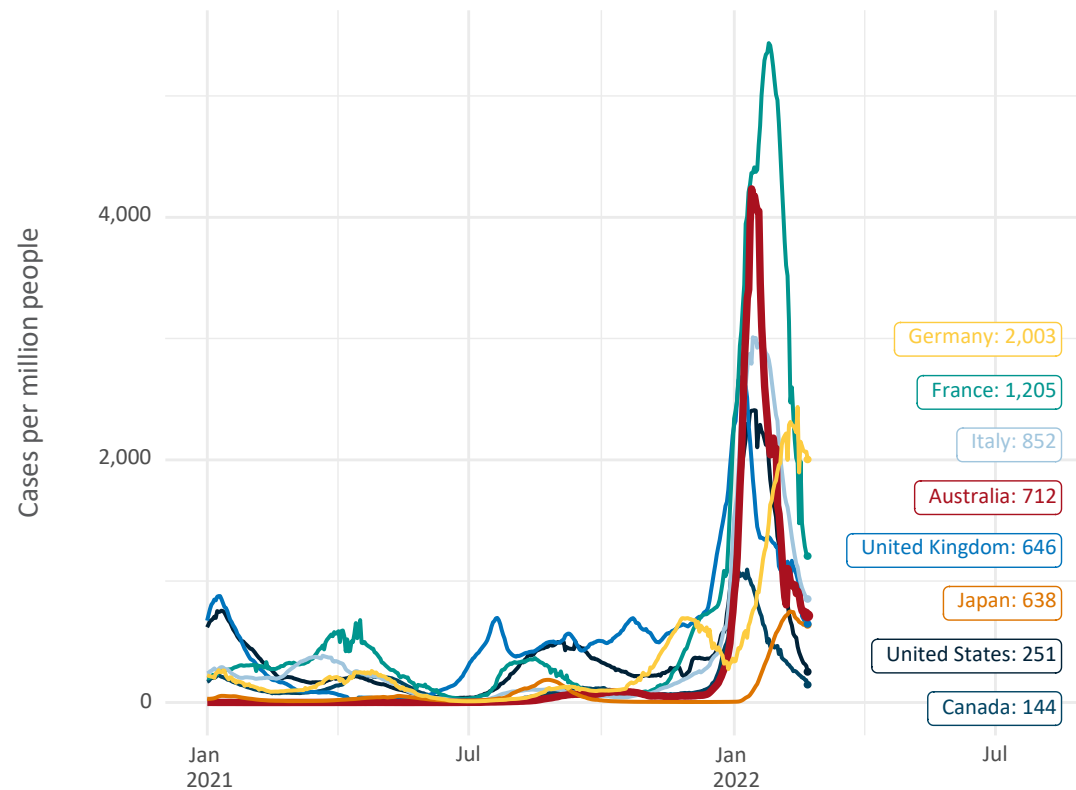


Note: From 15 September 2021, data for Australia includes all doses administered to people 12 and over. Prior to 15 September, data was for 16 and over  
Due to data revisions, Singapore has been removed from the chart  
Source: Department of Health (Australia), Our World in Data (international)  
Latest data: 22 February

Data as at:  
22 Feb 2022

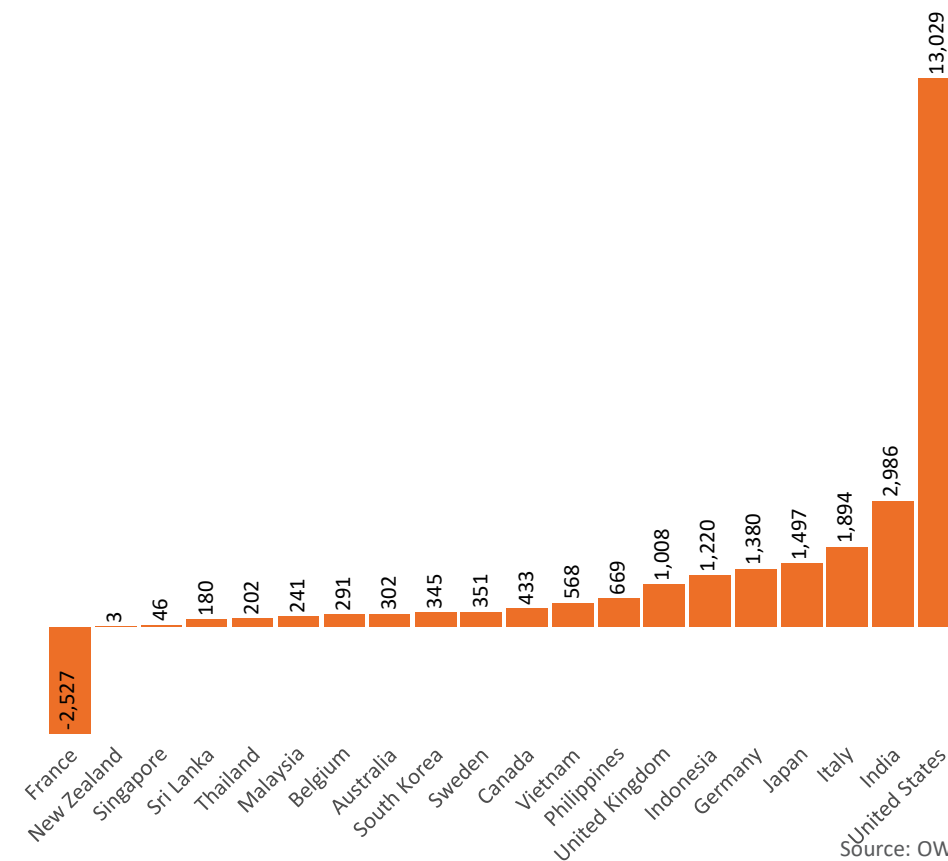
# International data – COVID-19

New daily cases per million in 2021, Australia and G7 countries  
Smoothed - 7 day average



Source: OWID  
Data downloaded: 23 Feb 2022 08:25  
Latest data: 21 Feb 2022

COVID-19 deaths in past 7 days - Australia and select countries



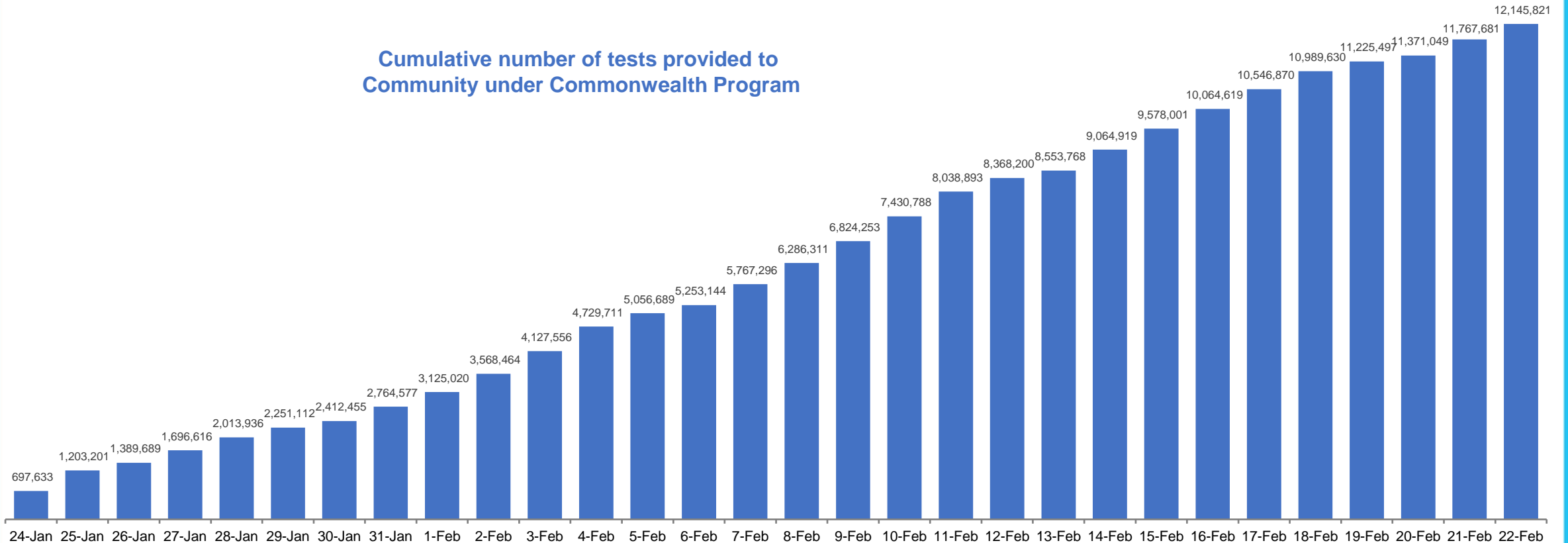
Source: OWID  
Data downloaded: 23 Feb 2022 08:25  
Latest data: 21 Feb 2022

Data as at:  
22 Feb 2022

## Concessional rapid antigen test program

**5,470 pharmacies** have delivered over **12.1 million rapid antigen tests** to more than **2.6m eligible concession card holders** under the Government's concessional rapid antigen test program.

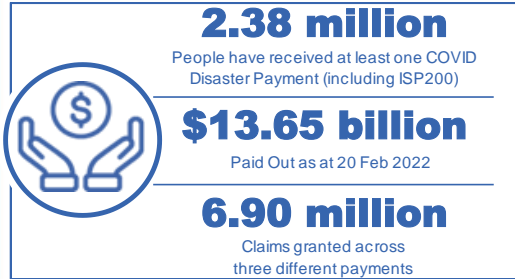
Cumulative number of tests provided to  
Community under Commonwealth Program



# Pandemic Response Payments

Australia's COVID-19  
Vaccine Roadmap

Data as at midnight: 20 Feb 2022  
Updated weekly



<b>COVID Disaster Payment:</b>	5.89 million claims received - 2.19 million individuals paid a total of \$12.59 billion.
<b>\$200 Income Support Payment:</b>	353,000 claims received - 183,000 individuals paid a total of \$268.9 million.
<b>Pandemic Leave Disaster Payment:</b>	1,069,000 claims received - 719,000 individuals paid a total of \$791.1 million.



## COVID Disaster Payment

assisting during a lockdown event in a Commonwealth hotspot.

## Income Support Payment \$200

for income support recipients who lost at least 8 hours of work.

## Pandemic Leave Disaster Payment

for those who have to self-isolate, quarantine or care.

For more information visit:  
[servicesaustralia.gov.au](https://servicesaustralia.gov.au)

## COVID-19 DISASTER PAYMENTS

### Northern Territory

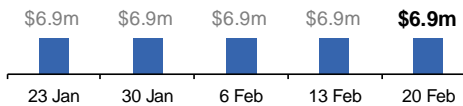
Lockdown (#3) from 16 Nov to 22 Nov  
Claiming period ended 27 Dec

**7,500 people have received at least one COVID Disaster Payment.**

**\$6.9m paid out as at 20 Feb 2022.**

**\$0 paid in initial payments in the week ending 20 Feb 2022.**

Cumulative payments made by Territory since activation on 25 Aug 2021.



### Victoria

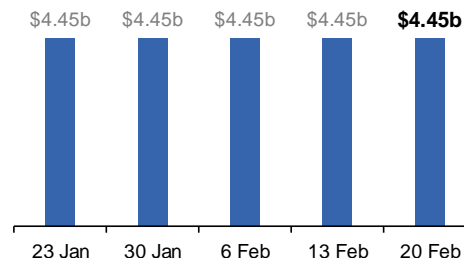
Lockdown (#6) from 6 Aug to 28 Oct  
Claiming period ended 9 Dec

**745,000 people have received at least one COVID Disaster Payment.**

**\$4.45b paid out as at 20 Feb 2022.**

**\$10,000 paid in initial and reoccurring payments in the week ending 20 Feb 2022.**

Cumulative payments made by State since activation on 8 Jun 2021.



### New South Wales

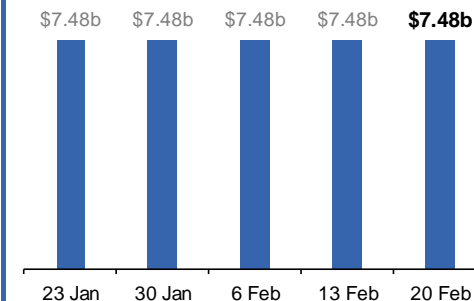
Lockdown from 24 Jun to 10 Oct  
Claiming period ended 27 Nov

**1.08m people have received at least one COVID Disaster Payment.**

**\$7.48b paid out as at 20 Feb 2022.**

**\$11,000 paid in initial and reoccurring payments in the week ending 20 Feb 2022.**

Cumulative payments made by State since activation on 1 Jul 2021.



### Australian Capital Territory

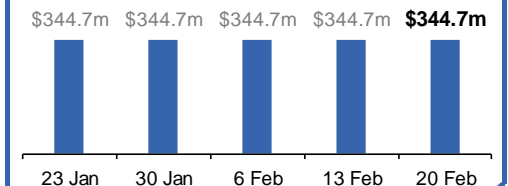
Lockdown from 12 Aug to 14 Oct  
Claiming period ended 25 Nov

**65,000 people have received at least one COVID Disaster Payment.**

**\$344.7m paid out as at 20 Feb 2022.**

**\$1,000 paid in initial and reoccurring payments in the week ending 20 Feb 2022.**

Cumulative payments made by Territory since activation on 20 Aug 2021.



# Pandemic Response Payments (continued)

Data as at midnight: 20 Feb 2022  
Updated weekly

## COVID-19 DISASTER PAYMENTS

