



**Australian Government**  
**Operation COVID Shield**

# COVID-19 Vaccine Roll-out

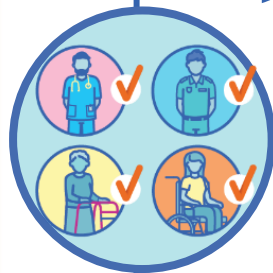
22 February 2022

Data as at:  
21 Feb 2022

## Total vaccine doses



**53,439,184** total vaccine  
doses administered nationally as at 21 February  
**+141,967** recorded in the last 24 hours



**19,819,101**

people have had at least one  
dose

**>95%**

of people over the age of 16  
have had at least one dose



**19,440,616**

people are fully vaccinated

**94.3%**

of people over the age of 16 are  
fully vaccinated



**10,940,087**

people over the age of 16  
who have received more  
than two doses

**NSW**  
**16,745,287**  
(+34,594 daily  
increase)

**VIC**  
**14,137,666**  
(+37,093 daily  
increase)

**QLD**  
**10,190,484**  
(+20,978 daily  
increase)

**WA**  
**5,647,860**  
(+26,177 daily  
increase)

**TAS**  
**1,184,854**  
(+5,325 daily  
increase)

**SA**  
**3,665,469**  
(+9,327 daily  
increase)

**ACT**  
**1,351,086**  
(+7,335 daily  
increase)

**NT**  
**516,478**  
(+1,138 daily  
increase)

\*Administration state breakdown indicates state in which a vaccine was administered

\*\*Overall dose count includes instances of more than two doses per person in a small number of cases.

Source: Australian Immunisation Register

# Booster Vaccinations

Australia's COVID-19  
Vaccine Roadmap

Data as at:  
21 Feb 2022



**10,940,087** total people over the age of 16 years old  
who have received more than two doses nationally

**+118,951** people who have received more than two doses  
nationally in the last 24 hours

**NSW**  
**3,425,896**  
(31,224 daily  
increase)

**VIC**  
**2,984,320**  
(33,400 daily  
increase)

**QLD**  
**1,918,123**  
(17,713 daily  
increase)

**WA**  
**1,206,450**  
(20,568 daily  
increase)

**TAS**  
**239,519**  
(4,276 daily  
increase)

**SA**  
**773,405**  
(7,877 daily  
increase)

**ACT**  
**229,574**  
(1,926 daily  
increase)

**NT**  
**86,991**  
(1,033 daily  
increase)

**75,809**

doses administered to persons  
residing in other territories or with  
missing residential information

Source: Australian Immunisation Register

# Vaccinations by residential location

Australia's COVID-19  
Vaccine Roadmap

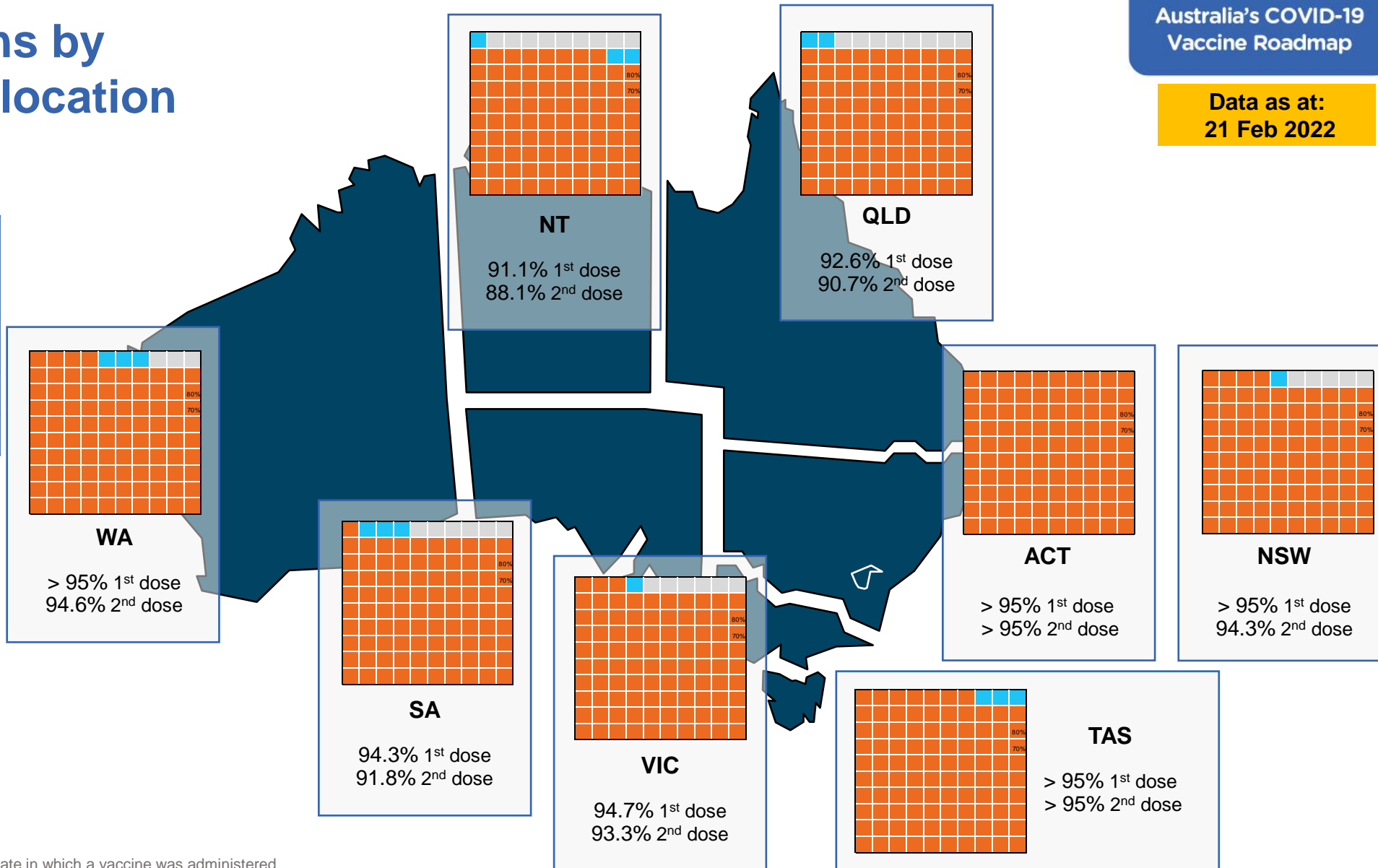
Data as at:  
21 Feb 2022

## First doses

Age	Today	4 weeks ago	8 weeks ago
16+	>95%	>95%	94.6%
50+	>95%	>95%	>95%
70+	>95%	>95%	>95%

## Fully vaccinated

Age	Today	4 weeks ago	8 weeks ago
16+	94.3%	93.3%	91.6%
50+	>95%	>95%	>95%
70+	>95%	>95%	>95%



\*Residential state may differ from the state in which a vaccine was administered

# Commonwealth and Jurisdiction vaccine doses administered

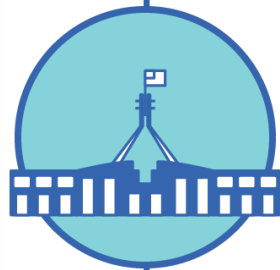
Data as at:  
21 Feb 2022



**53,439,184** total vaccine  
doses administered nationally as at 21 February  
**+ 141,967** recorded in the last 24 hours



**19,981,209**  
doses administered by state  
and territory facilities  
**+ 28,886**  
recorded in the last 24 hours



**33,457,975**  
doses administered by  
commonwealth facilities  
**+ 113,081**  
recorded in the last 24 hours

**32,206,393** total vaccine doses  
administered in primary care settings  
**1,251,582** total vaccine doses  
administered in aged care and disability  
settings

NSW	Jurisdictions	Commonwealth
Cumulative	4,935,662	11,809,625
Daily increase	3,002	31,592

VIC	Jurisdictions	Commonwealth
Cumulative	5,792,967	8,344,699
Daily increase	8,061	29,032

QLD	Jurisdictions	Commonwealth
Cumulative	3,690,002	6,500,482
Daily increase	2,969	18,009

WA	Jurisdictions	Commonwealth
Cumulative	2,308,662	3,339,198
Daily increase	6,888	19,289

TAS	Jurisdictions	Commonwealth
Cumulative	580,440	604,414
Daily increase	1,928	3,397

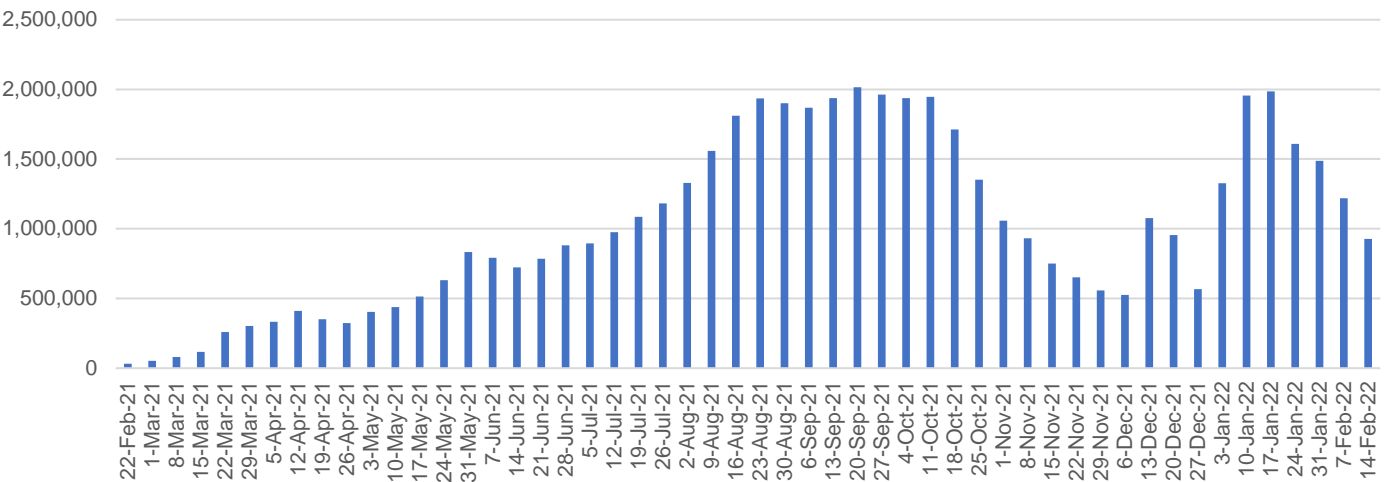
SA	Jurisdictions	Commonwealth
Cumulative	1,683,999	1,981,470
Daily increase	2,641	6,686

ACT	Jurisdictions	Commonwealth
Cumulative	686,918	664,168
Daily increase	2,750	4,585

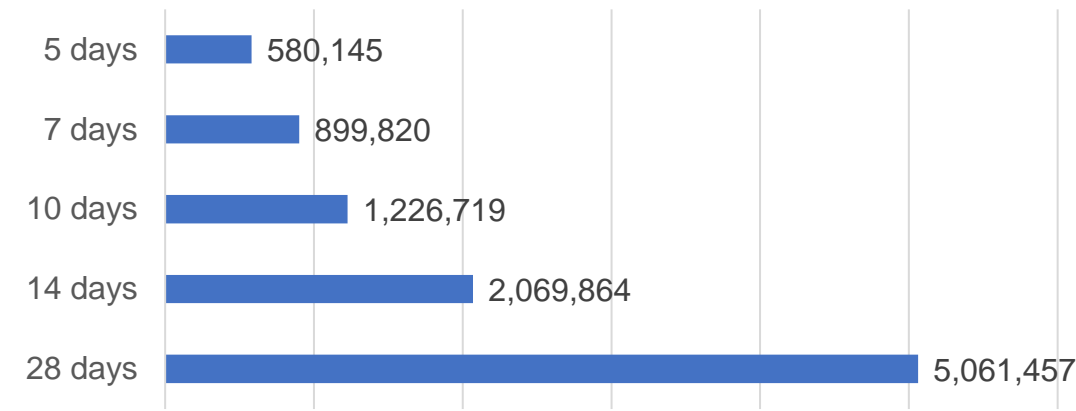
NT	Jurisdictions	Commonwealth
Cumulative	302,559	213,919
Daily increase	647	491

# Vaccine milestone charts

Doses Administered by Week



Doses Reported

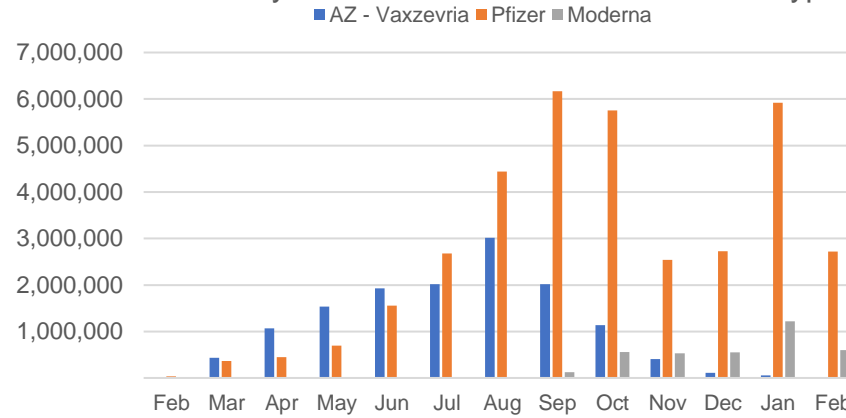


\*Sourced from the Australian Immunisation Register.

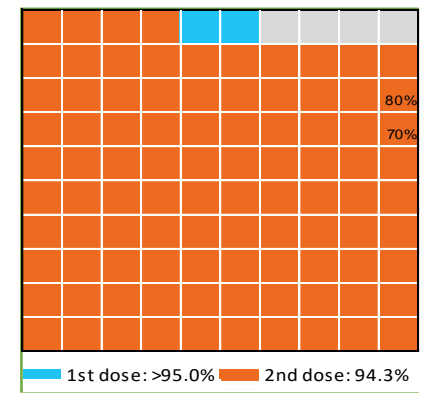
Data as at:  
21 Feb 2022

Australia's COVID-19  
Vaccine Roadmap

Doses by administration month and vaccine type



Eligible population percentage coverage



\*Each square represents 1% of the national population. Squares are filled as milestones are achieved.

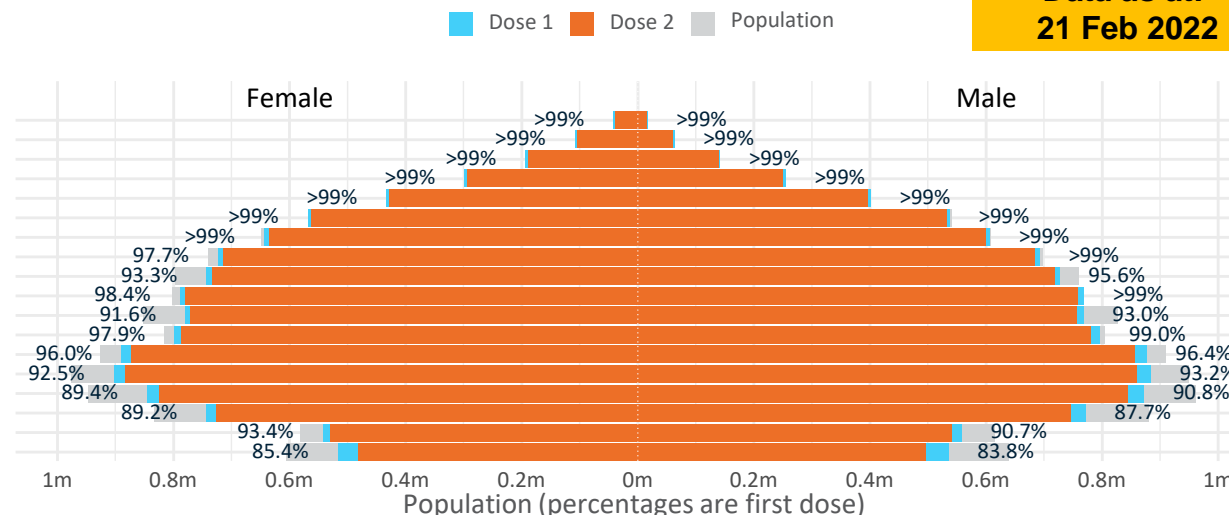
Data as at:  
21 Feb 2022

# Doses by age and sex

First and second doses by age and sex

	16+	50+	12-15	5-11
Dose 1	<b>96.12%</b> (19,819,101 doses / 20,619,959 people)	<b>&gt;99%</b> (8,758,306 doses / 8,749,703 people)	<b>84.59%</b> (1,052,311 doses / 1,243,990 people)	<b>49.23%</b> (1,120,855 doses / 2,276,638 people)
Dose 2	<b>94.28%</b> (19,440,616 doses / 20,619,959 people)	<b>98.72%</b> (8,637,889 doses / 8,749,703 people)	<b>78.61%</b> (977,904 doses / 1,243,990 people)	<b>0.64%</b> (14,524 doses / 2,276,638 people)

Age	Dose 1	Dose 2
95+	58,083 (>99%)	54,554 (>99%)
90-94	171,384 (>99%)	165,137 (>99%)
85-89	335,755 (>99%)	327,688 (>99%)
80-84	553,518 (>99%)	544,837 (>99%)
75-79	835,018 (>99%)	825,306 (>99%)
70-74	1,106,640 (>99%)	1,094,273 (>99%)
65-69	1,251,747 (>99%)	1,236,283 (98.3%)
60-64	1,416,721 (98.6%)	1,398,886 (97.4%)
55-59	1,470,646 (94.5%)	1,452,139 (93.3%)
50-54	1,558,794 (>99%)	1,538,786 (98.4%)
45-49	1,548,914 (92.4%)	1,526,583 (91.0%)
40-44	1,597,349 (98.6%)	1,569,176 (96.9%)
35-39	1,770,402 (96.5%)	1,733,472 (94.5%)
30-34	1,794,680 (93.3%)	1,748,217 (90.9%)
25-29	1,728,024 (90.6%)	1,677,007 (88.0%)
20-24	1,520,422 (88.8%)	1,477,388 (86.3%)
16-19	1,101,004 (92.1%)	1,070,884 (89.6%)
12-15	1,052,311 (84.6%)	977,904 (78.6%)

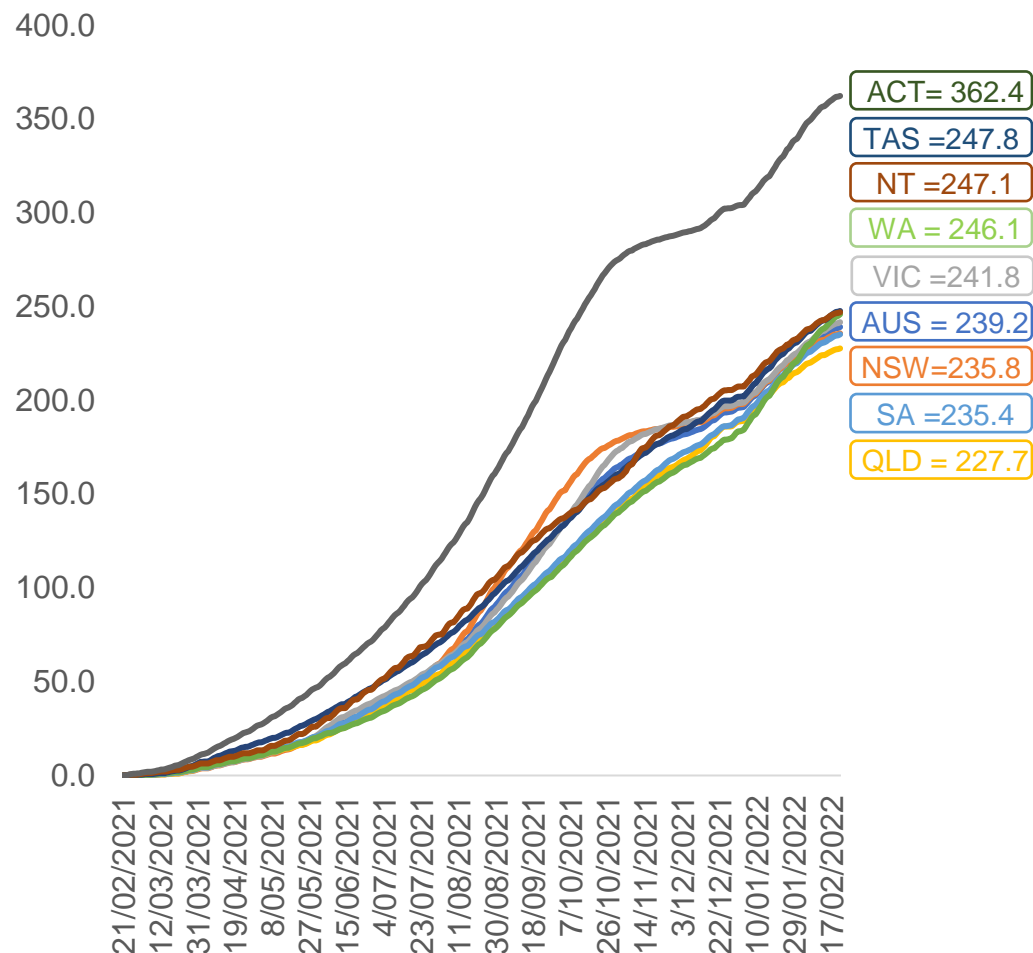


	AUS	ACT	NSW	NT	QLD	SA	TAS	VIC	WA
16 and over - dose 1	19,819,101	350,267	6,283,897	173,526	3,807,812	1,358,630	440,423	5,119,245	2,056,927
16 and over - dose 2	19,440,616	345,063	6,190,526	167,983	3,728,615	1,322,214	429,438	5,045,875	2,000,247
16 and over - population	20,619,959*	344,037	6,565,651	190,571	4,112,707	1,440,400	440,172	5,407,574	2,114,978
16 and over % with dose 1	96.12%	>99%	95.71%	91.06%	92.59%	94.32%	>99%	94.67%	97.26%
16 and over % with dose 2	94.28%	>99%	94.29%	88.15%	90.66%	91.79%	97.56%	93.31%	94.58%
5 to 11 - dose 1	1,120,855	30,712	335,758	12,365	202,035	80,463	27,640	310,460	114,544
5 to 11 - dose 2	14,524	212	6,048	95	2,408	368	71	4,666	569
5 to 11 - population	2,276,638	39,789	716,460	24,750	478,731	148,816	45,033	578,499	244,154
5 to 11 % with dose 1	49.23%	77.19%	46.86%	49.96%	42.20%	54.07%	61.38%	53.67%	46.91%
5 to 11 % with dose 2	0.64%	0.53%	0.84%	0.38%	0.50%	0.25%	0.16%	0.81%	0.23%
12 to 15 - dose 1	1,052,311	20,079	326,229	10,893	207,640	68,106	22,820	276,058	111,157
12 to 15 - dose 2	977,904	19,185	308,456	9,601	190,304	62,863	21,097	261,483	96,955
12 to 15 - population	1,243,990	19,693	390,330	13,060	270,146	82,747	26,308	308,611	132,869
12 to 15 % with dose 1	84.59%	>99%	83.58%	83.41%	76.86%	82.31%	86.74%	89.45%	83.66%
12 to 15 % with dose 2	78.61%	97.42%	79.02%	73.51%	70.44%	75.97%	80.19%	84.73%	72.97%

\*National population will not equal sum of listed jurisdictions due to a small number of people counted in national population residing in some 'other' territories. Sum of state doses will not add to national total as some records are unable to be geocoded to a State or Territory.  
Doses sourced from Australian Immunisation Register, population from ABS ERP June 2020

# Vaccinations by location

Cumulative total doses administered vs eligible state populations\*

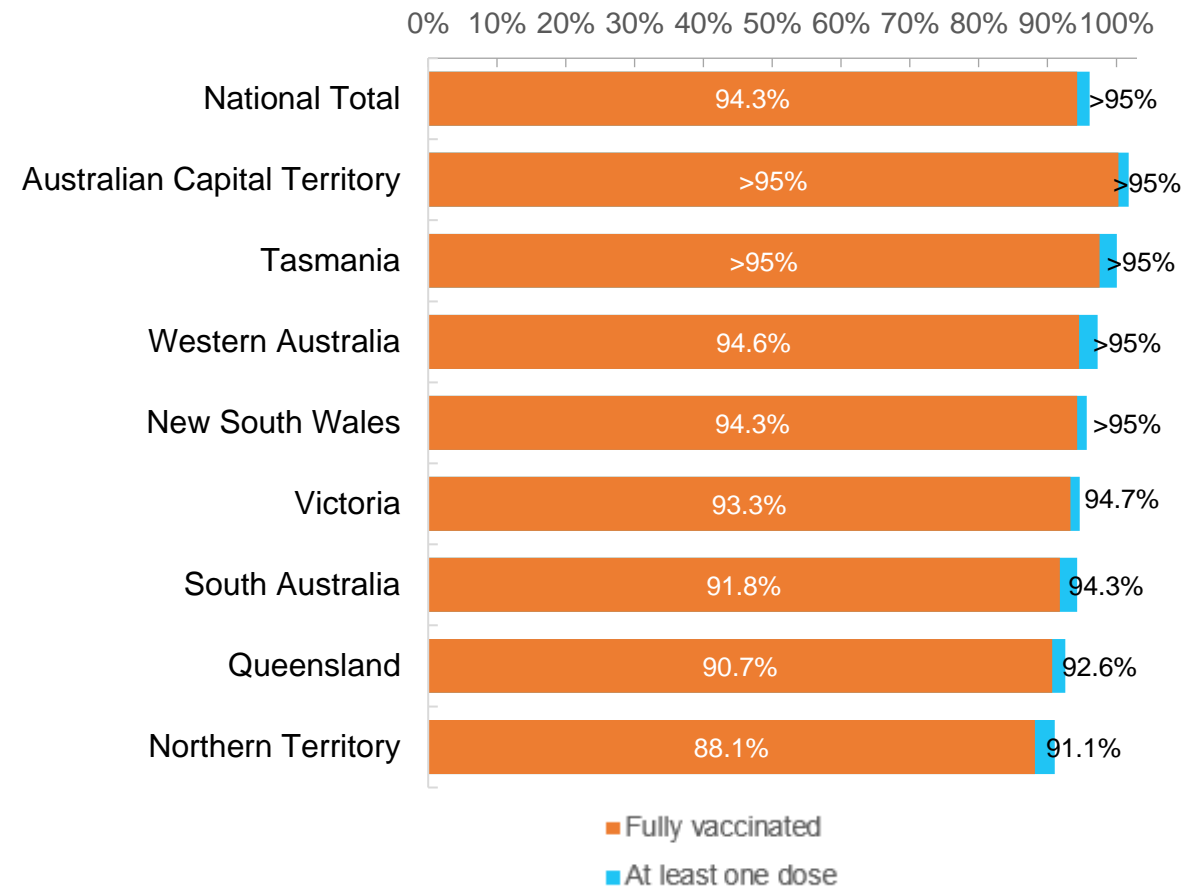


\*Not an indication of percentage vaccinated, numbers will exceed 100 due to multiple doses required per person of the population. All doses are included for those aged 12 and above, and are based on vaccination provider location.

Data as at:  
21 Feb 2022

Australia's COVID-19  
Vaccine Roadmap

First and Second Doses by residential location





# Aboriginal and Torres Strait Islander peoples

## Number of people vaccinated

Data as at:  
15 Feb 2022  
Updated weekly

Australia's COVID-19  
Vaccine Roadmap



**429,831**

people over the age of 16  
have had at least one dose

**82.7%**

of people over the age of 16  
have had at least one dose



**402,335**

people over the age of 16  
are fully vaccinated

**77.4%**

of people over the age of 16 are  
fully vaccinated



**47,215  
(66.6%)**

people aged 12-15 years  
have had at least one dose

### 175 Aboriginal community controlled health services (ACCHS)

0#	50	27	43	12	3	21	19
ACT	NSW	NT	QLD	SA	TAS	VIC	WA

Medicare Address State <sup>##</sup>	Individuals Dose 1	Individuals Dose 1 %	Individuals Dose 2	Individuals Dose 2 %
Australian Capital Territory	4,870	91.3%	4,731	88.7%
New South Wales	134,909	86.5%	131,405	84.2%
Northern Territory	41,631	88.2%	38,436	81.4%
Queensland	113,396	80.0%	105,656	74.5%
South Australia	19,495	78.1%	17,637	70.7%
Tasmania	14,144	87.8%	13,533	84.0%
Victoria	35,147	89.1%	34,208	86.8%
Western Australia	49,922	79.3%	42,743	67.9%
Unknown/Other Territories	16,317	62.8%	13,986	53.9%
<b>Totals</b>	<b>429,831</b>	<b>82.7%</b>	<b>402,335</b>	<b>77.4%</b>

Source: Australian Immunisation Register

\*Identifying as Aboriginal and Torres Strait Islander is optional and the estimated population may be under reported.

\*\*Includes all Aboriginal and Torres Strait Islander peoples who have received a vaccination, not limited to those administered in an ACCHS setting

#ACCHS in the ACT are currently operating as a Commonwealth Vaccine Clinics so not included to avoid double counting

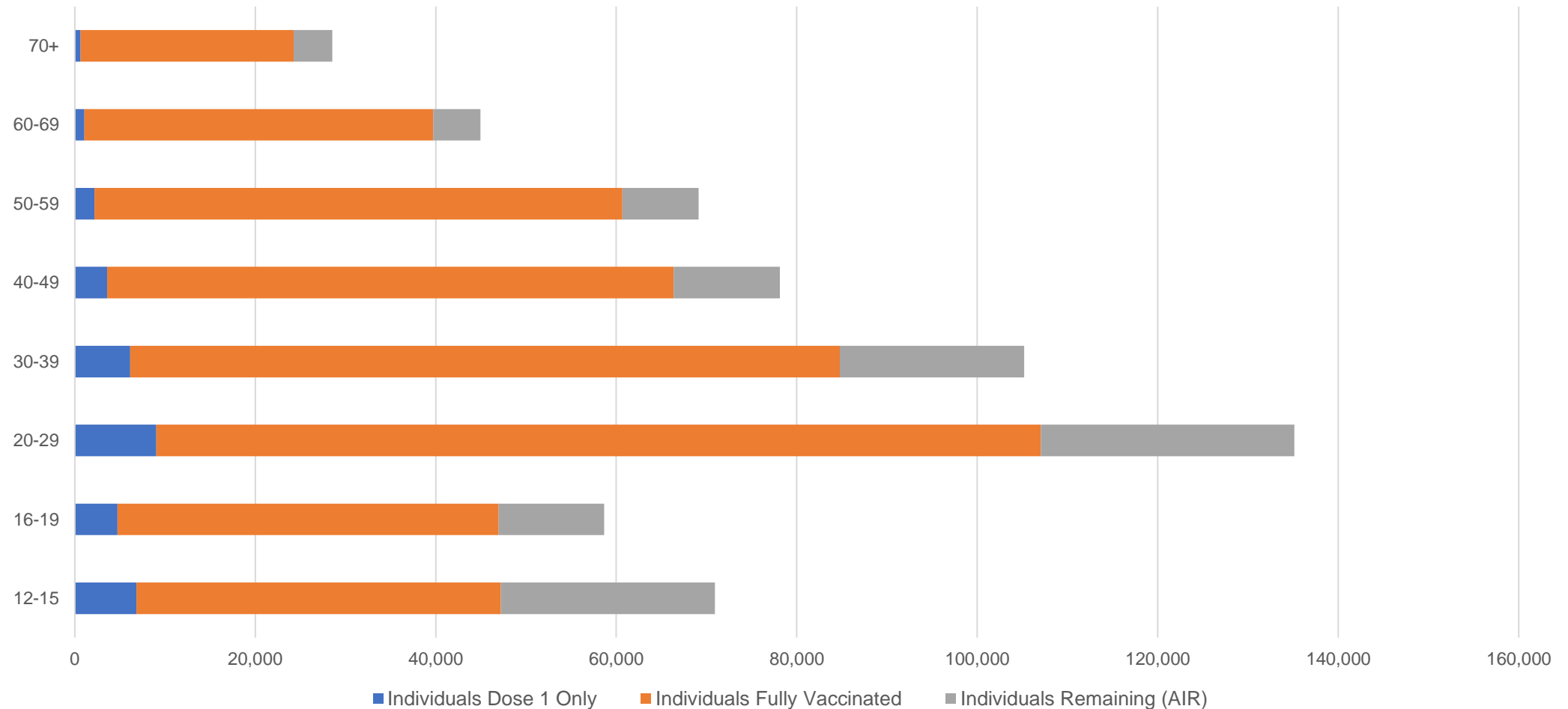
##The above table includes all identified Aboriginal and Torres Strait Islander people who are aged 16 and above by their state of residence.

# Aboriginal and Torres Strait Islander peoples

## Number of people vaccinated by age

Data as at:  
15 Feb 2022  
Updated weekly

Australia's COVID-19  
Vaccine Roadmap



Source: Australian Immunisation Register

# Commonwealth primary care

Data as at:  
21 Feb 2022

Australia's COVID-19  
Vaccine Roadmap



## Primary care vaccine administration sites

<b>5,769</b>	<b>128</b>	<b>176</b>	<b>3,545</b>
GPs	CVCs	ACCHS	Pharmacies



**32,206,393** total vaccine doses administered  
primary care settings as at 21 February  
**+ 112,482** recorded in the last 24 hours

## Primary care vaccinations by provider type

	Doses administered	Daily increase	7 day increase
General Practice* includes other Commonwealth	26,413,806	72,470	445,464
Pharmacy	5,792,587	40,012	239,604

**NSW**  
**11,274,243**  
(+31,861 daily increase)

**VIC**  
**8,042,104**  
(+28,856 daily increase)

**QLD**  
**6,227,126**  
(+19,072 daily increase)

**WA**  
**3,218,804**  
(+19,497 daily increase)

**TAS**  
**586,055**  
(+3,432 daily increase)

**SA**  
**1,905,695**  
(+6,987 daily increase)

**ACT**  
**511,386**  
(+1,954 daily increase)

**NT**  
**193,414**  
(+660 daily increase)

**247,566**

doses administered to persons  
residing in other territories or with  
missing residential information

\*General practice includes Commonwealth Vaccination Clinics, Aboriginal Community Health Centres, Royal Flying Doctor Service and other Commonwealth vaccination facilities

Source: Australian Immunisation Register

Data as at:  
21 Feb 2022

# Commonwealth aged care and disability doses administered



**1,251,582** (+ 599 last 24 hours)

Total vaccine doses administered in aged care and disability facilities as at 21 February

Number of doses administered as part of the Commonwealth aged and disability care rollout

**NSW**  
**555,360**  
(+153 daily increase)

**VIC**  
**238,699**  
(+110 daily increase)

**QLD**  
**197,394**  
(+96 daily increase)

**WA**  
**99,412**  
(+170 daily increase)

**TAS**  
**22,174**  
(+3 daily increase)

**SA**  
**83,492**  
(+0 daily increase)

**ACT**  
**16,294**  
(+17 daily increase)

**NT**  
**7,240**  
(+21 daily increase)

**31,517**

doses administered to persons  
residing in other territories or with  
missing residential information

\*Sourced from the Australian Immunisation Register. Includes all persons vaccinated at participating residential aged care, disability and related industry settings.

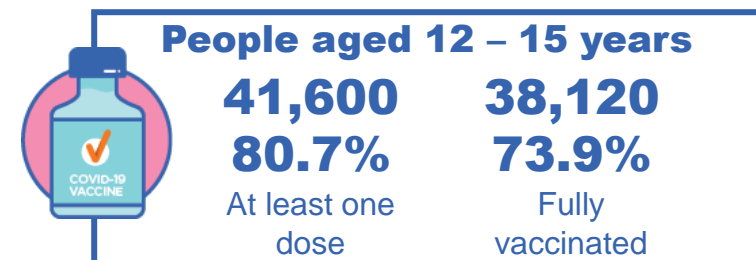
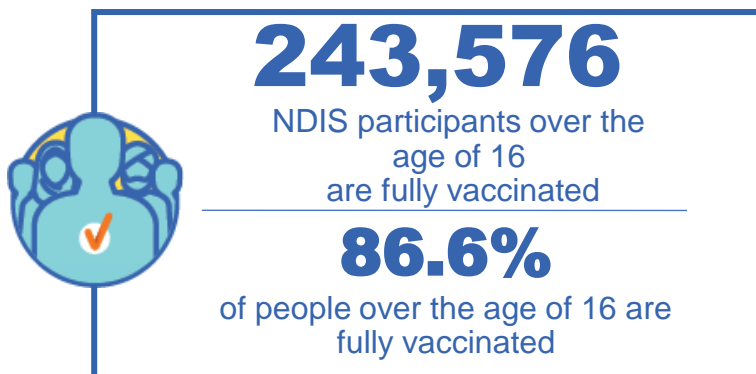
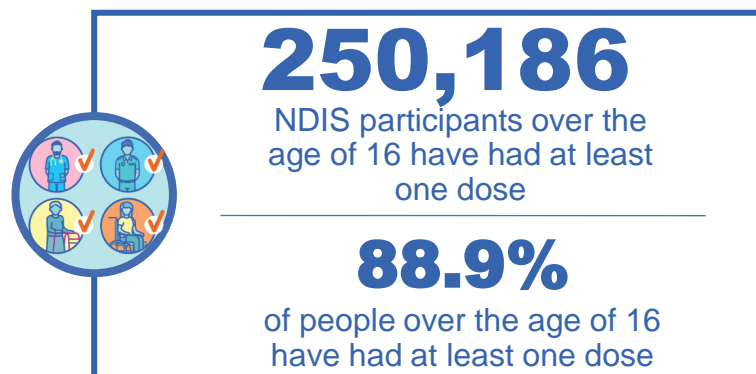
\*\*State level breakdown indicates the residential location and may not align to the state in which the vaccination occurred.

Source: Australian Immunisation Register

# National Disability Insurance Scheme (NDIS) reported vaccinations

Data as at:  
17 February 2022  
Updated weekly

Australia's COVID-19  
Vaccine Roadmap



## NDIS participant vaccinations

	People aged 16+ with at least one dose	People aged 16+ fully vaccinated	% People aged 16+ with at least one dose	% People aged 16+ fully vaccinated
ACT	4,785	4,714	91.0%	89.7%
NSW	77,542	76,177	89.4%	87.8%
NT	2,171	2,062	80.3%	76.2%
QLD	48,996	47,592	88.1%	85.6%
SA	20,307	19,544	86.6%	83.3%
TAS	6,252	6,023	88.8%	85.6%
VIC	66,808	65,484	90.1%	88.3%
WA	23,325	21,980	88.8%	83.6%
National	250,186	243,576	88.9%	86.6%

Source: Linkage between National Disability Insurance Agency data and the Australian Immunisation Register. Total NDIS participant numbers as at 17th October. Australian Immunisation Register data as at 16 February. Includes all participants regardless of residence type.

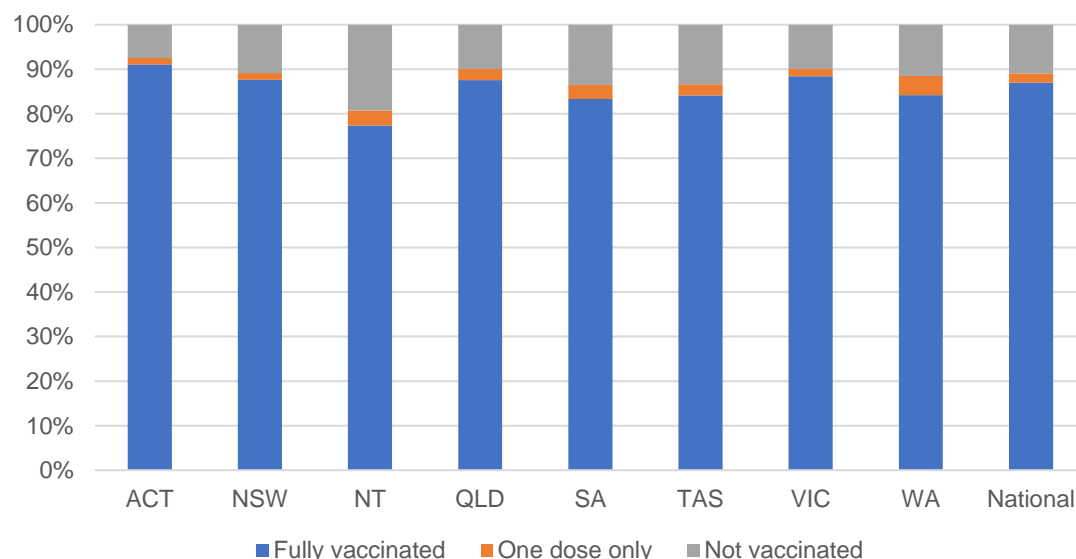
# National Disability Insurance Scheme (NDIS) reported vaccinations

Data as at:  
17 February 2022  
Updated Weekly

Australia's COVID-19  
Vaccine Roadmap

NATIONAL	Total people with at least one dose	People fully vaccinated	Total number of individuals in cohort	% People with at least one dose	% People fully vaccinated
NDIS participants living in disability accommodation	20,386	19,920	22,800	89.4%	87.4%

## NDIS participants in disability and aged care accommodation



Source: Linkage between National Disability Insurance Agency data and the Australian Immunisation Register. Includes participants residing in disability accommodation only.

Source: Total NDIS participant numbers as at 17th October. Participant data as at 15 February. Australian Immunisation Register data as at 16 February. Worker data as at 17 February.

## NDIS workforce vaccinations

	NDIS workers with at least one dose	NDIS workers fully vaccinated	% NDIS workers with at least one dose	% NDIS workers fully vaccinated
NSW	120,986	120,467	97.8%	97.3%
VIC	107,032	106,261	98.0%	97.3%
QLD	66,840	66,049	96.7%	95.5%
WA	31,941	30,735	97.6%	94.0%
SA	34,443	33,560	98.2%	95.7%
TAS	10,612	10,470	99.5%	98.2%
ACT	3,474	3,465	99.5%	99.3%
NT	3,244	3,201	99.4%	98.1%
<b>TOTAL</b>	<b>378,572</b>	<b>374,208</b>	<b>97.7%</b>	<b>96.6%</b>

Source: the NDIS Commission has established a requirement for registered NDIS providers who provide intensive disability support services to report on the vaccination status of workers they employ, or otherwise engage, to deliver NDIS-funded supports and services, and who are required to be vaccinated in accordance with in-force state and territory public health orders. The statistics reflect data reported to the NDIS Commission by registered NDIS providers and should be considered indicative and subject to change

Note: Some registered NDIS providers are yet to report on the vaccination status of their workforce. The NDIS Commission is working with those providers around reporting requirements.

Remaining workers not included include those exempt from vaccination requirements, workers whose vaccination status is not yet verified by the provider (such as workers on leave) and provider reporting anomalies.

# Residential aged care vaccination rollout

Data as at:  
21 Feb 2022

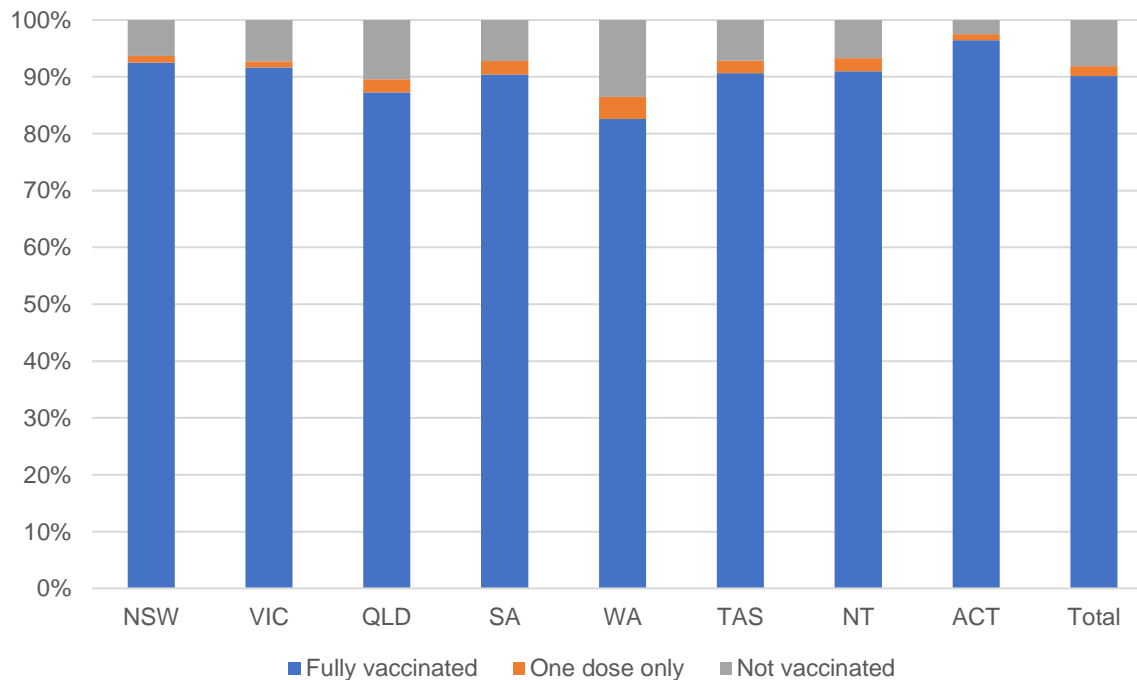
Residential aged care facilities status

**100%**  
Commonwealth facilities visited (2,541 planned sites)

**172,198**  
People fully vaccinated

**175,546**  
People with at least one dose

## Aged care resident vaccinations



## Aged care worker vaccinations

Jurisdictions	Total workers with at least one dose	Workers fully vaccinated	% Workers with at least one dose	% Workers fully vaccinated
NSW	78,827	78,800	99.2%	99.1%
VIC	68,849	68,848	98.4%	98.4%
QLD	48,724	48,680	98.6%	98.5%
SA	27,106	27,078	98.9%	98.8%
WA	23,737	23,734	98.9%	98.9%
TAS	7,640	7,640	100.0%	100.0%
NT	875	875	100.0%	100.0%
ACT	3,027	3,027	100.0%	100.0%
Total	258,785	258,682	98.8%	98.8%

Source: My Aged Care Portal vaccination progress

\*Status updates are provided by facilities at least once per week. Reporting is updated Monday to Friday to encompass different facility updates being made on different days.

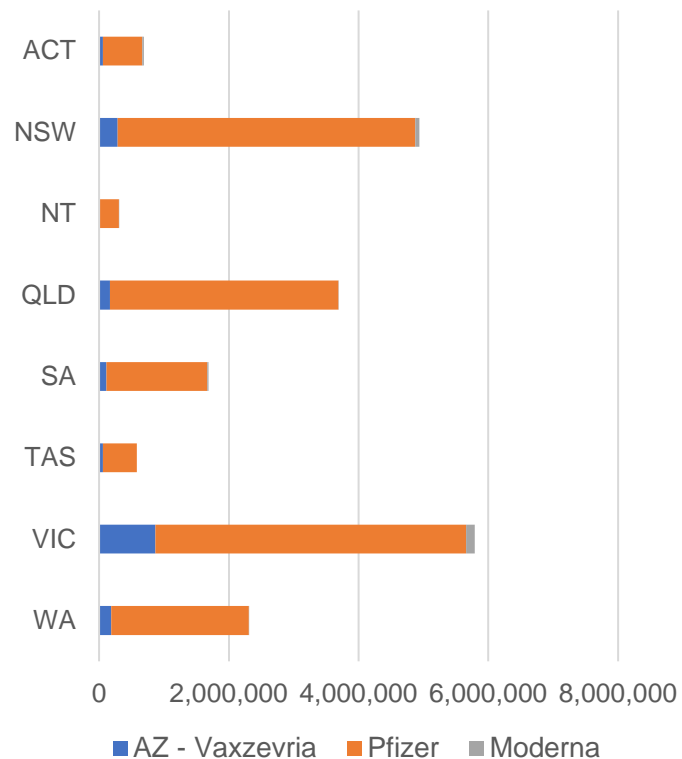
Data is sourced directly from Aged Care Service Providers and is not drawn or closely aligned with data from AIR due to inconsistencies and potential lags in uploading of records.



Data as at:  
21 Feb 2022

## Jurisdiction administered

Total vaccine doses administered in State and Territory clinics as at 21 February



**19,981,209** total vaccine doses administered  
in State and Territory clinics as at 21 February  
+ **28,886** recorded in the last 24 hours  
+ **208,705** recorded in the last 7 days

**NSW**  
**4,935,662**  
(+3,002 daily  
increase)

**VIC**  
**5,792,967**  
(+8,061 daily  
increase)

**QLD**  
**3,690,002**  
(+2,969 daily  
increase)

**WA**  
**2,308,662**  
(+6,888 daily  
increase)

**TAS**  
**580,440**  
(+1,928 daily  
increase)

**SA**  
**1,683,999**  
(+2,641 daily  
increase)

**ACT**  
**686,918**  
(+2,750 daily  
increase)

**NT**  
**302,559**  
(+647 daily  
increase)

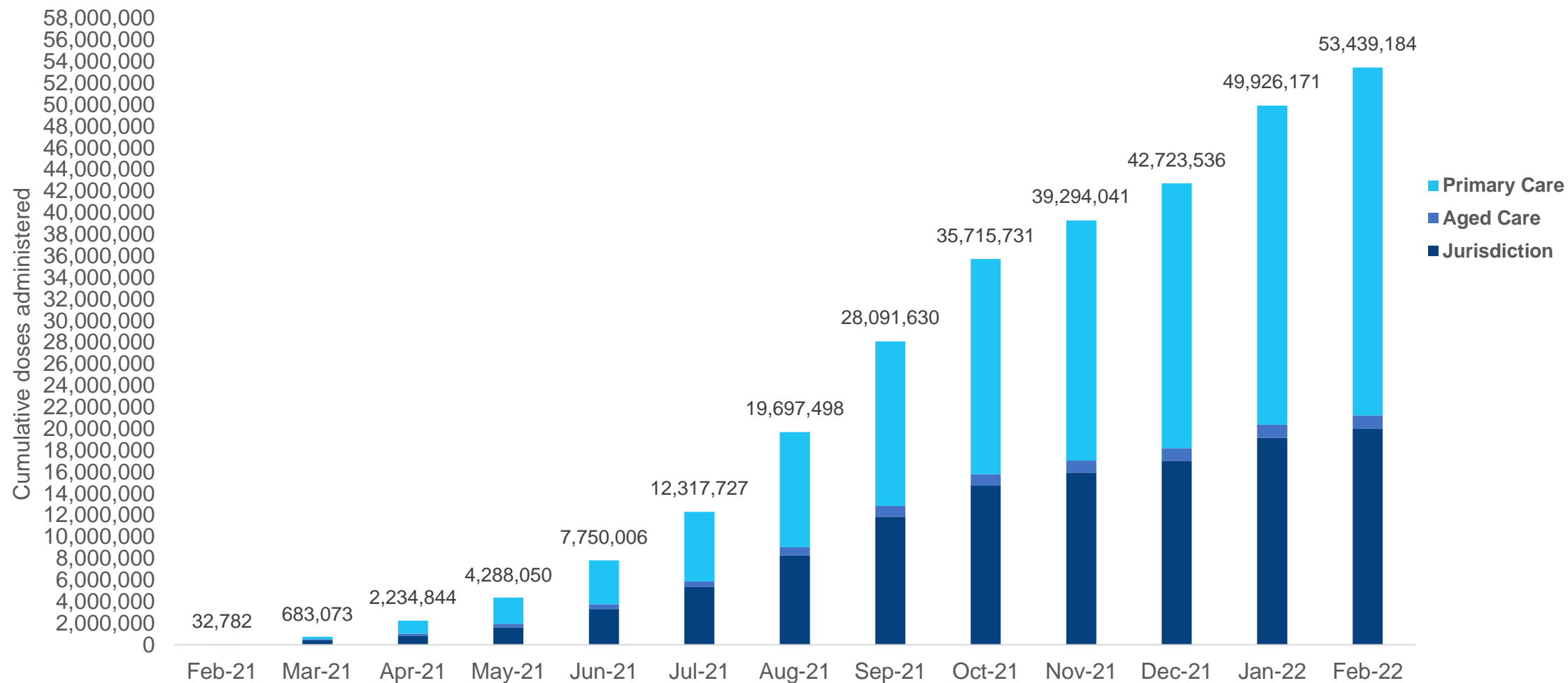
\*Sourced from the Australian Immunisation Register. Numbers are calculated as difference in daily cumulative reported numbers to allow for historical corrections.

Source: Australian Immunisation Register



# Cumulative doses administered by channel

Data as at:  
21 Feb 2022



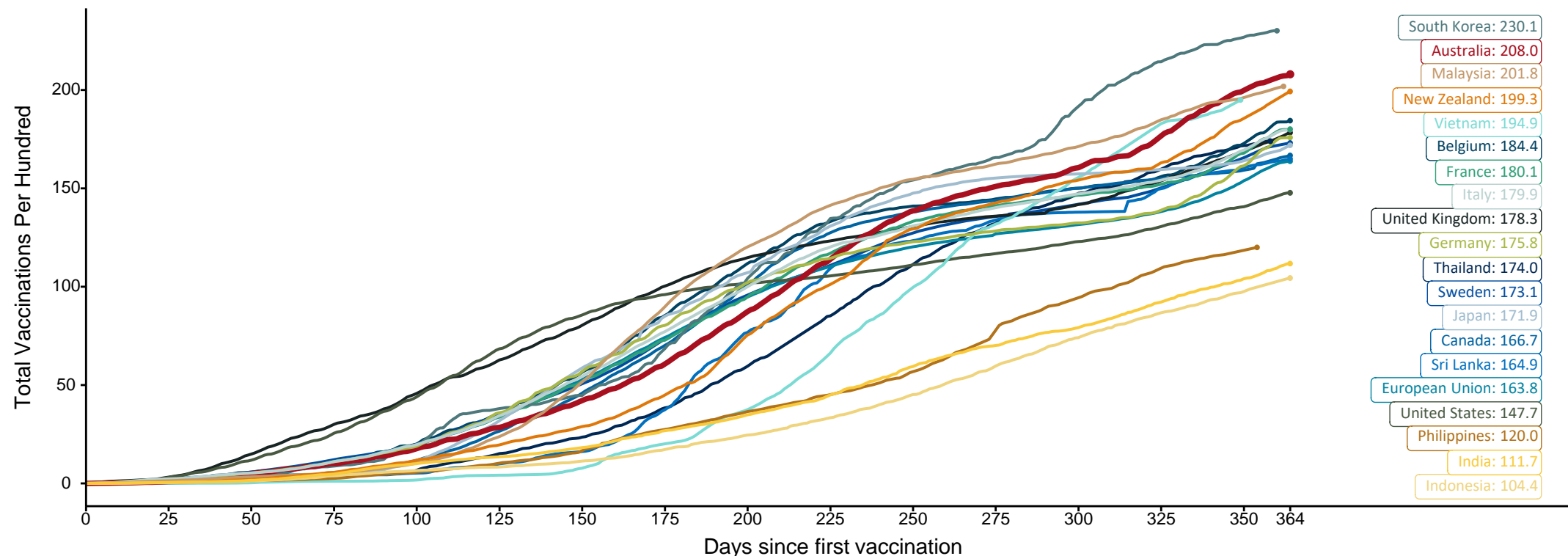
Source: Australian Immunisation Register

## Doses at equivalent stages of rollout (Day 364)

Data as at:  
21 Feb 2022

The x-axis is truncated at the length of Australia's vaccination program. Countries with intermittent reporting have had their doses per 100 imputed to Australia's current stage of rollout. Israel excluded as it is beyond scale of the graph

Cumulative doses administered (21 Feb): **53,439,184**

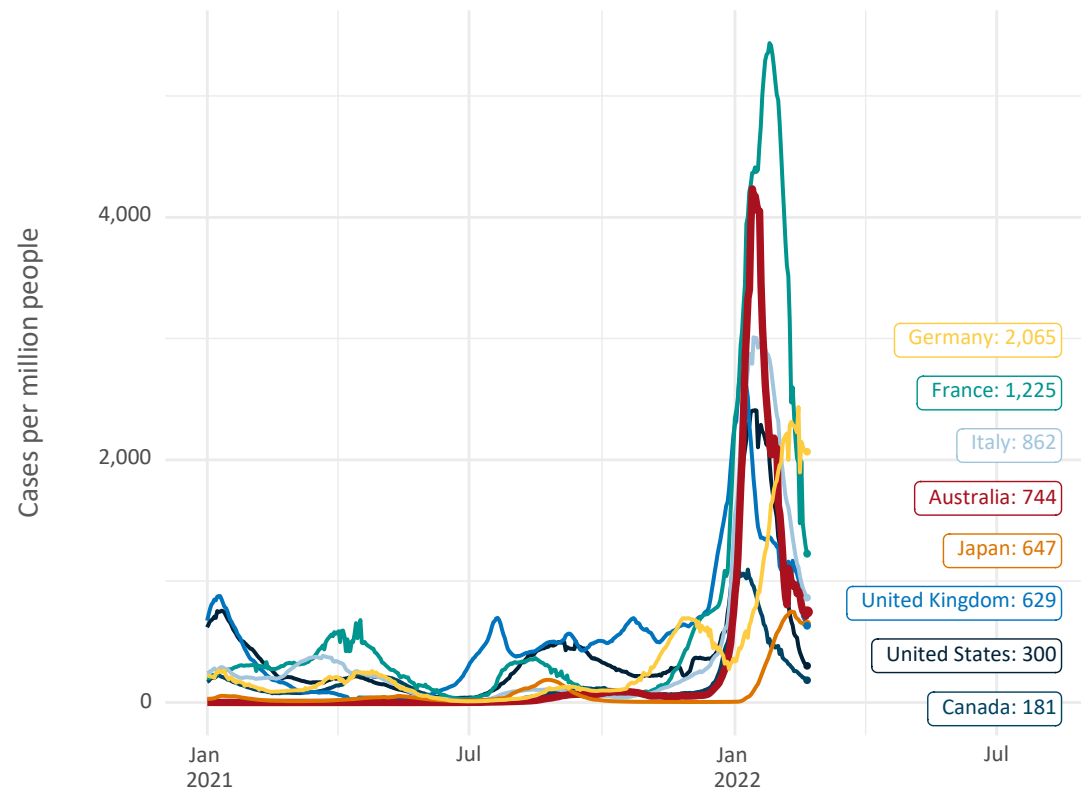


Note: From 15 September 2021, data for Australia includes all doses administered to people 12 and over. Prior to 15 September, data was for 16 and over  
Due to data revisions, Singapore has been removed from the chart  
Source: Department of Health (Australia), Our World in Data (international)  
Latest data: 21 February

# International data – COVID-19

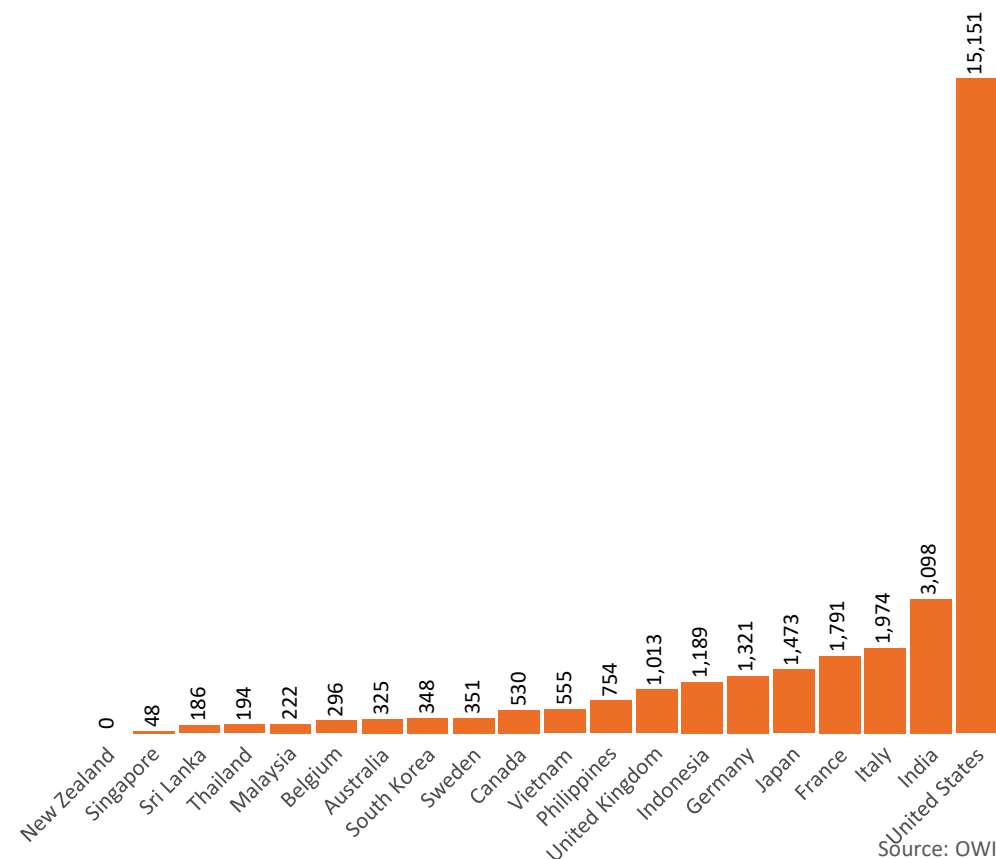
Data as at:  
21 Feb 2022

New daily cases per million in 2021, Australia and G7 countries  
Smoothed - 7 day average



Source: OWID  
Data downloaded: 22 Feb 2022 08:14  
Latest data: 20 Feb 2022

COVID-19 deaths in past 7 days - Australia and select countries



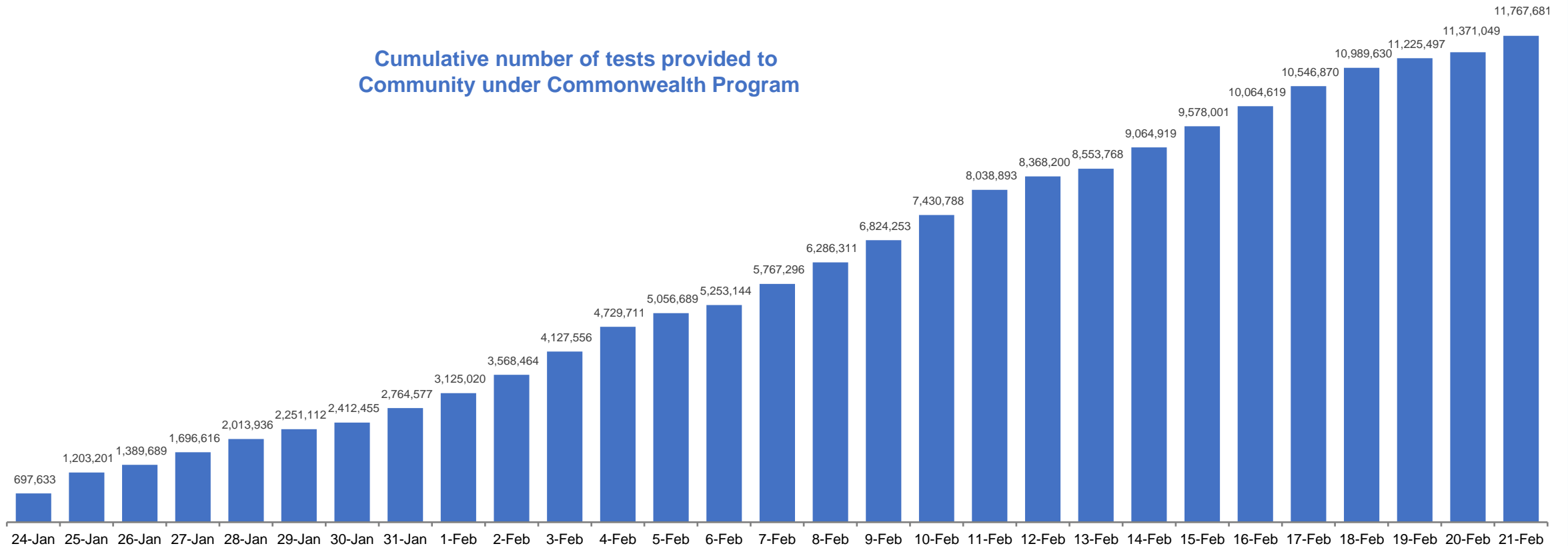
Source: OWID  
Data downloaded: 22 Feb 2022 08:14  
Latest data: 20 Feb 2022

Data as at  
21 Feb 2022

## Concessional rapid antigen test program

**5,448 pharmacies** have delivered over **11.7 million rapid antigen tests** to more than **2.5m eligible concession card holders** under the Government's concessional rapid antigen test program.

Cumulative number of tests provided to  
Community under Commonwealth Program



# Pandemic Response Payments

Australia's COVID-19  
Vaccine Roadmap

Data as at midnight: 20 Feb 2022  
Updated weekly



**2.38 million**

People have received at least one COVID  
Disaster Payment (including ISP200)

**\$13.65 billion**

Paid Out as at 20 Feb 2022

**6.90 million**

Claims granted across  
three different payments



**92%**

of Claims  
Received Digitally



**COVID Disaster Payment:**

5.89 million claims received - 2.19 million individuals paid a total of \$12.59 billion.

**\$200 Income Support Payment:**

353,000 claims received - 183,000 individuals paid a total of \$268.9 million.

**Pandemic Leave Disaster Payment:**

1,069,000 claims received - 719,000 individuals paid a total of \$791.1 million.



**THREE  
PAYMENTS  
AVAILABLE**

## COVID Disaster Payment

assisting during a  
lockdown event in a  
Commonwealth hotspot.

## Income Support Payment \$200

for income support  
recipients who lost at  
least 8 hours of work.

## Pandemic Leave Disaster Payment

for those who have to  
self-isolate, quarantine  
or care.

For more information visit:  
[servicesaustralia.gov.au](https://servicesaustralia.gov.au)

## COVID-19 DISASTER PAYMENTS

### Northern Territory

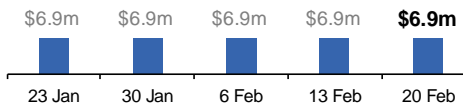
Lockdown (#3) from 16 Nov to 22 Nov  
Claiming period ended 27 Dec

**7,500 people have received at least  
one COVID Disaster Payment.**

**\$6.9m paid out as at 20 Feb 2022.**

**\$0 paid in initial payments in the week  
ending 20 Feb 2022.**

Cumulative payments made by Territory since  
activation on 25 Aug 2021.



### Victoria

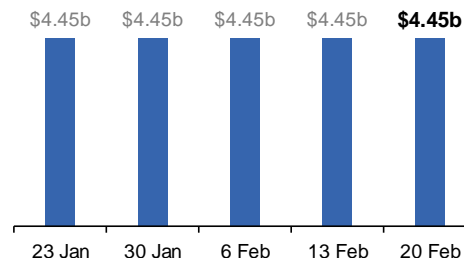
Lockdown (#6) from 6 Aug to 28 Oct  
Claiming period ended 9 Dec

**745,000 people have received at least  
one COVID Disaster Payment.**

**\$4.45b paid out as at 20 Feb 2022.**

**\$10,000 paid in initial and reoccurring  
payments in the week ending  
20 Feb 2022.**

Cumulative payments made by State since  
activation on 8 Jun 2021.



### New South Wales

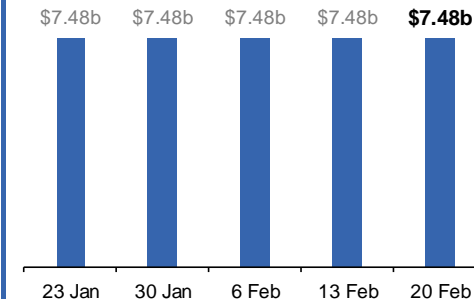
Lockdown from 24 Jun to 10 Oct  
Claiming period ended 27 Nov

**1.08m people have received at least  
one COVID Disaster Payment.**

**\$7.48b paid out as at 20 Feb 2022.**

**\$11,000 paid in initial and reoccurring  
payments in the week ending  
20 Feb 2022.**

Cumulative payments made by State since  
activation on 1 Jul 2021.



### Australian Capital Territory

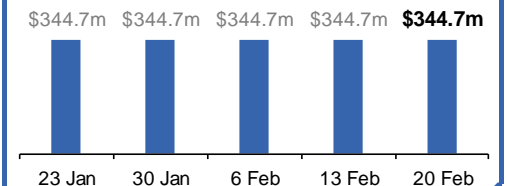
Lockdown from 12 Aug to 14 Oct  
Claiming period ended 25 Nov

**65,000 people have received at least  
one COVID Disaster Payment.**

**\$344.7m paid out as at 20 Feb 2022.**

**\$1,000 paid in initial and reoccurring  
payments in the week ending  
20 Feb 2022.**

Cumulative payments made by Territory since  
activation on 20 Aug 2021.



# Pandemic Response Payments (continued)

Data as at midnight: 20 Feb 2022  
Updated weekly

## COVID-19 DISASTER PAYMENTS

