



**Australian Government**  
**Operation COVID Shield**

# COVID-19 Vaccine Roll-out

21 February 2022

Data as at:  
20 Feb 2022

# Total vaccine doses



**53,297,217** total vaccine doses administered nationally as at 20 February

**+41,619** recorded in the last 24 hours



**19,811,149**

people have had at least one dose

**>95%**

of people over the age of 16 have had at least one dose



**19,432,658**

people are fully vaccinated

**94.2%**

of people over the age of 16 are fully vaccinated



**10,821,136**

people over the age of 16 who have received more than two doses

**NSW**  
**16,710,693**  
(+7,324 daily increase)

**VIC**  
**14,100,573**  
(+14,306 daily increase)

**QLD**  
**10,169,506**  
(+5,069 daily increase)

**WA**  
**5,621,683**  
(+9,735 daily increase)

**TAS**  
**1,179,529**  
(+139 daily increase)

**SA**  
**3,656,142**  
(+2,998 daily increase)

**ACT**  
**1,343,751**  
(+1,632 daily increase)

**NT**  
**515,340**  
(+416 daily increase)

\*Administration state breakdown indicates state in which a vaccine was administered  
\*\*Overall dose count includes instances of more than two doses per person in a small number of cases.

Source: Australian Immunisation Register

# Booster Vaccinations

Data as at:  
20 Feb 2022



**10,821,136** total people over the age of 16 years old  
who have received more than two doses nationally

**+34,419** people who have received more than two doses  
nationally in the last 24 hours

**NSW**  
**3,394,672**  
(6,243 daily  
increase)

**VIC**  
**2,950,920**  
(12,435 daily  
increase)

**QLD**  
**1,900,410**  
(3,993 daily  
increase)

**WA**  
**1,185,882**  
(7,181 daily  
increase)

**TAS**  
**235,243**  
(164 daily  
increase)

**SA**  
**765,528**  
(2,346 daily  
increase)

**ACT**  
**227,648**  
(856 daily  
increase)

**NT**  
**85,958**  
(321 daily  
increase)

**74,875**

doses administered to persons  
residing in other territories or with  
missing residential information

Source: Australian Immunisation Register

Data as at:  
20 Feb 2022

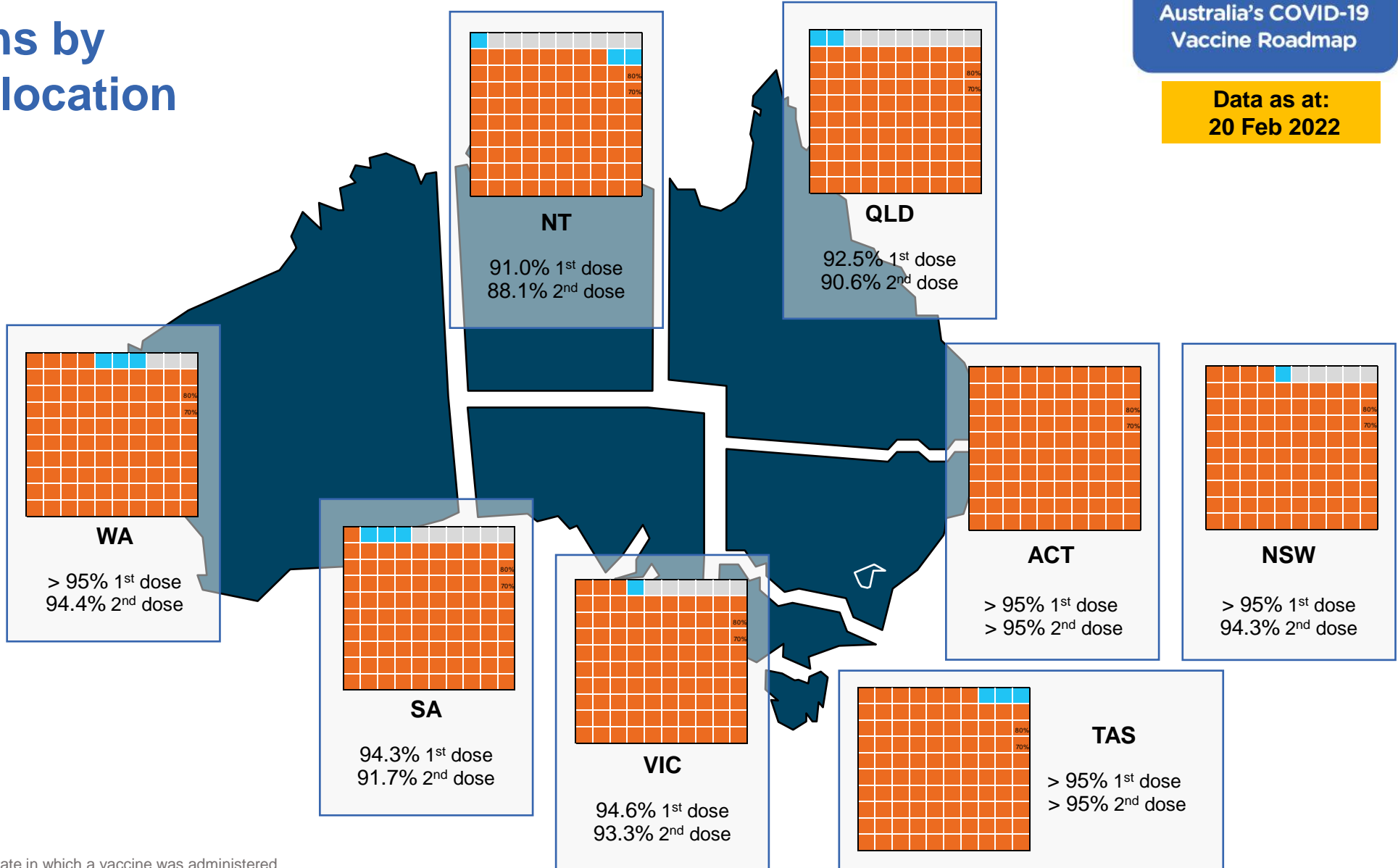
# Vaccinations by residential location

## First doses

Age	Today	4 weeks ago	8 weeks ago
16+	>95%	>95%	94.6%
50+	>95%	>95%	>95%
70+	>95%	>95%	>95%

## Fully vaccinated

Age	Today	4 weeks ago	8 weeks ago
16+	94.2%	93.2%	91.6%
50+	>95%	>95%	>95%
70+	>95%	>95%	>95%



\*Residential state may differ from the state in which a vaccine was administered

# Commonwealth and Jurisdiction vaccine doses administered

Data as at:  
20 Feb 2022



**53,297,217** total vaccine doses administered nationally as at 20 February

**+ 41,619** recorded in the last 24 hours

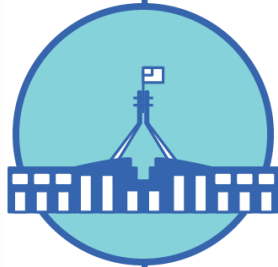


**19,952,323**

doses administered by state and territory facilities

**+ 20,433**

recorded in the last 24 hours



**33,344,894**

doses administered by commonwealth facilities

**+ 21,186**

recorded in the last 24 hours

**32,093,911** total vaccine doses administered in primary care settings

**1,250,983** total vaccine doses administered in aged care and disability settings

NSW	Jurisdictions	Commonwealth
Cumulative	4,932,660	11,778,033
Daily increase	2,580	4,744

VIC	Jurisdictions	Commonwealth
Cumulative	5,784,906	8,315,667
Daily increase	6,742	7,564

QLD	Jurisdictions	Commonwealth
Cumulative	3,687,033	6,482,473
Daily increase	2,261	2,808

WA	Jurisdictions	Commonwealth
Cumulative	2,301,774	3,319,909
Daily increase	5,103	4,632

TAS	Jurisdictions	Commonwealth
Cumulative	578,512	601,017
Daily increase	2	137

SA	Jurisdictions	Commonwealth
Cumulative	1,681,358	1,974,784
Daily increase	2,135	863

ACT	Jurisdictions	Commonwealth
Cumulative	684,168	659,583
Daily increase	1,236	396

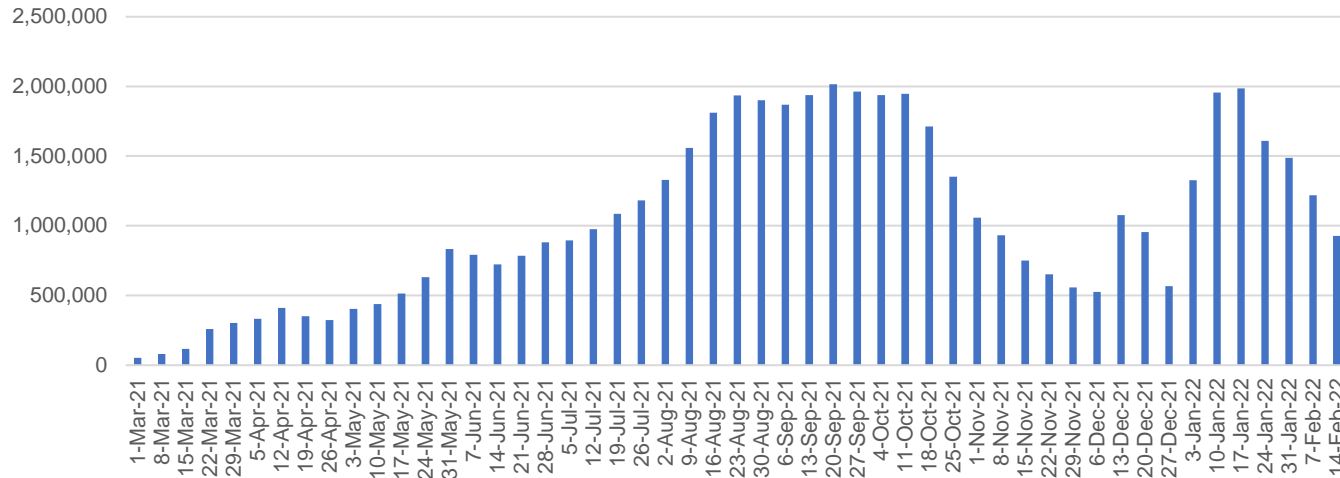
NT	Jurisdictions	Commonwealth
Cumulative	301,912	213,428
Daily increase	374	42

# Vaccine milestone charts

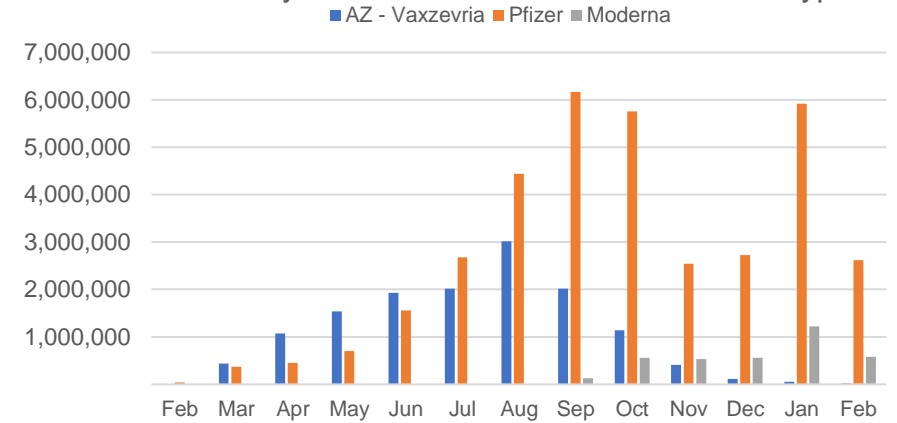
Data as at:  
20 Feb 2022

Australia's COVID-19  
Vaccine Roadmap

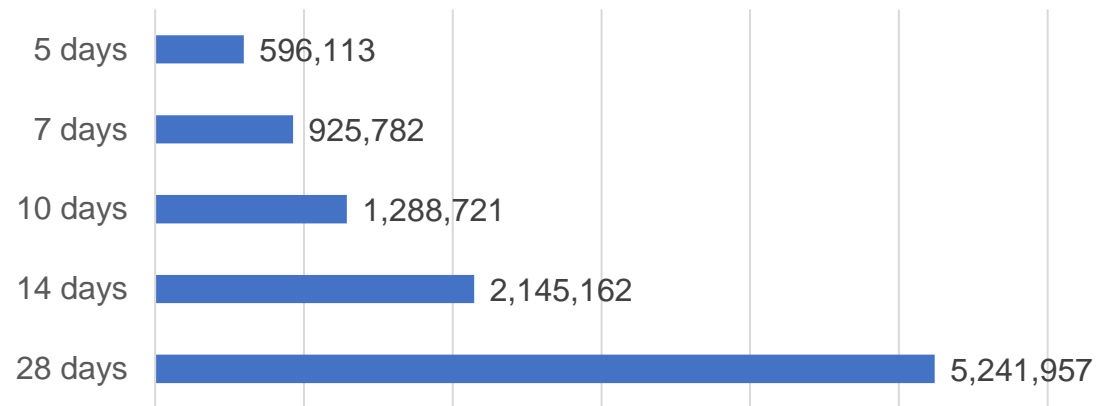
Doses Administered by Week



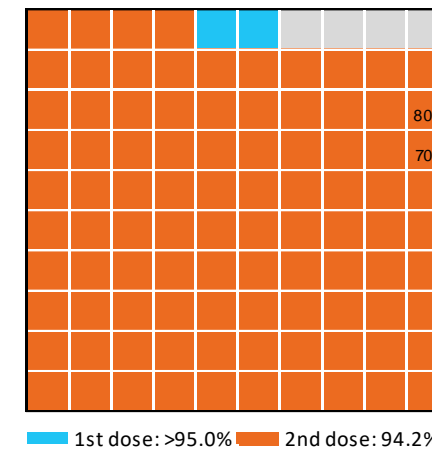
Doses by administration month and vaccine type



Doses Reported



Eligible population percentage coverage



\*Each square represents 1% of the national population. Squares are filled as milestones are achieved.

\*Sourced from the Australian Immunisation Register.

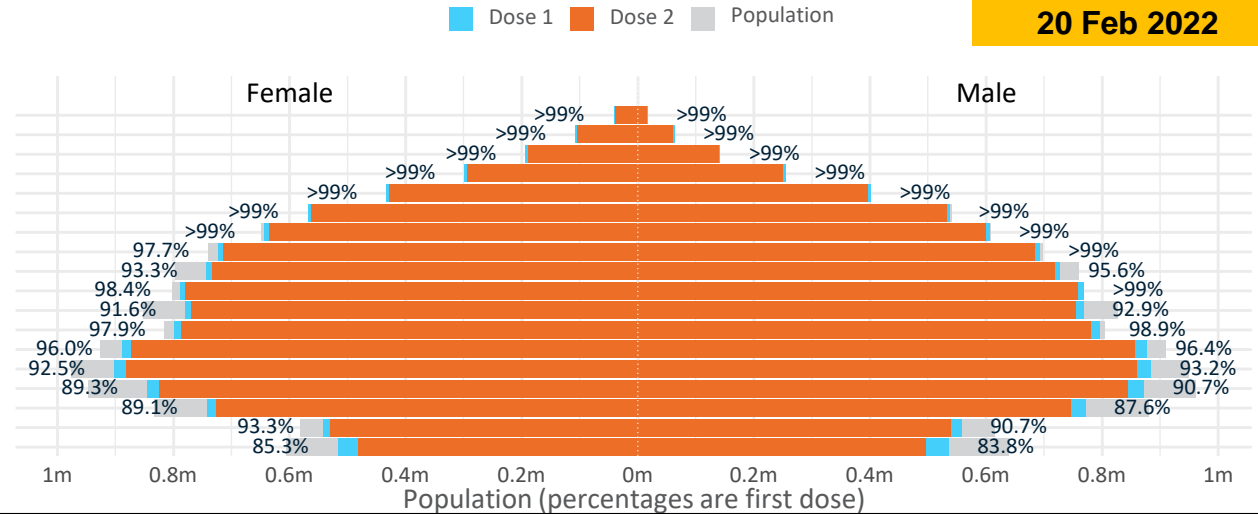
# Doses by age and sex

First and second doses by age and sex

	16+	50+	12-15	5-11
Dose 1	96.08% (19,811,149 doses / 20,619,959 people)	>99% (8,755,407 doses / 8,749,703 people)	84.56% (1,051,953 doses / 1,243,990 people)	49.07% (1,117,193 doses / 2,276,638 people)
Dose 2	94.24% (19,432,658 doses / 20,619,959 people)	98.69% (8,635,117 doses / 8,749,703 people)	78.54% (977,000 doses / 1,243,990 people)	0.60% (13,703 doses / 2,276,638 people)

Data as at: 20 Feb 2022

Age	Dose 1	Dose 2
95+	58,030 (>99%)	54,493 (>99%)
90-94	171,277 (>99%)	164,998 (>99%)
85-89	335,583 (>99%)	327,472 (>99%)
80-84	553,302 (>99%)	544,575 (>99%)
75-79	834,693 (>99%)	824,933 (>99%)
70-74	1,106,475 (>99%)	1,094,086 (>99%)
65-69	1,251,405 (>99%)	1,235,972 (98.2%)
60-64	1,416,233 (98.6%)	1,398,494 (97.3%)
55-59	1,470,230 (94.5%)	1,451,805 (93.3%)
50-54	1,558,179 (>99%)	1,538,289 (98.3%)
45-49	1,548,448 (92.4%)	1,526,161 (91.0%)
40-44	1,596,705 (98.5%)	1,568,563 (96.8%)
35-39	1,769,880 (96.5%)	1,733,005 (94.4%)
30-34	1,793,654 (93.2%)	1,747,187 (90.8%)
25-29	1,727,340 (90.6%)	1,676,309 (87.9%)
20-24	1,519,295 (88.7%)	1,476,250 (86.2%)
16-19	1,100,420 (92.0%)	1,070,066 (89.5%)
12-15	1,051,953 (84.6%)	977,000 (78.5%)



	AUS	ACT	NSW	NT	QLD	SA	TAS	VIC	WA
16 and over - dose 1	19,811,149	350,204	6,282,510	173,474	3,805,870	1,357,967	440,132	5,117,205	2,054,983
16 and over - dose 2	19,432,658	345,019	6,189,482	167,891	3,726,626	1,321,462	429,084	5,044,533	1,997,573
16 and over - population	20,619,959*	344,037	6,565,651	190,571	4,112,707	1,440,400	440,172	5,407,574	2,114,978
16 and over % with dose 1	96.08%	>99%	95.69%	91.03%	92.54%	94.28%	>99%	94.63%	97.16%
16 and over % with dose 2	94.24%	>99%	94.27%	88.10%	90.61%	91.74%	97.48%	93.29%	94.45%
5 to 11 - dose 1	1,117,193	30,666	334,756	12,345	201,601	80,264	27,440	309,614	113,637
5 to 11 - dose 2	13,703	203	5,688	94	2,255	361	56	4,433	529
5 to 11 - population	2,276,638	39,789	716,460	24,750	478,731	148,816	45,033	578,499	244,154
5 to 11 % with dose 1	49.07%	77.07%	46.72%	49.88%	42.11%	53.94%	60.93%	53.52%	46.54%
5 to 11 % with dose 2	0.60%	0.51%	0.79%	0.38%	0.47%	0.24%	0.12%	0.77%	0.22%
12 to 15 - dose 1	1,051,953	20,084	326,202	10,880	207,595	68,065	22,808	276,027	110,937
12 to 15 - dose 2	977,000	19,187	308,374	9,596	190,086	62,773	20,956	261,483	96,573
12 to 15 - population	1,243,990	19,693	390,330	13,060	270,146	82,747	26,308	308,611	132,869
12 to 15 % with dose 1	84.56%	>99%	83.57%	83.31%	76.85%	82.26%	86.70%	89.44%	83.49%
12 to 15 % with dose 2	78.54%	97.43%	79.00%	73.48%	70.36%	75.86%	79.66%	84.73%	72.68%

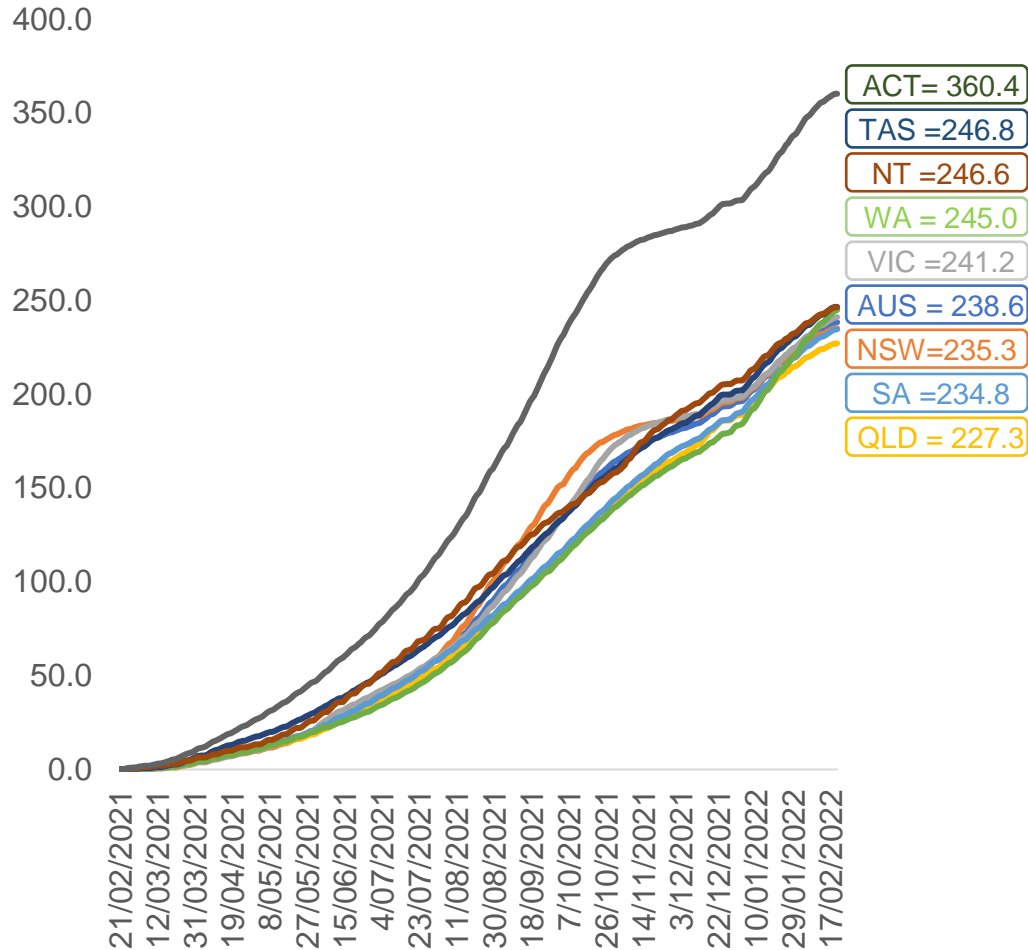
\*National population will not equal sum of listed jurisdictions due to a small number of people counted in national population residing in some 'other' territories. Sum of state doses will not add to national total as some records are unable to be geocoded to a State or Territory. Doses sourced from Australian Immunisation Register, population from ABS ERP June 2020

# Vaccinations by location

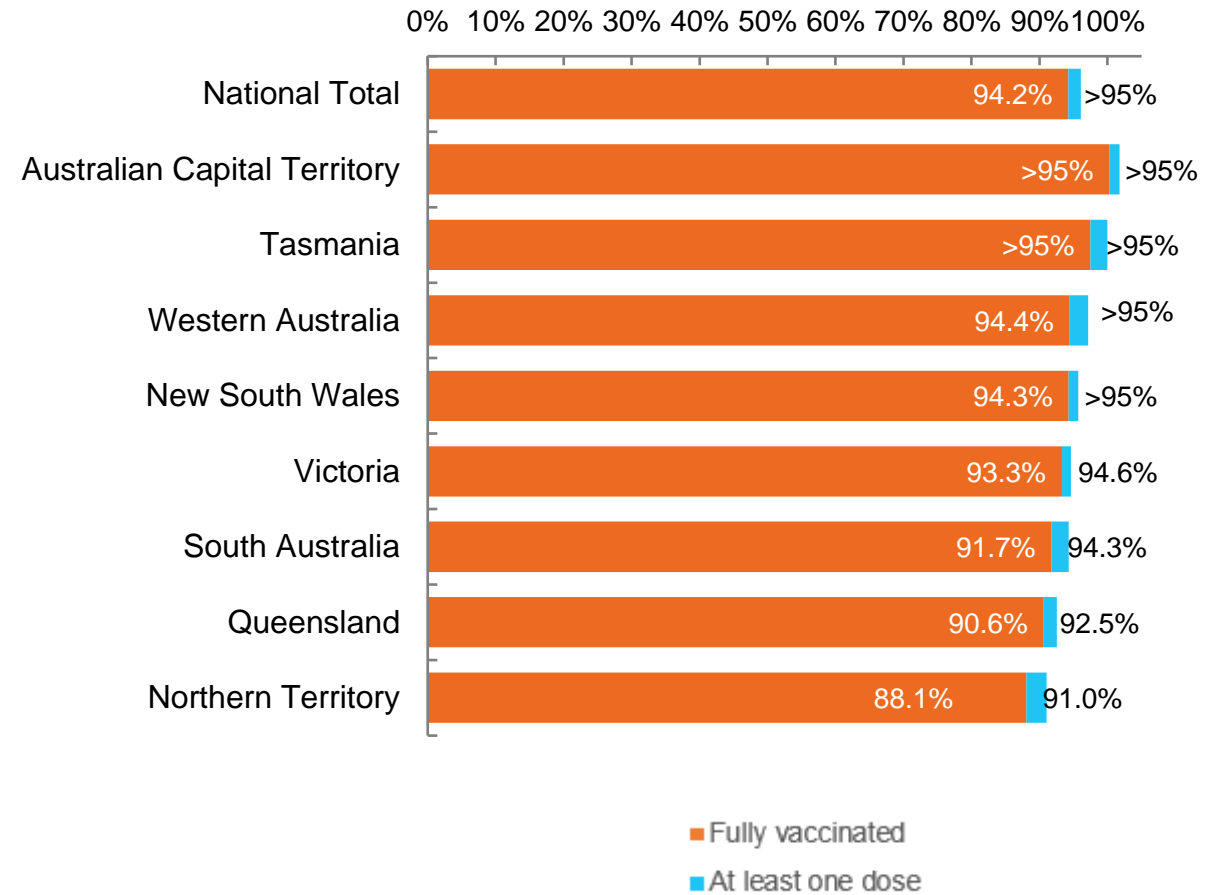
Data as at:  
20 Feb 2022

Australia's COVID-19  
Vaccine Roadmap

Cumulative total doses administered vs eligible state populations\*



First and Second Doses by residential location



\*Not an indication of percentage vaccinated, numbers will exceed 100 due to multiple doses required per person of the population. All doses are included for those aged 12 and above, and are based on vaccination provider location.



# Aboriginal and Torres Strait Islander peoples

## Number of people vaccinated

Data as at:  
15 Feb 2022  
Updated weekly

Australia's COVID-19  
Vaccine Roadmap



**429,831**

people over the age of 16  
have had at least one dose

**82.7%**

of people over the age of 16  
have had at least one dose



**402,335**

people over the age of 16  
are fully vaccinated

**77.4%**

of people over the age of 16 are  
fully vaccinated



**47,215  
(66.6%)**

people aged 12-15 years  
have had at least one dose

### 175 Aboriginal community controlled health services (ACCHS)

0#	50	27	43	12	3	21	19
<b>ACT</b>	<b>NSW</b>	<b>NT</b>	<b>QLD</b>	<b>SA</b>	<b>TAS</b>	<b>VIC</b>	<b>WA</b>

Medicare Address State <sup>##</sup>	Individuals Dose 1	Individuals Dose 1 %	Individuals Dose 2	Individuals Dose 2 %
Australian Capital Territory	4,870	91.3%	4,731	88.7%
New South Wales	134,909	86.5%	131,405	84.2%
Northern Territory	41,631	88.2%	38,436	81.4%
Queensland	113,396	80.0%	105,656	74.5%
South Australia	19,495	78.1%	17,637	70.7%
Tasmania	14,144	87.8%	13,533	84.0%
Victoria	35,147	89.1%	34,208	86.8%
Western Australia	49,922	79.3%	42,743	67.9%
Unknown/Other Territories	16,317	62.8%	13,986	53.9%
<b>Totals</b>	<b>429,831</b>	<b>82.7%</b>	<b>402,335</b>	<b>77.4%</b>

Source: Australian Immunisation Register

\*Identifying as Aboriginal and Torres Strait Islander is optional and the estimated population may be under reported.

\*\*Includes all Aboriginal and Torres Strait Islander peoples who have received a vaccination, not limited to those administered in an ACCHS setting

#ACCHS in the ACT are currently operating as a Commonwealth Vaccine Clinics so not included to avoid double counting

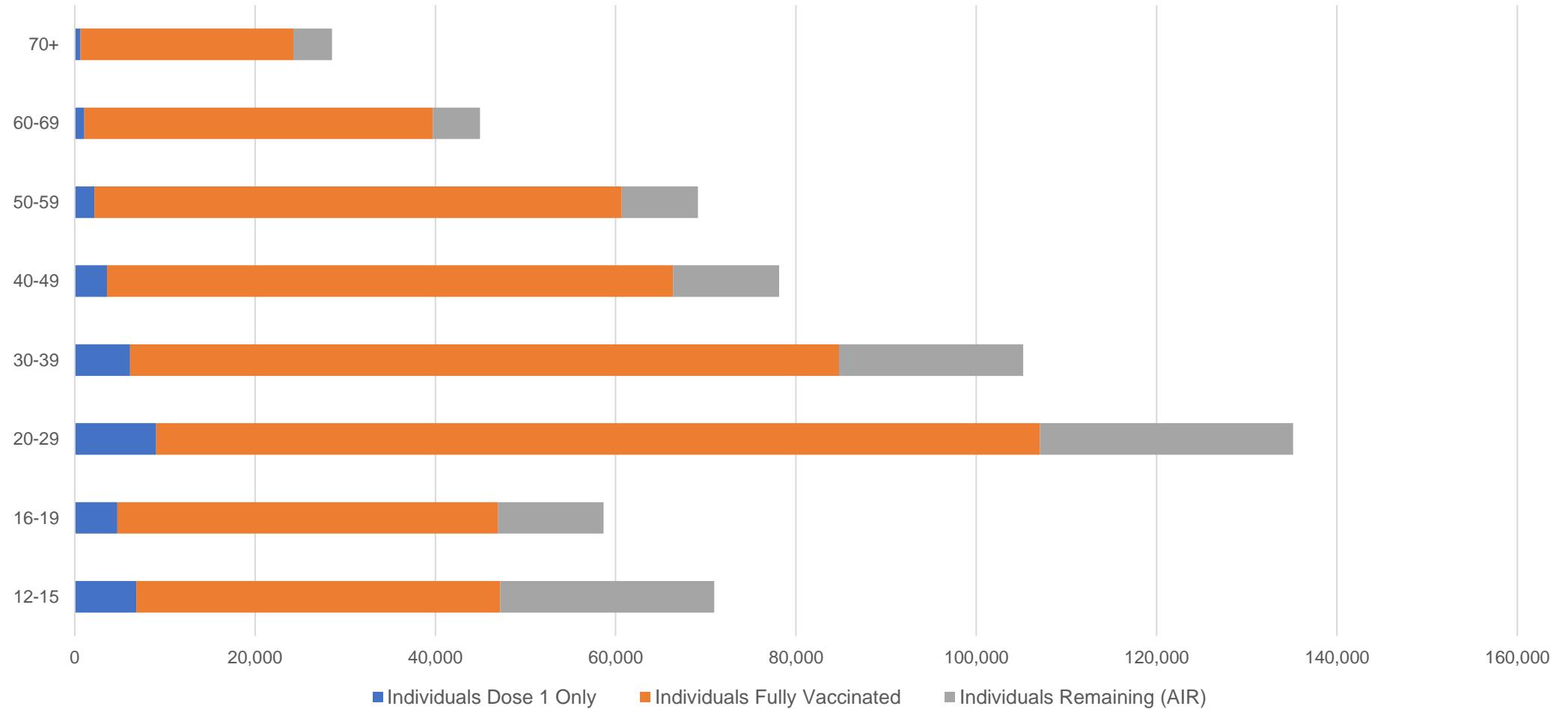
##The above table includes all identified Aboriginal and Torres Strait Islander people who are aged 16 and above by their state of residence.

# Aboriginal and Torres Strait Islander peoples

## Number of people vaccinated by age

Data as at:  
15 Feb 2022  
Updated weekly

Australia's COVID-19  
Vaccine Roadmap



Source: Australian Immunisation Register

# Commonwealth primary care

Data as at:  
20 Feb 2022

Australia's COVID-19  
Vaccine Roadmap



## Primary care vaccine administration sites

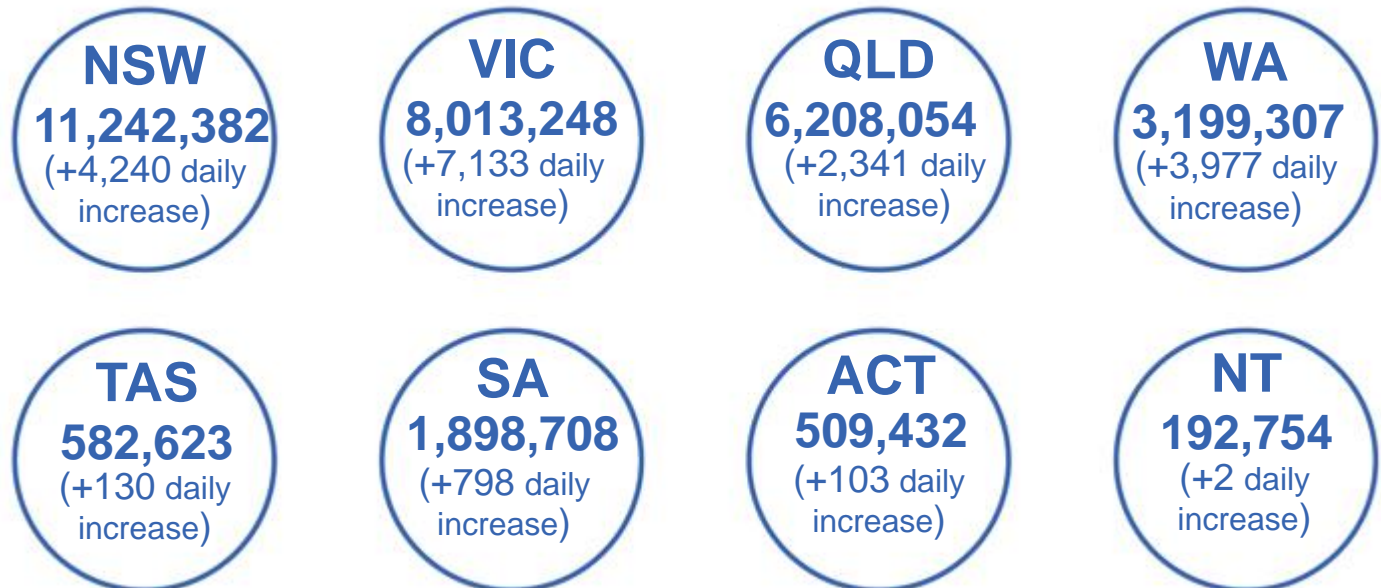
<b>5,769</b>	<b>128</b>	<b>176</b>	<b>3,545</b>
GPs	CVCs	ACCHS	Pharmacies



**32,093,911** total vaccine doses administered  
primary care settings as at 20 February  
**+ 20,748** recorded in the last 24 hours

## Primary care vaccinations by provider type

	Doses administered	Daily increase	7 day increase
<b>General Practice*</b> includes other Commonwealth	26,341,336	13,415	461,357
<b>Pharmacy</b>	5,752,575	7,333	243,234



**247,403**

doses administered to persons  
residing in other territories or with  
missing residential information

\*General practice includes Commonwealth Vaccination Clinics, Aboriginal Community Health Centres, Royal Flying Doctor Service and other Commonwealth vaccination facilities

Source: Australian Immunisation Register

Data as at:  
20 Feb 2022

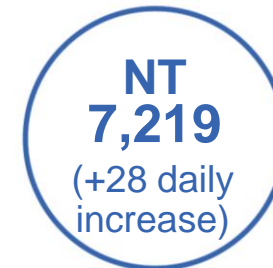
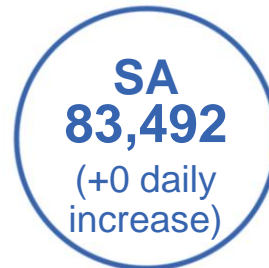
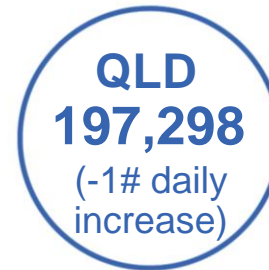
# Commonwealth aged care and disability doses administered



**1,250,983** (+ 438 last 24 hours)

Total vaccine doses administered in aged care and disability facilities as at 20 February

Number of doses administered as part of the Commonwealth aged and disability care rollout



**31,488**

doses administered to persons residing in other territories or with missing residential information

Source: Australian Immunisation Register

\*Sourced from the Australian Immunisation Register. Includes all persons vaccinated at participating residential aged care, disability and related industry settings.

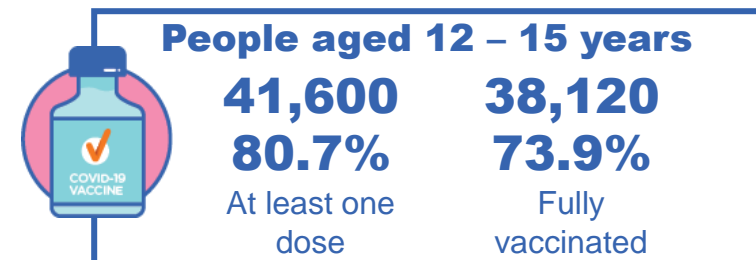
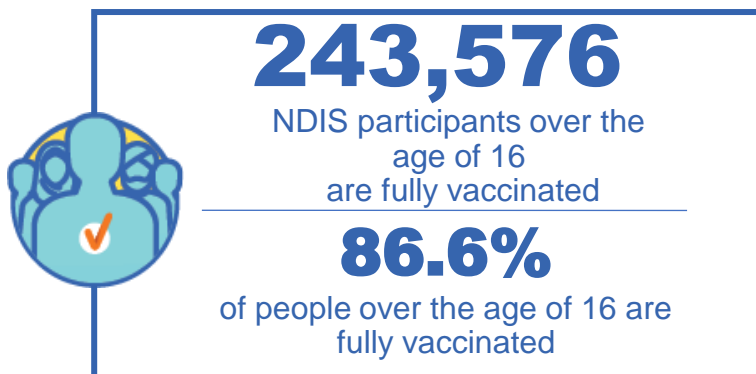
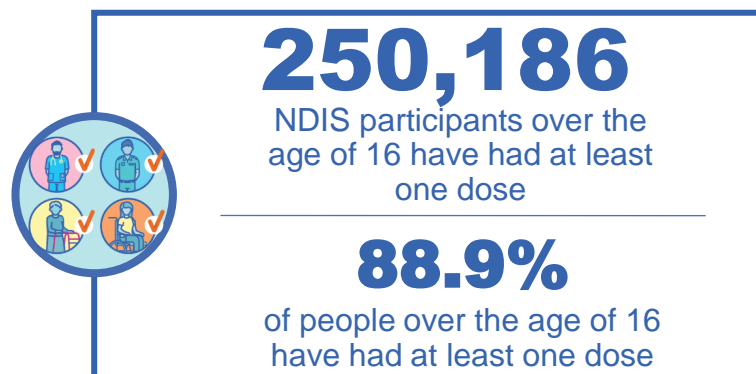
\*\*State level breakdown indicates the residential location and may not align to the state in which the vaccination occurred.

# Numbers are calculated as difference in daily cumulative reported numbers to allow for historical corrections in all data sources. This can occasionally result in negative numbers, such as for TAS, VIC and QLD, where historical details about doses have been updated.

# National Disability Insurance Scheme (NDIS) reported vaccinations

Data as at:  
17 February 2022  
Updated weekly

Australia's COVID-19  
Vaccine Roadmap



## NDIS participant vaccinations

	People aged 16+ with at least one dose	People aged 16+ fully vaccinated	% People aged 16+ with at least one dose	% People aged 16+ fully vaccinated
ACT	4,785	4,714	<b>91.0%</b>	<b>89.7%</b>
NSW	77,542	76,177	<b>89.4%</b>	<b>87.8%</b>
NT	2,171	2,062	<b>80.3%</b>	<b>76.2%</b>
QLD	48,996	47,592	<b>88.1%</b>	<b>85.6%</b>
SA	20,307	19,544	<b>86.6%</b>	<b>83.3%</b>
TAS	6,252	6,023	<b>88.8%</b>	<b>85.6%</b>
VIC	66,808	65,484	<b>90.1%</b>	<b>88.3%</b>
WA	23,325	21,980	<b>88.8%</b>	<b>83.6%</b>
<b>National</b>	<b>250,186</b>	<b>243,576</b>	<b>88.9%</b>	<b>86.6%</b>

Source: Linkage between National Disability Insurance Agency data and the Australian Immunisation Register. Total NDIS participant numbers as at 17th October. Australian Immunisation Register data as at 16 February. Includes all participants regardless of residence type.

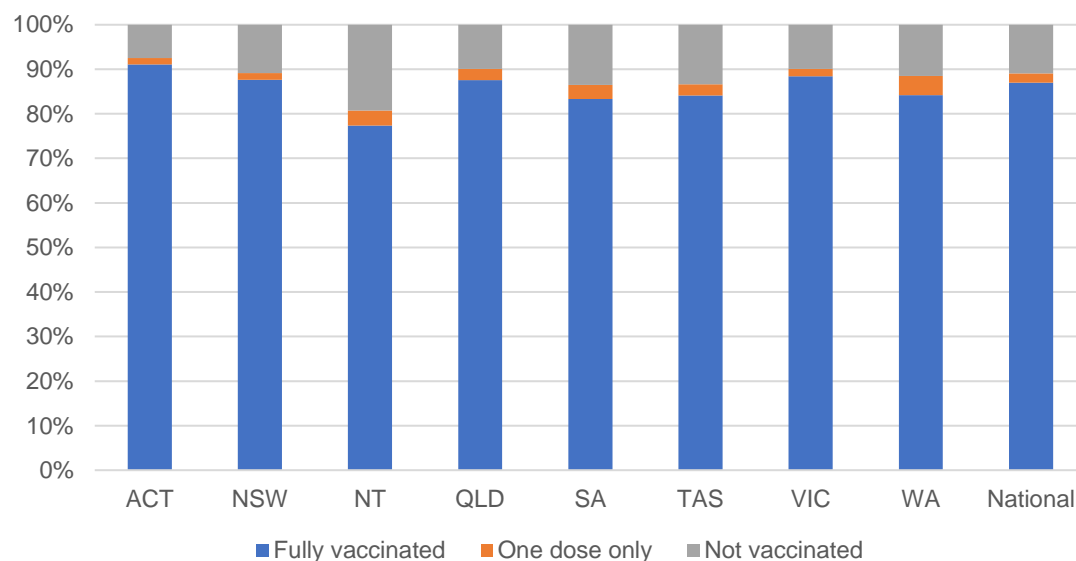
# National Disability Insurance Scheme (NDIS) reported vaccinations

Data as at:  
17 February 2022  
Updated Weekly

Australia's COVID-19  
Vaccine Roadmap

NATIONAL	Total people with at least one dose	People fully vaccinated	Total number of individuals in cohort	% People with at least one dose	% People fully vaccinated
NDIS participants living in disability accommodation	20,386	19,920	22,800	89.4%	87.4%

## NDIS participants in disability and aged care accommodation



Source: Linkage between National Disability Insurance Agency data and the Australian Immunisation Register. Includes participants residing in disability accommodation only.  
Source: Total NDIS participant numbers as at 17th October. Participant data as at 15 February. Australian Immunisation Register data as at 16 February. Worker data as at 17 February.

## NDIS workforce vaccinations

	NDIS workers with at least one dose	NDIS workers fully vaccinated	% NDIS workers with at least one dose	% NDIS workers fully vaccinated
NSW	120,986	120,467	97.8%	97.3%
VIC	107,032	106,261	98.0%	97.3%
QLD	66,840	66,049	96.7%	95.5%
WA	31,941	30,735	97.6%	94.0%
SA	34,443	33,560	98.2%	95.7%
TAS	10,612	10,470	99.5%	98.2%
ACT	3,474	3,465	99.5%	99.3%
NT	3,244	3,201	99.4%	98.1%
<b>TOTAL</b>	<b>378,572</b>	<b>374,208</b>	<b>97.7%</b>	<b>96.6%</b>

Source: the NDIS Commission has established a requirement for registered NDIS providers who provide intensive disability support services to report on the vaccination status of workers they employ, or otherwise engage, to deliver NDIS-funded supports and services, and who are required to be vaccinated in accordance with in-force state and territory public health orders. The statistics reflect data reported to the NDIS Commission by registered NDIS providers and should be considered indicative and subject to change

Note: Some registered NDIS providers are yet to report on the vaccination status of their workforce. The NDIS Commission is working with those providers around reporting requirements.

Remaining workers not included include those exempt from vaccination requirements, workers whose vaccination status is not yet verified by the provider (such as workers on leave) and provider reporting anomalies.

Data as at: 20 Feb 2022

# Residential aged care vaccination rollout

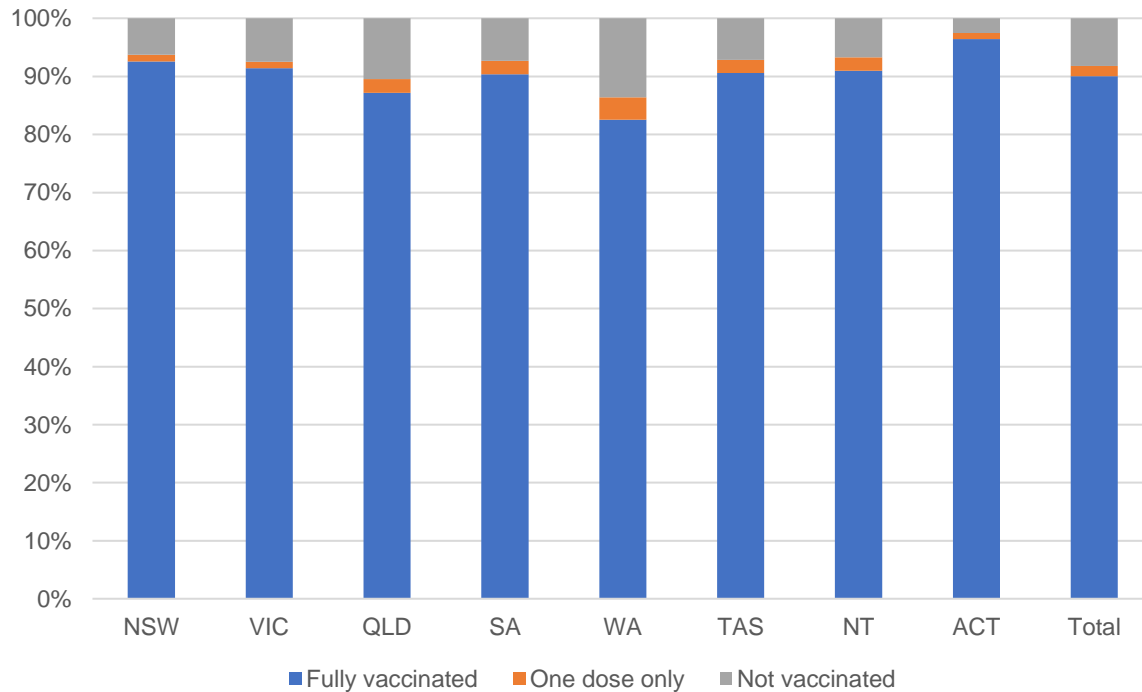
Residential aged care facilities status

**100%** Commonwealth facilities visited (2,541 planned sites)

**172,099** People fully vaccinated

**175,451** People with at least one dose

## Aged care resident vaccinations



## Aged care worker vaccinations

Jurisdictions	Total workers with at least one dose	Workers fully vaccinated	% Workers with at least one dose	% Workers fully vaccinated
NSW	78,861	78,834	99.3%	99.2%
VIC	68,801	68,800	98.4%	98.4%
QLD	48,666	48,622	98.5%	98.4%
SA	27,108	27,080	98.9%	98.8%
WA	23,827	23,824	99.4%	99.4%
TAS	7,645	7,645	100.0%	100.0%
NT	875	875	100.0%	100.0%
ACT	3,027	3,027	100.0%	100.0%
<b>Total</b>	<b>258,810</b>	<b>258,707</b>	<b>98.9%</b>	<b>98.8%</b>

Source: My Aged Care Portal vaccination progress

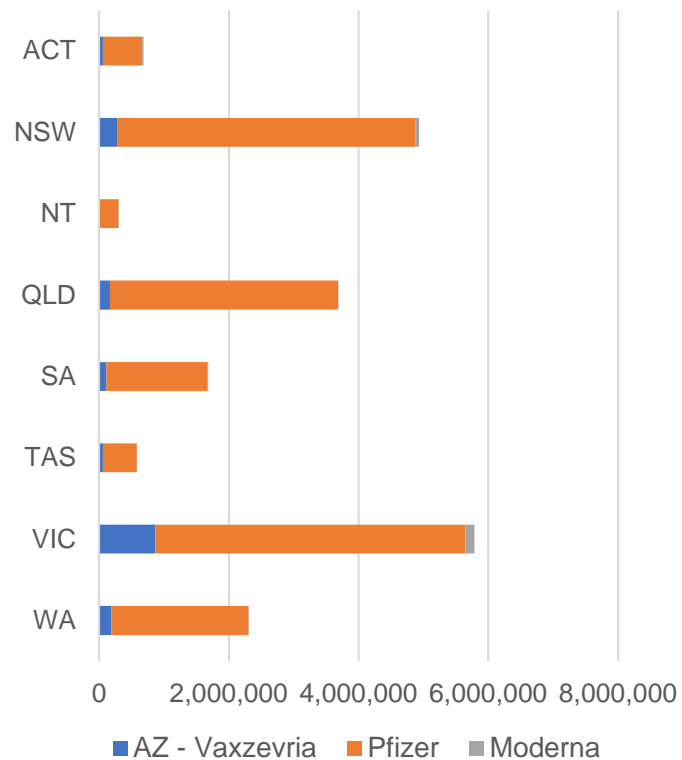
\*Status updates are provided by facilities at least once per week. Reporting is updated Monday to Friday to encompass different facility updates being made on different days.

Data is sourced directly from Aged Care Service Providers and is not drawn or closely aligned with data from AIR due to inconsistencies and potential lags in uploading of records.

Data as at:  
20 Feb 2022

## Jurisdiction administered

Total vaccine doses administered in State and Territory clinics as at 20 February



**19,952,323** total vaccine doses administered in State and Territory clinics as at 20 February  
 + **20,433** recorded in the last 24 hours  
 + **215,042** recorded in the last 7 days

**NSW**  
**4,932,660**  
 (+2,580 daily increase)

**VIC**  
**5,784,906**  
 (+6,742 daily increase)

**QLD**  
**3,687,033**  
 (+2,261 daily increase)

**WA**  
**2,301,774**  
 (+5,103 daily increase)

**TAS**  
**578,512**  
 (+2 daily increase)

**SA**  
**1,681,358**  
 (+2,135 daily increase)

**ACT**  
**684,168**  
 (+1,236 daily increase)

**NT**  
**301,912**  
 (+374 daily increase)

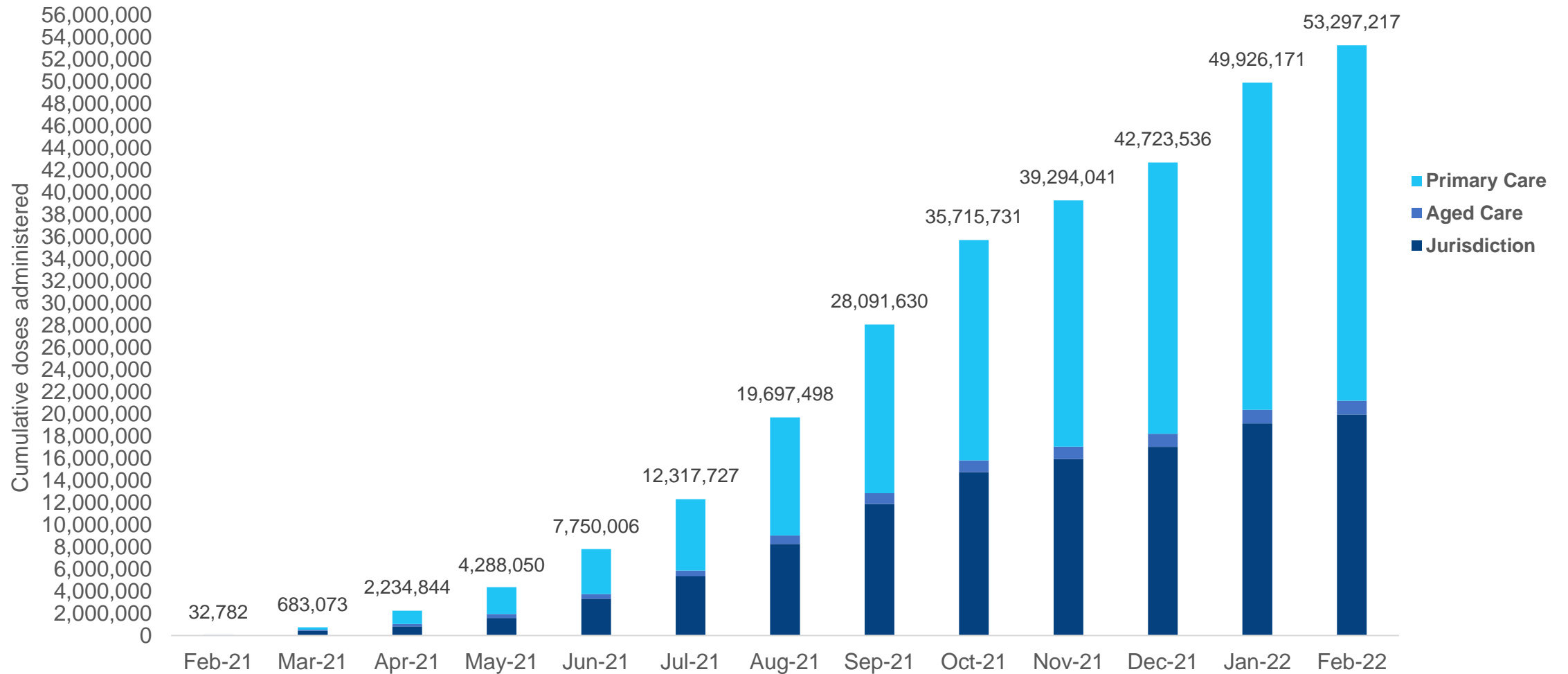
\*Sourced from the Australian Immunisation Register. Numbers are calculated as difference in daily cumulative reported numbers to allow for historical corrections.

Source: Australian Immunisation Register



Data as at:  
20 Feb 2022

# Cumulative doses administered by channel



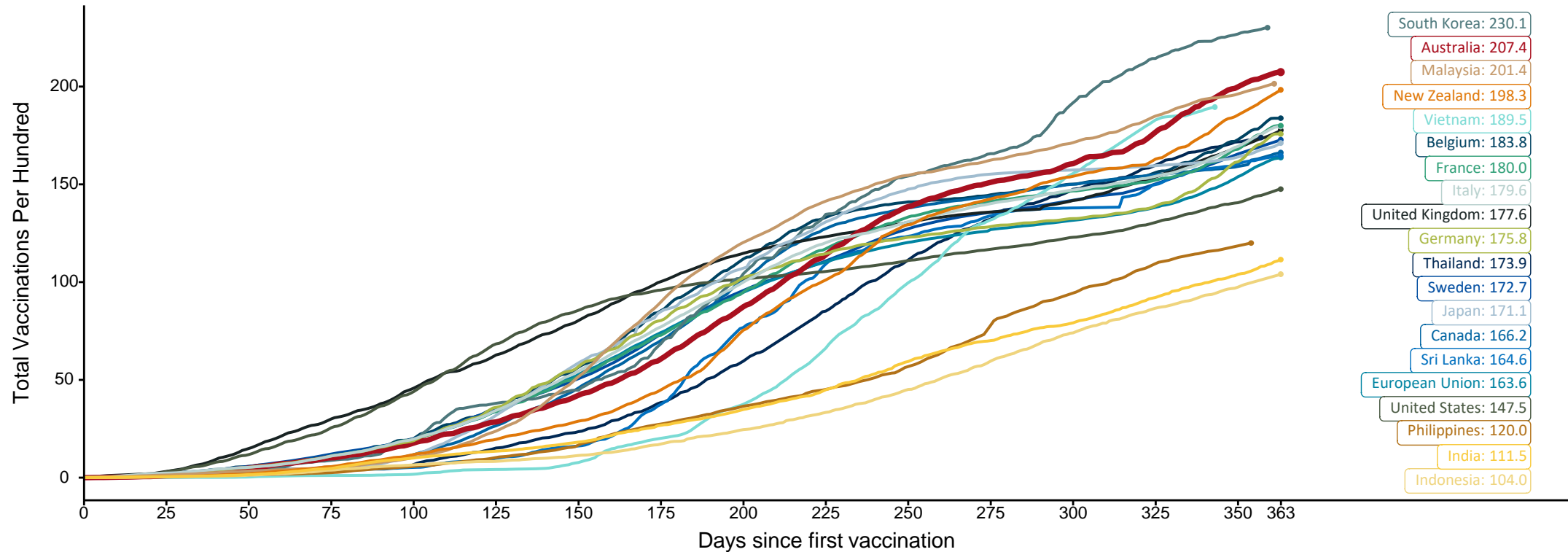
Source: Australian Immunisation Register

# Doses at equivalent stages of rollout (Day 363)

Data as at:  
20 Feb 2022

The x-axis is truncated at the length of Australia's vaccination program. Countries with intermittent reporting have had their doses per 100 imputed to Australia's current stage of rollout. Israel excluded as it is beyond scale of the graph

Cumulative doses administered (20 Feb): **53,297,217**



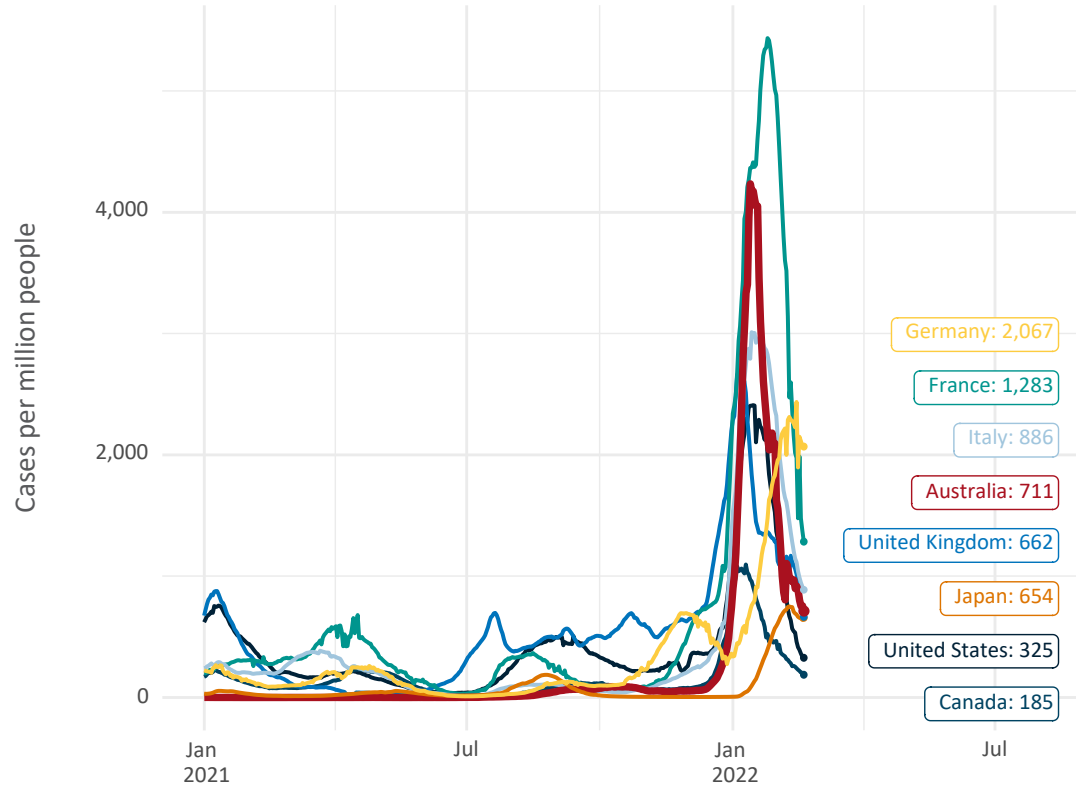
Note: From 15 September 2021, data for Australia includes all doses administered to people 12 and over. Prior to 15 September, data was for 16 and over  
 Due to data revisions, Singapore has been removed from the chart  
 Source: Department of Health (Australia), Our World in Data (international)  
 Latest data: 20 February

# International data – COVID-19

Data as at:  
20 Feb 2022

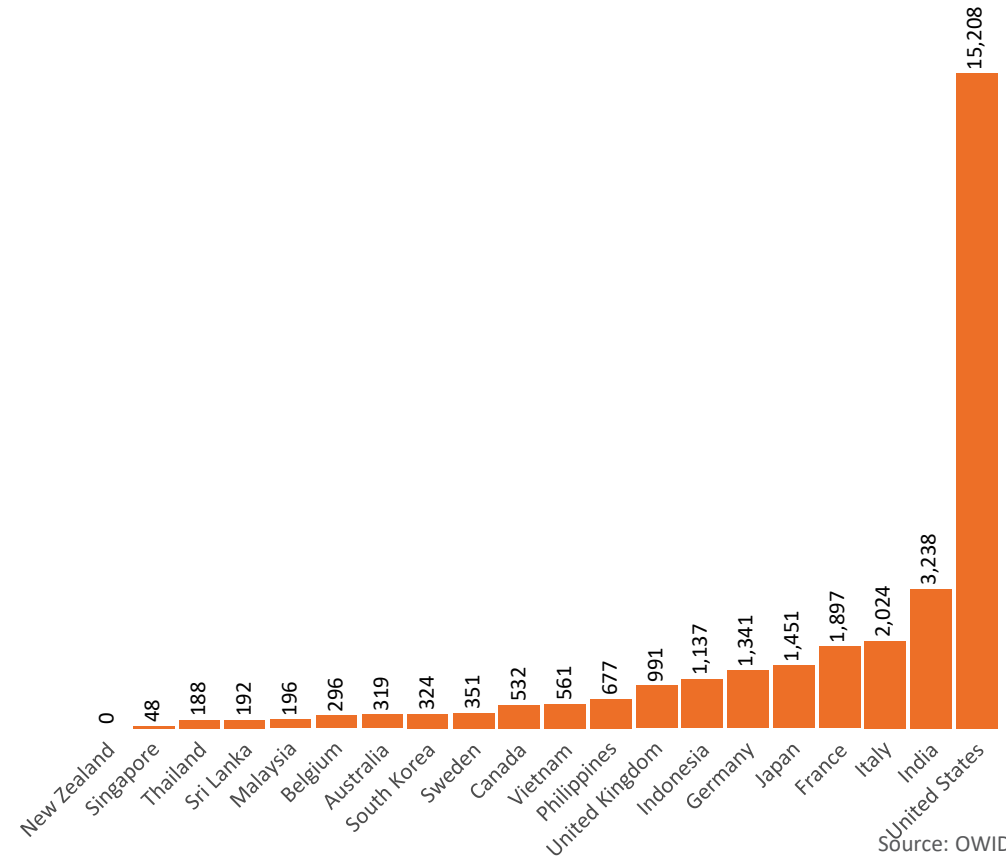
Australia's COVID-19  
Vaccine Roadmap

New daily cases per million in 2021, Australia and G7 countries  
Smoothed - 7 day average



Source: OWID  
Data downloaded: 21 Feb 2022 07:48  
Latest data: 19 Feb 2022

COVID-19 deaths in past 7 days - Australia and select countries



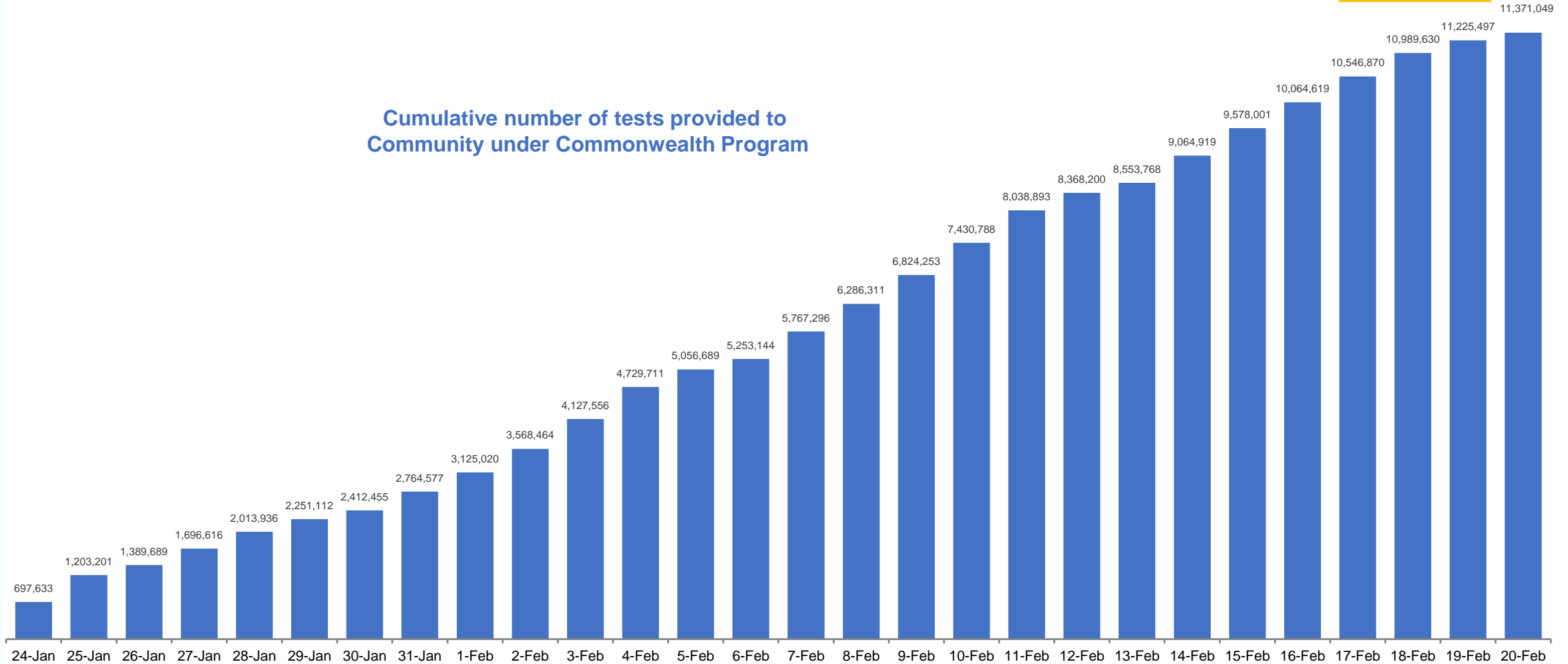
Source: OWID  
Data downloaded: 21 Feb 2022 07:48  
Latest data: 19 Feb 2022

Data as at:  
20 Feb 2022

# Concessional rapid antigen test program


5,422 pharmacies have delivered over 11.3 million rapid antigen tests to 2,463,780 eligible concession card holders under the Government's concessional rapid antigen test program.

Cumulative number of tests provided to  
Community under Commonwealth Program



# Pandemic Response Payments

Data as at midnight: 20 Feb 2022  
Updated weekly



**2.38 million**  
People have received at least one COVID Disaster Payment (including ISP200)

**\$13.65 billion**  
Paid Out as at 20 Feb 2022


**6.90 million**  
Claims granted across three different payments



**92%**  
of Claims Received Digitally



<b>COVID Disaster Payment:</b>	5.89 million claims received - 2.19 million individuals paid a total of \$12.59 billion.
<b>\$200 Income Support Payment:</b>	353,000 claims received - 183,000 individuals paid a total of \$268.9 million.
<b>Pandemic Leave Disaster Payment:</b>	1,069,000 claims received - 719,000 individuals paid a total of \$791.1 million.



**THREE PAYMENTS AVAILABLE**

**COVID Disaster Payment**  
assisting during a lockdown event in a Commonwealth hotspot.

**Income Support Payment \$200**  
for income support recipients who lost at least 8 hours of work.

**Pandemic Leave Disaster Payment**  
for those who have to self-isolate, quarantine or care.

For more information visit:  
[servicesaustralia.gov.au](https://servicesaustralia.gov.au)

## COVID-19 DISASTER PAYMENTS

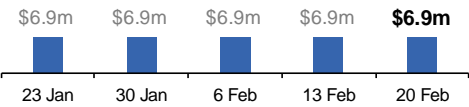
**Northern Territory**  
Lockdown (#3) from 16 Nov to 22 Nov  
Claiming period ended 27 Dec

**7,500 people have received at least one COVID Disaster Payment.**

**\$6.9m paid out as at 20 Feb 2022.**

**\$0 paid in initial payments in the week ending 20 Feb 2022.**

Cumulative payments made by Territory since activation on 25 Aug 2021.



Date	Cumulative Payments
23 Jan	\$6.9m
30 Jan	\$6.9m
6 Feb	\$6.9m
13 Feb	\$6.9m
20 Feb	\$6.9m

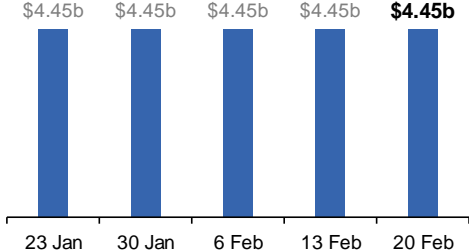
**Victoria**  
Lockdown (#6) from 6 Aug to 28 Oct  
Claiming period ended 9 Dec

**745,000 people have received at least one COVID Disaster Payment.**

**\$4.45b paid out as at 20 Feb 2022.**

**\$10,000 paid in initial and reoccurring payments in the week ending 20 Feb 2022.**

Cumulative payments made by State since activation on 8 Jun 2021.



Date	Cumulative Payments
23 Jan	\$4.45b
30 Jan	\$4.45b
6 Feb	\$4.45b
13 Feb	\$4.45b
20 Feb	\$4.45b

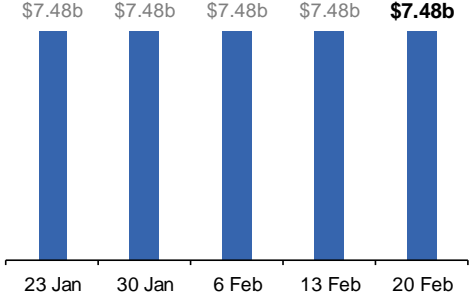
**New South Wales**  
Lockdown from 24 Jun to 10 Oct  
Claiming period ended 27 Nov

**1.08m people have received at least one COVID Disaster Payment.**

**\$7.48b paid out as at 20 Feb 2022.**

**\$11,000 paid in initial and reoccurring payments in the week ending 20 Feb 2022.**

Cumulative payments made by State since activation on 1 Jul 2021.



Date	Cumulative Payments
23 Jan	\$7.48b
30 Jan	\$7.48b
6 Feb	\$7.48b
13 Feb	\$7.48b
20 Feb	\$7.48b

**Australian Capital Territory**  
Lockdown from 12 Aug to 14 Oct  
Claiming period ended 25 Nov

**65,000 people have received at least one COVID Disaster Payment.**

**\$344.7m paid out as at 20 Feb 2022.**

**\$1,000 paid in initial and reoccurring payments in the week ending 20 Feb 2022.**

Cumulative payments made by Territory since activation on 20 Aug 2021.

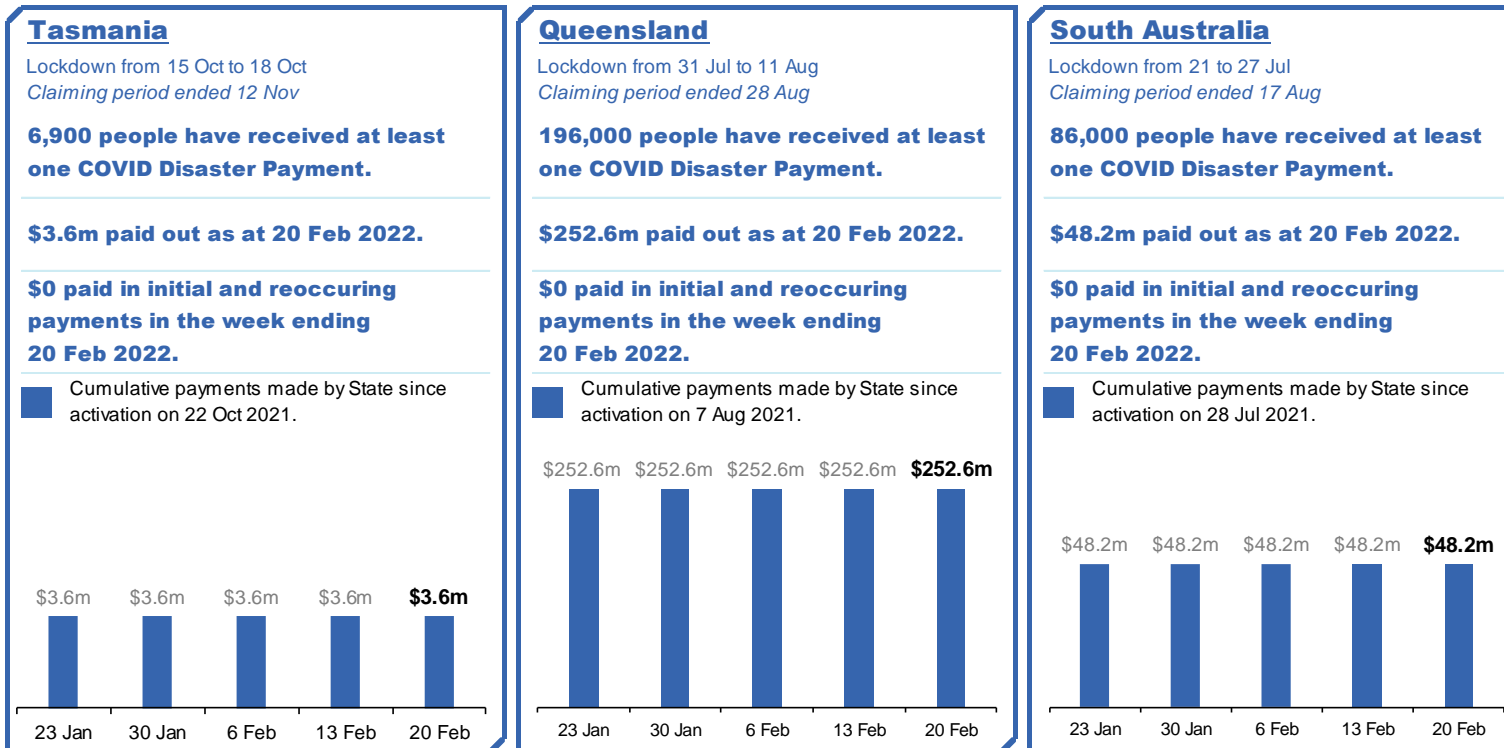


Date	Cumulative Payments
23 Jan	\$344.7m
30 Jan	\$344.7m
6 Feb	\$344.7m
13 Feb	\$344.7m
20 Feb	\$344.7m

# Pandemic Response Payments (continued)

Data as at midnight: 20 Feb 2022  
Updated weekly

## COVID-19 DISASTER PAYMENTS



# Administration and Utilisation

## Doses as at 20 February 2022

	Ordered	Available	Administered	Stock on Hand at Sites	Estimated Dose Utilisation %
	Up to 20/02/22	Delivered up to 13/02/22 including redistributions	Up to 20/02/22		(see note)
NSW	6,111,272	6,109,772	4,932,660	566,135	91%
VIC	6,979,054	6,973,154	5,784,906	490,933	93%
QLD	4,846,602	4,804,942	3,687,033	637,415	87%
WA	2,613,368	2,601,678	2,301,774	39,736	98%
SA	2,151,120	2,118,120	1,681,358	224,950	89%
TAS	640,290	639,990	578,512	-	Fully utilised
NT	394,104	380,438	301,912	40,482	89%
ACT	644,186	643,946	684,168	-	Fully utilised
<b>Jurisdiction delivered total</b>	<b>24,379,996</b>	<b>24,272,040</b>	<b>19,952,323</b>	<b>1,892,513</b>	<b>92%</b>
Commonwealth Aged Care & Disability	1,347,414	1,335,258	1,250,983	-	N/A
Commonwealth Primary Care & Other	46,780,188	45,423,612	32,093,911	8,787,340	81%
<b>Total</b>	<b>72,507,598</b>	<b>71,030,910</b>	<b>53,297,217</b>	<b>10,679,853</b>	<b>85%</b>

### About this data

- Ordered – Total doses delivered to sites. Based on logistics provider data. This figure includes doses allocated for administration in the coming week.
- Available – total doses that could have been administered to date, less doses re-distributed from States & Territories to Primary Care or Aged Care & Disability (i.e. does not include those deliveries recently received, and intended for use in the coming week).
- Administered – Doses administered as at 20 February 2022.
- Stock on Hand at Sites – Available doses minus Administered doses and a small % wastage.
- The dose utilisation is calculated based on the total doses administered and a small % wastage in line with international standards in relation to total available doses.
- For Aged Care & Disability, the doses available for administration is for the full period (up to 20 February 2022).
- Aged Care & Disability utilisation is not provided as the in-reach rollout is demand-based, with vaccines ordered based on resident numbers.