



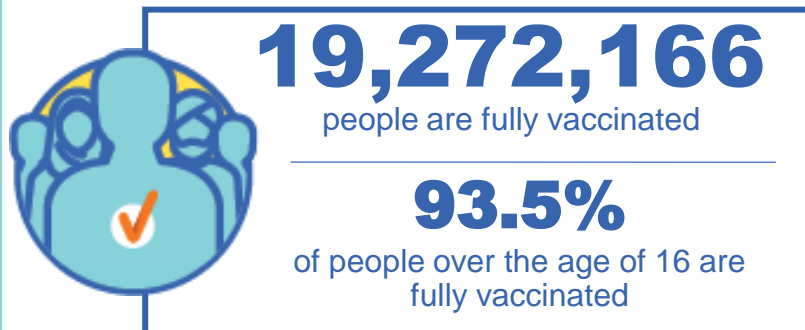
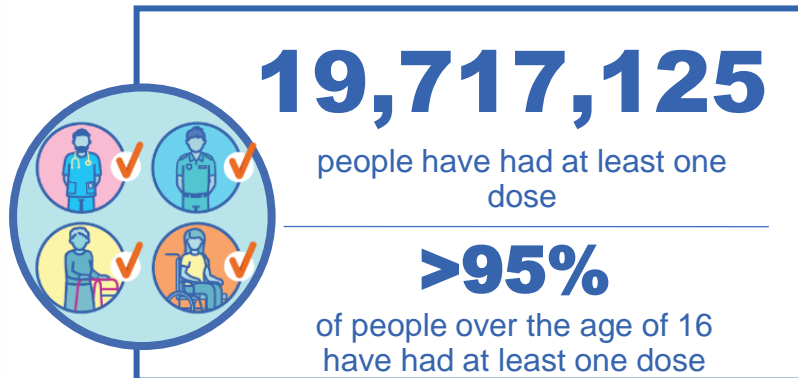
Australian Government
Operation COVID Shield

COVID-19 Vaccine Rollout

02 February 2022

Data as at:
01 Feb 2022

Total vaccine doses



50,192,907 total vaccine
doses administered nationally as at 01 February

+266,736 recorded in the last 24 hours

NSW
15,907,281
(+78,931 daily
increase)

VIC
13,235,180
(+66,182 daily
increase)

QLD
9,654,355
(+45,180 daily
increase)

WA
5,113,624
(+41,723 daily
increase)

TAS
1,109,102
(+6,076 daily
increase)

SA
3,444,026
(+18,569 daily
increase)

ACT
1,241,713
(+7,790 daily
increase)

NT
487,626
(+2,285 daily
increase)

*Administration state breakdown indicates state in which a vaccine was administered

**Overall dose count includes instances of more than two doses per person in a small number of cases.

Source: Australian Immunisation Register

Booster Vaccinations

Australia's COVID-19
Vaccine Roadmap

Data as at:
01 Feb 2022



8,191,679 total people over the age of 18 years old
who have received more than two doses nationally

+220,311 people who have received more than two doses
nationally in the last 24 hours

NSW
2,664,260
(70,071 daily
increase)

VIC
2,176,287
(57,859 daily
increase)

QLD
1,483,501
(34,993 daily
increase)

WA
809,962
(29,588 daily
increase)

TAS
177,378
(4,734 daily
increase)

SA
591,572
(14,902 daily
increase)

ACT
172,836
(4,820 daily
increase)

NT
65,324
(1,609 daily
increase)

50,559

doses administered to persons
residing in other territories or with
missing residential information

Source: Australian Immunisation Register

Vaccinations by residential location

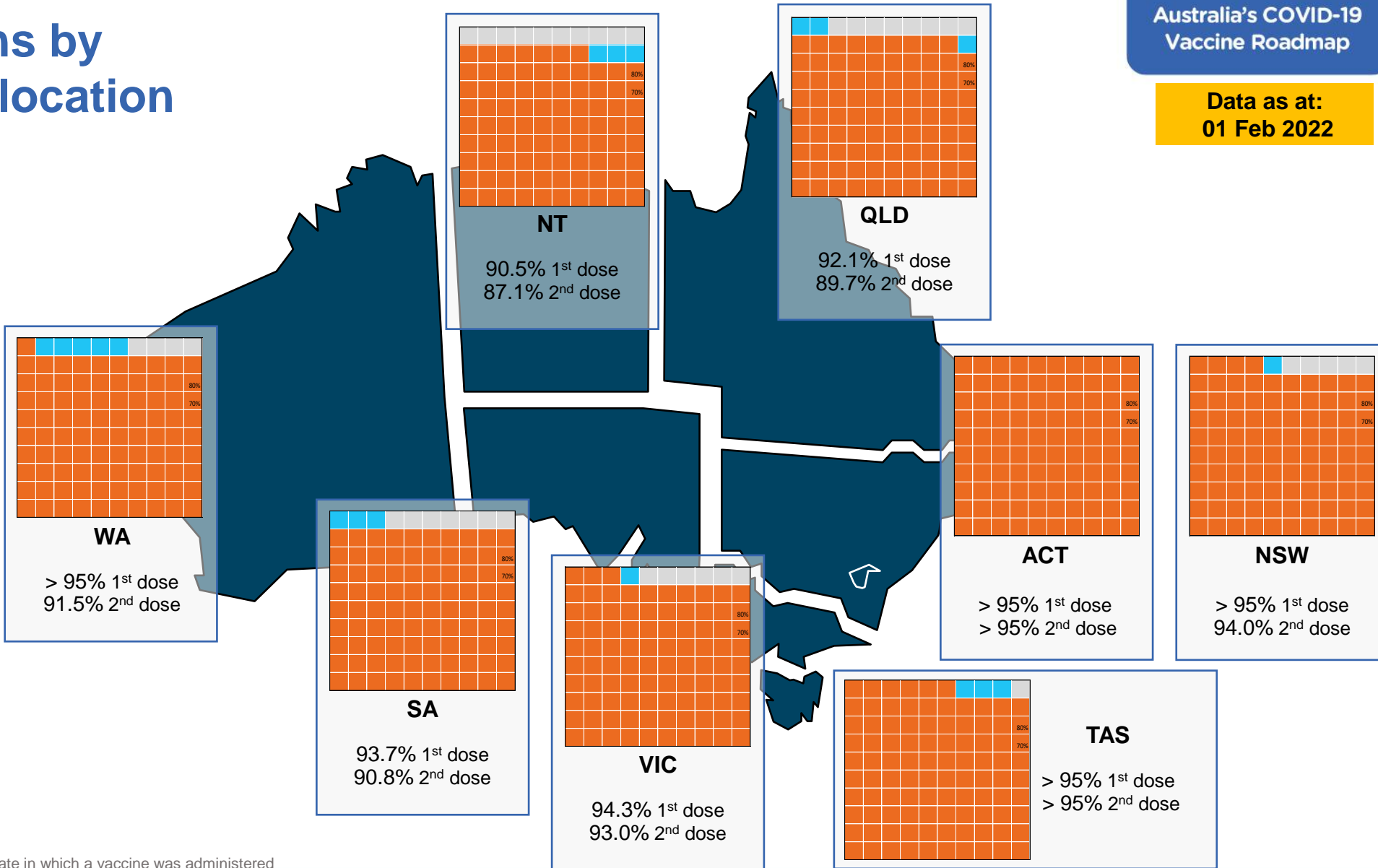
Data as at:
01 Feb 2022

First doses

Age	Today	4 weeks ago	8 weeks ago
16+	>95%	94.7%	93.4%
50+	>95%	>95%	>95%
70+	>95%	>95%	>95%

Fully vaccinated

Age	Today	4 weeks ago	8 weeks ago
16+	93.5%	91.9%	89.1%
50+	>95%	>95%	>95%
70+	>95%	>95%	>95%



*Residential state may differ from the state in which a vaccine was administered

Commonwealth and Jurisdiction vaccine doses administered

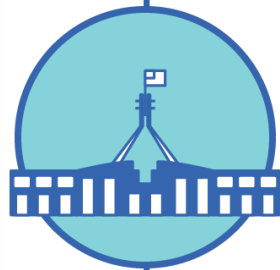
Data as at:
01 Feb 2022



50,192,907 total vaccine
doses administered nationally as at 01 February
+ 266,736 recorded in the last 24 hours



19,206,541
doses administered by state
and territory facilities
+ 59,672
recorded in the last 24 hours



30,986,366
doses administered by
commonwealth facilities
+ 207,064
recorded in the last 24 hours

29,758,596 total vaccine doses
administered in primary care settings
1,227,770 total vaccine doses
administered in aged care and disability
settings

NSW	Jurisdictions	Commonwealth
Cumulative	4,839,381	11,067,900
Daily increase	10,622	68,309

VIC	Jurisdictions	Commonwealth
Cumulative	5,542,077	7,693,103
Daily increase	17,195	48,987

QLD	Jurisdictions	Commonwealth
Cumulative	3,593,531	6,060,824
Daily increase	6,915	38,265

WA	Jurisdictions	Commonwealth
Cumulative	2,153,466	2,960,158
Daily increase	11,006	30,717

TAS	Jurisdictions	Commonwealth
Cumulative	558,564	550,538
Daily increase	1,997	4,079

SA	Jurisdictions	Commonwealth
Cumulative	1,604,241	1,839,785
Daily increase	6,528	12,041

ACT	Jurisdictions	Commonwealth
Cumulative	629,304	612,409
Daily increase	4,163	3,627

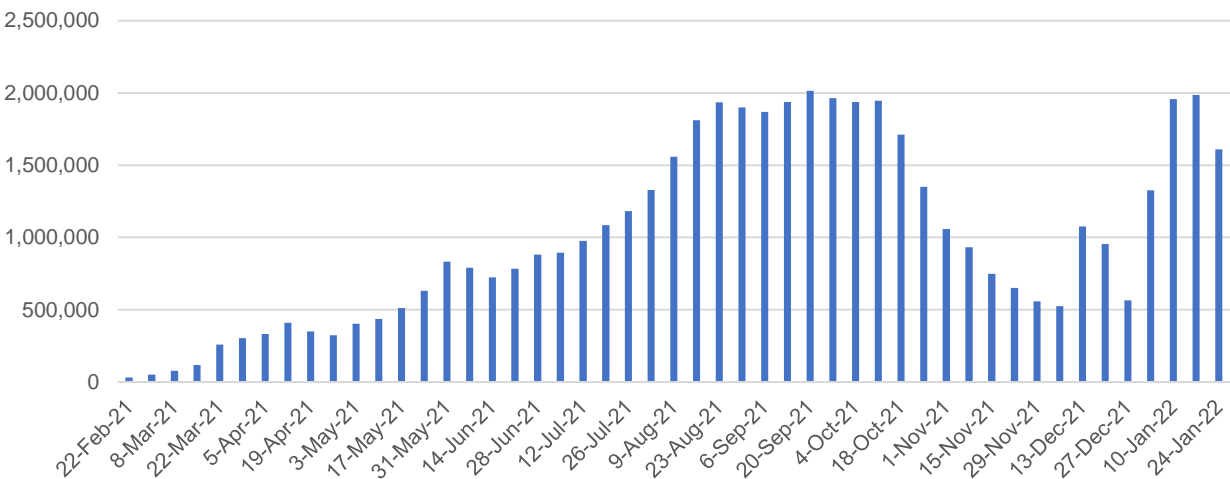
NT	Jurisdictions	Commonwealth
Cumulative	285,977	201,649
Daily increase	1,246	1,039

Vaccine milestone charts

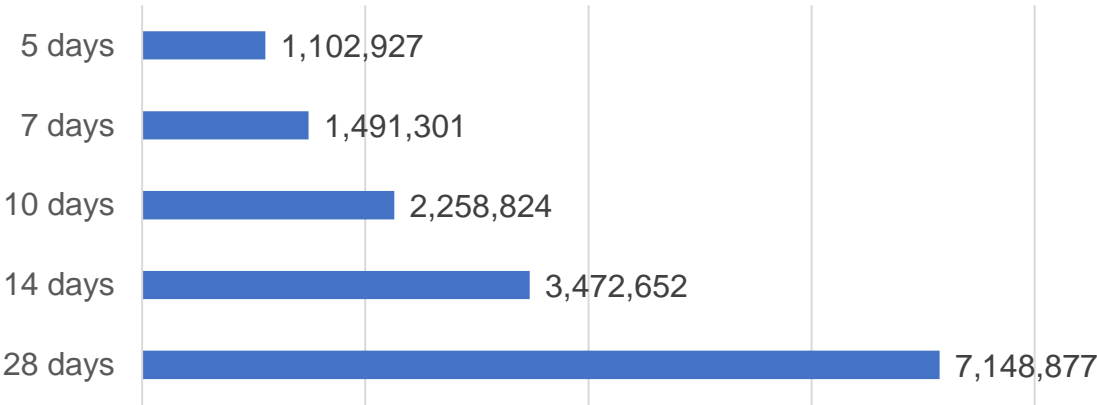
Data as at:
01 Feb 2022

Australia's COVID-19
Vaccine Roadmap

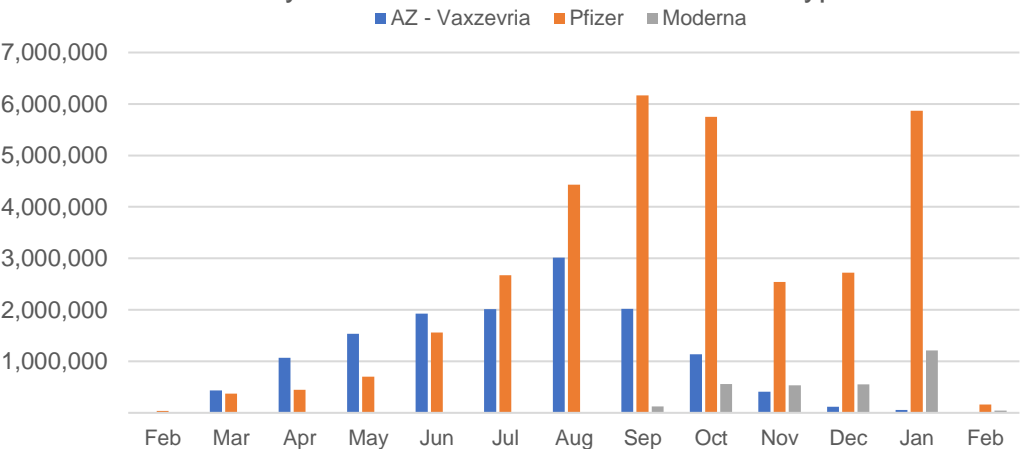
Doses Administered by Week



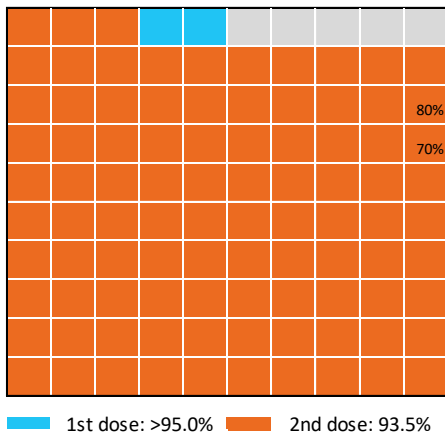
Doses Reported



Doses by administration month and vaccine type



Eligible population percentage coverage



*Each square represents 1% of the national population.
Squares are filled as milestones are achieved.

*Sourced from the Australian Immunisation Register.

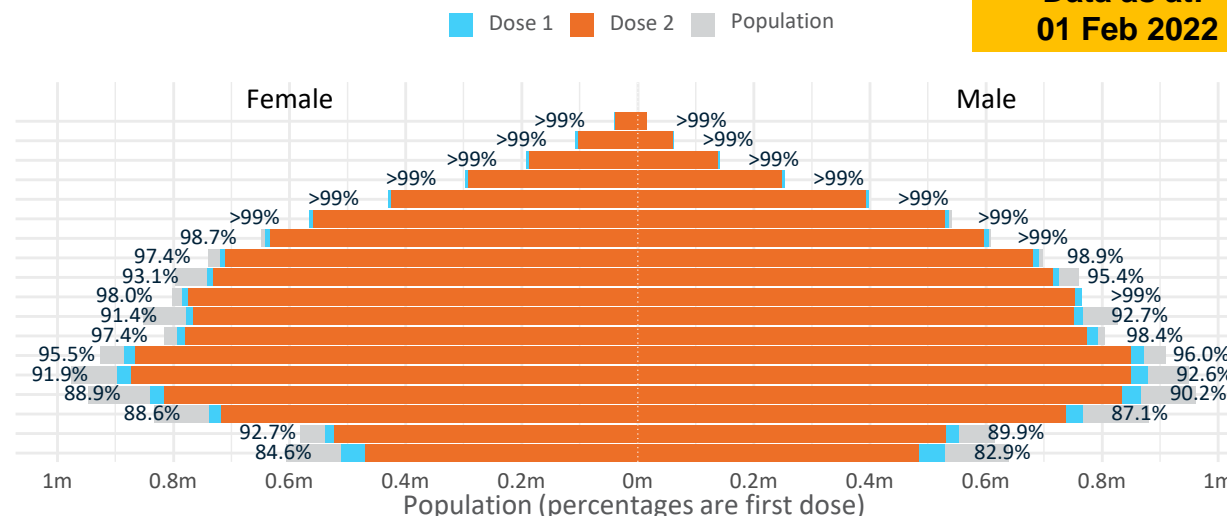
Doses by age and sex

First and second doses by age and sex

Australia's COVID-19
Vaccine Roadmap

Data as at:
01 Feb 2022

Age	Dose 1	Dose 2
95+	56,810 (>99%)	53,102 (>99%)
90-94	169,223 (>99%)	162,397 (>99%)
85-89	332,834 (>99%)	323,736 (>99%)
80-84	549,757 (>99%)	539,822 (>99%)
75-79	828,938 (>99%)	817,666 (>99%)
70-74	1,103,754 (>99%)	1,089,647 (98.6%)
65-69	1,246,984 (>99%)	1,229,665 (97.7%)
60-64	1,411,421 (98.2%)	1,391,192 (96.8%)
55-59	1,467,001 (94.3%)	1,445,806 (92.9%)
50-54	1,551,764 (>99%)	1,527,969 (97.7%)
45-49	1,545,371 (92.2%)	1,518,363 (90.6%)
40-44	1,588,583 (98.0%)	1,555,194 (96.0%)
35-39	1,761,718 (96.0%)	1,717,738 (93.6%)
30-34	1,782,896 (92.7%)	1,727,960 (89.8%)
25-29	1,718,026 (90.1%)	1,658,276 (87.0%)
20-24	1,509,893 (88.2%)	1,459,267 (85.2%)
16-19	1,092,152 (91.3%)	1,054,366 (88.2%)
12-15	1,041,640 (83.7%)	954,094 (76.7%)

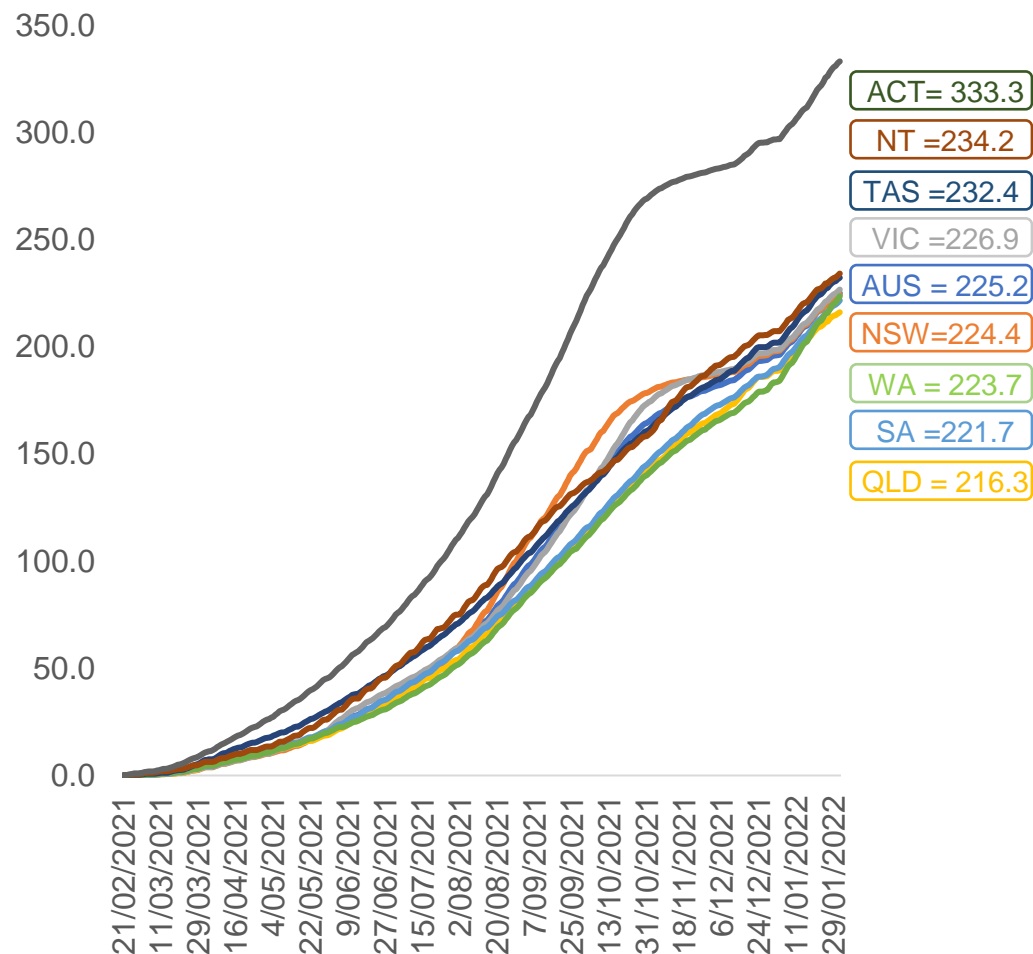


	AUS	ACT	NSW	NT	QLD	SA	TAS	VIC	WA
16 and over - dose 1	19,717,125	349,064	6,267,003	172,457	3,786,698	1,350,288	437,716	5,098,982	2,030,469
16 and over - dose 2	19,272,166	344,110	6,173,506	165,937	3,689,339	1,307,618	424,171	5,027,209	1,935,077
16 and over - population	20,619,959*	344,037	6,565,651	190,571	4,112,707	1,440,400	440,172	5,407,574	2,114,978
16 and over % with dose 1	95.62%	>99%	95.45%	90.49%	92.07%	93.74%	>99%	94.29%	96.00%
16 and over % with dose 2	93.46%	>99%	94.03%	87.07%	89.71%	90.78%	96.36%	92.97%	91.49%
5 to 11 - dose 1	953,495	27,868	293,990	10,084	172,052	67,223	24,333	267,993	84,710
5 to 11 - dose 2	2,141	63	898		328	60	15	662	79
5 to 11 - population	2,276,638	39,789	716,460	24,750	478,731	148,816	45,033	578,499	244,154
5 to 11 % with dose 1	41.88%	70.04%	41.03%	40.74%	35.94%	45.17%	54.03%	46.33%	34.70%
5 to 11 % with dose 2	0.09%	0.16%	0.13%	0.08%	0.07%	0.04%	0.03%	0.11%	0.03%
12 to 15 - dose 1	1,041,640	19,967	325,229	10,729	204,960	67,241	22,421	275,152	106,916
12 to 15 - dose 2	954,094	19,143	306,602	9,319	183,055	60,466	20,071	260,817	87,104
12 to 15 - population	1,243,990	19,693	390,330	13,060	270,146	82,747	26,308	308,611	132,869
12 to 15 % with dose 1	83.73%	>99%	83.32%	82.15%	75.87%	81.26%	85.23%	89.16%	80.47%
12 to 15 % with dose 2	76.70%	97.21%	78.55%	71.36%	67.76%	73.07%	76.29%	84.51%	65.56%

*National population will not equal sum of listed jurisdictions due to a small number of people counted in national population residing in some 'other' territories. Sum of state doses will not add to national total as some records are unable to be geocoded to a State or Territory.
Doses sourced from Australian Immunisation Register, population from ABS ERP June 2020

Vaccinations by location

Cumulative total doses administered vs eligible state populations*

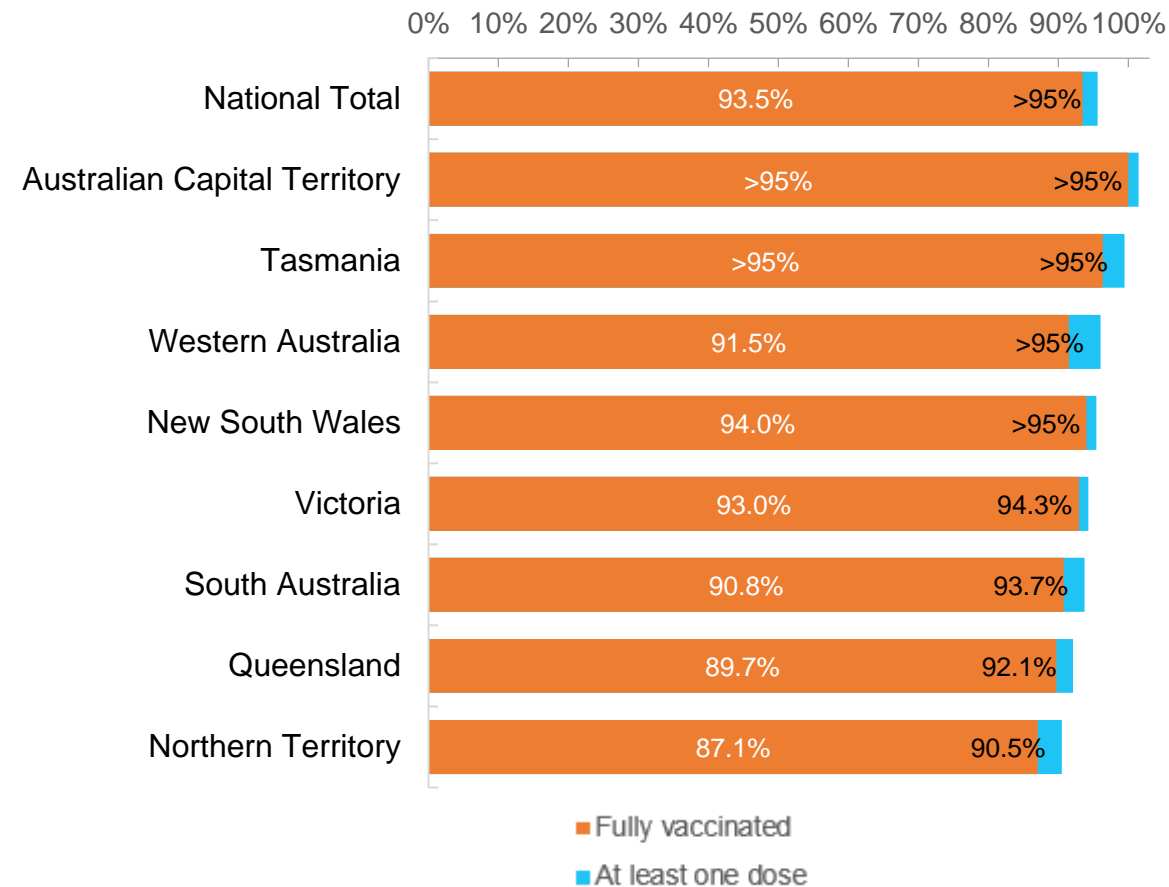


*Not an indication of percentage vaccinated, numbers will exceed 100 due to multiple doses required per person of the population. All doses are included for those aged 12 and above, and are based on vaccination provider location.

Data as at:
01 Feb 2022

Australia's COVID-19
Vaccine Roadmap

First and Second Doses by residential location



Aboriginal and Torres Strait Islander peoples

Number of people vaccinated

Data as at:
01 Feb 2022
Updated weekly

Australia's COVID-19
Vaccine Roadmap



426,625

people over the age of 16
have had at least one dose

81.8%

of people over the age of 16
have had at least one dose



395,442

people over the age of 16
are fully vaccinated

75.8%

of people over the age of 16 are
fully vaccinated



**46,238
(65.0%)**

people aged 12-15 years
have had at least one dose

174 Aboriginal community controlled health services (ACCHS)

0#	50	27	42	12	3	21	19
ACT	NSW	NT	QLD	SA	TAS	VIC	WA

Medicare Address State ^{##}	Individuals Dose 1	Individuals Dose 1 %	Individuals Dose 2	Individuals Dose 2 %
Australian Capital Territory	4,885	90.9%	4,745	88.3%
New South Wales	135,563	86.4%	131,880	84.1%
Northern Territory	41,250	87.4%	37,575	79.6%
Queensland	112,403	79.2%	103,321	72.8%
South Australia	19,356	77.3%	17,307	69.1%
Tasmania	14,361	87.3%	13,624	82.8%
Victoria	35,241	89.9%	34,245	86.4%
Western Australia	47,736	75.6%	39,514	62.6%
Unknown/Other Territories	15,830	61.2%	13,231	51.2%
Totals	426,625	81.8%	395,442	75.8%

Source: Australian Immunisation Register

*Identifying as Aboriginal and Torres Strait Islander is optional and the estimated population may be under reported.

**Includes all Aboriginal and Torres Strait Islander peoples who have received a vaccination, not limited to those administered in an ACCHS setting

#ACCHS in the ACT are currently operating as a Commonwealth Vaccine Clinics so not included to avoid double counting

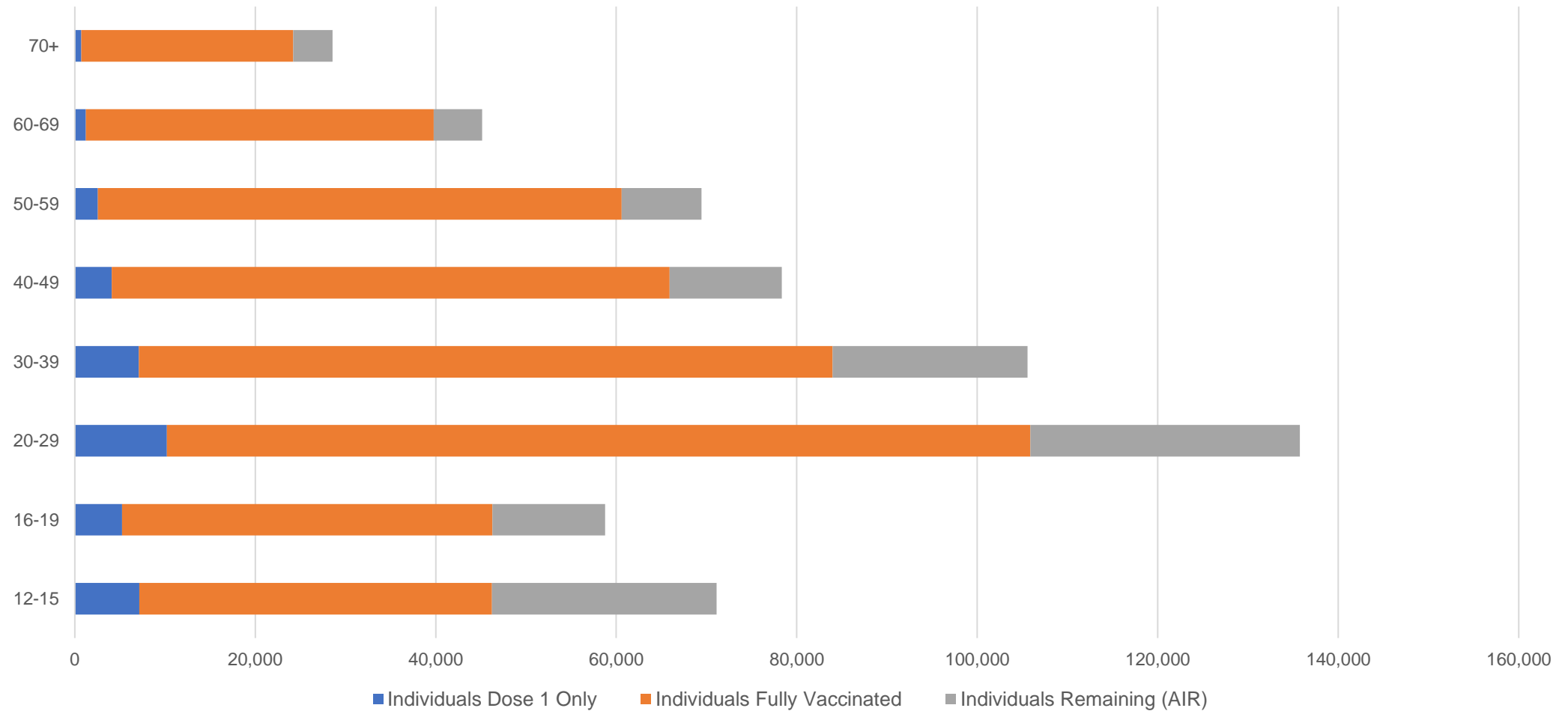
##The above table includes all identified Aboriginal and Torres Strait Islander people who are aged 16 and above by their state of residence.

Aboriginal and Torres Strait Islander peoples

Number of people vaccinated by age

Data as at:
01 Feb 2022
Updated weekly

Australia's COVID-19
Vaccine Roadmap



Source: Australian Immunisation Register

Commonwealth primary care

Data as at:
01 Feb 2022

Australia's COVID-19
Vaccine Roadmap



Primary care vaccine administration sites

5,738	128	174	3,513
GPs	CVCs	ACCHS	Pharmacies



29,758,596 total vaccine doses administered
primary care settings as at 01 February
+ 202,869 recorded in the last 24 hours

Primary care vaccinations by provider type

	Doses administered	Daily increase	7 day increase
General Practice* includes other Commonwealth	24,785,804	136,392	719,217
Pharmacy	4,972,792	66,477	327,030

NSW
10,536,361
(+66,394 daily increase)

VIC
7,406,762
(+47,385 daily increase)

QLD
5,794,179
(+37,987 daily increase)

WA
2,845,165
(+29,895 daily increase)

TAS
532,885
(+4,046 daily increase)

SA
1,764,862
(+11,803 daily increase)

ACT
473,488
(+3,320 daily increase)

NT
181,095
(+962 daily increase)

223,799 doses administered to persons
residing in other territories or with
missing residential information

*General practice includes Commonwealth Vaccination Clinics, Aboriginal Community Health Centres, Royal Flying Doctor Service and other Commonwealth vaccination facilities

Source: Australian Immunisation Register

Data as at:
01 Feb 2022

Commonwealth aged care and disability doses administered



1,227,770 (+ 4,195 last 24 hours)

Total vaccine doses administered in aged care and disability facilities as at 01 February

Number of doses administered as part of the Commonwealth aged and disability care rollout

NSW
550,191
(+1,505 daily increase)

VIC
231,859
(+929 daily increase)

QLD
193,379
(+281 daily increase)

WA
95,052
(+1,002 daily increase)

TAS
21,729
(+11 daily increase)

SA
81,846
(+259 daily increase)

ACT
16,018
(+28 daily increase)

NT
7,000
(+7 daily increase)

30,696

doses administered to persons
residing in other territories or with
missing residential information

*Sourced from the Australian Immunisation Register. Includes all persons vaccinated at participating residential aged care, disability and related industry settings.

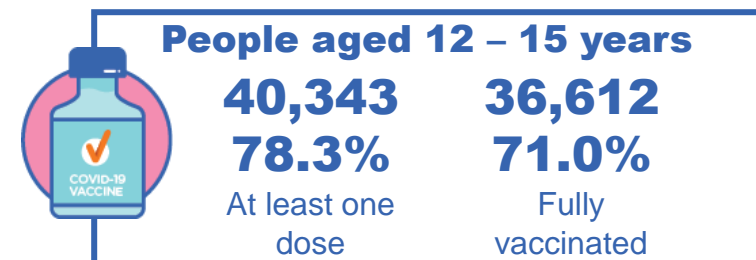
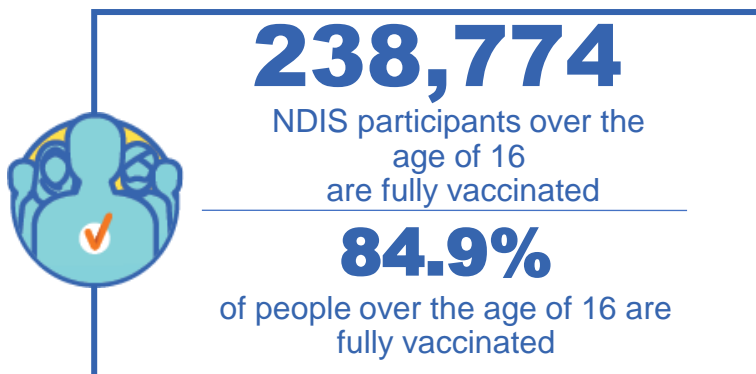
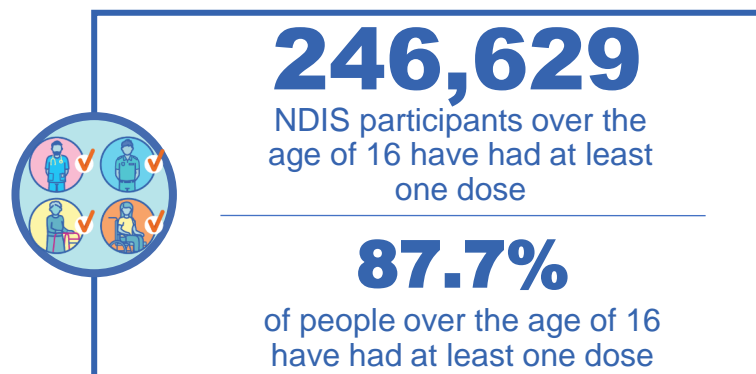
**State level breakdown indicates the residential location and may not align to the state in which the vaccination occurred.

Source: Australian Immunisation Register

National Disability Insurance Scheme (NDIS) reported vaccinations

Data as at:
27 January 2022
Updated weekly

Australia's COVID-19
Vaccine Roadmap



NDIS participant vaccinations

	People aged 16+ with at least one dose	People aged 16+ fully vaccinated	% People aged 16+ with at least one dose	% People aged 16+ fully vaccinated
ACT	4,742	4,664	90.20%	88.70%
NSW	76,905	75,510	88.60%	87.00%
NT	2,135	2,008	78.90%	74.20%
QLD	48,133	46,268	86.60%	83.20%
SA	19,860	19,046	85.10%	81.20%
TAS	6,148	5,856	87.30%	83.20%
VIC	66,196	64,807	89.30%	87.40%
WA	22,406	20,269	85.30%	78.40%
National	246,629	238,774	87.70%	84.90%

Source: Linkage between National Disability Insurance Agency data and the Australian Immunisation Register. Total NDIS participants data as at 17th October. Australian Immunisation Register data as at 26 January. Includes all participants regardless of residence type.

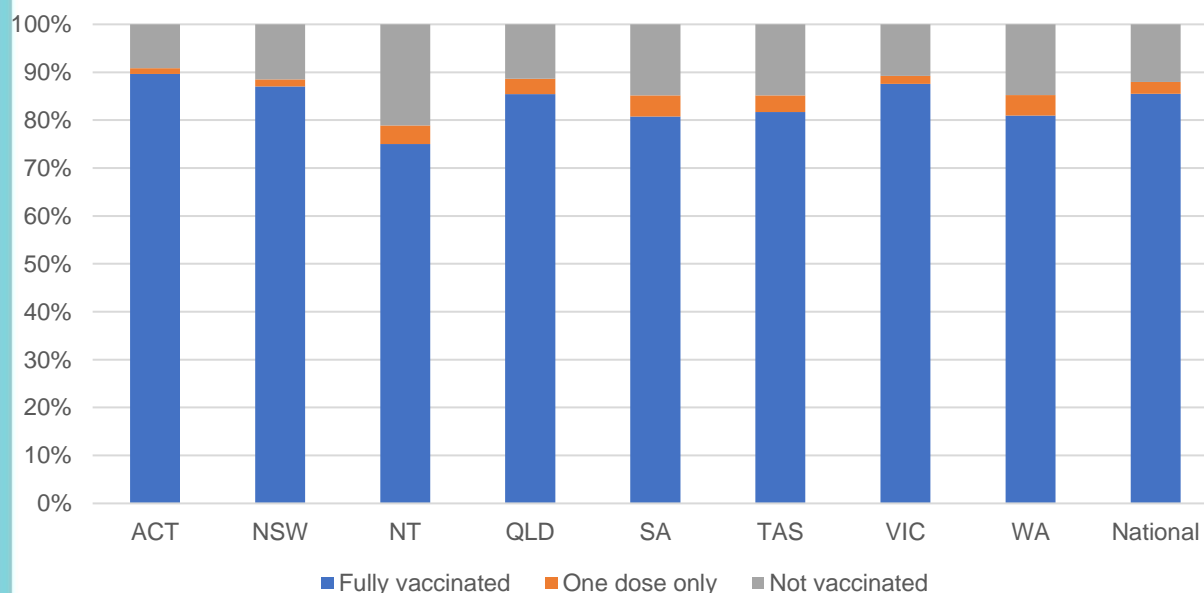
National Disability Insurance Scheme (NDIS) reported vaccinations

Data as at:
27 January 2022
Updated Weekly

Australia's COVID-19
Vaccine Roadmap

NATIONAL	Total people with at least one dose	People fully vaccinated	Total number of individuals in cohort	% People with at least one dose	% People fully vaccinated
NDIS participants living in disability accommodation	20,072	19,560	22,800	88.00%	85.80%

NDIS participants in disability and aged care accommodation



Source: Linkage between National Disability Insurance Agency data and the Australian Immunisation Register. Includes participants residing in disability accommodation only.

Source: Total NDIS participants numbers as at 17th October. Participant data as at 26 January. Australian Immunisation Register data as at 26 January. Worker data as at 27th January.

NDIS workforce vaccinations

	NDIS workers with at least one dose	NDIS workers fully vaccinated	% NDIS workers with at least one dose	% NDIS workers fully vaccinated
NSW	109,317	108,749	96.7%	96.2%
VIC	104,011	103,507	97.8%	97.3%
QLD	64,407	63,437	96.1%	94.6%
WA	30,910	29,051	97.4%	91.5%
SA	33,929	32,717	98.0%	94.5%
TAS	10,140	9,946	99.5%	97.6%
ACT	3,397	3,387	99.4%	99.1%
NT	3,062	3,017	99.4%	97.9%
TOTAL	359,173	353,811	97.2%	95.8%

Source: the NDIS Commission has established a requirement for registered NDIS providers who provide intensive disability support services to report on the vaccination status of workers they employ, or otherwise engage, to deliver NDIS-funded supports and services, and who are required to be vaccinated in accordance with in-force state and territory public health orders. The statistics reflect data reported to the NDIS Commission by registered NDIS providers and should be considered indicative and subject to change

Note: Some registered NDIS providers are yet to report on the vaccination status of their workforce. The NDIS Commission is working with those providers around reporting requirements.

Remaining workers not included include those exempt from vaccination requirements, workers whose vaccination status is not yet verified by the provider (such as workers on leave) and provider reporting anomalies.

Residential aged care vaccination rollout

Data as at:
01 Feb 2022

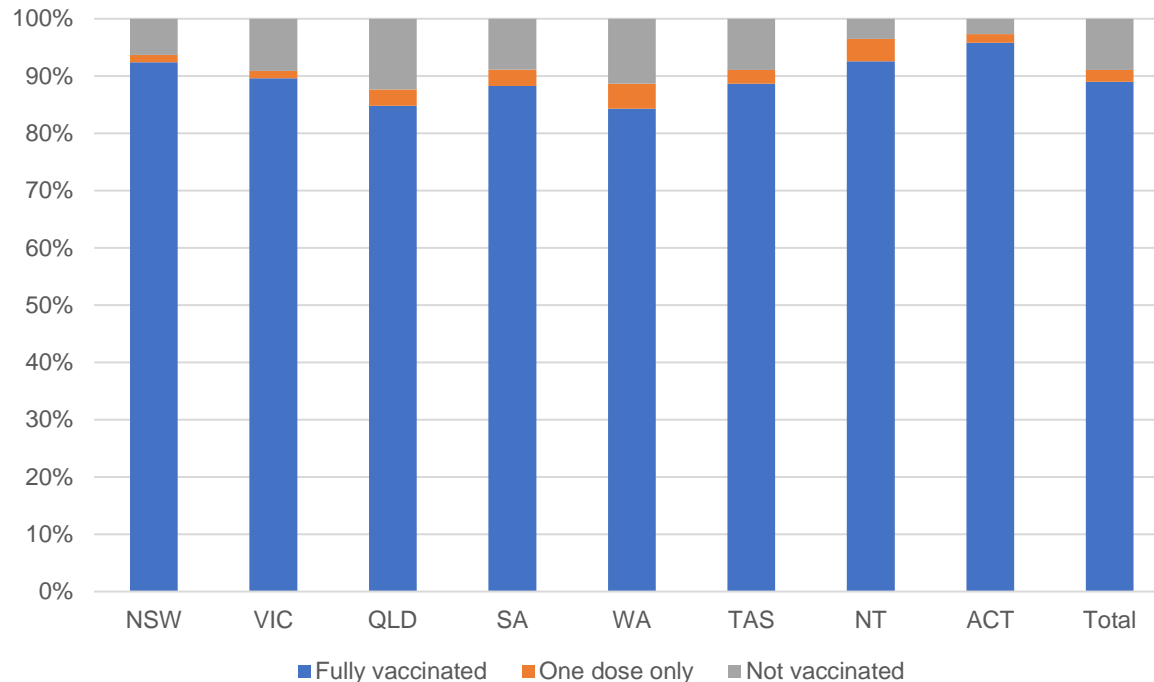
Residential aged care facilities status

100%
Commonwealth facilities visited (2,590 planned sites)

169,554
People fully vaccinated

173,485
People with at least one dose

Aged care resident vaccinations



Aged care worker vaccinations

Jurisdictions	Total workers with at least one dose	Workers fully vaccinated	% Workers with at least one dose	% Workers fully vaccinated
NSW	78,593	78,559	98.8%	98.8%
VIC	70,188	70,186	98.6%	98.6%
QLD	48,780	48,767	99.3%	99.3%
SA	27,009	26,966	98.6%	98.4%
WA	24,014	23,852	99.4%	98.7%
TAS	7,530	7,519	98.5%	98.3%
NT	862	862	100.0%	100.0%
ACT	3,065	3,065	100.0%	100.0%
Total	260,041	259,776	98.9%	98.8%

Source: My Aged Care Portal vaccination progress

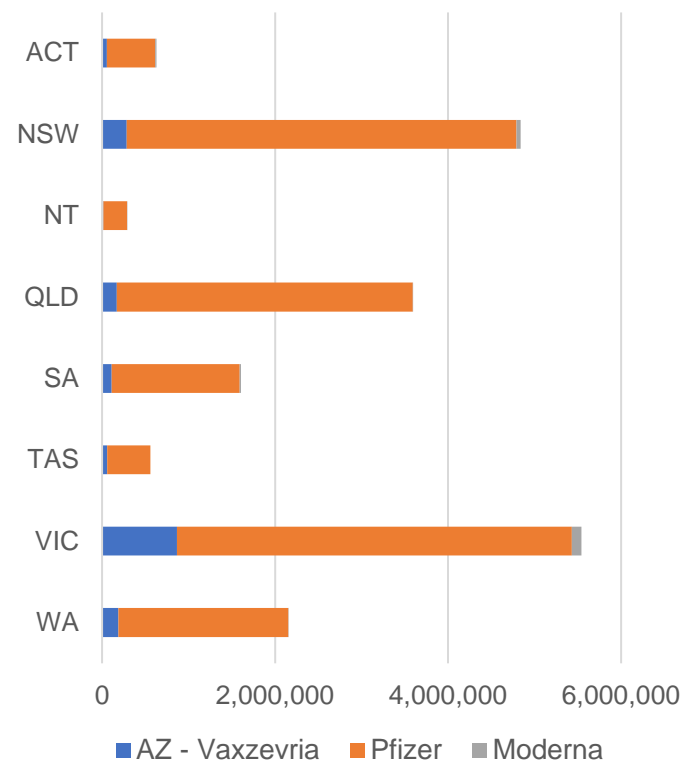
*Status updates are provided by facilities at least once per week. Reporting is updated Monday to Friday to encompass different facility updates being made on different days.

Data is sourced directly from Aged Care Service Providers and is not drawn or closely aligned with data from AIR due to inconsistencies and potential lags in uploading of records.

Data as at:
01 Feb 2022

Jurisdiction administered

Total vaccine doses administered in State and Territory clinics as at 01 February



19,206,541 total vaccine doses administered
in State and Territory clinics as at 01 February
+ **59,672** recorded in the last 24 hours
+ **426,518** recorded in the last 7 days

NSW
4,839,381
(+10,622 daily increase)

VIC
5,542,077
(+17,195 daily increase)

QLD
3,593,531
(+6,915 daily increase)

WA
2,153,466
(+11,006 daily increase)

TAS
558,564
(+1,997 daily increase)

SA
1,604,241
(+6,528 daily increase)

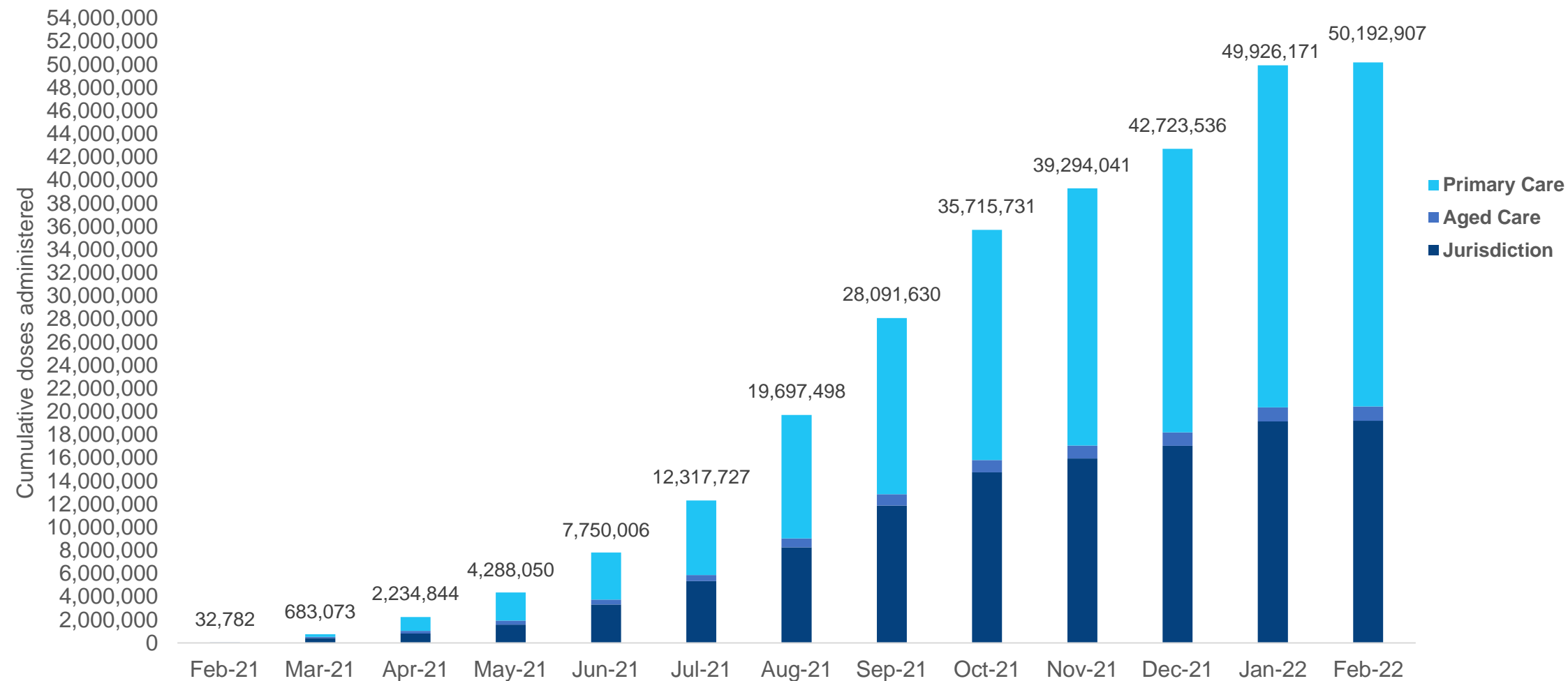
ACT
629,304
(+4,163 daily increase)

NT
285,977
(+1,246 daily increase)

*Sourced from the Australian Immunisation Register. Numbers are calculated as difference in daily cumulative reported numbers to allow for historical corrections.

Cumulative doses administered by channel

Data as at:
01 Feb 2022



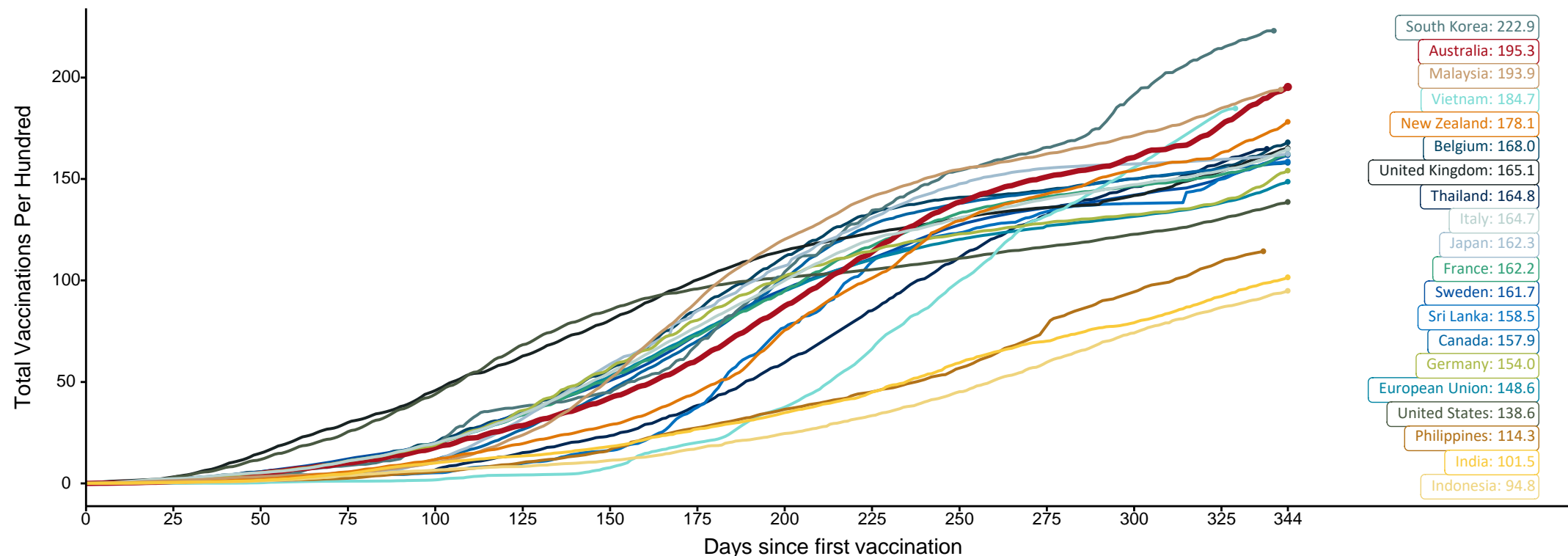
Source: Australian Immunisation Register

Doses at equivalent stages of rollout (Day 344)

Data as at:
01 Feb 2022

The x-axis is truncated at the length of Australia's vaccination program. Countries with intermittent reporting have had their doses per 100 imputed to Australia's current stage of rollout. Israel excluded as it is beyond scale of the graph.

Cumulative doses administered (01 Feb): **50,192,907**

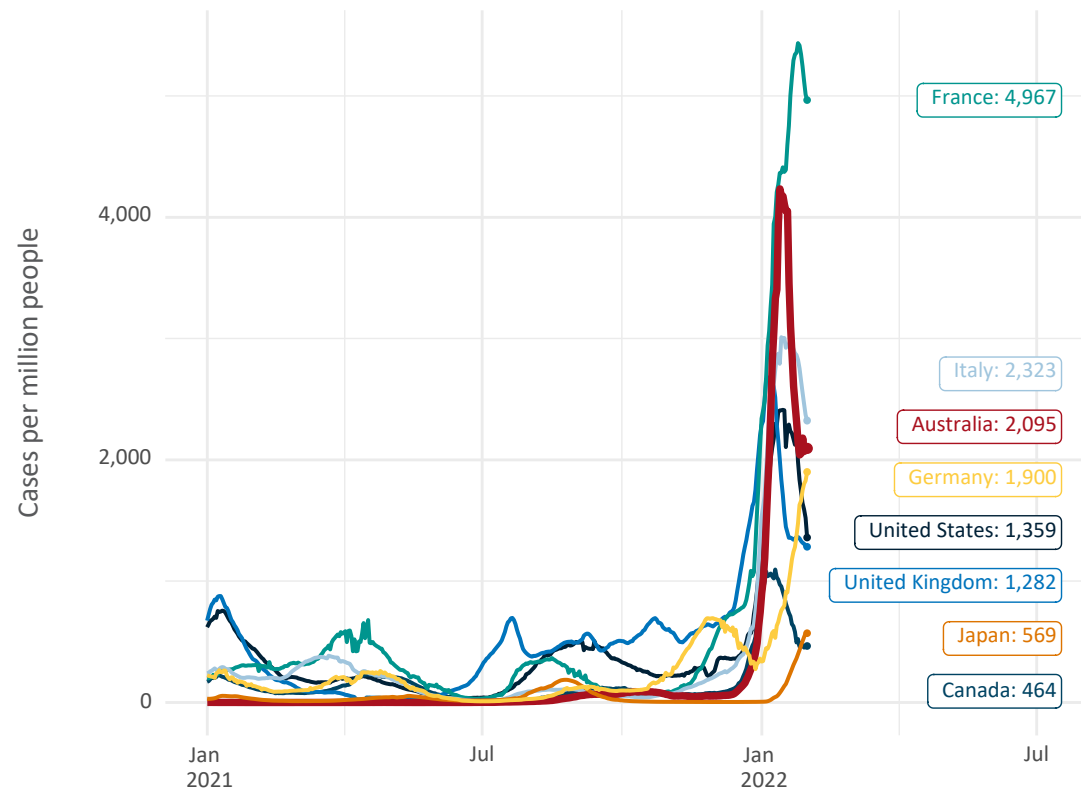


Note: From 15 September 2021, data for Australia includes all doses administered to people 12 and over. Prior to 15 September, data was for 16 and over
 Due to data revisions, Singapore has been removed from the chart
 Source: Department of Health (Australia), Our World in Data (international)
 Latest data: 01 February

Data as at:
01 Feb 2022

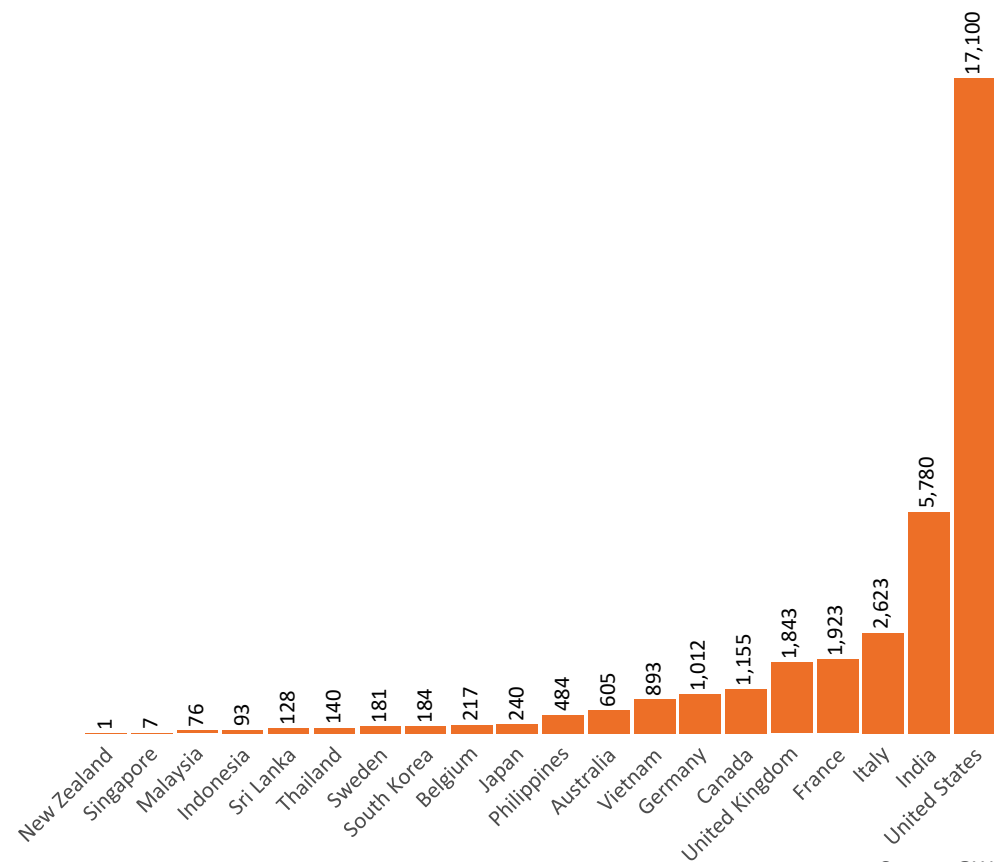
International data – COVID-19

New daily cases per million in 2021, Australia and G7 countries
Smoothed - 7 day average



Source: OWID
Data downloaded: 02 Feb 2022 08:19
Latest data: 31 Jan 2022

COVID-19 deaths in past 7 days - Australia and select countries



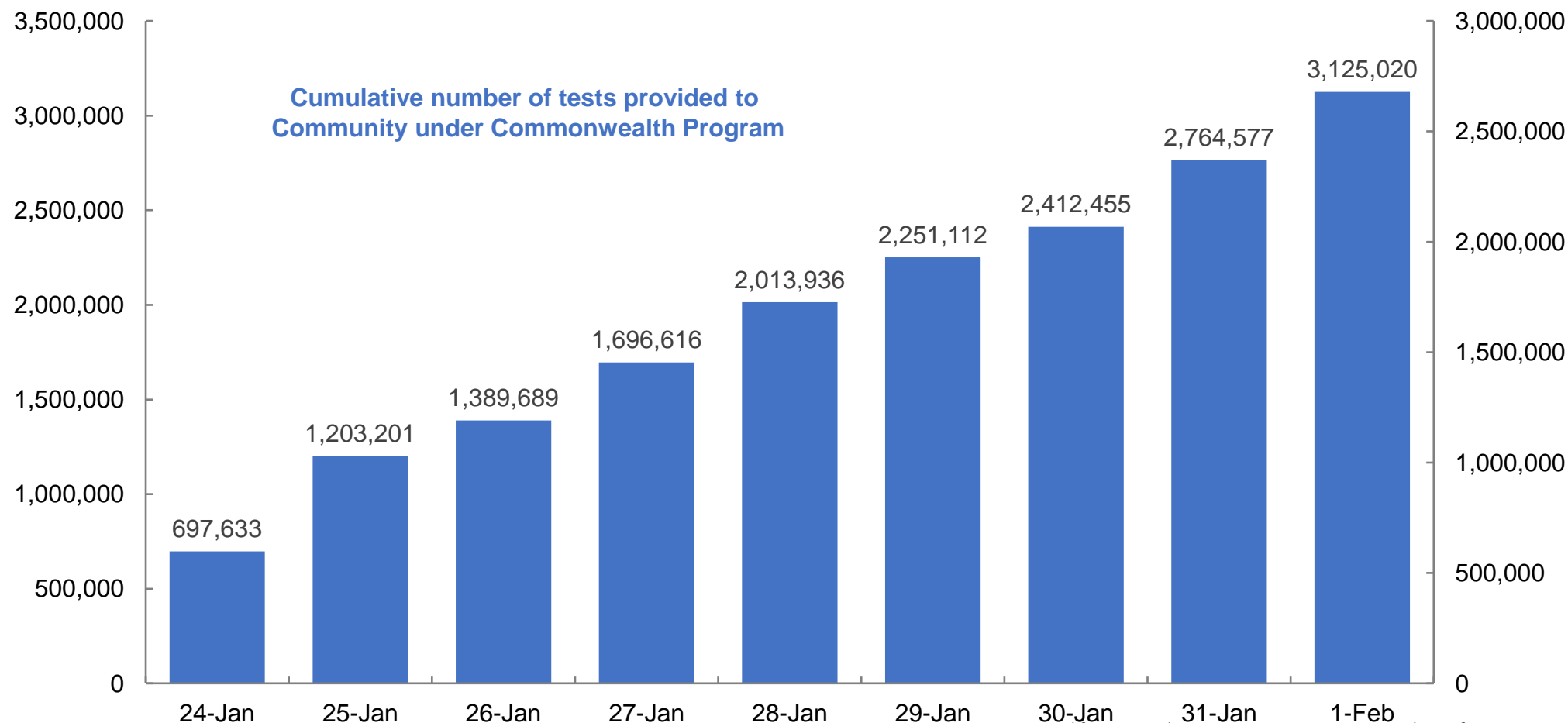
Source: OWID
Data downloaded: 02 Feb 2022 08:19
Latest data: 31 Jan 2022

Concessional rapid antigen test program

Data as at:
01 Feb 2022

Australia's COVID-19
Vaccine Roadmap

Over **3,400 pharmacies** have delivered over **3.1 million rapid antigen tests** to **approximately 745,000 concession card holders** under the Government's concessional rapid antigen test program.

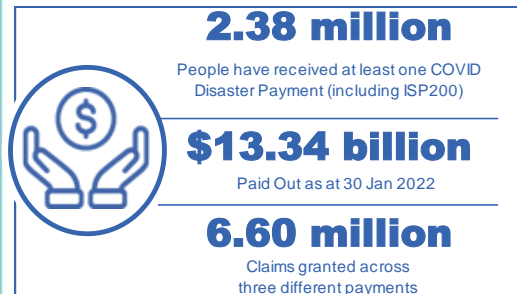


Doses sourced from Australian Immunisation Register, population from ABS ERP June 2020

Pandemic Response Payments

Australia's COVID-19
Vaccine Roadmap

Data as at midnight:
30 Jan 2022
Updated weekly



COVID Disaster Payment:	5.89 million claims received - 2.19 million individuals paid a total of \$12.59 billion.
\$200 Income Support Payment:	353,000 claims received - 183,000 individuals paid a total of \$268.91 million.
Pandemic Leave Disaster Payment:	729,000 claims received - 539,000 individuals paid a total of \$576.5 million.



COVID Disaster Payment

assisting during a
lockdown event in a
Commonwealth hotspot.

Income Support Payment \$200

for income support
recipients who lost at
least 8 hours of work.

Pandemic Leave Disaster Payment

for those who have to
self-isolate, quarantine
or care.

For more information visit:
servicesaustralia.gov.au

COVID-19 DISASTER PAYMENTS

Northern Territory

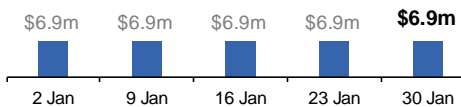
Lockdown (#3) from 16 Nov to 22 Nov
Claiming period ended 27 Dec

**7,500 people have received at least
one COVID Disaster Payment.**

\$6.9m paid out as at 30 Jan 2022.

**\$0 paid in initial payments in the week
ending 30 Jan 2022.**

Cumulative payments made by Territory since
activation on 25 Aug 2021.



Victoria

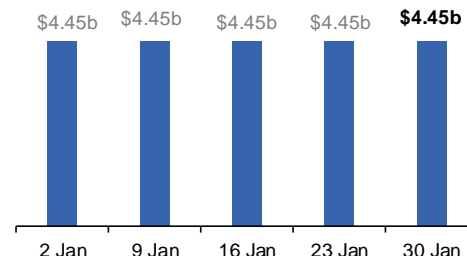
Lockdown (#6) from 6 Aug to 28 Oct
Claiming period ended 9 Dec

**745,000 people have received at least
one COVID Disaster Payment.**

\$4.45b paid out as at 30 Jan 2022.

**\$11,000 paid in initial and reoccurring
payments in the week ending
30 Jan 2022.**

Cumulative payments made by State since
activation on 8 Jun 2021.



New South Wales

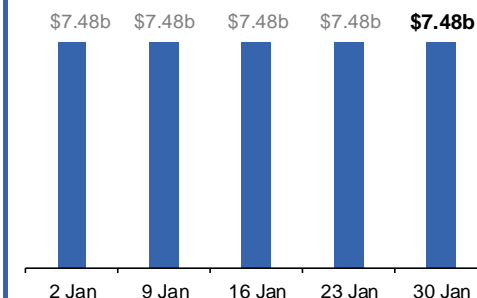
Lockdown from 24 Jun to 10 Oct
Claiming period ended 27 Nov

**1.08m people have received at least
one COVID Disaster Payment.**

\$7.48b paid out as at 30 Jan 2022.

**\$7,000 paid in initial and reoccurring
payments in the week ending
30 Jan 2022.**

Cumulative payments made by State since
activation on 1 Jul 2021.



Australian Capital Territory

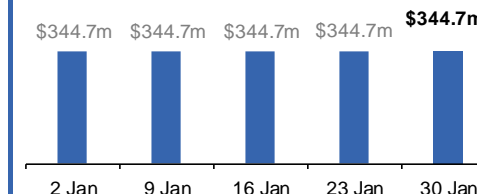
Lockdown from 12 Aug to 14 Oct
Claiming period ended 25 Nov

**65,000 people have received at least
one COVID Disaster Payment.**

\$344.7m paid out as at 30 Jan 2022.

**\$1,000 paid in initial and reoccurring
payments in the week ending
30 Jan 2022.**

Cumulative payments made by Territory since
activation on 20 Aug 2021.



Pandemic Response Payments (continued)

Data as at midnight:
30 Jan 2022
Updated weekly

COVID-19 DISASTER PAYMENTS

Tasmania

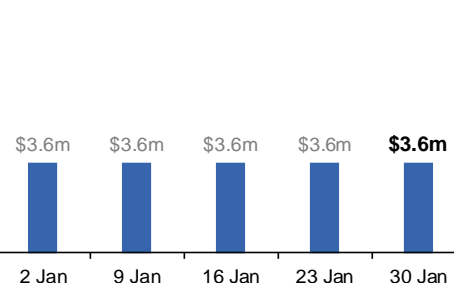
Lockdown from 15 Oct to 18 Oct
Claiming period ended 12 Nov

6,900 people have received at least one COVID Disaster Payment.

\$3.6m paid out as at 30 Jan 2022.

\$0 paid in initial and reoccurring payments in the week ending 30 Jan 2022.

Cumulative payments made by State since activation on 22 Oct 2021.



Queensland

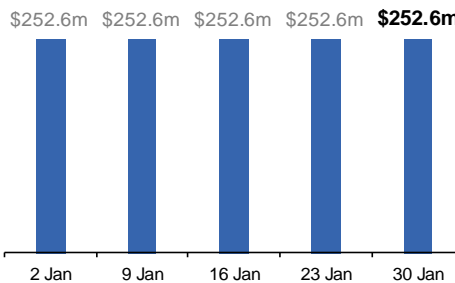
Lockdown from 31 Jul to 11 Aug
Claiming period ended 28 Aug

196,000 people have received at least one COVID Disaster Payment.

\$252.6m paid out as at 30 Jan 2022.

\$600 paid in initial and reoccurring payments in the week ending 30 Jan 2022.

Cumulative payments made by State since activation on 7 Aug 2021.



South Australia

Lockdown from 21 to 27 Jul
Claiming period ended 17 Aug

86,000 people have received at least one COVID Disaster Payment.

\$48.2m paid out as at 30 Jan 2022.

\$600 paid in initial and reoccurring payments in the week ending 30 Jan 2022.

Cumulative payments made by State since activation on 28 Jul 2021.

