



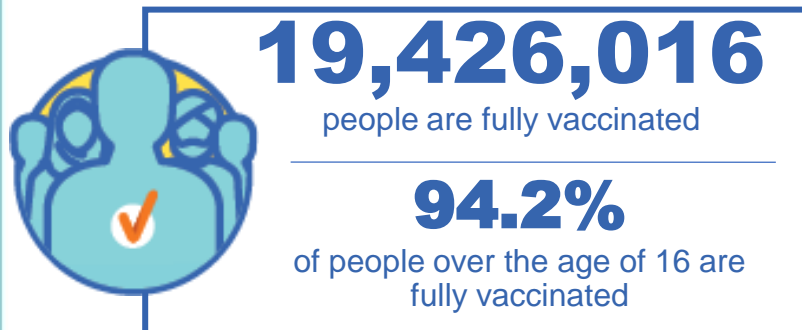
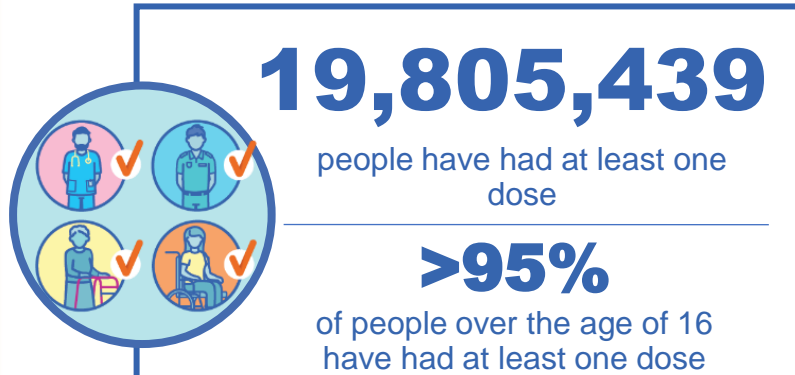
Australian Government
Operation COVID Shield

COVID-19 Vaccine Roll-out

19 February 2022

Data as at:
18 Feb 2022

Total vaccine doses



53,167,569 total vaccine
doses administered nationally as at 18 February

+156,810 recorded in the last 24 hours

NSW
16,685,205
(+41,682 daily
increase)

VIC
14,060,051
(+41,946 daily
increase)

QLD
10,152,271
(+25,453 daily
increase)

WA
5,592,675
(+26,497 daily
increase)

TAS
1,177,379
(+5,069 daily
increase)

SA
3,646,601
(+10,123 daily
increase)

ACT
1,339,166
(+4,338 daily
increase)

NT
514,221
(+1,702 daily
increase)

*Administration state breakdown indicates state in which a vaccine was administered

**Overall dose count includes instances of more than two doses per person in a small number of cases.

Source: Australian Immunisation Register

Booster Vaccinations

Australia's COVID-19
Vaccine Roadmap

Data as at:
18 Feb 2022



10,714,931 total people over the age of 16 years old
who have received more than two doses nationally

+131,432 people who have received more than two doses
nationally in the last 24 hours

NSW
3,372,912
(36,509 daily
increase)

VIC
2,915,723
(37,058 daily
increase)

QLD
1,886,569
(20,857 daily
increase)

WA
1,164,802
(20,141 daily
increase)

TAS
233,306
(4,203 daily
increase)

SA
758,122
(8,397 daily
increase)

ACT
225,088
(1,850 daily
increase)

NT
85,098
(1,265 daily
increase)

73,311

doses administered to persons
residing in other territories or with
missing residential information

Source: Australian Immunisation Register

Vaccinations by residential location

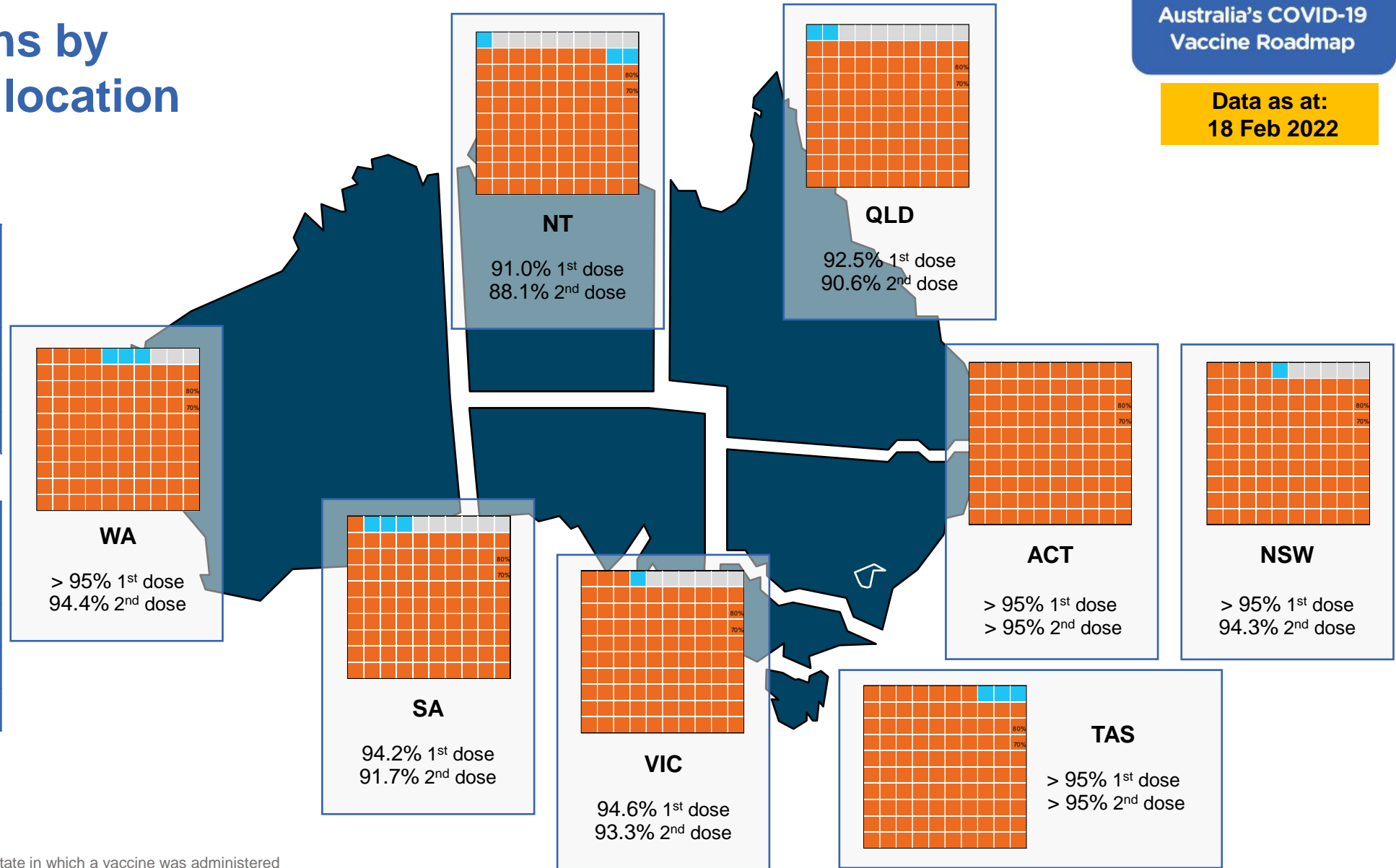
Data as at: 18 Feb 2022

First doses

Age	Today	4 weeks ago	8 weeks ago
16+	>95%	>95%	94.6%
50+	>95%	>95%	>95%
70+	>95%	>95%	>95%

Fully vaccinated

Age	Today	4 weeks ago	8 weeks ago
16+	94.2%	93.1%	91.6%
50+	>95%	>95%	>95%
70+	>95%	>95%	>95%



*Residential state may differ from the state in which a vaccine was administered

Commonwealth and Jurisdiction vaccine doses administered

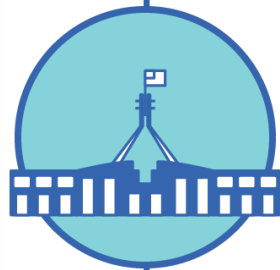
Data as at:
18 Feb 2022



53,167,569 total vaccine
doses administered nationally as at 18 February
+ 156,810 recorded in the last 24 hours



19,898,003
doses administered by state
and territory facilities
+ 33,800
recorded in the last 24 hours



33,269,566
doses administered by
commonwealth facilities
+ 123,010
recorded in the last 24 hours

32,019,653 total vaccine doses
administered in primary care settings
1,249,913 total vaccine doses
administered in aged care and disability
settings

NSW	Jurisdictions	Commonwealth
Cumulative	4,925,562	11,759,643
Daily increase	4,774	36,908

VIC	Jurisdictions	Commonwealth
Cumulative	5,767,440	8,292,611
Daily increase	9,027	32,919

QLD	Jurisdictions	Commonwealth
Cumulative	3,680,535	6,471,736
Daily increase	4,121	21,332

WA	Jurisdictions	Commonwealth
Cumulative	2,288,770	3,303,905
Daily increase	6,788	19,709

TAS	Jurisdictions	Commonwealth
Cumulative	577,829	599,550
Daily increase	2,230	2,839

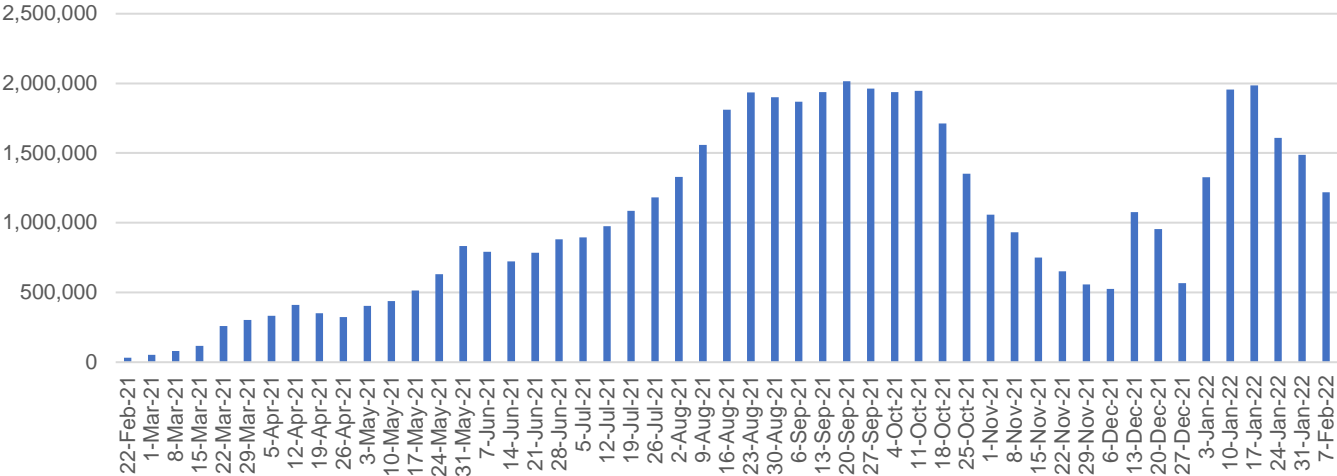
SA	Jurisdictions	Commonwealth
Cumulative	1,675,844	1,970,757
Daily increase	3,255	6,868

ACT	Jurisdictions	Commonwealth
Cumulative	681,143	658,023
Daily increase	2,684	1,654

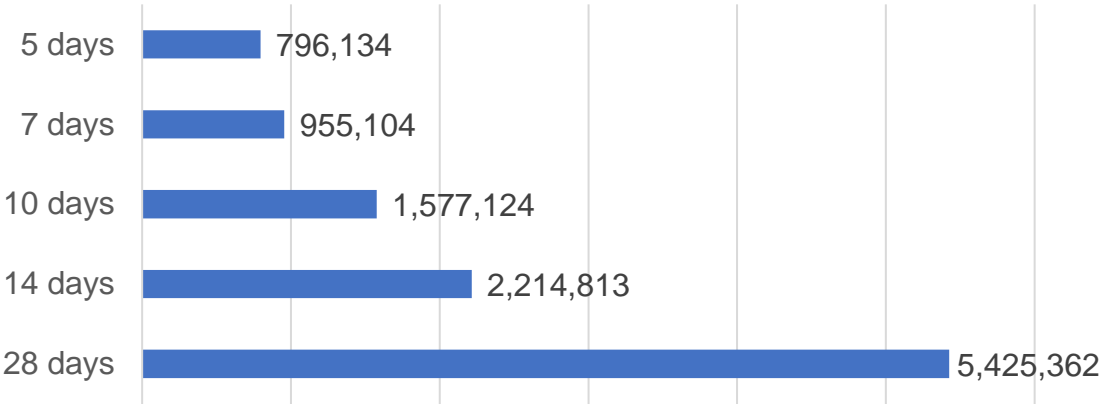
NT	Jurisdictions	Commonwealth
Cumulative	300,880	213,341
Daily increase	921	781

Vaccine milestone charts

Doses Administered by Week



Doses Reported

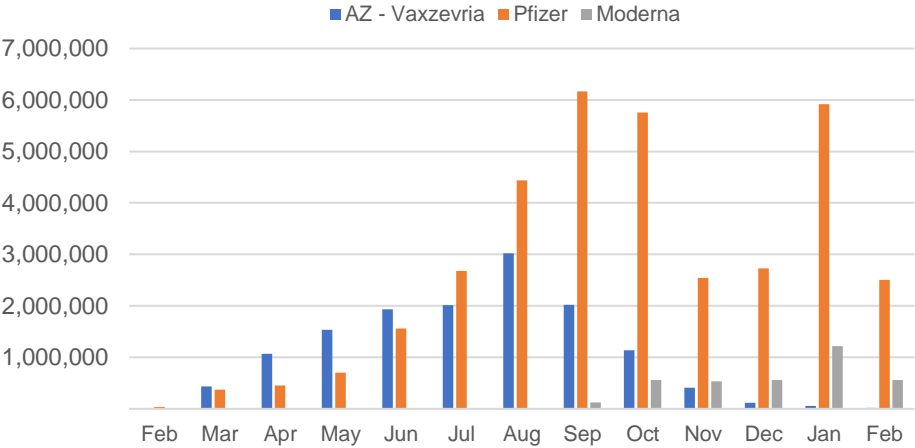


*Sourced from the Australian Immunisation Register.

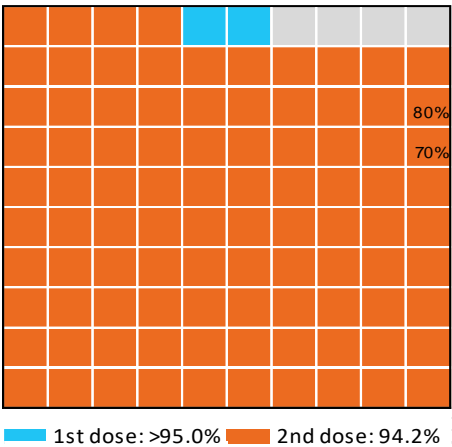
Data as at:
18 Feb 2022

Australia's COVID-19
Vaccine Roadmap

Doses by administration month and vaccine type



Eligible population percentage coverage



*Each square represents 1% of the national population. Squares are filled as milestones are achieved.

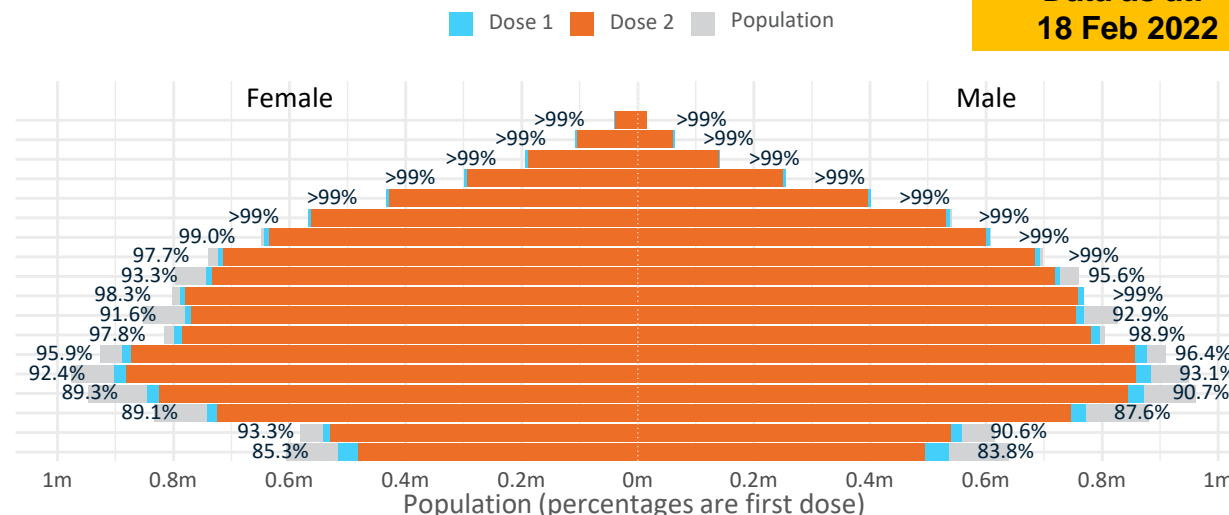
Data as at:
18 Feb 2022

Doses by age and sex

First and second doses by age and sex

	16+	50+	12-15	5-11
Dose 1	96.05% (19,805,439 doses / 20,619,959 people)	>99% (8,752,843 doses / 8,749,703 people)	84.57% (1,052,094 doses / 1,243,990 people)	48.74% (1,109,649 doses / 2,276,638 people)
Dose 2	94.21% (19,426,016 doses / 20,619,959 people)	98.66% (8,632,510 doses / 8,749,703 people)	78.45% (975,865 doses / 1,243,990 people)	0.55% (12,569 doses / 2,276,638 people)

Age	Dose 1	Dose 2
95+	57,915 (>99%)	54,370 (>99%)
90-94	171,100 (>99%)	164,817 (>99%)
85-89	335,349 (>99%)	327,218 (>99%)
80-84	553,035 (>99%)	544,295 (>99%)
75-79	834,157 (>99%)	824,366 (>99%)
70-74	1,106,307 (>99%)	1,093,925 (99.0%)
65-69	1,251,057 (>99%)	1,235,651 (98.2%)
60-64	1,415,880 (98.6%)	1,398,150 (97.3%)
55-59	1,470,090 (94.5%)	1,451,663 (93.3%)
50-54	1,557,953 (>99%)	1,538,055 (98.3%)
45-49	1,548,324 (92.3%)	1,525,962 (91.0%)
40-44	1,596,245 (98.5%)	1,568,055 (96.8%)
35-39	1,769,357 (96.4%)	1,732,364 (94.4%)
30-34	1,792,797 (93.2%)	1,746,229 (90.8%)
25-29	1,726,935 (90.6%)	1,675,753 (87.9%)
20-24	1,518,934 (88.7%)	1,475,765 (86.2%)
16-19	1,100,004 (92.0%)	1,069,378 (89.4%)
12-15	1,052,094 (84.6%)	975,865 (78.4%)

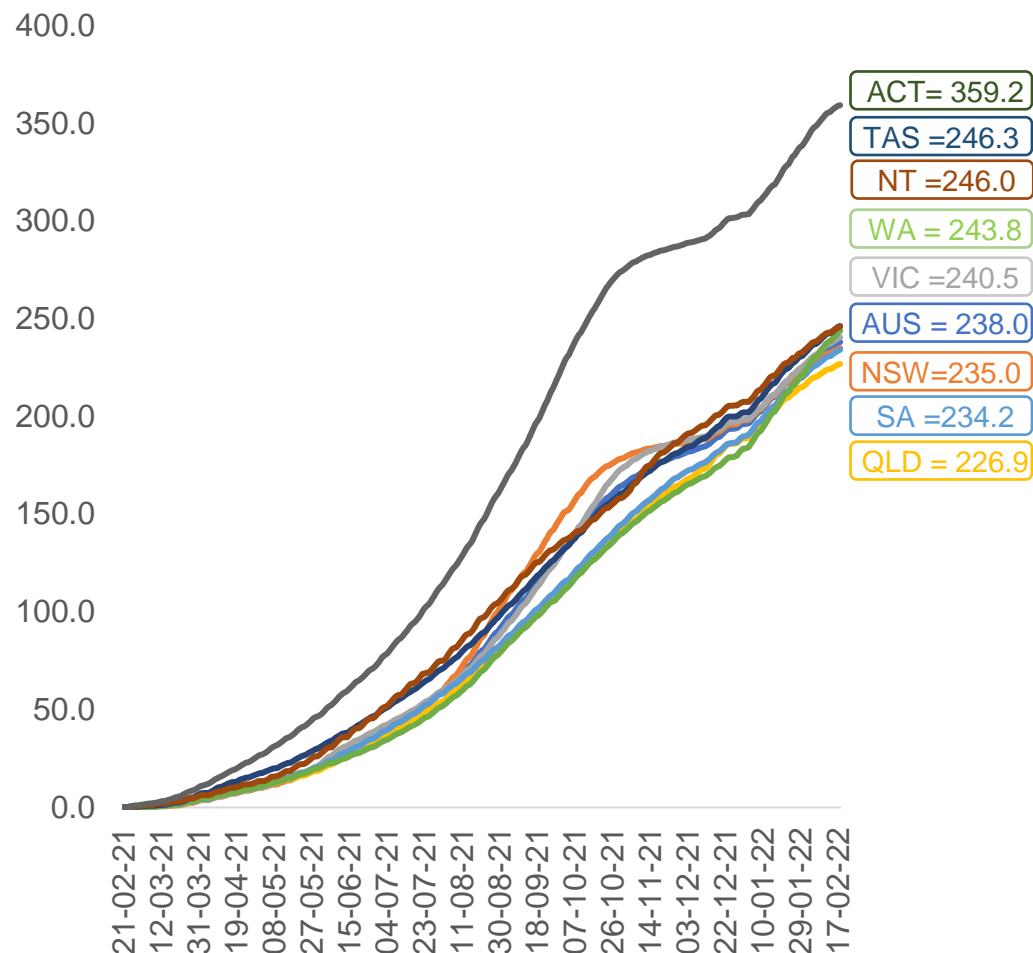


	AUS	ACT	NSW	NT	QLD	SA	TAS	VIC	WA
16 and over - dose 1	19,805,439	350,169	6,281,874	173,454	3,804,960	1,357,496	440,037	5,115,920	2,053,997
16 and over - dose 2	19,426,016	345,014	6,189,004	167,853	3,725,457	1,320,839	428,939	5,043,503	1,995,700
16 and over - population	20,619,959*	344,037	6,565,651	190,571	4,112,707	1,440,400	440,172	5,407,574	2,114,978
16 and over % with dose 1	96.05%	>99%	95.68%	91.02%	92.52%	94.24%	>99%	94.61%	97.12%
16 and over % with dose 2	94.21%	>99%	94.26%	88.08%	90.58%	91.70%	97.45%	93.27%	94.36%
5 to 11 - dose 1	1,109,649	30,561	333,187	12,276	200,932	79,626	27,453	307,831	111,025
5 to 11 - dose 2	12,569	188	5,225	94	2,157	338	56	3,962	469
5 to 11 - population	2,276,638	39,789	716,460	24,750	478,731	148,816	45,033	578,499	244,154
5 to 11 % with dose 1	48.74%	76.81%	46.50%	49.60%	41.97%	53.51%	60.96%	53.21%	45.47%
5 to 11 % with dose 2	0.55%	0.47%	0.73%	0.38%	0.45%	0.23%	0.12%	0.68%	0.19%
12 to 15 - dose 1	1,052,094	20,079	326,386	10,886	207,700	68,064	22,838	276,131	110,705
12 to 15 - dose 2	975,865	19,192	308,427	9,598	189,922	62,624	20,969	261,561	95,663
12 to 15 - population	1,243,990	19,693	390,330	13,060	270,146	82,747	26,308	308,611	132,869
12 to 15 % with dose 1	84.57%	>99%	83.62%	83.35%	76.88%	82.26%	86.81%	89.48%	83.32%
12 to 15 % with dose 2	78.45%	97.46%	79.02%	73.49%	70.30%	75.68%	79.71%	84.75%	72.00%

*National population will not equal sum of listed jurisdictions due to a small number of people counted in national population residing in some 'other' territories. Sum of state doses will not add to national total as some records are unable to be geocoded to a State or Territory.
Doses sourced from Australian Immunisation Register, population from ABS ERP June 2020

Vaccinations by location

Cumulative total doses administered vs eligible state populations*

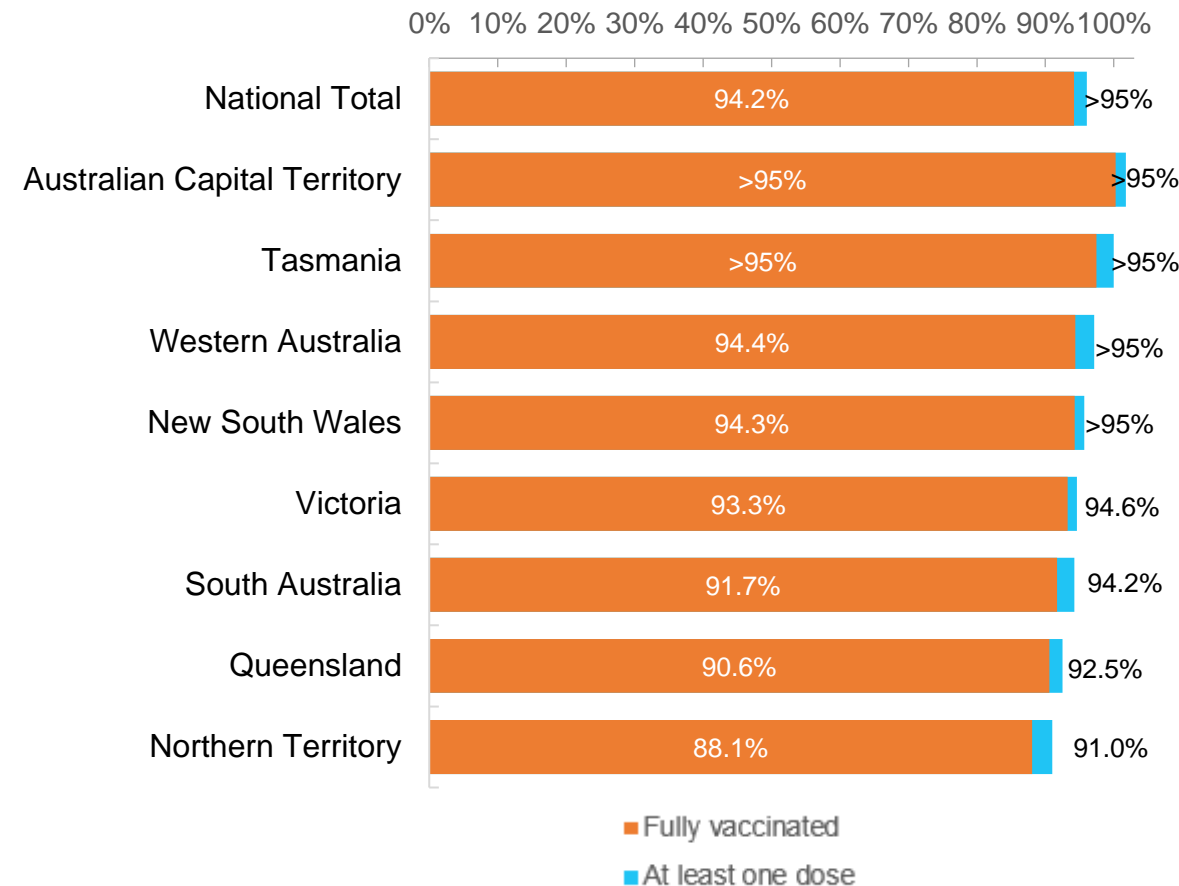


*Not an indication of percentage vaccinated, numbers will exceed 100 due to multiple doses required per person of the population. All doses are included for those aged 12 and above, and are based on vaccination provider location.

Data as at:
18 Feb 2022

Australia's COVID-19
Vaccine Roadmap

First and Second Doses by residential location



Aboriginal and Torres Strait Islander peoples

Number of people vaccinated

Data as at:
15 Feb 2022
Updated weekly

Australia's COVID-19
Vaccine Roadmap



429,831

people over the age of 16
have had at least one dose

82.7%

of people over the age of 16
have had at least one dose



402,335

people over the age of 16
are fully vaccinated

77.4%

of people over the age of 16 are
fully vaccinated



**47,215
(66.6%)**

people aged 12-15 years
have had at least one dose

175 Aboriginal community controlled health services (ACCHS)

0#	50	27	43	12	3	21	19
ACT	NSW	NT	QLD	SA	TAS	VIC	WA

Medicare Address State ^{##}	Individuals Dose 1	Individuals Dose 1 %	Individuals Dose 2	Individuals Dose 2 %
Australian Capital Territory	4,870	91.3%	4,731	88.7%
New South Wales	134,909	86.5%	131,405	84.2%
Northern Territory	41,631	88.2%	38,436	81.4%
Queensland	113,396	80.0%	105,656	74.5%
South Australia	19,495	78.1%	17,637	70.7%
Tasmania	14,144	87.8%	13,533	84.0%
Victoria	35,147	89.1%	34,208	86.8%
Western Australia	49,922	79.3%	42,743	67.9%
Unknown/Other Territories	16,317	62.8%	13,986	53.9%
Totals	429,831	82.7%	402,335	77.4%

Source: Australian Immunisation Register

*Identifying as Aboriginal and Torres Strait Islander is optional and the estimated population may be under reported.

**Includes all Aboriginal and Torres Strait Islander peoples who have received a vaccination, not limited to those administered in an ACCHS setting

#ACCHS in the ACT are currently operating as a Commonwealth Vaccine Clinics so not included to avoid double counting

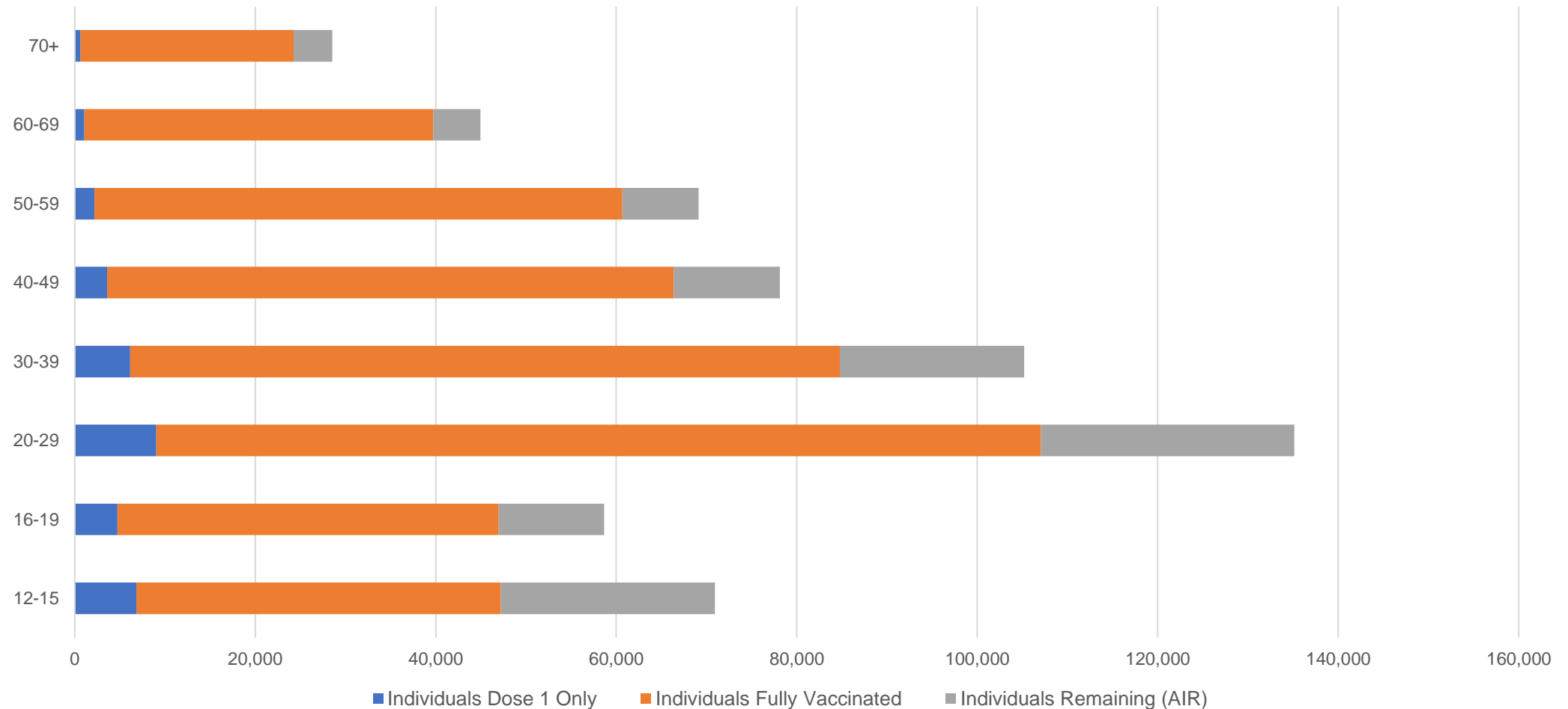
##The above table includes all identified Aboriginal and Torres Strait Islander people who are aged 16 and above by their state of residence.

Aboriginal and Torres Strait Islander peoples

Number of people vaccinated by age

Data as at:
15 Feb 2022
Updated weekly

Australia's COVID-19
Vaccine Roadmap



Source: Australian Immunisation Register

Commonwealth primary care

Data as at:
18 Feb 2022

Australia's COVID-19
Vaccine Roadmap



Primary care vaccine administration sites

5,760	128	175	3,543
GPs	CVCs	ACCHS	Pharmacies



32,019,653 total vaccine doses administered
primary care settings as at 18 February
+ 121,718 recorded in the last 24 hours

Primary care vaccinations by provider type

	Doses administered	Daily increase	7 day increase
General Practice* includes other Commonwealth	26,293,928	77,602	475,413
Pharmacy	5,725,725	44,116	245,948

NSW
11,224,551
(+36,444 daily increase)

VIC
7,990,887
(+32,173 daily increase)

QLD
6,197,707
(+21,302 daily increase)

WA
3,184,103
(+19,460 daily increase)

TAS
581,237
(+2,833 daily increase)

SA
1,894,857
(+6,992 daily increase)

ACT
508,448
(+1,405 daily increase)

NT
192,699
(+781 daily increase)

245,164

doses administered to persons
residing in other territories or with
missing residential information

*General practice includes Commonwealth Vaccination Clinics, Aboriginal Community Health Centres, Royal Flying Doctor Service and other Commonwealth vaccination facilities

Source: Australian Immunisation Register

Data as at:
18 Feb 2022

Commonwealth aged care and disability doses administered



1,249,913 (+ 1,292 last 24 hours)

Total vaccine doses administered in aged care and disability facilities as at 18 February

Number of doses administered as part of the Commonwealth aged and disability care rollout

NSW
555,116
(+329 daily increase)

VIC
238,497
(+263 daily increase)

QLD
197,261
(+246 daily increase)

WA
98,795
(+311 daily increase)

TAS
22,120
(+33 daily increase)

SA
83,392
(+41 daily increase)

ACT
16,264
(+22 daily increase)

NT
7,188
(+14 daily increase)

31,280

doses administered to persons
residing in other territories or with
missing residential information

*Sourced from the Australian Immunisation Register. Includes all persons vaccinated at participating residential aged care, disability and related industry settings.

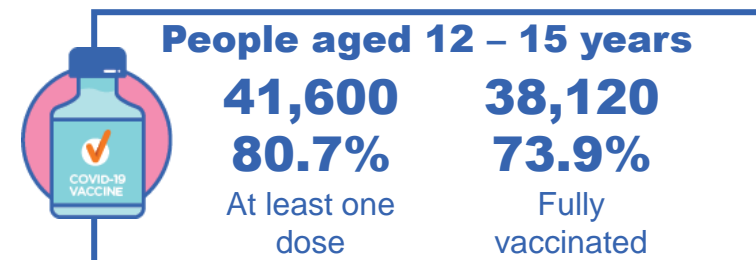
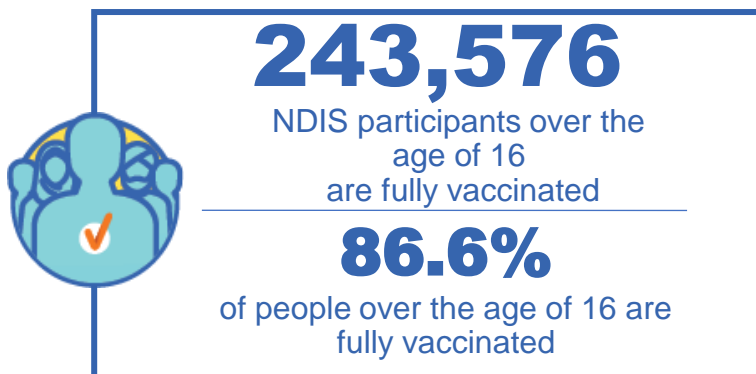
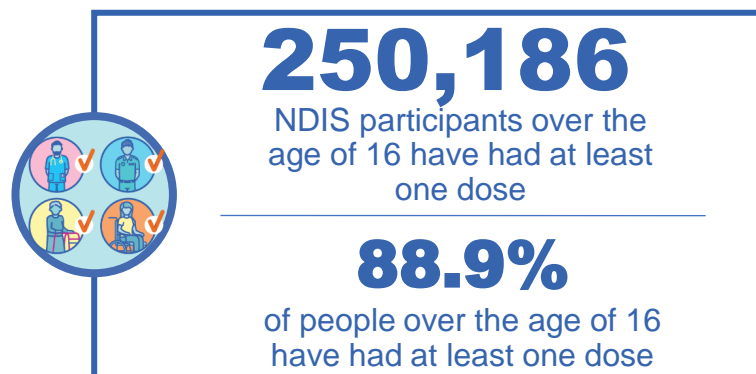
**State level breakdown indicates the residential location and may not align to the state in which the vaccination occurred.

Source: Australian Immunisation Register

National Disability Insurance Scheme (NDIS) reported vaccinations

Data as at:
17 February 2022
Updated weekly

Australia's COVID-19
Vaccine Roadmap



NDIS participant vaccinations

	People aged 16+ with at least one dose	People aged 16+ fully vaccinated	% People aged 16+ with at least one dose	% People aged 16+ fully vaccinated
ACT	4,785	4,714	91.0%	89.7%
NSW	77,542	76,177	89.4%	87.8%
NT	2,171	2,062	80.3%	76.2%
QLD	48,996	47,592	88.1%	85.6%
SA	20,307	19,544	86.6%	83.3%
TAS	6,252	6,023	88.8%	85.6%
VIC	66,808	65,484	90.1%	88.3%
WA	23,325	21,980	88.8%	83.6%
National	250,186	243,576	88.9%	86.6%

Source: Linkage between National Disability Insurance Agency data and the Australian Immunisation Register. Total NDIS participant numbers as at 17th October. Australian Immunisation Register data as at 16 February. Includes all participants regardless of residence type.

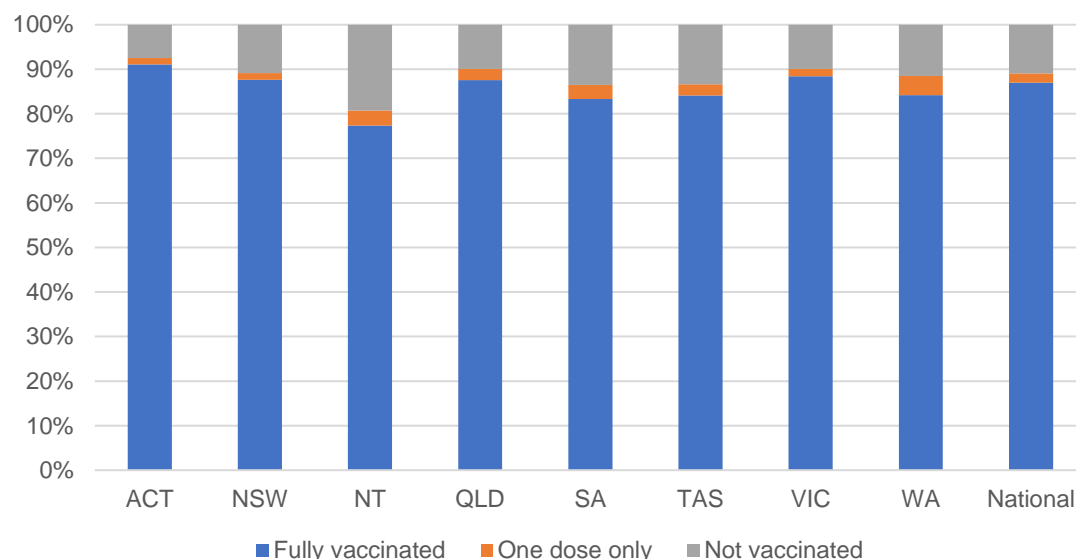
National Disability Insurance Scheme (NDIS) reported vaccinations

Data as at:
17 February 2022
Updated Weekly

Australia's COVID-19
Vaccine Roadmap

NATIONAL	Total people with at least one dose	People fully vaccinated	Total number of individuals in cohort	% People with at least one dose	% People fully vaccinated
NDIS participants living in disability accommodation	20,386	19,920	22,800	89.4%	87.4%

NDIS participants in disability and aged care accommodation



Source: Linkage between National Disability Insurance Agency data and the Australian Immunisation Register. Includes participants residing in disability accommodation only.

Source: Total NDIS participant numbers as at 17th October. Participant data as at 15 February. Australian Immunisation Register data as at 16 February. Worker data as at 17 February.

NDIS workforce vaccinations

	NDIS workers with at least one dose	NDIS workers fully vaccinated	% NDIS workers with at least one dose	% NDIS workers fully vaccinated
NSW	120,986	120,467	97.8%	97.3%
VIC	107,032	106,261	98.0%	97.3%
QLD	66,840	66,049	96.7%	95.5%
WA	31,941	30,735	97.6%	94.0%
SA	34,443	33,560	98.2%	95.7%
TAS	10,612	10,470	99.5%	98.2%
ACT	3,474	3,465	99.5%	99.3%
NT	3,244	3,201	99.4%	98.1%
TOTAL	378,572	374,208	97.7%	96.6%

Source: the NDIS Commission has established a requirement for registered NDIS providers who provide intensive disability support services to report on the vaccination status of workers they employ, or otherwise engage, to deliver NDIS-funded supports and services, and who are required to be vaccinated in accordance with in-force state and territory public health orders. The statistics reflect data reported to the NDIS Commission by registered NDIS providers and should be considered indicative and subject to change

Note: Some registered NDIS providers are yet to report on the vaccination status of their workforce. The NDIS Commission is working with those providers around reporting requirements.

Remaining workers not included include those exempt from vaccination requirements, workers whose vaccination status is not yet verified by the provider (such as workers on leave) and provider reporting anomalies.

Residential aged care vaccination rollout

Data as at:
17 Feb 2022

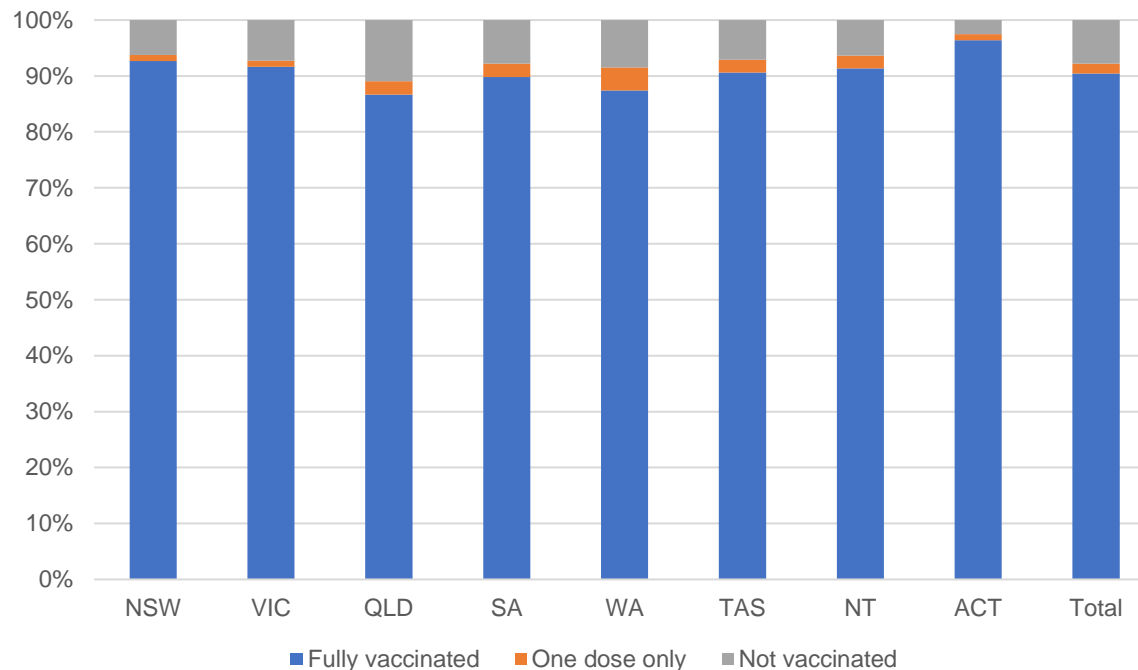
Residential aged care facilities status

100%
Commonwealth facilities visited (2,541 planned sites)

171,945
People fully vaccinated

175,350
People with at least one dose

Aged care resident vaccinations



Aged care worker vaccinations

Jurisdictions	Total workers with at least one dose	Workers fully vaccinated	% Workers with at least one dose	% Workers fully vaccinated
NSW	78,754	78,727	99.2%	99.2%
VIC	68,945	68,944	98.5%	98.5%
QLD	48,513	48,468	98.2%	98.1%
SA	27,024	26,996	98.6%	98.5%
WA	23,830	23,827	99.4%	99.4%
TAS	7,646	7,646	100.0%	100.0%
NT	874	874	100.0%	100.0%
ACT	3,027	3,027	100.0%	100.0%
Total	258,613	258,509	98.8%	98.8%

Source: My Aged Care Portal vaccination progress

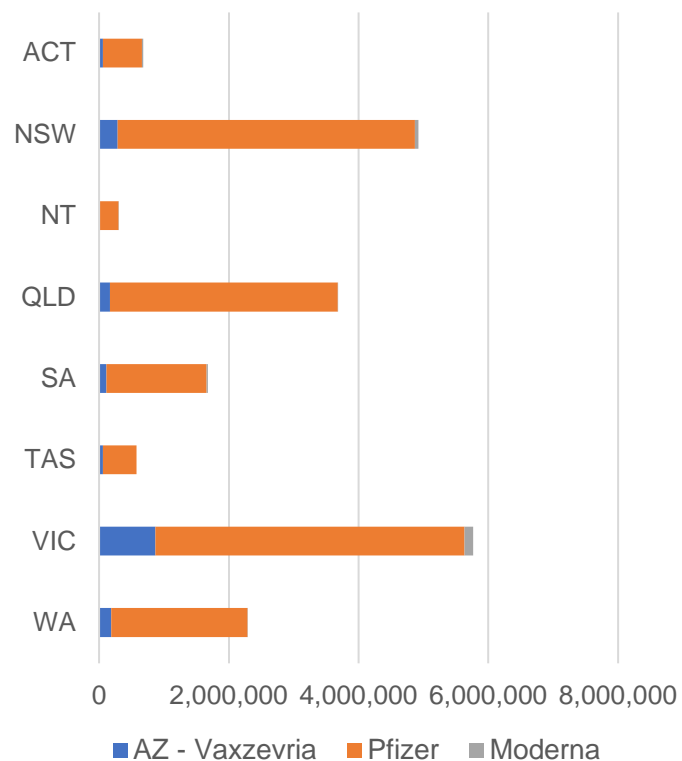
*Status updates are provided by facilities at least once per week. Reporting is updated Monday to Friday to encompass different facility updates being made on different days.

Data is sourced directly from Aged Care Service Providers and is not drawn or closely aligned with data from AIR due to inconsistencies and potential lags in uploading of records.

Data as at:
18 Feb 2022

Jurisdiction administered

Total vaccine doses administered in State and Territory clinics as at 18 February



19,898,003 total vaccine doses administered
in State and Territory clinics as at 18 February
+ **33,800** recorded in the last 24 hours
+ **227,725** recorded in the last 7 days

NSW
4,925,562
(+4,774 daily
increase)

VIC
5,767,440
(+9,027 daily
increase)

QLD
3,680,535
(+4,121 daily
increase)

WA
2,288,770
(+6,788 daily
increase)

TAS
577,829
(+2,230 daily
increase)

SA
1,675,844
(+3,255 daily
increase)

ACT
681,143
(+2,684 daily
increase)

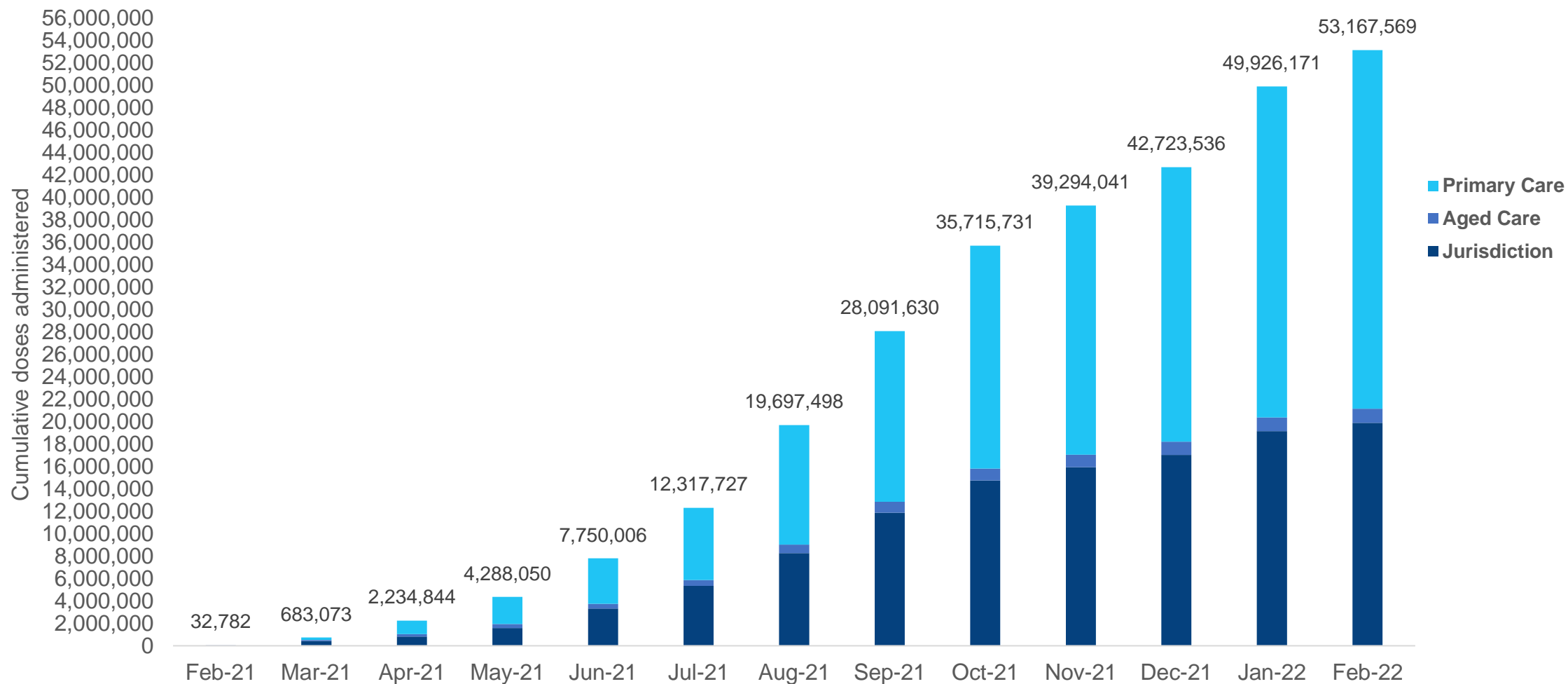
NT
300,880
(+921 daily
increase)

*Sourced from the Australian Immunisation Register. Numbers are calculated as difference in daily cumulative reported numbers to allow for historical corrections.

Source: Australian Immunisation Register

Cumulative doses administered by channel

Data as at:
18 Feb 2022



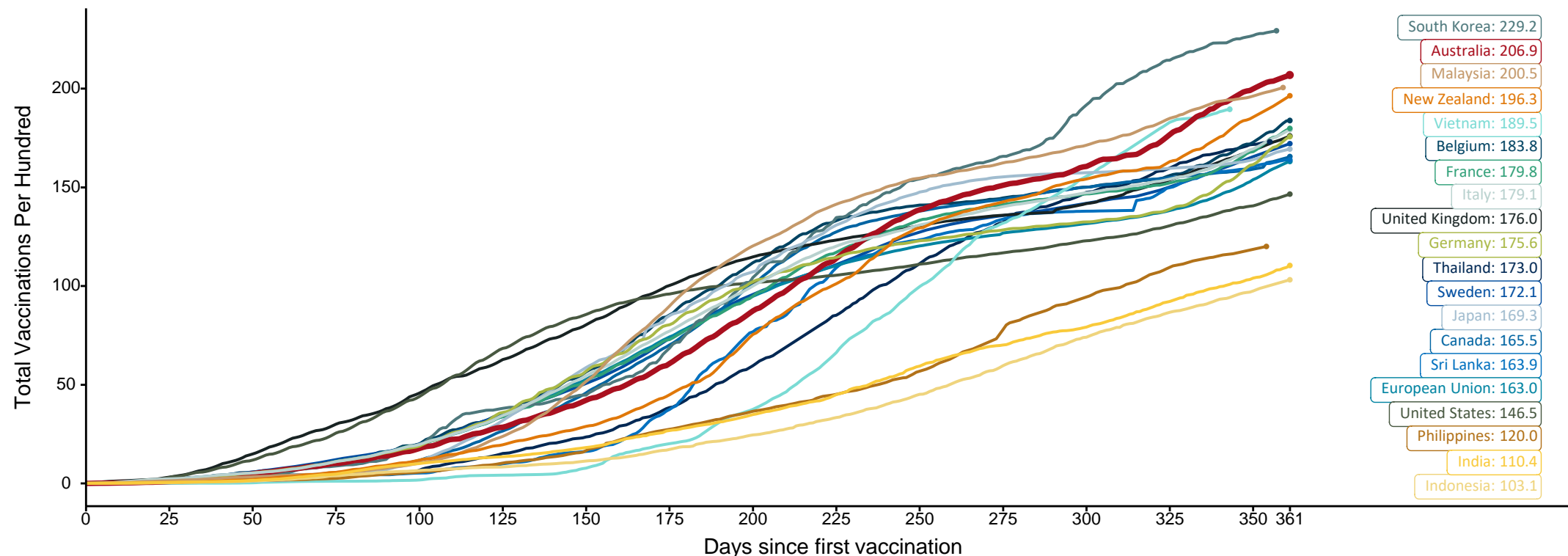
Source: Australian Immunisation Register

Doses at equivalent stages of rollout (Day 361)

Data as at:
18 Feb 2022

The x-axis is truncated at the length of Australia's vaccination program. Countries with intermittent reporting have had their doses per 100 imputed to Australia's current stage of rollout. Israel excluded as it is beyond scale of the graph

Cumulative doses administered (18 Feb): **53,167,569**

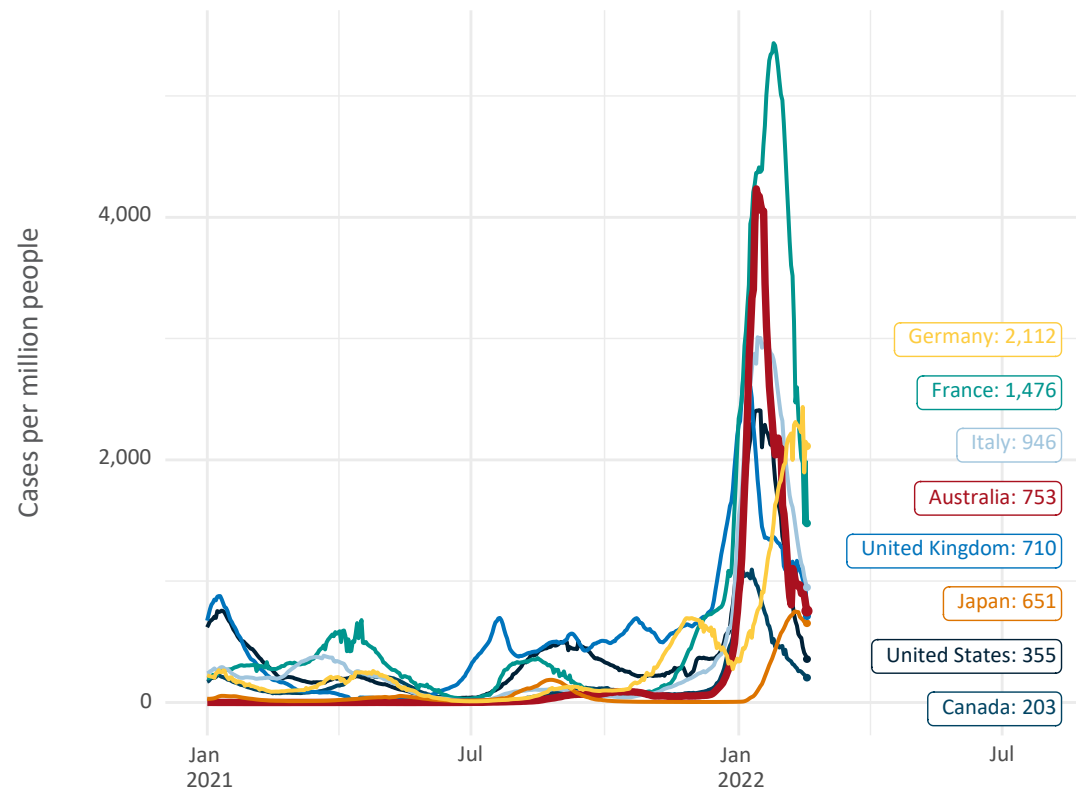


Note: From 15 September 2021, data for Australia includes all doses administered to people 12 and over. Prior to 15 September, data was for 16 and over
Due to data revisions, Singapore has been removed from the chart
Source: Department of Health (Australia), Our World in Data (international)
Latest data: 18 February

International data – COVID-19

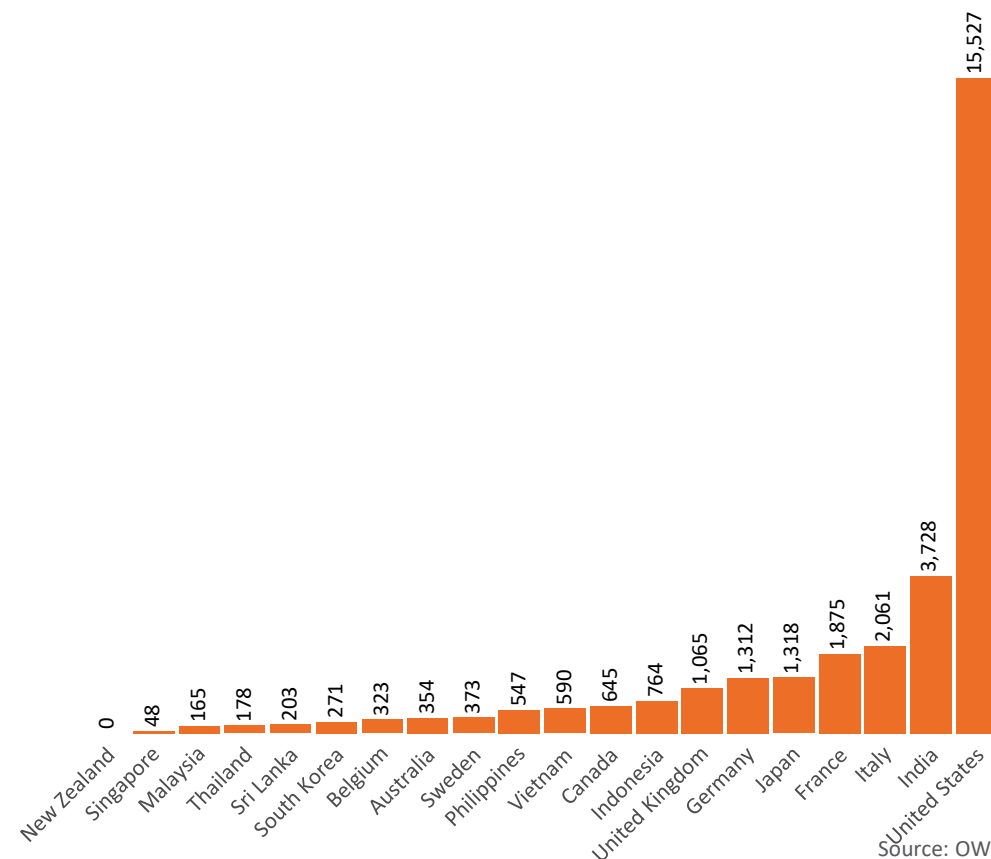
Data as at:
18 Feb 2022

New daily cases per million in 2021, Australia and G7 countries
Smoothed - 7 day average



Source: OWID
Data downloaded: 19 Feb 2022 10:31
Latest data: 17 Feb 2022

COVID-19 deaths in past 7 days - Australia and select countries

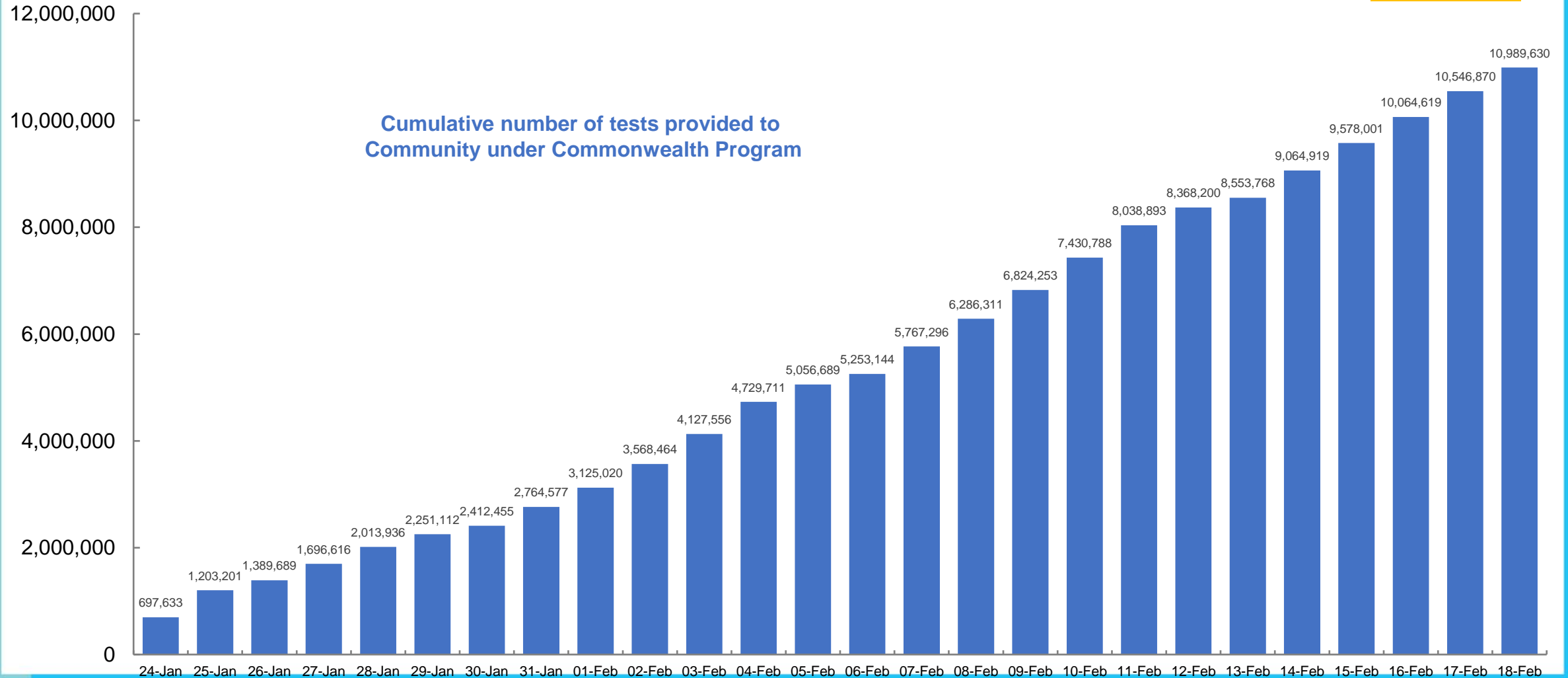


Source: OWID
Data downloaded: 19 Feb 2022 10:31
Latest data: 17 Feb 2022

Data as at
19 Feb 2022

Concessional rapid antigen test program

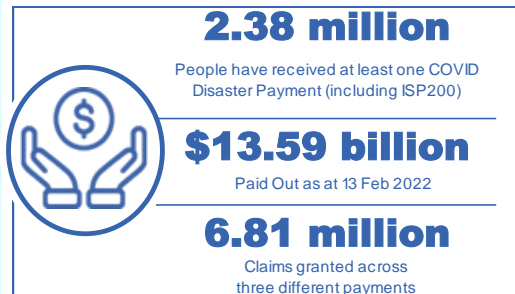
5,412 pharmacies have delivered over **10.9 million rapid antigen tests** to **2,388,588 eligible concession card holders** under the Government's concessional rapid antigen test program.



Pandemic Response Payments

Australia's COVID-19
Vaccine Roadmap

Data as at midnight:
13 Feb 2022
Updated weekly



COVID Disaster Payment:	5.89 million claims received - 2.19 million individuals paid a total of \$12.59 billion.
\$200 Income Support Payment:	353,000 claims received - 183,000 individuals paid a total of \$268.9 million.
Pandemic Leave Disaster Payment:	974,000 claims received - 674,000 individuals paid a total of \$729.6 million.



COVID Disaster Payment

assisting during a
lockdown event in a
Commonwealth hotspot.

Income Support Payment \$200

for income support
recipients who lost at
least 8 hours of work.

Pandemic Leave Disaster Payment

for those who have to
self-isolate, quarantine
or care.

For more information visit:
servicesaustralia.gov.au

COVID-19 DISASTER PAYMENTS

Northern Territory

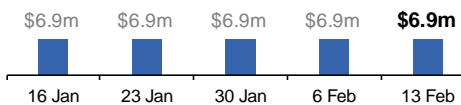
Lockdown (#3) from 16 Nov to 22 Nov
Claiming period ended 27 Dec

**7,500 people have received at least
one COVID Disaster Payment.**

\$6.9m paid out as at 13 Feb 2022.

**\$0 paid in initial payments in the week
ending 13 Feb 2022.**

Cumulative payments made by Territory since
activation on 25 Aug 2021.



Victoria

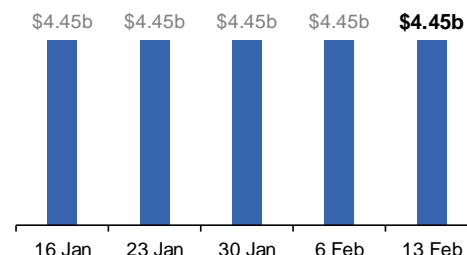
Lockdown (#6) from 6 Aug to 28 Oct
Claiming period ended 9 Dec

**745,000 people have received at least
one COVID Disaster Payment.**

\$4.45b paid out as at 13 Feb 2022.

**\$10,000 paid in initial and reoccurring
payments in the week ending
13 Feb 2022.**

Cumulative payments made by State since
activation on 8 Jun 2021.



New South Wales

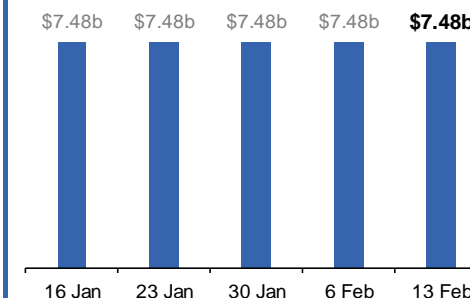
Lockdown from 24 Jun to 10 Oct
Claiming period ended 27 Nov

**1.08m people have received at least
one COVID Disaster Payment.**

\$7.48b paid out as at 13 Feb 2022.

**\$23,000 paid in initial and reoccurring
payments in the week ending
13 Feb 2022.**

Cumulative payments made by State since
activation on 1 Jul 2021.



Australian Capital Territory

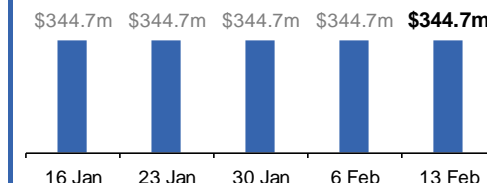
Lockdown from 12 Aug to 14 Oct
Claiming period ended 25 Nov

**65,000 people have received at least
one COVID Disaster Payment.**

\$344.7m paid out as at 13 Feb 2022.

**\$3,000 paid in initial and reoccurring
payments in the week ending
13 Feb 2022.**

Cumulative payments made by Territory since
activation on 20 Aug 2021.



Pandemic Response Payments (continued)

Data as at midnight:
13 Feb 2022
Updated weekly

COVID-19 DISASTER PAYMENTS

Tasmania

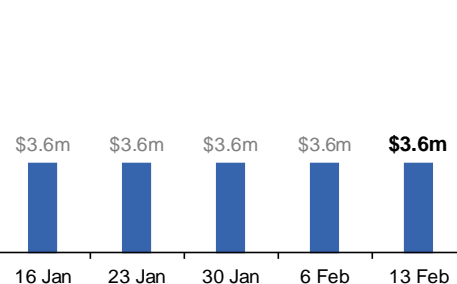
Lockdown from 15 Oct to 18 Oct
Claiming period ended 12 Nov

6,900 people have received at least one COVID Disaster Payment.

\$3.6m paid out as at 13 Feb 2022.

\$0 paid in initial and reoccurring payments in the week ending 13 Feb 2022.

Cumulative payments made by State since activation on 22 Oct 2021.



Queensland

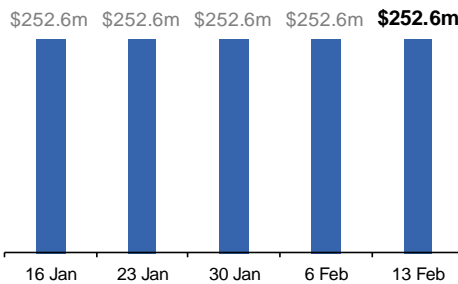
Lockdown from 31 Jul to 11 Aug
Claiming period ended 28 Aug

196,000 people have received at least one COVID Disaster Payment.

\$252.6m paid out as at 13 Feb 2022.

\$0 paid in initial and reoccurring payments in the week ending 13 Feb 2022.

Cumulative payments made by State since activation on 7 Aug 2021.



South Australia

Lockdown from 21 to 27 Jul
Claiming period ended 17 Aug

86,000 people have received at least one COVID Disaster Payment.

\$48.2m paid out as at 13 Feb 2022.

\$0 paid in initial and reoccurring payments in the week ending 13 Feb 2022.

Cumulative payments made by State since activation on 28 Jul 2021.

