




Australian Government
Operation COVID Shield

COVID-19 Vaccine Roll-out

18 February 2022


Data as at:
17 Feb 2022

Total vaccine doses



19,799,178
people have had at least one dose

>95%
of people over the age of 16 have had at least one dose



19,418,011
people are fully vaccinated

94.2%
of people over the age of 16 are fully vaccinated



10,583,499
people over the age of 16 who have received more than two doses



53,010,759 total vaccine doses administered nationally as at 17 February
+151,720 recorded in the last 24 hours

NSW
16,643,523
(+39,199 daily increase)

VIC
14,018,105
(+39,535 daily increase)

QLD
10,126,818
(+25,552 daily increase)

WA
5,566,178
(+26,953 daily increase)

TAS
1,172,310
(+2,949 daily increase)

SA
3,636,478
(+11,031 daily increase)

ACT
1,334,828
(+4,932 daily increase)

NT
512,519
(+1,569 daily increase)

*Administration state breakdown indicates state in which a vaccine was administered
**Overall dose count includes instances of more than two doses per person in a small number of cases.

Source: Australian Immunisation Register

Booster Vaccinations

Data as at:
17 Feb 2022



10,583,499 total people over the age of 16 years old
who have received more than two doses nationally

+129,526 people who have received more than two doses
nationally in the last 24 hours

NSW
3,336,403
(35,913 daily
increase)

VIC
2,878,665
(35,646 daily
increase)

QLD
1,865,712
(21,142 daily
increase)

WA
1,144,661
(20,469 daily
increase)

TAS
229,103
(2,539 daily
increase)

SA
749,725
(9,293 daily
increase)

ACT
223,238
(2,161 daily
increase)

NT
83,833
(1,171 daily
increase)

72,159

doses administered to persons
residing in other territories or with
missing residential information

Source: Australian Immunisation Register

Data as at:
17 Feb 2022

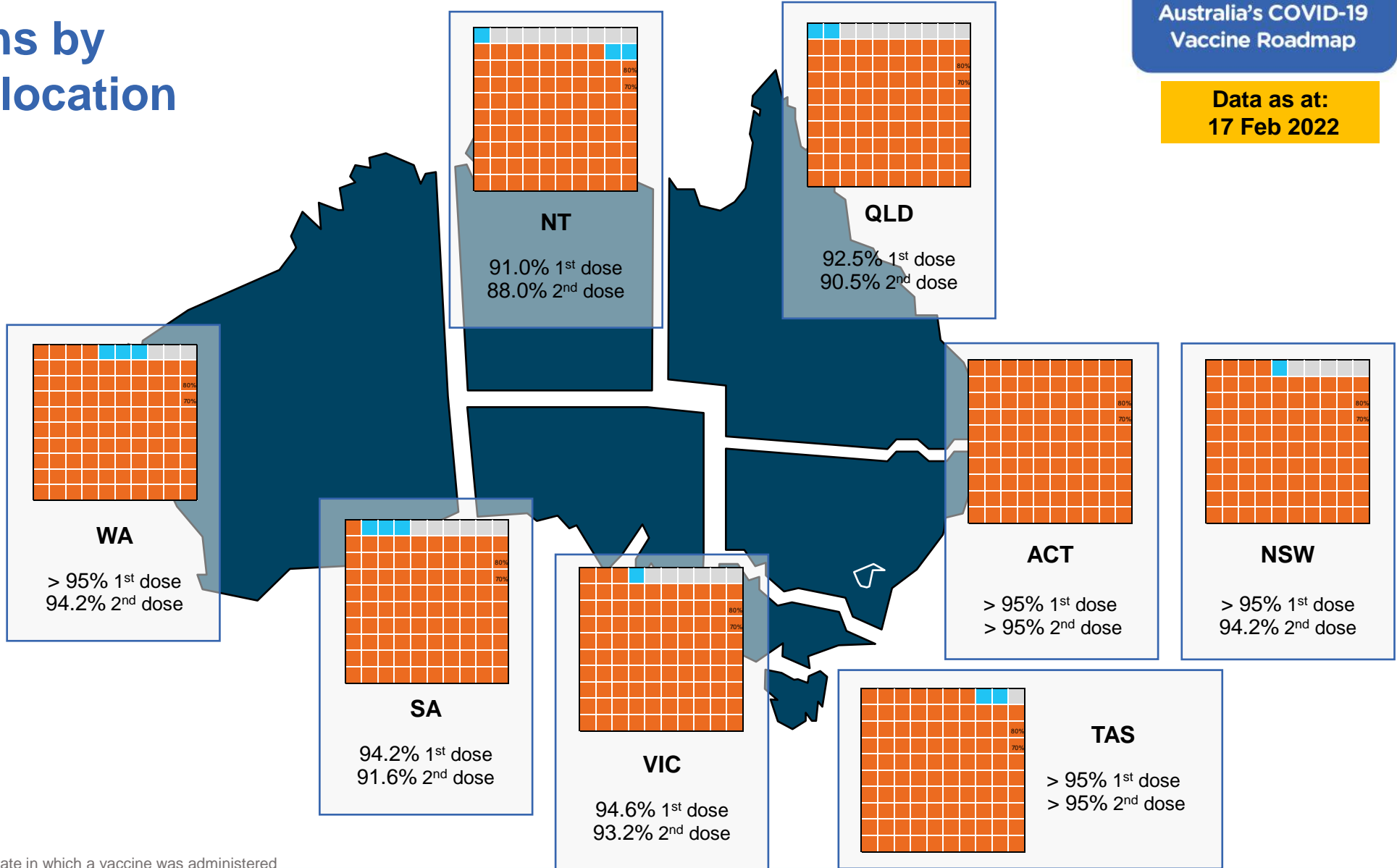
Vaccinations by residential location

First doses

Age	Today	4 weeks ago	8 weeks ago
16+	>95%	>95%	94.5%
50+	>95%	>95%	>95%
70+	>95%	>95%	>95%

Fully vaccinated

Age	Today	4 weeks ago	8 weeks ago
16+	94.2%	93.1%	91.5%
50+	>95%	>95%	>95%
70+	>95%	>95%	>95%



*Residential state may differ from the state in which a vaccine was administered

Commonwealth and Jurisdiction vaccine doses administered

Data as at:
17 Feb 2022



53,010,759 total vaccine doses administered nationally as at 17 February

+ **151,720** recorded in the last 24 hours

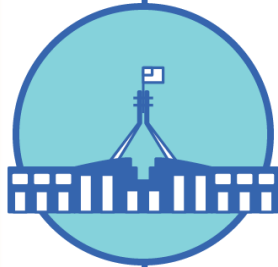


19,864,203

doses administered by state and territory facilities

+ **28,624**

recorded in the last 24 hours



33,146,556

doses administered by commonwealth facilities

+ **123,096**

recorded in the last 24 hours

31,897,935 total vaccine doses administered in primary care settings

1,248,621 total vaccine doses administered in aged care and disability settings

NSW	Jurisdictions	Commonwealth
Cumulative	4,920,788	11,722,735
Daily increase	3,064	36,135

VIC	Jurisdictions	Commonwealth
Cumulative	5,758,413	8,259,692
Daily increase	8,303	31,232

QLD	Jurisdictions	Commonwealth
Cumulative	3,676,414	6,450,404
Daily increase	3,871	21,681

WA	Jurisdictions	Commonwealth
Cumulative	2,281,982	3,284,196
Daily increase	6,547	20,406

TAS	Jurisdictions	Commonwealth
Cumulative	575,599	596,711
Daily increase	25	2,924

SA	Jurisdictions	Commonwealth
Cumulative	1,672,589	1,963,889
Daily increase	2,998	8,033

ACT	Jurisdictions	Commonwealth
Cumulative	678,459	656,369
Daily increase	2,900	2,032

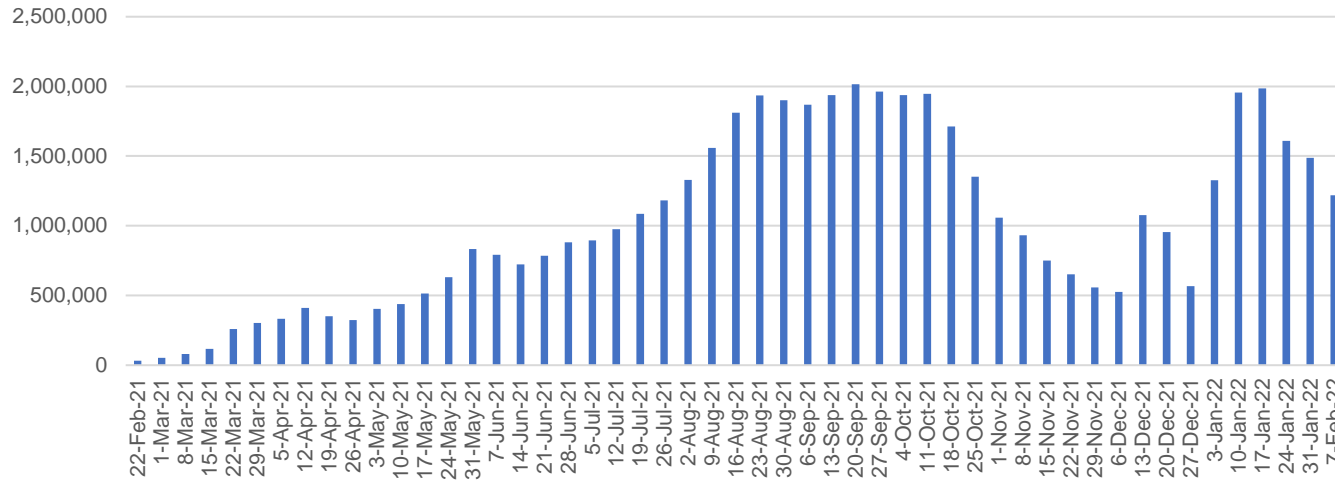
NT	Jurisdictions	Commonwealth
Cumulative	299,959	212,560
Daily increase	916	653

Vaccine milestone charts

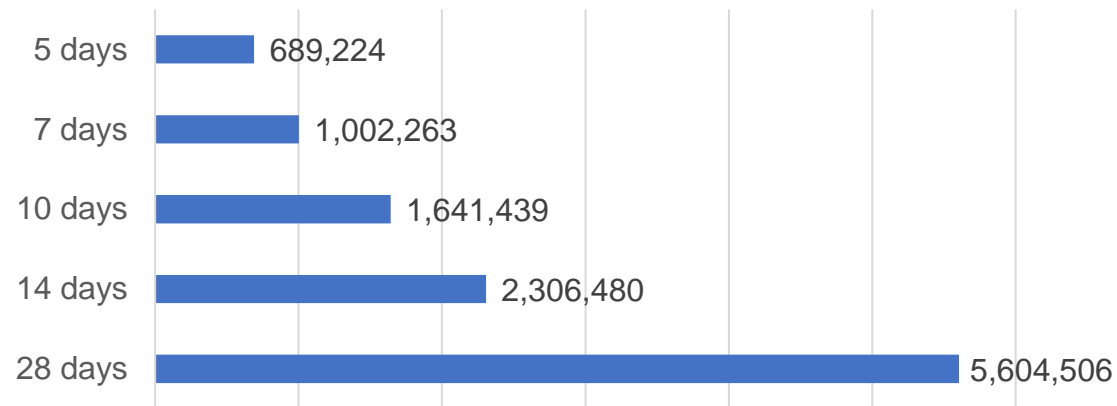
Data as at:
17 Feb 2022

Australia's COVID-19
Vaccine Roadmap

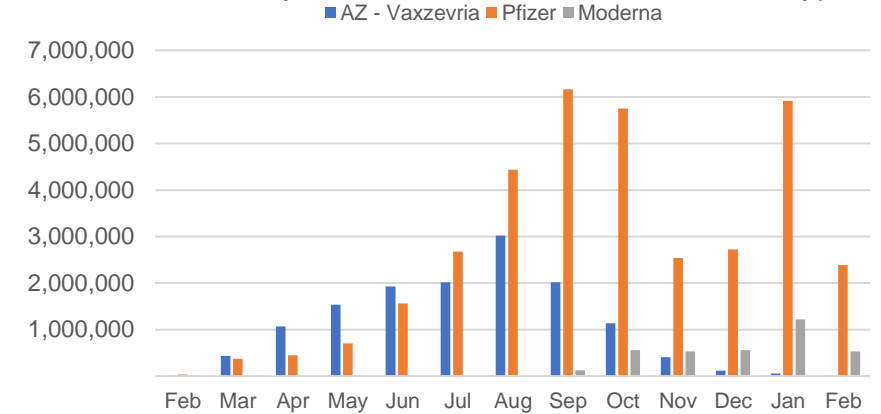
Doses Administered by Week



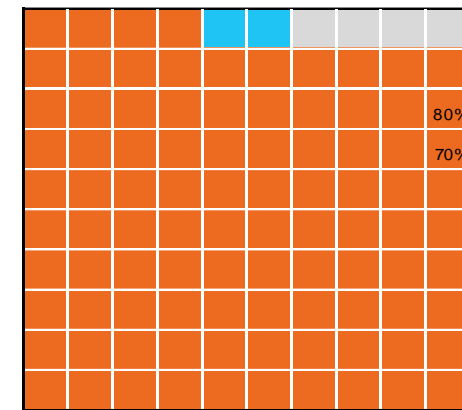
Doses Reported



Doses by administration month and vaccine type



Eligible population percentage coverage



1st dose: >95.0% 2nd dose: 94.2%

*Each square represents 1% of the national population. Squares are filled as milestones are achieved.

*Sourced from the Australian Immunisation Register.

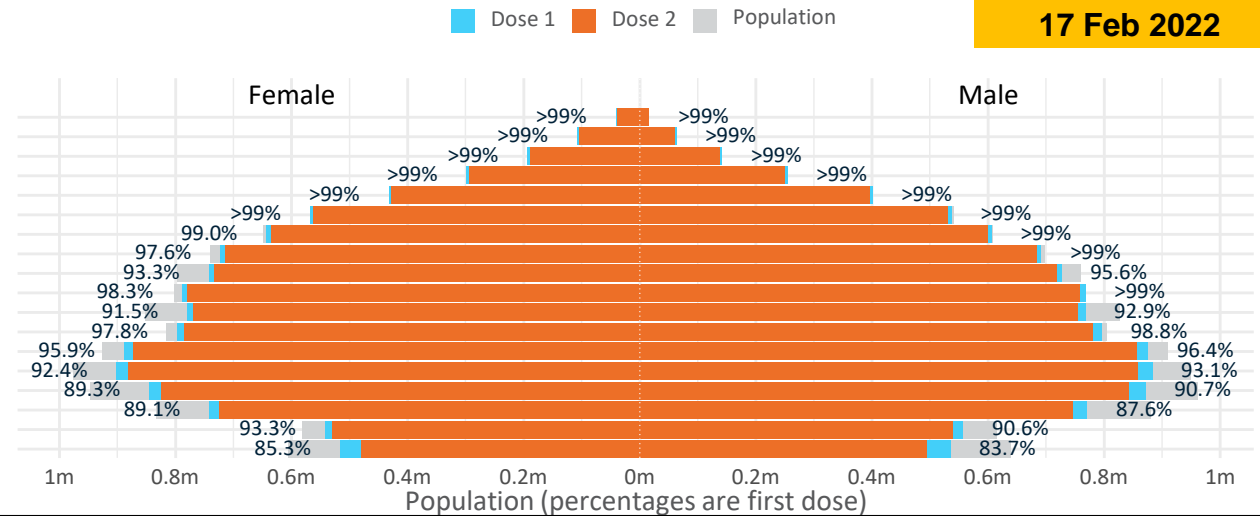
Data as at:
17 Feb 2022

Doses by age and sex

First and second doses by age and sex

	16+	50+	12-15	5-11
Dose 1	96.02% (19,799,178 doses / 20,619,959 people)	>99% (8,750,474 doses / 8,749,703 people)	84.51% (1,051,317 doses / 1,243,990 people)	48.48% (1,103,818 doses / 2,276,638 people)
Dose 2	94.17% (19,418,011 doses / 20,619,959 people)	98.63% (8,629,713 doses / 8,749,703 people)	78.30% (974,056 doses / 1,243,990 people)	0.51% (11,626 doses / 2,276,638 people)

Age	Dose 1	Dose 2
95+	57,860 (>99%)	54,305 (>99%)
90-94	170,991 (>99%)	164,675 (>99%)
85-89	335,220 (>99%)	327,052 (>99%)
80-84	552,811 (>99%)	543,989 (>99%)
75-79	833,848 (>99%)	823,992 (>99%)
70-74	1,106,096 (>99%)	1,093,667 (99.0%)
65-69	1,250,774 (>99%)	1,235,363 (98.2%)
60-64	1,415,587 (98.5%)	1,397,787 (97.3%)
55-59	1,469,899 (94.5%)	1,451,473 (93.3%)
50-54	1,557,388 (>99%)	1,537,410 (98.3%)
45-49	1,548,101 (92.3%)	1,525,630 (91.0%)
40-44	1,595,505 (98.5%)	1,567,206 (96.7%)
35-39	1,768,778 (96.4%)	1,731,651 (94.4%)
30-34	1,792,036 (93.2%)	1,745,281 (90.7%)
25-29	1,726,250 (90.5%)	1,674,813 (87.8%)
20-24	1,518,206 (88.7%)	1,474,842 (86.1%)
16-19	1,099,828 (92.0%)	1,068,875 (89.4%)
12-15	1,051,317 (84.5%)	974,056 (78.3%)

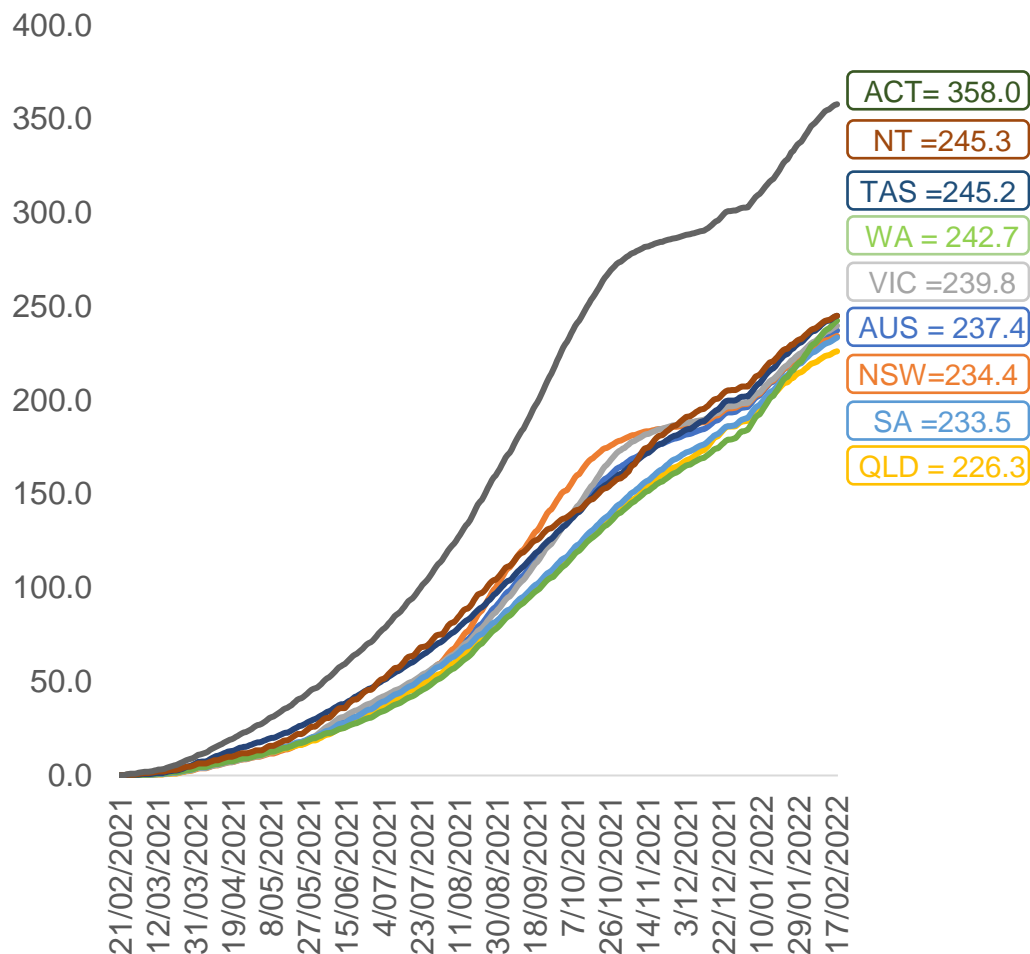


	AUS	ACT	NSW	NT	QLD	SA	TAS	VIC	WA
16 and over - dose 1	19,799,178	350,069	6,280,613	173,383	3,803,493	1,356,917	439,830	5,114,510	2,052,392
16 and over - dose 2	19,418,011	344,957	6,188,021	167,727	3,723,269	1,320,090	428,529	5,042,468	1,992,918
16 and over - population	20,619,959*	344,037	6,565,651	190,571	4,112,707	1,440,400	440,172	5,407,574	2,114,978
16 and over % with dose 1	96.02%	>99%	95.66%	90.98%	92.48%	94.20%	>99%	94.58%	97.04%
16 and over % with dose 2	94.17%	>99%	94.25%	88.01%	90.53%	91.65%	97.35%	93.25%	94.23%
5 to 11 - dose 1	1,103,818	30,493	331,607	12,179	200,175	79,245	27,411	306,175	109,814
5 to 11 - dose 2	11,626	181	4,842	88	1,966	311	52	3,686	425
5 to 11 - population	2,276,638	39,789	716,460	24,750	478,731	148,816	45,033	578,499	244,154
5 to 11 % with dose 1	48.48%	76.64%	46.28%	49.21%	41.81%	53.25%	60.87%	52.93%	44.98%
5 to 11 % with dose 2	0.51%	0.45%	0.68%	0.36%	0.41%	0.21%	0.12%	0.64%	0.17%
12 to 15 - dose 1	1,051,317	20,072	326,250	10,865	207,534	68,005	22,812	276,008	110,453
12 to 15 - dose 2	974,056	19,194	308,138	9,564	189,505	62,471	20,867	261,399	95,012
12 to 15 - population	1,243,990	19,693	390,330	13,060	270,146	82,747	26,308	308,611	132,869
12 to 15 % with dose 1	84.51%	>99%	83.58%	83.19%	76.82%	82.18%	86.71%	89.44%	83.13%
12 to 15 % with dose 2	78.30%	97.47%	78.94%	73.23%	70.15%	75.50%	79.32%	84.70%	71.51%

*National population will not equal sum of listed jurisdictions due to a small number of people counted in national population residing in some 'other' territories. Sum of state doses will not add to national total as some records are unable to be geocoded to a State or Territory.
Doses sourced from Australian Immunisation Register, population from ABS ERP June 2020

Vaccinations by location

Cumulative total doses administered vs eligible state populations*

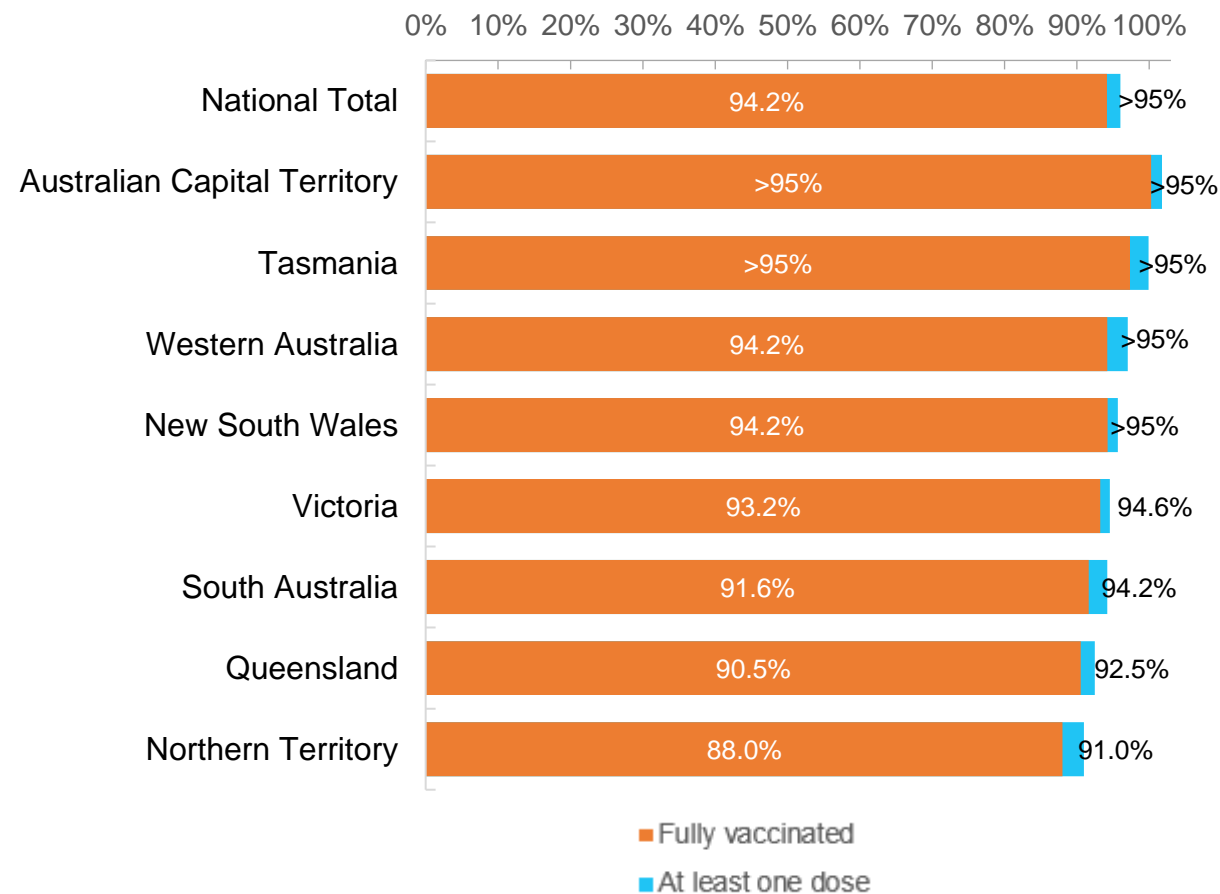


*Not an indication of percentage vaccinated, numbers will exceed 100 due to multiple doses required per person of the population. All doses are included for those aged 12 and above, and are based on vaccination provider location.

Data as at:
17 Feb 2022

Australia's COVID-19
Vaccine Roadmap

First and Second Doses by residential location



Aboriginal and Torres Strait Islander peoples

Number of people vaccinated

Data as at:
15 Feb 2022
Updated weekly

Australia's COVID-19
Vaccine Roadmap



429,831

people over the age of 16
have had at least one dose

82.7%

of people over the age of 16
have had at least one dose



402,335

people over the age of 16
are fully vaccinated

77.4%

of people over the age of 16 are
fully vaccinated



**47,215
(66.6%)**

people aged 12-15 years
have had at least one dose

175 Aboriginal community controlled health services (ACCHS)

0#	50	27	43	12	3	21	19
ACT	NSW	NT	QLD	SA	TAS	VIC	WA

Medicare Address State ^{##}	Individuals Dose 1	Individuals Dose 1 %	Individuals Dose 2	Individuals Dose 2 %
Australian Capital Territory	4,870	91.3%	4,731	88.7%
New South Wales	134,909	86.5%	131,405	84.2%
Northern Territory	41,631	88.2%	38,436	81.4%
Queensland	113,396	80.0%	105,656	74.5%
South Australia	19,495	78.1%	17,637	70.7%
Tasmania	14,144	87.8%	13,533	84.0%
Victoria	35,147	89.1%	34,208	86.8%
Western Australia	49,922	79.3%	42,743	67.9%
Unknown/Other Territories	16,317	62.8%	13,986	53.9%
Totals	429,831	82.7%	402,335	77.4%

Source: Australian Immunisation Register

*Identifying as Aboriginal and Torres Strait Islander is optional and the estimated population may be under reported.

**Includes all Aboriginal and Torres Strait Islander peoples who have received a vaccination, not limited to those administered in an ACCHS setting

#ACCHS in the ACT are currently operating as a Commonwealth Vaccine Clinics so not included to avoid double counting

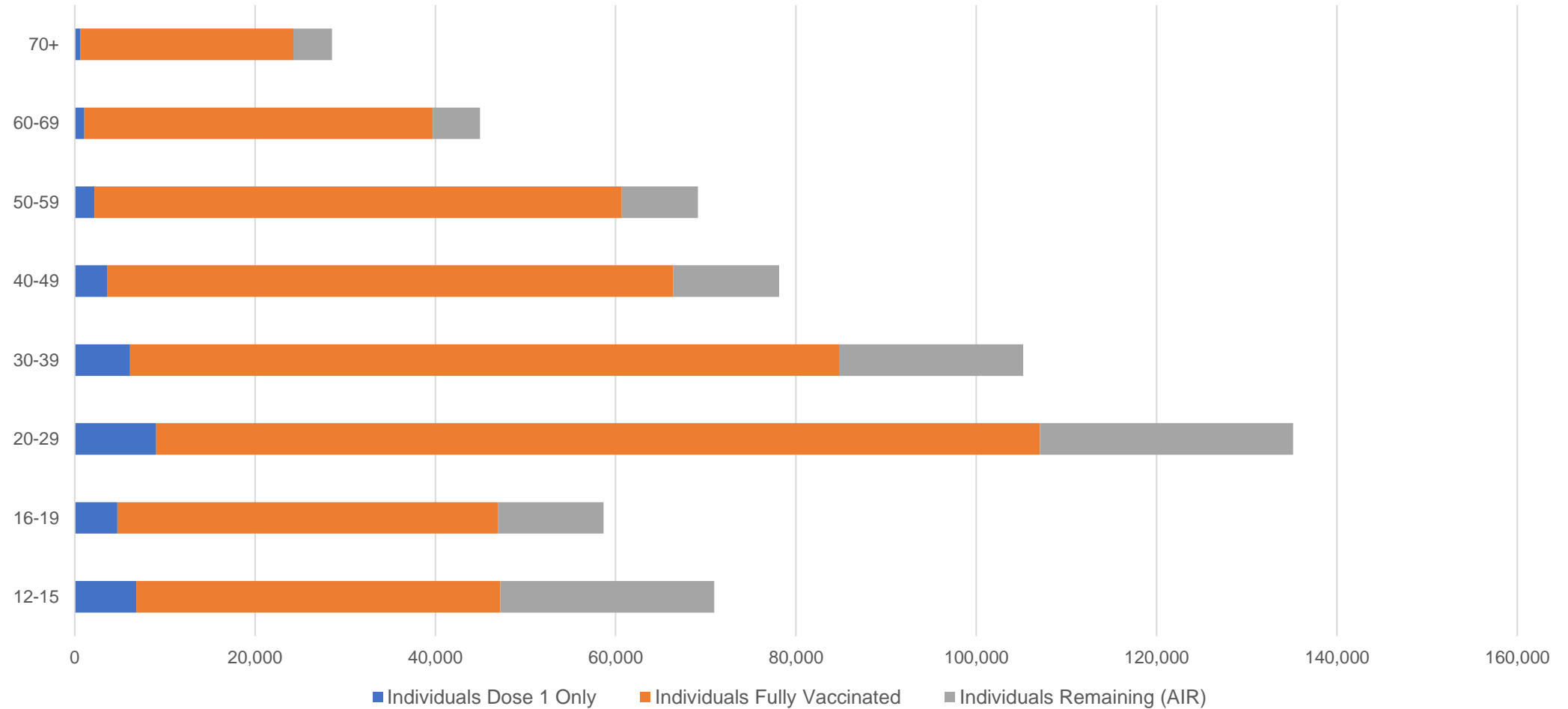
##The above table includes all identified Aboriginal and Torres Strait Islander people who are aged 16 and above by their state of residence.

Aboriginal and Torres Strait Islander peoples

Number of people vaccinated by age

Data as at:
15 Feb 2022
Updated weekly

Australia's COVID-19
Vaccine Roadmap



Source: Australian Immunisation Register

Commonwealth primary care

Data as at:
17 Feb 2022

Australia's COVID-19
Vaccine Roadmap



Primary care vaccine administration sites

5,760	128	175	3,543
GPs	CVCs	ACCHS	Pharmacies



31,897,935 total vaccine doses administered
primary care settings as at 17 February
+ 121,755 recorded in the last 24 hours

Primary care vaccinations by provider type

	Doses administered	Daily increase	7 day increase
General Practice* includes other Commonwealth	26,216,326	79,438	500,430
Pharmacy	5,681,609	42,317	256,567

NSW
11,188,107
(+36,024 daily increase)

VIC
7,958,714
(+30,344 daily increase)

QLD
6,176,405
(+21,458 daily increase)

WA
3,164,643
(+20,039 daily increase)

TAS
578,404
(+2,881 daily increase)

SA
1,887,865
(+7,997 daily increase)

ACT
507,043
(+1,715 daily increase)

NT
191,918
(+677 daily increase)

244,836

doses administered to persons
residing in other territories or with
missing residential information

*General practice includes Commonwealth Vaccination Clinics, Aboriginal Community Health Centres, Royal Flying Doctor Service and other Commonwealth vaccination facilities

Source: Australian Immunisation Register

Commonwealth aged care and disability doses administered

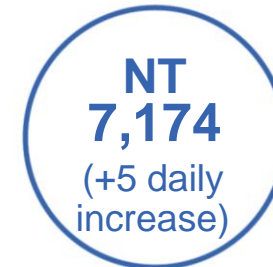
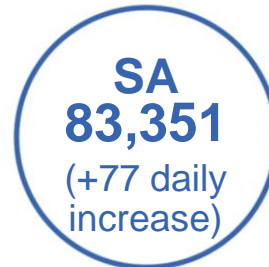
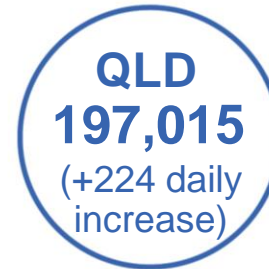
Data as at:
17 Feb 2022



1,248,621 (+ 1,341 last 24 hours)

Total vaccine doses administered in aged care and disability facilities as at 17 February

Number of doses administered as part of the Commonwealth aged and disability care rollout



31,247

doses administered to persons residing in other territories or with missing residential information

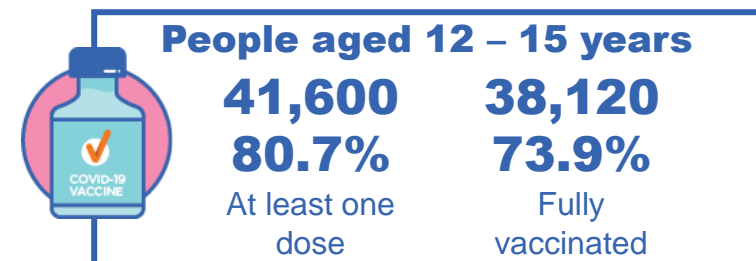
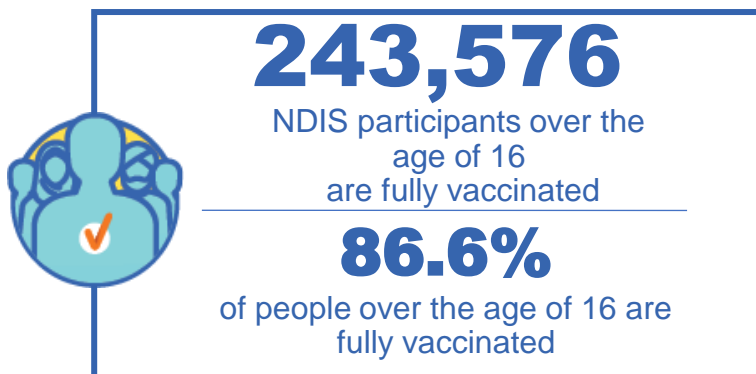
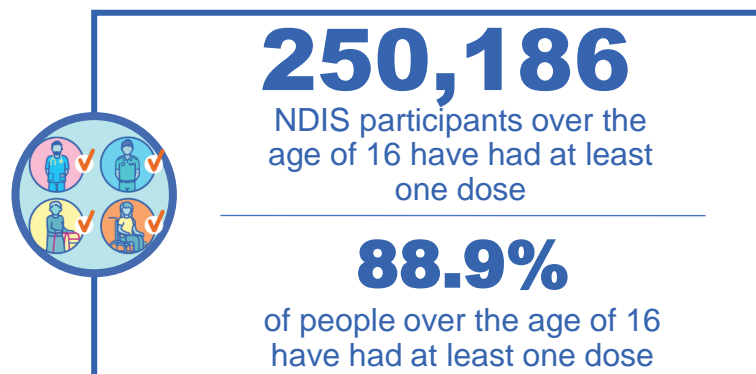
*Sourced from the Australian Immunisation Register. Includes all persons vaccinated at participating residential aged care, disability and related industry settings.
**State level breakdown indicates the residential location and may not align to the state in which the vaccination occurred.

Source: Australian Immunisation Register

National Disability Insurance Scheme (NDIS) reported vaccinations

Data as at:
17 February 2022
Updated weekly

Australia's COVID-19
Vaccine Roadmap



NDIS participant vaccinations

	People aged 16+ with at least one dose	People aged 16+ fully vaccinated	% People aged 16+ with at least one dose	% People aged 16+ fully vaccinated
ACT	4,785	4,714	91.0%	89.7%
NSW	77,542	76,177	89.4%	87.8%
NT	2,171	2,062	80.3%	76.2%
QLD	48,996	47,592	88.1%	85.6%
SA	20,307	19,544	86.6%	83.3%
TAS	6,252	6,023	88.8%	85.6%
VIC	66,808	65,484	90.1%	88.3%
WA	23,325	21,980	88.8%	83.6%
National	250,186	243,576	88.9%	86.6%

Source: Linkage between National Disability Insurance Agency data and the Australian Immunisation Register. Total NDIS participant numbers as at 17th October. Australian Immunisation Register data as at 16 February. Includes all participants regardless of residence type.

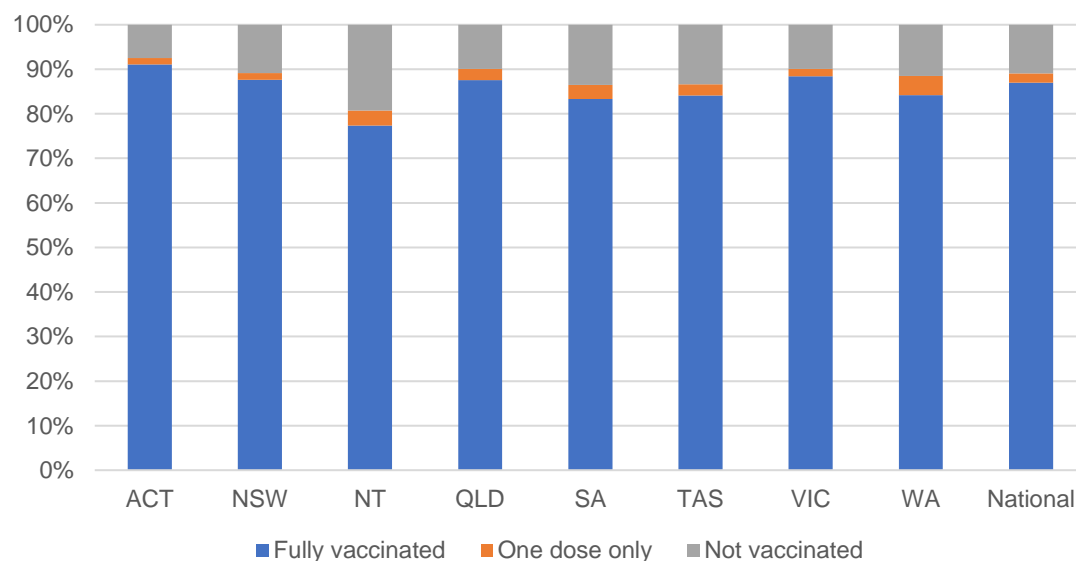
National Disability Insurance Scheme (NDIS) reported vaccinations

Data as at:
17 February 2022
Updated Weekly

Australia's COVID-19
Vaccine Roadmap

NATIONAL	Total people with at least one dose	People fully vaccinated	Total number of individuals in cohort	% People with at least one dose	% People fully vaccinated
NDIS participants living in disability accommodation	20,386	19,920	22,800	89.4%	87.4%

NDIS participants in disability and aged care accommodation



Source: Linkage between National Disability Insurance Agency data and the Australian Immunisation Register. Includes participants residing in disability accommodation only.
Source: Total NDIS participant numbers as at 17th October. Participant data as at 15 February. Australian Immunisation Register data as at 16 February. Worker data as at 17 February.

NDIS workforce vaccinations

	NDIS workers with at least one dose	NDIS workers fully vaccinated	% NDIS workers with at least one dose	% NDIS workers fully vaccinated
NSW	120,986	120,467	97.8%	97.3%
VIC	107,032	106,261	98.0%	97.3%
QLD	66,840	66,049	96.7%	95.5%
WA	31,941	30,735	97.6%	94.0%
SA	34,443	33,560	98.2%	95.7%
TAS	10,612	10,470	99.5%	98.2%
ACT	3,474	3,465	99.5%	99.3%
NT	3,244	3,201	99.4%	98.1%
TOTAL	378,572	374,208	97.7%	96.6%

Source: the NDIS Commission has established a requirement for registered NDIS providers who provide intensive disability support services to report on the vaccination status of workers they employ, or otherwise engage, to deliver NDIS-funded supports and services, and who are required to be vaccinated in accordance with in-force state and territory public health orders. The statistics reflect data reported to the NDIS Commission by registered NDIS providers and should be considered indicative and subject to change

Note: Some registered NDIS providers are yet to report on the vaccination status of their workforce. The NDIS Commission is working with those providers around reporting requirements.

Remaining workers not included include those exempt from vaccination requirements, workers whose vaccination status is not yet verified by the provider (such as workers on leave) and provider reporting anomalies.

Data as at: 17 Feb 2022

Residential aged care vaccination rollout

Residential aged care facilities status

100%

Commonwealth facilities visited (2,541 planned sites)

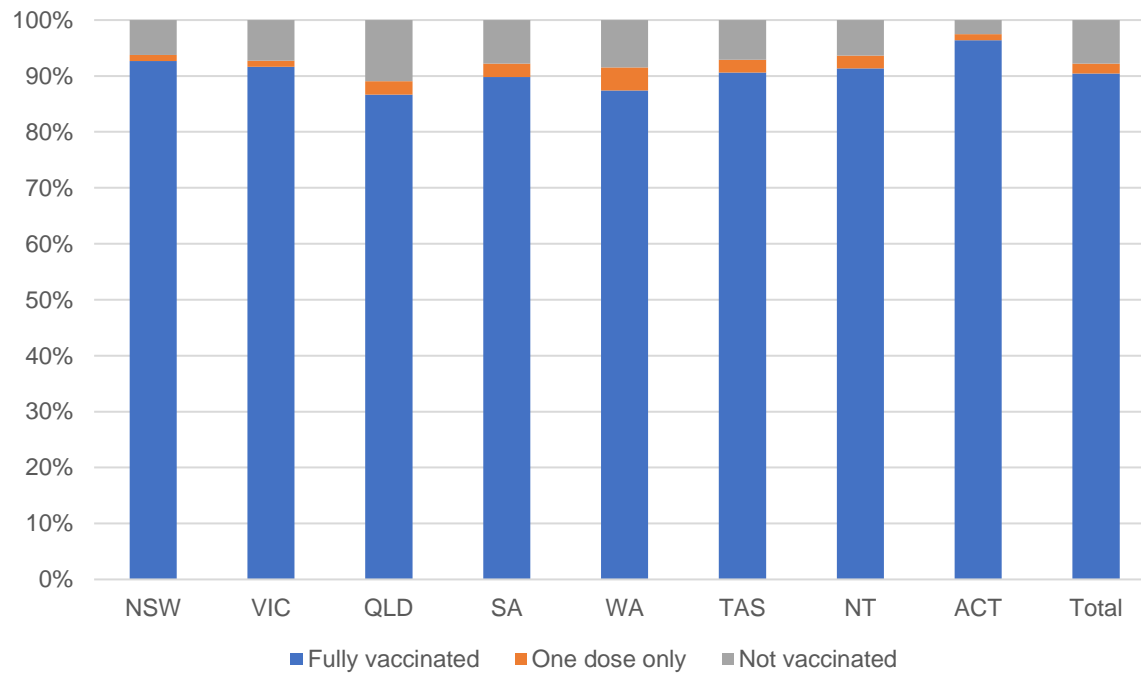
171,945

People fully vaccinated

175,350

People with at least one dose

Aged care resident vaccinations



Aged care worker vaccinations

Jurisdictions	Total workers with at least one dose	Workers fully vaccinated	% Workers with at least one dose	% Workers fully vaccinated
NSW	78,754	78,727	99.2%	99.2%
VIC	68,945	68,944	98.5%	98.5%
QLD	48,513	48,468	98.2%	98.1%
SA	27,024	26,996	98.6%	98.5%
WA	23,830	23,827	99.4%	99.4%
TAS	7,646	7,646	100.0%	100.0%
NT	874	874	100.0%	100.0%
ACT	3,027	3,027	100.0%	100.0%
Total	258,613	258,509	98.8%	98.8%

Source: My Aged Care Portal vaccination progress

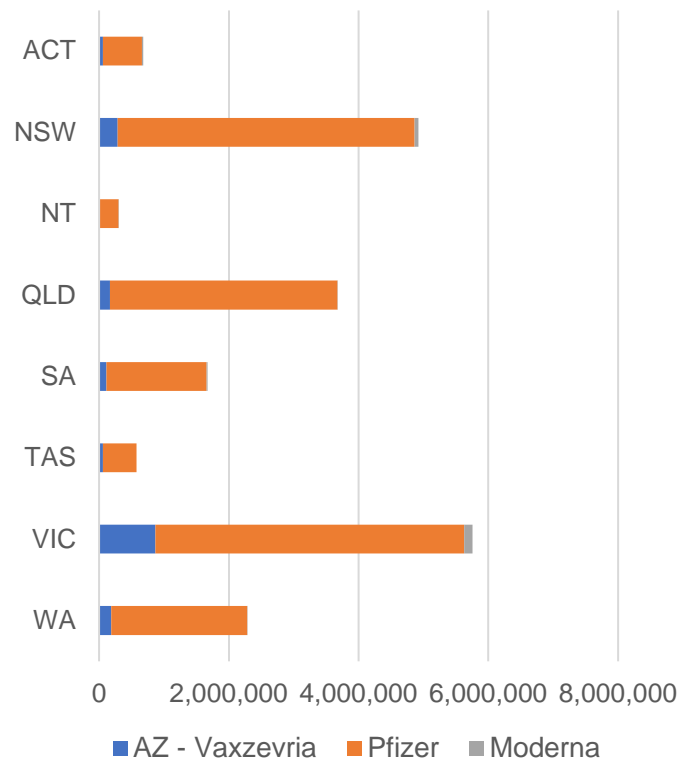
*Status updates are provided by facilities at least once per week. Reporting is updated Monday to Friday to encompass different facility updates being made on different days.

Data is sourced directly from Aged Care Service Providers and is not drawn or closely aligned with data from AIR due to inconsistencies and potential lags in uploading of records.

Data as at:
17 Feb 2022

Jurisdiction administered

Total vaccine doses administered in State and Territory clinics as at 17 February



19,864,203 total vaccine doses administered in State and Territory clinics as at 17 February
 + **28,624** recorded in the last 24 hours
 + **238,029** recorded in the last 7 days

NSW
4,920,788
 (+3,064 daily increase)

VIC
5,758,413
 (+8,303 daily increase)

QLD
3,676,414
 (+3,871 daily increase)

WA
2,281,982
 (+6,547 daily increase)

TAS
575,599
 (+25 daily increase)

SA
1,672,589
 (+2,998 daily increase)

ACT
678,459
 (+2,900 daily increase)

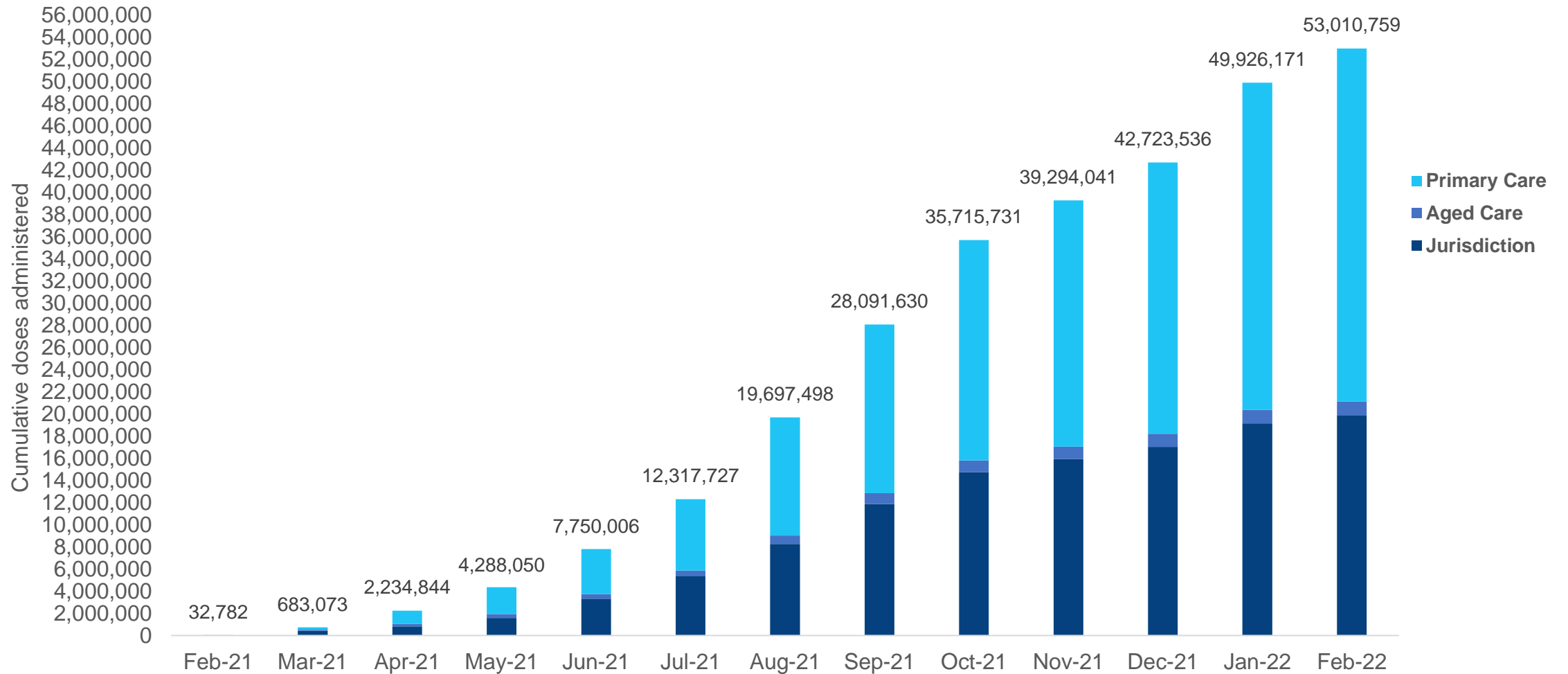
NT
299,959
 (+916 daily increase)

*Sourced from the Australian Immunisation Register. Numbers are calculated as difference in daily cumulative reported numbers to allow for historical corrections.

Source: Australian Immunisation Register

Data as at:
17 Feb 2022

Cumulative doses administered by channel



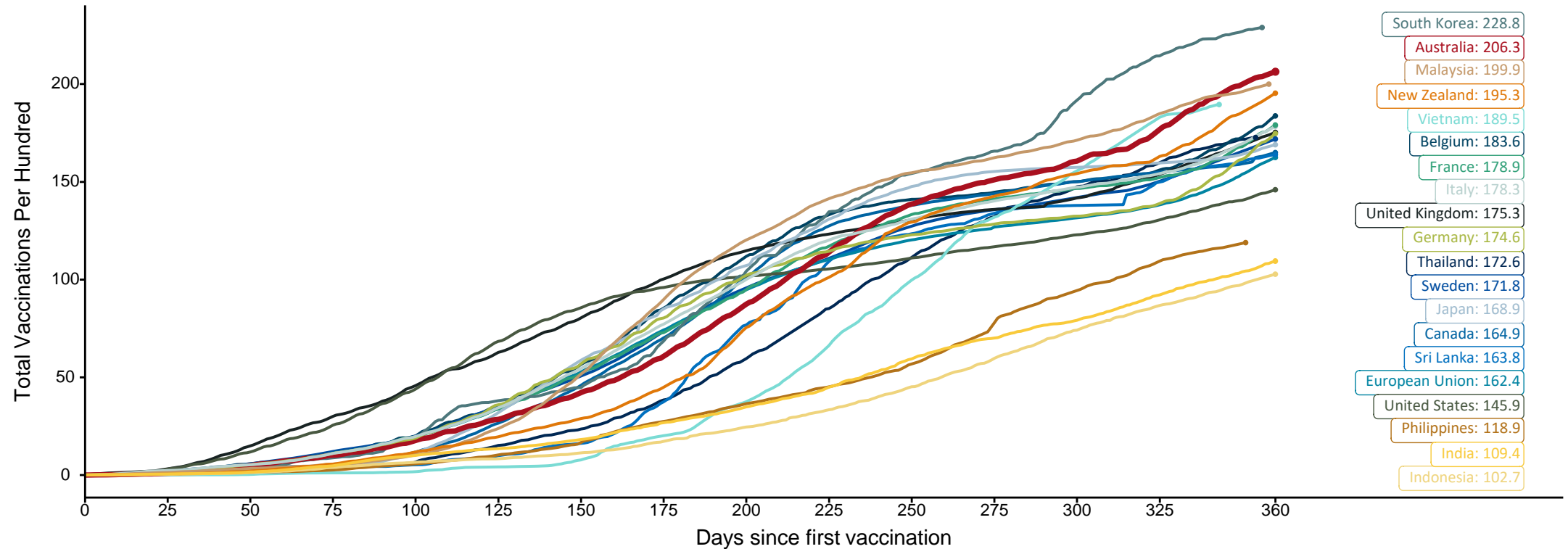
Source: Australian Immunisation Register

Doses at equivalent stages of rollout (Day 360)

Data as at:
17 Feb 2022

The x-axis is truncated at the length of Australia's vaccination program. Countries with intermittent reporting have had their doses per 100 imputed to Australia's current stage of rollout. Israel excluded as it is beyond scale of the graph

Cumulative doses administered (17 Feb): **53,010,759**

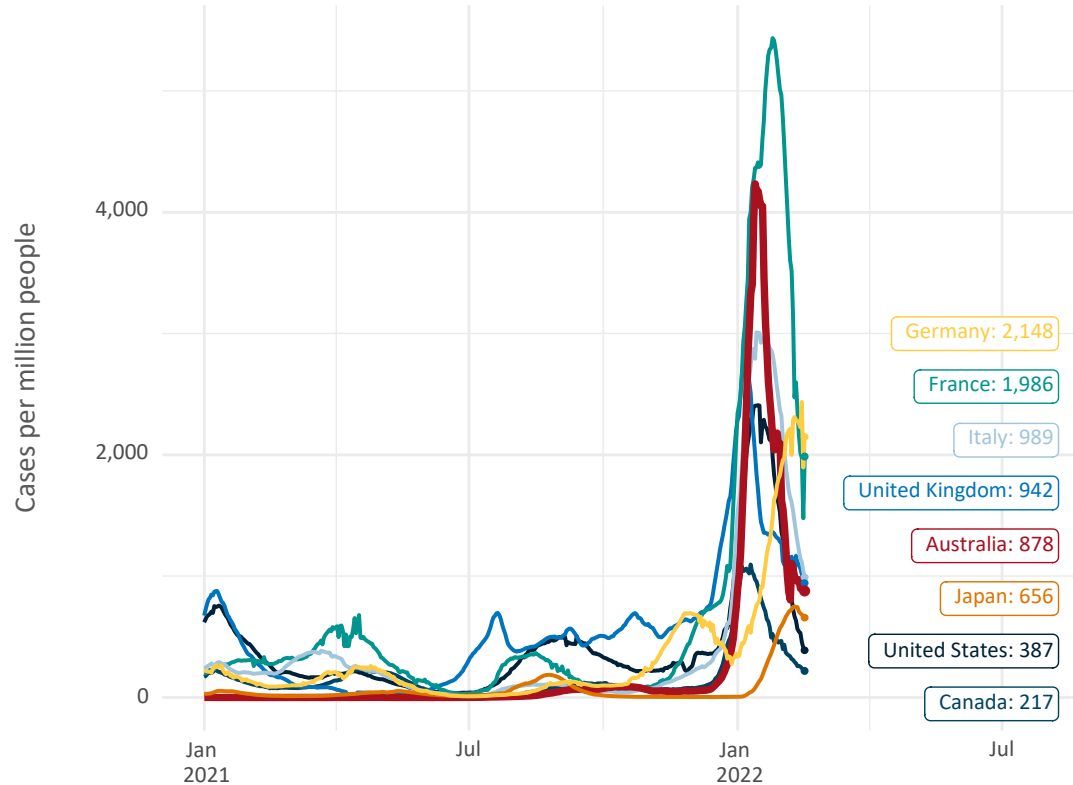


Note: From 15 September 2021, data for Australia includes all doses administered to people 12 and over. Prior to 15 September, data was for 16 and over
 Due to data revisions, Singapore has been removed from the chart
 Source: Department of Health (Australia), Our World in Data (international)
 Latest data: 17 February

Data as at:
17 Feb 2022

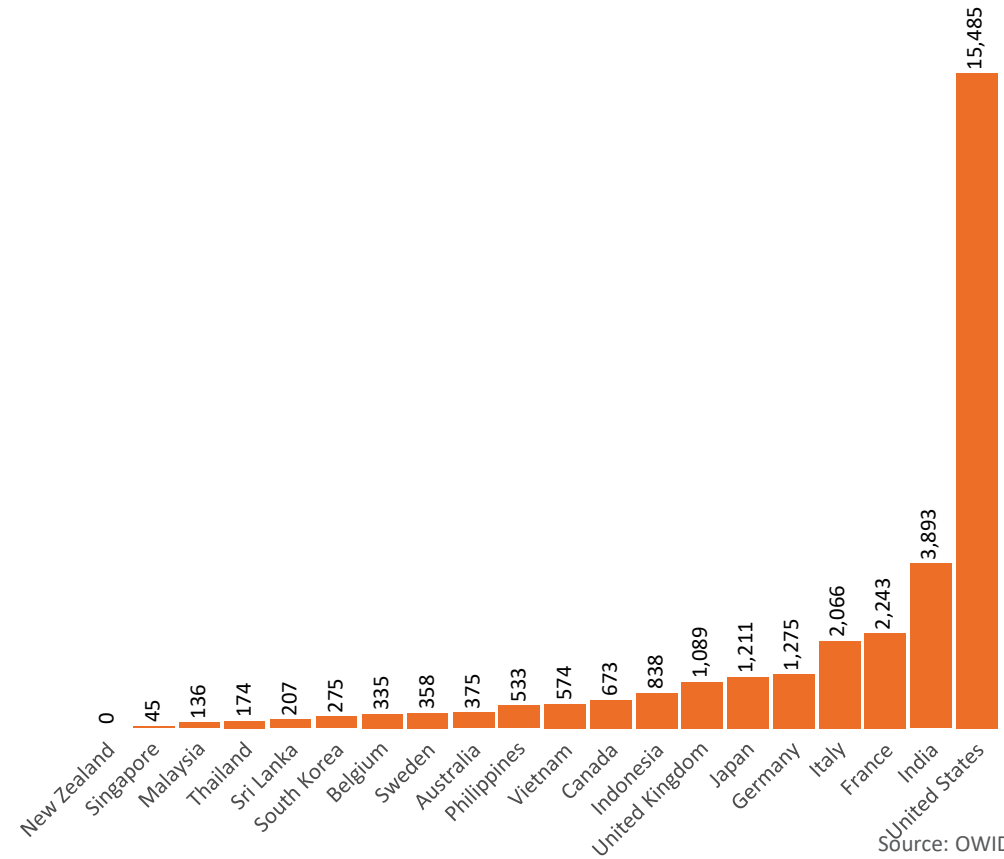
International data – COVID-19

New daily cases per million in 2021, Australia and G7 countries
Smoothed - 7 day average



Source: OWID
Data downloaded: 18 Feb 2022 08:20
Latest data: 16 Feb 2022

COVID-19 deaths in past 7 days - Australia and select countries

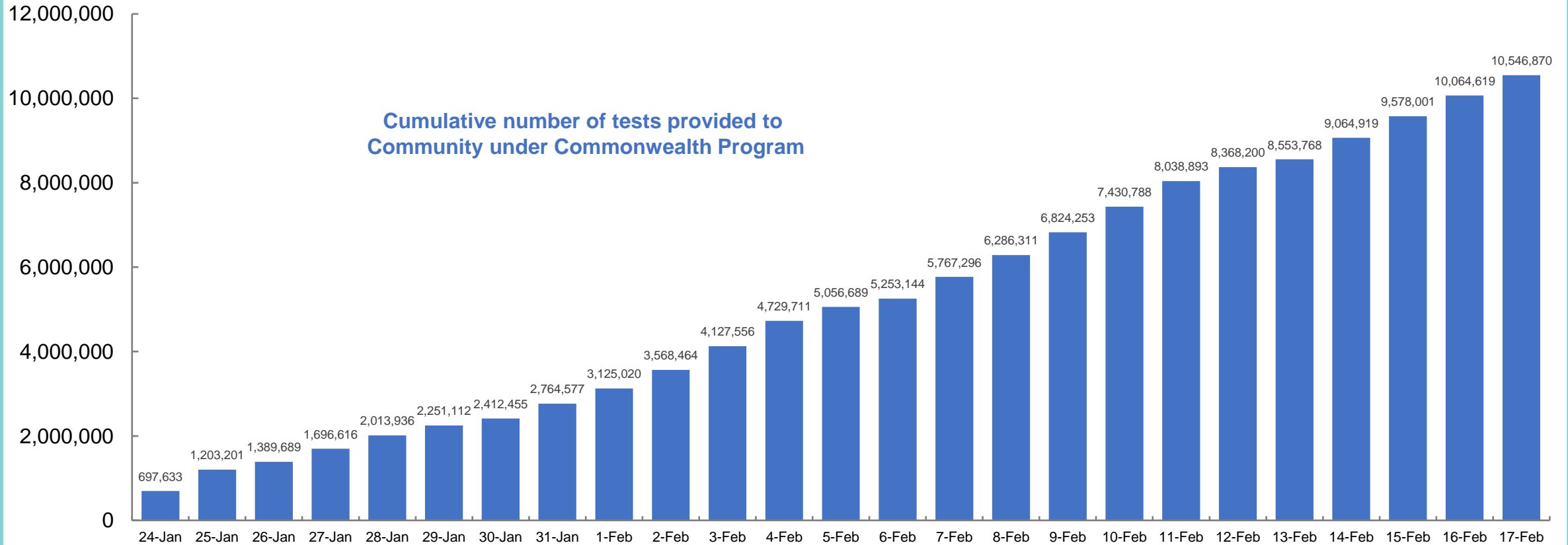


Source: OWID
Data downloaded: 18 Feb 2022 08:20
Latest data: 16 Feb 2022

Concessional rapid antigen test program


More than **5,000 pharmacies** have delivered over **10.5 million rapid antigen tests** to **2,299,649 eligible concession card holders** under the Government's concessional rapid antigen test program.

Data as at
17 Feb 2022



Data as at midnight:
13 Feb 2022
Updated weekly

Pandemic Response Payments



2.38 million
People have received at least one COVID Disaster Payment (including ISP200)

\$13.59 billion
Paid Out as at 13 Feb 2022


6.81 million
Claims granted across three different payments



92%
of Claims Received Digitally



COVID Disaster Payment:	5.89 million claims received - 2.19 million individuals paid a total of \$12.59 billion.
\$200 Income Support Payment:	353,000 claims received - 183,000 individuals paid a total of \$268.9 million.
Pandemic Leave Disaster Payment:	974,000 claims received - 674,000 individuals paid a total of \$729.6 million.



THREE PAYMENTS AVAILABLE

COVID Disaster Payment
assisting during a lockdown event in a Commonwealth hotspot.

Income Support Payment \$200
for income support recipients who lost at least 8 hours of work.

Pandemic Leave Disaster Payment
for those who have to self-isolate, quarantine or care.

For more information visit:
servicesaustralia.gov.au

COVID-19 DISASTER PAYMENTS

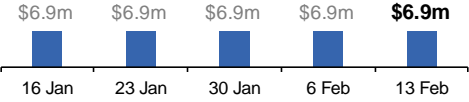
Northern Territory
Lockdown (#3) from 16 Nov to 22 Nov
Claiming period ended 27 Dec

7,500 people have received at least one COVID Disaster Payment.

\$6.9m paid out as at 13 Feb 2022.

\$0 paid in initial payments in the week ending 13 Feb 2022.

Cumulative payments made by Territory since activation on 25 Aug 2021.



Date	Cumulative Payments
16 Jan	\$6.9m
23 Jan	\$6.9m
30 Jan	\$6.9m
6 Feb	\$6.9m
13 Feb	\$6.9m

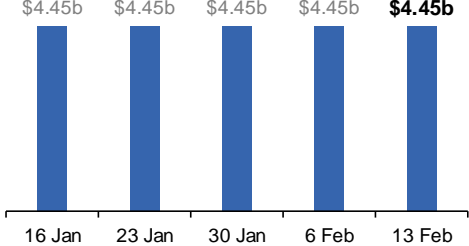
Victoria
Lockdown (#6) from 6 Aug to 28 Oct
Claiming period ended 9 Dec

745,000 people have received at least one COVID Disaster Payment.

\$4.45b paid out as at 13 Feb 2022.

\$10,000 paid in initial and reoccurring payments in the week ending 13 Feb 2022.

Cumulative payments made by State since activation on 8 Jun 2021.



Date	Cumulative Payments
16 Jan	\$4.45b
23 Jan	\$4.45b
30 Jan	\$4.45b
6 Feb	\$4.45b
13 Feb	\$4.45b

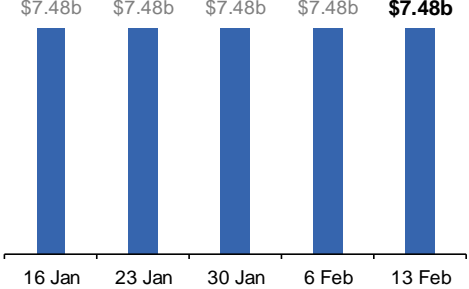
New South Wales
Lockdown from 24 Jun to 10 Oct
Claiming period ended 27 Nov

1.08m people have received at least one COVID Disaster Payment.

\$7.48b paid out as at 13 Feb 2022.

\$23,000 paid in initial and reoccurring payments in the week ending 13 Feb 2022.

Cumulative payments made by State since activation on 1 Jul 2021.



Date	Cumulative Payments
16 Jan	\$7.48b
23 Jan	\$7.48b
30 Jan	\$7.48b
6 Feb	\$7.48b
13 Feb	\$7.48b

Australian Capital Territory
Lockdown from 12 Aug to 14 Oct
Claiming period ended 25 Nov

65,000 people have received at least one COVID Disaster Payment.

\$344.7m paid out as at 13 Feb 2022.

\$3,000 paid in initial and reoccurring payments in the week ending 13 Feb 2022.

Cumulative payments made by Territory since activation on 20 Aug 2021.



Date	Cumulative Payments
16 Jan	\$344.7m
23 Jan	\$344.7m
30 Jan	\$344.7m
6 Feb	\$344.7m
13 Feb	\$344.7m

Data as at midnight:
13 Feb 2022
Updated weekly

Pandemic Response Payments (continued)

COVID-19 DISASTER PAYMENTS

Tasmania

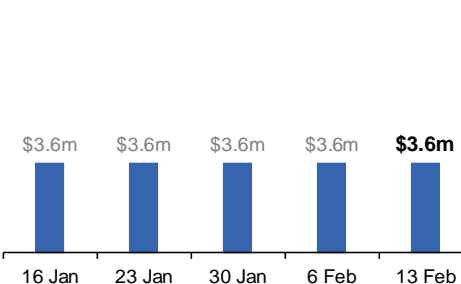
Lockdown from 15 Oct to 18 Oct
Claiming period ended 12 Nov

6,900 people have received at least one COVID Disaster Payment.

\$3.6m paid out as at 13 Feb 2022.

\$0 paid in initial and reoccurring payments in the week ending 13 Feb 2022.

Cumulative payments made by State since activation on 22 Oct 2021.



Queensland

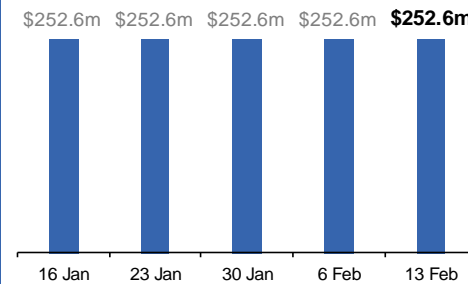
Lockdown from 31 Jul to 11 Aug
Claiming period ended 28 Aug

196,000 people have received at least one COVID Disaster Payment.

\$252.6m paid out as at 13 Feb 2022.

\$0 paid in initial and reoccurring payments in the week ending 13 Feb 2022.

Cumulative payments made by State since activation on 7 Aug 2021.



South Australia

Lockdown from 21 to 27 Jul
Claiming period ended 17 Aug

86,000 people have received at least one COVID Disaster Payment.

\$48.2m paid out as at 13 Feb 2022.

\$0 paid in initial and reoccurring payments in the week ending 13 Feb 2022.

Cumulative payments made by State since activation on 28 Jul 2021.

