



Australian Government
Operation COVID Shield

COVID-19 Vaccine Roll-out

17 February 2022

Data as at:
16 Feb 2022

Total vaccine doses



52,859,039 total vaccine doses administered nationally as at 16 February
+157,935 recorded in the last 24 hours



19,793,600

people have had at least one dose

>95%

of people over the age of 16 have had at least one dose



19,409,879

people are fully vaccinated

94.1%

of people over the age of 16 are fully vaccinated



10,453,973

people over the age of 16 who have received more than two doses

NSW
16,604,324
(+38,565 daily increase)

VIC
13,978,570
(+42,211 daily increase)

QLD
10,101,266
(+26,113 daily increase)

WA
5,539,225
(+25,155 daily increase)

TAS
1,169,361
(+4,304 daily increase)

SA
3,625,447
(+11,105 daily increase)

ACT
1,329,896
(+9,107 daily increase)

NT
510,950
(+1,375 daily increase)

*Administration state breakdown indicates state in which a vaccine was administered
**Overall dose count includes instances of more than two doses per person in a small number of cases.

Source: Australian Immunisation Register

Booster Vaccinations

Data as at:
16 Feb 2022



10,453,973 total people over the age of 16 years old who have received more than two doses nationally

+136,476 people who have received more than two doses nationally in the last 24 hours

NSW
3,300,490
(36,793 daily increase)

VIC
2,843,019
(38,660 daily increase)

QLD
1,844,570
(22,858 daily increase)

WA
1,124,192
(20,016 daily increase)

TAS
226,564
(3,768 daily increase)

SA
740,432
(9,522 daily increase)

ACT
221,077
(2,381 daily increase)

NT
82,662
(1,270 daily increase)

70,967

doses administered to persons residing in other territories or with missing residential information

Source: Australian Immunisation Register

Data as at:
16 Feb 2022

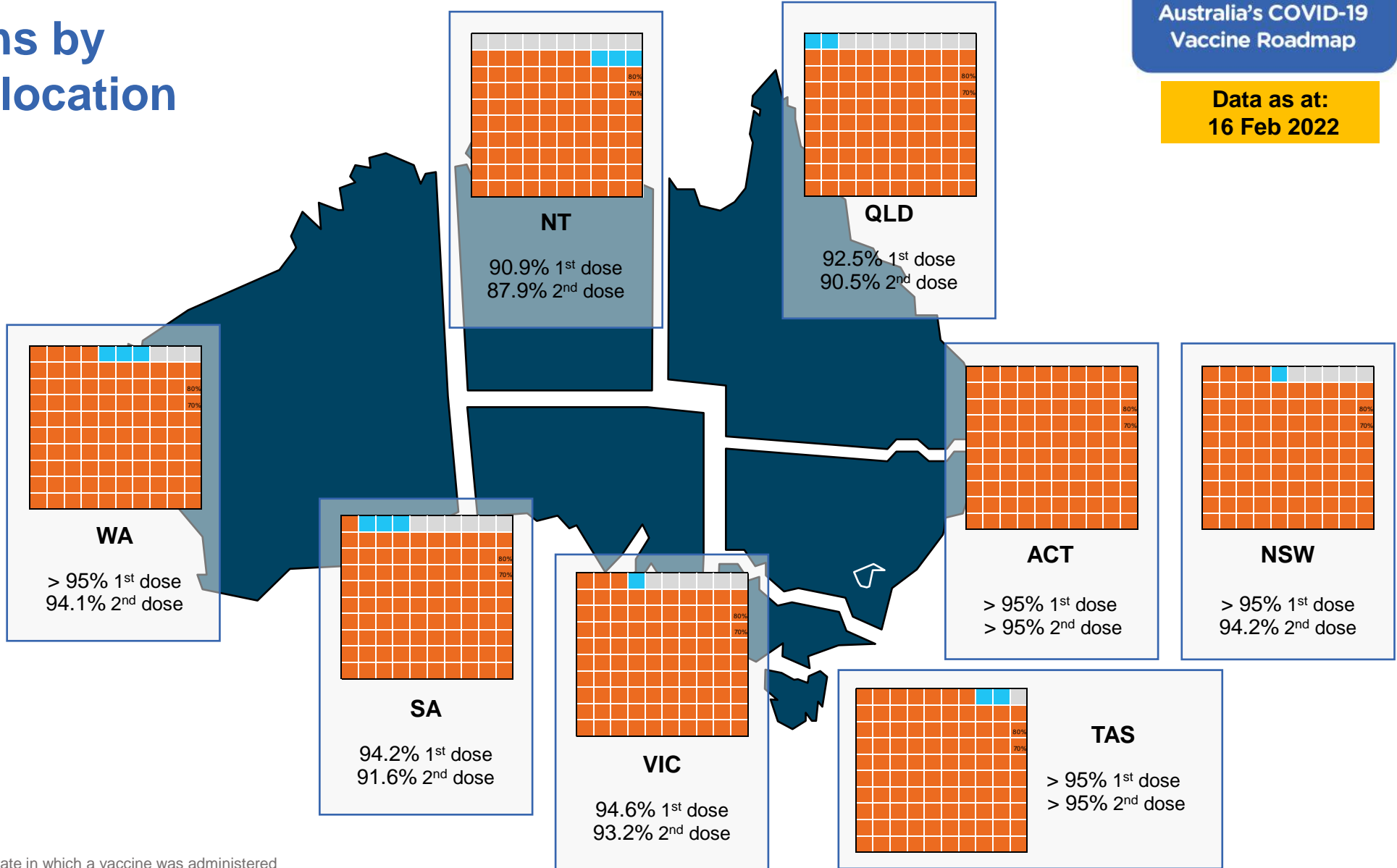
Vaccinations by residential location

First doses

Age	Today	4 weeks ago	8 weeks ago
16+	>95%	>95%	94.5%
50+	>95%	>95%	>95%
70+	>95%	>95%	>95%

Fully vaccinated

Age	Today	4 weeks ago	8 weeks ago
16+	94.1%	93.0%	91.4%
50+	>95%	>95%	>95%
70+	>95%	>95%	>95%



*Residential state may differ from the state in which a vaccine was administered

Commonwealth and Jurisdiction vaccine doses administered

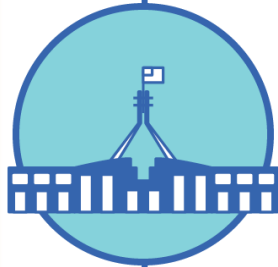
Data as at:
16 Feb 2022



52,859,039 total vaccine doses administered nationally as at 16 February
+ **157,935** recorded in the last 24 hours



19,835,579 doses administered by state and territory facilities
+ **30,769** recorded in the last 24 hours



33,023,460 doses administered by commonwealth facilities
+ **127,166** recorded in the last 24 hours

31,776,180 total vaccine doses administered in primary care settings
1,247,280 total vaccine doses administered in aged care and disability settings

NSW	Jurisdictions	Commonwealth
Cumulative	4,917,724	11,686,600
Daily increase	3,766	34,799

VIC	Jurisdictions	Commonwealth
Cumulative	5,750,110	8,228,460
Daily increase	9,252	32,959

QLD	Jurisdictions	Commonwealth
Cumulative	3,672,543	6,428,723
Daily increase	3,834	22,279

WA	Jurisdictions	Commonwealth
Cumulative	2,275,435	3,263,790
Daily increase	6,020	19,135

TAS	Jurisdictions	Commonwealth
Cumulative	575,574	593,787
Daily increase	1,149	3,155

SA	Jurisdictions	Commonwealth
Cumulative	1,669,591	1,955,856
Daily increase	3,042	8,063

ACT	Jurisdictions	Commonwealth
Cumulative	675,559	654,337
Daily increase	3,029	6,078

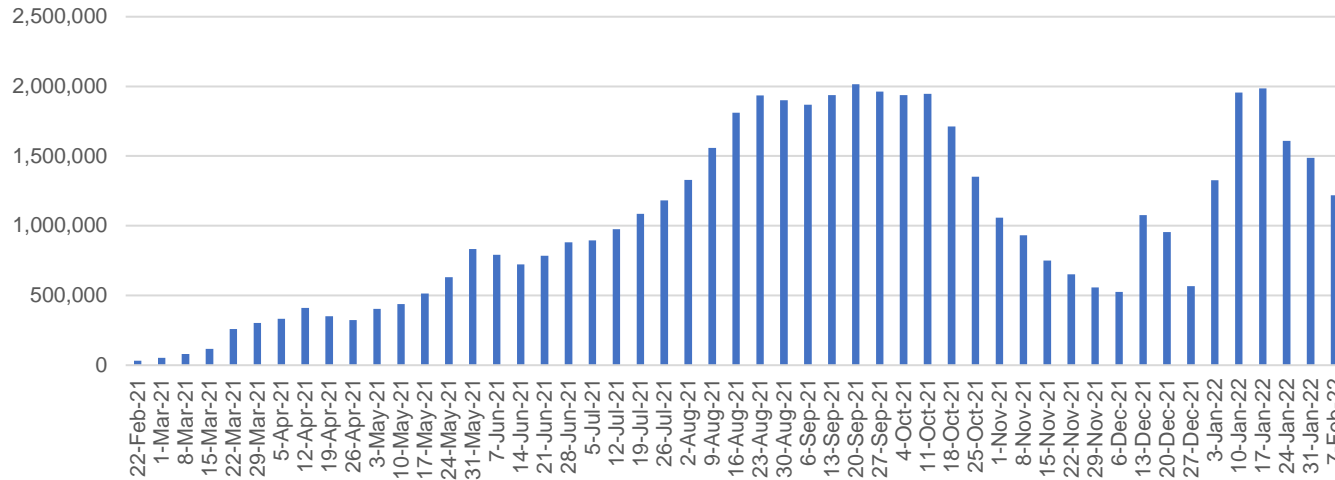
NT	Jurisdictions	Commonwealth
Cumulative	299,043	211,907
Daily increase	677	698

Vaccine milestone charts

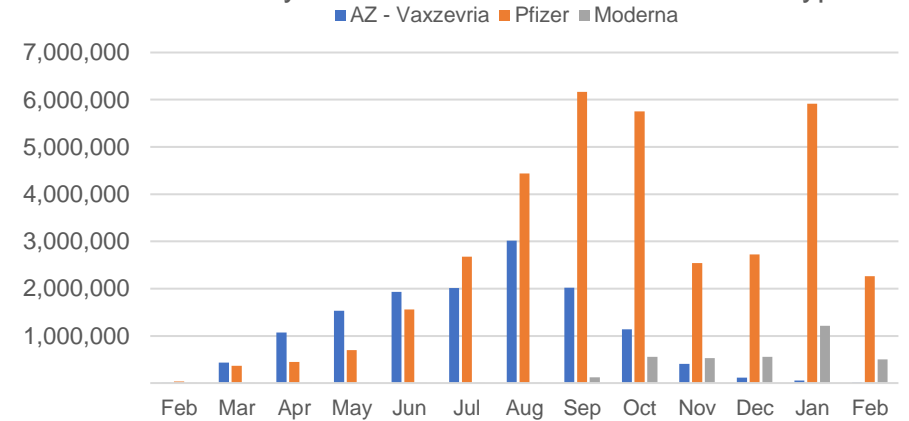
Data as at:
16 Feb 2022

Australia's COVID-19
Vaccine Roadmap

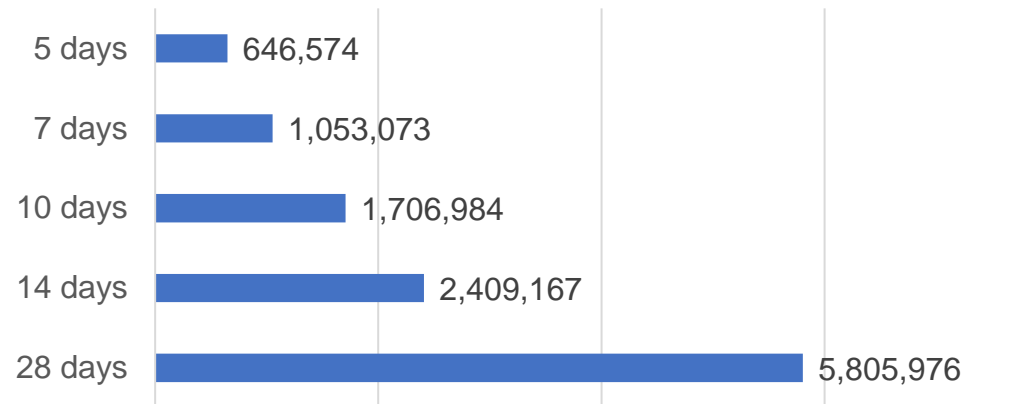
Doses Administered by Week



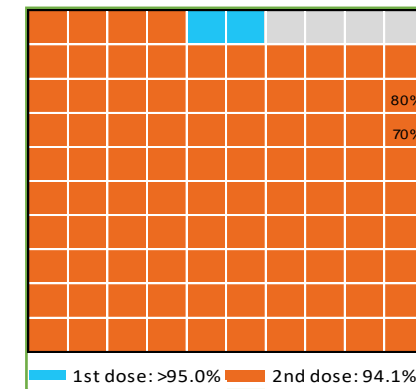
Doses by administration month and vaccine type



Doses Reported



Eligible population percentage coverage



*Sourced from the Australian Immunisation Register.

*Each square represents 1% of the national population. Squares are filled as milestones are achieved.

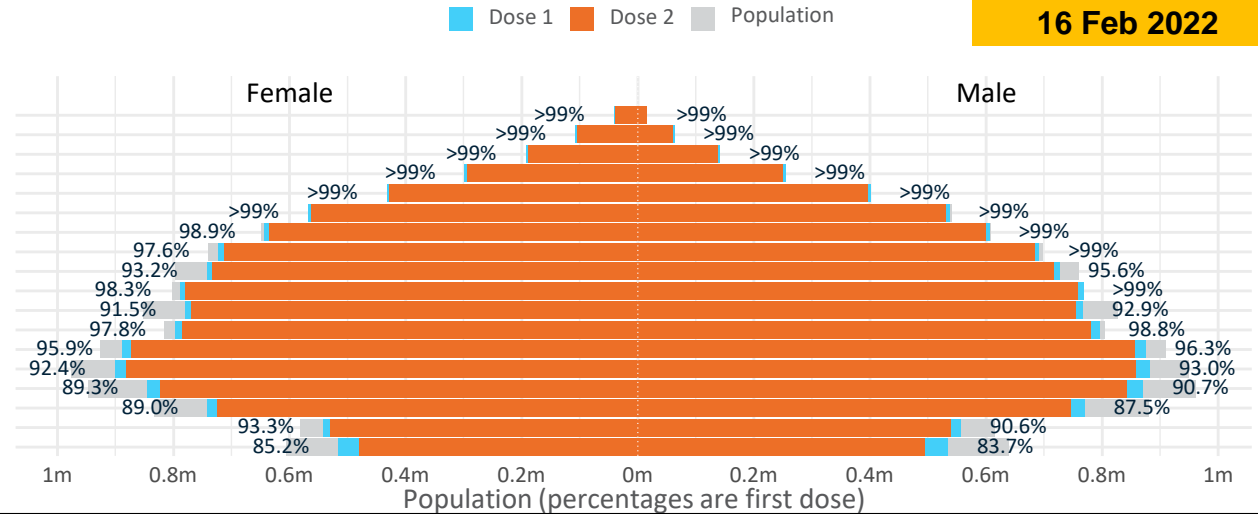
Doses by age and sex

First and second doses by age and sex

	16+	50+	12-15	5-11
Dose 1	95.99% (19,793,600 doses / 20,619,959 people)	>99% (8,748,290 doses / 8,749,703 people)	84.46% (1,050,664 doses / 1,243,990 people)	48.29% (1,099,307 doses / 2,276,638 people)
Dose 2	94.13% (19,409,879 doses / 20,619,959 people)	98.59% (8,626,695 doses / 8,749,703 people)	78.21% (972,917 doses / 1,243,990 people)	0.48% (10,916 doses / 2,276,638 people)

Data as at:
16 Feb 2022

Age	Dose 1	Dose 2
95+	57,806 (>99%)	54,239 (>99%)
90-94	170,875 (>99%)	164,526 (>99%)
85-89	335,082 (>99%)	326,841 (>99%)
80-84	552,586 (>99%)	543,693 (>99%)
75-79	833,569 (>99%)	823,627 (>99%)
70-74	1,105,936 (>99%)	1,093,417 (99.0%)
65-69	1,250,520 (>99%)	1,235,001 (98.2%)
60-64	1,415,392 (98.5%)	1,397,472 (97.3%)
55-59	1,469,604 (94.5%)	1,451,085 (93.3%)
50-54	1,556,920 (>99%)	1,536,794 (98.2%)
45-49	1,547,908 (92.3%)	1,525,233 (91.0%)
40-44	1,594,999 (98.4%)	1,566,553 (96.7%)
35-39	1,768,235 (96.4%)	1,730,863 (94.3%)
30-34	1,791,438 (93.1%)	1,744,391 (90.7%)
25-29	1,725,658 (90.5%)	1,673,904 (87.8%)
20-24	1,517,505 (88.6%)	1,473,947 (86.1%)
16-19	1,099,567 (92.0%)	1,068,293 (89.3%)
12-15	1,050,664 (84.5%)	972,917 (78.2%)



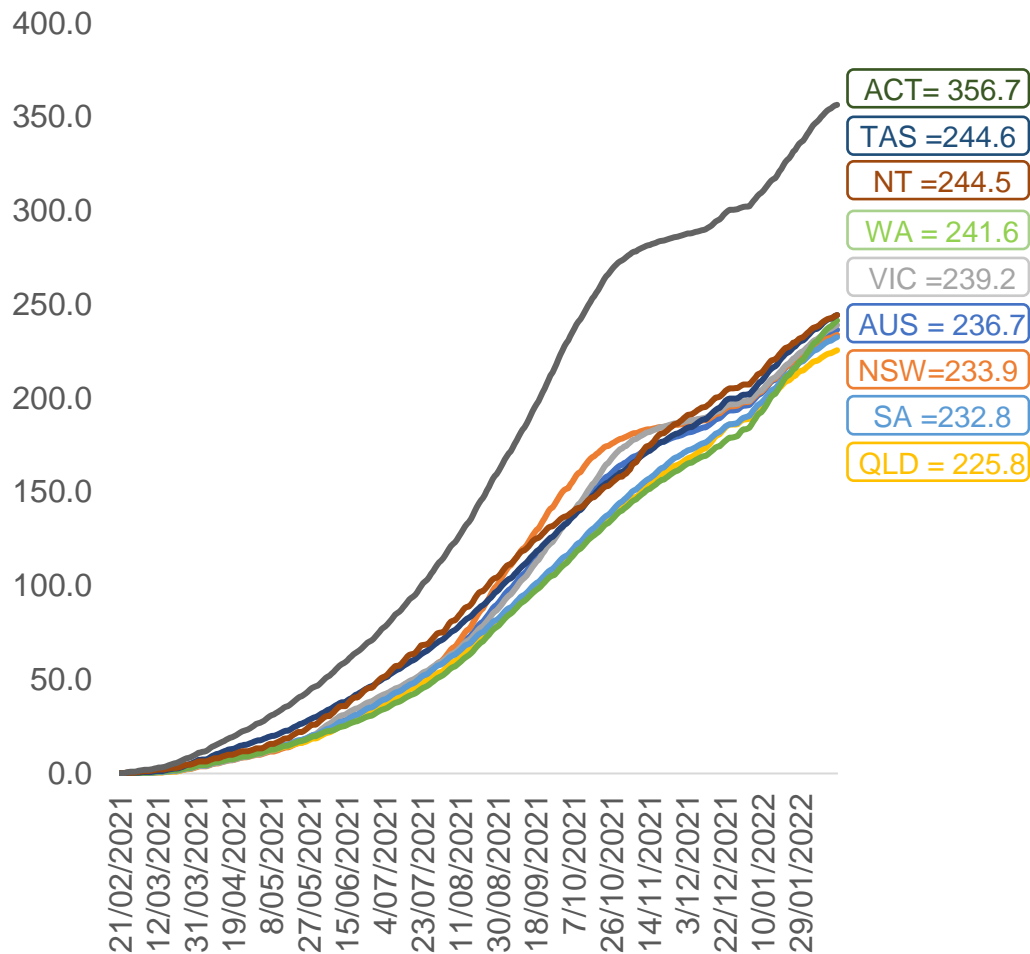
	AUS	ACT	NSW	NT	QLD	SA	TAS	VIC	WA
16 and over - dose 1	19,793,600	349,985	6,279,615	173,265	3,802,379	1,356,372	439,701	5,113,337	2,050,786
16 and over - dose 2	19,409,879	344,893	6,187,073	167,567	3,721,182	1,319,359	428,344	5,041,262	1,990,031
16 and over - population	20,619,959*	344,037	6,565,651	190,571	4,112,707	1,440,400	440,172	5,407,574	2,114,978
16 and over % with dose 1	95.99%	>99%	95.64%	90.92%	92.45%	94.17%	>99%	94.56%	96.96%
16 and over % with dose 2	94.13%	>99%	94.23%	87.93%	90.48%	91.60%	97.31%	93.23%	94.09%
5 to 11 - dose 1	1,099,307	30,418	330,422	12,100	199,419	78,980	27,368	305,257	108,660
5 to 11 - dose 2	10,916	175	4,519	88	1,819	292	51	3,531	375
5 to 11 - population	2,276,638	39,789	716,460	24,750	478,731	148,816	45,033	578,499	244,154
5 to 11 % with dose 1	48.29%	76.45%	46.12%	48.89%	41.66%	53.07%	60.77%	52.77%	44.50%
5 to 11 % with dose 2	0.48%	0.44%	0.63%	0.36%	0.38%	0.20%	0.11%	0.61%	0.15%
12 to 15 - dose 1	1,050,664	20,065	326,155	10,852	207,407	67,934	22,798	275,898	110,228
12 to 15 - dose 2	972,917	19,199	308,026	9,548	189,185	62,363	20,837	261,288	94,562
12 to 15 - population	1,243,990	19,693	390,330	13,060	270,146	82,747	26,308	308,611	132,869
12 to 15 % with dose 1	84.46%	>99%	83.56%	83.09%	76.78%	82.10%	86.66%	89.40%	82.96%
12 to 15 % with dose 2	78.21%	97.49%	78.91%	73.11%	70.03%	75.37%	79.20%	84.67%	71.17%

*National population will not equal sum of listed jurisdictions due to a small number of people counted in national population residing in some 'other' territories. Sum of state doses will not add to national total as some records are unable to be geocoded to a State or Territory.
Doses sourced from Australian Immunisation Register, population from ABS ERP June 2020

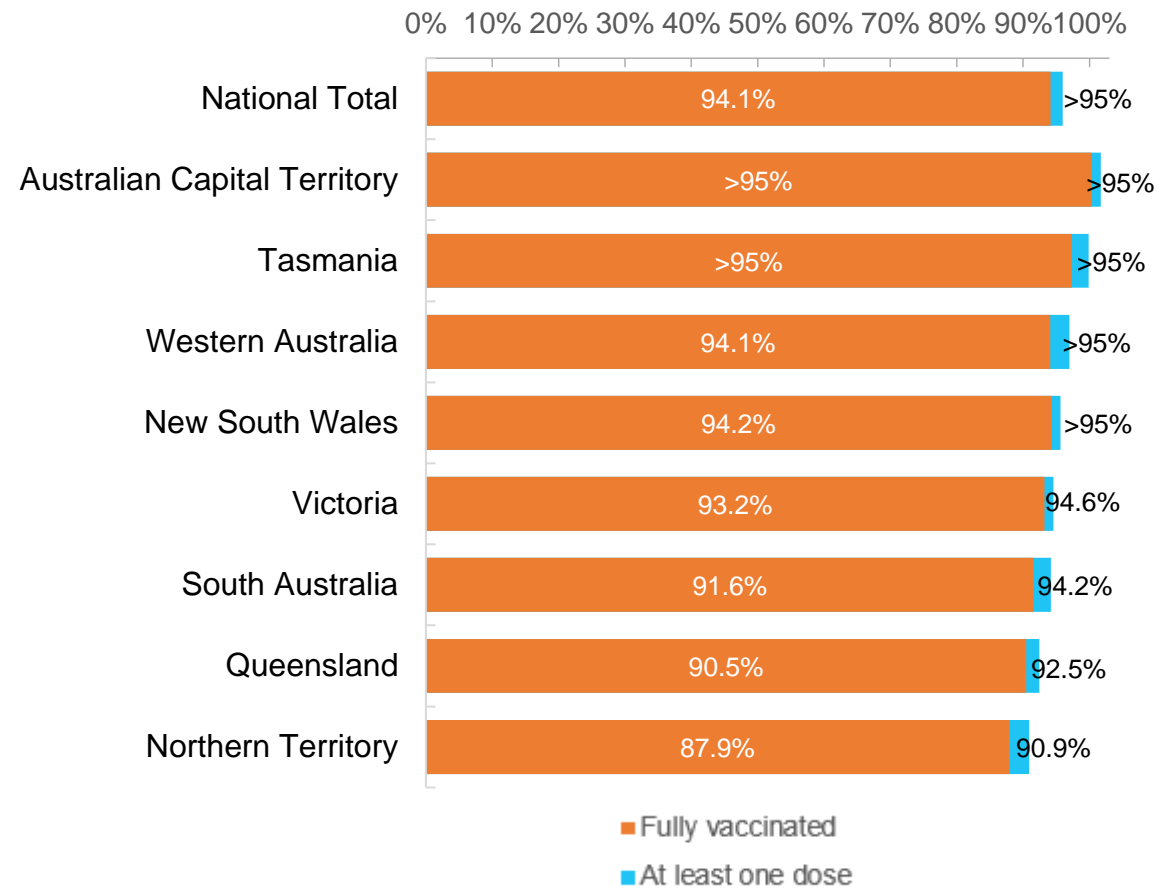
Data as at:
16 Feb 2022

Vaccinations by location

Cumulative total doses administered vs eligible state populations*



First and Second Doses by residential location



*Not an indication of percentage vaccinated, numbers will exceed 100 due to multiple doses required per person of the population. All doses are included for those aged 12 and above, and are based on vaccination provider location.

Aboriginal and Torres Strait Islander peoples

Number of people vaccinated

Data as at:
15 Feb 2022
Updated weekly

Australia's COVID-19
Vaccine Roadmap



429,831

people over the age of 16
have had at least one dose

82.7%

of people over the age of 16
have had at least one dose



402,335

people over the age of 16
are fully vaccinated

77.4%

of people over the age of 16 are
fully vaccinated



**47,215
(66.6%)**

people aged 12-15 years
have had at least one dose

175 Aboriginal community controlled health services (ACCHS)

0#	50	27	43	12	3	21	19
ACT	NSW	NT	QLD	SA	TAS	VIC	WA

Medicare Address State ^{##}	Individuals Dose 1	Individuals Dose 1 %	Individuals Dose 2	Individuals Dose 2 %
Australian Capital Territory	4,870	91.3%	4,731	88.7%
New South Wales	134,909	86.5%	131,405	84.2%
Northern Territory	41,631	88.2%	38,436	81.4%
Queensland	113,396	80.0%	105,656	74.5%
South Australia	19,495	78.1%	17,637	70.7%
Tasmania	14,144	87.8%	13,533	84.0%
Victoria	35,147	89.1%	34,208	86.8%
Western Australia	49,922	79.3%	42,743	67.9%
Unknown/Other Territories	16,317	62.8%	13,986	53.9%
Totals	429,831	82.7%	402,335	77.4%

Source: Australian Immunisation Register

*Identifying as Aboriginal and Torres Strait Islander is optional and the estimated population may be under reported.

**Includes all Aboriginal and Torres Strait Islander peoples who have received a vaccination, not limited to those administered in an ACCHS setting

#ACCHS in the ACT are currently operating as a Commonwealth Vaccine Clinics so not included to avoid double counting

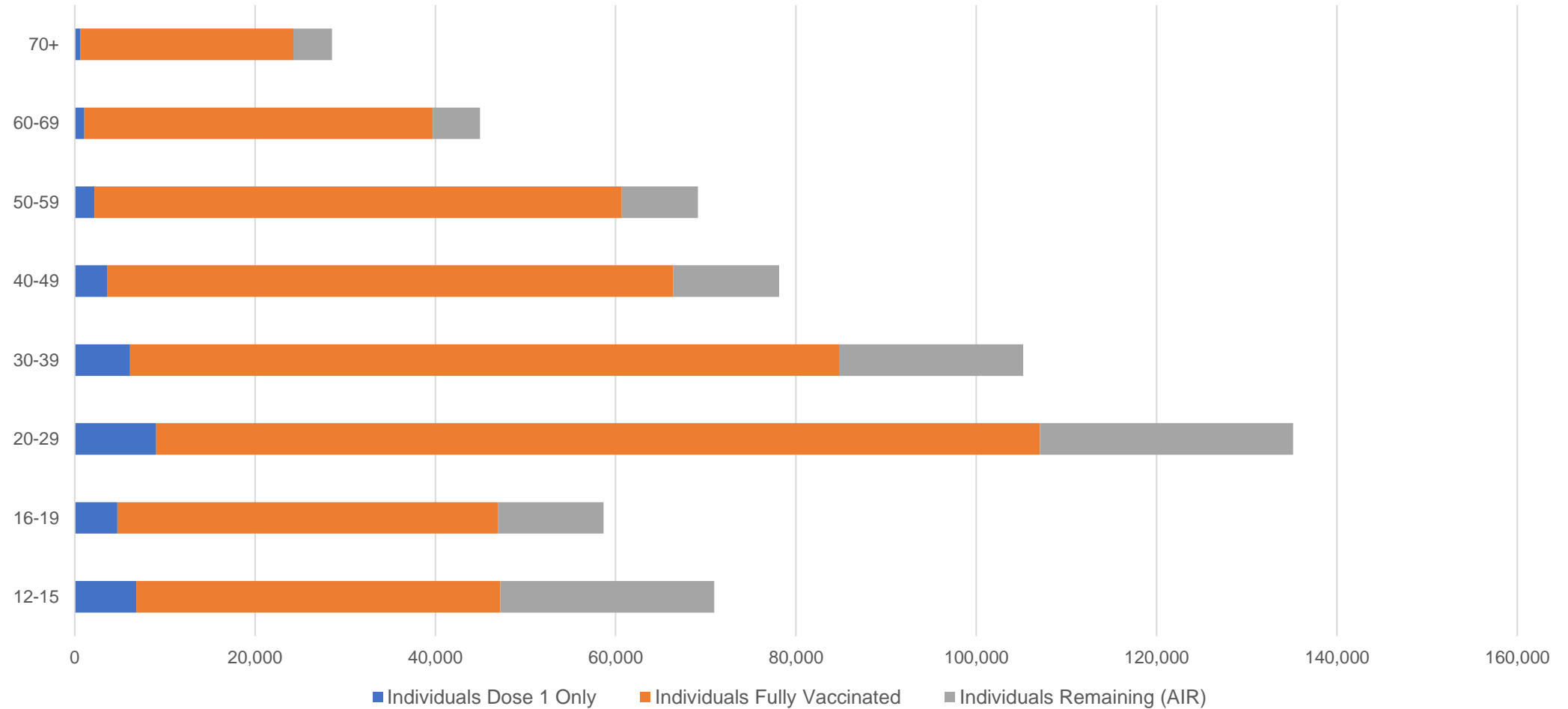
##The above table includes all identified Aboriginal and Torres Strait Islander people who are aged 16 and above by their state of residence.

Aboriginal and Torres Strait Islander peoples

Number of people vaccinated by age

Data as at:
15 Feb 2022
Updated weekly

Australia's COVID-19
Vaccine Roadmap



Source: Australian Immunisation Register

Commonwealth primary care

Data as at:
16 Feb 2022

Australia's COVID-19
Vaccine Roadmap



Primary care vaccine administration sites

5,758	128	175	3,543
GPs	CVCs	ACCHS	Pharmacies



31,776,180 total vaccine doses administered
primary care settings as at 16 February
+ 126,201 recorded in the last 24 hours

Primary care vaccinations by provider type

	Doses administered	Daily increase	7 day increase
General Practice* includes other Commonwealth	26,136,888	84,080	526,869
Pharmacy	5,639,292	42,121	266,869

NSW
11,152,083
(+35,913 daily increase)

VIC
7,928,370
(+33,060 daily increase)

QLD
6,154,947
(+22,990 daily increase)

WA
3,144,604
(+19,398 daily increase)

TAS
575,523
(+3,200 daily increase)

SA
1,879,868
(+8,294 daily increase)

ACT
505,328
(+1,755 daily increase)

NT
191,241
(+959 daily increase)

244,216 doses administered to persons residing in other territories or with missing residential information

*General practice includes Commonwealth Vaccination Clinics, Aboriginal Community Health Centres, Royal Flying Doctor Service and other Commonwealth vaccination facilities

Source: Australian Immunisation Register

Data as at:
16 Feb 2022

Commonwealth aged care and disability doses administered



1,247,280 (+ 965 last 24 hours)

Total vaccine doses administered in aged care and disability facilities as at 16 February

Number of doses administered as part of the Commonwealth aged and disability care rollout

NSW
554,295
(+330 daily increase)

VIC
238,006
(+167 daily increase)

QLD
196,791
(+154 daily increase)

WA
98,240
(+170 daily increase)

TAS
22,064
(+7 daily increase)

SA
83,274
(+11 daily increase)

ACT
16,229
(+26 daily increase)

NT
7,169
(+58 daily increase)

31,212 doses administered to persons residing in other territories or with missing residential information

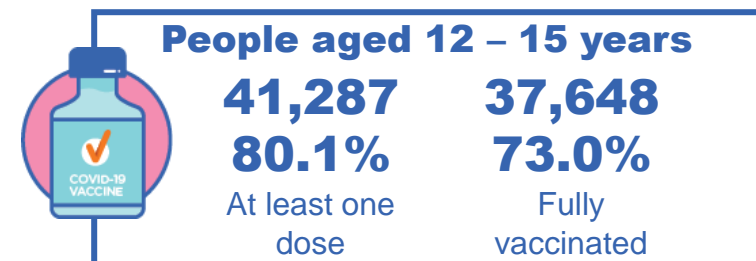
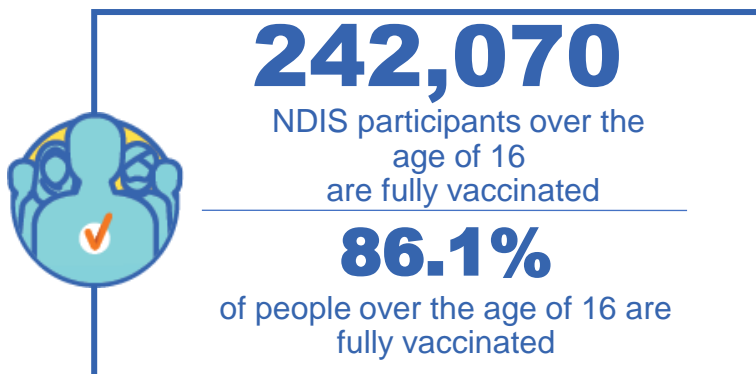
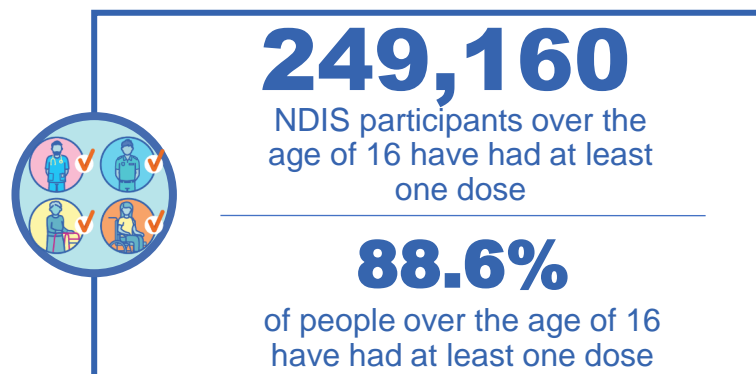
Source: Australian Immunisation Register

*Sourced from the Australian Immunisation Register. Includes all persons vaccinated at participating residential aged care, disability and related industry settings.
**State level breakdown indicates the residential location and may not align to the state in which the vaccination occurred.

National Disability Insurance Scheme (NDIS) reported vaccinations

Data as at:
10 February 2022
Updated weekly

Australia's COVID-19
Vaccine Roadmap



NDIS participant vaccinations

	People aged 16+ with at least one dose	People aged 16+ fully vaccinated	% People aged 16+ with at least one dose	% People aged 16+ fully vaccinated
ACT	4,773	4,697	90.8%	89.4%
NSW	77,357	75,976	89.1%	87.5%
NT	2,159	2,047	79.8%	75.7%
QLD	48,748	47,209	87.7%	84.9%
SA	20,210	19,373	86.2%	82.6%
TAS	6,222	5,972	88.4%	84.8%
VIC	66,592	65,256	89.8%	88.0%
WA	23,099	21,540	87.9%	82.0%
National	249,160	242,070	88.6%	86.1%

Source: Linkage between National Disability Insurance Agency data and the Australian Immunisation Register. Total NDIS participant numbers as at 17th October. Australian Immunisation Register data as at 09 February. Includes all participants regardless of residence type.

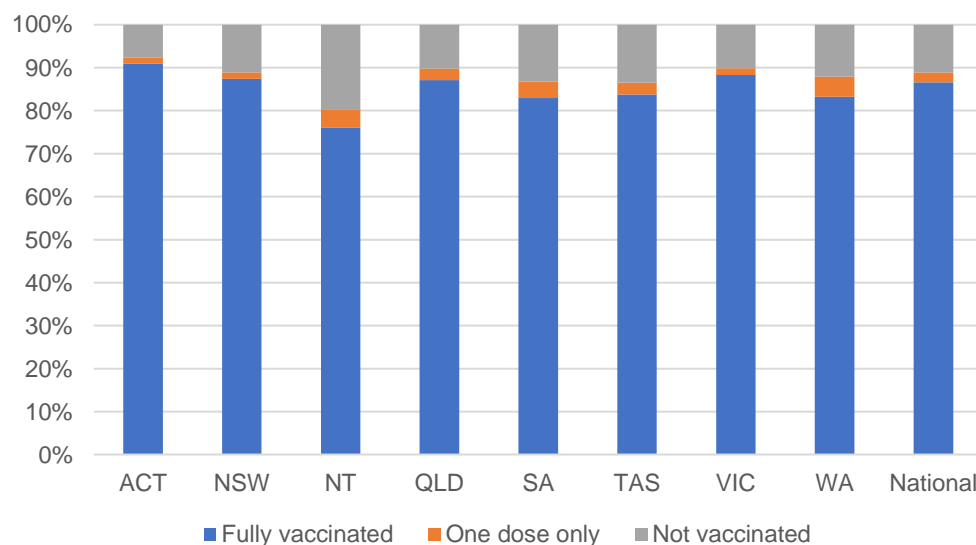
National Disability Insurance Scheme (NDIS) reported vaccinations

Data as at:
10 February 2022
Updated Weekly

Australia's COVID-19
Vaccine Roadmap

NATIONAL	Total people with at least one dose	People fully vaccinated	Total number of individuals in cohort	% People with at least one dose	% People fully vaccinated
NDIS participants living in disability accommodation	20,319	19,826	22,800	89.1%	87.0%

NDIS participants in disability and aged care accommodation



Source: Linkage between National Disability Insurance Agency data and the Australian Immunisation Register. Includes participants residing in disability accommodation only.
Source: Total NDIS participant numbers as at 17th October. Participant data as at 08 February. Australian Immunisation Register data as at 09 February. Worker data as at 09 February.

NDIS workforce vaccinations

	NDIS workers with at least one dose	NDIS workers fully vaccinated	% NDIS workers with at least one dose	% NDIS workers fully vaccinated
NSW	111,229	110,702	97.6%	97.2%
VIC	105,706	105,231	97.8%	97.3%
QLD	65,650	64,782	96.6%	95.3%
WA	31,968	30,550	98.2%	93.8%
SA	33,871	33,089	97.4%	95.1%
TAS	10,596	10,435	99.5%	98.0%
ACT	3,438	3,431	99.5%	99.3%
NT	3,066	3,023	99.4%	98.0%
TOTAL	365,524	361,243	97.6%	96.5%

Source: the NDIS Commission has established a requirement for registered NDIS providers who provide intensive disability support services to report on the vaccination status of workers they employ, or otherwise engage, to deliver NDIS-funded supports and services, and who are required to be vaccinated in accordance with in-force state and territory public health orders. The statistics reflect data reported to the NDIS Commission by registered NDIS providers and should be considered indicative and subject to change

Note: Some registered NDIS providers are yet to report on the vaccination status of their workforce. The NDIS Commission is working with those providers around reporting requirements.

Remaining workers not included include those exempt from vaccination requirements, workers whose vaccination status is not yet verified by the provider (such as workers on leave) and provider reporting anomalies.

Data as at: 16 Feb 2022

Residential aged care vaccination rollout

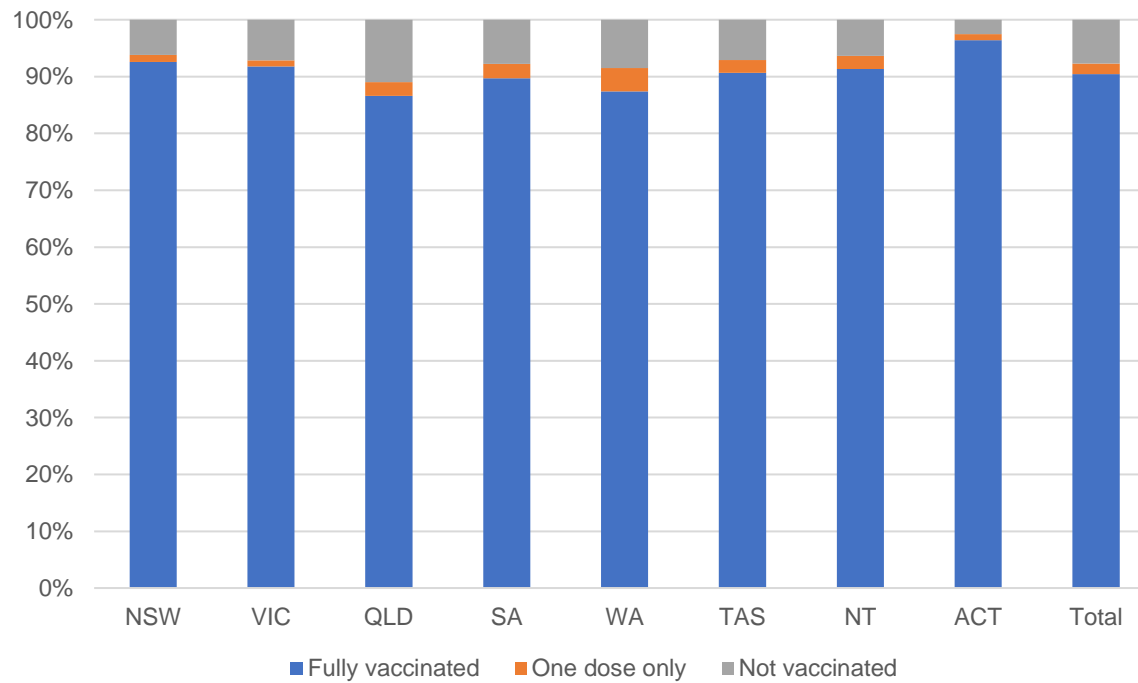
Residential aged care facilities status

100% Commonwealth facilities visited (2,541 planned sites)

171,962 People fully vaccinated

175,450 People with at least one dose

Aged care resident vaccinations



Aged care worker vaccinations

Jurisdictions	Total workers with at least one dose	Workers fully vaccinated	% Workers with at least one dose	% Workers fully vaccinated
NSW	78,708	78,681	99.2%	99.2%
VIC	69,060	69,059	98.6%	98.6%
QLD	48,670	48,667	98.5%	98.5%
SA	27,111	27,083	98.8%	98.7%
WA	23,839	23,836	99.4%	99.4%
TAS	7,642	7,642	100.0%	100.0%
NT	874	874	100.0%	100.0%
ACT	3,027	3,027	100.0%	100.0%
Total	258,931	258,869	98.9%	98.9%

Source: My Aged Care Portal vaccination progress

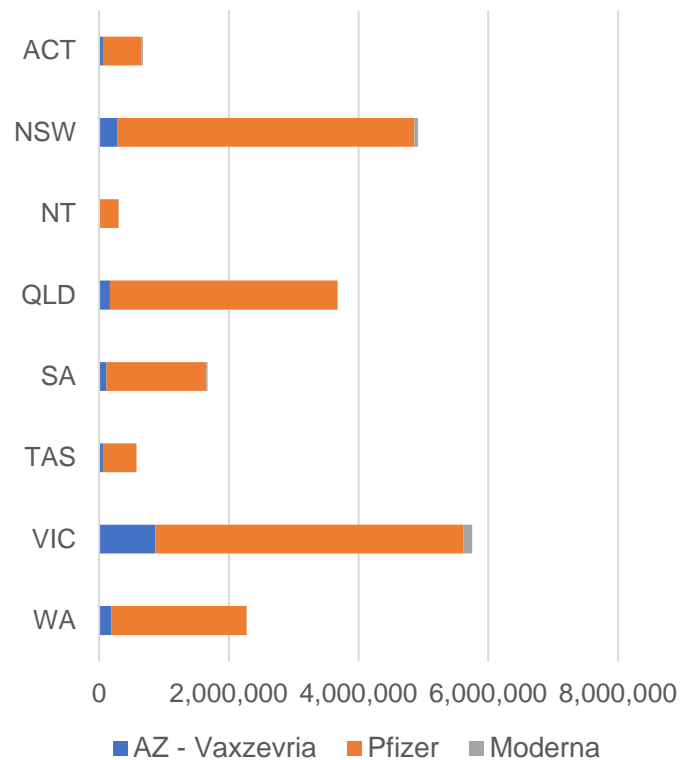
*Status updates are provided by facilities at least once per week. Reporting is updated Monday to Friday to encompass different facility updates being made on different days.

Data is sourced directly from Aged Care Service Providers and is not drawn or closely aligned with data from AIR due to inconsistencies and potential lags in uploading of records.

Data as at:
16 Feb 2022

Jurisdiction administered

Total vaccine doses administered in State and Territory clinics as at 16 February



19,835,579 total vaccine doses administered in State and Territory clinics as at 16 February
 + **30,769** recorded in the last 24 hours
 + **252,234** recorded in the last 7 days

NSW
4,917,724
 (+3,766 daily increase)

VIC
5,750,110
 (+9,252 daily increase)

QLD
3,672,543
 (+3,834 daily increase)

WA
2,275,435
 (+6,020 daily increase)

TAS
575,574
 (+1,149 daily increase)

SA
1,669,591
 (+3,042 daily increase)

ACT
675,559
 (+3,029 daily increase)

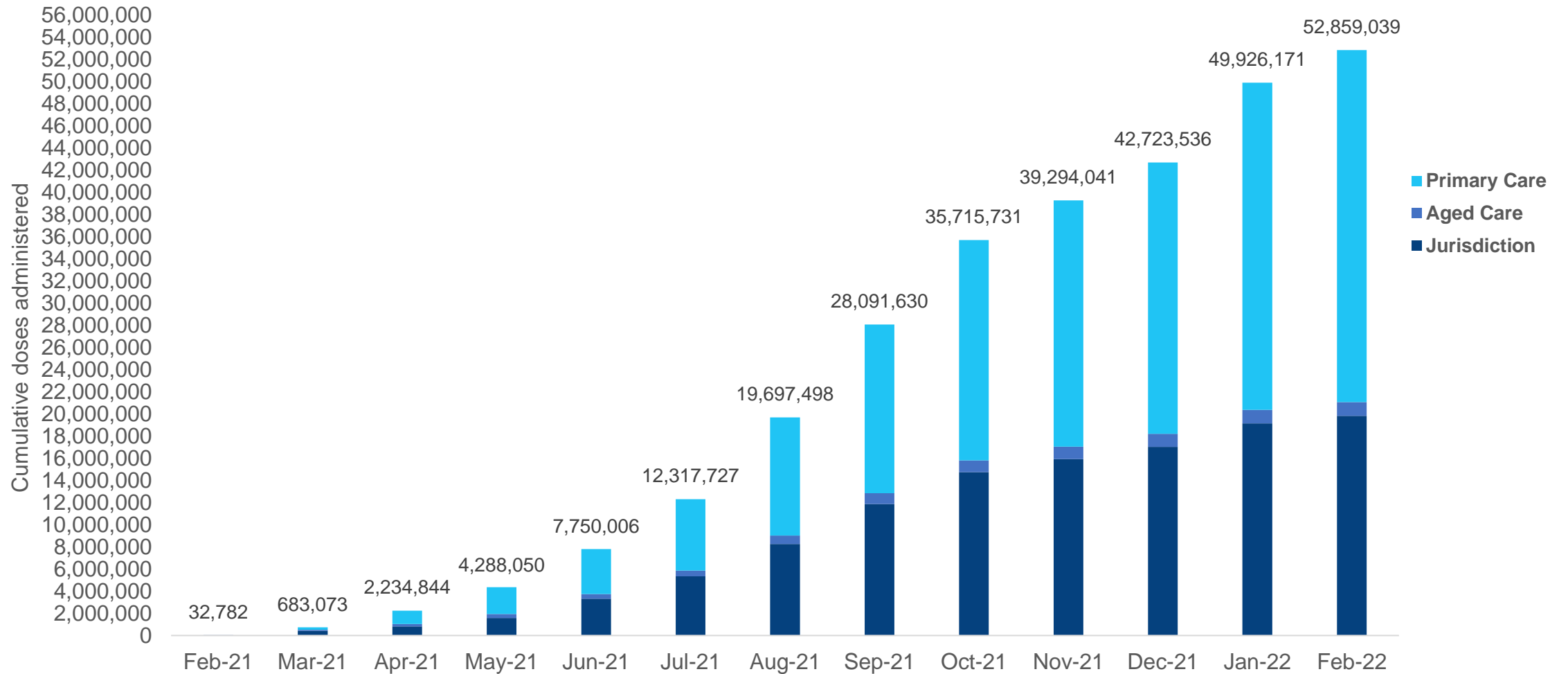
NT
299,043
 (+677 daily increase)

*Sourced from the Australian Immunisation Register. Numbers are calculated as difference in daily cumulative reported numbers to allow for historical corrections.

Source: Australian Immunisation Register

Data as at:
16 Feb 2022

Cumulative doses administered by channel



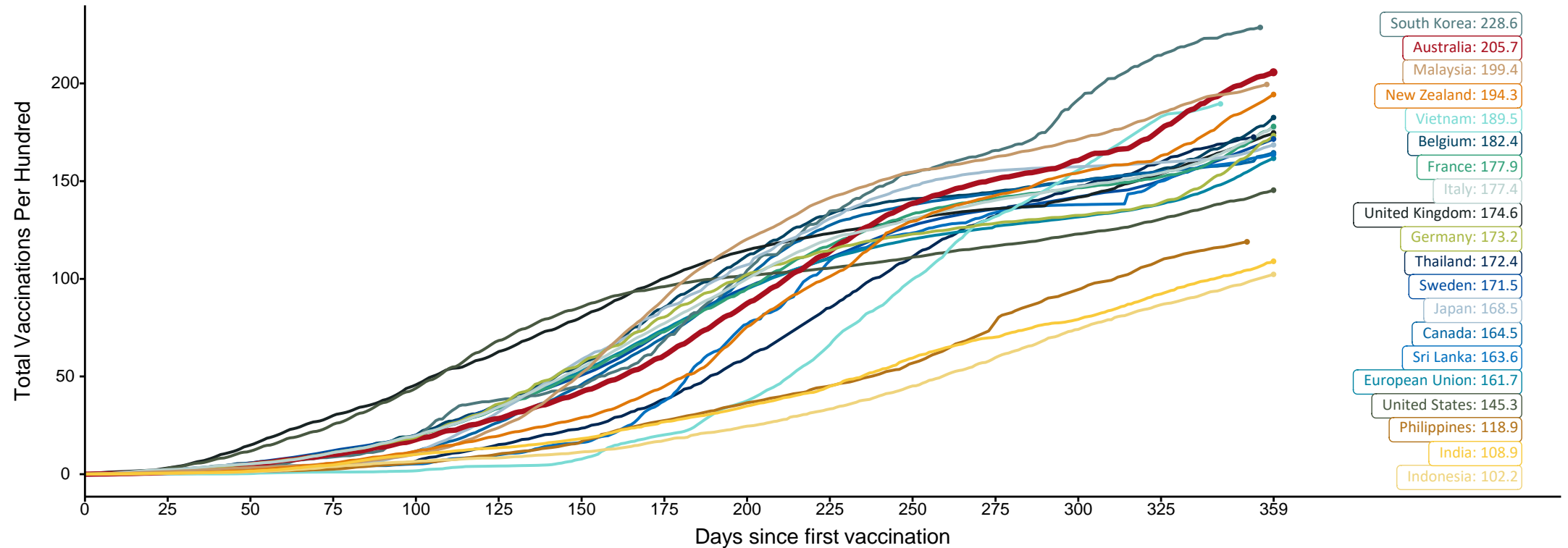
Source: Australian Immunisation Register

Doses at equivalent stages of rollout (Day 359)

Data as at:
16 Feb 2022

The x-axis is truncated at the length of Australia's vaccination program. Countries with intermittent reporting have had their doses per 100 imputed to Australia's current stage of rollout. Israel excluded as it is beyond scale of the graph

Cumulative doses administered (16 Feb): **52,859,039**

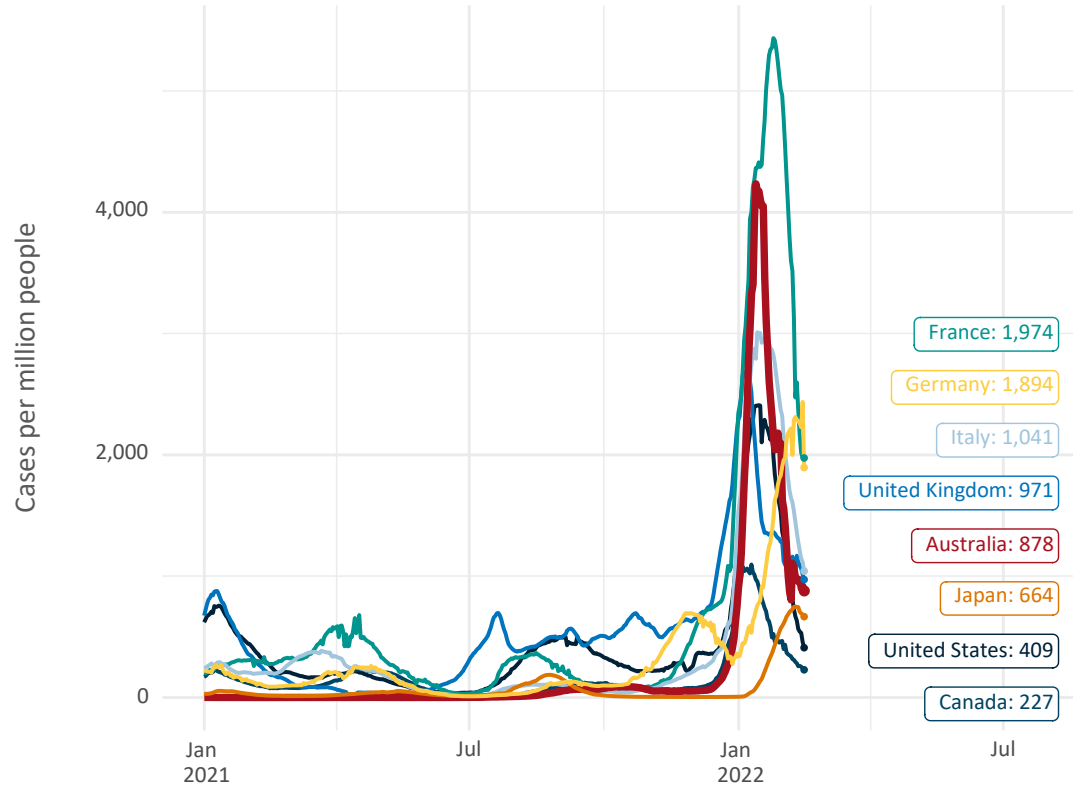


Note: From 15 September 2021, data for Australia includes all doses administered to people 12 and over. Prior to 15 September, data was for 16 and over
 Due to data revisions, Singapore has been removed from the chart
 Source: Department of Health (Australia), Our World in Data (international)
 Latest data: 16 February

Data as at:
16 Feb 2022

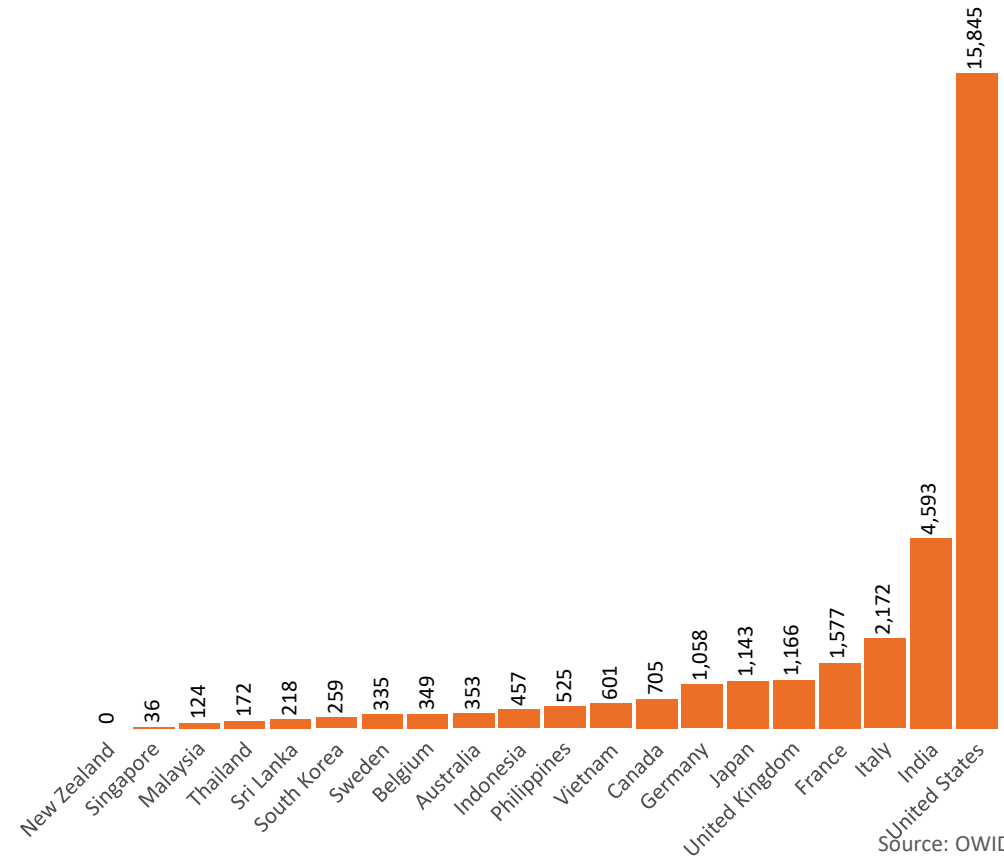
International data – COVID-19

New daily cases per million in 2021, Australia and G7 countries
Smoothed - 7 day average



Source: OWID
Data downloaded: 17 Feb 2022 08:50
Latest data: 15 Feb 2022

COVID-19 deaths in past 7 days - Australia and select countries

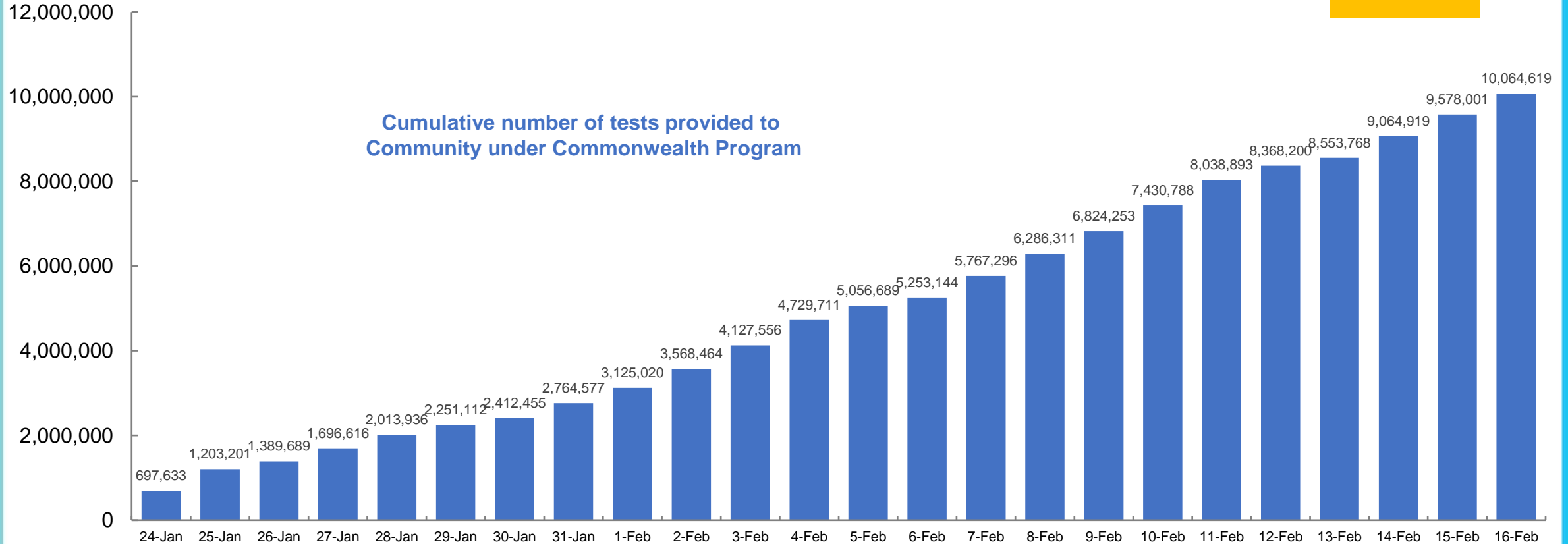


Source: OWID
Data downloaded: 17 Feb 2022 08:50
Latest data: 15 Feb 2022

Data as at:
16 Feb 2022


Concessional rapid antigen test program

5,335 pharmacies have delivered over 10 million rapid antigen tests to more than 2.2 Million eligible concession card holders under the Government's concessional rapid antigen test program.



Data as at midnight:
13 Feb 2022
Updated weekly

Pandemic Response Payments



2.38 million
People have received at least one COVID Disaster Payment (including ISP200)

\$13.59 billion
Paid Out as at 13 Feb 2022


6.81 million
Claims granted across three different payments



92%
of Claims Received Digitally



COVID Disaster Payment:	5.89 million claims received - 2.19 million individuals paid a total of \$12.59 billion.
\$200 Income Support Payment:	353,000 claims received - 183,000 individuals paid a total of \$268.9 million.
Pandemic Leave Disaster Payment:	974,000 claims received - 674,000 individuals paid a total of \$729.6 million.



THREE PAYMENTS AVAILABLE

COVID Disaster Payment
assisting during a lockdown event in a Commonwealth hotspot.

Income Support Payment \$200
for income support recipients who lost at least 8 hours of work.

Pandemic Leave Disaster Payment
for those who have to self-isolate, quarantine or care.

For more information visit:
servicesaustralia.gov.au

COVID-19 DISASTER PAYMENTS

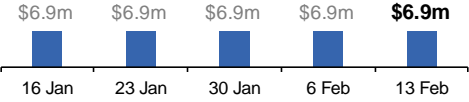
Northern Territory
Lockdown (#3) from 16 Nov to 22 Nov
Claiming period ended 27 Dec

7,500 people have received at least one COVID Disaster Payment.

\$6.9m paid out as at 13 Feb 2022.

\$0 paid in initial payments in the week ending 13 Feb 2022.

Cumulative payments made by Territory since activation on 25 Aug 2021.



Date	Cumulative Payments
16 Jan	\$6.9m
23 Jan	\$6.9m
30 Jan	\$6.9m
6 Feb	\$6.9m
13 Feb	\$6.9m

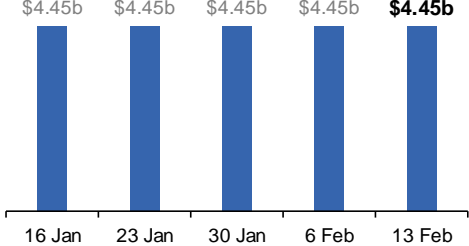
Victoria
Lockdown (#6) from 6 Aug to 28 Oct
Claiming period ended 9 Dec

745,000 people have received at least one COVID Disaster Payment.

\$4.45b paid out as at 13 Feb 2022.

\$10,000 paid in initial and reoccurring payments in the week ending 13 Feb 2022.

Cumulative payments made by State since activation on 8 Jun 2021.



Date	Cumulative Payments
16 Jan	\$4.45b
23 Jan	\$4.45b
30 Jan	\$4.45b
6 Feb	\$4.45b
13 Feb	\$4.45b

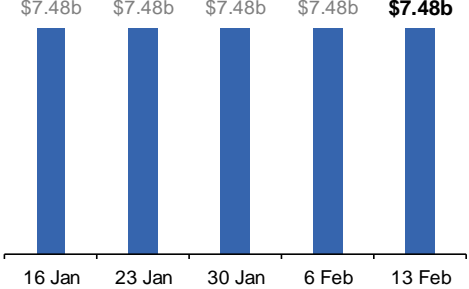
New South Wales
Lockdown from 24 Jun to 10 Oct
Claiming period ended 27 Nov

1.08m people have received at least one COVID Disaster Payment.

\$7.48b paid out as at 13 Feb 2022.

\$23,000 paid in initial and reoccurring payments in the week ending 13 Feb 2022.

Cumulative payments made by State since activation on 1 Jul 2021.



Date	Cumulative Payments
16 Jan	\$7.48b
23 Jan	\$7.48b
30 Jan	\$7.48b
6 Feb	\$7.48b
13 Feb	\$7.48b

Australian Capital Territory
Lockdown from 12 Aug to 14 Oct
Claiming period ended 25 Nov

65,000 people have received at least one COVID Disaster Payment.

\$344.7m paid out as at 13 Feb 2022.

\$3,000 paid in initial and reoccurring payments in the week ending 13 Feb 2022.

Cumulative payments made by Territory since activation on 20 Aug 2021.



Date	Cumulative Payments
16 Jan	\$344.7m
23 Jan	\$344.7m
30 Jan	\$344.7m
6 Feb	\$344.7m
13 Feb	\$344.7m

Data as at midnight:
13 Feb 2022
Updated weekly

Pandemic Response Payments (continued)

COVID-19 DISASTER PAYMENTS

Tasmania

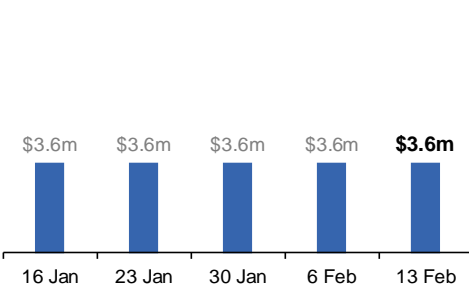
Lockdown from 15 Oct to 18 Oct
Claiming period ended 12 Nov

6,900 people have received at least one COVID Disaster Payment.

\$3.6m paid out as at 13 Feb 2022.

\$0 paid in initial and reoccurring payments in the week ending 13 Feb 2022.

Cumulative payments made by State since activation on 22 Oct 2021.



Queensland

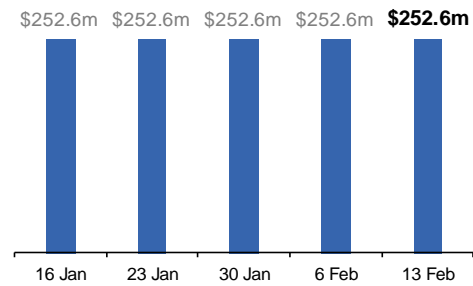
Lockdown from 31 Jul to 11 Aug
Claiming period ended 28 Aug

196,000 people have received at least one COVID Disaster Payment.

\$252.6m paid out as at 13 Feb 2022.

\$0 paid in initial and reoccurring payments in the week ending 13 Feb 2022.

Cumulative payments made by State since activation on 7 Aug 2021.



South Australia

Lockdown from 21 to 27 Jul
Claiming period ended 17 Aug

86,000 people have received at least one COVID Disaster Payment.

\$48.2m paid out as at 13 Feb 2022.

\$0 paid in initial and reoccurring payments in the week ending 13 Feb 2022.

Cumulative payments made by State since activation on 28 Jul 2021.

