



**Australian Government**  
**Operation COVID Shield**

# COVID-19 Vaccine Rollout

16 February 2022

Data as at:  
15 Feb 2022

## Total vaccine doses



**52,701,104** total vaccine  
doses administered nationally as at 15 February  
**+161,740** recorded in the last 24 hours



**19,788,248**

people have had at least one  
dose

**>95%**

of people over the age of 16  
have had at least one dose



**19,401,972**

people are fully vaccinated

**94.1%**

of people over the age of 16 are  
fully vaccinated



**10,317,497**

people over the age of 16  
who have received more  
than two doses

**NSW**  
**16,565,759**  
(+43,340 daily  
increase)

**VIC**  
**13,936,359**  
(+43,309 daily  
increase)

**QLD**  
**10,075,153**  
(+27,693 daily  
increase)

**WA**  
**5,514,070**  
(+25,143 daily  
increase)

**TAS**  
**1,165,057**  
(+4,196 daily  
increase)

**SA**  
**3,614,342**  
(+11,056 daily  
increase)

**ACT**  
**1,320,789**  
(+5,476 daily  
increase)

**NT**  
**509,575**  
(+1,527 daily  
increase)

\*Administration state breakdown indicates state in which a vaccine was administered

\*\*Overall dose count includes instances of more than two doses per person in a small number of cases.

Source: Australian Immunisation Register

# Booster Vaccinations

Australia's COVID-19  
Vaccine Roadmap

Data as at:  
15 Feb 2022



**10,317,497** total people over the age of 16 years old  
who have received more than two doses nationally

**+139,440** people who have received more than two doses  
nationally in the last 24 hours

**NSW**  
**3,263,697**  
(39,733 daily  
increase)

**VIC**  
**2,804,359**  
(39,210 daily  
increase)

**QLD**  
**1,821,712**  
(23,043 daily  
increase)

**WA**  
**1,104,176**  
(19,420 daily  
increase)

**TAS**  
**222,796**  
(3,675 daily  
increase)

**SA**  
**730,910**  
(9,372 daily  
increase)

**ACT**  
**218,696**  
(2,713 daily  
increase)

**NT**  
**81,392**  
(1,123 daily  
increase)

**69,759**

doses administered to persons  
residing in other territories or with  
missing residential information

Source: Australian Immunisation Register

# Vaccinations by residential location

Australia's COVID-19 Vaccine Roadmap

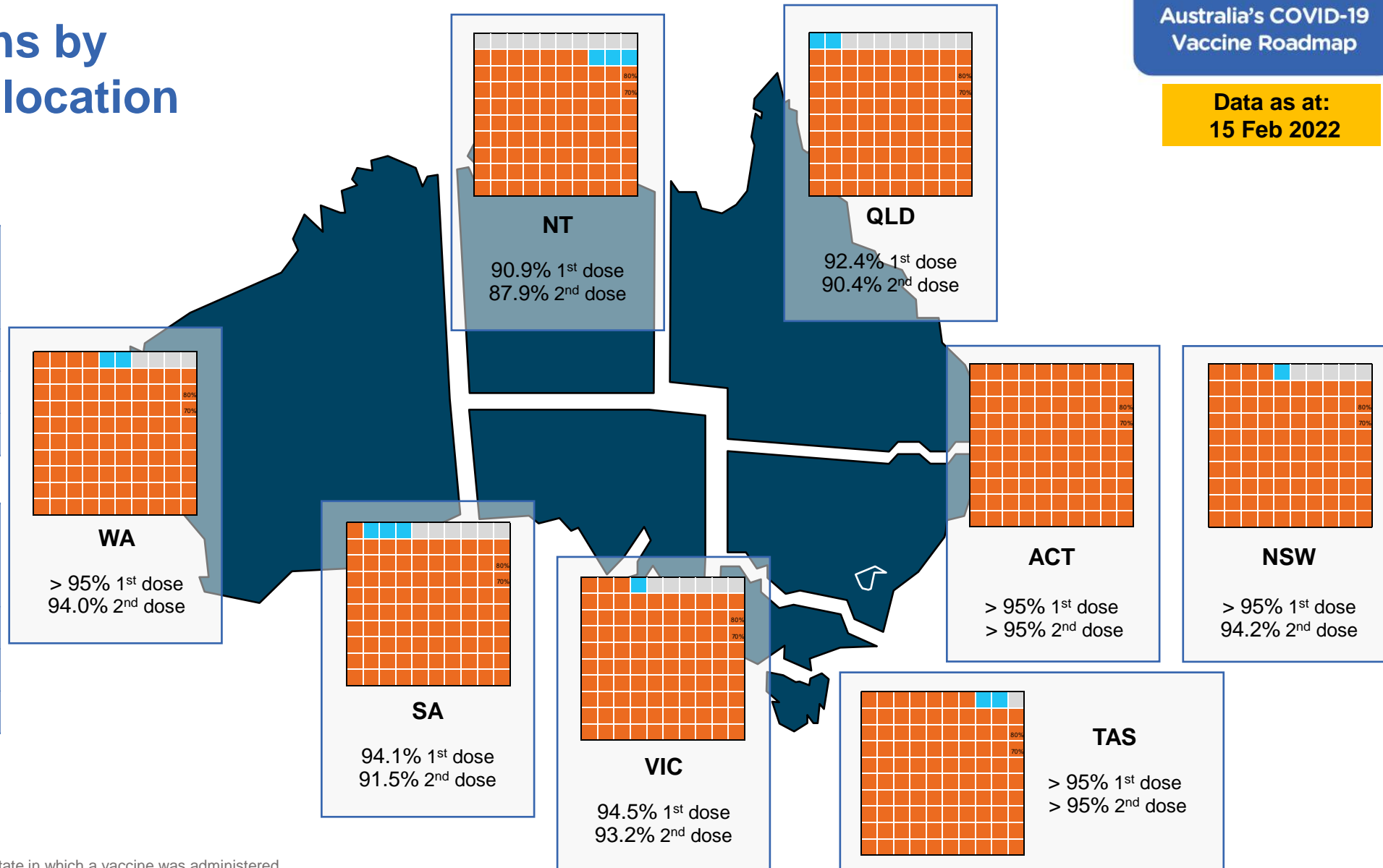
Data as at:  
15 Feb 2022

## First doses

Age	Today	4 weeks ago	8 weeks ago
16+	>95%	>95%	94.4%
50+	>95%	>95%	>95%
70+	>95%	>95%	>95%

## Fully vaccinated

Age	Today	4 weeks ago	8 weeks ago
16+	94.1%	92.9%	91.3%
50+	>95%	>95%	>95%
70+	>95%	>95%	>95%



\*Residential state may differ from the state in which a vaccine was administered

# Commonwealth and Jurisdiction vaccine doses administered

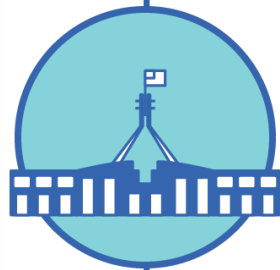
Data as at:  
15 Feb 2022



**52,701,104** total vaccine  
doses administered nationally as at 15 February  
**+ 161,740** recorded in the last 24 hours



**19,804,810**  
doses administered by state  
and territory facilities  
**+ 32,306**  
recorded in the last 24 hours



**32,896,294**  
doses administered by  
commonwealth facilities  
**+ 129,434**  
recorded in the last 24 hours

**31,649,979** total vaccine doses  
administered in primary care settings  
**1,246,315** total vaccine doses  
administered in aged care and disability  
settings

NSW	Jurisdictions	Commonwealth
Cumulative	4,913,958	11,651,801
Daily increase	3,787	39,553

VIC	Jurisdictions	Commonwealth
Cumulative	5,740,858	8,195,501
Daily increase	10,374	32,935

QLD	Jurisdictions	Commonwealth
Cumulative	3,668,709	6,406,444
Daily increase	3,833	23,860

WA	Jurisdictions	Commonwealth
Cumulative	2,269,415	3,244,655
Daily increase	6,239	18,904

TAS	Jurisdictions	Commonwealth
Cumulative	574,425	590,632
Daily increase	912	3,284

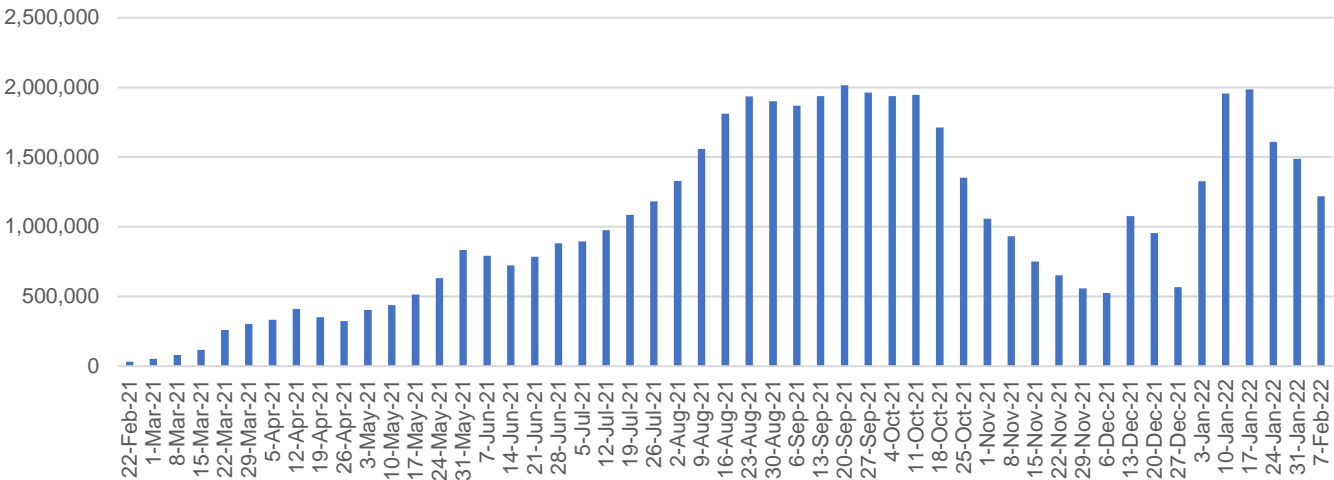
SA	Jurisdictions	Commonwealth
Cumulative	1,666,549	1,947,793
Daily increase	3,224	7,832

ACT	Jurisdictions	Commonwealth
Cumulative	672,530	648,259
Daily increase	3,140	2,336

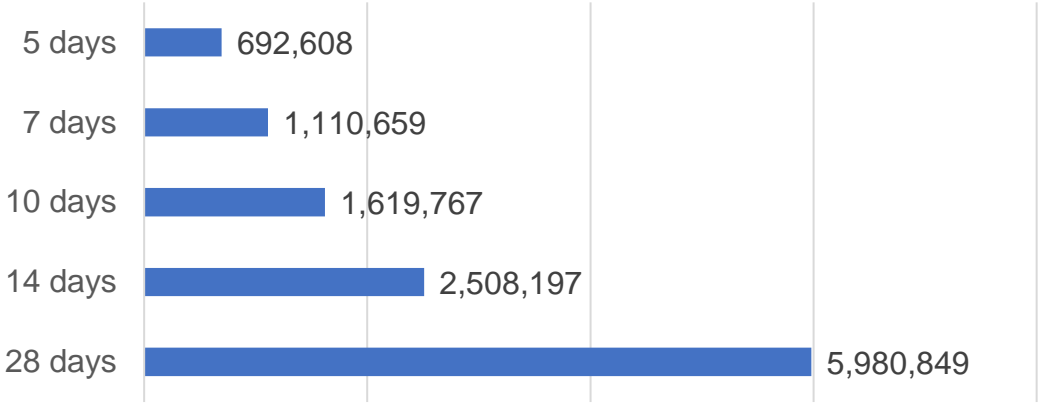
NT	Jurisdictions	Commonwealth
Cumulative	298,366	211,209
Daily increase	797	730

# Vaccine milestone charts

Doses Administered by Week



Doses Reported

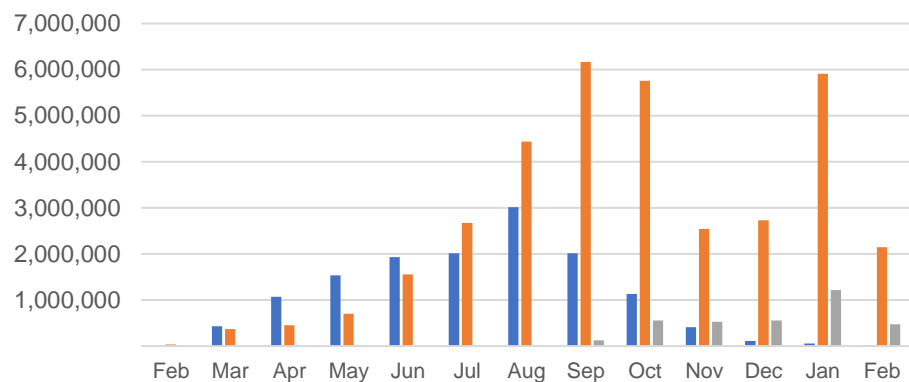


\*Sourced from the Australian Immunisation Register.

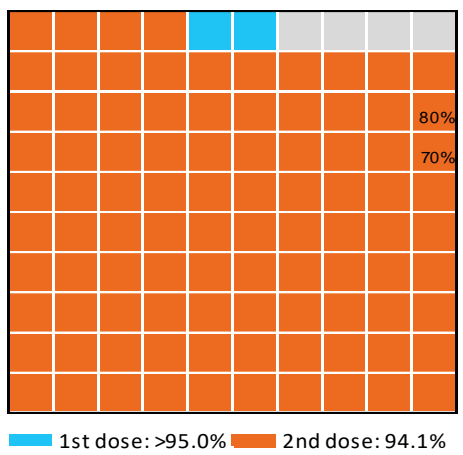
Data as at:  
15 Feb 2022

Australia's COVID-19  
Vaccine Roadmap

Doses by administration month and vaccine type



Eligible population percentage coverage



\*Each square represents 1% of the national population. Squares are filled as milestones are achieved.

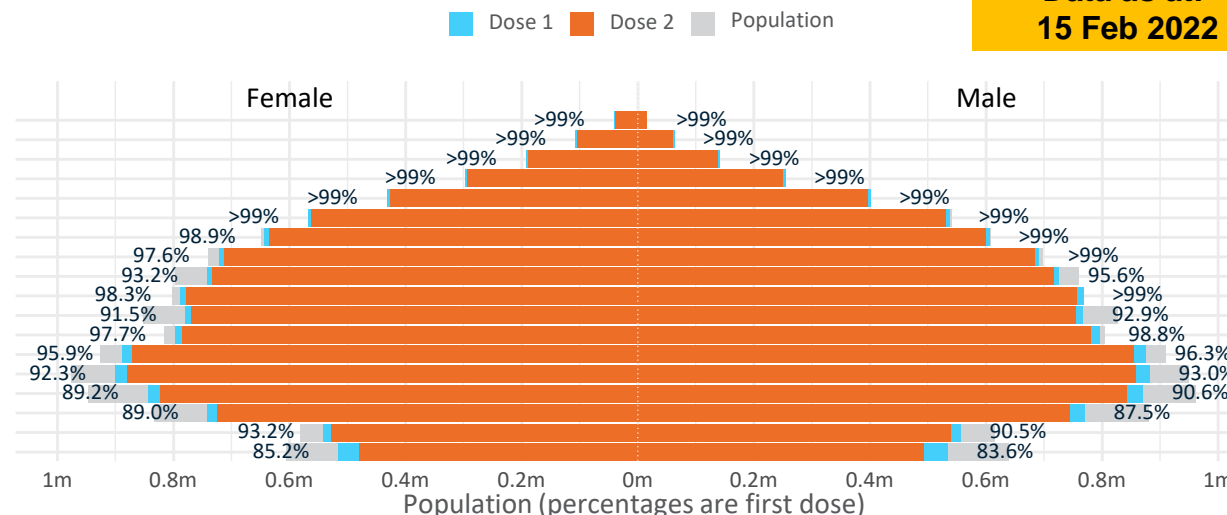
Data as at:  
15 Feb 2022

# Doses by age and sex

First and second doses by age and sex

	16+	50+	12-15	5-11
Dose 1	95.97% (19,788,248 doses / 20,619,959 people)	>99% (8,746,198 doses / 8,749,703 people)	84.43% (1,050,248 doses / 1,243,990 people)	48.08% (1,094,590 doses / 2,276,638 people)
Dose 2	94.09% (19,401,972 doses / 20,619,959 people)	98.56% (8,623,865 doses / 8,749,703 people)	78.16% (972,248 doses / 1,243,990 people)	0.46% (10,381 doses / 2,276,638 people)

Age	Dose 1	Dose 2
95+	57,737 (>99%)	54,155 (>99%)
90-94	170,748 (>99%)	164,384 (>99%)
85-89	334,923 (>99%)	326,628 (>99%)
80-84	552,422 (>99%)	543,470 (>99%)
75-79	833,228 (>99%)	823,202 (>99%)
70-74	1,105,857 (>99%)	1,093,258 (98.9%)
65-69	1,250,288 (>99%)	1,234,662 (98.1%)
60-64	1,415,058 (98.5%)	1,397,042 (97.2%)
55-59	1,469,394 (94.5%)	1,450,774 (93.3%)
50-54	1,556,543 (>99%)	1,536,290 (98.2%)
45-49	1,547,653 (92.3%)	1,524,775 (90.9%)
40-44	1,594,616 (98.4%)	1,566,025 (96.7%)
35-39	1,767,796 (96.3%)	1,730,117 (94.3%)
30-34	1,790,911 (93.1%)	1,743,547 (90.6%)
25-29	1,725,130 (90.5%)	1,673,042 (87.8%)
20-24	1,517,124 (88.6%)	1,473,302 (86.0%)
16-19	1,098,820 (91.9%)	1,067,299 (89.3%)
12-15	1,050,248 (84.4%)	972,248 (78.2%)

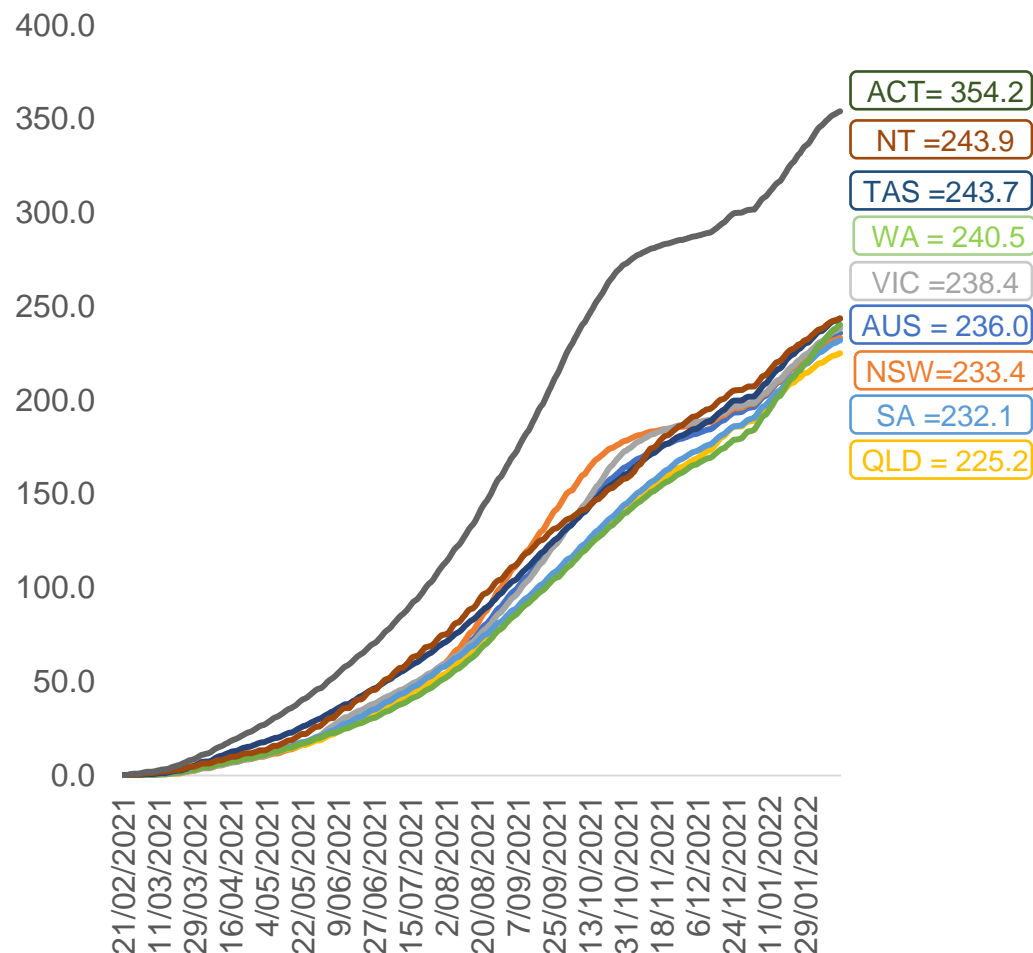


	AUS	ACT	NSW	NT	QLD	SA	TAS	VIC	WA
16 and over - dose 1	19,788,248	349,945	6,278,661	173,211	3,801,214	1,355,929	439,551	5,112,009	2,049,335
16 and over - dose 2	19,401,972	344,879	6,186,155	167,441	3,719,246	1,318,602	428,016	5,040,039	1,987,313
16 and over - population	20,619,959*	344,037	6,565,651	190,571	4,112,707	1,440,400	440,172	5,407,574	2,114,978
16 and over % with dose 1	95.97%	>99%	95.63%	90.89%	92.43%	94.14%	>99%	94.53%	96.90%
16 and over % with dose 2	94.09%	>99%	94.22%	87.86%	90.43%	91.54%	97.24%	93.20%	93.96%
5 to 11 - dose 1	1,094,590	30,346	329,350	12,002	198,676	78,551	27,350	303,885	107,763
5 to 11 - dose 2	10,381	172	4,304	88	1,697	277	50	3,372	361
5 to 11 - population	2,276,638	39,789	716,460	24,750	478,731	148,816	45,033	578,499	244,154
5 to 11 % with dose 1	48.08%	76.27%	45.97%	48.49%	41.50%	52.78%	60.73%	52.53%	44.14%
5 to 11 % with dose 2	0.46%	0.43%	0.60%	0.36%	0.35%	0.19%	0.11%	0.58%	0.15%
12 to 15 - dose 1	1,050,248	20,060	326,090	10,847	207,312	67,914	22,780	275,862	110,049
12 to 15 - dose 2	972,248	19,197	308,023	9,537	188,991	62,280	20,790	261,292	94,217
12 to 15 - population	1,243,990	19,693	390,330	13,060	270,146	82,747	26,308	308,611	132,869
12 to 15 % with dose 1	84.43%	>99%	83.54%	83.06%	76.74%	82.07%	86.59%	89.39%	82.83%
12 to 15 % with dose 2	78.16%	97.48%	78.91%	73.02%	69.96%	75.27%	79.03%	84.67%	70.91%

\*National population will not equal sum of listed jurisdictions due to a small number of people counted in national population residing in some 'other' territories. Sum of state doses will not add to national total as some records are unable to be geocoded to a State or Territory.  
Doses sourced from Australian Immunisation Register, population from ABS ERP June 2020

# Vaccinations by location

Cumulative total doses administered vs eligible state populations\*

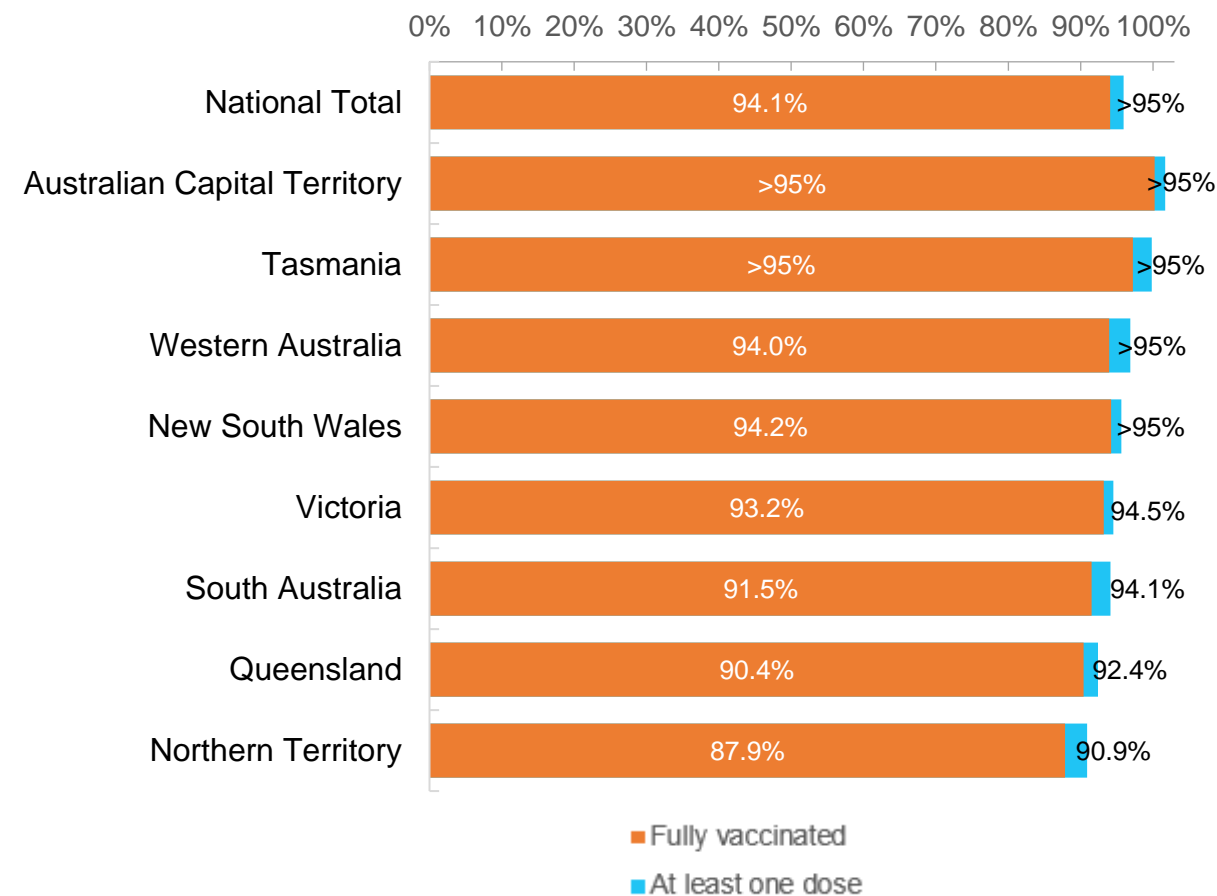


\*Not an indication of percentage vaccinated, numbers will exceed 100 due to multiple doses required per person of the population. All doses are included for those aged 12 and above, and are based on vaccination provider location.

Data as at:  
15 Feb 2022

Australia's COVID-19  
Vaccine Roadmap

First and Second Doses by residential location





# Aboriginal and Torres Strait Islander peoples

## Number of people vaccinated

Data as at:  
15 Feb 2022  
Updated weekly

Australia's COVID-19  
Vaccine Roadmap



**429,831**

people over the age of 16  
have had at least one dose

**82.7%**

of people over the age of 16  
have had at least one dose



**402,335**

people over the age of 16  
are fully vaccinated

**77.4%**

of people over the age of 16 are  
fully vaccinated



**47,215  
(66.6%)**

people aged 12-15 years  
have had at least one dose

### 175 Aboriginal community controlled health services (ACCHS)

0#	50	27	43	12	3	21	19
ACT	NSW	NT	QLD	SA	TAS	VIC	WA

Medicare Address State <sup>##</sup>	Individuals Dose 1	Individuals Dose 1 %	Individuals Dose 2	Individuals Dose 2 %
Australian Capital Territory	4,870	91.3%	4,731	88.7%
New South Wales	134,909	86.5%	131,405	84.2%
Northern Territory	41,631	88.2%	38,436	81.4%
Queensland	113,396	80.0%	105,656	74.5%
South Australia	19,495	78.1%	17,637	70.7%
Tasmania	14,144	87.8%	13,533	84.0%
Victoria	35,147	89.1%	34,208	86.8%
Western Australia	49,922	79.3%	42,743	67.9%
Unknown/Other Territories	16,317	62.8%	13,986	53.9%
<b>Totals</b>	<b>429,831</b>	<b>82.7%</b>	<b>402,335</b>	<b>77.4%</b>

Source: Australian Immunisation Register

\*Identifying as Aboriginal and Torres Strait Islander is optional and the estimated population may be under reported.

\*\*Includes all Aboriginal and Torres Strait Islander peoples who have received a vaccination, not limited to those administered in an ACCHS setting

#ACCHS in the ACT are currently operating as a Commonwealth Vaccine Clinics so not included to avoid double counting

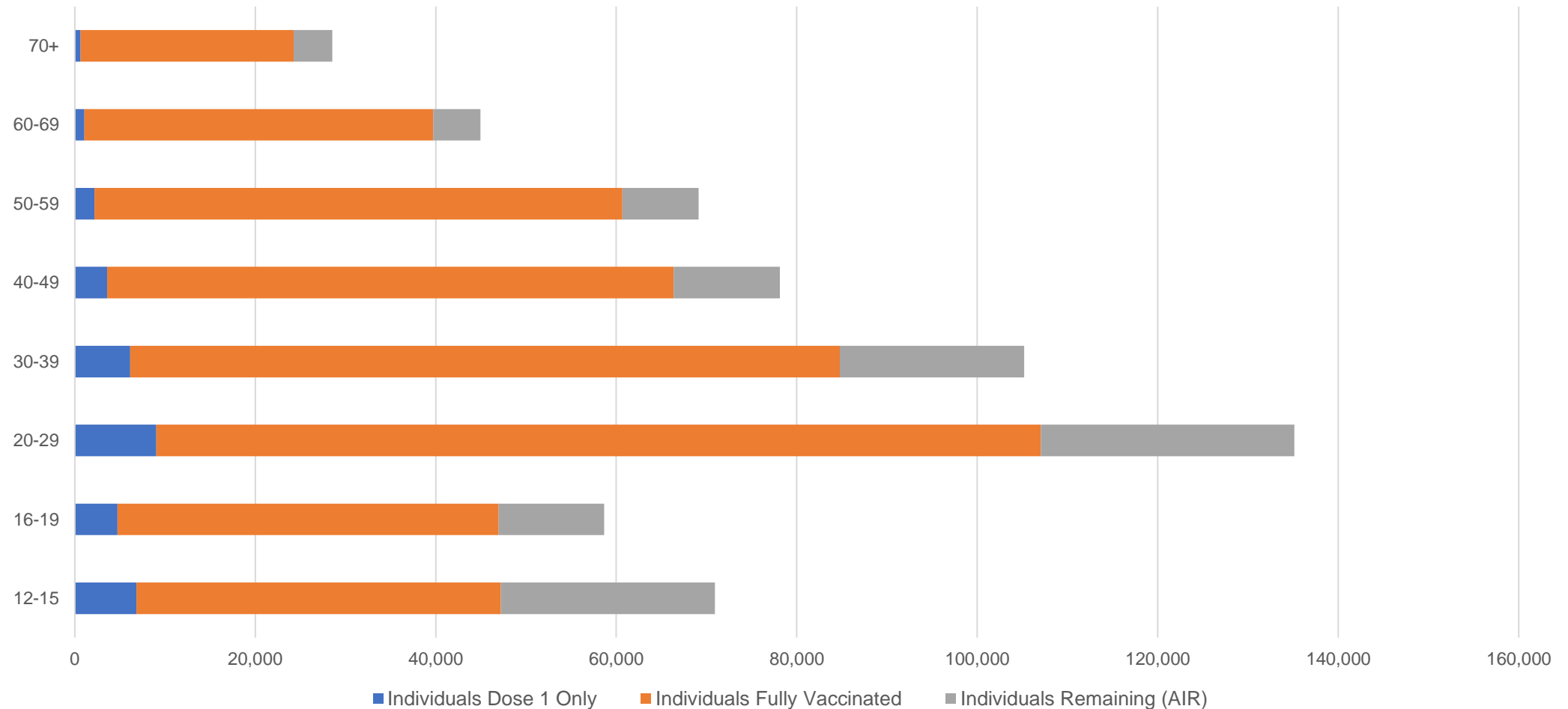
##The above table includes all identified Aboriginal and Torres Strait Islander people who are aged 16 and above by their state of residence.

# Aboriginal and Torres Strait Islander peoples

## Number of people vaccinated by age

Data as at:  
15 Feb 2022  
Updated weekly

Australia's COVID-19  
Vaccine Roadmap



Source: Australian Immunisation Register

# Commonwealth primary care

Data as at:  
15 Feb 2022

Australia's COVID-19  
Vaccine Roadmap



## Primary care vaccine administration sites

<b>5,758</b>	<b>128</b>	<b>175</b>	<b>3,543</b>
GPs	CVCs	ACCHS	Pharmacies



**31,649,979** total vaccine doses administered  
primary care settings as at 15 February  
**+ 128,654** recorded in the last 24 hours

## Primary care vaccinations by provider type

	Doses administered	Daily increase	7 day increase
General Practice* includes other Commonwealth	26,052,808	84,466	552,212
Pharmacy	5,597,171	44,188	277,807

**NSW**  
**11,116,170**  
(+39,277 daily increase)

**VIC**  
**7,895,310**  
(+32,507 daily increase)

**QLD**  
**6,131,957**  
(+23,456 daily increase)

**WA**  
**3,125,206**  
(+18,783 daily increase)

**TAS**  
**572,323**  
(+3,254 daily increase)

**SA**  
**1,871,574**  
(+7,829 daily increase)

**ACT**  
**503,573**  
(+2,138 daily increase)

**NT**  
**190,282**  
(+583 daily increase)

**243,584**

doses administered to persons  
residing in other territories or with  
missing residential information

\*General practice includes Commonwealth Vaccination Clinics, Aboriginal Community Health Centres, Royal Flying Doctor Service and other Commonwealth vaccination facilities

Source: Australian Immunisation Register

Data as at:  
15 Feb 2022

# Commonwealth aged care and disability doses administered



**1,246,315** (+ 780 last 24 hours)

Total vaccine doses administered in aged care and disability facilities as at 15 February

Number of doses administered as part of the Commonwealth aged and disability care rollout

**NSW**  
**553,965**  
(+291 daily increase)

**VIC**  
**237,839**  
(+105 daily increase)

**QLD**  
**196,637**  
(+109 daily increase)

**WA**  
**98,070**  
(+149 daily increase)

**TAS**  
**22,057**  
(+6 daily increase)

**SA**  
**83,263**  
(+22 daily increase)

**ACT**  
**16,203**  
(+17 daily increase)

**NT**  
**7,111**  
(+71 daily increase)

**31,170**

doses administered to persons  
residing in other territories or with  
missing residential information

\*Sourced from the Australian Immunisation Register. Includes all persons vaccinated at participating residential aged care, disability and related industry settings.

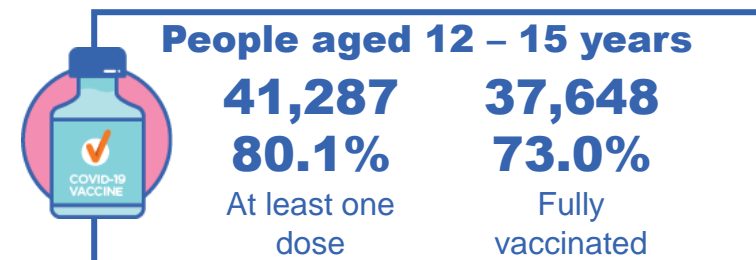
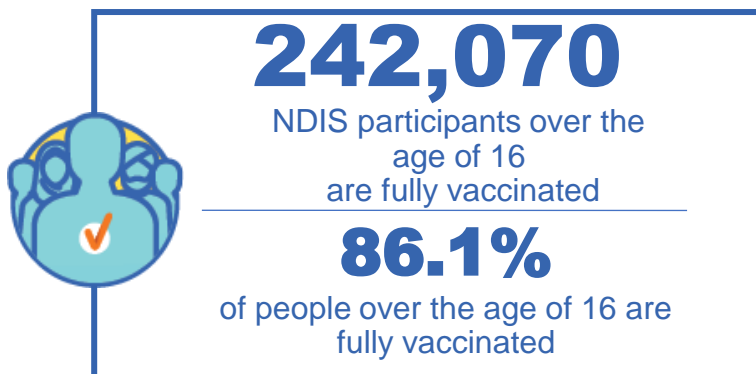
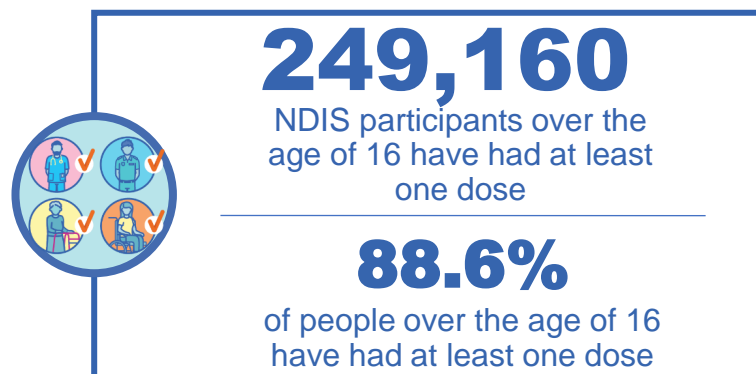
\*\*State level breakdown indicates the residential location and may not align to the state in which the vaccination occurred.

Source: Australian Immunisation Register

# National Disability Insurance Scheme (NDIS) reported vaccinations

Data as at:  
10 February 2022  
Updated weekly

Australia's COVID-19  
Vaccine Roadmap



## NDIS participant vaccinations

	People aged 16+ with at least one dose	People aged 16+ fully vaccinated	% People aged 16+ with at least one dose	% People aged 16+ fully vaccinated
ACT	4,773	4,697	90.8%	89.4%
NSW	77,357	75,976	89.1%	87.5%
NT	2,159	2,047	79.8%	75.7%
QLD	48,748	47,209	87.7%	84.9%
SA	20,210	19,373	86.2%	82.6%
TAS	6,222	5,972	88.4%	84.8%
VIC	66,592	65,256	89.8%	88.0%
WA	23,099	21,540	87.9%	82.0%
National	249,160	242,070	88.6%	86.1%

Source: Linkage between National Disability Insurance Agency data and the Australian Immunisation Register. Total NDIS participant numbers as at 17th October. Australian Immunisation Register data as at 09 February. Includes all participants regardless of residence type.

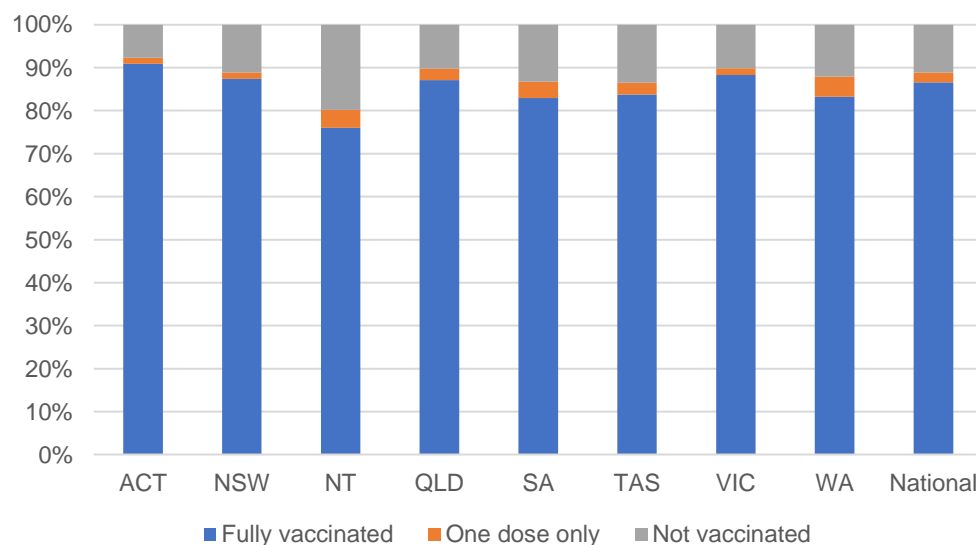
# National Disability Insurance Scheme (NDIS) reported vaccinations

Data as at:  
10 February 2022  
Updated Weekly

Australia's COVID-19  
Vaccine Roadmap

NATIONAL	Total people with at least one dose	People fully vaccinated	Total number of individuals in cohort	% People with at least one dose	% People fully vaccinated
NDIS participants living in disability accommodation	20,319	19,826	22,800	89.1%	87.0%

## NDIS participants in disability and aged care accommodation



Source: Linkage between National Disability Insurance Agency data and the Australian Immunisation Register. Includes participants residing in disability accommodation only.

Source: Total NDIS participant numbers as at 17th October. Participant data as at 08 February. Australian Immunisation Register data as at 09 February. Worker data as at 09 February.

## NDIS workforce vaccinations

	NDIS workers with at least one dose	NDIS workers fully vaccinated	% NDIS workers with at least one dose	% NDIS workers fully vaccinated
NSW	111,229	110,702	97.6%	97.2%
VIC	105,706	105,231	97.8%	97.3%
QLD	65,650	64,782	96.6%	95.3%
WA	31,968	30,550	98.2%	93.8%
SA	33,871	33,089	97.4%	95.1%
TAS	10,596	10,435	99.5%	98.0%
ACT	3,438	3,431	99.5%	99.3%
NT	3,066	3,023	99.4%	98.0%
<b>TOTAL</b>	<b>365,524</b>	<b>361,243</b>	<b>97.6%</b>	<b>96.5%</b>

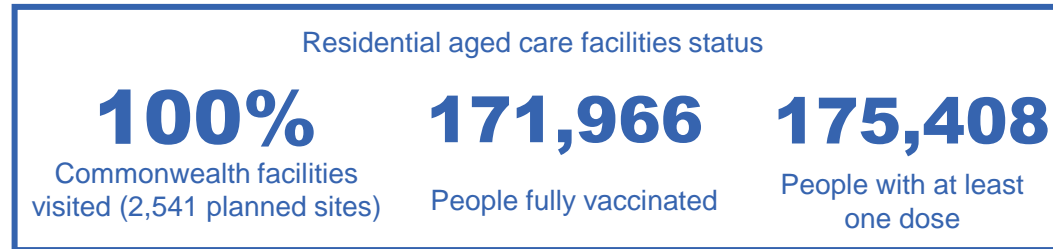
Source: the NDIS Commission has established a requirement for registered NDIS providers who provide intensive disability support services to report on the vaccination status of workers they employ, or otherwise engage, to deliver NDIS-funded supports and services, and who are required to be vaccinated in accordance with in-force state and territory public health orders. The statistics reflect data reported to the NDIS Commission by registered NDIS providers and should be considered indicative and subject to change

Note: Some registered NDIS providers are yet to report on the vaccination status of their workforce. The NDIS Commission is working with those providers around reporting requirements.

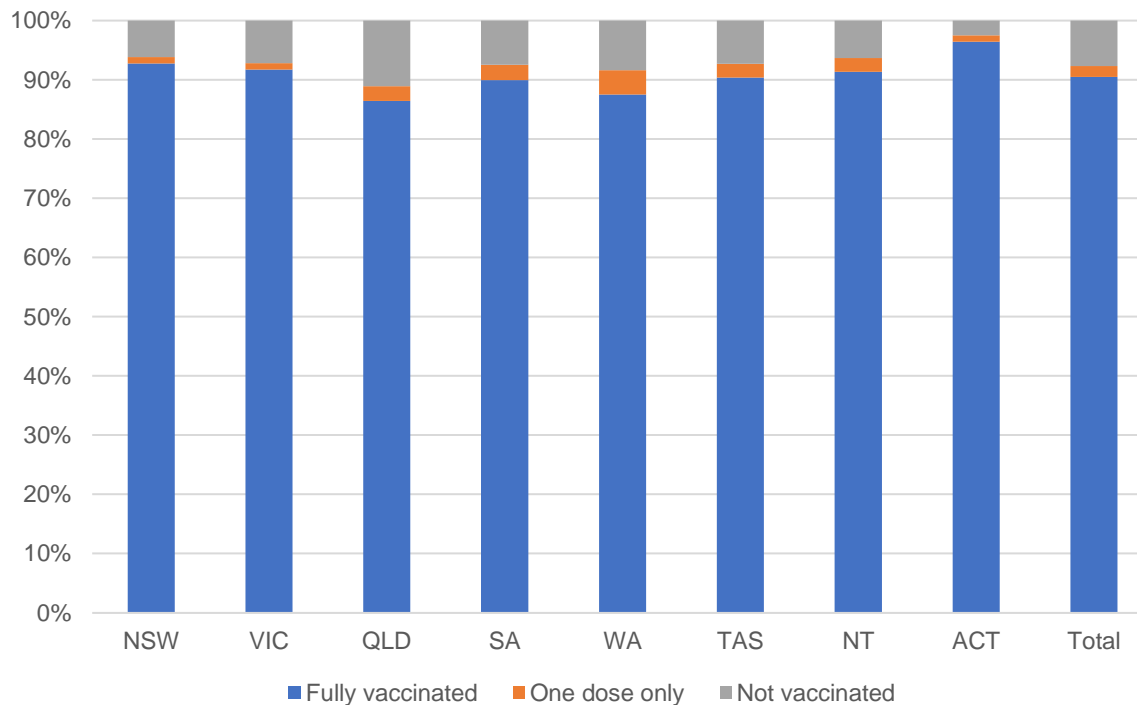
Remaining workers not included include those exempt from vaccination requirements, workers whose vaccination status is not yet verified by the provider (such as workers on leave) and provider reporting anomalies.

# Residential aged care vaccination rollout

Data as at:  
15 Feb 2022



## Aged care resident vaccinations



## Aged care worker vaccinations

Jurisdictions	Total workers with at least one dose	Workers fully vaccinated	% Workers with at least one dose	% Workers fully vaccinated
NSW	78,718	78,691	99.2%	99.1%
VIC	68,817	68,815	98.2%	98.2%
QLD	48,616	48,611	98.5%	98.5%
SA	27,108	27,080	98.8%	98.7%
WA	23,846	23,844	99.4%	99.4%
TAS	7,646	7,646	100.0%	100.0%
NT	874	874	100.0%	100.0%
ACT	3,027	3,027	100.0%	100.0%
Total	258,652	258,588	98.8%	98.8%

Source: My Aged Care Portal vaccination progress

\*Status updates are provided by facilities at least once per week. Reporting is updated Monday to Friday to encompass different facility updates being made on different days.

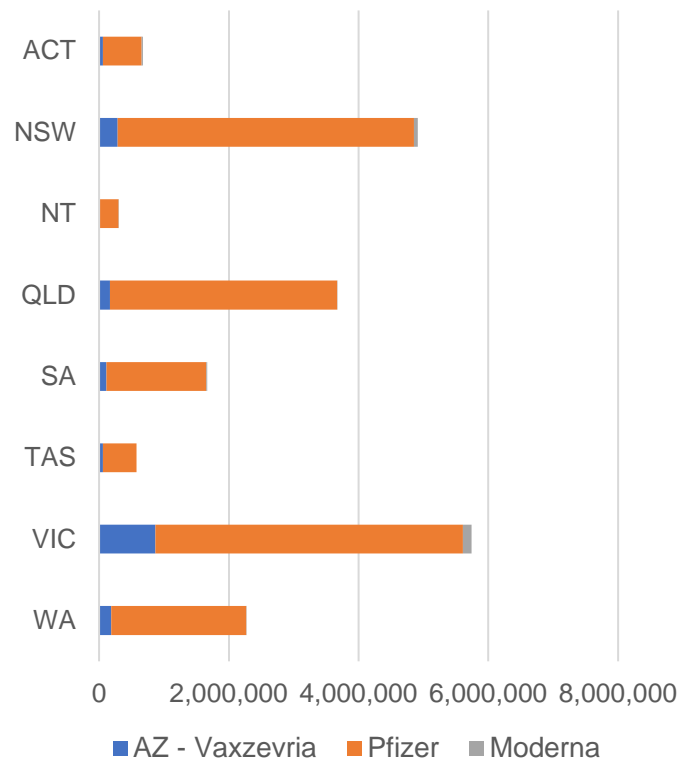
Data is sourced directly from Aged Care Service Providers and is not drawn or closely aligned with data from AIR due to inconsistencies and potential lags in uploading of records.



Data as at:  
15 Feb 2022

## Jurisdiction administered

Total vaccine doses administered in State and Territory clinics as at 15 February



**19,804,810** total vaccine doses administered  
in State and Territory clinics as at 15 February  
+ **32,306** recorded in the last 24 hours  
+ **272,910** recorded in the last 7 days

**NSW**  
**4,913,958**  
(+3,787 daily  
increase)

**VIC**  
**5,740,858**  
(+10,374 daily  
increase)

**QLD**  
**3,668,709**  
(+3,833 daily  
increase)

**WA**  
**2,269,415**  
(+6,239 daily  
increase)

**TAS**  
**574,425**  
(+912 daily  
increase)

**SA**  
**1,666,549**  
(+3,224 daily  
increase)

**ACT**  
**672,530**  
(+3,140 daily  
increase)

**NT**  
**298,366**  
(+797 daily  
increase)

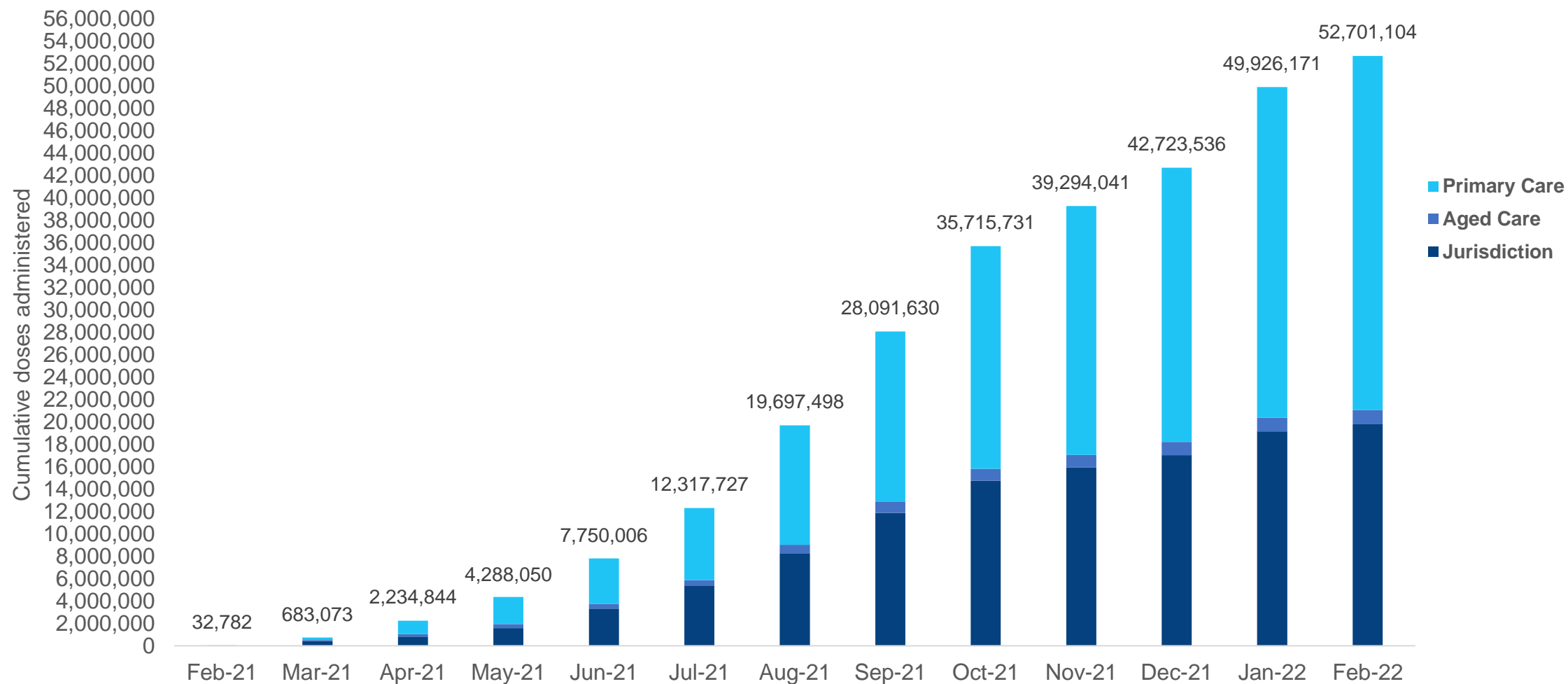
\*Sourced from the Australian Immunisation Register. Numbers are calculated as difference in daily cumulative reported numbers to allow for historical corrections.

Source: Australian Immunisation Register



# Cumulative doses administered by channel

Data as at:  
15 Feb 2022



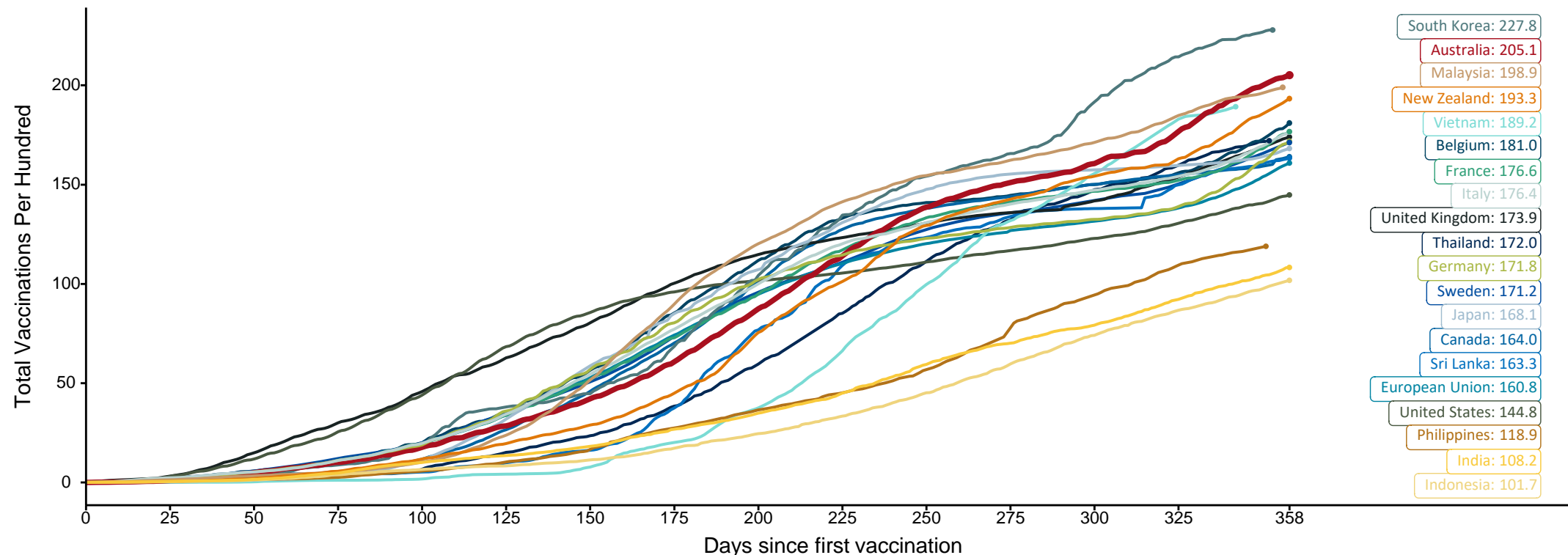
Source: Australian Immunisation Register

# Doses at equivalent stages of rollout (Day 358)

Data as at:  
15 Feb 2022

The x-axis is truncated at the length of Australia's vaccination program. Countries with intermittent reporting have had their doses per 100 imputed to Australia's current stage of rollout. Israel excluded as it is beyond scale of the graph

Cumulative doses administered (15 Feb): **52,701,104**

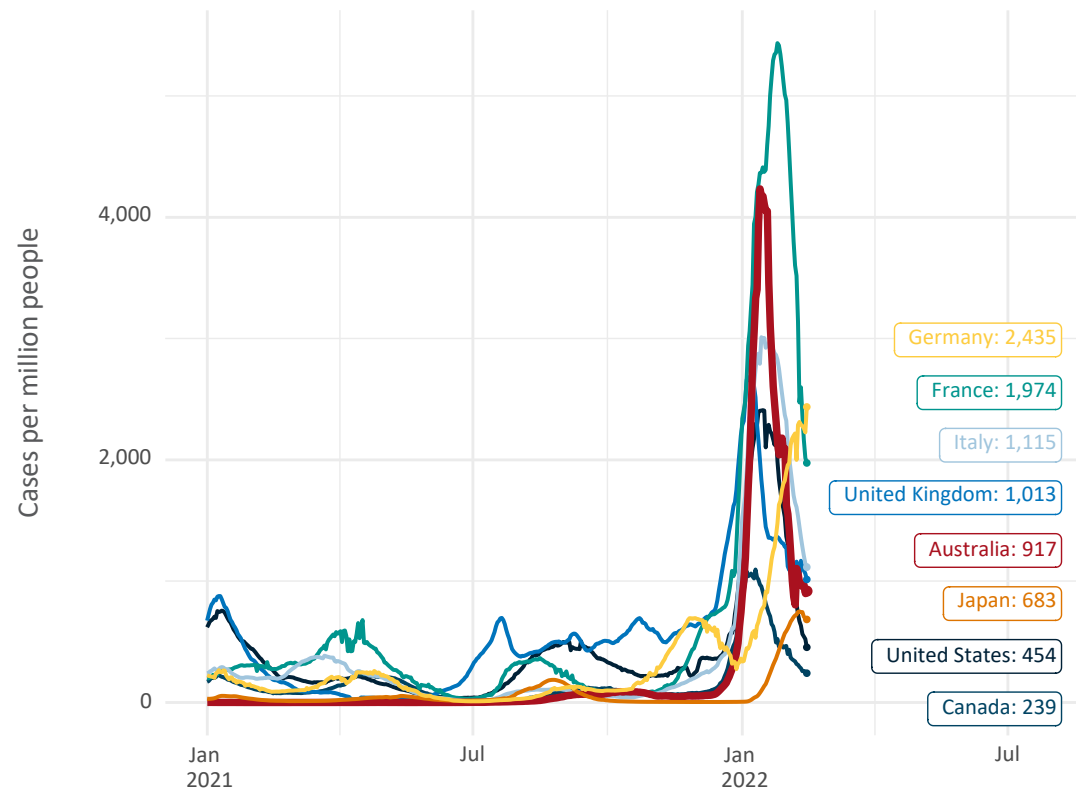


Note: From 15 September 2021, data for Australia includes all doses administered to people 12 and over. Prior to 15 September, data was for 16 and over  
Due to data revisions, Singapore has been removed from the chart  
Source: Department of Health (Australia), Our World in Data (international)  
Latest data: 15 February

Data as at:  
15 Feb 2022

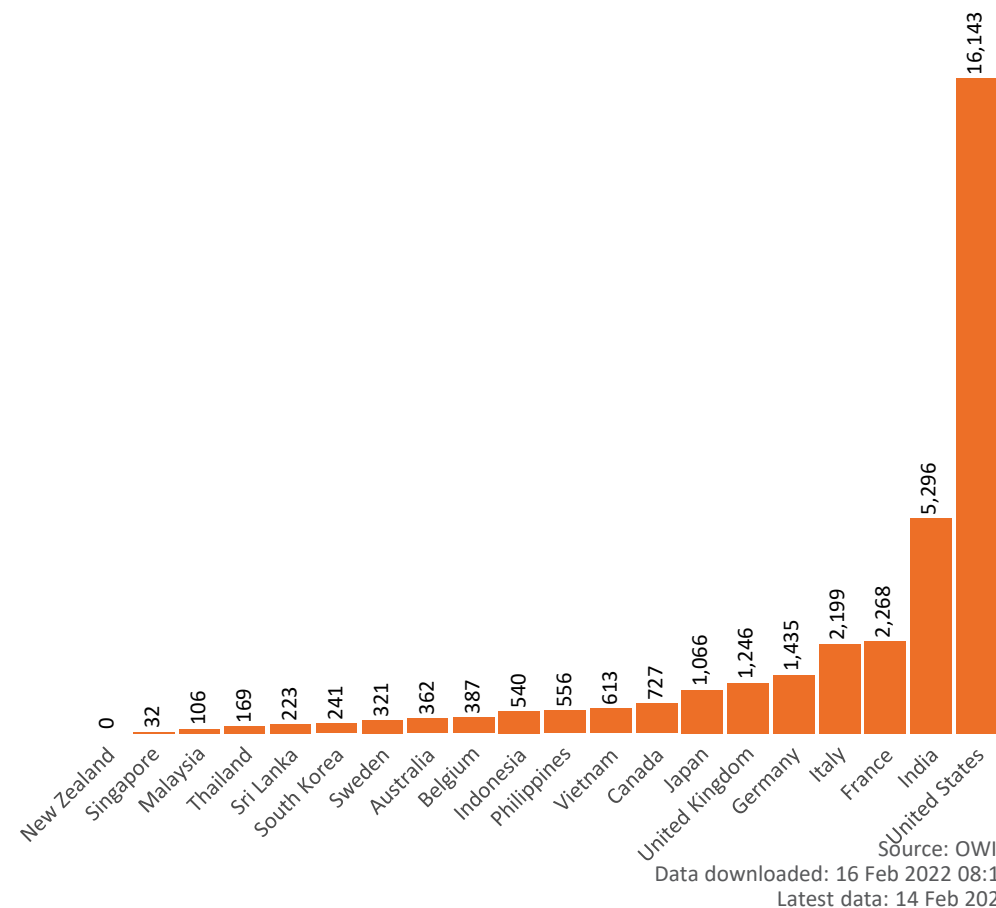
# International data – COVID-19

New daily cases per million in 2021, Australia and G7 countries  
Smoothed - 7 day average



Source: OWID  
Data downloaded: 16 Feb 2022 08:15  
Latest data: 14 Feb 2022

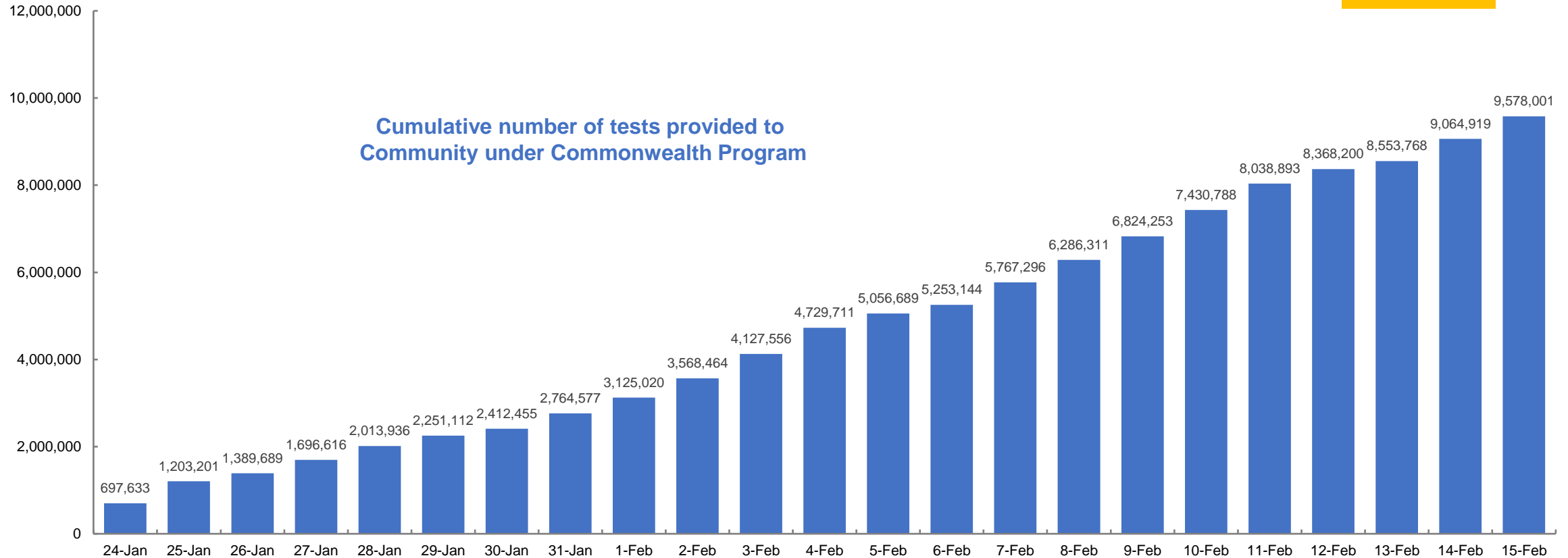
COVID-19 deaths in past 7 days - Australia and select countries



Data as at:  
15 Feb 2022

## Concessional rapid antigen test program

**5,310 pharmacies** have delivered over **9.5 million rapid antigen tests** to more than **1.7 Million eligible concession card holders (to 10 Feb)** under the Government's concessional rapid antigen test program.



# Pandemic Response Payments

Australia's COVID-19  
Vaccine Roadmap

Data as at midnight:  
13 Feb 2022  
Updated weekly



<b>COVID Disaster Payment:</b>	5.89 million claims received - 2.19 million individuals paid a total of \$12.59 billion.
<b>\$200 Income Support Payment:</b>	353,000 claims received - 183,000 individuals paid a total of \$268.9 million.
<b>Pandemic Leave Disaster Payment:</b>	974,000 claims received - 674,000 individuals paid a total of \$729.6 million.



## COVID Disaster Payment

assisting during a  
lockdown event in a  
Commonwealth hotspot.

## Income Support Payment \$200

for income support  
recipients who lost at  
least 8 hours of work.

## Pandemic Leave Disaster Payment

for those who have to  
self-isolate, quarantine  
or care.

For more information visit:  
[servicesaustralia.gov.au](https://servicesaustralia.gov.au)

## COVID-19 DISASTER PAYMENTS

### Northern Territory

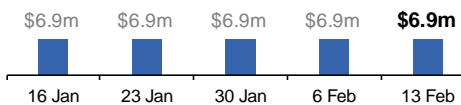
Lockdown (#3) from 16 Nov to 22 Nov  
Claiming period ended 27 Dec

**7,500 people have received at least  
one COVID Disaster Payment.**

**\$6.9m paid out as at 13 Feb 2022.**

**\$0 paid in initial payments in the week  
ending 13 Feb 2022.**

Cumulative payments made by Territory since  
activation on 25 Aug 2021.



### Victoria

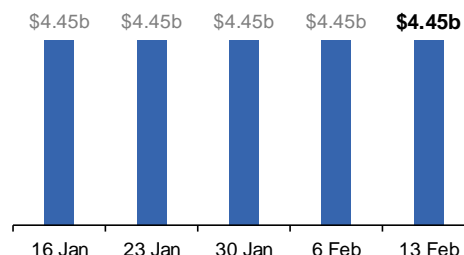
Lockdown (#6) from 6 Aug to 28 Oct  
Claiming period ended 9 Dec

**745,000 people have received at least  
one COVID Disaster Payment.**

**\$4.45b paid out as at 13 Feb 2022.**

**\$10,000 paid in initial and reoccurring  
payments in the week ending  
13 Feb 2022.**

Cumulative payments made by State since  
activation on 8 Jun 2021.



### New South Wales

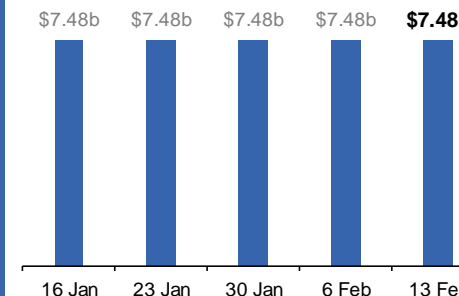
Lockdown from 24 Jun to 10 Oct  
Claiming period ended 27 Nov

**1.08m people have received at least  
one COVID Disaster Payment.**

**\$7.48b paid out as at 13 Feb 2022.**

**\$23,000 paid in initial and reoccurring  
payments in the week ending  
13 Feb 2022.**

Cumulative payments made by State since  
activation on 1 Jul 2021.



### Australian Capital Territory

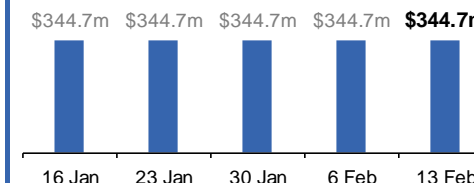
Lockdown from 12 Aug to 14 Oct  
Claiming period ended 25 Nov

**65,000 people have received at least  
one COVID Disaster Payment.**

**\$344.7m paid out as at 13 Feb 2022.**

**\$3,000 paid in initial and reoccurring  
payments in the week ending  
13 Feb 2022.**

Cumulative payments made by Territory since  
activation on 20 Aug 2021.



# Pandemic Response Payments (continued)

Data as at midnight:  
13 Feb 2022  
Updated weekly

## COVID-19 DISASTER PAYMENTS

### Tasmania

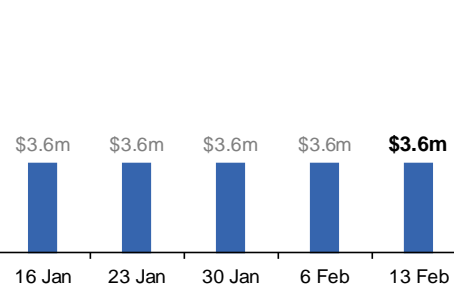
Lockdown from 15 Oct to 18 Oct  
Claiming period ended 12 Nov

**6,900 people have received at least one COVID Disaster Payment.**

**\$3.6m paid out as at 13 Feb 2022.**

**\$0 paid in initial and reoccurring payments in the week ending 13 Feb 2022.**

Cumulative payments made by State since activation on 22 Oct 2021.



### Queensland

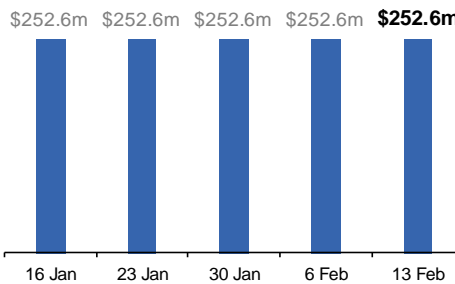
Lockdown from 31 Jul to 11 Aug  
Claiming period ended 28 Aug

**196,000 people have received at least one COVID Disaster Payment.**

**\$252.6m paid out as at 13 Feb 2022.**

**\$0 paid in initial and reoccurring payments in the week ending 13 Feb 2022.**

Cumulative payments made by State since activation on 7 Aug 2021.



### South Australia

Lockdown from 21 to 27 Jul  
Claiming period ended 17 Aug

**86,000 people have received at least one COVID Disaster Payment.**

**\$48.2m paid out as at 13 Feb 2022.**

**\$0 paid in initial and reoccurring payments in the week ending 13 Feb 2022.**

Cumulative payments made by State since activation on 28 Jul 2021.

