



**Australian Government**  
**Operation COVID Shield**

# COVID-19 Vaccine Rollout

15 February 2022

Data as at:  
14 Feb 2022

# Total vaccine doses



**52,539,364** total vaccine doses administered nationally as at 14 February  
**+167,929** recorded in the last 24 hours



**19,782,999**

people have had at least one dose

**>95%**

of people over the age of 16 have had at least one dose



**19,393,080**

people are fully vaccinated

**94.1%**

of people over the age of 16 are fully vaccinated



**10,178,057**

people over the age of 16 who have received more than two doses

**NSW**  
**16,522,419**  
(+46,600 daily increase)

**VIC**  
**13,893,050**  
(+47,187 daily increase)

**QLD**  
**10,047,460**  
(+25,196 daily increase)

**WA**  
**5,488,927**  
(+27,503 daily increase)

**TAS**  
**1,160,861**  
(+3,600 daily increase)

**SA**  
**3,603,286**  
(+10,467 daily increase)

**ACT**  
**1,315,313**  
(+5,834 daily increase)

**NT**  
**508,048**  
(+1,542 daily increase)

\*Administration state breakdown indicates state in which a vaccine was administered

\*\*Overall dose count includes instances of more than two doses per person in a small number of cases.

Source: Australian Immunisation Register

# Booster Vaccinations

Data as at:  
14 Feb 2022



**10,178,057** total people over the age of 16 years old  
who have received more than two doses nationally

**+144,507** people who have received more than two doses  
nationally in the last 24 hours

**NSW**  
**3,223,964**  
(42,311 daily  
increase)

**VIC**  
**2,765,149**  
(42,936 daily  
increase)

**QLD**  
**1,798,669**  
(21,049 daily  
increase)

**WA**  
**1,084,756**  
(21,225 daily  
increase)

**TAS**  
**219,121**  
(2,906 daily  
increase)

**SA**  
**721,538**  
(8,734 daily  
increase)

**ACT**  
**215,983**  
(2,933 daily  
increase)

**NT**  
**80,269**  
(1,188 daily  
increase)

**68,608** doses administered to persons  
residing in other territories or with  
missing residential information

Source: Australian Immunisation Register

Data as at:  
14 Feb 2022

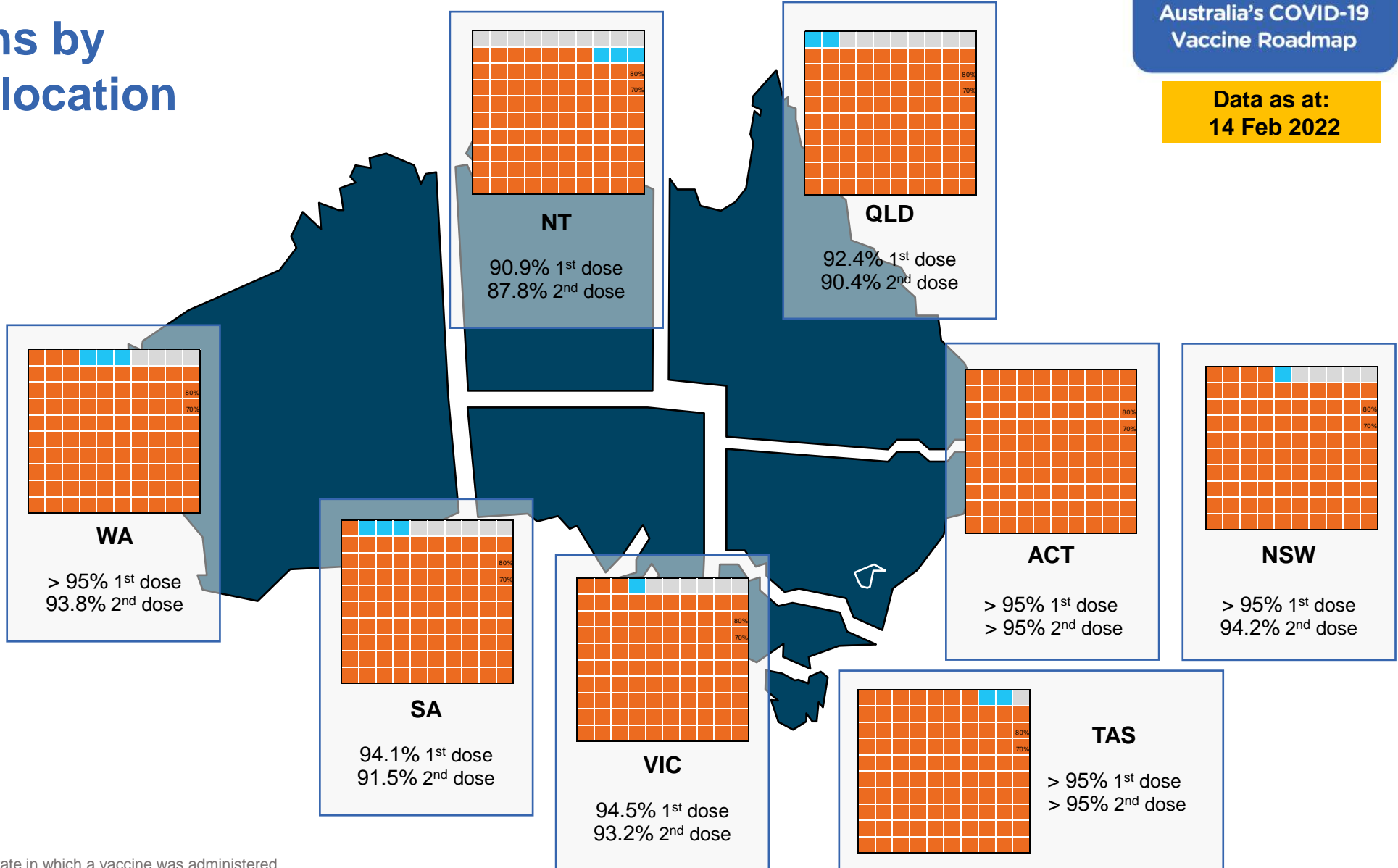
# Vaccinations by residential location

## First doses

Age	Today	4 weeks ago	8 weeks ago
16+	>95%	>95%	94.3%
50+	>95%	>95%	>95%
70+	>95%	>95%	>95%

## Fully vaccinated

Age	Today	4 weeks ago	8 weeks ago
16+	94.1%	92.9%	91.1%
50+	>95%	>95%	>95%
70+	>95%	>95%	>95%



\*Residential state may differ from the state in which a vaccine was administered

# Commonwealth and Jurisdiction vaccine doses administered

Data as at:  
14 Feb 2022



**52,539,364** total vaccine doses administered nationally as at 14 February  
+ **167,929** recorded in the last 24 hours



**19,772,504** doses administered by state and territory facilities  
+ **35,223** recorded in the last 24 hours

NSW	Jurisdictions	Commonwealth
Cumulative	4,910,171	11,612,248
Daily increase	4,204	42,396

TAS	Jurisdictions	Commonwealth
Cumulative	573,513	587,348
Daily increase	1,496	2,104

VIC	Jurisdictions	Commonwealth
Cumulative	5,730,484	8,162,566
Daily increase	12,308	34,879

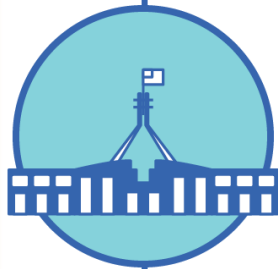
SA	Jurisdictions	Commonwealth
Cumulative	1,663,325	1,939,961
Daily increase	3,281	7,186

QLD	Jurisdictions	Commonwealth
Cumulative	3,664,876	6,382,584
Daily increase	3,216	21,980

ACT	Jurisdictions	Commonwealth
Cumulative	669,390	645,923
Daily increase	3,246	2,588

WA	Jurisdictions	Commonwealth
Cumulative	2,263,176	3,225,751
Daily increase	6,658	20,845

NT	Jurisdictions	Commonwealth
Cumulative	297,569	210,479
Daily increase	814	728



**32,766,860** doses administered by commonwealth facilities  
+ **132,706** recorded in the last 24 hours

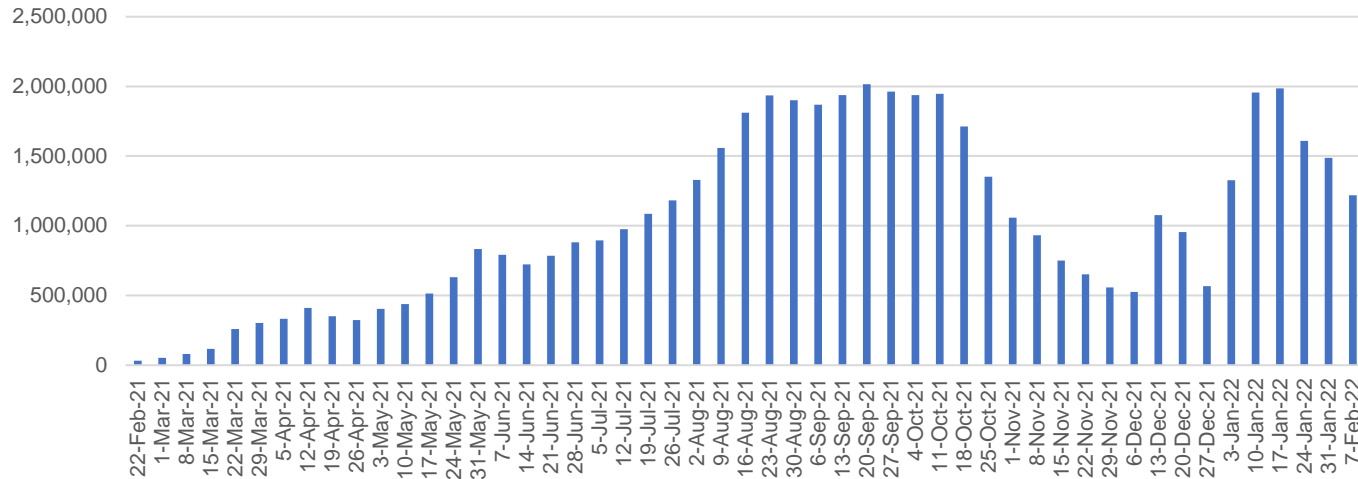
**31,521,325** total vaccine doses administered in primary care settings  
**1,245,535** total vaccine doses administered in aged care and disability settings

# Vaccine milestone charts

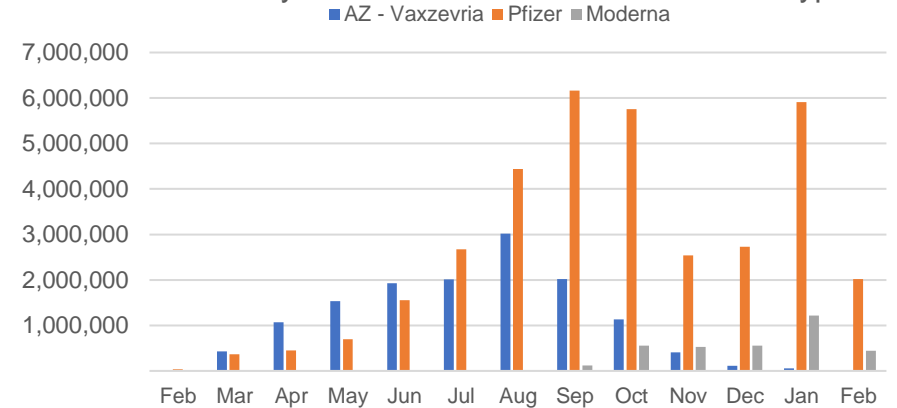
Data as at:  
14 Feb 2022

Australia's COVID-19  
Vaccine Roadmap

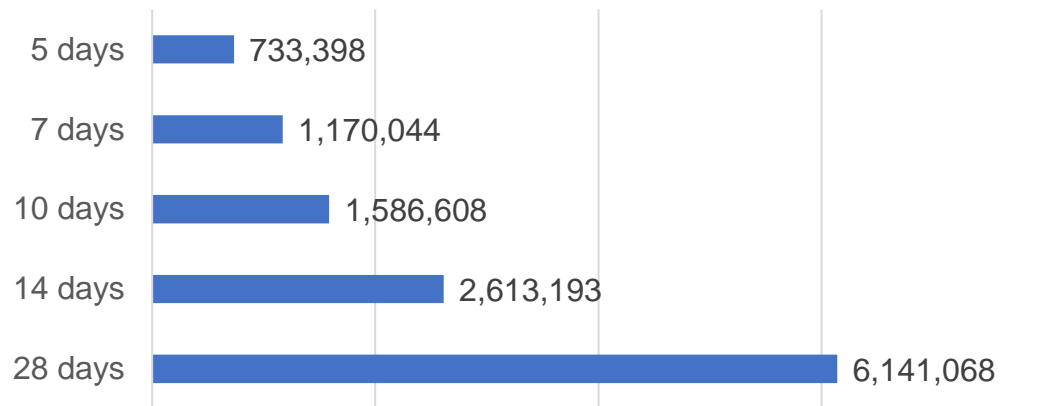
Doses Administered by Week



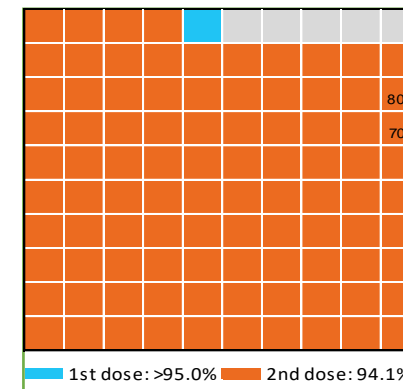
Doses by administration month and vaccine type



Doses Reported



Eligible population percentage coverage



\*Sourced from the Australian Immunisation Register.

\*Each square represents 1% of the national population. Squares are filled as milestones are achieved.

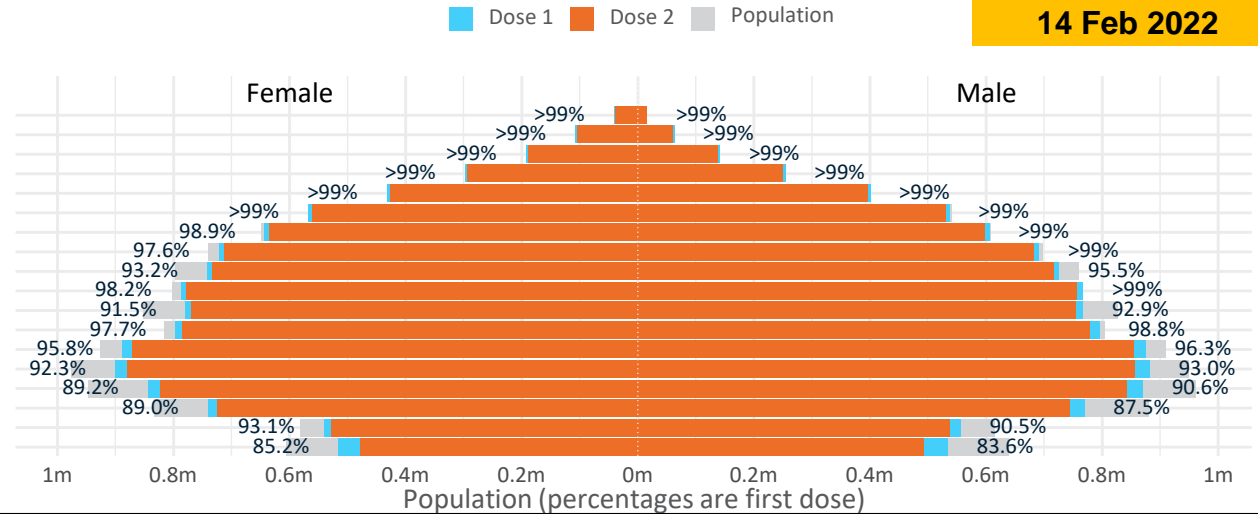
# Doses by age and sex

First and second doses by age and sex

	16+	50+	12-15	5-11
Dose 1	95.94% (19,782,999 doses / 20,619,959 people)	>99% (8,744,203 doses / 8,749,703 people)	84.40% (1,049,893 doses / 1,243,990 people)	47.87% (1,089,785 doses / 2,276,638 people)
Dose 2	94.05% (19,393,080 doses / 20,619,959 people)	98.53% (8,620,692 doses / 8,749,703 people)	78.08% (971,317 doses / 1,243,990 people)	0.43% (9,816 doses / 2,276,638 people)

Data as at:  
14 Feb 2022

Age	Dose 1	Dose 2
95+	57,676 (>99%)	54,078 (>99%)
90-94	170,654 (>99%)	164,252 (>99%)
85-89	334,762 (>99%)	326,402 (>99%)
80-84	552,228 (>99%)	543,189 (>99%)
75-79	832,969 (>99%)	822,795 (>99%)
70-74	1,105,676 (>99%)	1,092,929 (98.9%)
65-69	1,250,102 (>99%)	1,234,372 (98.1%)
60-64	1,414,803 (98.5%)	1,396,621 (97.2%)
55-59	1,469,148 (94.4%)	1,450,327 (93.2%)
50-54	1,556,185 (>99%)	1,535,727 (98.2%)
45-49	1,547,526 (92.3%)	1,524,384 (90.9%)
40-44	1,594,155 (98.4%)	1,565,257 (96.6%)
35-39	1,767,431 (96.3%)	1,729,414 (94.2%)
30-34	1,790,514 (93.1%)	1,742,745 (90.6%)
25-29	1,724,691 (90.5%)	1,672,085 (87.7%)
20-24	1,516,432 (88.6%)	1,472,310 (86.0%)
16-19	1,098,047 (91.8%)	1,066,193 (89.2%)
12-15	1,049,893 (84.4%)	971,317 (78.1%)



	AUS	ACT	NSW	NT	QLD	SA	TAS	VIC	WA
16 and over - dose 1	19,782,999	349,884	6,277,661	173,171	3,800,033	1,355,490	439,417	5,110,761	2,048,113
16 and over - dose 2	19,393,080	344,828	6,185,039	167,346	3,717,125	1,317,772	427,764	5,038,754	1,984,187
16 and over - population	20,619,959*	344,037	6,565,651	190,571	4,112,707	1,440,400	440,172	5,407,574	2,114,978
16 and over % with dose 1	95.94%	>99%	95.61%	90.87%	92.40%	94.11%	>99%	94.51%	96.84%
16 and over % with dose 2	94.05%	>99%	94.20%	87.81%	90.38%	91.49%	97.18%	93.18%	93.82%
5 to 11 - dose 1	1,089,785	30,185	327,958	11,940	197,900	78,268	27,311	302,796	106,801
5 to 11 - dose 2	9,816	163	4,049	82	1,604	82	50	3,207	335
5 to 11 - population	2,276,638	39,789	716,460	24,750	478,731	148,816	45,033	578,499	244,154
5 to 11 % with dose 1	47.87%	75.86%	45.77%	48.24%	41.34%	52.59%	60.65%	52.34%	43.74%
5 to 11 % with dose 2	0.43%	0.41%	0.57%	0.33%	0.34%	0.18%	0.11%	0.55%	0.14%
12 to 15 - dose 1	1,049,893	20,052	326,041	10,851	207,257	67,878	22,770	275,822	109,873
12 to 15 - dose 2	971,317	19,195	307,941	9,537	188,742	62,189	20,758	261,258	93,778
12 to 15 - population	1,243,990	19,693	390,330	13,060	270,146	82,747	26,308	308,611	132,869
12 to 15 % with dose 1	84.40%	>99%	83.53%	83.09%	76.72%	82.03%	86.58%	89.38%	82.69%
12 to 15 % with dose 2	78.08%	97.47%	78.89%	73.02%	69.87%	75.16%	78.90%	84.66%	70.58%

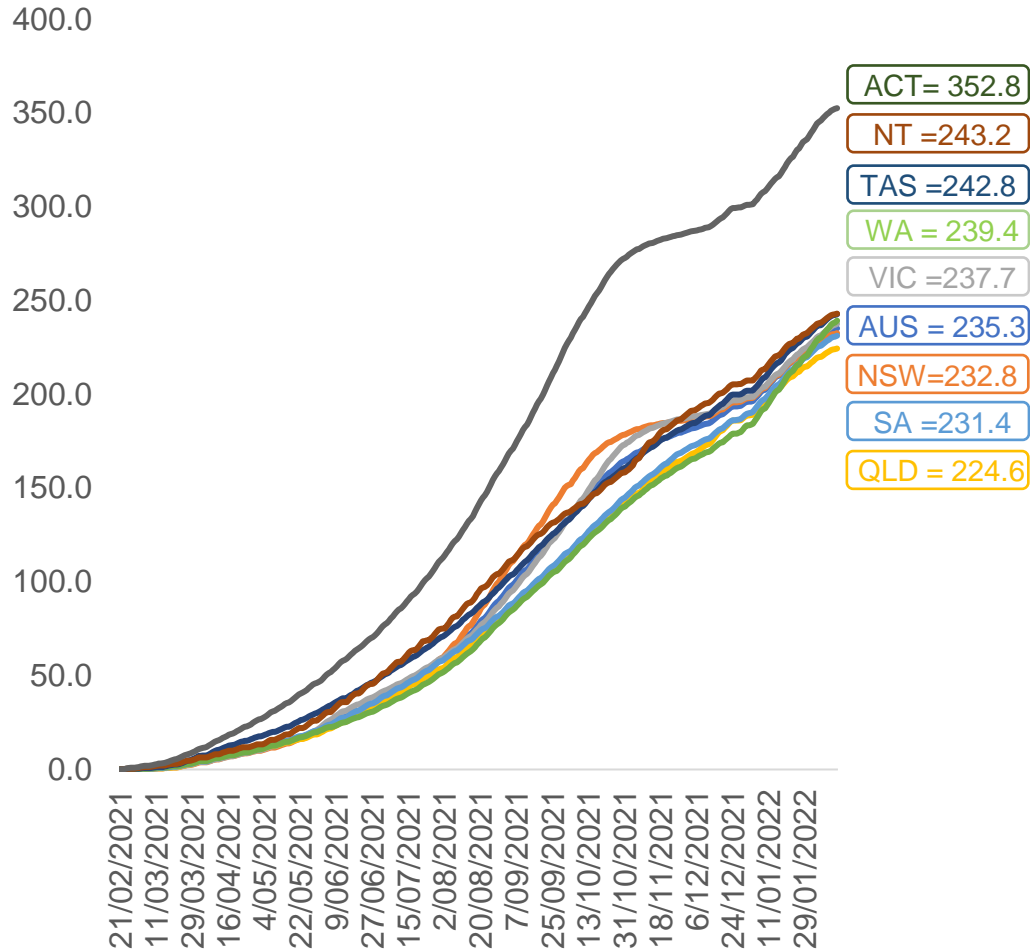
\*National population will not equal sum of listed jurisdictions due to a small number of people counted in national population residing in some 'other' territories. Sum of state doses will not add to national total as some records are unable to be geocoded to a State or Territory.  
Doses sourced from Australian Immunisation Register, population from ABS ERP June 2020

# Vaccinations by location

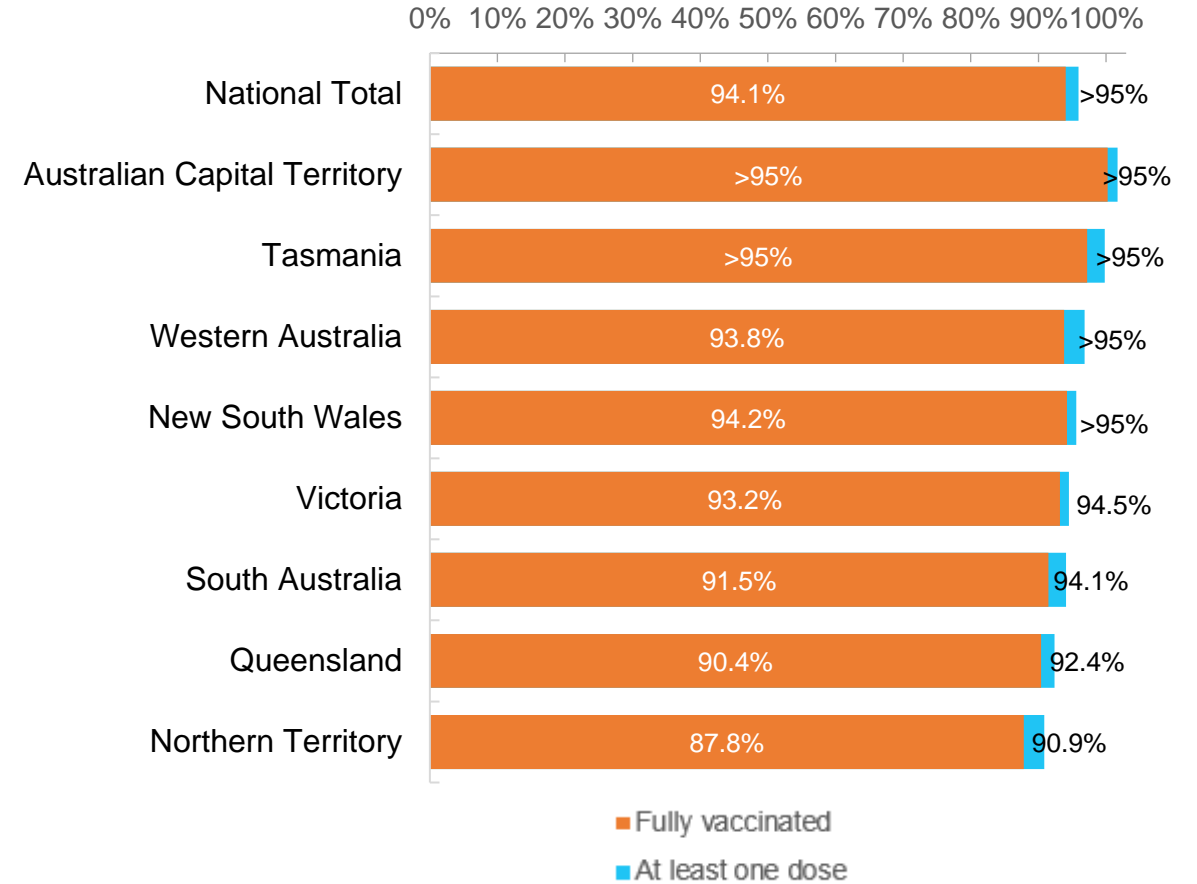
Data as at:  
14 Feb 2022

Australia's COVID-19  
Vaccine Roadmap

Cumulative total doses administered vs eligible state populations\*



First and Second Doses by residential location



\*Not an indication of percentage vaccinated, numbers will exceed 100 due to multiple doses required per person of the population. All doses are included for those aged 12 and above, and are based on vaccination provider location.



# Aboriginal and Torres Strait Islander peoples

## Number of people vaccinated

Data as at:  
08 Feb 2022  
Updated weekly

Australia's COVID-19  
Vaccine Roadmap



**428,426**

people over the age of 16  
have had at least one dose

**82.3%**

of people over the age of 16  
have had at least one dose



**398,952**

people over the age of 16  
are fully vaccinated

**76.6%**

of people over the age of 16 are  
fully vaccinated



**46,782  
(65.9%)**

people aged 12-15 years  
have had at least one dose

### 175 Aboriginal community controlled health services (ACCHS)

0#	50	27	43	12	3	21	19
<b>ACT</b>	<b>NSW</b>	<b>NT</b>	<b>QLD</b>	<b>SA</b>	<b>TAS</b>	<b>VIC</b>	<b>WA</b>

Medicare Address State <sup>##</sup>	Individuals Dose 1	Individuals Dose 1 %	Individuals Dose 2	Individuals Dose 2 %
Australian Capital Territory	4,870	91.1%	4,736	88.6%
New South Wales	135,151	86.4%	131,547	84.1%
Northern Territory	41,456	87.8%	38,065	80.6%
Queensland	112,908	79.6%	104,458	73.6%
South Australia	19,428	77.7%	17,458	69.8%
Tasmania	14,252	87.6%	13,572	83.4%
Victoria	35,192	89.1%	34,228	86.6%
Western Australia	49,049	77.8%	41,228	65.4%
Unknown/Other Territories	16,120	62.2%	13,660	52.7%
<b>Totals</b>	<b>428,426</b>	<b>82.3%</b>	<b>398,952</b>	<b>76.6%</b>

Source: Australian Immunisation Register

\*Identifying as Aboriginal and Torres Strait Islander is optional and the estimated population may be under reported.

\*\*Includes all Aboriginal and Torres Strait Islander peoples who have received a vaccination, not limited to those administered in an ACCHS setting

#ACCHS in the ACT are currently operating as a Commonwealth Vaccine Clinics so not included to avoid double counting

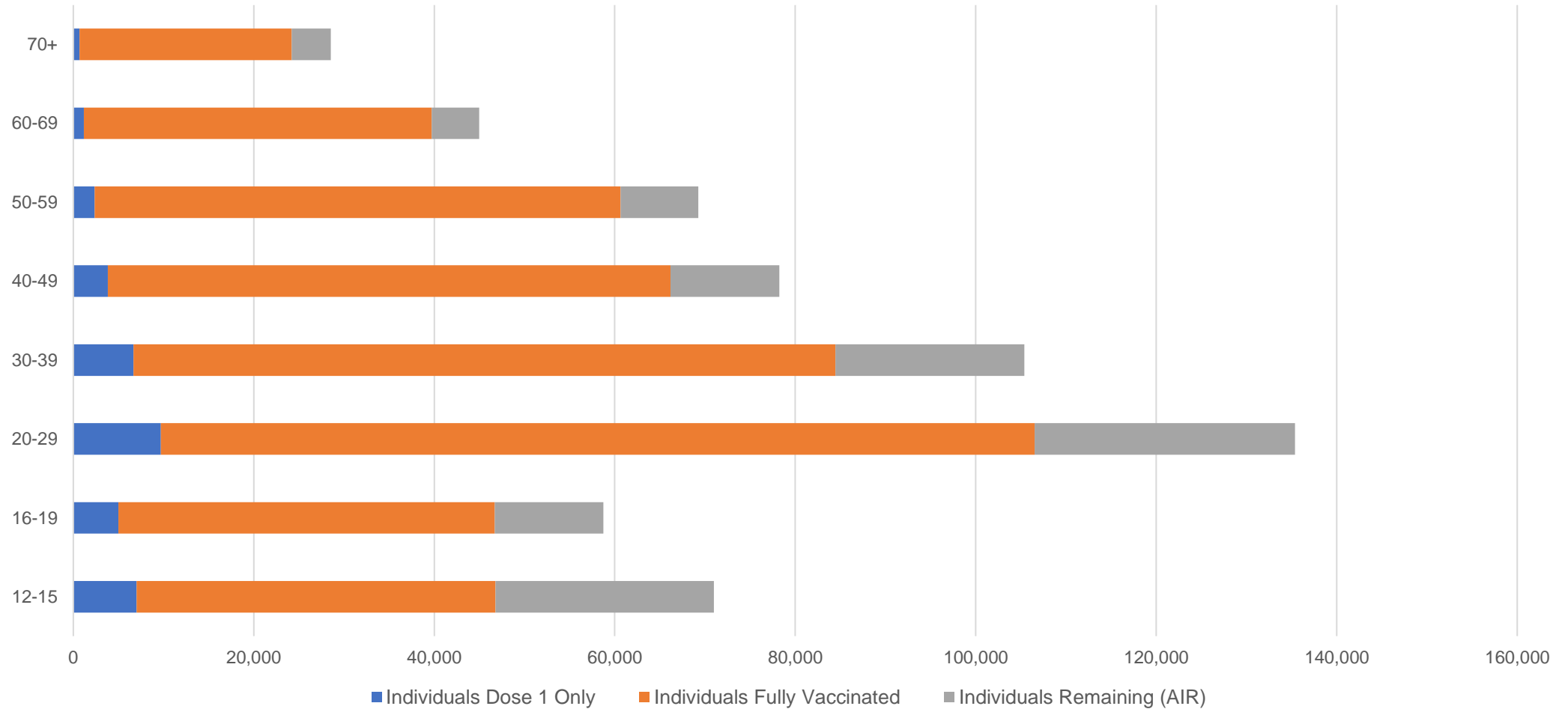
##The above table includes all identified Aboriginal and Torres Strait Islander people who are aged 16 and above by their state of residence.

# Aboriginal and Torres Strait Islander peoples

## Number of people vaccinated by age

Data as at:  
08 Feb 2022  
Updated weekly

Australia's COVID-19  
Vaccine Roadmap



Source: Australian Immunisation Register

# Commonwealth primary care

Data as at:  
14 Feb 2022

Australia's COVID-19  
Vaccine Roadmap



## Primary care vaccine administration sites

<b>5,758</b>	<b>128</b>	<b>175</b>	<b>3,543</b>
GPs	CVCs	ACCHS	Pharmacies



**31,521,325** total vaccine doses administered  
primary care settings as at 14 February  
**+ 132,005** recorded in the last 24 hours

## Primary care vaccinations by provider type

	Doses administered	Daily increase	7 day increase
<b>General Practice*</b> includes other Commonwealth	25,968,342	88,363	583,035
<b>Pharmacy</b>	5,552,983	43,642	289,533

**NSW**  
**11,076,893**  
(+42,185 daily increase)

**VIC**  
**7,862,803**  
(+34,343 daily increase)

**QLD**  
**6,108,501**  
(+21,997 daily increase)

**WA**  
**3,106,423**  
(+20,602 daily increase)

**TAS**  
**569,069**  
(+2,144 daily increase)

**SA**  
**1,863,745**  
(+7,128 daily increase)

**ACT**  
**501,435**  
(+2,309 daily increase)

**NT**  
**189,699**  
(+649 daily increase)

**242,757**

doses administered to persons  
residing in other territories or with  
missing residential information

\*General practice includes Commonwealth Vaccination Clinics, Aboriginal Community Health Centres, Royal Flying Doctor Service and other Commonwealth vaccination facilities

Source: Australian Immunisation Register

Data as at:  
14 Feb 2022

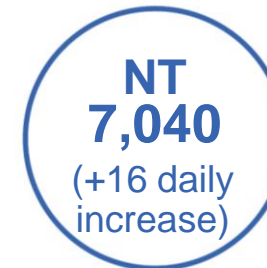
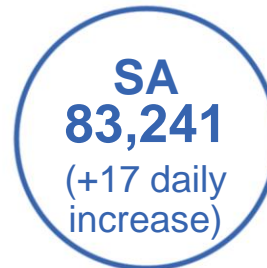
# Commonwealth aged care and disability doses administered



**1,245,535** (+ 701 last 24 hours)

Total vaccine doses administered in aged care and disability facilities as at 14 February

Number of doses administered as part of the Commonwealth aged and disability care rollout



**31,160**

doses administered to persons residing in other territories or with missing residential information

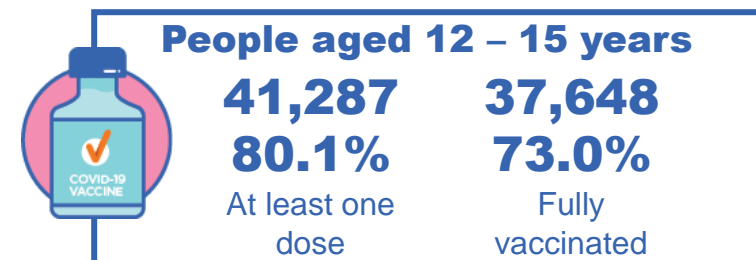
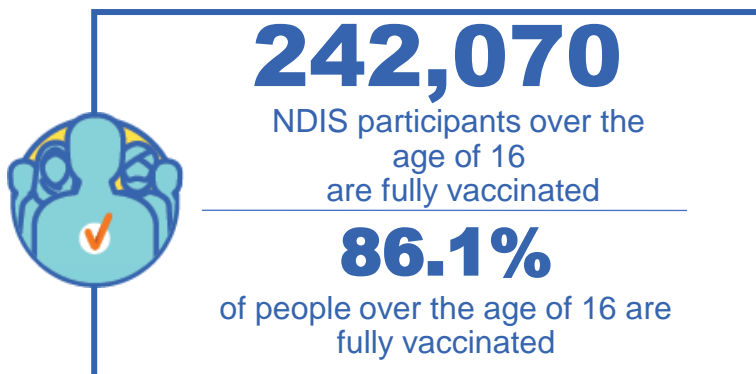
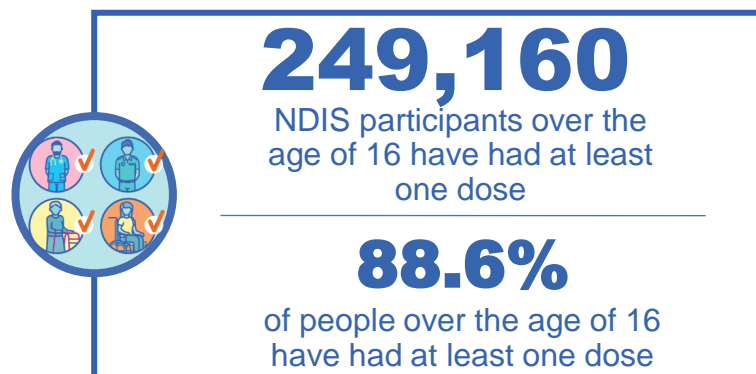
\*Sourced from the Australian Immunisation Register. Includes all persons vaccinated at participating residential aged care, disability and related industry settings.  
\*\*State level breakdown indicates the residential location and may not align to the state in which the vaccination occurred.

Source: Australian Immunisation Register

# National Disability Insurance Scheme (NDIS) reported vaccinations

Data as at:  
10 February 2022  
Updated weekly

Australia's COVID-19  
Vaccine Roadmap



## NDIS participant vaccinations

	People aged 16+ with at least one dose	People aged 16+ fully vaccinated	% People aged 16+ with at least one dose	% People aged 16+ fully vaccinated
ACT	4,773	4,697	<b>90.8%</b>	<b>89.4%</b>
NSW	77,357	75,976	<b>89.1%</b>	<b>87.5%</b>
NT	2,159	2,047	<b>79.8%</b>	<b>75.7%</b>
QLD	48,748	47,209	<b>87.7%</b>	<b>84.9%</b>
SA	19,860	19,373	<b>86.2%</b>	<b>82.6%</b>
TAS	6,222	5,972	<b>88.4%</b>	<b>84.8%</b>
VIC	66,592	65,256	<b>89.8%</b>	<b>88.0%</b>
WA	23,099	20,269	<b>87.9%</b>	<b>82.0%</b>
<b>National</b>	<b>249,160</b>	<b>242,070</b>	<b>88.6%</b>	<b>86.1%</b>

Source: Linkage between National Disability Insurance Agency data and the Australian Immunisation Register. Total NDIS participant numbers as at 17th October. Australian Immunisation Register data as at 09 February. Includes all participants regardless of residence type.

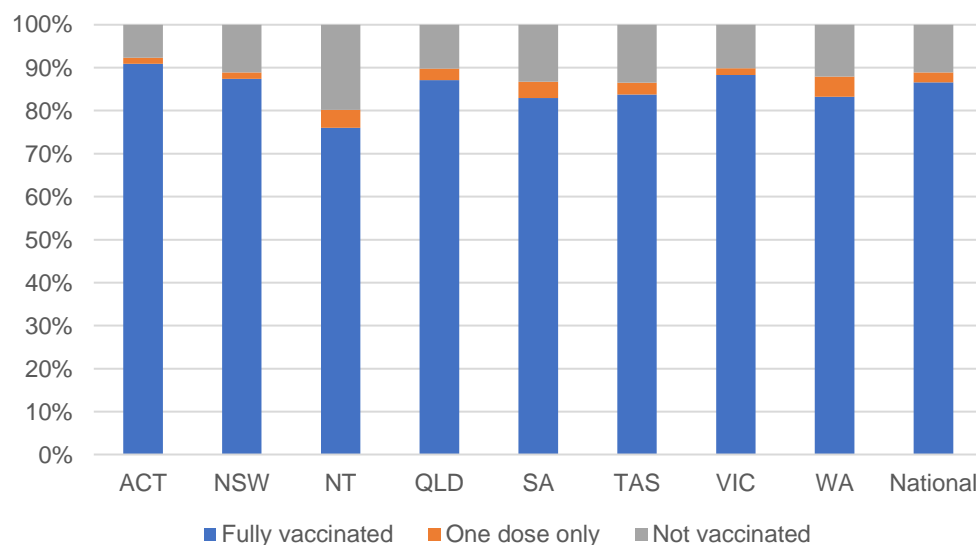
# National Disability Insurance Scheme (NDIS) reported vaccinations

Data as at:  
10 February 2022  
Updated Weekly

Australia's COVID-19  
Vaccine Roadmap

NATIONAL	Total people with at least one dose	People fully vaccinated	Total number of individuals in cohort	% People with at least one dose	% People fully vaccinated
NDIS participants living in disability accommodation	20,319	19,826	22,800	89.1%	87.0%

## NDIS participants in disability and aged care accommodation



Source: Linkage between National Disability Insurance Agency data and the Australian Immunisation Register. Includes participants residing in disability accommodation only.  
Source: Total NDIS participant numbers as at 17th October. Participant data as at 08 February. Australian Immunisation Register data as at 09 February. Worker data as at 09 February.

## NDIS workforce vaccinations

	NDIS workers with at least one dose	NDIS workers fully vaccinated	% NDIS workers with at least one dose	% NDIS workers fully vaccinated
NSW	111,229	110,702	97.6%	97.2%
VIC	105,706	105,231	97.8%	97.3%
QLD	65,650	64,782	96.6%	95.3%
WA	31,968	30,550	98.2%	93.8%
SA	33,871	33,089	97.4%	95.1%
TAS	10,596	10,435	99.5%	98.0%
ACT	3,438	3,431	99.5%	99.3%
NT	3,066	3,023	99.4%	98.0%
<b>TOTAL</b>	<b>365,524</b>	<b>361,243</b>	<b>97.6%</b>	<b>96.5%</b>

Source: the NDIS Commission has established a requirement for registered NDIS providers who provide intensive disability support services to report on the vaccination status of workers they employ, or otherwise engage, to deliver NDIS-funded supports and services, and who are required to be vaccinated in accordance with in-force state and territory public health orders. The statistics reflect data reported to the NDIS Commission by registered NDIS providers and should be considered indicative and subject to change

Note: Some registered NDIS providers are yet to report on the vaccination status of their workforce. The NDIS Commission is working with those providers around reporting requirements.

Remaining workers not included include those exempt from vaccination requirements, workers whose vaccination status is not yet verified by the provider (such as workers on leave) and provider reporting anomalies.

Data as at:  
14 Feb 2022

# Residential aged care vaccination rollout

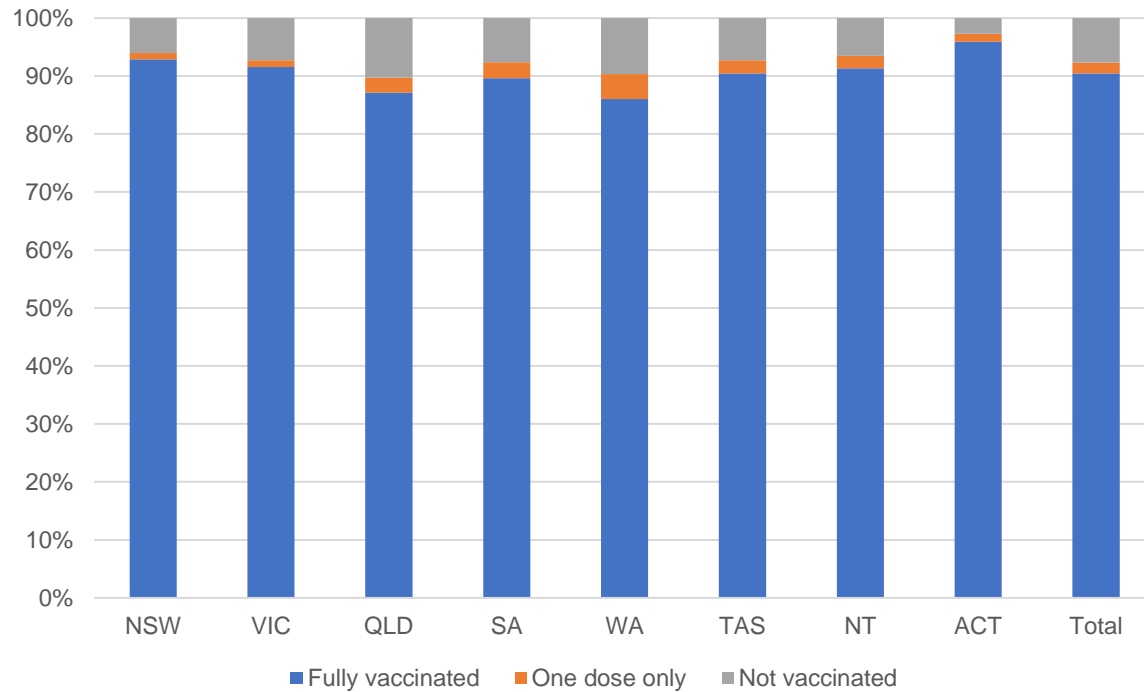
Residential aged care facilities status

**100%**  
Commonwealth facilities visited (2,541 planned sites)

**171,931**  
People fully vaccinated

**175,536**  
People with at least one dose

## Aged care resident vaccinations



## Aged care worker vaccinations

Jurisdictions	Total workers with at least one dose	Workers fully vaccinated	% Workers with at least one dose	% Workers fully vaccinated
NSW	78,672	78,635	99.1%	99.1%
VIC	69,274	69,272	98.5%	98.5%
QLD	48,913	48,908	99.2%	99.2%
SA	27,086	27,055	98.7%	98.6%
WA	23,971	23,968	99.6%	99.6%
TAS	7,652	7,652	100.0%	100.0%
NT	880	880	100.0%	100.0%
ACT	3,023	3,023	100.0%	100.0%
<b>Total</b>	<b>259,471</b>	<b>259,393</b>	<b>99.0%</b>	<b>99.0%</b>

Source: My Aged Care Portal vaccination progress

\*Status updates are provided by facilities at least once per week. Reporting is updated Monday to Friday to encompass different facility updates being made on different days.

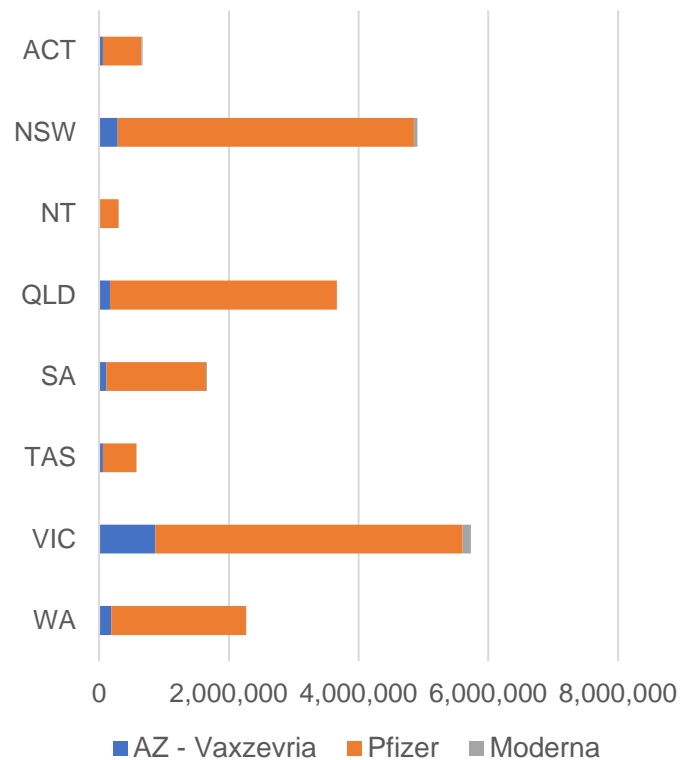
Data is sourced directly from Aged Care Service Providers and is not drawn or closely aligned with data from AIR due to inconsistencies and potential lags in uploading of records.



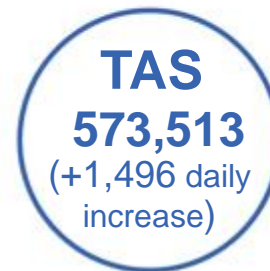
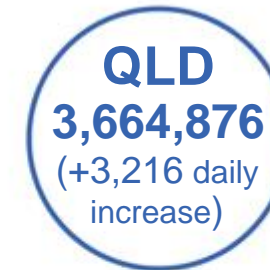
Data as at:  
14 Feb 2022

## Jurisdiction administered

Total vaccine doses administered in State and Territory clinics as at 14 February



**19,772,504** total vaccine doses administered in State and Territory clinics as at 14 February  
 + **35,223** recorded in the last 24 hours  
 + **289,241** recorded in the last 7 days



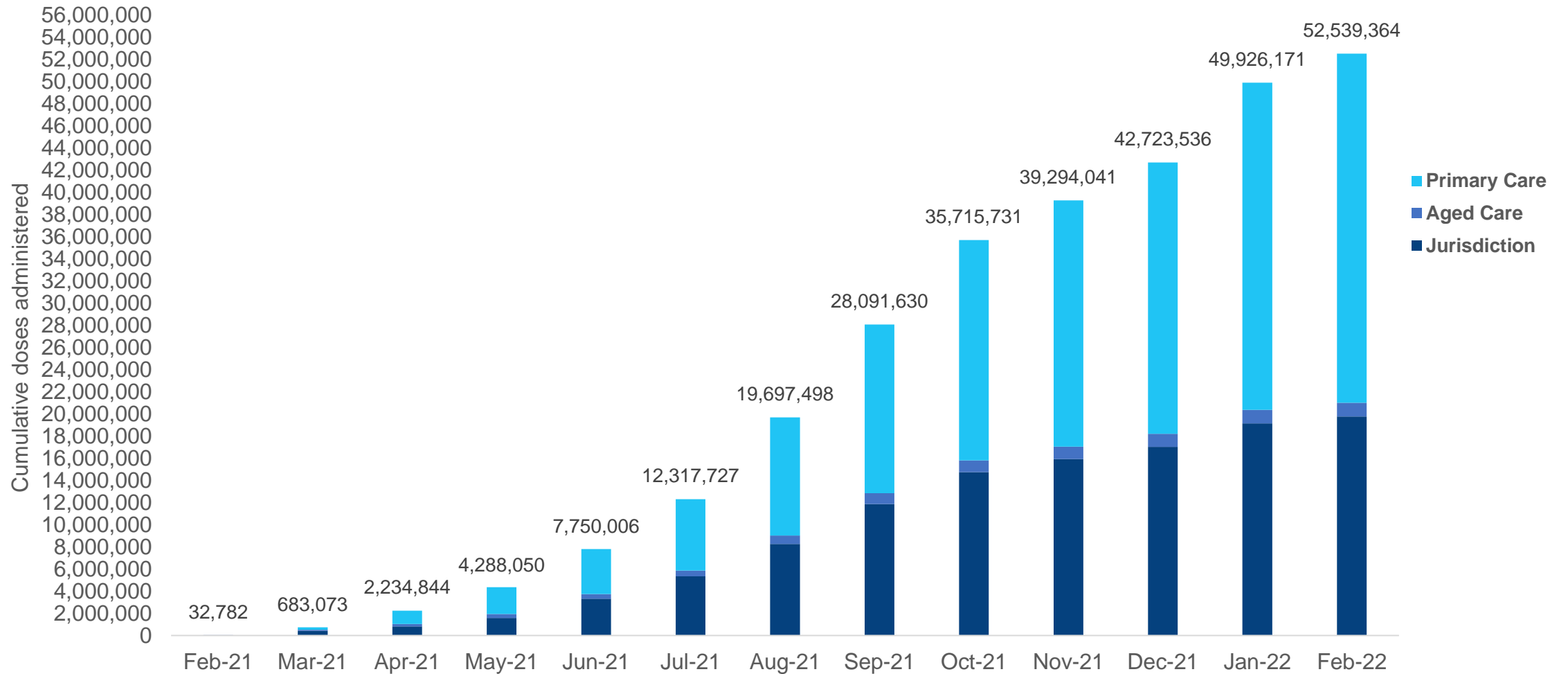
\*Sourced from the Australian Immunisation Register. Numbers are calculated as difference in daily cumulative reported numbers to allow for historical corrections.

Source: Australian Immunisation Register



# Cumulative doses administered by channel

Data as at:  
14 Feb 2022



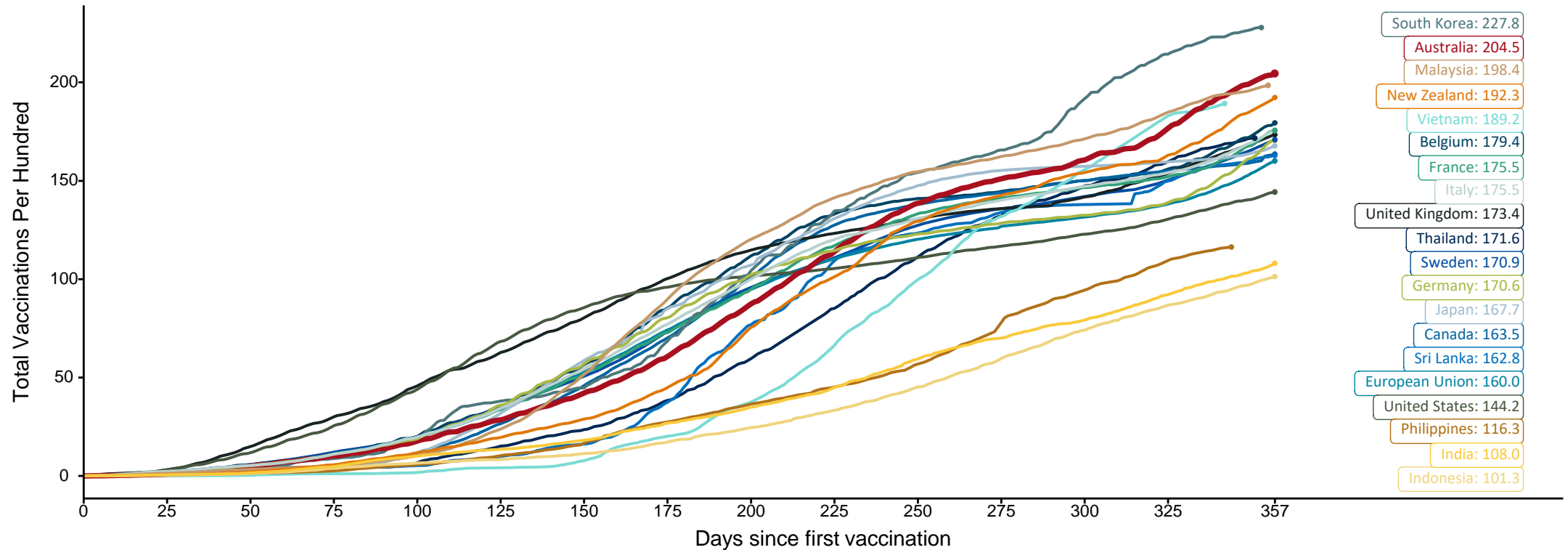
Source: Australian Immunisation Register

# Doses at equivalent stages of rollout (Day 357)

Data as at:  
14 Feb 2022

The x-axis is truncated at the length of Australia's vaccination program. Countries with intermittent reporting have had their doses per 100 imputed to Australia's current stage of rollout. Israel excluded as it is beyond scale of the graph

Cumulative doses administered (14 Feb): **52,539,364**

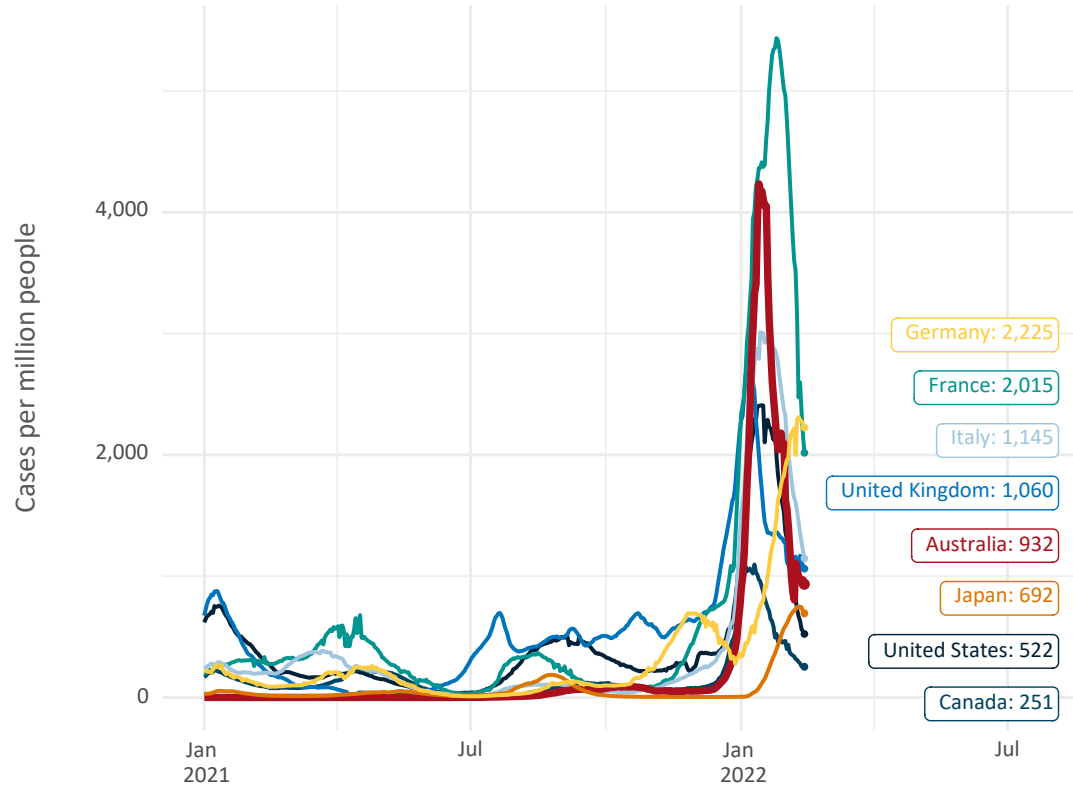


Note: From 15 September 2021, data for Australia includes all doses administered to people 12 and over. Prior to 15 September, data was for 16 and over  
 Due to data revisions, Singapore has been removed from the chart  
 Source: Department of Health (Australia), Our World in Data (international)  
 Latest data: 14 February

Data as at:  
14 Feb 2022

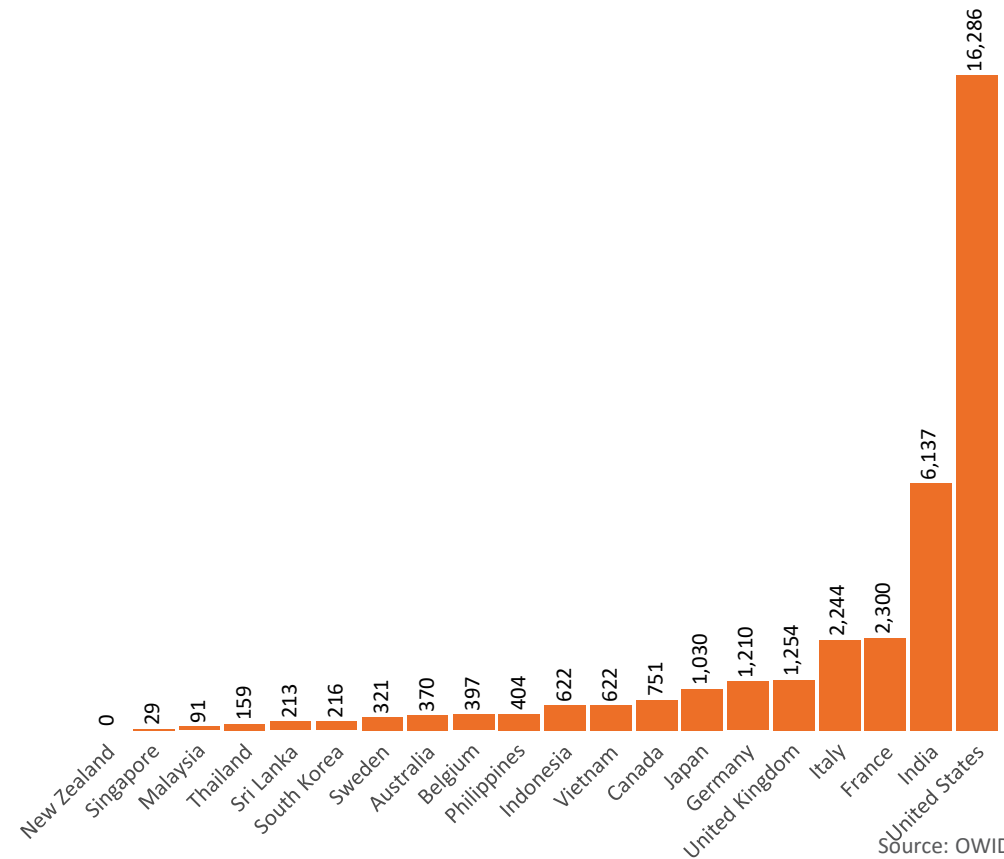
# International data – COVID-19

New daily cases per million in 2021, Australia and G7 countries  
Smoothed - 7 day average



Source: OWID  
Data downloaded: 15 Feb 2022 08:12  
Latest data: 13 Feb 2022

COVID-19 deaths in past 7 days - Australia and select countries

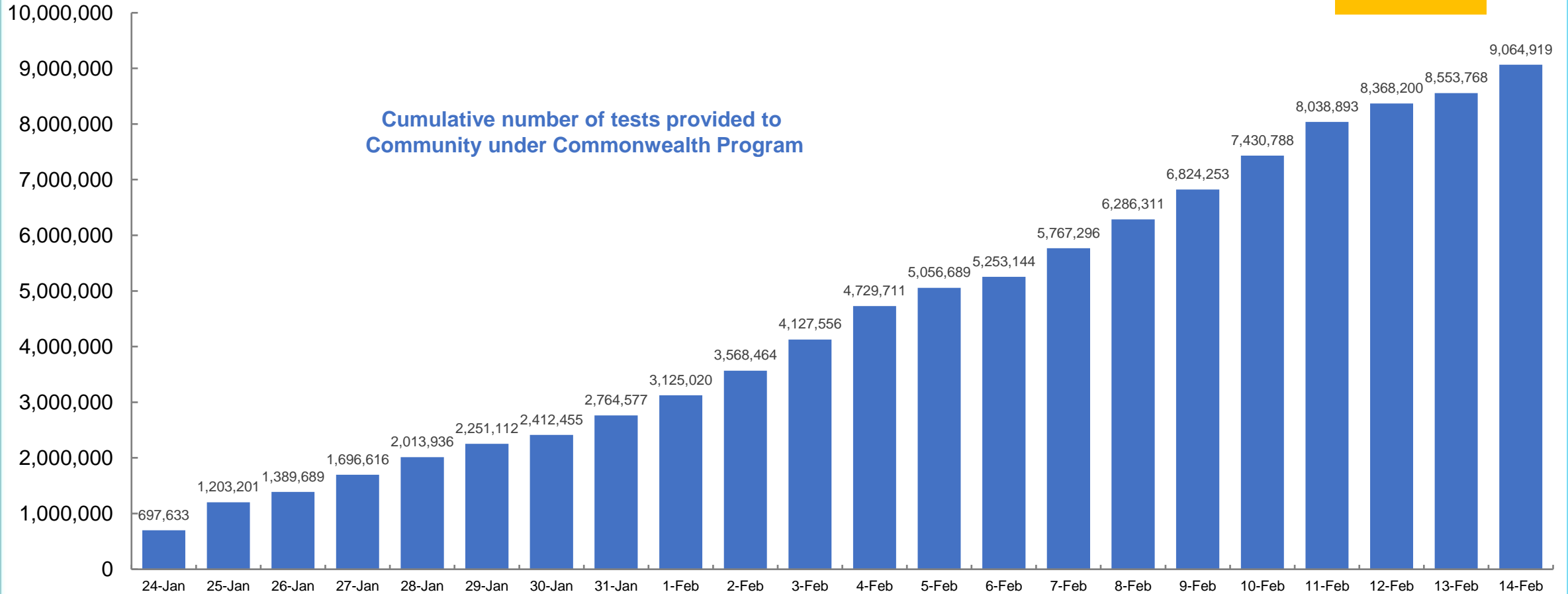


Source: OWID  
Data downloaded: 15 Feb 2022 08:12  
Latest data: 13 Feb 2022

Data as at:  
14 Feb 2022


# Concessional rapid antigen test program

5,261 pharmacies have delivered over 9 million rapid antigen tests to more than 1.7 Million eligible concession card holders (to 10 Feb) under the Government's concessional rapid antigen test program.



Data as at midnight:  
13 Feb 2022  
Updated weekly

# Pandemic Response Payments



**2.38 million**  
People have received at least one COVID Disaster Payment (including ISP200)

---

**\$13.59 billion**  
Paid Out as at 13 Feb 2022

---


**6.81 million**  
Claims granted across three different payments



**92%**  
of Claims Received Digitally



<b>COVID Disaster Payment:</b>	5.89 million claims received - 2.19 million individuals paid a total of \$12.59 billion.
<b>\$200 Income Support Payment:</b>	353,000 claims received - 183,000 individuals paid a total of \$268.9 million.
<b>Pandemic Leave Disaster Payment:</b>	974,000 claims received - 674,000 individuals paid a total of \$729.6 million.



**THREE PAYMENTS AVAILABLE**

**COVID Disaster Payment**  
assisting during a lockdown event in a Commonwealth hotspot.

**Income Support Payment \$200**  
for income support recipients who lost at least 8 hours of work.

**Pandemic Leave Disaster Payment**  
for those who have to self-isolate, quarantine or care.

For more information visit:  
[servicesaustralia.gov.au](https://servicesaustralia.gov.au)

## COVID-19 DISASTER PAYMENTS

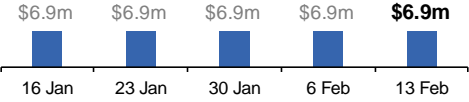
**Northern Territory**  
Lockdown (#3) from 16 Nov to 22 Nov  
Claiming period ended 27 Dec

**7,500 people have received at least one COVID Disaster Payment.**

**\$6.9m paid out as at 13 Feb 2022.**

**\$0 paid in initial payments in the week ending 13 Feb 2022.**

Cumulative payments made by Territory since activation on 25 Aug 2021.



Date	Cumulative Payments
16 Jan	\$6.9m
23 Jan	\$6.9m
30 Jan	\$6.9m
6 Feb	\$6.9m
13 Feb	\$6.9m

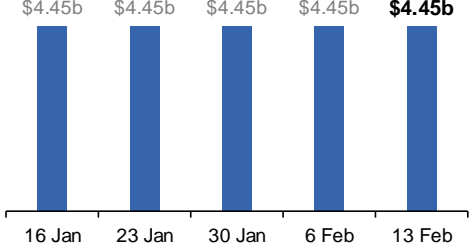
**Victoria**  
Lockdown (#6) from 6 Aug to 28 Oct  
Claiming period ended 9 Dec

**745,000 people have received at least one COVID Disaster Payment.**

**\$4.45b paid out as at 13 Feb 2022.**

**\$10,000 paid in initial and reoccurring payments in the week ending 13 Feb 2022.**

Cumulative payments made by State since activation on 8 Jun 2021.



Date	Cumulative Payments
16 Jan	\$4.45b
23 Jan	\$4.45b
30 Jan	\$4.45b
6 Feb	\$4.45b
13 Feb	\$4.45b

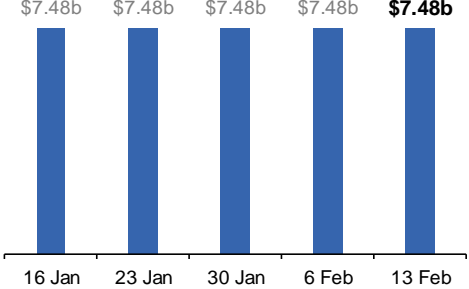
**New South Wales**  
Lockdown from 24 Jun to 10 Oct  
Claiming period ended 27 Nov

**1.08m people have received at least one COVID Disaster Payment.**

**\$7.48b paid out as at 13 Feb 2022.**

**\$23,000 paid in initial and reoccurring payments in the week ending 13 Feb 2022.**

Cumulative payments made by State since activation on 1 Jul 2021.



Date	Cumulative Payments
16 Jan	\$7.48b
23 Jan	\$7.48b
30 Jan	\$7.48b
6 Feb	\$7.48b
13 Feb	\$7.48b

**Australian Capital Territory**  
Lockdown from 12 Aug to 14 Oct  
Claiming period ended 25 Nov

**65,000 people have received at least one COVID Disaster Payment.**

**\$344.7m paid out as at 13 Feb 2022.**

**\$3,000 paid in initial and reoccurring payments in the week ending 13 Feb 2022.**

Cumulative payments made by Territory since activation on 20 Aug 2021.



Date	Cumulative Payments
16 Jan	\$344.7m
23 Jan	\$344.7m
30 Jan	\$344.7m
6 Feb	\$344.7m
13 Feb	\$344.7m

Data as at midnight:  
13 Feb 2022  
Updated weekly

# Pandemic Response Payments (continued)

## COVID-19 DISASTER PAYMENTS

### Tasmania

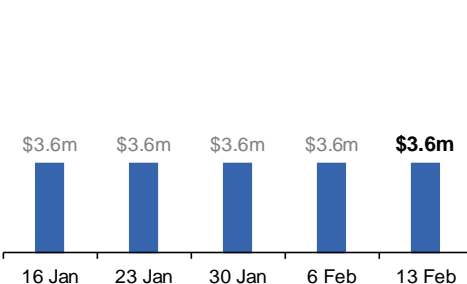
Lockdown from 15 Oct to 18 Oct  
Claiming period ended 12 Nov

**6,900 people have received at least one COVID Disaster Payment.**

**\$3.6m paid out as at 13 Feb 2022.**

**\$0 paid in initial and reoccurring payments in the week ending 13 Feb 2022.**

Cumulative payments made by State since activation on 22 Oct 2021.



### Queensland

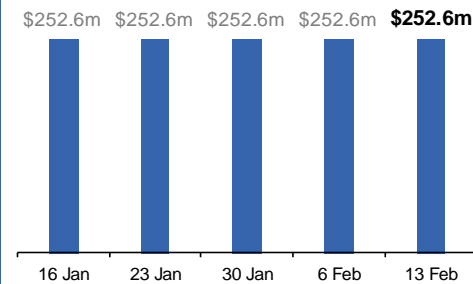
Lockdown from 31 Jul to 11 Aug  
Claiming period ended 28 Aug

**196,000 people have received at least one COVID Disaster Payment.**

**\$252.6m paid out as at 13 Feb 2022.**

**\$0 paid in initial and reoccurring payments in the week ending 13 Feb 2022.**

Cumulative payments made by State since activation on 7 Aug 2021.



### South Australia

Lockdown from 21 to 27 Jul  
Claiming period ended 17 Aug

**86,000 people have received at least one COVID Disaster Payment.**

**\$48.2m paid out as at 13 Feb 2022.**

**\$0 paid in initial and reoccurring payments in the week ending 13 Feb 2022.**

Cumulative payments made by State since activation on 28 Jul 2021.

