



**Australian Government**  
**Operation COVID Shield**

# COVID-19 Vaccine Roll-out

13 February 2022

Data as at:  
12 Feb 2022

## Total vaccine doses



**52,321,535** total vaccine doses administered nationally as at 12 February  
**+109,070** recorded in the last 24 hours



**19,775,801**

people have had at least one dose

**>95%**

of people over the age of 16 have had at least one dose



**19,381,353**

people are fully vaccinated

**94.0%**

of people over the age of 16 are fully vaccinated



**9,991,919**

people over the age of 16 who have received more than two doses

**NSW**  
**16,466,130**  
(+24,095 daily increase)

**VIC**  
**13,829,079**  
(+35,523 daily increase)

**QLD**  
**10,014,812**  
(+14,948 daily increase)

**WA**  
**5,451,250**  
(+20,271 daily increase)

**TAS**  
**1,157,078**  
(+2,228 daily increase)

**SA**  
**3,589,175**  
(+7,921 daily increase)

**ACT**  
**1,308,021**  
(+3,249 daily increase)

**NT**  
**505,990**  
(+835 daily increase)

\*Administration state breakdown indicates state in which a vaccine was administered

\*\*Overall dose count includes instances of more than two doses per person in a small number of cases.

Source: Australian Immunisation Register

# Booster Vaccinations

Data as at:  
12 Feb 2022



**9,991,919** total people over the age of 16 years old  
who have received more than two doses nationally

**+90,208** people who have received more than two doses  
nationally in the last 24 hours

**NSW**  
**3,173,150**  
(20,703 daily  
increase)

**VIC**  
**2,707,193**  
(31,138 daily  
increase)

**QLD**  
**1,771,685**  
(11,926 daily  
increase)

**WA**  
**1,056,011**  
(14,539 daily  
increase)

**TAS**  
**216,046**  
(1,965 daily  
increase)

**SA**  
**709,929**  
(6,128 daily  
increase)

**ACT**  
**212,204**  
(2,213 daily  
increase)

**NT**  
**78,683**  
(643 daily  
increase)

**67,018** doses administered to persons  
residing in other territories or with  
missing residential information

Source: Australian Immunisation Register

Data as at:  
12 Feb 2022

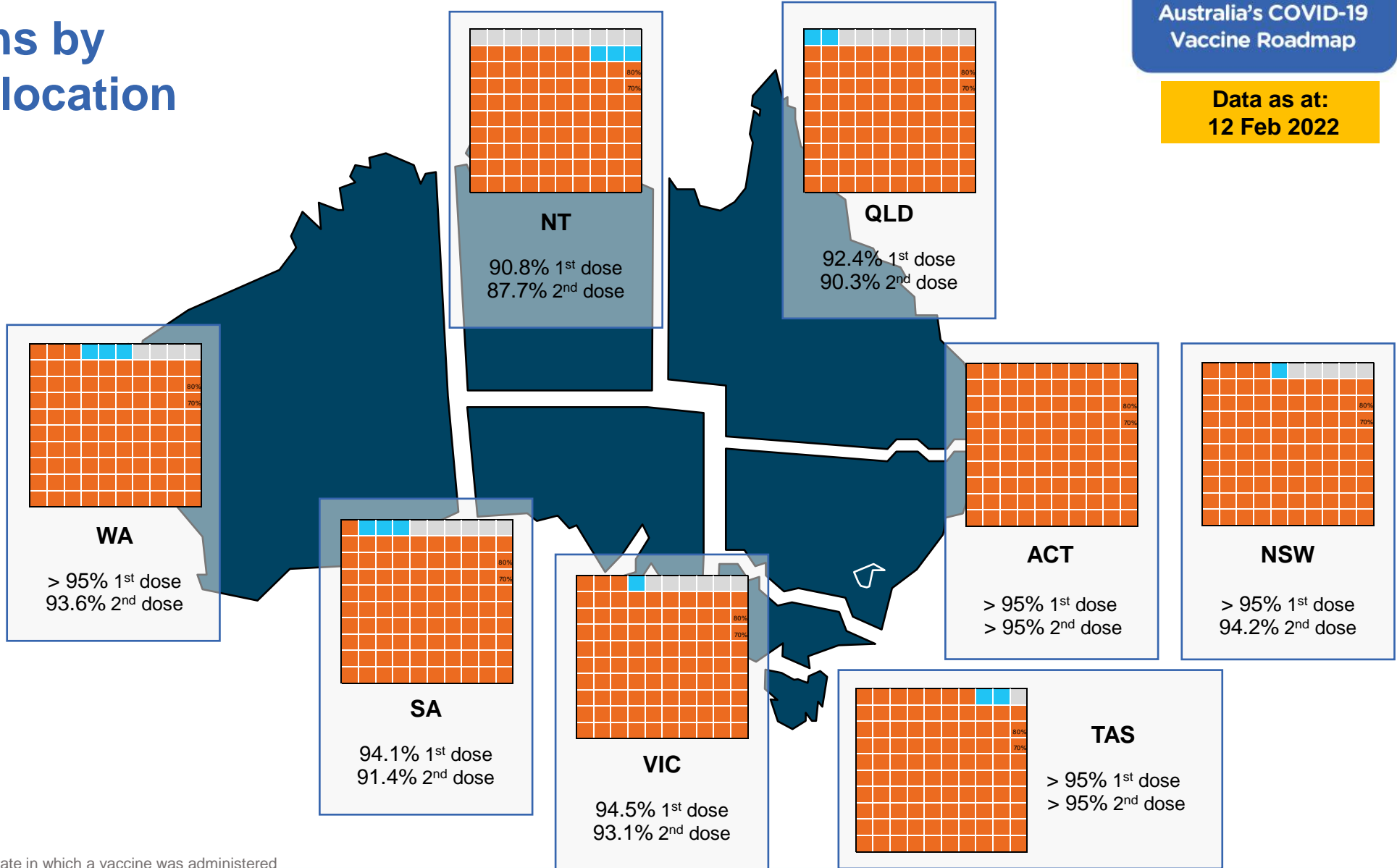
# Vaccinations by residential location

## First doses

Age	Today	4 weeks ago	8 weeks ago
16+	>95%	>95%	94.2%
50+	>95%	>95%	>95%
70+	>95%	>95%	>95%

## Fully vaccinated

Age	Today	4 weeks ago	8 weeks ago
16+	94.0%	92.8%	90.9%
50+	>95%	>95%	>95%
70+	>95%	>95%	>95%



\*Residential state may differ from the state in which a vaccine was administered

# Commonwealth and Jurisdiction vaccine doses administered

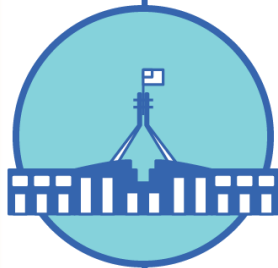
Data as at:  
12 Feb 2022



**52,321,535** total vaccine doses administered nationally as at 12 February  
+ **109,070** recorded in the last 24 hours



**19,714,332** doses administered by state and territory facilities  
+ **44,054** recorded in the last 24 hours



**32,607,203** doses administered by commonwealth facilities  
+ **65,016** recorded in the last 24 hours

**31,362,636** total vaccine doses administered in primary care settings  
**1,244,567** total vaccine doses administered in aged care and disability settings

NSW	Jurisdictions	Commonwealth
Cumulative	4,902,803	11,563,327
Daily increase	5,998	18,097

VIC	Jurisdictions	Commonwealth
Cumulative	5,710,457	8,118,622
Daily increase	15,948	19,575

QLD	Jurisdictions	Commonwealth
Cumulative	3,659,082	6,355,730
Daily increase	5,429	9,519

WA	Jurisdictions	Commonwealth
Cumulative	2,251,226	3,200,024
Daily increase	8,715	11,556

TAS	Jurisdictions	Commonwealth
Cumulative	572,016	585,062
Daily increase	702	1,526

SA	Jurisdictions	Commonwealth
Cumulative	1,657,496	1,931,679
Daily increase	4,465	3,456

ACT	Jurisdictions	Commonwealth
Cumulative	665,007	643,014
Daily increase	2,041	1,208

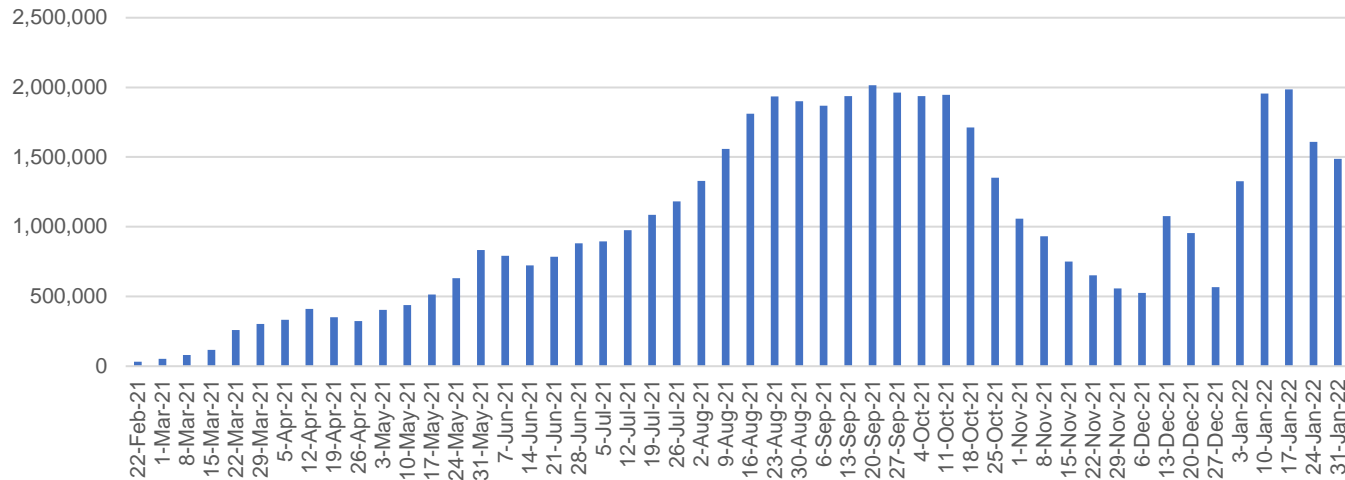
NT	Jurisdictions	Commonwealth
Cumulative	296,245	209,745
Daily increase	756	79

# Vaccine milestone charts

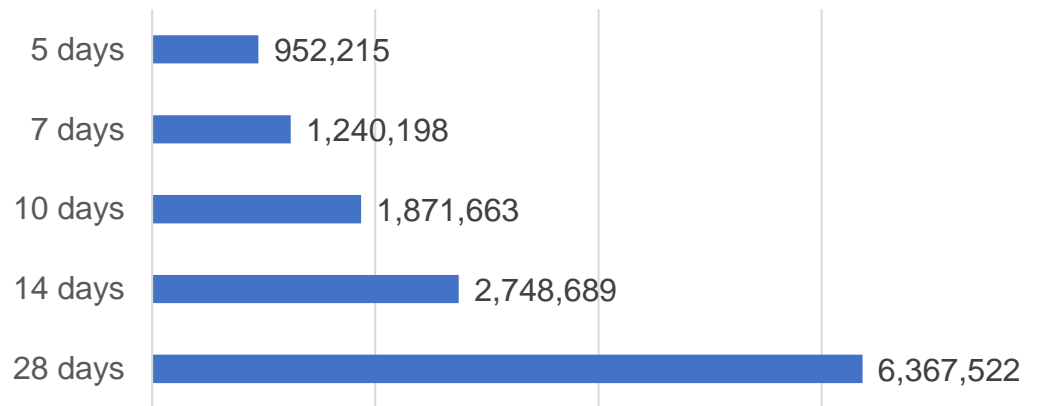
Data as at:  
12 Feb 2022

Australia's COVID-19  
Vaccine Roadmap

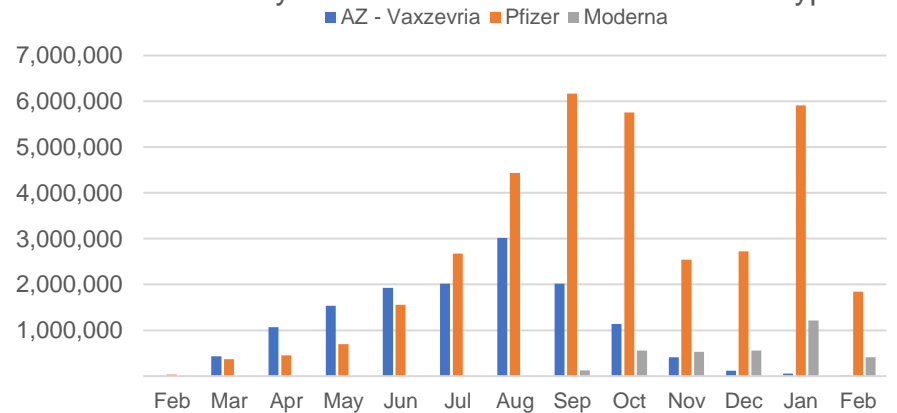
Doses Administered by Week



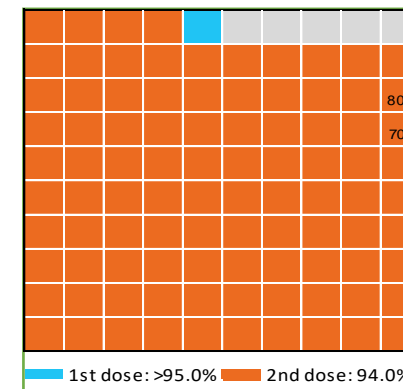
Doses Reported



Doses by administration month and vaccine type



Eligible population percentage coverage



\*Sourced from the Australian Immunisation Register.

\*Each square represents 1% of the national population. Squares are filled as milestones are achieved.

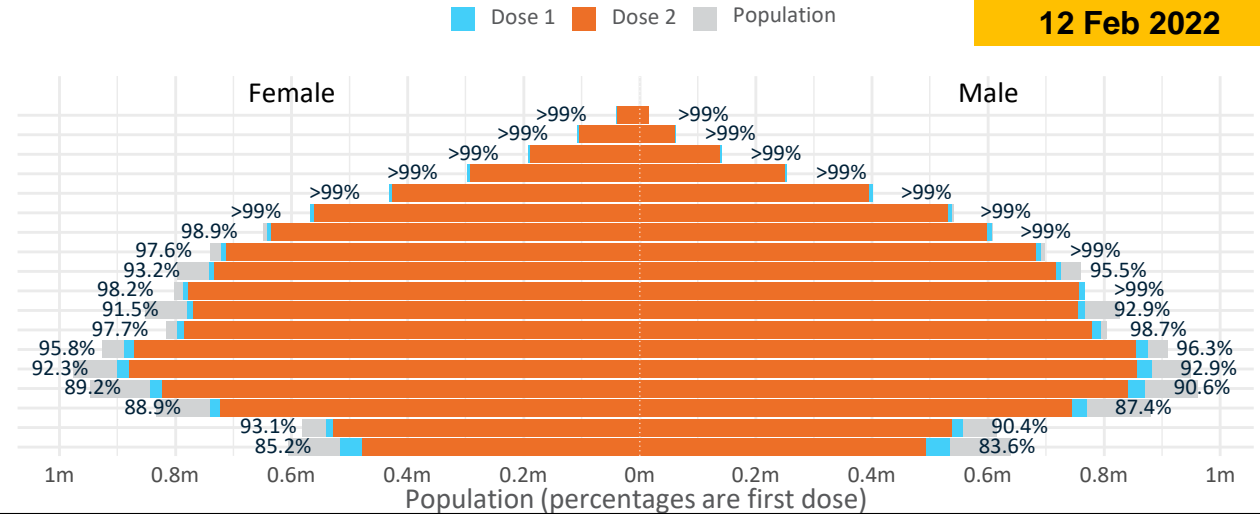
# Doses by age and sex

First and second doses by age and sex

Data as at:  
12 Feb 2022

	16+	50+	12-15	5-11
Dose 1	95.91% (19,775,801 doses / 20,619,959 people)	>99% (8,741,092 doses / 8,749,703 people)	84.38% (1,049,715 doses / 1,243,990 people)	47.50% (1,081,430 doses / 2,276,638 people)
Dose 2	93.99% (19,381,353 doses / 20,619,959 people)	98.47% (8,616,219 doses / 8,749,703 people)	77.98% (970,052 doses / 1,243,990 people)	0.38% (8,722 doses / 2,276,638 people)

Age	Dose 1	Dose 2
95+	57,541 (>99%)	53,928 (>99%)
90-94	170,453 (>99%)	163,994 (>99%)
85-89	334,511 (>99%)	326,057 (>99%)
80-84	551,850 (>99%)	542,709 (>99%)
75-79	832,511 (>99%)	822,244 (>99%)
70-74	1,105,395 (>99%)	1,092,513 (98.9%)
65-69	1,249,820 (>99%)	1,233,921 (98.1%)
60-64	1,414,376 (98.4%)	1,395,981 (97.2%)
55-59	1,468,960 (94.4%)	1,449,905 (93.2%)
50-54	1,555,675 (>99%)	1,534,967 (98.1%)
45-49	1,547,356 (92.3%)	1,523,917 (90.9%)
40-44	1,593,754 (98.4%)	1,564,432 (96.6%)
35-39	1,766,956 (96.3%)	1,728,565 (94.2%)
30-34	1,789,569 (93.0%)	1,741,260 (90.5%)
25-29	1,724,093 (90.4%)	1,671,003 (87.6%)
20-24	1,515,557 (88.5%)	1,470,888 (85.9%)
16-19	1,097,424 (91.8%)	1,065,069 (89.1%)
12-15	1,049,715 (84.4%)	970,052 (78.0%)



	AUS	ACT	NSW	NT	QLD	SA	TAS	VIC	WA
16 and over - dose 1	19,775,801	349,784	6,275,988	173,097	3,798,311	1,354,958	439,290	5,108,948	2,046,549
16 and over - dose 2	19,381,353	344,724	6,183,507	167,220	3,714,038	1,316,731	427,528	5,037,151	1,979,910
16 and over - population	20,619,959*	344,037	6,565,651	190,571	4,112,707	1,440,400	440,172	5,407,574	2,114,978
16 and over % with dose 1	95.91%	>99%	95.59%	90.83%	92.36%	94.07%	>99%	94.48%	96.76%
16 and over % with dose 2	93.99%	>99%	94.18%	87.75%	90.31%	91.41%	97.13%	93.15%	93.61%
5 to 11 - dose 1	1,081,430	29,992	325,796	11,840	196,839	77,597	27,042	300,781	104,969
5 to 11 - dose 2	8,722	148	3,616	76	1,519	244	2,732	2,732	298
5 to 11 - population	2,276,638	39,789	716,460	24,750	478,731	148,816	45,033	578,499	244,154
5 to 11 % with dose 1	47.50%	75.38%	45.47%	47.84%	41.12%	52.14%	60.05%	51.99%	42.99%
5 to 11 % with dose 2	0.38%	0.37%	0.50%	0.31%	0.32%	0.16%	0.09%	0.47%	0.12%
12 to 15 - dose 1	1,049,715	20,060	326,124	10,847	207,231	67,869	22,745	275,838	109,617
12 to 15 - dose 2	970,052	19,199	307,943	9,527	188,330	62,036	20,706	261,294	93,079
12 to 15 - population	1,243,990	19,693	390,330	13,060	270,146	82,747	26,308	308,611	132,869
12 to 15 % with dose 1	84.38%	>99%	83.55%	83.06%	76.71%	82.02%	86.46%	89.38%	82.50%
12 to 15 % with dose 2	77.98%	97.49%	78.89%	72.95%	69.71%	74.97%	78.71%	84.67%	70.05%

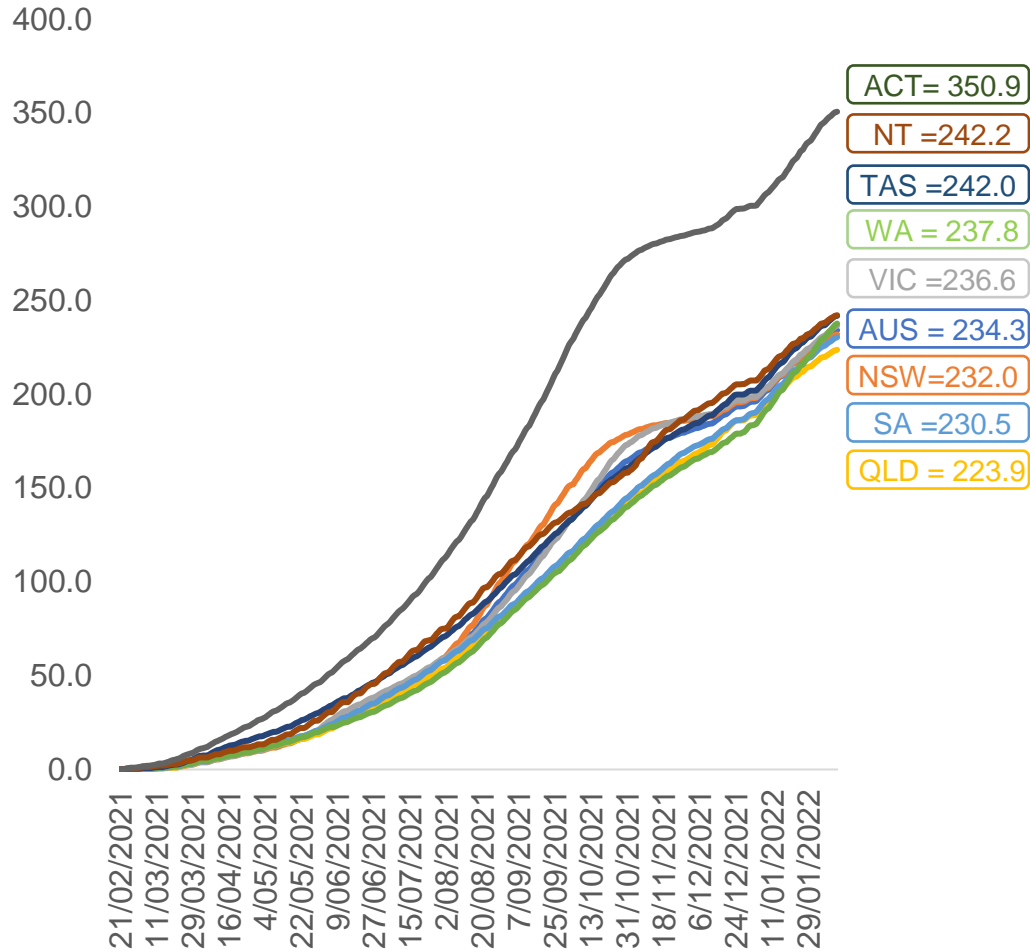
\*National population will not equal sum of listed jurisdictions due to a small number of people counted in national population residing in some 'other' territories. Sum of state doses will not add to national total as some records are unable to be geocoded to a State or Territory.  
Doses sourced from Australian Immunisation Register, population from ABS ERP June 2020

# Vaccinations by location

Data as at:  
12 Feb 2022

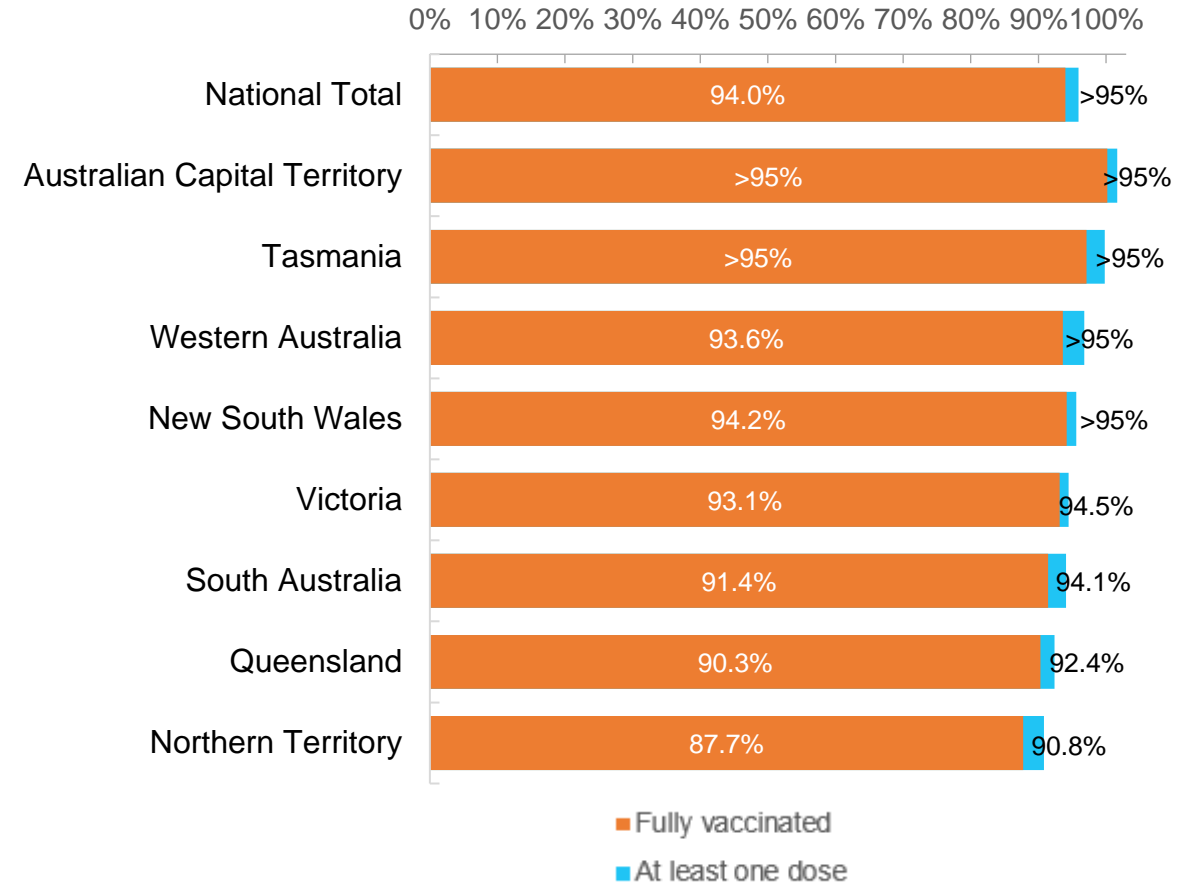
Australia's COVID-19  
Vaccine Roadmap

Cumulative total doses administered vs eligible state populations\*



\*Not an indication of percentage vaccinated, numbers will exceed 100 due to multiple doses required per person of the population. All doses are included for those aged 12 and above, and are based on vaccination provider location.

First and Second Doses by residential location





# Aboriginal and Torres Strait Islander peoples

## Number of people vaccinated

Data as at:  
08 Feb 2022  
Updated weekly

Australia's COVID-19  
Vaccine Roadmap



**428,426**

people over the age of 16  
have had at least one dose

**82.3%**

of people over the age of 16  
have had at least one dose



**398,952**

people over the age of 16  
are fully vaccinated

**76.6%**

of people over the age of 16 are  
fully vaccinated



**46,782  
(65.9%)**

people aged 12-15 years  
have had at least one dose

### 175 Aboriginal community controlled health services (ACCHS)

0#	50	27	43	12	3	21	19
<b>ACT</b>	<b>NSW</b>	<b>NT</b>	<b>QLD</b>	<b>SA</b>	<b>TAS</b>	<b>VIC</b>	<b>WA</b>

Medicare Address State <sup>##</sup>	Individuals Dose 1	Individuals Dose 1 %	Individuals Dose 2	Individuals Dose 2 %
Australian Capital Territory	4,870	91.1%	4,736	88.6%
New South Wales	135,151	86.4%	131,547	84.1%
Northern Territory	41,456	87.8%	38,065	80.6%
Queensland	112,908	79.6%	104,458	73.6%
South Australia	19,428	77.7%	17,458	69.8%
Tasmania	14,252	87.6%	13,572	83.4%
Victoria	35,192	89.1%	34,228	86.6%
Western Australia	49,049	77.8%	41,228	65.4%
Unknown/Other Territories	16,120	62.2%	13,660	52.7%
<b>Totals</b>	<b>428,426</b>	<b>82.3%</b>	<b>398,952</b>	<b>76.6%</b>

Source: Australian Immunisation Register

\*Identifying as Aboriginal and Torres Strait Islander is optional and the estimated population may be under reported.

\*\*Includes all Aboriginal and Torres Strait Islander peoples who have received a vaccination, not limited to those administered in an ACCHS setting

#ACCHS in the ACT are currently operating as a Commonwealth Vaccine Clinics so not included to avoid double counting

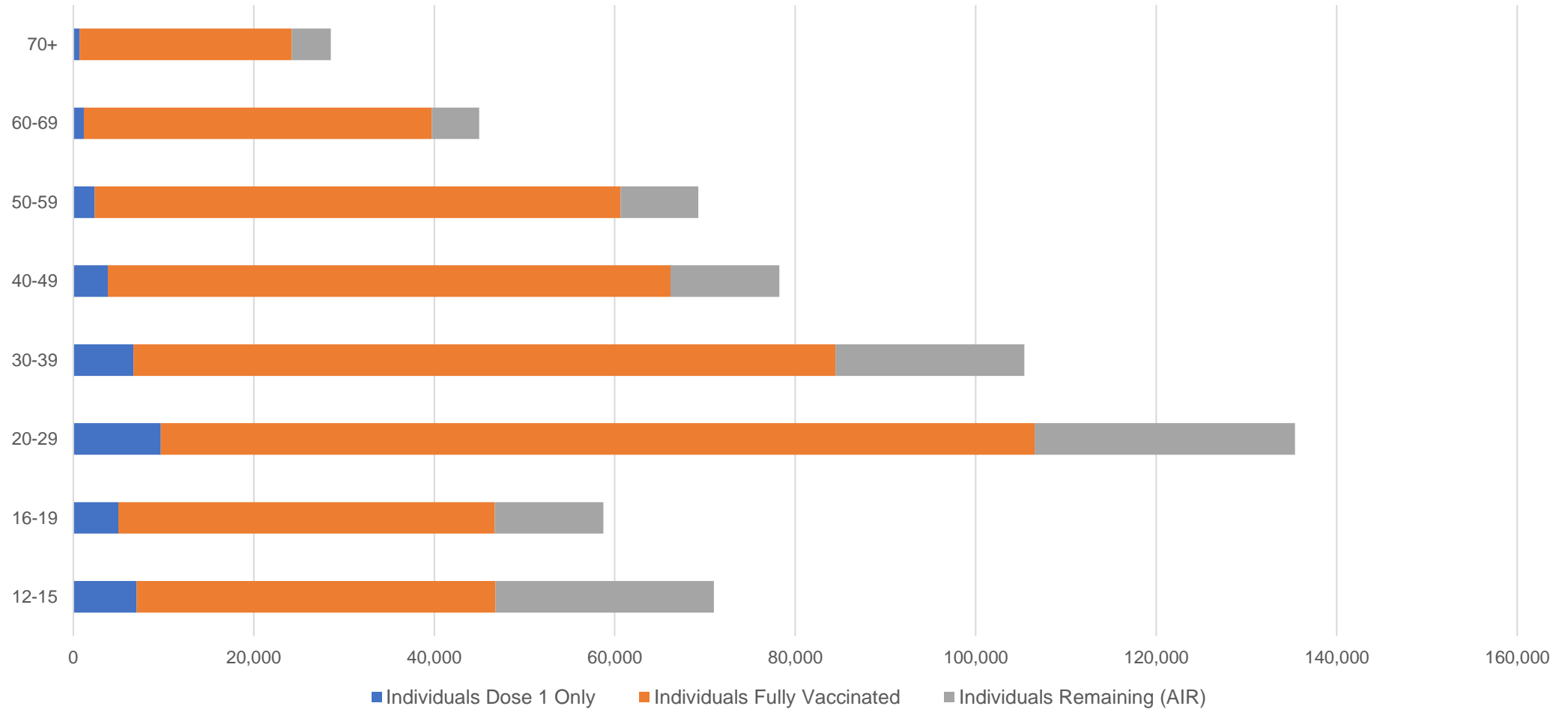
##The above table includes all identified Aboriginal and Torres Strait Islander people who are aged 16 and above by their state of residence.

# Aboriginal and Torres Strait Islander peoples

## Number of people vaccinated by age

Data as at:  
08 Feb 2022  
Updated weekly

Australia's COVID-19  
Vaccine Roadmap



Source: Australian Immunisation Register

# Commonwealth primary care

Data as at:  
12 Feb 2022

Australia's COVID-19  
Vaccine Roadmap



## Primary care vaccine administration sites

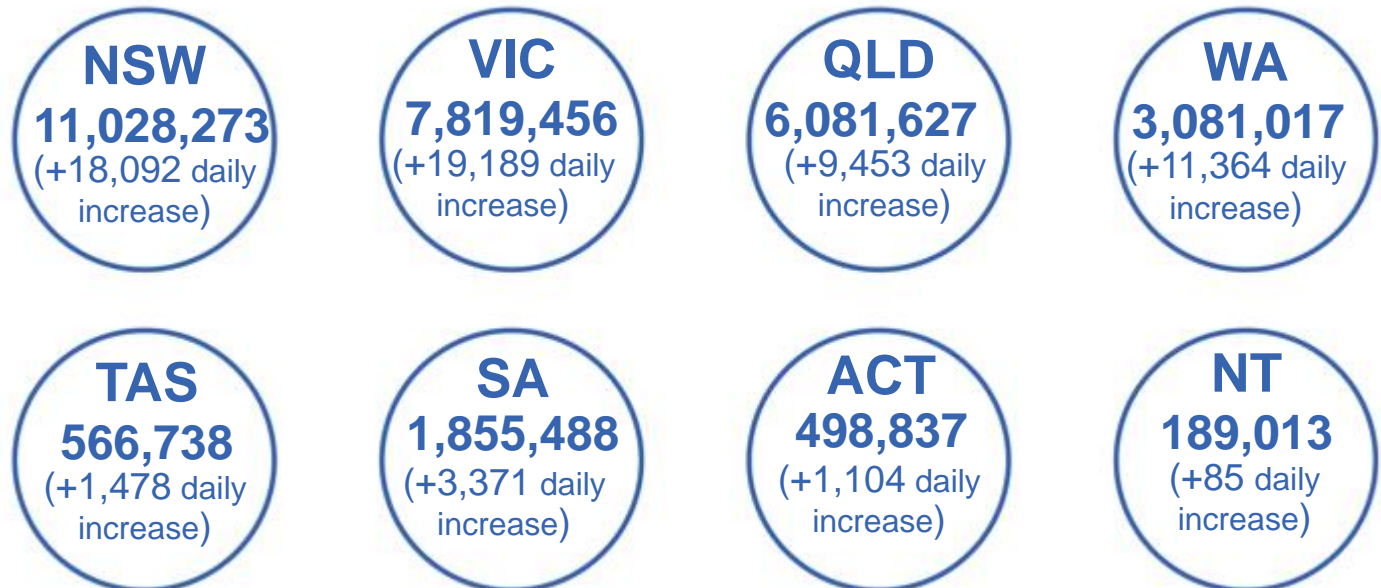
<b>5,745</b>	<b>128</b>	<b>174</b>	<b>3,537</b>
GPs	CVCs	ACCHS	Pharmacies



**31,362,636** total vaccine doses administered  
primary care settings as at 12 February  
**+ 64,344** recorded in the last 24 hours

## Primary care vaccinations by provider type

	Doses administered	Daily increase	7 day increase
<b>General Practice*</b> includes other Commonwealth	25,860,834	42,319	621,775
<b>Pharmacy</b>	5,501,802	22,025	303,858



**242,187**

doses administered to persons  
residing in other territories or with  
missing residential information

\*General practice includes Commonwealth Vaccination Clinics, Aboriginal Community Health Centres, Royal Flying Doctor Service and other Commonwealth vaccination facilities

Source: Australian Immunisation Register

# Commonwealth aged care and disability doses administered

Data as at:  
12 Feb 2022



**1,244,567** (+ 672 last 24 hours)

Total vaccine doses administered in aged care and disability facilities as at 12 February

Number of doses administered as part of the Commonwealth aged and disability care rollout

**NSW**  
**553,426**  
(+78 daily increase)

**VIC**  
**237,394**  
(+287 daily increase)

**QLD**  
**196,403**  
(+116 daily increase)

**WA**  
**97,721**  
(+88 daily increase)

**TAS**  
**22,036**  
(+19 daily increase)

**SA**  
**83,223**  
(+61 daily increase)

**ACT**  
**16,182**  
(+29 daily increase)

**NT**  
**7,015**  
(+0 daily increase)

**31,167**

doses administered to persons residing in other territories or with missing residential information

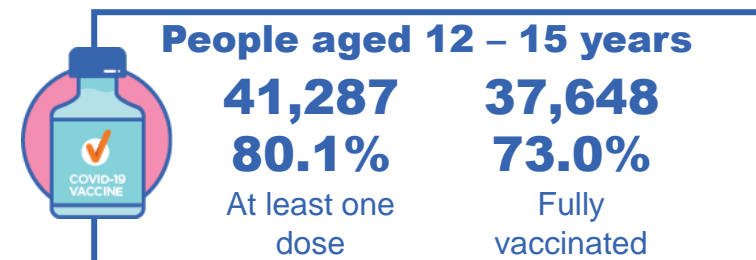
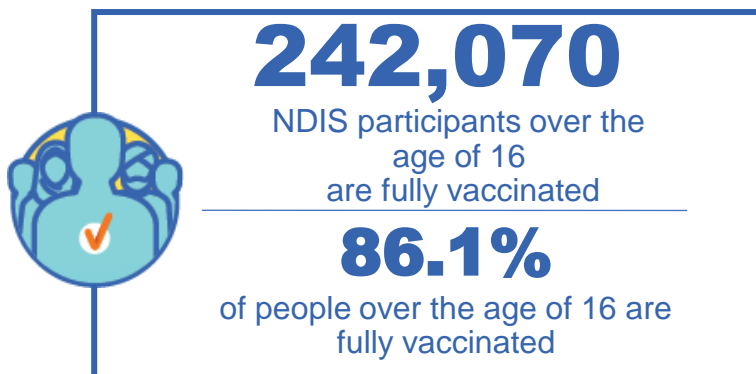
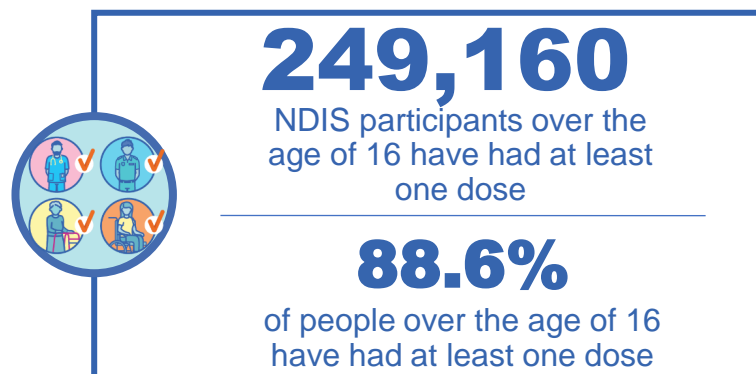
\*Sourced from the Australian Immunisation Register. Includes all persons vaccinated at participating residential aged care, disability and related industry settings.  
\*\*State level breakdown indicates the residential location and may not align to the state in which the vaccination occurred.

Source: Australian Immunisation Register

# National Disability Insurance Scheme (NDIS) reported vaccinations

Data as at:  
10 February 2022  
Updated weekly

Australia's COVID-19  
Vaccine Roadmap



## NDIS participant vaccinations

	People aged 16+ with at least one dose	People aged 16+ fully vaccinated	% People aged 16+ with at least one dose	% People aged 16+ fully vaccinated
ACT	4,773	4,697	<b>90.8%</b>	<b>89.4%</b>
NSW	77,357	75,976	<b>89.1%</b>	<b>87.5%</b>
NT	2,159	2,047	<b>79.8%</b>	<b>75.7%</b>
QLD	48,748	47,209	<b>87.7%</b>	<b>84.9%</b>
SA	19,860	19,373	<b>86.2%</b>	<b>82.6%</b>
TAS	6,222	5,972	<b>88.4%</b>	<b>84.8%</b>
VIC	66,592	65,256	<b>89.8%</b>	<b>88.0%</b>
WA	23,099	20,269	<b>87.9%</b>	<b>82.0%</b>
<b>National</b>	<b>249,160</b>	<b>242,070</b>	<b>88.6%</b>	<b>86.1%</b>

Source: Linkage between National Disability Insurance Agency data and the Australian Immunisation Register. Total NDIS participant numbers as at 17th October. Australian Immunisation Register data as at 09 February. Includes all participants regardless of residence type.

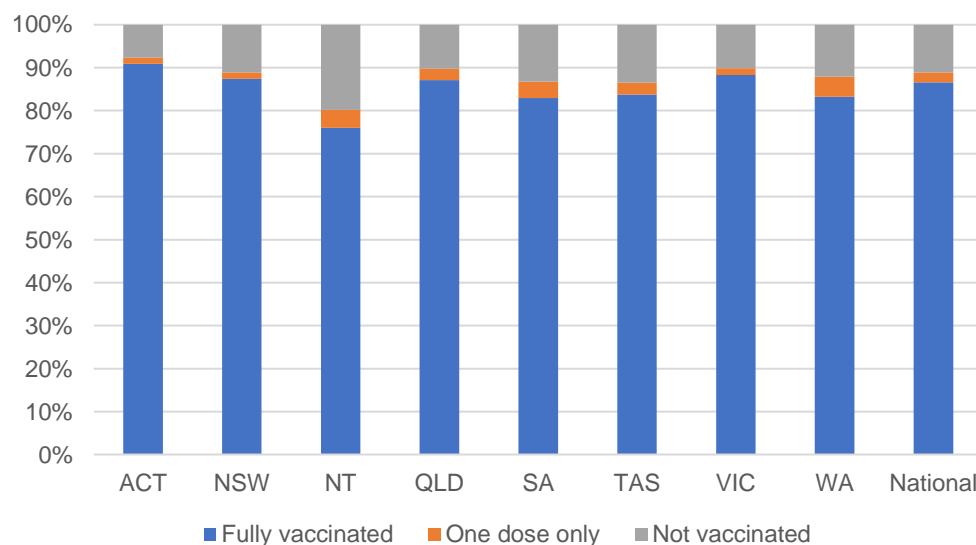
# National Disability Insurance Scheme (NDIS) reported vaccinations

Data as at:  
10 February 2022  
Updated Weekly

Australia's COVID-19  
Vaccine Roadmap

NATIONAL	Total people with at least one dose	People fully vaccinated	Total number of individuals in cohort	% People with at least one dose	% People fully vaccinated
NDIS participants living in disability accommodation	20,319	19,826	22,800	89.1%	87.0%

## NDIS participants in disability and aged care accommodation



Source: Linkage between National Disability Insurance Agency data and the Australian Immunisation Register. Includes participants residing in disability accommodation only.  
Source: Total NDIS participant numbers as at 17th October. Participant data as at 08 February. Australian Immunisation Register data as at 09 February. Worker data as at 09 February.

## NDIS workforce vaccinations

	NDIS workers with at least one dose	NDIS workers fully vaccinated	% NDIS workers with at least one dose	% NDIS workers fully vaccinated
NSW	111,229	110,702	97.6%	97.2%
VIC	105,706	105,231	97.8%	97.3%
QLD	65,650	64,782	96.6%	95.3%
WA	31,968	30,550	98.2%	93.8%
SA	33,871	33,089	97.4%	95.1%
TAS	10,596	10,435	99.5%	98.0%
ACT	3,438	3,431	99.5%	99.3%
NT	3,066	3,023	99.4%	98.0%
<b>TOTAL</b>	<b>365,524</b>	<b>361,243</b>	<b>97.6%</b>	<b>96.5%</b>

Source: the NDIS Commission has established a requirement for registered NDIS providers who provide intensive disability support services to report on the vaccination status of workers they employ, or otherwise engage, to deliver NDIS-funded supports and services, and who are required to be vaccinated in accordance with in-force state and territory public health orders. The statistics reflect data reported to the NDIS Commission by registered NDIS providers and should be considered indicative and subject to change

Note: Some registered NDIS providers are yet to report on the vaccination status of their workforce. The NDIS Commission is working with those providers around reporting requirements.

Remaining workers not included include those exempt from vaccination requirements, workers whose vaccination status is not yet verified by the provider (such as workers on leave) and provider reporting anomalies.

# Residential aged care vaccination rollout

Residential aged care facilities status

**100%**

Commonwealth facilities visited (2,541 planned sites)

**169,947**

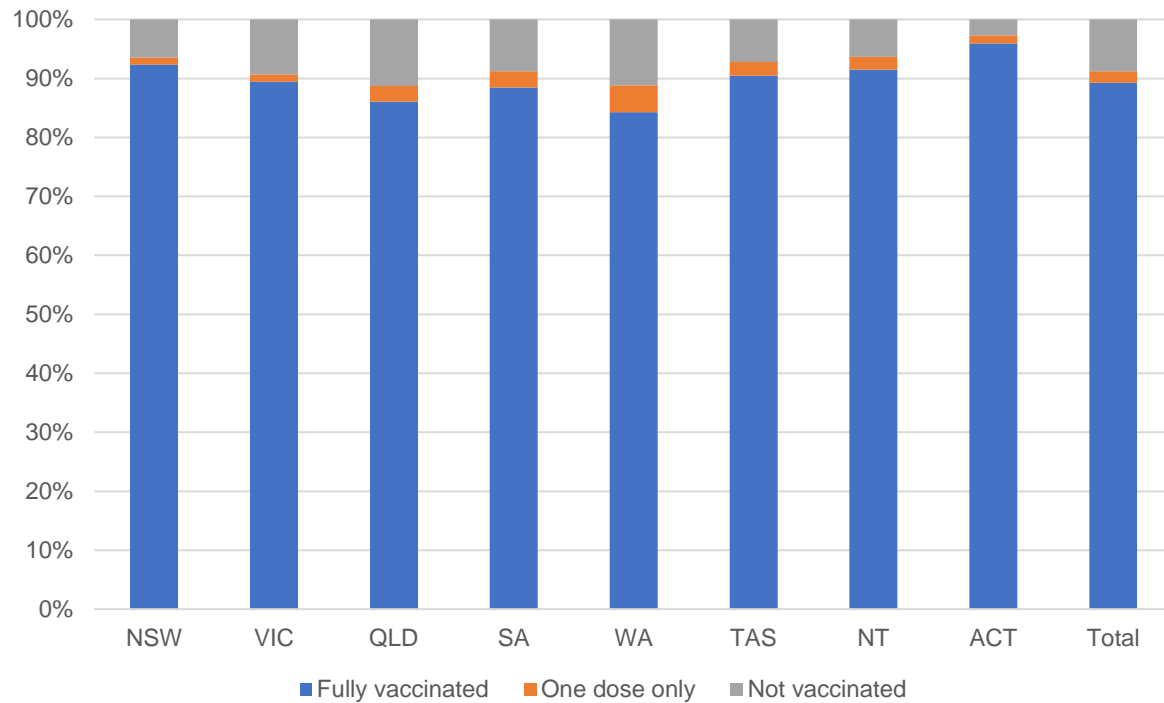
People fully vaccinated

**173,709**

People with at least one dose

Data as at: 10 Feb 2022

## Aged care resident vaccinations



## Aged care worker vaccinations

Jurisdictions	Total workers with at least one dose	Workers fully vaccinated	% Workers with at least one dose	% Workers fully vaccinated
NSW	78,699	78,660	99.1%	99.0%
VIC	69,784	69,783	98.6%	98.6%
QLD	49,068	49,054	99.3%	99.3%
SA	27,045	27,014	98.7%	98.5%
WA	23,792	23,770	98.9%	98.9%
TAS	7,649	7,649	100.0%	100.0%
NT	881	881	100.0%	100.0%
ACT	3,023	3,023	100.0%	100.0%
<b>Total</b>	<b>259,941</b>	<b>259,834</b>	<b>99.0%</b>	<b>98.9%</b>

Source: My Aged Care Portal vaccination progress

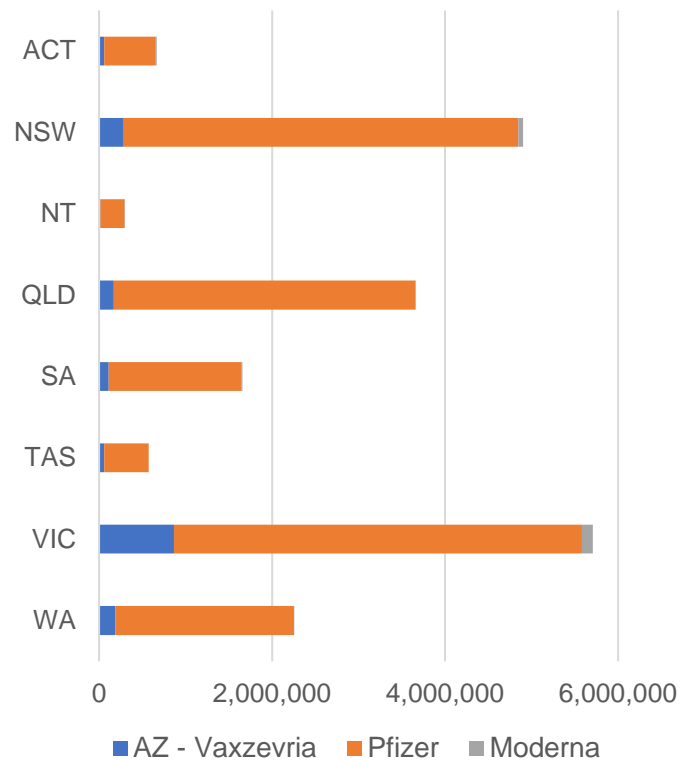
\*Status updates are provided by facilities at least once per week. Reporting is updated Monday to Friday to encompass different facility updates being made on different days.

Data is sourced directly from Aged Care Service Providers and is not drawn or closely aligned with data from AIR due to inconsistencies and potential lags in uploading of records.

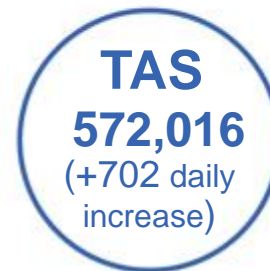
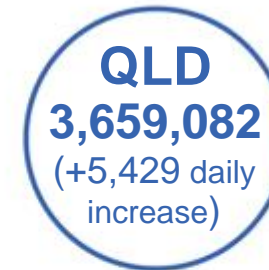
Data as at:  
12 Feb 2022

## Jurisdiction administered

Total vaccine doses administered in State and Territory clinics as at 12 February



**19,714,332** total vaccine doses administered in State and Territory clinics as at 12 February  
 + **44,054** recorded in the last 24 hours  
 + **305,512** recorded in the last 7 days



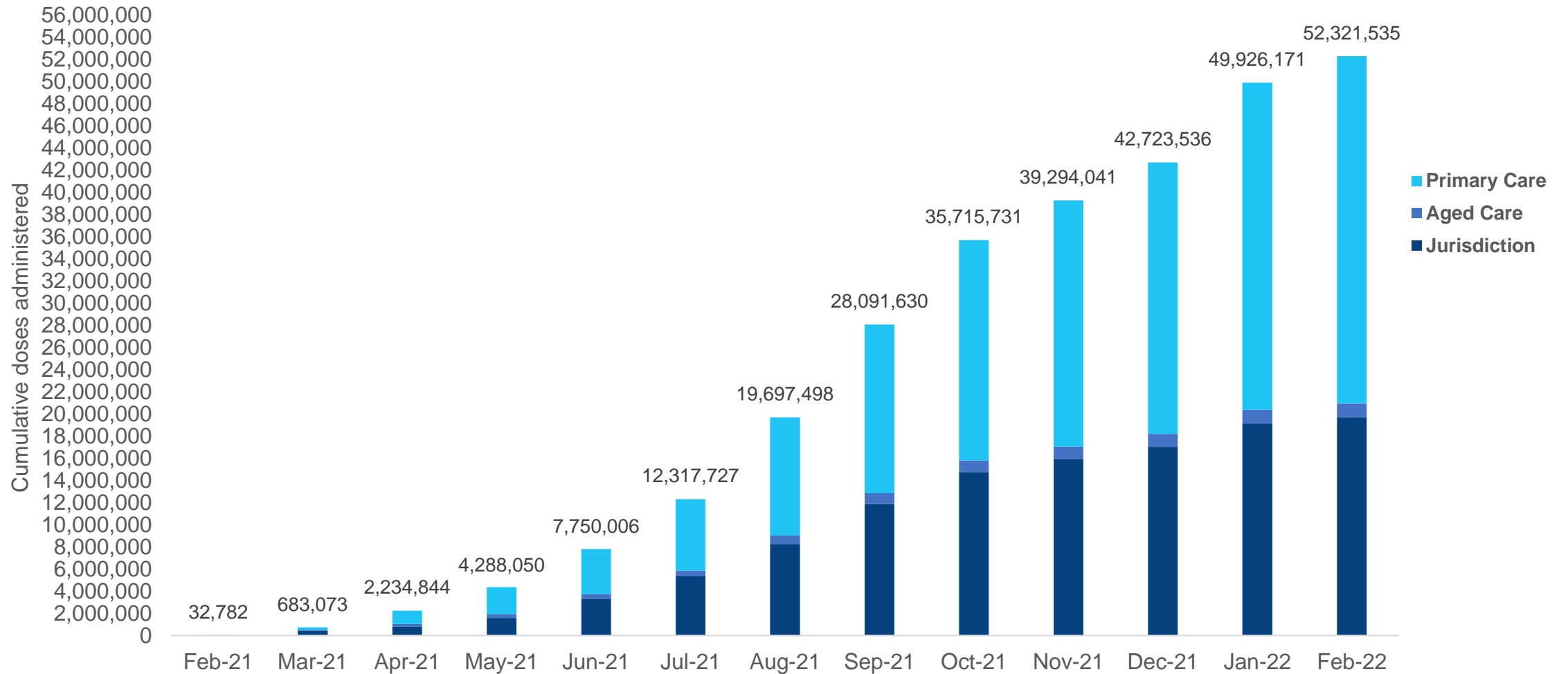
\*Sourced from the Australian Immunisation Register. Numbers are calculated as difference in daily cumulative reported numbers to allow for historical corrections.

Source: Australian Immunisation Register



# Cumulative doses administered by channel

Data as at:  
12 Feb 2022



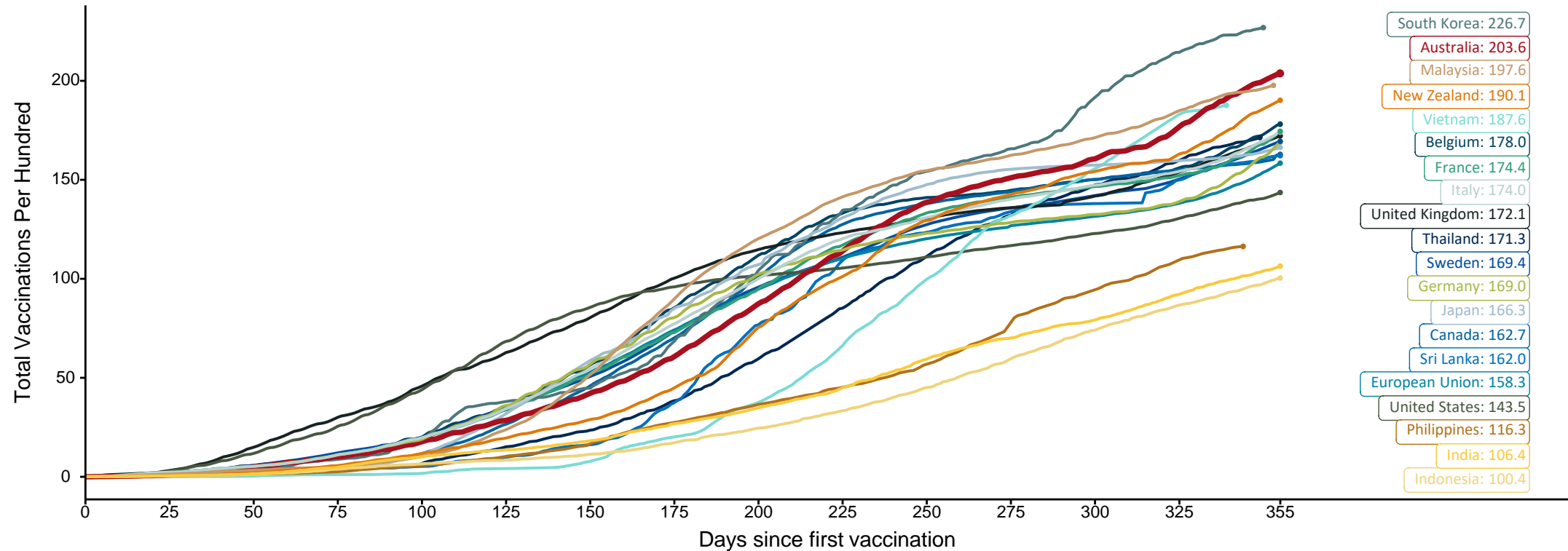
Source: Australian Immunisation Register

# Doses at equivalent stages of rollout (Day 355)

Data as at:  
12 Feb 2022

The x-axis is truncated at the length of Australia's vaccination program. Countries with intermittent reporting have had their doses per 100 imputed to Australia's current stage of rollout. Israel excluded as it is beyond scale of the graph

Cumulative doses administered (12 Feb): **52,321,535**

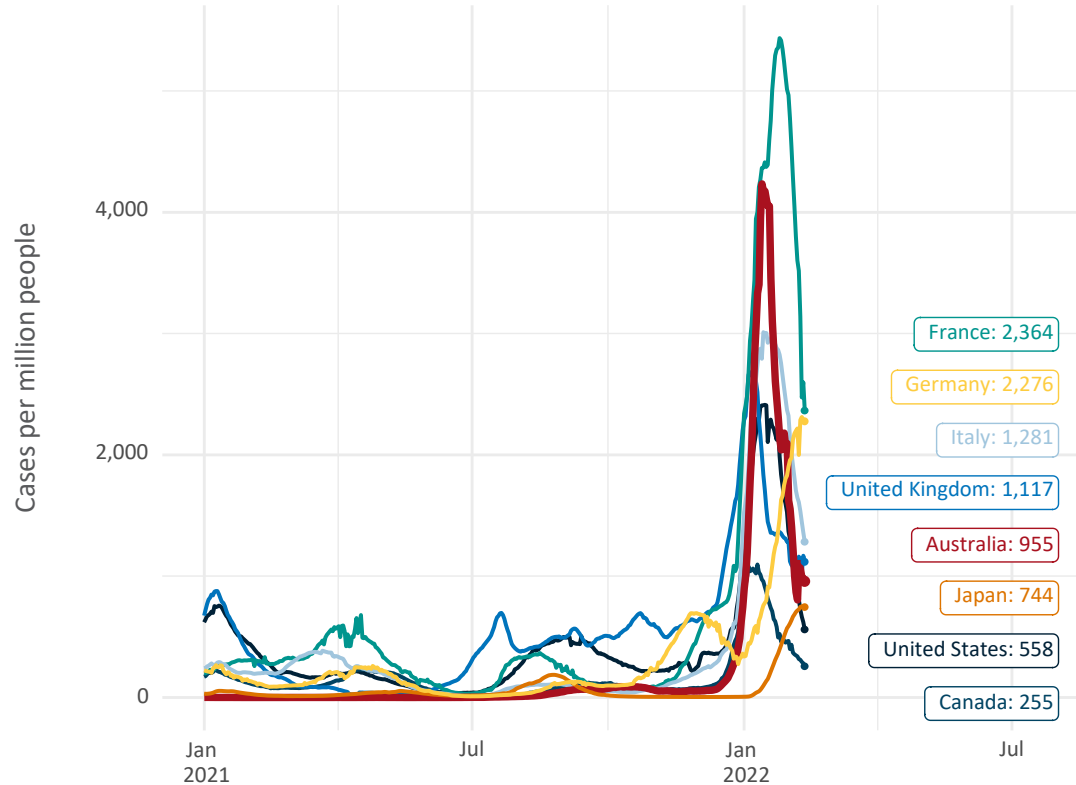


Note: From 15 September 2021, data for Australia includes all doses administered to people 12 and over. Prior to 15 September, data was for 16 and over  
 Due to data revisions, Singapore has been removed from the chart  
 Source: Department of Health (Australia), Our World in Data (international)  
 Latest data: 12 February

Data as at:  
12 Feb 2022

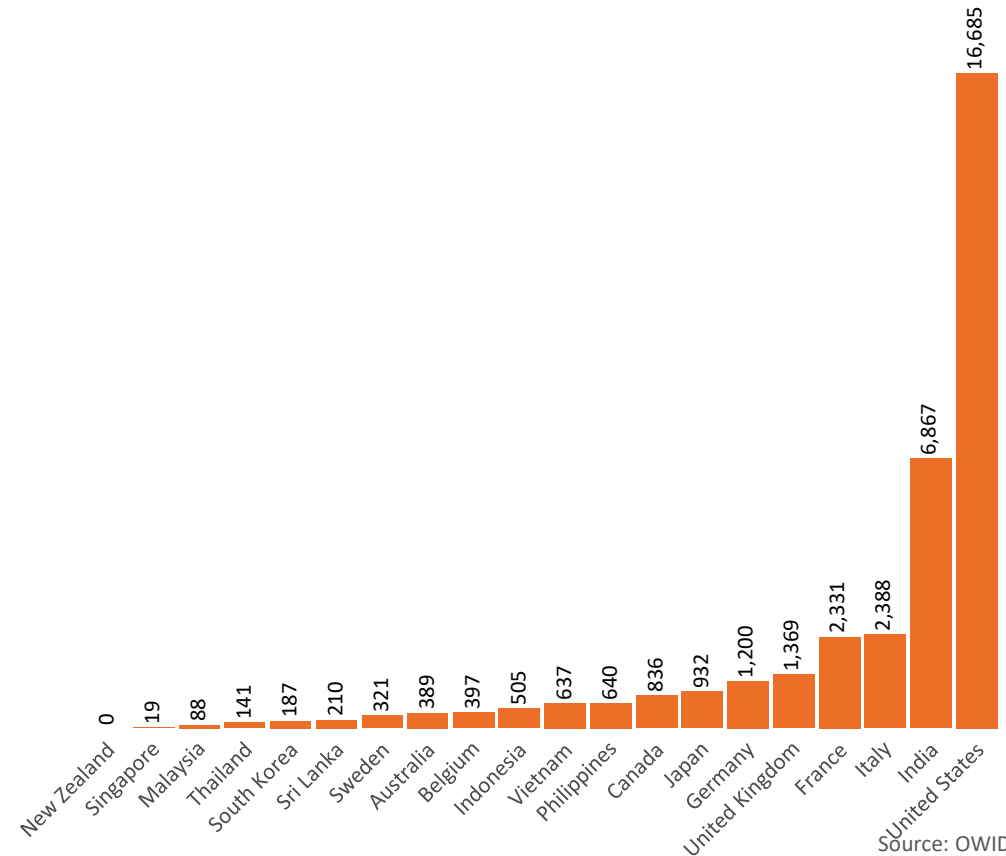
# International data – COVID-19

New daily cases per million in 2021, Australia and G7 countries  
Smoothed - 7 day average



Source: OWID  
Data downloaded: 13 Feb 2022 07:33  
Latest data: 11 Feb 2022

COVID-19 deaths in past 7 days - Australia and select countries

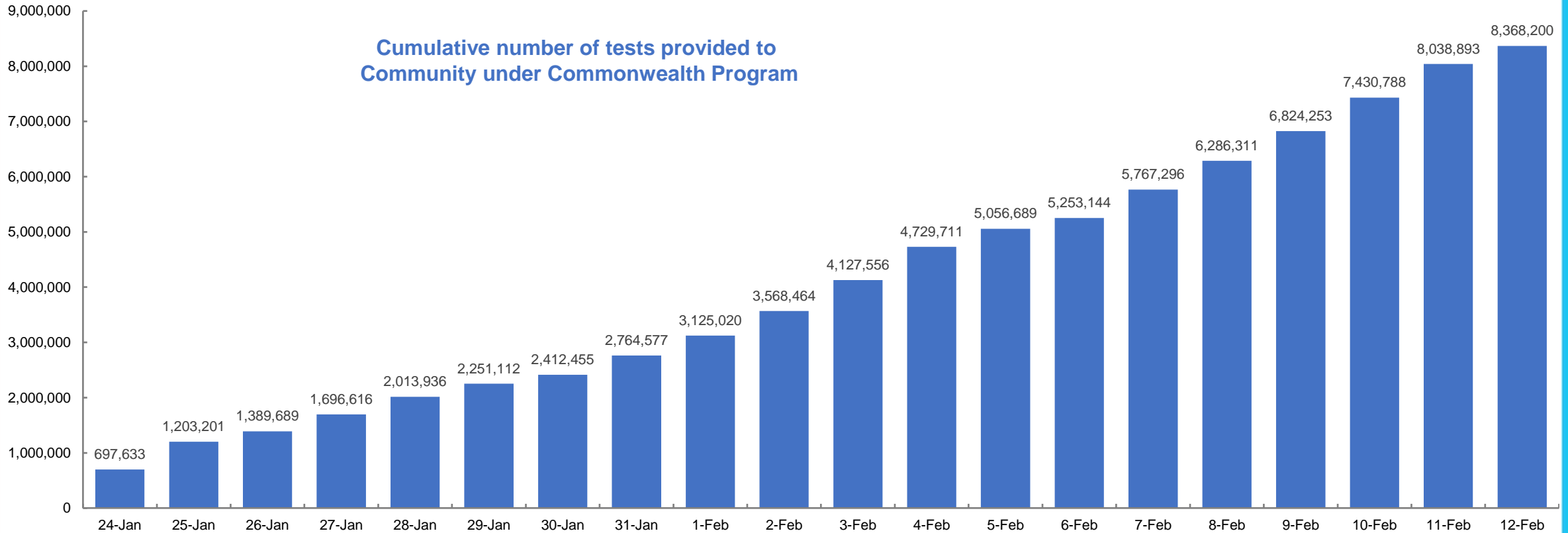


Source: OWID  
Data downloaded: 13 Feb 2022 07:33  
Latest data: 11 Feb 2022

Data as at:  
12 Feb 2022


# Concessional rapid antigen test program

**5,161 pharmacies** have delivered over **8.3 million rapid antigen tests** to more than **1.7 Million eligible concession card holders (to 10 Feb)** under the Government's concessional rapid antigen test program.



Data as at midnight:  
6 Feb 2022  
Updated weekly

# Pandemic Response Payments



**2.38 million**  
People have received at least one COVID Disaster Payment (including ISP200)

---

**\$13.52 billion**  
Paid Out as at 6 Feb 2022

---

**6.72 million**  
Claims granted across three different payments




**92%**  
of Claims Received Digitally



<b>COVID Disaster Payment:</b>	5.89 million claims received - 2.19 million individuals paid a total of \$12.59 billion.
<b>\$200 Income Support Payment:</b>	353,000 claims received - 183,000 individuals paid a total of \$268.9 million.
<b>Pandemic Leave Disaster Payment:</b>	850,000 claims received - 619,000 individuals paid a total of \$661.1 million.

## COVID-19 DISASTER PAYMENTS



**THREE PAYMENTS AVAILABLE**

**COVID Disaster Payment**  
assisting during a lockdown event in a Commonwealth hotspot.

**Income Support Payment \$200**  
for income support recipients who lost at least 8 hours of work.

**Pandemic Leave Disaster Payment**  
for those who have to self-isolate, quarantine or care.

For more information visit:  
[servicesaustralia.gov.au](https://servicesaustralia.gov.au)

**Northern Territory**  
Lockdown (#3) from 16 Nov to 22 Nov  
Claiming period ended 27 Dec

**7,500 people have received at least one COVID Disaster Payment.**

**\$6.9m paid out as at 6 Feb 2022.**

**\$0 paid in initial payments in the week ending 6 Feb 2022.**

Cumulative payments made by Territory since activation on 25 Aug 2021.



Date	Cumulative Payments
9 Jan	\$6.9m
16 Jan	\$6.9m
23 Jan	\$6.9m
30 Jan	\$6.9m
6 Feb	\$6.9m

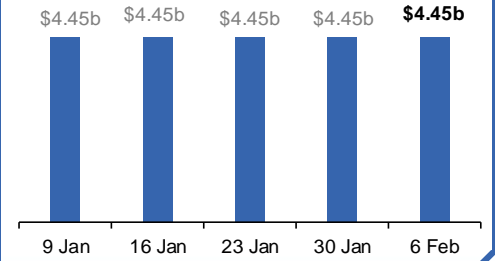
**Victoria**  
Lockdown (#6) from 6 Aug to 28 Oct  
Claiming period ended 9 Dec

**745,000 people have received at least one COVID Disaster Payment.**

**\$4.45b paid out as at 6 Feb 2022.**

**\$7,000 paid in initial and reoccurring payments in the week ending 6 Feb 2022.**

Cumulative payments made by State since activation on 8 Jun 2021.



Date	Cumulative Payments
9 Jan	\$4.45b
16 Jan	\$4.45b
23 Jan	\$4.45b
30 Jan	\$4.45b
6 Feb	\$4.45b

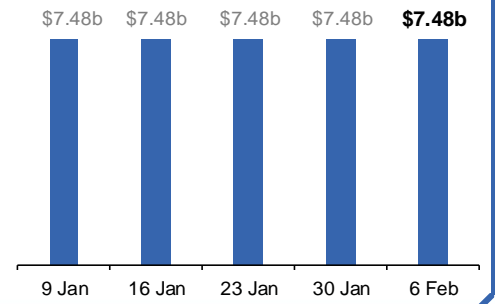
**New South Wales**  
Lockdown from 24 Jun to 10 Oct  
Claiming period ended 27 Nov

**1.08m people have received at least one COVID Disaster Payment.**

**\$7.48b paid out as at 6 Feb 2022.**

**\$4,000 paid in initial and reoccurring payments in the week ending 6 Feb 2022.**

Cumulative payments made by State since activation on 1 Jul 2021.



Date	Cumulative Payments
9 Jan	\$7.48b
16 Jan	\$7.48b
23 Jan	\$7.48b
30 Jan	\$7.48b
6 Feb	\$7.48b

**Australian Capital Territory**  
Lockdown from 12 Aug to 14 Oct  
Claiming period ended 25 Nov

**65,000 people have received at least one COVID Disaster Payment.**

**\$344.7m paid out as at 6 Feb 2022.**

**\$1,000 paid in initial and reoccurring payments in the week ending 6 Feb 2022.**

Cumulative payments made by Territory since activation on 20 Aug 2021.



Date	Cumulative Payments
9 Jan	\$344.7m
16 Jan	\$344.7m
23 Jan	\$344.7m
30 Jan	\$344.7m
6 Feb	\$344.7m

Data as at midnight:  
6 Feb 2022  
Updated weekly

# Pandemic Response Payments (continued)

## COVID-19 DISASTER PAYMENTS

### Tasmania

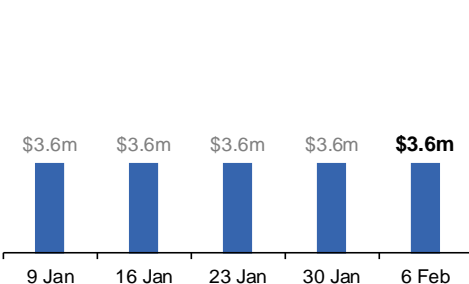
Lockdown from 15 Oct to 18 Oct  
Claiming period ended 12 Nov

**6,900 people have received at least one COVID Disaster Payment.**

**\$3.6m paid out as at 6 Feb 2022.**

**\$0 paid in initial and reoccurring payments in the week ending 6 Feb 2022.**

Cumulative payments made by State since activation on 22 Oct 2021.



### Queensland

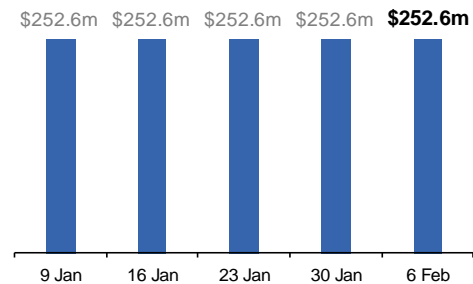
Lockdown from 31 Jul to 11 Aug  
Claiming period ended 28 Aug

**196,000 people have received at least one COVID Disaster Payment.**

**\$252.6m paid out as at 6 Feb 2022.**

**\$0 paid in initial and reoccurring payments in the week ending 6 Feb 2022.**

Cumulative payments made by State since activation on 7 Aug 2021.



### South Australia

Lockdown from 21 to 27 Jul  
Claiming period ended 17 Aug

**86,000 people have received at least one COVID Disaster Payment.**

**\$48.2m paid out as at 6 Feb 2022.**

**\$0 paid in initial and reoccurring payments in the week ending 6 Feb 2022.**

Cumulative payments made by State since activation on 28 Jul 2021.

