



Australian Government
Operation COVID Shield

COVID-19 Vaccine Roll-out

12 February 2022

Data as at:
11 Feb 2022

Total vaccine doses



52,212,465 total vaccine
doses administered nationally as at 11 February
+203,969 recorded in the last 24 hours



19,773,060

people have had at least one
dose

>95%

of people over the age of 16
have had at least one dose



19,376,508

people are fully vaccinated

94.0%

of people over the age of 16 are
fully vaccinated



9,901,711

people over the age of 16
who have received more
than two doses

NSW
16,442,035
(+54,246 daily
increase)

VIC
13,793,556
(+57,420 daily
increase)

QLD
9,999,864
(+34,847 daily
increase)

WA
5,430,979
(+32,078 daily
increase)

TAS
1,154,850
(+4,503 daily
increase)

SA
3,581,254
(+13,601 daily
increase)

ACT
1,304,772
(+5,213 daily
increase)

NT
505,155
(+2,061 daily
increase)

*Administration state breakdown indicates state in which a vaccine was administered

**Overall dose count includes instances of more than two doses per person in a small number of cases.

Source: Australian Immunisation Register

Booster Vaccinations

Australia's COVID-19
Vaccine Roadmap

Data as at:
11 Feb 2022



9,901,711 total people over the age of 16 years old
who have received more than two doses nationally

+174,198 people who have received more than two doses
nationally in the last 24 hours

NSW
3,152,447
(49,524 daily
increase)

VIC
2,676,055
(51,422 daily
increase)

QLD
1,759,759
(28,502 daily
increase)

WA
1,041,472
(23,840 daily
increase)

TAS
214,081
(3,727 daily
increase)

SA
703,801
(11,239 daily
increase)

ACT
209,991
(2,836 daily
increase)

NT
78,040
(1,380 daily
increase)

66,065

doses administered to persons
residing in other territories or with
missing residential information

Source: Australian Immunisation Register

Vaccinations by residential location

Australia's COVID-19 Vaccine Roadmap

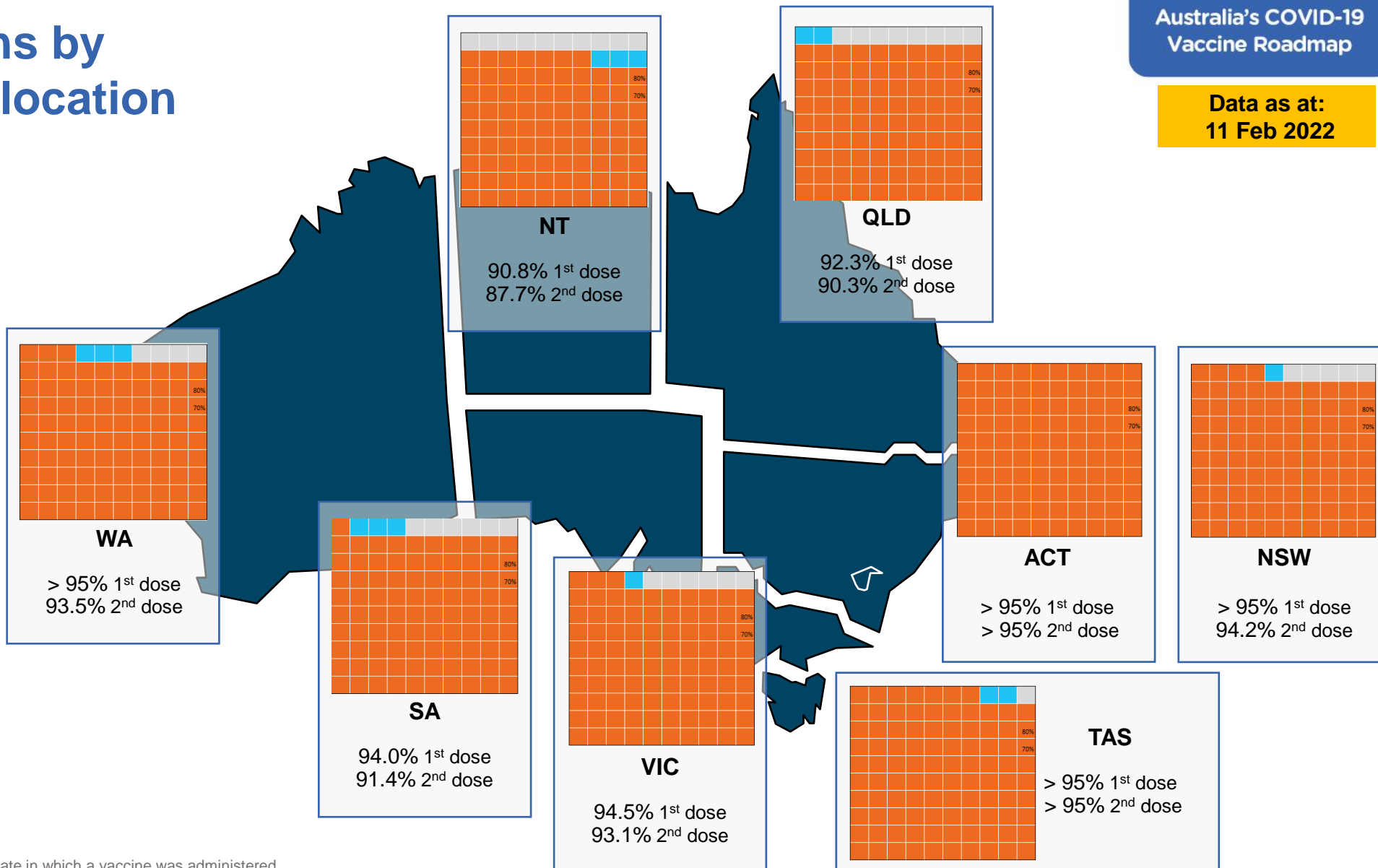
Data as at:
11 Feb 2022

First doses

Age	Today	4 weeks ago	8 weeks ago
16+	>95%	>95%	94.2%
50+	>95%	>95%	>95%
70+	>95%	>95%	>95%

Fully vaccinated

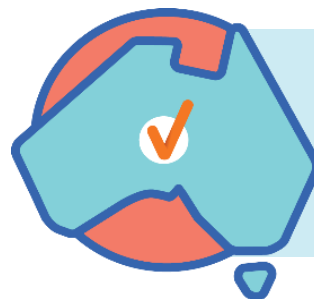
Age	Today	4 weeks ago	8 weeks ago
16+	94.0%	92.8%	90.8%
50+	>95%	>95%	>95%
70+	>95%	>95%	>95%



*Residential state may differ from the state in which a vaccine was administered

Commonwealth and Jurisdiction vaccine doses administered

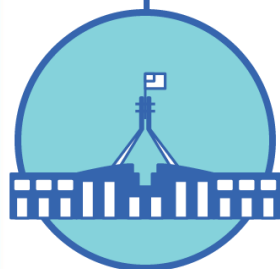
Data as at:
11 Feb 2022



52,212,465 total vaccine
doses administered nationally as at 11 February
+ 203,969 recorded in the last 24 hours



19,670,278
doses administered by state
and territory facilities
+ 44,104
recorded in the last 24 hours



32,542,187
doses administered by
commonwealth facilities
+ 159,865
recorded in the last 24 hours

31,298,292 total vaccine doses
administered in primary care settings
1,243,895 total vaccine doses
administered in aged care and disability
settings

NSW	Jurisdictions	Commonwealth
Cumulative	4,896,805	11,545,230
Daily increase	5,657	48,589

VIC	Jurisdictions	Commonwealth
Cumulative	5,694,509	8,099,047
Daily increase	14,934	42,486

QLD	Jurisdictions	Commonwealth
Cumulative	3,653,653	6,346,211
Daily increase	5,453	29,394

WA	Jurisdictions	Commonwealth
Cumulative	2,242,511	3,188,468
Daily increase	8,585	23,493

TAS	Jurisdictions	Commonwealth
Cumulative	571,314	583,536
Daily increase	1,106	3,397

SA	Jurisdictions	Commonwealth
Cumulative	1,653,031	1,928,223
Daily increase	4,282	9,319

ACT	Jurisdictions	Commonwealth
Cumulative	662,966	641,806
Daily increase	2,935	2,278

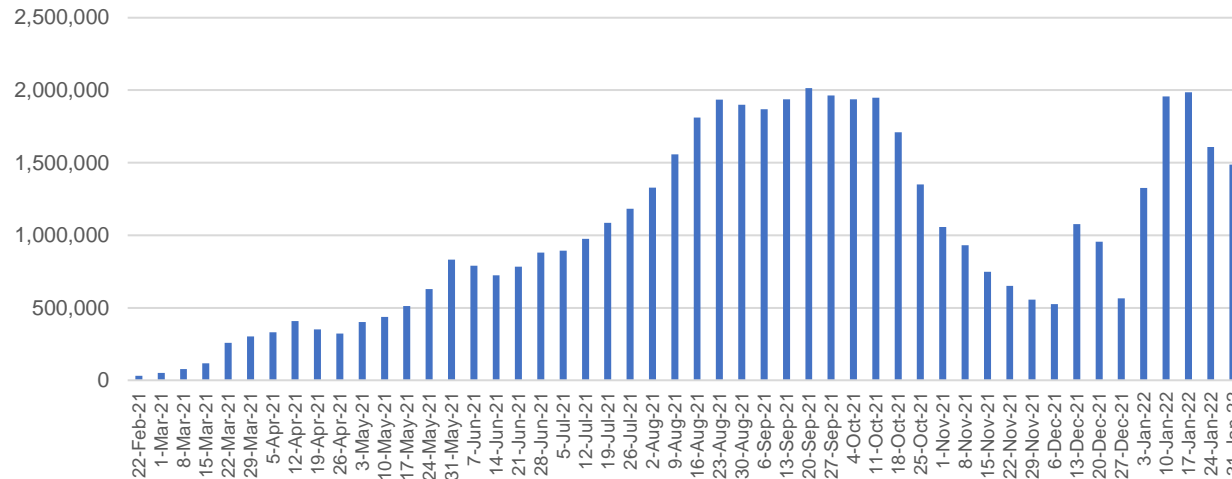
NT	Jurisdictions	Commonwealth
Cumulative	295,489	209,666
Daily increase	1,152	909

Vaccine milestone charts

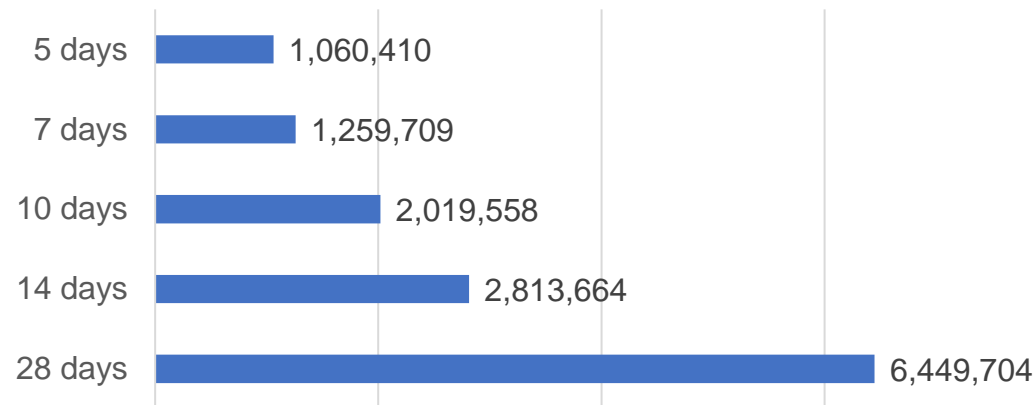
Data as at:
11 Feb 2022

Australia's COVID-19
Vaccine Roadmap

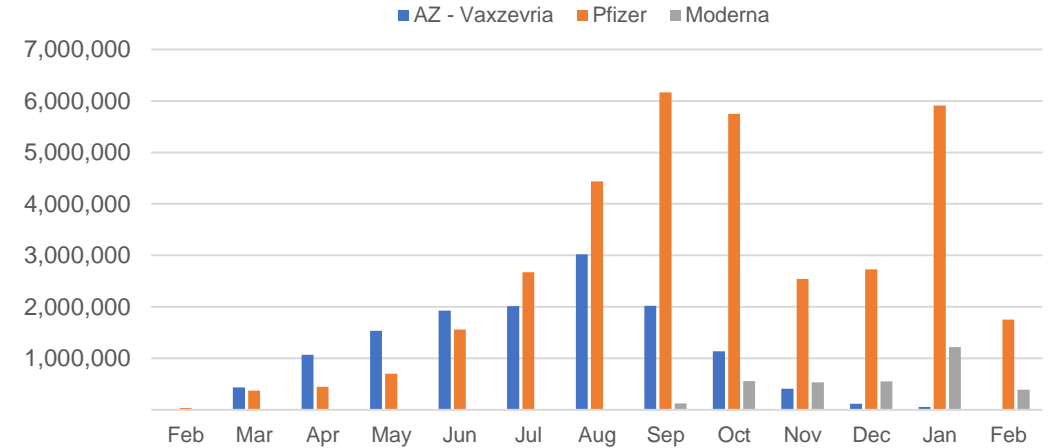
Doses Administered by Week



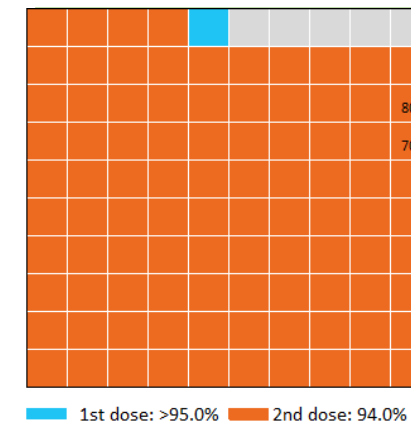
Doses Reported



Doses by administration month and vaccine type



Eligible population percentage coverage



*Each square represents 1% of the national population.
Squares are filled as milestones are achieved.

*Sourced from the Australian Immunisation Register.

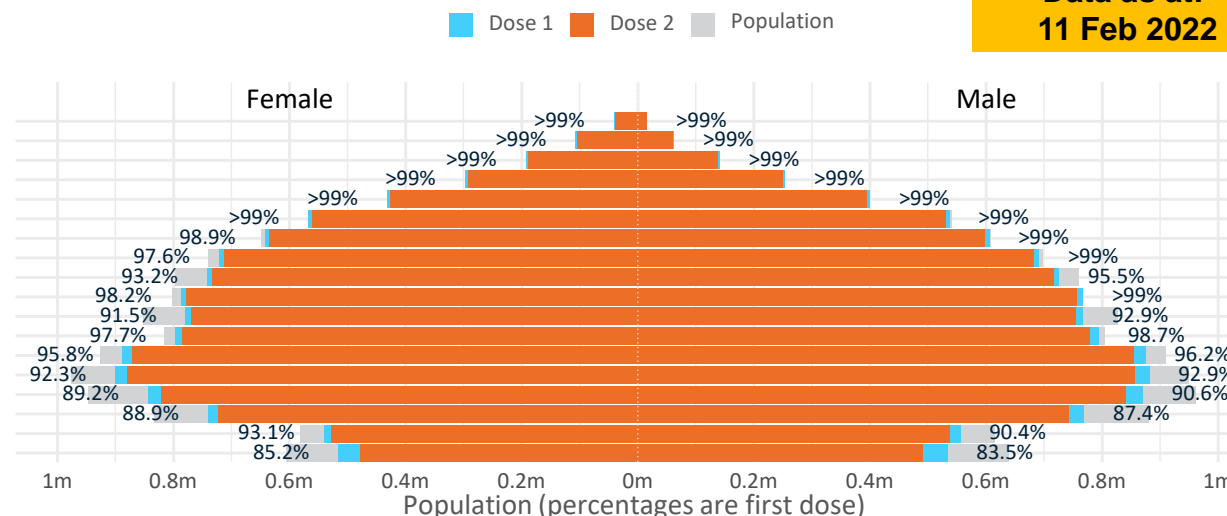
Doses by age and sex

First and second doses by age and sex

Australia's COVID-19
Vaccine Roadmap

Data as at:
11 Feb 2022

Age	Dose 1	Dose 2
95+	57,498 (>99%)	53,879 (>99%)
90-94	170,351 (>99%)	163,873 (>99%)
85-89	334,387 (>99%)	325,901 (>99%)
80-84	551,764 (>99%)	542,595 (>99%)
75-79	832,233 (>99%)	821,959 (>99%)
70-74	1,105,294 (>99%)	1,092,380 (98.9%)
65-69	1,249,625 (>99%)	1,233,688 (98.1%)
60-64	1,414,202 (98.4%)	1,395,767 (97.2%)
55-59	1,468,968 (94.4%)	1,449,822 (93.2%)
50-54	1,555,568 (>99%)	1,534,758 (98.1%)
45-49	1,547,344 (92.3%)	1,523,771 (90.9%)
40-44	1,593,457 (98.3%)	1,563,954 (96.5%)
35-39	1,766,640 (96.3%)	1,728,027 (94.2%)
30-34	1,789,235 (93.0%)	1,740,663 (90.5%)
25-29	1,723,866 (90.4%)	1,670,501 (87.6%)
20-24	1,515,392 (88.5%)	1,470,435 (85.9%)
16-19	1,097,236 (91.8%)	1,064,535 (89.0%)
12-15	1,049,423 (84.4%)	968,550 (77.9%)

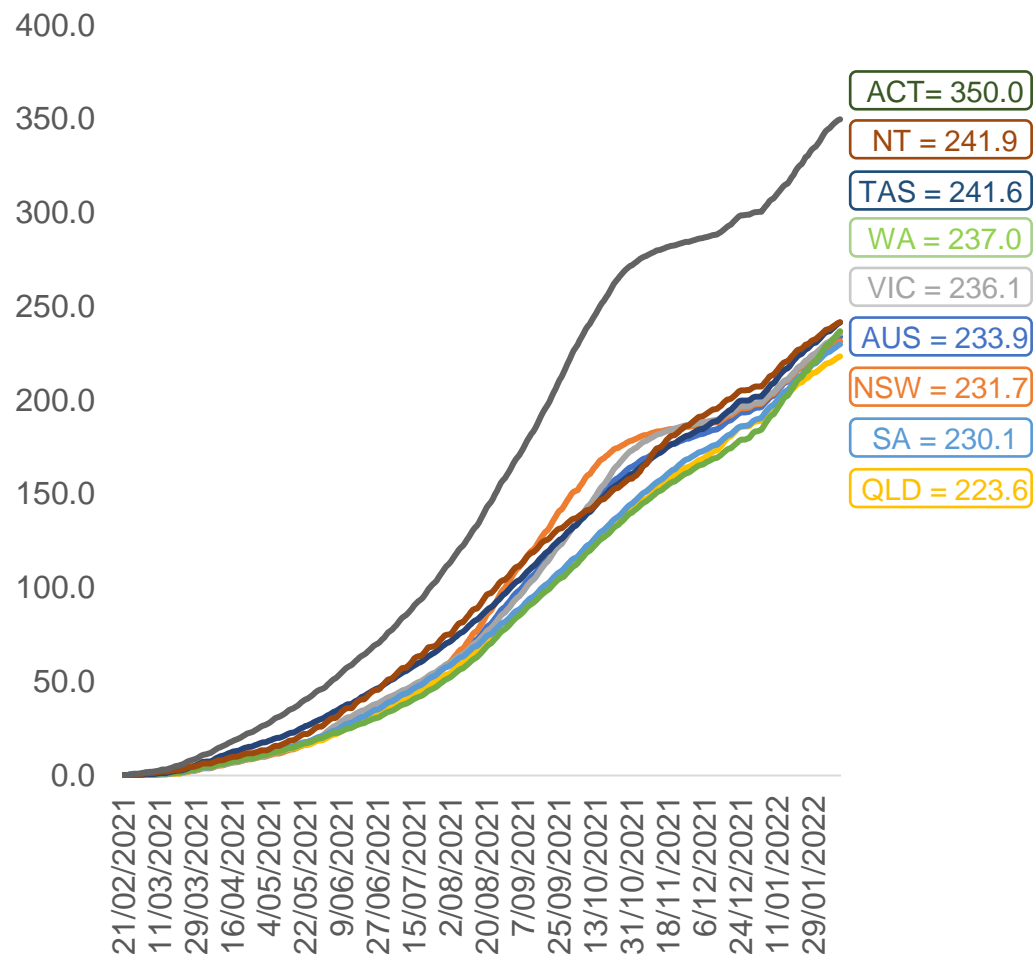


	AUS	ACT	NSW	NT	QLD	SA	TAS	VIC	WA
16 and over - dose 1	19,773,060	349,732	6,275,456	173,063	3,797,670	1,354,683	439,234	5,108,155	2,045,977
16 and over - dose 2	19,376,508	344,659	6,182,939	167,168	3,712,885	1,316,290	427,413	5,036,520	1,977,931
16 and over - population	20,619,959*	344,037	6,565,651	190,571	4,112,707	1,440,400	440,172	5,407,574	2,114,978
16 and over % with dose 1	95.89%	>99%	95.58%	90.81%	92.34%	94.05%	>99%	94.46%	96.74%
16 and over % with dose 2	93.97%	>99%	94.17%	87.72%	90.28%	91.38%	97.10%	93.14%	93.52%
5 to 11 - dose 1	1,073,352	29,861	323,757	11,780	195,966	76,862	27,032	298,554	103,013
5 to 11 - dose 2	8,089	147	3,382	75	1,461	238	41	2,425	276
5 to 11 - population	2,276,638	39,789	716,460	24,750	478,731	148,816	45,033	578,499	244,154
5 to 11 % with dose 1	47.15%	75.05%	45.19%	47.60%	40.93%	51.65%	60.03%	51.61%	42.19%
5 to 11 % with dose 2	0.36%	0.37%	0.47%	0.31%	0.31%	0.16%	0.09%	0.42%	0.11%
12 to 15 - dose 1	1,049,423	20,055	326,139	10,845	207,185	67,824	22,742	275,827	109,404
12 to 15 - dose 2	968,550	19,187	307,845	9,516	188,000	61,861	20,693	261,186	92,323
12 to 15 - population	1,243,990	19,693	390,330	13,060	270,146	82,747	26,308	308,611	132,869
12 to 15 % with dose 1	84.36%	>99%	83.55%	83.04%	76.69%	81.97%	86.45%	89.38%	82.34%
12 to 15 % with dose 2	77.86%	97.43%	78.87%	72.86%	69.59%	74.76%	78.66%	84.63%	69.48%

*National population will not equal sum of listed jurisdictions due to a small number of people counted in national population residing in some 'other' territories. Sum of state doses will not add to national total as some records are unable to be geocoded to a State or Territory.
Doses sourced from Australian Immunisation Register, population from ABS ERP June 2020

Vaccinations by location

Cumulative total doses administered vs eligible state populations*

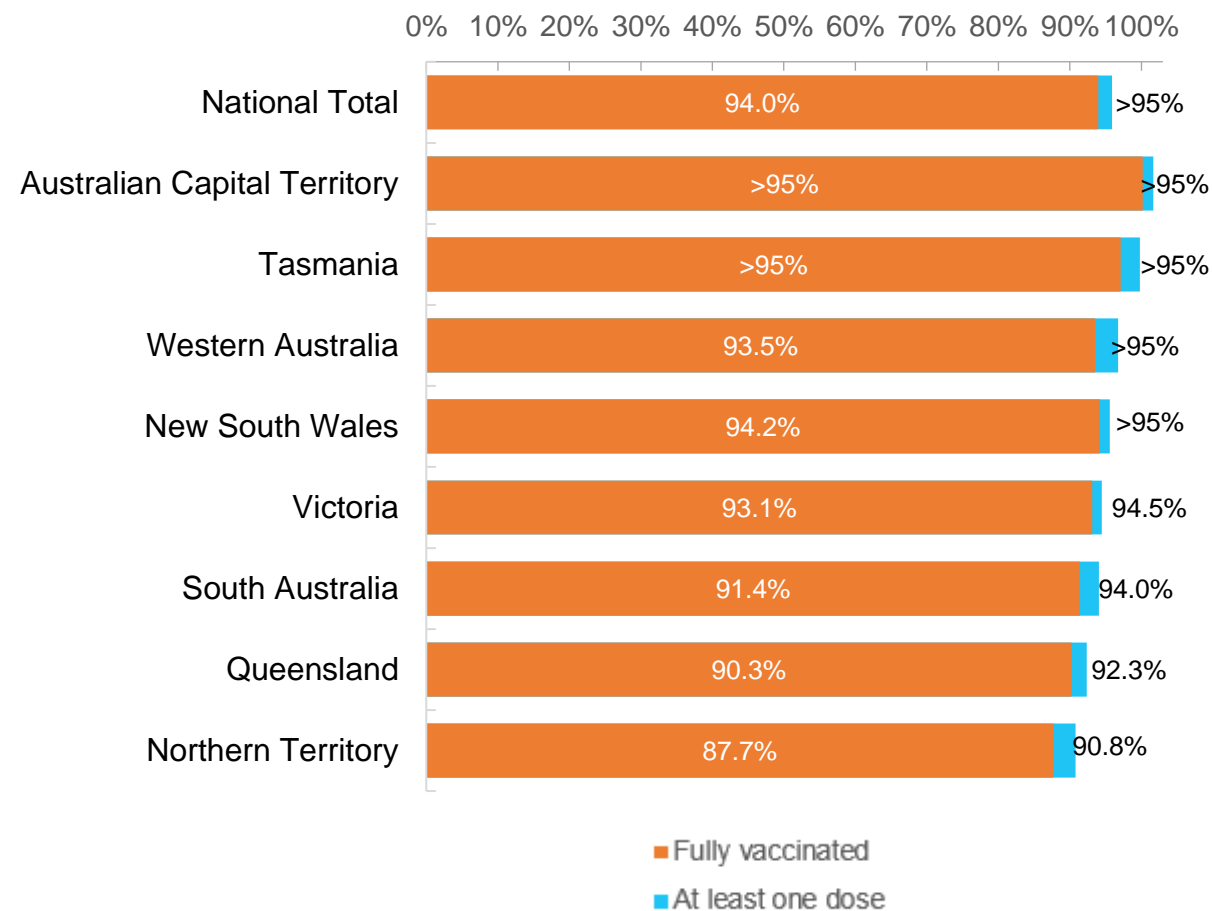


*Not an indication of percentage vaccinated, numbers will exceed 100 due to multiple doses required per person of the population. All doses are included for those aged 12 and above, and are based on vaccination provider location.

Data as at:
11 Feb 2022

Australia's COVID-19
Vaccine Roadmap

First and Second Doses by residential location



Aboriginal and Torres Strait Islander peoples

Number of people vaccinated

Data as at:
08 Feb 2022
Updated weekly

Australia's COVID-19
Vaccine Roadmap



428,426

people over the age of 16
have had at least one dose

82.3%

of people over the age of 16
have had at least one dose



398,952

people over the age of 16
are fully vaccinated

76.6%

of people over the age of 16 are
fully vaccinated



**46,782
(65.9%)**

people aged 12-15 years
have had at least one dose

175 Aboriginal community controlled health services (ACCHS)

0#	50	27	43	12	3	21	19
ACT	NSW	NT	QLD	SA	TAS	VIC	WA

Medicare Address State ^{##}	Individuals Dose 1	Individuals Dose 1 %	Individuals Dose 2	Individuals Dose 2 %
Australian Capital Territory	4,870	91.1%	4,736	88.6%
New South Wales	135,151	86.4%	131,547	84.1%
Northern Territory	41,456	87.8%	38,065	80.6%
Queensland	112,908	79.6%	104,458	73.6%
South Australia	19,428	77.7%	17,458	69.8%
Tasmania	14,252	87.6%	13,572	83.4%
Victoria	35,192	89.1%	34,228	86.6%
Western Australia	49,049	77.8%	41,228	65.4%
Unknown/Other Territories	16,120	62.2%	13,660	52.7%
Totals	428,426	82.3%	398,952	76.6%

Source: Australian Immunisation Register

*Identifying as Aboriginal and Torres Strait Islander is optional and the estimated population may be under reported.

**Includes all Aboriginal and Torres Strait Islander peoples who have received a vaccination, not limited to those administered in an ACCHS setting

#ACCHS in the ACT are currently operating as a Commonwealth Vaccine Clinics so not included to avoid double counting

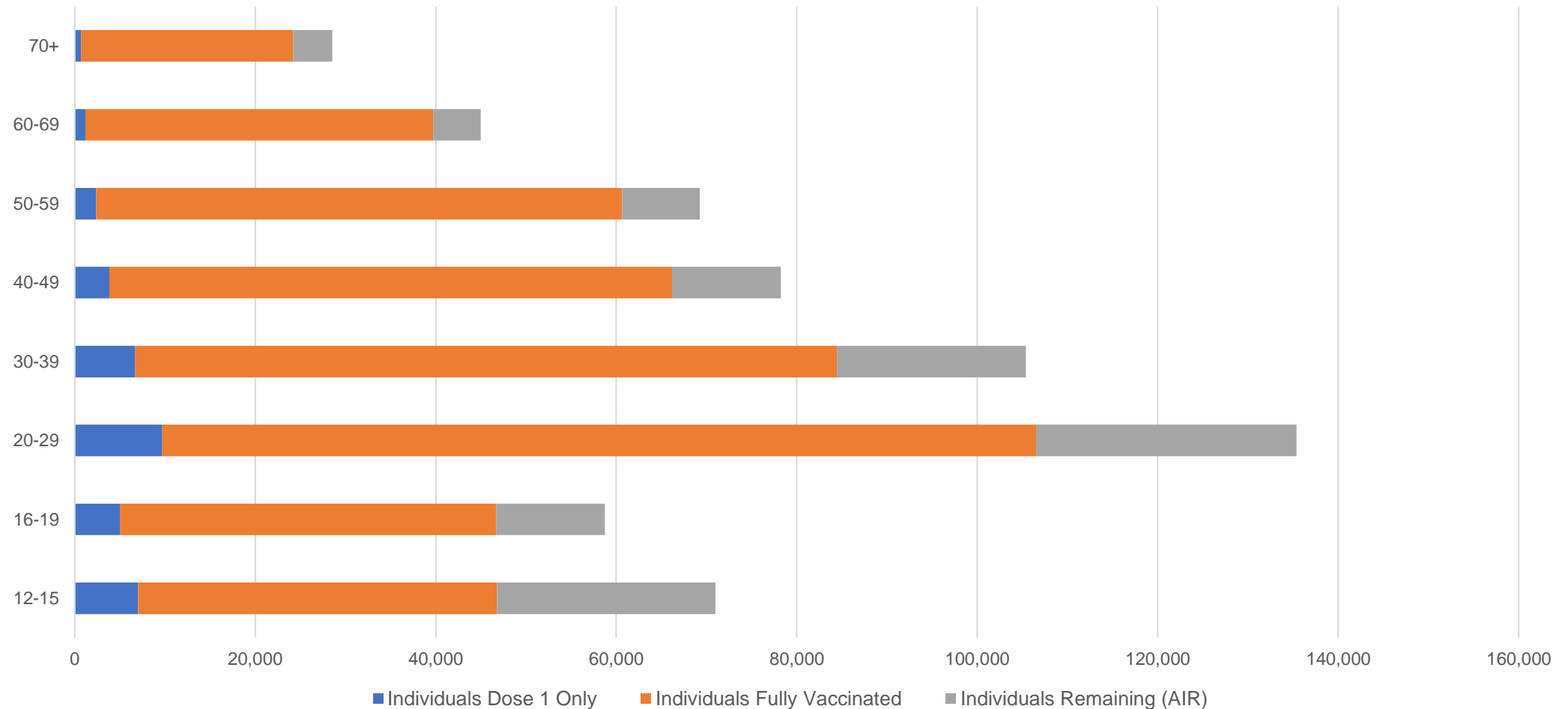
##The above table includes all identified Aboriginal and Torres Strait Islander people who are aged 16 and above by their state of residence.

Aboriginal and Torres Strait Islander peoples

Number of people vaccinated by age

Data as at:
08 Feb 2022
Updated weekly

Australia's COVID-19
Vaccine Roadmap



Source: Australian Immunisation Register

Commonwealth primary care

Data as at:
11 Feb 2022

Australia's COVID-19
Vaccine Roadmap



Primary care vaccine administration sites

5,745	128	174	3,537
GPs	CVCs	ACCHS	Pharmacies



31,298,292 total vaccine doses administered
primary care settings as at 11 February
+ 157,354 recorded in the last 24 hours

Primary care vaccinations by provider type

	Doses administered	Daily increase	7 day increase
General Practice* includes other Commonwealth	25,818,515	102,619	635,213
Pharmacy	5,479,777	54,735	308,506

NSW
11,010,181
(+47,800 daily increase)

VIC
7,800,267
(+40,707 daily increase)

QLD
6,072,174
(+28,246 daily increase)

WA
3,069,653
(+23,093 daily increase)

TAS
565,260
(+3,305 daily increase)

SA
1,852,117
(+9,294 daily increase)

ACT
497,733
(+2,072 daily increase)

NT
188,928
(+839 daily increase)

241,979

doses administered to persons
residing in other territories or with
missing residential information

*General practice includes Commonwealth Vaccination Clinics, Aboriginal Community Health Centres, Royal Flying Doctor Service and other Commonwealth vaccination facilities

Source: Australian Immunisation Register

Data as at:
11 Feb 2022

Commonwealth aged care and disability doses administered



1,243,895 (+ 2,511 last 24 hours)

Total vaccine doses administered in aged care and disability facilities as at 11 February

Number of doses administered as part of the Commonwealth aged and disability care rollout

NSW
553,348
(+734 daily increase)

VIC
237,107
(+683 daily increase)

QLD
196,287
(+589 daily increase)

WA
97,633
(+277 daily increase)

TAS
22,017
(+21 daily increase)

SA
83,162
(+92 daily increase)

ACT
16,153
(+40 daily increase)

NT
7,015
(+0 daily increase)

31,173

doses administered to persons
residing in other territories or with
missing residential information

*Sourced from the Australian Immunisation Register. Includes all persons vaccinated at participating residential aged care, disability and related industry settings.

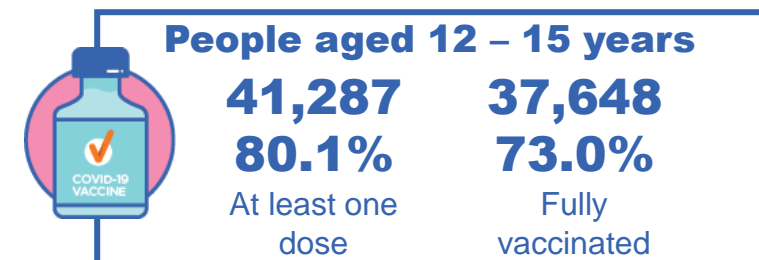
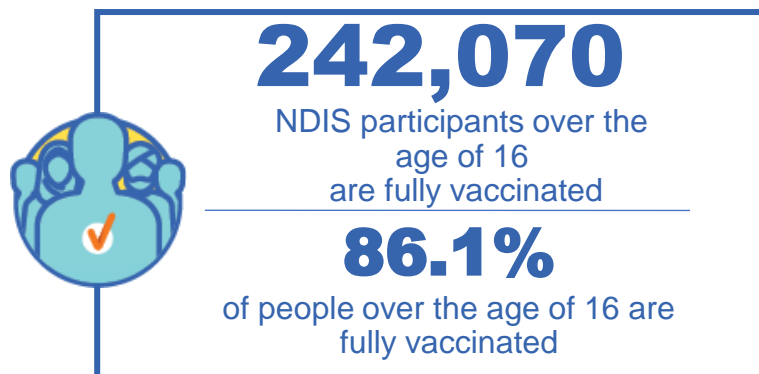
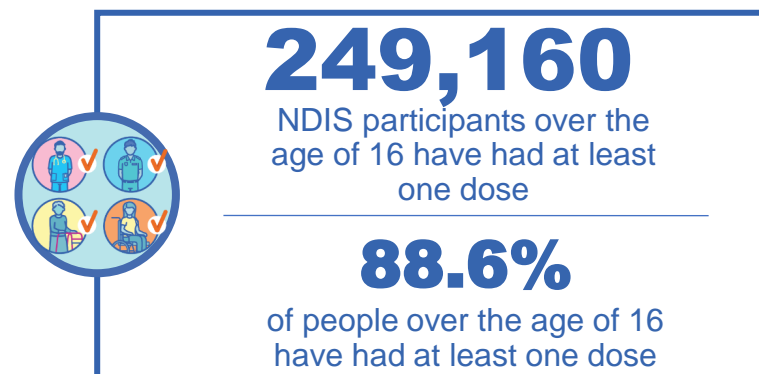
**State level breakdown indicates the residential location and may not align to the state in which the vaccination occurred.

Source: Australian Immunisation Register

National Disability Insurance Scheme (NDIS) reported vaccinations

Data as at:
10 February 2022
Updated weekly

Australia's COVID-19
Vaccine Roadmap



NDIS participant vaccinations

	People aged 16+ with at least one dose	People aged 16+ fully vaccinated	% People aged 16+ with at least one dose	% People aged 16+ fully vaccinated
ACT	4,773	4,697	90.8%	89.4%
NSW	77,357	75,976	89.1%	87.5%
NT	2,159	2,047	79.8%	75.7%
QLD	48,748	47,209	87.7%	84.9%
SA	19,860	19,373	86.2%	82.6%
TAS	6,222	5,972	88.4%	84.8%
VIC	66,592	65,256	89.8%	88.0%
WA	23,099	20,269	87.9%	82.0%
National	249,160	242,070	88.6%	86.1%

Source: Linkage between National Disability Insurance Agency data and the Australian Immunisation Register. Total NDIS participant numbers as at 17th October. Australian Immunisation Register data as at 09 February. Includes all participants regardless of residence type.

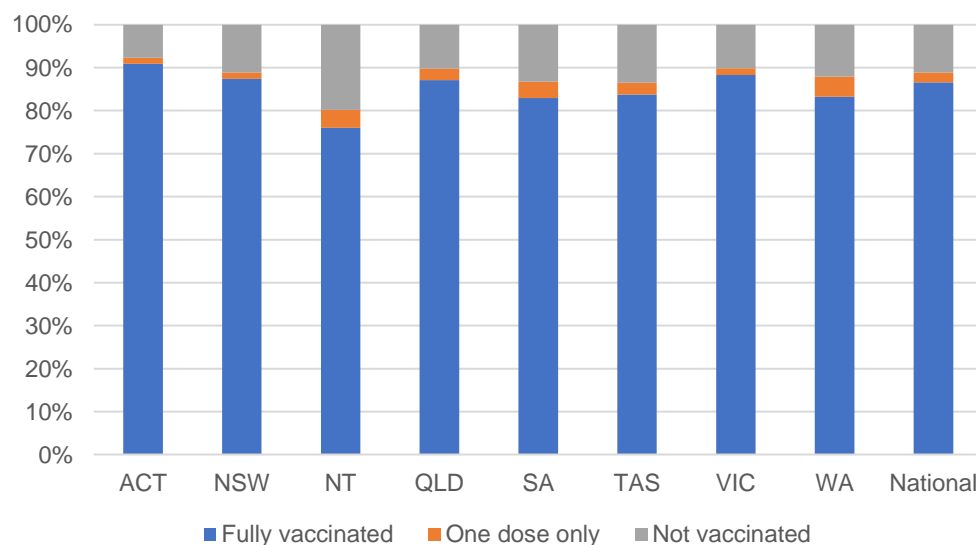
National Disability Insurance Scheme (NDIS) reported vaccinations

Data as at:
10 February 2022
Updated Weekly

Australia's COVID-19
Vaccine Roadmap

NATIONAL	Total people with at least one dose	People fully vaccinated	Total number of individuals in cohort	% People with at least one dose	% People fully vaccinated
NDIS participants living in disability accommodation	20,319	19,826	22,800	89.1%	87.0%

NDIS participants in disability and aged care accommodation



Source: Linkage between National Disability Insurance Agency data and the Australian Immunisation Register. Includes participants residing in disability accommodation only.

Source: Total NDIS participant numbers as at 17th October. Participant data as at 08 February. Australian Immunisation Register data as at 09 February. Worker data as at 09 February.

NDIS workforce vaccinations

	NDIS workers with at least one dose	NDIS workers fully vaccinated	% NDIS workers with at least one dose	% NDIS workers fully vaccinated
NSW	111,229	110,702	97.6%	97.2%
VIC	105,706	105,231	97.8%	97.3%
QLD	65,650	64,782	96.6%	95.3%
WA	31,968	30,550	98.2%	93.8%
SA	33,871	33,089	97.4%	95.1%
TAS	10,596	10,435	99.5%	98.0%
ACT	3,438	3,431	99.5%	99.3%
NT	3,066	3,023	99.4%	98.0%
TOTAL	365,524	361,243	97.6%	96.5%

Source: the NDIS Commission has established a requirement for registered NDIS providers who provide intensive disability support services to report on the vaccination status of workers they employ, or otherwise engage, to deliver NDIS-funded supports and services, and who are required to be vaccinated in accordance with in-force state and territory public health orders. The statistics reflect data reported to the NDIS Commission by registered NDIS providers and should be considered indicative and subject to change

Note: Some registered NDIS providers are yet to report on the vaccination status of their workforce. The NDIS Commission is working with those providers around reporting requirements.

Remaining workers not included include those exempt from vaccination requirements, workers whose vaccination status is not yet verified by the provider (such as workers on leave) and provider reporting anomalies.

Residential aged care vaccination rollout

Data as at:
10 Feb 2022

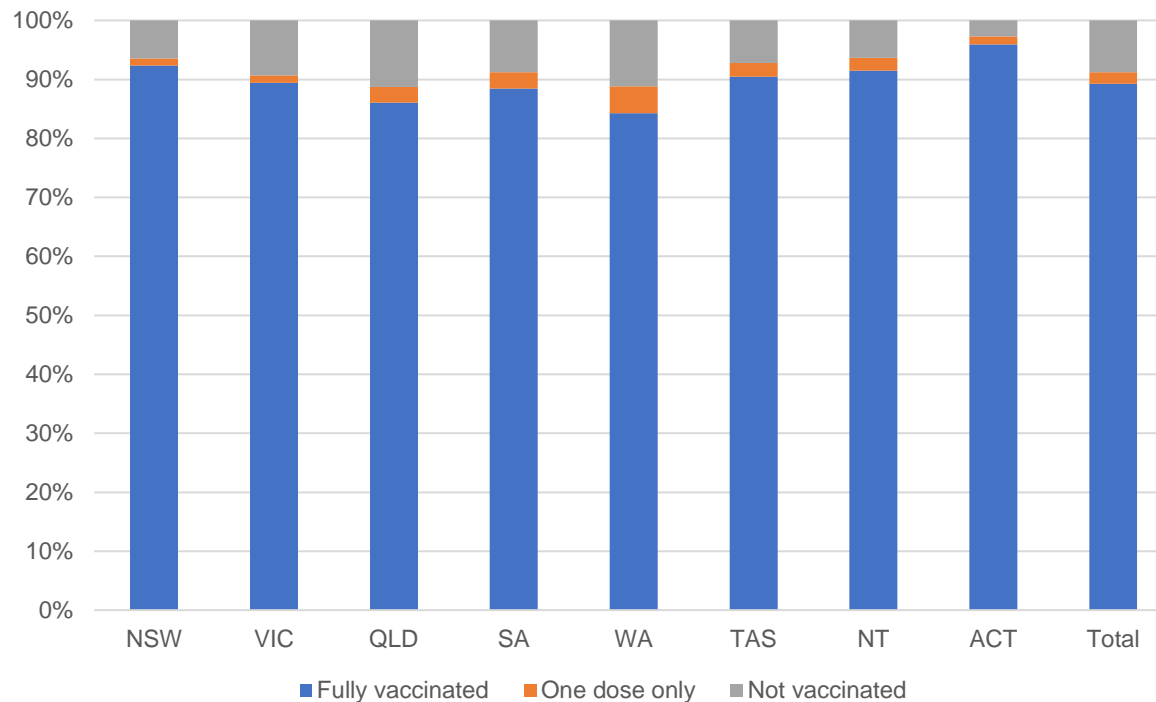
Residential aged care facilities status

100%
Commonwealth facilities visited (2,541 planned sites)

169,947
People fully vaccinated

173,709
People with at least one dose

Aged care resident vaccinations



Aged care worker vaccinations

Jurisdictions	Total workers with at least one dose	Workers fully vaccinated	% Workers with at least one dose	% Workers fully vaccinated
NSW	78,699	78,660	99.1%	99.0%
VIC	69,784	69,783	98.6%	98.6%
QLD	49,068	49,054	99.3%	99.3%
SA	27,045	27,014	98.7%	98.5%
WA	23,792	23,770	98.9%	98.9%
TAS	7,649	7,649	100.0%	100.0%
NT	881	881	100.0%	100.0%
ACT	3,023	3,023	100.0%	100.0%
Total	259,941	259,834	99.0%	98.9%

Source: My Aged Care Portal vaccination progress

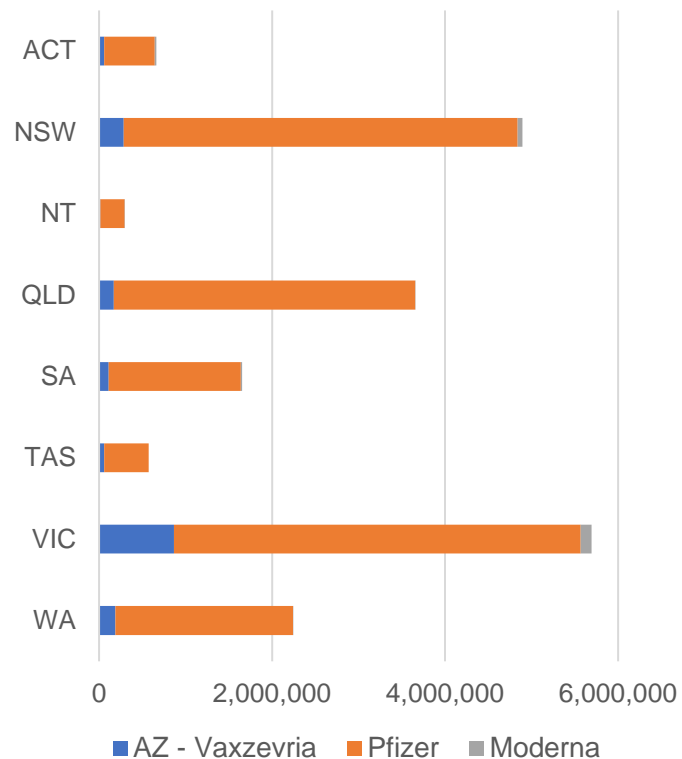
*Status updates are provided by facilities at least once per week. Reporting is updated Monday to Friday to encompass different facility updates being made on different days.

Data is sourced directly from Aged Care Service Providers and is not drawn or closely aligned with data from AIR due to inconsistencies and potential lags in uploading of records.

Data as at:
11 Feb 2022

Jurisdiction administered

Total vaccine doses administered in State and Territory clinics as at 11 February



19,670,278 total vaccine doses administered
in State and Territory clinics as at 11 February
+ **44,104** recorded in the last 24 hours
+ **306,587** recorded in the last 7 days

NSW
4,896,805
(+5,657 daily
increase)

VIC
5,694,509
(+14,934 daily
increase)

QLD
3,653,653
(+5,453 daily
increase)

WA
2,242,511
(+8,585 daily
increase)

TAS
571,314
(+1,106 daily
increase)

SA
1,653,031
(+4,282 daily
increase)

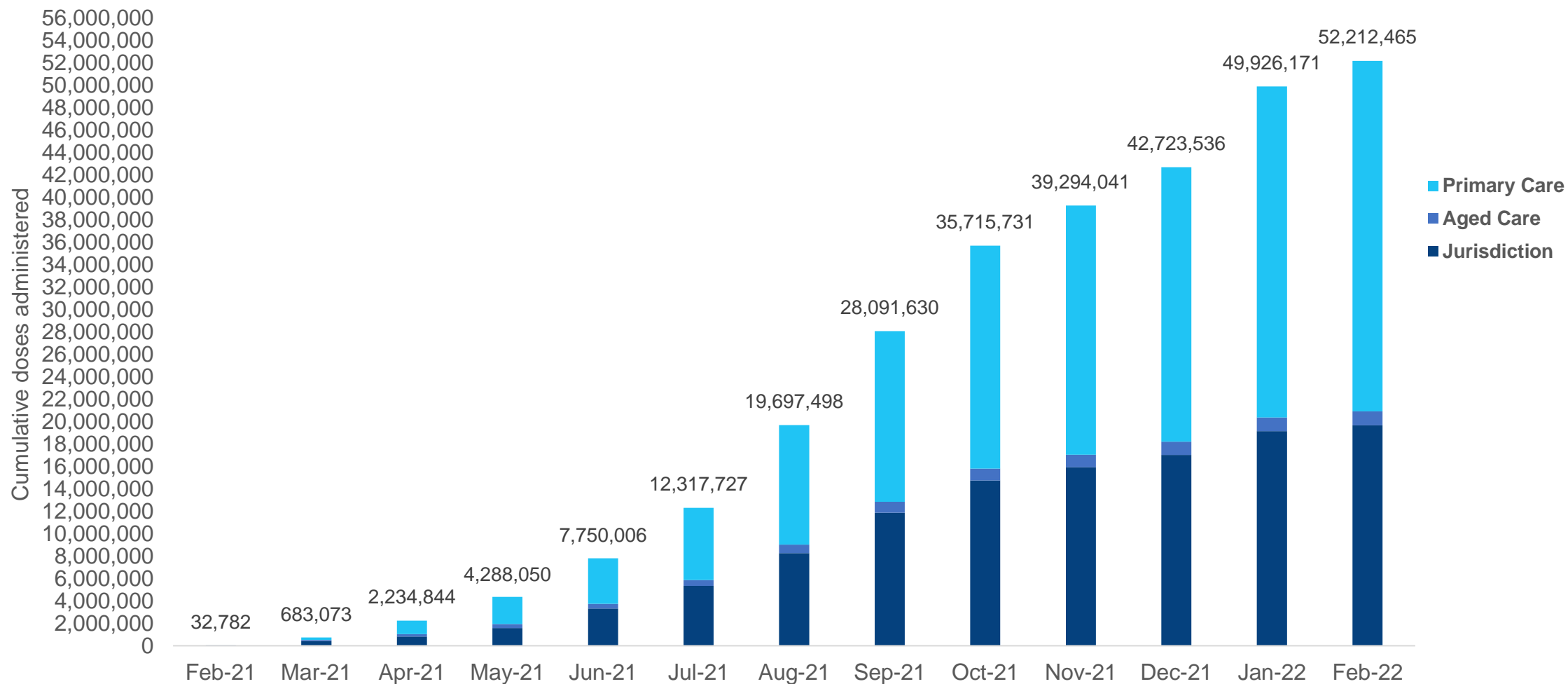
ACT
662,966
(+2,935 daily
increase)

NT
295,489
(+1,152 daily
increase)

*Sourced from the Australian Immunisation Register. Numbers are calculated as difference in daily cumulative reported numbers to allow for historical corrections.

Cumulative doses administered by channel

Data as at:
11 Feb 2022



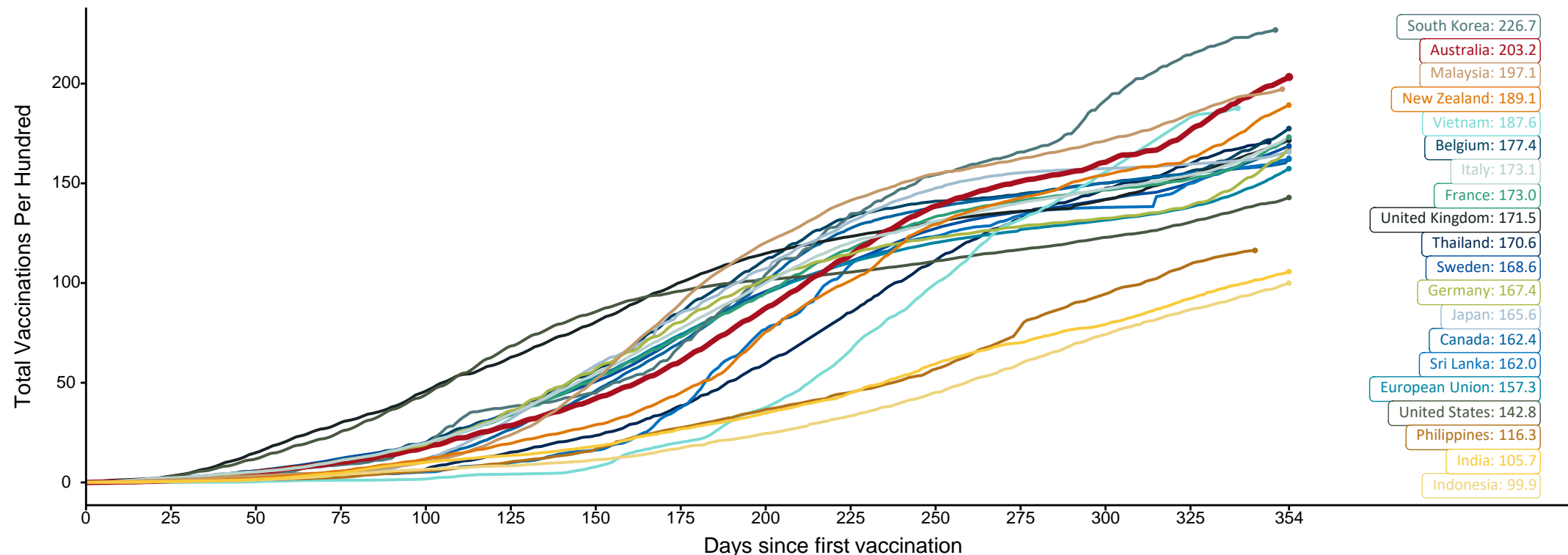
Source: Australian Immunisation Register

Doses at equivalent stages of rollout (Day 354)

Data as at:
11 Feb 2022

The x-axis is truncated at the length of Australia's vaccination program. Countries with intermittent reporting have had their doses per 100 imputed to Australia's current stage of rollout. Israel excluded as it is beyond scale of the graph

Cumulative doses administered (11 Feb): **52,212,465**

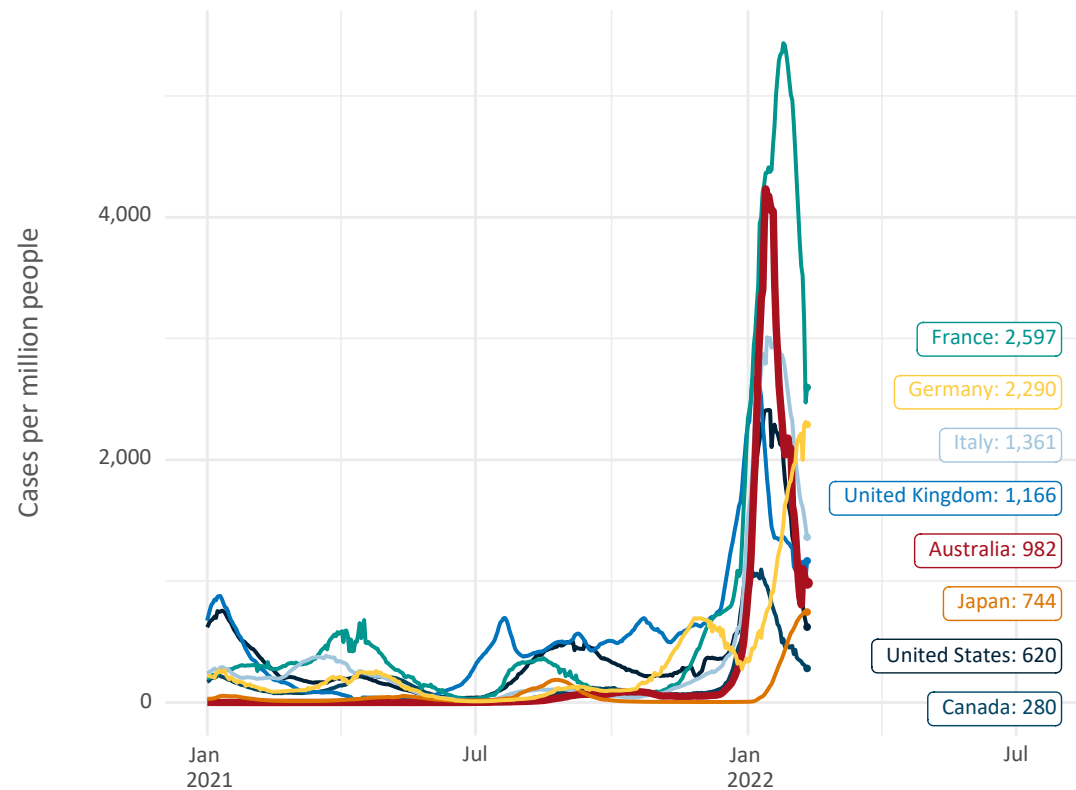


Note: From 15 September 2021, data for Australia includes all doses administered to people 12 and over. Prior to 15 September, data was for 16 and over
Due to data revisions, Singapore has been removed from the chart
Source: Department of Health (Australia), Our World in Data (international)
Latest data: 11 February

Data as at:
11 Feb 2022

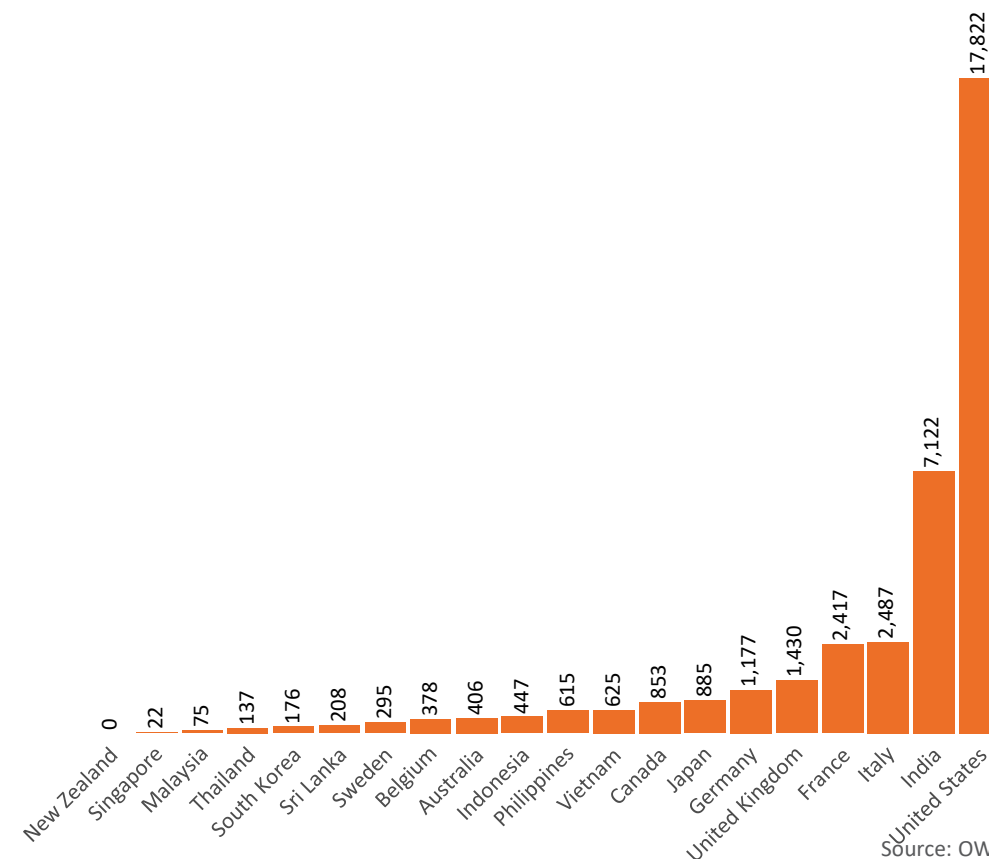
International data – COVID-19

New daily cases per million in 2021, Australia and G7 countries
Smoothed - 7 day average



Source: OWID
Data downloaded: 12 Feb 2022 07:27
Latest data: 10 Feb 2022

COVID-19 deaths in past 7 days - Australia and select countries

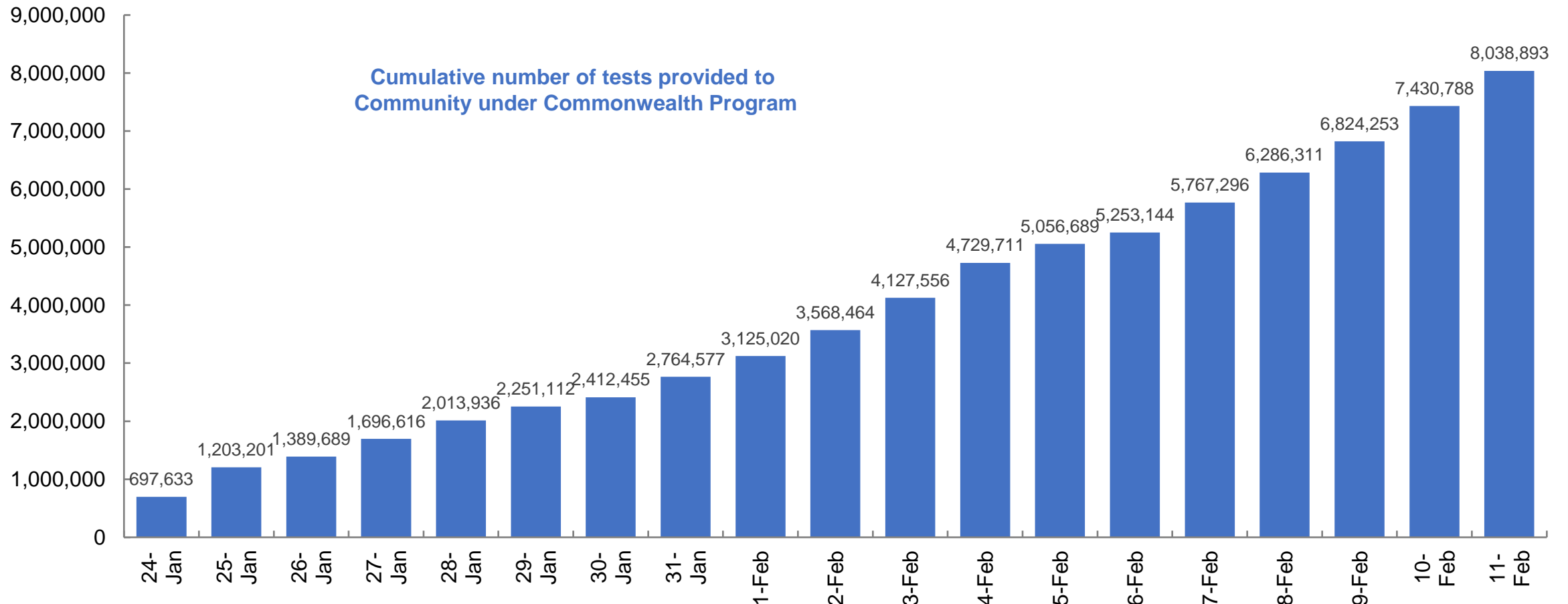


Source: OWID
Data downloaded: 12 Feb 2022 07:27
Latest data: 10 Feb 2022

Data as at:
11 Feb 2022

Concessional rapid antigen test program

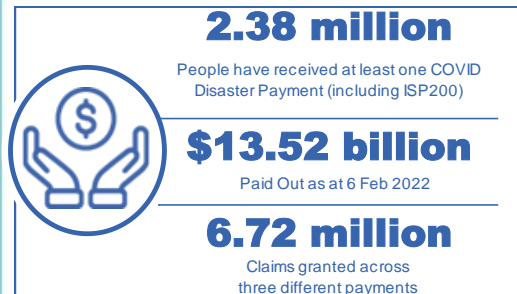
5,120 pharmacies have delivered over **8 million rapid antigen tests** to **more than 1.7 Million eligible concession card holders (to 10 Feb)** under the Government's concessional rapid antigen test program.



Pandemic Response Payments

Australia's COVID-19
Vaccine Roadmap

Data as at midnight:
6 Feb 2022
Updated weekly



COVID Disaster Payment:	5.89 million claims received - 2.19 million individuals paid a total of \$12.59 billion.
\$200 Income Support Payment:	353,000 claims received - 183,000 individuals paid a total of \$268.9 million.
Pandemic Leave Disaster Payment:	850,000 claims received - 619,000 individuals paid a total of \$661.1 million.



COVID Disaster Payment

assisting during a lockdown event in a Commonwealth hotspot.

Income Support Payment \$200

for income support recipients who lost at least 8 hours of work.

Pandemic Leave Disaster Payment

for those who have to self-isolate, quarantine or care.

For more information visit:
servicesaustralia.gov.au

COVID-19 DISASTER PAYMENTS

Northern Territory

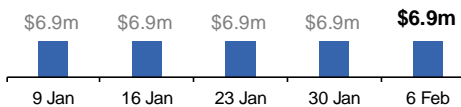
Lockdown (#3) from 16 Nov to 22 Nov
Claiming period ended 27 Dec

7,500 people have received at least one COVID Disaster Payment.

\$6.9m paid out as at 6 Feb 2022.

\$0 paid in initial payments in the week ending 6 Feb 2022.

Cumulative payments made by Territory since activation on 25 Aug 2021.



Victoria

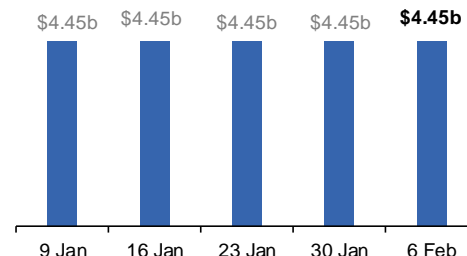
Lockdown (#6) from 6 Aug to 28 Oct
Claiming period ended 9 Dec

745,000 people have received at least one COVID Disaster Payment.

\$4.45b paid out as at 6 Feb 2022.

\$7,000 paid in initial and reoccurring payments in the week ending 6 Feb 2022.

Cumulative payments made by State since activation on 8 Jun 2021.



New South Wales

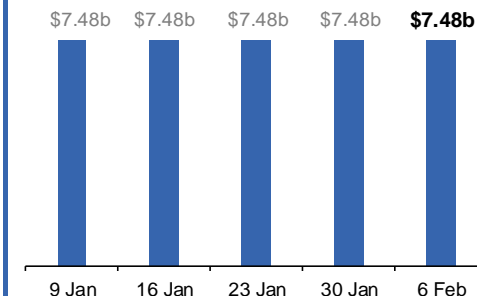
Lockdown from 24 Jun to 10 Oct
Claiming period ended 27 Nov

1.08m people have received at least one COVID Disaster Payment.

\$7.48b paid out as at 6 Feb 2022.

\$4,000 paid in initial and reoccurring payments in the week ending 6 Feb 2022.

Cumulative payments made by State since activation on 1 Jul 2021.



Australian Capital Territory

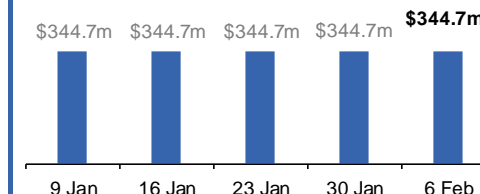
Lockdown from 12 Aug to 14 Oct
Claiming period ended 25 Nov

65,000 people have received at least one COVID Disaster Payment.

\$344.7m paid out as at 6 Feb 2022.

\$1,000 paid in initial and reoccurring payments in the week ending 6 Feb 2022.

Cumulative payments made by Territory since activation on 20 Aug 2021.



Pandemic Response Payments (continued)

Data as at midnight:
6 Feb 2022
Updated weekly

COVID-19 DISASTER PAYMENTS

Tasmania

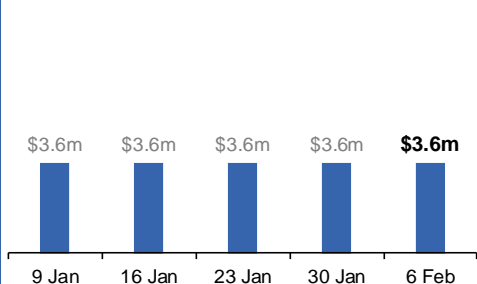
Lockdown from 15 Oct to 18 Oct
Claiming period ended 12 Nov

6,900 people have received at least one COVID Disaster Payment.

\$3.6m paid out as at 6 Feb 2022.

\$0 paid in initial and reoccurring payments in the week ending 6 Feb 2022.

Cumulative payments made by State since activation on 22 Oct 2021.



Queensland

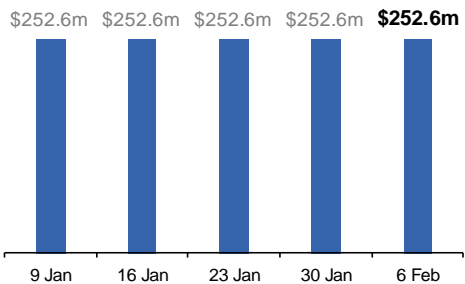
Lockdown from 31 Jul to 11 Aug
Claiming period ended 28 Aug

196,000 people have received at least one COVID Disaster Payment.

\$252.6m paid out as at 6 Feb 2022.

\$0 paid in initial and reoccurring payments in the week ending 6 Feb 2022.

Cumulative payments made by State since activation on 7 Aug 2021.



South Australia

Lockdown from 21 to 27 Jul
Claiming period ended 17 Aug

86,000 people have received at least one COVID Disaster Payment.

\$48.2m paid out as at 6 Feb 2022.

\$0 paid in initial and reoccurring payments in the week ending 6 Feb 2022.

Cumulative payments made by State since activation on 28 Jul 2021.

