



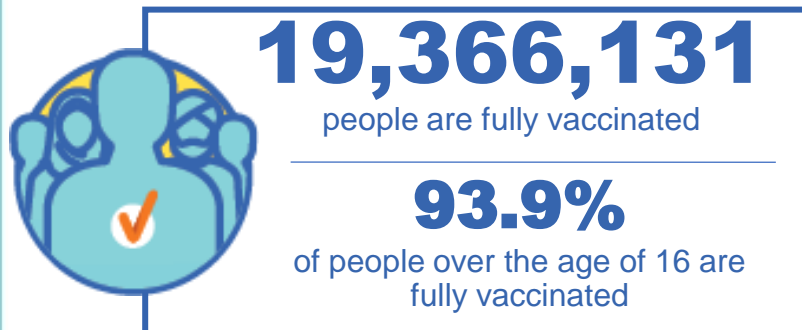
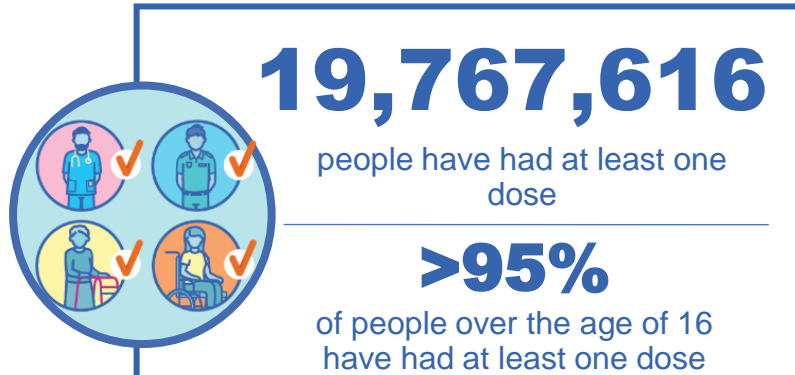
**Australian Government**  
**Operation COVID Shield**

# COVID-19 Vaccine Rollout

11 February 2022

Data as at:  
10 Feb 2022

## Total vaccine doses



**52,008,496** total vaccine  
doses administered nationally as at 10 February

**+202,530** recorded in the last 24 hours



\*Administration state breakdown indicates state in which a vaccine was administered

\*\*Overall dose count includes instances of more than two doses per person in a small number of cases.

Source: Australian Immunisation Register

# Booster Vaccinations

Australia's COVID-19  
Vaccine Roadmap

Data as at:  
10 Feb 2022



**9,727,513** total people over the age of 16 years old  
who have received more than two doses nationally

**+173,062** people who have received more than two doses  
nationally in the last 24 hours

**NSW**  
**3,102,923**  
(49,767 daily  
increase)

**VIC**  
**2,624,633**  
(51,691 daily  
increase)

**QLD**  
**1,731,257**  
(27,649 daily  
increase)

**WA**  
**1,017,632**  
(23,466 daily  
increase)

**TAS**  
**210,354**  
(4,217 daily  
increase)

**SA**  
**692,562**  
(10,645 daily  
increase)

**ACT**  
**207,155**  
(2,968 daily  
increase)

**NT**  
**76,660**  
(999 daily  
increase)

**64,337**

doses administered to persons  
residing in other territories or with  
missing residential information

Source: Australian Immunisation Register

# Vaccinations by residential location

Australia's COVID-19 Vaccine Roadmap

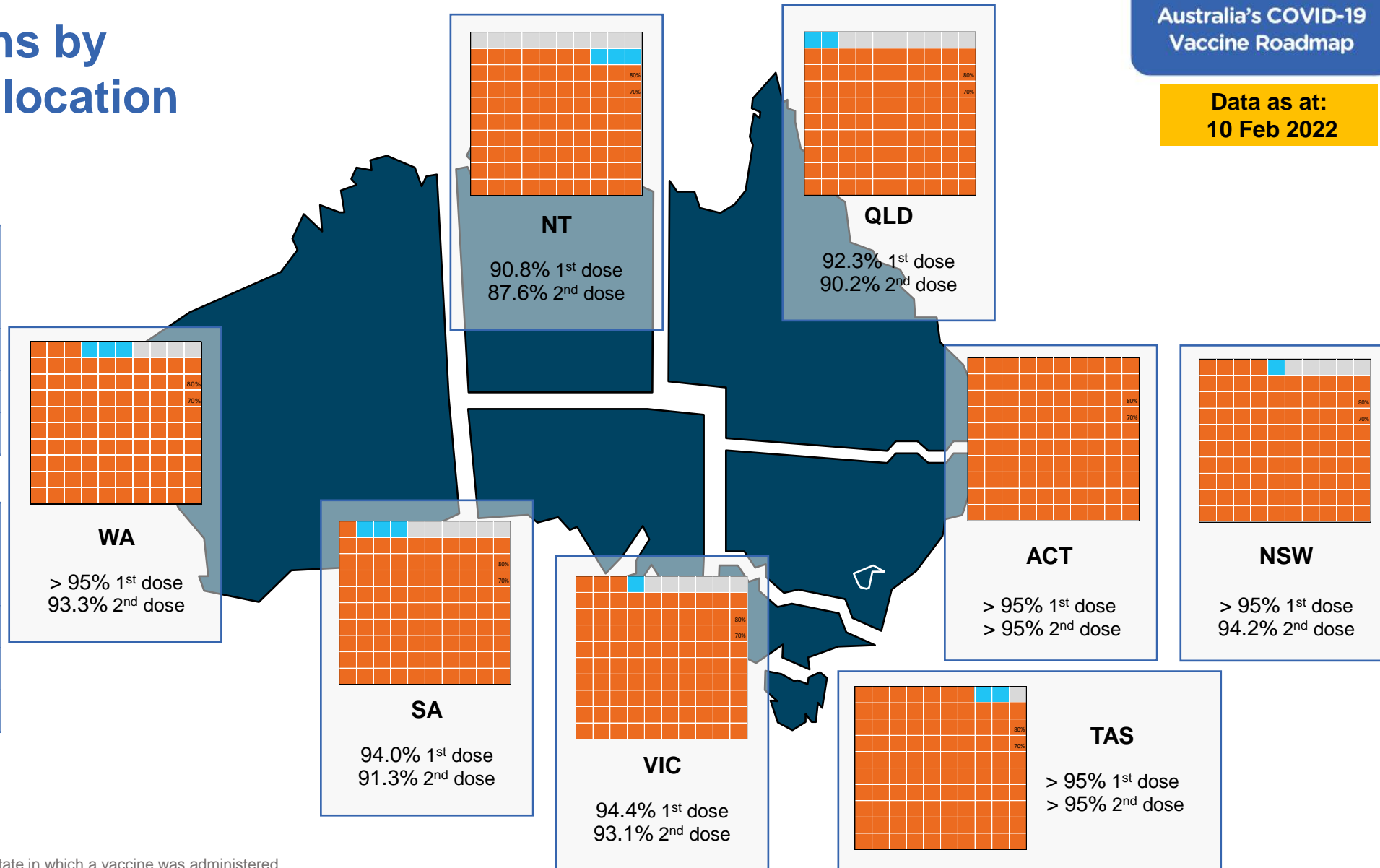
Data as at:  
10 Feb 2022

## First doses

Age	Today	4 weeks ago	8 weeks ago
16+	>95%	>95%	94.1%
50+	>95%	>95%	>95%
70+	>95%	>95%	>95%

## Fully vaccinated

Age	Today	4 weeks ago	8 weeks ago
16+	93.9%	92.7%	90.6%
50+	>95%	>95%	>95%
70+	>95%	>95%	>95%



\*Residential state may differ from the state in which a vaccine was administered

# Commonwealth and Jurisdiction vaccine doses administered

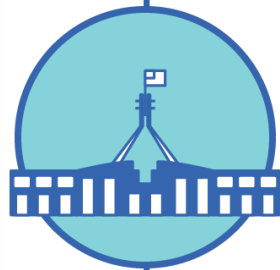
Data as at:  
10 Feb 2022



**52,008,496** total vaccine  
doses administered nationally as at 10 February  
**+ 202,530** recorded in the last 24 hours



**19,626,174**  
doses administered by state  
and territory facilities  
**+ 42,829**  
recorded in the last 24 hours



**32,382,322**  
doses administered by  
commonwealth facilities  
**+ 159,701**  
recorded in the last 24 hours

**31,140,938** total vaccine doses  
administered in primary care settings  
**1,241,384** total vaccine doses  
administered in aged care and disability  
settings

NSW	Jurisdictions	Commonwealth
Cumulative	4,891,148	11,496,641
Daily increase	6,411	48,408

VIC	Jurisdictions	Commonwealth
Cumulative	5,679,575	8,056,561
Daily increase	14,621	42,646

QLD	Jurisdictions	Commonwealth
Cumulative	3,648,200	6,316,817
Daily increase	4,292	28,997

WA	Jurisdictions	Commonwealth
Cumulative	2,233,926	3,164,975
Daily increase	8,398	23,758

TAS	Jurisdictions	Commonwealth
Cumulative	570,208	580,139
Daily increase	1,503	3,635

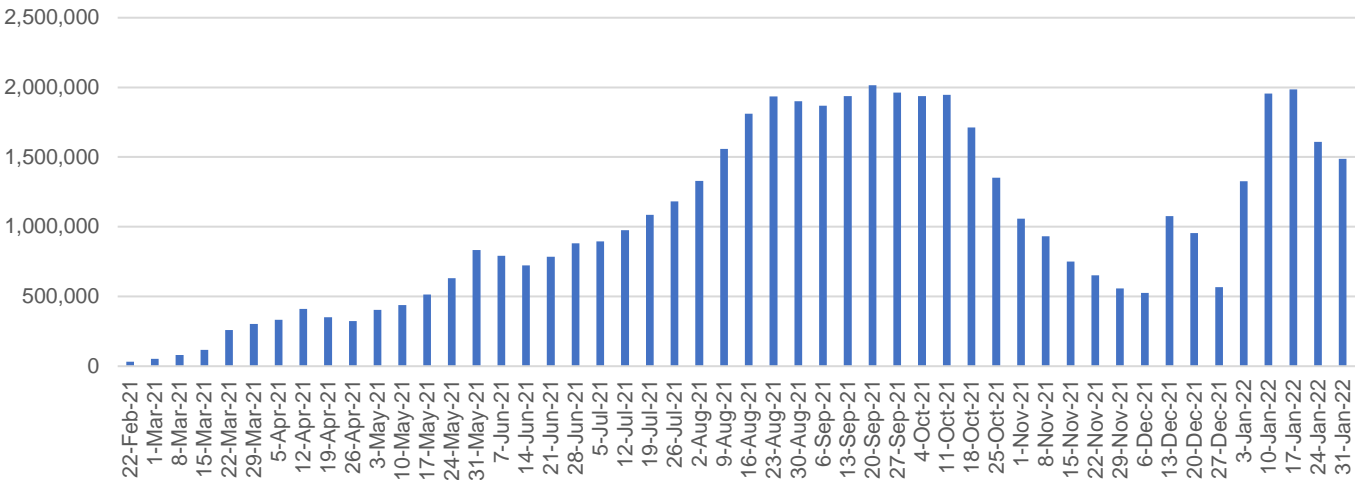
SA	Jurisdictions	Commonwealth
Cumulative	1,648,749	1,918,904
Daily increase	4,133	9,017

ACT	Jurisdictions	Commonwealth
Cumulative	660,031	639,528
Daily increase	2,798	2,408

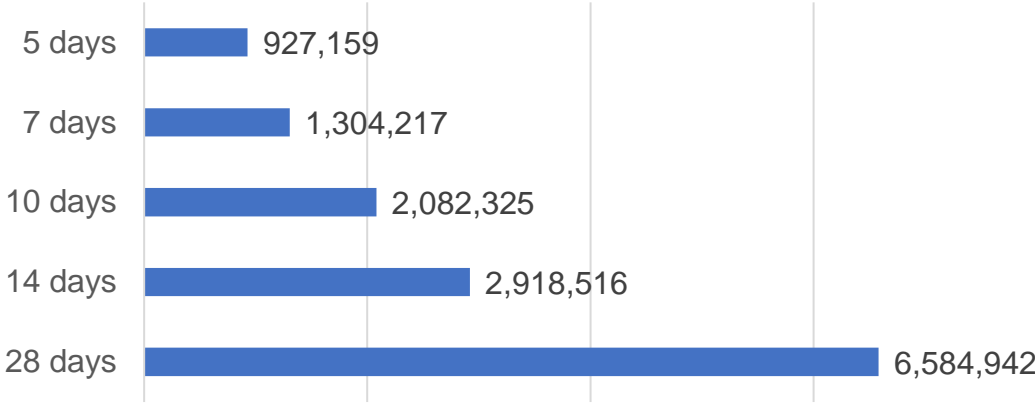
NT	Jurisdictions	Commonwealth
Cumulative	294,337	208,757
Daily increase	673	832

# Vaccine milestone charts

Doses Administered by Week



Doses Reported

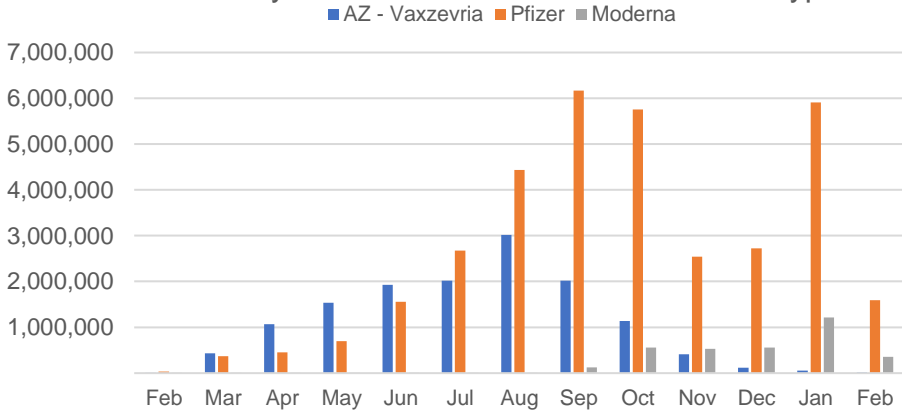


\*Sourced from the Australian Immunisation Register.

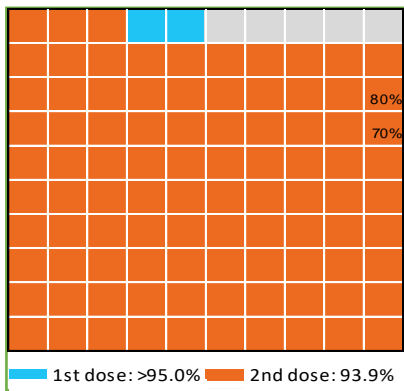
Data as at:  
10 Feb 2022

Australia's COVID-19  
Vaccine Roadmap

Doses by administration month and vaccine type



Eligible population percentage coverage



\*Each square represents 1% of the national population.  
Squares are filled as milestones are achieved.

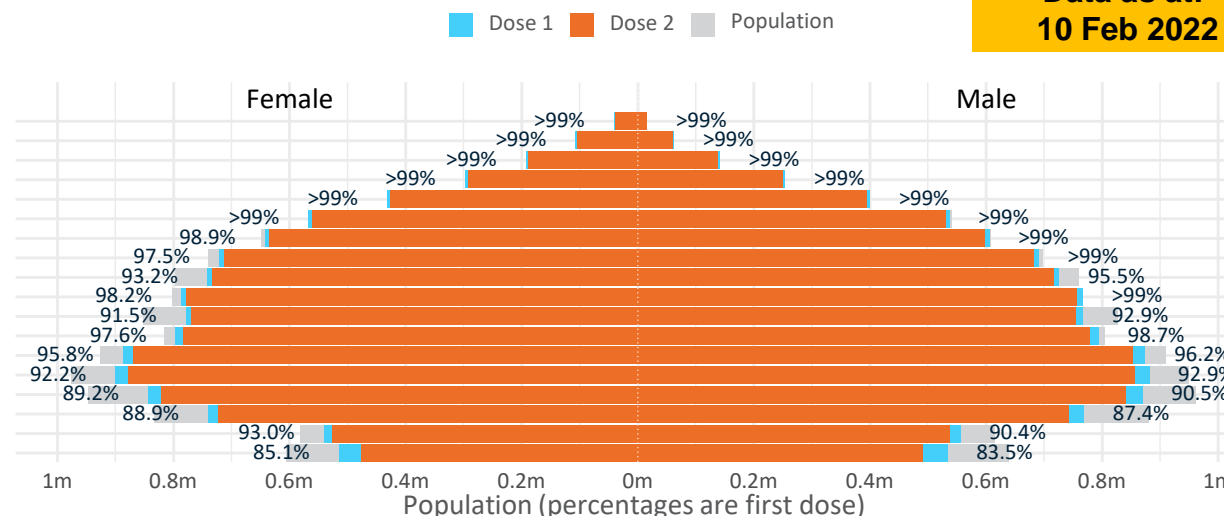
# Doses by age and sex

First and second doses by age and sex

Australia's COVID-19  
Vaccine Roadmap

Data as at:  
10 Feb 2022

Age	Dose 1	Dose 2
95+	57,430 (>99%)	53,802 (>99%)
90-94	170,220 (>99%)	163,711 (>99%)
85-89	334,177 (>99%)	325,618 (>99%)
80-84	551,632 (>99%)	542,362 (>99%)
75-79	831,957 (>99%)	821,543 (>99%)
70-74	1,105,077 (>99%)	1,092,023 (98.8%)
65-69	1,249,397 (>99%)	1,233,290 (98.0%)
60-64	1,413,838 (98.4%)	1,395,209 (97.1%)
55-59	1,468,935 (94.4%)	1,449,541 (93.2%)
50-54	1,555,136 (>99%)	1,534,011 (98.0%)
45-49	1,547,171 (92.3%)	1,523,271 (90.8%)
40-44	1,592,848 (98.3%)	1,562,965 (96.5%)
35-39	1,766,054 (96.2%)	1,726,928 (94.1%)
30-34	1,788,647 (93.0%)	1,739,443 (90.4%)
25-29	1,723,338 (90.4%)	1,669,379 (87.6%)
20-24	1,514,736 (88.5%)	1,469,227 (85.8%)
16-19	1,097,023 (91.7%)	1,063,808 (89.0%)
12-15	1,048,507 (84.3%)	966,555 (77.7%)

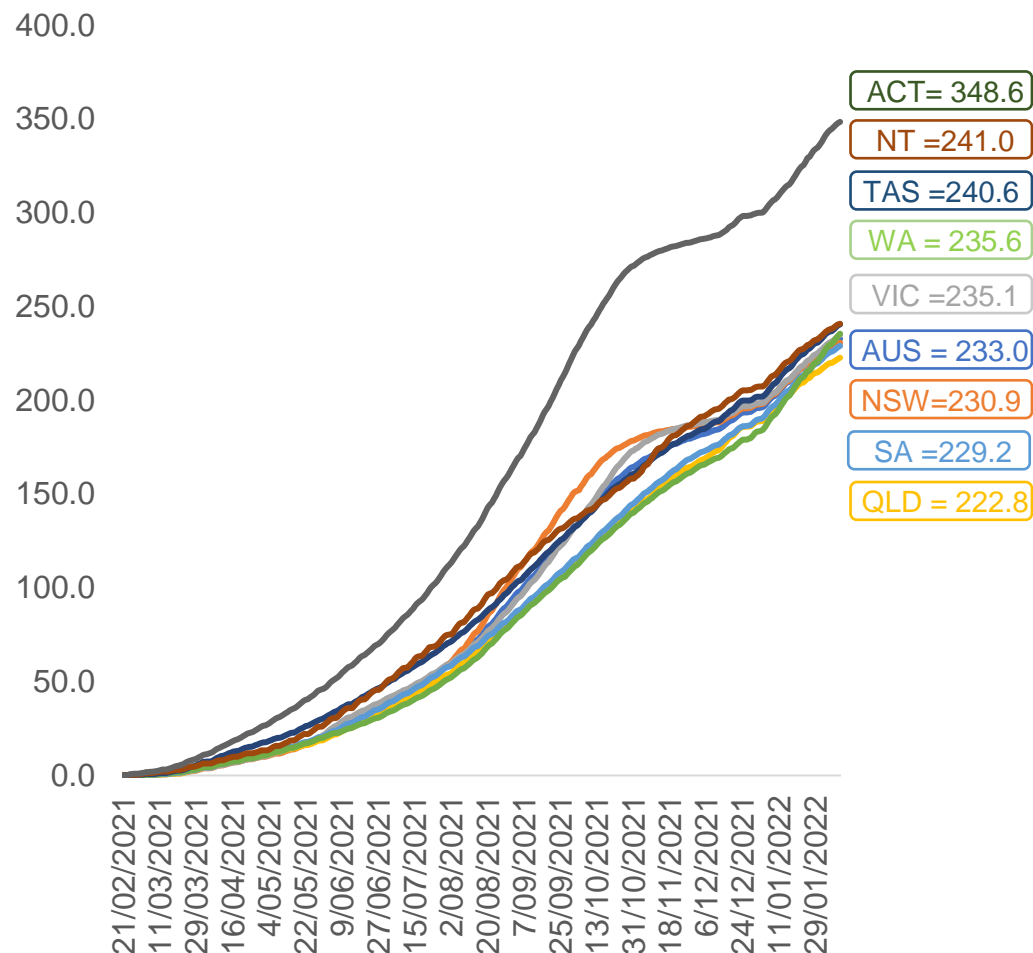


	AUS	ACT	NSW	NT	QLD	SA	TAS	VIC	WA
16 and over - dose 1	19,767,616	349,672	6,274,530	172,976	3,796,604	1,354,243	439,118	5,107,274	2,044,590
16 and over - dose 2	19,366,131	344,604	6,181,966	167,030	3,710,420	1,315,362	427,111	5,035,632	1,973,865
16 and over - population	20,619,959*	344,037	6,565,651	190,571	4,112,707	1,440,400	440,172	5,407,574	2,114,978
16 and over % with dose 1	95.87%	>99%	95.57%	90.77%	92.31%	94.02%	>99%	94.45%	96.67%
16 and over % with dose 2	93.92%	>99%	94.16%	87.65%	90.22%	91.32%	97.03%	93.12%	93.33%
5 to 11 - dose 1	1,064,671	29,775	321,556	11,541	194,618	76,155	26,955	296,303	101,386
5 to 11 - dose 2	7,291	138	3,043	67	1,308	200	37	2,208	249
5 to 11 - population	2,276,638	39,789	716,460	24,750	478,731	148,816	45,033	578,499	244,154
5 to 11 % with dose 1	46.77%	74.83%	44.88%	46.63%	40.65%	51.17%	59.86%	51.22%	41.53%
5 to 11 % with dose 2	0.32%	0.35%	0.42%	0.27%	0.27%	0.13%	0.08%	0.38%	0.10%
12 to 15 - dose 1	1,048,507	20,040	326,013	10,829	207,007	67,754	22,705	275,699	109,086
12 to 15 - dose 2	966,555	19,176	307,621	9,494	187,459	61,654	20,609	261,022	91,624
12 to 15 - population	1,243,990	19,693	390,330	13,060	270,146	82,747	26,308	308,611	132,869
12 to 15 % with dose 1	84.29%	>99%	83.52%	82.92%	76.63%	81.88%	86.30%	89.34%	82.10%
12 to 15 % with dose 2	77.70%	97.37%	78.81%	72.70%	69.39%	74.51%	78.34%	84.58%	68.96%

\*National population will not equal sum of listed jurisdictions due to a small number of people counted in national population residing in some 'other' territories. Sum of state doses will not add to national total as some records are unable to be geocoded to a State or Territory.  
Doses sourced from Australian Immunisation Register, population from ABS ERP June 2020

# Vaccinations by location

Cumulative total doses administered vs eligible state populations\*

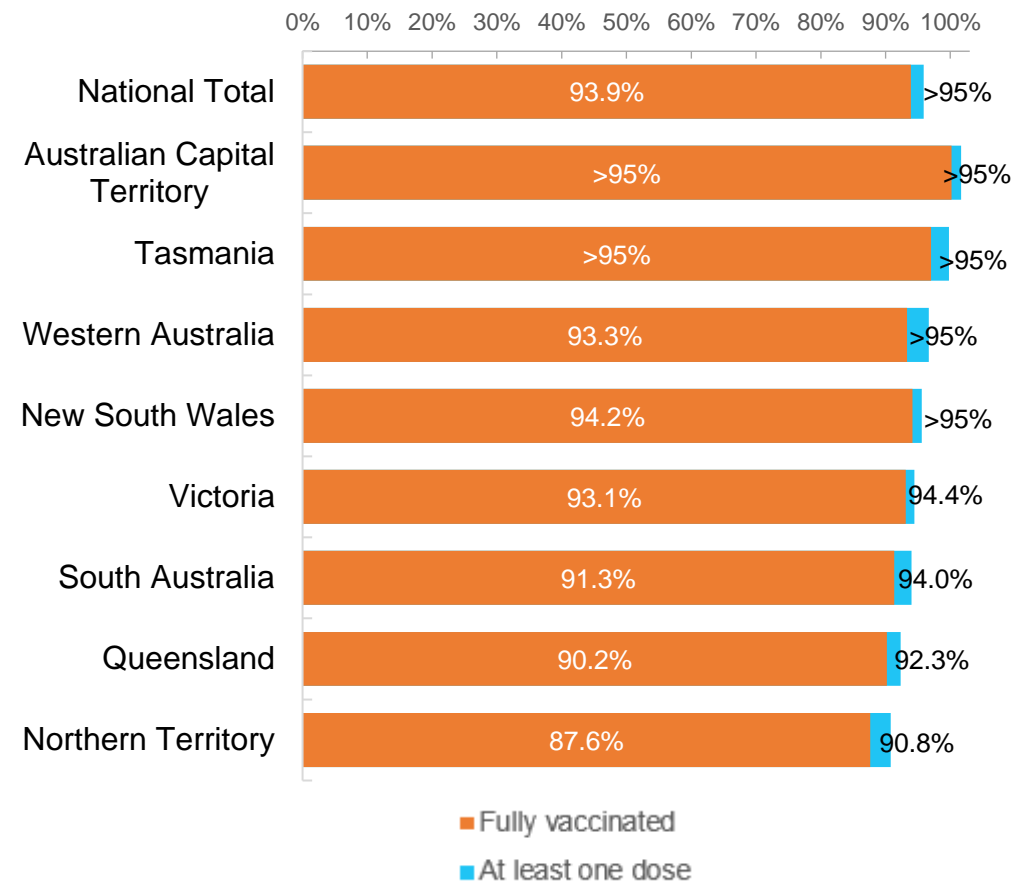


\*Not an indication of percentage vaccinated, numbers will exceed 100 due to multiple doses required per person of the population. All doses are included for those aged 12 and above, and are based on vaccination provider location.

Data as at:  
10 Feb 2022

Australia's COVID-19  
Vaccine Roadmap

First and Second Doses by residential location





# Aboriginal and Torres Strait Islander peoples

## Number of people vaccinated

Data as at:  
08 Feb 2022  
Updated weekly

Australia's COVID-19  
Vaccine Roadmap



**428,426**

people over the age of 16  
have had at least one dose

**82.3%**

of people over the age of 16  
have had at least one dose



**398,952**

people over the age of 16  
are fully vaccinated

**76.6%**

of people over the age of 16 are  
fully vaccinated



**46,782  
(65.9%)**

people aged 12-15 years  
have had at least one dose

### 175 Aboriginal community controlled health services (ACCHS)

0#	50	27	43	12	3	21	19
ACT	NSW	NT	QLD	SA	TAS	VIC	WA

Medicare Address State <sup>##</sup>	Individuals Dose 1	Individuals Dose 1 %	Individuals Dose 2	Individuals Dose 2 %
Australian Capital Territory	4,870	91.1%	4,736	88.6%
New South Wales	135,151	86.4%	131,547	84.1%
Northern Territory	41,456	87.8%	38,065	80.6%
Queensland	112,908	79.6%	104,458	73.6%
South Australia	19,428	77.7%	17,458	69.8%
Tasmania	14,252	87.6%	13,572	83.4%
Victoria	35,192	89.1%	34,228	86.6%
Western Australia	49,049	77.8%	41,228	65.4%
Unknown/Other Territories	16,120	62.2%	13,660	52.7%
<b>Totals</b>	<b>428,426</b>	<b>82.3%</b>	<b>398,952</b>	<b>76.6%</b>

Source: Australian Immunisation Register

\*Identifying as Aboriginal and Torres Strait Islander is optional and the estimated population may be under reported.

\*\*Includes all Aboriginal and Torres Strait Islander peoples who have received a vaccination, not limited to those administered in an ACCHS setting

#ACCHS in the ACT are currently operating as a Commonwealth Vaccine Clinics so not included to avoid double counting

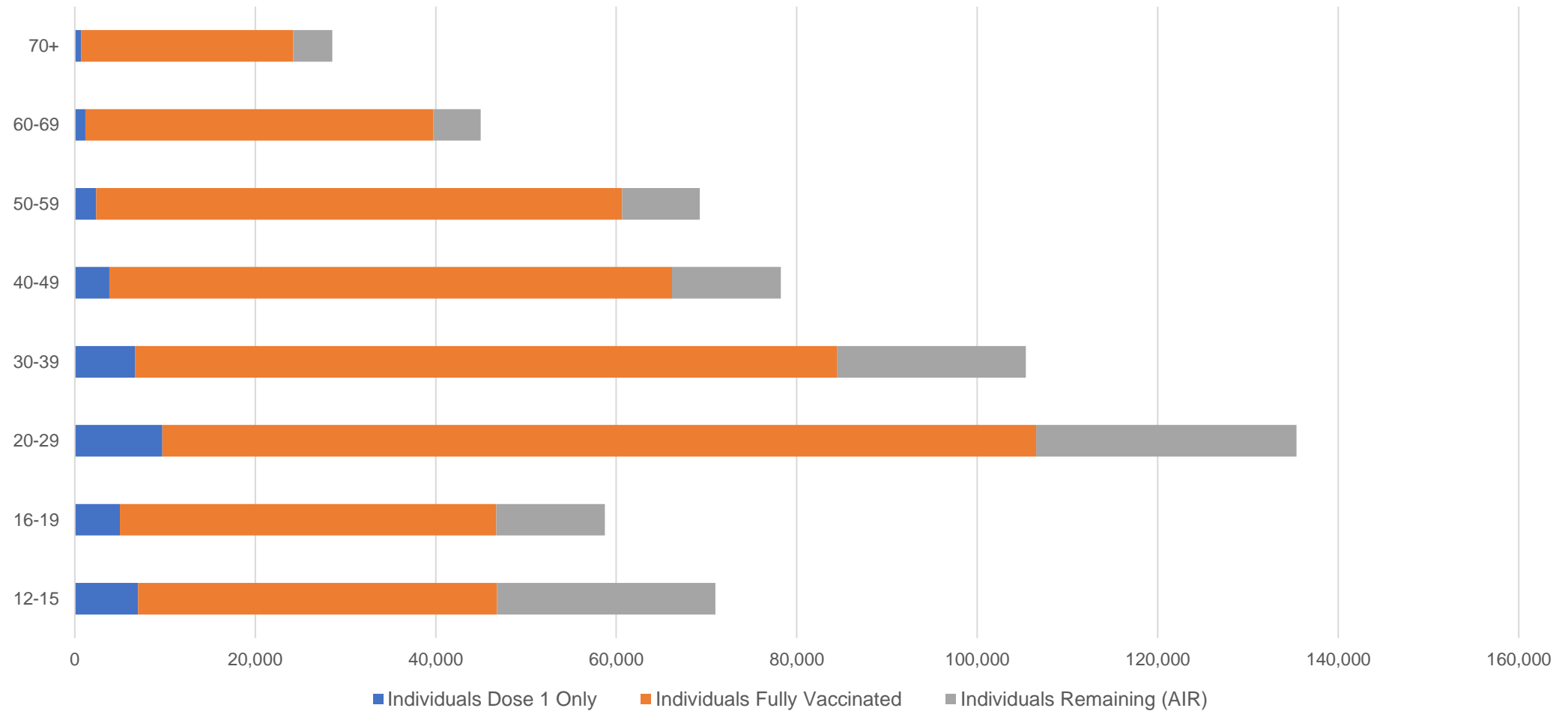
##The above table includes all identified Aboriginal and Torres Strait Islander people who are aged 16 and above by their state of residence.

# Aboriginal and Torres Strait Islander peoples

## Number of people vaccinated by age

Data as at:  
08 Feb 2022  
Updated weekly

Australia's COVID-19  
Vaccine Roadmap



Source: Australian Immunisation Register

# Commonwealth primary care

Data as at:  
10 Feb 2022

Australia's COVID-19  
Vaccine Roadmap



## Primary care vaccine administration sites

<b>5,745</b>	<b>128</b>	<b>174</b>	<b>3,537</b>
GPs	CVCs	ACCHS	Pharmacies



**31,140,938** total vaccine doses administered  
primary care settings as at 10 February  
**+ 158,496** recorded in the last 24 hours

## Primary care vaccinations by provider type

	Doses administered	Daily increase	7 day increase
General Practice* includes other Commonwealth	25,715,896	105,877	660,452
Pharmacy	5,425,042	52,619	319,603

**NSW**  
**10,962,381**  
(+47,832 daily increase)

**VIC**  
**7,759,560**  
(+41,492 daily increase)

**QLD**  
**6,043,928**  
(+28,600 daily increase)

**WA**  
**3,046,560**  
(+23,487 daily increase)

**TAS**  
**561,955**  
(+3,507 daily increase)

**SA**  
**1,842,823**  
(+8,817 daily increase)

**ACT**  
**495,661**  
(+2,234 daily increase)

**NT**  
**188,089**  
(+735 daily increase)

**239,981**

doses administered to persons  
residing in other territories or with  
missing residential information

\*General practice includes Commonwealth Vaccination Clinics, Aboriginal Community Health Centres, Royal Flying Doctor Service and other Commonwealth vaccination facilities

Source: Australian Immunisation Register

Data as at:  
10 Feb 2022

# Commonwealth aged care and disability doses administered



**1,241,384** (+ 1,205 last 24 hours)

Total vaccine doses administered in aged care and disability facilities as at 10 February

Number of doses administered as part of the Commonwealth aged and disability care rollout

**NSW**  
**552,614**  
(+323 daily increase)

**VIC**  
**236,424**  
(+324 daily increase)

**QLD**  
**195,698**  
(+272 daily increase)

**WA**  
**97,356**  
(+138 daily increase)

**TAS**  
**21,996**  
(+63 daily increase)

**SA**  
**83,070**  
(+17 daily increase)

**ACT**  
**16,113**  
(+1 daily increase)

**NT**  
**7,015**  
(+3 daily increase)

**31,098**

doses administered to persons  
residing in other territories or with  
missing residential information

\*Sourced from the Australian Immunisation Register. Includes all persons vaccinated at participating residential aged care, disability and related industry settings.

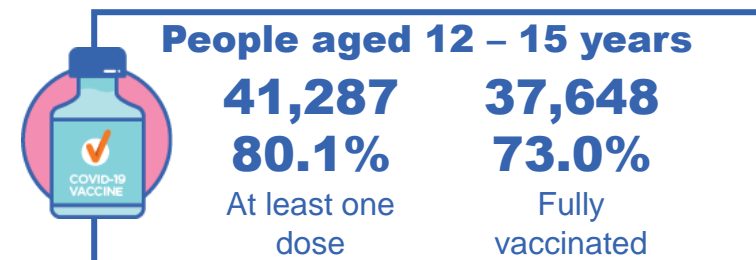
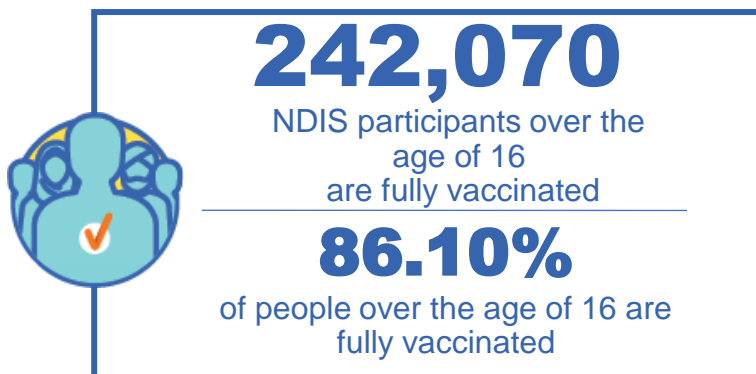
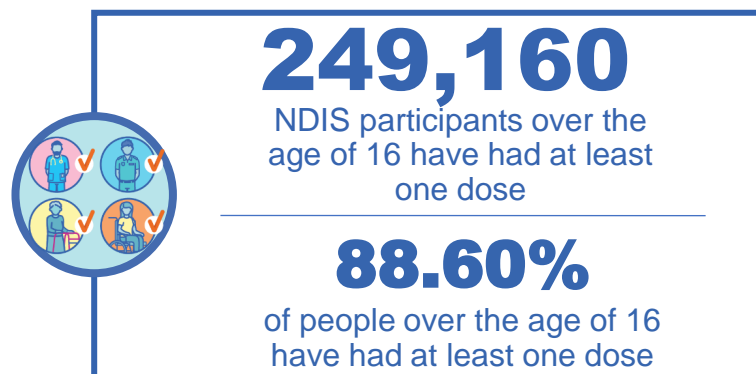
\*\*State level breakdown indicates the residential location and may not align to the state in which the vaccination occurred.

Source: Australian Immunisation Register

# National Disability Insurance Scheme (NDIS) reported vaccinations

Data as at:  
10 February 2022  
Updated weekly

Australia's COVID-19  
Vaccine Roadmap



## NDIS participant vaccinations

	People aged 16+ with at least one dose	People aged 16+ fully vaccinated	% People aged 16+ with at least one dose	% People aged 16+ fully vaccinated
ACT	4,773	4,697	90.80%	89.40%
NSW	77,357	75,976	89.10%	87.50%
NT	2,159	2,047	79.80%	75.70%
QLD	48,748	47,209	87.70%	84.90%
SA	19,860	19,373	86.20%	82.60%
TAS	6,222	5,972	88.40%	84.80%
VIC	66,592	65,256	89.80%	88.00%
WA	23,099	20,269	87.90%	82.00%
National	249,160	242,070	88.60%	86.10%

Source: Linkage between National Disability Insurance Agency data and the Australian Immunisation Register. Total NDIS participant numbers as at 17th October. Australian Immunisation Register data as at 09 February. Includes all participants regardless of residence type.

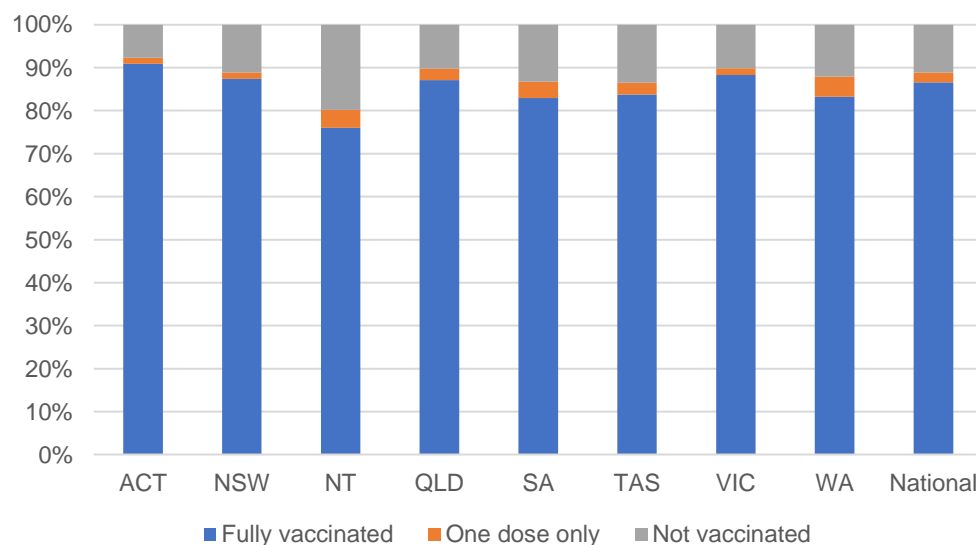
# National Disability Insurance Scheme (NDIS) reported vaccinations

Data as at:  
10 February 2022  
Updated Weekly

Australia's COVID-19  
Vaccine Roadmap

NATIONAL	Total people with at least one dose	People fully vaccinated	Total number of individuals in cohort	% People with at least one dose	% People fully vaccinated
NDIS participants living in disability accommodation	20,319	19,826	22,800	89.10%	87.00%

## NDIS participants in disability and aged care accommodation



Source: Linkage between National Disability Insurance Agency data and the Australian Immunisation Register. Includes participants residing in disability accommodation only.

Source: Total NDIS participant numbers as at 17th October. Participant data as at 08 February. Australian Immunisation Register data as at 09 February. Worker data as at 09 February.

## NDIS workforce vaccinations

	NDIS workers with at least one dose	NDIS workers fully vaccinated	% NDIS workers with at least one dose	% NDIS workers fully vaccinated
NSW	111,229	110,702	97.6%	97.2%
VIC	105,706	105,231	97.8%	97.3%
QLD	65,650	64,782	96.6%	95.3%
WA	31,968	30,550	98.2%	93.8%
SA	33,871	33,089	97.4%	95.1%
TAS	10,596	10,435	99.5%	98.0%
ACT	3,438	3,431	99.5%	99.3%
NT	3,066	3,023	99.4%	98.0%
<b>TOTAL</b>	<b>365,524</b>	<b>361,243</b>	<b>97.6%</b>	<b>96.5%</b>

Source: the NDIS Commission has established a requirement for registered NDIS providers who provide intensive disability support services to report on the vaccination status of workers they employ, or otherwise engage, to deliver NDIS-funded supports and services, and who are required to be vaccinated in accordance with in-force state and territory public health orders. The statistics reflect data reported to the NDIS Commission by registered NDIS providers and should be considered indicative and subject to change

Note: Some registered NDIS providers are yet to report on the vaccination status of their workforce. The NDIS Commission is working with those providers around reporting requirements.

Remaining workers not included include those exempt from vaccination requirements, workers whose vaccination status is not yet verified by the provider (such as workers on leave) and provider reporting anomalies.

# Residential aged care vaccination rollout

Data as at:  
10 Feb 2022

Residential aged care facilities status

100%

Commonwealth facilities visited (2,541 planned sites)

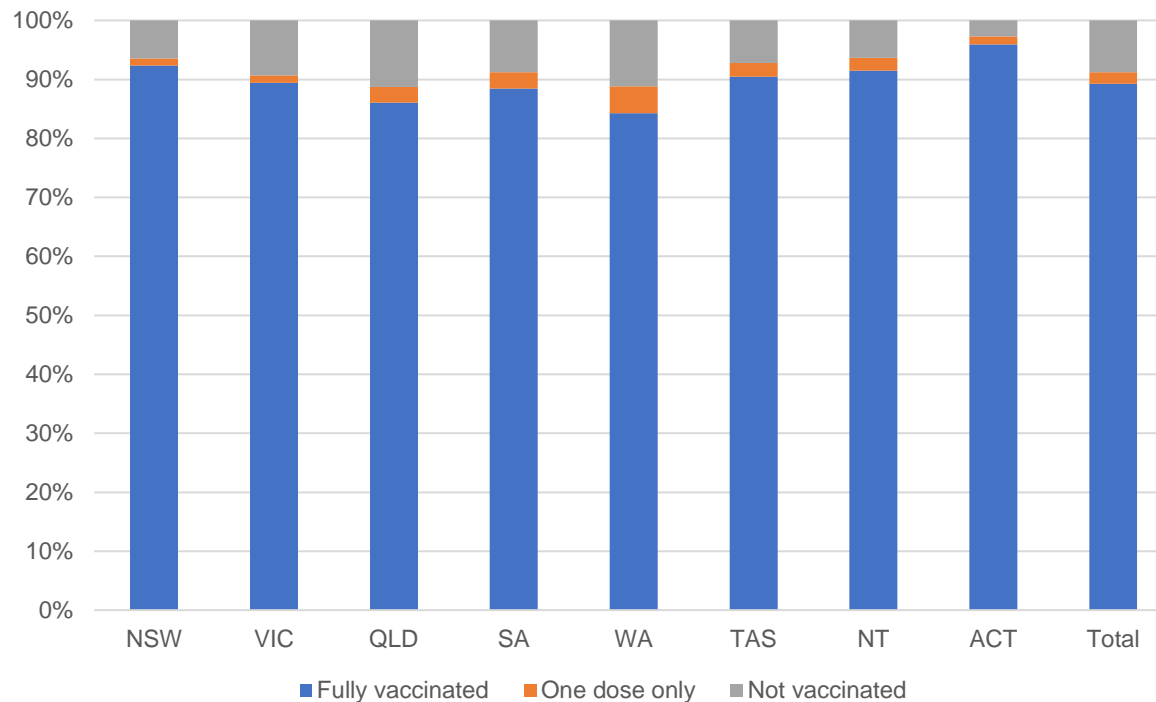
169,947

People fully vaccinated

173,709

People with at least one dose

## Aged care resident vaccinations



## Aged care worker vaccinations

Jurisdictions	Total workers with at least one dose	Workers fully vaccinated	% Workers with at least one dose	% Workers fully vaccinated
NSW	78,699	78,660	99.1%	99.0%
VIC	69,784	69,783	98.6%	98.6%
QLD	49,068	49,054	99.3%	99.3%
SA	27,045	27,014	98.7%	98.5%
WA	23,792	23,770	98.9%	98.9%
TAS	7,649	7,649	100.0%	100.0%
NT	881	881	100.0%	100.0%
ACT	3,023	3,023	100.0%	100.0%
Total	259,941	259,834	99.0%	98.9%

Source: My Aged Care Portal vaccination progress

\*Status updates are provided by facilities at least once per week. Reporting is updated Monday to Friday to encompass different facility updates being made on different days.

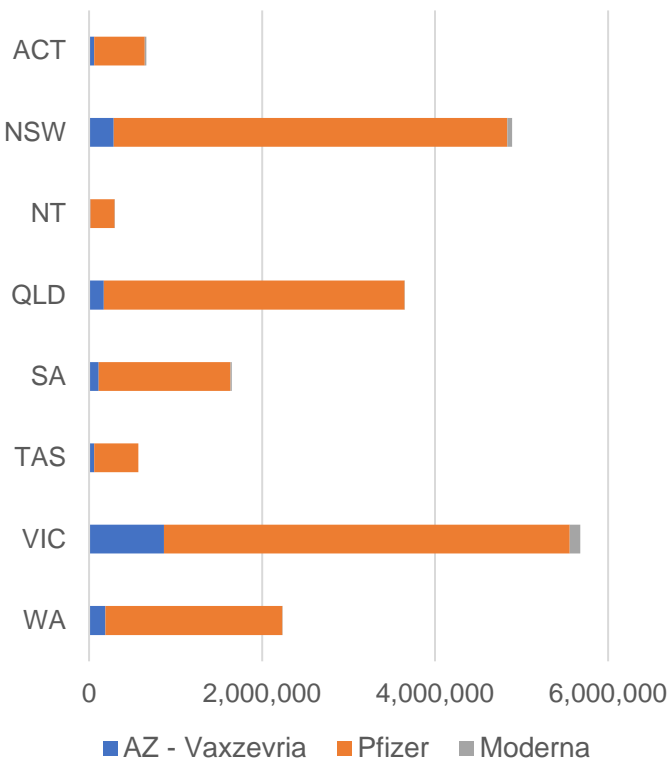
Data is sourced directly from Aged Care Service Providers and is not drawn or closely aligned with data from AIR due to inconsistencies and potential lags in uploading of records.



Data as at:  
10 Feb 2022

# Jurisdiction administered

Total vaccine doses administered in State and Territory clinics as at 10 February



**19,626,174** total vaccine doses administered  
in State and Territory clinics as at 10 February  
+ **42,829** recorded in the last 24 hours  
+ **315,006** recorded in the last 7 days

**NSW**  
**4,891,148**  
(+6,411 daily increase)

**VIC**  
**5,679,575**  
(+14,621 daily increase)

**QLD**  
**3,648,200**  
(+4,292 daily increase)

**WA**  
**2,233,926**  
(+8,398 daily increase)

**TAS**  
**570,208**  
(+1,503 daily increase)

**SA**  
**1,648,749**  
(+4,133 daily increase)

**ACT**  
**660,031**  
(+2,798 daily increase)

**NT**  
**294,337**  
(+673 daily increase)

\*Sourced from the Australian Immunisation Register. Numbers are calculated as difference in daily cumulative reported numbers to allow for historical corrections.

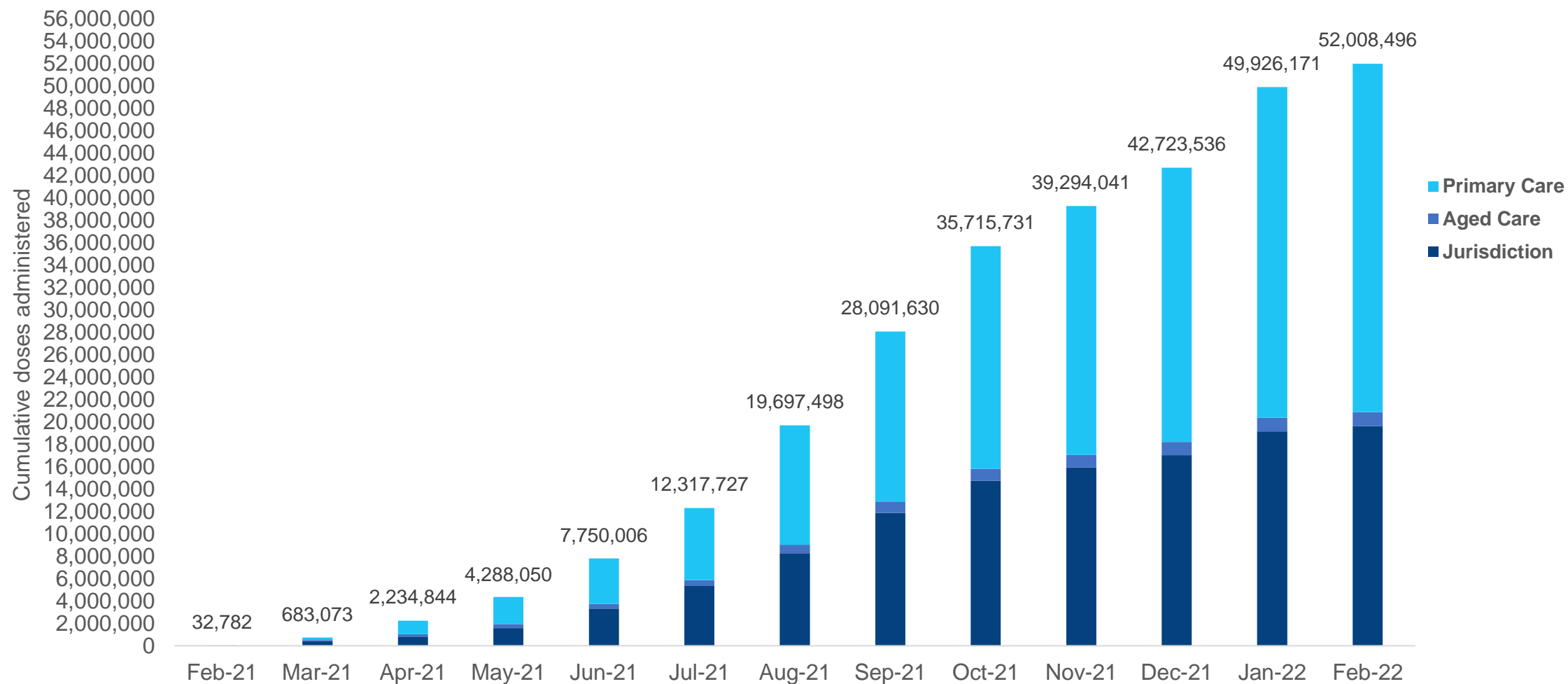
Source: Australian Immunisation Register



# Cumulative doses administered by channel

Data as at:  
10 Feb 2022

Australia's COVID-19  
Vaccine Roadmap



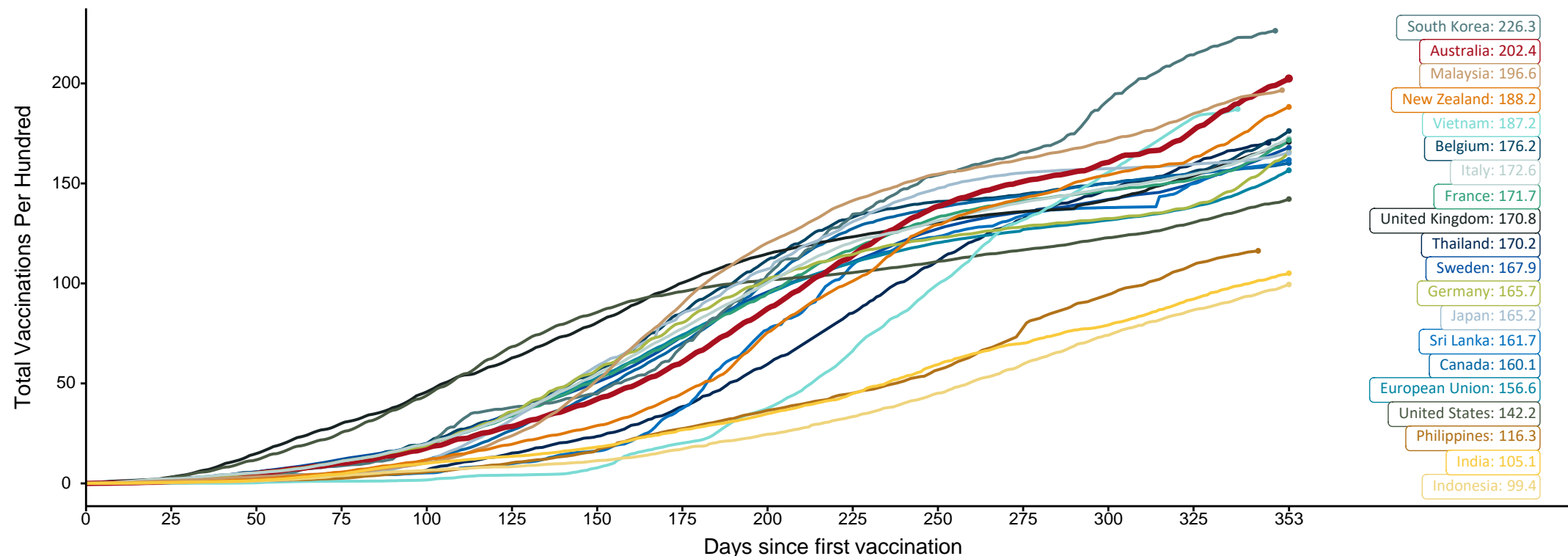
Source: Australian Immunisation Register

## Doses at equivalent stages of rollout (Day 353)

Data as at:  
10 Feb 2022

The x-axis is truncated at the length of Australia's vaccination program. Countries with intermittent reporting have had their doses per 100 imputed to Australia's current stage of rollout. Israel excluded as it is beyond scale of the graph

Cumulative doses administered (10 Feb): **52,008,496**

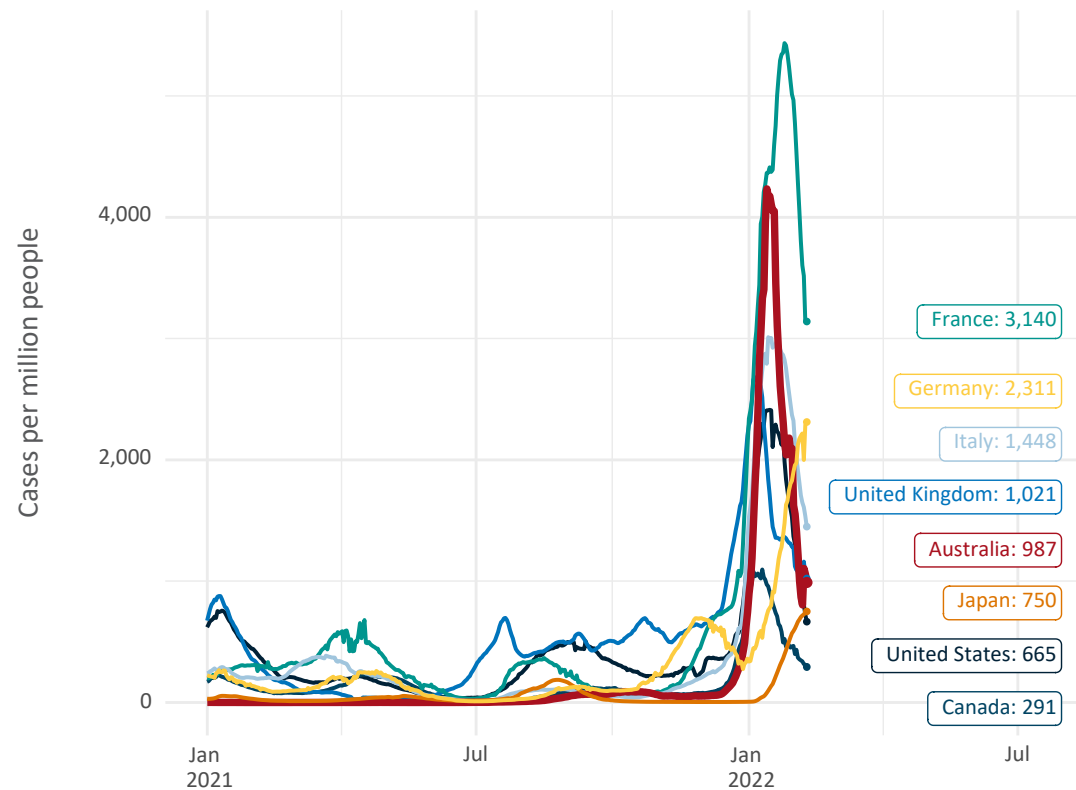


Note: From 15 September 2021, data for Australia includes all doses administered to people 12 and over. Prior to 15 September, data was for 16 and over  
Due to data revisions, Singapore has been removed from the chart  
Source: Department of Health (Australia), Our World in Data (international)  
Latest data: 10 February

Data as at:  
10 Feb 2022

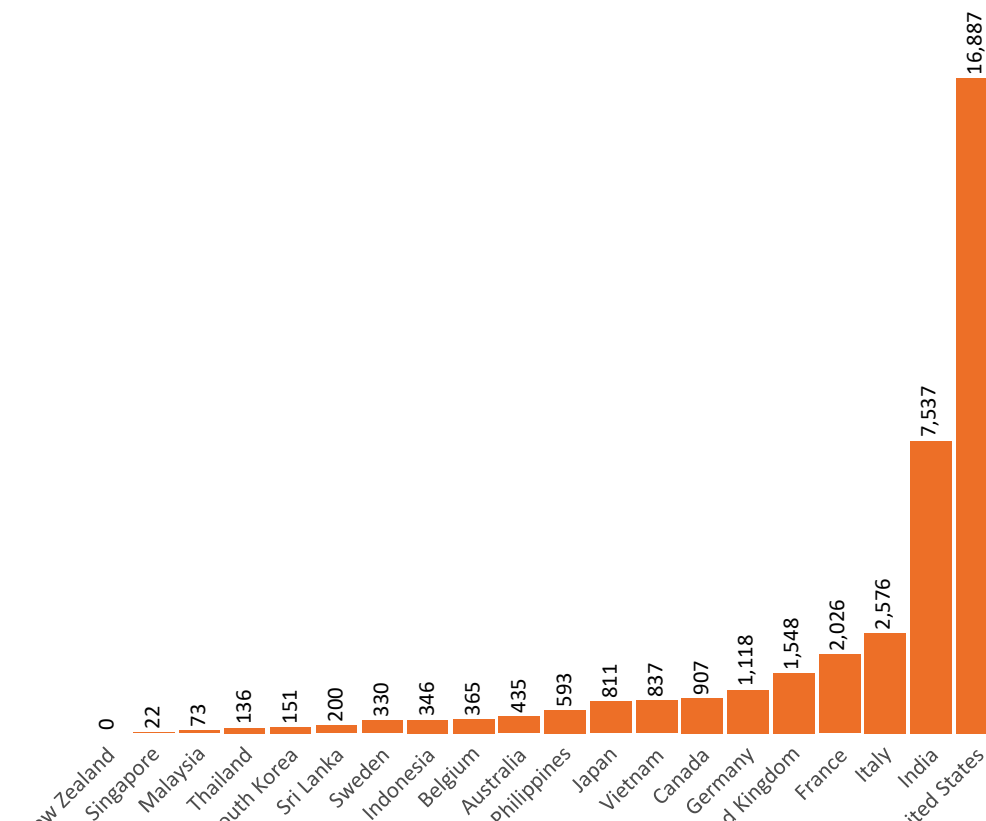
# International data – COVID-19

New daily cases per million in 2021, Australia and G7 countries  
Smoothed - 7 day average



Source: OWID  
Data downloaded: 11 Feb 2022 08:52  
Latest data: 09 Feb 2022

COVID-19 deaths in past 7 days - Australia and select countries

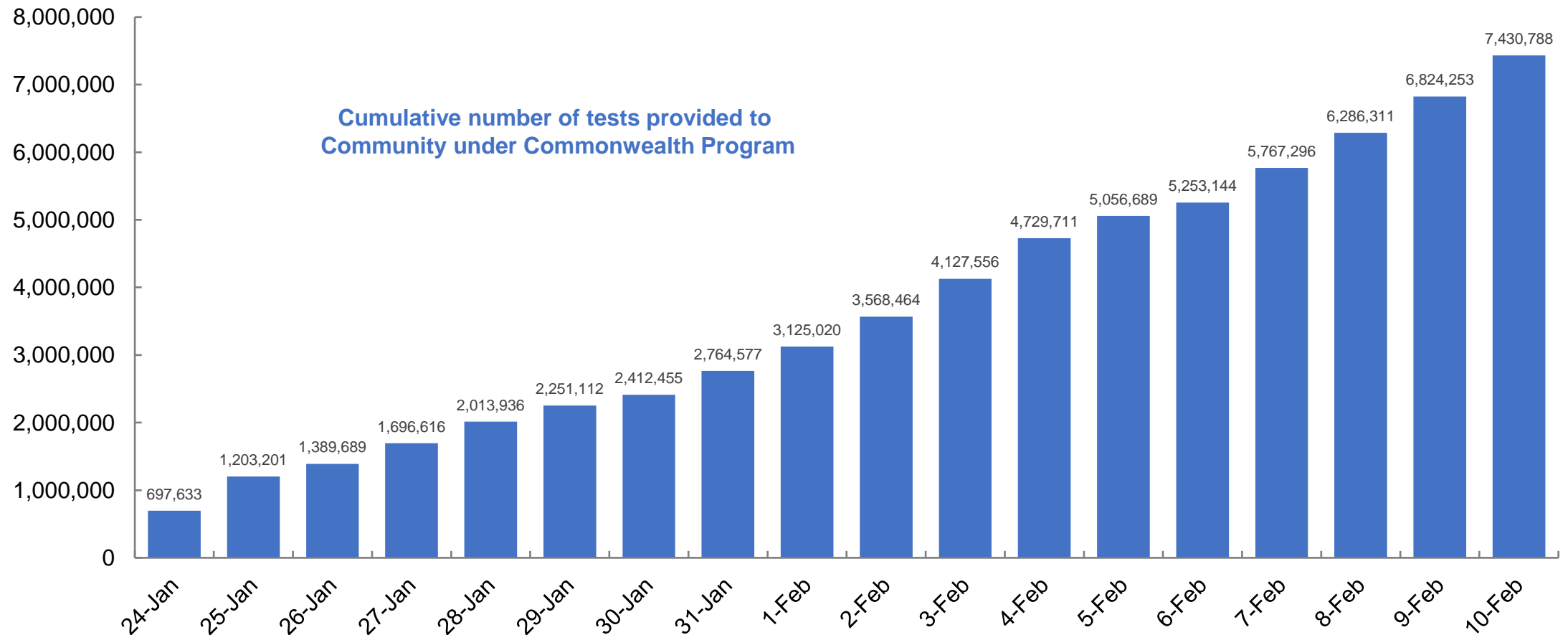


Source: OWID  
Data downloaded: 11 Feb 2022 08:52  
Latest data: 09 Feb 2022

## Concessional rapid antigen test program

**5,000 pharmacies** have delivered around **7.4 million rapid antigen tests** to **more than 1.7 Million eligible concession card holders** under the Government's concessional rapid antigen test program.

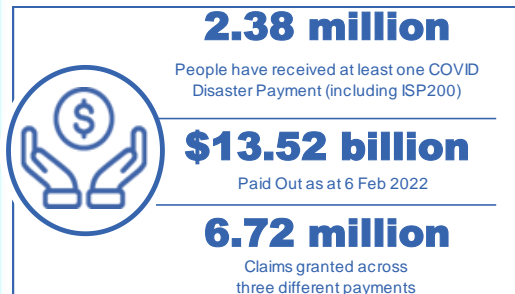
**Data as at:  
10 Feb 2022**



# Pandemic Response Payments

Australia's COVID-19  
Vaccine Roadmap

Data as at midnight:  
6 Feb 2022  
Updated weekly



<b>COVID Disaster Payment:</b>	5.89 million claims received - 2.19 million individuals paid a total of \$12.59 billion.
<b>\$200 Income Support Payment:</b>	353,000 claims received - 183,000 individuals paid a total of \$268.9 million.
<b>Pandemic Leave Disaster Payment:</b>	850,000 claims received - 619,000 individuals paid a total of \$661.1 million.



## COVID Disaster Payment

assisting during a  
lockdown event in a  
Commonwealth hotspot.

## Income Support Payment \$200

for income support  
recipients who lost at  
least 8 hours of work.

## Pandemic Leave Disaster Payment

for those who have to  
self-isolate, quarantine  
or care.

For more information visit:  
[servicesaustralia.gov.au](https://servicesaustralia.gov.au)

## COVID-19 DISASTER PAYMENTS

### Northern Territory

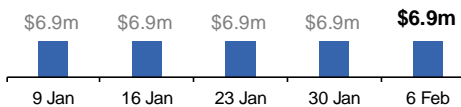
Lockdown (#3) from 16 Nov to 22 Nov  
Claiming period ended 27 Dec

**7,500 people have received at least  
one COVID Disaster Payment.**

**\$6.9m paid out as at 6 Feb 2022.**

**\$0 paid in initial payments in the week  
ending 6 Feb 2022.**

Cumulative payments made by Territory since  
activation on 25 Aug 2021.



### Victoria

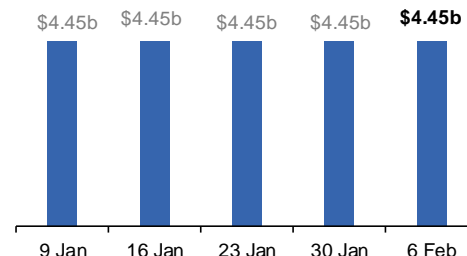
Lockdown (#6) from 6 Aug to 28 Oct  
Claiming period ended 9 Dec

**745,000 people have received at least  
one COVID Disaster Payment.**

**\$4.45b paid out as at 6 Feb 2022.**

**\$7,000 paid in initial and reoccurring  
payments in the week ending  
6 Feb 2022.**

Cumulative payments made by State since  
activation on 8 Jun 2021.



### New South Wales

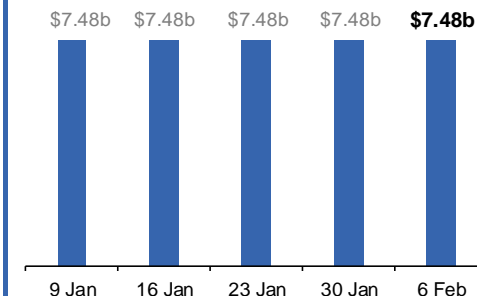
Lockdown from 24 Jun to 10 Oct  
Claiming period ended 27 Nov

**1.08m people have received at least  
one COVID Disaster Payment.**

**\$7.48b paid out as at 6 Feb 2022.**

**\$4,000 paid in initial and reoccurring  
payments in the week ending  
6 Feb 2022.**

Cumulative payments made by State since  
activation on 1 Jul 2021.



### Australian Capital Territory

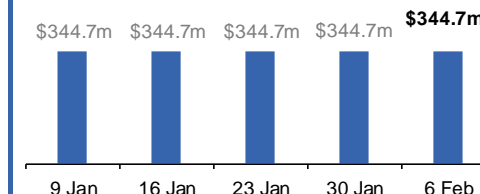
Lockdown from 12 Aug to 14 Oct  
Claiming period ended 25 Nov

**65,000 people have received at least  
one COVID Disaster Payment.**

**\$344.7m paid out as at 6 Feb 2022.**

**\$1,000 paid in initial and reoccurring  
payments in the week ending  
6 Feb 2022.**

Cumulative payments made by Territory since  
activation on 20 Aug 2021.



# Pandemic Response Payments (continued)

Data as at midnight:  
6 Feb 2022  
Updated weekly

## COVID-19 DISASTER PAYMENTS

### Tasmania

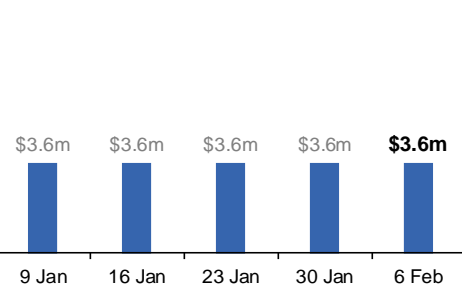
Lockdown from 15 Oct to 18 Oct  
Claiming period ended 12 Nov

**6,900 people have received at least one COVID Disaster Payment.**

**\$3.6m paid out as at 6 Feb 2022.**

**\$0 paid in initial and reoccurring payments in the week ending 6 Feb 2022.**

Cumulative payments made by State since activation on 22 Oct 2021.



### Queensland

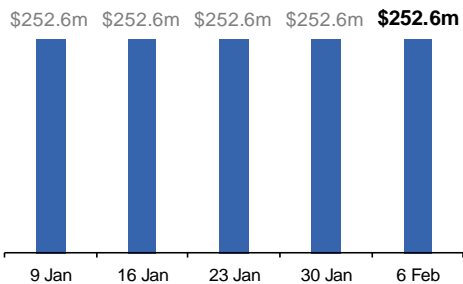
Lockdown from 31 Jul to 11 Aug  
Claiming period ended 28 Aug

**196,000 people have received at least one COVID Disaster Payment.**

**\$252.6m paid out as at 6 Feb 2022.**

**\$0 paid in initial and reoccurring payments in the week ending 6 Feb 2022.**

Cumulative payments made by State since activation on 7 Aug 2021.



### South Australia

Lockdown from 21 to 27 Jul  
Claiming period ended 17 Aug

**86,000 people have received at least one COVID Disaster Payment.**

**\$48.2m paid out as at 6 Feb 2022.**

**\$0 paid in initial and reoccurring payments in the week ending 6 Feb 2022.**

Cumulative payments made by State since activation on 28 Jul 2021.

