



CURRENT STATUS OF CONFIRMED CASES



274



ACT	NSW	NT	QLD	SA	TAS	VIC	WA
4	132	4	44	18	1	71	0

3,588



ACT	NSW	NT	QLD	SA	TAS	VIC	WA
54	1,906	174	686	210	15	542	1

61,968,530

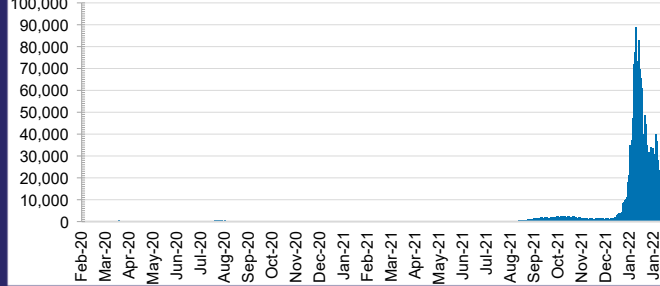


**TOTAL TESTS
CONDUCTED**

3.9% POSITIVE

ACT	NSW	NT	QLD
866,863	28,076,725	683,117	6,644,138
POSITIVE	POSITIVE	POSITIVE	POSITIVE
4.6%	3.5%	3.7%	5.1%
SA	TAS	VIC	WA
3,679,693	537,137	19,127,580	2,353,277
POSITIVE	POSITIVE	POSITIVE	POSITIVE
3.2%	2.9%	4.8%	0.1%

DAILY NUMBER OF REPORTED CASES

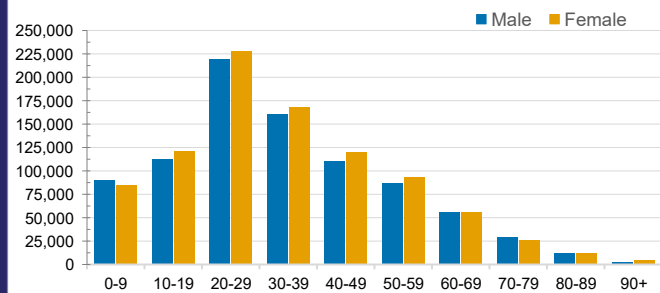


CASES IN AGED CARE SERVICES

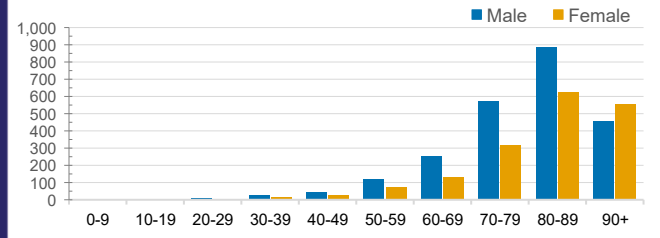
Confirmed Cases	Australia	ACT	NSW	NT	QLD	SA	TAS	VIC	WA
Residential Care Recipients	16502 (1570)	116 (11)	6030 (414)	22 (2)	3053 (152)	1201 (90)	167 (4)	5913 (897)	0
In Home Care Recipients	205 (13)	0	45 (3)	0	15	1	5 (2)	138 (7)	1 (1)

Cases in care recipients (deaths)

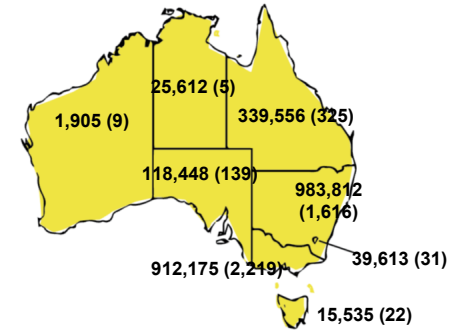
CASES BY AGE GROUP AND SEX



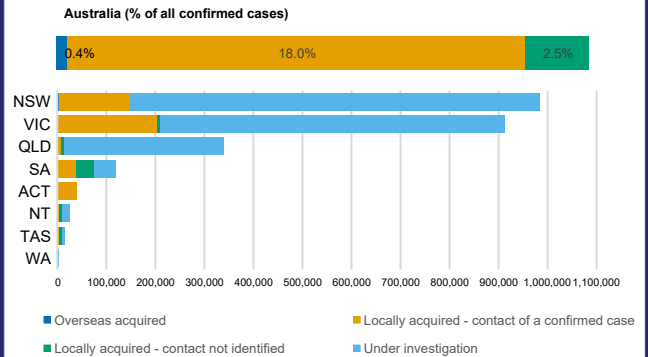
DEATHS BY AGE GROUP AND SEX



CASES (DEATHS) BY STATE AND TERRITORIES



CASES BY SOURCE OF INFECTION



PUBLIC HEALTH RESPONSE MEASURE

