



**CURRENT STATUS OF CONFIRMED CASES**



**271**



ACT	NSW	NT	QLD	SA	TAS	VIC	WA
1	132	5	45	15	1	72	0



**3,800**

ACT	NSW	NT	QLD	SA	TAS	VIC	WA
55	2,068	178	705	204	14	575	1

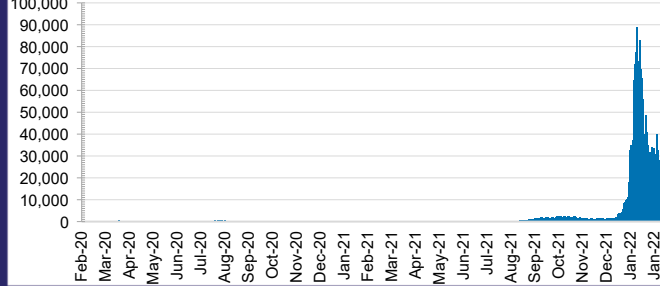
**61,854,639**



**3.9%** POSITIVE

ACT	NSW	NT	QLD
865,402	28,036,288	681,671	6,626,385
POSITIVE	POSITIVE	POSITIVE	POSITIVE
4.5%	3.5%	3.6%	5.1%
SA	TAS	VIC	WA
3,669,728	535,668	19,099,420	2,340,077
POSITIVE	POSITIVE	POSITIVE	POSITIVE
3.2%	2.9%	4.7%	0.1%

**DAILY NUMBER OF REPORTED CASES**

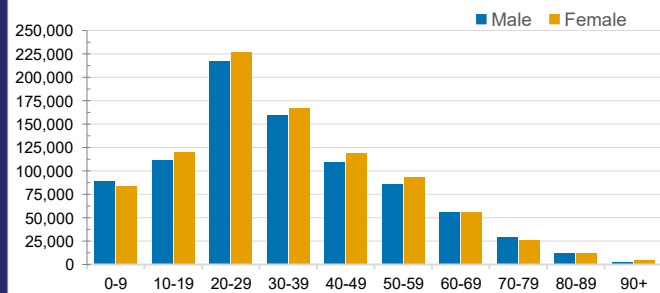


**CASES IN AGED CARE SERVICES**

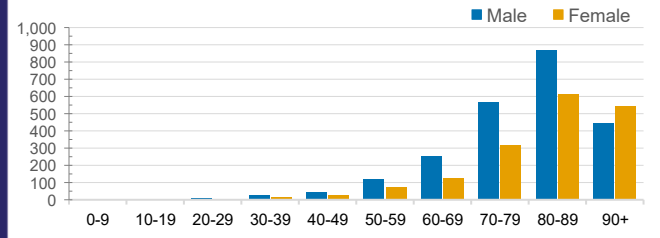
Confirmed Cases	Australia	ACT	NSW	NT	QLD	SA	TAS	VIC	WA
Residential Care Recipients	16354 (1554)	114 (11)	6046 (411)	23 (2)	2945 (145)	1198 (90)	153 (4)	5875 (891)	0
In Home Care Recipients	205 (13)	0	45 (3)	0	15	1	5 (2)	138 (7)	1 (1)

Cases in care recipients (deaths)

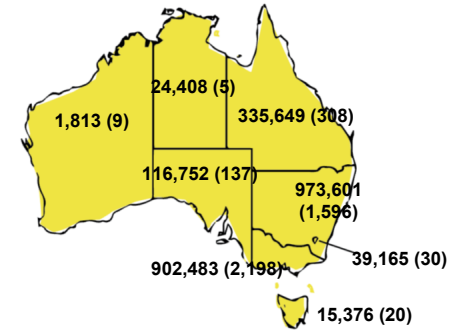
**CASES BY AGE GROUP AND SEX**



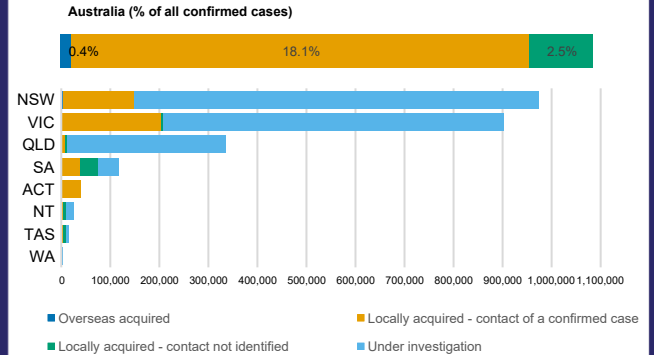
**DEATHS BY AGE GROUP AND SEX**



**CASES (DEATHS) BY STATE AND TERRITORIES**



**CASES BY SOURCE OF INFECTION**



**PUBLIC HEALTH RESPONSE MEASURE**

